

Data Path : Z:\pestpcbsrv\HPCHEM1\ECD_0\Data\P0032725\
 Data File : PO110075.D
 Signal(s) : Signal #1: ECD1A.ch Signal #2: ECD2B.ch
 Acq On : 28 Mar 2025 02:25
 Operator : YP/AJ
 Sample : Q1660-09 10X
 Misc :
 ALS Vial : 35 Sample Multiplier: 1

Instrument :
 ECD_0
 ClientSampleId :
 JEB410K-1-1

Integration File signal 1: autoint1.e
 Integration File signal 2: autoint2.e
 Quant Time: Mar 28 09:11:40 2025
 Quant Method : Z:\pestpcbsrv\HPCHEM1\ECD_0\methods\P0031925.M
 Quant Title : GC EXTRACTABLES
 QLast Update : Wed Mar 19 02:52:01 2025
 Response via : Initial Calibration
 Integrator: ChemStation

Volume Inj. : 2 µl
 Signal #1 Phase : ZB-MR1 Signal #2 Phase: ZB-MR2
 Signal #1 Info : 30Mx0.32mmx 0.50µ Signal #2 Info : 30M x 0.32mm x 0.25µm

Compound	RT#1	RT#2	Resp#1	Resp#2	ng/ml	ng/ml

System Monitoring Compounds						
1) SA Tetrachlo...	3.690	3.687	13853063	7647979	1.522	1.458
2) SA Decachlor...	8.741	8.692	11342054	3336468	1.475	1.375
Target Compounds						
3) L1 AR-1016-1	4.793	4.777	1336210	950281	3.970	5.186 #
4) L1 AR-1016-2	4.793	4.777	1336210	950281	2.882	3.634 #
5) L1 AR-1016-3	4.856	4.973	305455	295478	0.953	2.084 #
6) L1 AR-1016-4	4.979	5.011	108290	321428	0.429	2.726 #
7) L1 AR-1016-5	5.229	5.231	962733	114645	3.503	0.750 #
8) L2 AR-1221-1	3.880	3.872	2767111	495716	23.890	7.412 #
9) L2 AR-1221-2	3.992	3.989	3780135	515522	43.701	10.440 #
10) L2 AR-1221-3	4.084	4.048	1270765	84205	4.856	0.555 #
11) L3 AR-1232-1	4.084	4.048	1270765	84205	5.890	0.679 #
12) L3 AR-1232-2	4.570	4.777	1140744	950281	9.938	7.896
13) L3 AR-1232-3	4.793	4.973	1336210	295478	6.309	4.642 #
14) L3 AR-1232-4	4.979	5.075	108290	907893	0.954	15.300 #
15) L3 AR-1232-5	5.029	5.231	515368	114645	6.406	1.813 #
16) L4 AR-1242-1	4.793	4.777	1336210	950281	4.997	6.499 #
17) L4 AR-1242-2	4.793	4.777	1336210	950281	3.629	4.568 #
18) L4 AR-1242-3	4.856	4.973	305455	295478	1.184	2.647 #
19) L4 AR-1242-4	4.979	5.075	108290	907893	0.541	7.828 #
20) L4 AR-1242-5	5.645	5.573	1448344	313421	6.862	2.284 #
21) L5 AR-1248-1	4.793	4.777	1336210	950281	6.060	7.819 #
22) L5 AR-1248-2	5.029	5.011	515368	321428	1.711	1.908
23) L5 AR-1248-3	5.229	5.075	962733	907893	2.580	5.011 #
24) L5 AR-1248-4	5.595	5.231	452922	114645	0.858	0.545 #
25) L5 AR-1248-5	5.645	5.625	1448344	423596	3.883	2.038 #
26) L6 AR-1254-1	5.595	5.573	452922	313421	0.801	1.002 #
27) L6 AR-1254-2	5.738	5.714	2390644	835231	4.968	3.076 #
28) L6 AR-1254-3	6.145	6.121	2230410	483461	2.885	1.164 #
29) L6 AR-1254-4	6.373	6.343	214632	282454	0.447	1.164 #
30) L6 AR-1254-5	6.793	6.767	330041	1787622	0.508	5.322 #
31) L7 AR-1260-1	6.273	6.249	1587582	618807	3.368	2.422 #
32) L7 AR-1260-2	6.464	6.437	698150	229575	1.172	0.765 #
33) L7 AR-1260-3	6.832	6.591	662419	537070	1.365	1.858 #
34) L7 AR-1260-4	7.094	7.059	1511558	630632	3.564	2.932
35) L7 AR-1260-5	7.333	7.302	2457345	1063754	2.350	2.133
36) L8 AR-1262-1	6.832	6.801	662419	1207953	0.963	3.508 #
37) L8 AR-1262-2	7.333	7.302	2457345	1063754	2.062	1.980
38) L8 AR-1262-3	7.623	7.589	1864828	497209	3.962	2.562 #
39) L8 AR-1262-4	7.685	7.650	2119571	974684	2.424	2.694
40) L8 AR-1262-5	8.182	8.143	1303048	136800	3.304	0.969 #
41) L9 AR-1268-1	7.623	7.589	1864828	497209	1.332	0.849 #

Data Path : Z:\pestpcbsrv\HPCHEM1\ECD_0\Data\P0032725\
 Data File : P0110075.D
 Signal(s) : Signal #1: ECD1A.ch Signal #2: ECD2B.ch
 Acq On : 28 Mar 2025 02:25
 Operator : YP/AJ
 Sample : Q1660-09 10X
 Misc :
 ALS Vial : 35 Sample Multiplier: 1

Instrument :
 ECD_0
 ClientSampleId :
 JEB410K-1-1

Integration File signal 1: autoint1.e
 Integration File signal 2: autoint2.e
 Quant Time: Mar 28 09:11:40 2025
 Quant Method : Z:\pestpcbsrv\HPCHEM1\ECD_0\methods\P0031925.M
 Quant Title : GC EXTRACTABLES
 QLast Update : Wed Mar 19 02:52:01 2025
 Response via : Initial Calibration
 Integrator: ChemStation

Volume Inj. : 2 µl
 Signal #1 Phase : ZB-MR1 Signal #2 Phase: ZB-MR2
 Signal #1 Info : 30Mx0.32mmx 0.50µ Signal #2 Info : 30M x 0.32mm x 0.25µm

	Compound	RT#1	RT#2	Resp#1	Resp#2	ng/ml	ng/ml
42)	L9 AR-1268-2	7.685	7.650	2119571	974684	1.656	1.813
43)	L9 AR-1268-3	7.887	7.852	467488	99577	0.455	0.240 #
44)	L9 AR-1268-4	8.182	8.143	1303048	136800	2.948	0.849 #
45)	L9 AR-1268-5	8.479	8.435	807646	347463	0.254	0.350 #

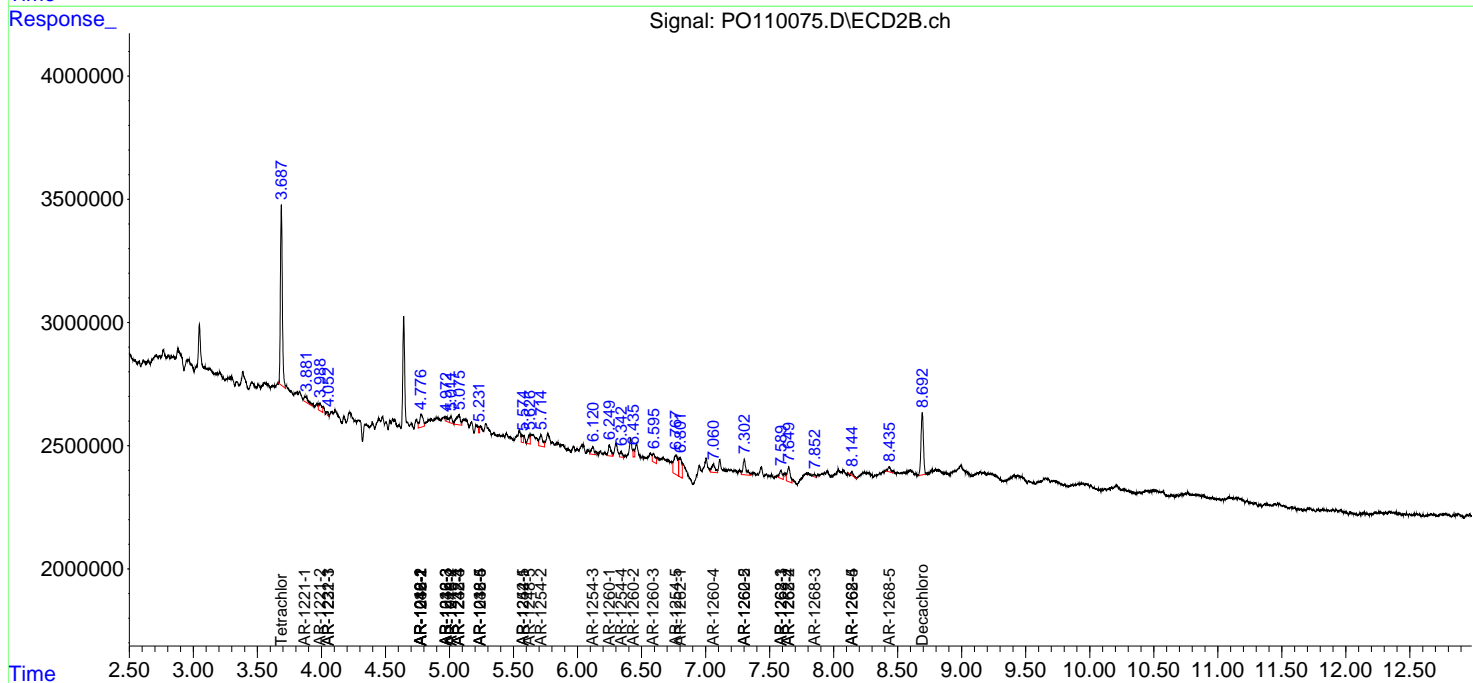
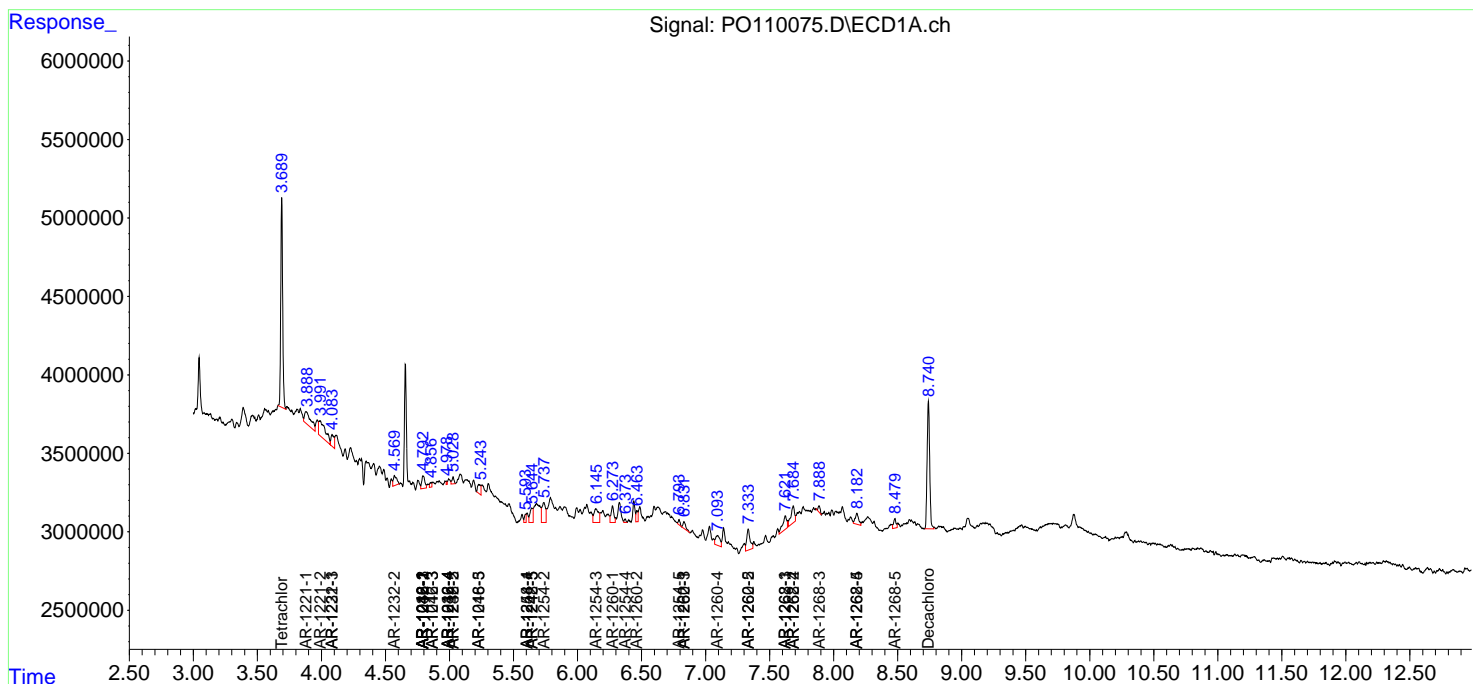
(f)=RT Delta > 1/2 Window (#)=Amounts differ by > 25% (m)=manual int.

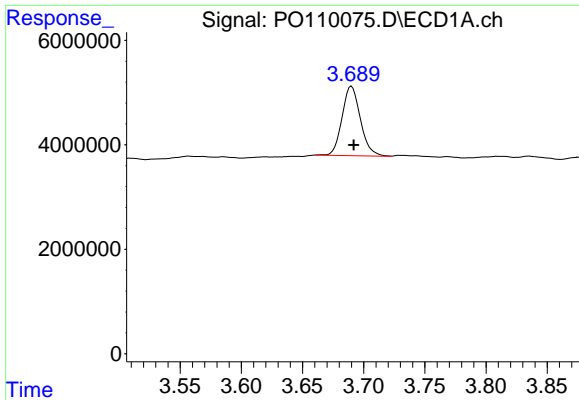
Data Path : Z:\pestpcbsrv\HPCHEM1\ECD_O\Data\PO032725\
 Data File : PO110075.D
 Signal(s) : Signal #1: ECD1A.ch Signal #2: ECD2B.ch
 Acq On : 28 Mar 2025 02:25
 Operator : YP/AJ
 Sample : Q1660-09 10X
 Misc :
 ALS Vial : 35 Sample Multiplier: 1

Instrument :
 ECD_O
 ClientSampleId :
 JEB410K-1-1

Integration File signal 1: autoint1.e
 Integration File signal 2: autoint2.e
 Quant Time: Mar 28 09:11:40 2025
 Quant Method : Z:\pestpcbsrv\HPCHEM1\ECD_O\methods\PO031925.M
 Quant Title : GC EXTRACTABLES
 QLast Update : Wed Mar 19 02:52:01 2025
 Response via : Initial Calibration
 Integrator: ChemStation

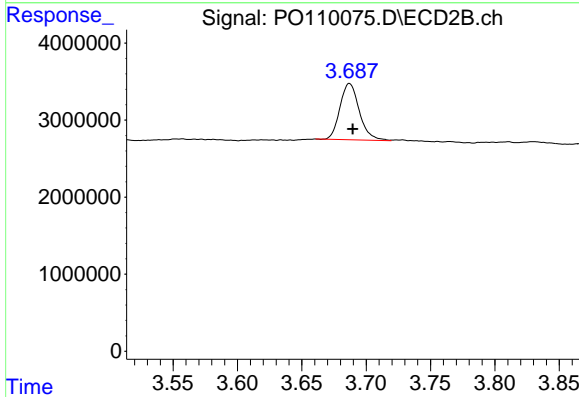
Volume Inj. : 2 µl
 Signal #1 Phase : ZB-MR1 Signal #2 Phase: ZB-MR2
 Signal #1 Info : 30Mx0.32mmx 0.50µ Signal #2 Info : 30M x 0.32mm x 0.25µm



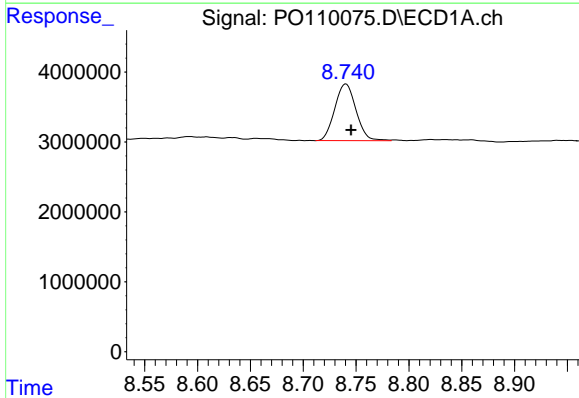


#1 Tetrachloro-m-xylene
 R.T.: 3.690 min
 Delta R.T.: -0.002 min
 Response: 13853063
 Conc: 1.52 ng/ml

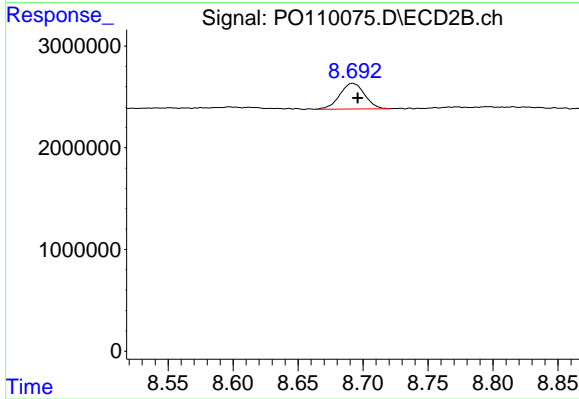
Instrument :
 ECD_O
 ClientSampleId :
 JEB410K-1-1



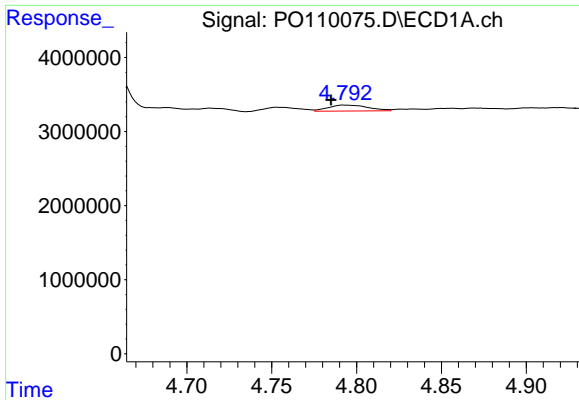
#1 Tetrachloro-m-xylene
 R.T.: 3.687 min
 Delta R.T.: -0.003 min
 Response: 7647979
 Conc: 1.46 ng/ml



#2 Decachlorobiphenyl
 R.T.: 8.741 min
 Delta R.T.: -0.005 min
 Response: 11342054
 Conc: 1.48 ng/ml



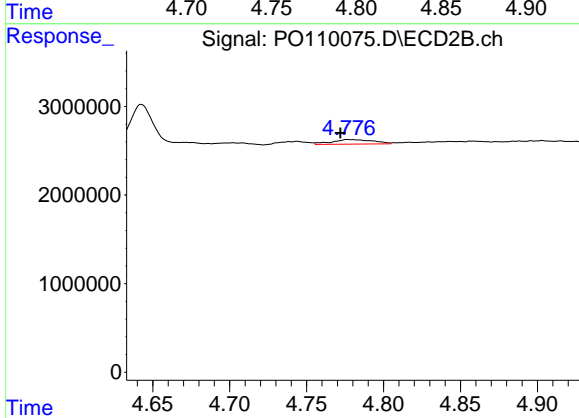
#2 Decachlorobiphenyl
 R.T.: 8.692 min
 Delta R.T.: -0.004 min
 Response: 3336468
 Conc: 1.38 ng/ml



#3 AR-1016-1

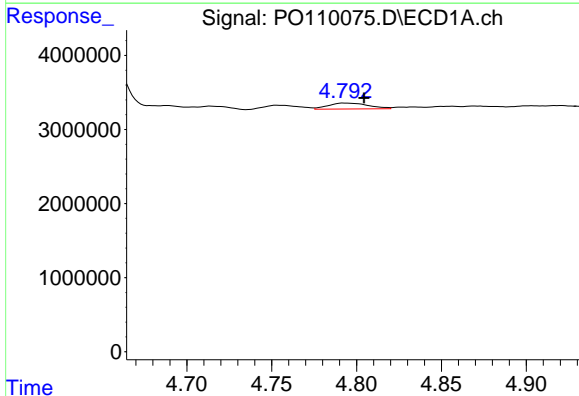
R.T.: 4.793 min
 Delta R.T.: 0.008 min
 Response: 1336210
 Conc: 3.97 ng/ml

Instrument :
 ECD_O
 ClientSampleId :
 JEB410K-1-1



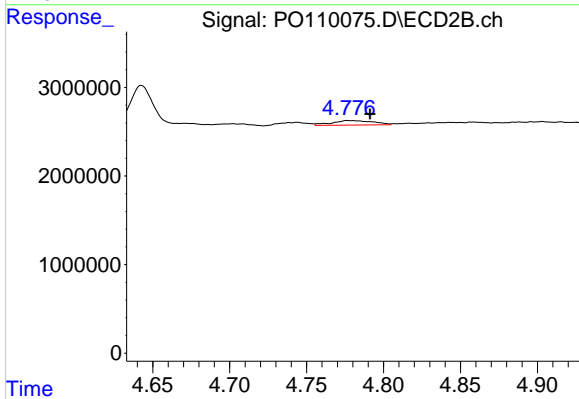
#3 AR-1016-1

R.T.: 4.777 min
 Delta R.T.: 0.005 min
 Response: 950281
 Conc: 5.19 ng/ml



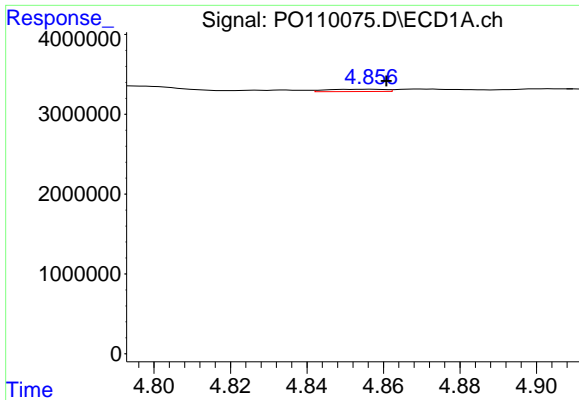
#4 AR-1016-2

R.T.: 4.793 min
 Delta R.T.: -0.012 min
 Response: 1336210
 Conc: 2.88 ng/ml



#4 AR-1016-2

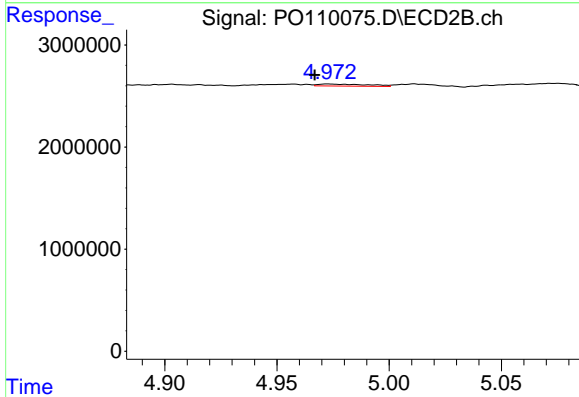
R.T.: 4.777 min
 Delta R.T.: -0.014 min
 Response: 950281
 Conc: 3.63 ng/ml



#5 AR-1016-3

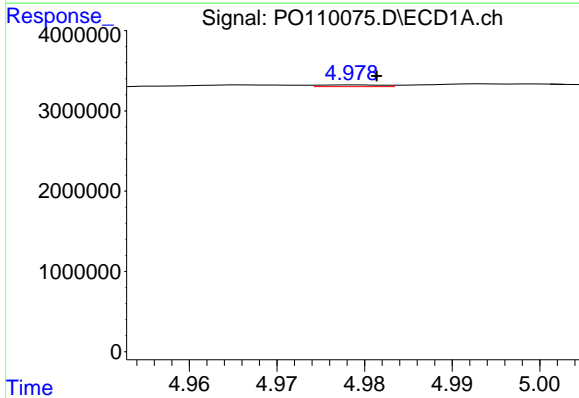
R.T.: 4.856 min
 Delta R.T.: -0.004 min
 Response: 305455
 Conc: 0.95 ng/ml

Instrument :
 ECD_O
 ClientSampleId :
 JEB410K-1-1



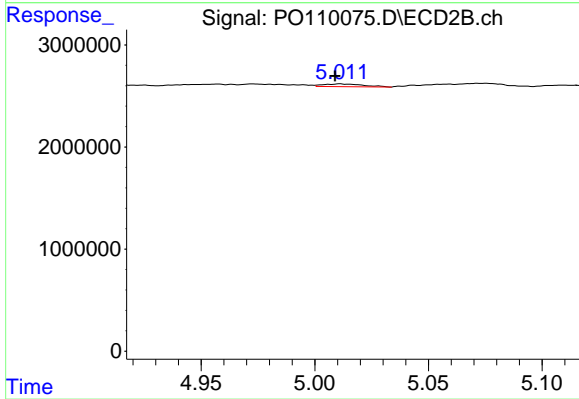
#5 AR-1016-3

R.T.: 4.973 min
 Delta R.T.: 0.006 min
 Response: 295478
 Conc: 2.08 ng/ml



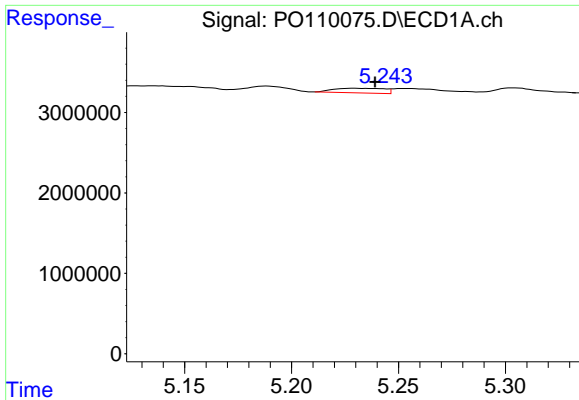
#6 AR-1016-4

R.T.: 4.979 min
 Delta R.T.: -0.002 min
 Response: 108290
 Conc: 0.43 ng/ml



#6 AR-1016-4

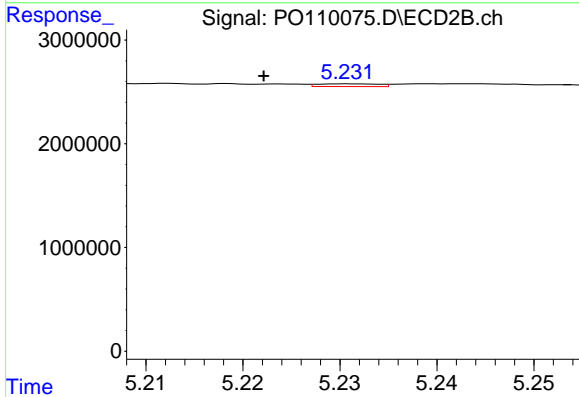
R.T.: 5.011 min
 Delta R.T.: 0.002 min
 Response: 321428
 Conc: 2.73 ng/ml



#7 AR-1016-5

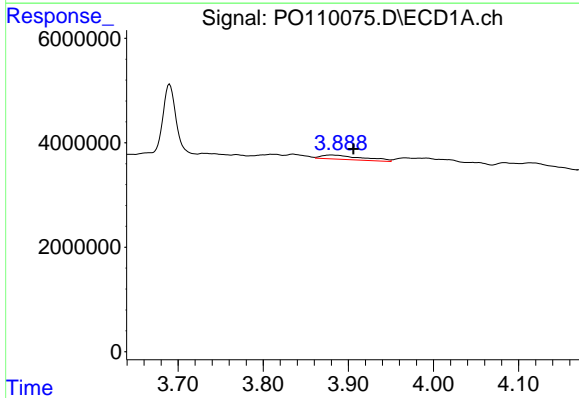
R.T.: 5.229 min
 Delta R.T.: -0.010 min
 Response: 962733
 Conc: 3.50 ng/ml

Instrument :
 ECD_O
 ClientSampleId :
 JEB410K-1-1



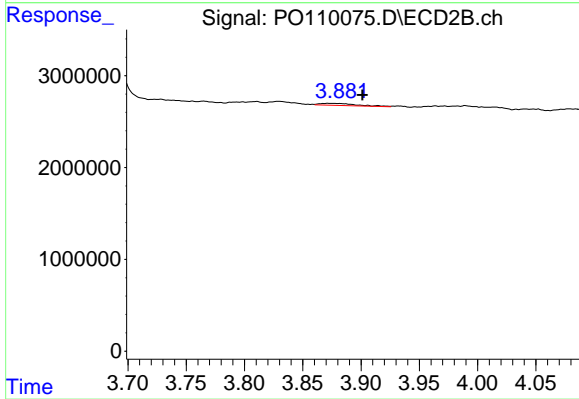
#7 AR-1016-5

R.T.: 5.231 min
 Delta R.T.: 0.009 min
 Response: 114645
 Conc: 0.75 ng/ml



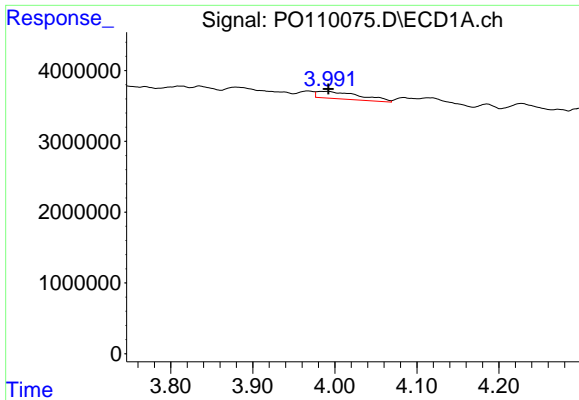
#8 AR-1221-1

R.T.: 3.880 min
 Delta R.T.: -0.026 min
 Response: 2767111
 Conc: 23.89 ng/ml



#8 AR-1221-1

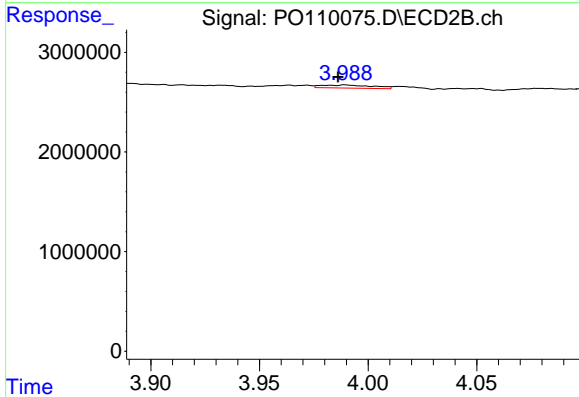
R.T.: 3.872 min
 Delta R.T.: -0.029 min
 Response: 495716
 Conc: 7.41 ng/ml



#9 AR-1221-2

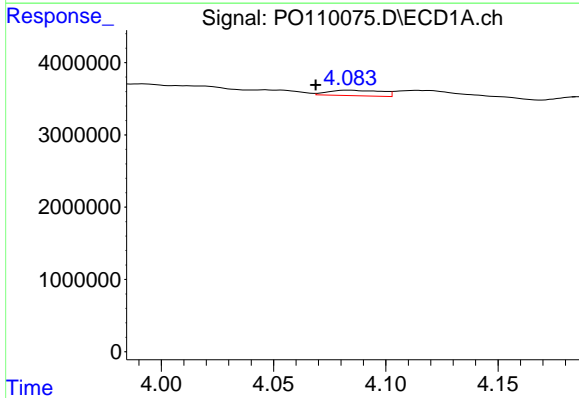
R.T.: 3.992 min
 Delta R.T.: 0.000 min
 Response: 3780135
 Conc: 43.70 ng/ml

Instrument :
 ECD_O
 ClientSampleId :
 JEB410K-1-1



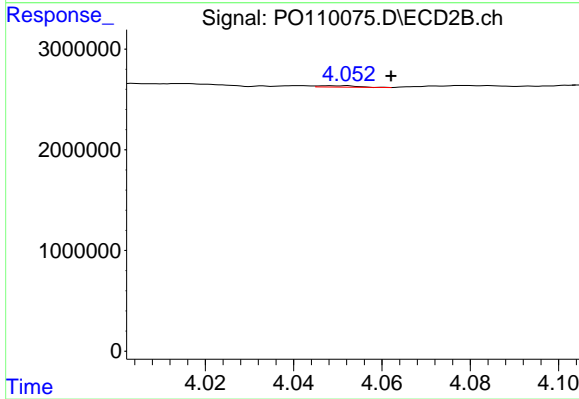
#9 AR-1221-2

R.T.: 3.989 min
 Delta R.T.: 0.003 min
 Response: 515522
 Conc: 10.44 ng/ml



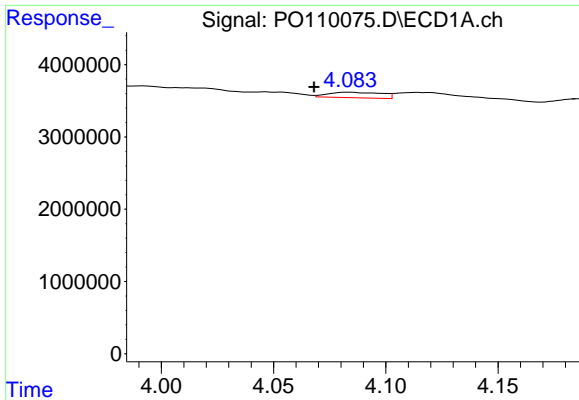
#10 AR-1221-3

R.T.: 4.084 min
 Delta R.T.: 0.015 min
 Response: 1270765
 Conc: 4.86 ng/ml



#10 AR-1221-3

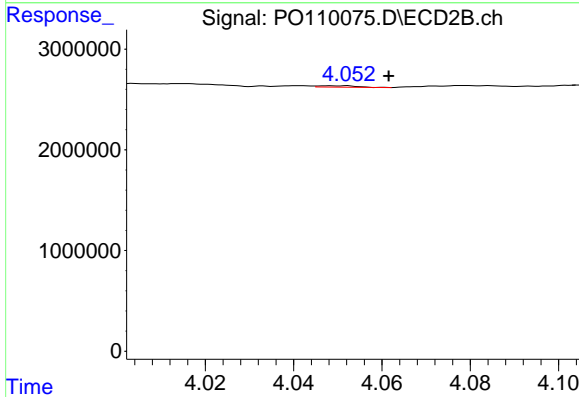
R.T.: 4.048 min
 Delta R.T.: -0.014 min
 Response: 84205
 Conc: 0.56 ng/ml



#11 AR-1232-1

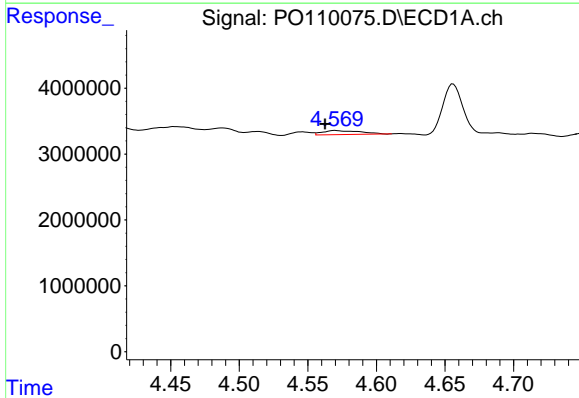
R.T.: 4.084 min
 Delta R.T.: 0.016 min
 Response: 1270765
 Conc: 5.89 ng/ml

Instrument :
 ECD_O
 ClientSampleId :
 JEB410K-1-1



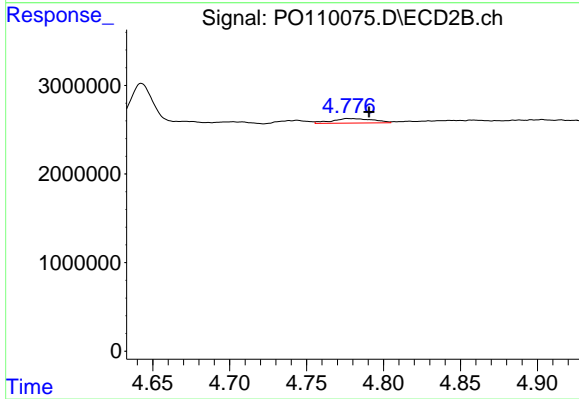
#11 AR-1232-1

R.T.: 4.048 min
 Delta R.T.: -0.013 min
 Response: 84205
 Conc: 0.68 ng/ml



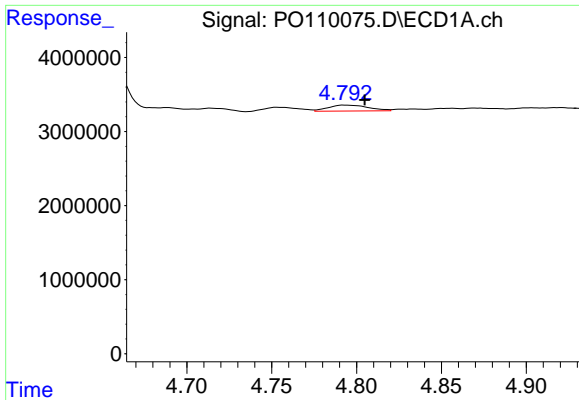
#12 AR-1232-2

R.T.: 4.570 min
 Delta R.T.: 0.007 min
 Response: 1140744
 Conc: 9.94 ng/ml



#12 AR-1232-2

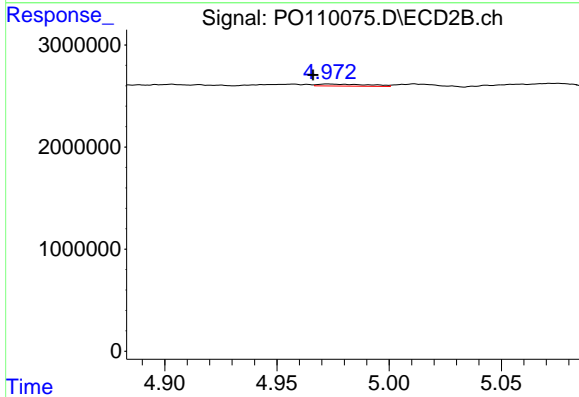
R.T.: 4.777 min
 Delta R.T.: -0.014 min
 Response: 950281
 Conc: 7.90 ng/ml



#13 AR-1232-3

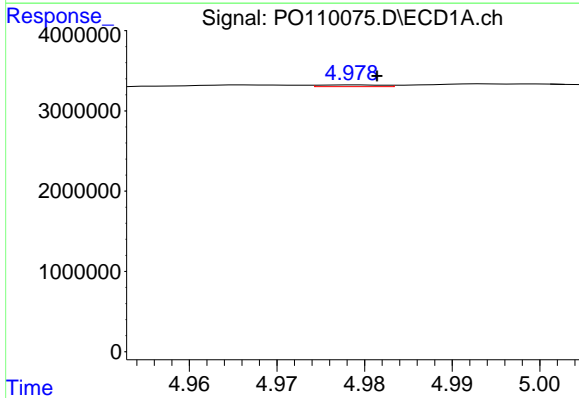
R.T.: 4.793 min
 Delta R.T.: -0.012 min
 Response: 1336210
 Conc: 6.31 ng/ml

Instrument :
 ECD_O
 ClientSampleId :
 JEB410K-1-1



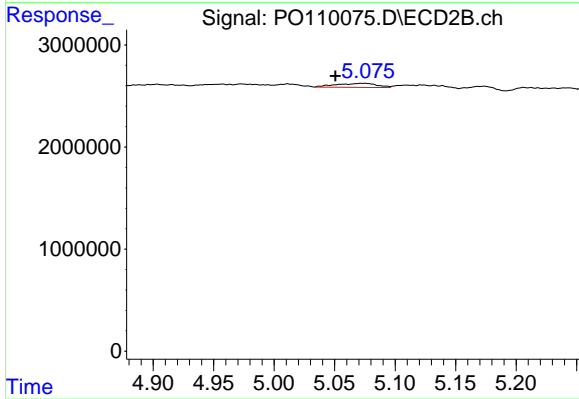
#13 AR-1232-3

R.T.: 4.973 min
 Delta R.T.: 0.007 min
 Response: 295478
 Conc: 4.64 ng/ml



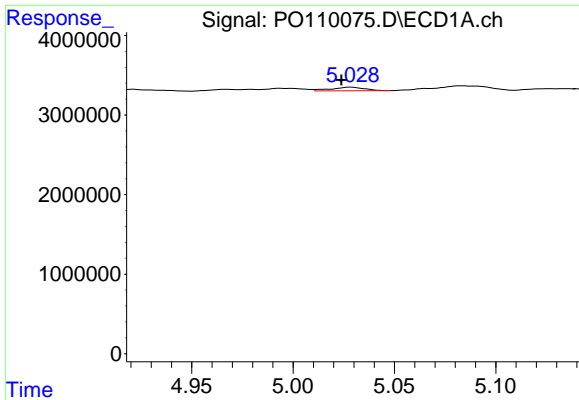
#14 AR-1232-4

R.T.: 4.979 min
 Delta R.T.: -0.002 min
 Response: 108290
 Conc: 0.95 ng/ml



#14 AR-1232-4

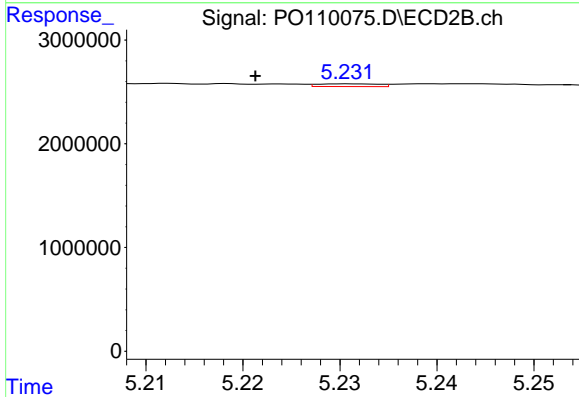
R.T.: 5.075 min
 Delta R.T.: 0.024 min
 Response: 907893
 Conc: 15.30 ng/ml



#15 AR-1232-5

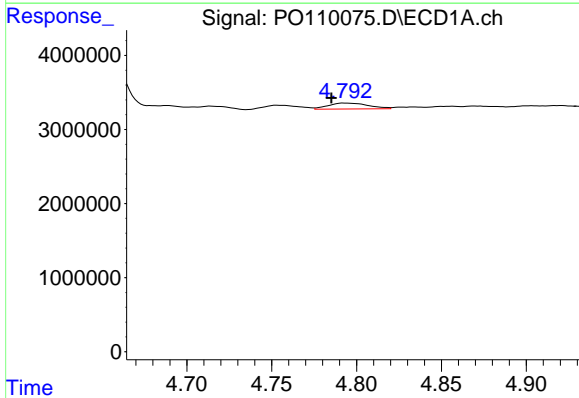
R.T.: 5.029 min
 Delta R.T.: 0.005 min
 Response: 515368
 Conc: 6.41 ng/ml

Instrument :
 ECD_O
 ClientSampleId :
 JEB410K-1-1



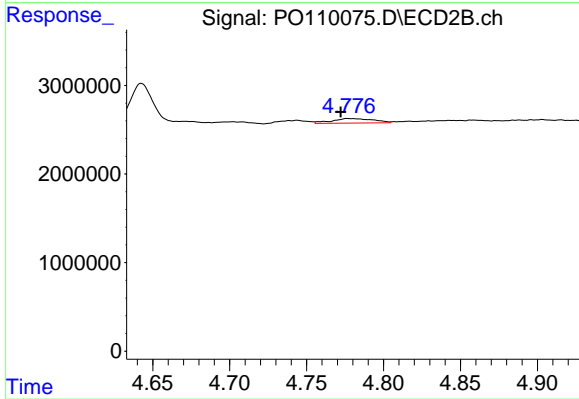
#15 AR-1232-5

R.T.: 5.231 min
 Delta R.T.: 0.010 min
 Response: 114645
 Conc: 1.81 ng/ml



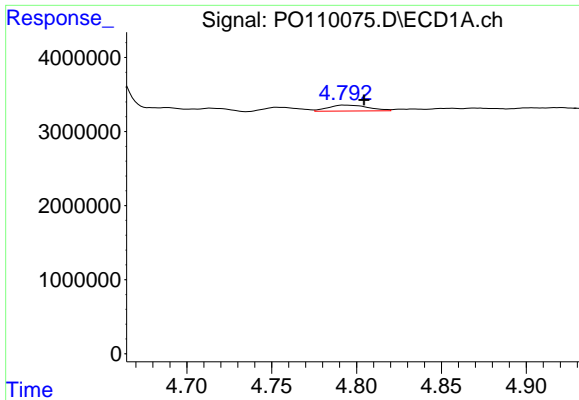
#16 AR-1242-1

R.T.: 4.793 min
 Delta R.T.: 0.008 min
 Response: 1336210
 Conc: 5.00 ng/ml



#16 AR-1242-1

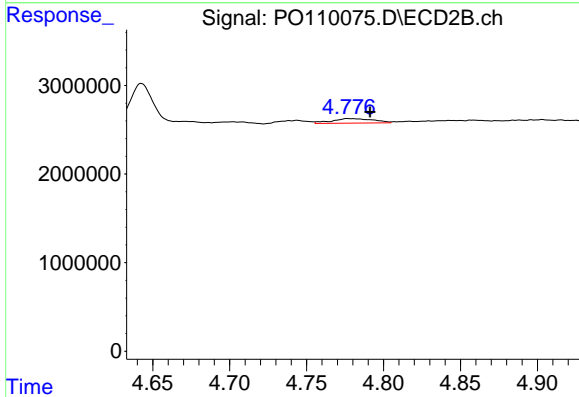
R.T.: 4.777 min
 Delta R.T.: 0.005 min
 Response: 950281
 Conc: 6.50 ng/ml



#17 AR-1242-2

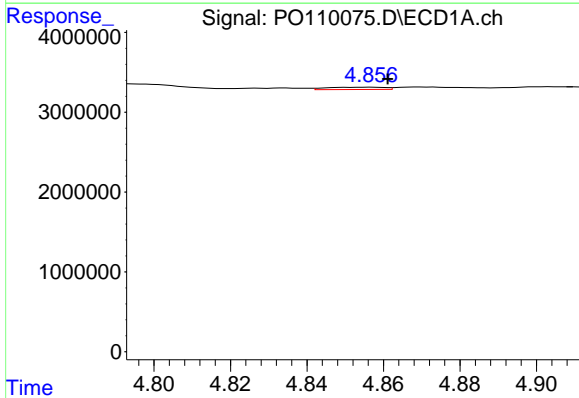
R.T.: 4.793 min
 Delta R.T.: -0.012 min
 Response: 1336210
 Conc: 3.63 ng/ml

Instrument :
 ECD_O
 ClientSampleId :
 JEB410K-1-1



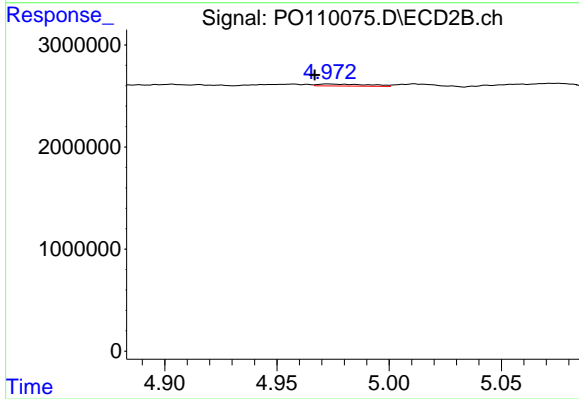
#17 AR-1242-2

R.T.: 4.777 min
 Delta R.T.: -0.014 min
 Response: 950281
 Conc: 4.57 ng/ml



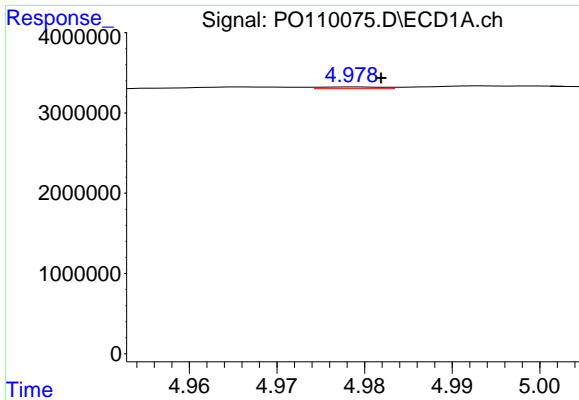
#18 AR-1242-3

R.T.: 4.856 min
 Delta R.T.: -0.005 min
 Response: 305455
 Conc: 1.18 ng/ml



#18 AR-1242-3

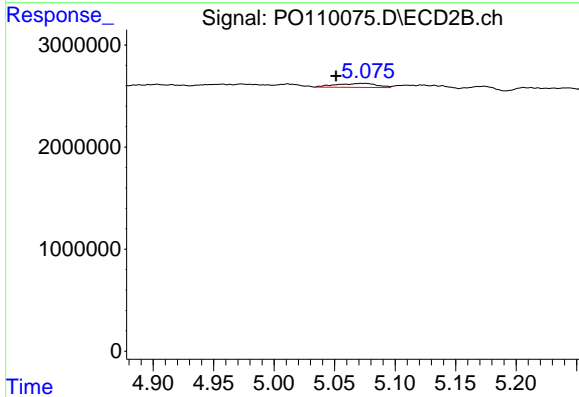
R.T.: 4.973 min
 Delta R.T.: 0.006 min
 Response: 295478
 Conc: 2.65 ng/ml



#19 AR-1242-4

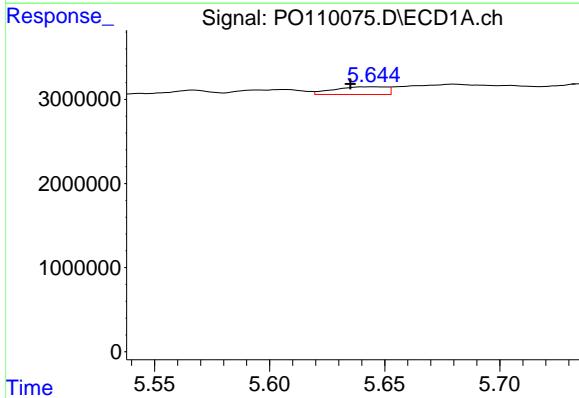
R.T.: 4.979 min
 Delta R.T.: -0.003 min
 Response: 108290
 Conc: 0.54 ng/ml

Instrument :
 ECD_O
 ClientSampleId :
 JEB410K-1-1



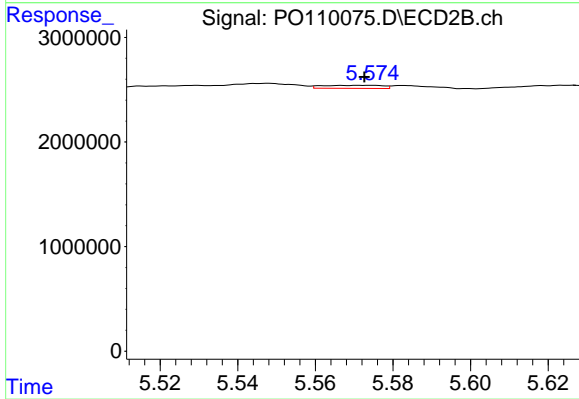
#19 AR-1242-4

R.T.: 5.075 min
 Delta R.T.: 0.024 min
 Response: 907893
 Conc: 7.83 ng/ml



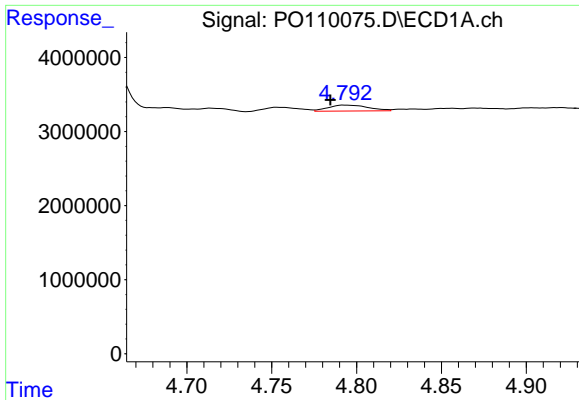
#20 AR-1242-5

R.T.: 5.645 min
 Delta R.T.: 0.010 min
 Response: 1448344
 Conc: 6.86 ng/ml



#20 AR-1242-5

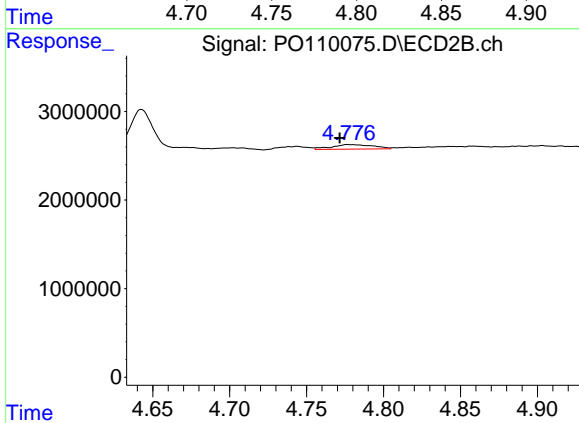
R.T.: 5.573 min
 Delta R.T.: 0.000 min
 Response: 313421
 Conc: 2.28 ng/ml



#21 AR-1248-1

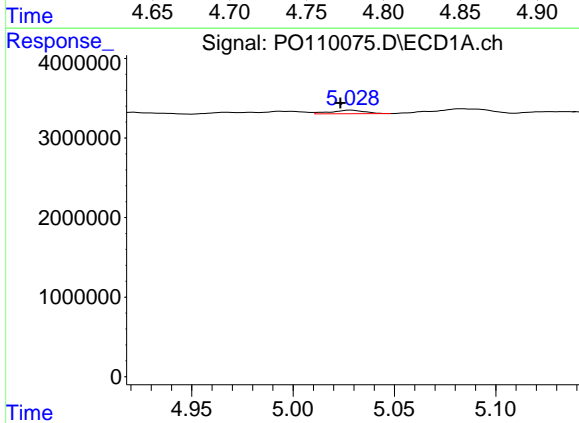
R.T.: 4.793 min
 Delta R.T.: 0.008 min
 Response: 1336210
 Conc: 6.06 ng/ml

Instrument :
 ECD_O
 ClientSampleId :
 JEB410K-1-1



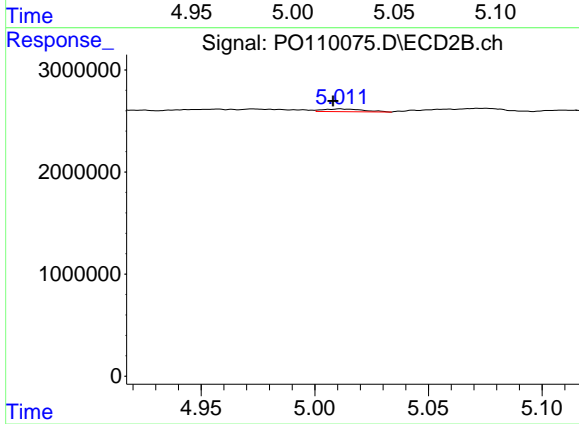
#21 AR-1248-1

R.T.: 4.777 min
 Delta R.T.: 0.006 min
 Response: 950281
 Conc: 7.82 ng/ml



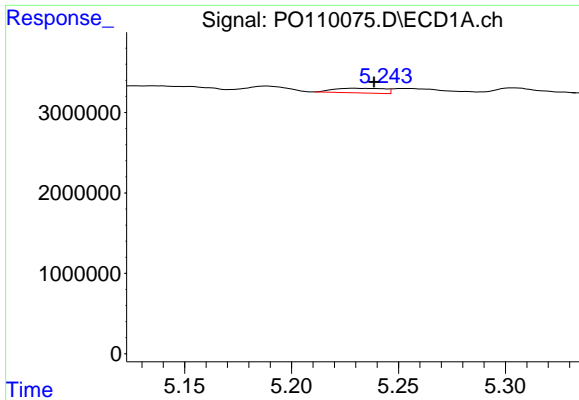
#22 AR-1248-2

R.T.: 5.029 min
 Delta R.T.: 0.005 min
 Response: 515368
 Conc: 1.71 ng/ml



#22 AR-1248-2

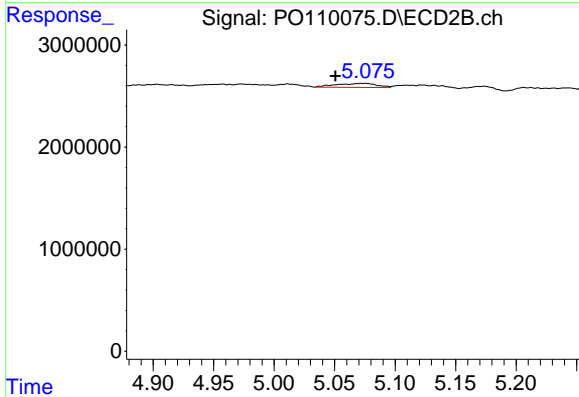
R.T.: 5.011 min
 Delta R.T.: 0.003 min
 Response: 321428
 Conc: 1.91 ng/ml



#23 AR-1248-3

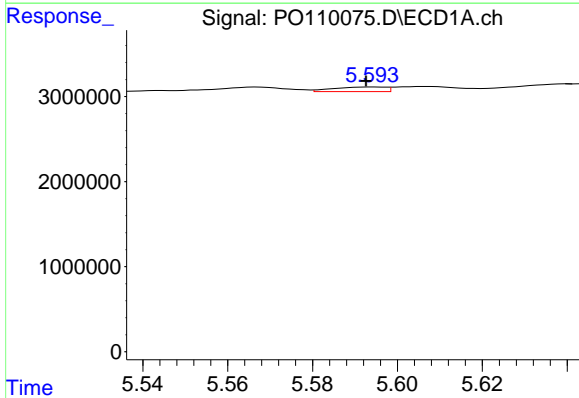
R.T.: 5.229 min
 Delta R.T.: -0.009 min
 Response: 962733
 Conc: 2.58 ng/ml

Instrument :
 ECD_O
 ClientSampleId :
 JEB410K-1-1



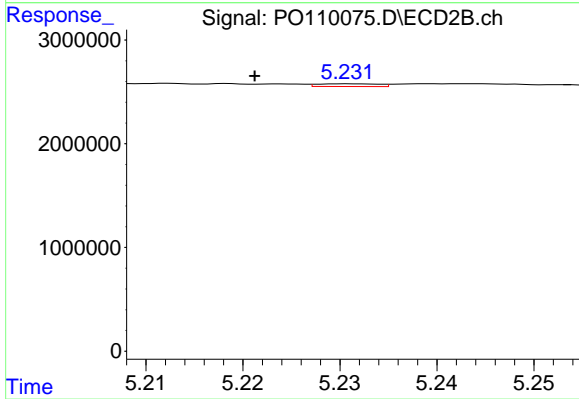
#23 AR-1248-3

R.T.: 5.075 min
 Delta R.T.: 0.025 min
 Response: 907893
 Conc: 5.01 ng/ml



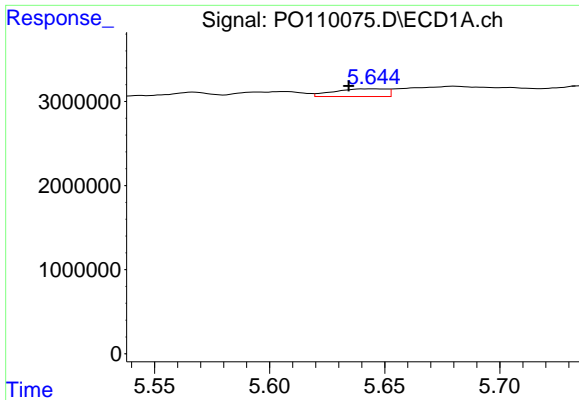
#24 AR-1248-4

R.T.: 5.595 min
 Delta R.T.: 0.002 min
 Response: 452922
 Conc: 0.86 ng/ml



#24 AR-1248-4

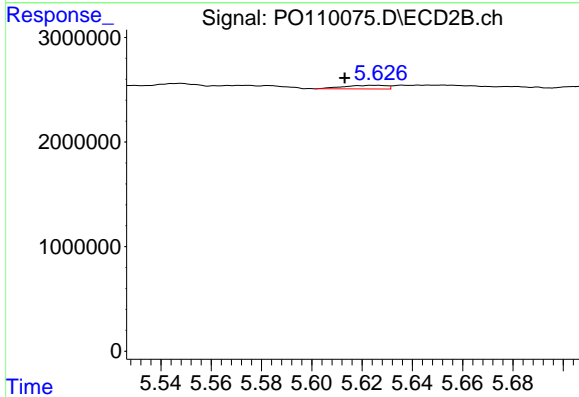
R.T.: 5.231 min
 Delta R.T.: 0.010 min
 Response: 114645
 Conc: 0.54 ng/ml



#25 AR-1248-5

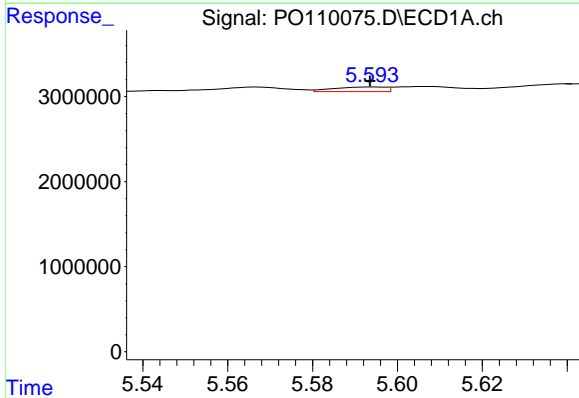
R.T.: 5.645 min
 Delta R.T.: 0.010 min
 Response: 1448344
 Conc: 3.88 ng/ml

Instrument :
 ECD_O
 ClientSampleId :
 JEB410K-1-1



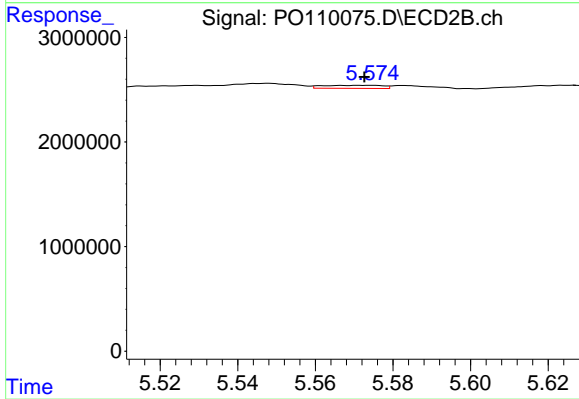
#25 AR-1248-5

R.T.: 5.625 min
 Delta R.T.: 0.012 min
 Response: 423596
 Conc: 2.04 ng/ml



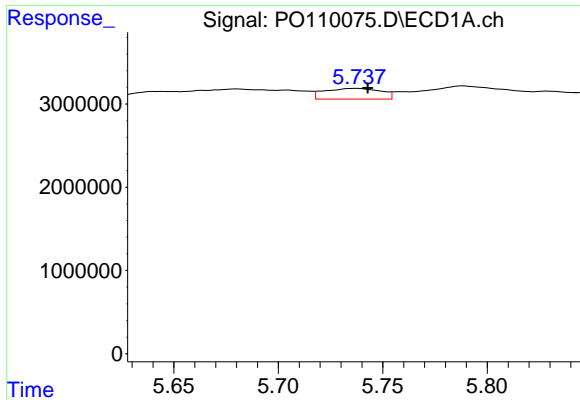
#26 AR-1254-1

R.T.: 5.595 min
 Delta R.T.: 0.001 min
 Response: 452922
 Conc: 0.80 ng/ml



#26 AR-1254-1

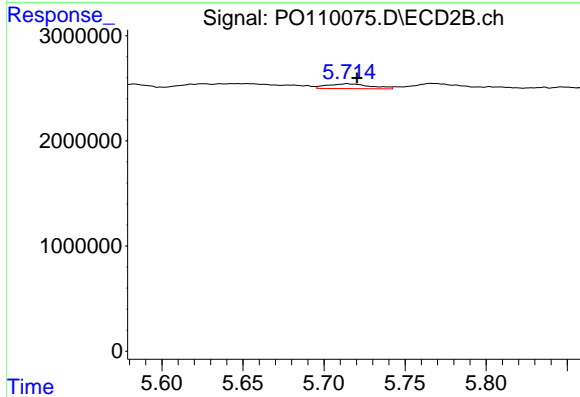
R.T.: 5.573 min
 Delta R.T.: 0.000 min
 Response: 313421
 Conc: 1.00 ng/ml



#27 AR-1254-2

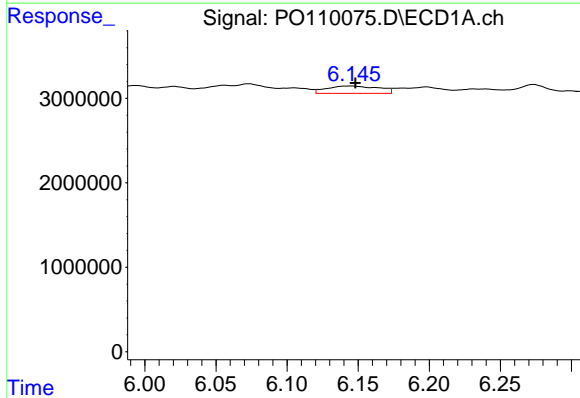
R.T.: 5.738 min
 Delta R.T.: -0.005 min
 Response: 2390644
 Conc: 4.97 ng/ml

Instrument :
 ECD_O
 ClientSampleId :
 JEB410K-1-1



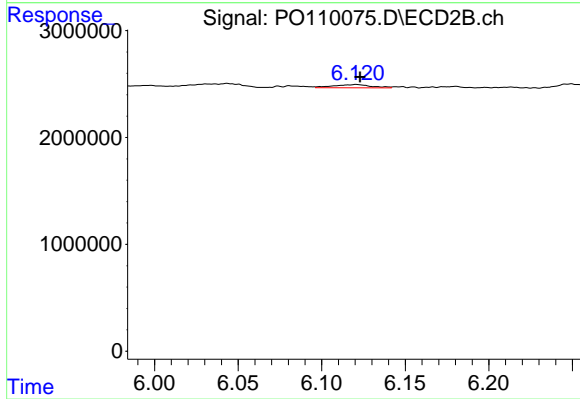
#27 AR-1254-2

R.T.: 5.714 min
 Delta R.T.: -0.006 min
 Response: 835231
 Conc: 3.08 ng/ml



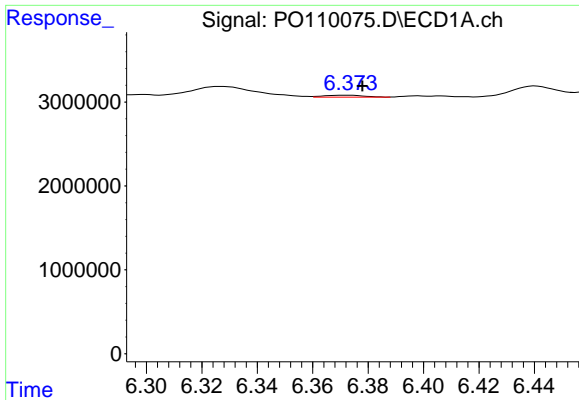
#28 AR-1254-3

R.T.: 6.145 min
 Delta R.T.: -0.003 min
 Response: 2230410
 Conc: 2.89 ng/ml



#28 AR-1254-3

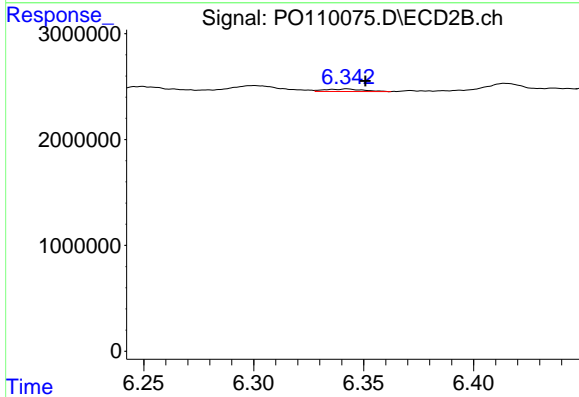
R.T.: 6.121 min
 Delta R.T.: -0.002 min
 Response: 483461
 Conc: 1.16 ng/ml



#29 AR-1254-4

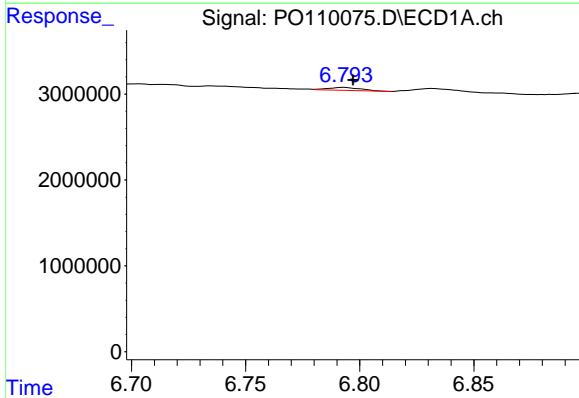
R.T.: 6.373 min
 Delta R.T.: -0.005 min
 Response: 214632
 Conc: 0.45 ng/ml

Instrument :
 ECD_O
 ClientSampleId :
 JEB410K-1-1



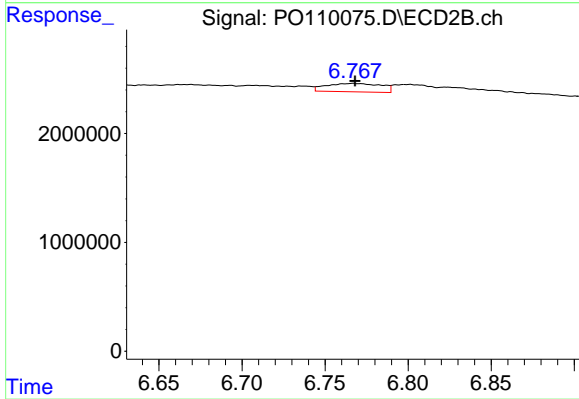
#29 AR-1254-4

R.T.: 6.343 min
 Delta R.T.: -0.008 min
 Response: 282454
 Conc: 1.16 ng/ml



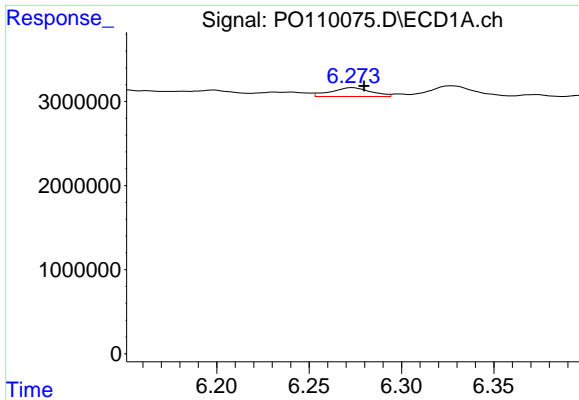
#30 AR-1254-5

R.T.: 6.793 min
 Delta R.T.: -0.004 min
 Response: 330041
 Conc: 0.51 ng/ml



#30 AR-1254-5

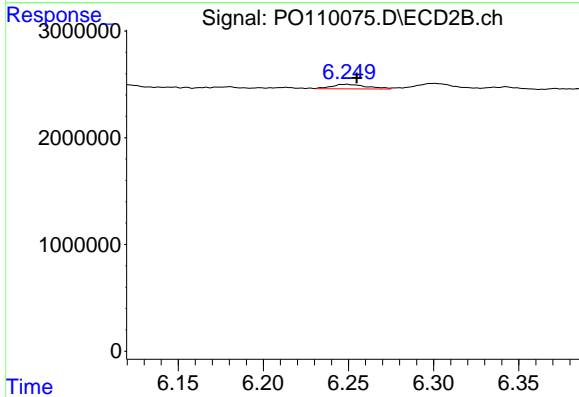
R.T.: 6.767 min
 Delta R.T.: -0.001 min
 Response: 1787622
 Conc: 5.32 ng/ml



#31 AR-1260-1

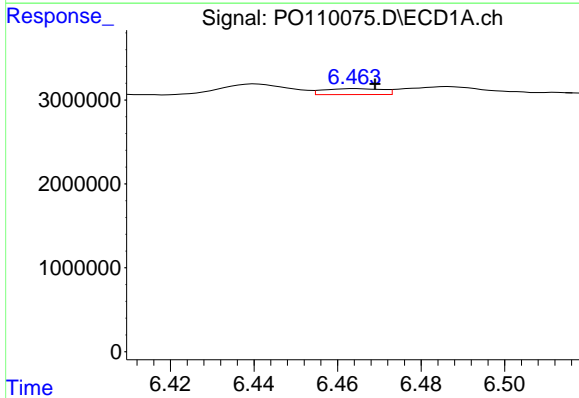
R.T.: 6.273 min
 Delta R.T.: -0.006 min
 Response: 1587582
 Conc: 3.37 ng/ml

Instrument :
 ECD_O
 ClientSampleId :
 JEB410K-1-1



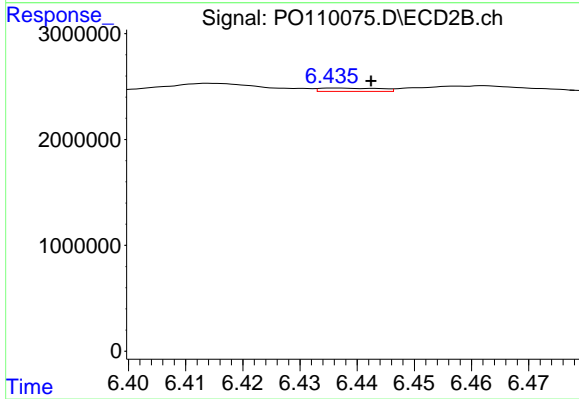
#31 AR-1260-1

R.T.: 6.249 min
 Delta R.T.: -0.006 min
 Response: 618807
 Conc: 2.42 ng/ml



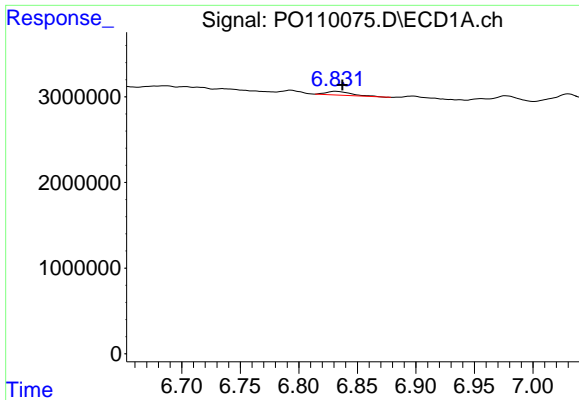
#32 AR-1260-2

R.T.: 6.464 min
 Delta R.T.: -0.005 min
 Response: 698150
 Conc: 1.17 ng/ml



#32 AR-1260-2

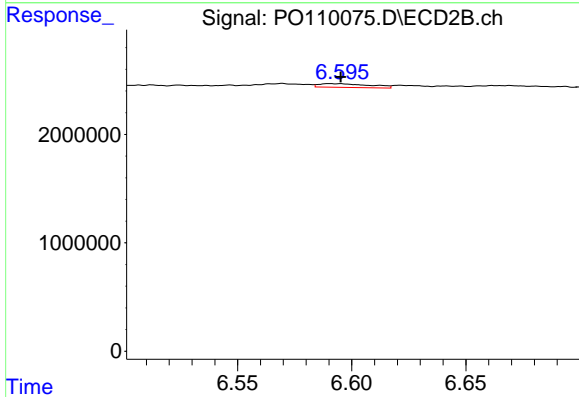
R.T.: 6.437 min
 Delta R.T.: -0.006 min
 Response: 229575
 Conc: 0.76 ng/ml



#33 AR-1260-3

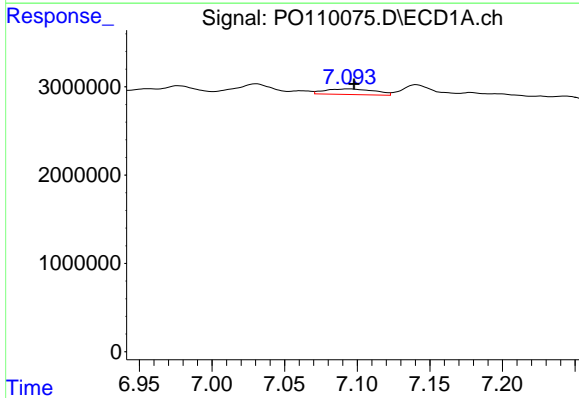
R.T.: 6.832 min
 Delta R.T.: -0.006 min
 Response: 662419
 Conc: 1.36 ng/ml

Instrument :
 ECD_O
 ClientSampleId :
 JEB410K-1-1



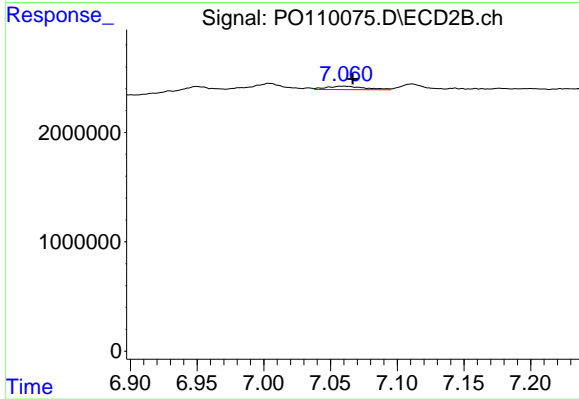
#33 AR-1260-3

R.T.: 6.591 min
 Delta R.T.: -0.005 min
 Response: 537070
 Conc: 1.86 ng/ml



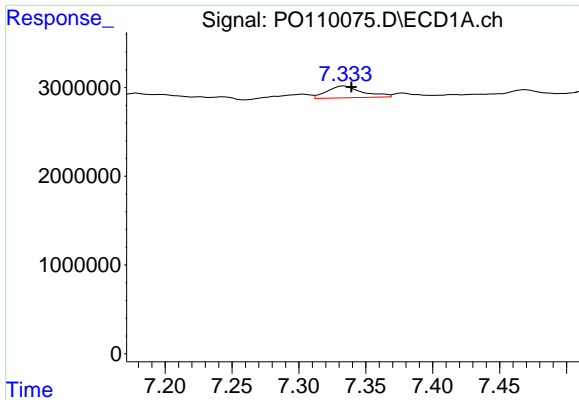
#34 AR-1260-4

R.T.: 7.094 min
 Delta R.T.: -0.004 min
 Response: 1511558
 Conc: 3.56 ng/ml



#34 AR-1260-4

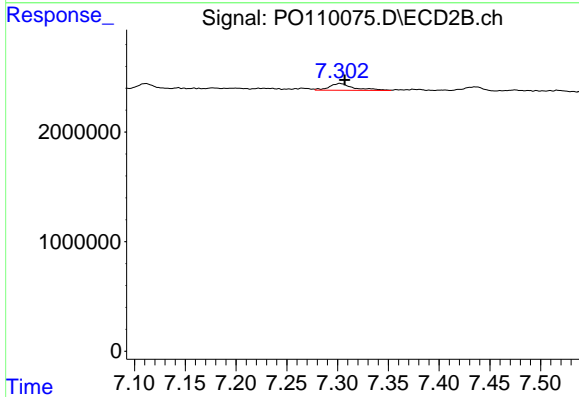
R.T.: 7.059 min
 Delta R.T.: -0.007 min
 Response: 630632
 Conc: 2.93 ng/ml



#35 AR-1260-5

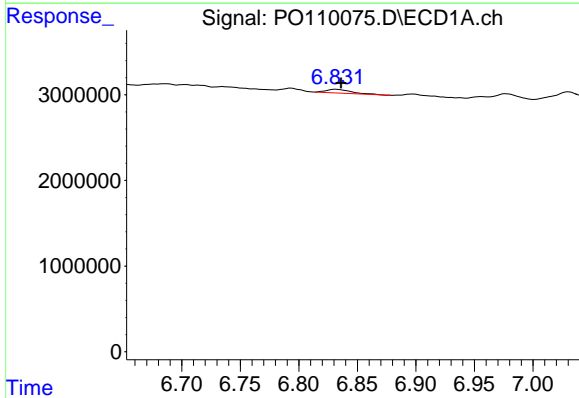
R.T.: 7.333 min
 Delta R.T.: -0.006 min
 Response: 2457345
 Conc: 2.35 ng/ml

Instrument :
 ECD_O
 ClientSampleId :
 JEB410K-1-1



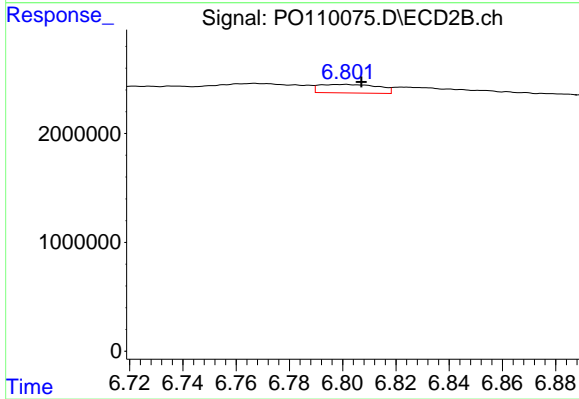
#35 AR-1260-5

R.T.: 7.302 min
 Delta R.T.: -0.005 min
 Response: 1063754
 Conc: 2.13 ng/ml



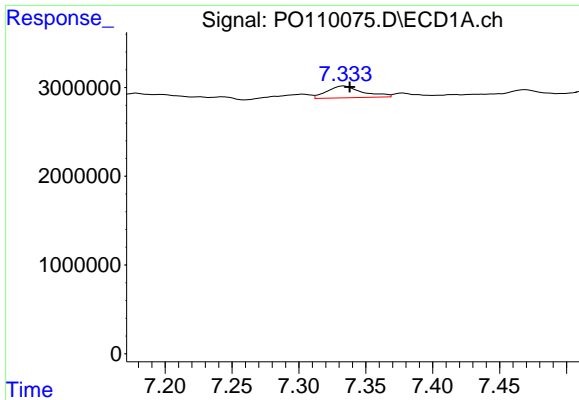
#36 AR-1262-1

R.T.: 6.832 min
 Delta R.T.: -0.004 min
 Response: 662419
 Conc: 0.96 ng/ml



#36 AR-1262-1

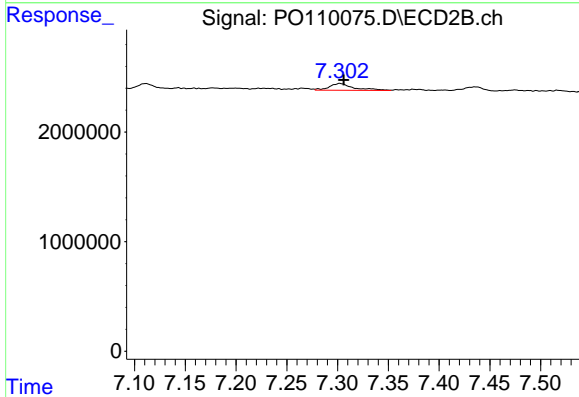
R.T.: 6.801 min
 Delta R.T.: -0.006 min
 Response: 1207953
 Conc: 3.51 ng/ml



#37 AR-1262-2

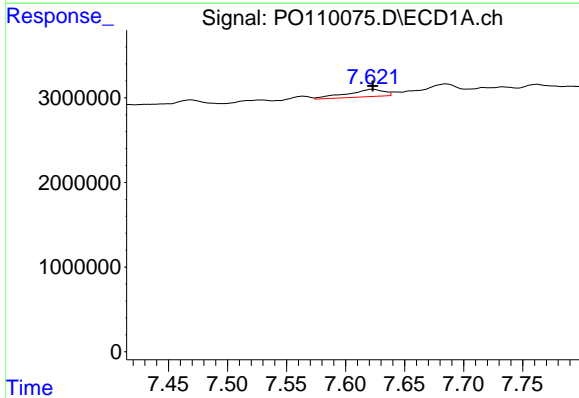
R.T.: 7.333 min
 Delta R.T.: -0.005 min
 Response: 2457345
 Conc: 2.06 ng/ml

Instrument :
 ECD_O
 ClientSampleId :
 JEB410K-1-1



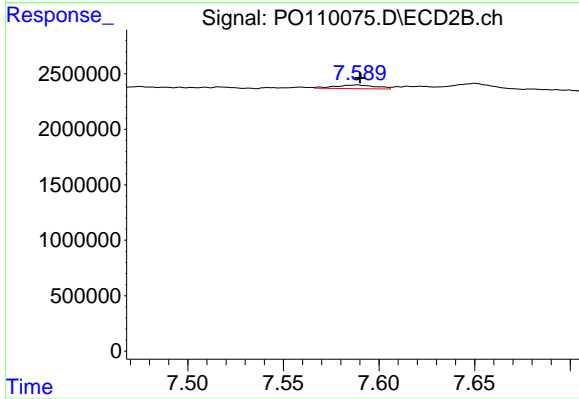
#37 AR-1262-2

R.T.: 7.302 min
 Delta R.T.: -0.004 min
 Response: 1063754
 Conc: 1.98 ng/ml



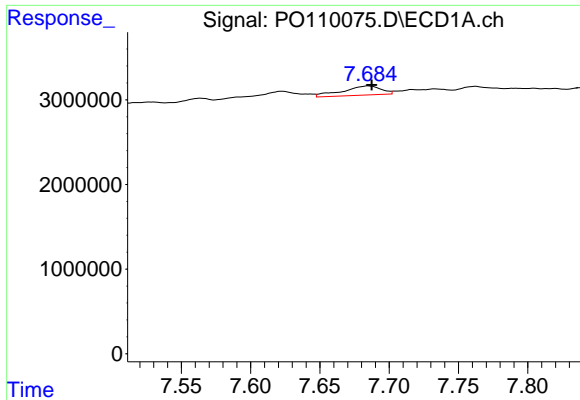
#38 AR-1262-3

R.T.: 7.623 min
 Delta R.T.: 0.000 min
 Response: 1864828
 Conc: 3.96 ng/ml



#38 AR-1262-3

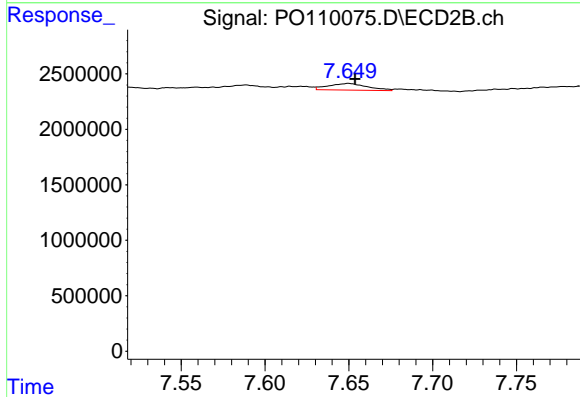
R.T.: 7.589 min
 Delta R.T.: -0.002 min
 Response: 497209
 Conc: 2.56 ng/ml



#39 AR-1262-4

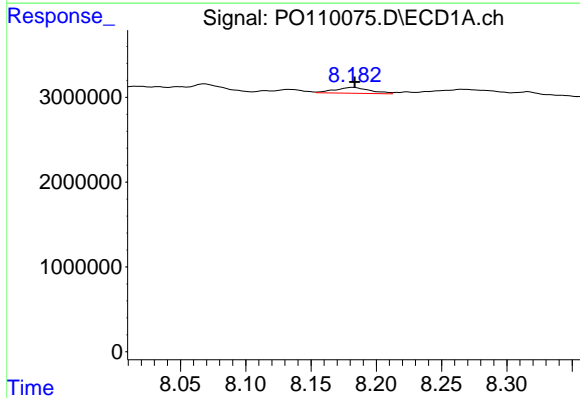
R.T.: 7.685 min
 Delta R.T.: -0.002 min
 Response: 2119571
 Conc: 2.42 ng/ml

Instrument :
 ECD_O
 ClientSampleId :
 JEB410K-1-1



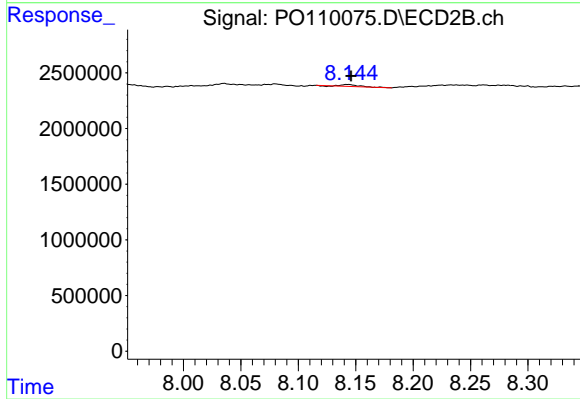
#39 AR-1262-4

R.T.: 7.650 min
 Delta R.T.: -0.004 min
 Response: 974684
 Conc: 2.69 ng/ml



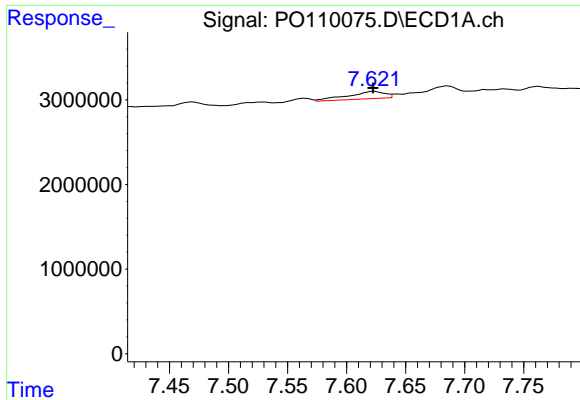
#40 AR-1262-5

R.T.: 8.182 min
 Delta R.T.: -0.001 min
 Response: 1303048
 Conc: 3.30 ng/ml



#40 AR-1262-5

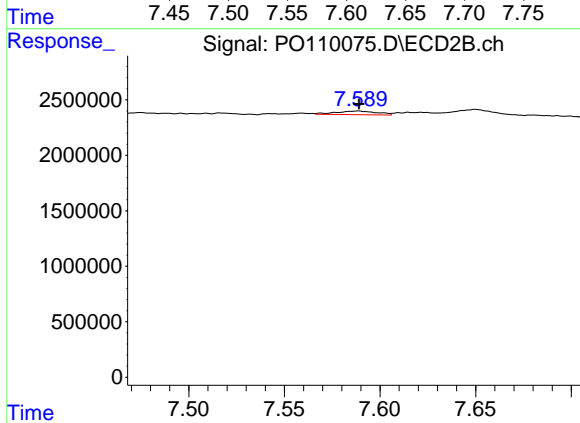
R.T.: 8.143 min
 Delta R.T.: -0.003 min
 Response: 136800
 Conc: 0.97 ng/ml



#41 AR-1268-1

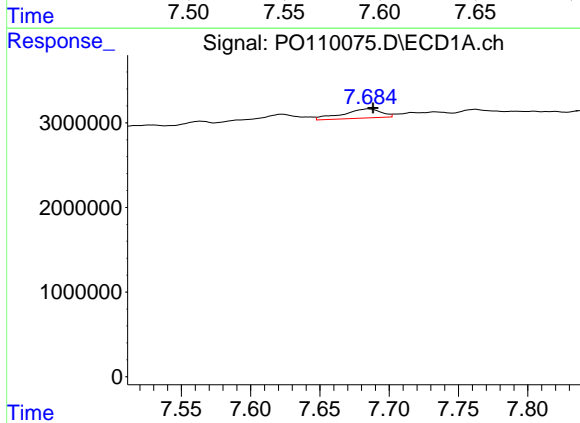
R.T.: 7.623 min
 Delta R.T.: 0.000 min
 Response: 1864828
 Conc: 1.33 ng/ml

Instrument :
 ECD_O
 ClientSampleId :
 JEB410K-1-1



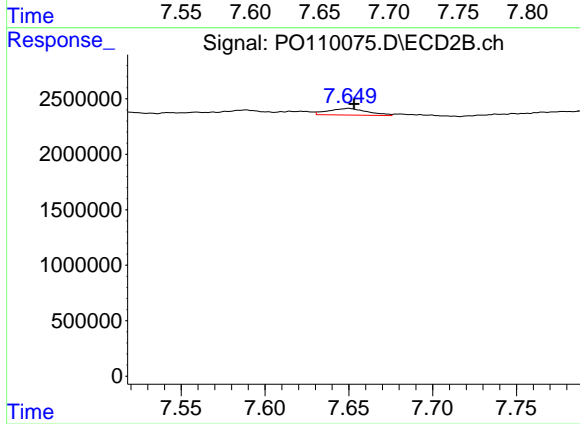
#41 AR-1268-1

R.T.: 7.589 min
 Delta R.T.: 0.000 min
 Response: 497209
 Conc: 0.85 ng/ml



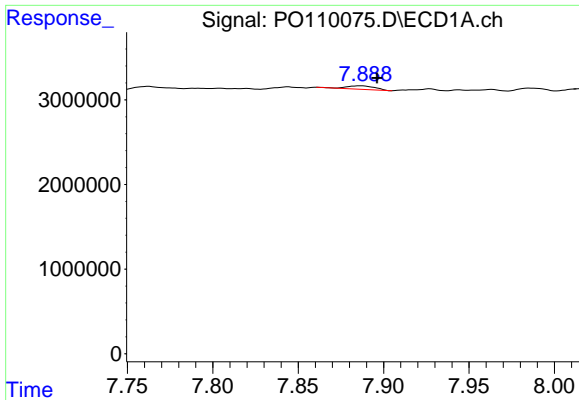
#42 AR-1268-2

R.T.: 7.685 min
 Delta R.T.: -0.003 min
 Response: 2119571
 Conc: 1.66 ng/ml



#42 AR-1268-2

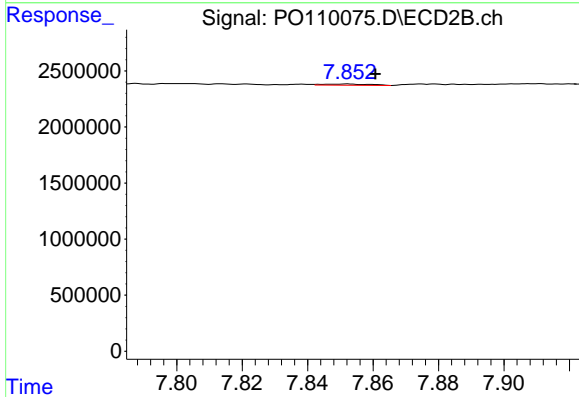
R.T.: 7.650 min
 Delta R.T.: -0.003 min
 Response: 974684
 Conc: 1.81 ng/ml



#43 AR-1268-3

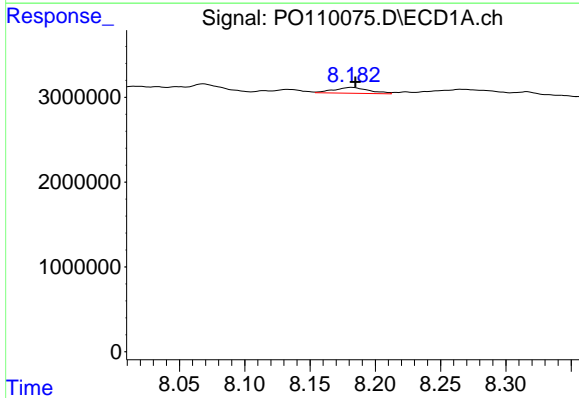
R.T.: 7.887 min
 Delta R.T.: -0.009 min
 Response: 467488
 Conc: 0.45 ng/ml

Instrument :
 ECD_O
 ClientSampleId :
 JEB410K-1-1



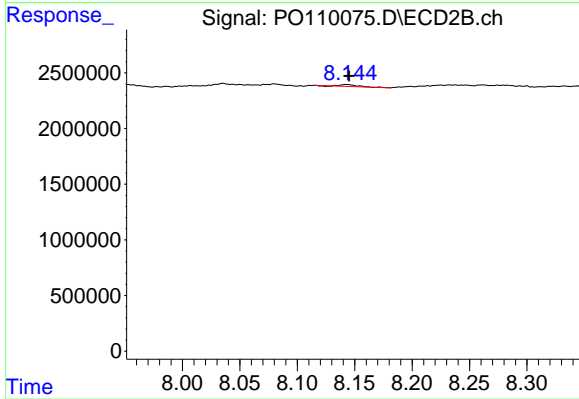
#43 AR-1268-3

R.T.: 7.852 min
 Delta R.T.: -0.008 min
 Response: 99577
 Conc: 0.24 ng/ml



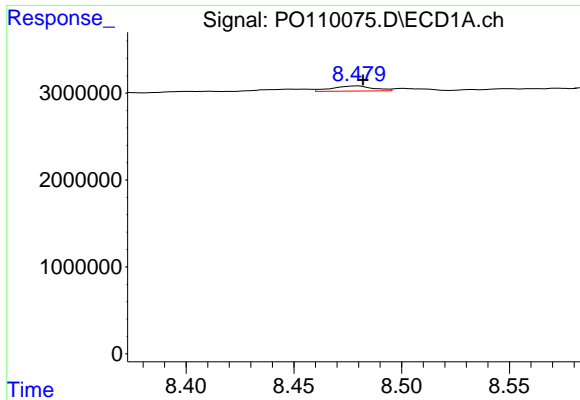
#44 AR-1268-4

R.T.: 8.182 min
 Delta R.T.: -0.002 min
 Response: 1303048
 Conc: 2.95 ng/ml



#44 AR-1268-4

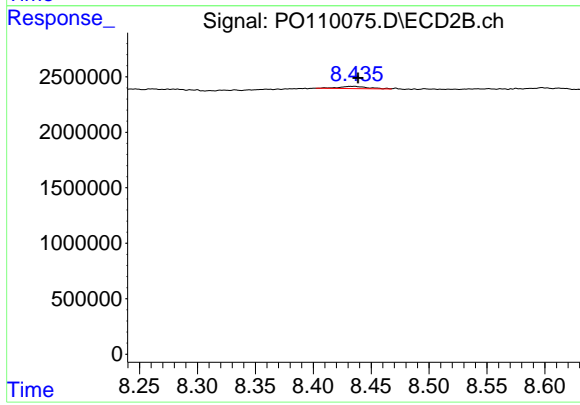
R.T.: 8.143 min
 Delta R.T.: -0.002 min
 Response: 136800
 Conc: 0.85 ng/ml



#45 AR-1268-5

R.T.: 8.479 min
 Delta R.T.: -0.003 min
 Response: 807646
 Conc: 0.25 ng/ml

Instrument :
 ECD_O
 ClientSampleId :
 JEB410K-1-1



#45 AR-1268-5

R.T.: 8.435 min
 Delta R.T.: -0.004 min
 Response: 347463
 Conc: 0.35 ng/ml