

Data Path : Z:\pestpcbsrv\HPCHEM1\ECD_O\Data\P0032725\
 Data File : P0110061.D
 Signal(s) : Signal #1: ECD1A.ch Signal #2: ECD2B.ch
 Acq On : 27 Mar 2025 20:10
 Operator : YP/AJ
 Sample : Q1660-07 10X
 Misc :
 ALS Vial : 26 Sample Multiplier: 1

Instrument :
 ECD_O
ClientSampleId :
 KMA902Z-1-1

Manual Integrations
APPROVED
 Reviewed By :Yogesh Patel 03/28/2025
 Supervised By :mohammad ahmed 03/31/2025

Integration File signal 1: autoint1.e
 Integration File signal 2: autoint2.e
 Quant Time: Mar 28 02:34:10 2025
 Quant Method : Z:\pestpcbsrv\HPCHEM1\ECD_O\methods\P0031925.M
 Quant Title : GC EXTRACTABLES
 QLast Update : Wed Mar 19 02:52:01 2025
 Response via : Initial Calibration
 Integrator: ChemStation

Volume Inj. : 2 µl
 Signal #1 Phase : ZB-MR1 Signal #2 Phase: ZB-MR2
 Signal #1 Info : 30Mx0.32mmx 0.50µ Signal #2 Info : 30M x 0.32mm x 0.25µm

Compound	RT#1	RT#2	Resp#1	Resp#2	ng/ml	ng/ml

System Monitoring Compounds						
1) SA Tetrachlo...	3.691	3.688	9863497	5812465	1.084m	1.108m
2) SA Decachlor...	8.742	8.693	10405883	3249109	1.353	1.339

Target Compounds

(f)=RT Delta > 1/2 Window (#)=Amounts differ by > 25% (m)=manual int.

Data Path : Z:\pestpcbsrv\HPCHEM1\ECD_O\Data\PO032725\
 Data File : PO110061.D
 Signal(s) : Signal #1: ECD1A.ch Signal #2: ECD2B.ch
 Acq On : 27 Mar 2025 20:10
 Operator : YP/AJ
 Sample : Q1660-07 10X
 Misc :
 ALS Vial : 26 Sample Multiplier: 1

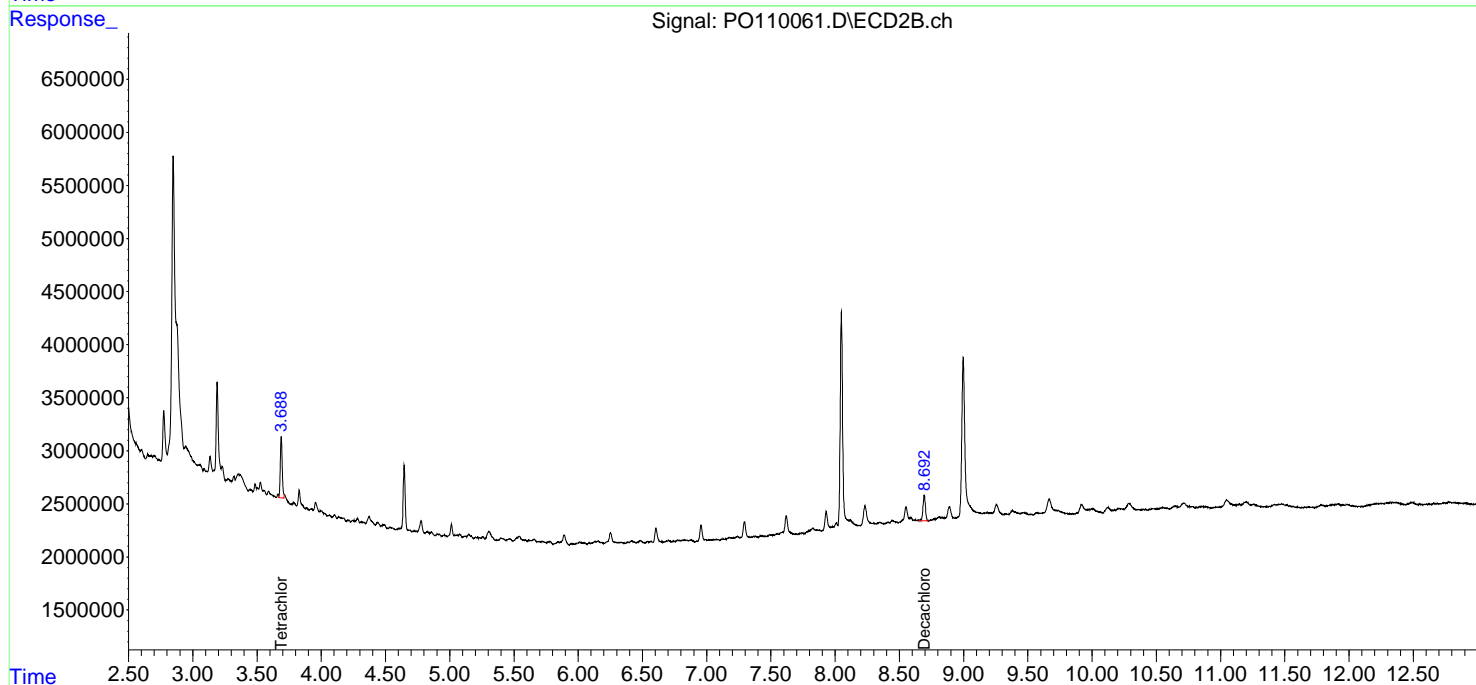
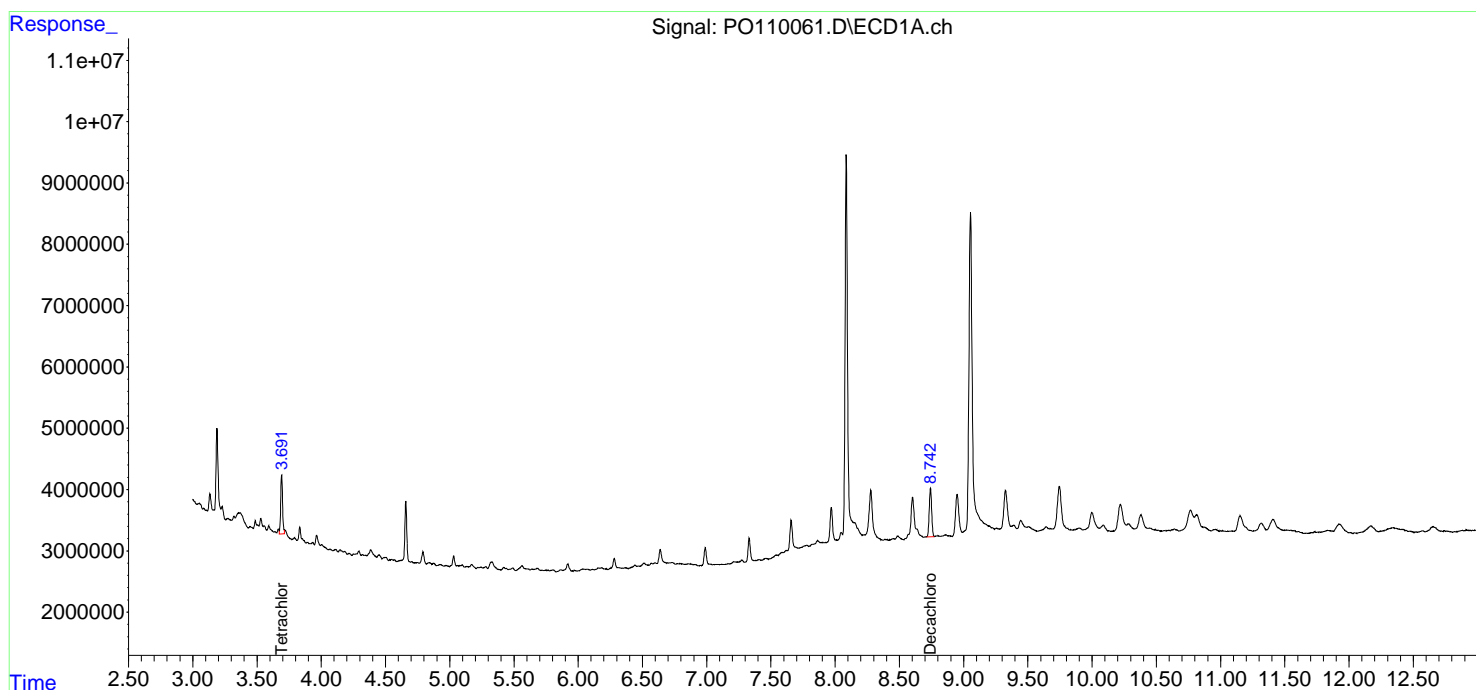
Instrument :
 ECD_O
 ClientSampleId :
 KMA902Z-1-1

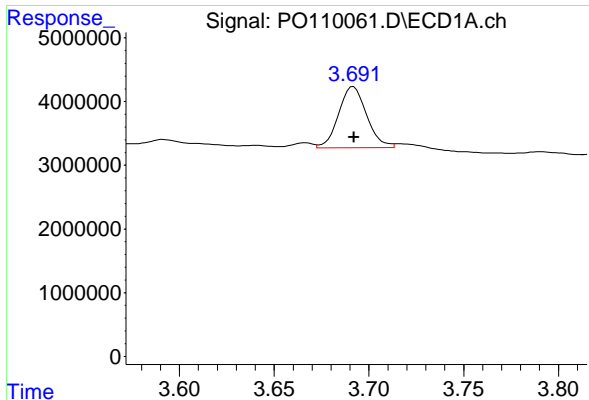
Manual Integrations
APPROVED

Reviewed By :Yogesh Patel 03/28/2025
 Supervised By :mohammad ahmed 03/31/2025

Integration File signal 1: autoint1.e
 Integration File signal 2: autoint2.e
 Quant Time: Mar 28 02:34:10 2025
 Quant Method : Z:\pestpcbsrv\HPCHEM1\ECD_O\methods\PO031925.M
 Quant Title : GC EXTRACTABLES
 QLast Update : Wed Mar 19 02:52:01 2025
 Response via : Initial Calibration
 Integrator: ChemStation

Volume Inj. : 2 µl
 Signal #1 Phase : ZB-MR1 Signal #2 Phase: ZB-MR2
 Signal #1 Info : 30Mx0.32mmx 0.50µm Signal #2 Info : 30M x 0.32mm x 0.25µm





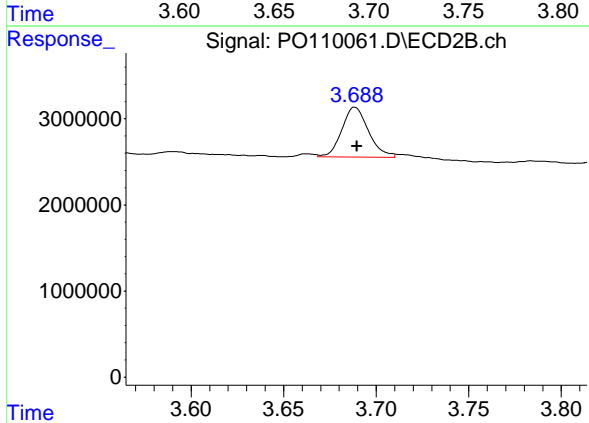
#1 Tetrachloro-m-xylene

R.T.: 3.691 min
 Delta R.T.: 0.000 min
 Response: 9863497
 Conc: 1.08 ng/ml

Instrument :
 ECD_O
 ClientSampleId :
 KMA902Z-1-1

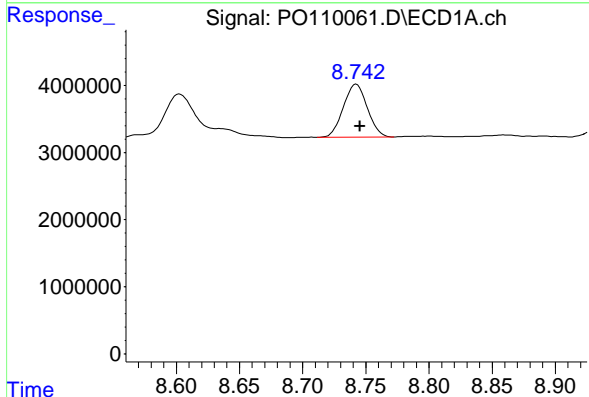
Manual Integrations
 APPROVED

Reviewed By :Yogesh Patel 03/28/2025
 Supervised By :mohammad ahmed 03/31/2025



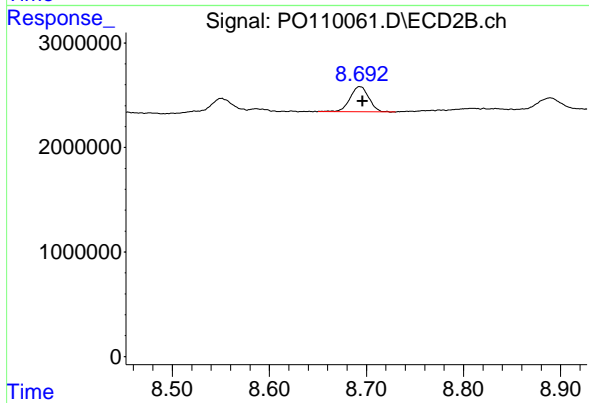
#1 Tetrachloro-m-xylene

R.T.: 3.688 min
 Delta R.T.: -0.002 min
 Response: 5812465
 Conc: 1.11 ng/ml m



#2 Decachlorobiphenyl

R.T.: 8.742 min
 Delta R.T.: -0.003 min
 Response: 10405883
 Conc: 1.35 ng/ml



#2 Decachlorobiphenyl

R.T.: 8.693 min
 Delta R.T.: -0.003 min
 Response: 3249109
 Conc: 1.34 ng/ml