

Data Path : Z:\pestpcbsrv\HPCHEM1\ECD\_0\Data\P0032922\  
 Data File : P0085727.D  
 Signal(s) : Signal #1: ECD1A.CH Signal #2: ECD2B.CH  
 Acq On : 29 Mar 2022 21:29  
 Operator : YP\AJ  
 Sample : N2158-01  
 Misc :  
 ALS Vial : 30 Sample Multiplier: 1

**Instrument :**  
 ECD\_0  
**ClientSampleId :**  
 OR-02-032822

**Manual Integrations**  
**APPROVED**  
 Reviewed By :Yogesh Patel 03/30/2022  
 Supervised By :mohammad ahmed 03/30/2022

Integration File signal 1: autoint1.e  
 Integration File signal 2: autoint2.e  
 Quant Time: Mar 30 03:26:35 2022  
 Quant Method : Z:\pestpcbsrv\HPCHEM1\ECD\_0\methods\P0032822.M  
 Quant Title : GC EXTRACTABLES  
 QLast Update : Tue Mar 29 06:17:49 2022  
 Response via : Initial Calibration  
 Integrator: ChemStation 6890 Scale Mode: Small noise peaks clipped

Volume Inj. : 2 µl  
 Signal #1 Phase : ZB-MR1 Signal #2 Phase: ZB-MR2  
 Signal #1 Info : 30Mx0.32mmx 0.50µ Signal #2 Info : 30M x 0.32mm x 0.25µm

Compound	RT#1	RT#2	Resp#1	Resp#2	ng/ml	ng/ml
-----						
System Monitoring Compounds						
1) SA Tetrachlo...	4.460	3.561	2984559	823855	14.960m	17.137
2) SA Decachlor...	10.352	8.578	2124600	520612	16.201	14.640

Target Compounds

(f)=RT Delta > 1/2 Window (#)=Amounts differ by > 25% (m)=manual int.

Data Path : Z:\pestpcbsrv\HPCHEM1\ECD\_O\Data\P0032922\  
 Data File : P0085727.D  
 Signal(s) : Signal #1: ECD1A.CH Signal #2: ECD2B.CH  
 Acq On : 29 Mar 2022 21:29  
 Operator : YP\AJ  
 Sample : N2158-01  
 Misc :  
 ALS Vial : 30 Sample Multiplier: 1

**Instrument :**

ECD\_O

**ClientSampleId :**

OR-02-032822

**Manual Integrations**

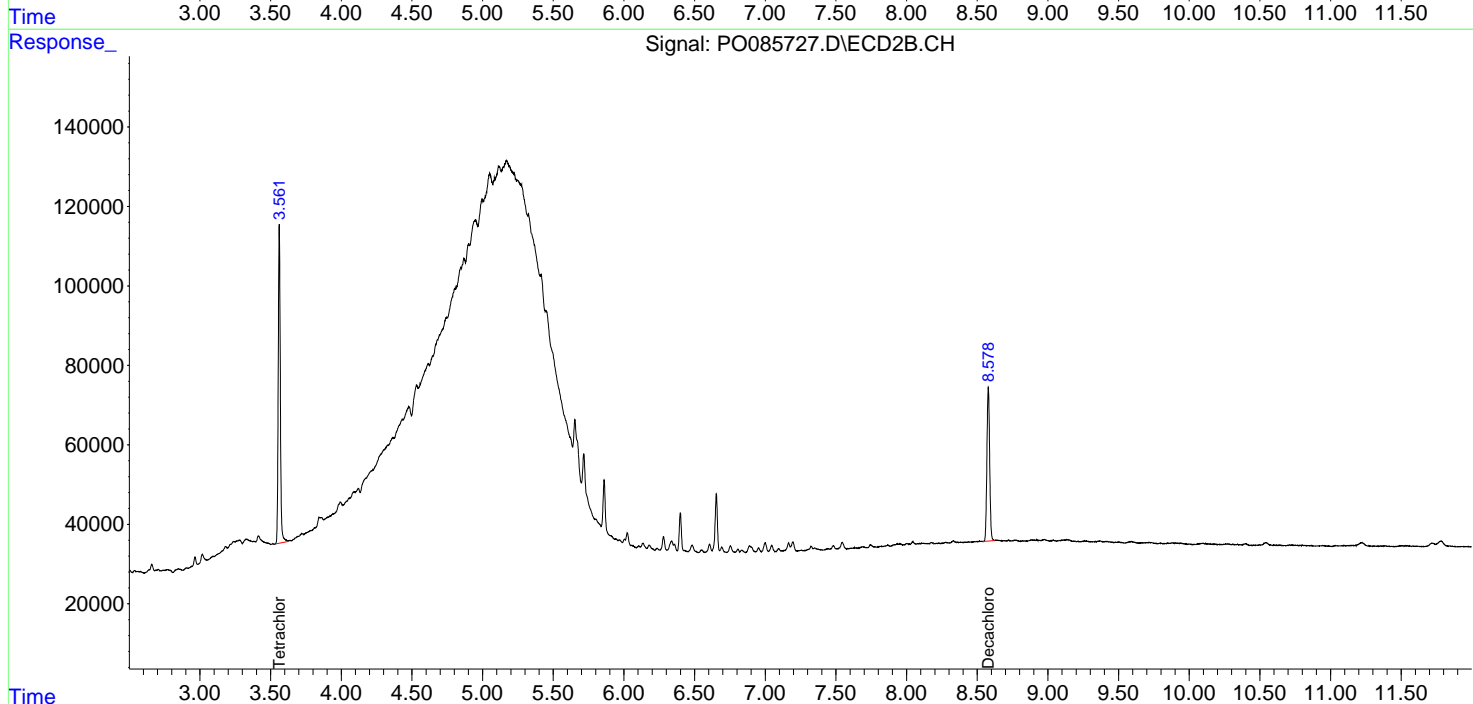
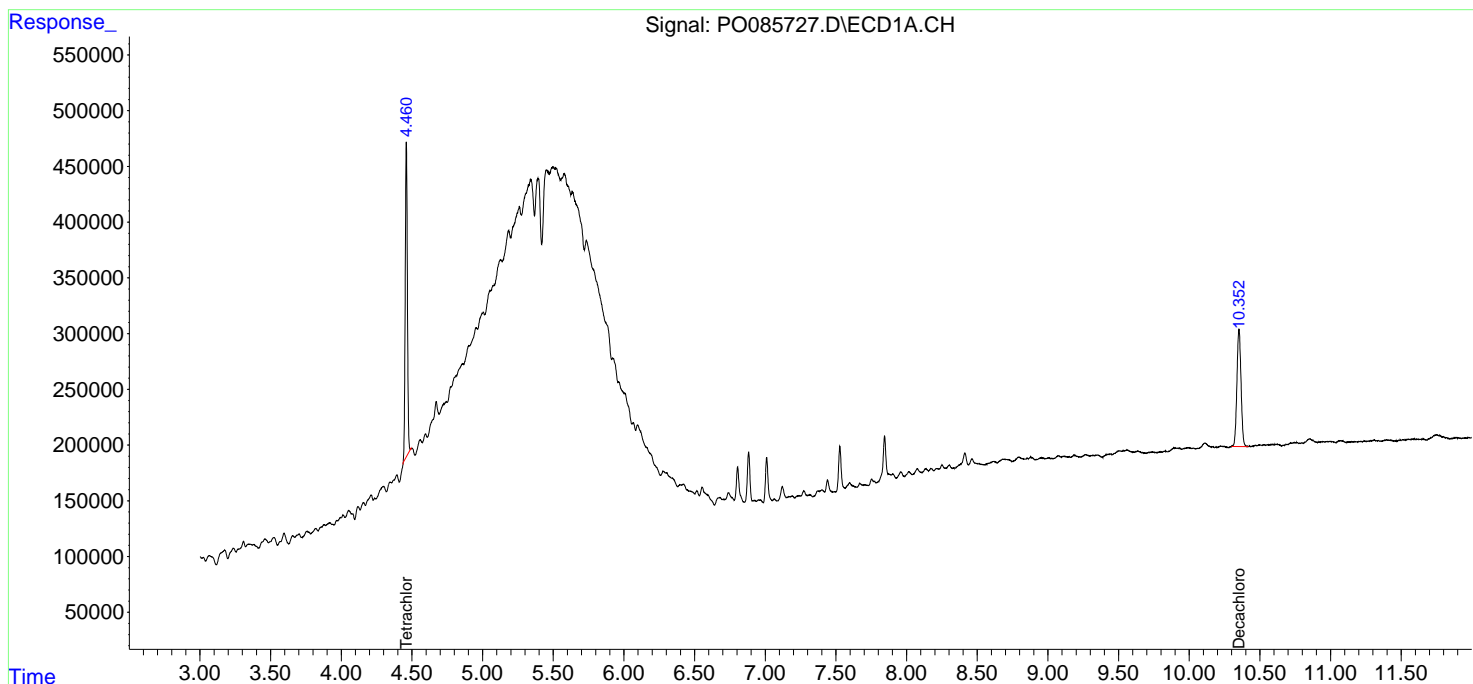
**APPROVED**

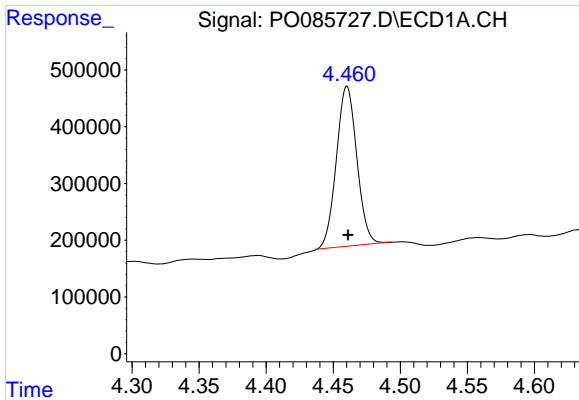
Reviewed By :Yogesh Patel 03/30/2022

Supervised By :mohammad ahmed 03/30/2022

Integration File signal 1: autoint1.e  
 Integration File signal 2: autoint2.e  
 Quant Time: Mar 30 03:26:35 2022  
 Quant Method : Z:\pestpcbsrv\HPCHEM1\ECD\_O\methods\P0032822.M  
 Quant Title : GC EXTRACTABLES  
 QLast Update : Tue Mar 29 06:17:49 2022  
 Response via : Initial Calibration  
 Integrator: ChemStation 6890 Scale Mode: Small noise peaks clipped

Volume Inj. : 2 µl  
 Signal #1 Phase : ZB-MR1 Signal #2 Phase: ZB-MR2  
 Signal #1 Info : 30Mx0.32mmx 0.50µ Signal #2 Info : 30M x 0.32mm x 0.25µm

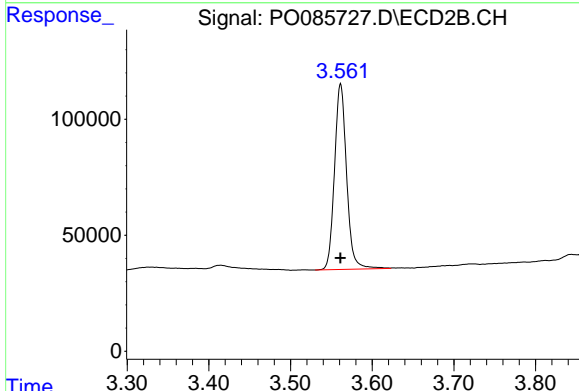




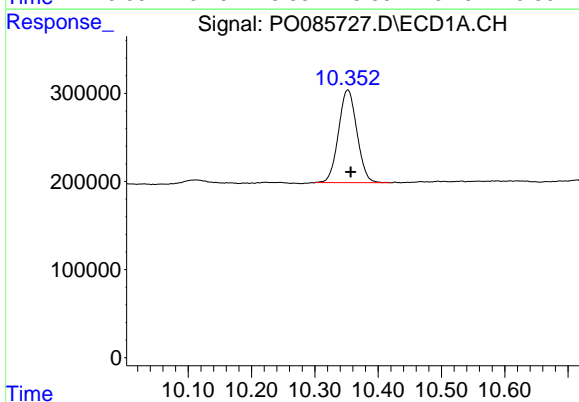
#1 Tetrachloro-m-xylene  
 R.T.: 4.460 min  
 Delta R.T.: -0.001 min  
 Response: 2984559  
 Conc: 14.96 ng/ml

Instrument :  
 ECD\_O  
 ClientSampleId :  
 OR-02-032822

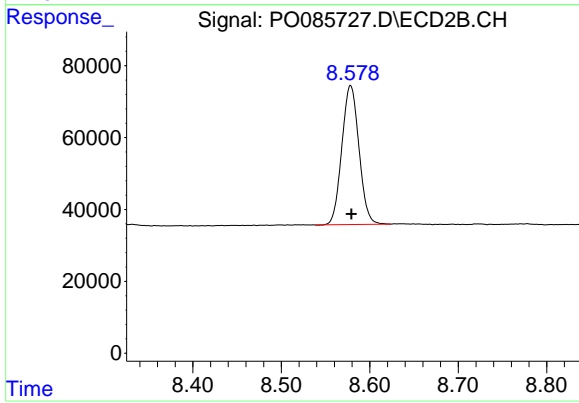
**Manual Integrations**  
**APPROVED**  
 Reviewed By :Yogesh Patel 03/30/2022  
 Supervised By :mohammad ahmed 03/30/2022



#1 Tetrachloro-m-xylene  
 R.T.: 3.561 min  
 Delta R.T.: 0.000 min  
 Response: 823855  
 Conc: 17.14 ng/ml



#2 Decachlorobiphenyl  
 R.T.: 10.352 min  
 Delta R.T.: -0.005 min  
 Response: 2124600  
 Conc: 16.20 ng/ml



#2 Decachlorobiphenyl  
 R.T.: 8.578 min  
 Delta R.T.: 0.000 min  
 Response: 520612  
 Conc: 14.64 ng/ml