

Data Path : Z:\pestpcbsrv\HPCHEM1\ECD_0\Data\P0033021\
 Data File : P0076595.D
 Signal(s) : Signal #1: ECD1A.CH Signal #2: ECD2B.CH
 Acq On : 30 Mar 2021 12:39
 Operator : DD\AJ
 Sample : M1822-02
 Misc :
 ALS Vial : 11 Sample Multiplier: 1

Instrument :
 ECD_0
 ClientSampleId :
 BLACK-DRUM

Integration File signal 1: autoint1.e
 Integration File signal 2: autoint2.e
 Quant Time: Mar 30 13:51:21 2021
 Quant Method : Z:\pestpcbsrv\HPCHEM1\ECD_0\methods\P0032421.M
 Quant Title : GC EXTRACTABLES
 QLast Update : Wed Mar 24 05:38:14 2021
 Response via : Initial Calibration
 Integrator: ChemStation 6890 Scale Mode: Small noise peaks clipped

Volume Inj. : 2 µl
 Signal #1 Phase : ZB-MR1 Signal #2 Phase: ZB-MR2
 Signal #1 Info : 30Mx0.32mmx 0.50µ Signal #2 Info : 30M x 0.32mm x 0.25µm

Compound	RT#1	RT#2	Resp#1	Resp#2	ng/ml	ng/ml

System Monitoring Compounds						
1) SA Tetrachlo...	4.918	3.937	1497126	912386	17.094	16.633
2) SA Decachlor...	10.887	9.187	1213117	800169	18.636	16.981

Target Compounds

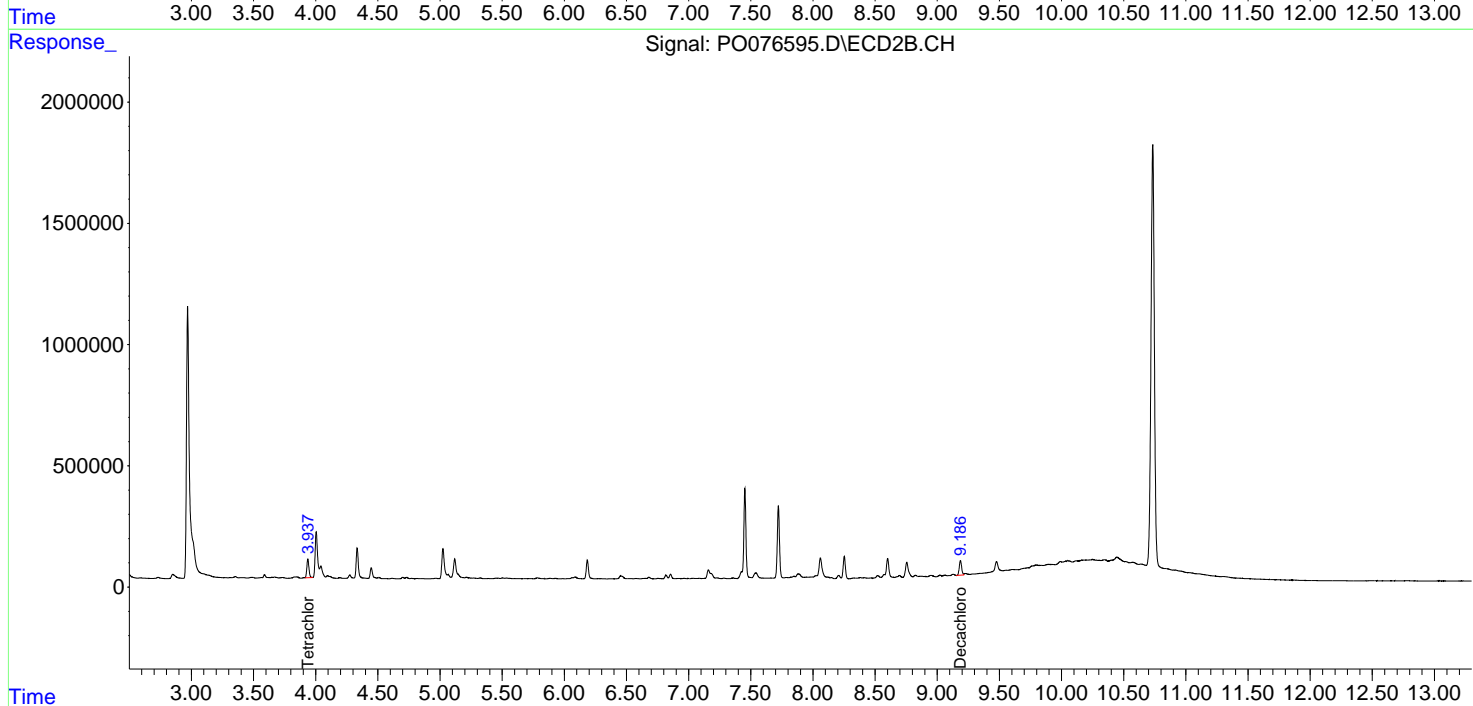
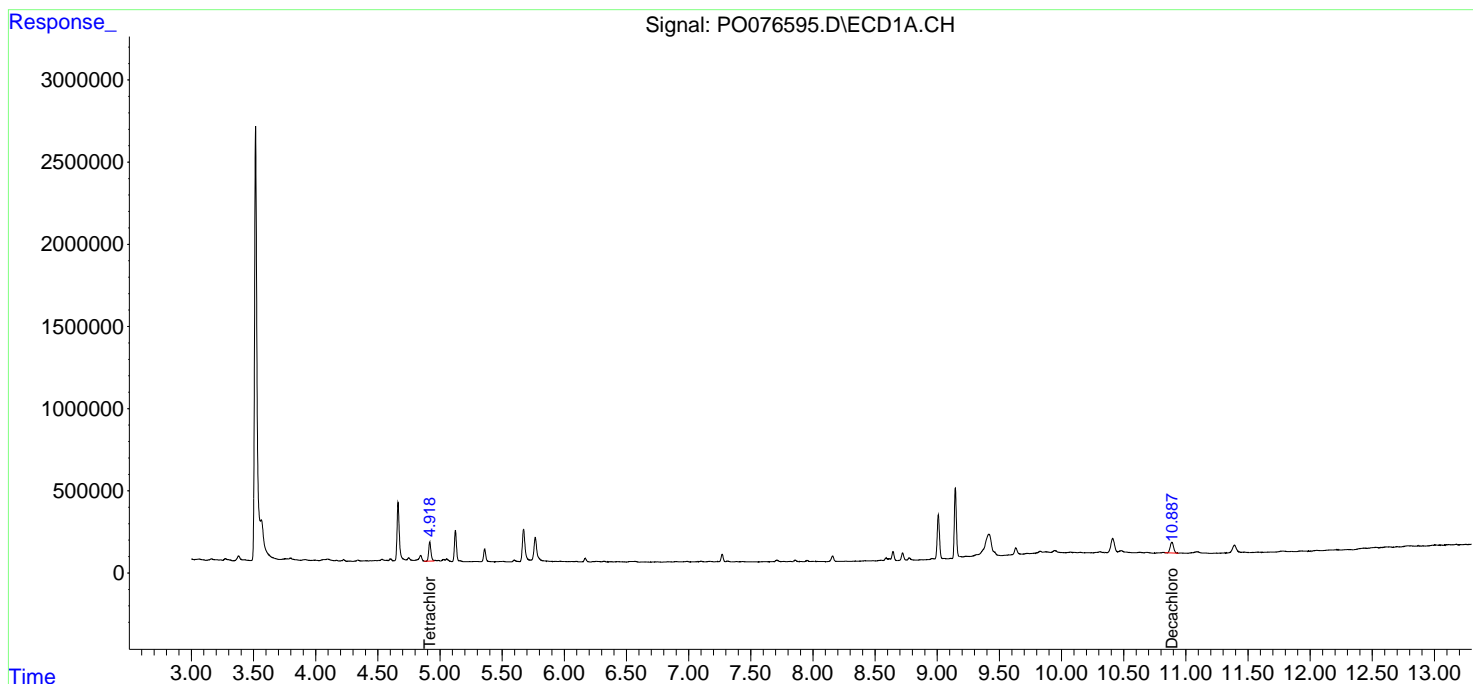
(f)=RT Delta > 1/2 Window (#)=Amounts differ by > 25% (m)=manual int.

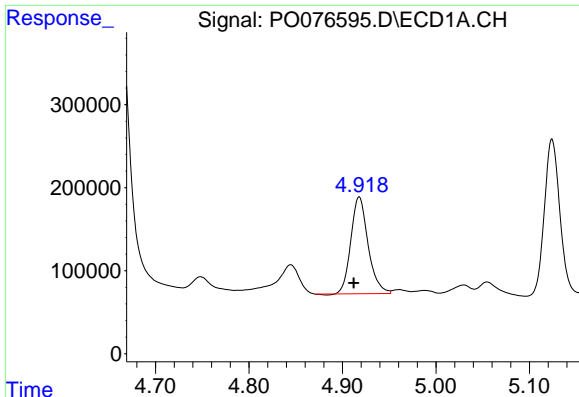
Data Path : Z:\pestpcbsrv\HPCHEM1\ECD_0\Data\P0033021\
 Data File : P0076595.D
 Signal(s) : Signal #1: ECD1A.CH Signal #2: ECD2B.CH
 Acq On : 30 Mar 2021 12:39
 Operator : DD\AJ
 Sample : M1822-02
 Misc :
 ALS Vial : 11 Sample Multiplier: 1

Instrument :
 ECD_O
 ClientSampleId :
 BLACK-DRUM

Integration File signal 1: autoint1.e
 Integration File signal 2: autoint2.e
 Quant Time: Mar 30 13:51:21 2021
 Quant Method : Z:\pestpcbsrv\HPCHEM1\ECD_0\methods\P0032421.M
 Quant Title : GC EXTRACTABLES
 QLast Update : Wed Mar 24 05:38:14 2021
 Response via : Initial Calibration
 Integrator: ChemStation 6890 Scale Mode: Small noise peaks clipped

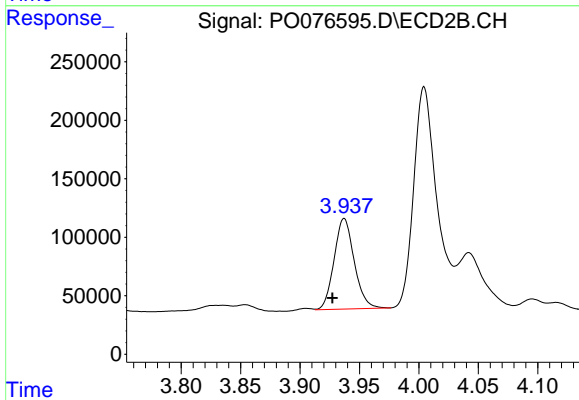
Volume Inj. : 2 µl
 Signal #1 Phase : ZB-MR1 Signal #2 Phase: ZB-MR2
 Signal #1 Info : 30Mx0.32mmx 0.50µ Signal #2 Info : 30M x 0.32mm x 0.25µm



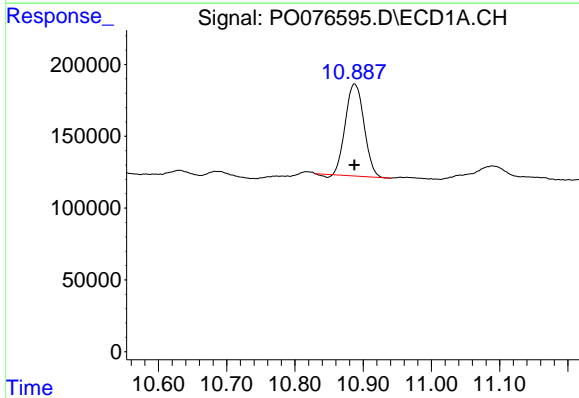


#1 Tetrachloro-m-xylene
 R.T.: 4.918 min
 Delta R.T.: 0.006 min
 Response: 1497126
 Conc: 17.09 ng/ml

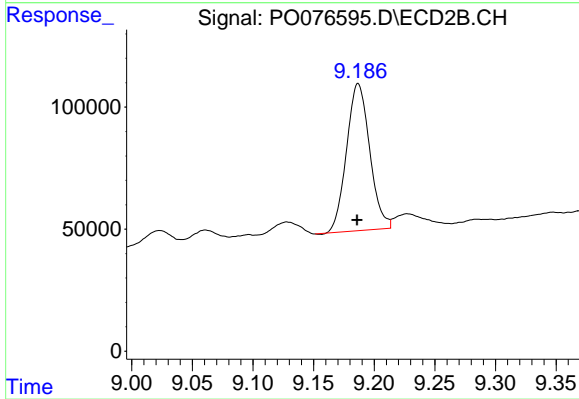
Instrument :
 ECD_O
 ClientSampled :
 BLACK-DRUM



#1 Tetrachloro-m-xylene
 R.T.: 3.937 min
 Delta R.T.: 0.010 min
 Response: 912386
 Conc: 16.63 ng/ml



#2 Decachlorobiphenyl
 R.T.: 10.887 min
 Delta R.T.: 0.000 min
 Response: 1213117
 Conc: 18.64 ng/ml



#2 Decachlorobiphenyl
 R.T.: 9.187 min
 Delta R.T.: 0.000 min
 Response: 800169
 Conc: 16.98 ng/ml