

Data Path : Z:\pestpcbsrv\HPCHEM1\ECD_0\Data\P0033022\
 Data File : P0085802.D
 Signal(s) : Signal #1: ECD1A.CH Signal #2: ECD2B.CH
 Acq On : 31 Mar 2022 5:19
 Operator : YP\AJ
 Sample : AR1248CCC500
 Misc :
 ALS Vial : 5 Sample Multiplier: 1

Instrument :
 ECD_0
 ClientSampleId :
 AR1248CCC500

Integration File signal 1: autoint1.e
 Integration File signal 2: autoint2.e
 Quant Time: Mar 31 06:18:27 2022
 Quant Method : Z:\pestpcbsrv\HPCHEM1\ECD_0\methods\P0032822.M
 Quant Title : GC EXTRACTABLES
 QLast Update : Wed Mar 30 16:55:12 2022
 Response via : Initial Calibration
 Integrator: ChemStation 6890 Scale Mode: Small noise peaks clipped

Volume Inj. : 2 µl
 Signal #1 Phase : ZB-MR1 Signal #2 Phase: ZB-MR2
 Signal #1 Info : 30Mx0.32mmx 0.50µ Signal #2 Info : 30M x 0.32mm x 0.25µm

Compound	RT#1	RT#2	Resp#1	Resp#2	ng/ml	ng/ml
System Monitoring Compounds						
1) SA Tetrachlo...	4.470	3.569	9851628	2320423	50.555	49.063
2) SA Decachlor...	10.379	8.593	6335553	1599286	49.374	45.550
Target Compounds						
3) L1 AR-1016-1	5.660	4.657	1903680	467679	285.070	261.053
4) L1 AR-1016-2	5.683	4.675	2242781	471344	221.876	185.864
5) L1 AR-1016-3	5.745	4.852	1113476	342987	183.650	246.605 #
6) L1 AR-1016-4	5.845	4.895	1243128	690392	254.636	589.131 #
7) L1 AR-1016-5	6.146	5.108	2901344	819554	638.291	605.024
8) L2 AR-1221-1	4.680	3.783	13895	7188	6.170	11.576 #
9) L2 AR-1221-2	4.781	3.868	152170	37890	82.163	80.218
10) L2 AR-1221-3	4.847	3.945	169716	46122	31.250	32.528
11) L3 AR-1232-1	4.847	3.945	169716	46122	33.230	33.198
12) L3 AR-1232-2	5.387	4.675	846460	471344	323.138	363.021
13) L3 AR-1232-3	5.683	4.852	2242781	342987	452.496	488.082
14) L3 AR-1232-4	5.845	4.936	1243128	723821	505.991	1109.335 #
15) L3 AR-1232-5	5.938	5.108	2639756	819554	1341.161	1082.659
16) L4 AR-1242-1	5.660	4.657	1903680	467679	353.562	331.334
17) L4 AR-1242-2	5.683	4.675	2242781	471344	276.252	241.769
18) L4 AR-1242-3	5.745	4.852	1113476	342987	222.030	320.356 #
19) L4 AR-1242-4	5.845	4.936	1243128	723821	314.294	667.202 #
20) L4 AR-1242-5	6.595	5.461	3123699	1170813	700.625	875.111
21) L5 AR-1248-1	5.660	4.657	1903680	467679	504.258	490.062
22) L5 AR-1248-2	5.938	4.895	2639756	690392	496.338	490.141
23) L5 AR-1248-3	6.146	4.936	2901344	723821	487.665	507.057
24) L5 AR-1248-4	6.527	5.108	2498317	819554	492.682	483.249
25) L5 AR-1248-5	6.595	5.501	3123699	834841	493.700	511.868
26) L6 AR-1254-1	6.527	5.461	2498317	1170813	359.363	452.658 #
27) L6 AR-1254-2	6.754	5.610	3060799	366578	285.776	159.089 #
28) L6 AR-1254-3	7.123	6.014	1714534	550061	153.367	151.802
29) L6 AR-1254-4	7.412	6.245	1095068	373707	137.433	166.552
30) L6 AR-1254-5	7.838	6.664	326932	113113	40.467	35.860
31) L7 AR-1260-1	7.292	6.158	182439	282862	22.777	113.280 #
32) L7 AR-1260-2	7.550	6.336	220253	60466	23.474	19.873
33) L7 AR-1260-3	7.900	6.487	138663	66171	19.653	24.109
34) L7 AR-1260-4	8.134	6.965	413909	7935	52.568	3.462 #
35) L7 AR-1260-5	8.479	7.209	107917	17071	7.025	3.376 #
36) L8 AR-1262-1	7.900	6.756	138663	3704	12.706	2.509 #
37) L8 AR-1262-2	8.479	6.965	107917	7935	5.690	2.728 #
38) L8 AR-1262-3	8.822	7.495	68029	6190	5.992	1.207 #
39) L8 AR-1262-4	8.876	7.556	9335	16883	1.712	3.335 #
40) L8 AR-1262-5	9.584	0.000	17030	0	2.740	N.D. #
41) L9 AR-1268-1	8.822f	7.495	68029	6190	3.316	0.622 #

Data Path : Z:\pestpcbsrv\HPCHEM1\ECD_0\Data\P0033022\
 Data File : P0085802.D
 Signal(s) : Signal #1: ECD1A.CH Signal #2: ECD2B.CH
 Acq On : 31 Mar 2022 5:19
 Operator : YP\AJ
 Sample : AR1248CCC500
 Misc :
 ALS Vial : 5 Sample Multiplier: 1

Instrument :
 ECD_0
 ClientSampleId :
 AR1248CCC500

Integration File signal 1: autoint1.e
 Integration File signal 2: autoint2.e
 Quant Time: Mar 31 06:18:27 2022
 Quant Method : Z:\pestpcbsrv\HPCHEM1\ECD_0\methods\P0032822.M
 Quant Title : GC EXTRACTABLES
 QLast Update : Wed Mar 30 16:55:12 2022
 Response via : Initial Calibration
 Integrator: ChemStation 6890 Scale Mode: Small noise peaks clipped

Volume Inj. : 2 µl
 Signal #1 Phase : ZB-MR1 Signal #2 Phase: ZB-MR2
 Signal #1 Info : 30Mx0.32mmx 0.50µ Signal #2 Info : 30M x 0.32mm x 0.25µm

	Compound	RT#1	RT#2	Resp#1	Resp#2	ng/ml	ng/ml
42)	L9 AR-1268-2	8.876	7.556	9335	16883	0.461	2.435 #
43)	L9 AR-1268-3	9.143	0.000	18256	0	1.113	N.D. #
44)	L9 AR-1268-4	9.584	0.000	17030	0	2.422	N.D. #
45)	L9 AR-1268-5	9.971	8.343	6774	13444	0.120	0.997 #

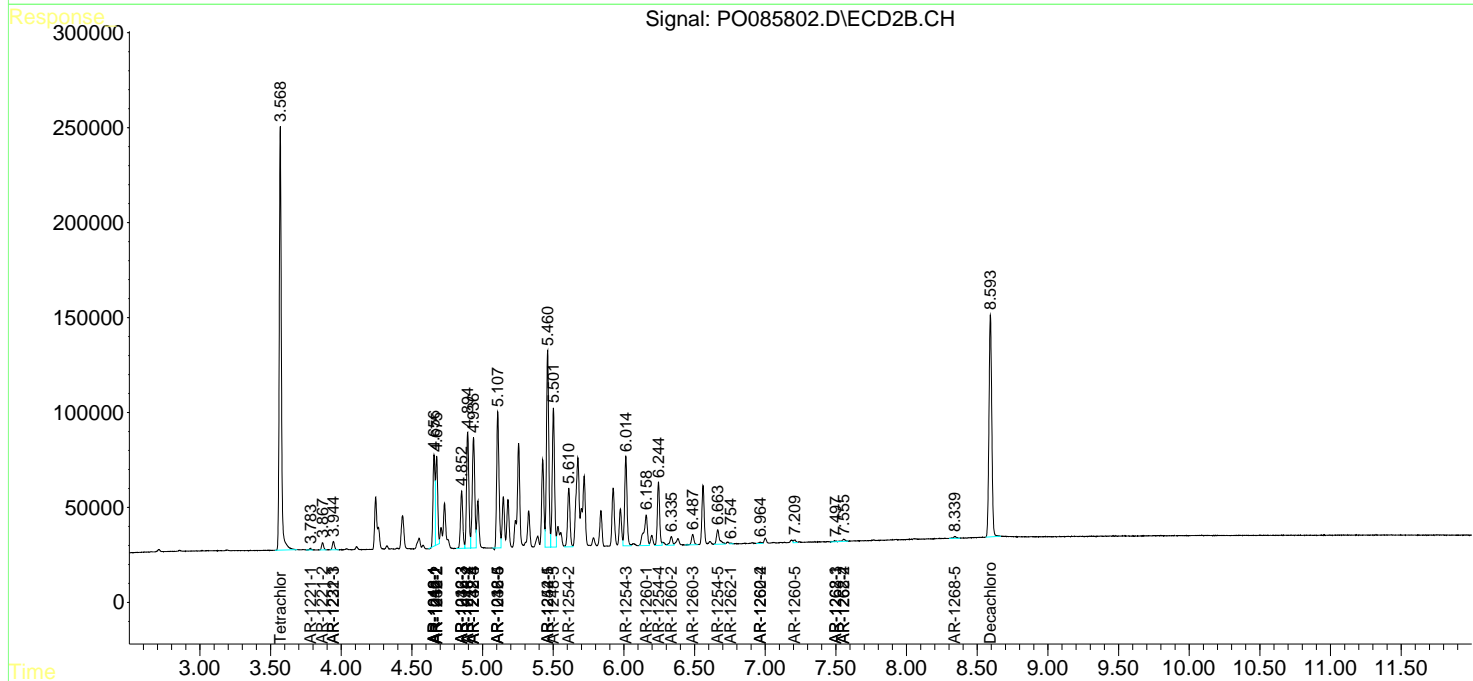
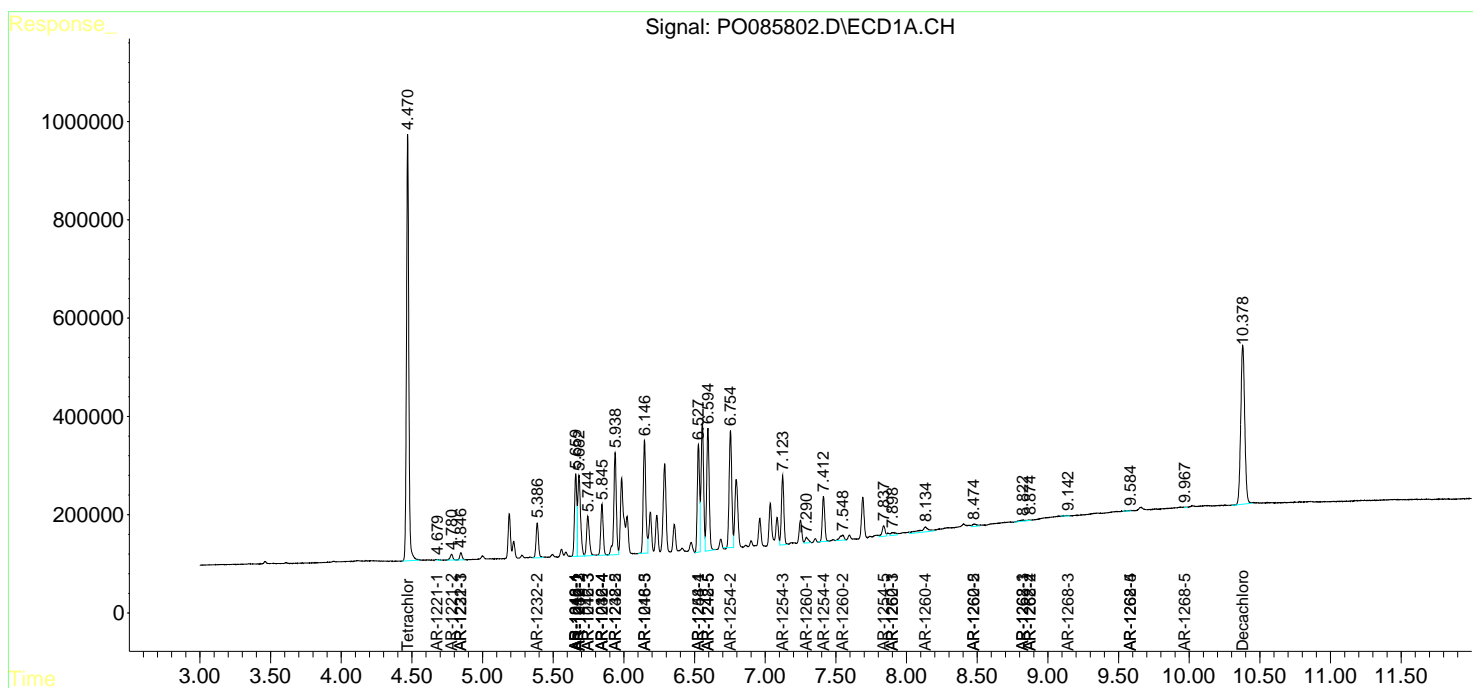
(f)=RT Delta > 1/2 Window (#)=Amounts differ by > 25% (m)=manual int.

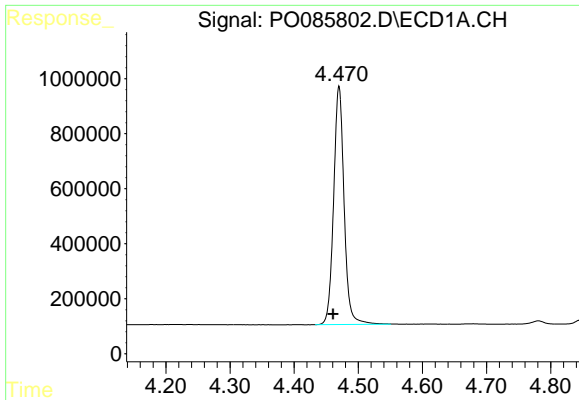
Data Path : Z:\pestpcbsrv\HPCHEM1\ECD_O\Data\P0033022\
 Data File : P0085802.D
 Signal(s) : Signal #1: ECD1A.CH Signal #2: ECD2B.CH
 Acq On : 31 Mar 2022 5:19
 Operator : YP\AJ
 Sample : AR1248CCC500
 Misc :
 ALS Vial : 5 Sample Multiplier: 1

Instrument :
 ECD_O
 ClientSampleId :
 AR1248CCC500

Integration File signal 1: autoint1.e
 Integration File signal 2: autoint2.e
 Quant Time: Mar 31 06:18:27 2022
 Quant Method : Z:\pestpcbsrv\HPCHEM1\ECD_O\methods\P0032822.M
 Quant Title : GC EXTRACTABLES
 QLast Update : Wed Mar 30 16:55:12 2022
 Response via : Initial Calibration
 Integrator: ChemStation 6890 Scale Mode: Small noise peaks clipped

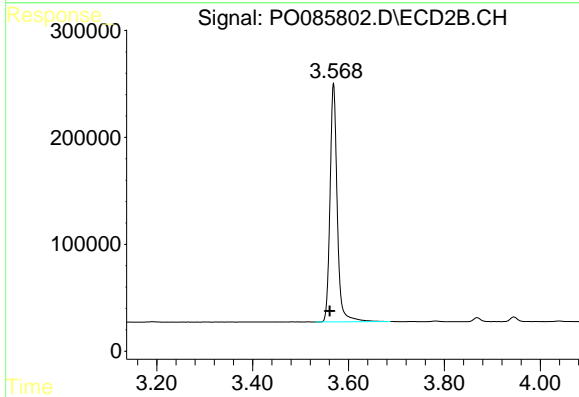
Volume Inj. : 2 µl
 Signal #1 Phase : ZB-MR1 Signal #2 Phase: ZB-MR2
 Signal #1 Info : 30Mx0.32mmx 0.50µ Signal #2 Info : 30M x 0.32mm x 0.25µm



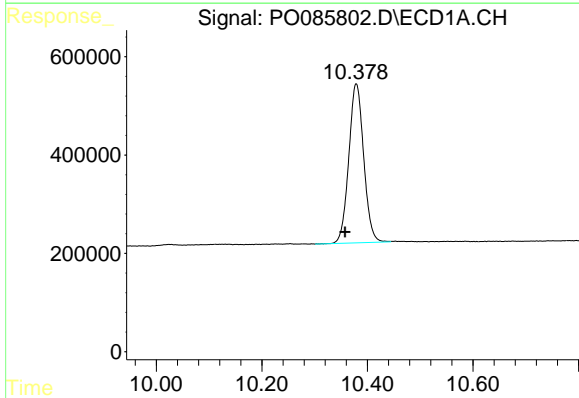


#1 Tetrachloro-m-xylene
 R.T.: 4.470 min
 Delta R.T.: 0.009 min
 Response: 9851628
 Conc: 50.55 ng/ml

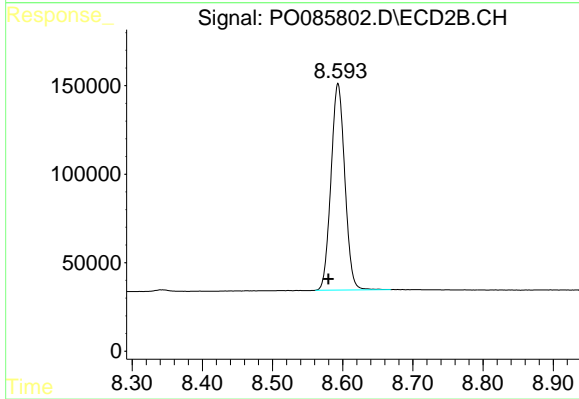
Instrument :
 ECD_O
 ClientSampleId :
 AR1248CCC500



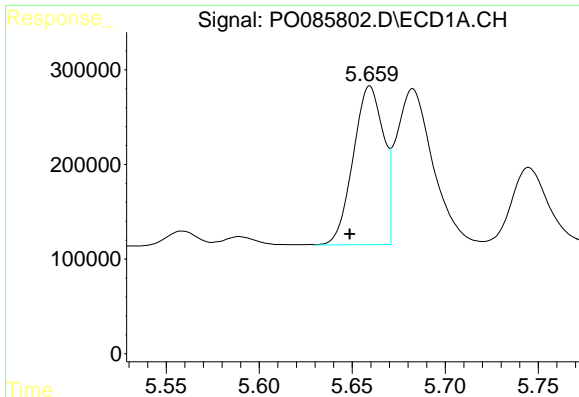
#1 Tetrachloro-m-xylene
 R.T.: 3.569 min
 Delta R.T.: 0.008 min
 Response: 2320423
 Conc: 49.06 ng/ml



#2 Decachlorobiphenyl
 R.T.: 10.379 min
 Delta R.T.: 0.021 min
 Response: 6335553
 Conc: 49.37 ng/ml



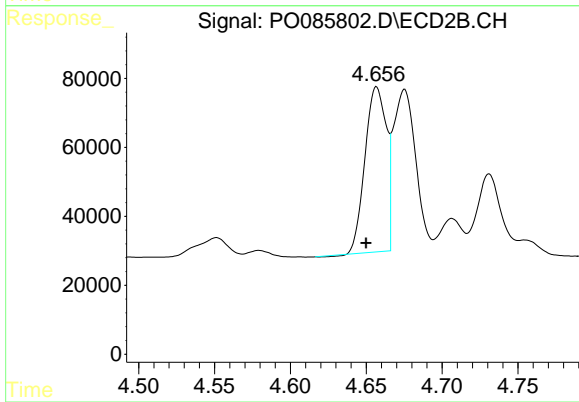
#2 Decachlorobiphenyl
 R.T.: 8.593 min
 Delta R.T.: 0.014 min
 Response: 1599286
 Conc: 45.55 ng/ml



#3 AR-1016-1

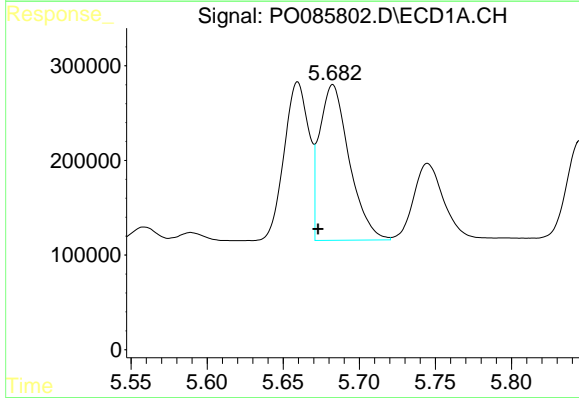
R.T.: 5.660 min
 Delta R.T.: 0.011 min
 Response: 1903680
 Conc: 285.07 ng/ml

Instrument :
 ECD_O
 ClientSampleId :
 AR1248CCC500



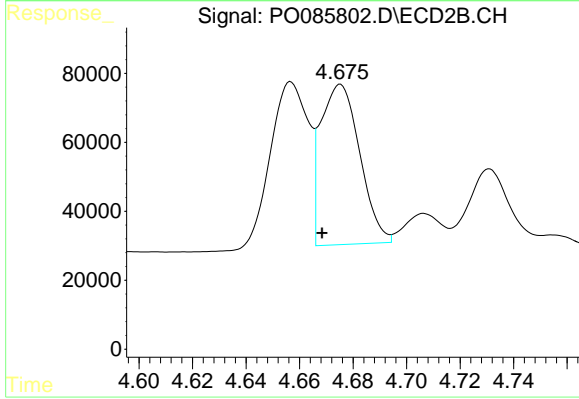
#3 AR-1016-1

R.T.: 4.657 min
 Delta R.T.: 0.007 min
 Response: 467679
 Conc: 261.05 ng/ml



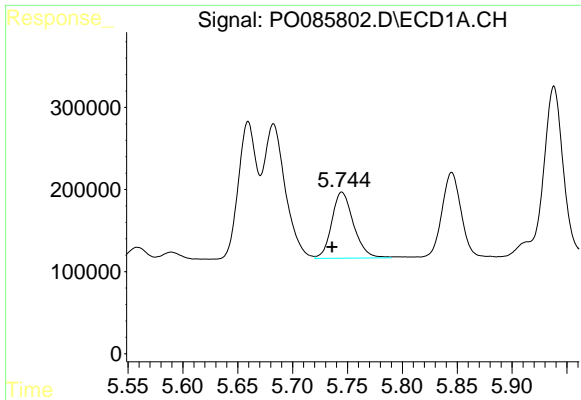
#4 AR-1016-2

R.T.: 5.683 min
 Delta R.T.: 0.010 min
 Response: 2242781
 Conc: 221.88 ng/ml



#4 AR-1016-2

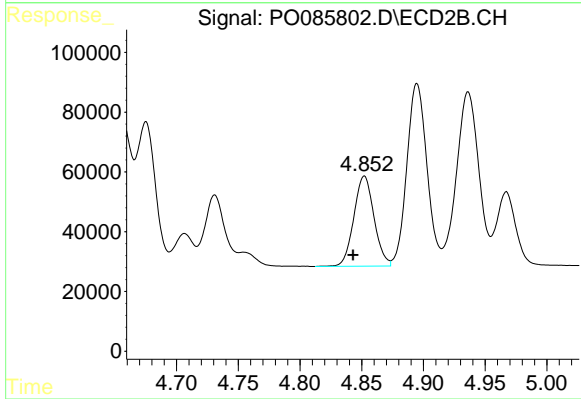
R.T.: 4.675 min
 Delta R.T.: 0.007 min
 Response: 471344
 Conc: 185.86 ng/ml



#5 AR-1016-3

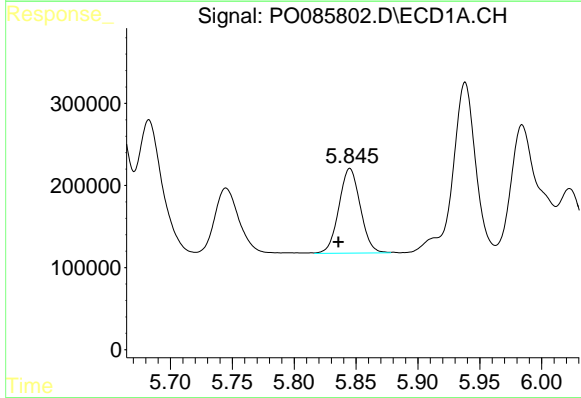
R.T.: 5.745 min
 Delta R.T.: 0.009 min
 Response: 1113476
 Conc: 183.65 ng/ml

Instrument :
 ECD_O
 ClientSampleId :
 AR1248CCC500



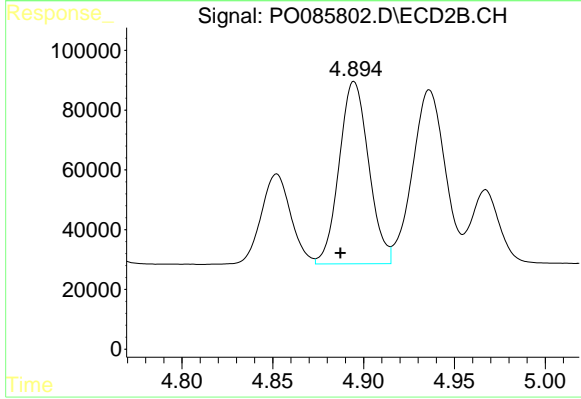
#5 AR-1016-3

R.T.: 4.852 min
 Delta R.T.: 0.009 min
 Response: 342987
 Conc: 246.61 ng/ml



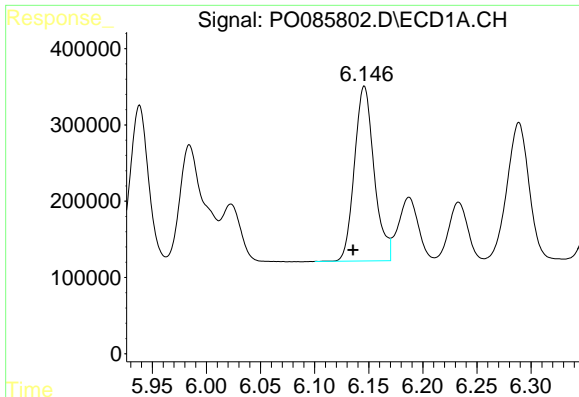
#6 AR-1016-4

R.T.: 5.845 min
 Delta R.T.: 0.009 min
 Response: 1243128
 Conc: 254.64 ng/ml



#6 AR-1016-4

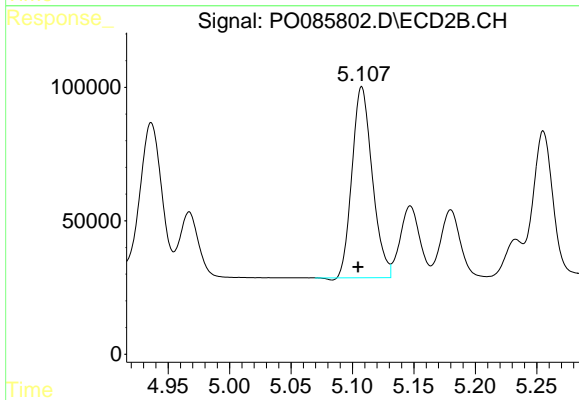
R.T.: 4.895 min
 Delta R.T.: 0.008 min
 Response: 690392
 Conc: 589.13 ng/ml



#7 AR-1016-5

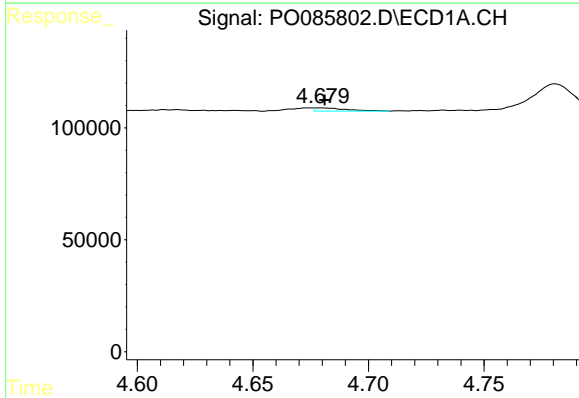
R.T.: 6.146 min
 Delta R.T.: 0.010 min
 Response: 2901344
 Conc: 638.29 ng/ml

Instrument :
 ECD_O
 ClientSampleId :
 AR1248CCC500



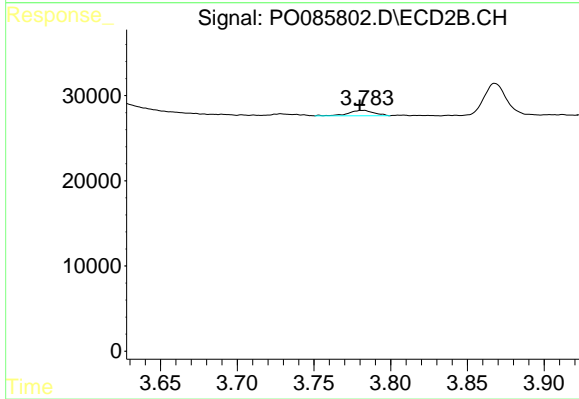
#7 AR-1016-5

R.T.: 5.108 min
 Delta R.T.: 0.003 min
 Response: 819554
 Conc: 605.02 ng/ml



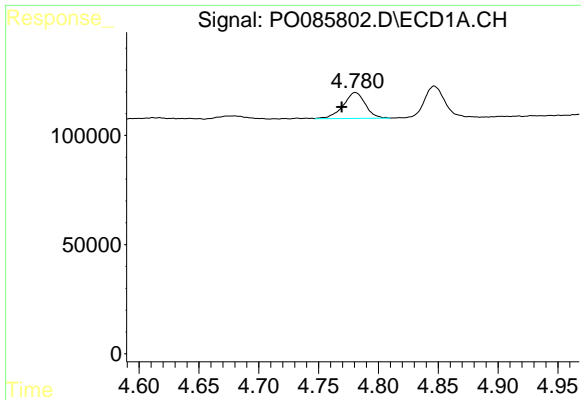
#8 AR-1221-1

R.T.: 4.680 min
 Delta R.T.: -0.001 min
 Response: 13895
 Conc: 6.17 ng/ml



#8 AR-1221-1

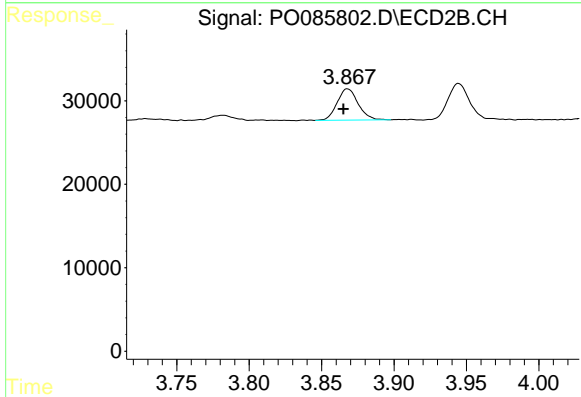
R.T.: 3.783 min
 Delta R.T.: 0.003 min
 Response: 7188
 Conc: 11.58 ng/ml



#9 AR-1221-2

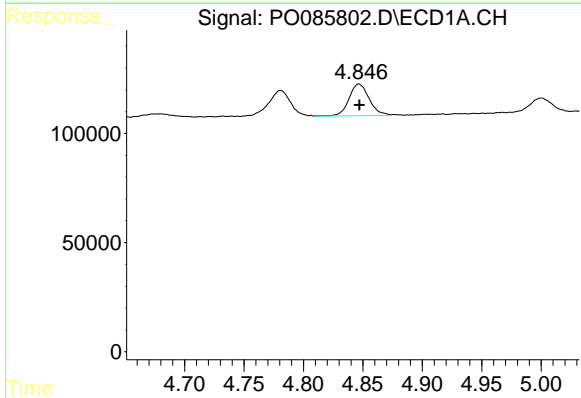
R.T.: 4.781 min
 Delta R.T.: 0.011 min
 Response: 152170
 Conc: 82.16 ng/ml

Instrument :
 ECD_O
 ClientSampleId :
 AR1248CCC500



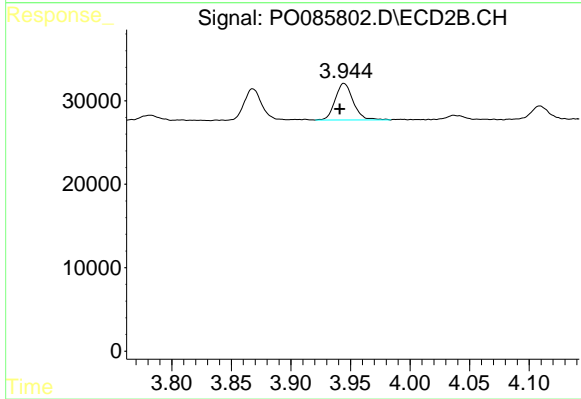
#9 AR-1221-2

R.T.: 3.868 min
 Delta R.T.: 0.003 min
 Response: 37890
 Conc: 80.22 ng/ml



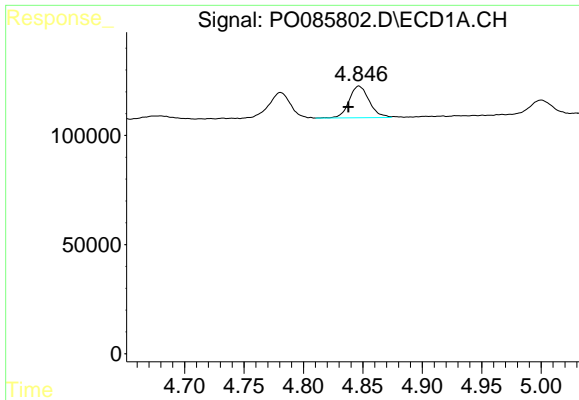
#10 AR-1221-3

R.T.: 4.847 min
 Delta R.T.: 0.000 min
 Response: 169716
 Conc: 31.25 ng/ml



#10 AR-1221-3

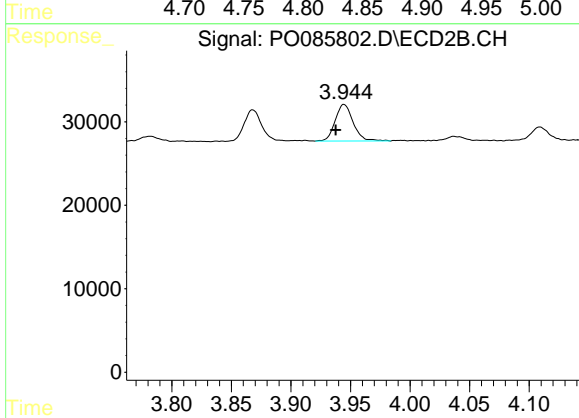
R.T.: 3.945 min
 Delta R.T.: 0.004 min
 Response: 46122
 Conc: 32.53 ng/ml



#11 AR-1232-1

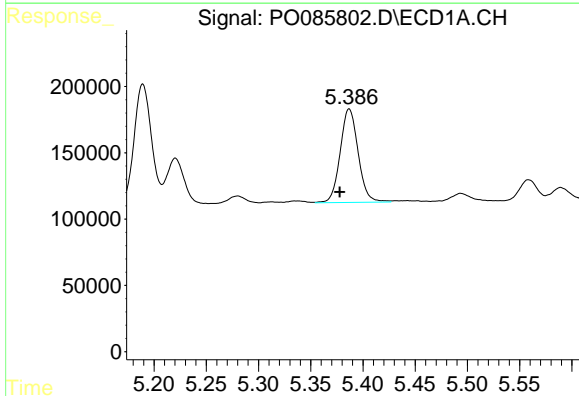
R.T.: 4.847 min
 Delta R.T.: 0.009 min
 Response: 169716
 Conc: 33.23 ng/ml

Instrument :
 ECD_O
 ClientSampleId :
 AR1248CCC500



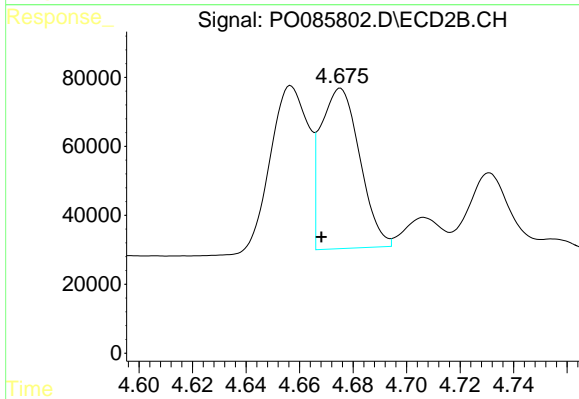
#11 AR-1232-1

R.T.: 3.945 min
 Delta R.T.: 0.007 min
 Response: 46122
 Conc: 33.20 ng/ml



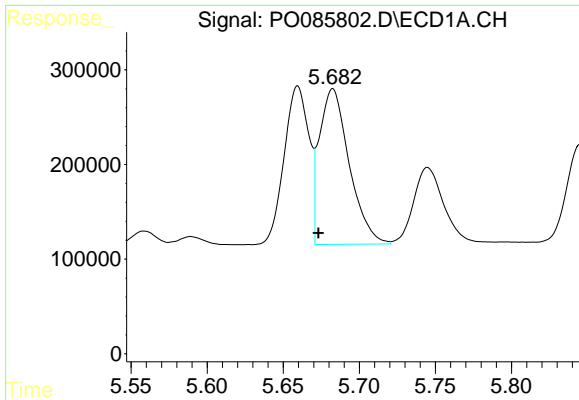
#12 AR-1232-2

R.T.: 5.387 min
 Delta R.T.: 0.009 min
 Response: 846460
 Conc: 323.14 ng/ml



#12 AR-1232-2

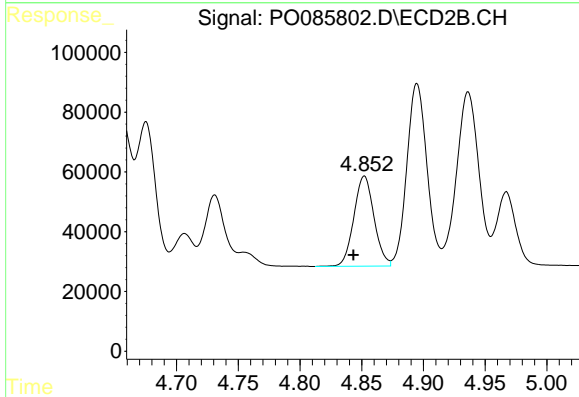
R.T.: 4.675 min
 Delta R.T.: 0.007 min
 Response: 471344
 Conc: 363.02 ng/ml



#13 AR-1232-3

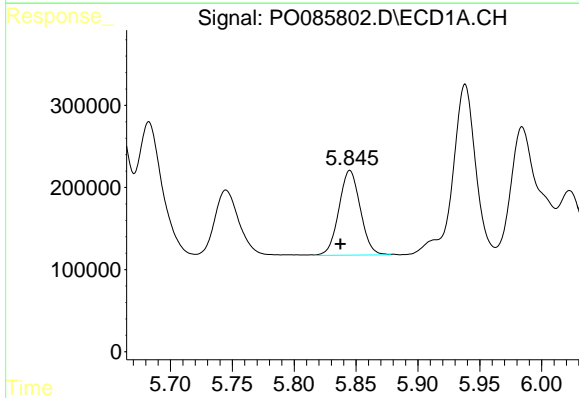
R.T.: 5.683 min
 Delta R.T.: 0.010 min
 Response: 2242781
 Conc: 452.50 ng/ml

Instrument :
 ECD_O
 ClientSampleId :
 AR1248CCC500



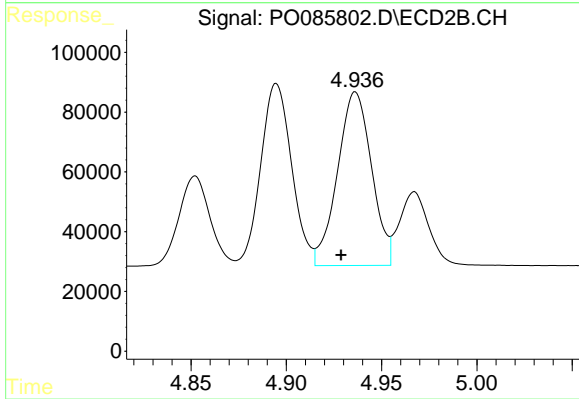
#13 AR-1232-3

R.T.: 4.852 min
 Delta R.T.: 0.009 min
 Response: 342987
 Conc: 488.08 ng/ml



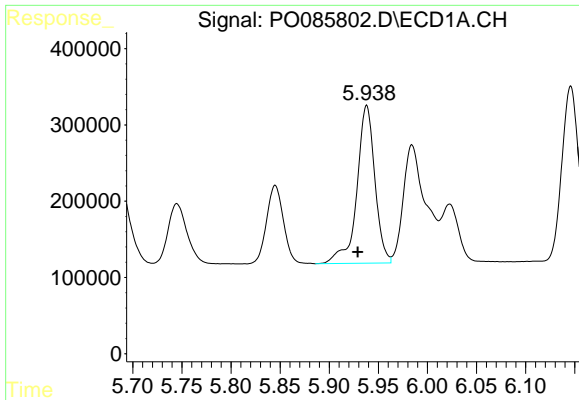
#14 AR-1232-4

R.T.: 5.845 min
 Delta R.T.: 0.008 min
 Response: 1243128
 Conc: 505.99 ng/ml



#14 AR-1232-4

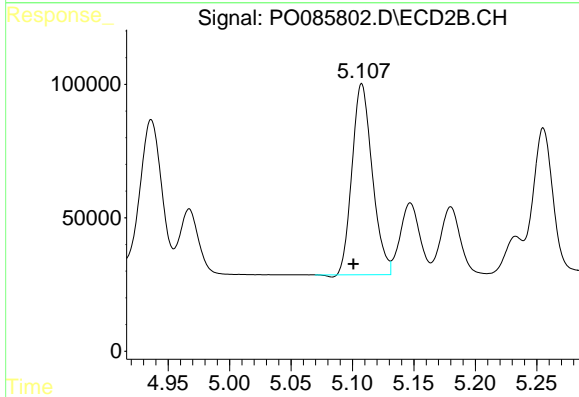
R.T.: 4.936 min
 Delta R.T.: 0.008 min
 Response: 723821
 Conc: 1109.34 ng/ml



#15 AR-1232-5

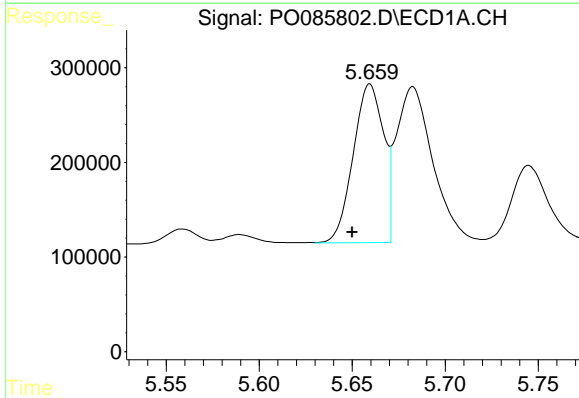
R.T.: 5.938 min
 Delta R.T.: 0.009 min
 Response: 2639756
 Conc: 1341.16 ng/ml

Instrument :
 ECD_O
 ClientSampleId :
 AR1248CCC500



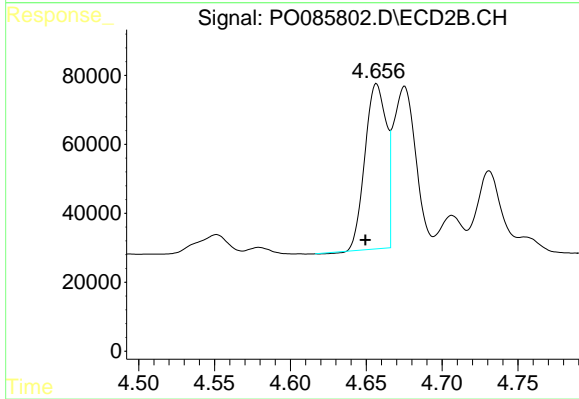
#15 AR-1232-5

R.T.: 5.108 min
 Delta R.T.: 0.007 min
 Response: 819554
 Conc: 1082.66 ng/ml



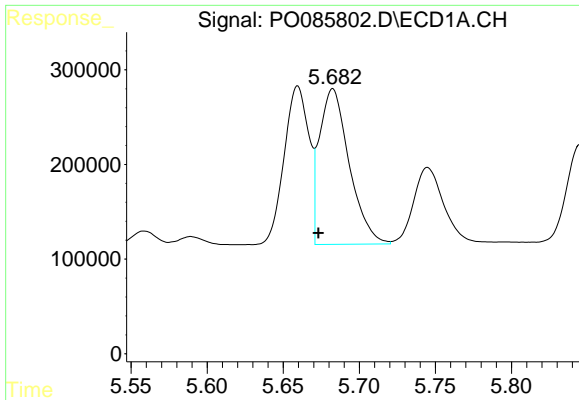
#16 AR-1242-1

R.T.: 5.660 min
 Delta R.T.: 0.010 min
 Response: 1903680
 Conc: 353.56 ng/ml



#16 AR-1242-1

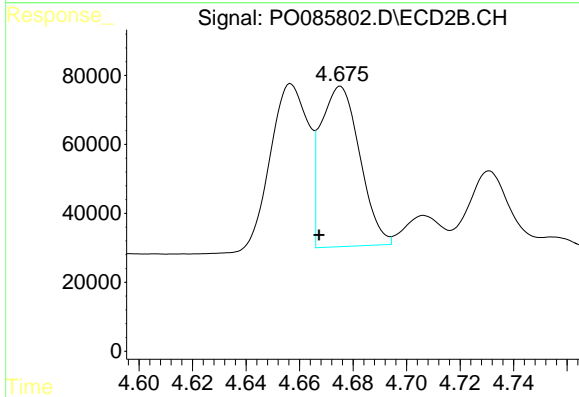
R.T.: 4.657 min
 Delta R.T.: 0.007 min
 Response: 467679
 Conc: 331.33 ng/ml



#17 AR-1242-2

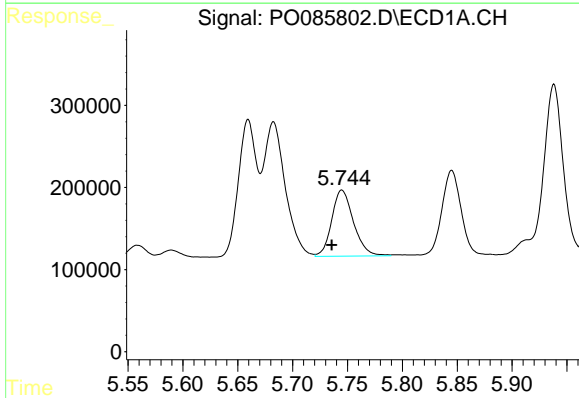
R.T.: 5.683 min
 Delta R.T.: 0.010 min
 Response: 2242781
 Conc: 276.25 ng/ml

Instrument :
 ECD_O
 ClientSampleId :
 AR1248CCC500



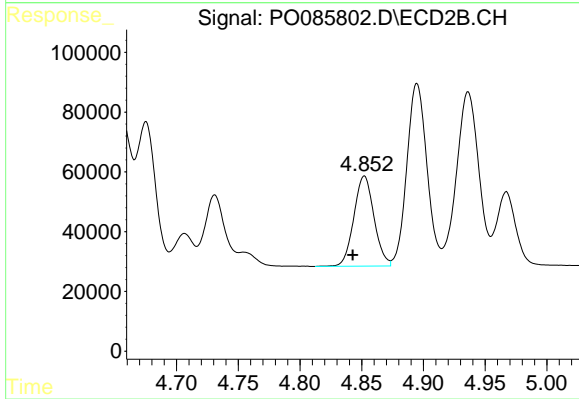
#17 AR-1242-2

R.T.: 4.675 min
 Delta R.T.: 0.008 min
 Response: 471344
 Conc: 241.77 ng/ml



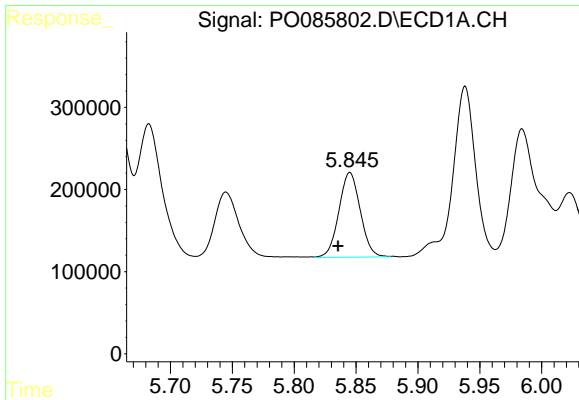
#18 AR-1242-3

R.T.: 5.745 min
 Delta R.T.: 0.009 min
 Response: 1113476
 Conc: 222.03 ng/ml



#18 AR-1242-3

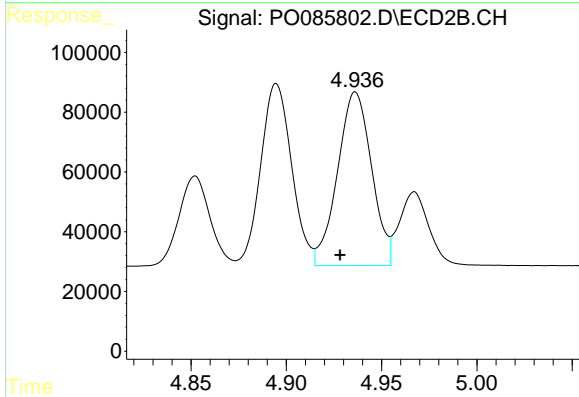
R.T.: 4.852 min
 Delta R.T.: 0.009 min
 Response: 342987
 Conc: 320.36 ng/ml



#19 AR-1242-4

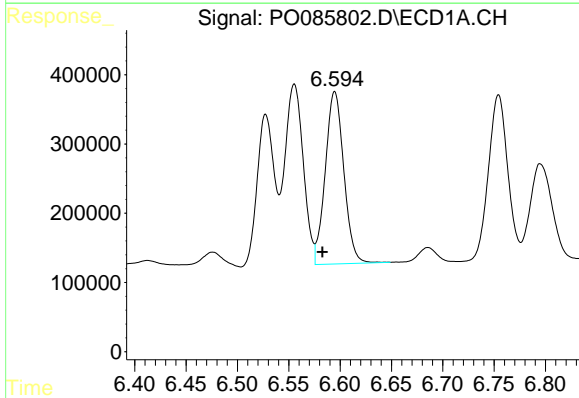
R.T.: 5.845 min
 Delta R.T.: 0.010 min
 Response: 1243128
 Conc: 314.29 ng/ml

Instrument :
 ECD_O
 ClientSampleId :
 AR1248CCC500



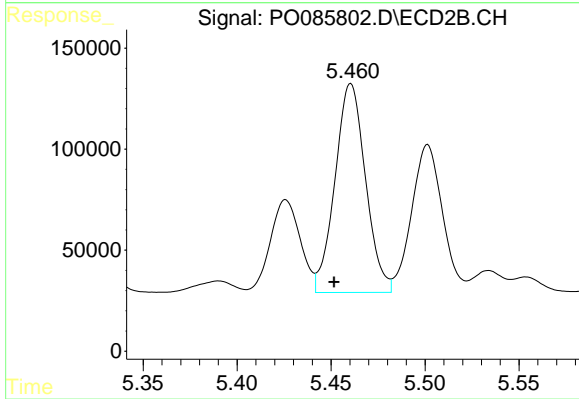
#19 AR-1242-4

R.T.: 4.936 min
 Delta R.T.: 0.008 min
 Response: 723821
 Conc: 667.20 ng/ml



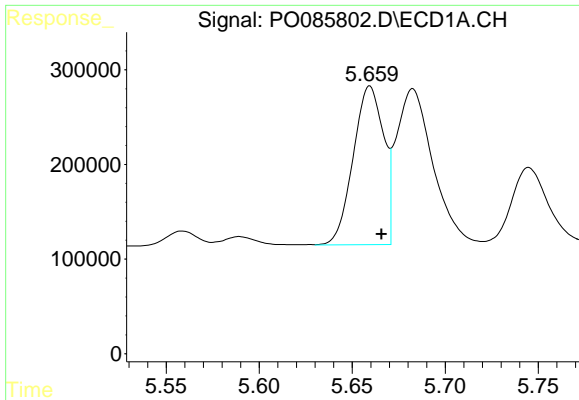
#20 AR-1242-5

R.T.: 6.595 min
 Delta R.T.: 0.012 min
 Response: 3123699
 Conc: 700.62 ng/ml



#20 AR-1242-5

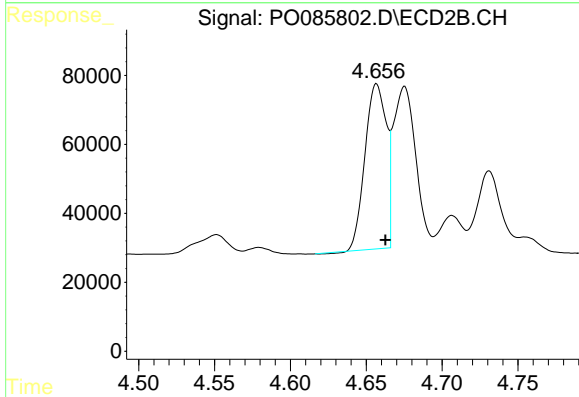
R.T.: 5.461 min
 Delta R.T.: 0.009 min
 Response: 1170813
 Conc: 875.11 ng/ml



#21 AR-1248-1

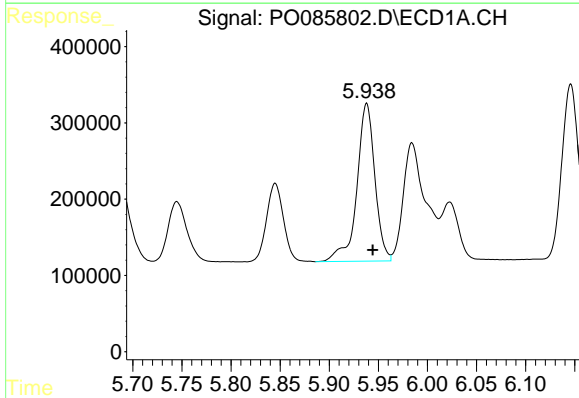
R.T.: 5.660 min
 Delta R.T.: -0.006 min
 Response: 1903680
 Conc: 504.26 ng/ml

Instrument :
 ECD_O
 ClientSampleId :
 AR1248CCC500



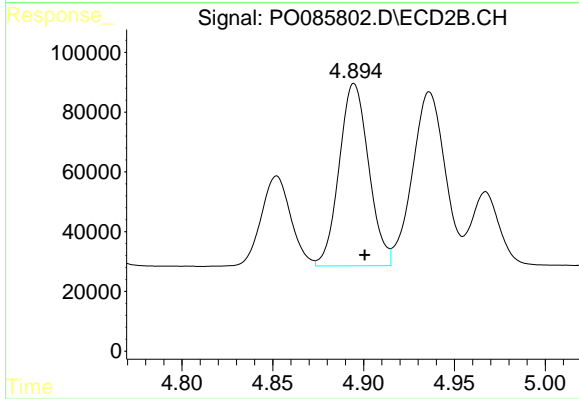
#21 AR-1248-1

R.T.: 4.657 min
 Delta R.T.: -0.006 min
 Response: 467679
 Conc: 490.06 ng/ml



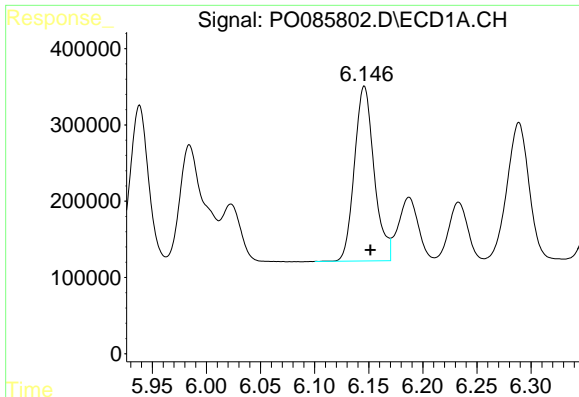
#22 AR-1248-2

R.T.: 5.938 min
 Delta R.T.: -0.006 min
 Response: 2639756
 Conc: 496.34 ng/ml



#22 AR-1248-2

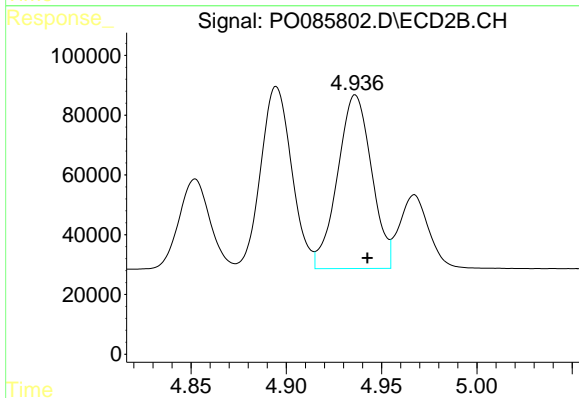
R.T.: 4.895 min
 Delta R.T.: -0.006 min
 Response: 690392
 Conc: 490.14 ng/ml



#23 AR-1248-3

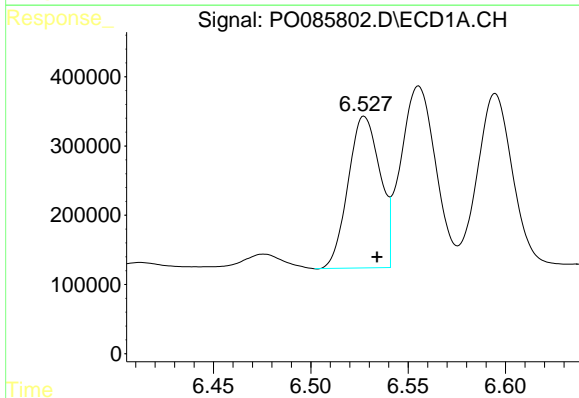
R.T.: 6.146 min
 Delta R.T.: -0.006 min
 Response: 2901344
 Conc: 487.67 ng/ml

Instrument :
 ECD_O
 ClientSampleId :
 AR1248CCC500



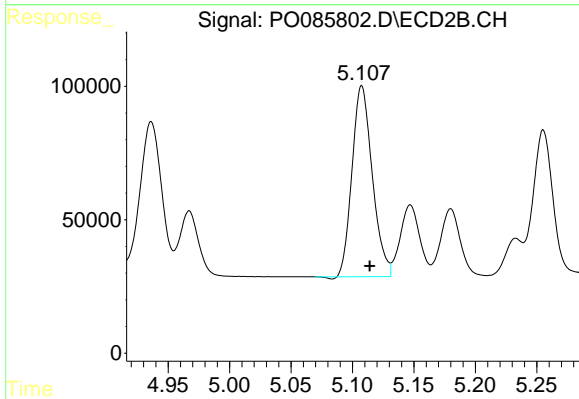
#23 AR-1248-3

R.T.: 4.936 min
 Delta R.T.: -0.006 min
 Response: 723821
 Conc: 507.06 ng/ml



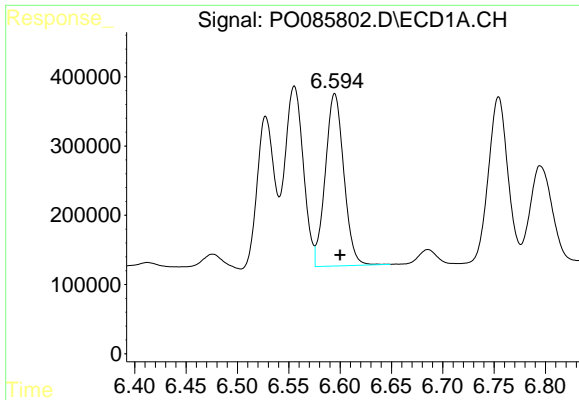
#24 AR-1248-4

R.T.: 6.527 min
 Delta R.T.: -0.007 min
 Response: 2498317
 Conc: 492.68 ng/ml



#24 AR-1248-4

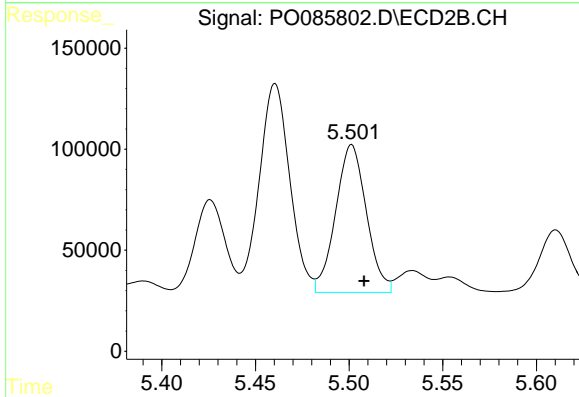
R.T.: 5.108 min
 Delta R.T.: -0.006 min
 Response: 819554
 Conc: 483.25 ng/ml



#25 AR-1248-5

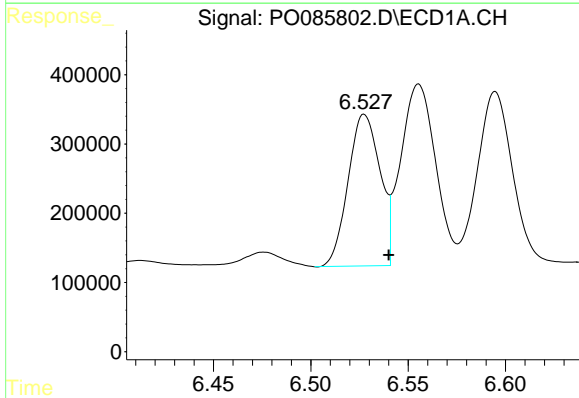
R.T.: 6.595 min
 Delta R.T.: -0.005 min
 Response: 3123699
 Conc: 493.70 ng/ml

Instrument :
 ECD_O
 ClientSampleId :
 AR1248CCC500



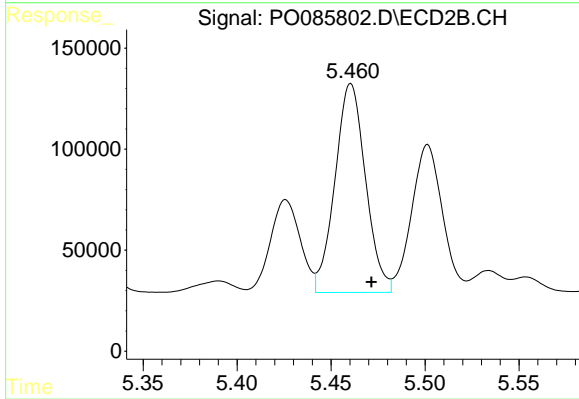
#25 AR-1248-5

R.T.: 5.501 min
 Delta R.T.: -0.007 min
 Response: 834841
 Conc: 511.87 ng/ml



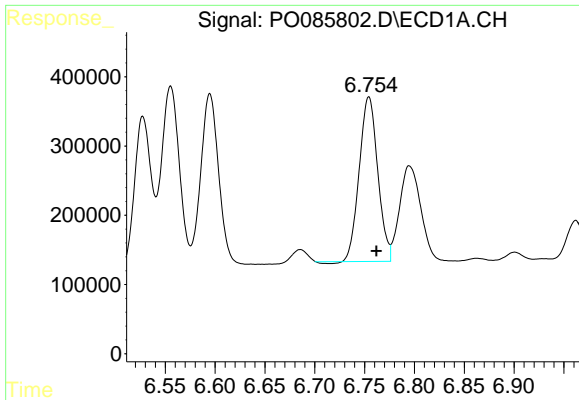
#26 AR-1254-1

R.T.: 6.527 min
 Delta R.T.: -0.013 min
 Response: 2498317
 Conc: 359.36 ng/ml



#26 AR-1254-1

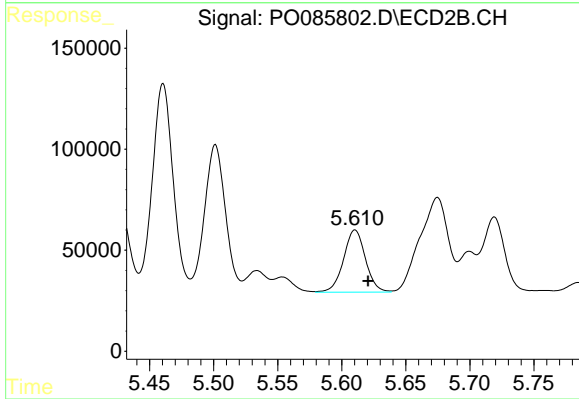
R.T.: 5.461 min
 Delta R.T.: -0.011 min
 Response: 1170813
 Conc: 452.66 ng/ml



#27 AR-1254-2

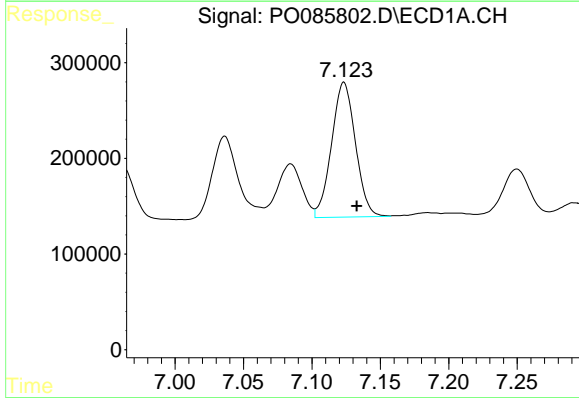
R.T.: 6.754 min
 Delta R.T.: -0.008 min
 Response: 3060799
 Conc: 285.78 ng/ml

Instrument :
 ECD_O
 ClientSampleId :
 AR1248CCC500



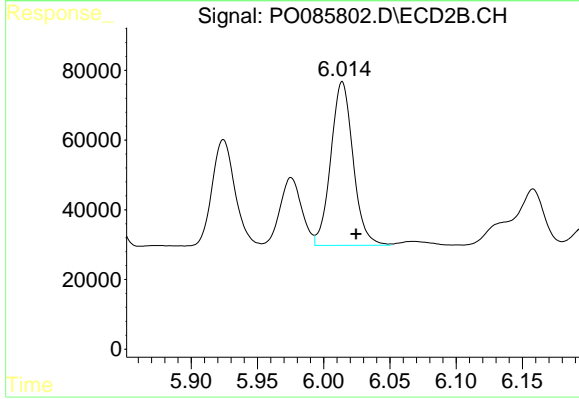
#27 AR-1254-2

R.T.: 5.610 min
 Delta R.T.: -0.010 min
 Response: 366578
 Conc: 159.09 ng/ml



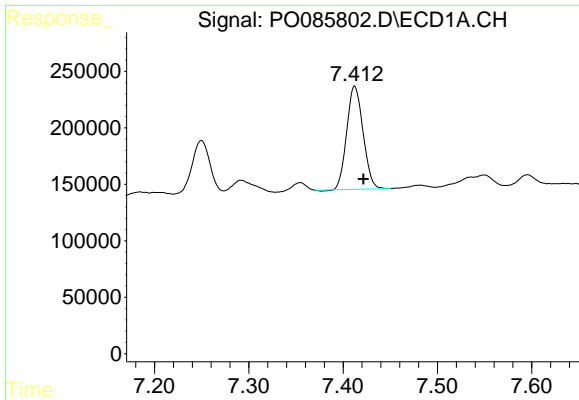
#28 AR-1254-3

R.T.: 7.123 min
 Delta R.T.: -0.009 min
 Response: 1714534
 Conc: 153.37 ng/ml



#28 AR-1254-3

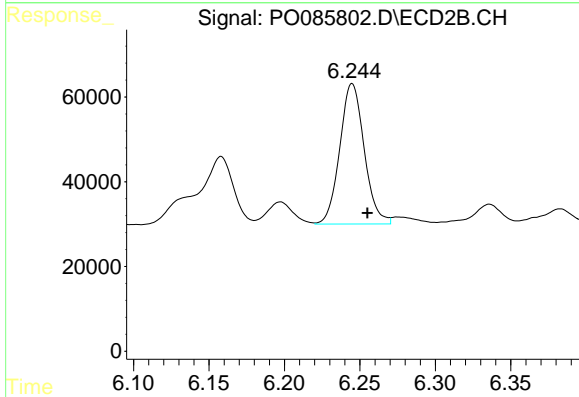
R.T.: 6.014 min
 Delta R.T.: -0.010 min
 Response: 550061
 Conc: 151.80 ng/ml



#29 AR-1254-4

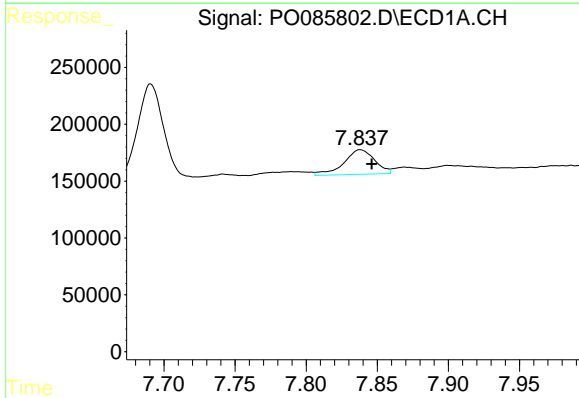
R.T.: 7.412 min
 Delta R.T.: -0.009 min
 Response: 1095068
 Conc: 137.43 ng/ml

Instrument :
 ECD_O
 ClientSampleId :
 AR1248CCC500



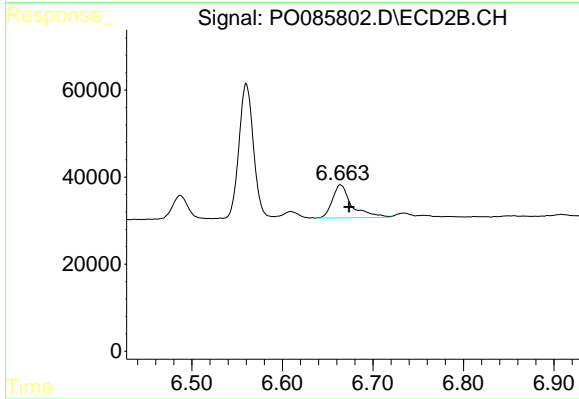
#29 AR-1254-4

R.T.: 6.245 min
 Delta R.T.: -0.010 min
 Response: 373707
 Conc: 166.55 ng/ml



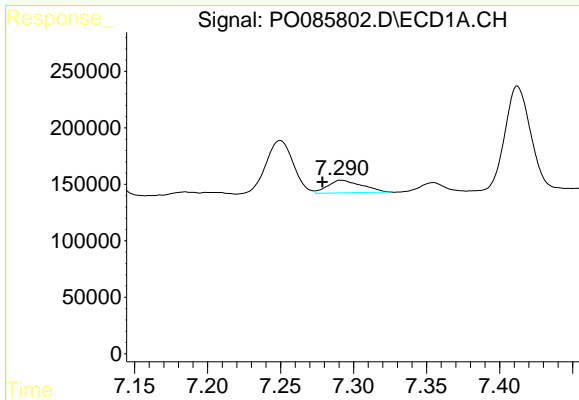
#30 AR-1254-5

R.T.: 7.838 min
 Delta R.T.: -0.008 min
 Response: 326932
 Conc: 40.47 ng/ml



#30 AR-1254-5

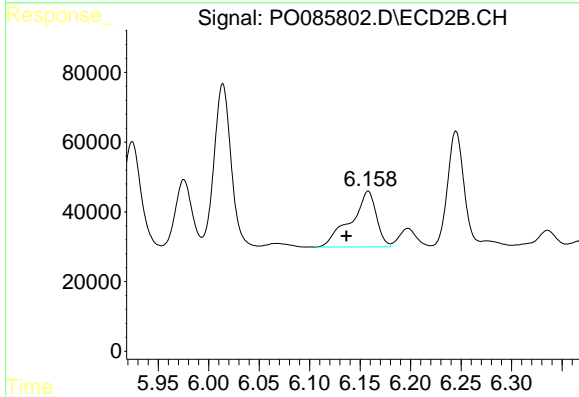
R.T.: 6.664 min
 Delta R.T.: -0.010 min
 Response: 113113
 Conc: 35.86 ng/ml



#31 AR-1260-1

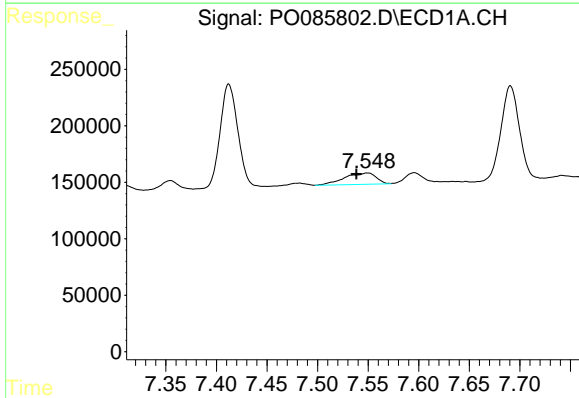
R.T.: 7.292 min
 Delta R.T.: 0.013 min
 Response: 182439
 Conc: 22.78 ng/ml

Instrument :
 ECD_O
 ClientSampleId :
 AR1248CCC500



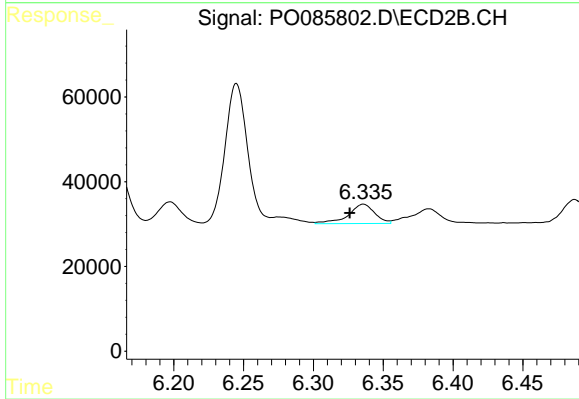
#31 AR-1260-1

R.T.: 6.158 min
 Delta R.T.: 0.021 min
 Response: 282862
 Conc: 113.28 ng/ml



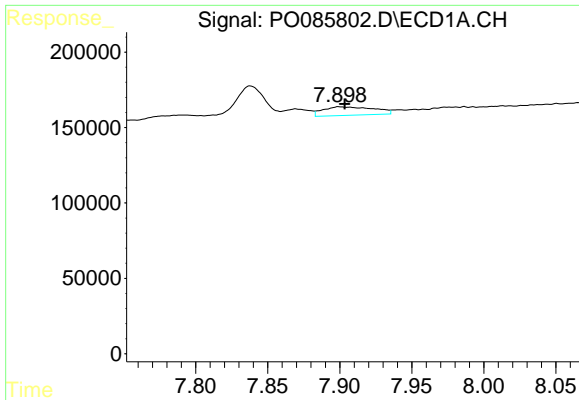
#32 AR-1260-2

R.T.: 7.550 min
 Delta R.T.: 0.011 min
 Response: 220253
 Conc: 23.47 ng/ml



#32 AR-1260-2

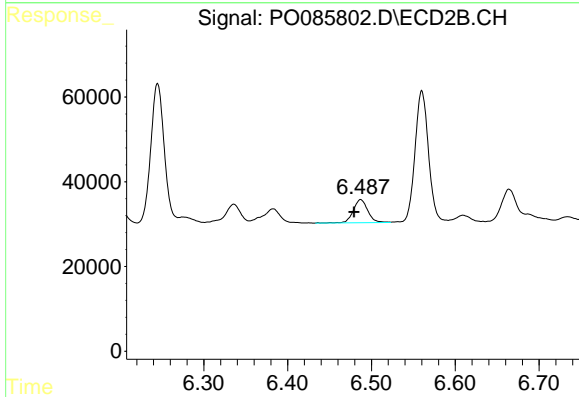
R.T.: 6.336 min
 Delta R.T.: 0.010 min
 Response: 60466
 Conc: 19.87 ng/ml



#33 AR-1260-3

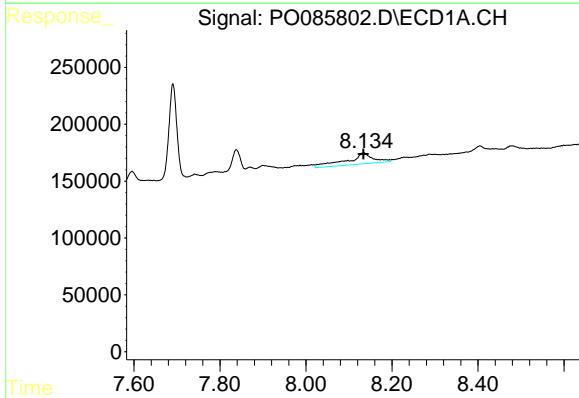
R.T.: 7.900 min
 Delta R.T.: -0.004 min
 Response: 138663
 Conc: 19.65 ng/ml

Instrument :
 ECD_O
 ClientSampleId :
 AR1248CCC500



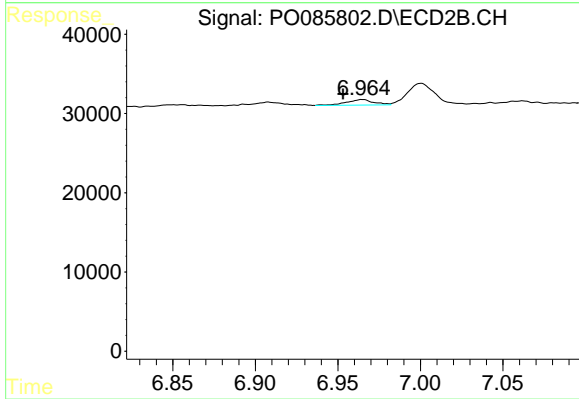
#33 AR-1260-3

R.T.: 6.487 min
 Delta R.T.: 0.008 min
 Response: 66171
 Conc: 24.11 ng/ml



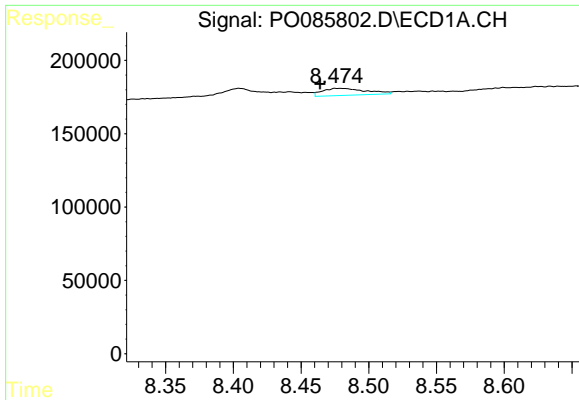
#34 AR-1260-4

R.T.: 8.134 min
 Delta R.T.: 0.001 min
 Response: 413909
 Conc: 52.57 ng/ml



#34 AR-1260-4

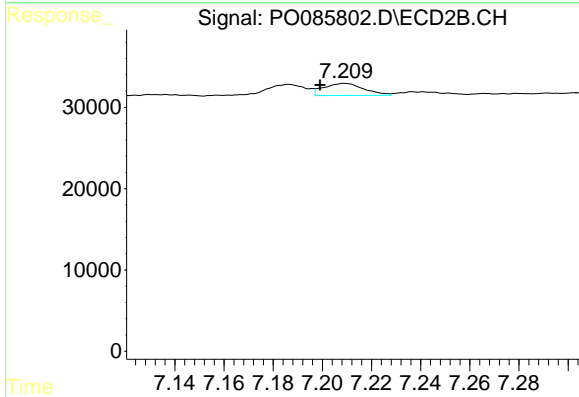
R.T.: 6.965 min
 Delta R.T.: 0.012 min
 Response: 7935
 Conc: 3.46 ng/ml



#35 AR-1260-5

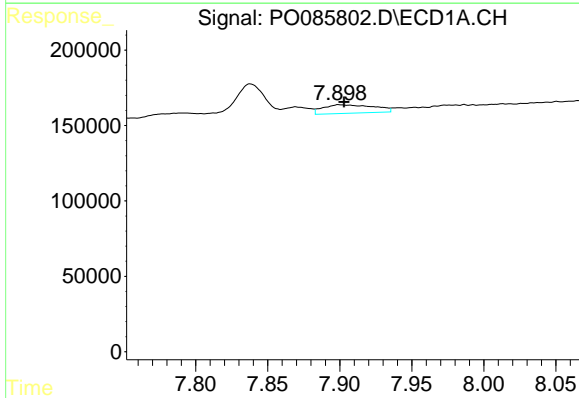
R.T.: 8.479 min
 Delta R.T.: 0.015 min
 Response: 107917
 Conc: 7.02 ng/ml

Instrument :
 ECD_O
 ClientSampleId :
 AR1248CCC500



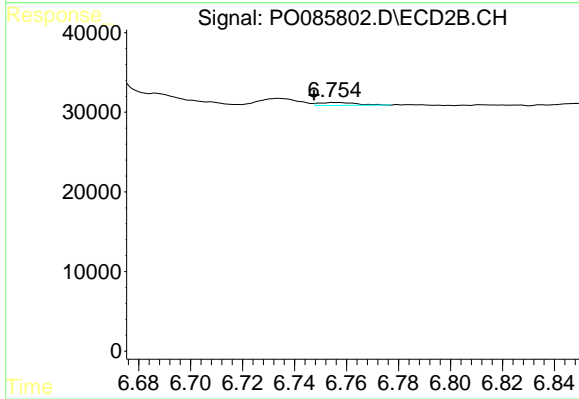
#35 AR-1260-5

R.T.: 7.209 min
 Delta R.T.: 0.010 min
 Response: 17071
 Conc: 3.38 ng/ml



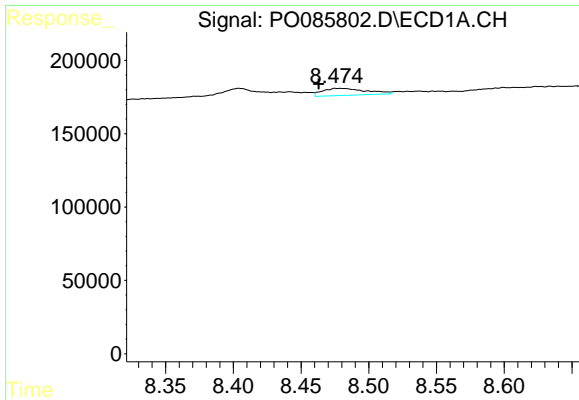
#36 AR-1262-1

R.T.: 7.900 min
 Delta R.T.: -0.003 min
 Response: 138663
 Conc: 12.71 ng/ml



#36 AR-1262-1

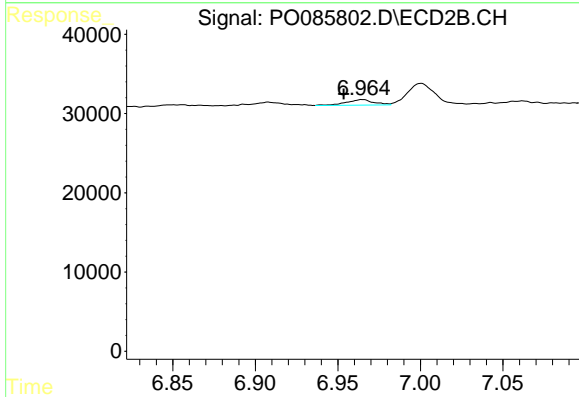
R.T.: 6.756 min
 Delta R.T.: 0.008 min
 Response: 3704
 Conc: 2.51 ng/ml



#37 AR-1262-2

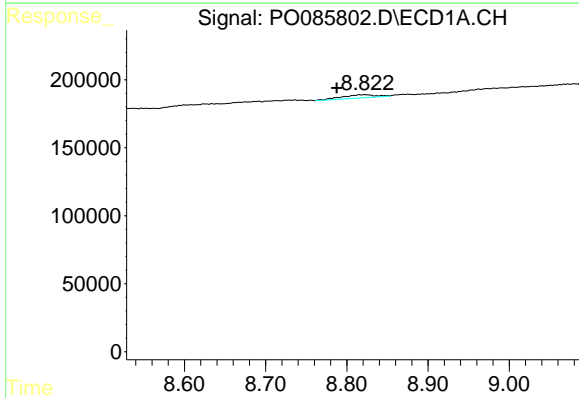
R.T.: 8.479 min
 Delta R.T.: 0.016 min
 Response: 107917
 Conc: 5.69 ng/ml

Instrument :
 ECD_O
 ClientSampleId :
 AR1248CCC500



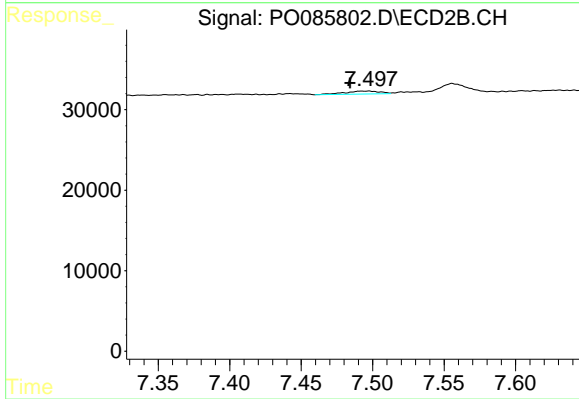
#37 AR-1262-2

R.T.: 6.965 min
 Delta R.T.: 0.011 min
 Response: 7935
 Conc: 2.73 ng/ml



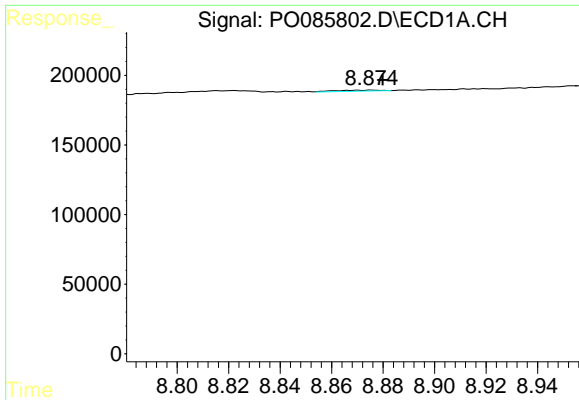
#38 AR-1262-3

R.T.: 8.822 min
 Delta R.T.: 0.034 min
 Response: 68029
 Conc: 5.99 ng/ml



#38 AR-1262-3

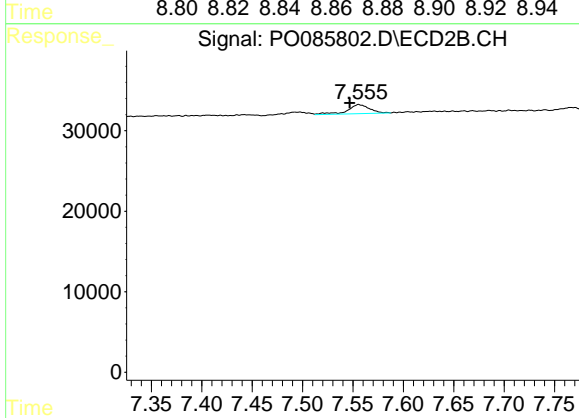
R.T.: 7.495 min
 Delta R.T.: 0.011 min
 Response: 6190
 Conc: 1.21 ng/ml



#39 AR-1262-4

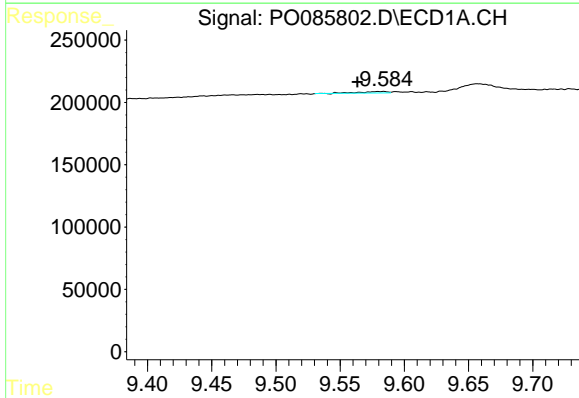
R.T.: 8.876 min
 Delta R.T.: -0.004 min
 Response: 9335
 Conc: 1.71 ng/ml

Instrument :
 ECD_O
 ClientSampleId :
 AR1248CCC500



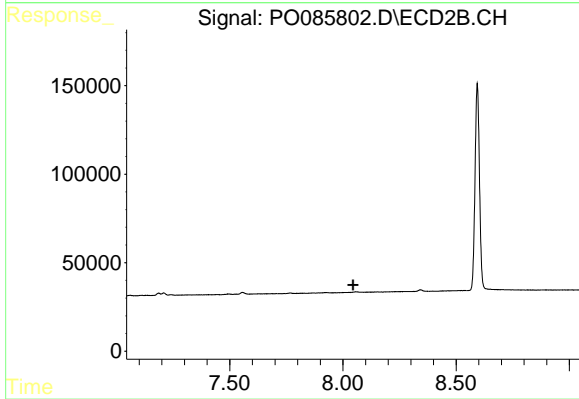
#39 AR-1262-4

R.T.: 7.556 min
 Delta R.T.: 0.009 min
 Response: 16883
 Conc: 3.34 ng/ml



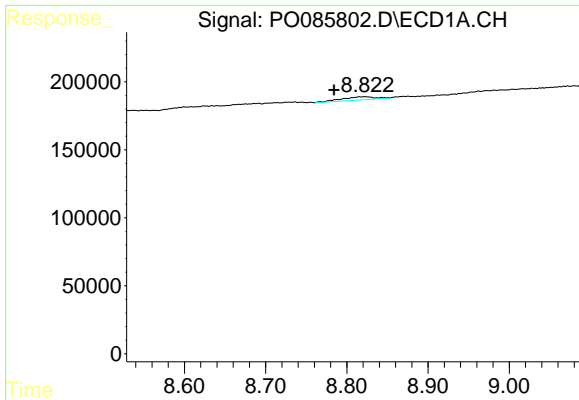
#40 AR-1262-5

R.T.: 9.584 min
 Delta R.T.: 0.020 min
 Response: 17030
 Conc: 2.74 ng/ml



#40 AR-1262-5

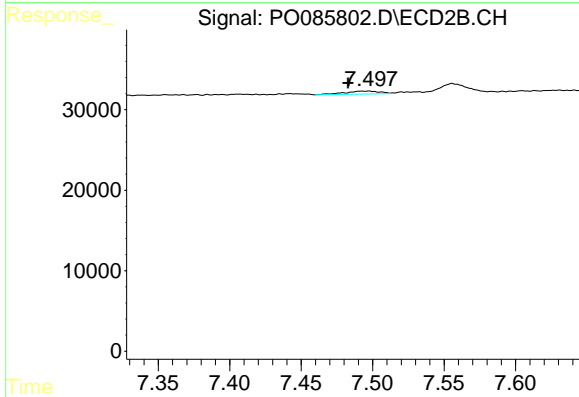
R.T.: 0.000 min
 Exp R.T. : 8.044 min
 Response: 0
 Conc: N.D.



#41 AR-1268-1

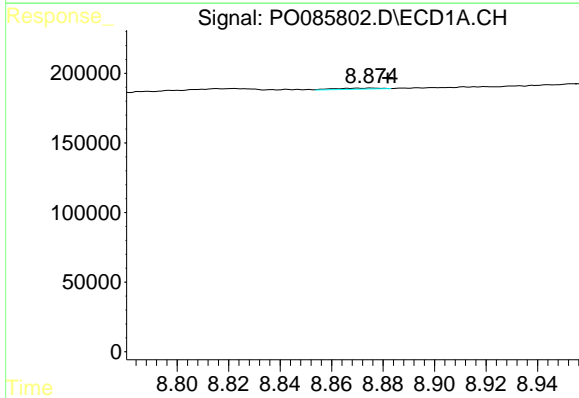
R.T.: 8.822 min
 Delta R.T.: 0.038 min
 Response: 68029
 Conc: 3.32 ng/ml

Instrument :
 ECD_O
 ClientSampleId :
 AR1248CCC500



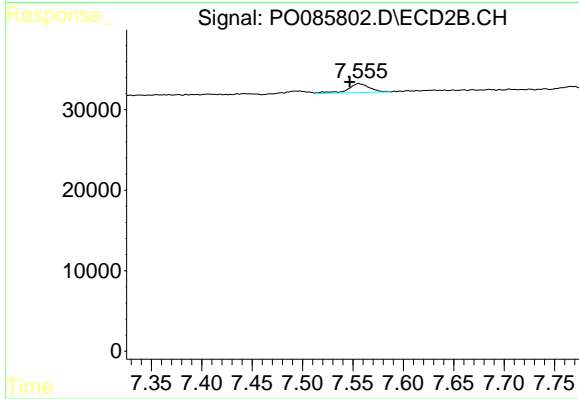
#41 AR-1268-1

R.T.: 7.495 min
 Delta R.T.: 0.012 min
 Response: 6190
 Conc: 0.62 ng/ml



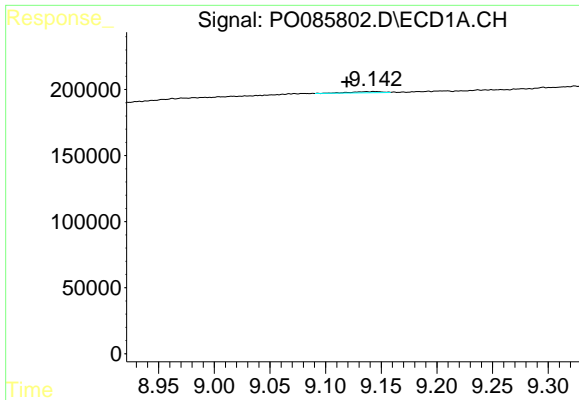
#42 AR-1268-2

R.T.: 8.876 min
 Delta R.T.: -0.006 min
 Response: 9335
 Conc: 0.46 ng/ml



#42 AR-1268-2

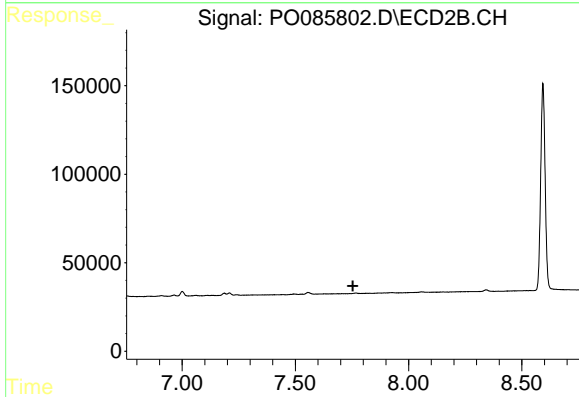
R.T.: 7.556 min
 Delta R.T.: 0.009 min
 Response: 16883
 Conc: 2.44 ng/ml



#43 AR-1268-3

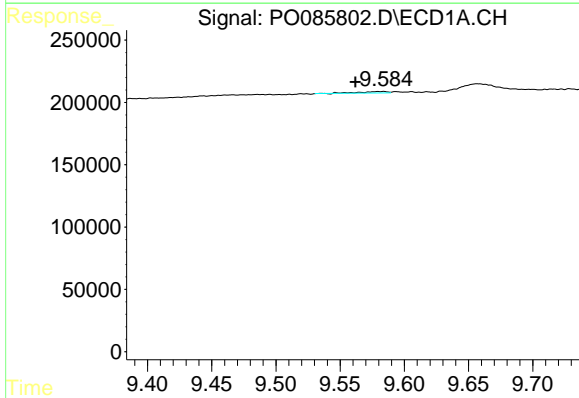
R.T.: 9.143 min
 Delta R.T.: 0.025 min
 Response: 18256
 Conc: 1.11 ng/ml

Instrument :
 ECD_O
 ClientSampleId :
 AR1248CCC500



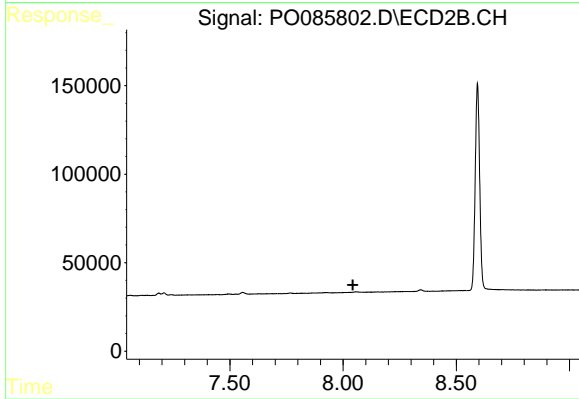
#43 AR-1268-3

R.T.: 0.000 min
 Exp R.T. : 7.754 min
 Response: 0
 Conc: N.D.



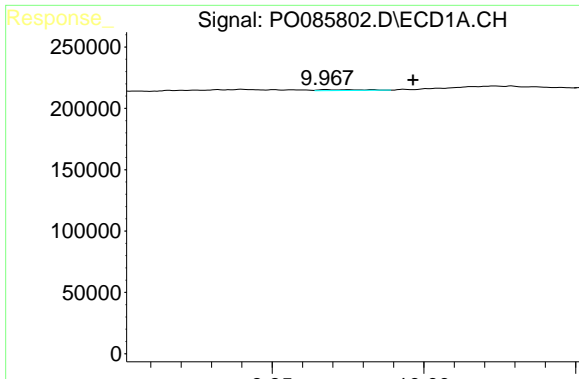
#44 AR-1268-4

R.T.: 9.584 min
 Delta R.T.: 0.022 min
 Response: 17030
 Conc: 2.42 ng/ml



#44 AR-1268-4

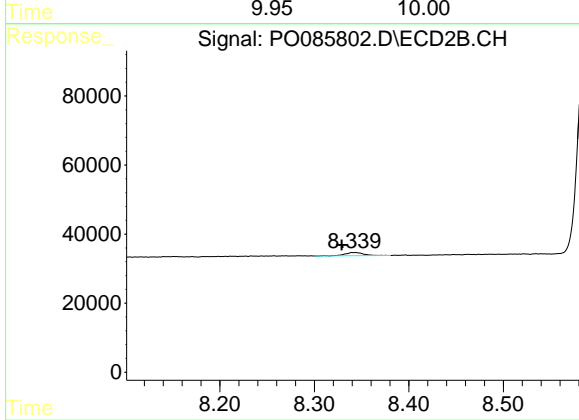
R.T.: 0.000 min
 Exp R.T. : 8.044 min
 Response: 0
 Conc: N.D.



#45 AR-1268-5

R.T.: 9.971 min
 Delta R.T.: -0.025 min
 Response: 6774
 Conc: 0.12 ng/ml

Instrument :
 ECD_O
 ClientSampleId :
 AR1248CCC500



#45 AR-1268-5

R.T.: 8.343 min
 Delta R.T.: 0.014 min
 Response: 13444
 Conc: 1.00 ng/ml