

Data Path : Z:\pestpcbsrv\HPCHEM1\ECD_O\Data\P0033123\
 Data File : P0093680.D
 Signal(s) : Signal #1: ECD1A.ch Signal #2: ECD2B.ch
 Acq On : 31 Mar 2023 14:18
 Operator : YP/AJ
 Sample : 02127-01 10X
 Misc :
 ALS Vial : 9 Sample Multiplier: 1

Instrument :
 ECD_O
 ClientSampleId :
 BC106975-1-1

Integration File signal 1: autoint1.e
 Integration File signal 2: autoint2.e
 Quant Time: Mar 31 22:06:42 2023
 Quant Method : Z:\pestpcbsrv\HPCHEM1\ECD_O\methods\P0031323.M
 Quant Title : GC EXTRACTABLES
 QLast Update : Tue Mar 14 05:32:59 2023
 Response via : Initial Calibration
 Integrator: ChemStation

Volume Inj. : 2 µl
 Signal #1 Phase : ZB-MR1 Signal #2 Phase: ZB-MR2
 Signal #1 Info : 30Mx0.32mmx 0.50µ Signal #2 Info : 30M x 0.32mm x 0.25µm

Compound	RT#1	RT#2	Resp#1	Resp#2	ng/ml	ng/ml

System Monitoring Compounds						
1) SA Tetrachlo...	4.424	3.630	5806434	1977838	1.854	1.754
2) SA Decachlor...	10.251	8.653	5022219	2204942	2.320	2.252

Target Compounds

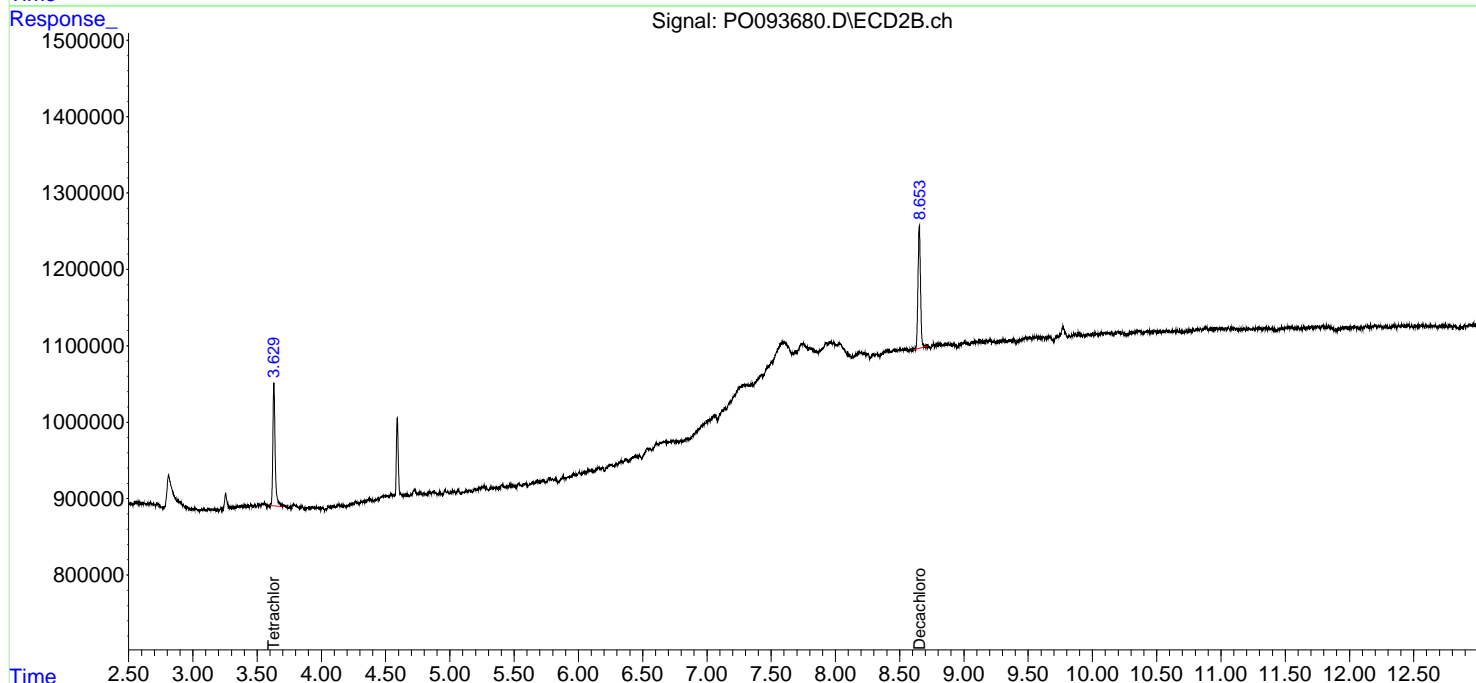
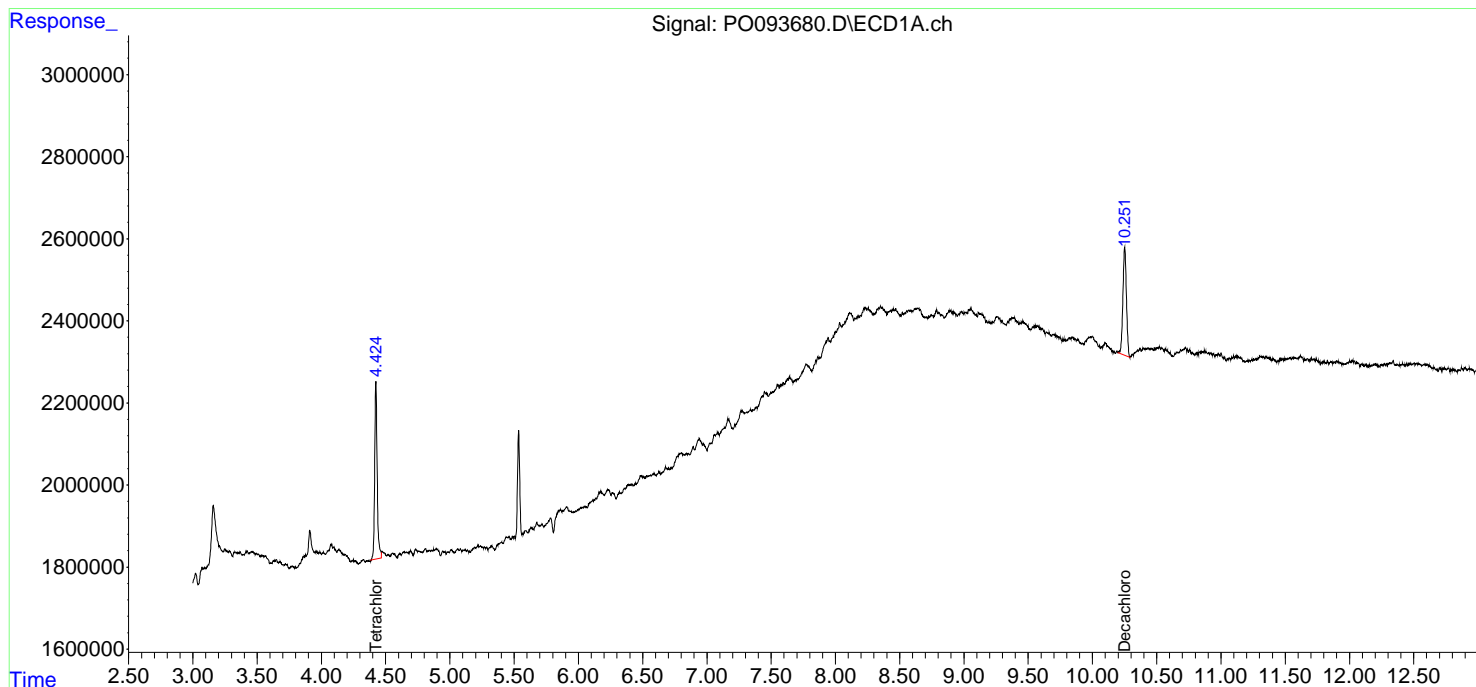
(f)=RT Delta > 1/2 Window (#)=Amounts differ by > 25% (m)=manual int.

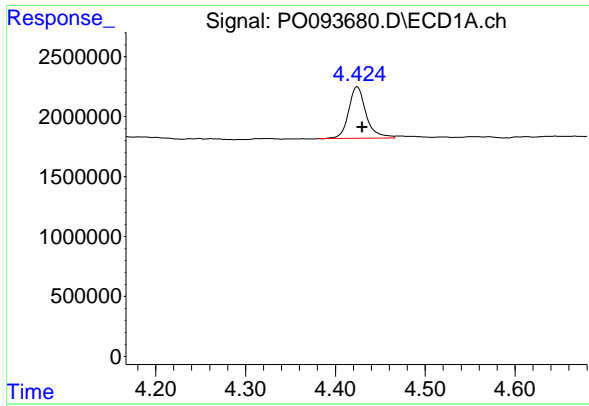
Data Path : Z:\pestpcbsrv\HPCHEM1\ECD_O\Data\PO033123\
 Data File : PO093680.D
 Signal(s) : Signal #1: ECD1A.ch Signal #2: ECD2B.ch
 Acq On : 31 Mar 2023 14:18
 Operator : YP/AJ
 Sample : 02127-01 10X
 Misc :
 ALS Vial : 9 Sample Multiplier: 1

Instrument :
 ECD_O
 ClientSampleId :
 BC106975-1-1

Integration File signal 1: autoint1.e
 Integration File signal 2: autoint2.e
 Quant Time: Mar 31 22:06:42 2023
 Quant Method : Z:\pestpcbsrv\HPCHEM1\ECD_O\methods\PO031323.M
 Quant Title : GC EXTRACTABLES
 QLast Update : Tue Mar 14 05:32:59 2023
 Response via : Initial Calibration
 Integrator: ChemStation

Volume Inj. : 2 µl
 Signal #1 Phase : ZB-MR1 Signal #2 Phase: ZB-MR2
 Signal #1 Info : 30Mx0.32mmx 0.50µm Signal #2 Info : 30M x 0.32mm x 0.25µm

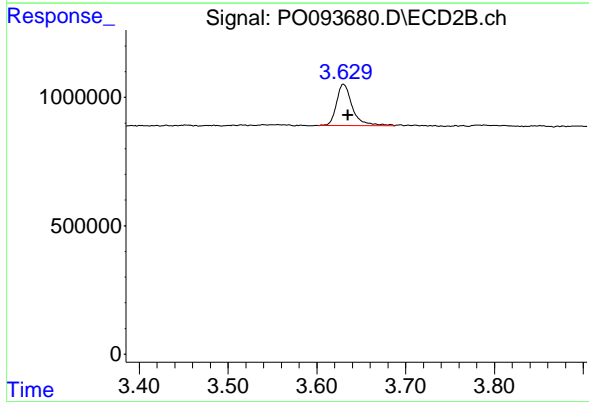




#1 Tetrachloro-m-xylene

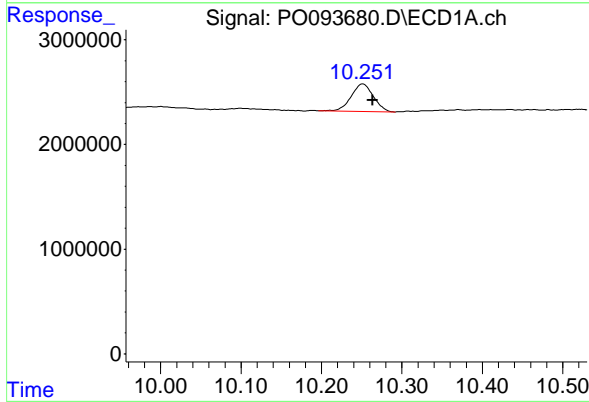
R.T.: 4.424 min
 Delta R.T.: -0.006 min
 Response: 5806434
 Conc: 1.85 ng/ml

Instrument :
 ECD_O
 ClientSampleId :
 BC106975-1-1



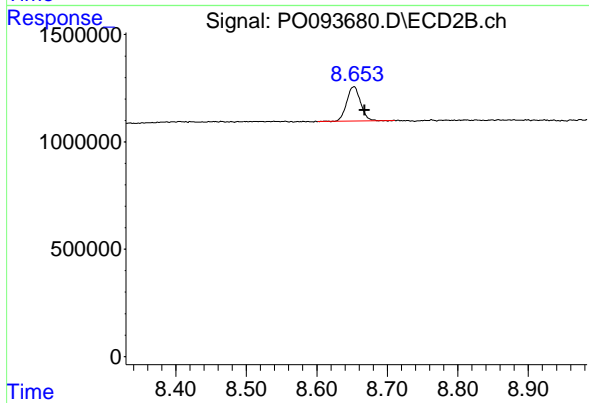
#1 Tetrachloro-m-xylene

R.T.: 3.630 min
 Delta R.T.: -0.005 min
 Response: 1977838
 Conc: 1.75 ng/ml



#2 Decachlorobiphenyl

R.T.: 10.251 min
 Delta R.T.: -0.012 min
 Response: 5022219
 Conc: 2.32 ng/ml



#2 Decachlorobiphenyl

R.T.: 8.653 min
 Delta R.T.: -0.015 min
 Response: 2204942
 Conc: 2.25 ng/ml