

Data Path : Z:\pestpcbsrv\HPCHEM1\ECD_0\Data\P0040121\
 Data File : P0076713.D
 Signal(s) : Signal #1: ECD1A.CH Signal #2: ECD2B.CH
 Acq On : 01 Apr 2021 14:21
 Operator : DD\AJ
 Sample : AR1660ICC1000
 Misc :
 ALS Vial : 3 Sample Multiplier: 1

Instrument :
 ECD_0
 ClientSampleId :
 AR1660ICC1000

Integration File signal 1: autoint1.e
 Integration File signal 2: autoint2.e
 Quant Time: Apr 02 01:55:32 2021
 Quant Method : Z:\pestpcbsrv\HPCHEM1\ECD_0\methods\P0040121.M
 Quant Title : GC EXTRACTABLES
 QLast Update : Fri Apr 02 01:55:06 2021
 Response via : Initial Calibration
 Integrator: ChemStation 6890 Scale Mode: Small noise peaks clipped

Volume Inj. : 2 µl
 Signal #1 Phase : ZB-MR2 Signal #2 Phase: ZB-MR2
 Signal #1 Info : 30Mx0.32mmx 0.50µ Signal #2 Info : 30M x 0.32mm x 0.25µm

Compound	RT#1	RT#2	Resp#1	Resp#2	ng/ml	ng/ml

System Monitoring Compounds						
1) SA Tetrachlo...	4.900	3.897	9233427	4920073	100.427	98.674
2) SA Decachlor...	10.876	9.147	8889824	4651045	96.586	94.673
Target Compounds						
3) L1 AR-1016-1	6.223	5.145	2911190	1389718	1009.848	995.378
4) L1 AR-1016-2	6.247	5.164	4514903	2634058	969.793	956.483
5) L1 AR-1016-3	6.313	5.354	2735108	1213020	965.691	996.428
6) L1 AR-1016-4	6.420	5.405	2226774	1062778	985.778	960.741
7) L1 AR-1016-5	6.734	5.632	2132835	1263733	983.639	956.528
31) L7 AR-1260-1	7.909	6.719	3875521	2408426	965.597	942.571
32) L7 AR-1260-2	8.176	6.917	4766958	2949067	971.385	951.815
33) L7 AR-1260-3	8.541	7.070	3762671	2757247	971.079	950.009
34) L7 AR-1260-4	8.772	7.550	4204117	2345184	969.528	949.153
35) L7 AR-1260-5	9.094	7.797	8624188	5691939	1007.254	969.870

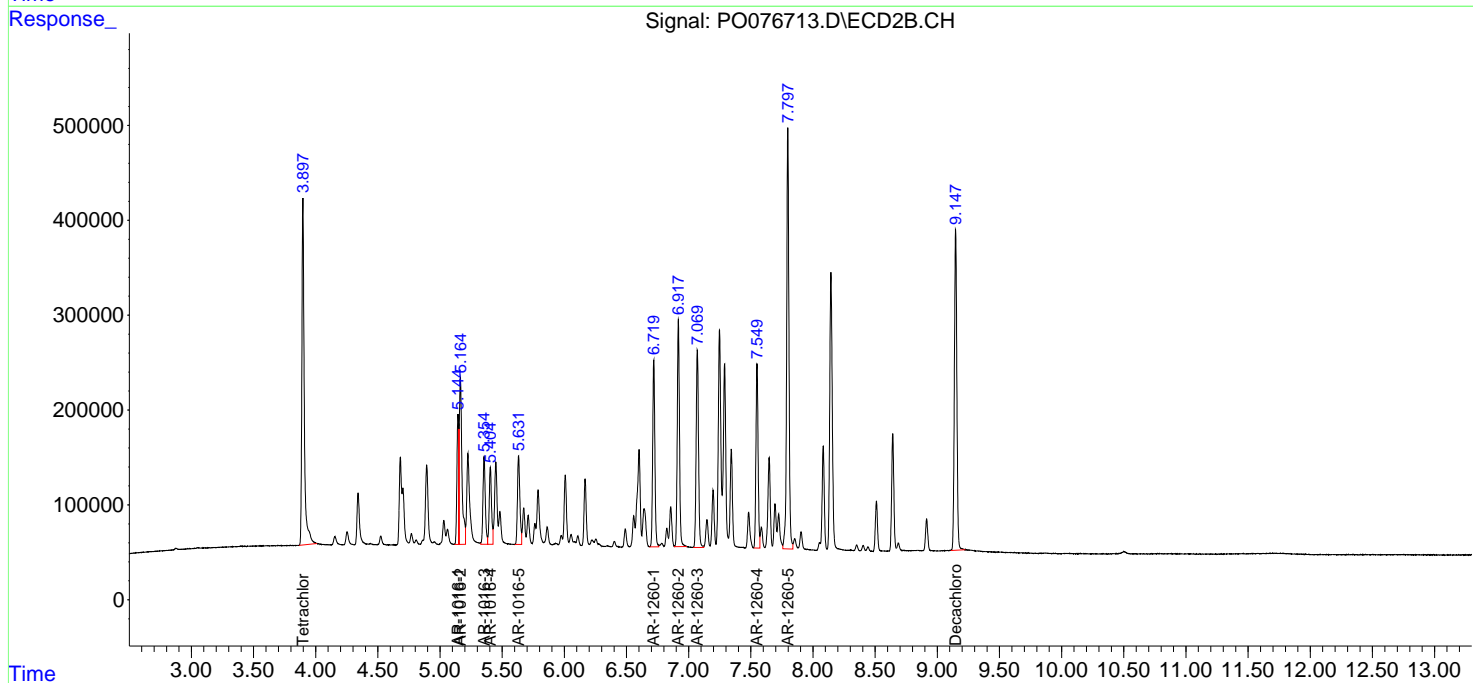
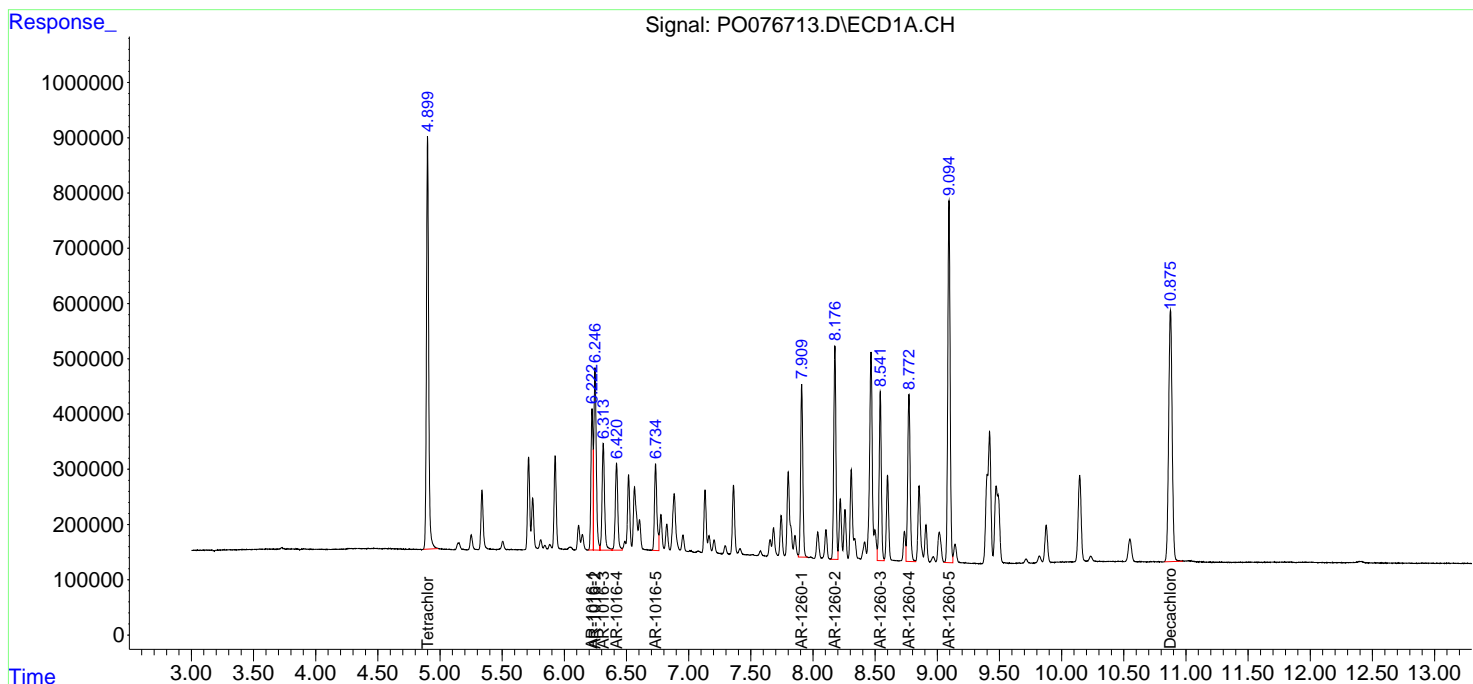
(f)=RT Delta > 1/2 Window (#)=Amounts differ by > 25% (m)=manual int.

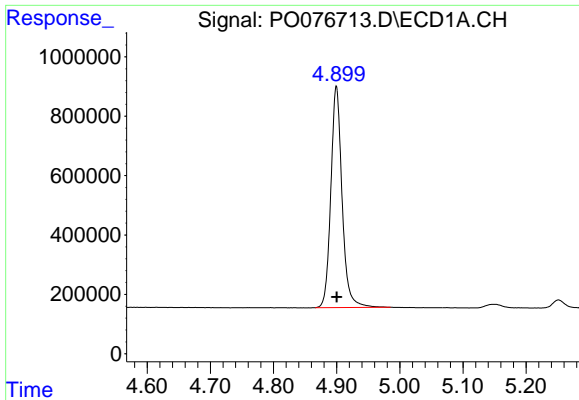
Data Path : Z:\pestpcbsrv\HPCHEM1\ECD_0\Data\P0040121\
 Data File : P0076713.D
 Signal(s) : Signal #1: ECD1A.CH Signal #2: ECD2B.CH
 Acq On : 01 Apr 2021 14:21
 Operator : DD\AJ
 Sample : AR1660ICC1000
 Misc :
 ALS Vial : 3 Sample Multiplier: 1

Instrument :
 ECD_O
 ClientSampled :
 AR1660ICC1000

Integration File signal 1: autoint1.e
 Integration File signal 2: autoint2.e
 Quant Time: Apr 02 01:55:32 2021
 Quant Method : Z:\pestpcbsrv\HPCHEM1\ECD_0\methods\P0040121.M
 Quant Title : GC EXTRACTABLES
 QLast Update : Fri Apr 02 01:55:06 2021
 Response via : Initial Calibration
 Integrator: ChemStation 6890 Scale Mode: Small noise peaks clipped

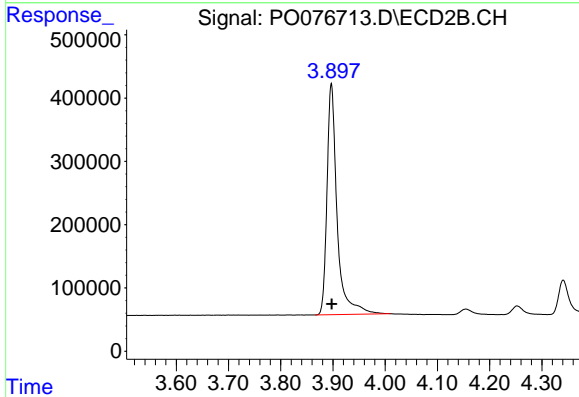
Volume Inj. : 2 µl
 Signal #1 Phase : ZB-MR1 Signal #2 Phase: ZB-MR2
 Signal #1 Info : 30Mx0.32mmx 0.50µ Signal #2 Info : 30M x 0.32mm x 0.25µm



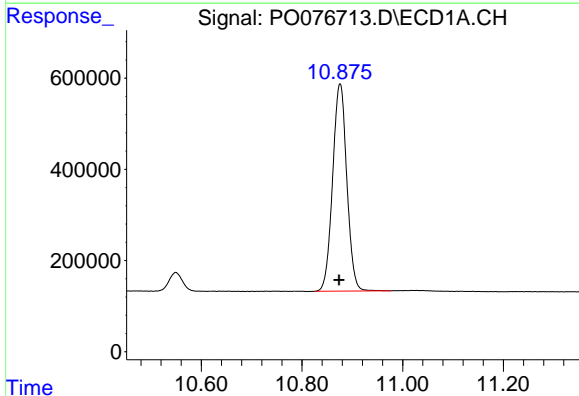


#1 Tetrachloro-m-xylene
 R.T.: 4.900 min
 Delta R.T.: 0.000 min
 Response: 9233427
 Conc: 100.43 ng/ml

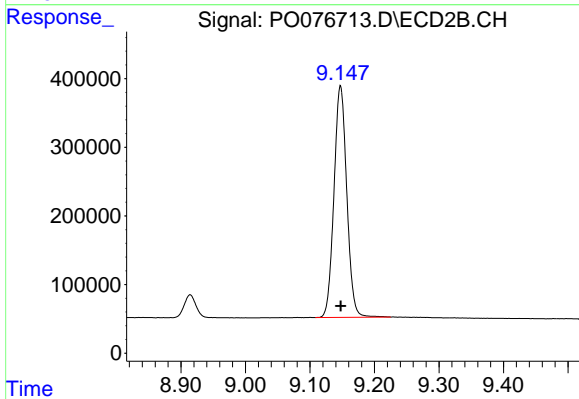
Instrument :
 ECD_O
 ClientSampleId :
 AR1660ICC1000



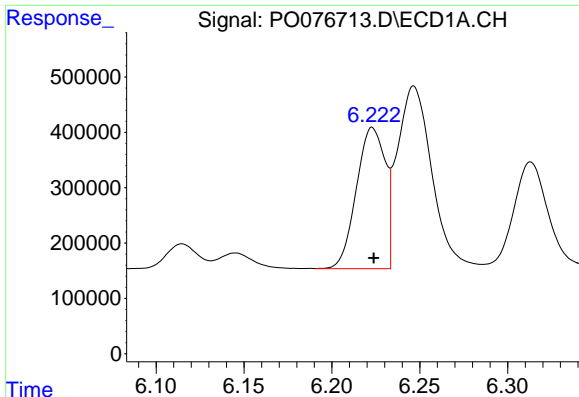
#1 Tetrachloro-m-xylene
 R.T.: 3.897 min
 Delta R.T.: 0.000 min
 Response: 4920073
 Conc: 98.67 ng/ml



#2 Decachlorobiphenyl
 R.T.: 10.876 min
 Delta R.T.: 0.002 min
 Response: 8889824
 Conc: 96.59 ng/ml



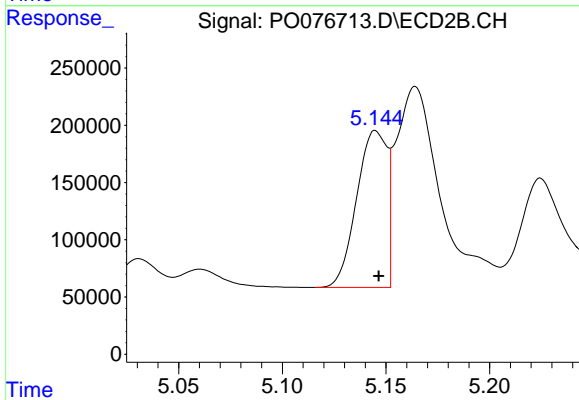
#2 Decachlorobiphenyl
 R.T.: 9.147 min
 Delta R.T.: 0.000 min
 Response: 4651045
 Conc: 94.67 ng/ml



#3 AR-1016-1

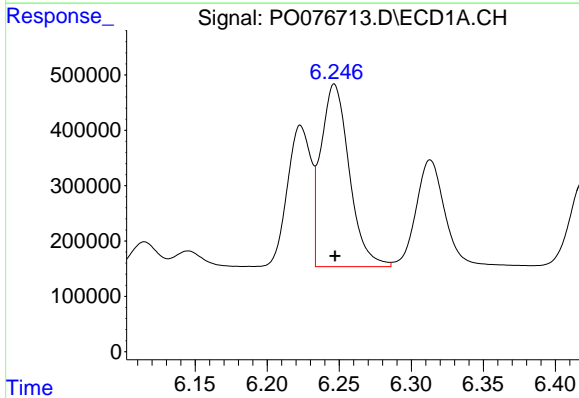
R.T.: 6.223 min
 Delta R.T.: 0.000 min
 Response: 2911190
 Conc: 1009.85 ng/ml

Instrument :
 ECD_O
 ClientSampled :
 AR1660ICC1000



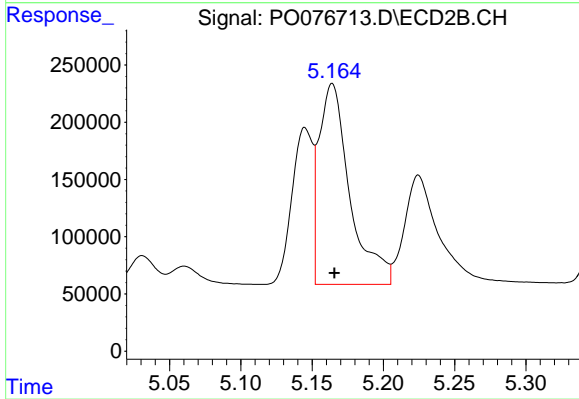
#3 AR-1016-1

R.T.: 5.145 min
 Delta R.T.: -0.001 min
 Response: 1389718
 Conc: 995.38 ng/ml



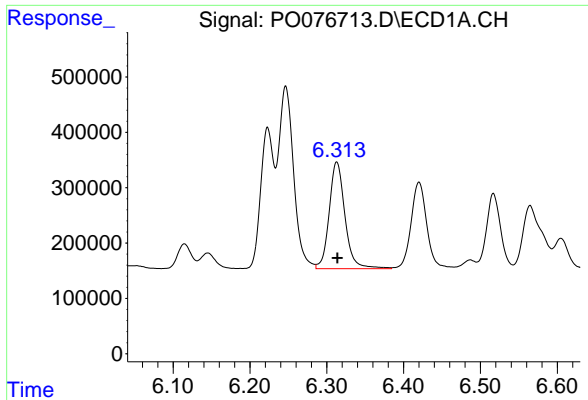
#4 AR-1016-2

R.T.: 6.247 min
 Delta R.T.: 0.000 min
 Response: 4514903
 Conc: 969.79 ng/ml



#4 AR-1016-2

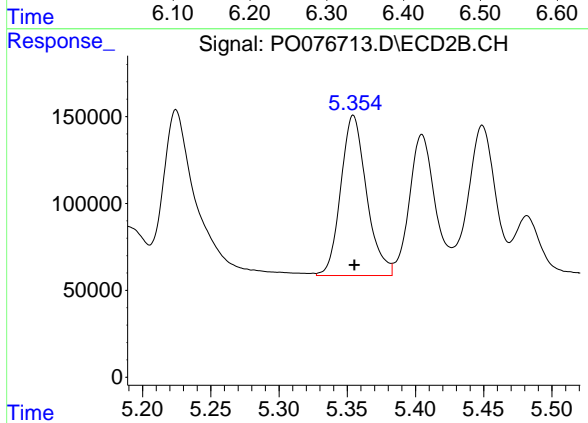
R.T.: 5.164 min
 Delta R.T.: -0.002 min
 Response: 2634058
 Conc: 956.48 ng/ml



#5 AR-1016-3

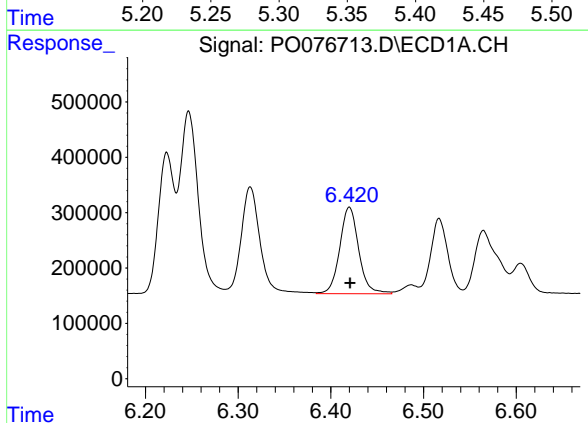
R.T.: 6.313 min
 Delta R.T.: 0.000 min
 Response: 2735108
 Conc: 965.69 ng/ml

Instrument :
 ECD_O
 ClientSampled :
 AR1660ICC1000



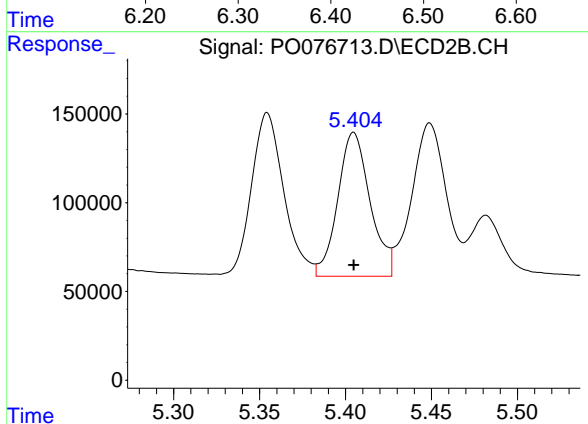
#5 AR-1016-3

R.T.: 5.354 min
 Delta R.T.: 0.000 min
 Response: 1213020
 Conc: 996.43 ng/ml



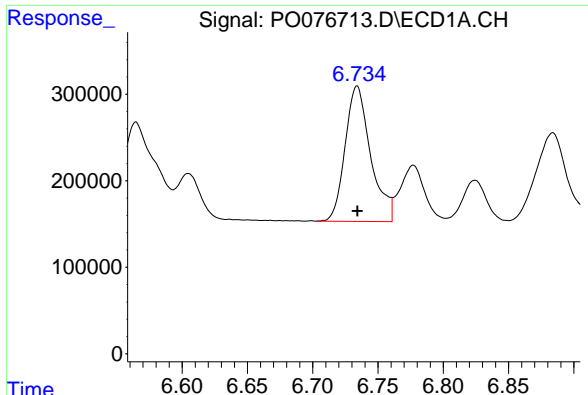
#6 AR-1016-4

R.T.: 6.420 min
 Delta R.T.: 0.000 min
 Response: 2226774
 Conc: 985.78 ng/ml



#6 AR-1016-4

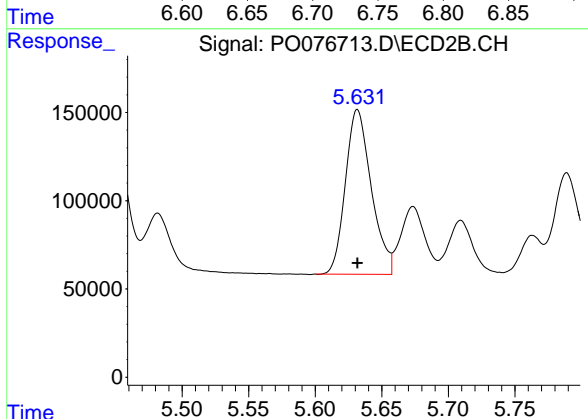
R.T.: 5.405 min
 Delta R.T.: 0.000 min
 Response: 1062778
 Conc: 960.74 ng/ml



#7 AR-1016-5

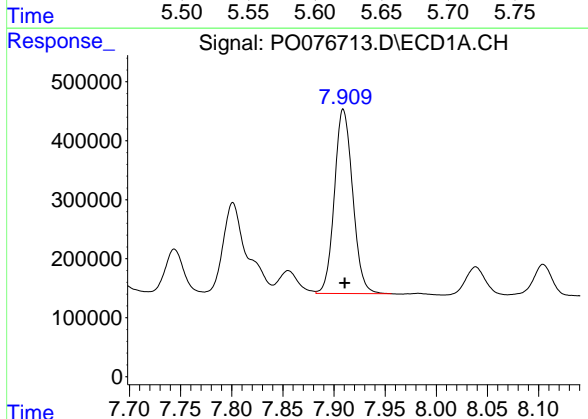
R.T.: 6.734 min
 Delta R.T.: 0.000 min
 Response: 2132835
 Conc: 983.64 ng/ml

Instrument :
 ECD_O
 ClientSampled :
 AR1660ICC1000



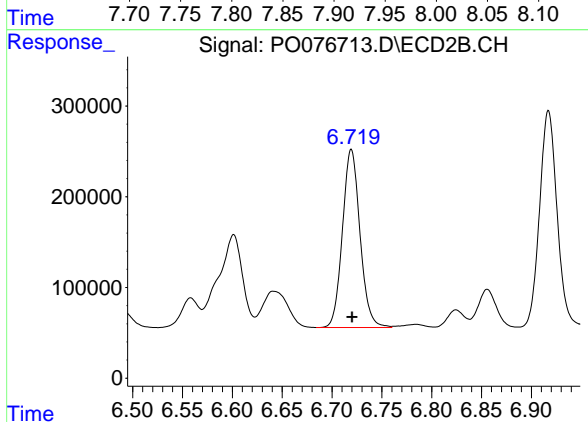
#7 AR-1016-5

R.T.: 5.632 min
 Delta R.T.: 0.000 min
 Response: 1263733
 Conc: 956.53 ng/ml



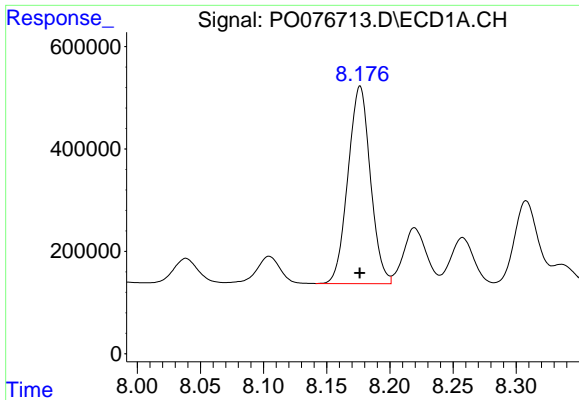
#31 AR-1260-1

R.T.: 7.909 min
 Delta R.T.: -0.001 min
 Response: 3875521
 Conc: 965.60 ng/ml



#31 AR-1260-1

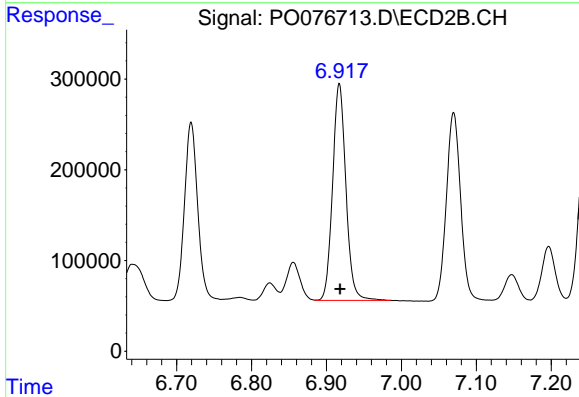
R.T.: 6.719 min
 Delta R.T.: 0.000 min
 Response: 2408426
 Conc: 942.57 ng/ml



#32 AR-1260-2

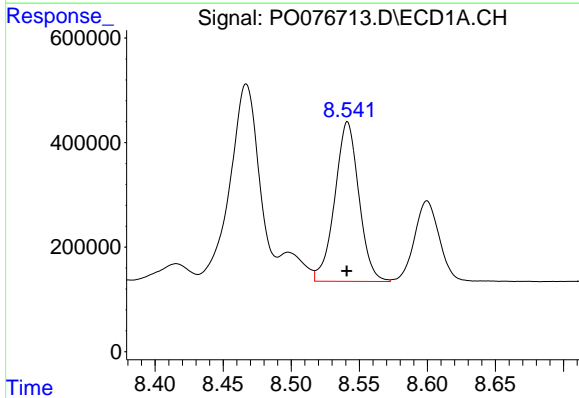
R.T.: 8.176 min
 Delta R.T.: 0.000 min
 Response: 4766958
 Conc: 971.38 ng/ml

Instrument :
 ECD_O
ClientSampled :
 AR1660ICC1000



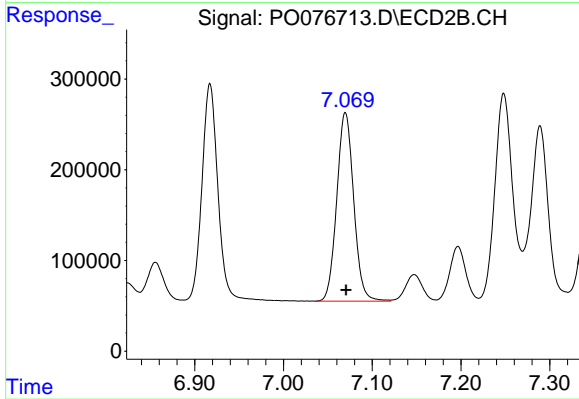
#32 AR-1260-2

R.T.: 6.917 min
 Delta R.T.: -0.001 min
 Response: 2949067
 Conc: 951.82 ng/ml



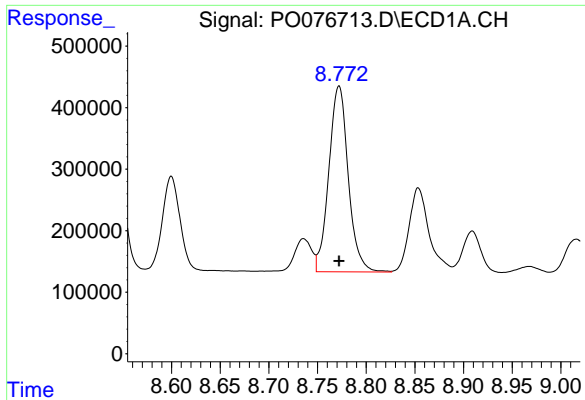
#33 AR-1260-3

R.T.: 8.541 min
 Delta R.T.: 0.000 min
 Response: 3762671
 Conc: 971.08 ng/ml



#33 AR-1260-3

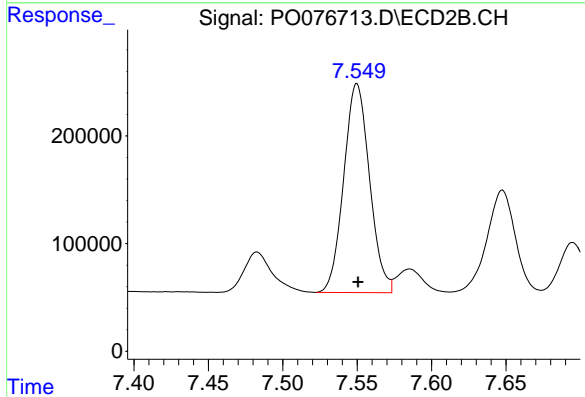
R.T.: 7.070 min
 Delta R.T.: 0.000 min
 Response: 2757247
 Conc: 950.01 ng/ml



#34 AR-1260-4

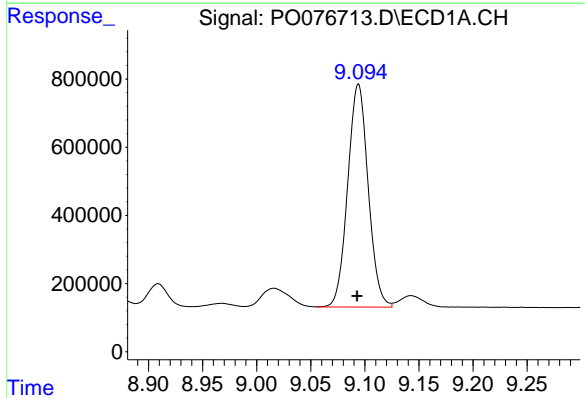
R.T.: 8.772 min
 Delta R.T.: 0.000 min
 Response: 4204117
 Conc: 969.53 ng/ml

Instrument :
 ECD_O
 ClientSampleId :
 AR1660ICC1000



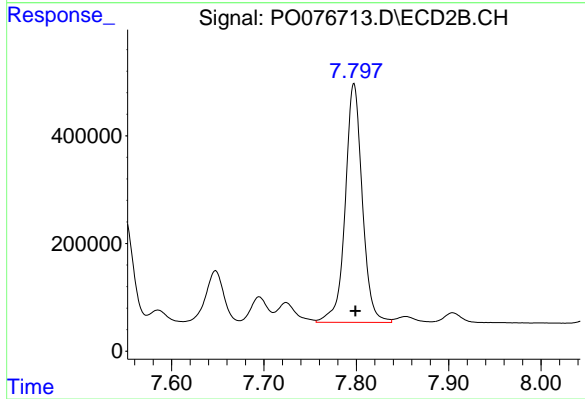
#34 AR-1260-4

R.T.: 7.550 min
 Delta R.T.: 0.000 min
 Response: 2345184
 Conc: 949.15 ng/ml



#35 AR-1260-5

R.T.: 9.094 min
 Delta R.T.: 0.001 min
 Response: 8624188
 Conc: 1007.25 ng/ml



#35 AR-1260-5

R.T.: 7.797 min
 Delta R.T.: -0.002 min
 Response: 5691939
 Conc: 969.87 ng/ml