

Data Path : Z:\pestpcbsrv\HPCHEM1\ECD\_0\Data\P0040121\  
 Data File : P0076739.D  
 Signal(s) : Signal #1: ECD1A.CH Signal #2: ECD2B.CH  
 Acq On : 01 Apr 2021 21:47  
 Operator : DD\AJ  
 Sample : AR1262ICC050  
 Misc :  
 ALS Vial : 29 Sample Multiplier: 1

**Instrument :**  
 ECD\_0  
**ClientSampleId :**  
 AR1262ICC050

**Manual Integrations**  
**APPROVED**

Ankita  
 4/2/2021 11:28:18 AM

Integration File signal 1: autoint1.e  
 Integration File signal 2: autoint2.e  
 Quant Time: Apr 02 04:17:18 2021  
 Quant Method : Z:\pestpcbsrv\HPCHEM1\ECD\_0\methods\P0040121.M  
 Quant Title : GC EXTRACTABLES  
 QLast Update : Fri Apr 02 04:14:52 2021  
 Response via : Initial Calibration  
 Integrator: ChemStation 6890 Scale Mode: Small noise peaks clipped

Volume Inj. : 2 µl  
 Signal #1 Phase : ZB-MR1 Signal #2 Phase: ZB-MR2  
 Signal #1 Info : 30Mx0.32mmx 0.50µ Signal #2 Info : 30M x 0.32mm x 0.25µm

Compound	RT#1	RT#2	Resp#1	Resp#2	ng/ml	ng/ml
-----						
System Monitoring Compounds						
1) SA Tetrachlo...	4.901	3.898	424979	242588	4.843	5.248
2) SA Decachlor...	10.872	9.144	456247	252209	5.129	5.648
Target Compounds						
36) L8 AR-1262-1	8.540	7.246	281729	99567	50.602	57.627
37) L8 AR-1262-2	9.093	7.797	486578	321492	49.355m	53.556m
38) L8 AR-1262-3	9.399	8.080	317973	142301	48.487	57.823m
39) L8 AR-1262-4	9.490	8.144	247485	246017	48.601	55.116
40) L8 AR-1262-5	10.144	8.640	169751	102387	48.111	51.521
-----						

(f)=RT Delta > 1/2 Window (#)=Amounts differ by > 25% (m)=manual int.

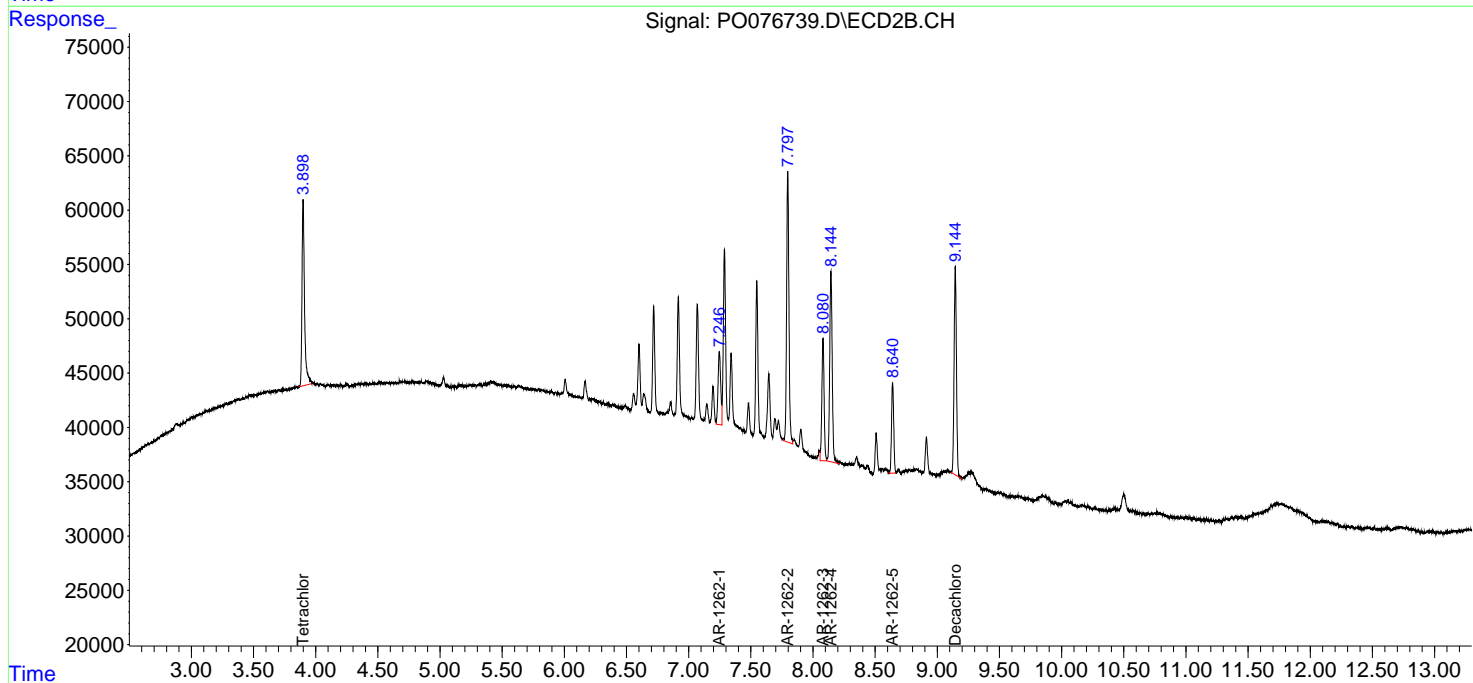
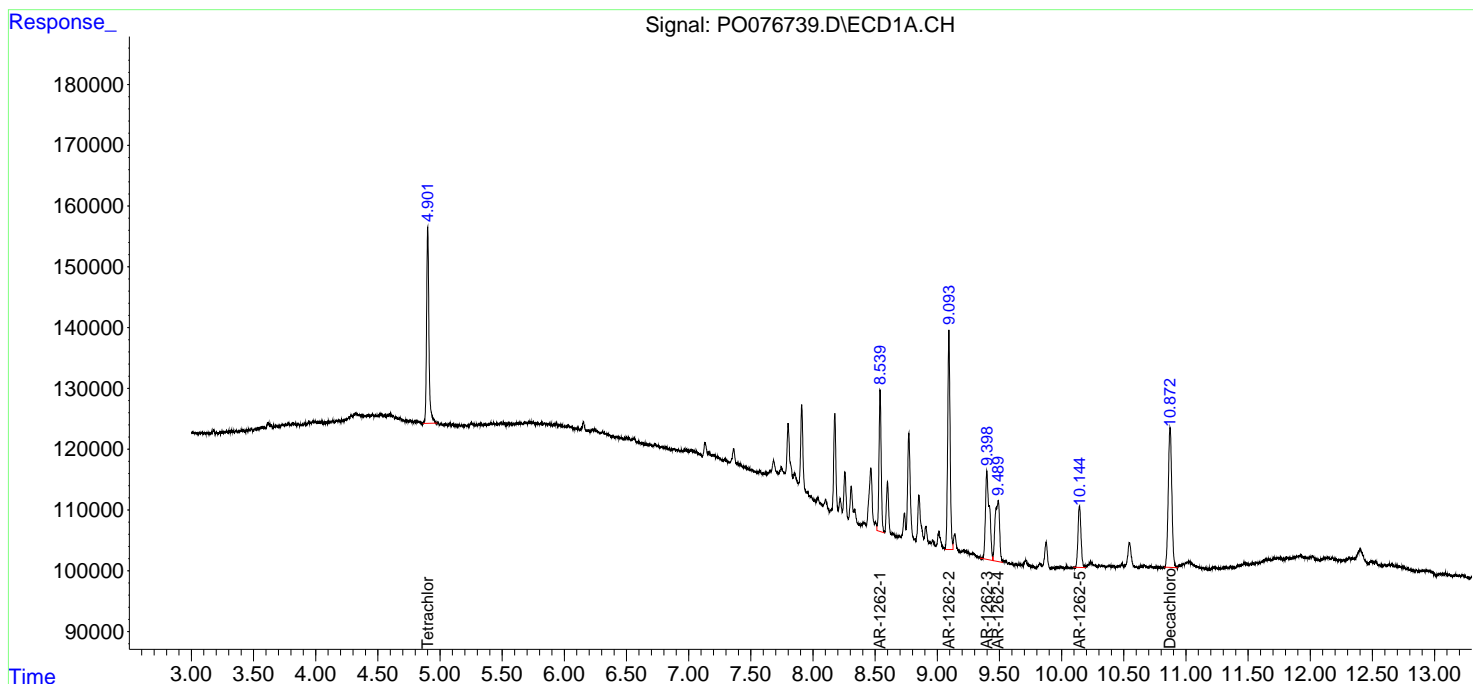
Data Path : Z:\pestpcbsrv\HPCHEM1\ECD\_O\Data\PO040121\  
 Data File : PO076739.D  
 Signal(s) : Signal #1: ECD1A.CH Signal #2: ECD2B.CH  
 Acq On : 01 Apr 2021 21:47  
 Operator : DD\AJ  
 Sample : AR1262ICC050  
 Misc :  
 ALS Vial : 29 Sample Multiplier: 1

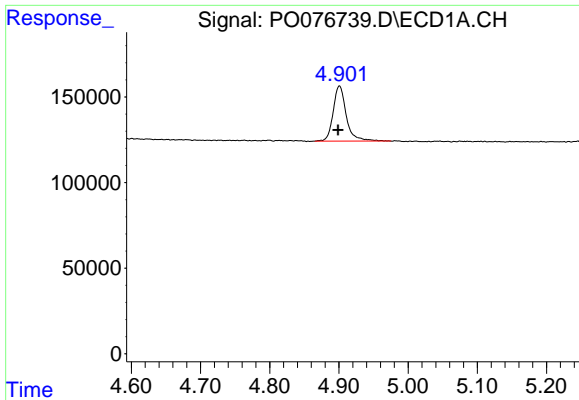
**Instrument :**  
 ECD\_O  
**ClientSampled :**  
 AR1262ICC050

**Manual Integrations**  
**APPROVED**  
 Ankita  
 4/2/2021 11:28:18 AM

Integration File signal 1: autoint1.e  
 Integration File signal 2: autoint2.e  
 Quant Time: Apr 02 04:17:18 2021  
 Quant Method : Z:\pestpcbsrv\HPCHEM1\ECD\_O\methods\PO040121.M  
 Quant Title : GC EXTRACTABLES  
 QLast Update : Fri Apr 02 04:14:52 2021  
 Response via : Initial Calibration  
 Integrator: ChemStation 6890 Scale Mode: Small noise peaks clipped

Volume Inj. : 2 µl  
 Signal #1 Phase : ZB-MR1 Signal #2 Phase: ZB-MR2  
 Signal #1 Info : 30Mx0.32mmx 0.50µ Signal #2 Info : 30M x 0.32mm x 0.25µm

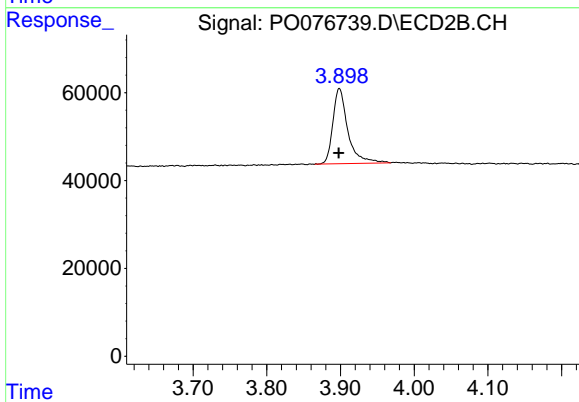




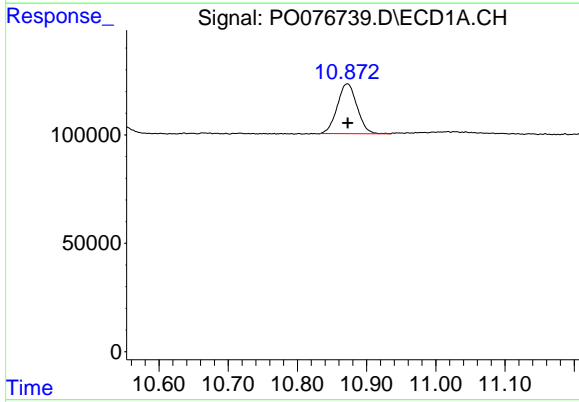
#1 Tetrachloro-m-xylene  
 R.T.: 4.901 min  
 Delta R.T.: 0.002 min  
 Response: 424979  
 Conc: 4.84 ng/ml

Instrument :  
 ECD\_O  
 ClientSampleId :  
 AR1262ICC050

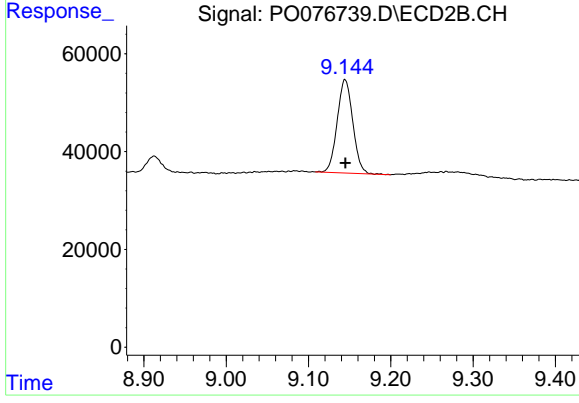
Manual Integrations  
**APPROVED**  
 Ankita  
 4/2/2021 11:28:18 AM



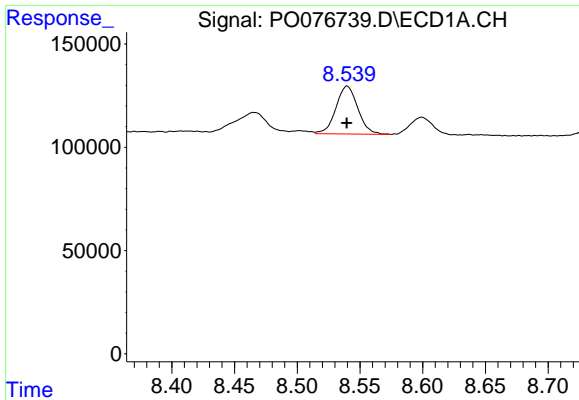
#1 Tetrachloro-m-xylene  
 R.T.: 3.898 min  
 Delta R.T.: 0.000 min  
 Response: 242588  
 Conc: 5.25 ng/ml



#2 Decachlorobiphenyl  
 R.T.: 10.872 min  
 Delta R.T.: 0.000 min  
 Response: 456247  
 Conc: 5.13 ng/ml



#2 Decachlorobiphenyl  
 R.T.: 9.144 min  
 Delta R.T.: 0.000 min  
 Response: 252209  
 Conc: 5.65 ng/ml

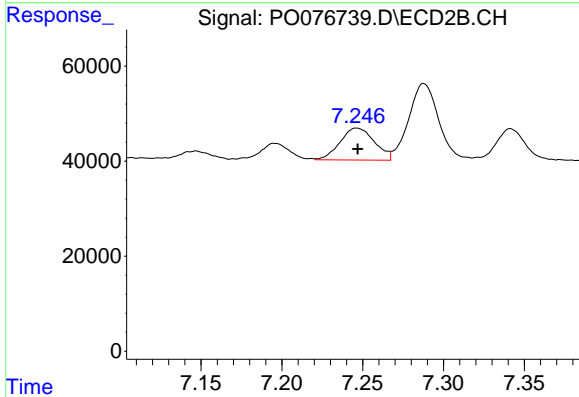


#36 AR-1262-1

R.T.: 8.540 min  
 Delta R.T.: 0.000 min  
 Response: 281729  
 Conc: 50.60 ng/ml

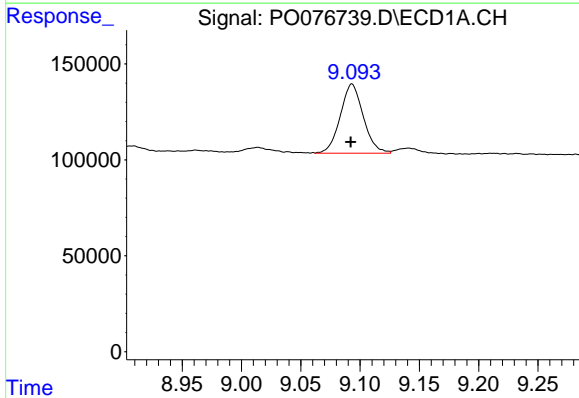
**Instrument :**  
 ECD\_O  
**ClientSampled :**  
 AR1262ICC050

**Manual Integrations**  
**APPROVED**  
 Ankita  
 4/2/2021 11:28:18 AM



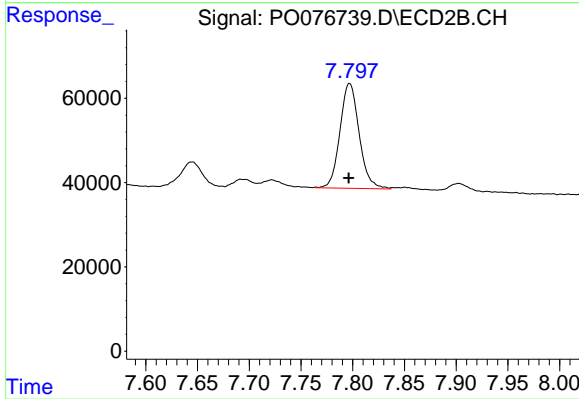
#36 AR-1262-1

R.T.: 7.246 min  
 Delta R.T.: 0.000 min  
 Response: 99567  
 Conc: 57.63 ng/ml



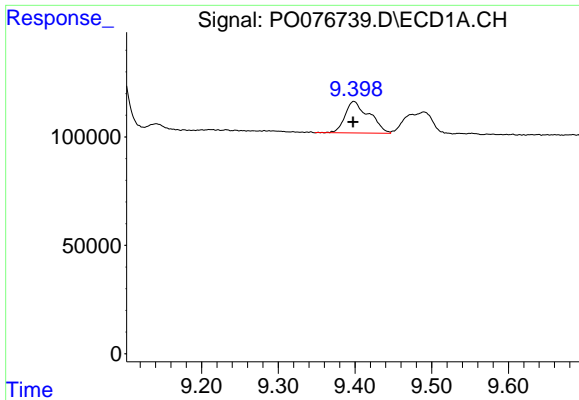
#37 AR-1262-2

R.T.: 9.093 min  
 Delta R.T.: 0.000 min  
 Response: 486578  
 Conc: 49.35 ng/ml m



#37 AR-1262-2

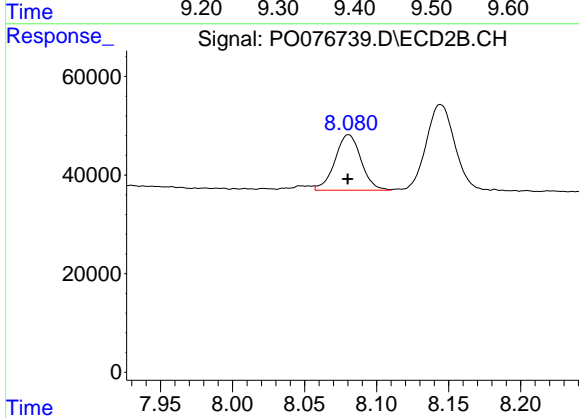
R.T.: 7.797 min  
 Delta R.T.: 0.000 min  
 Response: 321492  
 Conc: 53.56 ng/ml m



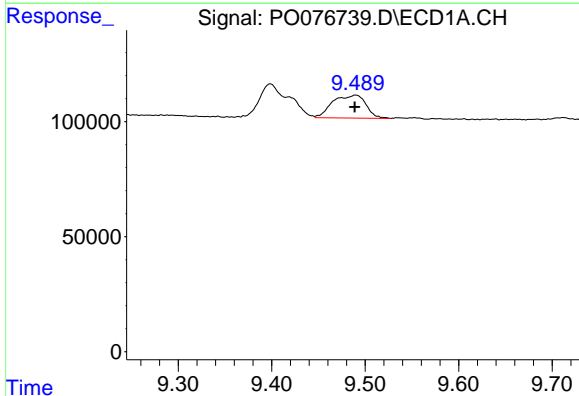
#38 AR-1262-3  
 R.T.: 9.399 min  
 Delta R.T.: 0.000 min  
 Response: 317973  
 Conc: 48.49 ng/ml

**Instrument :**  
 ECD\_O  
**ClientSampleId :**  
 AR1262ICC050

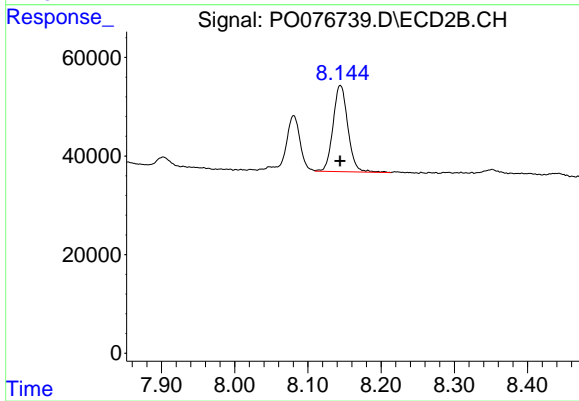
**Manual Integrations**  
**APPROVED**  
 Ankita  
 4/2/2021 11:28:18 AM



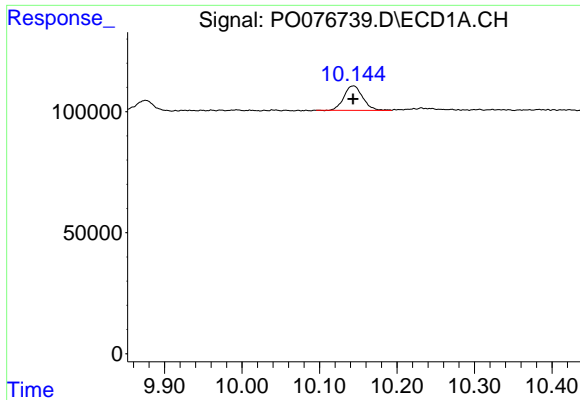
#38 AR-1262-3  
 R.T.: 8.080 min  
 Delta R.T.: 0.000 min  
 Response: 142301  
 Conc: 57.82 ng/ml m



#39 AR-1262-4  
 R.T.: 9.490 min  
 Delta R.T.: 0.001 min  
 Response: 247485  
 Conc: 48.60 ng/ml



#39 AR-1262-4  
 R.T.: 8.144 min  
 Delta R.T.: 0.000 min  
 Response: 246017  
 Conc: 55.12 ng/ml



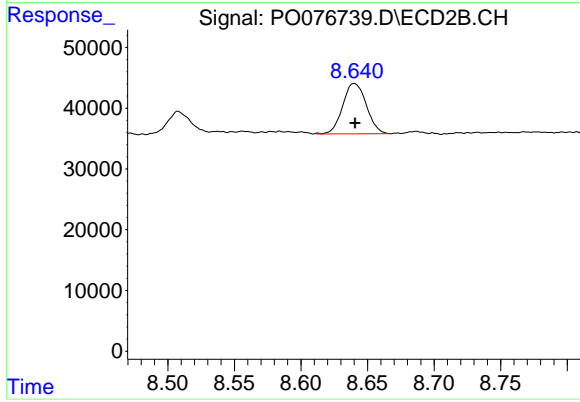
#40 AR-1262-5

R.T.: 10.144 min  
Delta R.T.: 0.000 min  
Response: 169751  
Conc: 48.11 ng/ml

Instrument :  
ECD\_O  
ClientSampled :  
AR1262ICC050

Manual Integrations  
APPROVED

Ankita  
4/2/2021 11:28:18 AM



#40 AR-1262-5

R.T.: 8.640 min  
Delta R.T.: 0.000 min  
Response: 102387  
Conc: 51.52 ng/ml