

Data Path : Z:\pestpcbsrv\HPCHEM1\ECD_0\Data\P0040122\
 Data File : P0085830.D
 Signal(s) : Signal #1: ECD1A.CH Signal #2: ECD2B.CH
 Acq On : 01 Apr 2022 20:22
 Operator : YP\AJ
 Sample : N2220-09MS
 Misc :
 ALS Vial : 21 Sample Multiplier: 1

Instrument :
 ECD_0
ClientSampleId :
 A02145MS

Manual Integrations
APPROVED

Reviewed By :Yogesh Patel 04/04/2022
 Supervised By :mohammad ahmed 04/04/2022

Integration File signal 1: autoint1.e
 Integration File signal 2: autoint2.e
 Quant Time: Apr 03 09:39:11 2022
 Quant Method : Z:\pestpcbsrv\HPCHEM1\ECD_0\methods\P0032822.M
 Quant Title : GC EXTRACTABLES
 QLast Update : Wed Mar 30 16:55:12 2022
 Response via : Initial Calibration
 Integrator: ChemStation 6890 Scale Mode: Small noise peaks clipped

Volume Inj. : 2 µl
 Signal #1 Phase : ZB-MR1 Signal #2 Phase: ZB-MR2
 Signal #1 Info : 30Mx0.32mmx 0.50µ Signal #2 Info : 30M x 0.32mm x 0.25µm

| Compound | RT#1 | RT#2 | Resp#1 | Resp#2 | ng/ml | ng/ml |
|-----------------------------|--------|-------|---------|---------|----------|---------|
| ----- | | | | | | |
| System Monitoring Compounds | | | | | | |
| 1) SA Tetrachlo... | 4.481 | 3.579 | 4518329 | 1021717 | 23.186 | 21.603 |
| 2) SA Decachlor... | 10.390 | 8.600 | 2896358 | 732130 | 22.572 | 20.852 |
| Target Compounds | | | | | | |
| 3) L1 AR-1016-1 | 5.670 | 4.668 | 3494996 | 885470 | 523.365 | 494.259 |
| 4) L1 AR-1016-2 | 5.693 | 4.686 | 5083931 | 1276335 | 502.949 | 503.294 |
| 5) L1 AR-1016-3 | 5.756 | 4.862 | 3089666 | 678853 | 509.591 | 488.090 |
| 6) L1 AR-1016-4 | 5.856 | 4.906 | 2530586 | 548055 | 518.352m | 467.671 |
| 7) L1 AR-1016-5 | 6.156 | 5.118 | 2427577 | 711248 | 534.063 | 525.068 |
| 31) L7 AR-1260-1 | 7.299 | 6.156 | 4215534 | 1316152 | 526.297 | 527.091 |
| 32) L7 AR-1260-2 | 7.559 | 6.345 | 5058406 | 1567543 | 539.117 | 515.200 |
| 33) L7 AR-1260-3 | 7.923 | 6.498 | 3198996 | 1467607 | 453.403 | 534.715 |
| 34) L7 AR-1260-4 | 8.154 | 6.973 | 3962881 | 1025796 | 503.298 | 447.512 |
| 35) L7 AR-1260-5 | 8.486 | 7.218 | 7228530 | 2359228 | 470.529 | 466.643 |

(f)=RT Delta > 1/2 Window (#)=Amounts differ by > 25% (m)=manual int.

Data Path : Z:\pestpcbsrv\HPCHEM1\ECD_O\Data\P0040122\
 Data File : P0085830.D
 Signal(s) : Signal #1: ECD1A.CH Signal #2: ECD2B.CH
 Acq On : 01 Apr 2022 20:22
 Operator : YP\AJ
 Sample : N2220-09MS
 Misc :
 ALS Vial : 21 Sample Multiplier: 1

Instrument :

ECD_O

ClientSampleId :

A02145MS

Manual Integrations

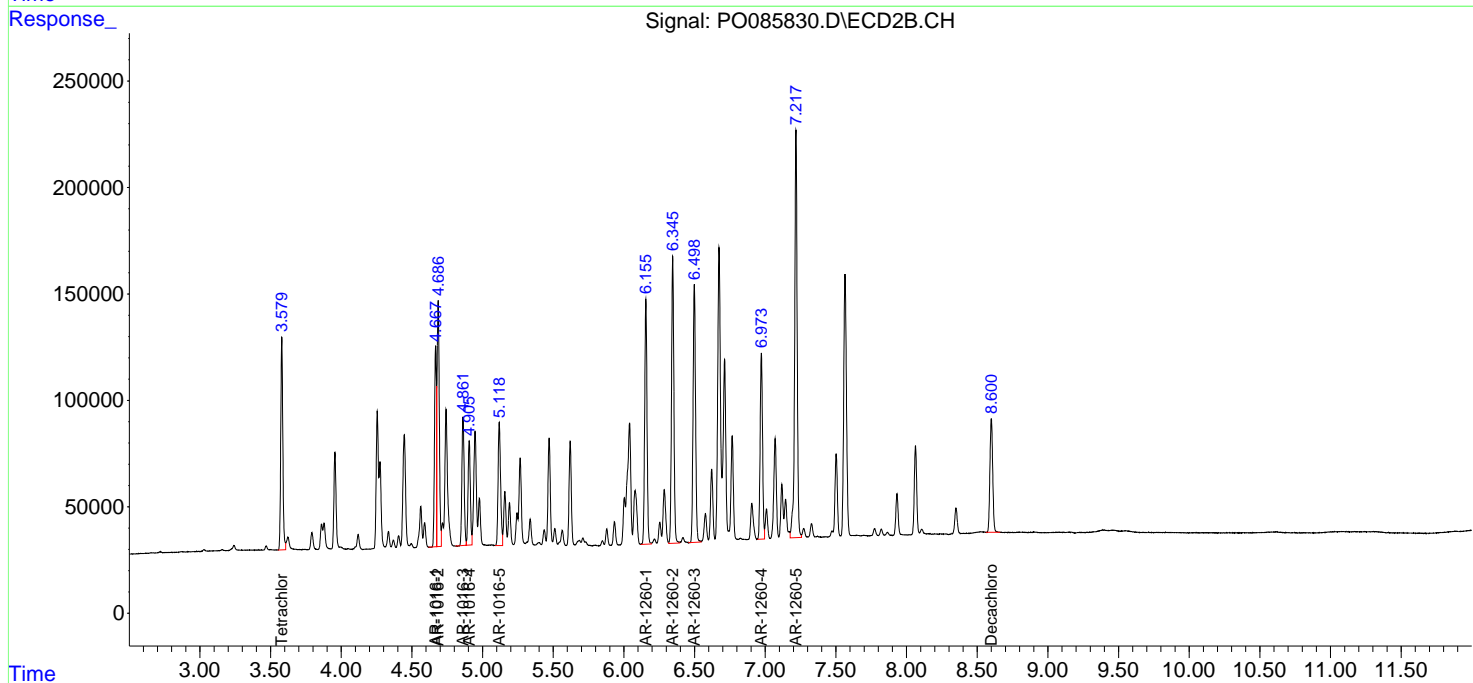
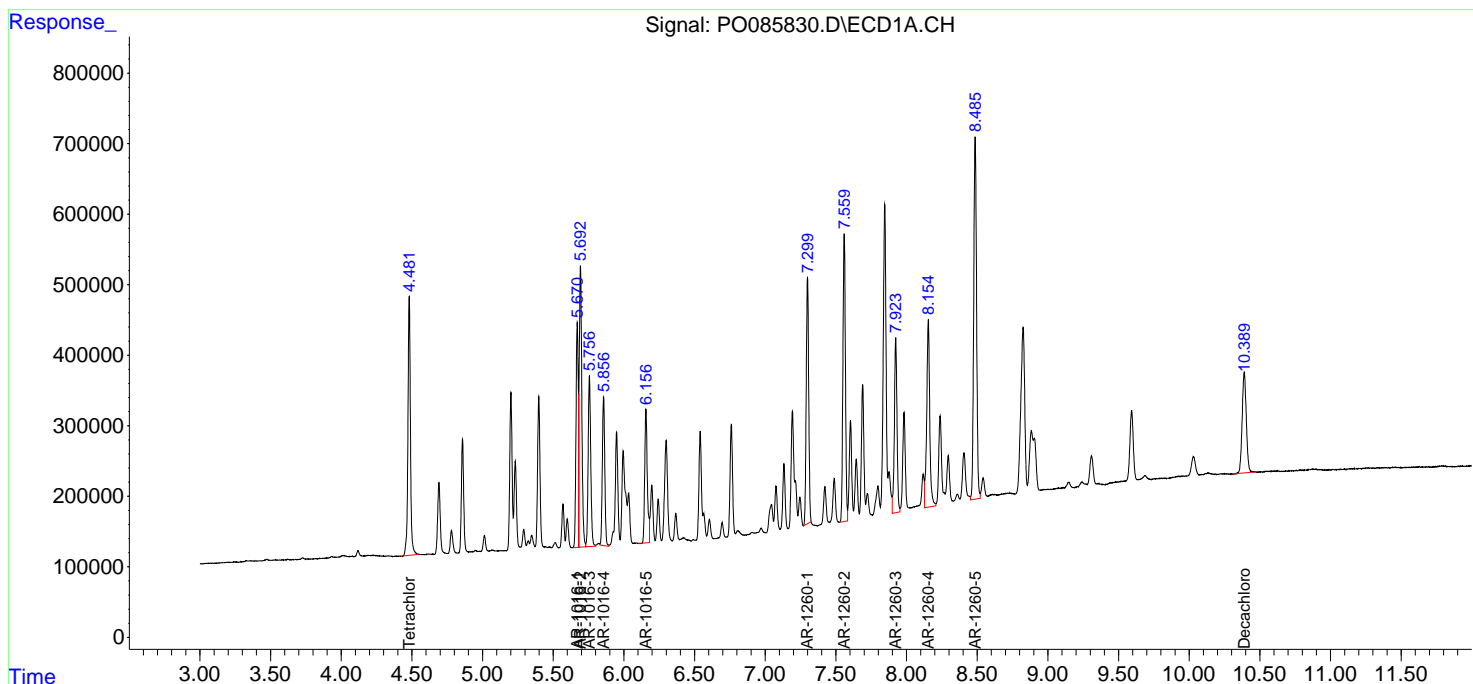
APPROVED

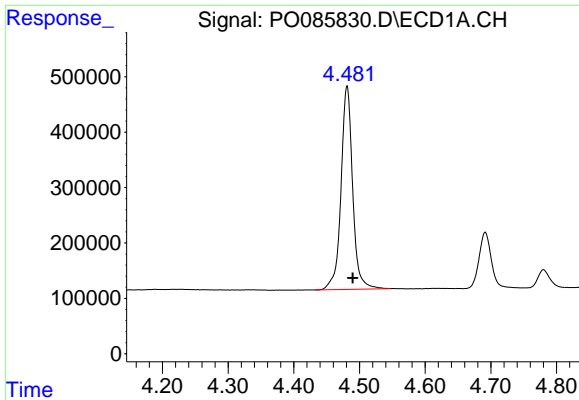
Reviewed By :Yogesh Patel 04/04/2022

Supervised By :mohammad ahmed 04/04/2022

Integration File signal 1: autoint1.e
 Integration File signal 2: autoint2.e
 Quant Time: Apr 03 09:39:11 2022
 Quant Method : Z:\pestpcbsrv\HPCHEM1\ECD_O\methods\P0032822.M
 Quant Title : GC EXTRACTABLES
 QLast Update : Wed Mar 30 16:55:12 2022
 Response via : Initial Calibration
 Integrator: ChemStation 6890 Scale Mode: Small noise peaks clipped

Volume Inj. : 2 µl
 Signal #1 Phase : ZB-MR1 Signal #2 Phase: ZB-MR2
 Signal #1 Info : 30Mx0.32mmx 0.50µ Signal #2 Info : 30M x 0.32mm x 0.25µm





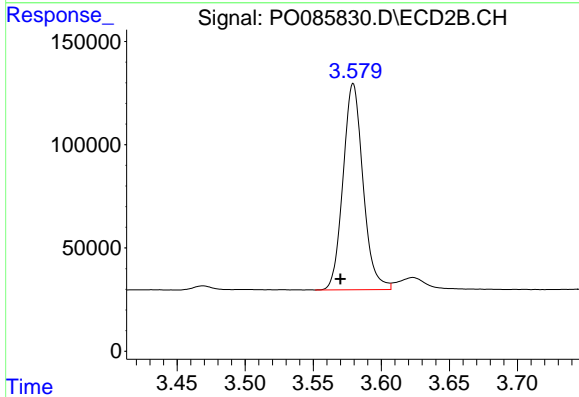
#1 Tetrachloro-m-xylene

R.T.: 4.481 min
 Delta R.T.: -0.009 min
 Response: 4518329
 Conc: 23.19 ng/ml

Instrument :
 ECD_O
 ClientSampleId :
 A02145MS

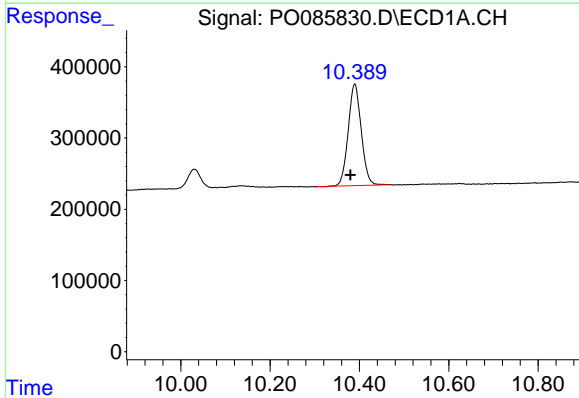
Manual Integrations
 APPROVED

Reviewed By :Yogesh Patel 04/04/2022
 Supervised By :mohammad ahmed 04/04/2022



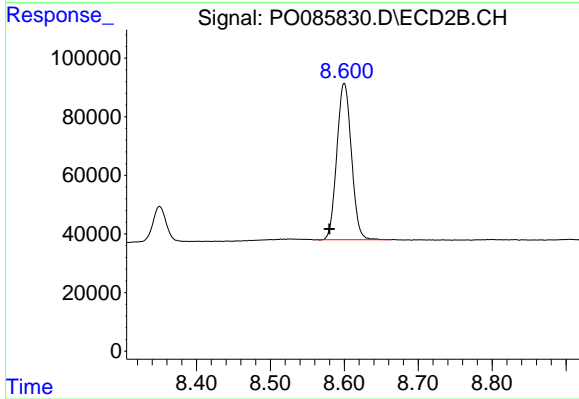
#1 Tetrachloro-m-xylene

R.T.: 3.579 min
 Delta R.T.: 0.009 min
 Response: 1021717
 Conc: 21.60 ng/ml



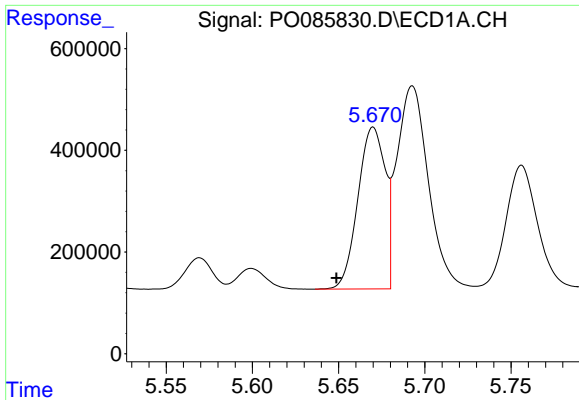
#2 Decachlorobiphenyl

R.T.: 10.390 min
 Delta R.T.: 0.010 min
 Response: 2896358
 Conc: 22.57 ng/ml



#2 Decachlorobiphenyl

R.T.: 8.600 min
 Delta R.T.: 0.020 min
 Response: 732130
 Conc: 20.85 ng/ml



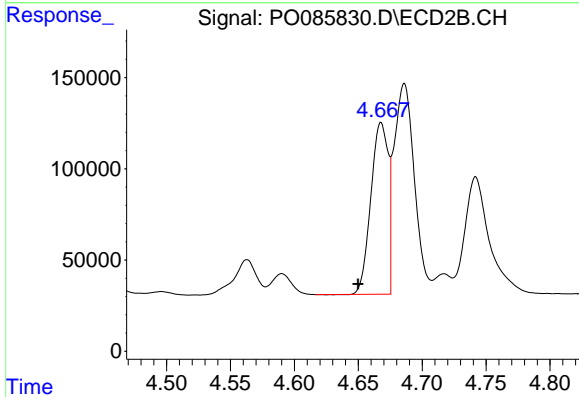
#3 AR-1016-1

R.T.: 5.670 min
 Delta R.T.: 0.021 min
 Response: 3494996
 Conc: 523.37 ng/ml

Instrument :
 ECD_O
 ClientSampleId :
 A02145MS

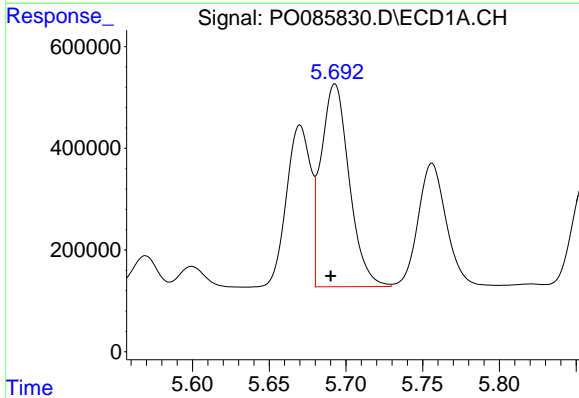
Manual Integrations
 APPROVED

Reviewed By :Yogesh Patel 04/04/2022
 Supervised By :mohammad ahmed 04/04/2022



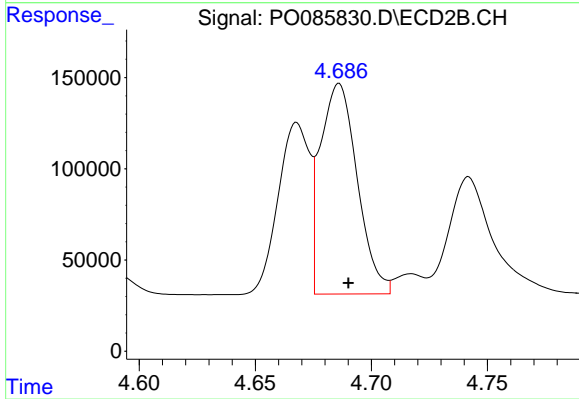
#3 AR-1016-1

R.T.: 4.668 min
 Delta R.T.: 0.018 min
 Response: 885470
 Conc: 494.26 ng/ml



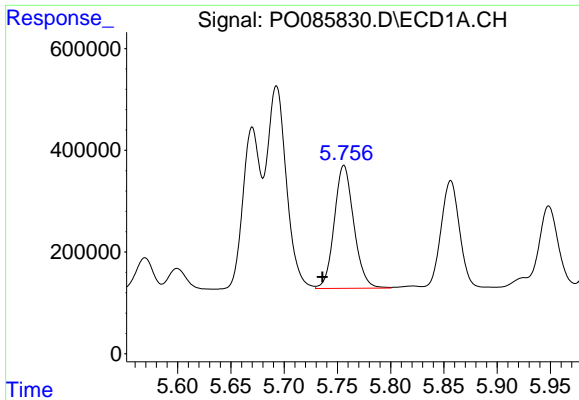
#4 AR-1016-2

R.T.: 5.693 min
 Delta R.T.: 0.003 min
 Response: 5083931
 Conc: 502.95 ng/ml



#4 AR-1016-2

R.T.: 4.686 min
 Delta R.T.: -0.004 min
 Response: 1276335
 Conc: 503.29 ng/ml



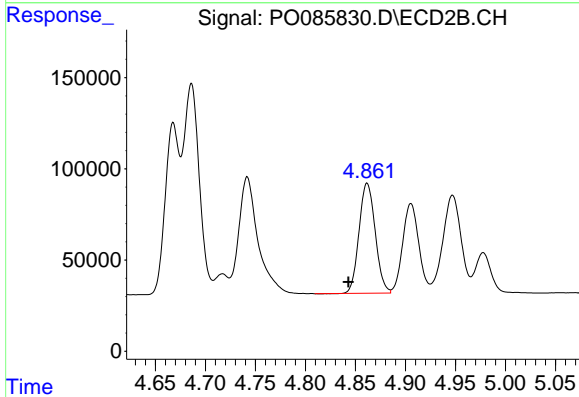
#5 AR-1016-3

R.T.: 5.756 min
 Delta R.T.: 0.020 min
 Response: 3089666
 Conc: 509.59 ng/ml

Instrument :
 ECD_O
 ClientSampleId :
 A02145MS

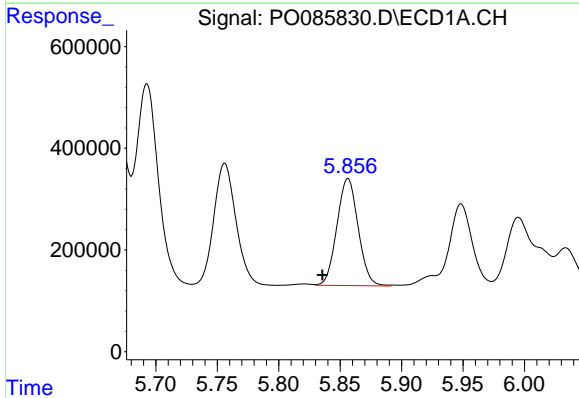
Manual Integrations
 APPROVED

Reviewed By :Yogesh Patel 04/04/2022
 Supervised By :mohammad ahmed 04/04/2022



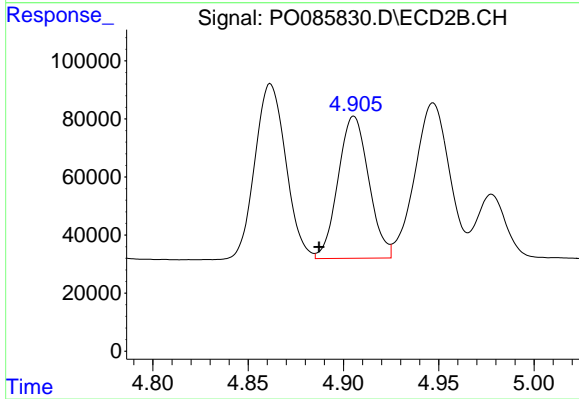
#5 AR-1016-3

R.T.: 4.862 min
 Delta R.T.: 0.019 min
 Response: 678853
 Conc: 488.09 ng/ml



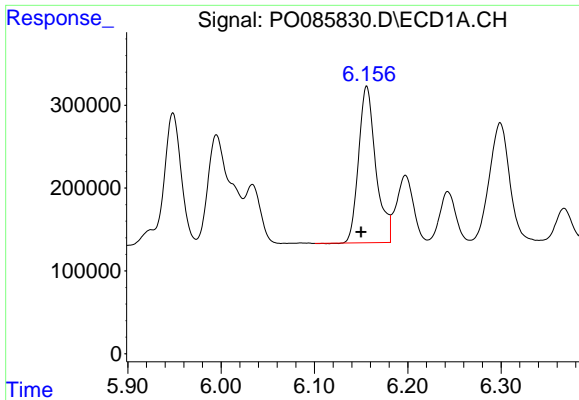
#6 AR-1016-4

R.T.: 5.856 min
 Delta R.T.: 0.020 min
 Response: 2530586
 Conc: 518.35 ng/ml m



#6 AR-1016-4

R.T.: 4.906 min
 Delta R.T.: 0.018 min
 Response: 548055
 Conc: 467.67 ng/ml



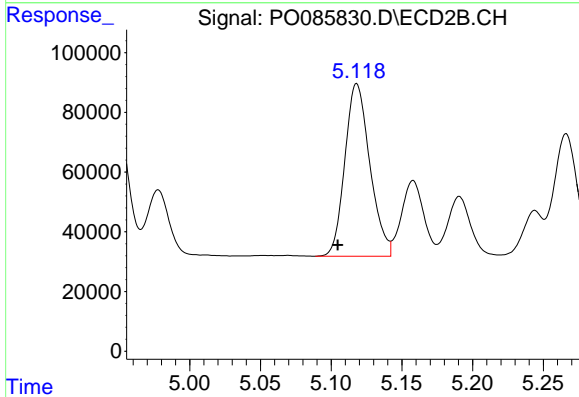
#7 AR-1016-5

R.T.: 6.156 min
 Delta R.T.: 0.006 min
 Response: 2427577
 Conc: 534.06 ng/ml

Instrument :
 ECD_O
 ClientSampleId :
 A02145MS

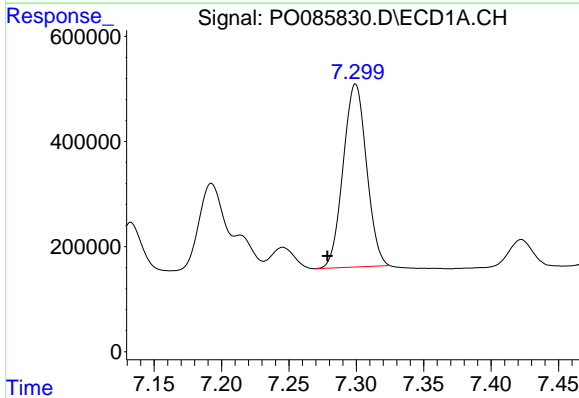
Manual Integrations
 APPROVED

Reviewed By :Yogesh Patel 04/04/2022
 Supervised By :mohammad ahmed 04/04/2022



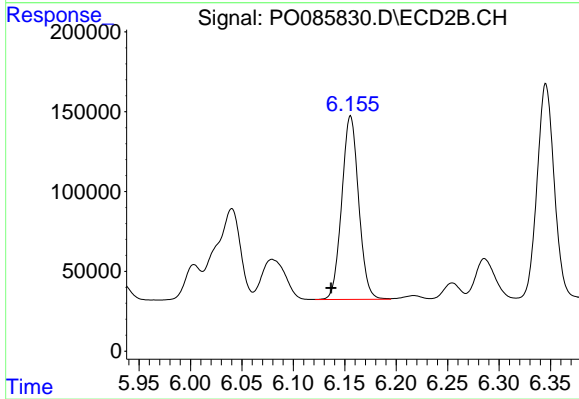
#7 AR-1016-5

R.T.: 5.118 min
 Delta R.T.: 0.013 min
 Response: 711248
 Conc: 525.07 ng/ml



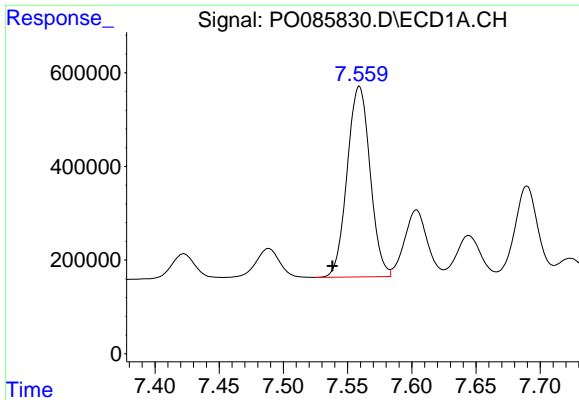
#31 AR-1260-1

R.T.: 7.299 min
 Delta R.T.: 0.021 min
 Response: 4215534
 Conc: 526.30 ng/ml



#31 AR-1260-1

R.T.: 6.156 min
 Delta R.T.: 0.019 min
 Response: 1316152
 Conc: 527.09 ng/ml



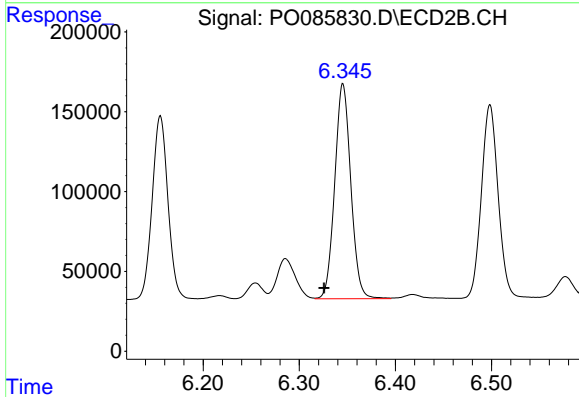
#32 AR-1260-2

R.T.: 7.559 min
 Delta R.T.: 0.021 min
 Response: 5058406
 Conc: 539.12 ng/ml

Instrument :
 ECD_O
 ClientSampleId :
 A02145MS

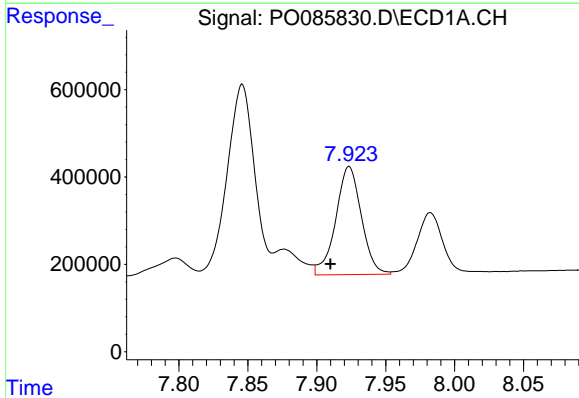
Manual Integrations
 APPROVED

Reviewed By :Yogesh Patel 04/04/2022
 Supervised By :mohammad ahmed 04/04/2022



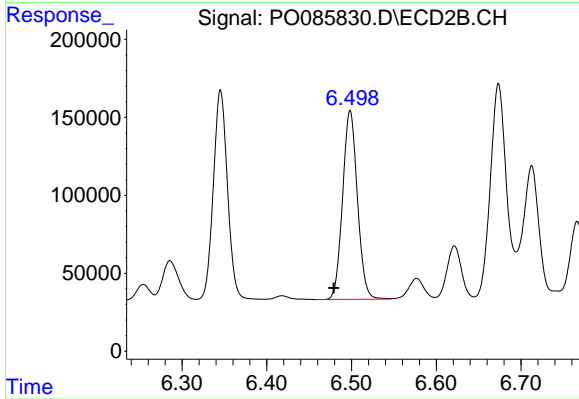
#32 AR-1260-2

R.T.: 6.345 min
 Delta R.T.: 0.019 min
 Response: 1567543
 Conc: 515.20 ng/ml



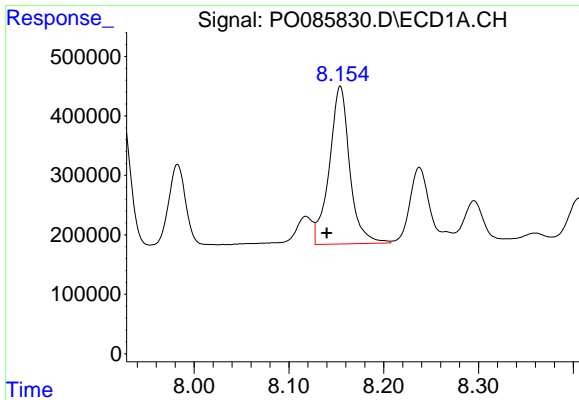
#33 AR-1260-3

R.T.: 7.923 min
 Delta R.T.: 0.013 min
 Response: 3198996
 Conc: 453.40 ng/ml



#33 AR-1260-3

R.T.: 6.498 min
 Delta R.T.: 0.019 min
 Response: 1467607
 Conc: 534.72 ng/ml



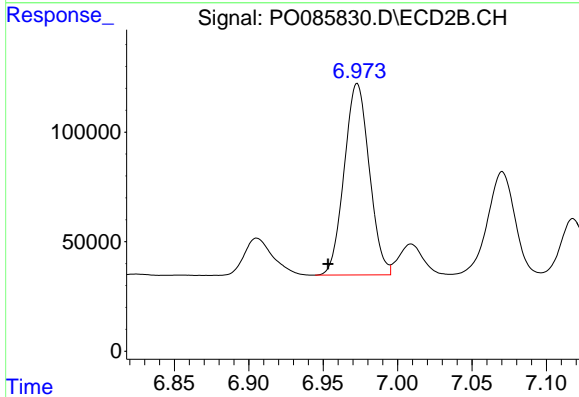
#34 AR-1260-4

R.T.: 8.154 min
 Delta R.T.: 0.014 min
 Response: 3962881
 Conc: 503.30 ng/ml

Instrument :
 ECD_O
 ClientSampleId :
 A02145MS

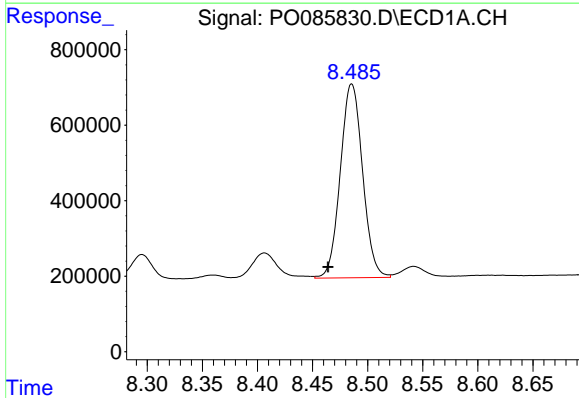
Manual Integrations
 APPROVED

Reviewed By :Yogesh Patel 04/04/2022
 Supervised By :mohammad ahmed 04/04/2022



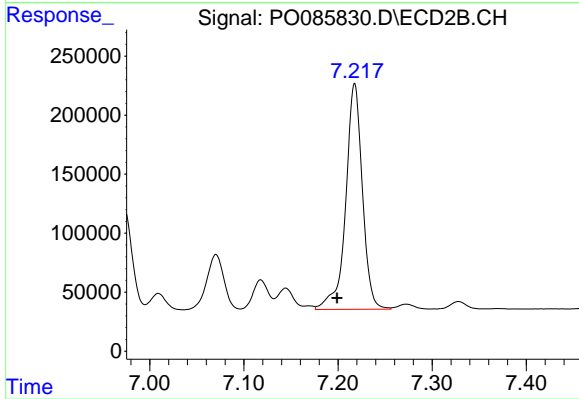
#34 AR-1260-4

R.T.: 6.973 min
 Delta R.T.: 0.020 min
 Response: 1025796
 Conc: 447.51 ng/ml



#35 AR-1260-5

R.T.: 8.486 min
 Delta R.T.: 0.021 min
 Response: 7228530
 Conc: 470.53 ng/ml



#35 AR-1260-5

R.T.: 7.218 min
 Delta R.T.: 0.019 min
 Response: 2359228
 Conc: 466.64 ng/ml