

Data Path : Z:\pestpcbsrv\HPCHEM1\ECD\_0\Data\P0040122\  
 Data File : P0085845.D  
 Signal(s) : Signal #1: ECD1A.CH Signal #2: ECD2B.CH  
 Acq On : 02 Apr 2022 2:28  
 Operator : YP\AJ  
 Sample : AR1660CCC500  
 Misc :  
 ALS Vial : 3 Sample Multiplier: 1

**Instrument :**  
 ECD\_0  
**ClientSampleId :**  
 AR1660CCC500

**Manual Integrations**  
**APPROVED**

Reviewed By :Yogesh Patel 04/04/2022  
 Supervised By :mohammad ahmed 04/04/2022

Integration File signal 1: autoint1.e  
 Integration File signal 2: autoint2.e  
 Quant Time: Apr 02 02:51:03 2022  
 Quant Method : Z:\pestpcbsrv\HPCHEM1\ECD\_0\methods\P0032822.M  
 Quant Title : GC EXTRACTABLES  
 QLast Update : Wed Mar 30 16:55:12 2022  
 Response via : Initial Calibration  
 Integrator: ChemStation 6890 Scale Mode: Small noise peaks clipped

Volume Inj. : 2 µl  
 Signal #1 Phase : ZB-MR1 Signal #2 Phase: ZB-MR2  
 Signal #1 Info : 30Mx0.32mmx 0.50µ Signal #2 Info : 30M x 0.32mm x 0.25µm

Compound	RT#1	RT#2	Resp#1	Resp#2	ng/ml	ng/ml
-----						
System Monitoring Compounds						
1) SA Tetrachlo...	4.474	3.573	10542604	2375407	54.100	50.225
2) SA Decachlor...	10.384	8.596	7114866	1696793	55.447	48.327
Target Compounds						
3) L1 AR-1016-1	5.664	4.662	3525162	874672	527.882	488.231
4) L1 AR-1016-2	5.687	4.680	5180092	1259751	512.462	496.755
5) L1 AR-1016-3	5.751	4.856	3124192	673205	515.286	484.029
6) L1 AR-1016-4	5.851	4.900	2578040	562011	528.073	479.580
7) L1 AR-1016-5	6.151	5.113	2492907	720151	548.436	531.641
31) L7 AR-1260-1	7.295	6.150	4056257	1241089	506.412	497.030
32) L7 AR-1260-2	7.554	6.341	4924060	1506114	524.799m	495.011
33) L7 AR-1260-3	7.919	6.494	3634277	1376666	515.097m	501.581
34) L7 AR-1260-4	8.149	6.968	4056596	1136718	515.200m	495.903
35) L7 AR-1260-5	8.482	7.213	8171032	2555451	531.880	505.455

(f)=RT Delta > 1/2 Window (#)=Amounts differ by > 25% (m)=manual int.

Data Path : Z:\pestpcbsrv\HPCHEM1\ECD\_O\Data\P0040122\  
 Data File : P0085845.D  
 Signal(s) : Signal #1: ECD1A.CH Signal #2: ECD2B.CH  
 Acq On : 02 Apr 2022 2:28  
 Operator : YP\AJ  
 Sample : AR1660CCC500  
 Misc :  
 ALS Vial : 3 Sample Multiplier: 1

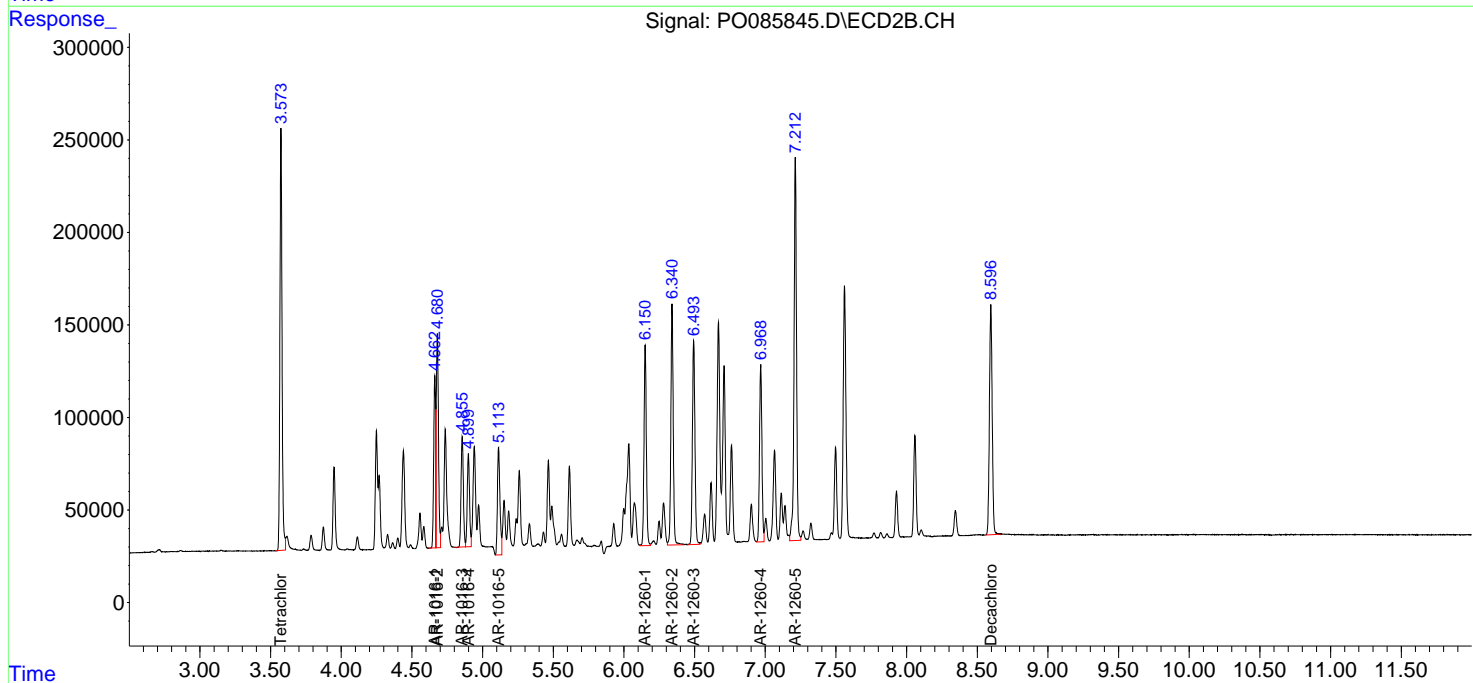
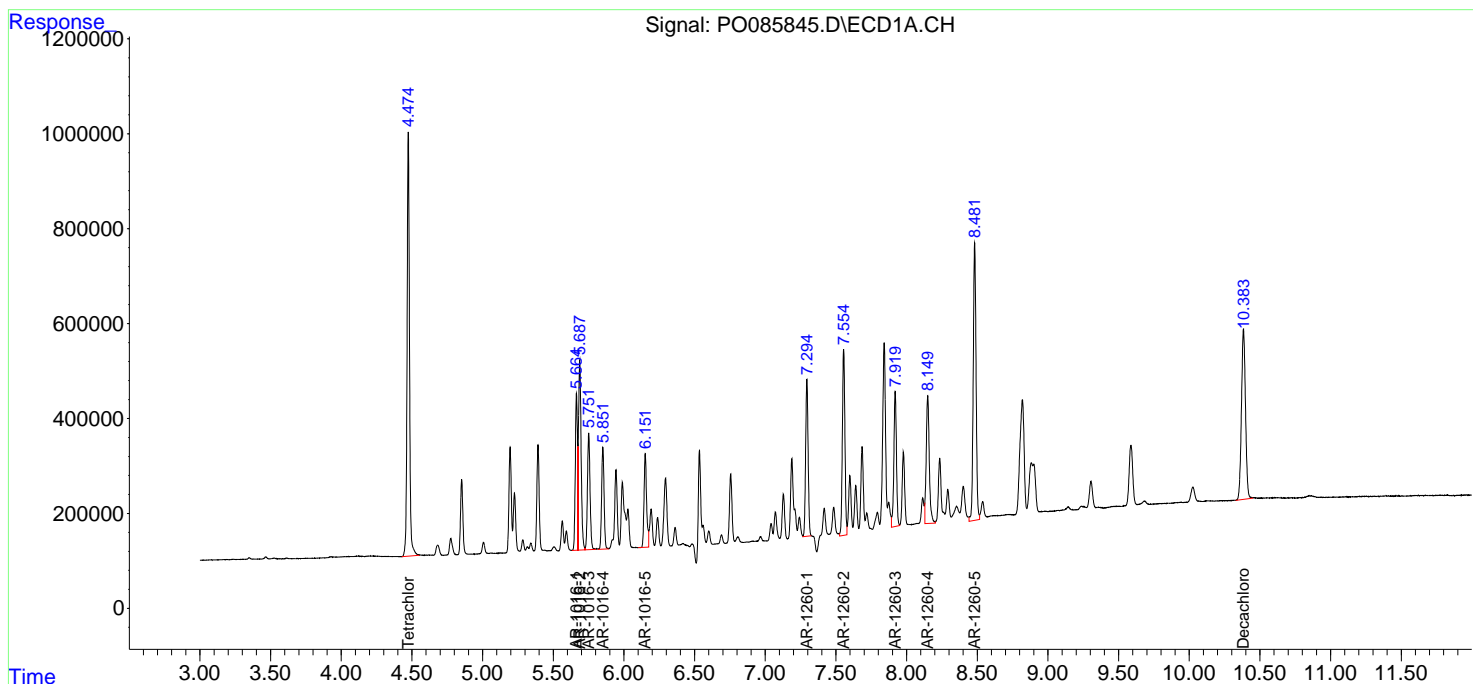
Instrument :  
 ECD\_O  
 ClientSampleId :  
 AR1660CCC500

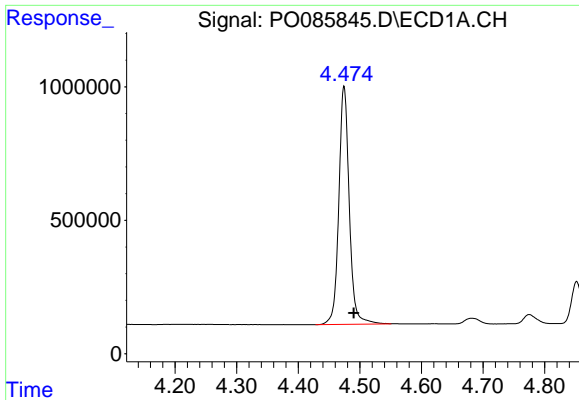
Manual Integrations  
 APPROVED

Reviewed By :Yogesh Patel 04/04/2022  
 Supervised By :mohammad ahmed 04/04/2022

Integration File signal 1: autoint1.e  
 Integration File signal 2: autoint2.e  
 Quant Time: Apr 02 02:51:03 2022  
 Quant Method : Z:\pestpcbsrv\HPCHEM1\ECD\_O\methods\P0032822.M  
 Quant Title : GC EXTRACTABLES  
 QLast Update : Wed Mar 30 16:55:12 2022  
 Response via : Initial Calibration  
 Integrator: ChemStation 6890 Scale Mode: Small noise peaks clipped

Volume Inj. : 2 µl  
 Signal #1 Phase : ZB-MR1 Signal #2 Phase: ZB-MR2  
 Signal #1 Info : 30Mx0.32mmx 0.50µ Signal #2 Info : 30M x 0.32mm x 0.25µm

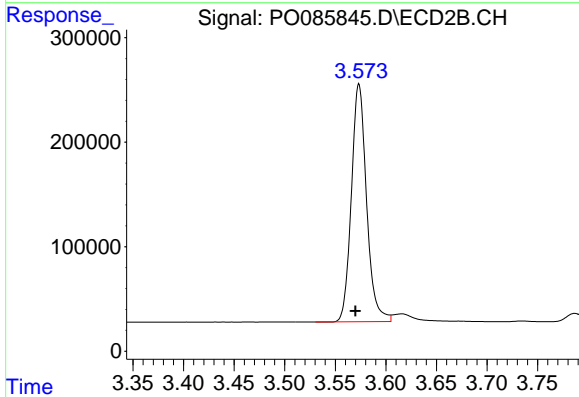




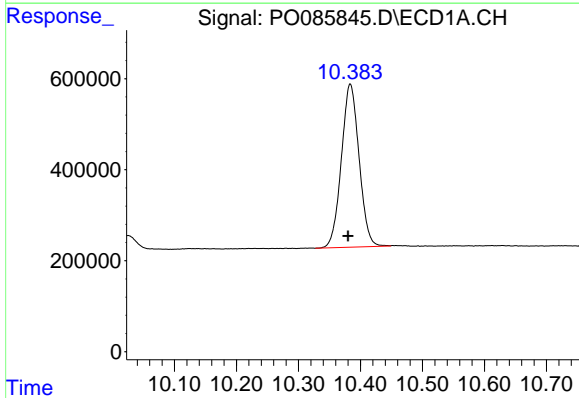
#1 Tetrachloro-m-xylene  
 R.T.: 4.474 min  
 Delta R.T.: -0.016 min  
 Response: 10542604  
 Conc: 54.10 ng/ml

Instrument :  
 ECD\_O  
 ClientSampleId :  
 AR1660CCC500

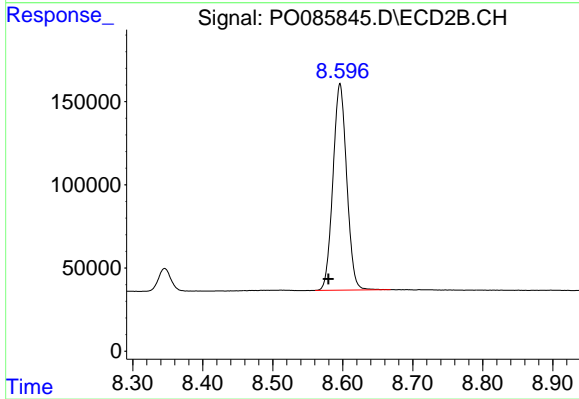
**Manual Integrations**  
**APPROVED**  
 Reviewed By :Yogesh Patel 04/04/2022  
 Supervised By :mohammad ahmed 04/04/2022



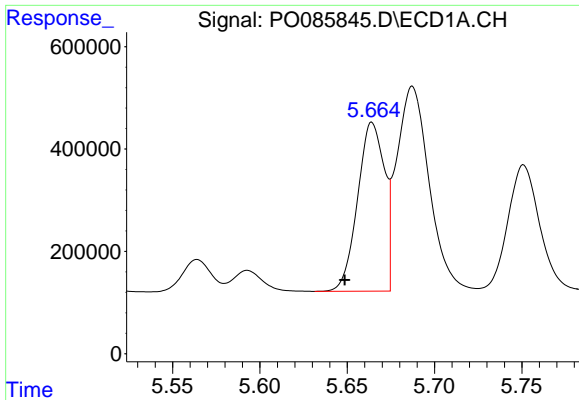
#1 Tetrachloro-m-xylene  
 R.T.: 3.573 min  
 Delta R.T.: 0.003 min  
 Response: 2375407  
 Conc: 50.23 ng/ml



#2 Decachlorobiphenyl  
 R.T.: 10.384 min  
 Delta R.T.: 0.004 min  
 Response: 7114866  
 Conc: 55.45 ng/ml



#2 Decachlorobiphenyl  
 R.T.: 8.596 min  
 Delta R.T.: 0.016 min  
 Response: 1696793  
 Conc: 48.33 ng/ml



#3 AR-1016-1

R.T.: 5.664 min  
 Delta R.T.: 0.016 min  
 Response: 3525162  
 Conc: 527.88 ng/ml

Instrument :

ECD\_O

ClientSampleId :

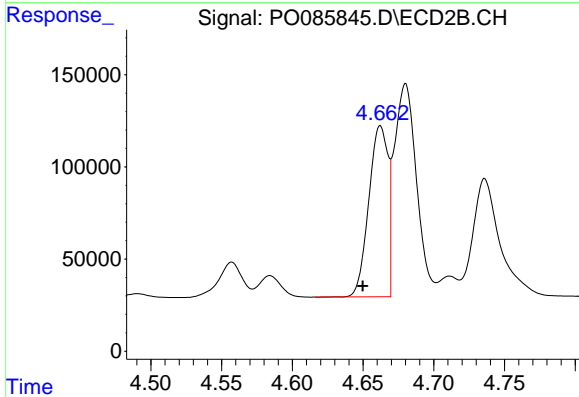
AR1660CCC500

Manual Integrations

APPROVED

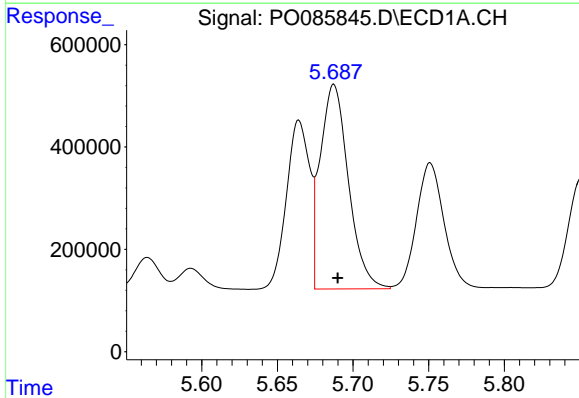
Reviewed By :Yogesh Patel 04/04/2022

Supervised By :mohammad ahmed 04/04/2022



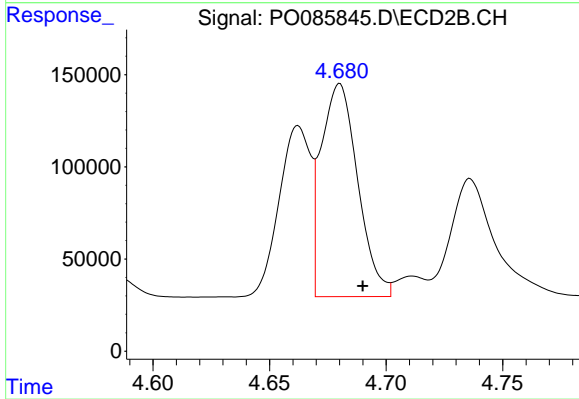
#3 AR-1016-1

R.T.: 4.662 min  
 Delta R.T.: 0.012 min  
 Response: 874672  
 Conc: 488.23 ng/ml



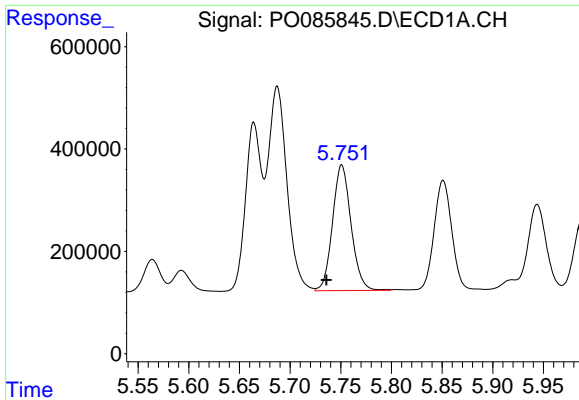
#4 AR-1016-2

R.T.: 5.687 min  
 Delta R.T.: -0.003 min  
 Response: 5180092  
 Conc: 512.46 ng/ml



#4 AR-1016-2

R.T.: 4.680 min  
 Delta R.T.: -0.010 min  
 Response: 1259751  
 Conc: 496.75 ng/ml



#5 AR-1016-3

R.T.: 5.751 min  
 Delta R.T.: 0.015 min  
 Response: 3124192  
 Conc: 515.29 ng/ml

Instrument :

ECD\_O

ClientSampleId :

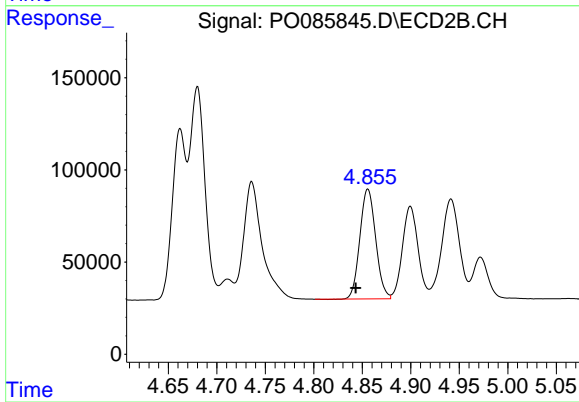
AR1660CCC500

Manual Integrations

APPROVED

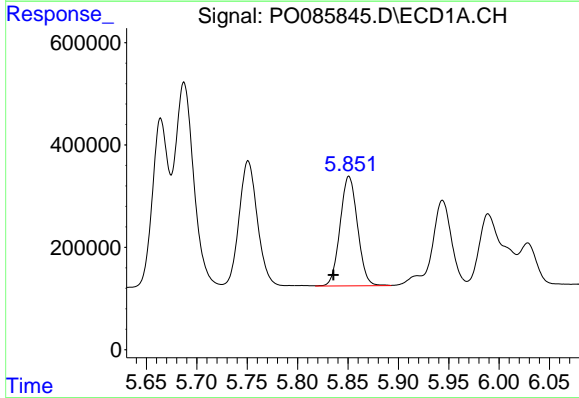
Reviewed By :Yogesh Patel 04/04/2022

Supervised By :mohammad ahmed 04/04/2022



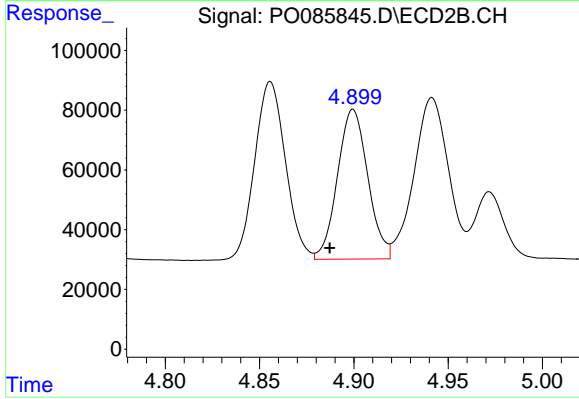
#5 AR-1016-3

R.T.: 4.856 min  
 Delta R.T.: 0.013 min  
 Response: 673205  
 Conc: 484.03 ng/ml



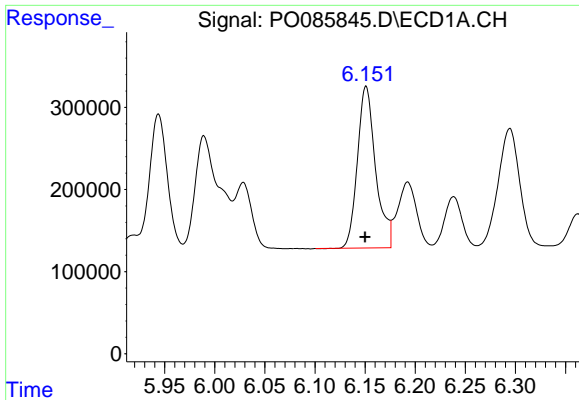
#6 AR-1016-4

R.T.: 5.851 min  
 Delta R.T.: 0.015 min  
 Response: 2578040  
 Conc: 528.07 ng/ml



#6 AR-1016-4

R.T.: 4.900 min  
 Delta R.T.: 0.012 min  
 Response: 562011  
 Conc: 479.58 ng/ml



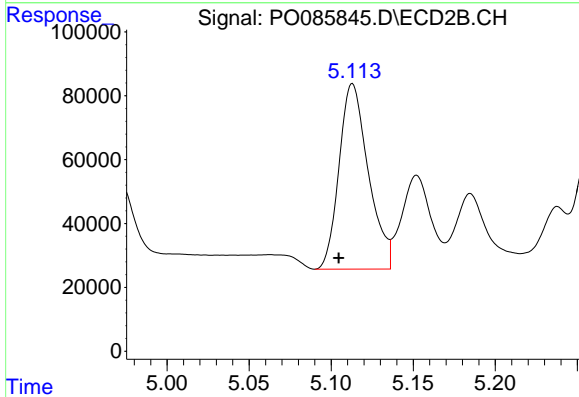
#7 AR-1016-5

R.T.: 6.151 min  
 Delta R.T.: 0.000 min  
 Response: 2492907  
 Conc: 548.44 ng/ml

Instrument :  
 ECD\_O  
 ClientSampleId :  
 AR1660CCC500

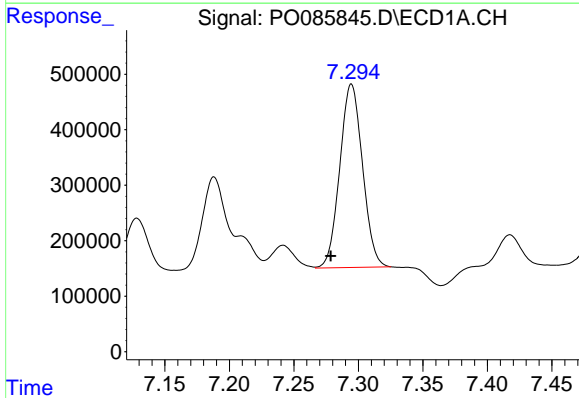
Manual Integrations  
 APPROVED

Reviewed By :Yogesh Patel 04/04/2022  
 Supervised By :mohammad ahmed 04/04/2022



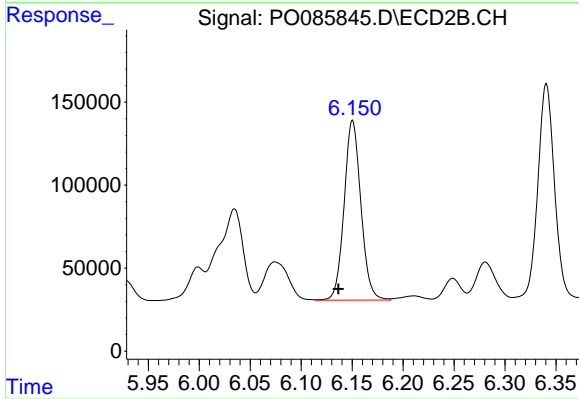
#7 AR-1016-5

R.T.: 5.113 min  
 Delta R.T.: 0.008 min  
 Response: 720151  
 Conc: 531.64 ng/ml



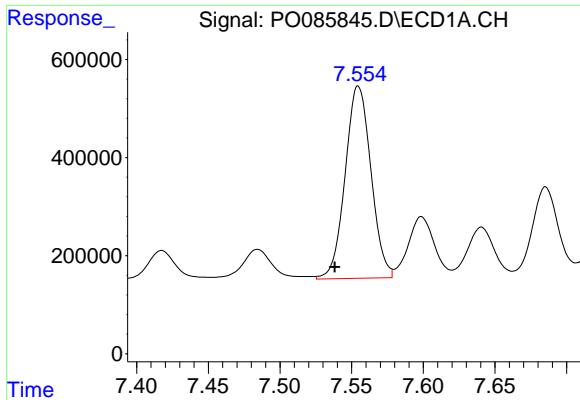
#31 AR-1260-1

R.T.: 7.295 min  
 Delta R.T.: 0.016 min  
 Response: 4056257  
 Conc: 506.41 ng/ml



#31 AR-1260-1

R.T.: 6.150 min  
 Delta R.T.: 0.014 min  
 Response: 1241089  
 Conc: 497.03 ng/ml



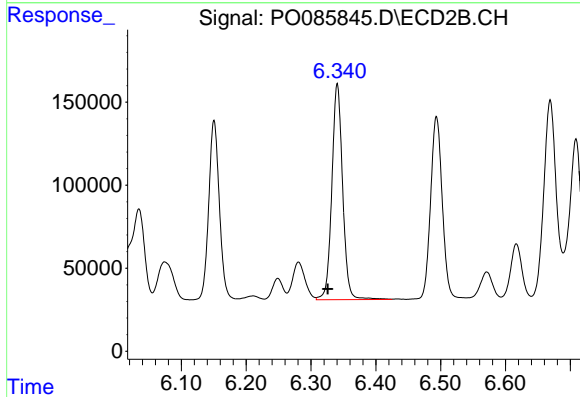
#32 AR-1260-2

R.T.: 7.554 min  
 Delta R.T.: 0.016 min  
 Response: 4924060  
 Conc: 524.80 ng/ml

Instrument :  
 ECD\_O  
 ClientSampleId :  
 AR1660CCC500

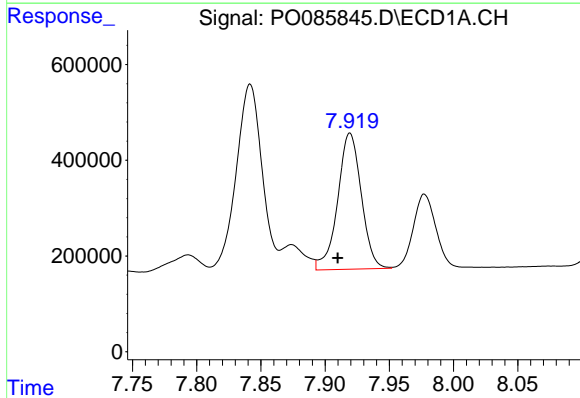
Manual Integrations  
 APPROVED

Reviewed By :Yogesh Patel 04/04/2022  
 Supervised By :mohammad ahmed 04/04/2022



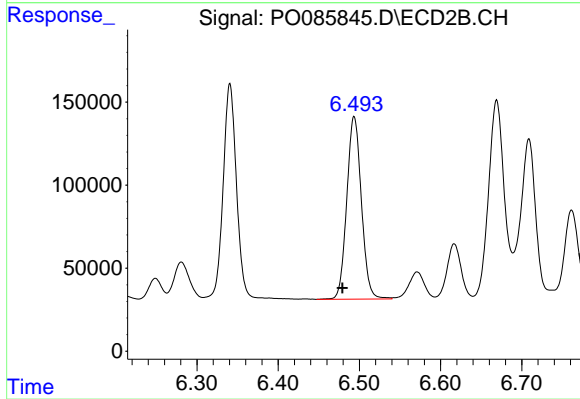
#32 AR-1260-2

R.T.: 6.341 min  
 Delta R.T.: 0.015 min  
 Response: 1506114  
 Conc: 495.01 ng/ml



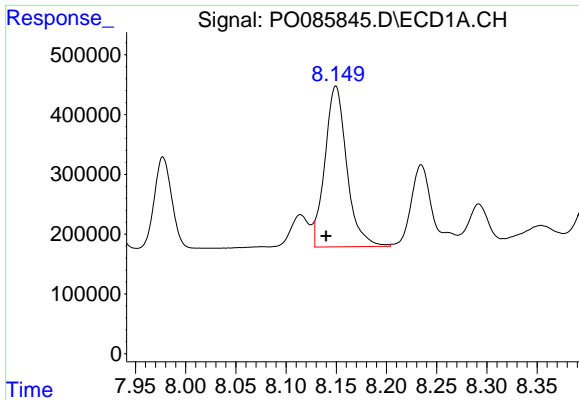
#33 AR-1260-3

R.T.: 7.919 min  
 Delta R.T.: 0.009 min  
 Response: 3634277  
 Conc: 515.10 ng/ml m



#33 AR-1260-3

R.T.: 6.494 min  
 Delta R.T.: 0.014 min  
 Response: 1376666  
 Conc: 501.58 ng/ml



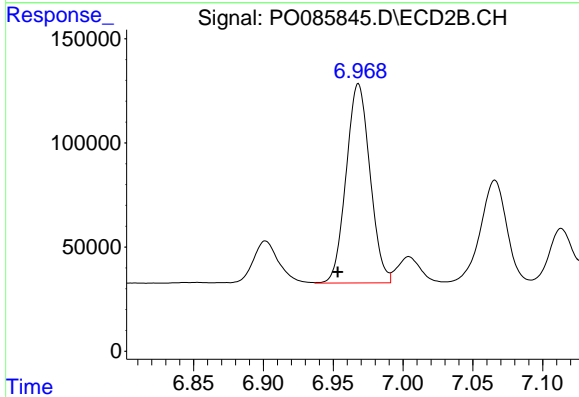
#34 AR-1260-4

R.T.: 8.149 min  
 Delta R.T.: 0.009 min  
 Response: 4056596  
 Conc: 515.20 ng/ml

Instrument :  
 ECD\_O  
 ClientSampleId :  
 AR1660CCC500

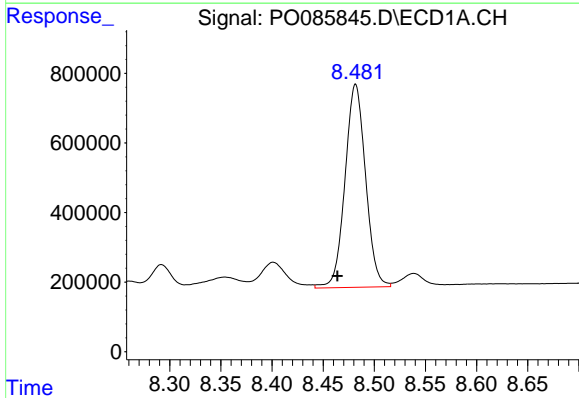
Manual Integrations  
 APPROVED

Reviewed By :Yogesh Patel 04/04/2022  
 Supervised By :mohammad ahmed 04/04/2022



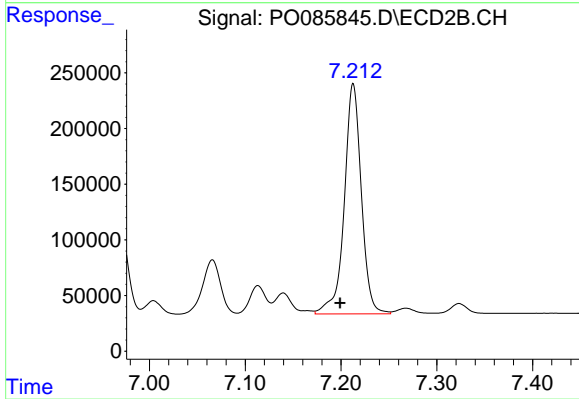
#34 AR-1260-4

R.T.: 6.968 min  
 Delta R.T.: 0.015 min  
 Response: 1136718  
 Conc: 495.90 ng/ml



#35 AR-1260-5

R.T.: 8.482 min  
 Delta R.T.: 0.018 min  
 Response: 8171032  
 Conc: 531.88 ng/ml



#35 AR-1260-5

R.T.: 7.213 min  
 Delta R.T.: 0.014 min  
 Response: 2555451  
 Conc: 505.45 ng/ml