

Data Path : Z:\pestpcbsrv\HPCHEM1\ECD\_0\Data\P0040323\  
 Data File : P0093739.D  
 Signal(s) : Signal #1: ECD1A.ch Signal #2: ECD2B.ch  
 Acq On : 03 Apr 2023 20:19  
 Operator : YP/AJ  
 Sample : AR1232ICC500  
 Misc :  
 ALS Vial : 9 Sample Multiplier: 1

Instrument :  
 ECD\_0  
 ClientSampleId :

Integration File signal 1: autoint1.e  
 Integration File signal 2: autoint2.e  
 Quant Time: Apr 04 06:09:30 2023  
 Quant Method : Z:\pestpcbsrv\HPCHEM1\ECD\_0\methods\P0040323.M  
 Quant Title : GC EXTRACTABLES  
 QLast Update : Tue Apr 04 06:02:01 2023  
 Response via : Initial Calibration  
 Integrator: ChemStation

Volume Inj. : 2 µl  
 Signal #1 Phase : ZB-MR1 Signal #2 Phase: ZB-MR2  
 Signal #1 Info : 30Mx0.32mmx 0.50µ Signal #2 Info : 30M x 0.32mm x 0.25µm

Compound	RT#1	RT#2	Resp#1	Resp#2	ng/ml	ng/ml
-----						
System Monitoring Compounds						
1) SA Tetrachlo...	4.421	3.626	197.0E6	67891304	50.000	50.000
2) SA Decachlor...	10.250	8.650	119.2E6	51713879	50.000	50.000
Target Compounds						
11) L3 AR-1232-1	4.795	4.000	43638458	15620339	500.000	500.000
12) L3 AR-1232-2	5.328	4.728	21382562	13236796	500.000	500.000
13) L3 AR-1232-3	5.621	4.904	36728061	6594575	500.000	500.000
14) L3 AR-1232-4	5.782	4.988	17211108	7105497	500.000	500.000
15) L3 AR-1232-5	5.875	5.161	15881189	7724264	500.000	500.000
36) L8 AR-1262-1	7.839	0.000	1545903	0	9.050	N.D. #
37) L8 AR-1262-2	8.389	0.000	1497905	0	6.444	N.D. #
38) L8 AR-1262-3	8.714	7.605f	126640	283177	0.773	5.660 #
39) L8 AR-1262-4	8.826	7.605	495199	283177	4.942	3.415 #
40) L8 AR-1262-5	9.469	0.000	210353	0	2.614	N.D. #

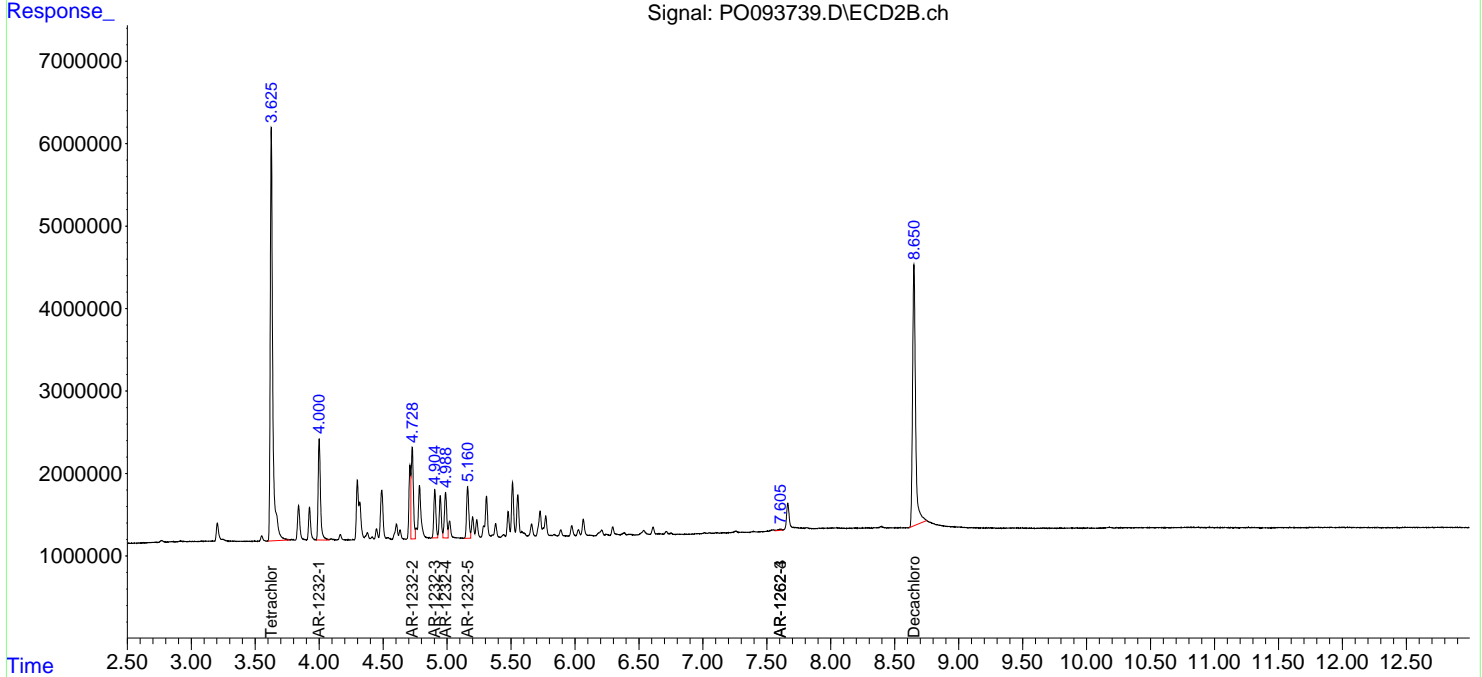
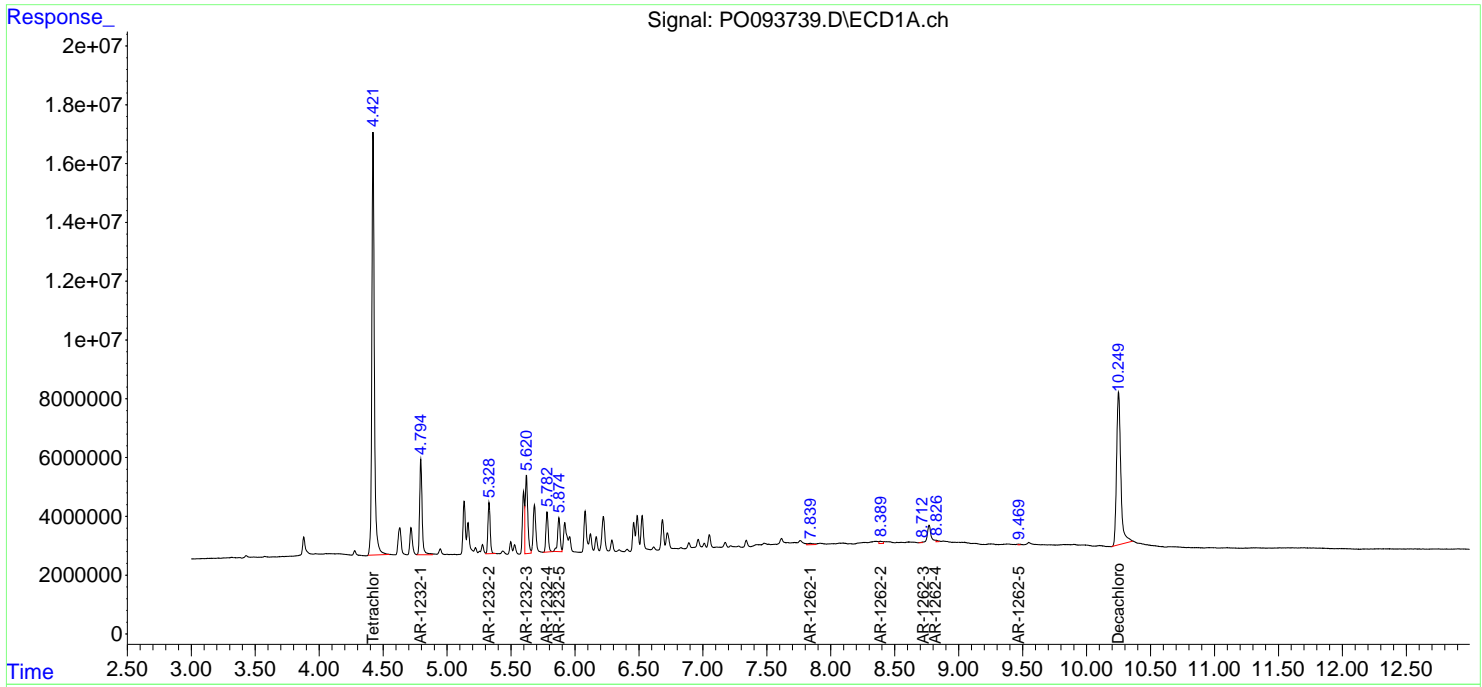
(f)=RT Delta > 1/2 Window (#)=Amounts differ by > 25% (m)=manual int.

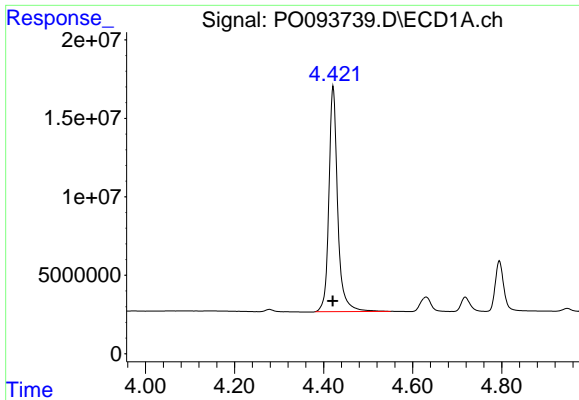
Data Path : Z:\pestpcbsrv\HPCHEM1\ECD\_O\Data\P0040323\  
 Data File : P0093739.D  
 Signal(s) : Signal #1: ECD1A.ch Signal #2: ECD2B.ch  
 Acq On : 03 Apr 2023 20:19  
 Operator : YP/AJ  
 Sample : AR1232ICC500  
 Misc :  
 ALS Vial : 9 Sample Multiplier: 1

Instrument :  
 ECD\_O  
 ClientSampleId :

Integration File signal 1: autoint1.e  
 Integration File signal 2: autoint2.e  
 Quant Time: Apr 04 06:09:30 2023  
 Quant Method : Z:\pestpcbsrv\HPCHEM1\ECD\_O\methods\P0040323.M  
 Quant Title : GC EXTRACTABLES  
 QLast Update : Tue Apr 04 06:02:01 2023  
 Response via : Initial Calibration  
 Integrator: ChemStation

Volume Inj. : 2 µl  
 Signal #1 Phase : ZB-MR1 Signal #2 Phase: ZB-MR2  
 Signal #1 Info : 30Mx0.32mmx 0.50µ Signal #2 Info : 30M x 0.32mm x 0.25µm

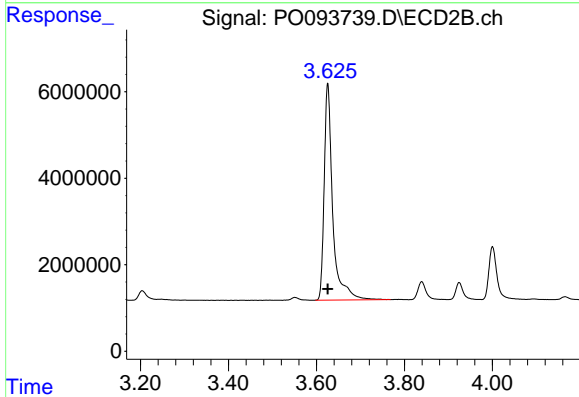




#1 Tetrachloro-m-xylene

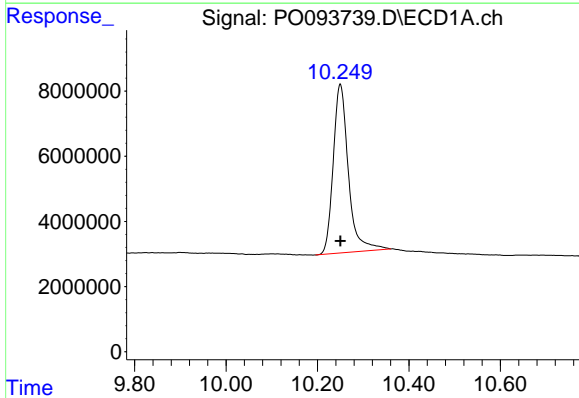
R.T.: 4.421 min  
 Delta R.T.: 0.000 min  
 Response: 196977626  
 Conc: 50.00 ng/ml

Instrument :  
 ECD\_O  
 ClientSampleId :



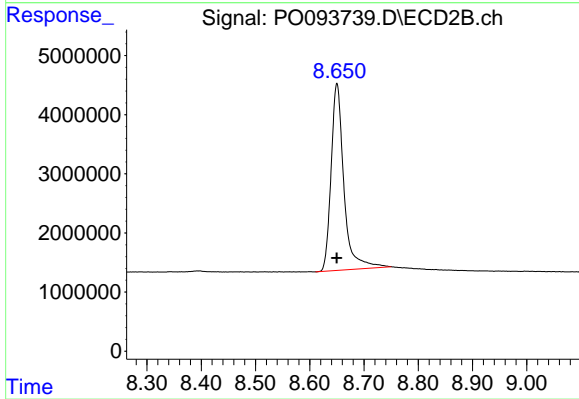
#1 Tetrachloro-m-xylene

R.T.: 3.626 min  
 Delta R.T.: 0.000 min  
 Response: 67891304  
 Conc: 50.00 ng/ml



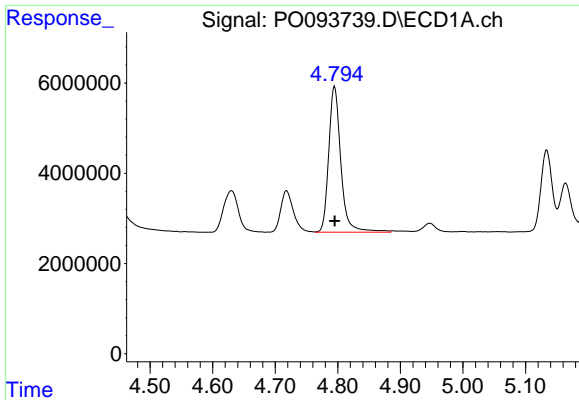
#2 Decachlorobiphenyl

R.T.: 10.250 min  
 Delta R.T.: 0.000 min  
 Response: 119237981  
 Conc: 50.00 ng/ml



#2 Decachlorobiphenyl

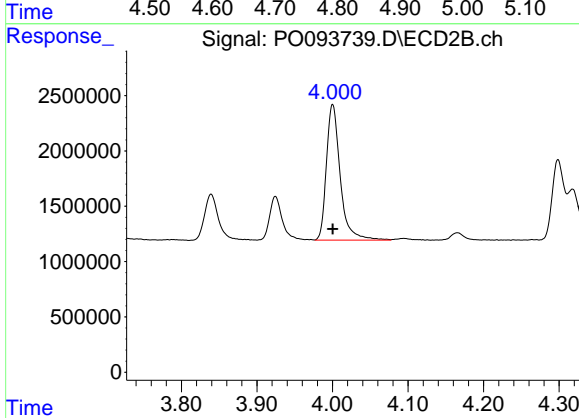
R.T.: 8.650 min  
 Delta R.T.: 0.000 min  
 Response: 51713879  
 Conc: 50.00 ng/ml



#11 AR-1232-1

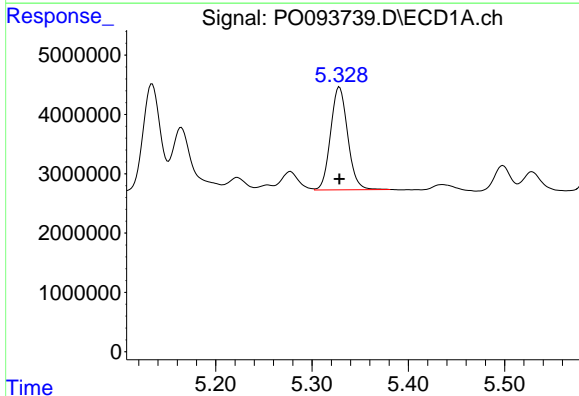
R.T.: 4.795 min  
 Delta R.T.: 0.000 min  
 Response: 43638458  
 Conc: 500.00 ng/ml

Instrument :  
 ECD\_O  
 ClientSampleId :



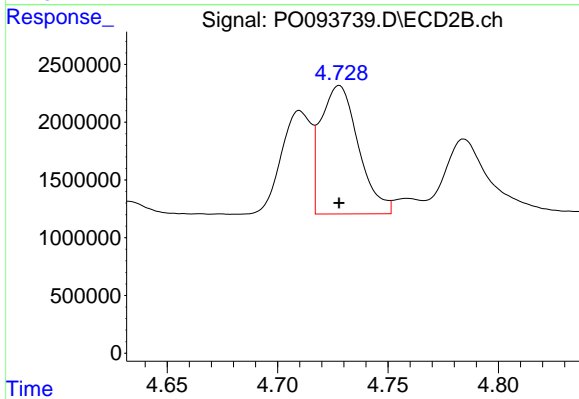
#11 AR-1232-1

R.T.: 4.000 min  
 Delta R.T.: 0.000 min  
 Response: 15620339  
 Conc: 500.00 ng/ml



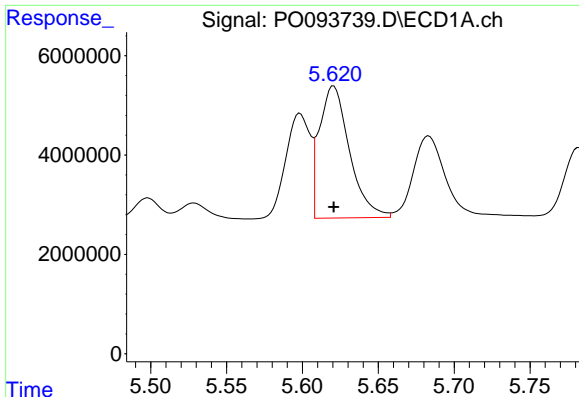
#12 AR-1232-2

R.T.: 5.328 min  
 Delta R.T.: 0.000 min  
 Response: 21382562  
 Conc: 500.00 ng/ml



#12 AR-1232-2

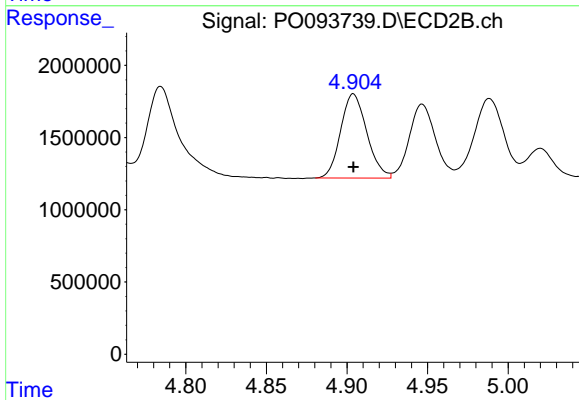
R.T.: 4.728 min  
 Delta R.T.: 0.000 min  
 Response: 13236796  
 Conc: 500.00 ng/ml



#13 AR-1232-3

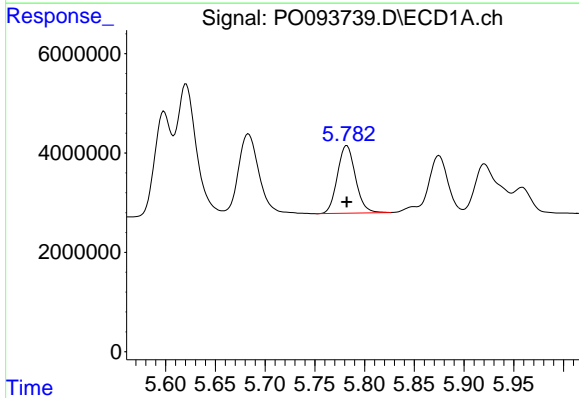
R.T.: 5.621 min  
 Delta R.T.: 0.000 min  
 Response: 36728061  
 Conc: 500.00 ng/ml

Instrument :  
 ECD\_O  
 ClientSampleId :



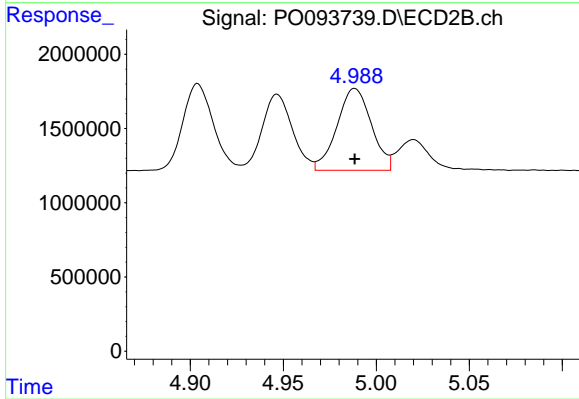
#13 AR-1232-3

R.T.: 4.904 min  
 Delta R.T.: 0.000 min  
 Response: 6594575  
 Conc: 500.00 ng/ml



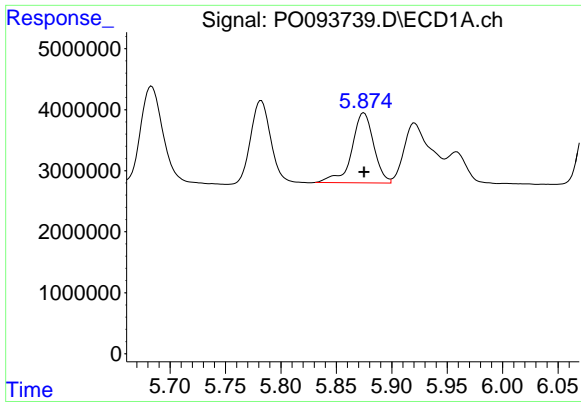
#14 AR-1232-4

R.T.: 5.782 min  
 Delta R.T.: 0.000 min  
 Response: 17211108  
 Conc: 500.00 ng/ml



#14 AR-1232-4

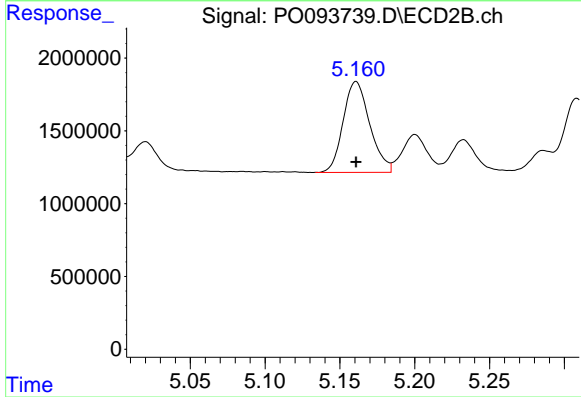
R.T.: 4.988 min  
 Delta R.T.: 0.000 min  
 Response: 7105497  
 Conc: 500.00 ng/ml



#15 AR-1232-5

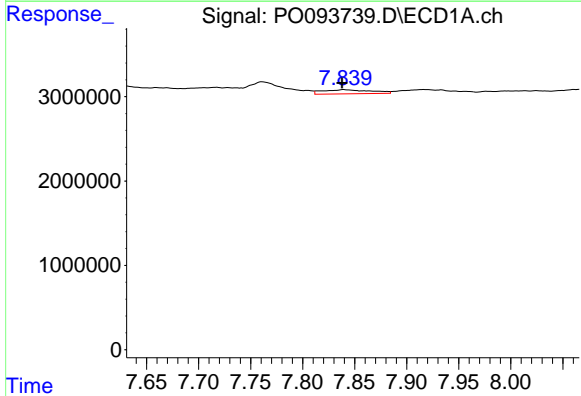
R.T.: 5.875 min  
 Delta R.T.: 0.000 min  
 Response: 15881189  
 Conc: 500.00 ng/ml

Instrument :  
 ECD\_O  
 ClientSampleId :



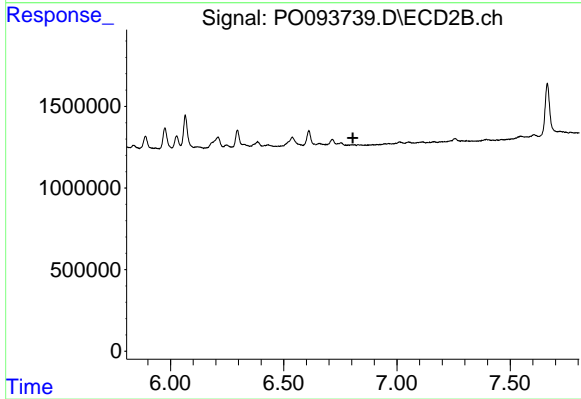
#15 AR-1232-5

R.T.: 5.161 min  
 Delta R.T.: 0.000 min  
 Response: 7724264  
 Conc: 500.00 ng/ml



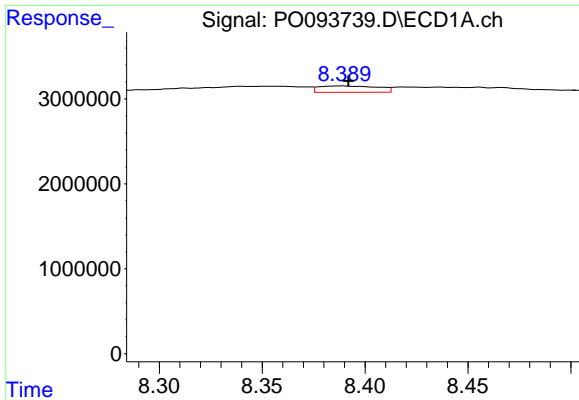
#36 AR-1262-1

R.T.: 7.839 min  
 Delta R.T.: 0.001 min  
 Response: 1545903  
 Conc: 9.05 ng/ml



#36 AR-1262-1

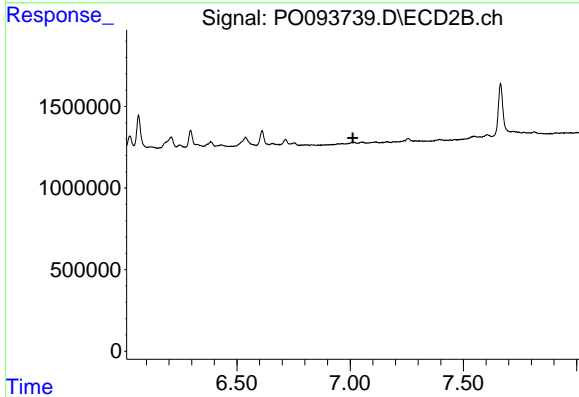
R.T.: 0.000 min  
 Exp R.T. : 6.805 min  
 Response: 0  
 Conc: N.D.



#37 AR-1262-2

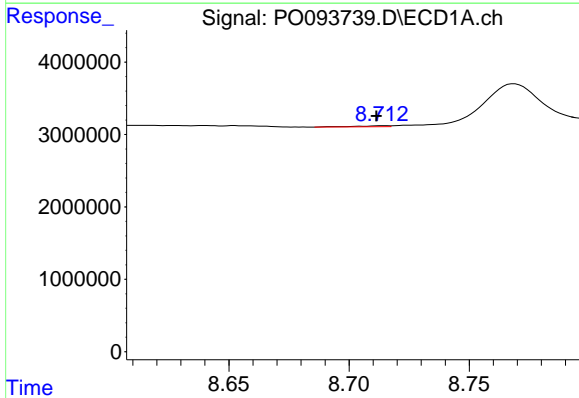
R.T.: 8.389 min  
 Delta R.T.: -0.003 min  
 Response: 1497905  
 Conc: 6.44 ng/ml

Instrument :  
 ECD\_O  
 ClientSampleId :



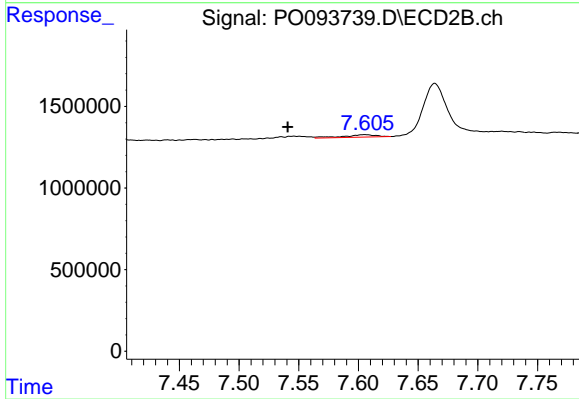
#37 AR-1262-2

R.T.: 0.000 min  
 Exp R.T. : 7.012 min  
 Response: 0  
 Conc: N.D.



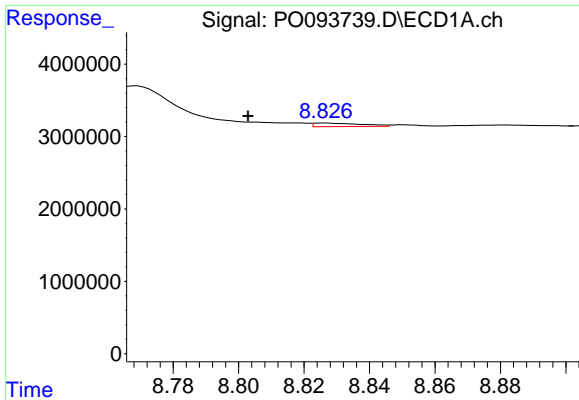
#38 AR-1262-3

R.T.: 8.714 min  
 Delta R.T.: 0.003 min  
 Response: 126640  
 Conc: 0.77 ng/ml



#38 AR-1262-3

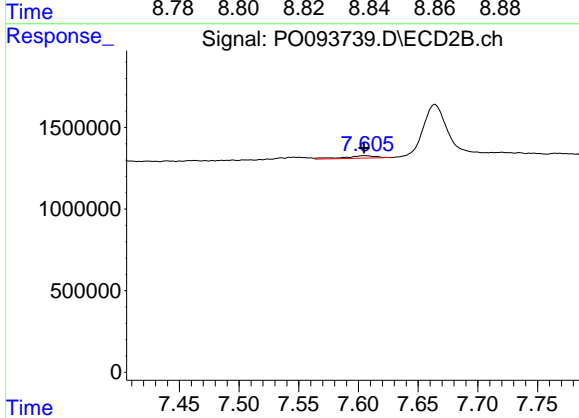
R.T.: 7.605 min  
 Delta R.T.: 0.065 min  
 Response: 283177  
 Conc: 5.66 ng/ml



#39 AR-1262-4

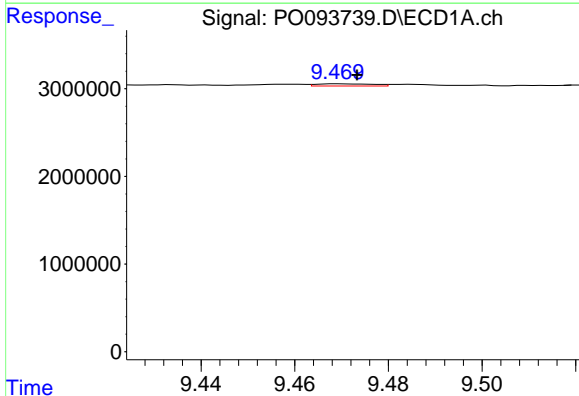
R.T.: 8.826 min  
 Delta R.T.: 0.023 min  
 Response: 495199  
 Conc: 4.94 ng/ml

Instrument :  
 ECD\_O  
 ClientSampleId :



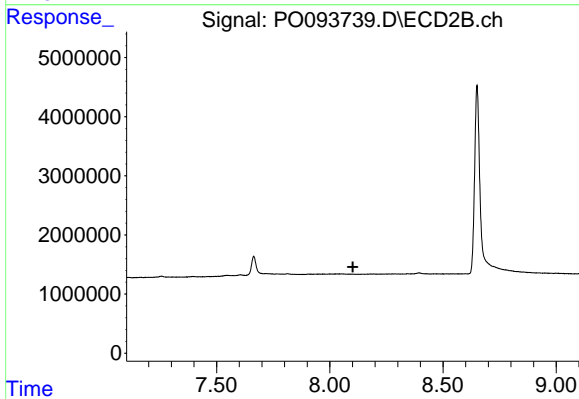
#39 AR-1262-4

R.T.: 7.605 min  
 Delta R.T.: 0.000 min  
 Response: 283177  
 Conc: 3.41 ng/ml



#40 AR-1262-5

R.T.: 9.469 min  
 Delta R.T.: -0.004 min  
 Response: 210353  
 Conc: 2.61 ng/ml



#40 AR-1262-5

R.T.: 0.000 min  
 Exp R.T. : 8.102 min  
 Response: 0  
 Conc: N.D.