

Data Path : Z:\pestpcbsrv\HPCHEM1\ECD_0\Data\P0040323\
 Data File : P0093749.D
 Signal(s) : Signal #1: ECD1A.ch Signal #2: ECD2B.ch
 Acq On : 03 Apr 2023 23:10
 Operator : YP/AJ
 Sample : AR1248ICCO50
 Misc :
 ALS Vial : 19 Sample Multiplier: 1

Instrument :
 ECD_0
 ClientSampleId :
 AR1248ICCO50

Integration File signal 1: autoint1.e
 Integration File signal 2: autoint2.e
 Quant Time: Apr 04 05:09:14 2023
 Quant Method : Z:\pestpcbsrv\HPCHEM1\ECD_0\methods\P0040323.M
 Quant Title : GC EXTRACTABLES
 QLast Update : Tue Apr 04 04:56:20 2023
 Response via : Initial Calibration
 Integrator: ChemStation

Volume Inj. : 2 µl
 Signal #1 Phase : ZB-MR1 Signal #2 Phase: ZB-MR2
 Signal #1 Info : 30Mx0.32mmx 0.50µ Signal #2 Info : 30M x 0.32mm x 0.25µm

Compound	RT#1	RT#2	Resp#1	Resp#2	ng/ml	ng/ml

System Monitoring Compounds						
1) SA Tetrachlo...	4.420	3.625	17915022	6097244	4.707	4.677
2) SA Decachlor...	10.247	8.648	10583205	5233347	4.500	5.046
Target Compounds						
21) L5 AR-1248-1	5.597	4.708	3569846	1154671	53.058	48.411
22) L5 AR-1248-2	5.873	4.946	5501510	2028923	50.294	50.936
23) L5 AR-1248-3	6.079	4.988	6301155	2125330	52.196	50.919
24) L5 AR-1248-4	6.486	5.159	5562854	2340714	51.797	49.777
25) L5 AR-1248-5	6.525	5.552	5944320	1768593	51.234	47.372

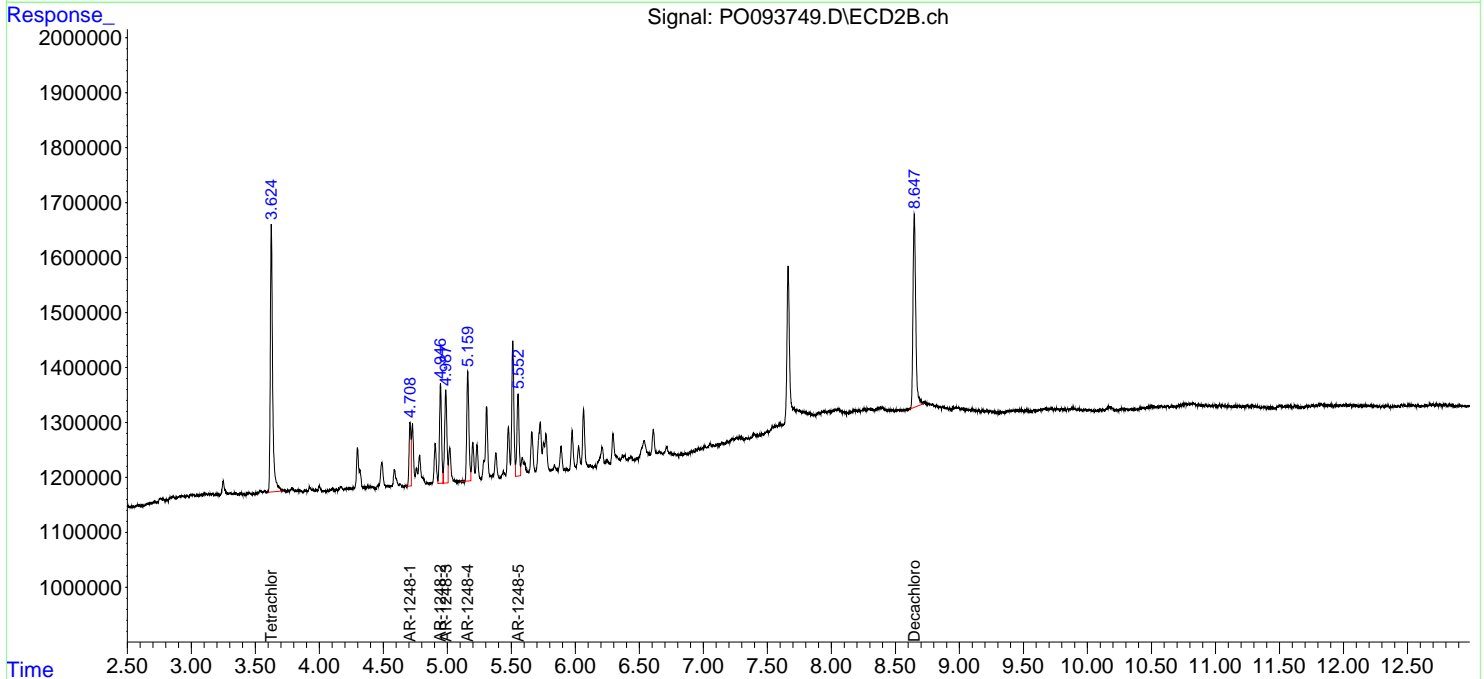
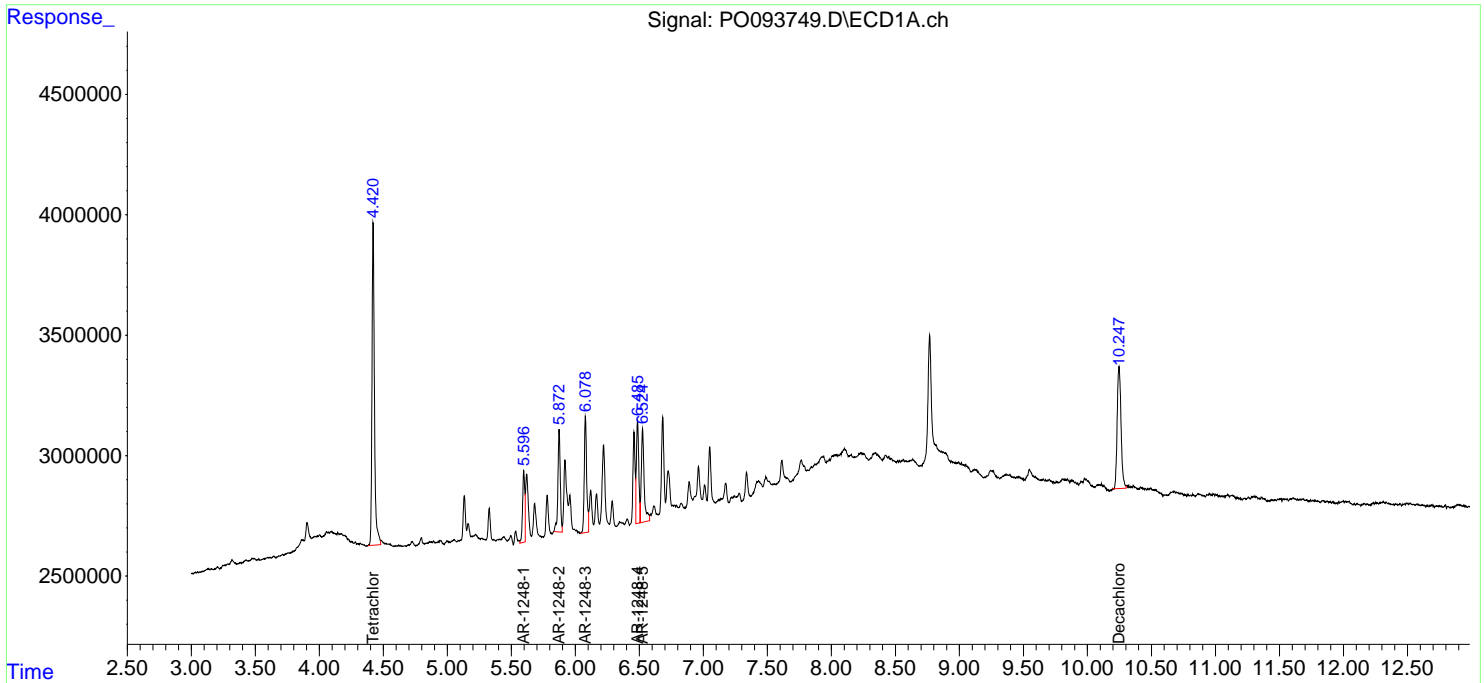
(f)=RT Delta > 1/2 Window (#)=Amounts differ by > 25% (m)=manual int.

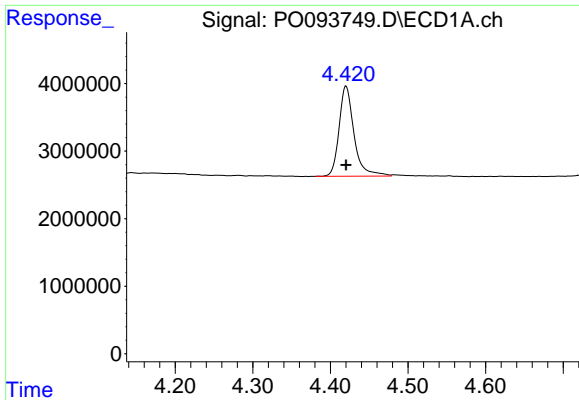
Data Path : Z:\pestpcbsrv\HPCHEM1\ECD_O\Data\P0040323\
 Data File : P0093749.D
 Signal(s) : Signal #1: ECD1A.ch Signal #2: ECD2B.ch
 Acq On : 03 Apr 2023 23:10
 Operator : YP/AJ
 Sample : AR1248ICC050
 Misc :
 ALS Vial : 19 Sample Multiplier: 1

Instrument :
 ECD_O
 ClientSampleId :
 AR1248ICC050

Integration File signal 1: autoint1.e
 Integration File signal 2: autoint2.e
 Quant Time: Apr 04 05:09:14 2023
 Quant Method : Z:\pestpcbsrv\HPCHEM1\ECD_O\methods\P0040323.M
 Quant Title : GC EXTRACTABLES
 QLast Update : Tue Apr 04 04:56:20 2023
 Response via : Initial Calibration
 Integrator: ChemStation

Volume Inj. : 2 µl
 Signal #1 Phase : ZB-MR1 Signal #2 Phase: ZB-MR2
 Signal #1 Info : 30Mx0.32mmx 0.50µ Signal #2 Info : 30M x 0.32mm x 0.25µm

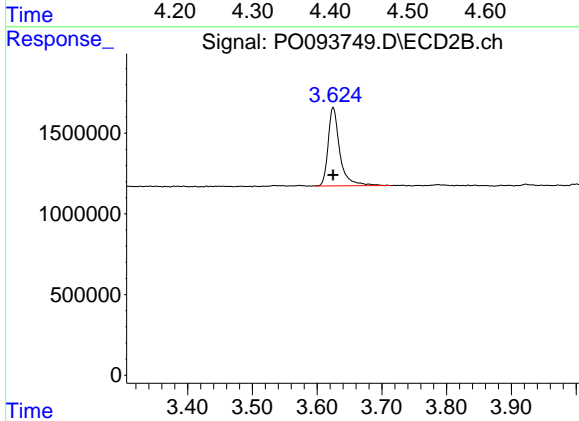




#1 Tetrachloro-m-xylene

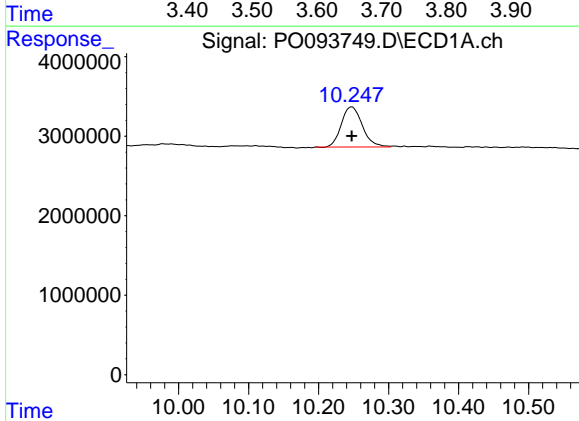
R.T.: 4.420 min
 Delta R.T.: 0.000 min
 Response: 17915022
 Conc: 4.71 ng/ml

Instrument :
 ECD_O
 ClientSampleId :
 AR1248ICCO50



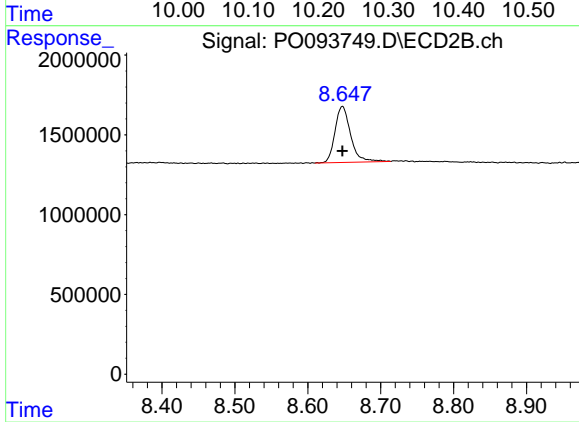
#1 Tetrachloro-m-xylene

R.T.: 3.625 min
 Delta R.T.: 0.000 min
 Response: 6097244
 Conc: 4.68 ng/ml



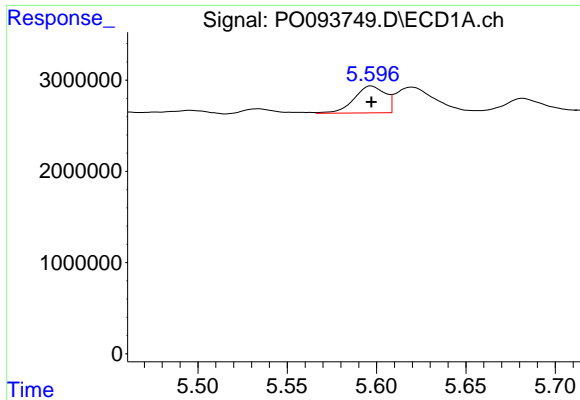
#2 Decachlorobiphenyl

R.T.: 10.247 min
 Delta R.T.: 0.000 min
 Response: 10583205
 Conc: 4.50 ng/ml



#2 Decachlorobiphenyl

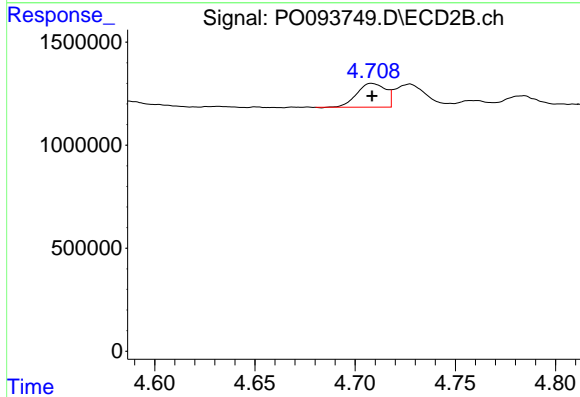
R.T.: 8.648 min
 Delta R.T.: 0.000 min
 Response: 5233347
 Conc: 5.05 ng/ml



#21 AR-1248-1

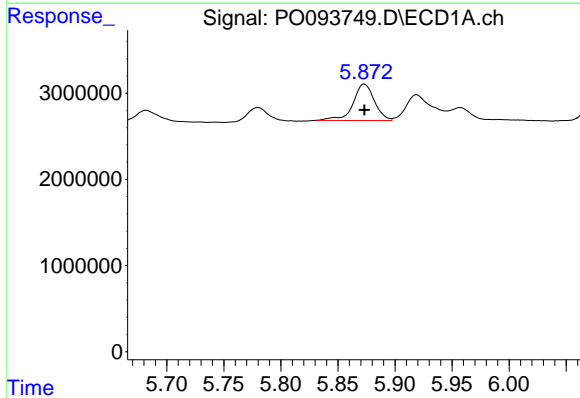
R.T.: 5.597 min
 Delta R.T.: 0.000 min
 Response: 3569846
 Conc: 53.06 ng/ml

Instrument :
 ECD_O
 ClientSampleId :
 AR1248ICC050



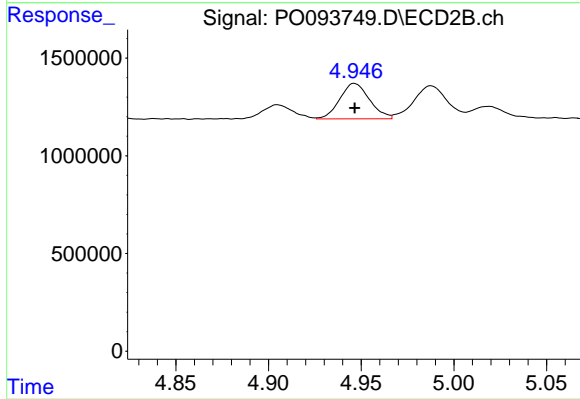
#21 AR-1248-1

R.T.: 4.708 min
 Delta R.T.: 0.000 min
 Response: 1154671
 Conc: 48.41 ng/ml



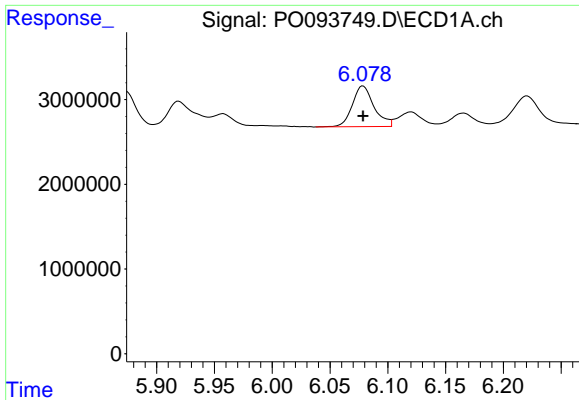
#22 AR-1248-2

R.T.: 5.873 min
 Delta R.T.: 0.000 min
 Response: 5501510
 Conc: 50.29 ng/ml



#22 AR-1248-2

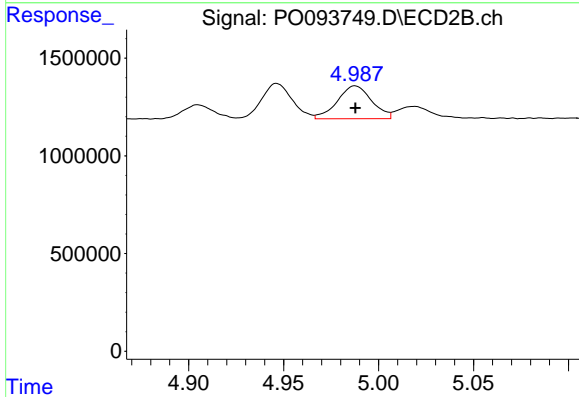
R.T.: 4.946 min
 Delta R.T.: 0.000 min
 Response: 2028923
 Conc: 50.94 ng/ml



#23 AR-1248-3

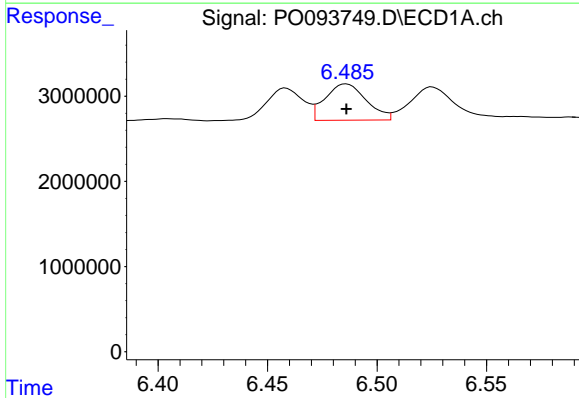
R.T.: 6.079 min
 Delta R.T.: 0.000 min
 Response: 6301155
 Conc: 52.20 ng/ml

Instrument :
 ECD_O
 ClientSampleId :
 AR1248ICC050



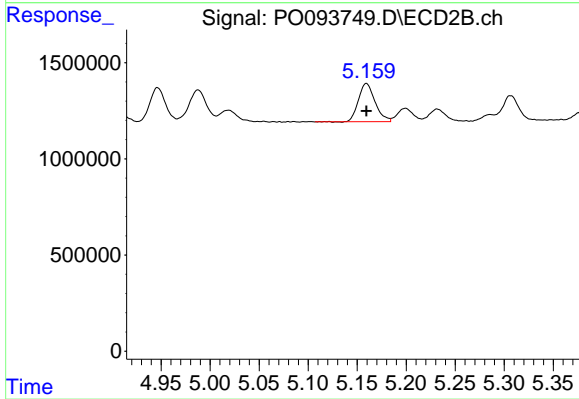
#23 AR-1248-3

R.T.: 4.988 min
 Delta R.T.: 0.000 min
 Response: 2125330
 Conc: 50.92 ng/ml



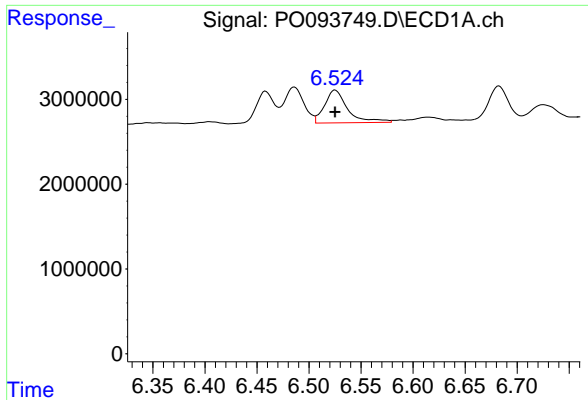
#24 AR-1248-4

R.T.: 6.486 min
 Delta R.T.: 0.000 min
 Response: 5562854
 Conc: 51.80 ng/ml



#24 AR-1248-4

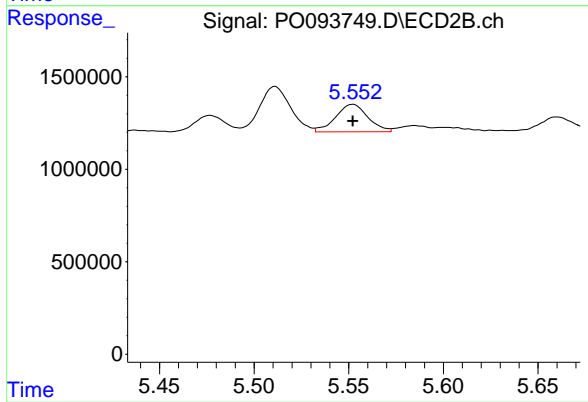
R.T.: 5.159 min
 Delta R.T.: 0.000 min
 Response: 2340714
 Conc: 49.78 ng/ml



#25 AR-1248-5

R.T.: 6.525 min
 Delta R.T.: 0.000 min
 Response: 5944320
 Conc: 51.23 ng/ml

Instrument :
 ECD_O
 ClientSampleId :
 AR1248IC050



#25 AR-1248-5

R.T.: 5.552 min
 Delta R.T.: 0.000 min
 Response: 1768593
 Conc: 47.37 ng/ml