

Data Path : P:\HPCHEM1\ECD_O\Data\PO040418\
 Data File : PO043559.D
 Signal(s) : Signal #1: ECD1A.CH Signal #2: ECD2B.CH
 Acq On : 04 Apr 2018 12:55
 Operator : SM/UA
 Sample : AR1660ICC250
 Misc :
 ALS Vial : 6 Sample Multiplier: 1

Instrument :
 ECD_O
 ClientSampleId :
 AR1660ICC250

Integration File signal 1: autoint1.e
 Integration File signal 2: autoint2.e
 Quant Time: Apr 04 13:58:02 2018
 Quant Method : P:\HPCHEM1\ECD_O\methods\PO040418.M
 Quant Title : GC EXTRACTABLES
 QLast Update : Wed Apr 04 13:48:44 2018
 Response via : Initial Calibration
 Integrator: ChemStation 6890 Scale Mode: Small noise peaks clipped

Volume Inj. : 2 µl
 Signal #1 Phase : ZB-MR1 Signal #2 Phase: ZB-MR2
 Signal #1 Info : 30Mx0.32mmx 0.50µ Signal #2 Info : 30M x 0.32mm x 0.25µm

Compound	RT#1	RT#2	Resp#1	Resp#2	ng/ml	ng/ml

System Monitoring Compounds						
1) SA Tetrachlo...	4.070	3.326	4584250	6922704	25.457	25.769
2) SA Decachlor...	9.419	8.090	4688931	6283940	25.830	26.142
Target Compounds						
3) L1 AR-1016-1	4.933	4.141	1162200	1704148	262.515	239.310
4) L1 AR-1016-2	5.272	4.575	1529757	1645978	260.577	270.677
5) L1 AR-1016-3	5.367	4.614	1276943	1949379	259.439	265.368
6) L1 AR-1016-4	5.788	4.778	1430589	2015027	257.125	263.803
7) L1 AR-1016-5	6.016	5.113	1159118	1915740	254.538	255.930
31) L7 AR-1260-1	6.745	5.766	2661322	4690866	265.515	278.819
32) L7 AR-1260-2	6.997	5.953	3404560	5720087	263.303	266.688
33) L7 AR-1260-3	7.349	6.268	3179040	5813346	312.536	270.796
34) L7 AR-1260-4	7.870	6.796	4548548	10108280	211.918	298.102 #
35) L7 AR-1260-5	8.154	7.131	3065549	6691891	247.789	277.539

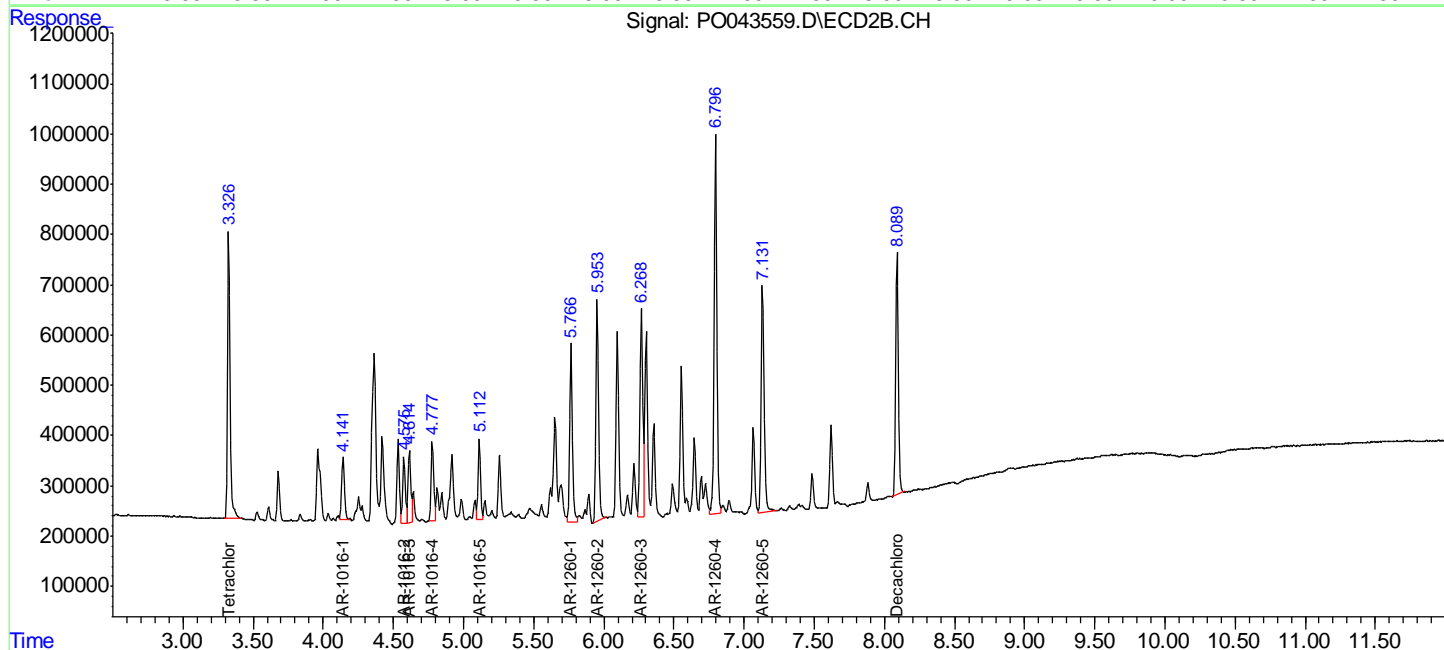
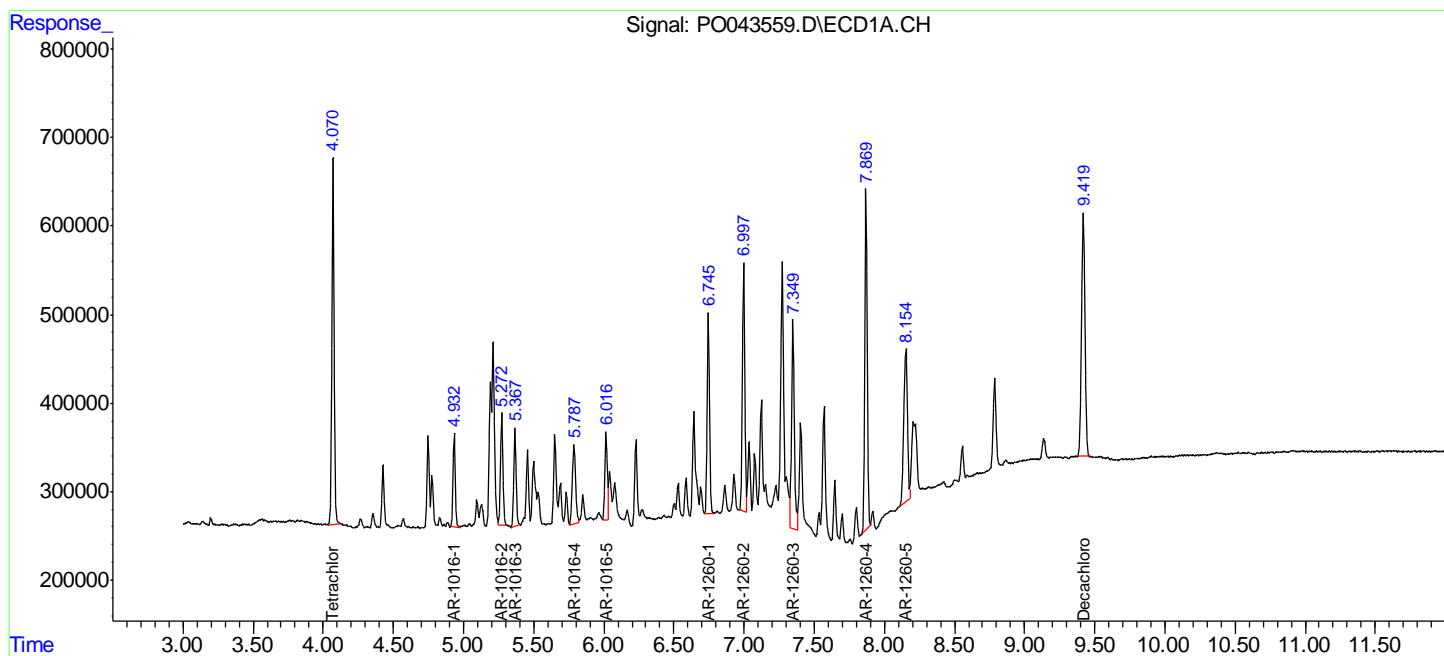
(f)=RT Delta > 1/2 Window (#)=Amounts differ by > 25% (m)=manual int.

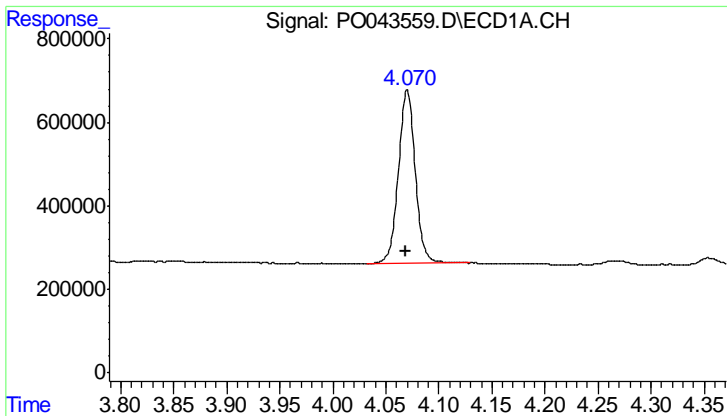
Data Path : P:\HPCHEM1\ECD_O\Data\PO040418\
 Data File : PO043559.D
 Signal(s) : Signal #1: ECD1A.CH Signal #2: ECD2B.CH
 Acq On : 04 Apr 2018 12:55
 Operator : SM/UA
 Sample : AR1660ICC250
 Misc :
 ALS Vial : 6 Sample Multiplier: 1

Instrument :
 ECD_O
 Client Sampled :
 AR1660ICC250

Integration File signal 1: autoint1.e
 Integration File signal 2: autoint2.e
 Quant Time: Apr 04 13:58:02 2018
 Quant Method : P:\HPCHEM1\ECD_O\methods\PO040418.M
 Quant Title : GC EXTRACTABLES
 QLast Update : Wed Apr 04 13:48:44 2018
 Response via : Initial Calibration
 Integrator: ChemStation 6890 Scale Mode: Small noise peaks clipped

Volume Inj. : 2 µl
 Signal #1 Phase : ZB-MR1 Signal #2 Phase: ZB-MR2
 Signal #1 Info : 30Mx0.32mmx 0.50µ Signal #2 Info : 30M x 0.32mm x 0.25µm

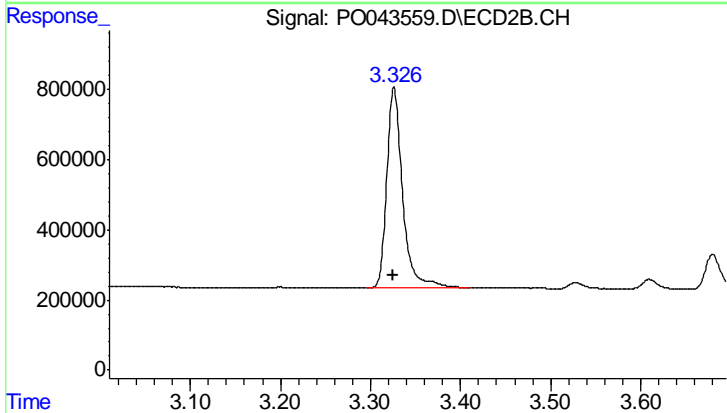




#1 Tetrachloro-m-xylene

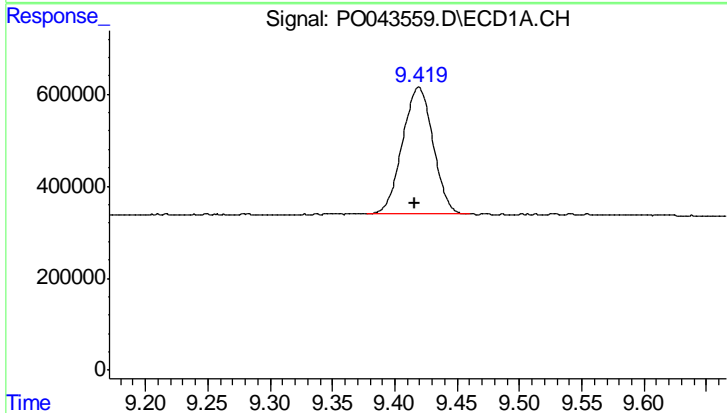
R.T.: 4.070 min
 Delta R.T.: 0.002 min
 Response: 4584250
 Conc: 25.46 ng/ml

Instrument :
 ECD_O
 ClientSampleId :
 AR1660ICC250



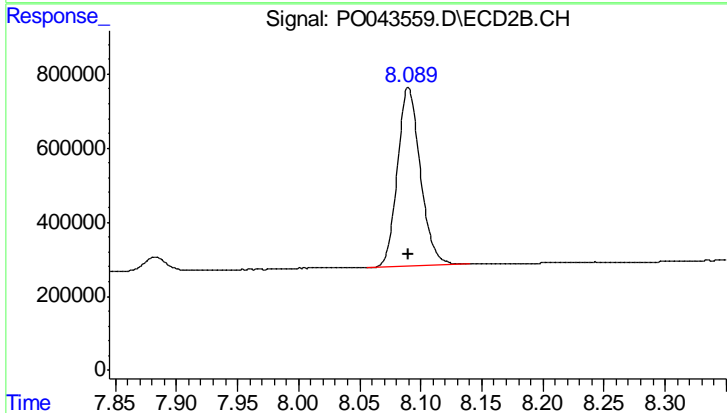
#1 Tetrachloro-m-xylene

R.T.: 3.326 min
 Delta R.T.: 0.000 min
 Response: 6922704
 Conc: 25.77 ng/ml



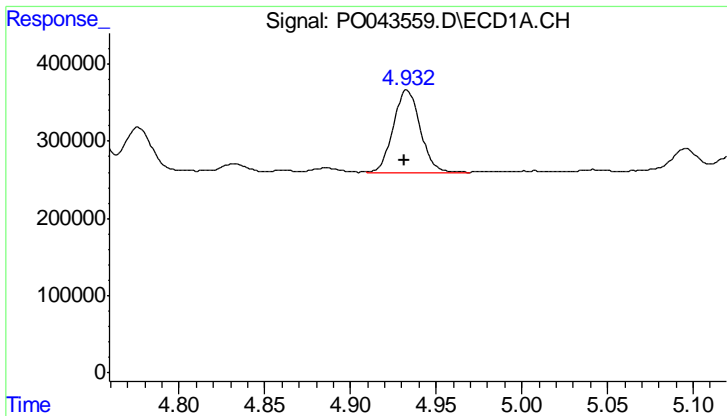
#2 Decachlorobiphenyl

R.T.: 9.419 min
 Delta R.T.: 0.003 min
 Response: 4688931
 Conc: 25.83 ng/ml



#2 Decachlorobiphenyl

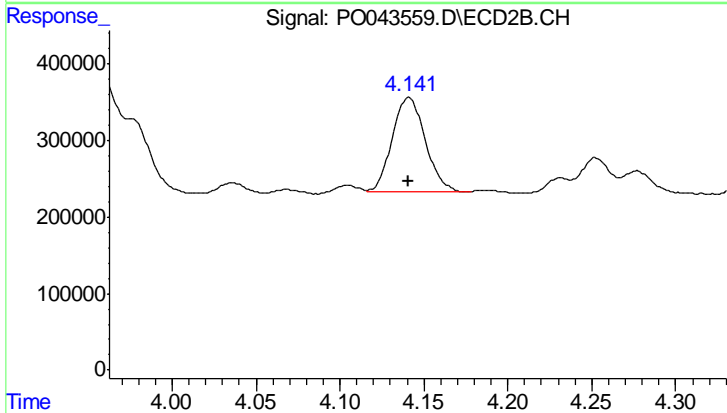
R.T.: 8.090 min
 Delta R.T.: 0.000 min
 Response: 6283940
 Conc: 26.14 ng/ml



#3 AR-1016-1

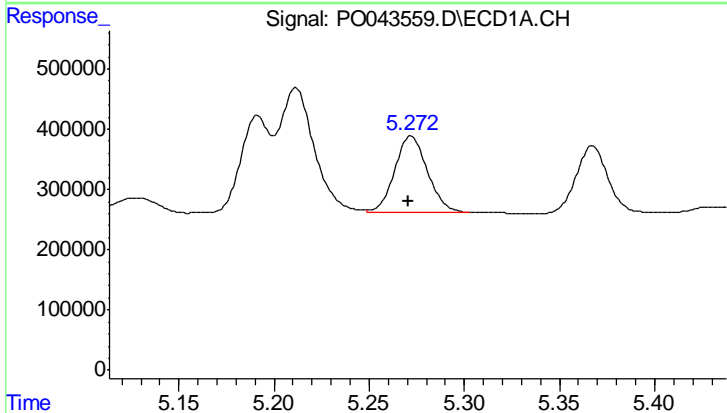
R.T.: 4.933 min
 Delta R.T.: 0.001 min
 Response: 1162200
 Conc: 262.51 ng/ml

Instrument :
 ECD_O
 ClientSampleId :
 AR1660ICC250



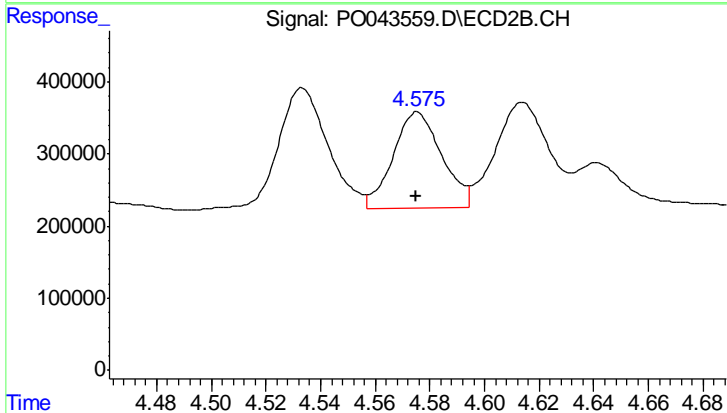
#3 AR-1016-1

R.T.: 4.141 min
 Delta R.T.: 0.000 min
 Response: 1704148
 Conc: 239.31 ng/ml



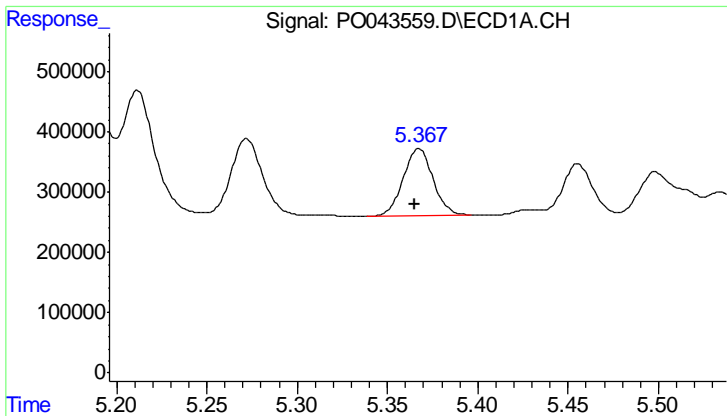
#4 AR-1016-2

R.T.: 5.272 min
 Delta R.T.: 0.001 min
 Response: 1529757
 Conc: 260.58 ng/ml



#4 AR-1016-2

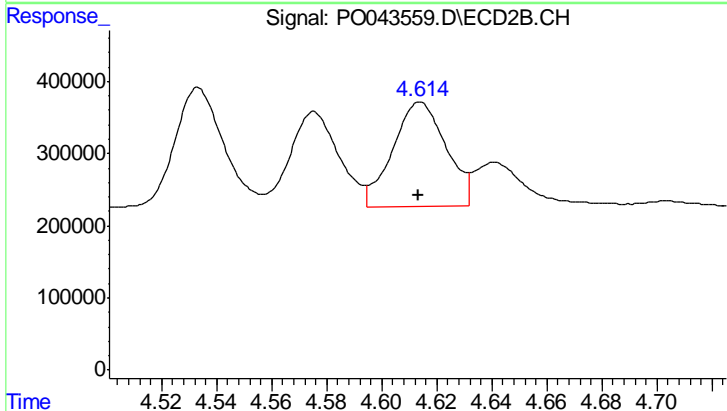
R.T.: 4.575 min
 Delta R.T.: 0.000 min
 Response: 1645978
 Conc: 270.68 ng/ml



#5 AR-1016-3

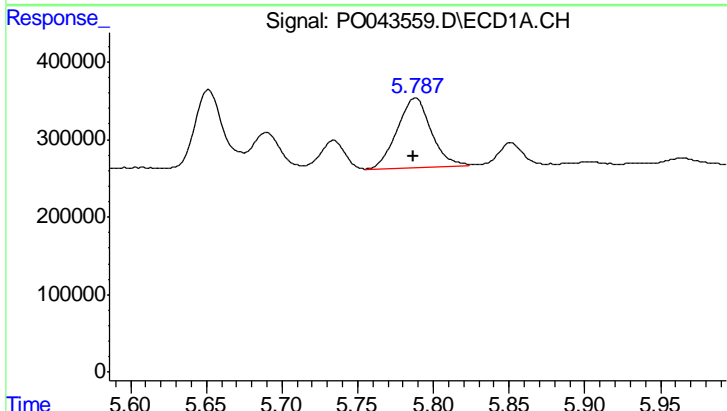
R.T.: 5.367 min
 Delta R.T.: 0.002 min
 Response: 1276943
 Conc: 259.44 ng/ml

Instrument :
 ECD_O
 ClientSampleId :
 AR1660ICC250



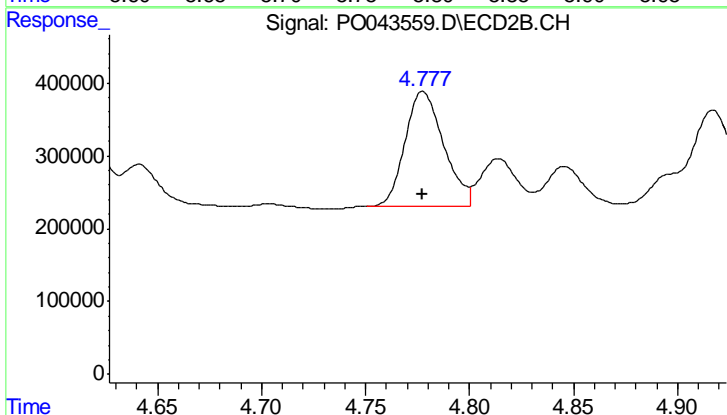
#5 AR-1016-3

R.T.: 4.614 min
 Delta R.T.: 0.000 min
 Response: 1949379
 Conc: 265.37 ng/ml



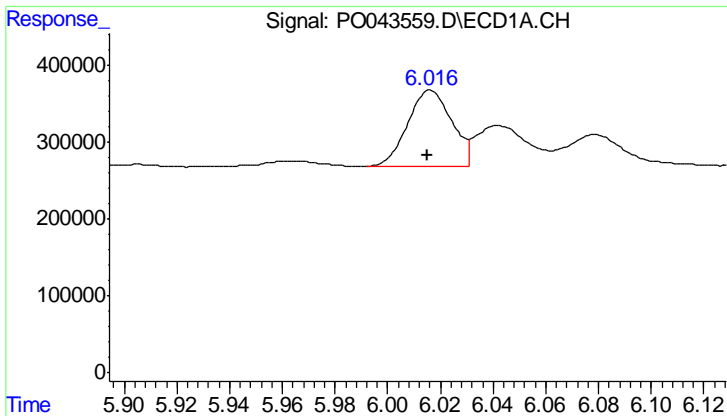
#6 AR-1016-4

R.T.: 5.788 min
 Delta R.T.: 0.001 min
 Response: 1430589
 Conc: 257.13 ng/ml



#6 AR-1016-4

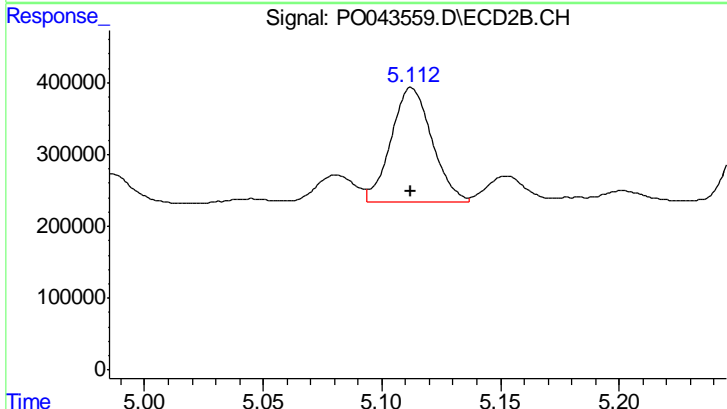
R.T.: 4.778 min
 Delta R.T.: 0.000 min
 Response: 2015027
 Conc: 263.80 ng/ml



#7 AR-1016-5

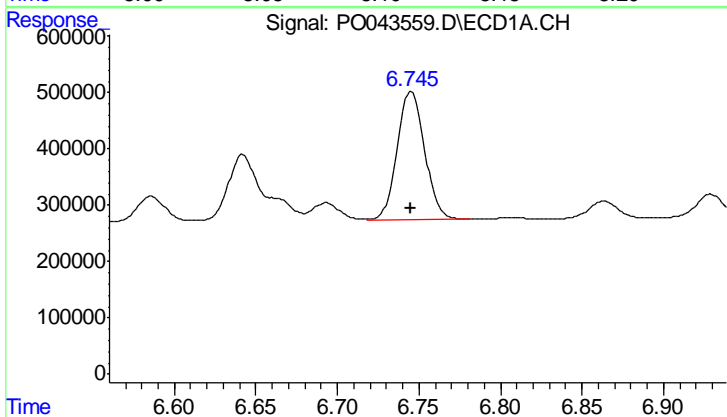
R.T.: 6.016 min
 Delta R.T.: 0.001 min
 Response: 1159118
 Conc: 254.54 ng/ml

Instrument :
 ECD_O
 ClientSampleId :
 AR1660ICC250



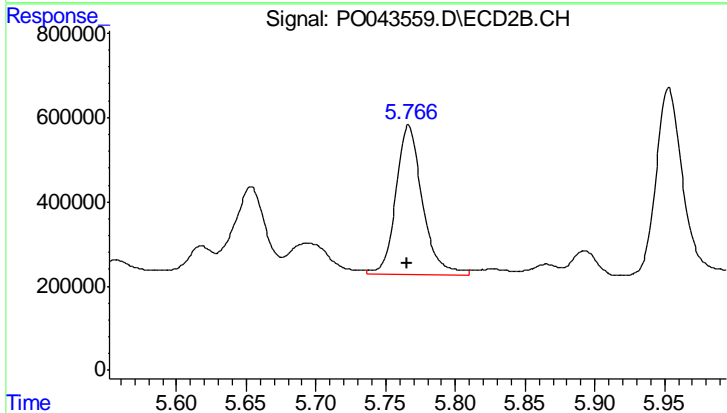
#7 AR-1016-5

R.T.: 5.113 min
 Delta R.T.: 0.000 min
 Response: 1915740
 Conc: 255.93 ng/ml



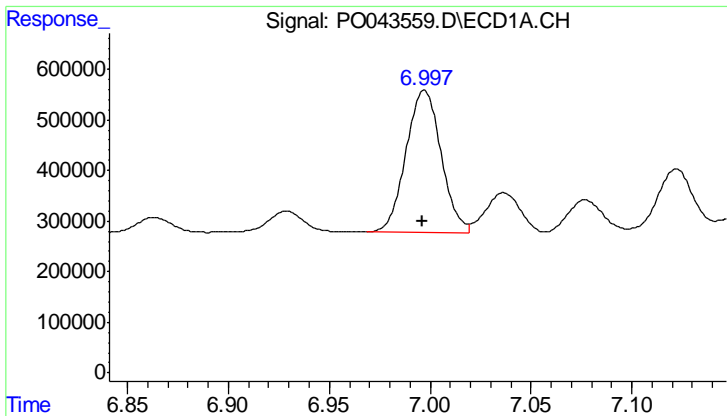
#31 AR-1260-1

R.T.: 6.745 min
 Delta R.T.: 0.000 min
 Response: 2661322
 Conc: 265.52 ng/ml



#31 AR-1260-1

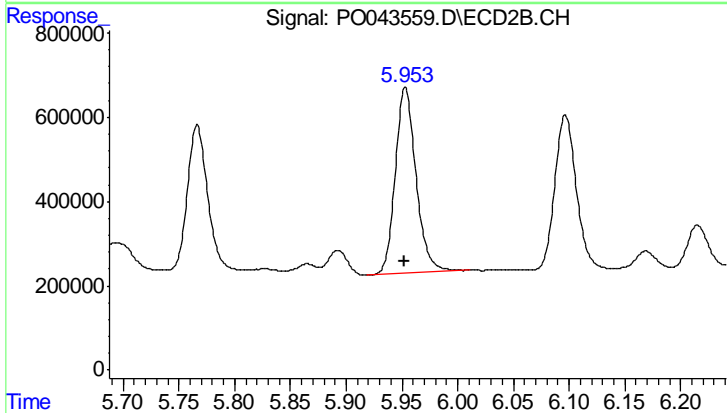
R.T.: 5.766 min
 Delta R.T.: 0.000 min
 Response: 4690866
 Conc: 278.82 ng/ml



#32 AR-1260-2

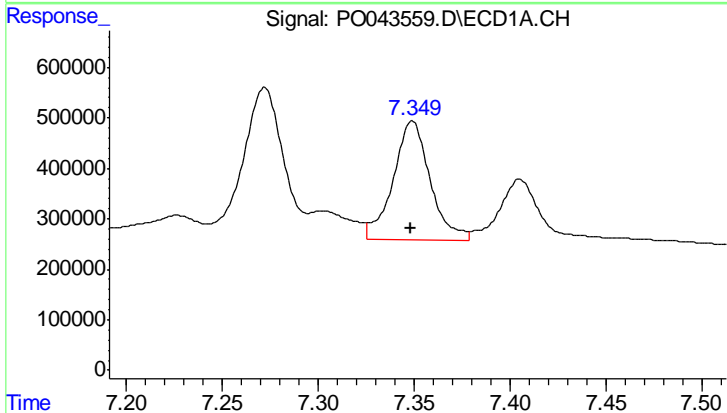
R.T.: 6.997 min
 Delta R.T.: 0.001 min
 Response: 3404560
 Conc: 263.30 ng/ml

Instrument :
 ECD_O
 ClientSampled :
 AR1660ICC250



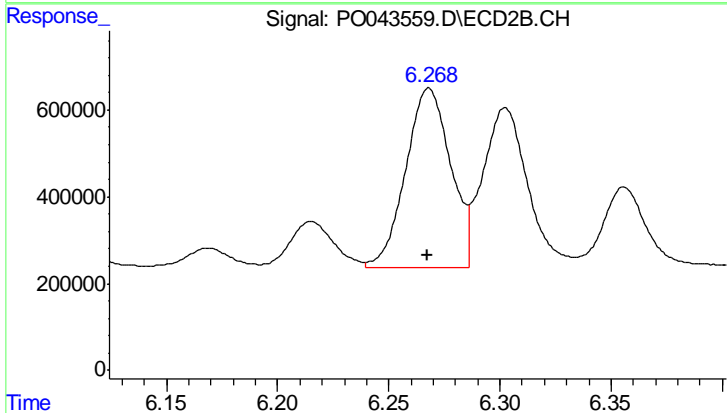
#32 AR-1260-2

R.T.: 5.953 min
 Delta R.T.: 0.000 min
 Response: 5720087
 Conc: 266.69 ng/ml



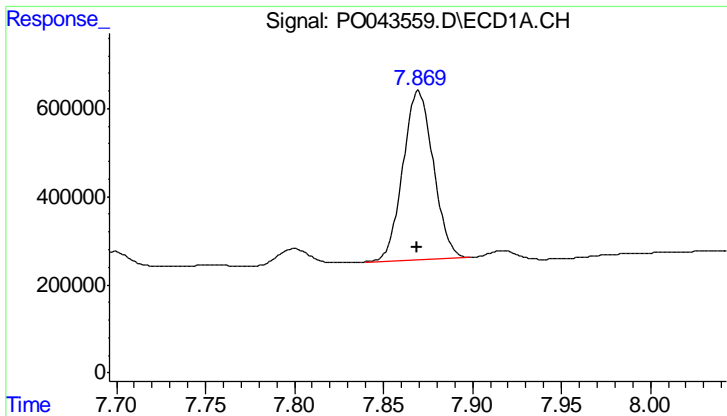
#33 AR-1260-3

R.T.: 7.349 min
 Delta R.T.: 0.000 min
 Response: 3179040
 Conc: 312.54 ng/ml



#33 AR-1260-3

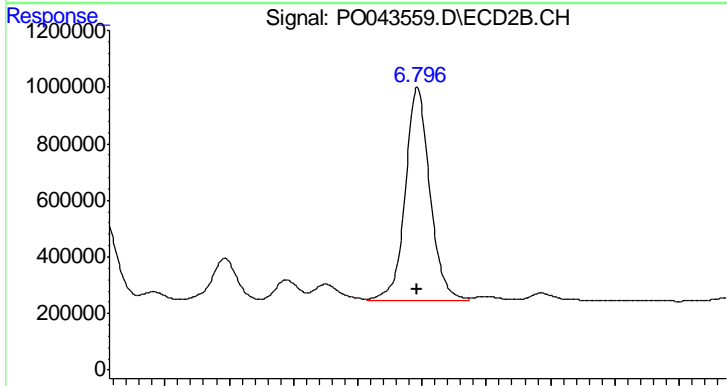
R.T.: 6.268 min
 Delta R.T.: 0.000 min
 Response: 5813346
 Conc: 270.80 ng/ml



#34 AR-1260-4

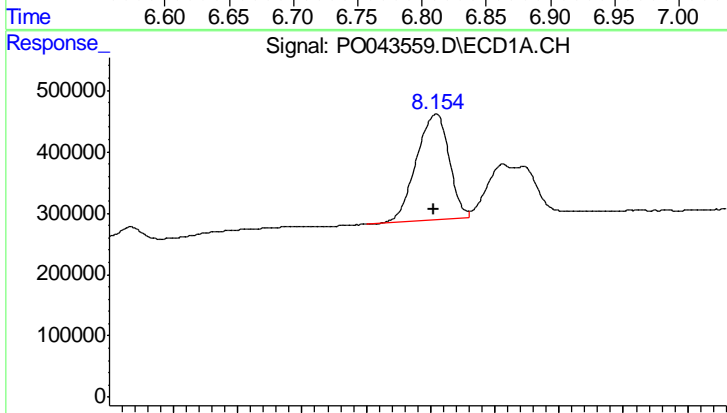
R.T.: 7.870 min
 Delta R.T.: 0.000 min
 Response: 4548548
 Conc: 211.92 ng/ml

Instrument :
 ECD_O
 ClientSampleId :
 AR1660ICC250



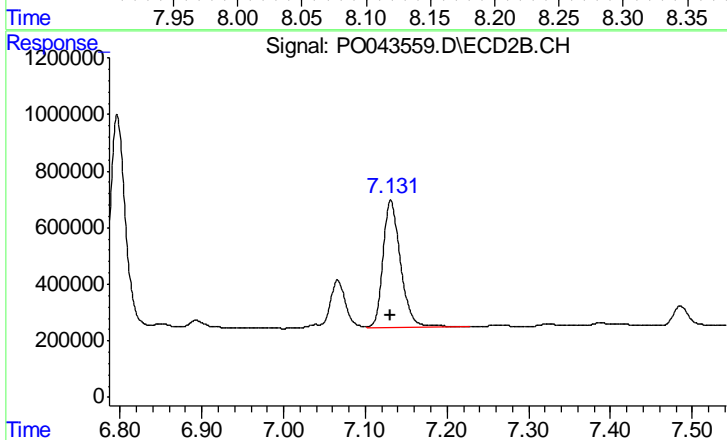
#34 AR-1260-4

R.T.: 6.796 min
 Delta R.T.: 0.000 min
 Response: 10108280
 Conc: 298.10 ng/ml



#35 AR-1260-5

R.T.: 8.154 min
 Delta R.T.: 0.002 min
 Response: 3065549
 Conc: 247.79 ng/ml



#35 AR-1260-5

R.T.: 7.131 min
 Delta R.T.: 0.000 min
 Response: 6691891
 Conc: 277.54 ng/ml