

Data Path : Z:\pestpcbsrv\HPCHEM1\ECD_O\Data\P0040423\
 Data File : P0093785.D
 Signal(s) : Signal #1: ECD1A.ch Signal #2: ECD2B.ch
 Acq On : 04 Apr 2023 14:26
 Operator : YP/AJ
 Sample : PB151885BL
 Misc :
 ALS Vial : 17 Sample Multiplier: 1

Instrument :
 ECD_O
 ClientSampleId :
 PB151885BL

Integration File signal 1: autoint1.e
 Integration File signal 2: autoint2.e
 Quant Time: Apr 04 17:50:17 2023
 Quant Method : Z:\pestpcbsrv\HPCHEM1\ECD_O\methods\P0040323.M
 Quant Title : GC EXTRACTABLES
 QLast Update : Tue Apr 04 06:20:55 2023
 Response via : Initial Calibration
 Integrator: ChemStation

Volume Inj. : 2 µl
 Signal #1 Phase : ZB-MR1 Signal #2 Phase: ZB-MR2
 Signal #1 Info : 30Mx0.32mmx 0.50µ Signal #2 Info : 30M x 0.32mm x 0.25µm

Compound	RT#1	RT#2	Resp#1	Resp#2	ng/ml	ng/ml

System Monitoring Compounds						
1) SA Tetrachlo...	4.424	3.628	69808189	24189156	18.674	18.995
2) SA Decachlor...	10.253	8.653	48859279	22176959	21.842	22.182

Target Compounds

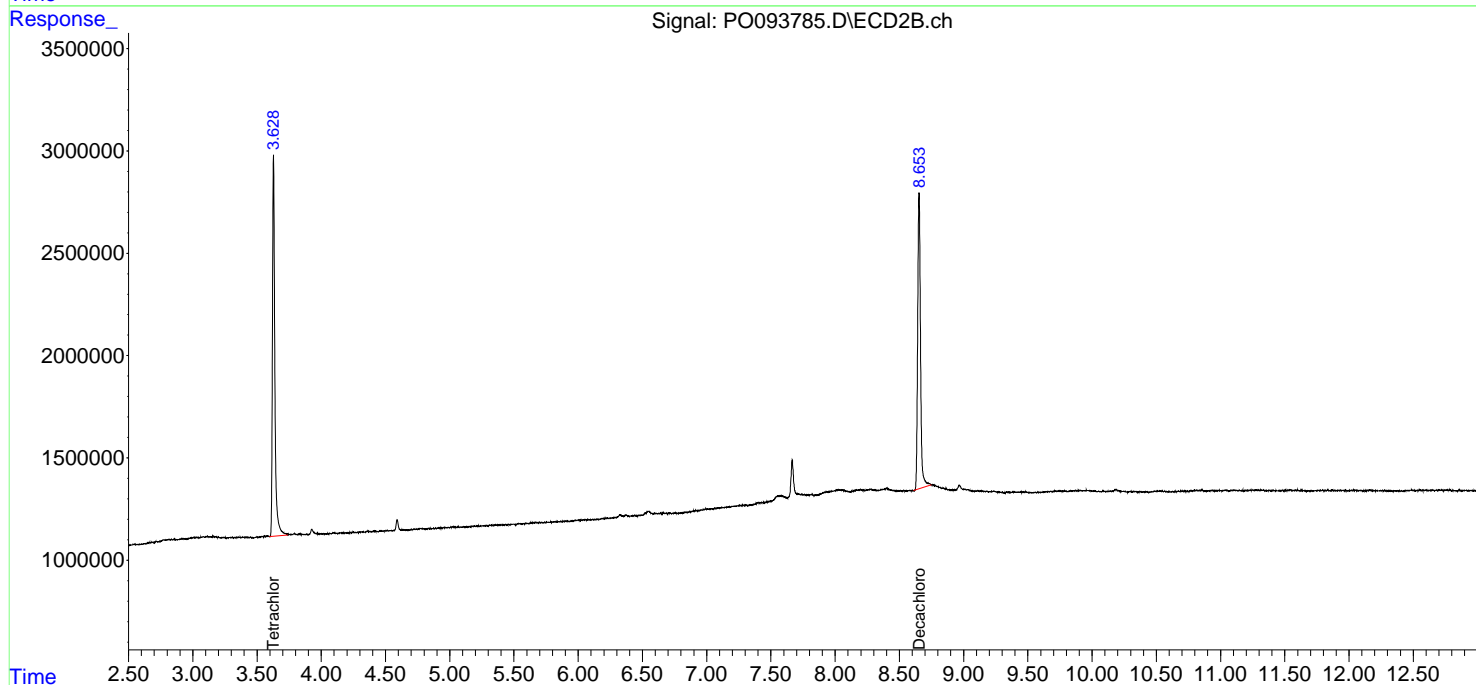
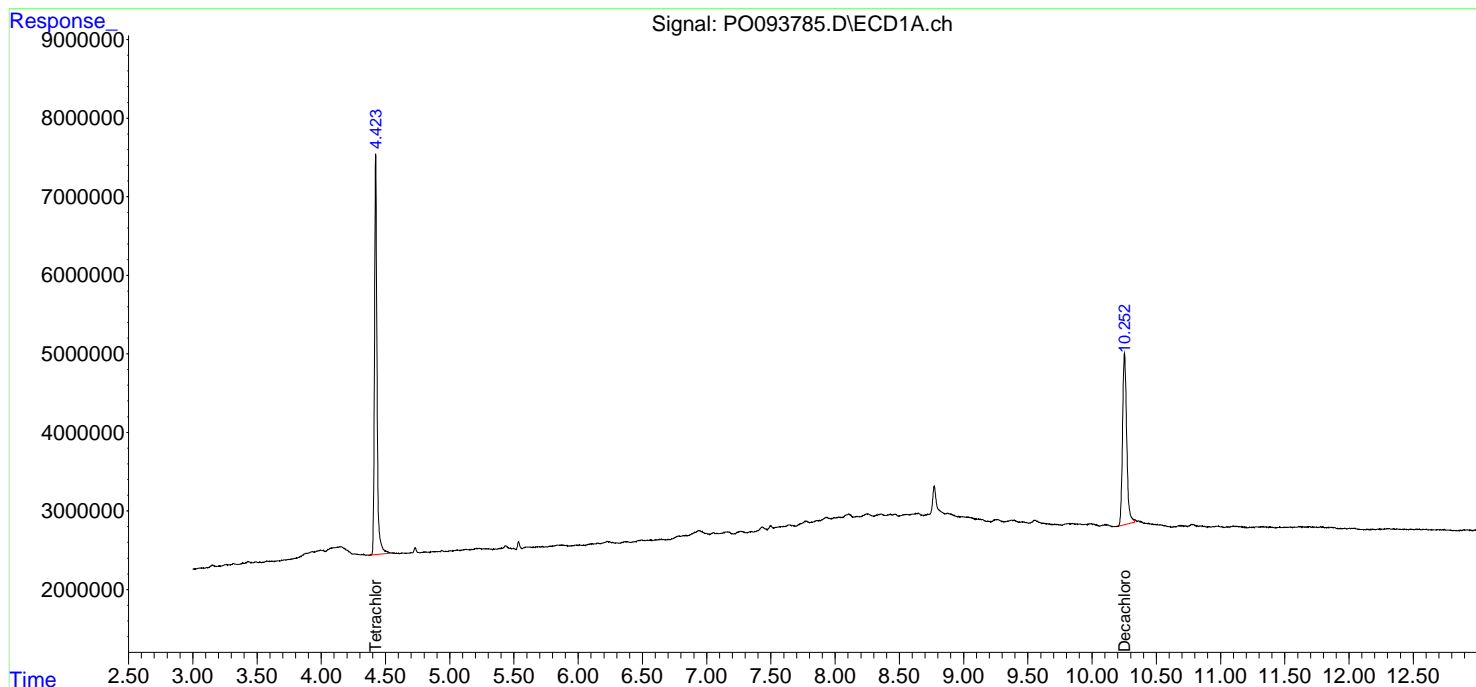
 (f)=RT Delta > 1/2 Window (#)=Amounts differ by > 25% (m)=manual int.

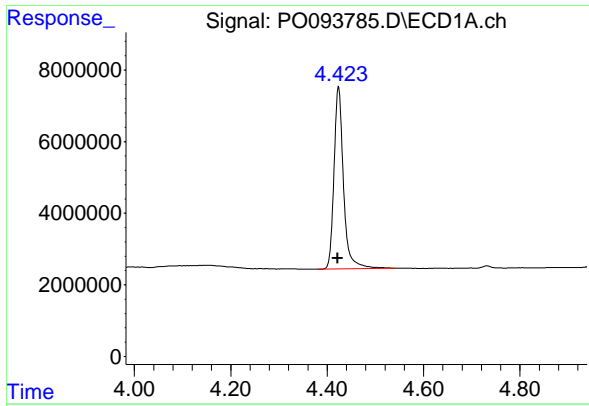
Data Path : Z:\pestpcbsrv\HPCHEM1\ECD_O\Data\PO040423\
Data File : PO093785.D
Signal(s) : Signal #1: ECD1A.ch Signal #2: ECD2B.ch
Acq On : 04 Apr 2023 14:26
Operator : YP/AJ
Sample : PB151885BL
Misc :
ALS Vial : 17 Sample Multiplier: 1

Instrument :
ECD_O
ClientSampleId :
PB151885BL

Integration File signal 1: autoint1.e
Integration File signal 2: autoint2.e
Quant Time: Apr 04 17:50:17 2023
Quant Method : Z:\pestpcbsrv\HPCHEM1\ECD_O\methods\PO040323.M
Quant Title : GC EXTRACTABLES
QLast Update : Tue Apr 04 06:20:55 2023
Response via : Initial Calibration
Integrator: ChemStation

Volume Inj. : 2 µl
Signal #1 Phase : ZB-MR1 Signal #2 Phase: ZB-MR2
Signal #1 Info : 30Mx0.32mmx 0.50µ Signal #2 Info : 30M x 0.32mm x 0.25µm

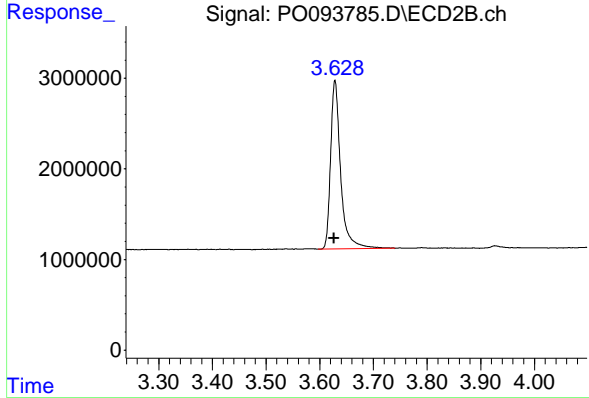




#1 Tetrachloro-m-xylene

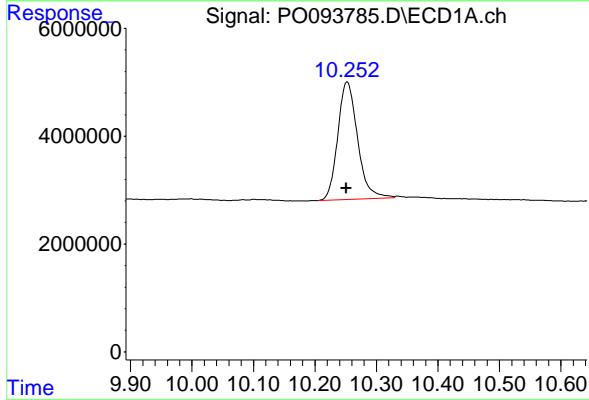
R.T.: 4.424 min
 Delta R.T.: 0.002 min
 Response: 69808189
 Conc: 18.67 ng/ml

Instrument :
 ECD_O
 ClientSampleId :
 PB151885BL



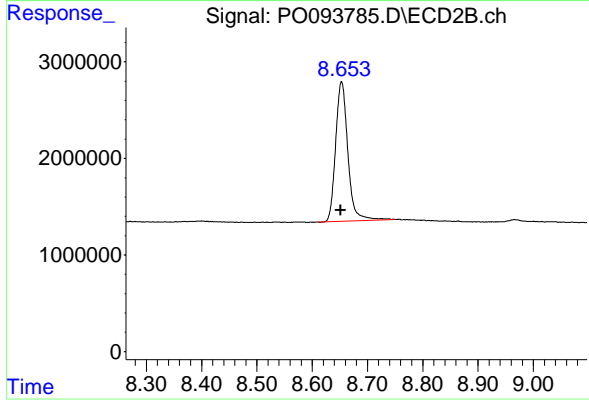
#1 Tetrachloro-m-xylene

R.T.: 3.628 min
 Delta R.T.: 0.002 min
 Response: 24189156
 Conc: 19.00 ng/ml



#2 Decachlorobiphenyl

R.T.: 10.253 min
 Delta R.T.: 0.002 min
 Response: 48859279
 Conc: 21.84 ng/ml



#2 Decachlorobiphenyl

R.T.: 8.653 min
 Delta R.T.: 0.002 min
 Response: 22176959
 Conc: 22.18 ng/ml