

Data Path : Z:\pestpcbsrv\HPCHEM1\ECD_0\Data\P0040723\
 Data File : P0093924.D
 Signal(s) : Signal #1: ECD1A.ch Signal #2: ECD2B.ch
 Acq On : 07 Apr 2023 14:18
 Operator : YP/AJ
 Sample : 02213-07
 Misc : AR1232 LOD 25 PPB
 ALS Vial : 20 Sample Multiplier: 1

Instrument :
 ECD_0
 ClientSampleId :

Integration File signal 1: autoint1.e
 Integration File signal 2: autoint2.e
 Quant Time: Apr 07 22:30:10 2023
 Quant Method : Z:\pestpcbsrv\HPCHEM1\ECD_0\methods\P0040323.M
 Quant Title : GC EXTRACTABLES
 QLast Update : Tue Apr 04 06:20:55 2023
 Response via : Initial Calibration
 Integrator: ChemStation

Volume Inj. : 2 µl
 Signal #1 Phase : ZB-MR1 Signal #2 Phase: ZB-MR2
 Signal #1 Info : 30Mx0.32mmx 0.50µ Signal #2 Info : 30M x 0.32mm x 0.25µm

Compound	RT#1	RT#2	Resp#1	Resp#2	ng/ml	ng/ml
System Monitoring Compounds						
1) SA Tetrachlo...	4.420	3.625	63081019	23758496	16.875	18.657
2) SA Decachlor...	10.243	8.644	48043402	20427324	21.477	20.432
Target Compounds						
3) L1 AR-1016-1	5.596	4.726	2537155	1076167	24.810	30.329
4) L1 AR-1016-2	5.617	4.726	2342989	1076167	15.033	19.925 #
5) L1 AR-1016-3	5.679	4.901	1781364	333733	18.061	11.775 #
6) L1 AR-1016-4	5.780	4.949	598203	410474	8.136	15.545 #
7) L1 AR-1016-5	6.078	5.157	2400733	388223	28.357	11.864 #
8) L2 AR-1221-1	4.626	0.000	1080365	0	23.425	N.D. #
9) L2 AR-1221-2	4.723	3.923	1357105	661936	39.535	56.085 #
10) L2 AR-1221-3	4.792	3.999	2196080	754944	20.968	20.494
11) L3 AR-1232-1	4.792	3.999	2196080	754944	25.162	24.165
12) L3 AR-1232-2	5.326	4.726	953442	1076167	22.295	40.651 #
13) L3 AR-1232-3	5.617	4.901	2342989	333733	31.896	25.304
14) L3 AR-1232-4	5.780	4.987	598203	246621	17.378	17.354
15) L3 AR-1232-5	5.872	5.157	1041345	388223	32.785	25.130
16) L4 AR-1242-1	5.596	4.726	2537155	1076167	29.068	34.972
17) L4 AR-1242-2	5.617	4.726	2342989	1076167	17.621	23.398 #
18) L4 AR-1242-3	5.679	4.901	1781364	333733	20.985	13.771 #
19) L4 AR-1242-4	5.780	4.987	598203	246621	9.574	8.785
20) L4 AR-1242-5	6.521	5.509	3115975	402434	46.279	14.115 #
21) L5 AR-1248-1	5.596	4.726	2537155	1076167	37.709	45.119
22) L5 AR-1248-2	5.872	4.949	1041345	410474	9.520	10.305
23) L5 AR-1248-3	6.078	4.987	2400733	246621	19.887	5.909 #
24) L5 AR-1248-4	6.484	5.157	2872222	388223	26.744	8.256 #
25) L5 AR-1248-5	6.521	5.549	3115975	326644	26.856	8.749 #
26) L6 AR-1254-1	6.457	5.509	3874922	402434	28.570	5.888 #
27) L6 AR-1254-2	6.682	0.000	2024745	0	10.358	N.D. #
28) L6 AR-1254-3	7.049	0.000	1077967	0	5.835	N.D. #
29) L6 AR-1254-4	7.336	0.000	189763	0	1.871	N.D. #
30) L6 AR-1254-5	7.778	0.000	1469039	0	10.833	N.D. #
31) L7 AR-1260-1	7.250	0.000	203412	0	1.394	N.D. #
32) L7 AR-1260-2	7.470	0.000	61002	0	0.381	N.D. #
33) L7 AR-1260-3	7.857	0.000	268592	0	2.023	N.D. #
34) L7 AR-1260-4	8.029f	0.000	122817	0	0.892	N.D. #
35) L7 AR-1260-5	8.389	0.000	311997	0	1.433	N.D. #
36) L8 AR-1262-1	7.857	0.000	268592	0	1.572	N.D. #
37) L8 AR-1262-2	8.389	0.000	311997	0	1.342	N.D. #
38) L8 AR-1262-3	8.707	0.000	170240	0	1.039	N.D. #
39) L8 AR-1262-4	8.812	7.659f	416765	1221466	4.160	14.729 #
40) L8 AR-1262-5	9.457	0.000	677897	0	8.423	N.D. #
41) L9 AR-1268-1	8.707	0.000	170240	0	0.506	N.D. #

Data Path : Z:\pestpcbsrv\HPCHEM1\ECD_0\Data\P0040723\
 Data File : P0093924.D
 Signal(s) : Signal #1: ECD1A.ch Signal #2: ECD2B.ch
 Acq On : 07 Apr 2023 14:18
 Operator : YP/AJ
 Sample : 02213-07
 Misc : AR1232 LOD 25 PPB
 ALS Vial : 20 Sample Multiplier: 1

Instrument :
 ECD_0
 ClientSampleId :

Integration File signal 1: autoint1.e
 Integration File signal 2: autoint2.e
 Quant Time: Apr 07 22:30:10 2023
 Quant Method : Z:\pestpcbsrv\HPCHEM1\ECD_0\methods\P0040323.M
 Quant Title : GC EXTRACTABLES
 QLast Update : Tue Apr 04 06:20:55 2023
 Response via : Initial Calibration
 Integrator: ChemStation

Volume Inj. : 2 µl
 Signal #1 Phase : ZB-MR1 Signal #2 Phase: ZB-MR2
 Signal #1 Info : 30Mx0.32mmx 0.50µ Signal #2 Info : 30M x 0.32mm x 0.25µm

	Compound	RT#1	RT#2	Resp#1	Resp#2	ng/ml	ng/ml
42)	L9 AR-1268-2	8.812	7.659f	416765	1221466	1.295	8.990 #
43)	L9 AR-1268-3	9.044	0.000	527204	0	1.859	N.D. #
44)	L9 AR-1268-4	9.457	0.000	677897	0	7.011	N.D. #
45)	L9 AR-1268-5	9.889	0.000	113854	0	0.136	N.D. #

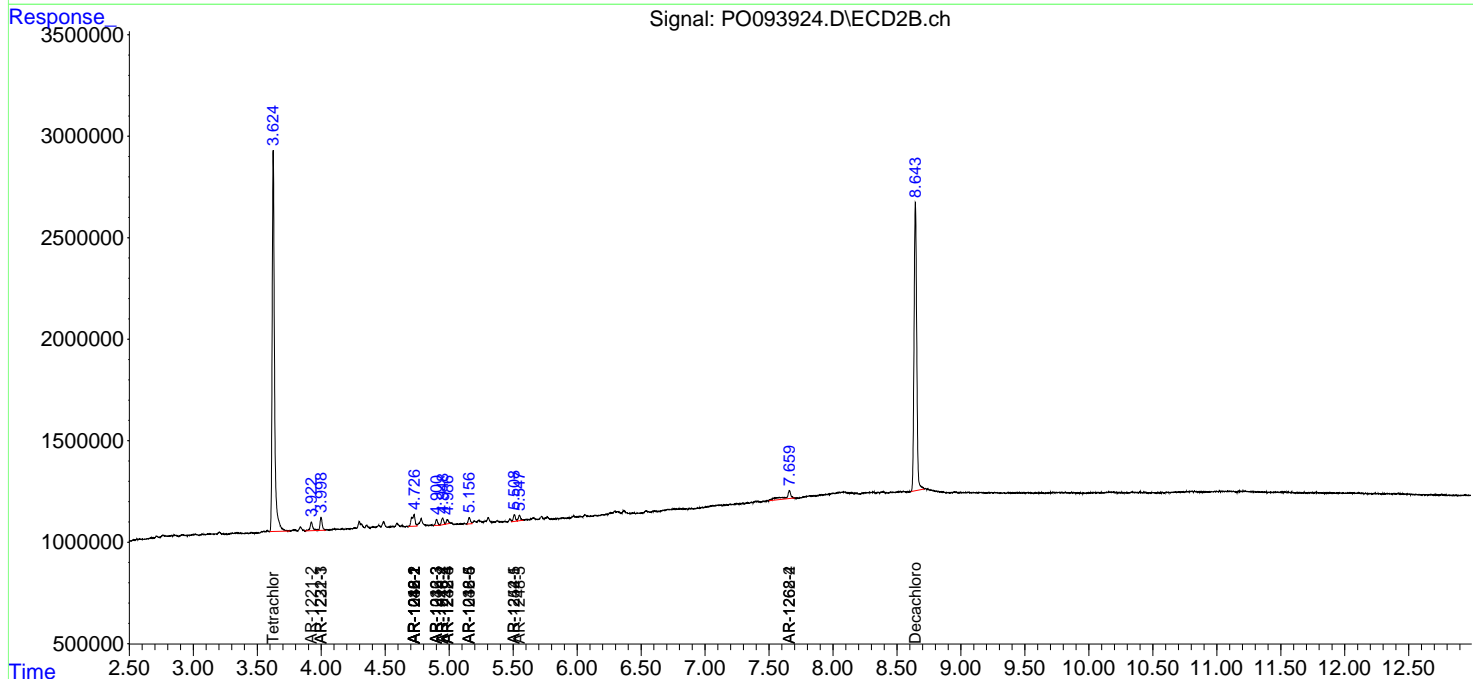
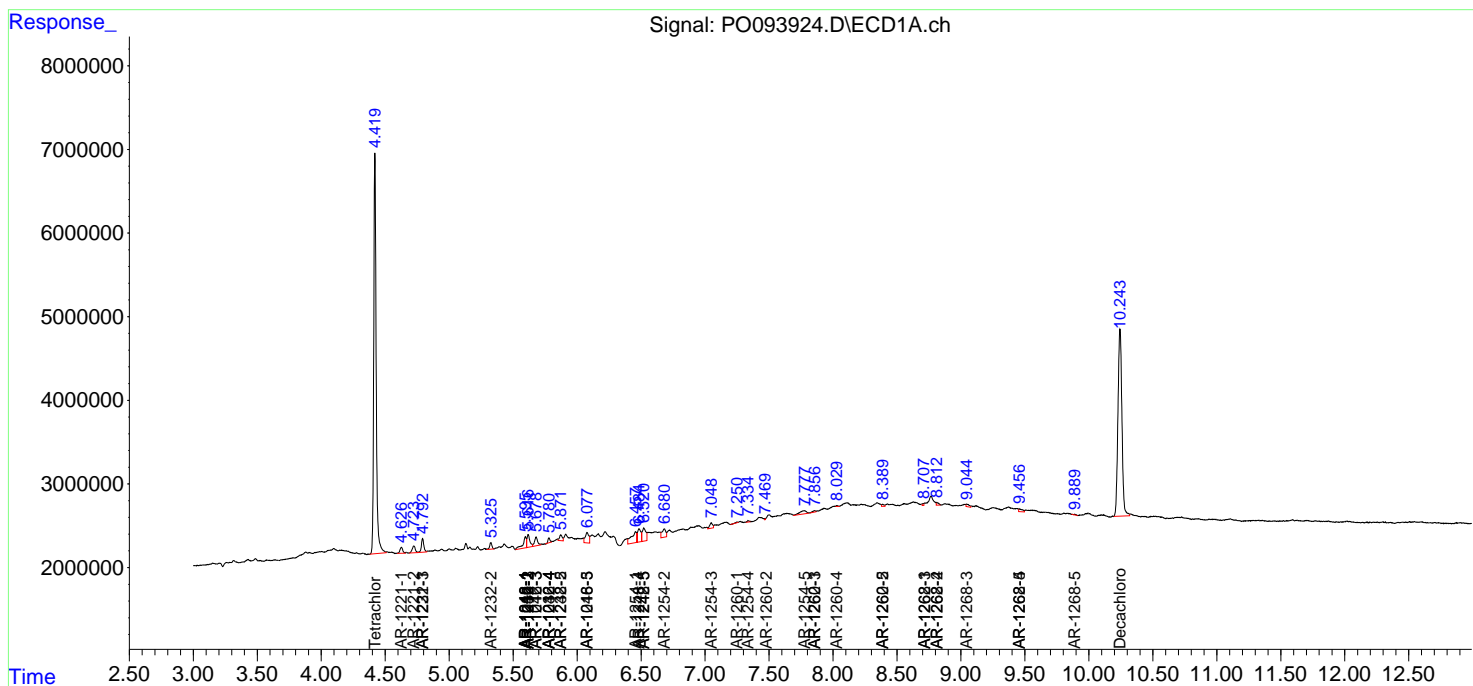
(f)=RT Delta > 1/2 Window (#)=Amounts differ by > 25% (m)=manual int.

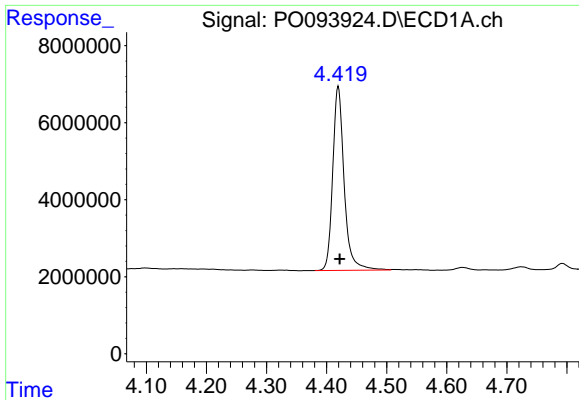
Data Path : Z:\pestpcbsrv\HPCHEM1\ECD_O\Data\PO040723\
 Data File : PO093924.D
 Signal(s) : Signal #1: ECD1A.ch Signal #2: ECD2B.ch
 Acq On : 07 Apr 2023 14:18
 Operator : YP/AJ
 Sample : 02213-07
 Misc : AR1232 LOD 25 PPB
 ALS Vial : 20 Sample Multiplier: 1

Instrument :
 ECD_O
 ClientSampleId :

Integration File signal 1: autoint1.e
 Integration File signal 2: autoint2.e
 Quant Time: Apr 07 22:30:10 2023
 Quant Method : Z:\pestpcbsrv\HPCHEM1\ECD_O\methods\PO040323.M
 Quant Title : GC EXTRACTABLES
 QLast Update : Tue Apr 04 06:20:55 2023
 Response via : Initial Calibration
 Integrator: ChemStation

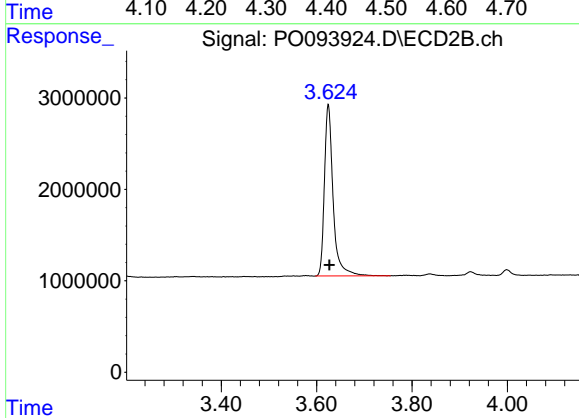
Volume Inj. : 2 µl
 Signal #1 Phase : ZB-MR1 Signal #2 Phase: ZB-MR2
 Signal #1 Info : 30Mx0.32mmx 0.50µ Signal #2 Info : 30M x 0.32mm x 0.25µm



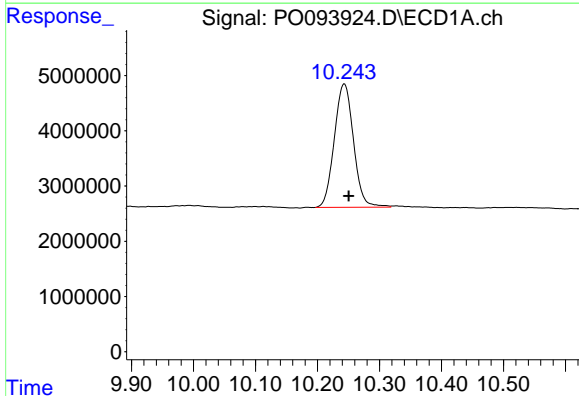


#1 Tetrachloro-m-xylene
 R.T.: 4.420 min
 Delta R.T.: -0.002 min
 Response: 63081019
 Conc: 16.87 ng/ml

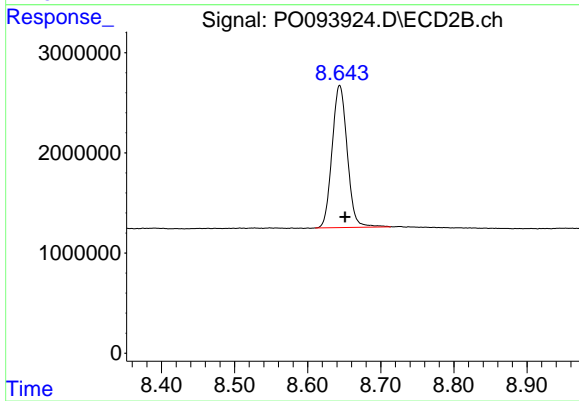
Instrument :
 ECD_O
 ClientSampleId :



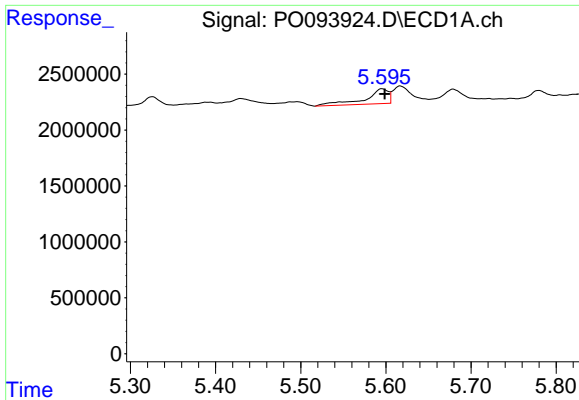
#1 Tetrachloro-m-xylene
 R.T.: 3.625 min
 Delta R.T.: -0.002 min
 Response: 23758496
 Conc: 18.66 ng/ml



#2 Decachlorobiphenyl
 R.T.: 10.243 min
 Delta R.T.: -0.007 min
 Response: 48043402
 Conc: 21.48 ng/ml



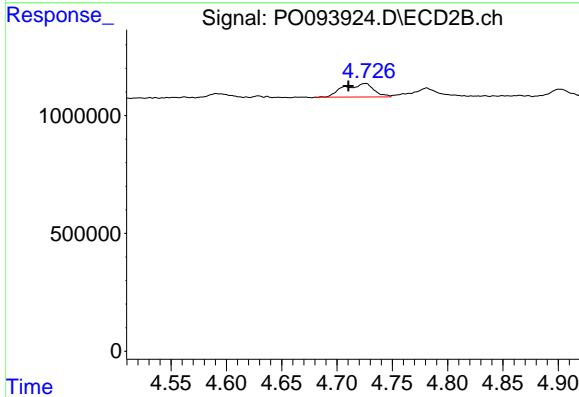
#2 Decachlorobiphenyl
 R.T.: 8.644 min
 Delta R.T.: -0.008 min
 Response: 20427324
 Conc: 20.43 ng/ml



#3 AR-1016-1

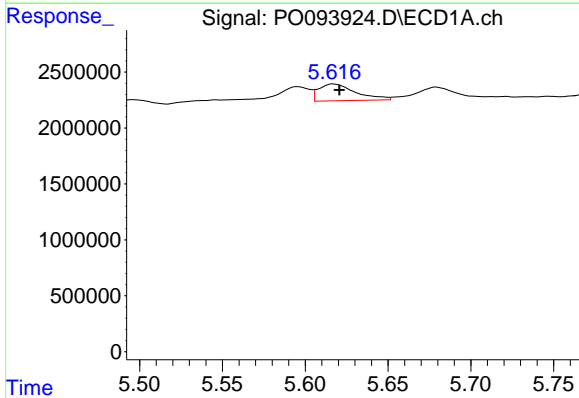
R.T.: 5.596 min
 Delta R.T.: -0.003 min
 Response: 2537155
 Conc: 24.81 ng/ml

Instrument :
 ECD_O
 ClientSampleId :



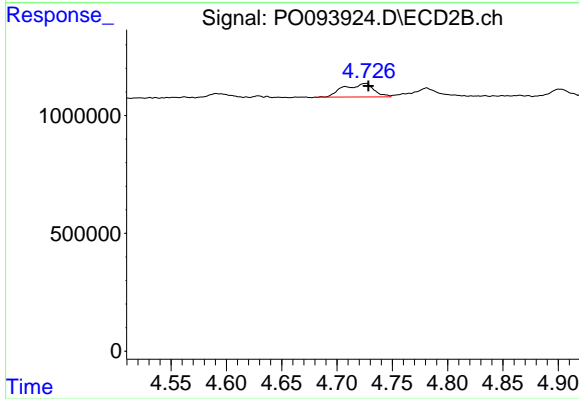
#3 AR-1016-1

R.T.: 4.726 min
 Delta R.T.: 0.015 min
 Response: 1076167
 Conc: 30.33 ng/ml



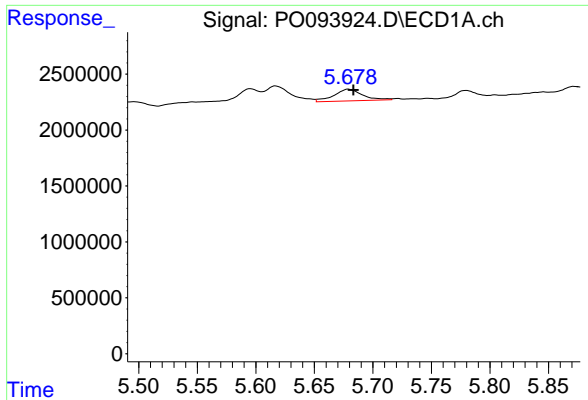
#4 AR-1016-2

R.T.: 5.617 min
 Delta R.T.: -0.004 min
 Response: 2342989
 Conc: 15.03 ng/ml



#4 AR-1016-2

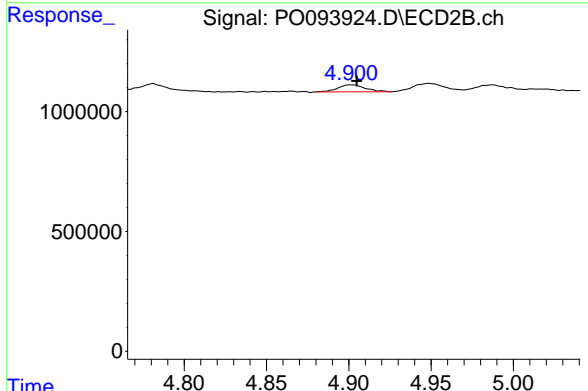
R.T.: 4.726 min
 Delta R.T.: -0.003 min
 Response: 1076167
 Conc: 19.92 ng/ml



#5 AR-1016-3

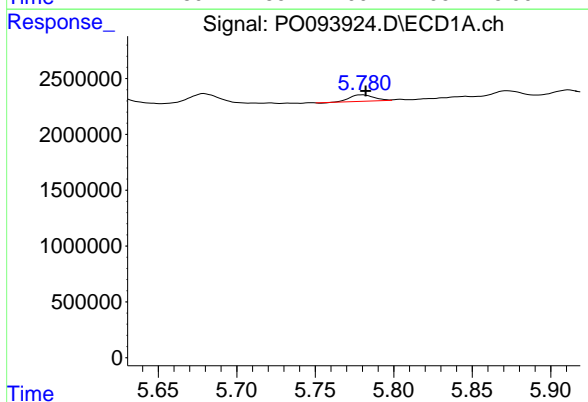
R.T.: 5.679 min
 Delta R.T.: -0.004 min
 Response: 1781364
 Conc: 18.06 ng/ml

Instrument :
 ECD_O
 ClientSampleId :



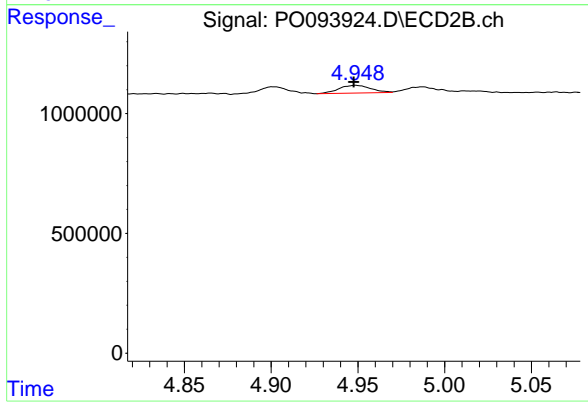
#5 AR-1016-3

R.T.: 4.901 min
 Delta R.T.: -0.003 min
 Response: 333733
 Conc: 11.77 ng/ml



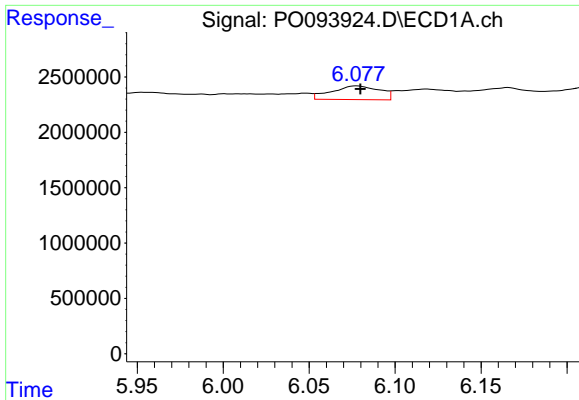
#6 AR-1016-4

R.T.: 5.780 min
 Delta R.T.: -0.002 min
 Response: 598203
 Conc: 8.14 ng/ml



#6 AR-1016-4

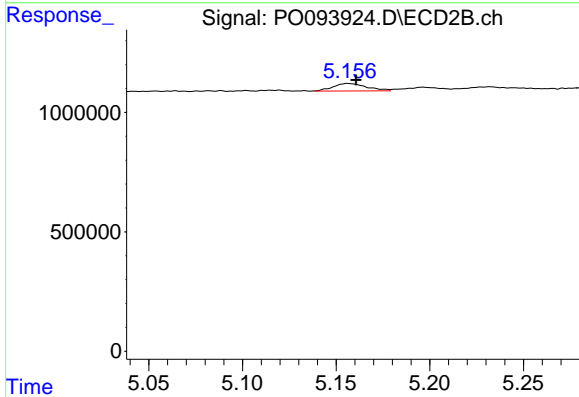
R.T.: 4.949 min
 Delta R.T.: 0.001 min
 Response: 410474
 Conc: 15.54 ng/ml



#7 AR-1016-5

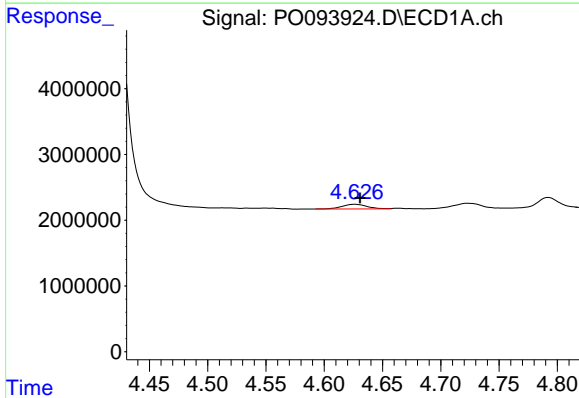
R.T.: 6.078 min
 Delta R.T.: -0.002 min
 Response: 2400733
 Conc: 28.36 ng/ml

Instrument :
 ECD_O
 ClientSampleId :



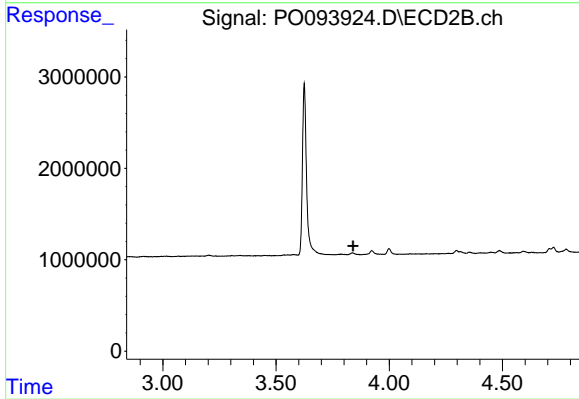
#7 AR-1016-5

R.T.: 5.157 min
 Delta R.T.: -0.004 min
 Response: 388223
 Conc: 11.86 ng/ml



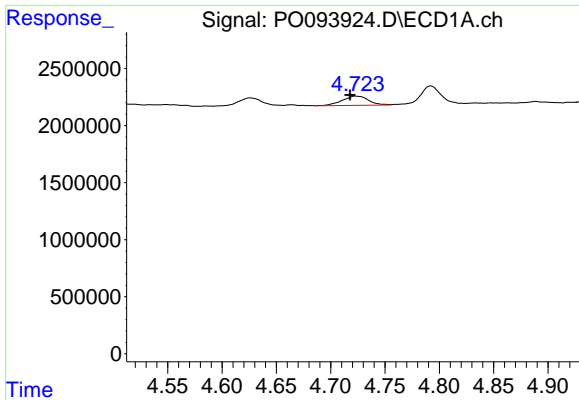
#8 AR-1221-1

R.T.: 4.626 min
 Delta R.T.: -0.004 min
 Response: 1080365
 Conc: 23.43 ng/ml



#8 AR-1221-1

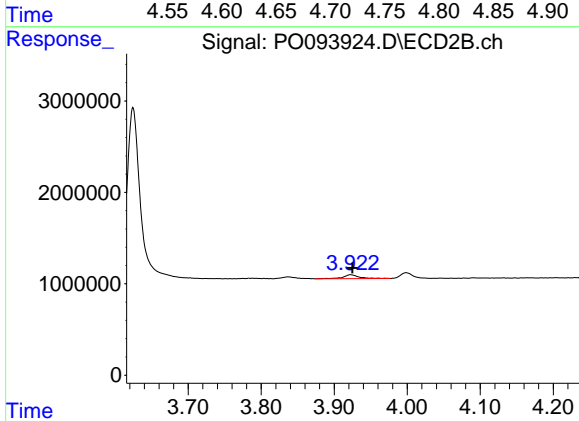
R.T.: 0.000 min
 Exp R.T. : 3.840 min
 Response: 0
 Conc: N.D.



#9 AR-1221-2

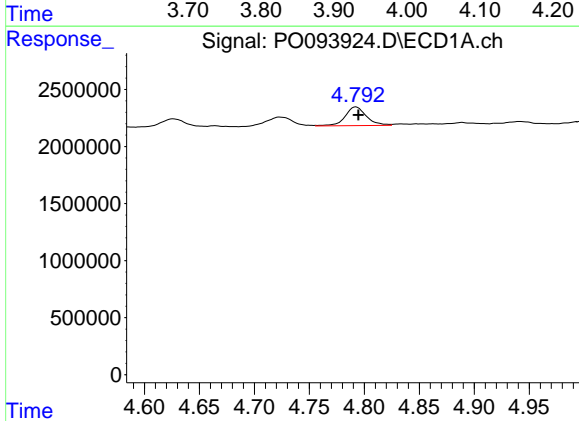
R.T.: 4.723 min
 Delta R.T.: 0.005 min
 Response: 1357105
 Conc: 39.54 ng/ml

Instrument :
 ECD_O
 ClientSampleId :



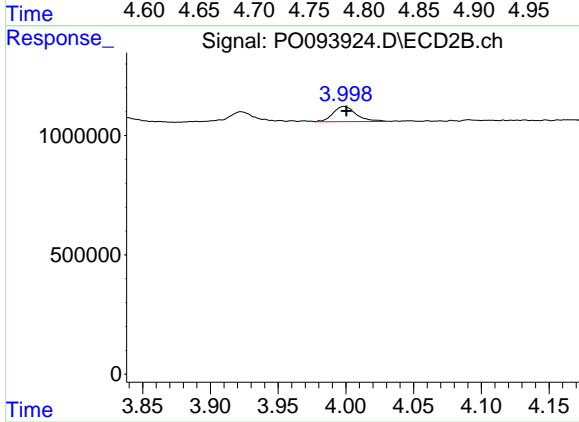
#9 AR-1221-2

R.T.: 3.923 min
 Delta R.T.: -0.002 min
 Response: 661936
 Conc: 56.08 ng/ml



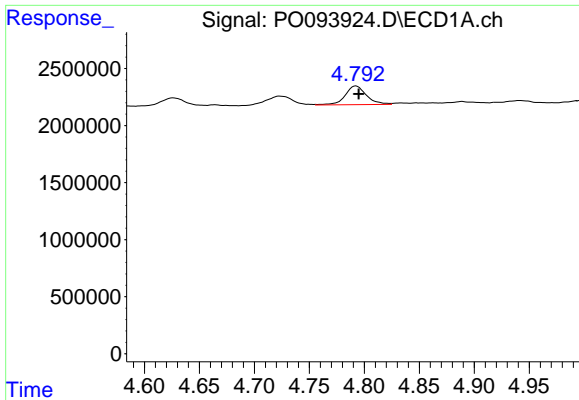
#10 AR-1221-3

R.T.: 4.792 min
 Delta R.T.: -0.002 min
 Response: 2196080
 Conc: 20.97 ng/ml



#10 AR-1221-3

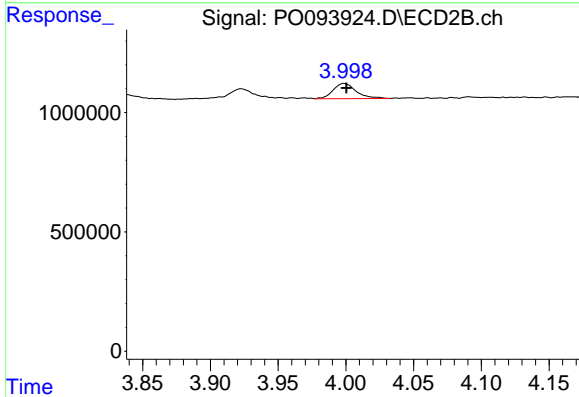
R.T.: 3.999 min
 Delta R.T.: -0.002 min
 Response: 754944
 Conc: 20.49 ng/ml



#11 AR-1232-1

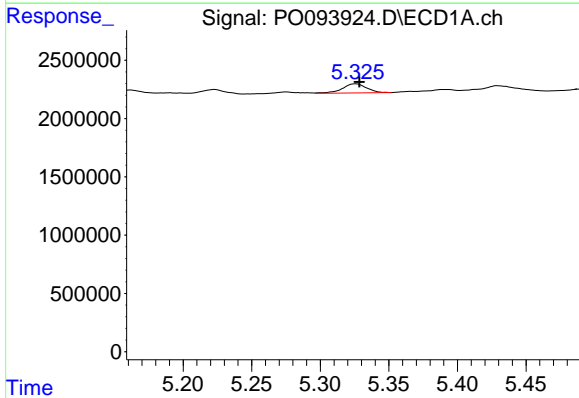
R.T.: 4.792 min
 Delta R.T.: -0.002 min
 Response: 2196080
 Conc: 25.16 ng/ml

Instrument :
 ECD_O
 ClientSampleId :



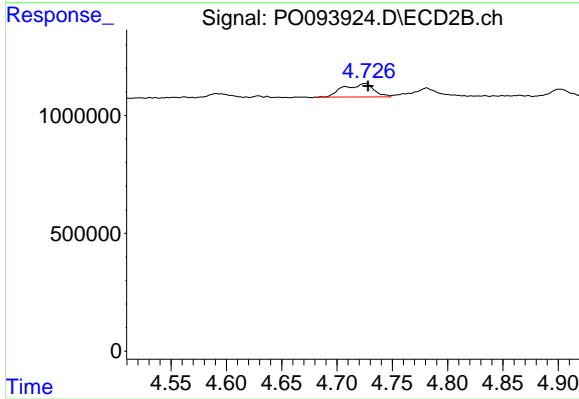
#11 AR-1232-1

R.T.: 3.999 min
 Delta R.T.: -0.002 min
 Response: 754944
 Conc: 24.17 ng/ml



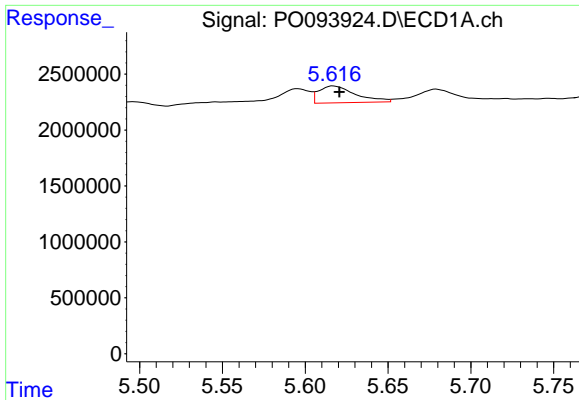
#12 AR-1232-2

R.T.: 5.326 min
 Delta R.T.: -0.002 min
 Response: 953442
 Conc: 22.29 ng/ml



#12 AR-1232-2

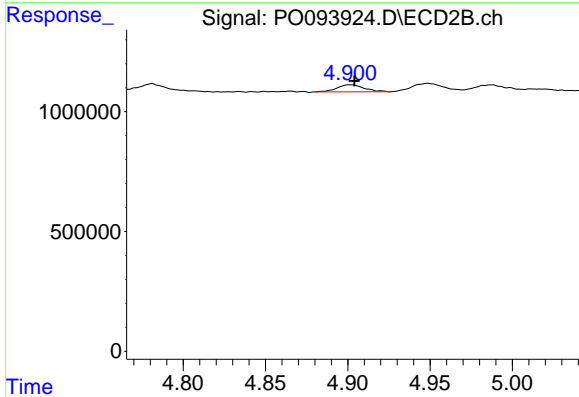
R.T.: 4.726 min
 Delta R.T.: -0.002 min
 Response: 1076167
 Conc: 40.65 ng/ml



#13 AR-1232-3

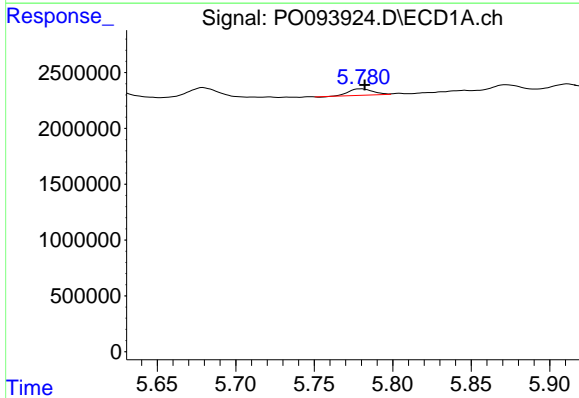
R.T.: 5.617 min
 Delta R.T.: -0.004 min
 Response: 2342989
 Conc: 31.90 ng/ml

Instrument :
 ECD_O
 ClientSampleId :



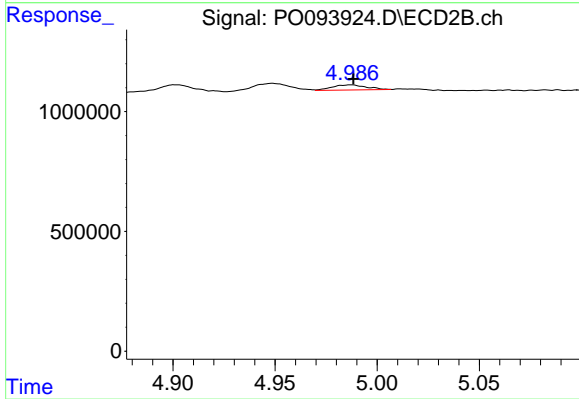
#13 AR-1232-3

R.T.: 4.901 min
 Delta R.T.: -0.003 min
 Response: 333733
 Conc: 25.30 ng/ml



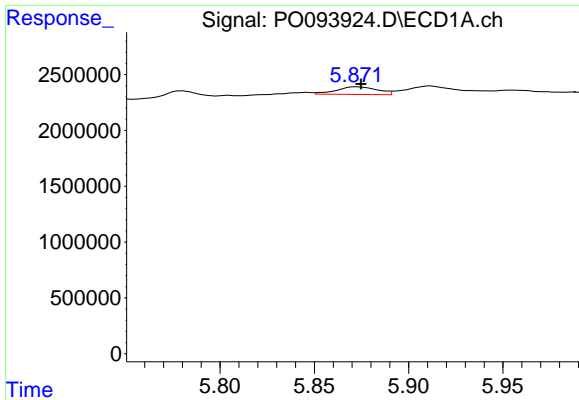
#14 AR-1232-4

R.T.: 5.780 min
 Delta R.T.: -0.002 min
 Response: 598203
 Conc: 17.38 ng/ml



#14 AR-1232-4

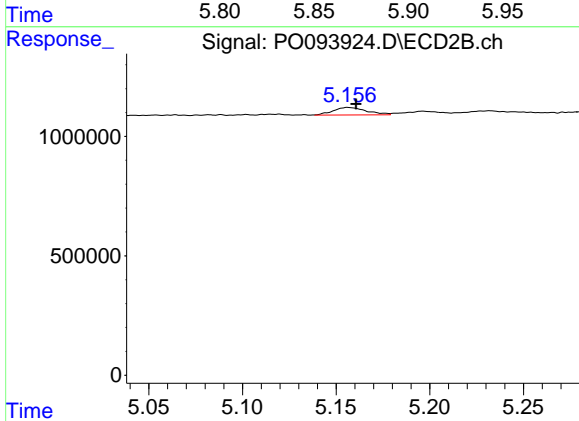
R.T.: 4.987 min
 Delta R.T.: -0.001 min
 Response: 246621
 Conc: 17.35 ng/ml



#15 AR-1232-5

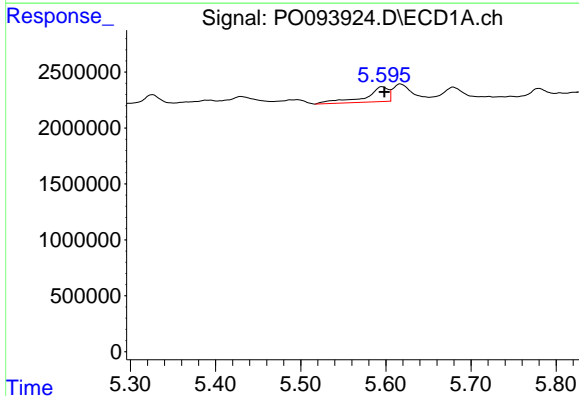
R.T.: 5.872 min
 Delta R.T.: -0.003 min
 Response: 1041345
 Conc: 32.79 ng/ml

Instrument :
 ECD_O
 ClientSampleId :



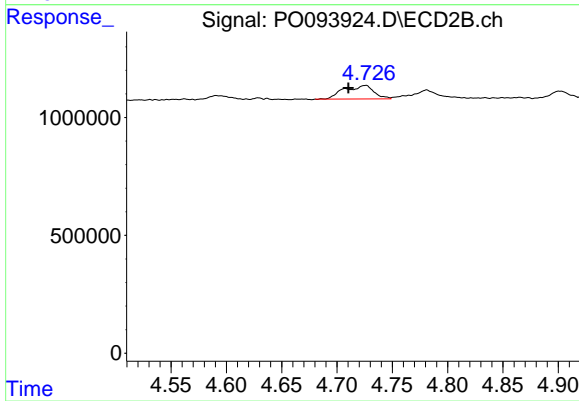
#15 AR-1232-5

R.T.: 5.157 min
 Delta R.T.: -0.004 min
 Response: 388223
 Conc: 25.13 ng/ml



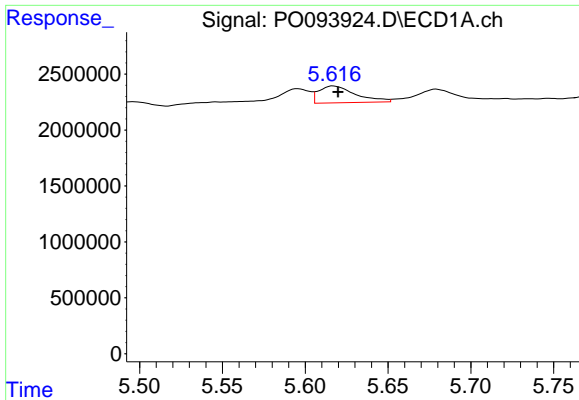
#16 AR-1242-1

R.T.: 5.596 min
 Delta R.T.: -0.003 min
 Response: 2537155
 Conc: 29.07 ng/ml



#16 AR-1242-1

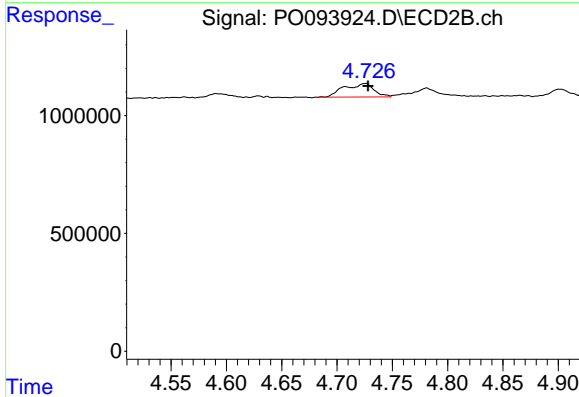
R.T.: 4.726 min
 Delta R.T.: 0.015 min
 Response: 1076167
 Conc: 34.97 ng/ml



#17 AR-1242-2

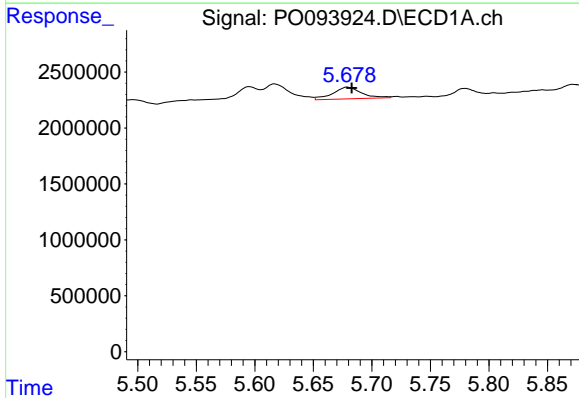
R.T.: 5.617 min
 Delta R.T.: -0.003 min
 Response: 2342989
 Conc: 17.62 ng/ml

Instrument :
 ECD_O
 ClientSampleId :



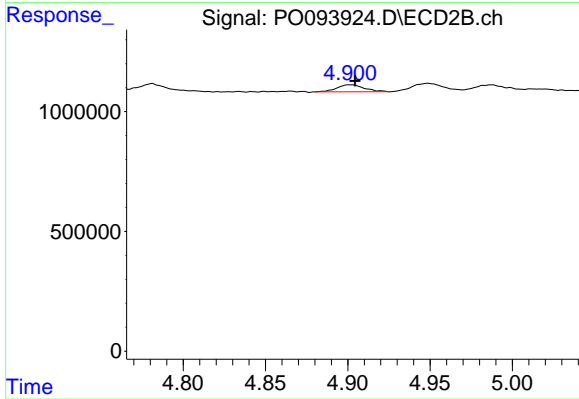
#17 AR-1242-2

R.T.: 4.726 min
 Delta R.T.: -0.002 min
 Response: 1076167
 Conc: 23.40 ng/ml



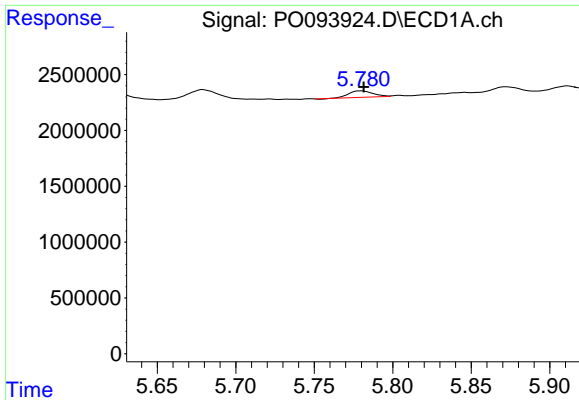
#18 AR-1242-3

R.T.: 5.679 min
 Delta R.T.: -0.004 min
 Response: 1781364
 Conc: 20.98 ng/ml



#18 AR-1242-3

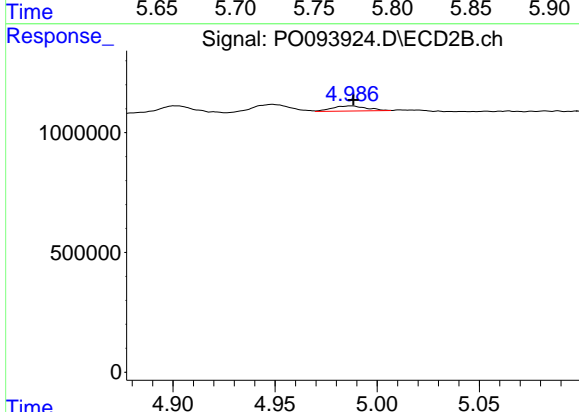
R.T.: 4.901 min
 Delta R.T.: -0.003 min
 Response: 333733
 Conc: 13.77 ng/ml



#19 AR-1242-4

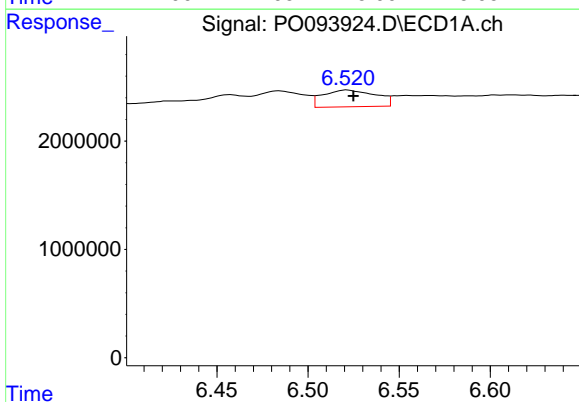
R.T.: 5.780 min
 Delta R.T.: -0.002 min
 Response: 598203
 Conc: 9.57 ng/ml

Instrument :
 ECD_O
 ClientSampleId :



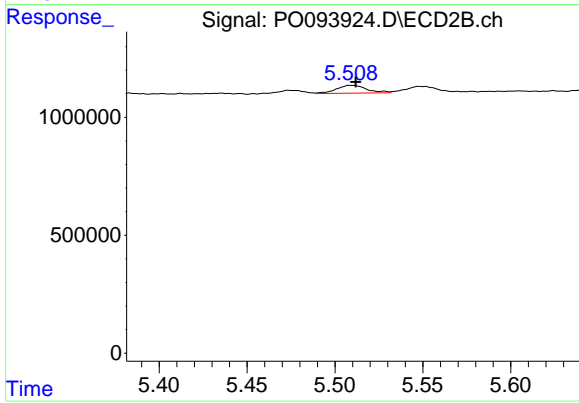
#19 AR-1242-4

R.T.: 4.987 min
 Delta R.T.: -0.001 min
 Response: 246621
 Conc: 8.78 ng/ml



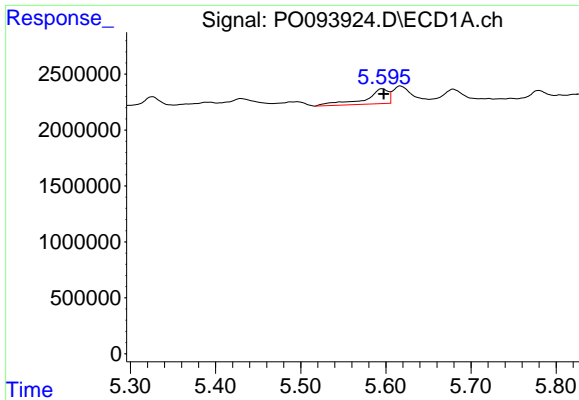
#20 AR-1242-5

R.T.: 6.521 min
 Delta R.T.: -0.004 min
 Response: 3115975
 Conc: 46.28 ng/ml



#20 AR-1242-5

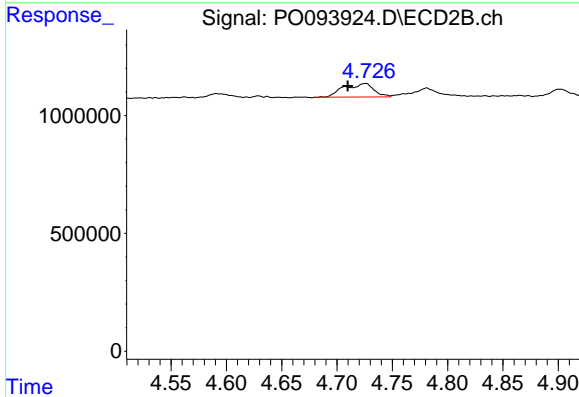
R.T.: 5.509 min
 Delta R.T.: -0.002 min
 Response: 402434
 Conc: 14.12 ng/ml



#21 AR-1248-1

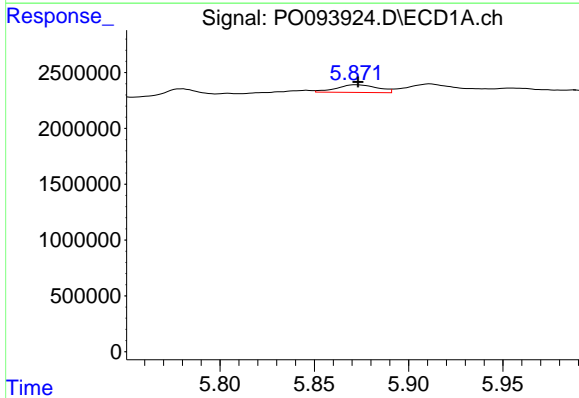
R.T.: 5.596 min
 Delta R.T.: -0.002 min
 Response: 2537155
 Conc: 37.71 ng/ml

Instrument :
 ECD_O
 ClientSampleId :



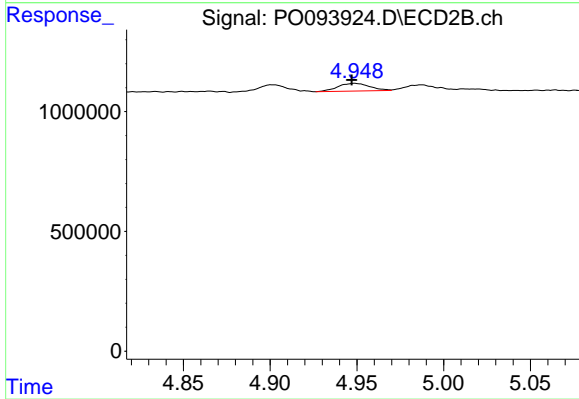
#21 AR-1248-1

R.T.: 4.726 min
 Delta R.T.: 0.016 min
 Response: 1076167
 Conc: 45.12 ng/ml



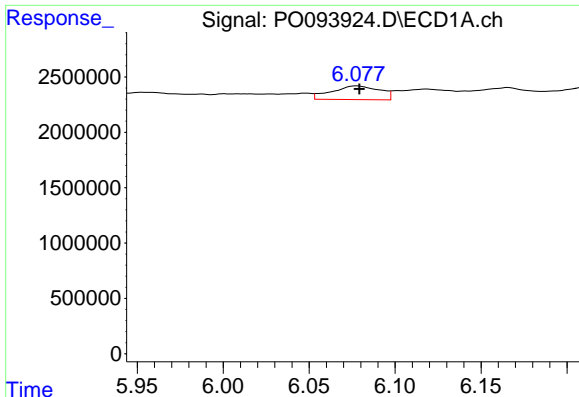
#22 AR-1248-2

R.T.: 5.872 min
 Delta R.T.: -0.001 min
 Response: 1041345
 Conc: 9.52 ng/ml



#22 AR-1248-2

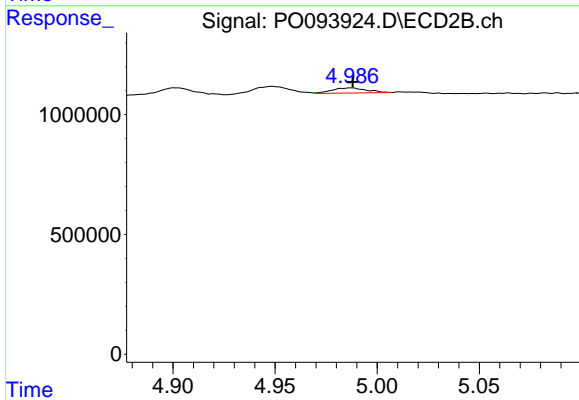
R.T.: 4.949 min
 Delta R.T.: 0.002 min
 Response: 410474
 Conc: 10.30 ng/ml



#23 AR-1248-3

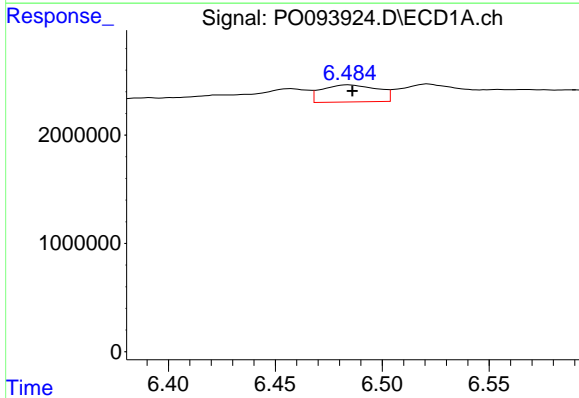
R.T.: 6.078 min
 Delta R.T.: -0.002 min
 Response: 2400733
 Conc: 19.89 ng/ml

Instrument :
 ECD_O
 ClientSampleId :



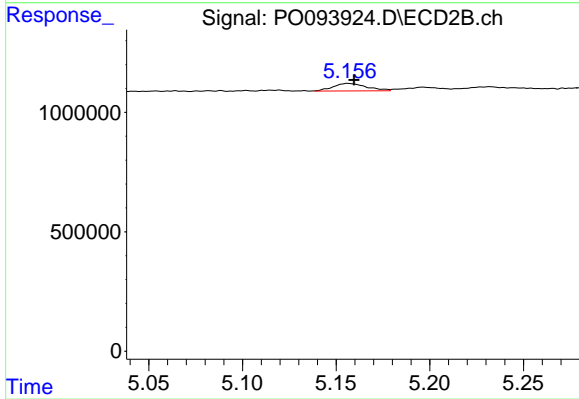
#23 AR-1248-3

R.T.: 4.987 min
 Delta R.T.: 0.000 min
 Response: 246621
 Conc: 5.91 ng/ml



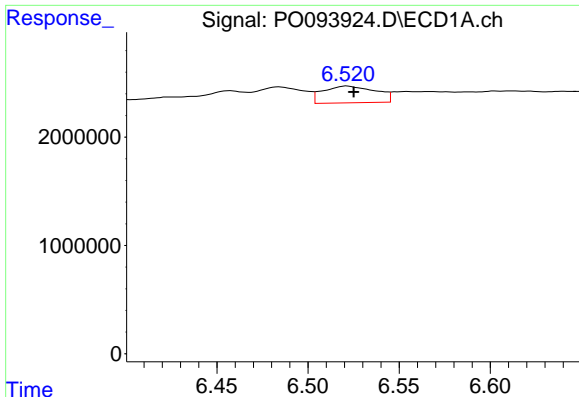
#24 AR-1248-4

R.T.: 6.484 min
 Delta R.T.: -0.002 min
 Response: 2872222
 Conc: 26.74 ng/ml



#24 AR-1248-4

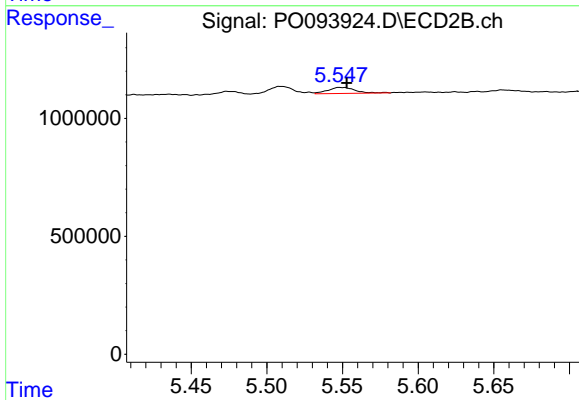
R.T.: 5.157 min
 Delta R.T.: -0.003 min
 Response: 388223
 Conc: 8.26 ng/ml



#25 AR-1248-5

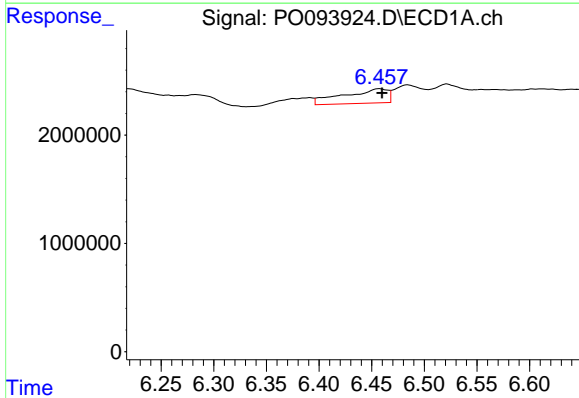
R.T.: 6.521 min
 Delta R.T.: -0.004 min
 Response: 3115975
 Conc: 26.86 ng/ml

Instrument :
 ECD_O
 ClientSampleId :



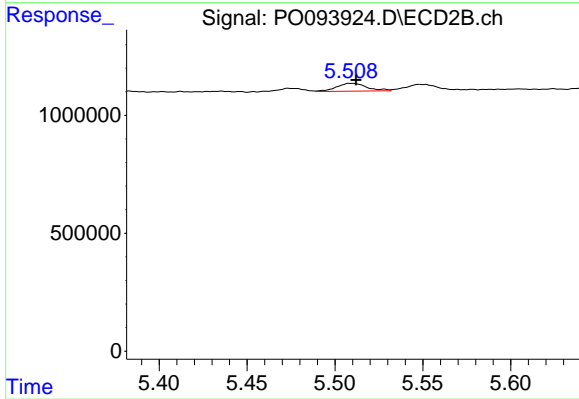
#25 AR-1248-5

R.T.: 5.549 min
 Delta R.T.: -0.004 min
 Response: 326644
 Conc: 8.75 ng/ml



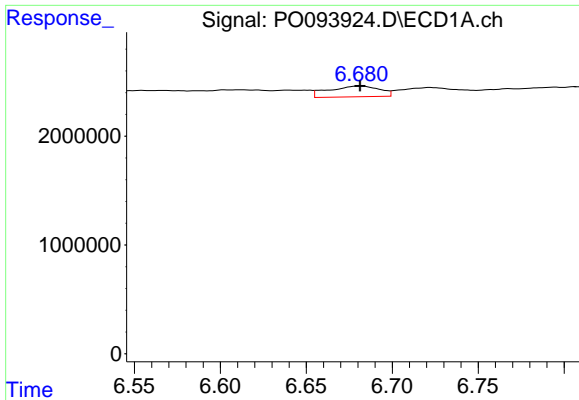
#26 AR-1254-1

R.T.: 6.457 min
 Delta R.T.: -0.003 min
 Response: 3874922
 Conc: 28.57 ng/ml



#26 AR-1254-1

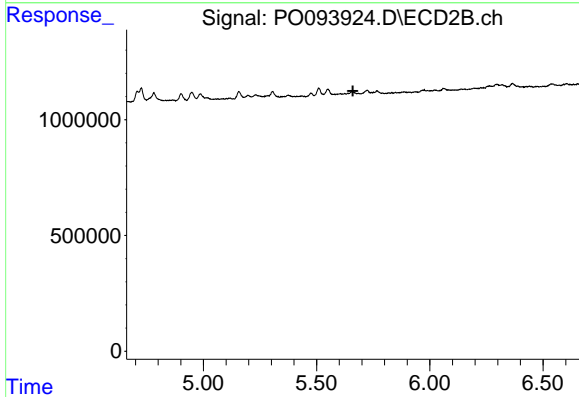
R.T.: 5.509 min
 Delta R.T.: -0.003 min
 Response: 402434
 Conc: 5.89 ng/ml



#27 AR-1254-2

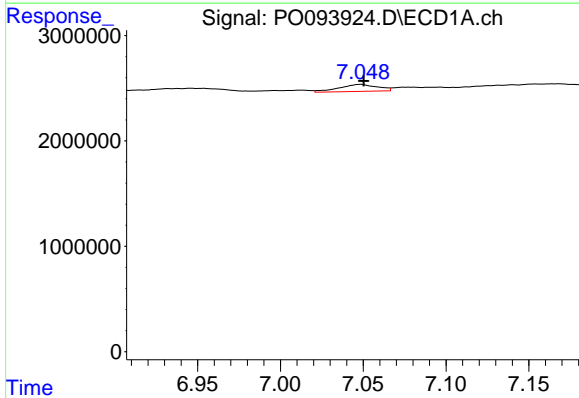
R.T.: 6.682 min
 Delta R.T.: 0.000 min
 Response: 2024745
 Conc: 10.36 ng/ml

Instrument :
 ECD_O
 ClientSampleId :



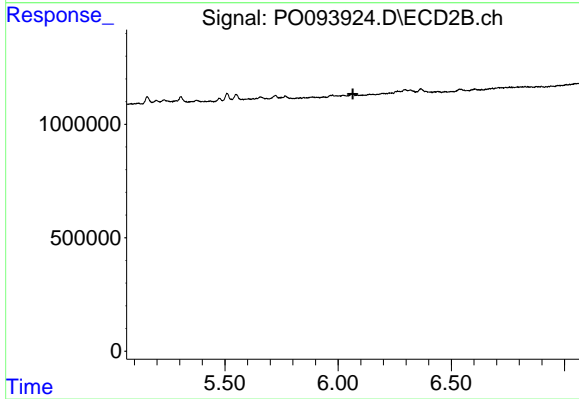
#27 AR-1254-2

R.T.: 0.000 min
 Exp R.T. : 5.660 min
 Response: 0
 Conc: N.D.



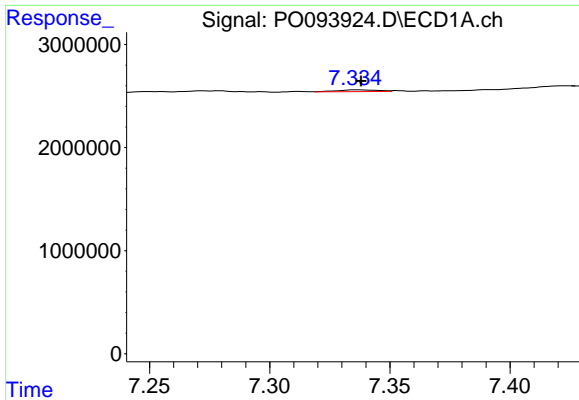
#28 AR-1254-3

R.T.: 7.049 min
 Delta R.T.: -0.002 min
 Response: 1077967
 Conc: 5.83 ng/ml



#28 AR-1254-3

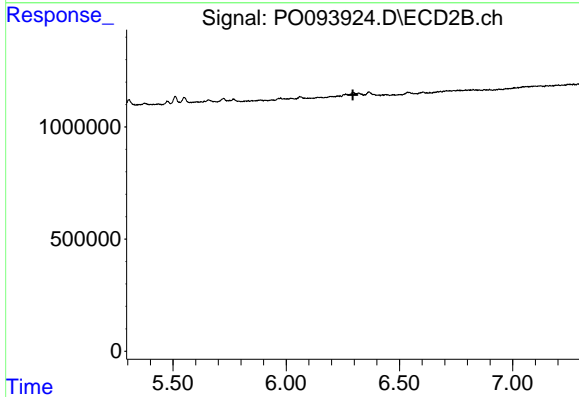
R.T.: 0.000 min
 Exp R.T. : 6.065 min
 Response: 0
 Conc: N.D.



#29 AR-1254-4

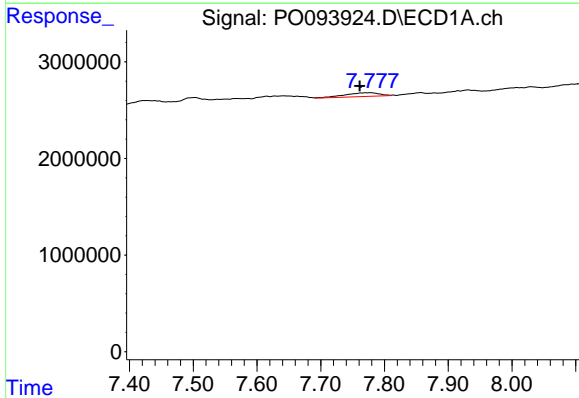
R.T.: 7.336 min
 Delta R.T.: -0.002 min
 Response: 189763
 Conc: 1.87 ng/ml

Instrument :
 ECD_O
 ClientSampleId :



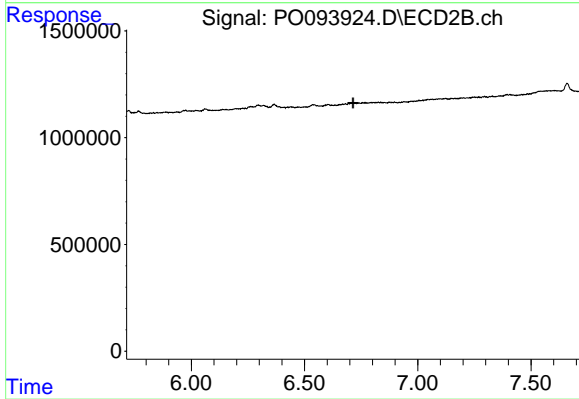
#29 AR-1254-4

R.T.: 0.000 min
 Exp R.T. : 6.295 min
 Response: 0
 Conc: N.D.



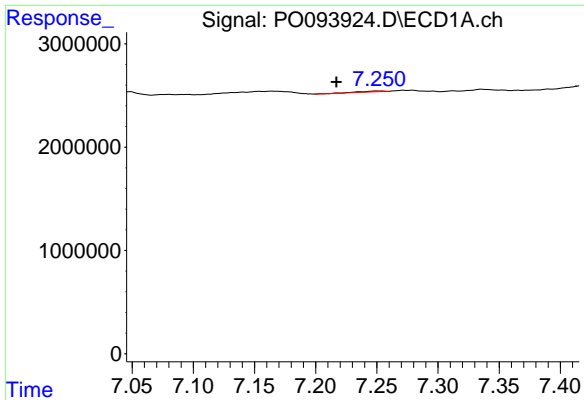
#30 AR-1254-5

R.T.: 7.778 min
 Delta R.T.: 0.017 min
 Response: 1469039
 Conc: 10.83 ng/ml



#30 AR-1254-5

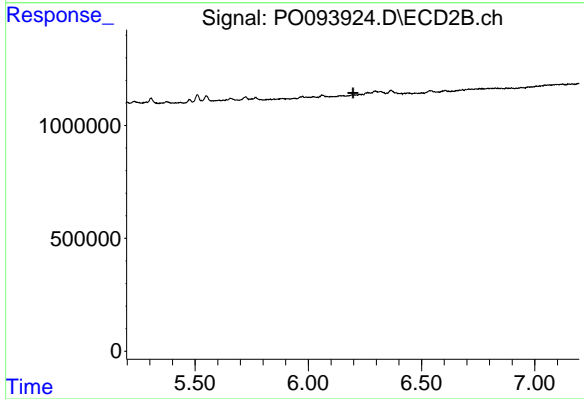
R.T.: 0.000 min
 Exp R.T. : 6.714 min
 Response: 0
 Conc: N.D.



#31 AR-1260-1

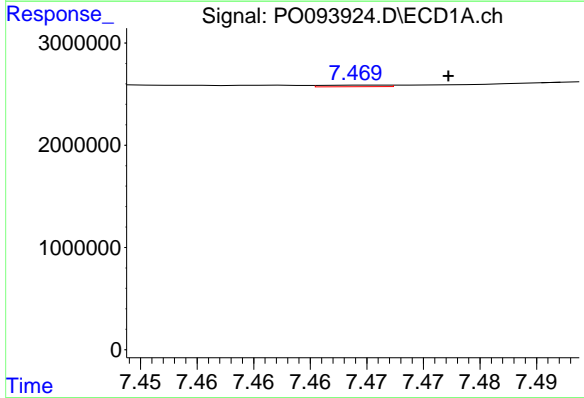
R.T.: 7.250 min
 Delta R.T.: 0.033 min
 Response: 203412
 Conc: 1.39 ng/ml

Instrument :
 ECD_O
 ClientSampleId :



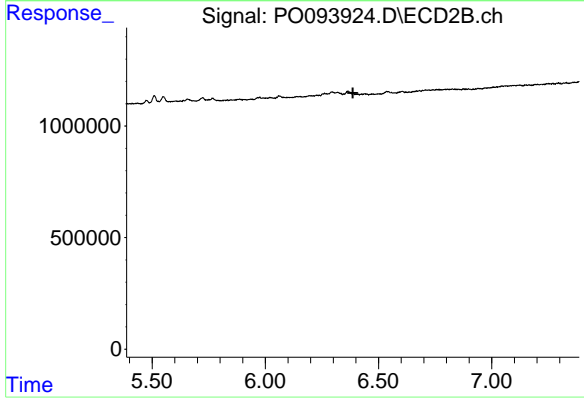
#31 AR-1260-1

R.T.: 0.000 min
 Exp R.T. : 6.197 min
 Response: 0
 Conc: N.D.



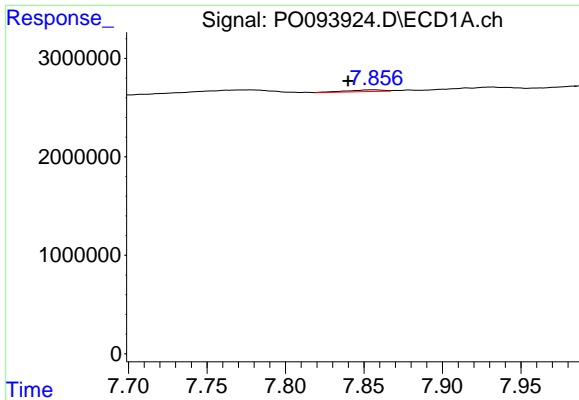
#32 AR-1260-2

R.T.: 7.470 min
 Delta R.T.: -0.007 min
 Response: 61002
 Conc: 0.38 ng/ml



#32 AR-1260-2

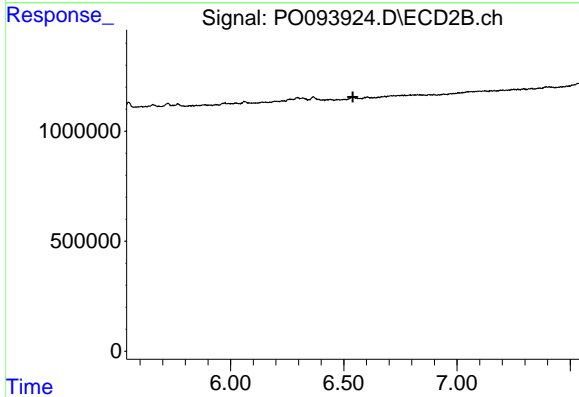
R.T.: 0.000 min
 Exp R.T. : 6.387 min
 Response: 0
 Conc: N.D.



#33 AR-1260-3

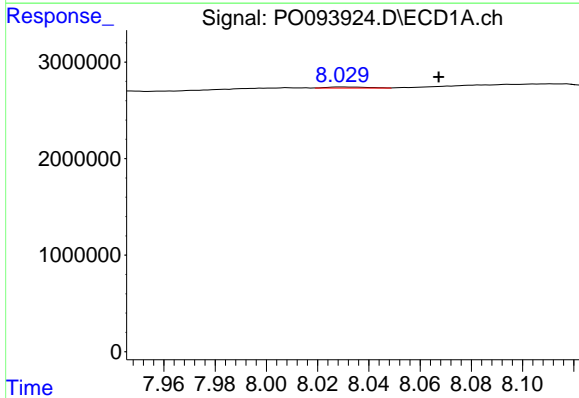
R.T.: 7.857 min
 Delta R.T.: 0.017 min
 Response: 268592
 Conc: 2.02 ng/ml

Instrument :
 ECD_O
 ClientSampleId :



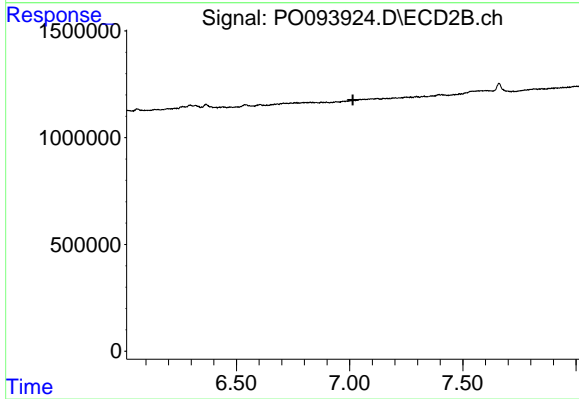
#33 AR-1260-3

R.T.: 0.000 min
 Exp R.T. : 6.540 min
 Response: 0
 Conc: N.D.



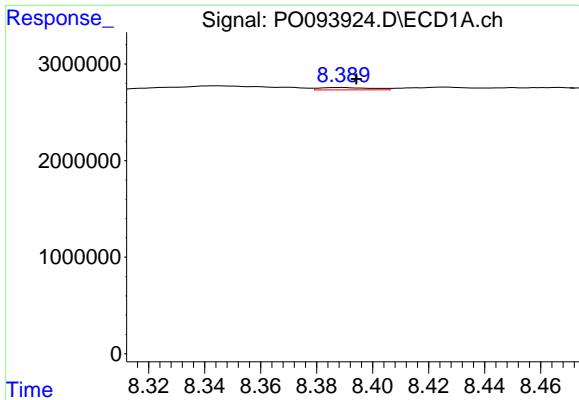
#34 AR-1260-4

R.T.: 8.029 min
 Delta R.T.: -0.038 min
 Response: 122817
 Conc: 0.89 ng/ml



#34 AR-1260-4

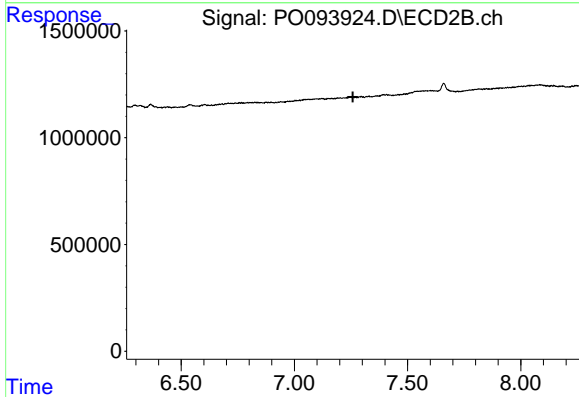
R.T.: 0.000 min
 Exp R.T. : 7.014 min
 Response: 0
 Conc: N.D.



#35 AR-1260-5

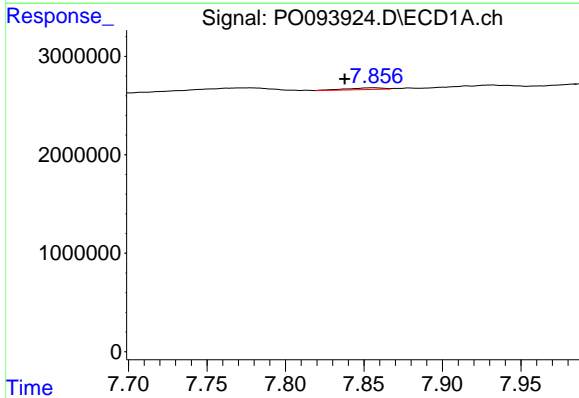
R.T.: 8.389 min
 Delta R.T.: -0.005 min
 Response: 311997
 Conc: 1.43 ng/ml

Instrument :
 ECD_O
 ClientSampleId :



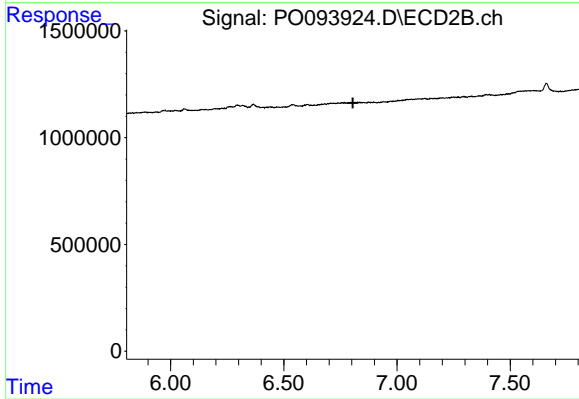
#35 AR-1260-5

R.T.: 0.000 min
 Exp R.T. : 7.258 min
 Response: 0
 Conc: N.D.



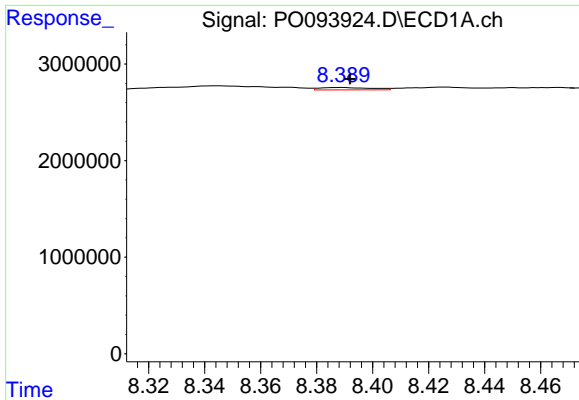
#36 AR-1262-1

R.T.: 7.857 min
 Delta R.T.: 0.019 min
 Response: 268592
 Conc: 1.57 ng/ml



#36 AR-1262-1

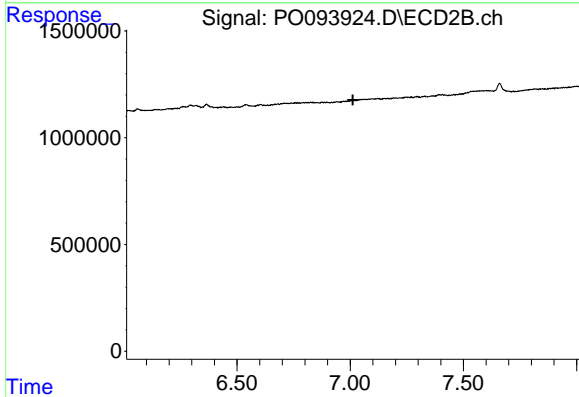
R.T.: 0.000 min
 Exp R.T. : 6.805 min
 Response: 0
 Conc: N.D.



#37 AR-1262-2

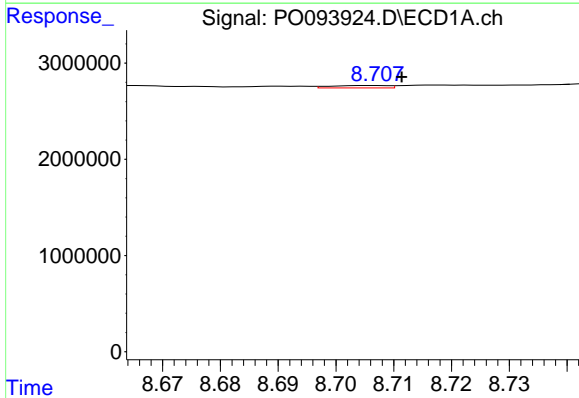
R.T.: 8.389 min
 Delta R.T.: -0.003 min
 Response: 311997
 Conc: 1.34 ng/ml

Instrument :
 ECD_O
 ClientSampleId :



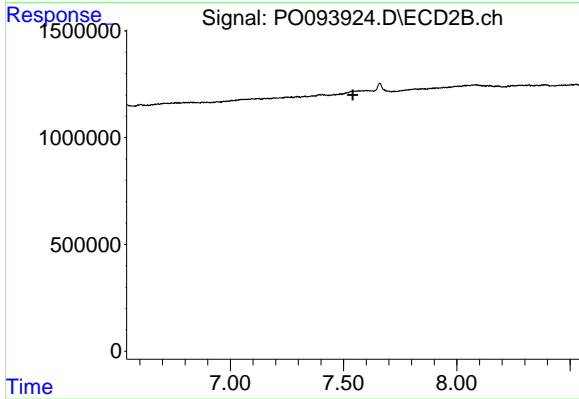
#37 AR-1262-2

R.T.: 0.000 min
 Exp R.T. : 7.012 min
 Response: 0
 Conc: N.D.



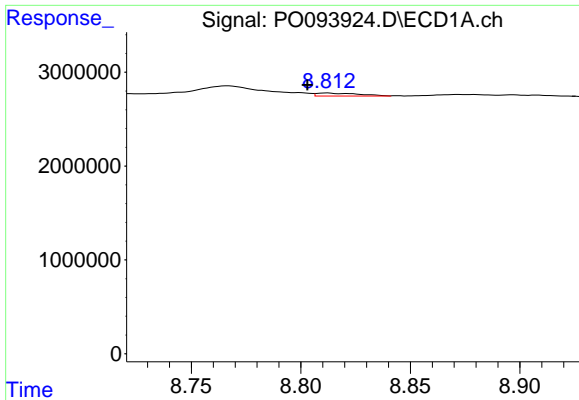
#38 AR-1262-3

R.T.: 8.707 min
 Delta R.T.: -0.005 min
 Response: 170240
 Conc: 1.04 ng/ml



#38 AR-1262-3

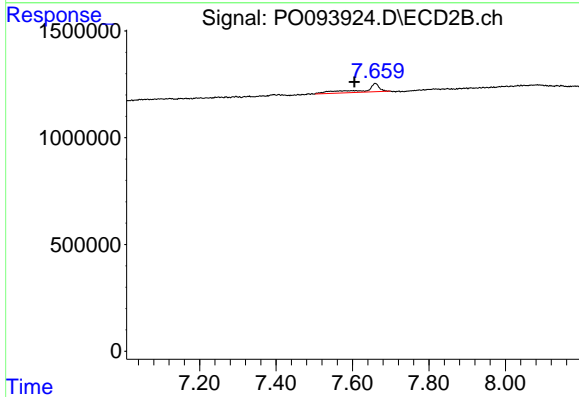
R.T.: 0.000 min
 Exp R.T. : 7.541 min
 Response: 0
 Conc: N.D.



#39 AR-1262-4

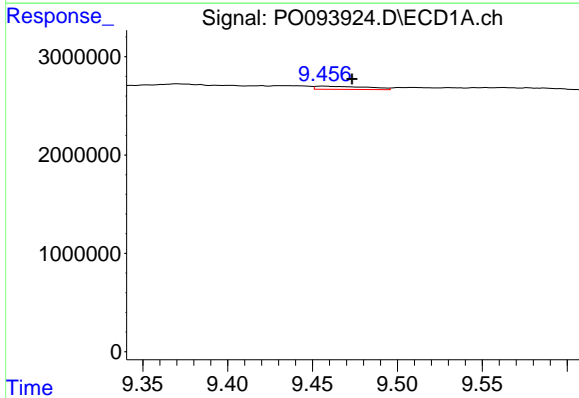
R.T.: 8.812 min
 Delta R.T.: 0.009 min
 Response: 416765
 Conc: 4.16 ng/ml

Instrument :
 ECD_O
 ClientSampleId :



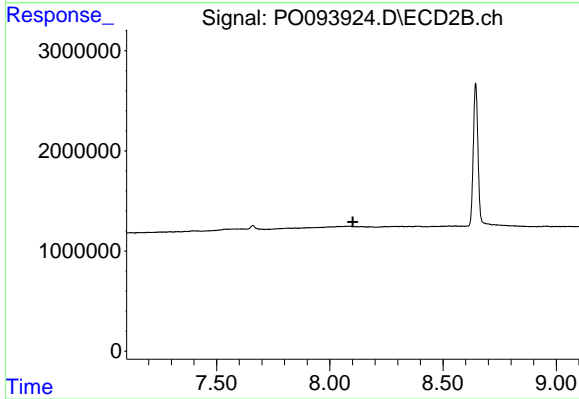
#39 AR-1262-4

R.T.: 7.659 min
 Delta R.T.: 0.055 min
 Response: 1221466
 Conc: 14.73 ng/ml



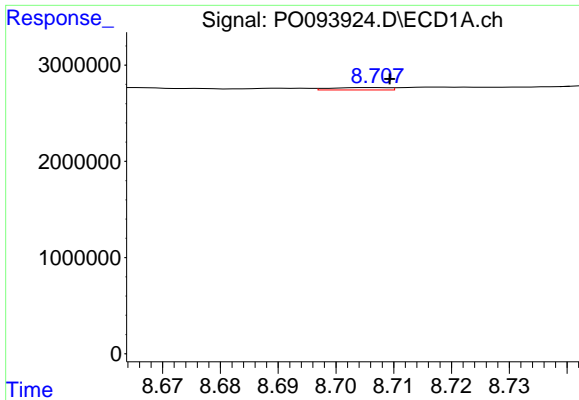
#40 AR-1262-5

R.T.: 9.457 min
 Delta R.T.: -0.017 min
 Response: 677897
 Conc: 8.42 ng/ml



#40 AR-1262-5

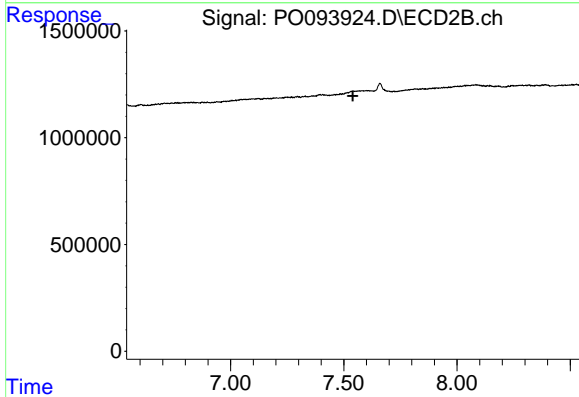
R.T.: 0.000 min
 Exp R.T. : 8.102 min
 Response: 0
 Conc: N.D.



#41 AR-1268-1

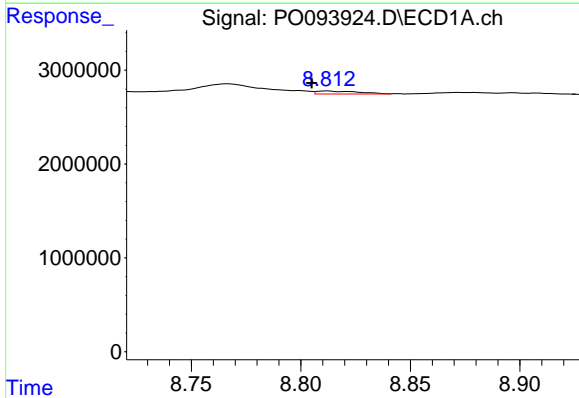
R.T.: 8.707 min
 Delta R.T.: -0.003 min
 Response: 170240
 Conc: 0.51 ng/ml

Instrument :
 ECD_O
 ClientSampleId :



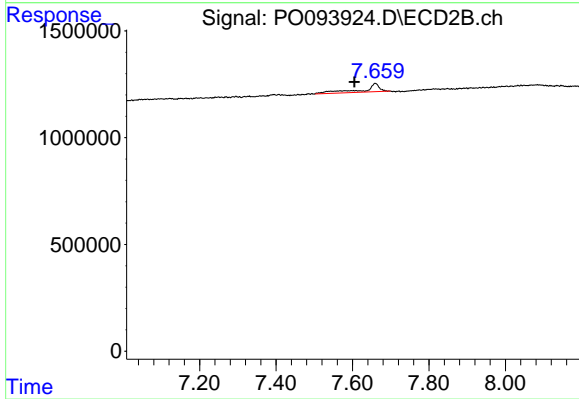
#41 AR-1268-1

R.T.: 0.000 min
 Exp R.T. : 7.540 min
 Response: 0
 Conc: N.D.



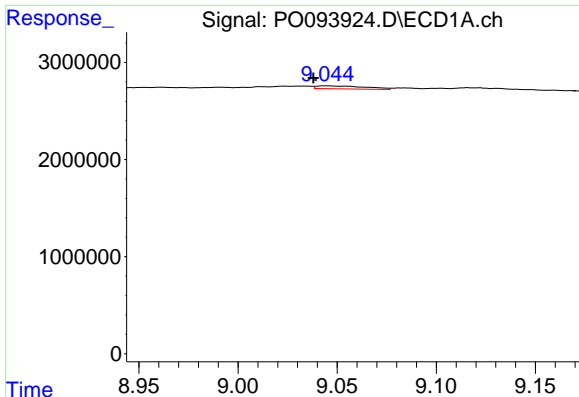
#42 AR-1268-2

R.T.: 8.812 min
 Delta R.T.: 0.007 min
 Response: 416765
 Conc: 1.29 ng/ml



#42 AR-1268-2

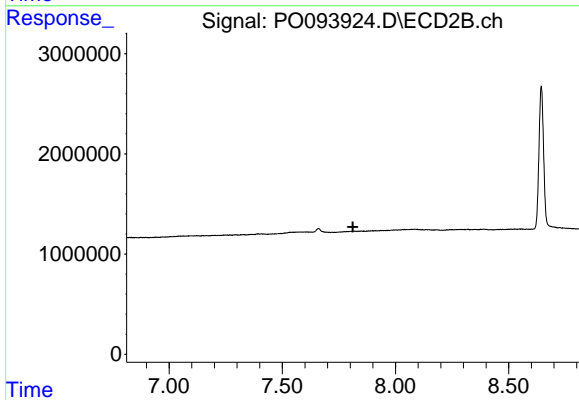
R.T.: 7.659 min
 Delta R.T.: 0.055 min
 Response: 1221466
 Conc: 8.99 ng/ml



#43 AR-1268-3

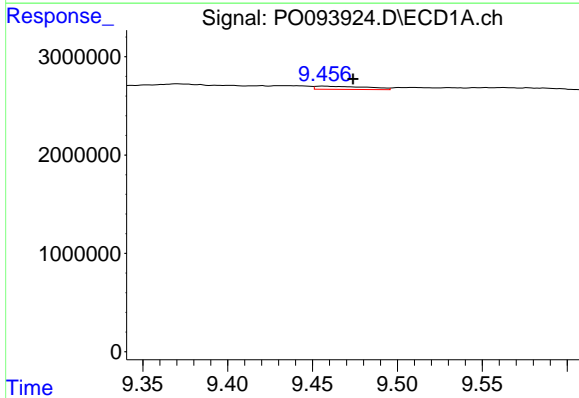
R.T.: 9.044 min
 Delta R.T.: 0.006 min
 Response: 527204
 Conc: 1.86 ng/ml

Instrument :
 ECD_O
 ClientSampleId :



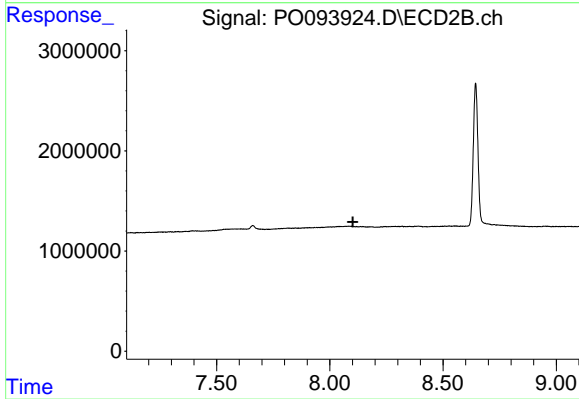
#43 AR-1268-3

R.T.: 0.000 min
 Exp R.T. : 7.812 min
 Response: 0
 Conc: N.D.



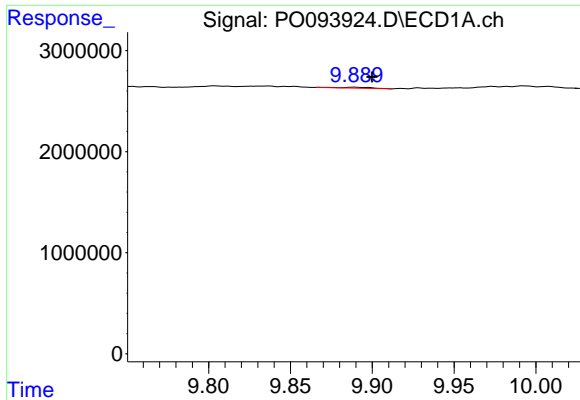
#44 AR-1268-4

R.T.: 9.457 min
 Delta R.T.: -0.017 min
 Response: 677897
 Conc: 7.01 ng/ml



#44 AR-1268-4

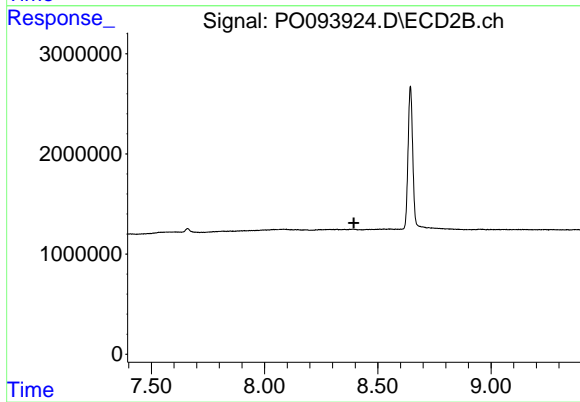
R.T.: 0.000 min
 Exp R.T. : 8.102 min
 Response: 0
 Conc: N.D.



#45 AR-1268-5

R.T.: 9.889 min
Delta R.T.: -0.011 min
Response: 113854
Conc: 0.14 ng/ml

Instrument :
ECD_O
ClientSampleId :



#45 AR-1268-5

R.T.: 0.000 min
Exp R.T. : 8.394 min
Response: 0
Conc: N.D.