

Data Path : Z:\pestpcbsrv\HPCHEM1\ECD\_O\Data\P0040723\  
 Data File : P0093930.D  
 Signal(s) : Signal #1: ECD1A.ch Signal #2: ECD2B.ch  
 Acq On : 07 Apr 2023 16:01  
 Operator : YP/AJ  
 Sample : AR1660CCC500  
 Misc :  
 ALS Vial : 3 Sample Multiplier: 1

Instrument :  
 ECD\_O  
 ClientSampleId :

Integration File signal 1: autoint1.e  
 Integration File signal 2: autoint2.e  
 Quant Time: Apr 07 22:39:54 2023  
 Quant Method : Z:\pestpcbsrv\HPCHEM1\ECD\_O\methods\P0040323.M  
 Quant Title : GC EXTRACTABLES  
 QLast Update : Tue Apr 04 06:20:55 2023  
 Response via : Initial Calibration  
 Integrator: ChemStation

Volume Inj. : 2 µl  
 Signal #1 Phase : ZB-MR1 Signal #2 Phase: ZB-MR2  
 Signal #1 Info : 30Mx0.32mmx 0.50µ Signal #2 Info : 30M x 0.32mm x 0.25µm

Compound	RT#1	RT#2	Resp#1	Resp#2	ng/ml	ng/ml
System Monitoring Compounds						
1) SA Tetrachlo...	4.420	3.624	161.5E6	61031103	43.196	47.927
2) SA Decachlor...	10.242	8.643	113.2E6	48341682	50.616	48.352
Target Compounds						
3) L1 AR-1016-1	5.595	4.707	49528247	18574070	484.319	523.469
4) L1 AR-1016-2	5.618	4.725	72885407	28145500	467.639	521.105
5) L1 AR-1016-3	5.680	4.902	46357259	14301247	470.001	504.570
6) L1 AR-1016-4	5.779	4.944	35052775	12669795	476.723	479.813
7) L1 AR-1016-5	6.076	5.157	38639625	16851787	456.396	515.007
8) L2 AR-1221-1	4.624	3.836	5774917	2063942	125.216	131.807
9) L2 AR-1221-2	4.716	3.922	8354509	3136287	243.383	265.732
10) L2 AR-1221-3	4.792	3.998	31226964	12288615	298.150	333.587
11) L3 AR-1232-1	4.792	3.998	31226964	12288615	357.792	393.353
12) L3 AR-1232-2	5.325	4.725	39745976	28145500	929.402	1063.154
13) L3 AR-1232-3	5.618	4.902	72885407	14301247	992.231	1084.319
14) L3 AR-1232-4	5.779	4.986	35052775	15701871	1018.318	1104.910
15) L3 AR-1232-5	5.872	5.157	30830233	16851787	970.653	1090.834
16) L4 AR-1242-1	5.595	4.707	49528247	18574070	567.436	603.591
17) L4 AR-1242-2	5.618	4.725	72885407	28145500	548.153	611.938
18) L4 AR-1242-3	5.680	4.902	46357259	14301247	546.102	590.126
19) L4 AR-1242-4	5.779	4.986	35052775	15701871	561.014	559.309
20) L4 AR-1242-5	6.523	5.509	10919452	15848638	162.178	555.880 #
21) L5 AR-1248-1	5.595	4.707	49528247	18574070	736.128	778.736
22) L5 AR-1248-2	5.872	4.944	30830233	12669795	281.846	318.072
23) L5 AR-1248-3	6.076	4.986	38639625	15701871	320.075	376.192
24) L5 AR-1248-4	6.483	5.157	11519789	16851787	107.263	358.365 #
25) L5 AR-1248-5	6.523	5.550	10919452	3608384	94.114	96.652
26) L6 AR-1254-1	6.457	5.509	32760283	15848638	241.547	231.863
27) L6 AR-1254-2	6.677	5.657	27569179	11717259	141.038	192.385 #
28) L6 AR-1254-3	7.047	6.078	11516569	21136011	62.338	232.039 #
29) L6 AR-1254-4	7.335	6.291	7028042	1559471	69.302	36.611 #
30) L6 AR-1254-5	7.757	6.709	82260649	36367471	606.622	504.031
31) L7 AR-1260-1	7.213	6.193	65878654	31443601	451.326	482.181
32) L7 AR-1260-2	7.472	6.382	73740763	36251269	460.724	499.164
33) L7 AR-1260-3	7.835	6.535	57880706	33005704	435.921	454.791
34) L7 AR-1260-4	8.062	7.008	63530717	27076961	461.225	487.585
35) L7 AR-1260-5	8.389	7.253	114.3E6	56789102	524.900	547.240
36) L8 AR-1262-1	7.835	6.802	57880706	15484053	338.836	442.552 #
37) L8 AR-1262-2	8.389	7.008	114.3E6	27076961	491.790	383.238
38) L8 AR-1262-3	8.719	7.537	74697776	14155888	456.014	282.930 #
39) L8 AR-1262-4	8.780	7.600	51516451	41470294	514.169	500.055
40) L8 AR-1262-5	9.469	8.097	32661408	13287391	405.802	408.458
41) L9 AR-1268-1	8.719	7.537	74697776	14155888	221.947	92.667 #

Data Path : Z:\pestpcbsrv\HPCHEM1\ECD\_0\Data\P0040723\  
 Data File : P0093930.D  
 Signal(s) : Signal #1: ECD1A.ch Signal #2: ECD2B.ch  
 Acq On : 07 Apr 2023 16:01  
 Operator : YP/AJ  
 Sample : AR1660CCC500  
 Misc :  
 ALS Vial : 3 Sample Multiplier: 1

Instrument :  
 ECD\_0  
 ClientSampleId :

Integration File signal 1: autoint1.e  
 Integration File signal 2: autoint2.e  
 Quant Time: Apr 07 22:39:54 2023  
 Quant Method : Z:\pestpcbsrv\HPCHEM1\ECD\_0\methods\P0040323.M  
 Quant Title : GC EXTRACTABLES  
 QLast Update : Tue Apr 04 06:20:55 2023  
 Response via : Initial Calibration  
 Integrator: ChemStation

Volume Inj. : 2 µl  
 Signal #1 Phase : ZB-MR1 Signal #2 Phase: ZB-MR2  
 Signal #1 Info : 30Mx0.32mmx 0.50µ Signal #2 Info : 30M x 0.32mm x 0.25µm

	Compound	RT#1	RT#2	Resp#1	Resp#2	ng/ml	ng/ml
42)	L9 AR-1268-2	8.780	7.600	51516451	41470294	160.071	305.238 #
43)	L9 AR-1268-3	9.034	7.807	1883261	692061	6.641	5.288
44)	L9 AR-1268-4	9.469	8.097	32661408	13287391	337.802	335.675
45)	L9 AR-1268-5	9.894	8.389	8755145	4022820	10.424	11.478

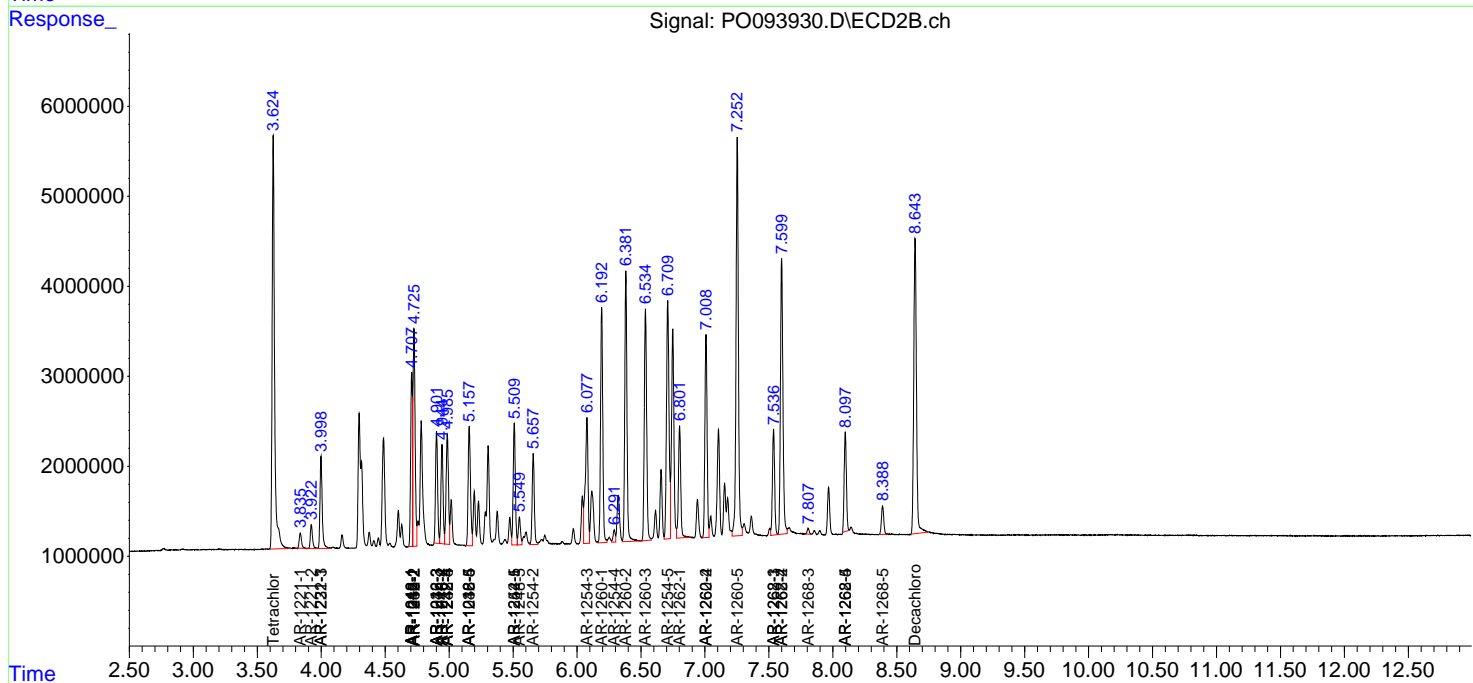
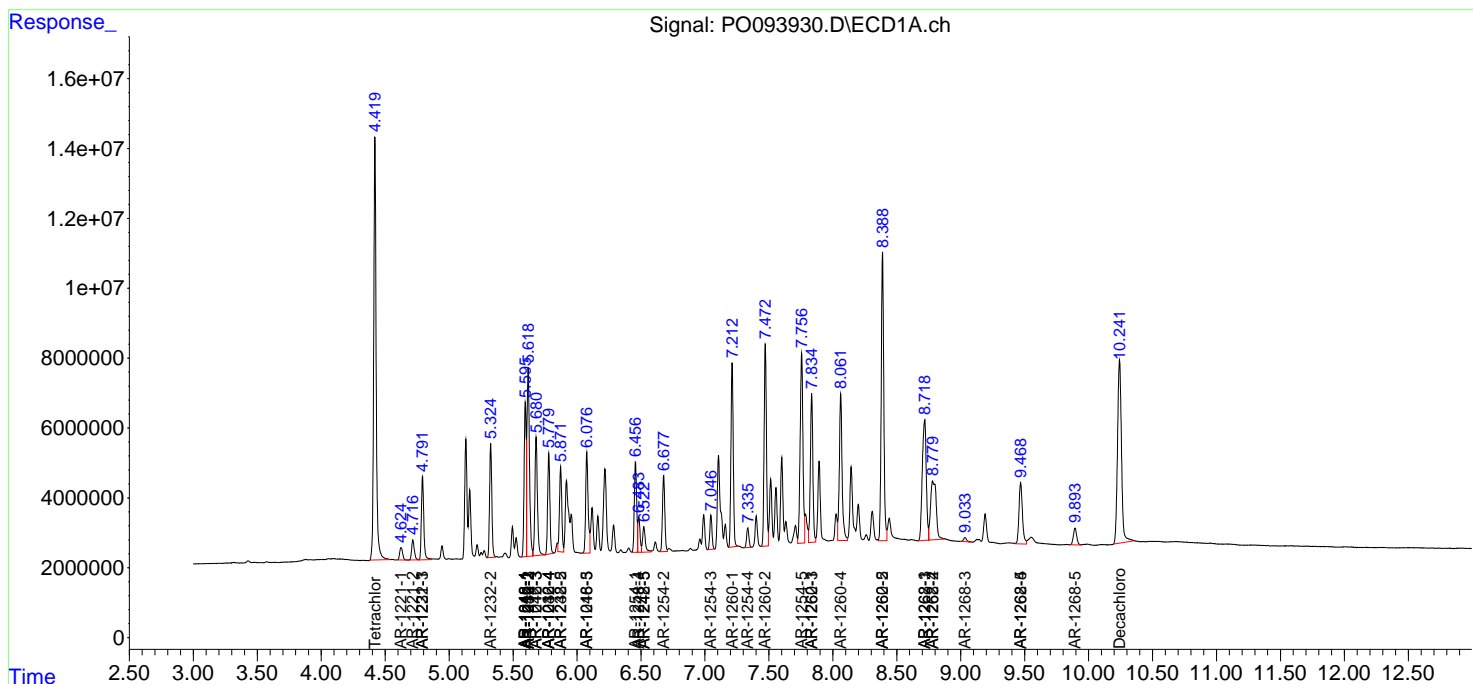
(f)=RT Delta > 1/2 Window (#)=Amounts differ by > 25% (m)=manual int.

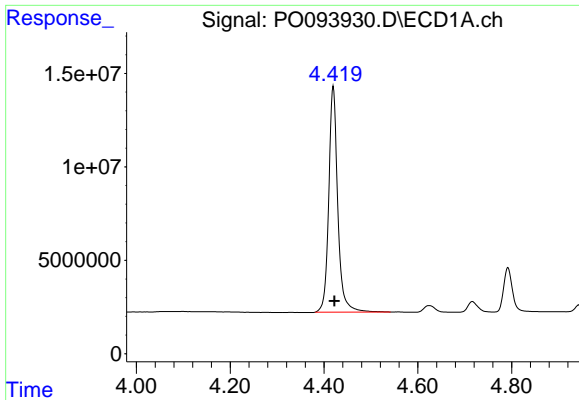
Data Path : Z:\pestpcbsrv\HPCHEM1\ECD\_O\Data\P0040723\  
 Data File : P0093930.D  
 Signal(s) : Signal #1: ECD1A.ch Signal #2: ECD2B.ch  
 Acq On : 07 Apr 2023 16:01  
 Operator : YP/AJ  
 Sample : AR1660CCC500  
 Misc :  
 ALS Vial : 3 Sample Multiplier: 1

Instrument :  
 ECD\_O  
 ClientSampleId :

Integration File signal 1: autoint1.e  
 Integration File signal 2: autoint2.e  
 Quant Time: Apr 07 22:39:54 2023  
 Quant Method : Z:\pestpcbsrv\HPCHEM1\ECD\_O\methods\P0040323.M  
 Quant Title : GC EXTRACTABLES  
 QLast Update : Tue Apr 04 06:20:55 2023  
 Response via : Initial Calibration  
 Integrator: ChemStation

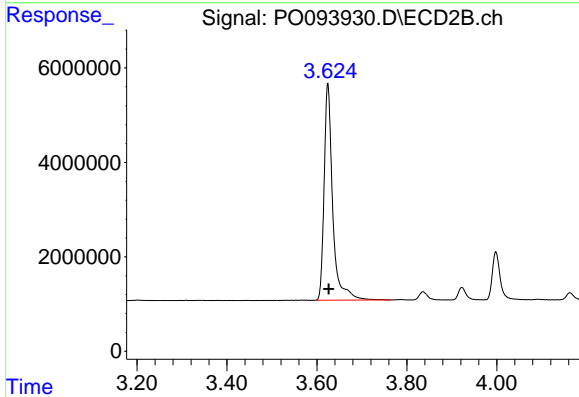
Volume Inj. : 2 µl  
 Signal #1 Phase : ZB-MR1 Signal #2 Phase: ZB-MR2  
 Signal #1 Info : 30Mx0.32mmx 0.50µ Signal #2 Info : 30M x 0.32mm x 0.25µm



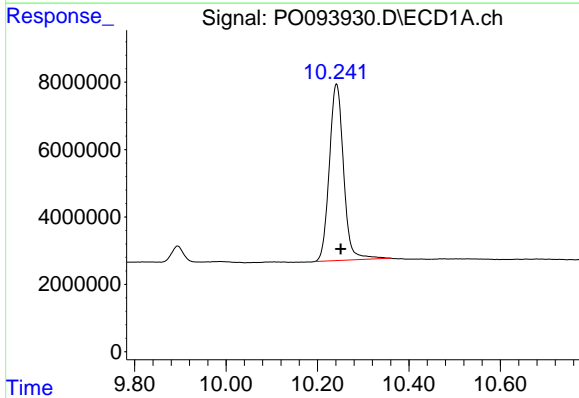


#1 Tetrachloro-m-xylene  
 R.T.: 4.420 min  
 Delta R.T.: -0.002 min  
 Response: 161475689  
 Conc: 43.20 ng/ml

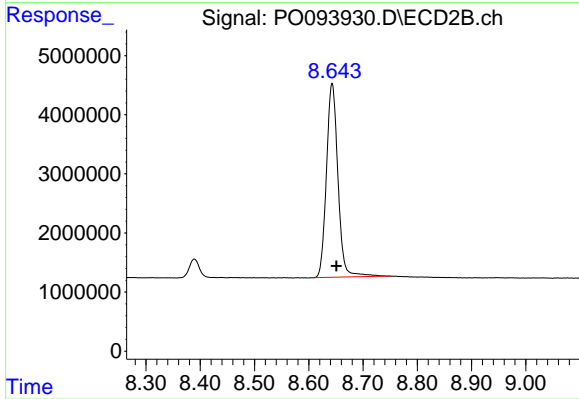
Instrument :  
 ECD\_O  
 ClientSampleId :



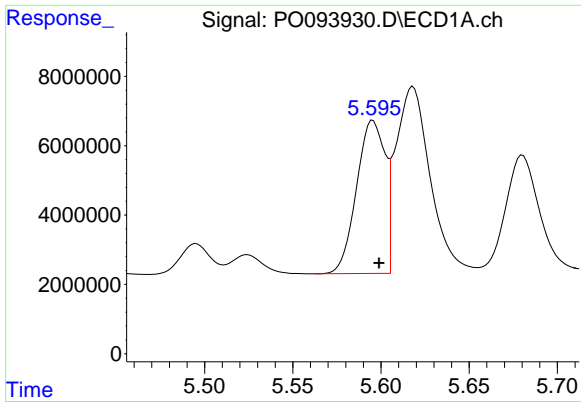
#1 Tetrachloro-m-xylene  
 R.T.: 3.624 min  
 Delta R.T.: -0.002 min  
 Response: 61031103  
 Conc: 47.93 ng/ml



#2 Decachlorobiphenyl  
 R.T.: 10.242 min  
 Delta R.T.: -0.009 min  
 Response: 113224875  
 Conc: 50.62 ng/ml



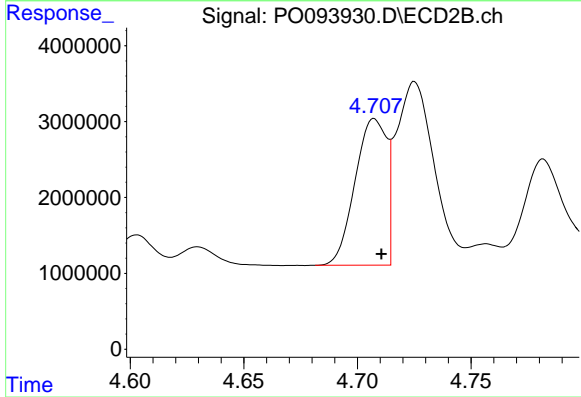
#2 Decachlorobiphenyl  
 R.T.: 8.643 min  
 Delta R.T.: -0.008 min  
 Response: 48341682  
 Conc: 48.35 ng/ml



#3 AR-1016-1

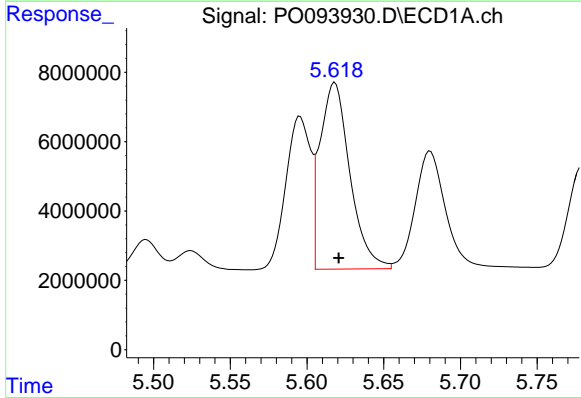
R.T.: 5.595 min  
 Delta R.T.: -0.003 min  
 Response: 49528247  
 Conc: 484.32 ng/ml

Instrument :  
 ECD\_O  
 ClientSampleId :



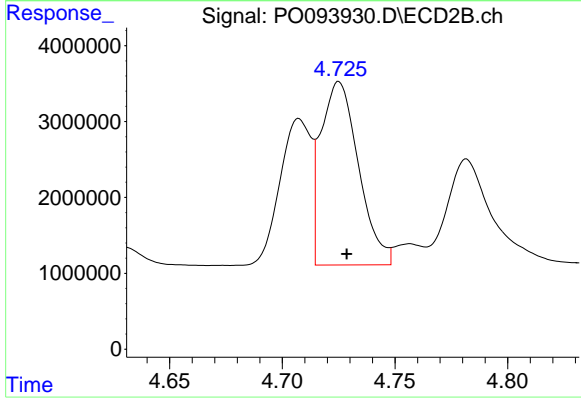
#3 AR-1016-1

R.T.: 4.707 min  
 Delta R.T.: -0.003 min  
 Response: 18574070  
 Conc: 523.47 ng/ml



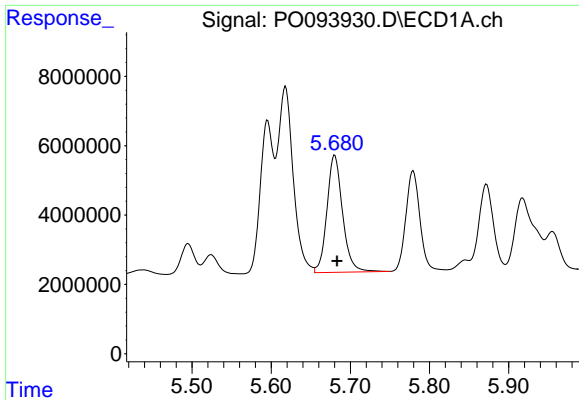
#4 AR-1016-2

R.T.: 5.618 min  
 Delta R.T.: -0.002 min  
 Response: 72885407  
 Conc: 467.64 ng/ml



#4 AR-1016-2

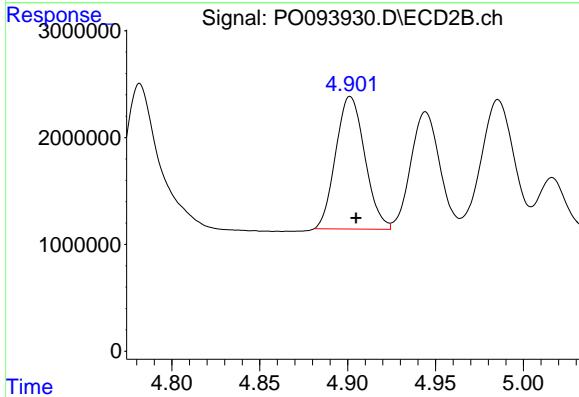
R.T.: 4.725 min  
 Delta R.T.: -0.003 min  
 Response: 28145500  
 Conc: 521.11 ng/ml



#5 AR-1016-3

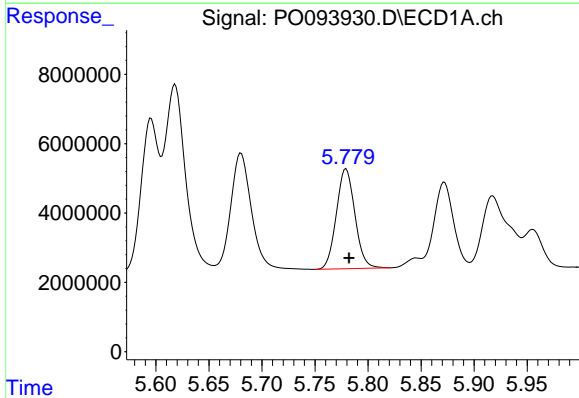
R.T.: 5.680 min  
 Delta R.T.: -0.003 min  
 Response: 46357259  
 Conc: 470.00 ng/ml

Instrument :  
 ECD\_O  
 ClientSampleId :



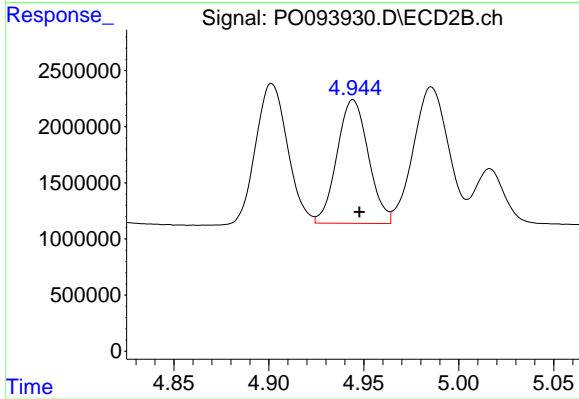
#5 AR-1016-3

R.T.: 4.902 min  
 Delta R.T.: -0.003 min  
 Response: 14301247  
 Conc: 504.57 ng/ml



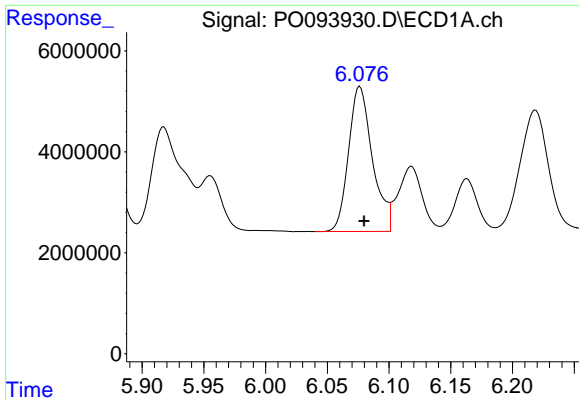
#6 AR-1016-4

R.T.: 5.779 min  
 Delta R.T.: -0.003 min  
 Response: 35052775  
 Conc: 476.72 ng/ml



#6 AR-1016-4

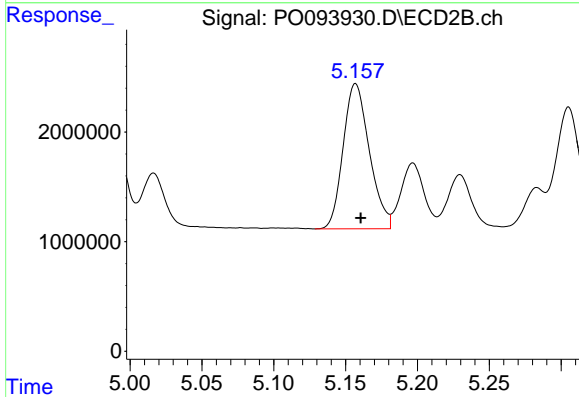
R.T.: 4.944 min  
 Delta R.T.: -0.003 min  
 Response: 12669795  
 Conc: 479.81 ng/ml



#7 AR-1016-5

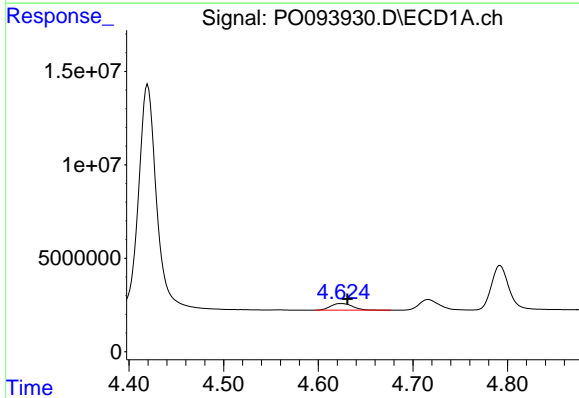
R.T.: 6.076 min  
 Delta R.T.: -0.003 min  
 Response: 38639625  
 Conc: 456.40 ng/ml

Instrument :  
 ECD\_O  
 ClientSampleId :



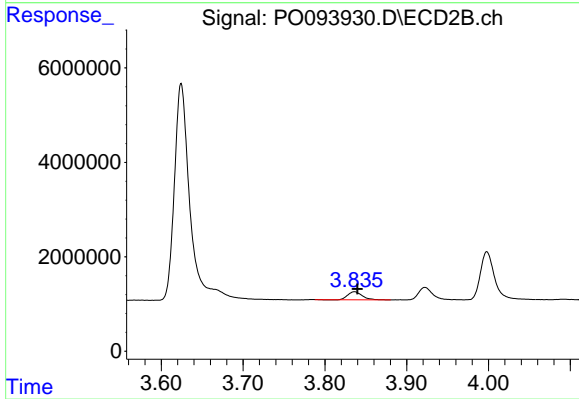
#7 AR-1016-5

R.T.: 5.157 min  
 Delta R.T.: -0.004 min  
 Response: 16851787  
 Conc: 515.01 ng/ml



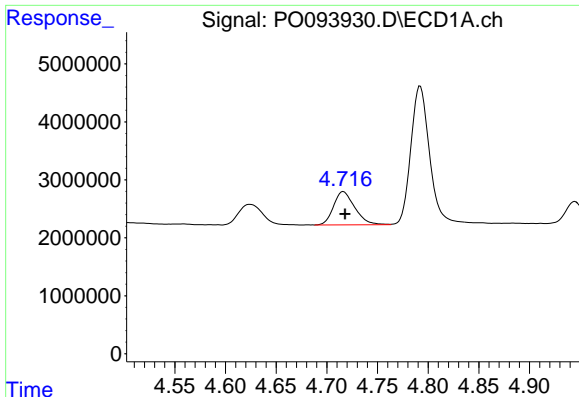
#8 AR-1221-1

R.T.: 4.624 min  
 Delta R.T.: -0.006 min  
 Response: 5774917  
 Conc: 125.22 ng/ml



#8 AR-1221-1

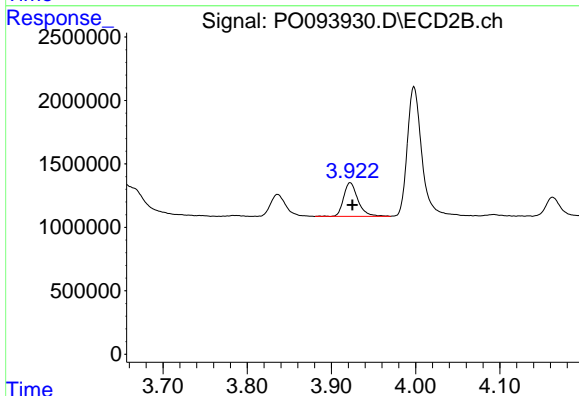
R.T.: 3.836 min  
 Delta R.T.: -0.004 min  
 Response: 2063942  
 Conc: 131.81 ng/ml



#9 AR-1221-2

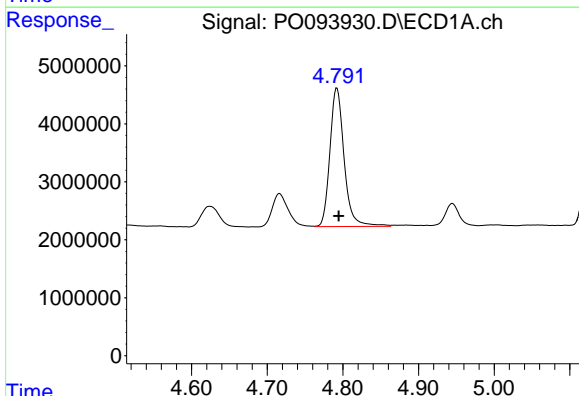
R.T.: 4.716 min  
 Delta R.T.: -0.002 min  
 Response: 8354509  
 Conc: 243.38 ng/ml

Instrument :  
 ECD\_O  
 ClientSampleId :



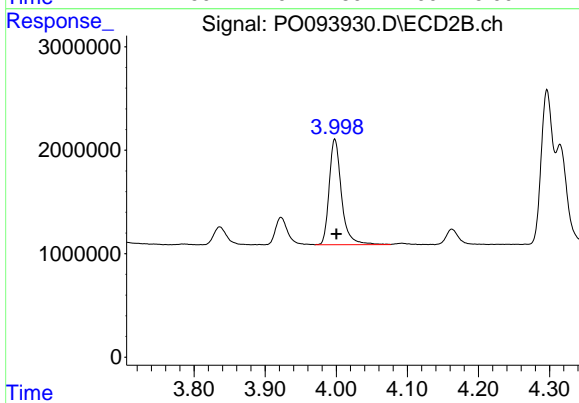
#9 AR-1221-2

R.T.: 3.922 min  
 Delta R.T.: -0.002 min  
 Response: 3136287  
 Conc: 265.73 ng/ml



#10 AR-1221-3

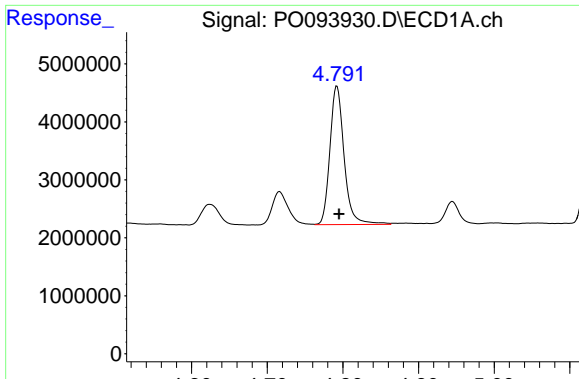
R.T.: 4.792 min  
 Delta R.T.: -0.002 min  
 Response: 31226964  
 Conc: 298.15 ng/ml



#10 AR-1221-3

R.T.: 3.998 min  
 Delta R.T.: -0.002 min  
 Response: 12288615  
 Conc: 333.59 ng/ml

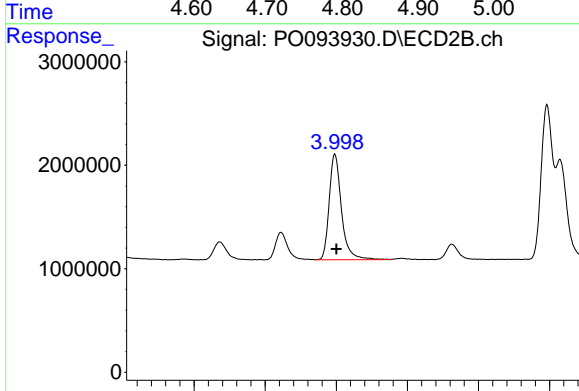




#11 AR-1232-1

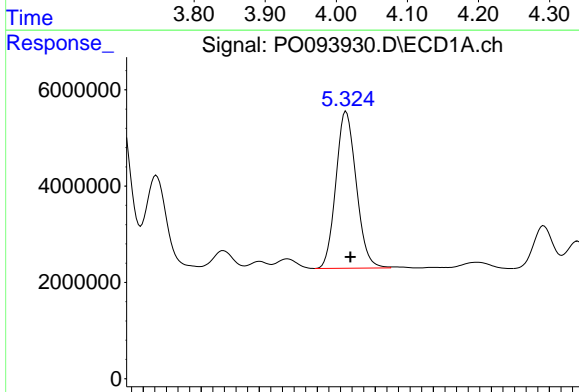
R.T.: 4.792 min  
Delta R.T.: -0.003 min  
Response: 31226964  
Conc: 357.79 ng/ml

Instrument :  
ECD\_O  
ClientSampleId :



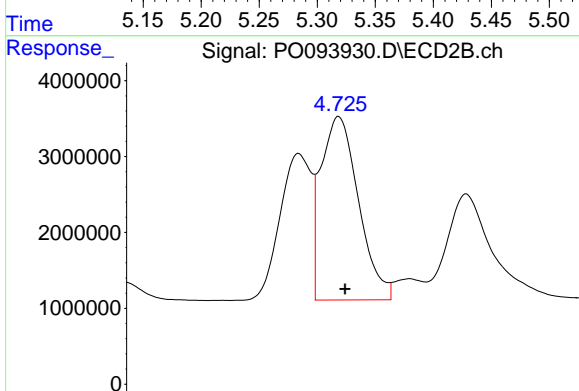
#11 AR-1232-1

R.T.: 3.998 min  
Delta R.T.: -0.002 min  
Response: 12288615  
Conc: 393.35 ng/ml



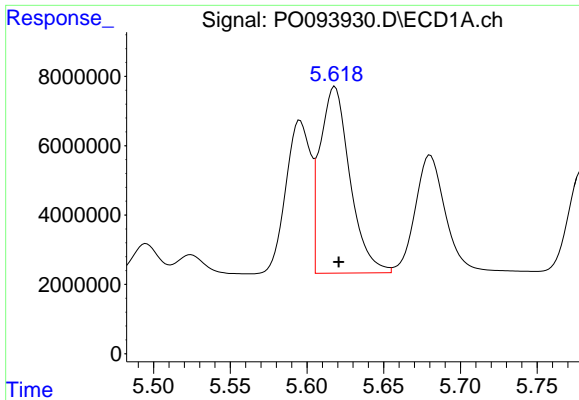
#12 AR-1232-2

R.T.: 5.325 min  
Delta R.T.: -0.004 min  
Response: 39745976  
Conc: 929.40 ng/ml



#12 AR-1232-2

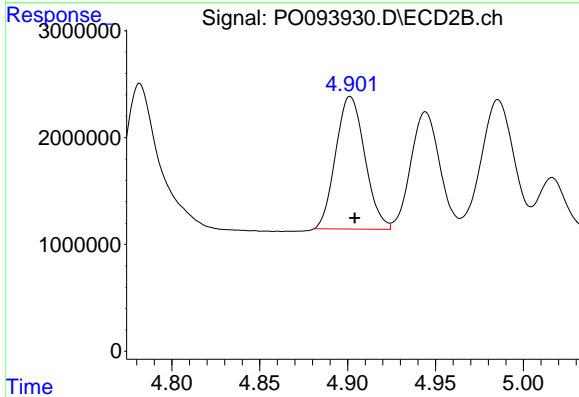
R.T.: 4.725 min  
Delta R.T.: -0.003 min  
Response: 28145500  
Conc: 1063.15 ng/ml



#13 AR-1232-3

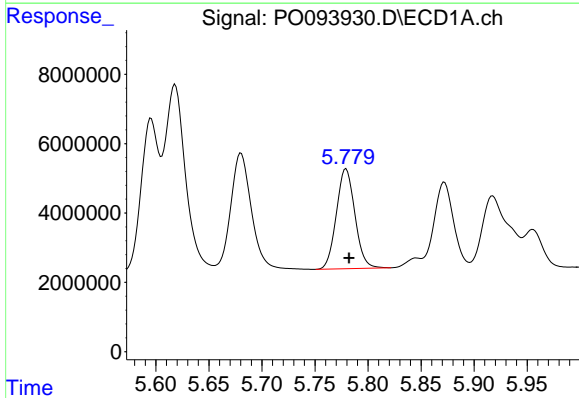
R.T.: 5.618 min  
 Delta R.T.: -0.002 min  
 Response: 72885407  
 Conc: 992.23 ng/ml

Instrument :  
 ECD\_O  
 ClientSampleId :



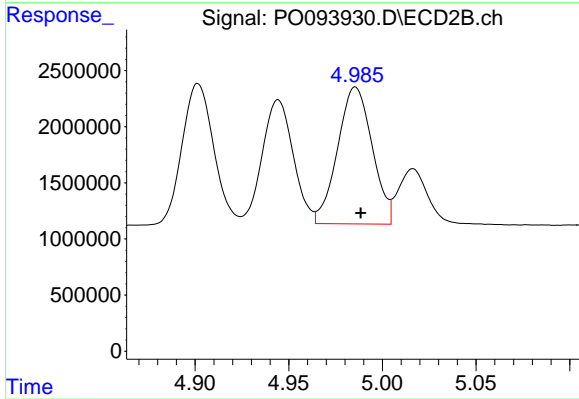
#13 AR-1232-3

R.T.: 4.902 min  
 Delta R.T.: -0.002 min  
 Response: 14301247  
 Conc: 1084.32 ng/ml



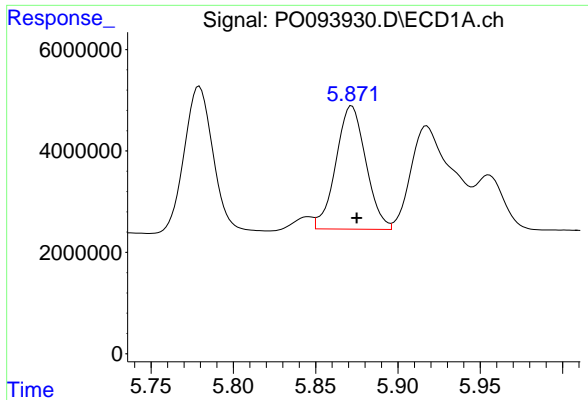
#14 AR-1232-4

R.T.: 5.779 min  
 Delta R.T.: -0.003 min  
 Response: 35052775  
 Conc: 1018.32 ng/ml



#14 AR-1232-4

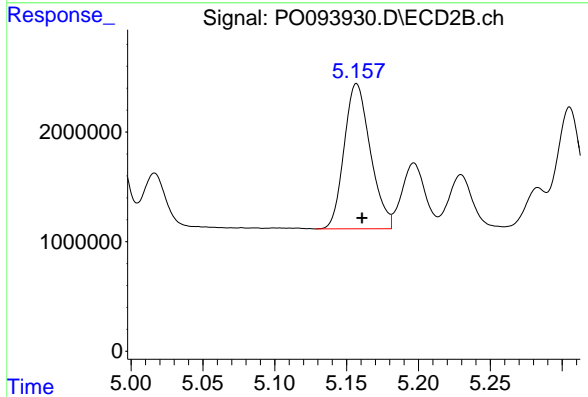
R.T.: 4.986 min  
 Delta R.T.: -0.003 min  
 Response: 15701871  
 Conc: 1104.91 ng/ml



#15 AR-1232-5

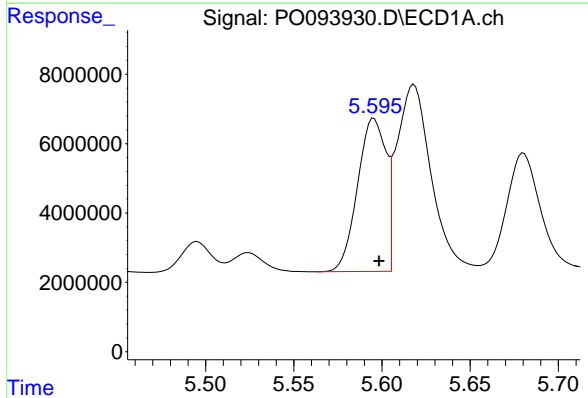
R.T.: 5.872 min  
 Delta R.T.: -0.003 min  
 Response: 30830233  
 Conc: 970.65 ng/ml

Instrument :  
 ECD\_O  
 ClientSampleId :



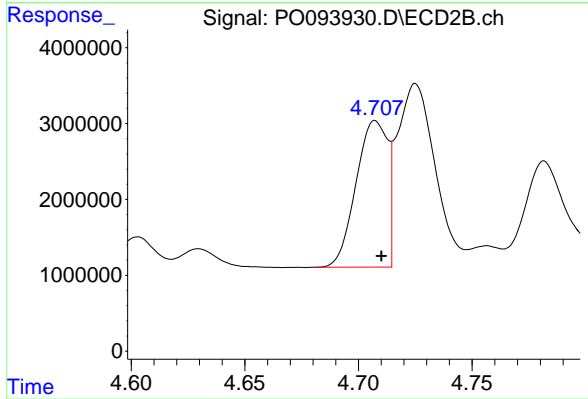
#15 AR-1232-5

R.T.: 5.157 min  
 Delta R.T.: -0.004 min  
 Response: 16851787  
 Conc: 1090.83 ng/ml



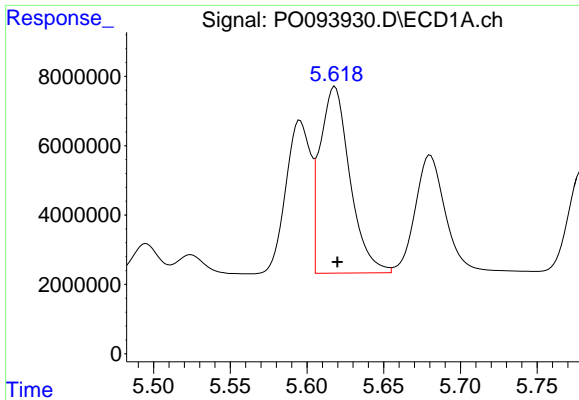
#16 AR-1242-1

R.T.: 5.595 min  
 Delta R.T.: -0.003 min  
 Response: 49528247  
 Conc: 567.44 ng/ml



#16 AR-1242-1

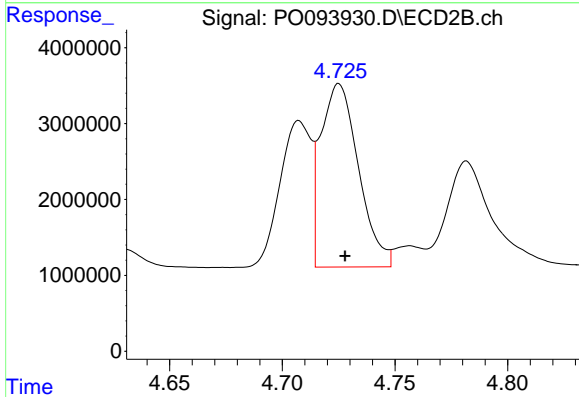
R.T.: 4.707 min  
 Delta R.T.: -0.003 min  
 Response: 18574070  
 Conc: 603.59 ng/ml



#17 AR-1242-2

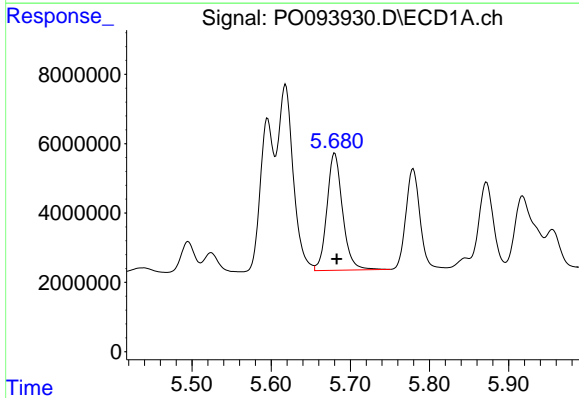
R.T.: 5.618 min  
 Delta R.T.: -0.002 min  
 Response: 72885407  
 Conc: 548.15 ng/ml

Instrument :  
 ECD\_O  
 ClientSampleId :



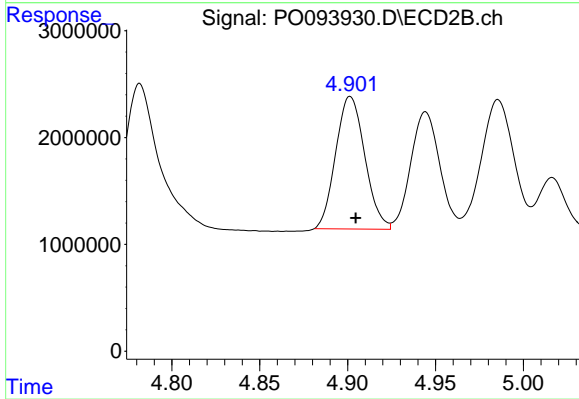
#17 AR-1242-2

R.T.: 4.725 min  
 Delta R.T.: -0.003 min  
 Response: 28145500  
 Conc: 611.94 ng/ml



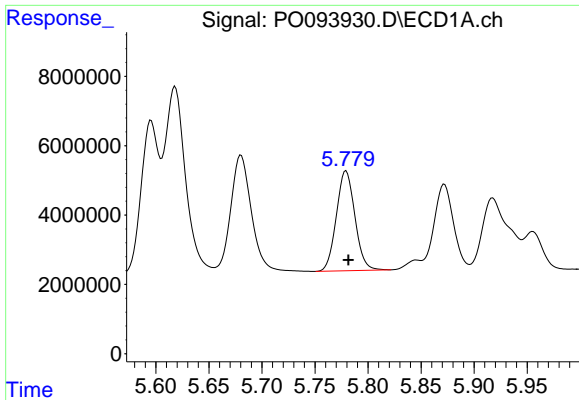
#18 AR-1242-3

R.T.: 5.680 min  
 Delta R.T.: -0.003 min  
 Response: 46357259  
 Conc: 546.10 ng/ml



#18 AR-1242-3

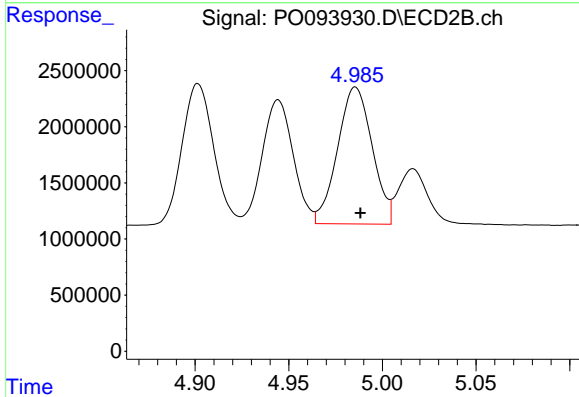
R.T.: 4.902 min  
 Delta R.T.: -0.003 min  
 Response: 14301247  
 Conc: 590.13 ng/ml



#19 AR-1242-4

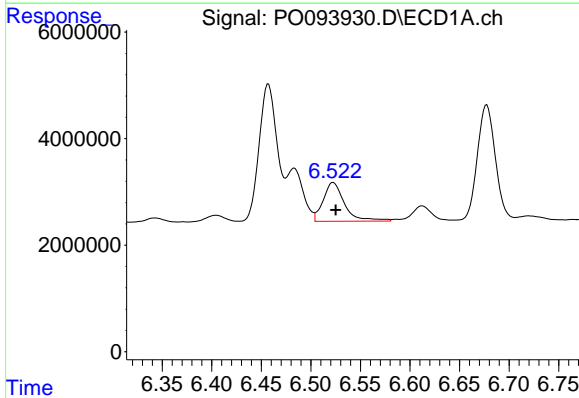
R.T.: 5.779 min  
 Delta R.T.: -0.002 min  
 Response: 35052775  
 Conc: 561.01 ng/ml

Instrument :  
 ECD\_O  
 ClientSampleId :



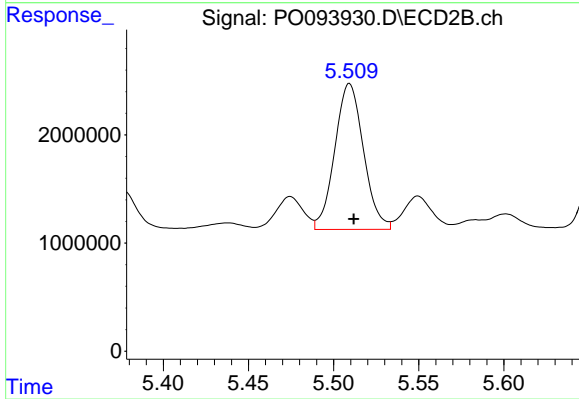
#19 AR-1242-4

R.T.: 4.986 min  
 Delta R.T.: -0.003 min  
 Response: 15701871  
 Conc: 559.31 ng/ml



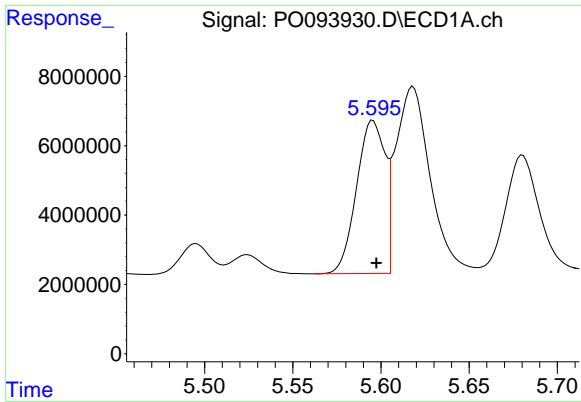
#20 AR-1242-5

R.T.: 6.523 min  
 Delta R.T.: -0.002 min  
 Response: 10919452  
 Conc: 162.18 ng/ml



#20 AR-1242-5

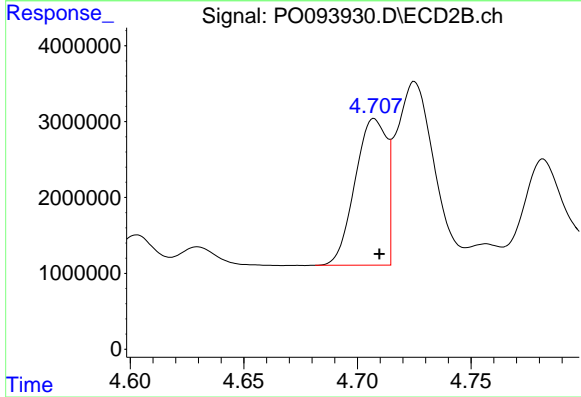
R.T.: 5.509 min  
 Delta R.T.: -0.002 min  
 Response: 15848638  
 Conc: 555.88 ng/ml



#21 AR-1248-1

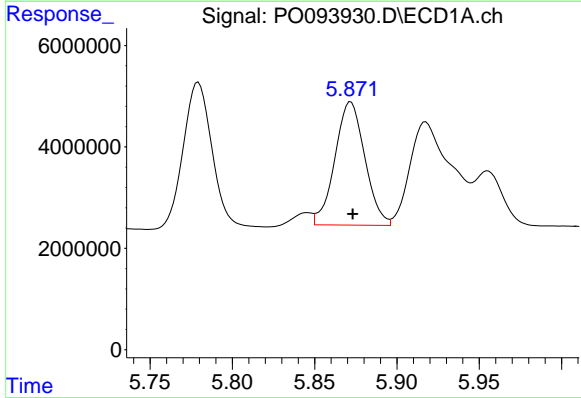
R.T.: 5.595 min  
 Delta R.T.: -0.002 min  
 Response: 49528247  
 Conc: 736.13 ng/ml

Instrument :  
 ECD\_O  
 ClientSampleId :



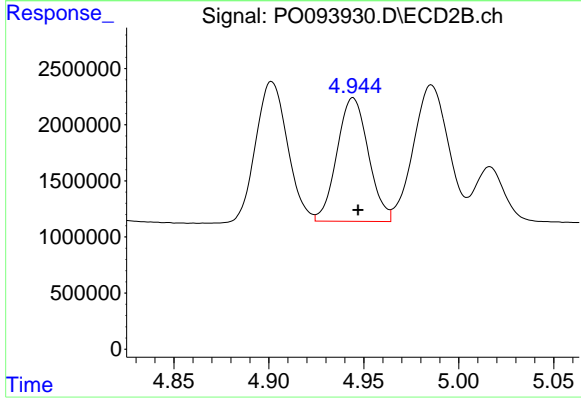
#21 AR-1248-1

R.T.: 4.707 min  
 Delta R.T.: -0.002 min  
 Response: 18574070  
 Conc: 778.74 ng/ml



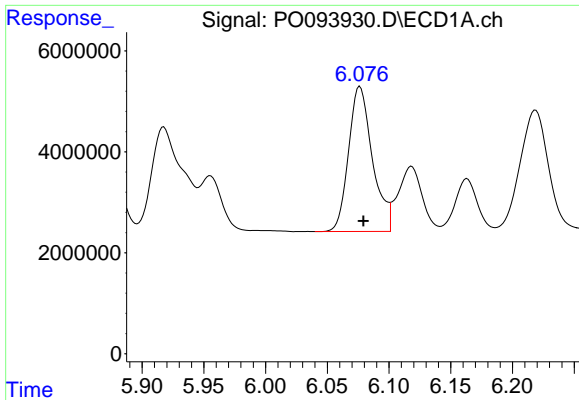
#22 AR-1248-2

R.T.: 5.872 min  
 Delta R.T.: -0.001 min  
 Response: 30830233  
 Conc: 281.85 ng/ml



#22 AR-1248-2

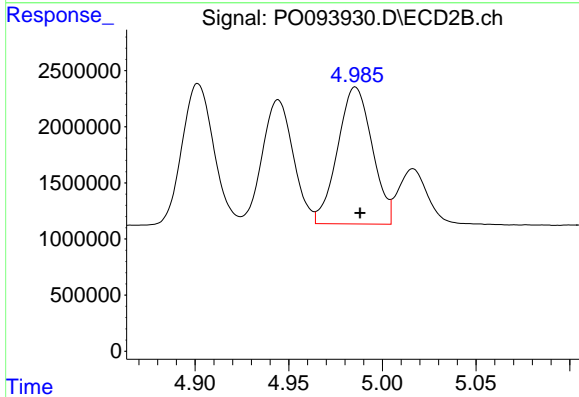
R.T.: 4.944 min  
 Delta R.T.: -0.003 min  
 Response: 12669795  
 Conc: 318.07 ng/ml



#23 AR-1248-3

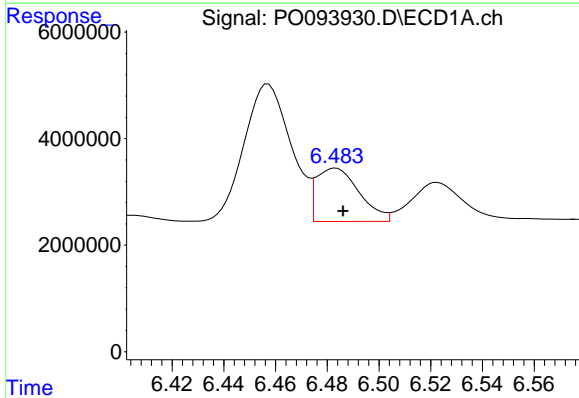
R.T.: 6.076 min  
 Delta R.T.: -0.003 min  
 Response: 38639625  
 Conc: 320.08 ng/ml

Instrument :  
 ECD\_O  
 ClientSampleId :



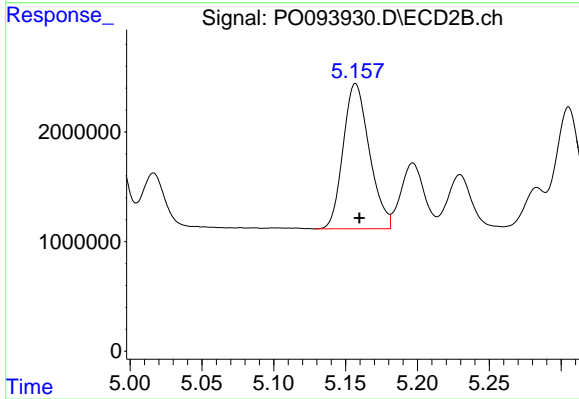
#23 AR-1248-3

R.T.: 4.986 min  
 Delta R.T.: -0.003 min  
 Response: 15701871  
 Conc: 376.19 ng/ml



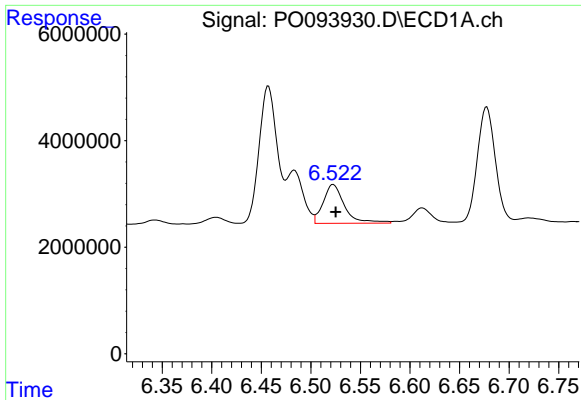
#24 AR-1248-4

R.T.: 6.483 min  
 Delta R.T.: -0.003 min  
 Response: 11519789  
 Conc: 107.26 ng/ml



#24 AR-1248-4

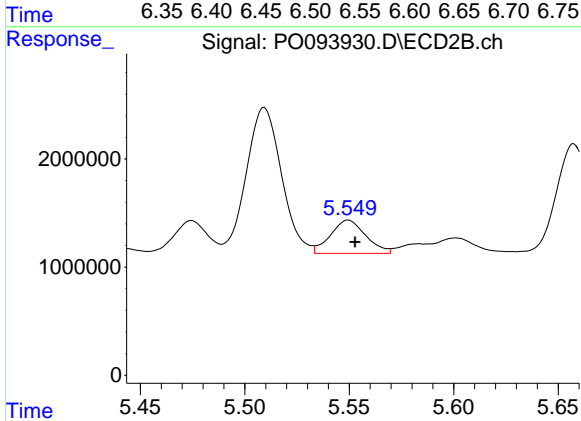
R.T.: 5.157 min  
 Delta R.T.: -0.003 min  
 Response: 16851787  
 Conc: 358.37 ng/ml



#25 AR-1248-5

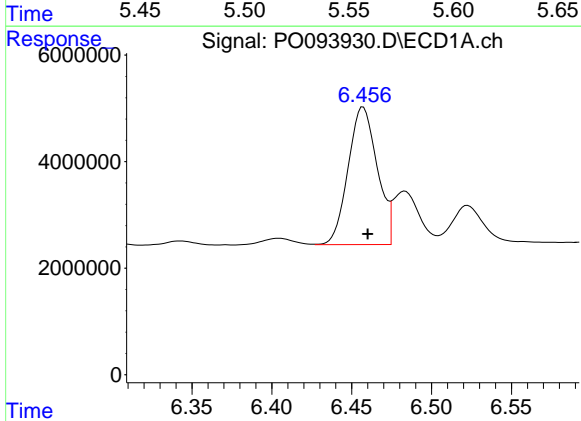
R.T.: 6.523 min  
 Delta R.T.: -0.003 min  
 Response: 10919452  
 Conc: 94.11 ng/ml

Instrument :  
 ECD\_O  
 ClientSampleId :



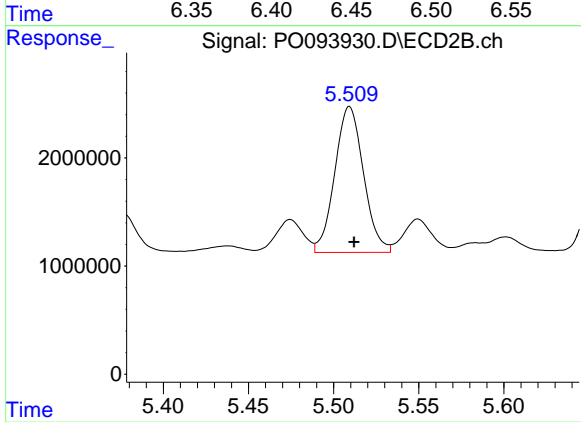
#25 AR-1248-5

R.T.: 5.550 min  
 Delta R.T.: -0.003 min  
 Response: 3608384  
 Conc: 96.65 ng/ml



#26 AR-1254-1

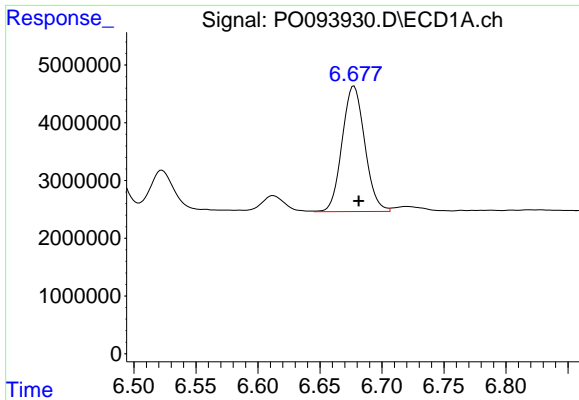
R.T.: 6.457 min  
 Delta R.T.: -0.003 min  
 Response: 32760283  
 Conc: 241.55 ng/ml



#26 AR-1254-1

R.T.: 5.509 min  
 Delta R.T.: -0.003 min  
 Response: 15848638  
 Conc: 231.86 ng/ml

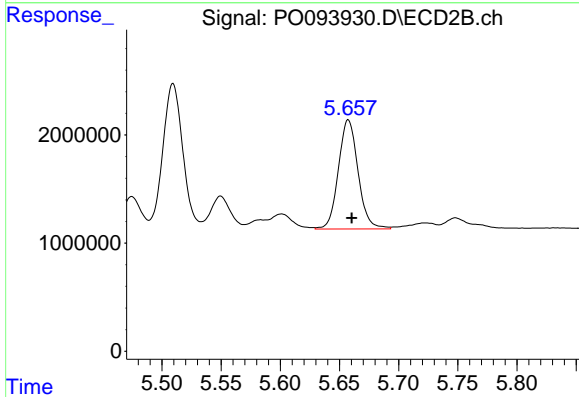




#27 AR-1254-2

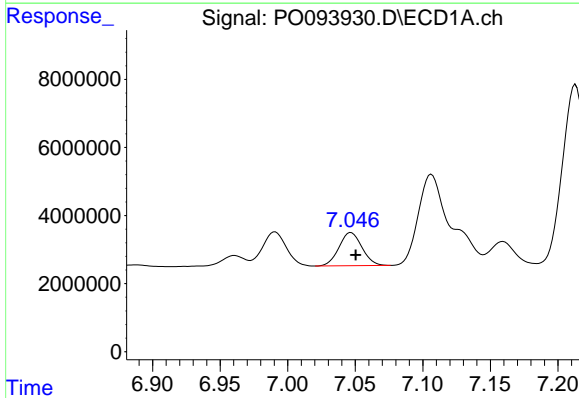
R.T.: 6.677 min  
 Delta R.T.: -0.004 min  
 Response: 27569179  
 Conc: 141.04 ng/ml

Instrument :  
 ECD\_O  
 ClientSampleId :



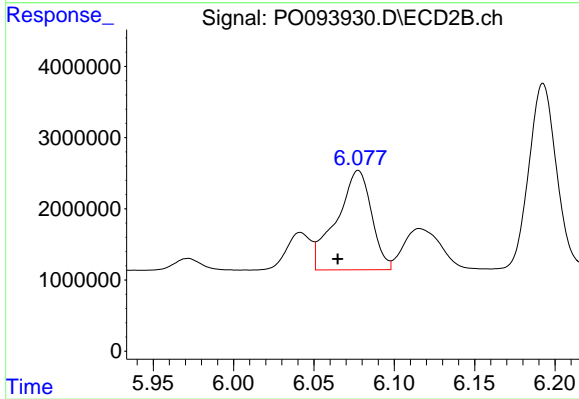
#27 AR-1254-2

R.T.: 5.657 min  
 Delta R.T.: -0.003 min  
 Response: 11717259  
 Conc: 192.38 ng/ml



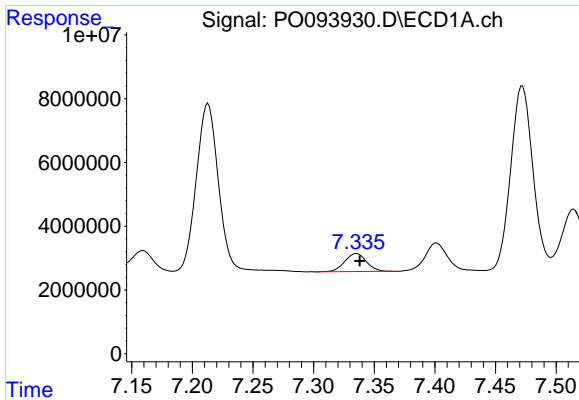
#28 AR-1254-3

R.T.: 7.047 min  
 Delta R.T.: -0.004 min  
 Response: 11516569  
 Conc: 62.34 ng/ml



#28 AR-1254-3

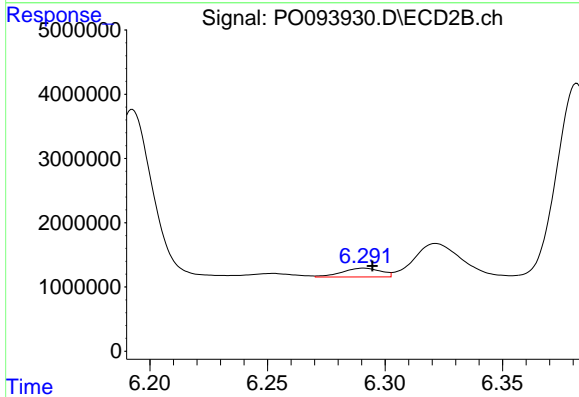
R.T.: 6.078 min  
 Delta R.T.: 0.013 min  
 Response: 21136011  
 Conc: 232.04 ng/ml



#29 AR-1254-4

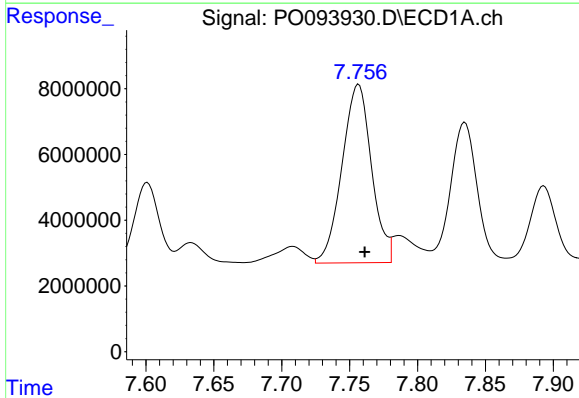
R.T.: 7.335 min  
 Delta R.T.: -0.003 min  
 Response: 7028042  
 Conc: 69.30 ng/ml

Instrument :  
 ECD\_O  
 ClientSampleId :



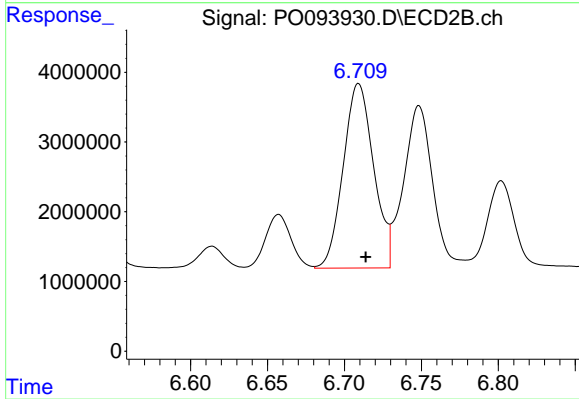
#29 AR-1254-4

R.T.: 6.291 min  
 Delta R.T.: -0.004 min  
 Response: 1559471  
 Conc: 36.61 ng/ml



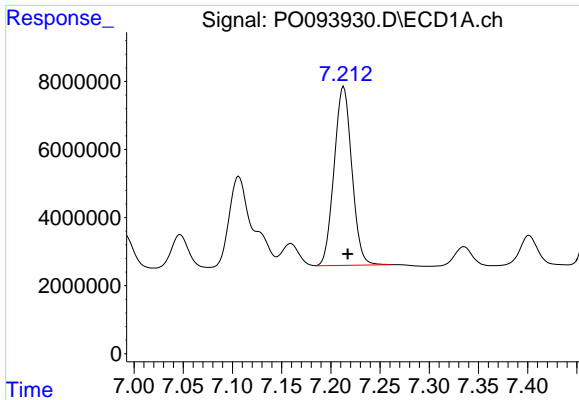
#30 AR-1254-5

R.T.: 7.757 min  
 Delta R.T.: -0.005 min  
 Response: 82260649  
 Conc: 606.62 ng/ml



#30 AR-1254-5

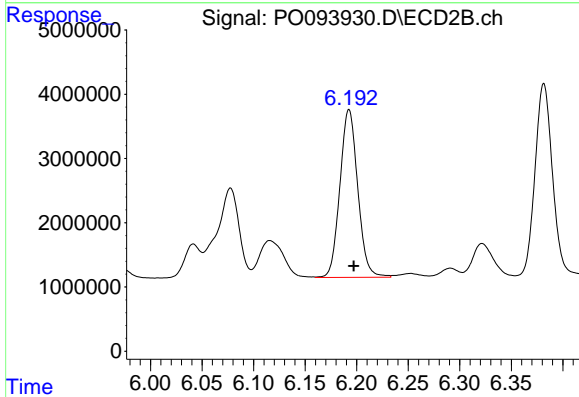
R.T.: 6.709 min  
 Delta R.T.: -0.005 min  
 Response: 36367471  
 Conc: 504.03 ng/ml



#31 AR-1260-1

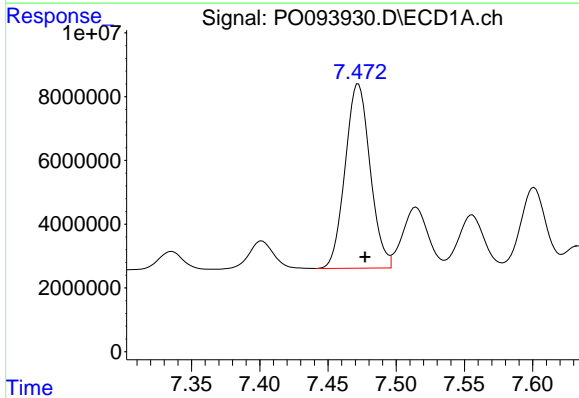
R.T.: 7.213 min  
 Delta R.T.: -0.004 min  
 Response: 65878654  
 Conc: 451.33 ng/ml

Instrument :  
 ECD\_O  
 ClientSampleId :



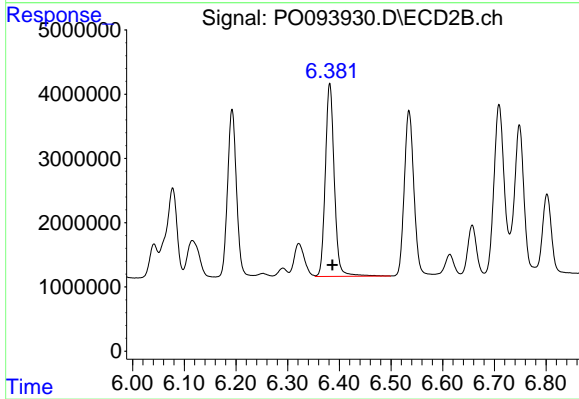
#31 AR-1260-1

R.T.: 6.193 min  
 Delta R.T.: -0.005 min  
 Response: 31443601  
 Conc: 482.18 ng/ml



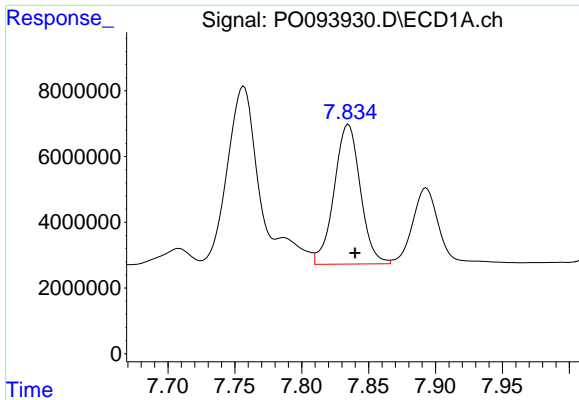
#32 AR-1260-2

R.T.: 7.472 min  
 Delta R.T.: -0.005 min  
 Response: 73740763  
 Conc: 460.72 ng/ml



#32 AR-1260-2

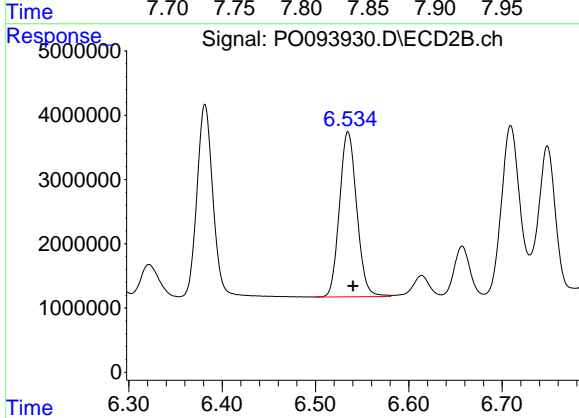
R.T.: 6.382 min  
 Delta R.T.: -0.005 min  
 Response: 36251269  
 Conc: 499.16 ng/ml



#33 AR-1260-3

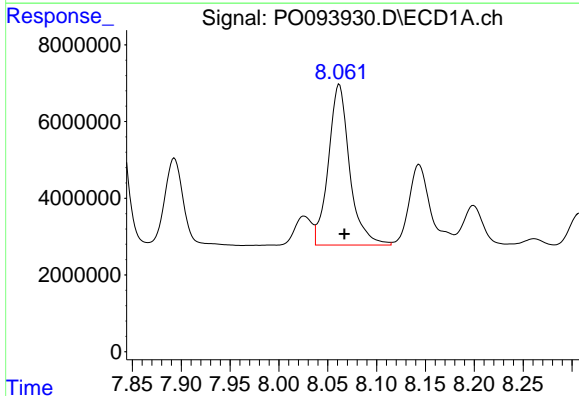
R.T.: 7.835 min  
 Delta R.T.: -0.005 min  
 Response: 57880706  
 Conc: 435.92 ng/ml

Instrument :  
 ECD\_O  
 ClientSampleId :



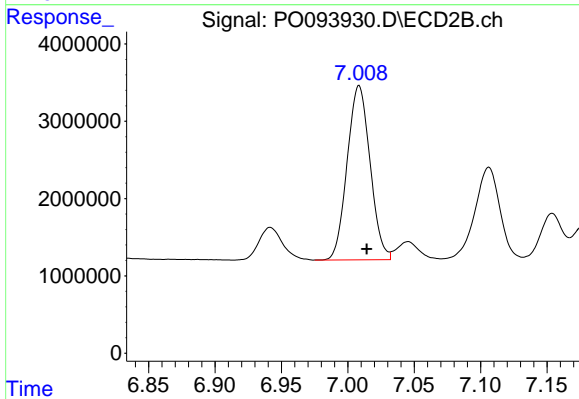
#33 AR-1260-3

R.T.: 6.535 min  
 Delta R.T.: -0.005 min  
 Response: 33005704  
 Conc: 454.79 ng/ml



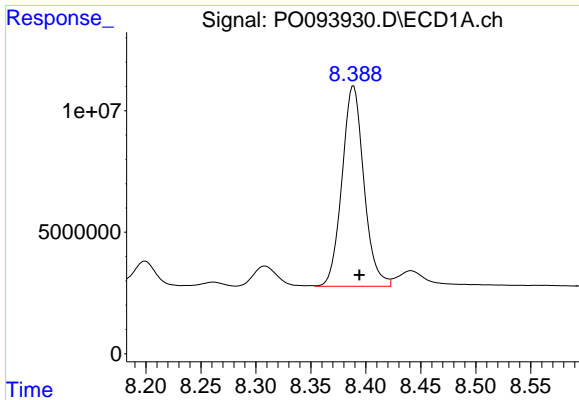
#34 AR-1260-4

R.T.: 8.062 min  
 Delta R.T.: -0.005 min  
 Response: 63530717  
 Conc: 461.23 ng/ml



#34 AR-1260-4

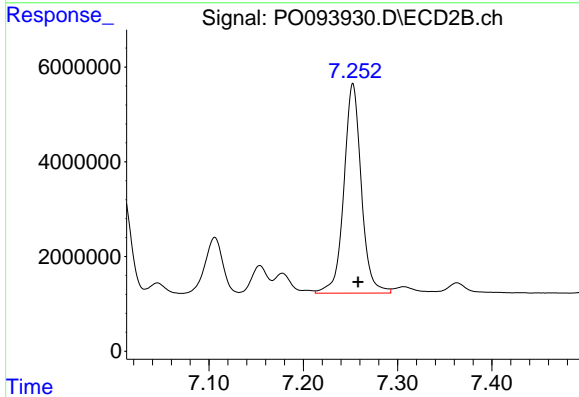
R.T.: 7.008 min  
 Delta R.T.: -0.006 min  
 Response: 27076961  
 Conc: 487.59 ng/ml



#35 AR-1260-5

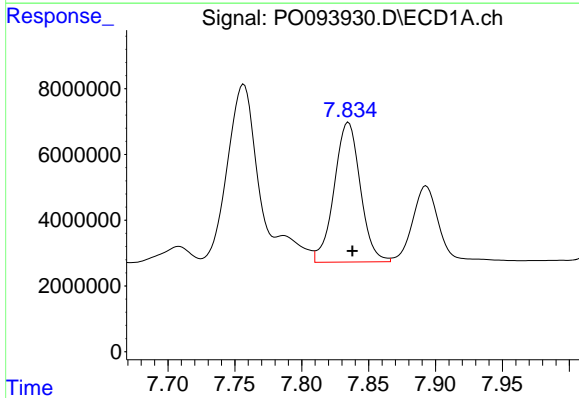
R.T.: 8.389 min  
 Delta R.T.: -0.005 min  
 Response: 114317572  
 Conc: 524.90 ng/ml

Instrument :  
 ECD\_O  
 ClientSampleId :



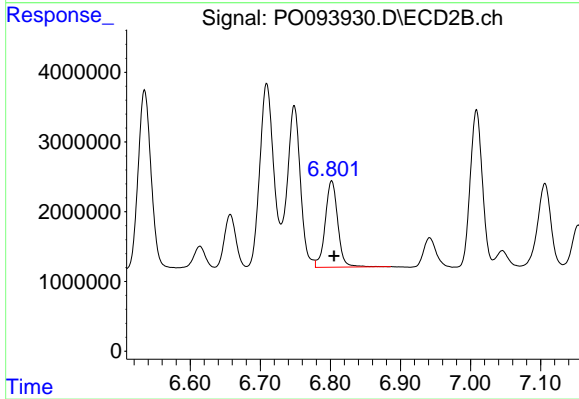
#35 AR-1260-5

R.T.: 7.253 min  
 Delta R.T.: -0.006 min  
 Response: 56789102  
 Conc: 547.24 ng/ml



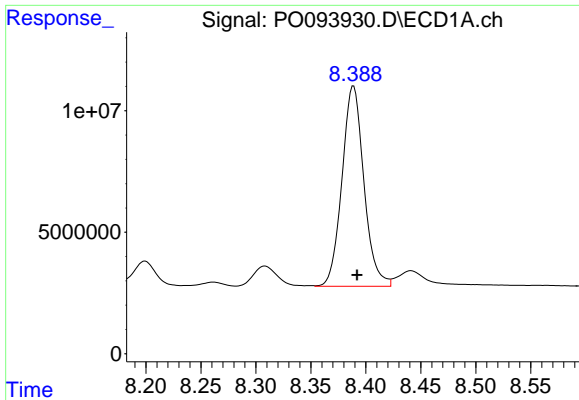
#36 AR-1262-1

R.T.: 7.835 min  
 Delta R.T.: -0.003 min  
 Response: 57880706  
 Conc: 338.84 ng/ml



#36 AR-1262-1

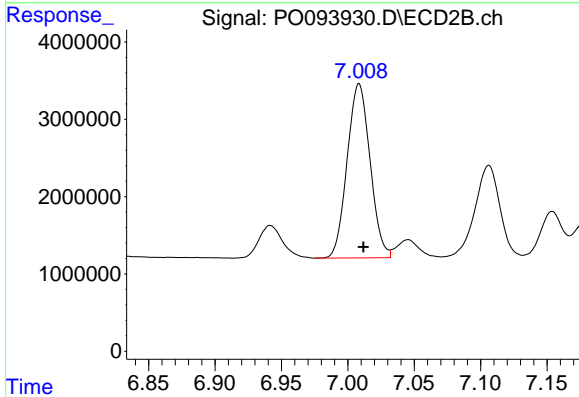
R.T.: 6.802 min  
 Delta R.T.: -0.003 min  
 Response: 15484053  
 Conc: 442.55 ng/ml



#37 AR-1262-2

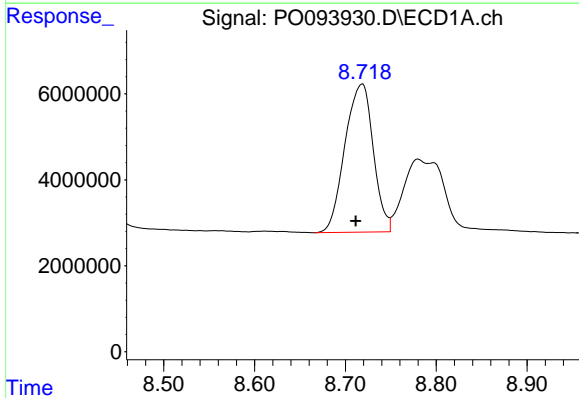
R.T.: 8.389 min  
 Delta R.T.: -0.003 min  
 Response: 114317572  
 Conc: 491.79 ng/ml

Instrument :  
 ECD\_O  
 ClientSampleId :



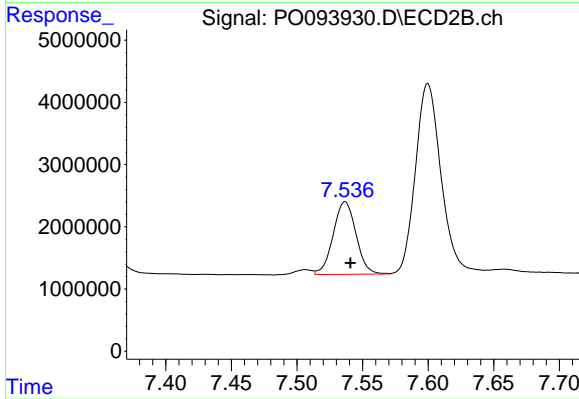
#37 AR-1262-2

R.T.: 7.008 min  
 Delta R.T.: -0.003 min  
 Response: 27076961  
 Conc: 383.24 ng/ml



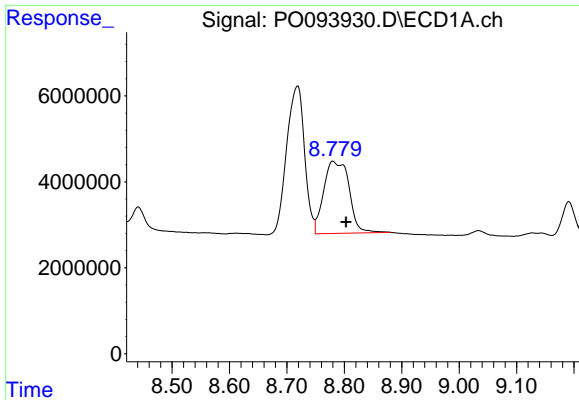
#38 AR-1262-3

R.T.: 8.719 min  
 Delta R.T.: 0.007 min  
 Response: 74697776  
 Conc: 456.01 ng/ml



#38 AR-1262-3

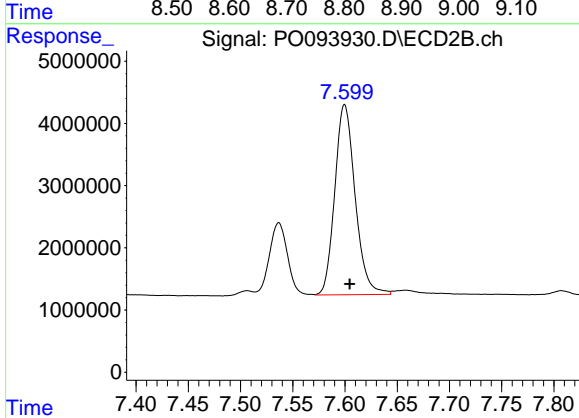
R.T.: 7.537 min  
 Delta R.T.: -0.004 min  
 Response: 14155888  
 Conc: 282.93 ng/ml



#39 AR-1262-4

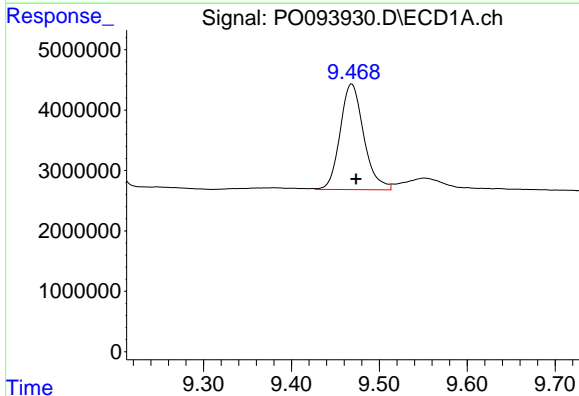
R.T.: 8.780 min  
 Delta R.T.: -0.023 min  
 Response: 51516451  
 Conc: 514.17 ng/ml

Instrument :  
 ECD\_O  
 ClientSampleId :



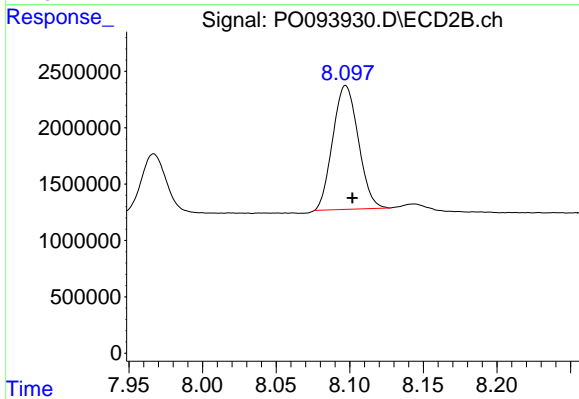
#39 AR-1262-4

R.T.: 7.600 min  
 Delta R.T.: -0.005 min  
 Response: 41470294  
 Conc: 500.06 ng/ml



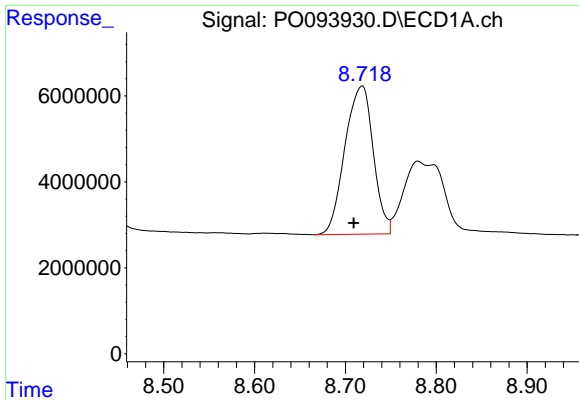
#40 AR-1262-5

R.T.: 9.469 min  
 Delta R.T.: -0.005 min  
 Response: 32661408  
 Conc: 405.80 ng/ml



#40 AR-1262-5

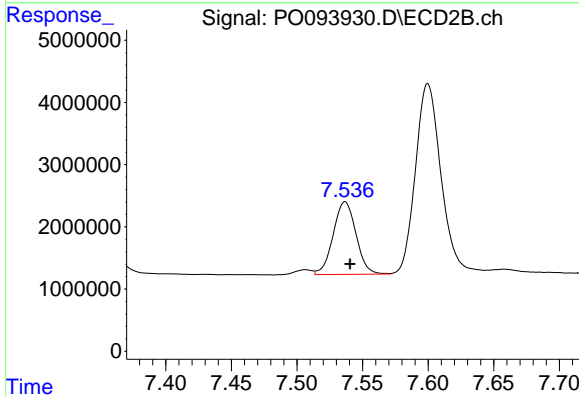
R.T.: 8.097 min  
 Delta R.T.: -0.005 min  
 Response: 13287391  
 Conc: 408.46 ng/ml



#41 AR-1268-1

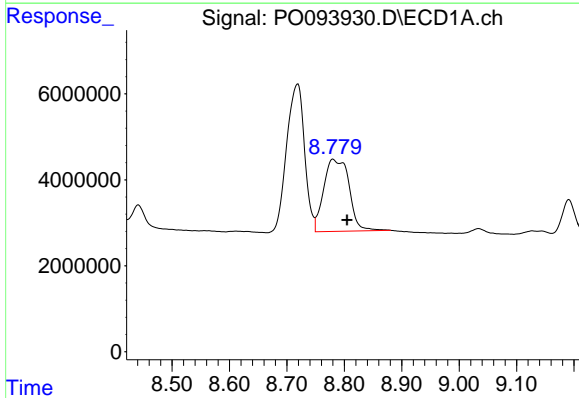
R.T.: 8.719 min  
 Delta R.T.: 0.009 min  
 Response: 74697776  
 Conc: 221.95 ng/ml

Instrument :  
 ECD\_O  
 ClientSampleId :



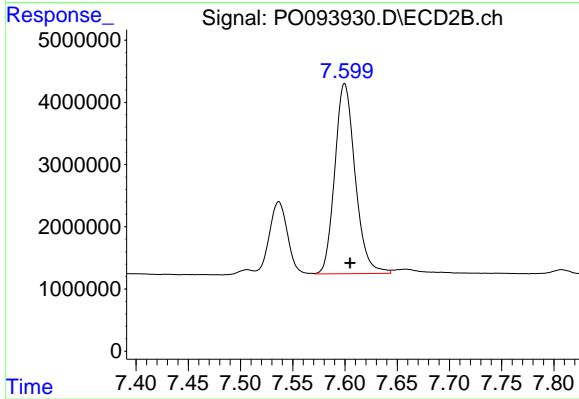
#41 AR-1268-1

R.T.: 7.537 min  
 Delta R.T.: -0.004 min  
 Response: 14155888  
 Conc: 92.67 ng/ml



#42 AR-1268-2

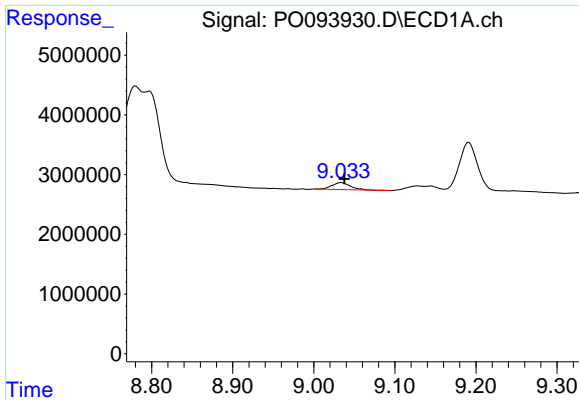
R.T.: 8.780 min  
 Delta R.T.: -0.025 min  
 Response: 51516451  
 Conc: 160.07 ng/ml



#42 AR-1268-2

R.T.: 7.600 min  
 Delta R.T.: -0.005 min  
 Response: 41470294  
 Conc: 305.24 ng/ml

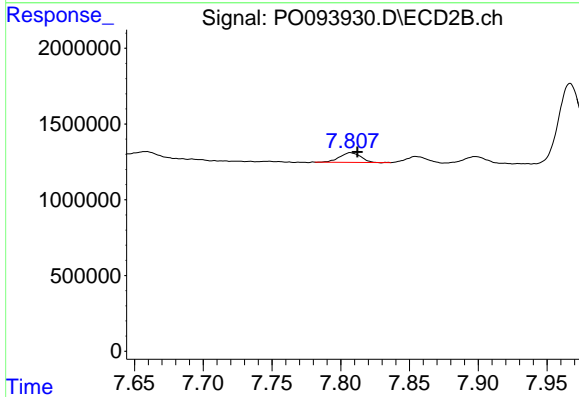




#43 AR-1268-3

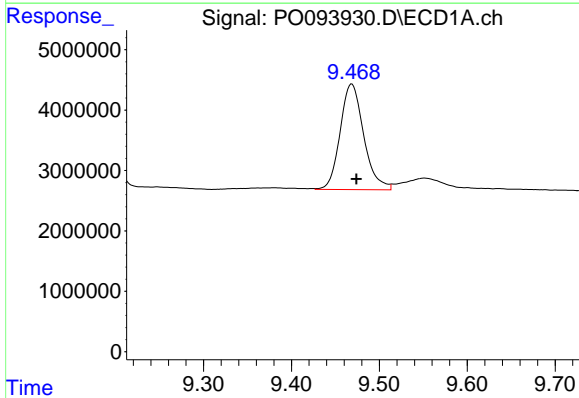
R.T.: 9.034 min  
 Delta R.T.: -0.004 min  
 Response: 1883261  
 Conc: 6.64 ng/ml

Instrument :  
 ECD\_O  
 ClientSampleId :



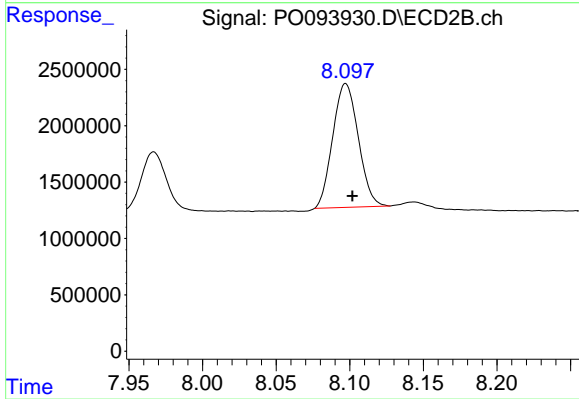
#43 AR-1268-3

R.T.: 7.807 min  
 Delta R.T.: -0.005 min  
 Response: 692061  
 Conc: 5.29 ng/ml



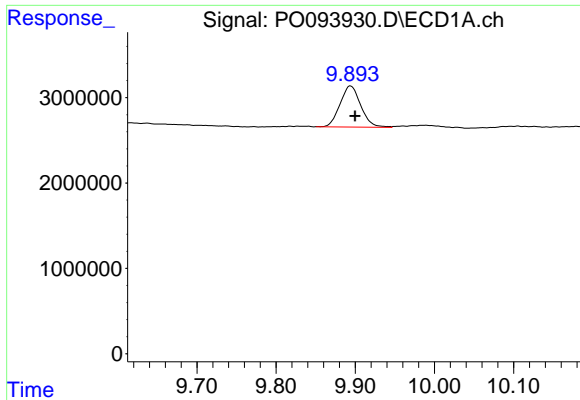
#44 AR-1268-4

R.T.: 9.469 min  
 Delta R.T.: -0.005 min  
 Response: 32661408  
 Conc: 337.80 ng/ml



#44 AR-1268-4

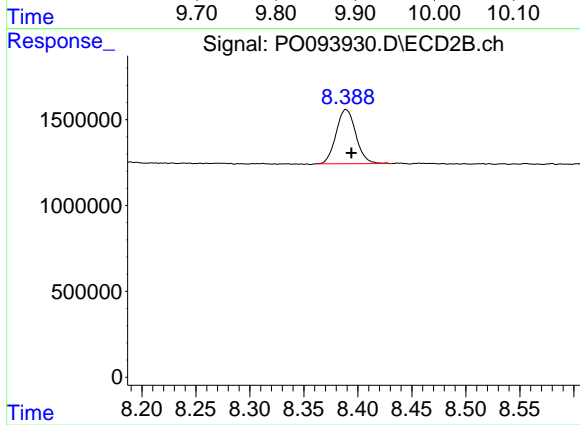
R.T.: 8.097 min  
 Delta R.T.: -0.005 min  
 Response: 13287391  
 Conc: 335.67 ng/ml



#45 AR-1268-5

R.T.: 9.894 min  
Delta R.T.: -0.006 min  
Response: 8755145  
Conc: 10.42 ng/ml

Instrument :  
ECD\_O  
ClientSampleId :



#45 AR-1268-5

R.T.: 8.389 min  
Delta R.T.: -0.005 min  
Response: 4022820  
Conc: 11.48 ng/ml