

Data Path : Z:\pestpcbsrv\HPCHEM1\ECD_0\Data\P0040723\
 Data File : P0093933.D
 Signal(s) : Signal #1: ECD1A.ch Signal #2: ECD2B.ch
 Acq On : 07 Apr 2023 16:52
 Operator : YP/AJ
 Sample : 02213-01
 Misc : AR1660 LOD 25 PPB
 ALS Vial : 8 Sample Multiplier: 1

Instrument :
 ECD_0
 ClientSampleId :

Integration File signal 1: autoint1.e
 Integration File signal 2: autoint2.e
 Quant Time: Apr 07 22:43:11 2023
 Quant Method : Z:\pestpcbsrv\HPCHEM1\ECD_0\methods\P0040323.M
 Quant Title : GC EXTRACTABLES
 QLast Update : Tue Apr 04 06:20:55 2023
 Response via : Initial Calibration
 Integrator: ChemStation

Volume Inj. : 2 µl
 Signal #1 Phase : ZB-MR1 Signal #2 Phase: ZB-MR2
 Signal #1 Info : 30Mx0.32mmx 0.50µ Signal #2 Info : 30M x 0.32mm x 0.25µm

Compound	RT#1	RT#2	Resp#1	Resp#2	ng/ml	ng/ml
System Monitoring Compounds						
1) SA Tetrachlo...	4.419	3.624	54987804	20595076	14.710	16.173
2) SA Decachlor...	10.242	8.643	41813316	18943275	18.692	18.947
Target Compounds						
3) L1 AR-1016-1	5.595	4.707	2788851	903196	27.271	25.455
4) L1 AR-1016-2	5.617	4.725	4005320	1329027	25.698	24.607
5) L1 AR-1016-3	5.680	4.901	2621411	641327	26.578	22.627
6) L1 AR-1016-4	5.779	4.944	1571320	519953	21.370	19.691
7) L1 AR-1016-5	6.077	5.157	2341663	949508	27.659	29.018
8) L2 AR-1221-1	4.628	0.000	204035	0	4.424	N.D. #
9) L2 AR-1221-2	4.725	3.922	1196036	375170	34.843	31.788
10) L2 AR-1221-3	4.792	3.998	1717183	524120	16.395	14.228
11) L3 AR-1232-1	4.792	3.998	1717183	524120	19.675	16.777
12) L3 AR-1232-2	5.325	4.725	1878746	1329027	43.932	50.202
13) L3 AR-1232-3	5.617	4.901	4005320	641327	54.527	48.625
14) L3 AR-1232-4	5.779	4.985	1571320	583783	45.648	41.080
15) L3 AR-1232-5	5.872	5.157	1787415	949508	56.275	61.463
16) L4 AR-1242-1	5.595	4.707	2788851	903196	31.951	29.351
17) L4 AR-1242-2	5.617	4.725	4005320	1329027	30.123	28.896
18) L4 AR-1242-3	5.680	4.901	2621411	641327	30.881	26.464
19) L4 AR-1242-4	5.779	4.985	1571320	583783	25.149	20.795
20) L4 AR-1242-5	6.523	5.509	1051231	776331	15.613	27.229 #
21) L5 AR-1248-1	5.595	4.707	2788851	903196	41.450	37.867
22) L5 AR-1248-2	5.872	4.944	1787415	519953	16.340	13.053
23) L5 AR-1248-3	6.077	4.985	2341663	583783	19.397	13.986 #
24) L5 AR-1248-4	6.483	5.157	1092765	949508	10.175	20.192 #
25) L5 AR-1248-5	6.523	5.509f	1051231	776331	9.060	20.794 #
26) L6 AR-1254-1	6.457	5.509	1876036	776331	13.832	11.358
27) L6 AR-1254-2	6.678	5.658	1337608	830837	6.843	13.641 #
28) L6 AR-1254-3	7.047	6.076	1259645	965713	6.818	10.602 #
29) L6 AR-1254-4	7.335	6.321	423535	572844	4.176	13.449 #
30) L6 AR-1254-5	7.757	6.709	5446573	1810782	40.165	25.096 #
31) L7 AR-1260-1	7.213	6.192	2885546	1801876	19.768	27.631 #
32) L7 AR-1260-2	7.473	6.381	3866799	2150059	24.159	29.605
33) L7 AR-1260-3	7.836	6.535	2894665	1771042	21.801	24.404
34) L7 AR-1260-4	8.063	7.008	3007866	1353793	21.837	24.378
35) L7 AR-1260-5	8.388	7.251	5692712	2915117	26.139	28.091
36) L8 AR-1262-1	7.836	6.801	2894665	744672	16.945	21.284 #
37) L8 AR-1262-2	8.388	7.008	5692712	1353793	24.490	19.161
38) L8 AR-1262-3	8.719	7.536	3505875	749705	21.403	14.984 #
39) L8 AR-1262-4	8.770	7.599	4312657	2003346	43.043	24.157 #
40) L8 AR-1262-5	9.470	8.097	2456670	588412	30.523	18.088 #
41) L9 AR-1268-1	8.719	7.536	3505875	749705	10.417	4.908 #

Data Path : Z:\pestpcbsrv\HPCHEM1\ECD_0\Data\P0040723\
 Data File : P0093933.D
 Signal(s) : Signal #1: ECD1A.ch Signal #2: ECD2B.ch
 Acq On : 07 Apr 2023 16:52
 Operator : YP/AJ
 Sample : 02213-01
 Misc : AR1660 LOD 25 PPB
 ALS Vial : 8 Sample Multiplier: 1

Instrument :
 ECD_0
 ClientSampleId :

Integration File signal 1: autoint1.e
 Integration File signal 2: autoint2.e
 Quant Time: Apr 07 22:43:11 2023
 Quant Method : Z:\pestpcbsrv\HPCHEM1\ECD_0\methods\P0040323.M
 Quant Title : GC EXTRACTABLES
 QLast Update : Tue Apr 04 06:20:55 2023
 Response via : Initial Calibration
 Integrator: ChemStation

Volume Inj. : 2 µl
 Signal #1 Phase : ZB-MR1 Signal #2 Phase: ZB-MR2
 Signal #1 Info : 30Mx0.32mmx 0.50µ Signal #2 Info : 30M x 0.32mm x 0.25µm

	Compound	RT#1	RT#2	Resp#1	Resp#2	ng/ml	ng/ml
42)	L9 AR-1268-2	8.770f	7.599	4312657	2003346	13.400	14.745
43)	L9 AR-1268-3	9.036	0.000	435932	0	1.537	N.D. #
44)	L9 AR-1268-4	9.470	8.097	2456670	588412	25.408	14.865 #
45)	L9 AR-1268-5	9.890	0.000	289327	0	0.344	N.D. #

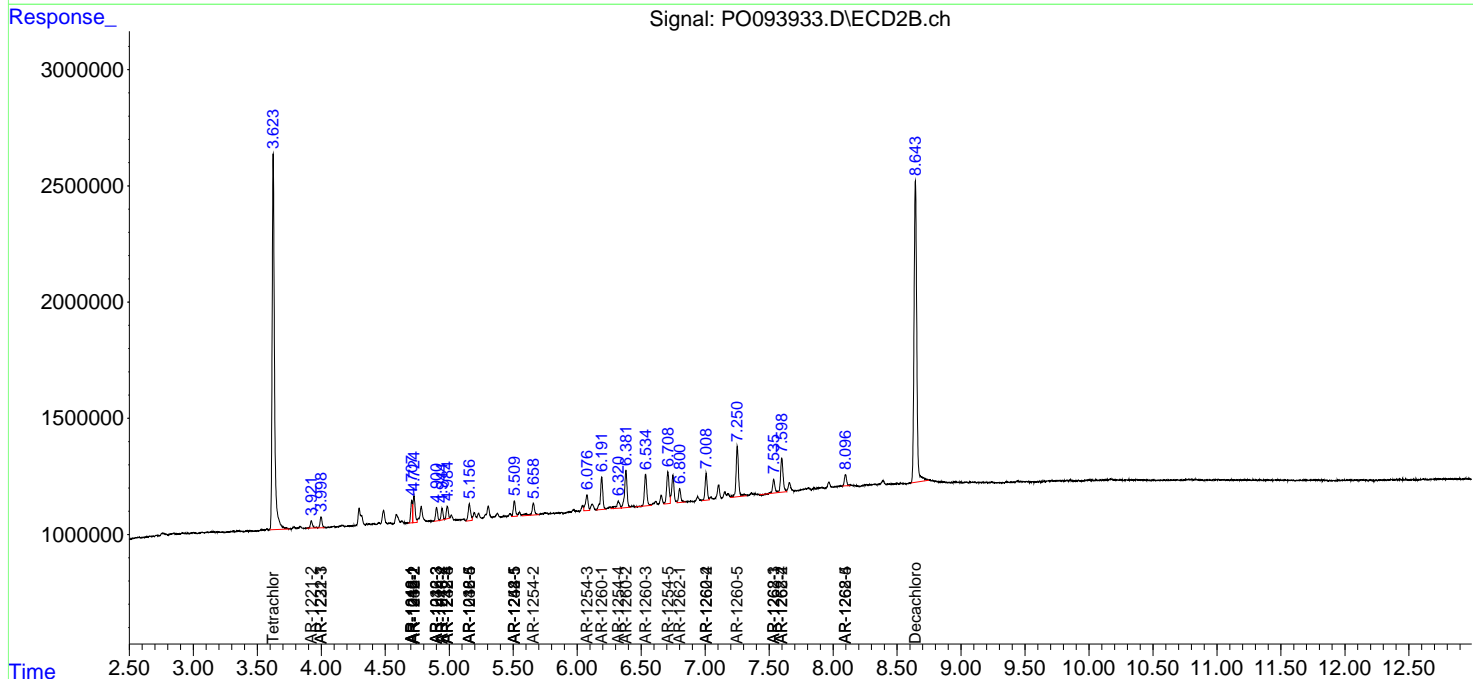
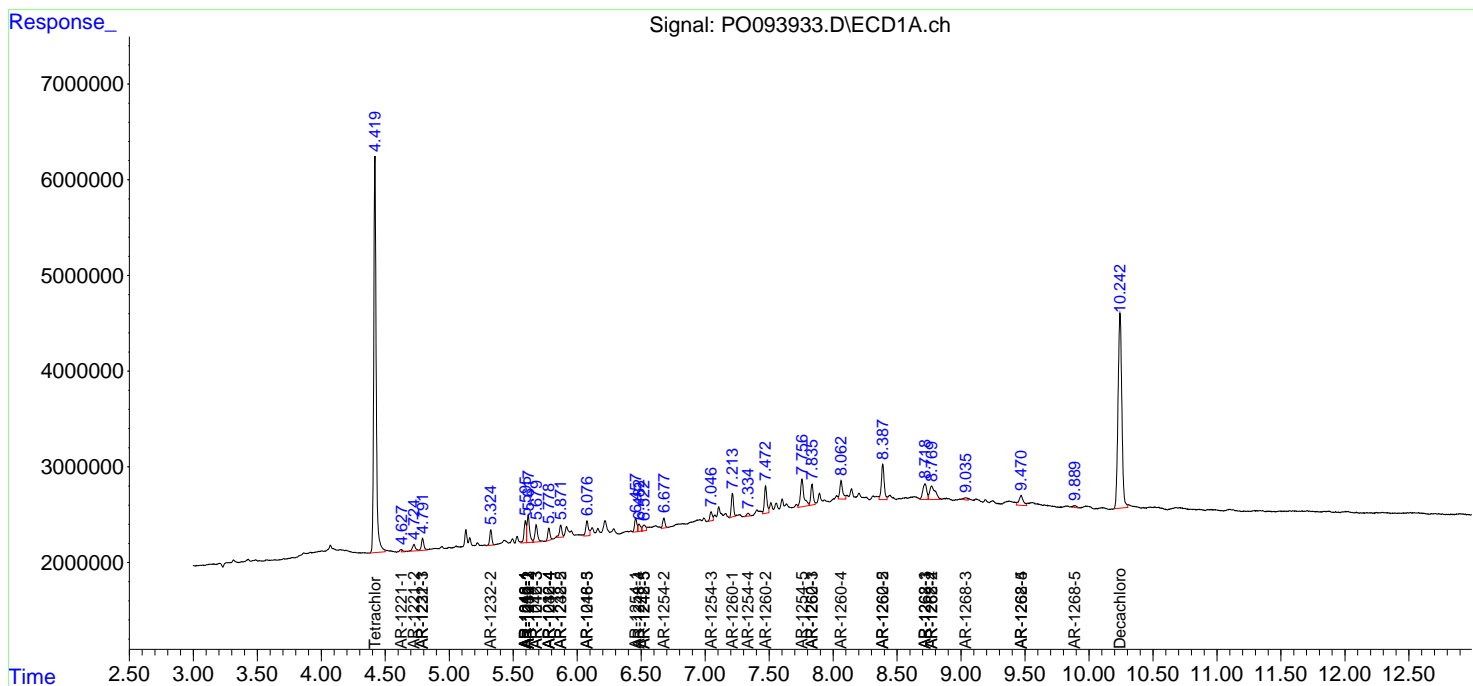
(f)=RT Delta > 1/2 Window (#)=Amounts differ by > 25% (m)=manual int.

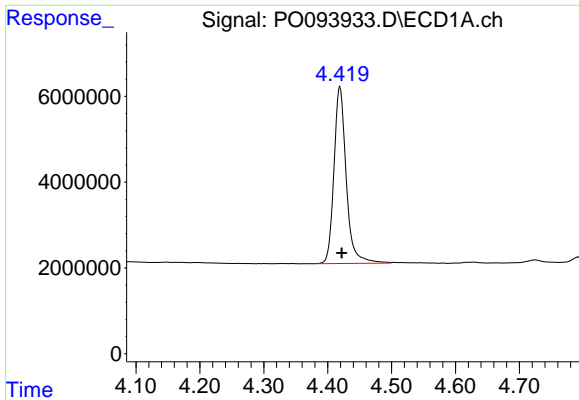
Data Path : Z:\pestpcbsrv\HPCHEM1\ECD_O\Data\PO040723\
 Data File : PO093933.D
 Signal(s) : Signal #1: ECD1A.ch Signal #2: ECD2B.ch
 Acq On : 07 Apr 2023 16:52
 Operator : YP/AJ
 Sample : 02213-01
 Misc : AR1660 LOD 25 PPB
 ALS Vial : 8 Sample Multiplier: 1

Instrument :
 ECD_O
 ClientSampleId :

Integration File signal 1: autoint1.e
 Integration File signal 2: autoint2.e
 Quant Time: Apr 07 22:43:11 2023
 Quant Method : Z:\pestpcbsrv\HPCHEM1\ECD_O\methods\PO040323.M
 Quant Title : GC EXTRACTABLES
 QLast Update : Tue Apr 04 06:20:55 2023
 Response via : Initial Calibration
 Integrator: ChemStation

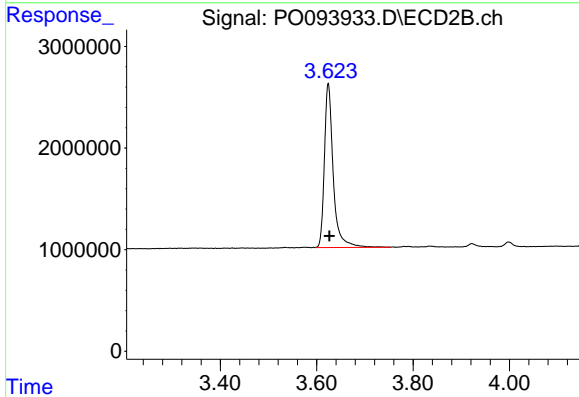
Volume Inj. : 2 µl
 Signal #1 Phase : ZB-MR1 Signal #2 Phase: ZB-MR2
 Signal #1 Info : 30Mx0.32mmx 0.50µ Signal #2 Info : 30M x 0.32mm x 0.25µm



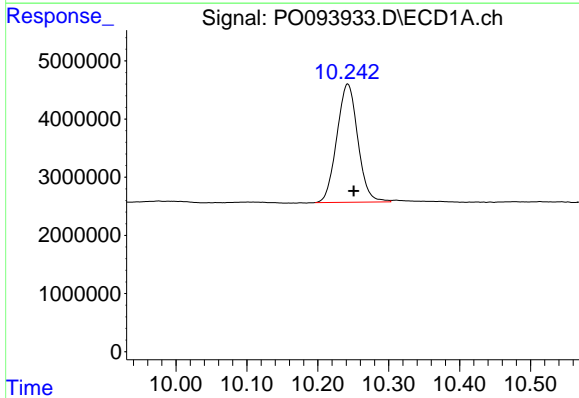


#1 Tetrachloro-m-xylene
 R.T.: 4.419 min
 Delta R.T.: -0.003 min
 Response: 54987804
 Conc: 14.71 ng/ml

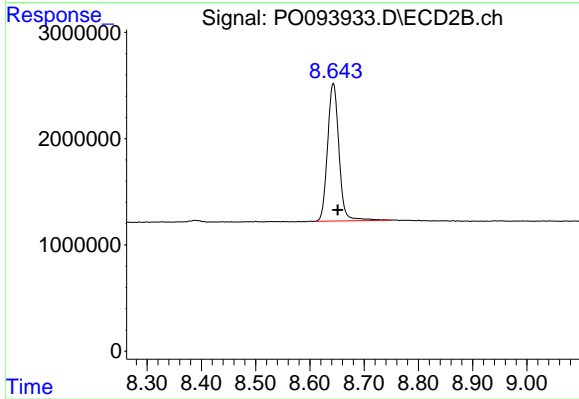
Instrument :
 ECD_O
 ClientSampleId :



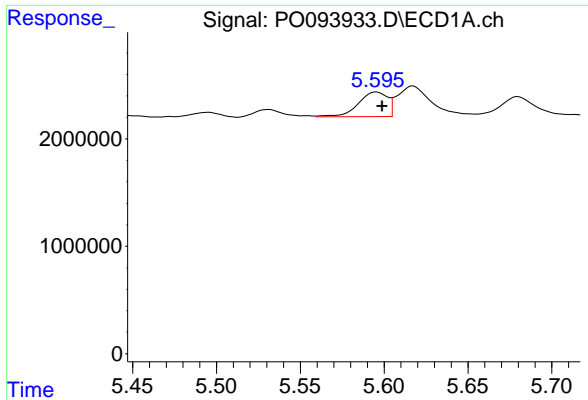
#1 Tetrachloro-m-xylene
 R.T.: 3.624 min
 Delta R.T.: -0.003 min
 Response: 20595076
 Conc: 16.17 ng/ml



#2 Decachlorobiphenyl
 R.T.: 10.242 min
 Delta R.T.: -0.008 min
 Response: 41813316
 Conc: 18.69 ng/ml

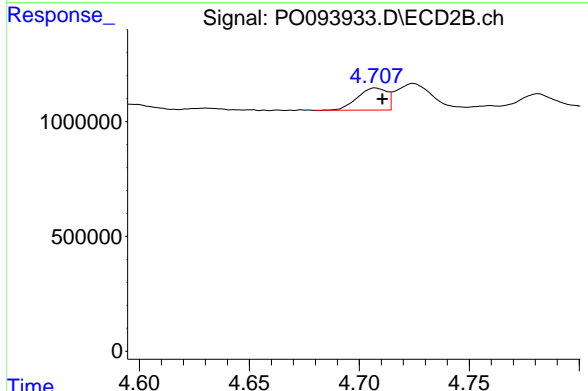


#2 Decachlorobiphenyl
 R.T.: 8.643 min
 Delta R.T.: -0.008 min
 Response: 18943275
 Conc: 18.95 ng/ml

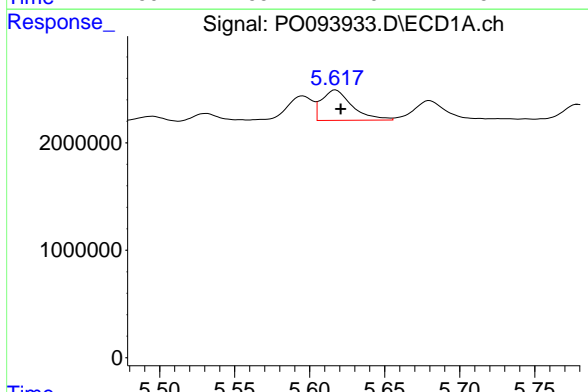


#3 AR-1016-1
 R.T.: 5.595 min
 Delta R.T.: -0.003 min
 Response: 2788851
 Conc: 27.27 ng/ml

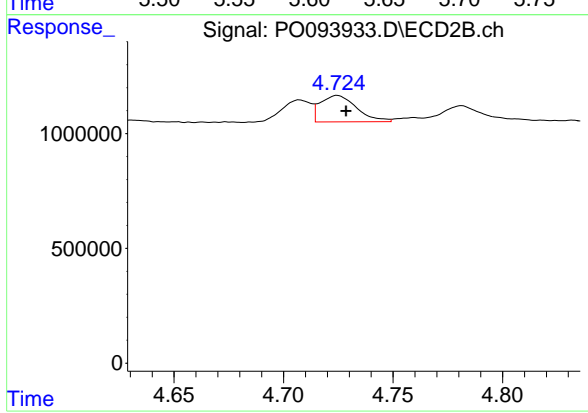
Instrument :
 ECD_O
 ClientSampleId :



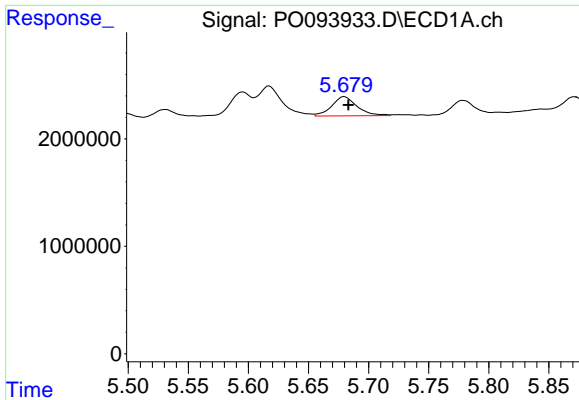
#3 AR-1016-1
 R.T.: 4.707 min
 Delta R.T.: -0.003 min
 Response: 903196
 Conc: 25.45 ng/ml



#4 AR-1016-2
 R.T.: 5.617 min
 Delta R.T.: -0.003 min
 Response: 4005320
 Conc: 25.70 ng/ml



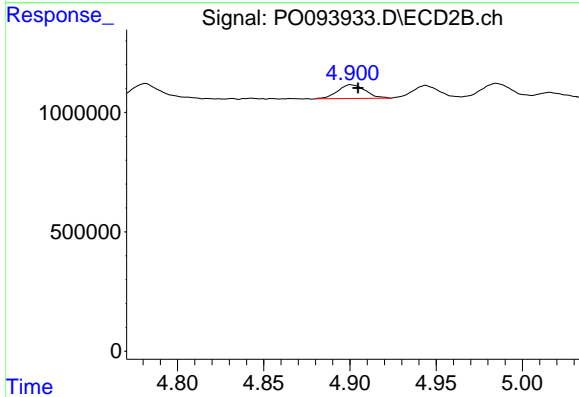
#4 AR-1016-2
 R.T.: 4.725 min
 Delta R.T.: -0.004 min
 Response: 1329027
 Conc: 24.61 ng/ml



#5 AR-1016-3

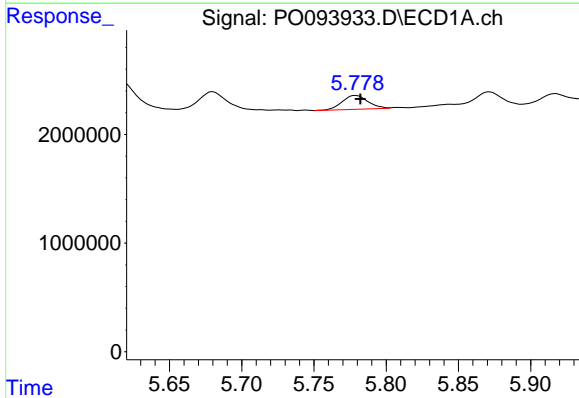
R.T.: 5.680 min
 Delta R.T.: -0.004 min
 Response: 2621411
 Conc: 26.58 ng/ml

Instrument :
 ECD_O
 ClientSampleId :



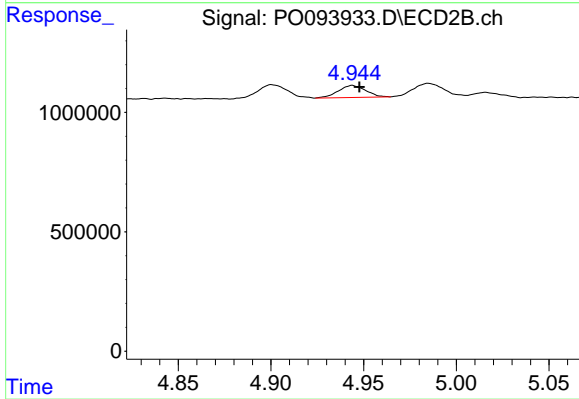
#5 AR-1016-3

R.T.: 4.901 min
 Delta R.T.: -0.004 min
 Response: 641327
 Conc: 22.63 ng/ml



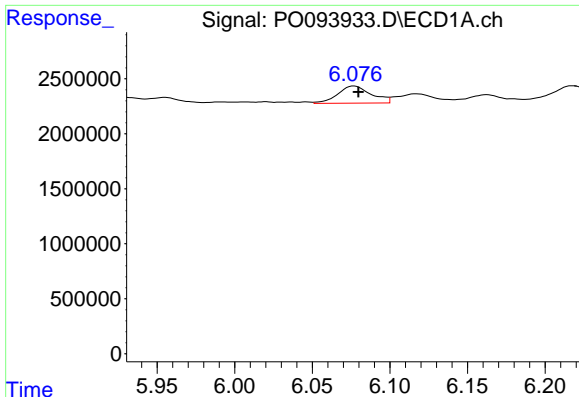
#6 AR-1016-4

R.T.: 5.779 min
 Delta R.T.: -0.003 min
 Response: 1571320
 Conc: 21.37 ng/ml



#6 AR-1016-4

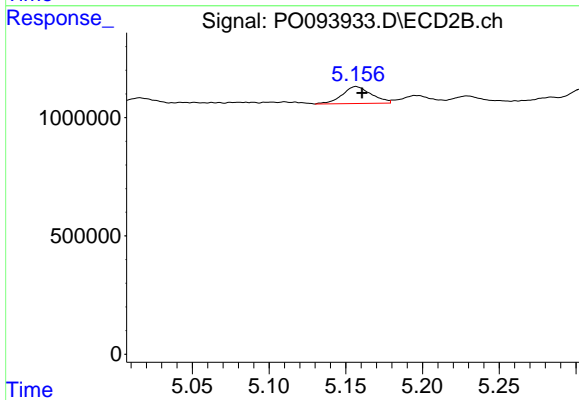
R.T.: 4.944 min
 Delta R.T.: -0.004 min
 Response: 519953
 Conc: 19.69 ng/ml



#7 AR-1016-5

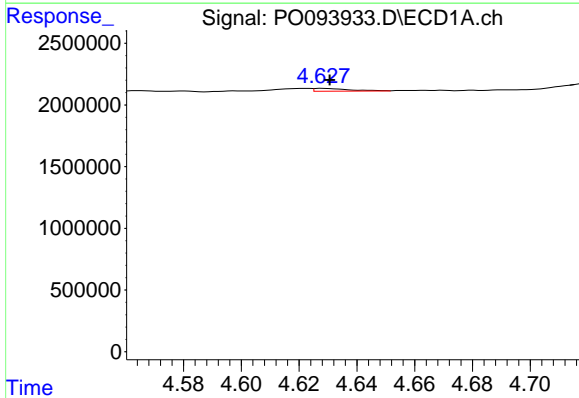
R.T.: 6.077 min
 Delta R.T.: -0.003 min
 Response: 2341663
 Conc: 27.66 ng/ml

Instrument :
 ECD_O
 ClientSampleId :



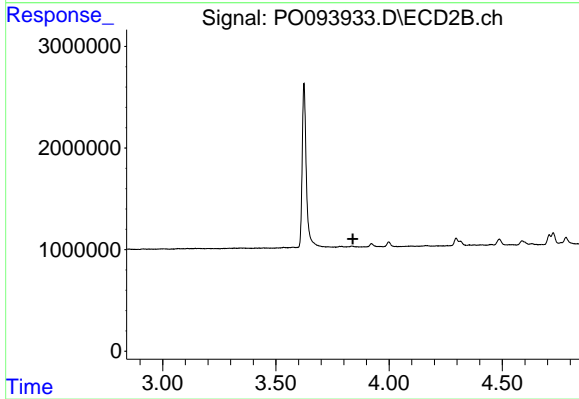
#7 AR-1016-5

R.T.: 5.157 min
 Delta R.T.: -0.004 min
 Response: 949508
 Conc: 29.02 ng/ml



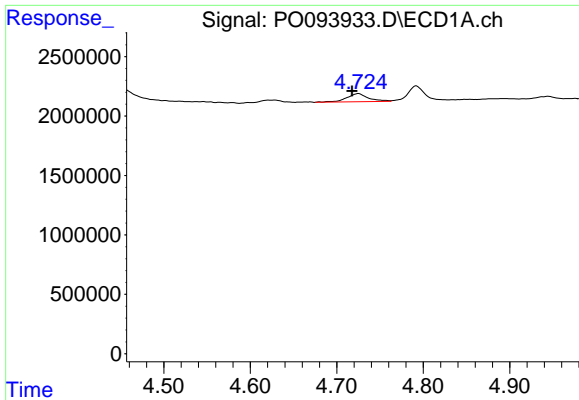
#8 AR-1221-1

R.T.: 4.628 min
 Delta R.T.: -0.002 min
 Response: 204035
 Conc: 4.42 ng/ml



#8 AR-1221-1

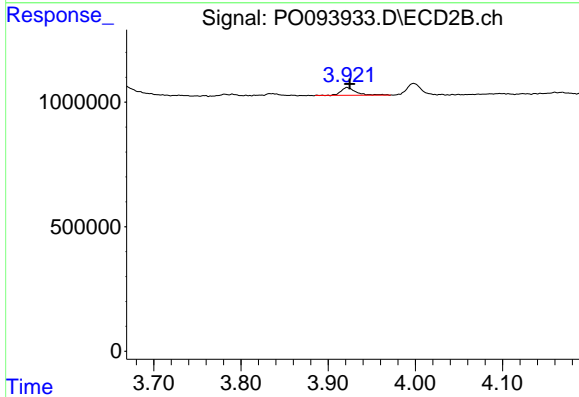
R.T.: 0.000 min
 Exp R.T. : 3.840 min
 Response: 0
 Conc: N.D.



#9 AR-1221-2

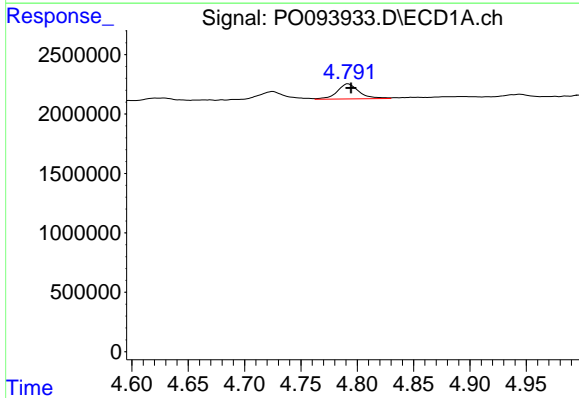
R.T.: 4.725 min
 Delta R.T.: 0.007 min
 Response: 1196036
 Conc: 34.84 ng/ml

Instrument :
 ECD_O
 ClientSampleId :



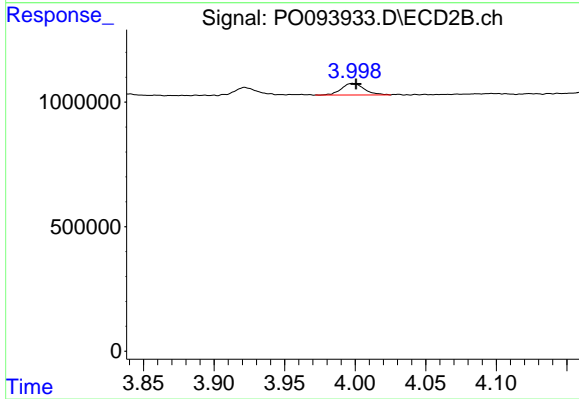
#9 AR-1221-2

R.T.: 3.922 min
 Delta R.T.: -0.003 min
 Response: 375170
 Conc: 31.79 ng/ml



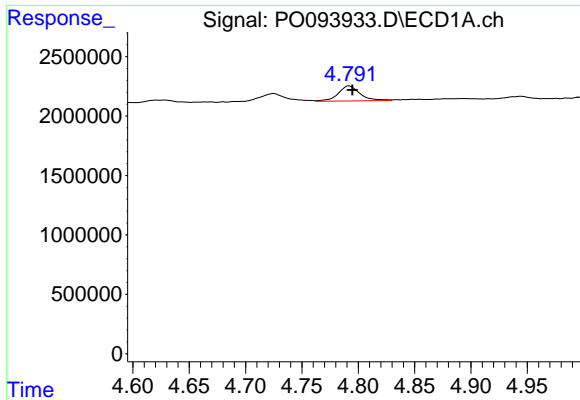
#10 AR-1221-3

R.T.: 4.792 min
 Delta R.T.: -0.003 min
 Response: 1717183
 Conc: 16.40 ng/ml



#10 AR-1221-3

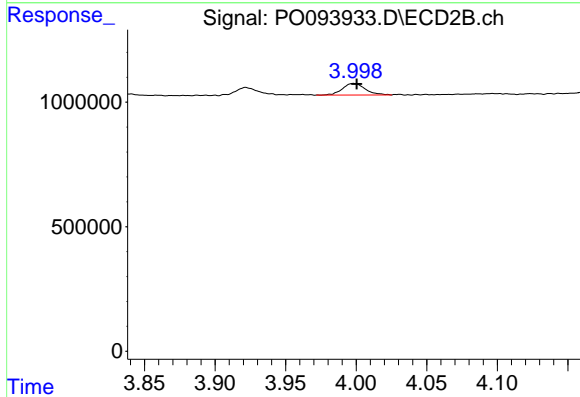
R.T.: 3.998 min
 Delta R.T.: -0.002 min
 Response: 524120
 Conc: 14.23 ng/ml



#11 AR-1232-1

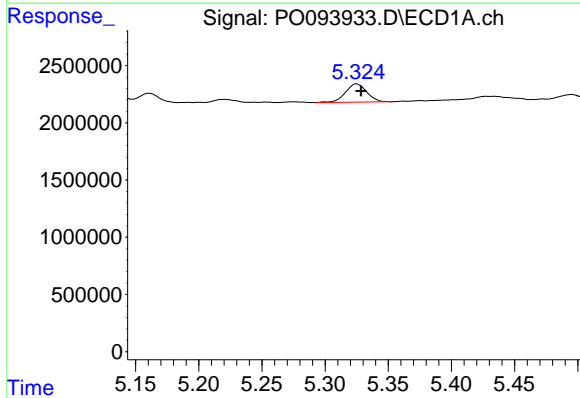
R.T.: 4.792 min
 Delta R.T.: -0.003 min
 Response: 1717183
 Conc: 19.68 ng/ml

Instrument :
 ECD_O
 ClientSampleId :



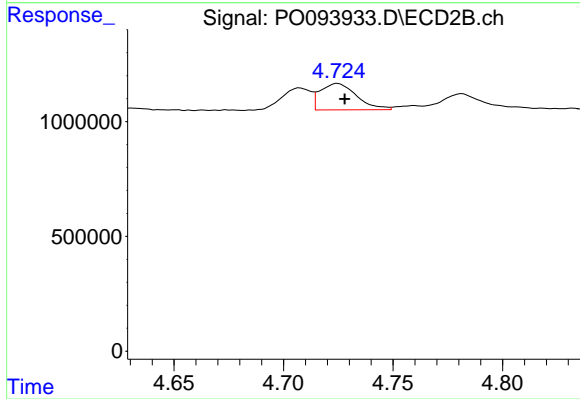
#11 AR-1232-1

R.T.: 3.998 min
 Delta R.T.: -0.002 min
 Response: 524120
 Conc: 16.78 ng/ml



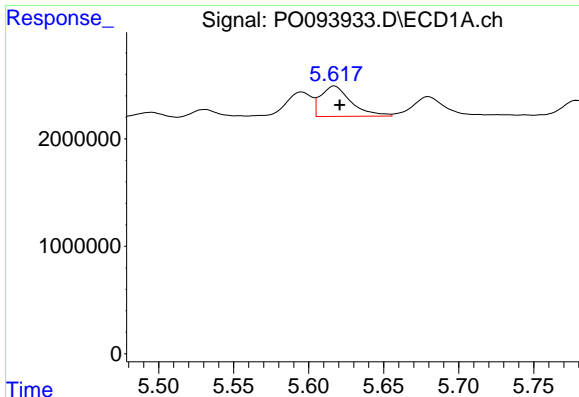
#12 AR-1232-2

R.T.: 5.325 min
 Delta R.T.: -0.003 min
 Response: 1878746
 Conc: 43.93 ng/ml



#12 AR-1232-2

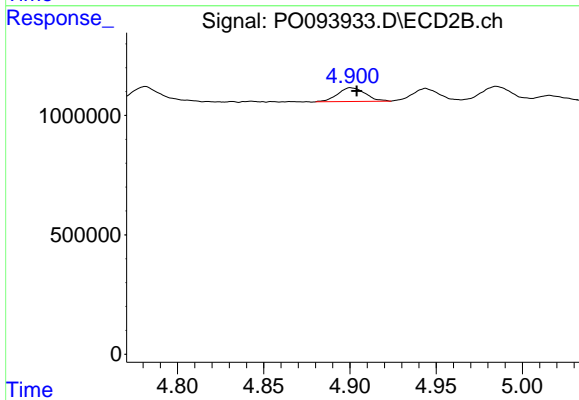
R.T.: 4.725 min
 Delta R.T.: -0.003 min
 Response: 1329027
 Conc: 50.20 ng/ml



#13 AR-1232-3

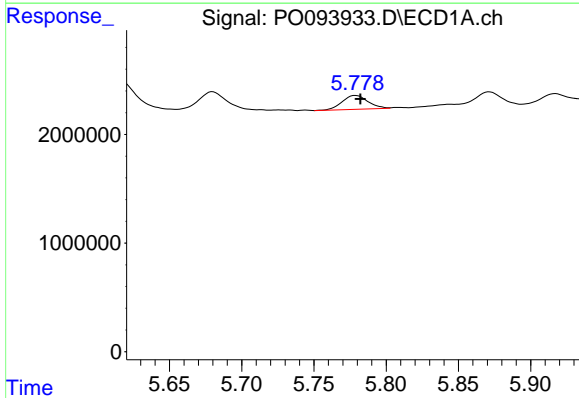
R.T.: 5.617 min
 Delta R.T.: -0.003 min
 Response: 4005320
 Conc: 54.53 ng/ml

Instrument :
 ECD_O
 ClientSampleId :



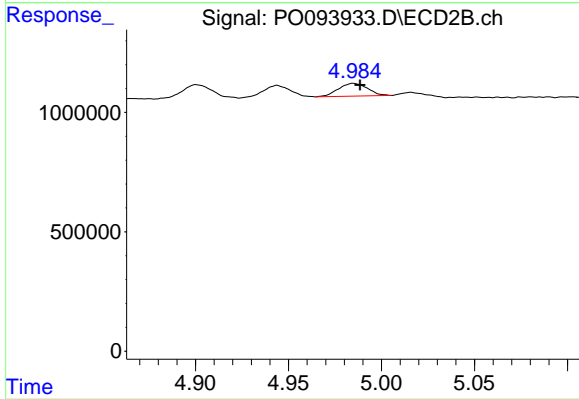
#13 AR-1232-3

R.T.: 4.901 min
 Delta R.T.: -0.003 min
 Response: 641327
 Conc: 48.63 ng/ml



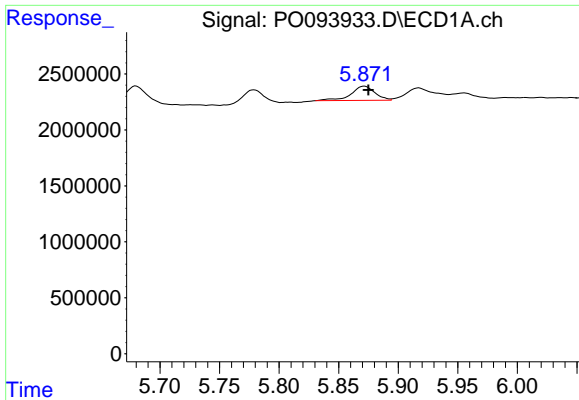
#14 AR-1232-4

R.T.: 5.779 min
 Delta R.T.: -0.003 min
 Response: 1571320
 Conc: 45.65 ng/ml



#14 AR-1232-4

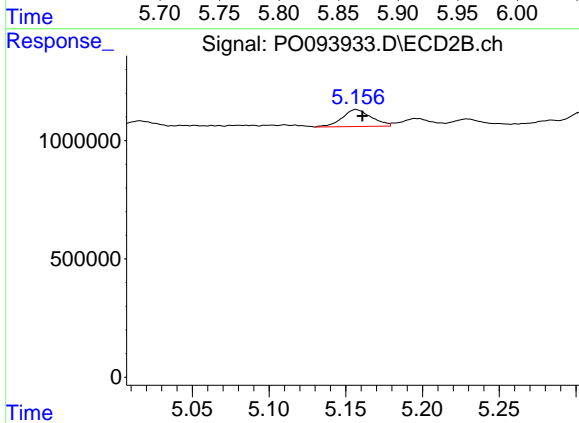
R.T.: 4.985 min
 Delta R.T.: -0.003 min
 Response: 583783
 Conc: 41.08 ng/ml



#15 AR-1232-5

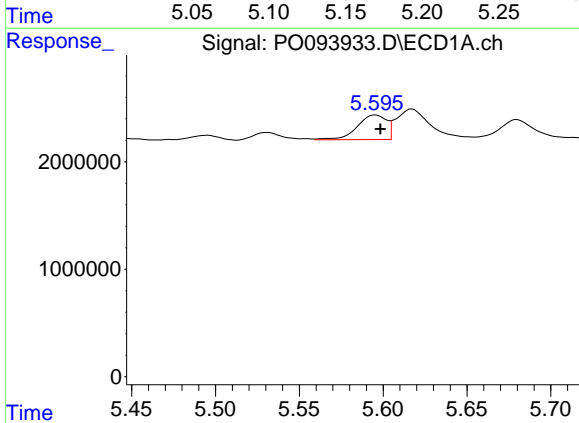
R.T.: 5.872 min
 Delta R.T.: -0.003 min
 Response: 1787415
 Conc: 56.27 ng/ml

Instrument :
 ECD_O
 ClientSampleId :



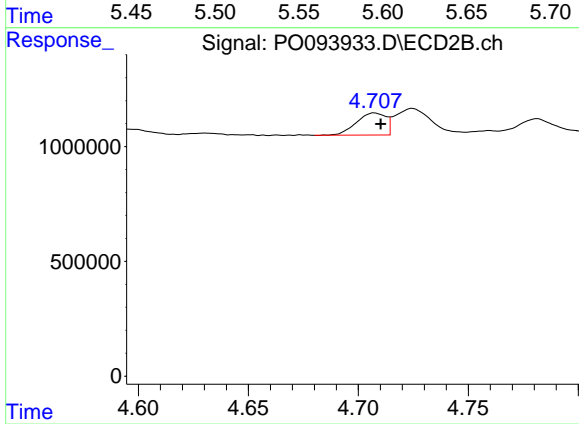
#15 AR-1232-5

R.T.: 5.157 min
 Delta R.T.: -0.004 min
 Response: 949508
 Conc: 61.46 ng/ml



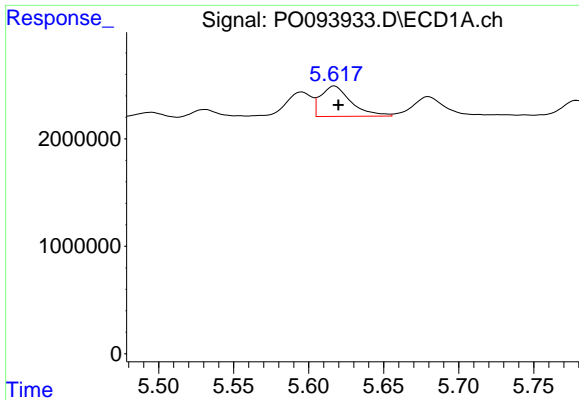
#16 AR-1242-1

R.T.: 5.595 min
 Delta R.T.: -0.003 min
 Response: 2788851
 Conc: 31.95 ng/ml



#16 AR-1242-1

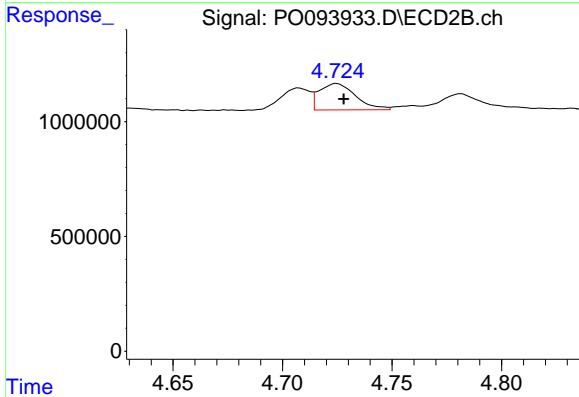
R.T.: 4.707 min
 Delta R.T.: -0.003 min
 Response: 903196
 Conc: 29.35 ng/ml



#17 AR-1242-2

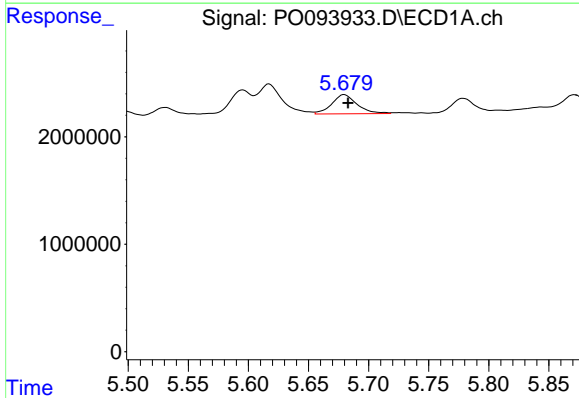
R.T.: 5.617 min
 Delta R.T.: -0.003 min
 Response: 4005320
 Conc: 30.12 ng/ml

Instrument :
 ECD_O
 ClientSampleId :



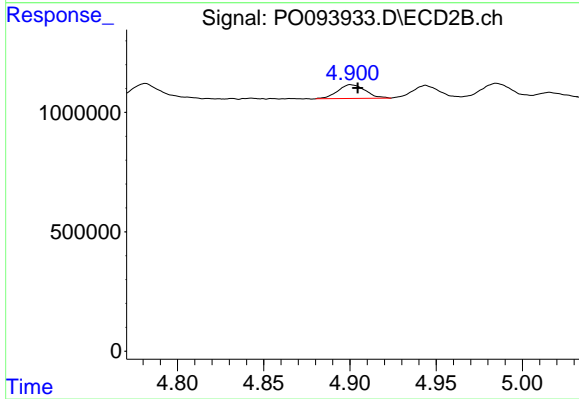
#17 AR-1242-2

R.T.: 4.725 min
 Delta R.T.: -0.003 min
 Response: 1329027
 Conc: 28.90 ng/ml



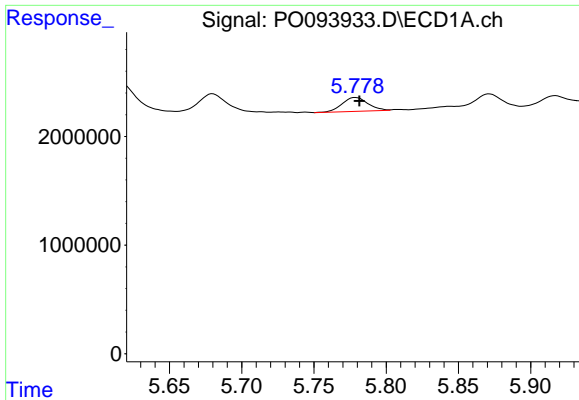
#18 AR-1242-3

R.T.: 5.680 min
 Delta R.T.: -0.003 min
 Response: 2621411
 Conc: 30.88 ng/ml



#18 AR-1242-3

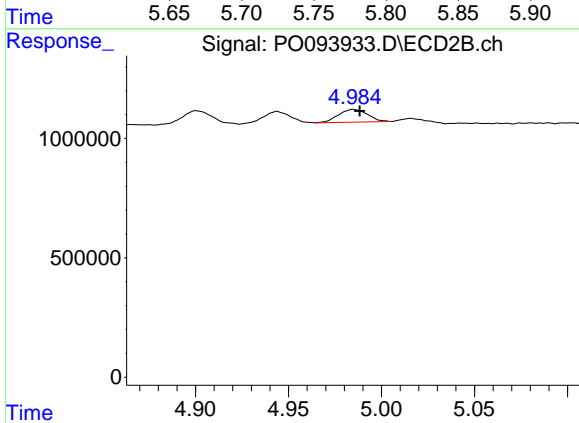
R.T.: 4.901 min
 Delta R.T.: -0.004 min
 Response: 641327
 Conc: 26.46 ng/ml



#19 AR-1242-4

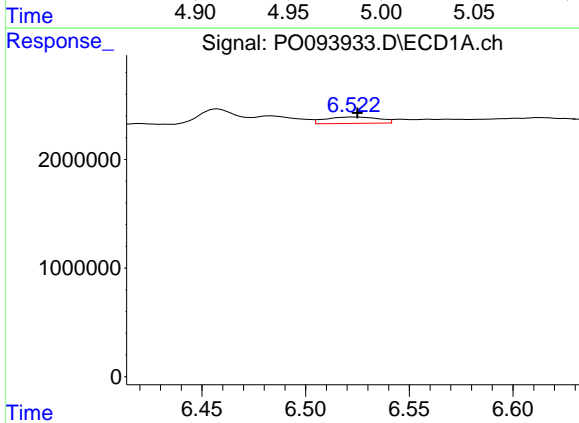
R.T.: 5.779 min
 Delta R.T.: -0.003 min
 Response: 1571320
 Conc: 25.15 ng/ml

Instrument :
 ECD_O
 ClientSampleId :



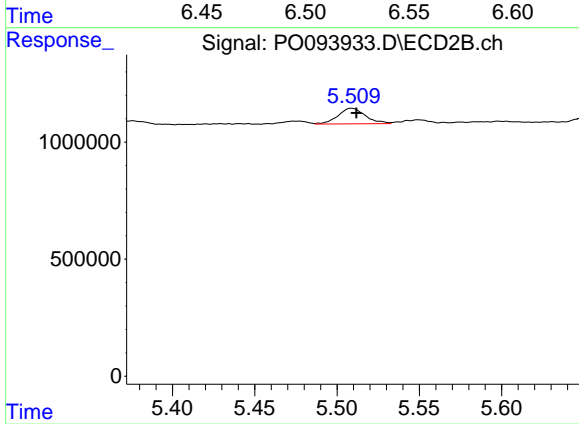
#19 AR-1242-4

R.T.: 4.985 min
 Delta R.T.: -0.003 min
 Response: 583783
 Conc: 20.79 ng/ml



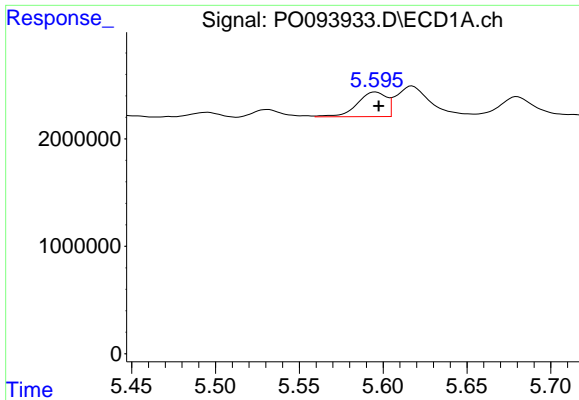
#20 AR-1242-5

R.T.: 6.523 min
 Delta R.T.: -0.002 min
 Response: 1051231
 Conc: 15.61 ng/ml



#20 AR-1242-5

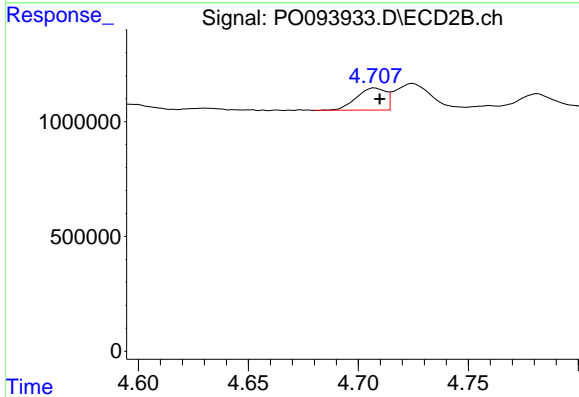
R.T.: 5.509 min
 Delta R.T.: -0.003 min
 Response: 776331
 Conc: 27.23 ng/ml



#21 AR-1248-1

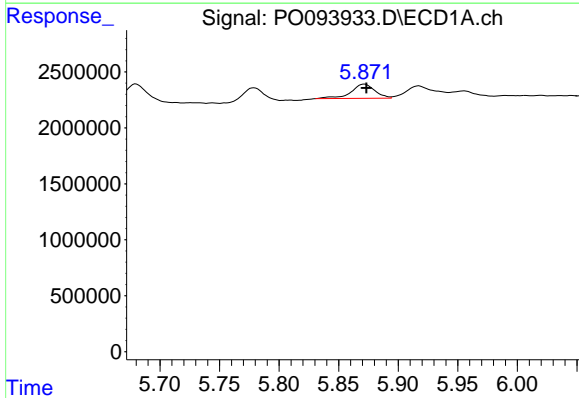
R.T.: 5.595 min
 Delta R.T.: -0.002 min
 Response: 2788851
 Conc: 41.45 ng/ml

Instrument :
 ECD_O
 ClientSampleId :



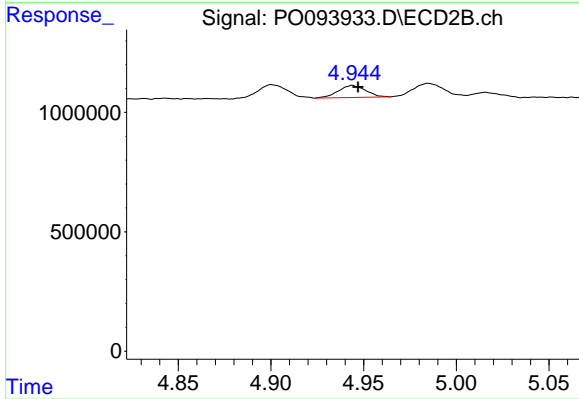
#21 AR-1248-1

R.T.: 4.707 min
 Delta R.T.: -0.002 min
 Response: 903196
 Conc: 37.87 ng/ml



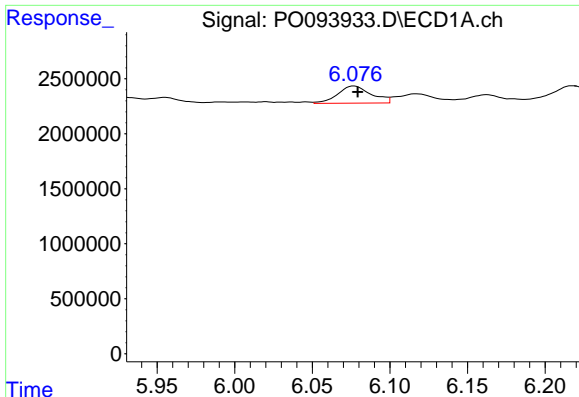
#22 AR-1248-2

R.T.: 5.872 min
 Delta R.T.: -0.002 min
 Response: 1787415
 Conc: 16.34 ng/ml



#22 AR-1248-2

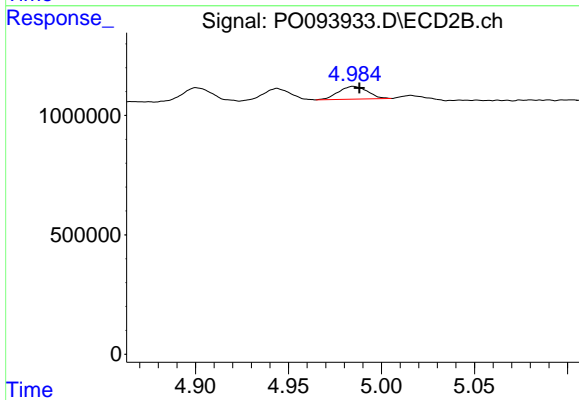
R.T.: 4.944 min
 Delta R.T.: -0.003 min
 Response: 519953
 Conc: 13.05 ng/ml



#23 AR-1248-3

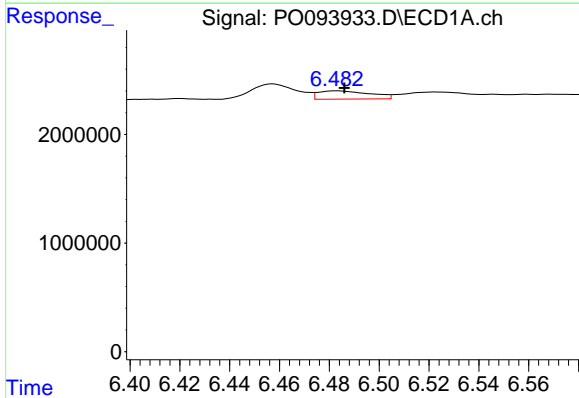
R.T.: 6.077 min
 Delta R.T.: -0.002 min
 Response: 2341663
 Conc: 19.40 ng/ml

Instrument :
 ECD_O
 ClientSampleId :



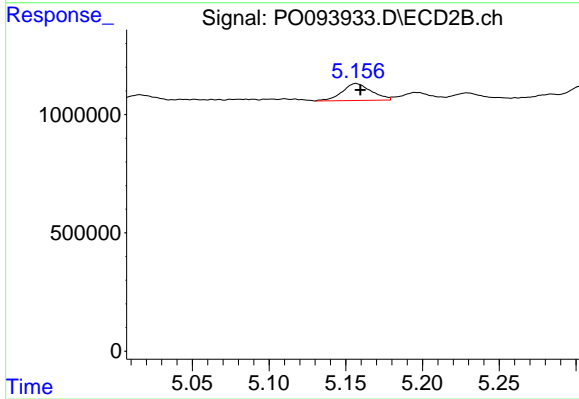
#23 AR-1248-3

R.T.: 4.985 min
 Delta R.T.: -0.003 min
 Response: 583783
 Conc: 13.99 ng/ml



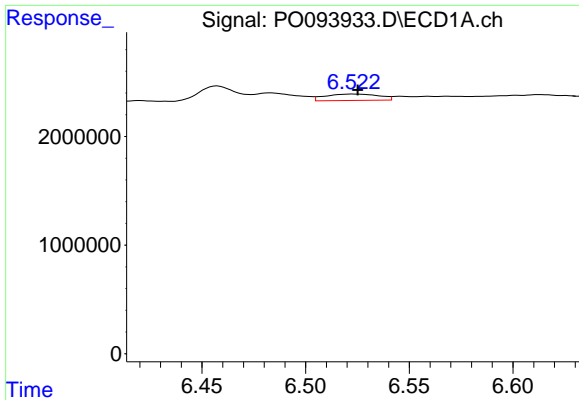
#24 AR-1248-4

R.T.: 6.483 min
 Delta R.T.: -0.003 min
 Response: 1092765
 Conc: 10.17 ng/ml



#24 AR-1248-4

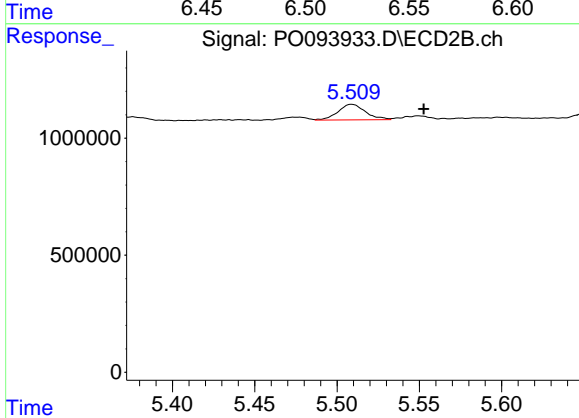
R.T.: 5.157 min
 Delta R.T.: -0.003 min
 Response: 949508
 Conc: 20.19 ng/ml



#25 AR-1248-5

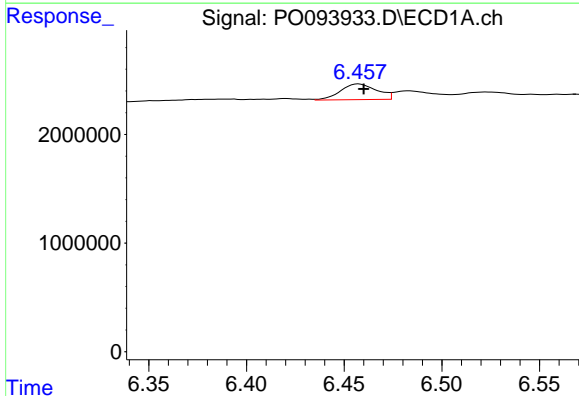
R.T.: 6.523 min
 Delta R.T.: -0.002 min
 Response: 1051231
 Conc: 9.06 ng/ml

Instrument :
 ECD_O
 ClientSampleId :



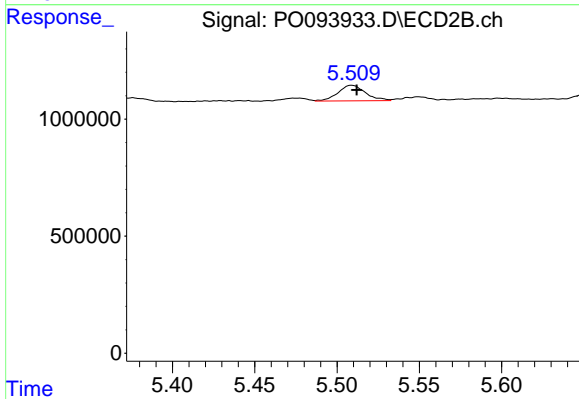
#25 AR-1248-5

R.T.: 5.509 min
 Delta R.T.: -0.044 min
 Response: 776331
 Conc: 20.79 ng/ml



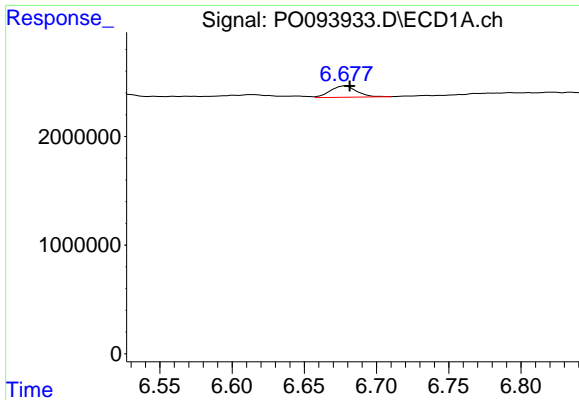
#26 AR-1254-1

R.T.: 6.457 min
 Delta R.T.: -0.002 min
 Response: 1876036
 Conc: 13.83 ng/ml



#26 AR-1254-1

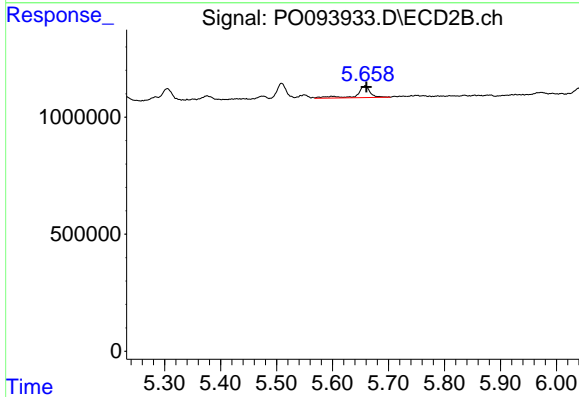
R.T.: 5.509 min
 Delta R.T.: -0.003 min
 Response: 776331
 Conc: 11.36 ng/ml



#27 AR-1254-2

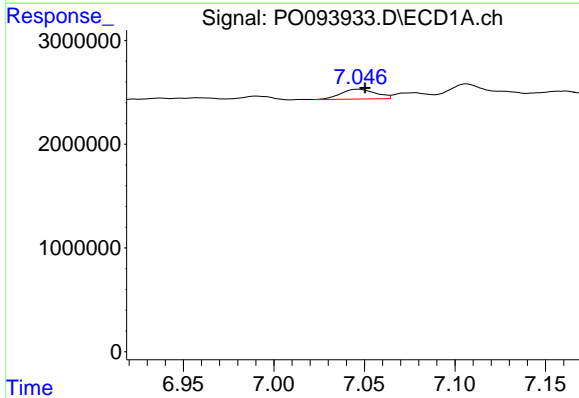
R.T.: 6.678 min
 Delta R.T.: -0.003 min
 Response: 1337608
 Conc: 6.84 ng/ml

Instrument :
 ECD_O
 ClientSampleId :



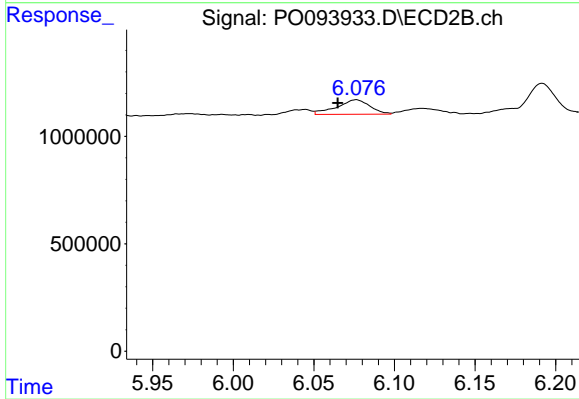
#27 AR-1254-2

R.T.: 5.658 min
 Delta R.T.: -0.002 min
 Response: 830837
 Conc: 13.64 ng/ml



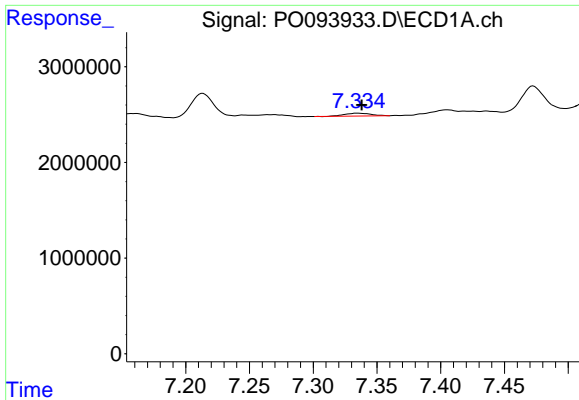
#28 AR-1254-3

R.T.: 7.047 min
 Delta R.T.: -0.004 min
 Response: 1259645
 Conc: 6.82 ng/ml



#28 AR-1254-3

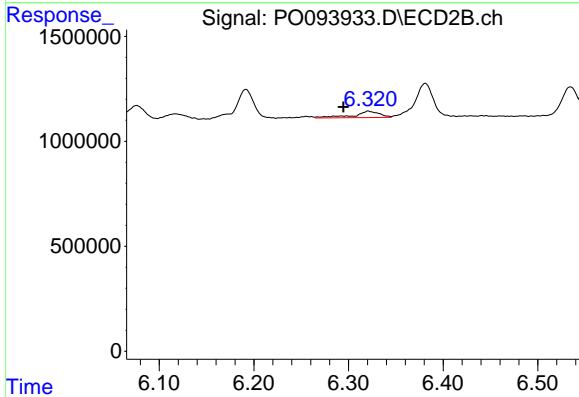
R.T.: 6.076 min
 Delta R.T.: 0.011 min
 Response: 965713
 Conc: 10.60 ng/ml



#29 AR-1254-4

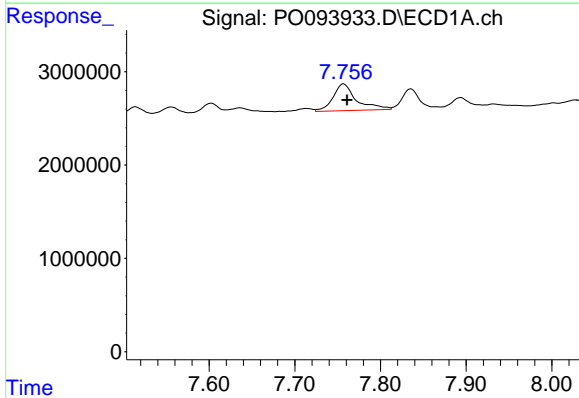
R.T.: 7.335 min
 Delta R.T.: -0.003 min
 Response: 423535
 Conc: 4.18 ng/ml

Instrument :
 ECD_O
 ClientSampleId :



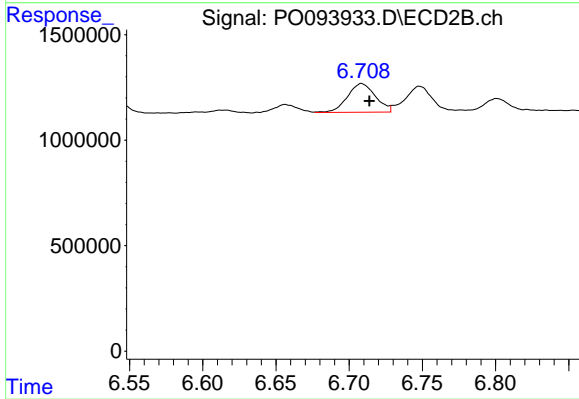
#29 AR-1254-4

R.T.: 6.321 min
 Delta R.T.: 0.026 min
 Response: 572844
 Conc: 13.45 ng/ml



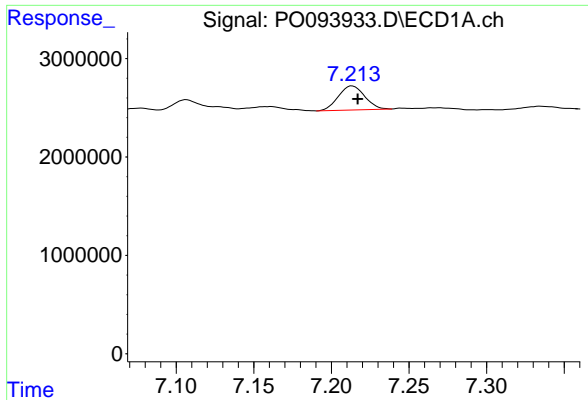
#30 AR-1254-5

R.T.: 7.757 min
 Delta R.T.: -0.004 min
 Response: 5446573
 Conc: 40.17 ng/ml



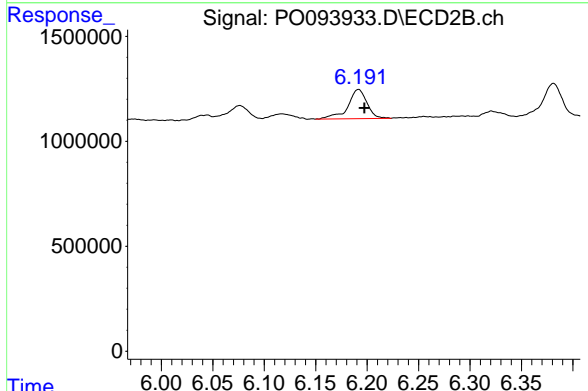
#30 AR-1254-5

R.T.: 6.709 min
 Delta R.T.: -0.005 min
 Response: 1810782
 Conc: 25.10 ng/ml

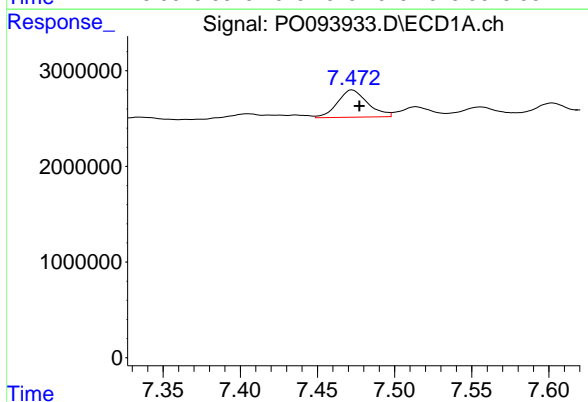


#31 AR-1260-1
 R.T.: 7.213 min
 Delta R.T.: -0.004 min
 Response: 2885546
 Conc: 19.77 ng/ml

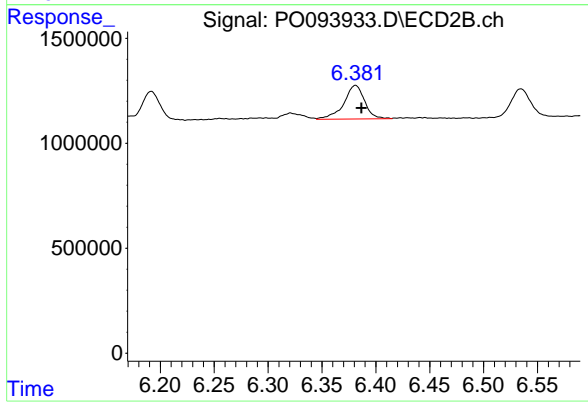
Instrument :
 ECD_O
 ClientSampleId :



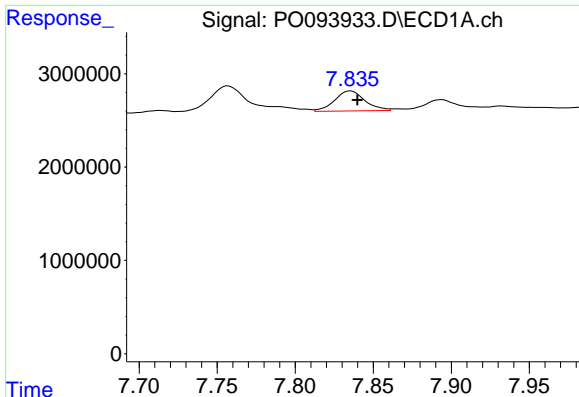
#31 AR-1260-1
 R.T.: 6.192 min
 Delta R.T.: -0.006 min
 Response: 1801876
 Conc: 27.63 ng/ml



#32 AR-1260-2
 R.T.: 7.473 min
 Delta R.T.: -0.005 min
 Response: 3866799
 Conc: 24.16 ng/ml



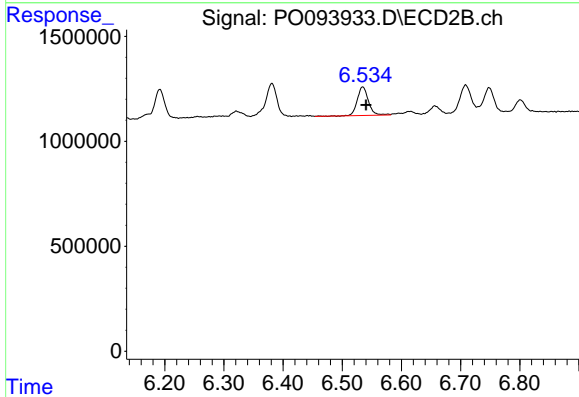
#32 AR-1260-2
 R.T.: 6.381 min
 Delta R.T.: -0.006 min
 Response: 2150059
 Conc: 29.61 ng/ml



#33 AR-1260-3

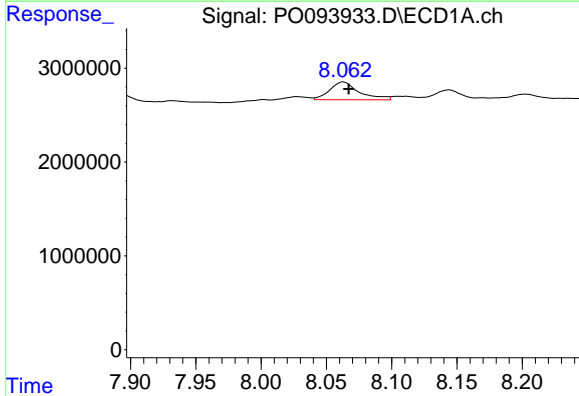
R.T.: 7.836 min
 Delta R.T.: -0.004 min
 Response: 2894665
 Conc: 21.80 ng/ml

Instrument :
 ECD_O
 ClientSampleId :



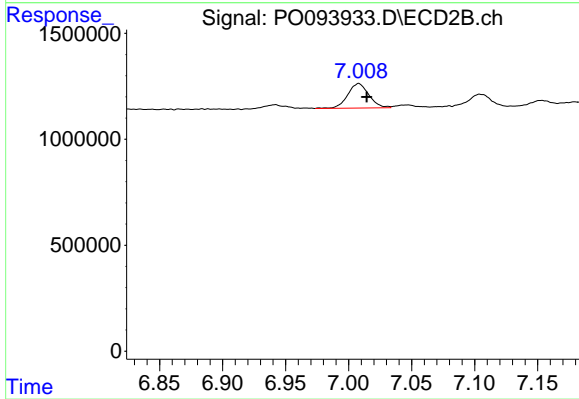
#33 AR-1260-3

R.T.: 6.535 min
 Delta R.T.: -0.006 min
 Response: 1771042
 Conc: 24.40 ng/ml



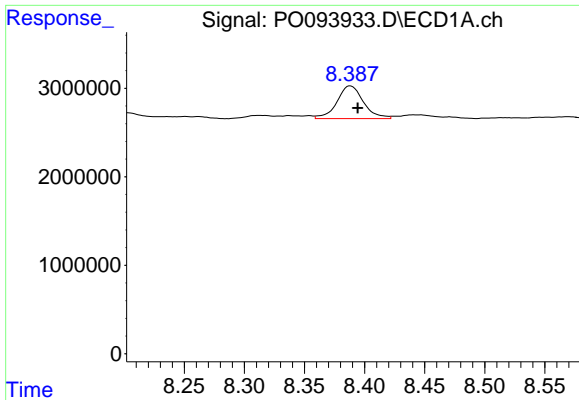
#34 AR-1260-4

R.T.: 8.063 min
 Delta R.T.: -0.004 min
 Response: 3007866
 Conc: 21.84 ng/ml



#34 AR-1260-4

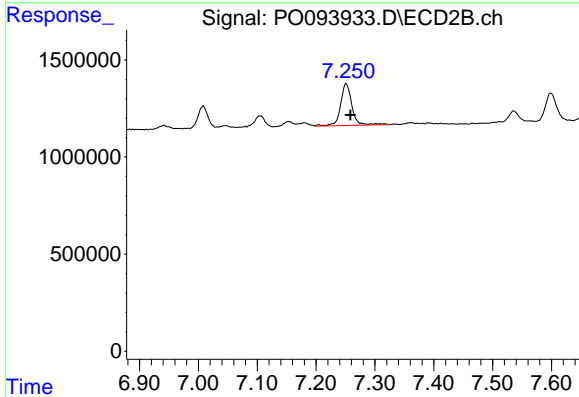
R.T.: 7.008 min
 Delta R.T.: -0.006 min
 Response: 1353793
 Conc: 24.38 ng/ml



#35 AR-1260-5

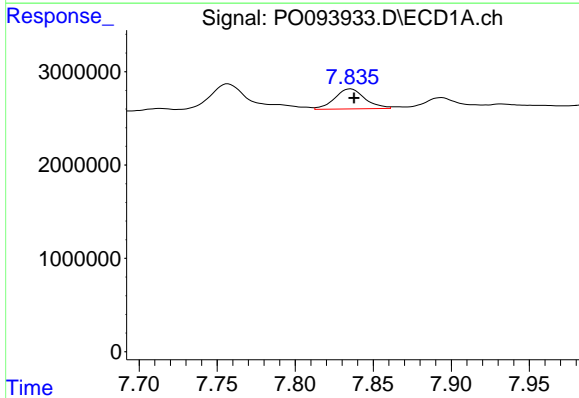
R.T.: 8.388 min
 Delta R.T.: -0.006 min
 Response: 5692712
 Conc: 26.14 ng/ml

Instrument :
 ECD_O
 ClientSampleId :



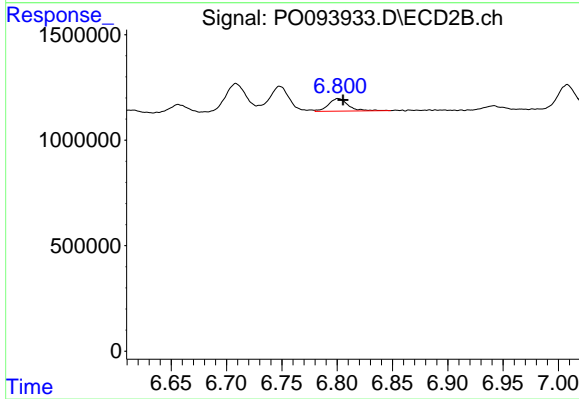
#35 AR-1260-5

R.T.: 7.251 min
 Delta R.T.: -0.007 min
 Response: 2915117
 Conc: 28.09 ng/ml



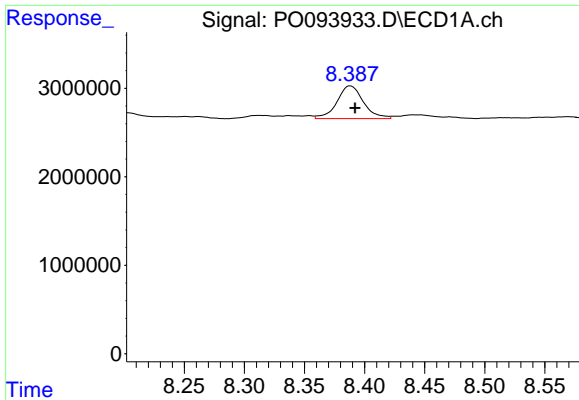
#36 AR-1262-1

R.T.: 7.836 min
 Delta R.T.: -0.002 min
 Response: 2894665
 Conc: 16.95 ng/ml



#36 AR-1262-1

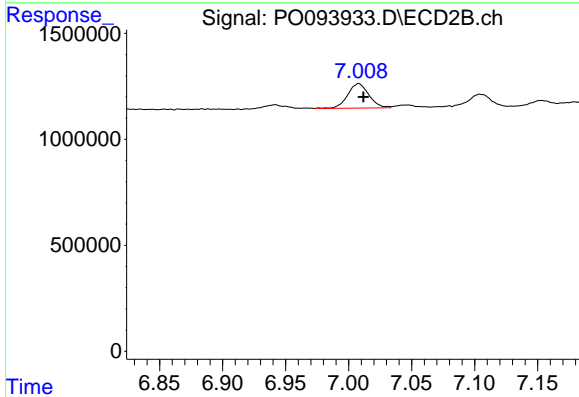
R.T.: 6.801 min
 Delta R.T.: -0.004 min
 Response: 744672
 Conc: 21.28 ng/ml



#37 AR-1262-2

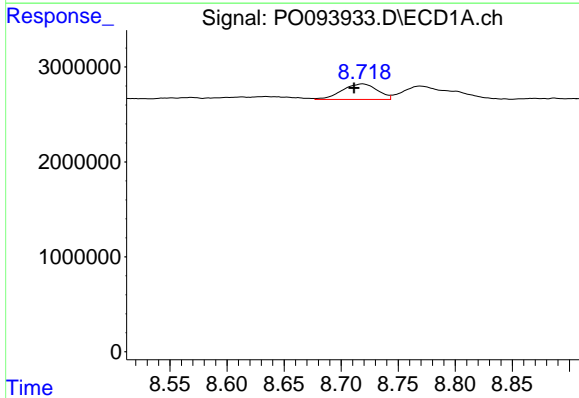
R.T.: 8.388 min
 Delta R.T.: -0.004 min
 Response: 5692712
 Conc: 24.49 ng/ml

Instrument :
 ECD_O
 ClientSampleId :



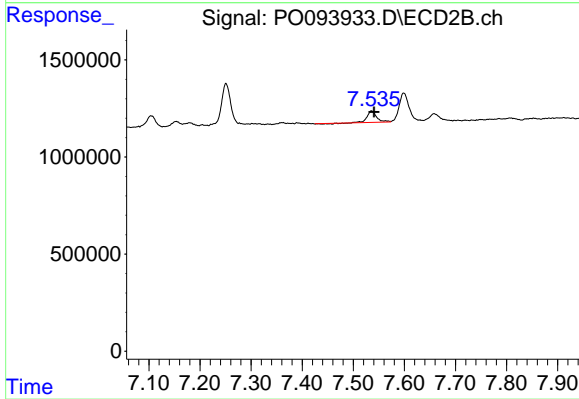
#37 AR-1262-2

R.T.: 7.008 min
 Delta R.T.: -0.004 min
 Response: 1353793
 Conc: 19.16 ng/ml



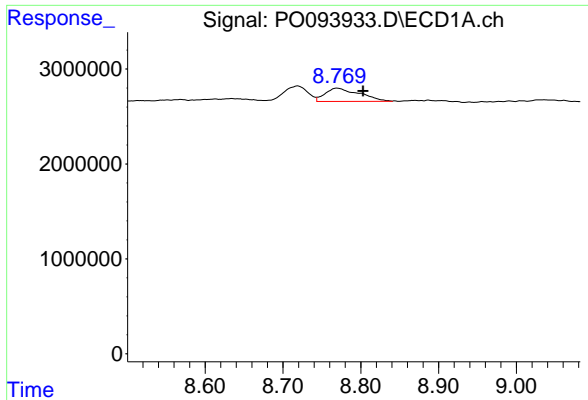
#38 AR-1262-3

R.T.: 8.719 min
 Delta R.T.: 0.007 min
 Response: 3505875
 Conc: 21.40 ng/ml



#38 AR-1262-3

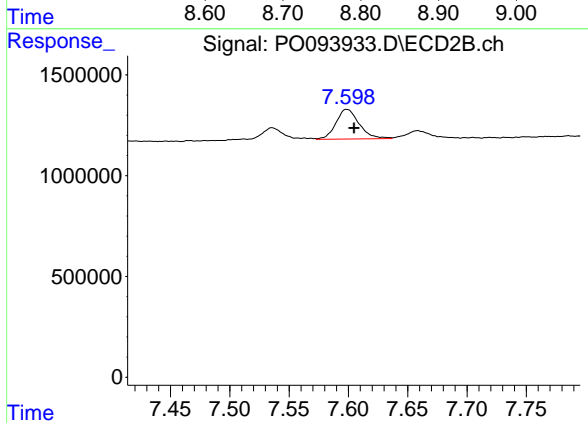
R.T.: 7.536 min
 Delta R.T.: -0.005 min
 Response: 749705
 Conc: 14.98 ng/ml



#39 AR-1262-4

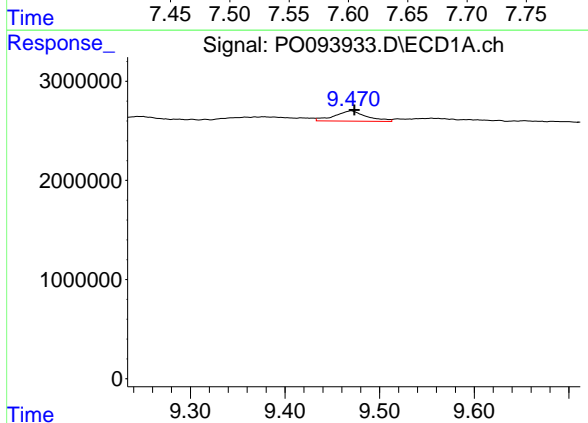
R.T.: 8.770 min
 Delta R.T.: -0.033 min
 Response: 4312657
 Conc: 43.04 ng/ml

Instrument :
 ECD_O
 ClientSampleId :



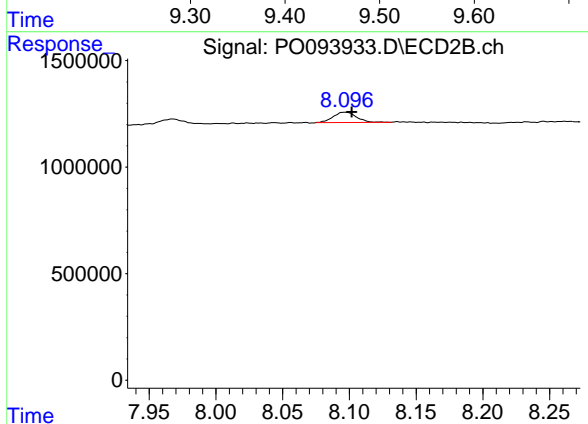
#39 AR-1262-4

R.T.: 7.599 min
 Delta R.T.: -0.006 min
 Response: 2003346
 Conc: 24.16 ng/ml



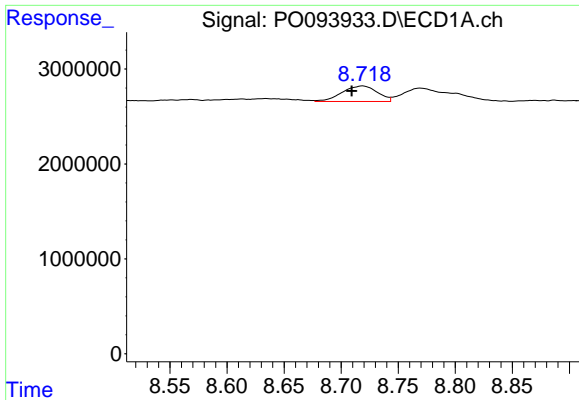
#40 AR-1262-5

R.T.: 9.470 min
 Delta R.T.: -0.003 min
 Response: 2456670
 Conc: 30.52 ng/ml



#40 AR-1262-5

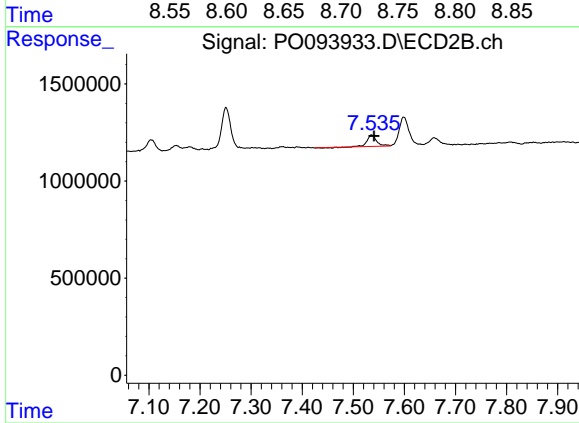
R.T.: 8.097 min
 Delta R.T.: -0.005 min
 Response: 588412
 Conc: 18.09 ng/ml



#41 AR-1268-1

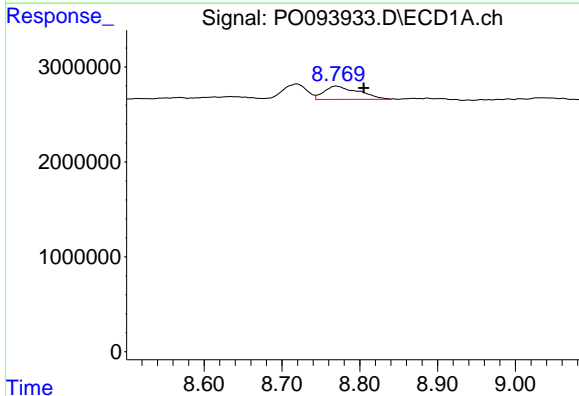
R.T.: 8.719 min
 Delta R.T.: 0.010 min
 Response: 3505875
 Conc: 10.42 ng/ml

Instrument :
 ECD_O
 ClientSampleId :



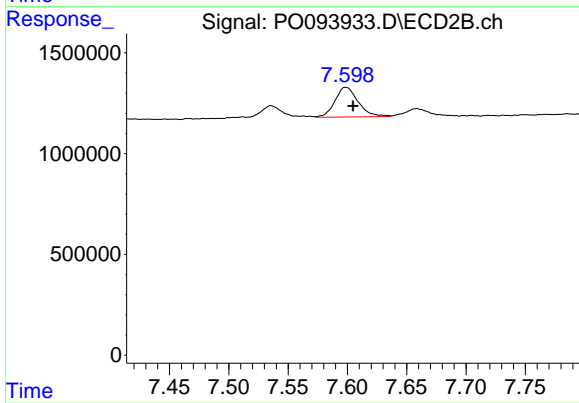
#41 AR-1268-1

R.T.: 7.536 min
 Delta R.T.: -0.005 min
 Response: 749705
 Conc: 4.91 ng/ml



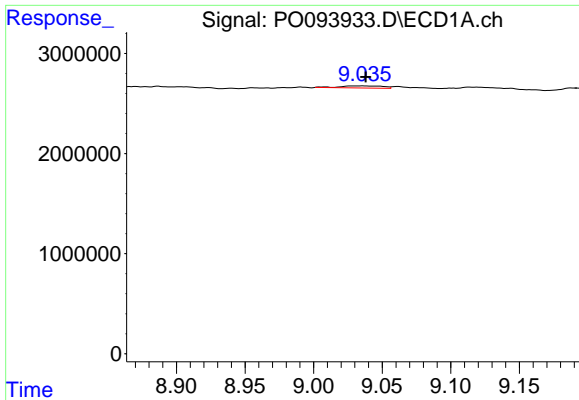
#42 AR-1268-2

R.T.: 8.770 min
 Delta R.T.: -0.035 min
 Response: 4312657
 Conc: 13.40 ng/ml



#42 AR-1268-2

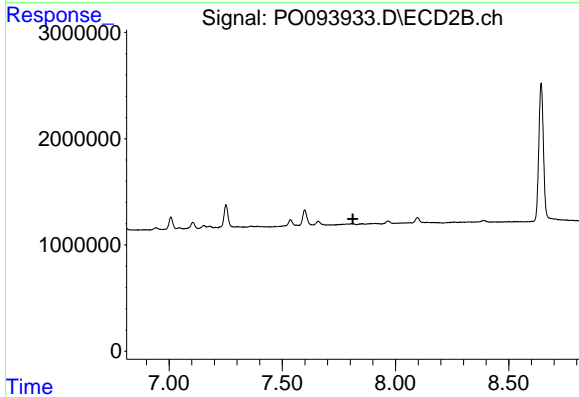
R.T.: 7.599 min
 Delta R.T.: -0.006 min
 Response: 2003346
 Conc: 14.75 ng/ml



#43 AR-1268-3

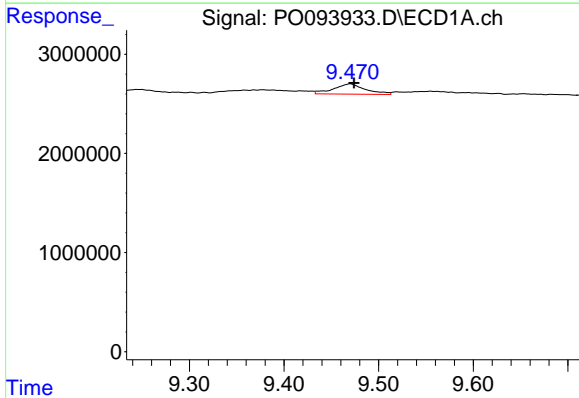
R.T.: 9.036 min
 Delta R.T.: -0.003 min
 Response: 435932
 Conc: 1.54 ng/ml

Instrument :
 ECD_O
 ClientSampleId :



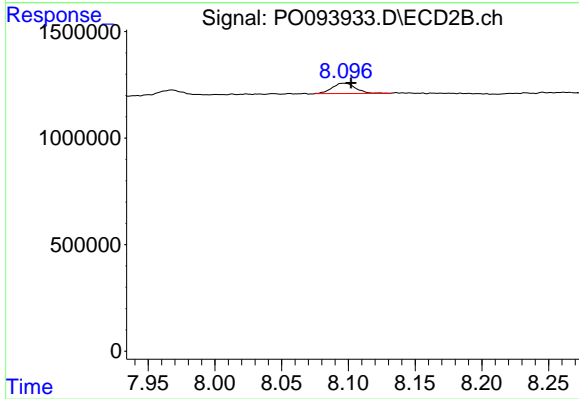
#43 AR-1268-3

R.T.: 0.000 min
 Exp R.T. : 7.812 min
 Response: 0
 Conc: N.D.



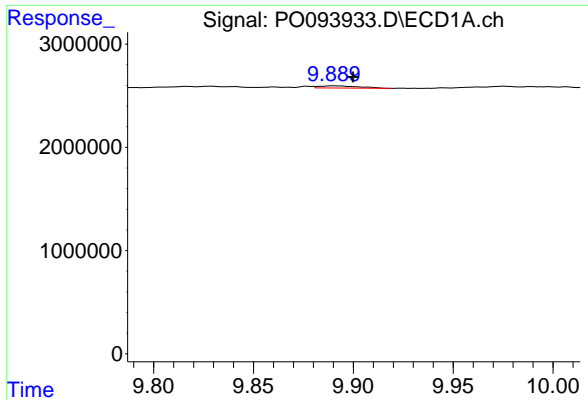
#44 AR-1268-4

R.T.: 9.470 min
 Delta R.T.: -0.004 min
 Response: 2456670
 Conc: 25.41 ng/ml



#44 AR-1268-4

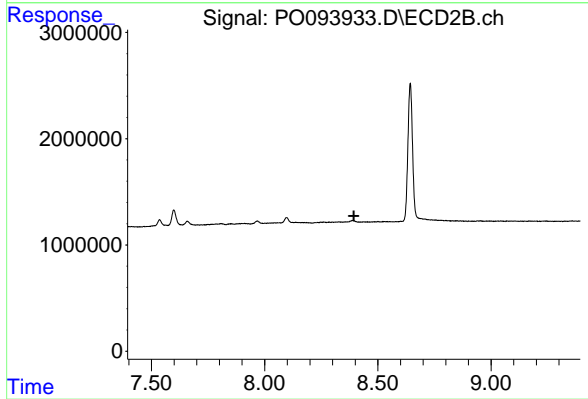
R.T.: 8.097 min
 Delta R.T.: -0.005 min
 Response: 588412
 Conc: 14.86 ng/ml



#45 AR-1268-5

R.T.: 9.890 min
Delta R.T.: -0.010 min
Response: 289327
Conc: 0.34 ng/ml

Instrument :
ECD_O
ClientSampleId :



#45 AR-1268-5

R.T.: 0.000 min
Exp R.T. : 8.394 min
Response: 0
Conc: N.D.