

Data Path : Z:\pestpcbsrv\HPCHEM1\ECD_O\Data\P0040723\
 Data File : P0093937.D
 Signal(s) : Signal #1: ECD1A.ch Signal #2: ECD2B.ch
 Acq On : 07 Apr 2023 18:00
 Operator : YP/AJ
 Sample : 02213-01
 Misc : AR1248 LOD 25 PPB
 ALS Vial : 12 Sample Multiplier: 1

Instrument :
 ECD_O
 ClientSampleId :

Integration File signal 1: autoint1.e
 Integration File signal 2: autoint2.e
 Quant Time: Apr 07 22:47:51 2023
 Quant Method : Z:\pestpcbsrv\HPCHEM1\ECD_O\methods\P0040323.M
 Quant Title : GC EXTRACTABLES
 QLast Update : Tue Apr 04 06:20:55 2023
 Response via : Initial Calibration
 Integrator: ChemStation

Volume Inj. : 2 µl
 Signal #1 Phase : ZB-MR1 Signal #2 Phase: ZB-MR2
 Signal #1 Info : 30Mx0.32mmx 0.50µ Signal #2 Info : 30M x 0.32mm x 0.25µm

Compound	RT#1	RT#2	Resp#1	Resp#2	ng/ml	ng/ml
System Monitoring Compounds						
1) SA Tetrachlo...	4.420	3.624	65415777	24265815	17.499	19.056
2) SA Decachlor...	10.243	8.643	49672569	22465637	22.206	22.470
Target Compounds						
3) L1 AR-1016-1	5.595	4.707	2809434	592789	27.472	16.706 #
4) L1 AR-1016-2	5.617	4.724	2917395	554359	18.718	10.264 #
5) L1 AR-1016-3	5.680	4.902	1797963	383558	18.229	13.533 #
6) L1 AR-1016-4	5.778	4.944	924571	996448	12.574	37.736 #
7) L1 AR-1016-5	6.077	5.156	3266467	1365317	38.582	41.725
8) L2 AR-1221-1	4.621	0.000	213533	0	4.630	N.D. #
9) L2 AR-1221-2	4.726	3.922	885682	367804	25.802	31.163
10) L2 AR-1221-3	4.792	0.000	222695	0	2.126	N.D. #
11) L3 AR-1232-1	4.792	0.000	222695	0	2.552	N.D. #
12) L3 AR-1232-2	5.326	4.724	741610	554359	17.341	20.940
13) L3 AR-1232-3	5.617	4.902	2917395	383558	39.716	29.081 #
14) L3 AR-1232-4	5.778	4.985	924571	1108477	26.860	78.001 #
15) L3 AR-1232-5	5.871	5.156	2831272	1365317	89.139	88.378
16) L4 AR-1242-1	5.595	4.707	2809434	592789	32.187	19.264 #
17) L4 AR-1242-2	5.617	4.724	2917395	554359	21.941	12.053 #
18) L4 AR-1242-3	5.680	4.902	1797963	383558	21.181	15.827 #
19) L4 AR-1242-4	5.778	4.985	924571	1108477	14.798	39.485 #
20) L4 AR-1242-5	6.522	5.508	3504461	1449726	52.049	50.848
21) L5 AR-1248-1	5.595	4.707	2809434	592789	41.756	24.853 #
22) L5 AR-1248-2	5.871	4.944	2831272	996448	25.883	25.016
23) L5 AR-1248-3	6.077	4.985	3266467	1108477	27.058	26.557
24) L5 AR-1248-4	6.484	5.156	3266602	1365317	30.416	29.034
25) L5 AR-1248-5	6.522	5.549	3504461	838377	30.205	22.456 #
26) L6 AR-1254-1	6.456	5.508	2378609	1449726	17.538	21.209
27) L6 AR-1254-2	6.680	5.657	2889937	486477	14.784	7.987 #
28) L6 AR-1254-3	7.046	6.061	2181304	806406	11.807	8.853 #
29) L6 AR-1254-4	7.335	6.291	982389	392761	9.687	9.221
30) L6 AR-1254-5	7.763	0.000	1348103	0	9.941	N.D. #
31) L7 AR-1260-1	7.212	6.204	61367	411657	0.420	6.313 #
32) L7 AR-1260-2	7.471	0.000	135873	0	0.849	N.D. #
33) L7 AR-1260-3	7.841	6.605f	280502	405068	2.113	5.582 #
34) L7 AR-1260-4	8.056	0.000	40360	0	0.293	N.D. #
35) L7 AR-1260-5	8.425	0.000	435431	0	1.999	N.D. #
36) L8 AR-1262-1	7.841	0.000	280502	0	1.642	N.D. #
37) L8 AR-1262-2	8.425	0.000	435431	0	1.873	N.D. #
38) L8 AR-1262-3	8.711	0.000	232191	0	1.417	N.D. #
39) L8 AR-1262-4	8.814	7.659f	172920	570733	1.726	6.882 #
40) L8 AR-1262-5	9.468	0.000	249361	0	3.098	N.D. #
41) L9 AR-1268-1	8.711	0.000	232191	0	0.690	N.D. #

Data Path : Z:\pestpcbsrv\HPCHEM1\ECD_0\Data\P0040723\
 Data File : P0093937.D
 Signal(s) : Signal #1: ECD1A.ch Signal #2: ECD2B.ch
 Acq On : 07 Apr 2023 18:00
 Operator : YP/AJ
 Sample : 02213-01
 Misc : AR1248 LOD 25 PPB
 ALS Vial : 12 Sample Multiplier: 1

Instrument :
 ECD_0
 ClientSampleId :

Integration File signal 1: autoint1.e
 Integration File signal 2: autoint2.e
 Quant Time: Apr 07 22:47:51 2023
 Quant Method : Z:\pestpcbsrv\HPCHEM1\ECD_0\methods\P0040323.M
 Quant Title : GC EXTRACTABLES
 QLast Update : Tue Apr 04 06:20:55 2023
 Response via : Initial Calibration
 Integrator: ChemStation

Volume Inj. : 2 µl
 Signal #1 Phase : ZB-MR1 Signal #2 Phase: ZB-MR2
 Signal #1 Info : 30Mx0.32mmx 0.50µ Signal #2 Info : 30M x 0.32mm x 0.25µm

	Compound	RT#1	RT#2	Resp#1	Resp#2	ng/ml	ng/ml
42)	L9 AR-1268-2	8.814	7.659f	172920	570733	0.537	4.201 #
43)	L9 AR-1268-3	9.038	0.000	181468	0	0.640	N.D. #
44)	L9 AR-1268-4	9.468	0.000	249361	0	2.579	N.D. #
45)	L9 AR-1268-5	9.889	0.000	186604	0	0.222	N.D. #

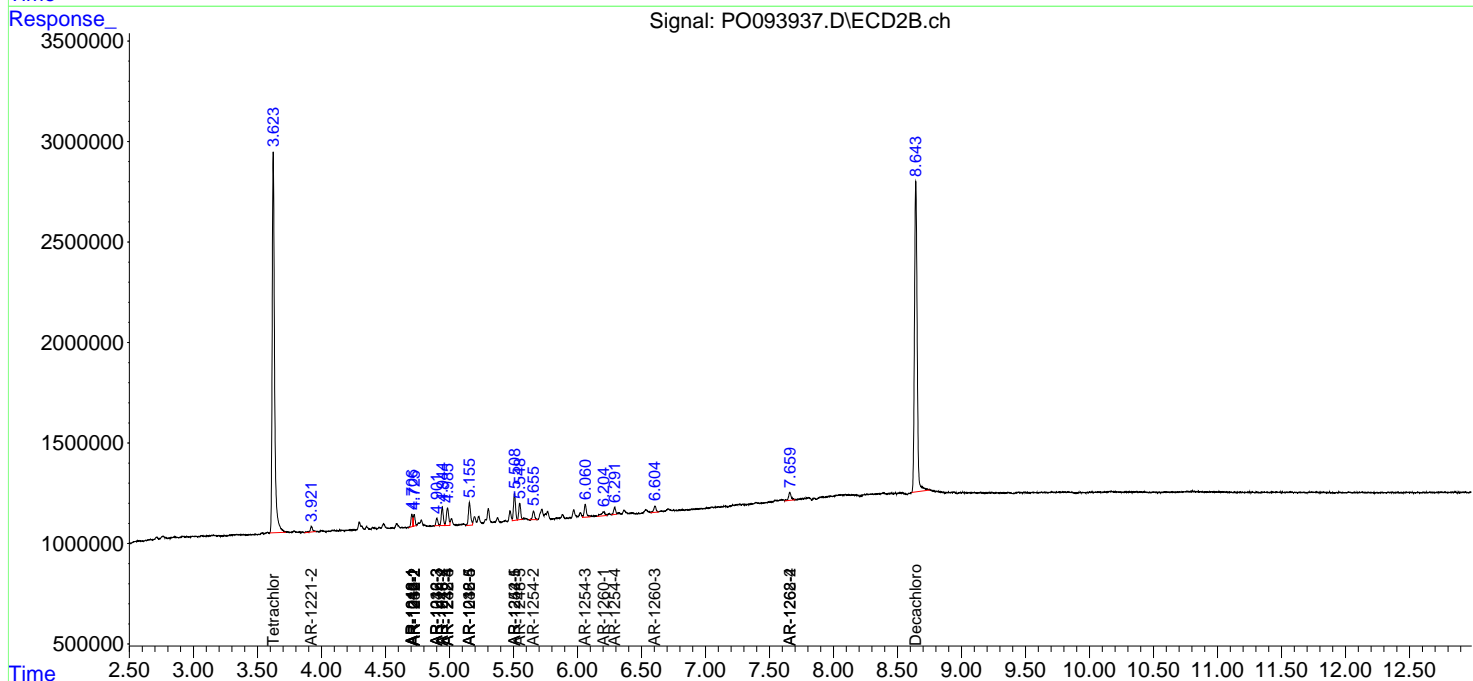
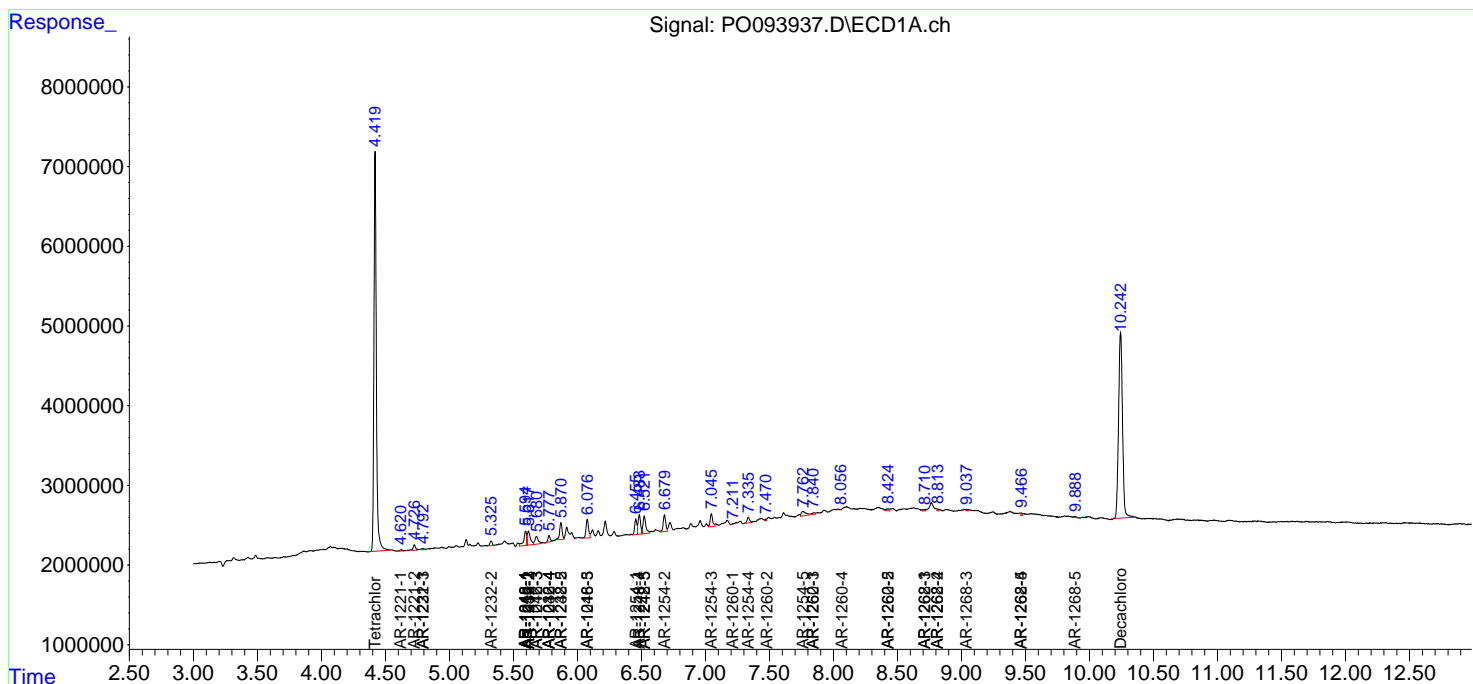
(f)=RT Delta > 1/2 Window (#)=Amounts differ by > 25% (m)=manual int.

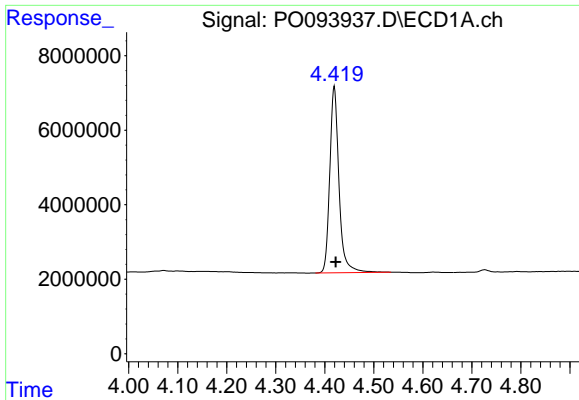
Data Path : Z:\pestpcbsrv\HPCHEM1\ECD_O\Data\PO040723\
 Data File : PO093937.D
 Signal(s) : Signal #1: ECD1A.ch Signal #2: ECD2B.ch
 Acq On : 07 Apr 2023 18:00
 Operator : YP/AJ
 Sample : 02213-01
 Misc : AR1248 LOD 25 PPB
 ALS Vial : 12 Sample Multiplier: 1

Instrument :
 ECD_O
 ClientSampleId :

Integration File signal 1: autoint1.e
 Integration File signal 2: autoint2.e
 Quant Time: Apr 07 22:47:51 2023
 Quant Method : Z:\pestpcbsrv\HPCHEM1\ECD_O\methods\PO040323.M
 Quant Title : GC EXTRACTABLES
 QLast Update : Tue Apr 04 06:20:55 2023
 Response via : Initial Calibration
 Integrator: ChemStation

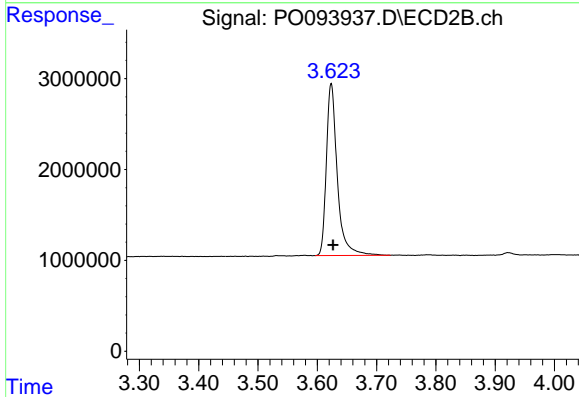
Volume Inj. : 2 µl
 Signal #1 Phase : ZB-MR1 Signal #2 Phase: ZB-MR2
 Signal #1 Info : 30Mx0.32mmx 0.50µ Signal #2 Info : 30M x 0.32mm x 0.25µm



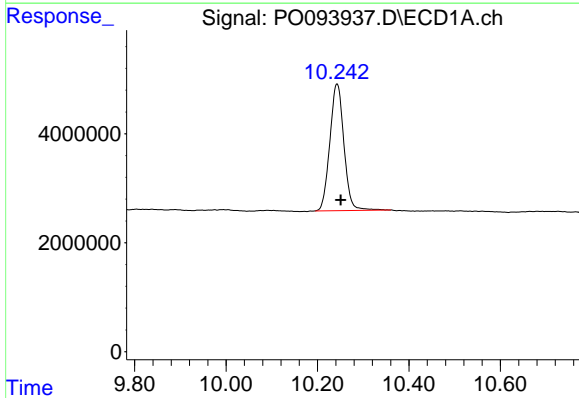


#1 Tetrachloro-m-xylene
 R.T.: 4.420 min
 Delta R.T.: -0.002 min
 Response: 65415777
 Conc: 17.50 ng/ml

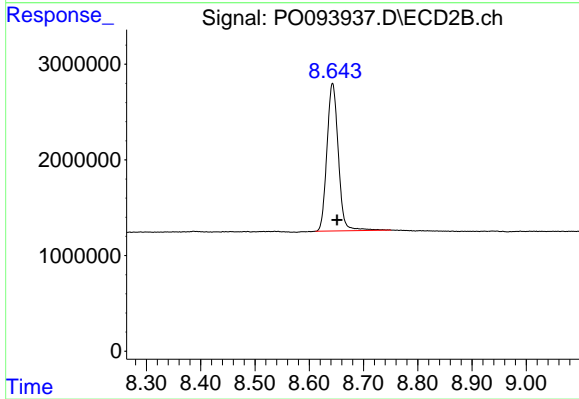
Instrument :
 ECD_O
 ClientSampleId :



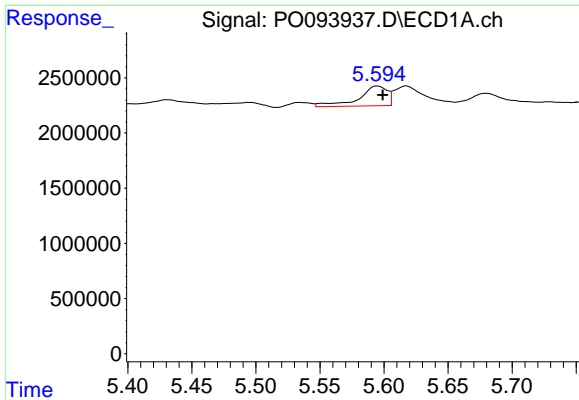
#1 Tetrachloro-m-xylene
 R.T.: 3.624 min
 Delta R.T.: -0.003 min
 Response: 24265815
 Conc: 19.06 ng/ml



#2 Decachlorobiphenyl
 R.T.: 10.243 min
 Delta R.T.: -0.008 min
 Response: 49672569
 Conc: 22.21 ng/ml



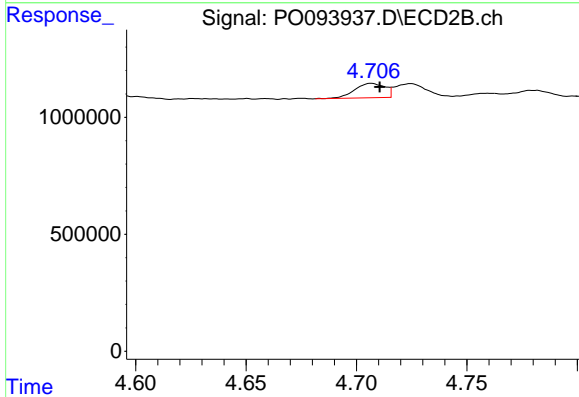
#2 Decachlorobiphenyl
 R.T.: 8.643 min
 Delta R.T.: -0.008 min
 Response: 22465637
 Conc: 22.47 ng/ml



#3 AR-1016-1

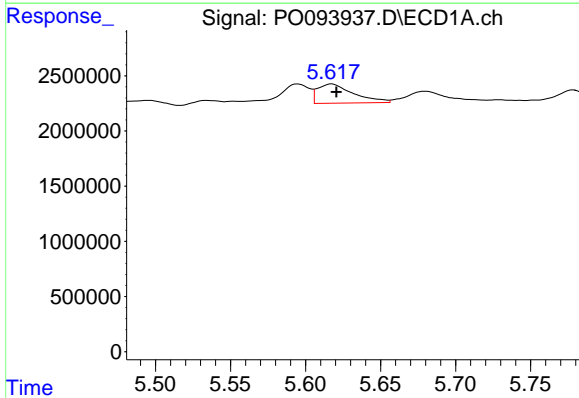
R.T.: 5.595 min
 Delta R.T.: -0.004 min
 Response: 2809434
 Conc: 27.47 ng/ml

Instrument :
 ECD_O
 ClientSampleId :



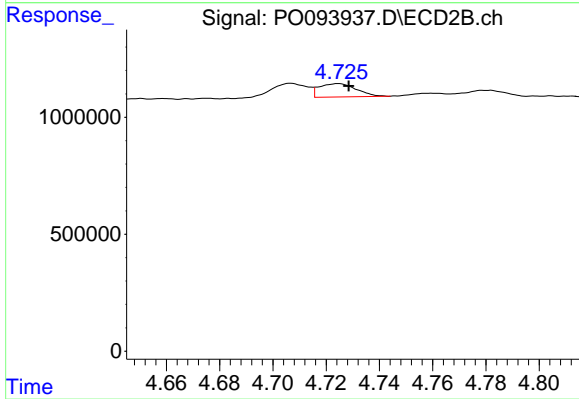
#3 AR-1016-1

R.T.: 4.707 min
 Delta R.T.: -0.004 min
 Response: 592789
 Conc: 16.71 ng/ml



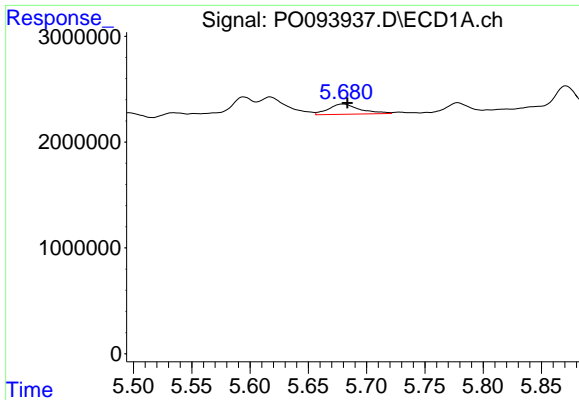
#4 AR-1016-2

R.T.: 5.617 min
 Delta R.T.: -0.003 min
 Response: 2917395
 Conc: 18.72 ng/ml



#4 AR-1016-2

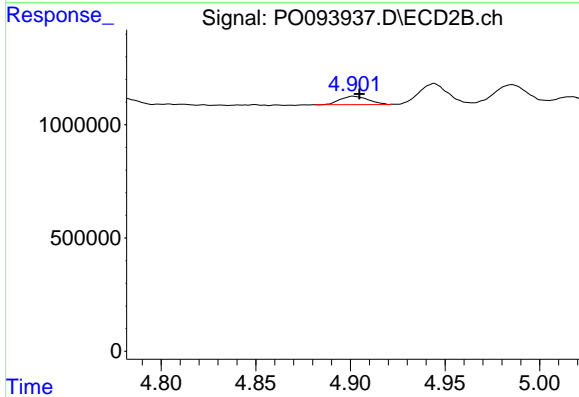
R.T.: 4.724 min
 Delta R.T.: -0.004 min
 Response: 554359
 Conc: 10.26 ng/ml



#5 AR-1016-3

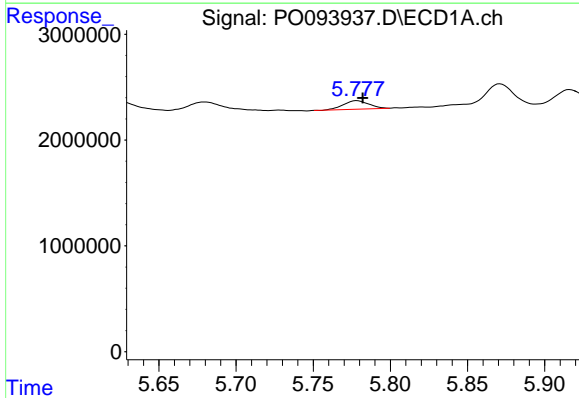
R.T.: 5.680 min
 Delta R.T.: -0.003 min
 Response: 1797963
 Conc: 18.23 ng/ml

Instrument :
 ECD_O
 ClientSampleId :



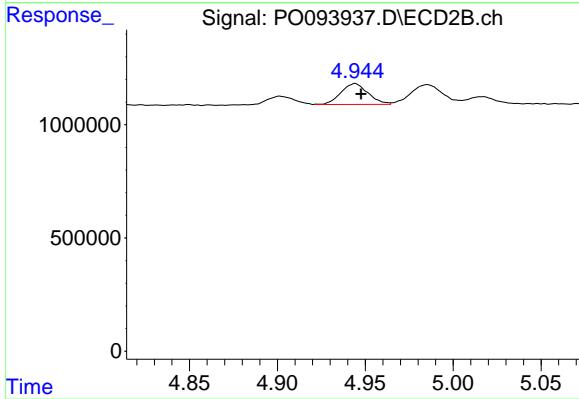
#5 AR-1016-3

R.T.: 4.902 min
 Delta R.T.: -0.003 min
 Response: 383558
 Conc: 13.53 ng/ml



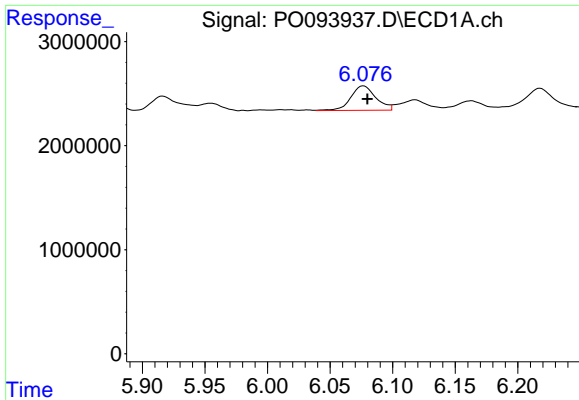
#6 AR-1016-4

R.T.: 5.778 min
 Delta R.T.: -0.004 min
 Response: 924571
 Conc: 12.57 ng/ml



#6 AR-1016-4

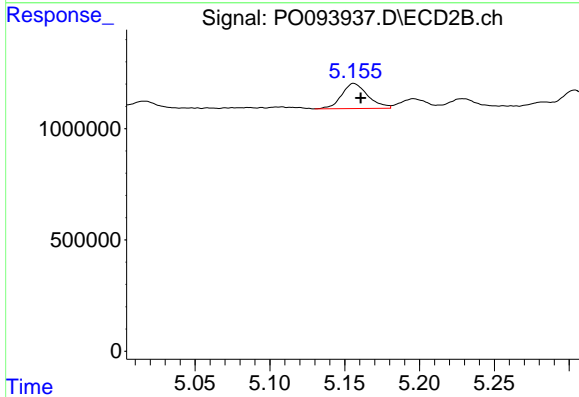
R.T.: 4.944 min
 Delta R.T.: -0.004 min
 Response: 996448
 Conc: 37.74 ng/ml



#7 AR-1016-5

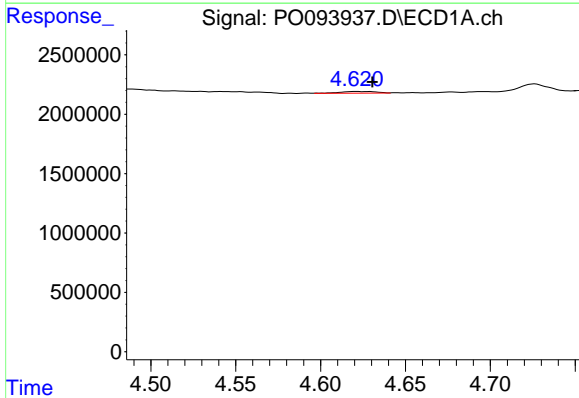
R.T.: 6.077 min
 Delta R.T.: -0.003 min
 Response: 3266467
 Conc: 38.58 ng/ml

Instrument :
 ECD_O
 ClientSampleId :



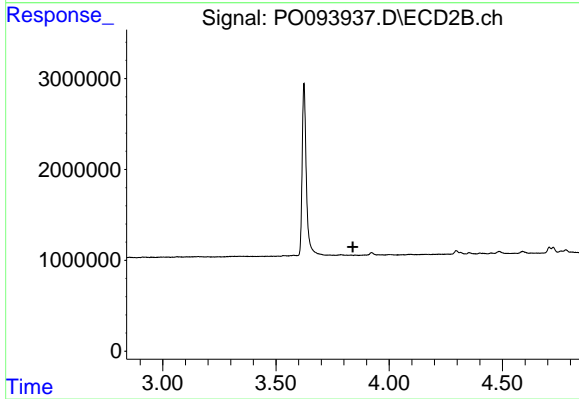
#7 AR-1016-5

R.T.: 5.156 min
 Delta R.T.: -0.004 min
 Response: 1365317
 Conc: 41.73 ng/ml



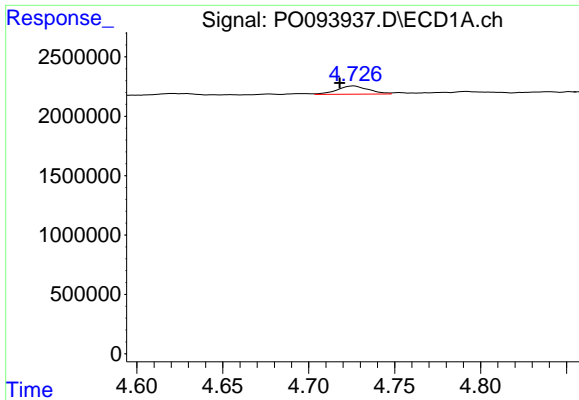
#8 AR-1221-1

R.T.: 4.621 min
 Delta R.T.: -0.010 min
 Response: 213533
 Conc: 4.63 ng/ml



#8 AR-1221-1

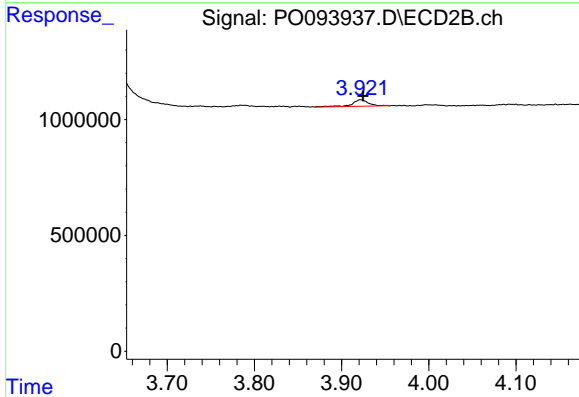
R.T.: 0.000 min
 Exp R.T. : 3.840 min
 Response: 0
 Conc: N.D.



#9 AR-1221-2

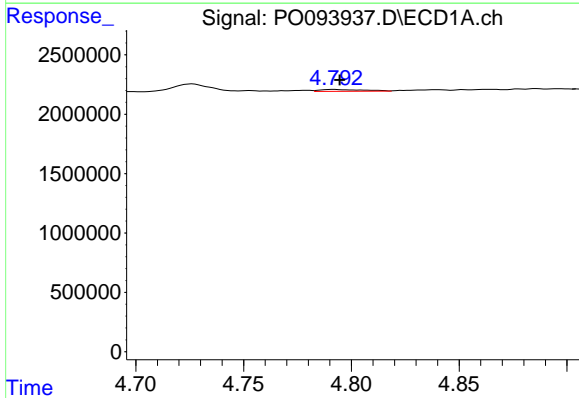
R.T.: 4.726 min
 Delta R.T.: 0.008 min
 Response: 885682
 Conc: 25.80 ng/ml

Instrument :
 ECD_O
 ClientSampleId :



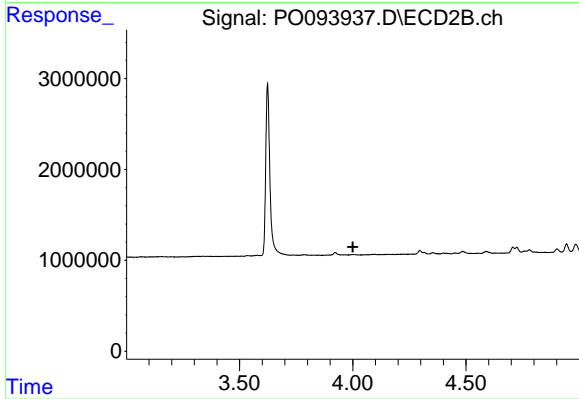
#9 AR-1221-2

R.T.: 3.922 min
 Delta R.T.: -0.003 min
 Response: 367804
 Conc: 31.16 ng/ml



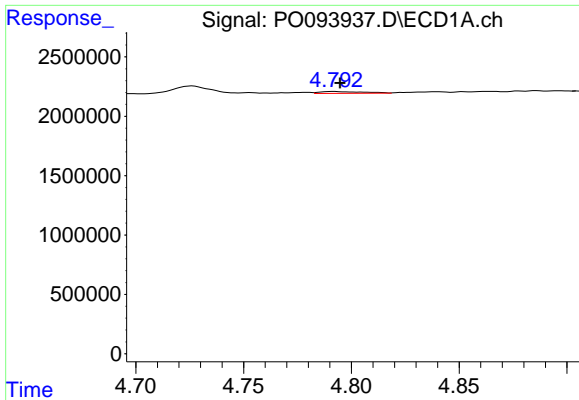
#10 AR-1221-3

R.T.: 4.792 min
 Delta R.T.: -0.003 min
 Response: 222695
 Conc: 2.13 ng/ml



#10 AR-1221-3

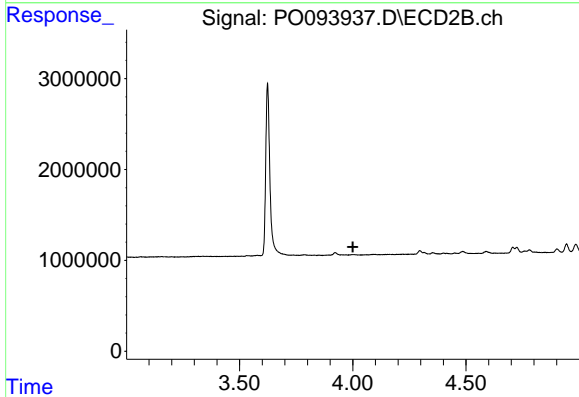
R.T.: 0.000 min
 Exp R.T. : 4.000 min
 Response: 0
 Conc: N.D.



#11 AR-1232-1

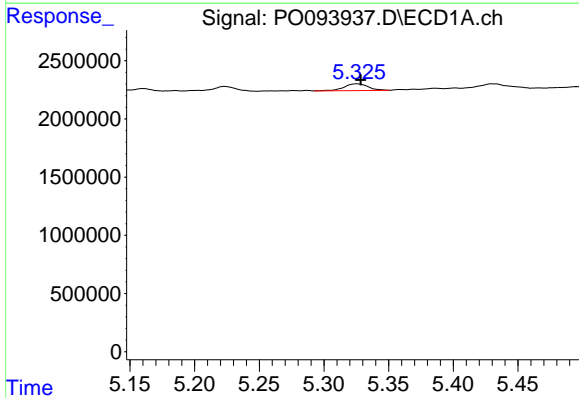
R.T.: 4.792 min
 Delta R.T.: -0.003 min
 Response: 222695
 Conc: 2.55 ng/ml

Instrument :
 ECD_O
 ClientSampleId :



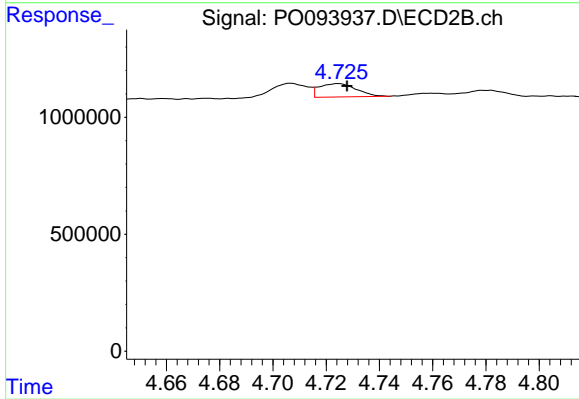
#11 AR-1232-1

R.T.: 0.000 min
 Exp R.T. : 4.000 min
 Response: 0
 Conc: N.D.



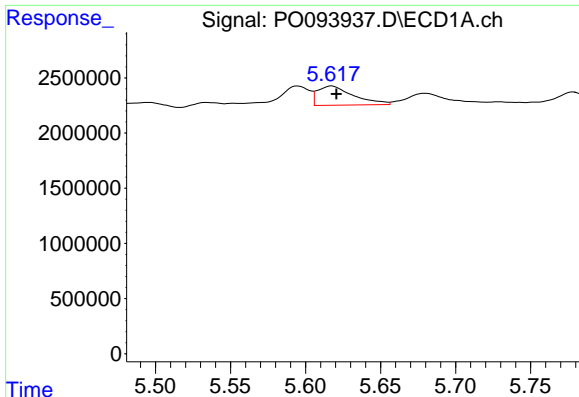
#12 AR-1232-2

R.T.: 5.326 min
 Delta R.T.: -0.003 min
 Response: 741610
 Conc: 17.34 ng/ml



#12 AR-1232-2

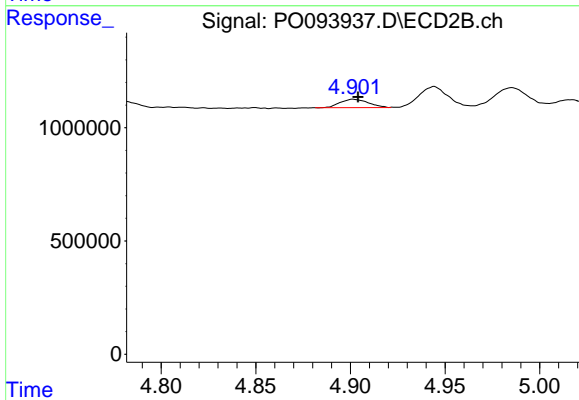
R.T.: 4.724 min
 Delta R.T.: -0.003 min
 Response: 554359
 Conc: 20.94 ng/ml



#13 AR-1232-3

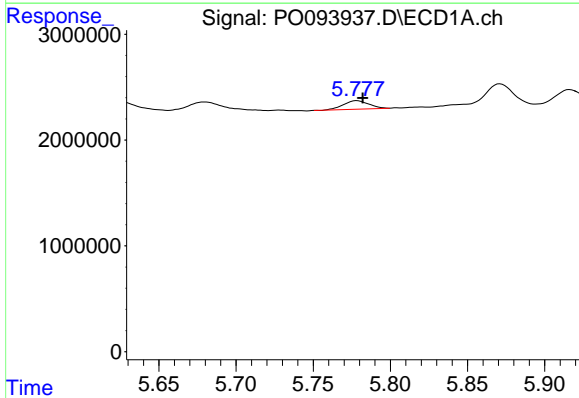
R.T.: 5.617 min
 Delta R.T.: -0.003 min
 Response: 2917395
 Conc: 39.72 ng/ml

Instrument :
 ECD_O
 ClientSampleId :



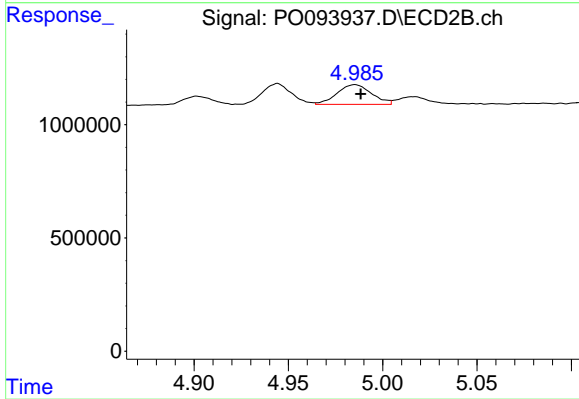
#13 AR-1232-3

R.T.: 4.902 min
 Delta R.T.: -0.002 min
 Response: 383558
 Conc: 29.08 ng/ml



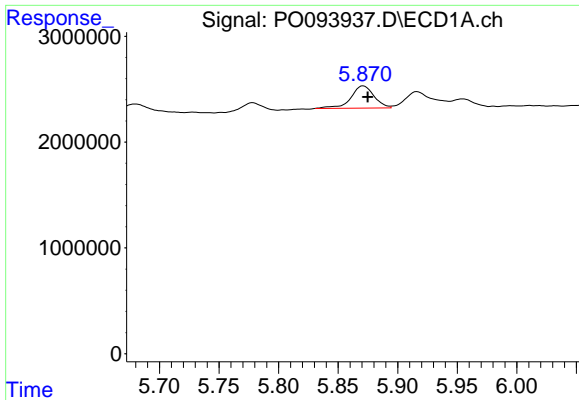
#14 AR-1232-4

R.T.: 5.778 min
 Delta R.T.: -0.004 min
 Response: 924571
 Conc: 26.86 ng/ml



#14 AR-1232-4

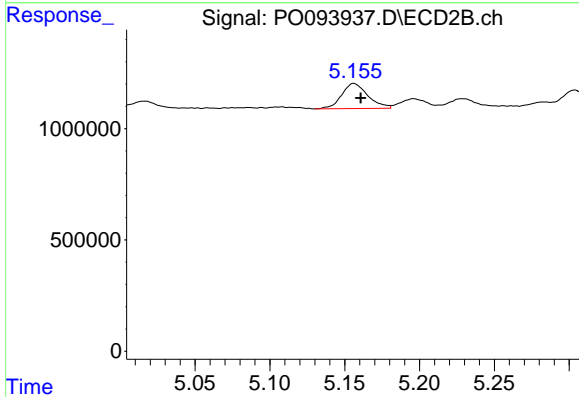
R.T.: 4.985 min
 Delta R.T.: -0.003 min
 Response: 1108477
 Conc: 78.00 ng/ml



#15 AR-1232-5

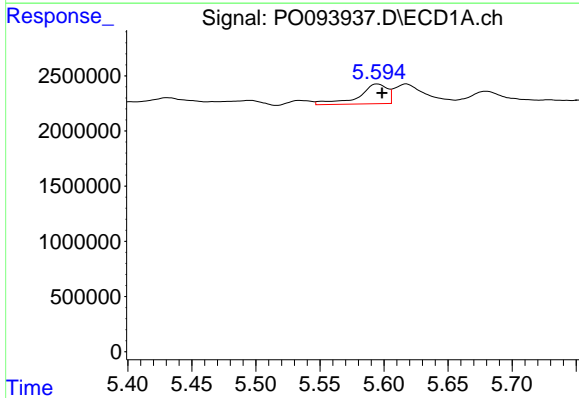
R.T.: 5.871 min
 Delta R.T.: -0.004 min
 Response: 2831272
 Conc: 89.14 ng/ml

Instrument :
 ECD_O
 ClientSampleId :



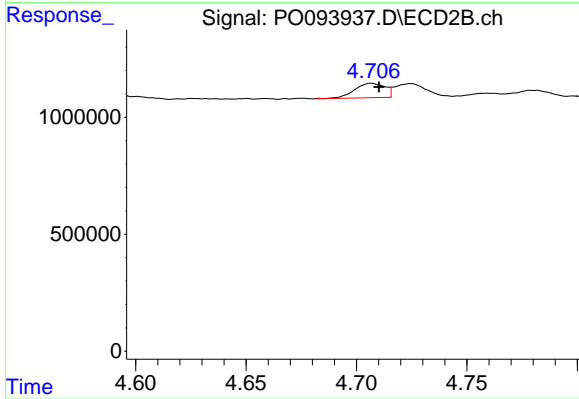
#15 AR-1232-5

R.T.: 5.156 min
 Delta R.T.: -0.005 min
 Response: 1365317
 Conc: 88.38 ng/ml



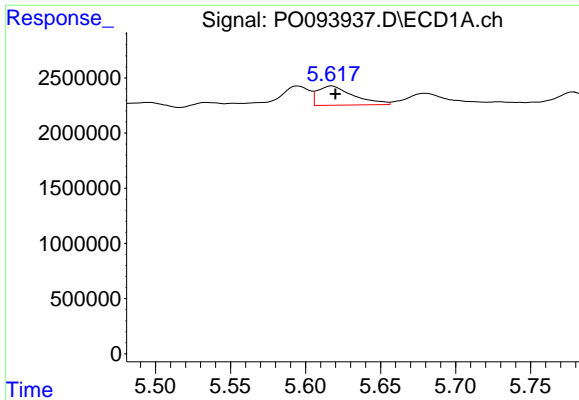
#16 AR-1242-1

R.T.: 5.595 min
 Delta R.T.: -0.004 min
 Response: 2809434
 Conc: 32.19 ng/ml



#16 AR-1242-1

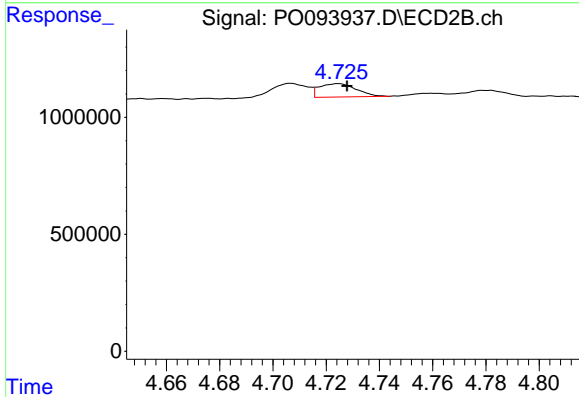
R.T.: 4.707 min
 Delta R.T.: -0.003 min
 Response: 592789
 Conc: 19.26 ng/ml



#17 AR-1242-2

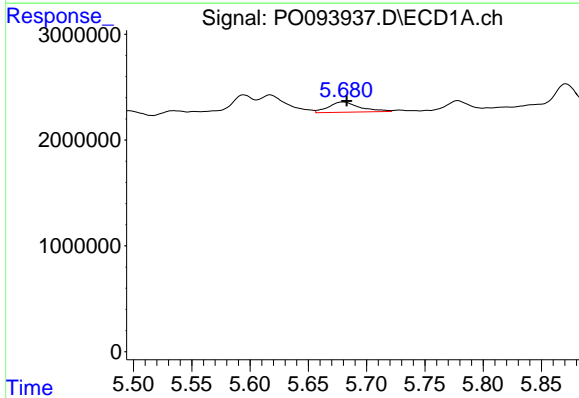
R.T.: 5.617 min
 Delta R.T.: -0.002 min
 Response: 2917395
 Conc: 21.94 ng/ml

Instrument :
 ECD_O
 ClientSampleId :



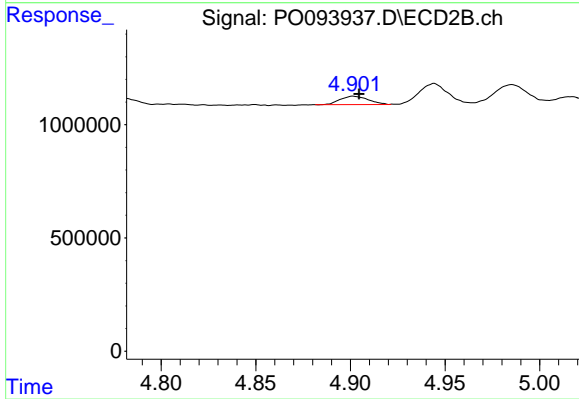
#17 AR-1242-2

R.T.: 4.724 min
 Delta R.T.: -0.003 min
 Response: 554359
 Conc: 12.05 ng/ml



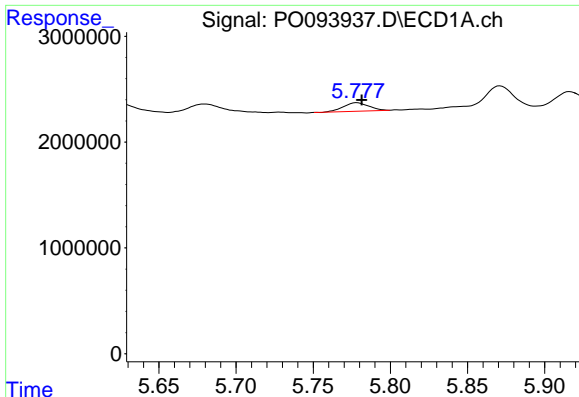
#18 AR-1242-3

R.T.: 5.680 min
 Delta R.T.: -0.003 min
 Response: 1797963
 Conc: 21.18 ng/ml



#18 AR-1242-3

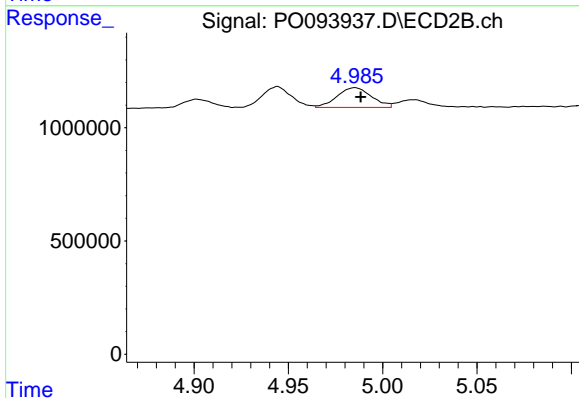
R.T.: 4.902 min
 Delta R.T.: -0.003 min
 Response: 383558
 Conc: 15.83 ng/ml



#19 AR-1242-4

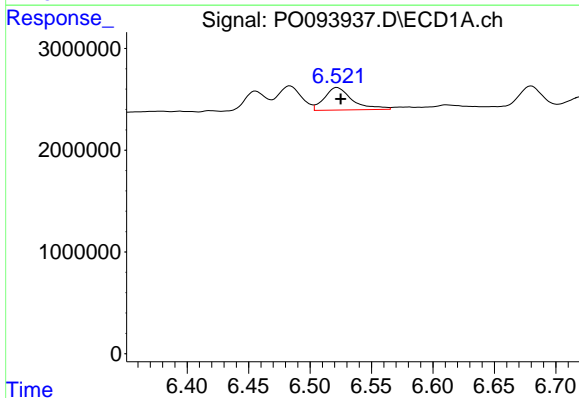
R.T.: 5.778 min
 Delta R.T.: -0.003 min
 Response: 924571
 Conc: 14.80 ng/ml

Instrument :
 ECD_O
 ClientSampleId :



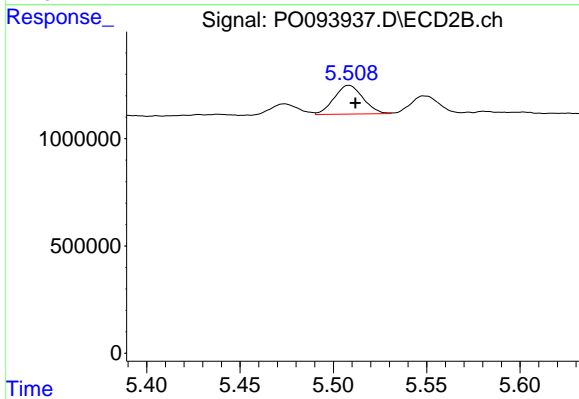
#19 AR-1242-4

R.T.: 4.985 min
 Delta R.T.: -0.003 min
 Response: 1108477
 Conc: 39.48 ng/ml



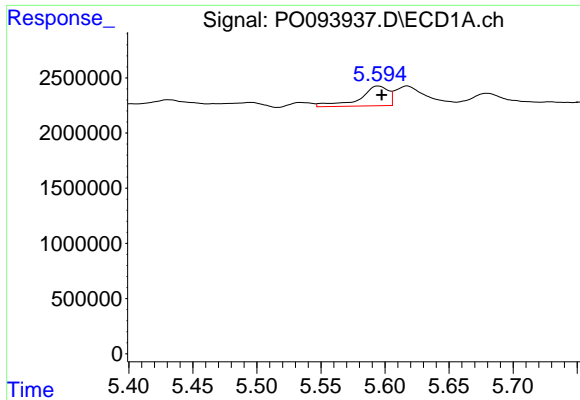
#20 AR-1242-5

R.T.: 6.522 min
 Delta R.T.: -0.003 min
 Response: 3504461
 Conc: 52.05 ng/ml



#20 AR-1242-5

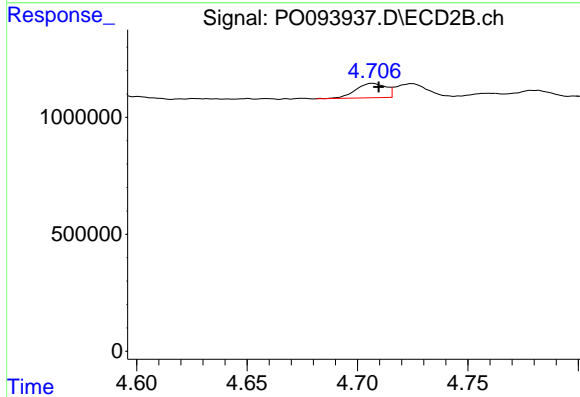
R.T.: 5.508 min
 Delta R.T.: -0.003 min
 Response: 1449726
 Conc: 50.85 ng/ml



#21 AR-1248-1

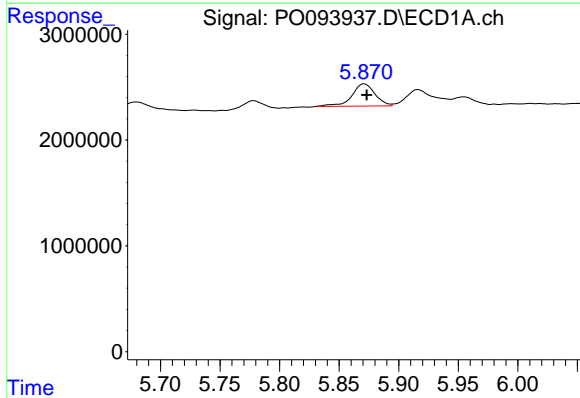
R.T.: 5.595 min
 Delta R.T.: -0.003 min
 Response: 2809434
 Conc: 41.76 ng/ml

Instrument :
 ECD_O
 ClientSampleId :



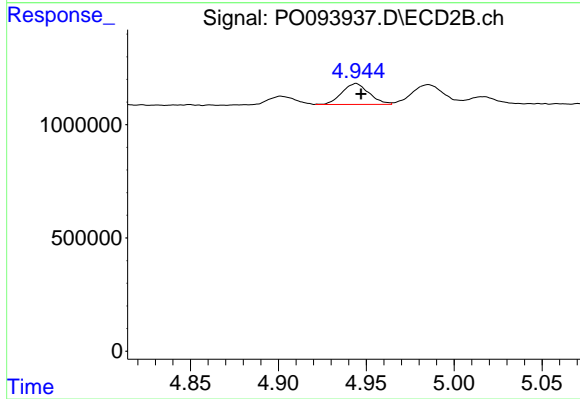
#21 AR-1248-1

R.T.: 4.707 min
 Delta R.T.: -0.003 min
 Response: 592789
 Conc: 24.85 ng/ml



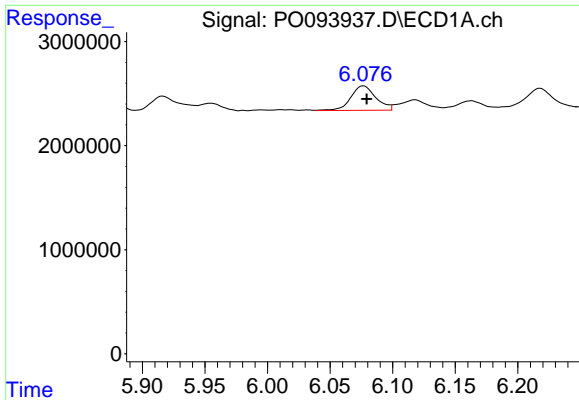
#22 AR-1248-2

R.T.: 5.871 min
 Delta R.T.: -0.002 min
 Response: 2831272
 Conc: 25.88 ng/ml



#22 AR-1248-2

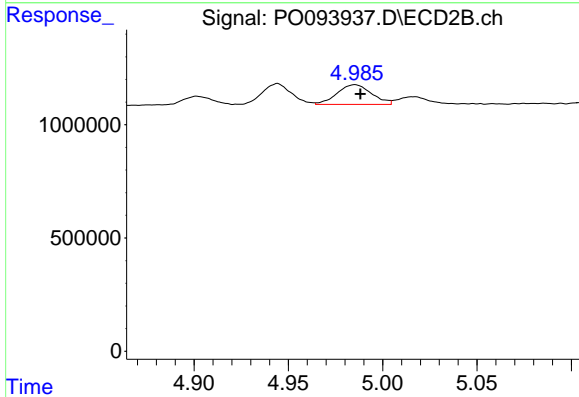
R.T.: 4.944 min
 Delta R.T.: -0.003 min
 Response: 996448
 Conc: 25.02 ng/ml



#23 AR-1248-3

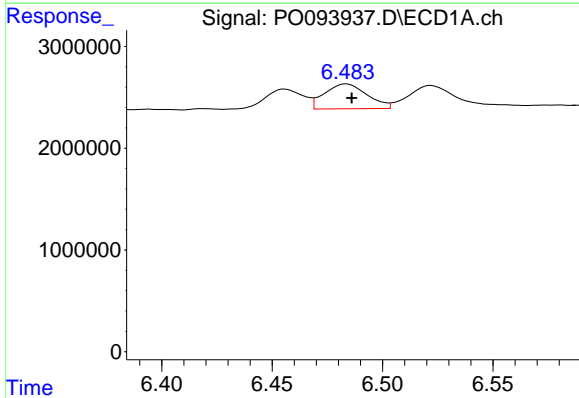
R.T.: 6.077 min
 Delta R.T.: -0.002 min
 Response: 3266467
 Conc: 27.06 ng/ml

Instrument :
 ECD_O
 ClientSampleId :



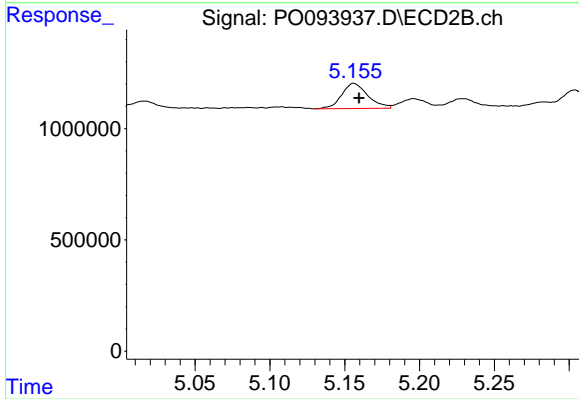
#23 AR-1248-3

R.T.: 4.985 min
 Delta R.T.: -0.003 min
 Response: 1108477
 Conc: 26.56 ng/ml



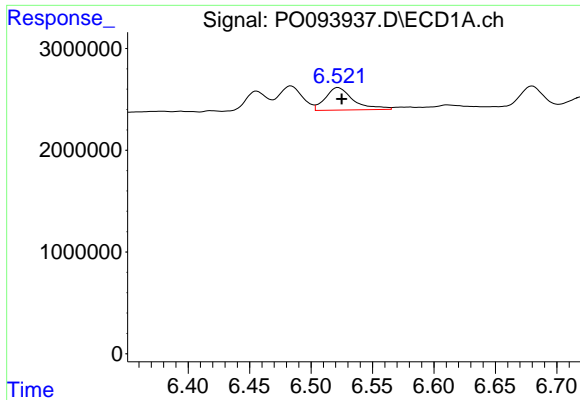
#24 AR-1248-4

R.T.: 6.484 min
 Delta R.T.: -0.002 min
 Response: 3266602
 Conc: 30.42 ng/ml



#24 AR-1248-4

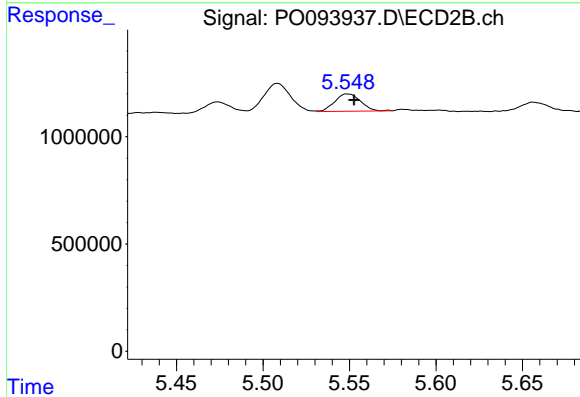
R.T.: 5.156 min
 Delta R.T.: -0.003 min
 Response: 1365317
 Conc: 29.03 ng/ml



#25 AR-1248-5

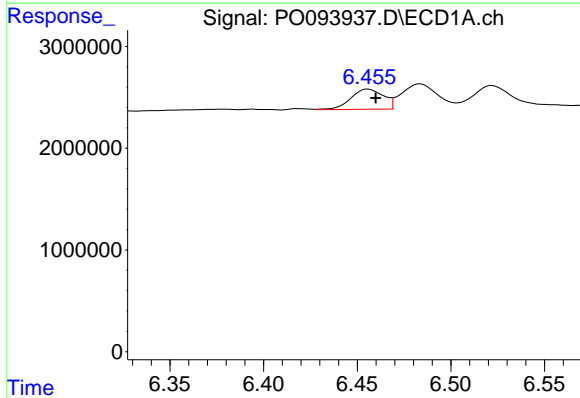
R.T.: 6.522 min
 Delta R.T.: -0.003 min
 Response: 3504461
 Conc: 30.20 ng/ml

Instrument :
 ECD_O
 ClientSampleId :



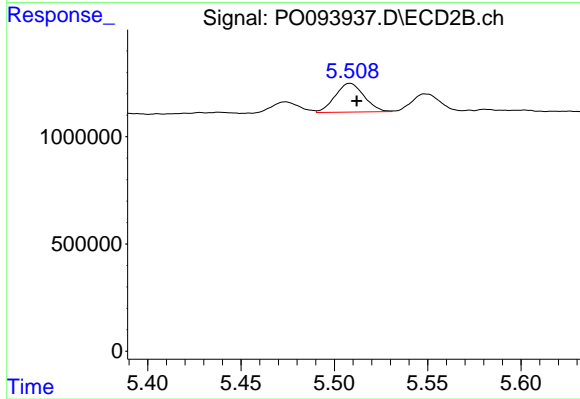
#25 AR-1248-5

R.T.: 5.549 min
 Delta R.T.: -0.004 min
 Response: 838377
 Conc: 22.46 ng/ml



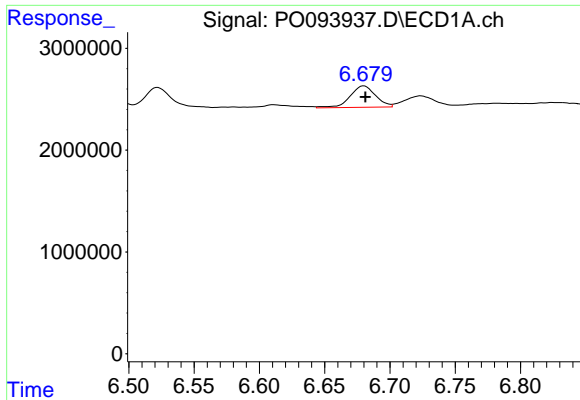
#26 AR-1254-1

R.T.: 6.456 min
 Delta R.T.: -0.004 min
 Response: 2378609
 Conc: 17.54 ng/ml



#26 AR-1254-1

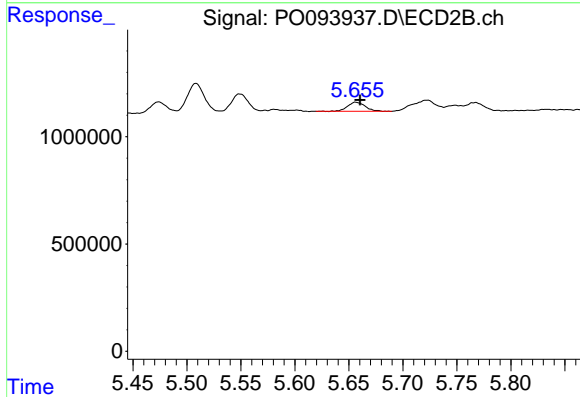
R.T.: 5.508 min
 Delta R.T.: -0.004 min
 Response: 1449726
 Conc: 21.21 ng/ml



#27 AR-1254-2

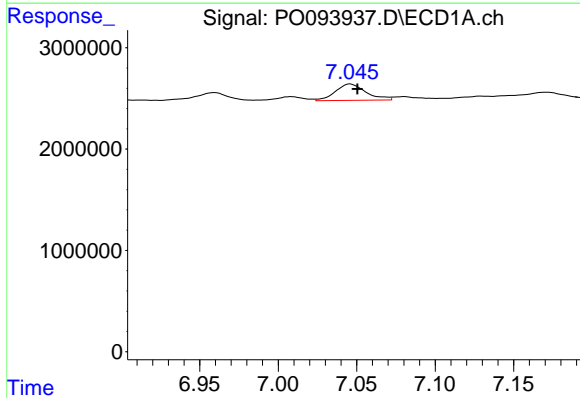
R.T.: 6.680 min
 Delta R.T.: -0.001 min
 Response: 2889937
 Conc: 14.78 ng/ml

Instrument :
 ECD_O
 ClientSampleId :



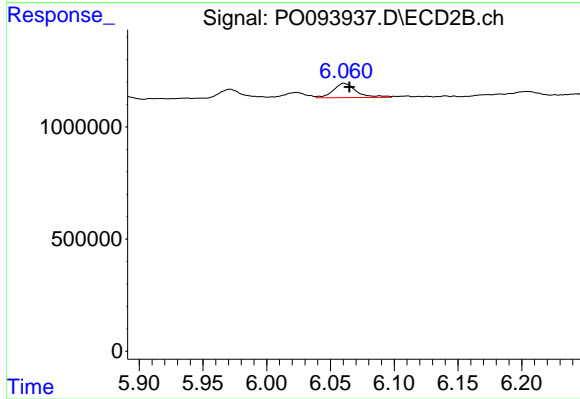
#27 AR-1254-2

R.T.: 5.657 min
 Delta R.T.: -0.004 min
 Response: 486477
 Conc: 7.99 ng/ml



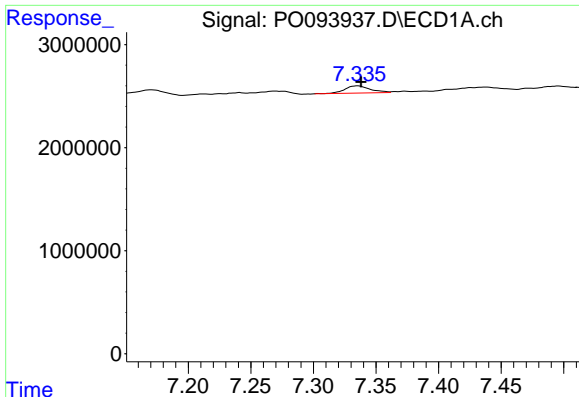
#28 AR-1254-3

R.T.: 7.046 min
 Delta R.T.: -0.004 min
 Response: 2181304
 Conc: 11.81 ng/ml



#28 AR-1254-3

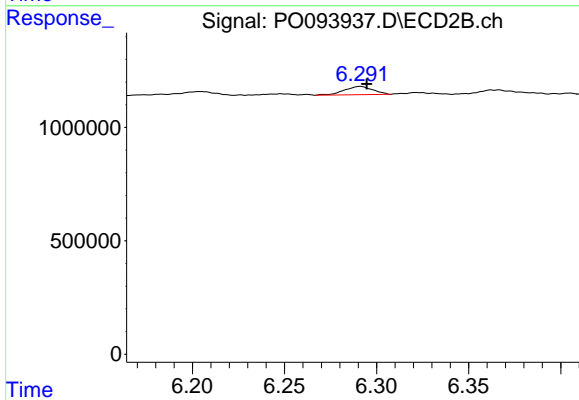
R.T.: 6.061 min
 Delta R.T.: -0.004 min
 Response: 806406
 Conc: 8.85 ng/ml



#29 AR-1254-4

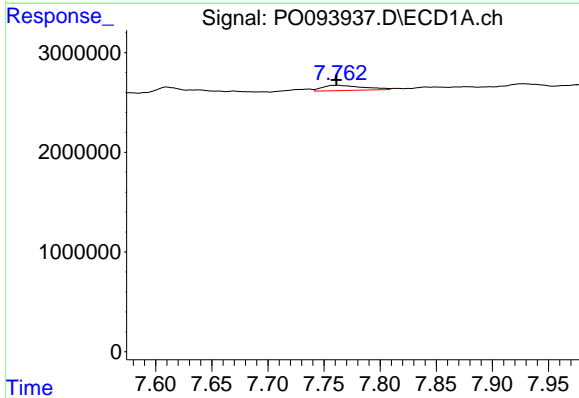
R.T.: 7.335 min
 Delta R.T.: -0.003 min
 Response: 982389
 Conc: 9.69 ng/ml

Instrument :
 ECD_O
 ClientSampleId :



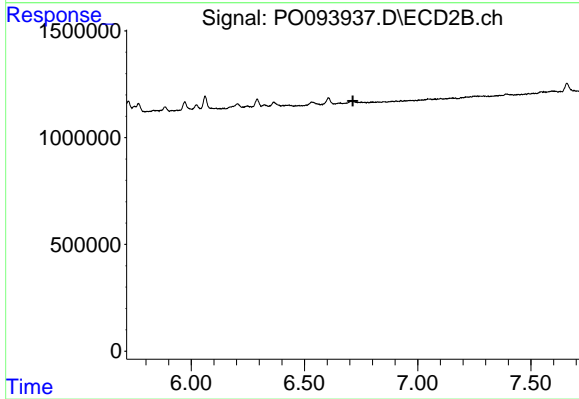
#29 AR-1254-4

R.T.: 6.291 min
 Delta R.T.: -0.004 min
 Response: 392761
 Conc: 9.22 ng/ml



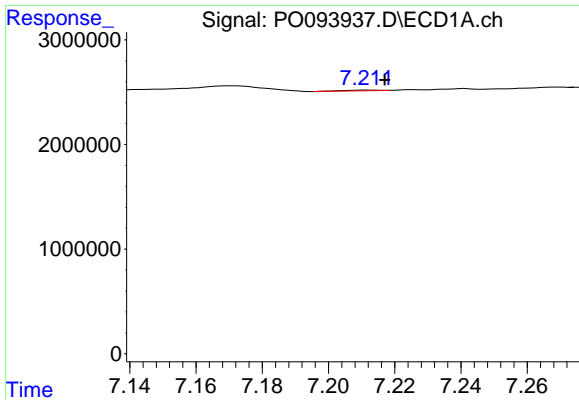
#30 AR-1254-5

R.T.: 7.763 min
 Delta R.T.: 0.001 min
 Response: 1348103
 Conc: 9.94 ng/ml



#30 AR-1254-5

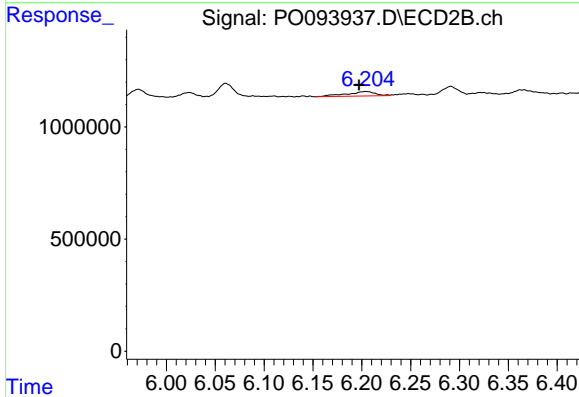
R.T.: 0.000 min
 Exp R.T. : 6.714 min
 Response: 0
 Conc: N.D.



#31 AR-1260-1

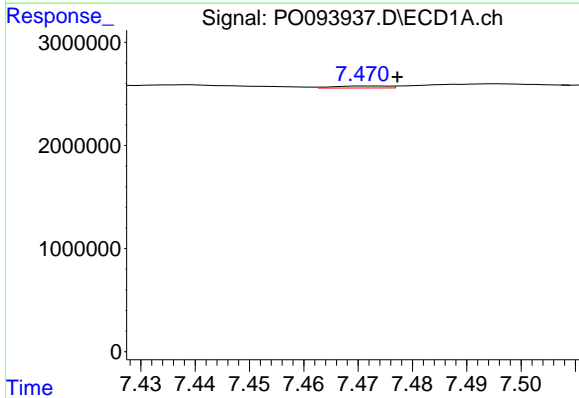
R.T.: 7.212 min
 Delta R.T.: -0.005 min
 Response: 61367
 Conc: 0.42 ng/ml

Instrument :
 ECD_O
 ClientSampleId :



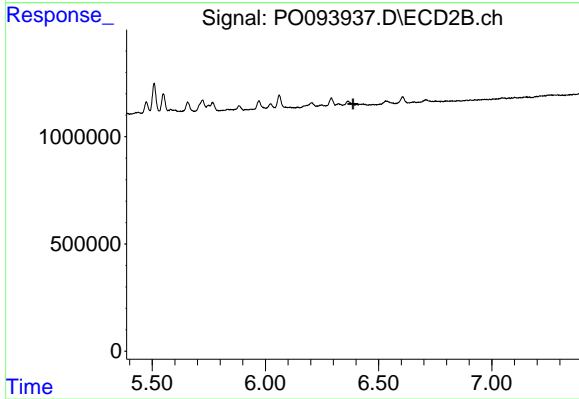
#31 AR-1260-1

R.T.: 6.204 min
 Delta R.T.: 0.007 min
 Response: 411657
 Conc: 6.31 ng/ml



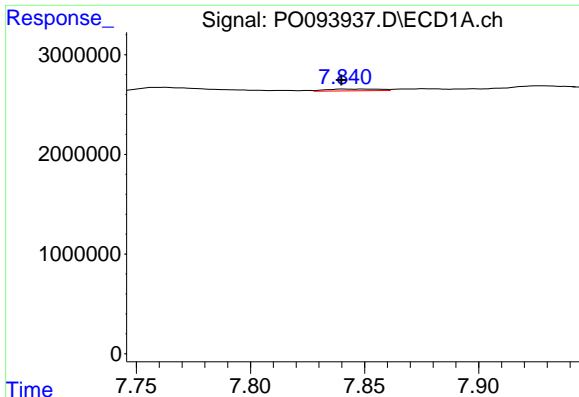
#32 AR-1260-2

R.T.: 7.471 min
 Delta R.T.: -0.006 min
 Response: 135873
 Conc: 0.85 ng/ml



#32 AR-1260-2

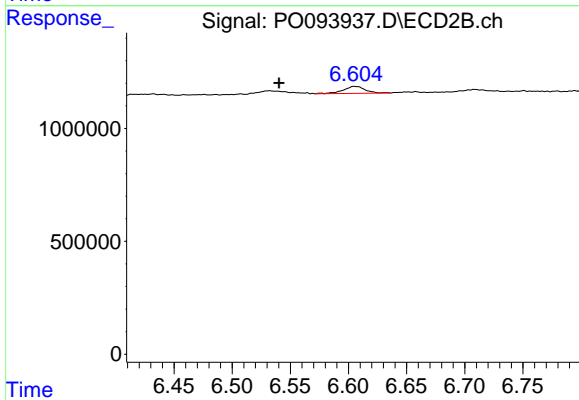
R.T.: 0.000 min
 Exp R.T. : 6.387 min
 Response: 0
 Conc: N.D.



#33 AR-1260-3

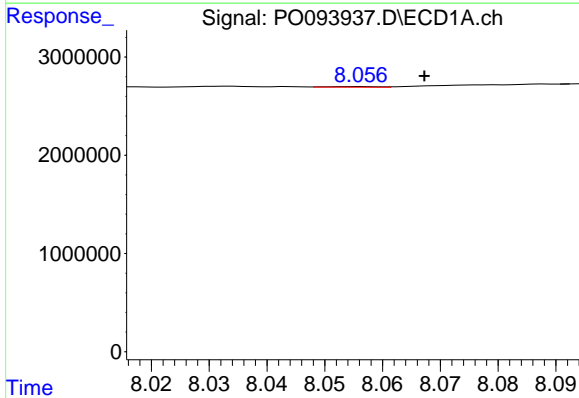
R.T.: 7.841 min
 Delta R.T.: 0.001 min
 Response: 280502
 Conc: 2.11 ng/ml

Instrument :
 ECD_O
 ClientSampleId :



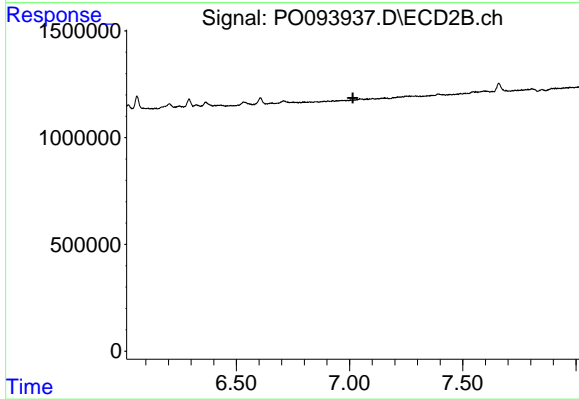
#33 AR-1260-3

R.T.: 6.605 min
 Delta R.T.: 0.065 min
 Response: 405068
 Conc: 5.58 ng/ml



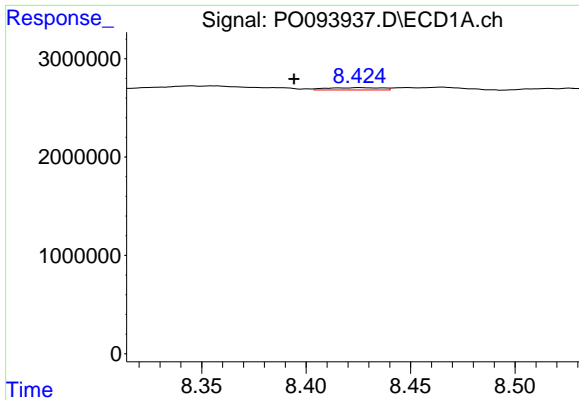
#34 AR-1260-4

R.T.: 8.056 min
 Delta R.T.: -0.011 min
 Response: 40360
 Conc: 0.29 ng/ml



#34 AR-1260-4

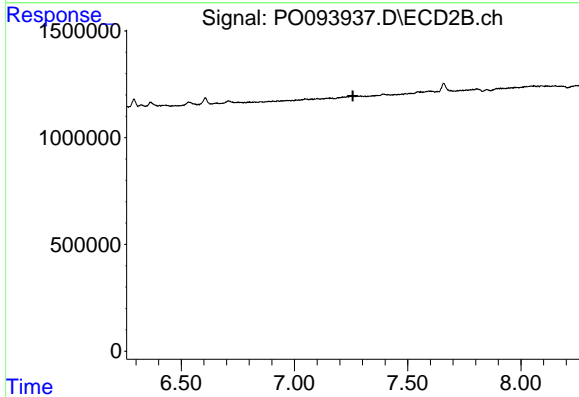
R.T.: 0.000 min
 Exp R.T. : 7.014 min
 Response: 0
 Conc: N.D.



#35 AR-1260-5

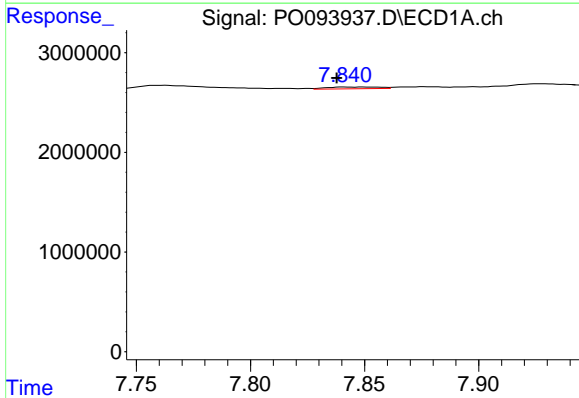
R.T.: 8.425 min
 Delta R.T.: 0.031 min
 Response: 435431
 Conc: 2.00 ng/ml

Instrument :
 ECD_O
 ClientSampleId :



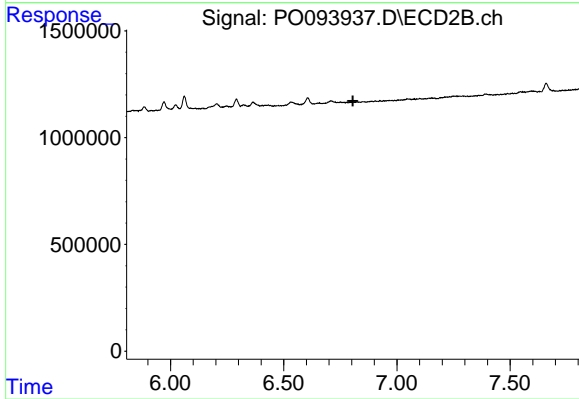
#35 AR-1260-5

R.T.: 0.000 min
 Exp R.T. : 7.258 min
 Response: 0
 Conc: N.D.



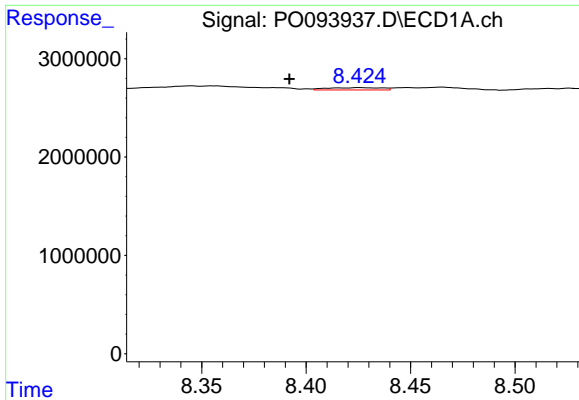
#36 AR-1262-1

R.T.: 7.841 min
 Delta R.T.: 0.003 min
 Response: 280502
 Conc: 1.64 ng/ml



#36 AR-1262-1

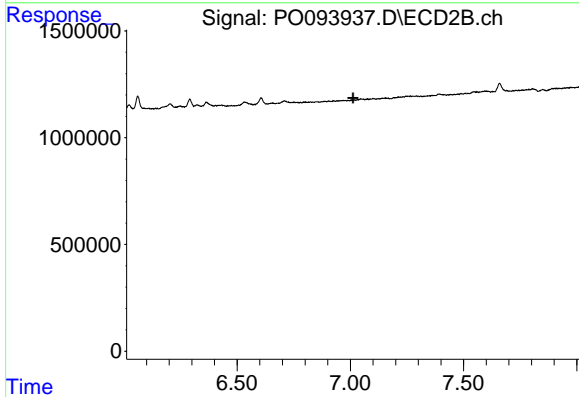
R.T.: 0.000 min
 Exp R.T. : 6.805 min
 Response: 0
 Conc: N.D.



#37 AR-1262-2

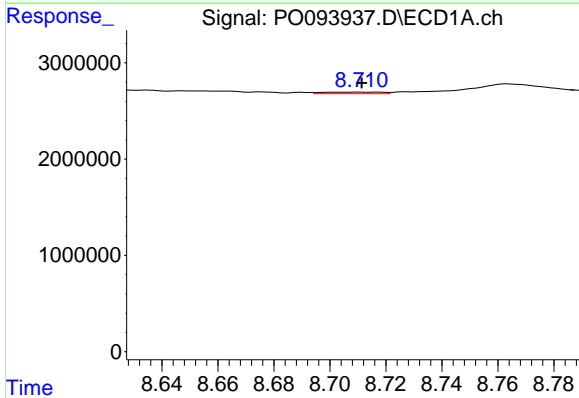
R.T.: 8.425 min
 Delta R.T.: 0.033 min
 Response: 435431
 Conc: 1.87 ng/ml

Instrument :
 ECD_O
 ClientSampleId :



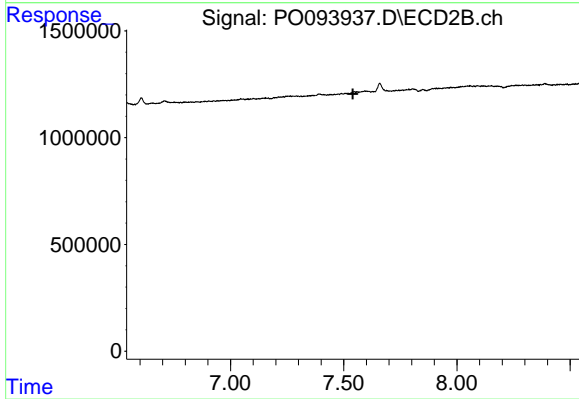
#37 AR-1262-2

R.T.: 0.000 min
 Exp R.T. : 7.012 min
 Response: 0
 Conc: N.D.



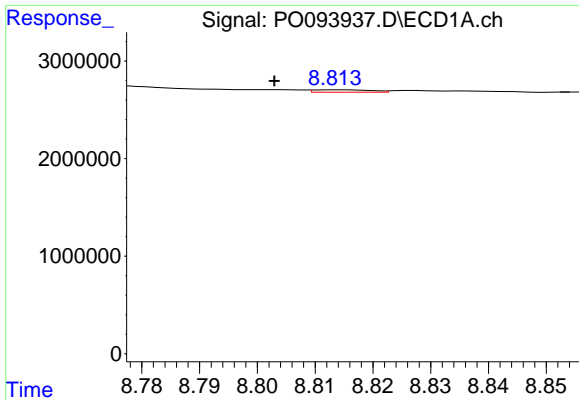
#38 AR-1262-3

R.T.: 8.711 min
 Delta R.T.: 0.000 min
 Response: 232191
 Conc: 1.42 ng/ml



#38 AR-1262-3

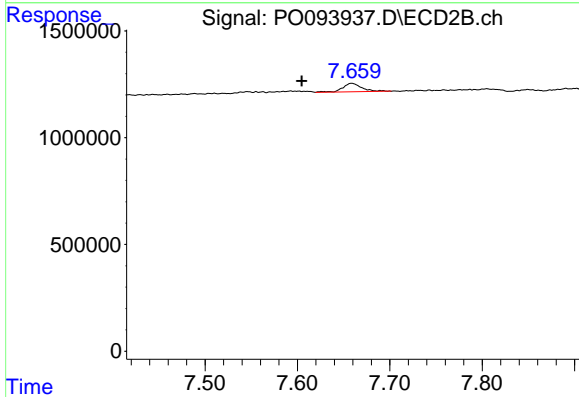
R.T.: 0.000 min
 Exp R.T. : 7.541 min
 Response: 0
 Conc: N.D.



#39 AR-1262-4

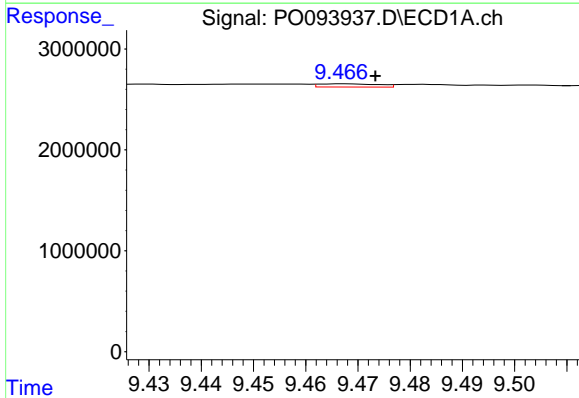
R.T.: 8.814 min
 Delta R.T.: 0.011 min
 Response: 172920
 Conc: 1.73 ng/ml

Instrument :
 ECD_O
 ClientSampleId :



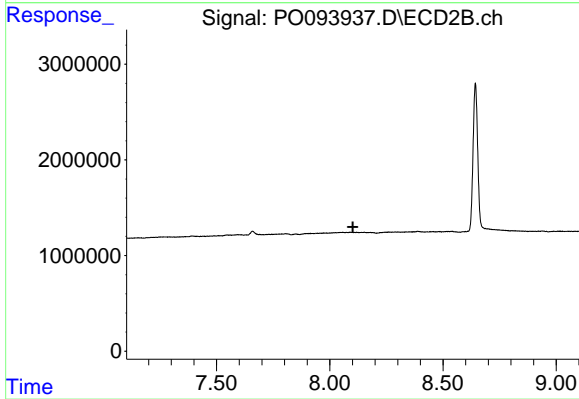
#39 AR-1262-4

R.T.: 7.659 min
 Delta R.T.: 0.054 min
 Response: 570733
 Conc: 6.88 ng/ml



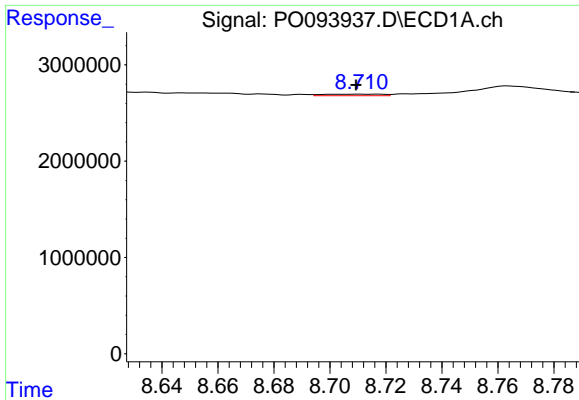
#40 AR-1262-5

R.T.: 9.468 min
 Delta R.T.: -0.006 min
 Response: 249361
 Conc: 3.10 ng/ml



#40 AR-1262-5

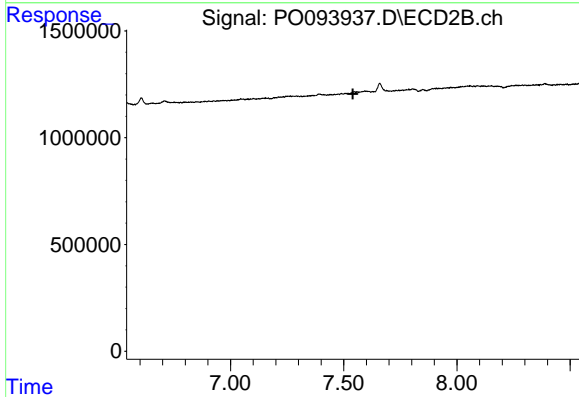
R.T.: 0.000 min
 Exp R.T. : 8.102 min
 Response: 0
 Conc: N.D.



#41 AR-1268-1

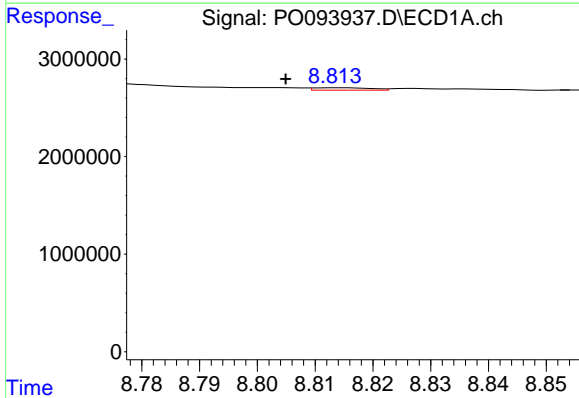
R.T.: 8.711 min
 Delta R.T.: 0.002 min
 Response: 232191
 Conc: 0.69 ng/ml

Instrument :
 ECD_O
 ClientSampleId :



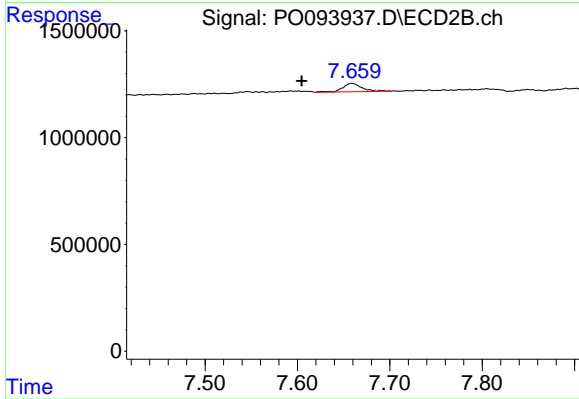
#41 AR-1268-1

R.T.: 0.000 min
 Exp R.T. : 7.540 min
 Response: 0
 Conc: N.D.



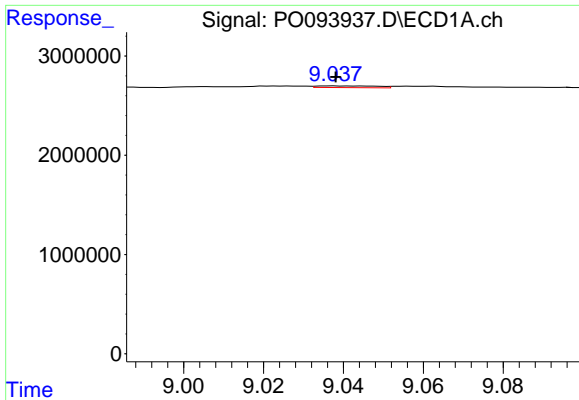
#42 AR-1268-2

R.T.: 8.814 min
 Delta R.T.: 0.009 min
 Response: 172920
 Conc: 0.54 ng/ml



#42 AR-1268-2

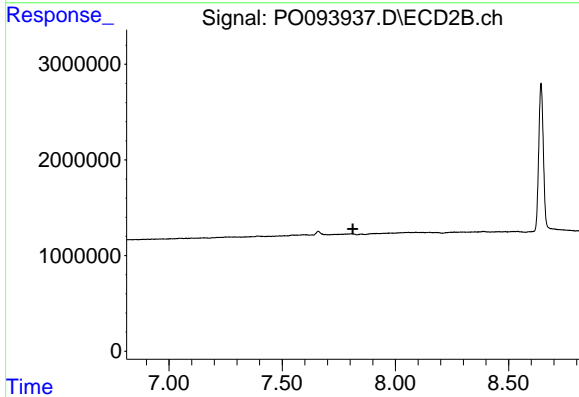
R.T.: 7.659 min
 Delta R.T.: 0.054 min
 Response: 570733
 Conc: 4.20 ng/ml



#43 AR-1268-3

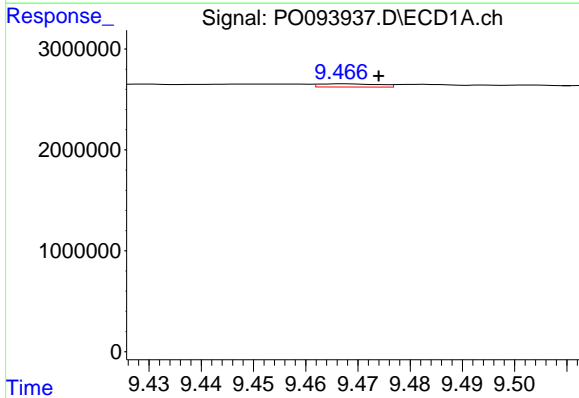
R.T.: 9.038 min
 Delta R.T.: 0.000 min
 Response: 181468
 Conc: 0.64 ng/ml

Instrument :
 ECD_O
 ClientSampleId :



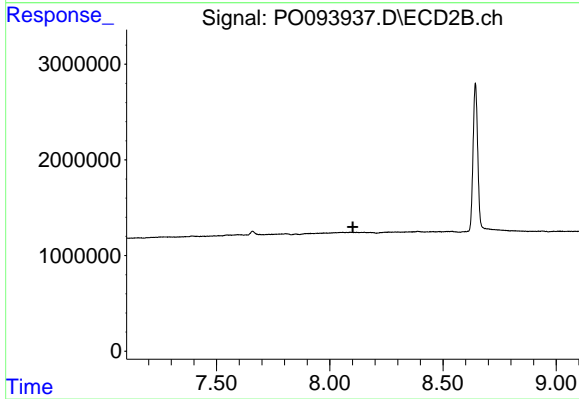
#43 AR-1268-3

R.T.: 0.000 min
 Exp R.T. : 7.812 min
 Response: 0
 Conc: N.D.



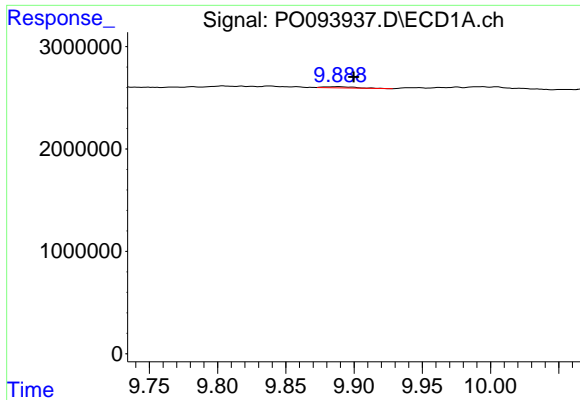
#44 AR-1268-4

R.T.: 9.468 min
 Delta R.T.: -0.006 min
 Response: 249361
 Conc: 2.58 ng/ml



#44 AR-1268-4

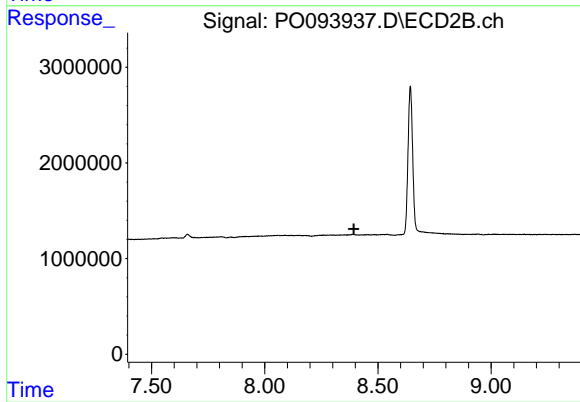
R.T.: 0.000 min
 Exp R.T. : 8.102 min
 Response: 0
 Conc: N.D.



#45 AR-1268-5

R.T.: 9.889 min
Delta R.T.: -0.011 min
Response: 186604
Conc: 0.22 ng/ml

Instrument :
ECD_O
ClientSampleId :



#45 AR-1268-5

R.T.: 0.000 min
Exp R.T. : 8.394 min
Response: 0
Conc: N.D.