

Data Path : Z:\pestpcbsrv\HPCHEM1\ECD\_O\Data\P0040723\  
 Data File : P0093963.D  
 Signal(s) : Signal #1: ECD1A.ch Signal #2: ECD2B.ch  
 Acq On : 08 Apr 2023 01:24  
 Operator : YP/AJ  
 Sample : PB151970BL  
 Misc :  
 ALS Vial : 32 Sample Multiplier: 1

Instrument :  
 ECD\_O  
 ClientSampleId :

Integration File signal 1: autoint1.e  
 Integration File signal 2: autoint2.e  
 Quant Time: Apr 08 13:02:10 2023  
 Quant Method : Z:\pestpcbsrv\HPCHEM1\ECD\_O\methods\P0040323.M  
 Quant Title : GC EXTRACTABLES  
 QLast Update : Tue Apr 04 06:20:55 2023  
 Response via : Initial Calibration  
 Integrator: ChemStation

Volume Inj. : 2 µl  
 Signal #1 Phase : ZB-MR1 Signal #2 Phase: ZB-MR2  
 Signal #1 Info : 30Mx0.32mmx 0.50µ Signal #2 Info : 30M x 0.32mm x 0.25µm

Compound	RT#1	RT#2	Resp#1	Resp#2	ng/ml	ng/ml
-----						
System Monitoring Compounds						
1) SA Tetrachlo...	4.418	3.623	76757724	27983800	20.533	21.975
2) SA Decachlor...	10.238	8.641	57768224	26789688	25.825	26.795
Target Compounds						
3) L1 AR-1016-1	5.595	0.000	345415	0	3.378	N.D. #
4) L1 AR-1016-2	5.616	0.000	262476	0	1.684	N.D. #
5) L1 AR-1016-3	5.671	0.000	505715	0	5.127	N.D. #
6) L1 AR-1016-4	5.767	0.000	2075	0	0.028	N.D. #
7) L1 AR-1016-5	6.055	0.000	24295	0	0.287	N.D. #
8) L2 AR-1221-1	4.620	0.000	150716	0	3.268	N.D. #
9) L2 AR-1221-2	4.724	3.921	1014166	395615	29.545	33.520
10) L2 AR-1221-3	4.801	0.000	58074	0	0.554	N.D. #
11) L3 AR-1232-1	4.801	0.000	58074	0	0.665	N.D. #
12) L3 AR-1232-2	5.342	0.000	36471	0	0.853	N.D. #
13) L3 AR-1232-3	5.616	0.000	262476	0	3.573	N.D. #
14) L3 AR-1232-4	5.767	0.000	2075	0	0.060	N.D. #
15) L3 AR-1232-5	5.878	0.000	157918	0	4.972	N.D. #
16) L4 AR-1242-1	5.595	0.000	345415	0	3.957	N.D. #
17) L4 AR-1242-2	5.616	0.000	262476	0	1.974	N.D. #
18) L4 AR-1242-3	5.671	0.000	505715	0	5.957	N.D. #
19) L4 AR-1242-4	5.767	0.000	2075	0	0.033	N.D. #
20) L4 AR-1242-5	6.524	0.000	125495	0	1.864	N.D. #
21) L5 AR-1248-1	5.595	0.000	345415	0	5.134	N.D. #
22) L5 AR-1248-2	5.878	0.000	157918	0	1.444	N.D. #
23) L5 AR-1248-3	6.055	0.000	24295	0	0.201	N.D. #
24) L5 AR-1248-4	6.502	0.000	902846	0	8.407	N.D. #
25) L5 AR-1248-5	6.524	0.000	125495	0	1.082	N.D. #
26) L6 AR-1254-1	6.437	0.000	63262	0	0.466	N.D. #
27) L6 AR-1254-2	6.678	0.000	52337	0	0.268	N.D. #
28) L6 AR-1254-3	7.046	0.000	470387	0	2.546	N.D. #
29) L6 AR-1254-4	7.333	0.000	197667	0	1.949	N.D. #
30) L6 AR-1254-5	7.772	0.000	1734581	0	12.791	N.D. #
31) L7 AR-1260-1	7.242	0.000	45567	0	0.312	N.D. #
32) L7 AR-1260-2	7.459	0.000	97305	0	0.608	N.D. #
33) L7 AR-1260-3	7.847	0.000	211528	0	1.593	N.D. #
34) L7 AR-1260-4	8.050	0.000	13392	0	0.097	N.D. #
35) L7 AR-1260-5	8.418	0.000	475040	0	2.181	N.D. #
36) L8 AR-1262-1	7.847	0.000	211528	0	1.238	N.D. #
37) L8 AR-1262-2	8.418	0.000	475040	0	2.044	N.D. #
38) L8 AR-1262-3	8.711	0.000	128990	0	0.787	N.D. #
39) L8 AR-1262-4	8.820	7.656f	50668	392445	0.506	4.732 #
40) L8 AR-1262-5	9.477	0.000	270988	0	3.367	N.D. #
41) L9 AR-1268-1	8.711	0.000	128990	0	0.383	N.D. #

Data Path : Z:\pestpcbsrv\HPCHEM1\ECD\_0\Data\P0040723\  
 Data File : P0093963.D  
 Signal(s) : Signal #1: ECD1A.ch Signal #2: ECD2B.ch  
 Acq On : 08 Apr 2023 01:24  
 Operator : YP/AJ  
 Sample : PB151970BL  
 Misc :  
 ALS Vial : 32 Sample Multiplier: 1

Instrument :  
 ECD\_0  
 ClientSampleId :

Integration File signal 1: autoint1.e  
 Integration File signal 2: autoint2.e  
 Quant Time: Apr 08 13:02:10 2023  
 Quant Method : Z:\pestpcbsrv\HPCHEM1\ECD\_0\methods\P0040323.M  
 Quant Title : GC EXTRACTABLES  
 QLast Update : Tue Apr 04 06:20:55 2023  
 Response via : Initial Calibration  
 Integrator: ChemStation

Volume Inj. : 2 µl  
 Signal #1 Phase : ZB-MR1 Signal #2 Phase: ZB-MR2  
 Signal #1 Info : 30Mx0.32mmx 0.50µ Signal #2 Info : 30M x 0.32mm x 0.25µm

	Compound	RT#1	RT#2	Resp#1	Resp#2	ng/ml	ng/ml
42)	L9 AR-1268-2	8.820	7.656f	50668	392445	0.157	2.889 #
43)	L9 AR-1268-3	9.034	0.000	316473	0	1.116	N.D. #
44)	L9 AR-1268-4	9.477	0.000	270988	0	2.803	N.D. #
45)	L9 AR-1268-5	9.890	0.000	183349	0	0.218	N.D. #

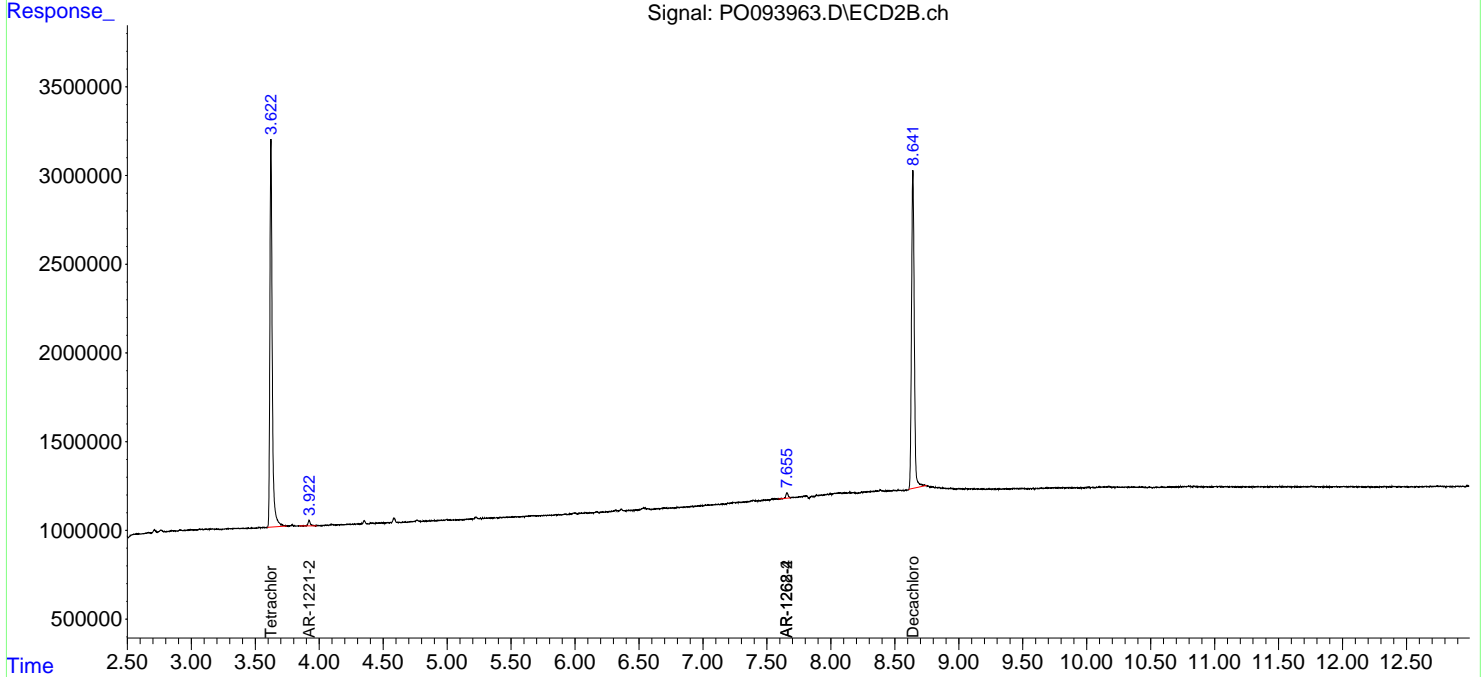
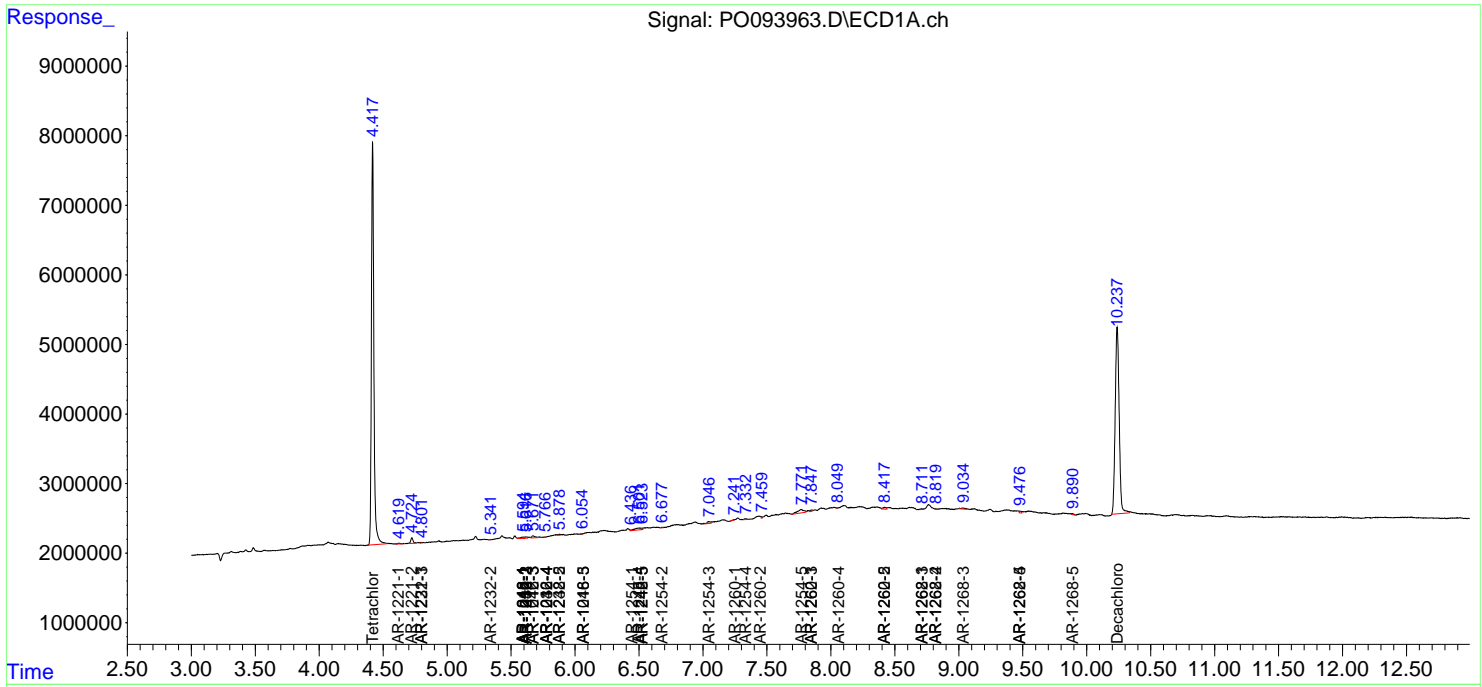
(f)=RT Delta > 1/2 Window (#)=Amounts differ by > 25% (m)=manual int.

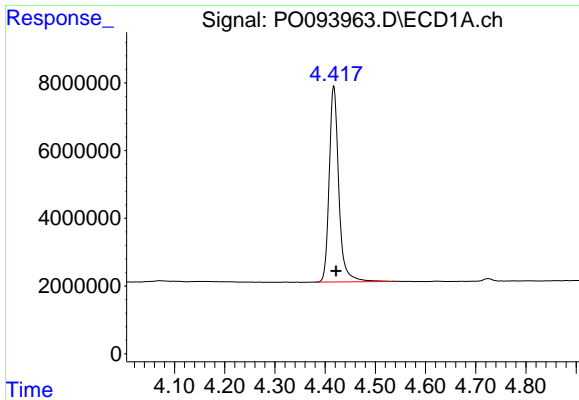
Data Path : Z:\pestpcbsrv\HPCHEM1\ECD\_O\Data\PO040723\  
 Data File : PO093963.D  
 Signal(s) : Signal #1: ECD1A.ch Signal #2: ECD2B.ch  
 Acq On : 08 Apr 2023 01:24  
 Operator : YP/AJ  
 Sample : PB151970BL  
 Misc :  
 ALS Vial : 32 Sample Multiplier: 1

Instrument :  
 ECD\_O  
 ClientSampleId :

Integration File signal 1: autoint1.e  
 Integration File signal 2: autoint2.e  
 Quant Time: Apr 08 13:02:10 2023  
 Quant Method : Z:\pestpcbsrv\HPCHEM1\ECD\_O\methods\PO040323.M  
 Quant Title : GC EXTRACTABLES  
 QLast Update : Tue Apr 04 06:20:55 2023  
 Response via : Initial Calibration  
 Integrator: ChemStation

Volume Inj. : 2 µl  
 Signal #1 Phase : ZB-MR1 Signal #2 Phase: ZB-MR2  
 Signal #1 Info : 30Mx0.32mmx 0.50µ Signal #2 Info : 30M x 0.32mm x 0.25µm

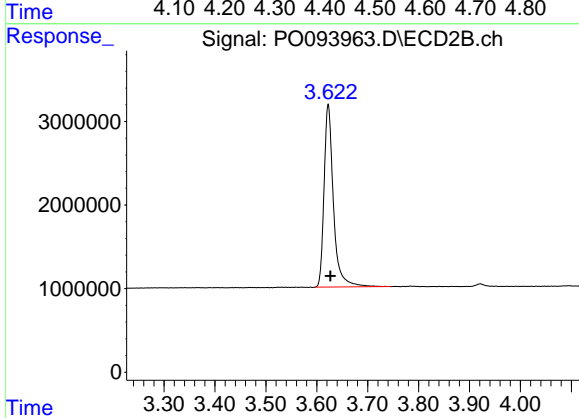




#1 Tetrachloro-m-xylene

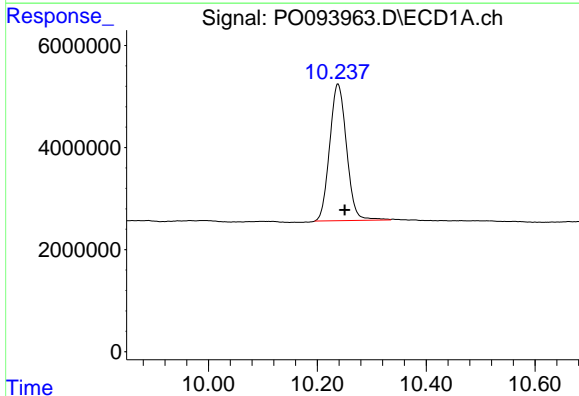
R.T.: 4.418 min  
 Delta R.T.: -0.004 min  
 Response: 76757724  
 Conc: 20.53 ng/ml

Instrument :  
 ECD\_O  
 ClientSampleId :



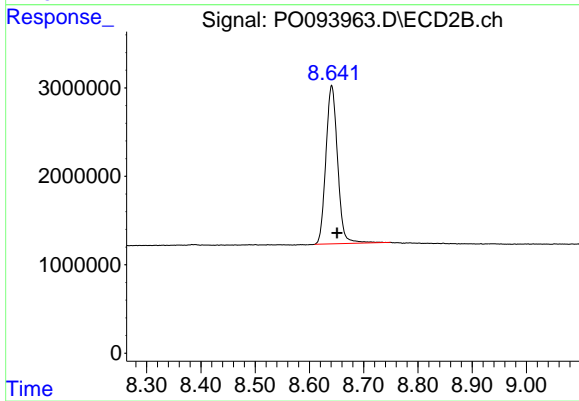
#1 Tetrachloro-m-xylene

R.T.: 3.623 min  
 Delta R.T.: -0.004 min  
 Response: 27983800  
 Conc: 21.98 ng/ml



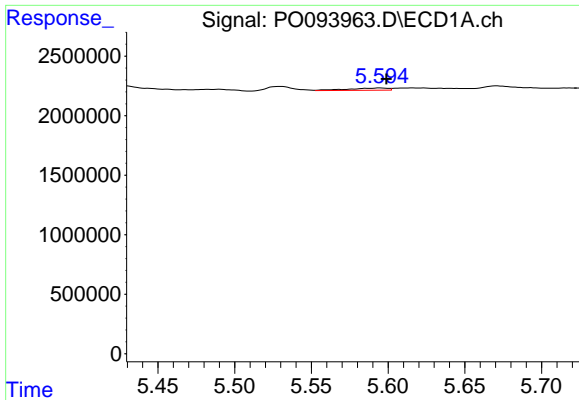
#2 Decachlorobiphenyl

R.T.: 10.238 min  
 Delta R.T.: -0.013 min  
 Response: 57768224  
 Conc: 25.82 ng/ml



#2 Decachlorobiphenyl

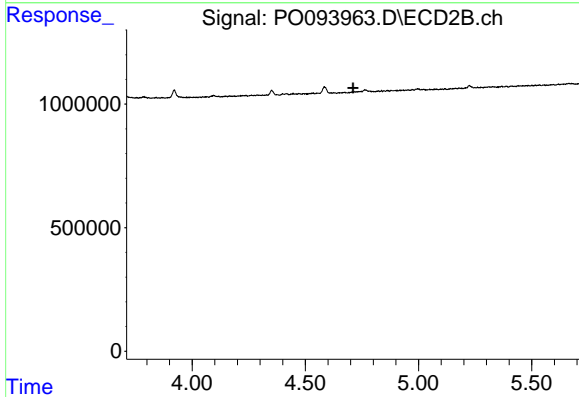
R.T.: 8.641 min  
 Delta R.T.: -0.010 min  
 Response: 26789688  
 Conc: 26.80 ng/ml



#3 AR-1016-1

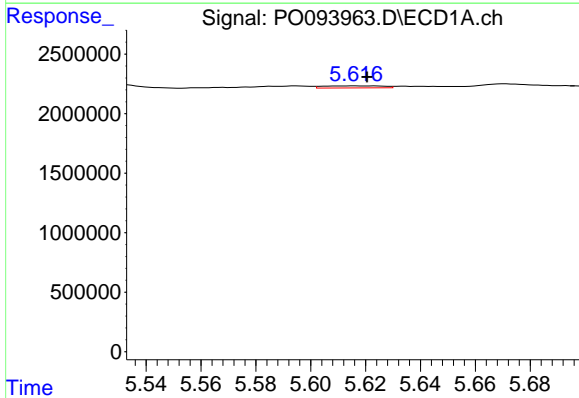
R.T.: 5.595 min  
 Delta R.T.: -0.004 min  
 Response: 345415  
 Conc: 3.38 ng/ml

Instrument :  
 ECD\_O  
 ClientSampleId :



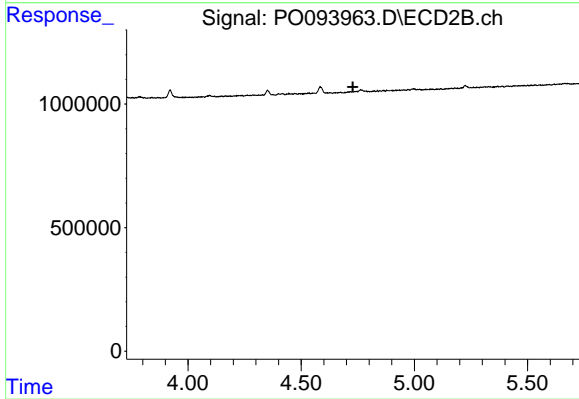
#3 AR-1016-1

R.T.: 0.000 min  
 Exp R.T. : 4.710 min  
 Response: 0  
 Conc: N.D.



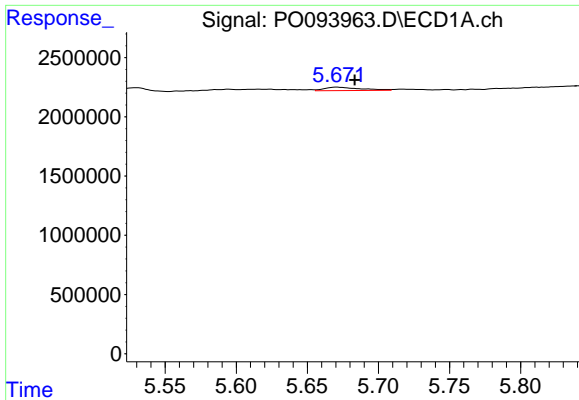
#4 AR-1016-2

R.T.: 5.616 min  
 Delta R.T.: -0.004 min  
 Response: 262476  
 Conc: 1.68 ng/ml



#4 AR-1016-2

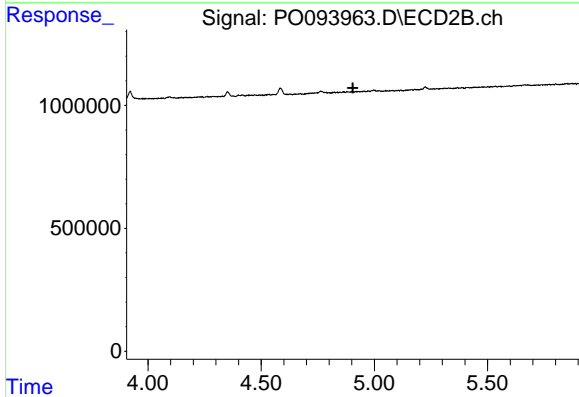
R.T.: 0.000 min  
 Exp R.T. : 4.729 min  
 Response: 0  
 Conc: N.D.



#5 AR-1016-3

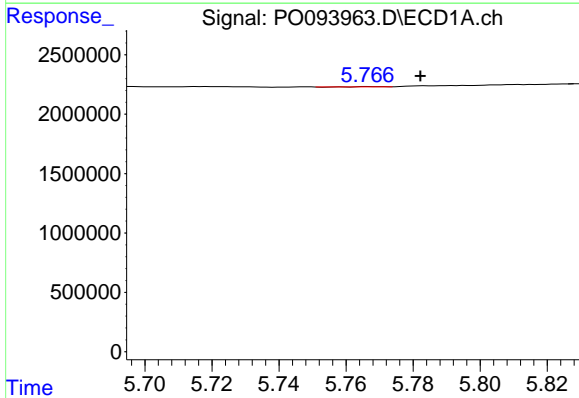
R.T.: 5.671 min  
 Delta R.T.: -0.012 min  
 Response: 505715  
 Conc: 5.13 ng/ml

Instrument :  
 ECD\_O  
 ClientSampleId :



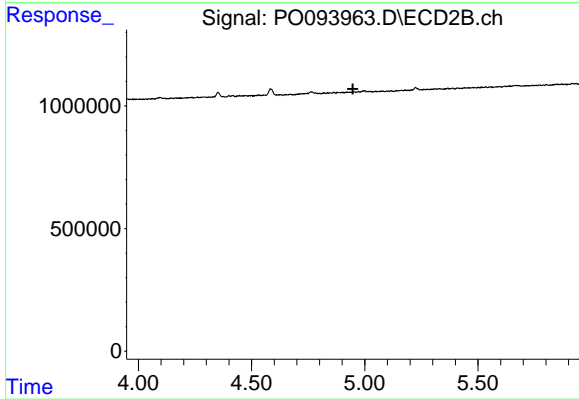
#5 AR-1016-3

R.T.: 0.000 min  
 Exp R.T. : 4.905 min  
 Response: 0  
 Conc: N.D.



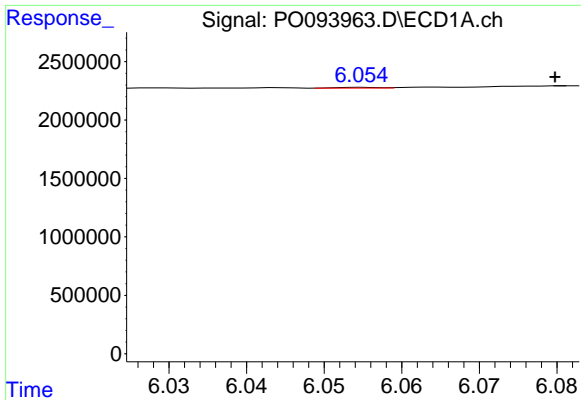
#6 AR-1016-4

R.T.: 5.767 min  
 Delta R.T.: -0.015 min  
 Response: 2075  
 Conc: 0.03 ng/ml



#6 AR-1016-4

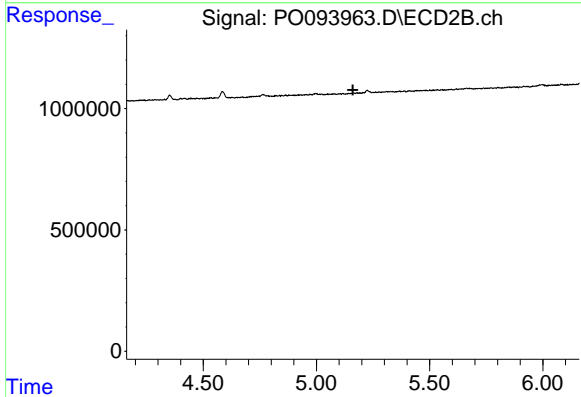
R.T.: 0.000 min  
 Exp R.T. : 4.948 min  
 Response: 0  
 Conc: N.D.



#7 AR-1016-5

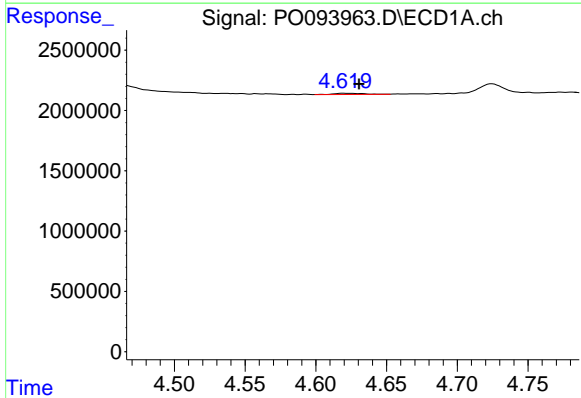
R.T.: 6.055 min  
 Delta R.T.: -0.025 min  
 Response: 24295  
 Conc: 0.29 ng/ml

Instrument :  
 ECD\_O  
 ClientSampleId :



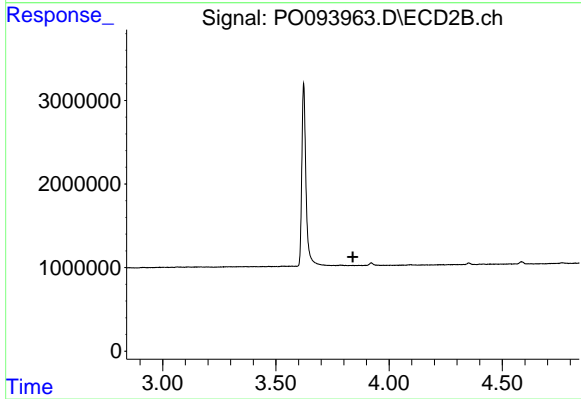
#7 AR-1016-5

R.T.: 0.000 min  
 Exp R.T. : 5.161 min  
 Response: 0  
 Conc: N.D.



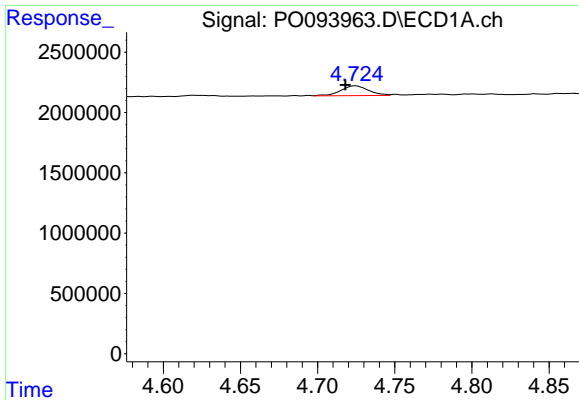
#8 AR-1221-1

R.T.: 4.620 min  
 Delta R.T.: -0.011 min  
 Response: 150716  
 Conc: 3.27 ng/ml



#8 AR-1221-1

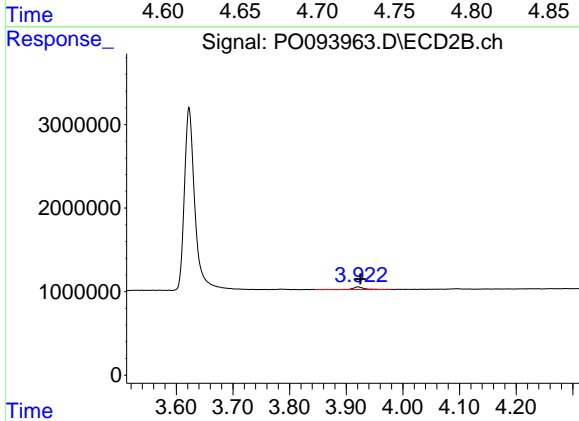
R.T.: 0.000 min  
 Exp R.T. : 3.840 min  
 Response: 0  
 Conc: N.D.



#9 AR-1221-2

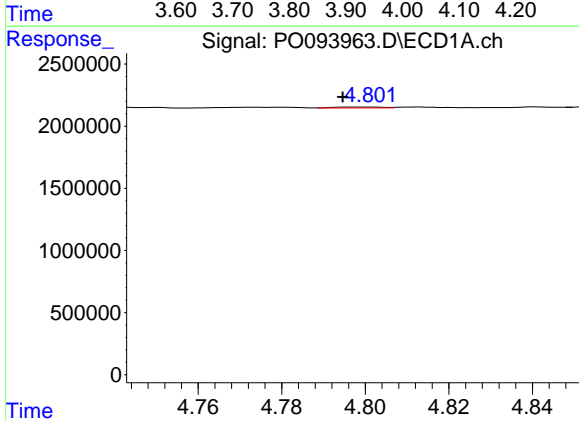
R.T.: 4.724 min  
 Delta R.T.: 0.007 min  
 Response: 1014166  
 Conc: 29.54 ng/ml

Instrument :  
 ECD\_O  
 ClientSampleId :



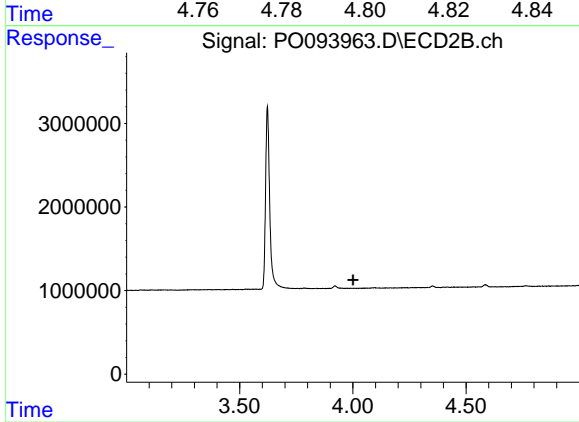
#9 AR-1221-2

R.T.: 3.921 min  
 Delta R.T.: -0.003 min  
 Response: 395615  
 Conc: 33.52 ng/ml



#10 AR-1221-3

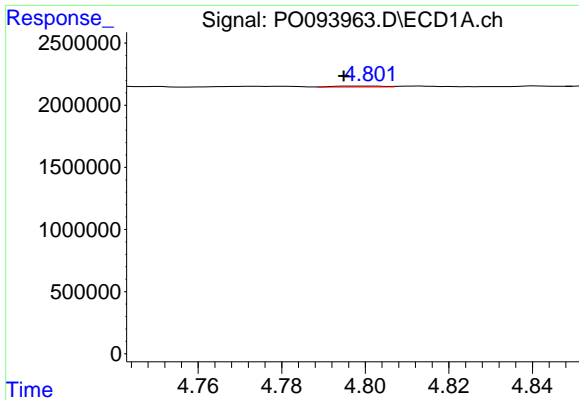
R.T.: 4.801 min  
 Delta R.T.: 0.006 min  
 Response: 58074  
 Conc: 0.55 ng/ml



#10 AR-1221-3

R.T.: 0.000 min  
 Exp R.T. : 4.000 min  
 Response: 0  
 Conc: N.D.

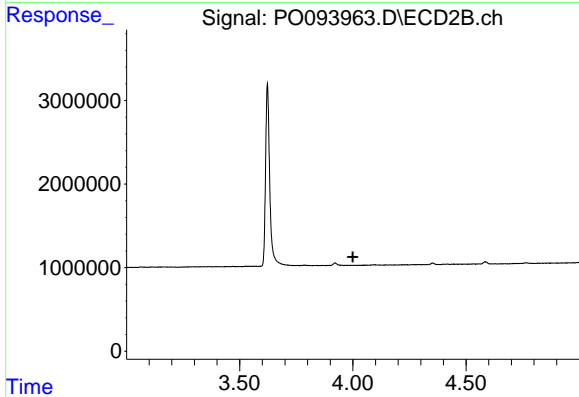




#11 AR-1232-1

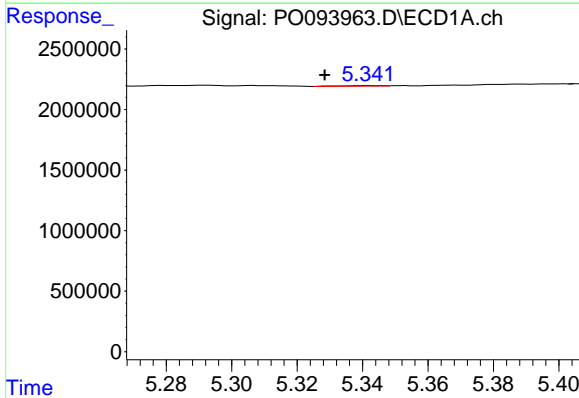
R.T.: 4.801 min  
 Delta R.T.: 0.006 min  
 Response: 58074  
 Conc: 0.67 ng/ml

Instrument :  
 ECD\_O  
 ClientSampleId :



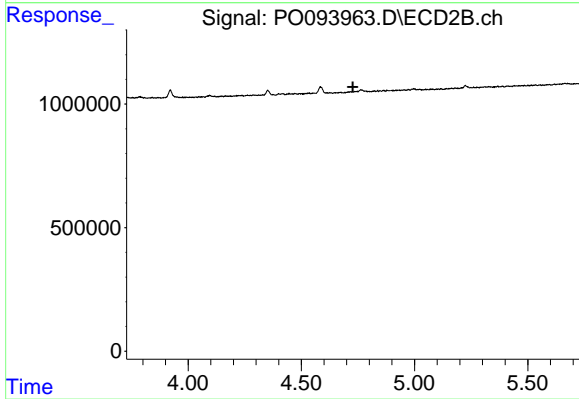
#11 AR-1232-1

R.T.: 0.000 min  
 Exp R.T. : 4.000 min  
 Response: 0  
 Conc: N.D.



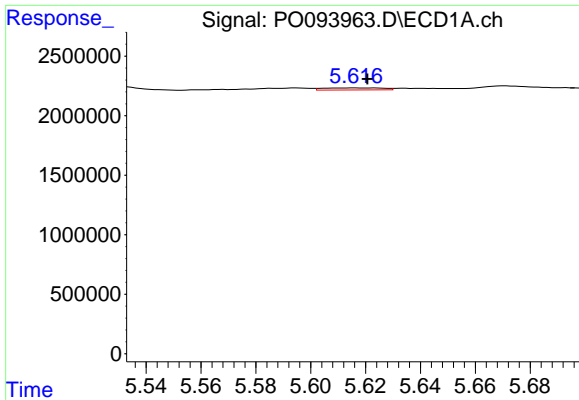
#12 AR-1232-2

R.T.: 5.342 min  
 Delta R.T.: 0.013 min  
 Response: 36471  
 Conc: 0.85 ng/ml



#12 AR-1232-2

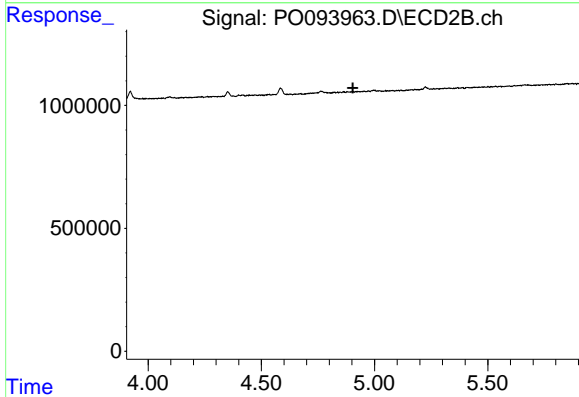
R.T.: 0.000 min  
 Exp R.T. : 4.728 min  
 Response: 0  
 Conc: N.D.



#13 AR-1232-3

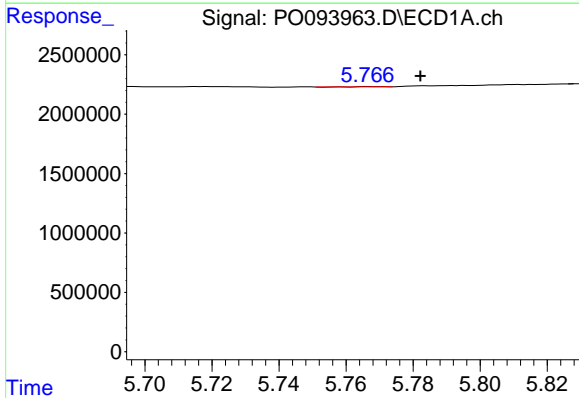
R.T.: 5.616 min  
 Delta R.T.: -0.004 min  
 Response: 262476  
 Conc: 3.57 ng/ml

Instrument :  
 ECD\_O  
 ClientSampleId :



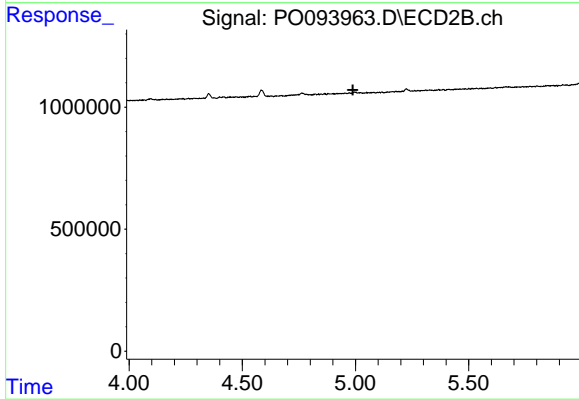
#13 AR-1232-3

R.T.: 0.000 min  
 Exp R.T. : 4.904 min  
 Response: 0  
 Conc: N.D.



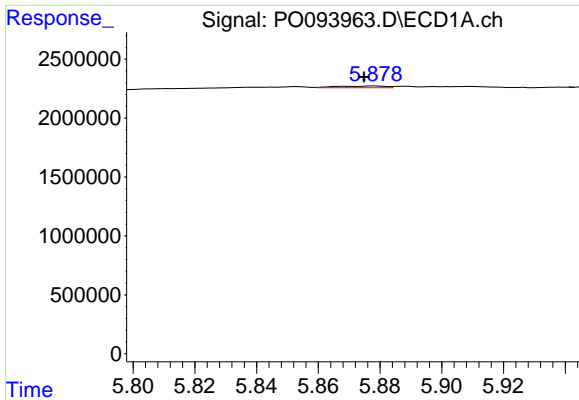
#14 AR-1232-4

R.T.: 5.767 min  
 Delta R.T.: -0.015 min  
 Response: 2075  
 Conc: 0.06 ng/ml



#14 AR-1232-4

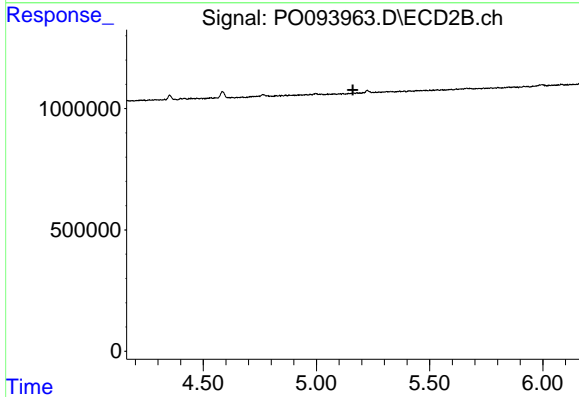
R.T.: 0.000 min  
 Exp R.T. : 4.988 min  
 Response: 0  
 Conc: N.D.



#15 AR-1232-5

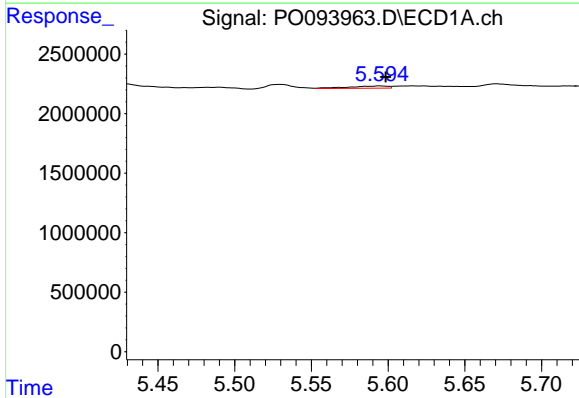
R.T.: 5.878 min  
 Delta R.T.: 0.003 min  
 Response: 157918  
 Conc: 4.97 ng/ml

Instrument :  
 ECD\_O  
 ClientSampleId :



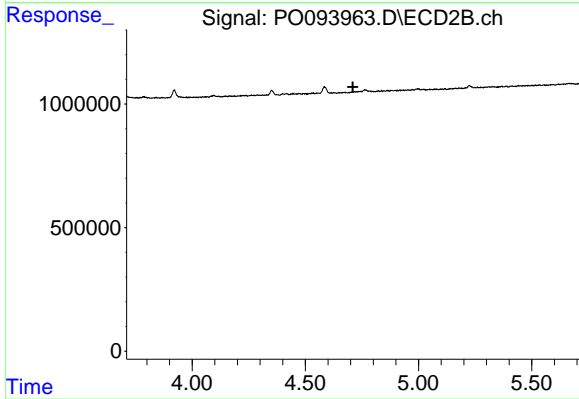
#15 AR-1232-5

R.T.: 0.000 min  
 Exp R.T. : 5.161 min  
 Response: 0  
 Conc: N.D.



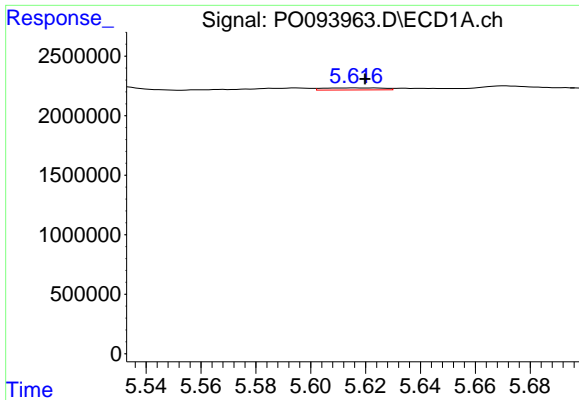
#16 AR-1242-1

R.T.: 5.595 min  
 Delta R.T.: -0.003 min  
 Response: 345415  
 Conc: 3.96 ng/ml



#16 AR-1242-1

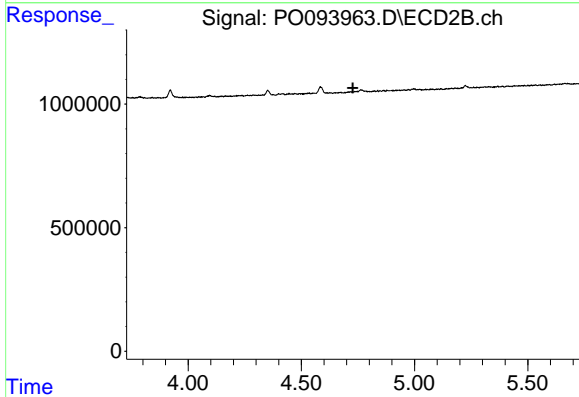
R.T.: 0.000 min  
 Exp R.T. : 4.710 min  
 Response: 0  
 Conc: N.D.



#17 AR-1242-2

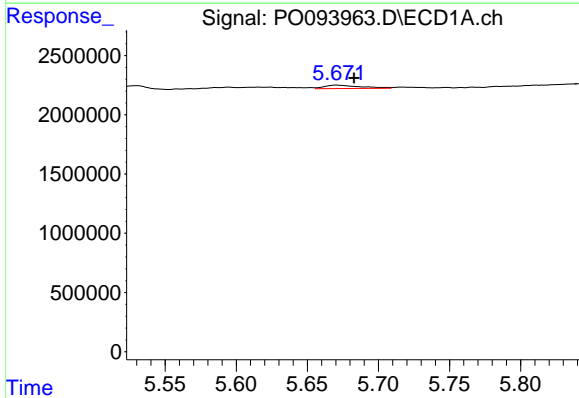
R.T.: 5.616 min  
 Delta R.T.: -0.003 min  
 Response: 262476  
 Conc: 1.97 ng/ml

Instrument :  
 ECD\_O  
 ClientSampleId :



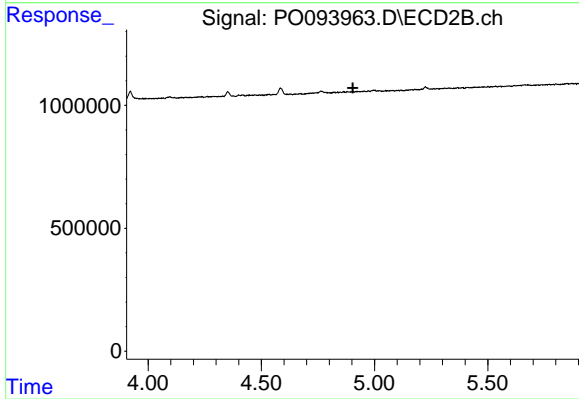
#17 AR-1242-2

R.T.: 0.000 min  
 Exp R.T. : 4.728 min  
 Response: 0  
 Conc: N.D.



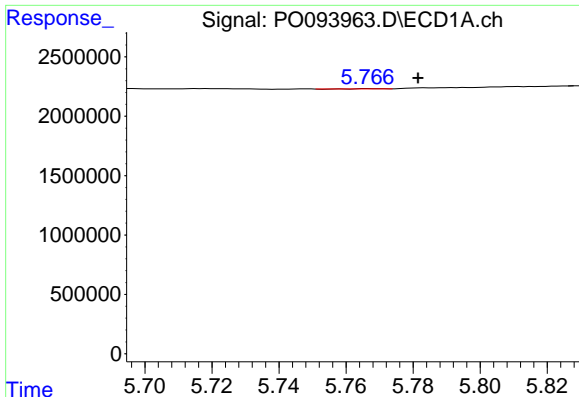
#18 AR-1242-3

R.T.: 5.671 min  
 Delta R.T.: -0.012 min  
 Response: 505715  
 Conc: 5.96 ng/ml



#18 AR-1242-3

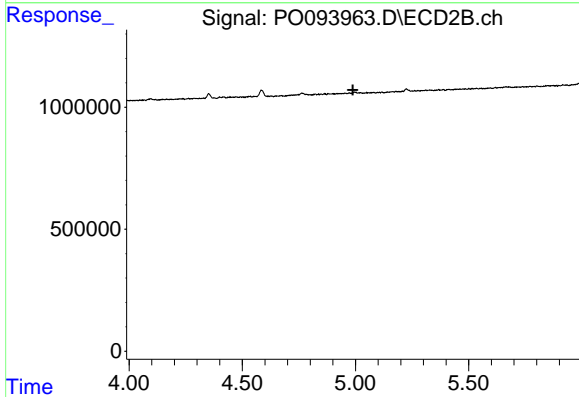
R.T.: 0.000 min  
 Exp R.T. : 4.904 min  
 Response: 0  
 Conc: N.D.



#19 AR-1242-4

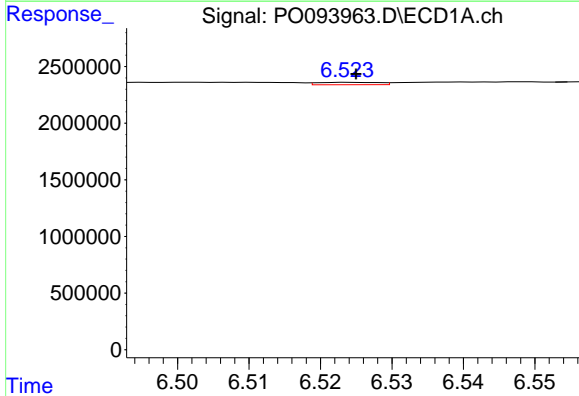
R.T.: 5.767 min  
 Delta R.T.: -0.015 min  
 Response: 2075  
 Conc: 0.03 ng/ml

Instrument :  
 ECD\_O  
 ClientSampleId :



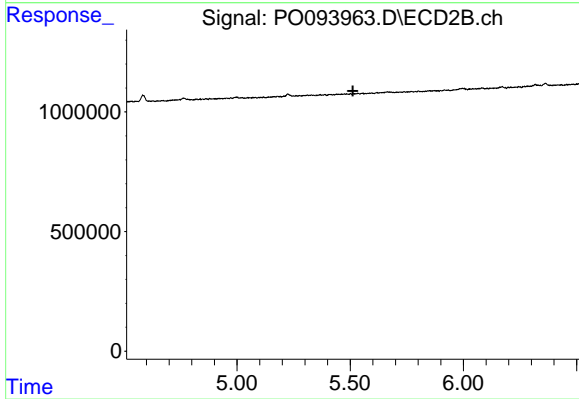
#19 AR-1242-4

R.T.: 0.000 min  
 Exp R.T. : 4.988 min  
 Response: 0  
 Conc: N.D.



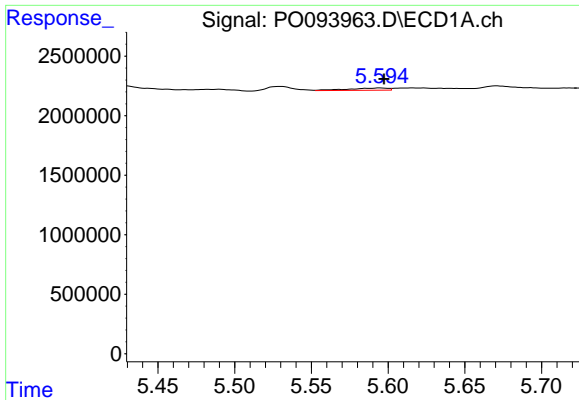
#20 AR-1242-5

R.T.: 6.524 min  
 Delta R.T.: 0.000 min  
 Response: 125495  
 Conc: 1.86 ng/ml



#20 AR-1242-5

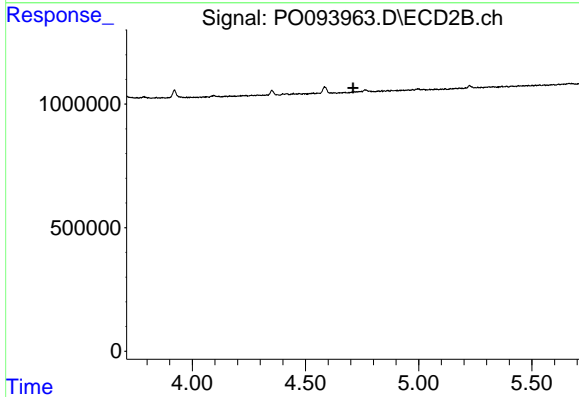
R.T.: 0.000 min  
 Exp R.T. : 5.512 min  
 Response: 0  
 Conc: N.D.



#21 AR-1248-1

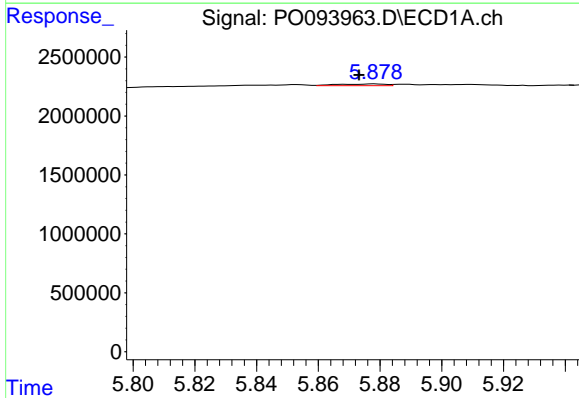
R.T.: 5.595 min  
 Delta R.T.: -0.002 min  
 Response: 345415  
 Conc: 5.13 ng/ml

Instrument :  
 ECD\_O  
 ClientSampleId :



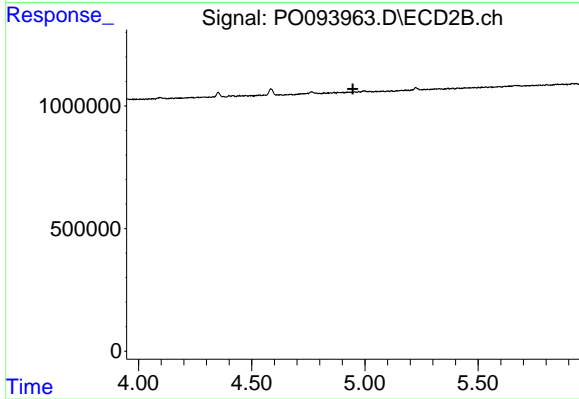
#21 AR-1248-1

R.T.: 0.000 min  
 Exp R.T. : 4.710 min  
 Response: 0  
 Conc: N.D.



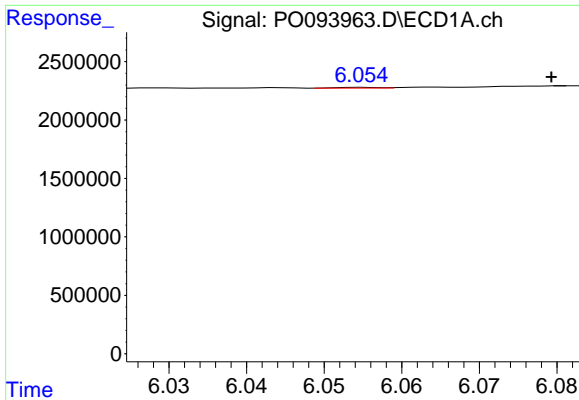
#22 AR-1248-2

R.T.: 5.878 min  
 Delta R.T.: 0.005 min  
 Response: 157918  
 Conc: 1.44 ng/ml



#22 AR-1248-2

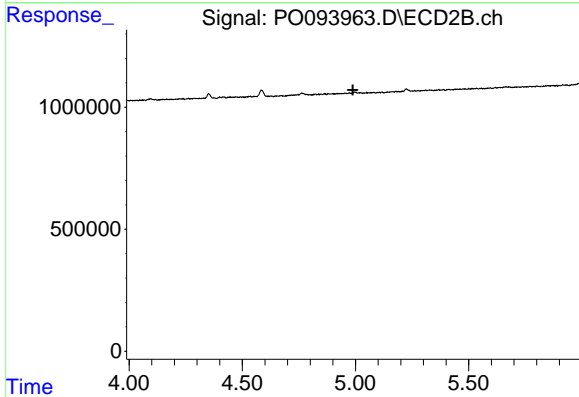
R.T.: 0.000 min  
 Exp R.T. : 4.947 min  
 Response: 0  
 Conc: N.D.



#23 AR-1248-3

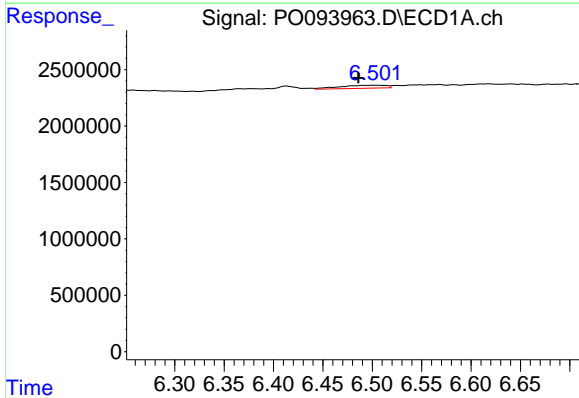
R.T.: 6.055 min  
 Delta R.T.: -0.024 min  
 Response: 24295  
 Conc: 0.20 ng/ml

Instrument :  
 ECD\_O  
 ClientSampleId :



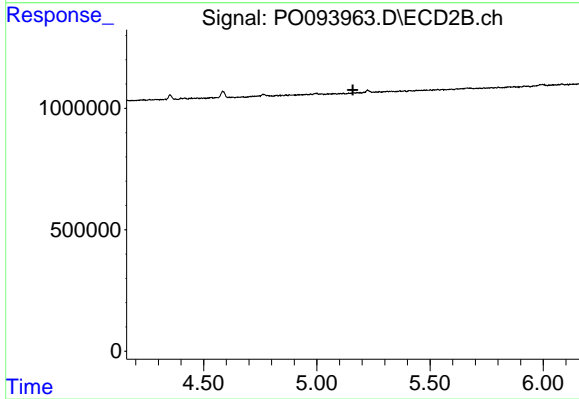
#23 AR-1248-3

R.T.: 0.000 min  
 Exp R.T. : 4.988 min  
 Response: 0  
 Conc: N.D.



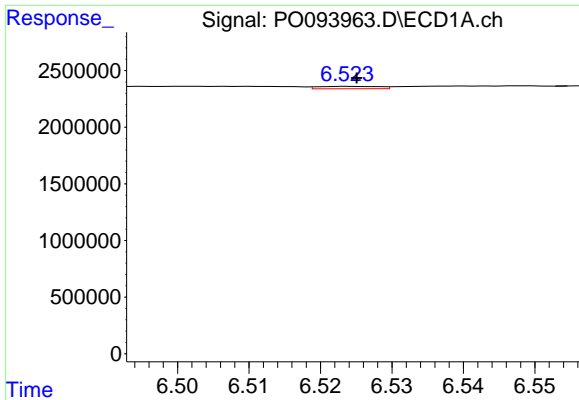
#24 AR-1248-4

R.T.: 6.502 min  
 Delta R.T.: 0.016 min  
 Response: 902846  
 Conc: 8.41 ng/ml



#24 AR-1248-4

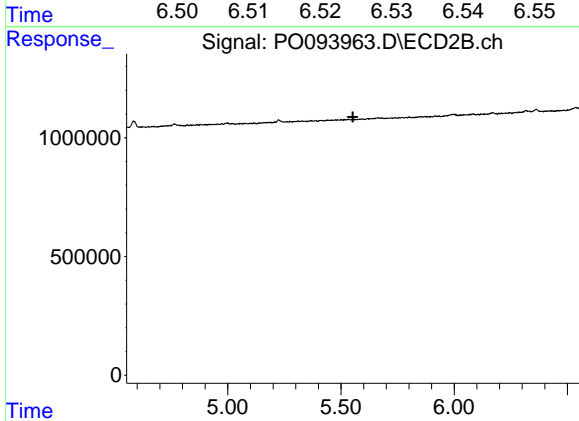
R.T.: 0.000 min  
 Exp R.T. : 5.160 min  
 Response: 0  
 Conc: N.D.



#25 AR-1248-5

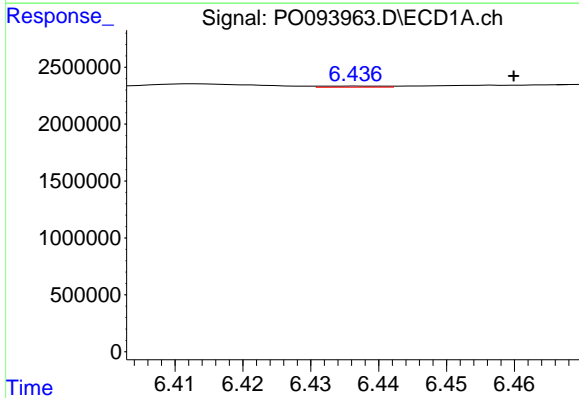
R.T.: 6.524 min  
Delta R.T.: 0.000 min  
Response: 125495  
Conc: 1.08 ng/ml

Instrument :  
ECD\_O  
ClientSampleId :



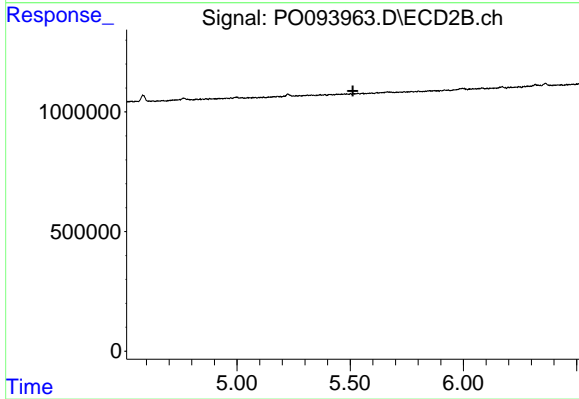
#25 AR-1248-5

R.T.: 0.000 min  
Exp R.T. : 5.553 min  
Response: 0  
Conc: N.D.



#26 AR-1254-1

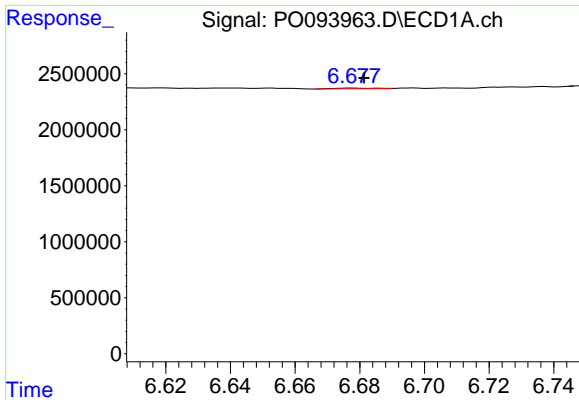
R.T.: 6.437 min  
Delta R.T.: -0.023 min  
Response: 63262  
Conc: 0.47 ng/ml



#26 AR-1254-1

R.T.: 0.000 min  
Exp R.T. : 5.512 min  
Response: 0  
Conc: N.D.

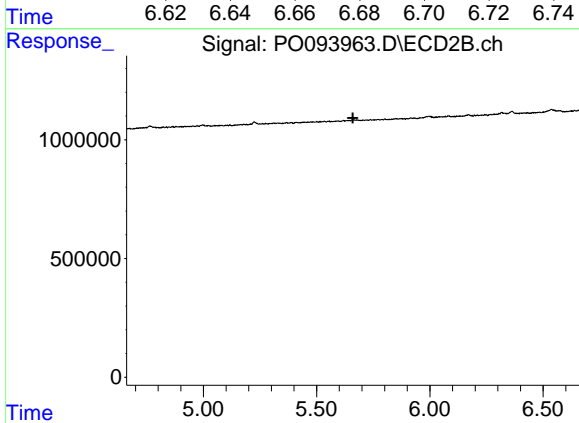




#27 AR-1254-2

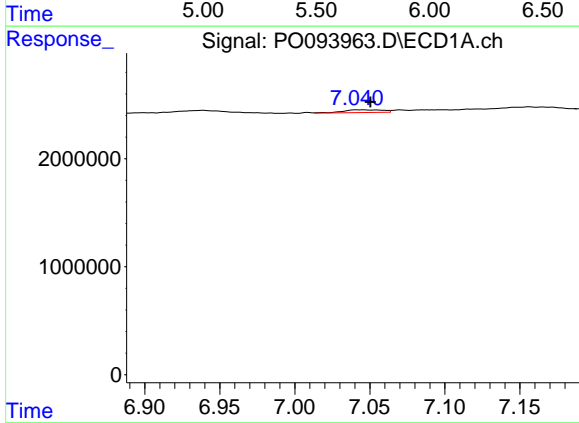
R.T.: 6.678 min  
 Delta R.T.: -0.003 min  
 Response: 52337  
 Conc: 0.27 ng/ml

Instrument :  
 ECD\_O  
 ClientSampleId :



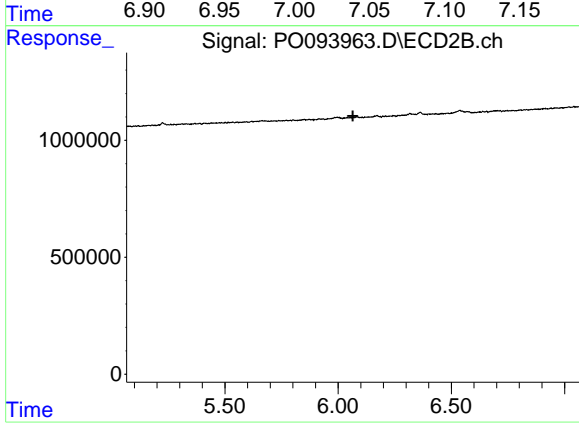
#27 AR-1254-2

R.T.: 0.000 min  
 Exp R.T. : 5.660 min  
 Response: 0  
 Conc: N.D.



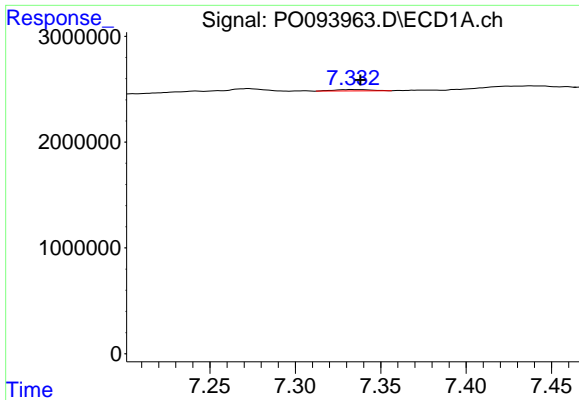
#28 AR-1254-3

R.T.: 7.046 min  
 Delta R.T.: -0.004 min  
 Response: 470387  
 Conc: 2.55 ng/ml



#28 AR-1254-3

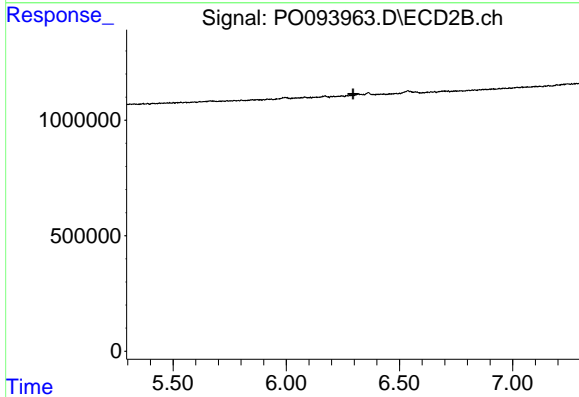
R.T.: 0.000 min  
 Exp R.T. : 6.065 min  
 Response: 0  
 Conc: N.D.



#29 AR-1254-4

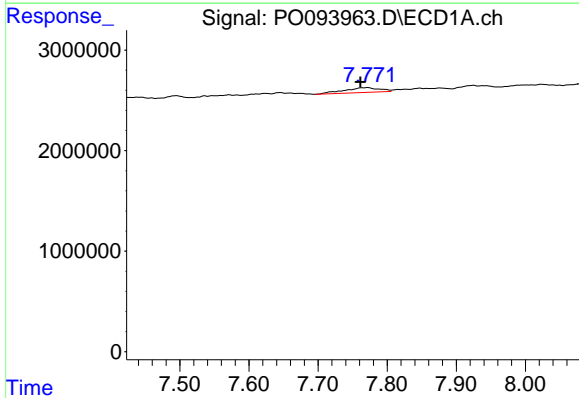
R.T.: 7.333 min  
 Delta R.T.: -0.005 min  
 Response: 197667  
 Conc: 1.95 ng/ml

Instrument :  
 ECD\_O  
 ClientSampleId :



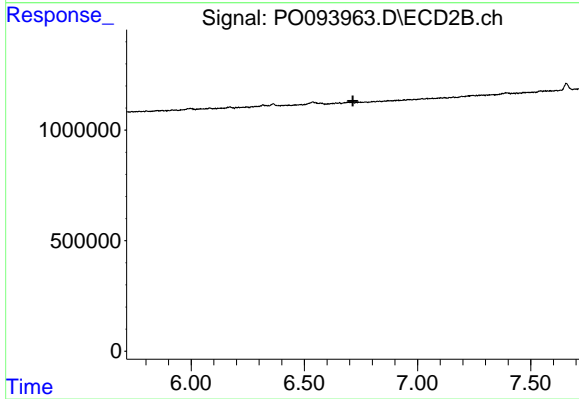
#29 AR-1254-4

R.T.: 0.000 min  
 Exp R.T. : 6.295 min  
 Response: 0  
 Conc: N.D.



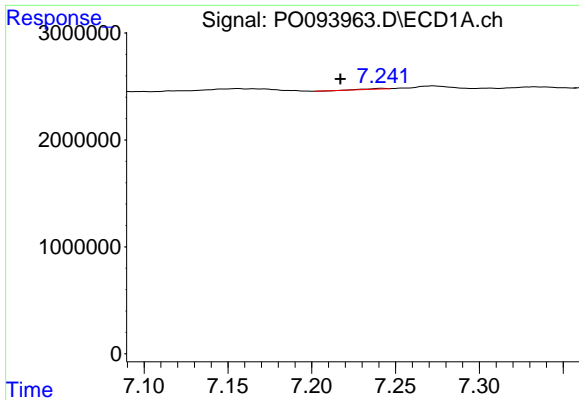
#30 AR-1254-5

R.T.: 7.772 min  
 Delta R.T.: 0.011 min  
 Response: 1734581  
 Conc: 12.79 ng/ml



#30 AR-1254-5

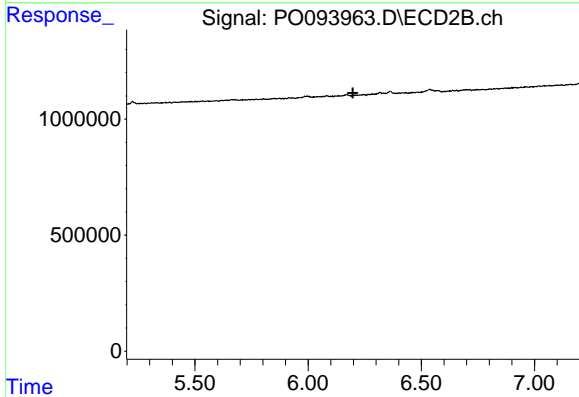
R.T.: 0.000 min  
 Exp R.T. : 6.714 min  
 Response: 0  
 Conc: N.D.



#31 AR-1260-1

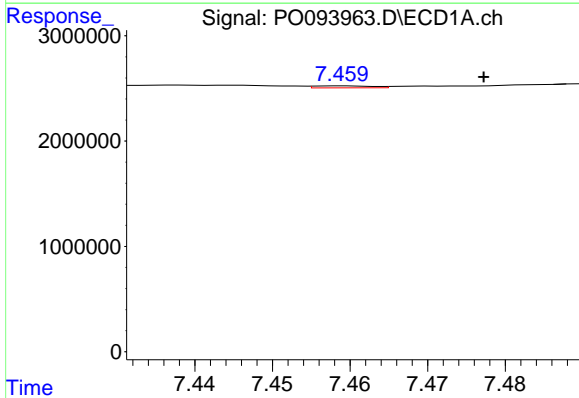
R.T.: 7.242 min  
 Delta R.T.: 0.025 min  
 Response: 45567  
 Conc: 0.31 ng/ml

Instrument :  
 ECD\_O  
 ClientSampleId :



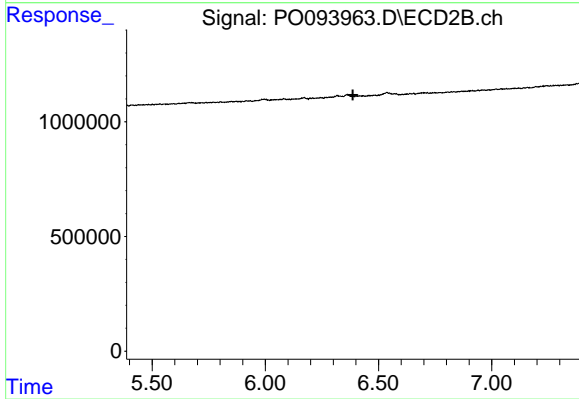
#31 AR-1260-1

R.T.: 0.000 min  
 Exp R.T. : 6.197 min  
 Response: 0  
 Conc: N.D.



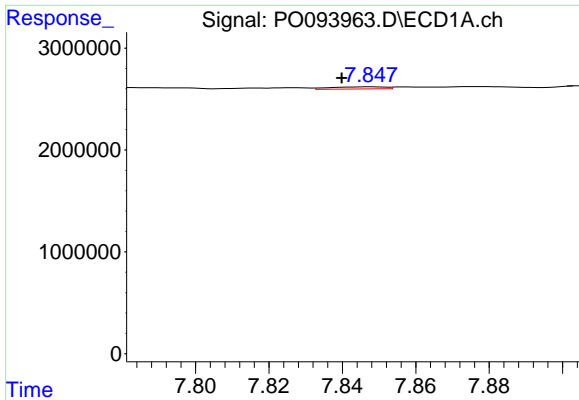
#32 AR-1260-2

R.T.: 7.459 min  
 Delta R.T.: -0.018 min  
 Response: 97305  
 Conc: 0.61 ng/ml



#32 AR-1260-2

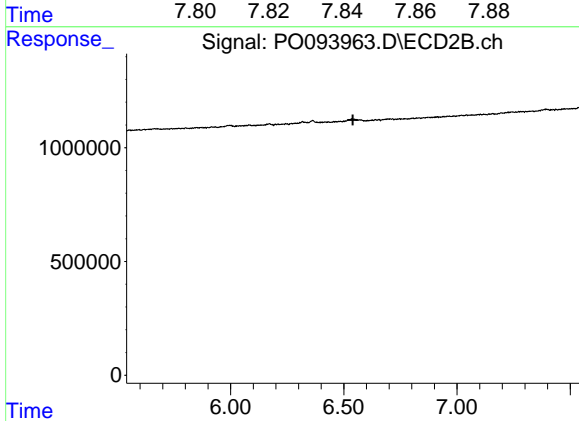
R.T.: 0.000 min  
 Exp R.T. : 6.387 min  
 Response: 0  
 Conc: N.D.



#33 AR-1260-3

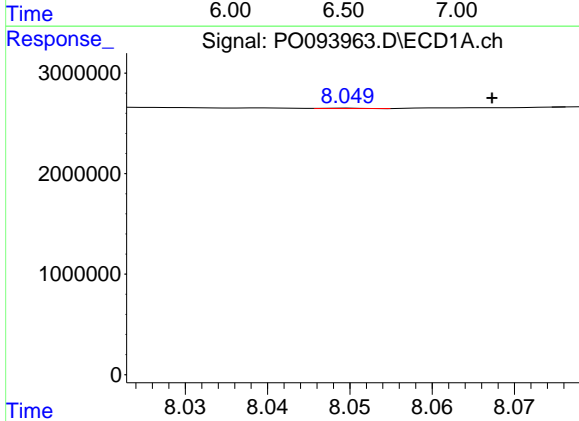
R.T.: 7.847 min  
 Delta R.T.: 0.008 min  
 Response: 211528  
 Conc: 1.59 ng/ml

Instrument :  
 ECD\_O  
 ClientSampleId :



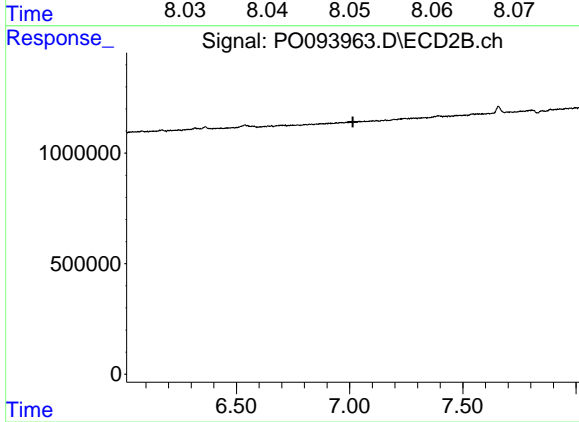
#33 AR-1260-3

R.T.: 0.000 min  
 Exp R.T. : 6.540 min  
 Response: 0  
 Conc: N.D.



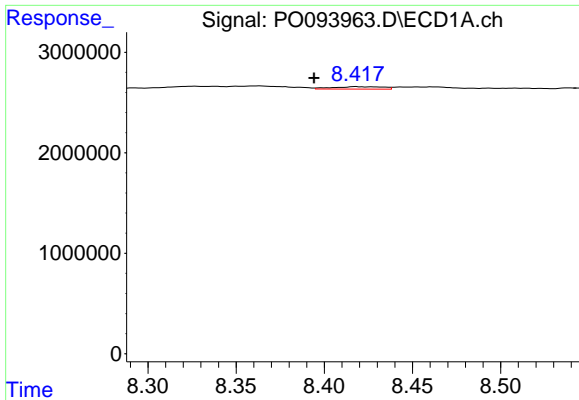
#34 AR-1260-4

R.T.: 8.050 min  
 Delta R.T.: -0.017 min  
 Response: 13392  
 Conc: 0.10 ng/ml



#34 AR-1260-4

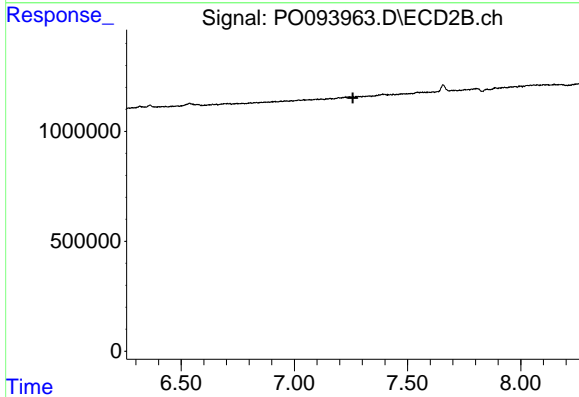
R.T.: 0.000 min  
 Exp R.T. : 7.014 min  
 Response: 0  
 Conc: N.D.



#35 AR-1260-5

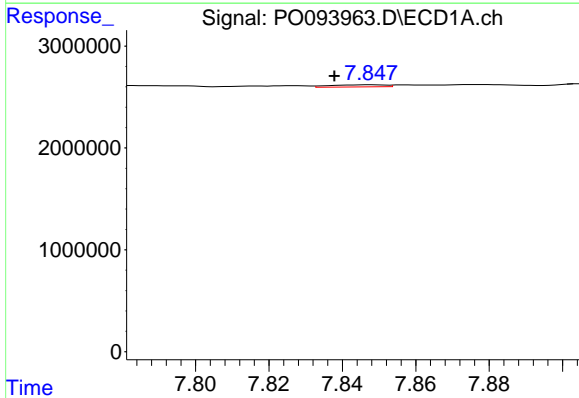
R.T.: 8.418 min  
 Delta R.T.: 0.024 min  
 Response: 475040  
 Conc: 2.18 ng/ml

Instrument :  
 ECD\_O  
 ClientSampleId :



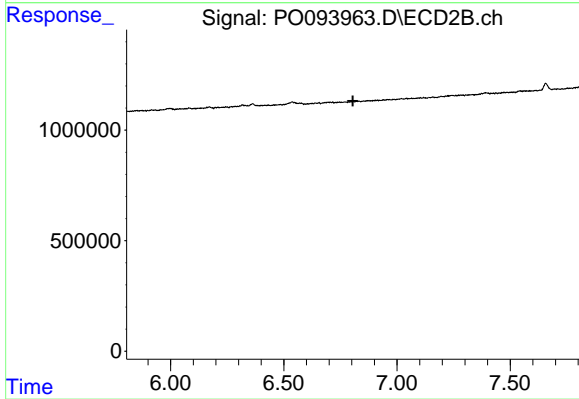
#35 AR-1260-5

R.T.: 0.000 min  
 Exp R.T. : 7.258 min  
 Response: 0  
 Conc: N.D.



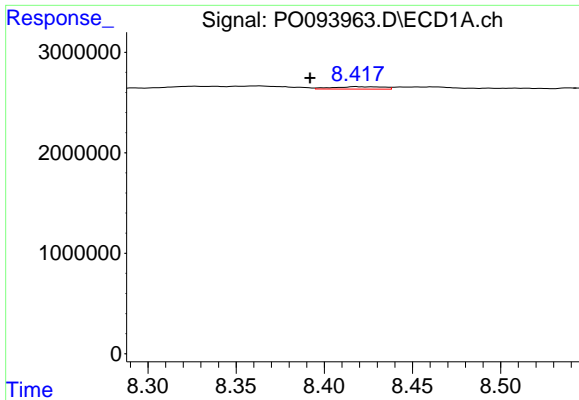
#36 AR-1262-1

R.T.: 7.847 min  
 Delta R.T.: 0.010 min  
 Response: 211528  
 Conc: 1.24 ng/ml



#36 AR-1262-1

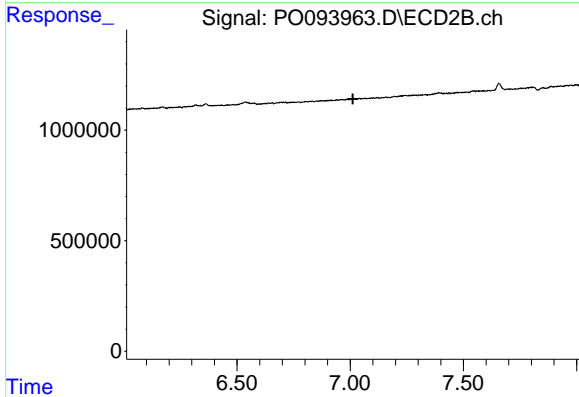
R.T.: 0.000 min  
 Exp R.T. : 6.805 min  
 Response: 0  
 Conc: N.D.



#37 AR-1262-2

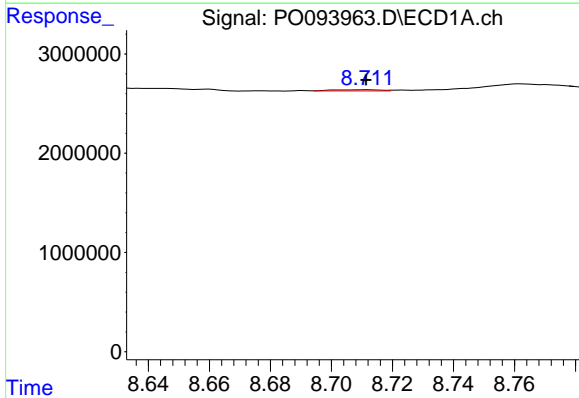
R.T.: 8.418 min  
 Delta R.T.: 0.026 min  
 Response: 475040  
 Conc: 2.04 ng/ml

Instrument :  
 ECD\_O  
 ClientSampleId :



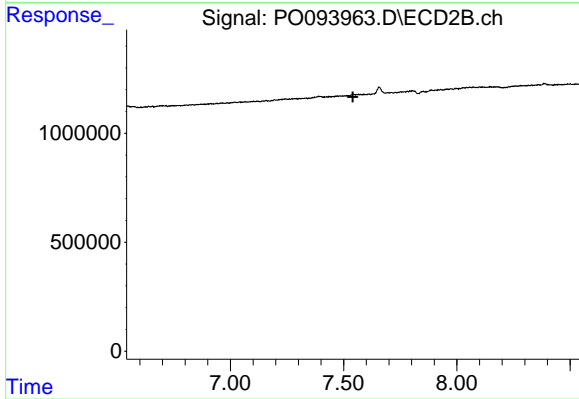
#37 AR-1262-2

R.T.: 0.000 min  
 Exp R.T. : 7.012 min  
 Response: 0  
 Conc: N.D.



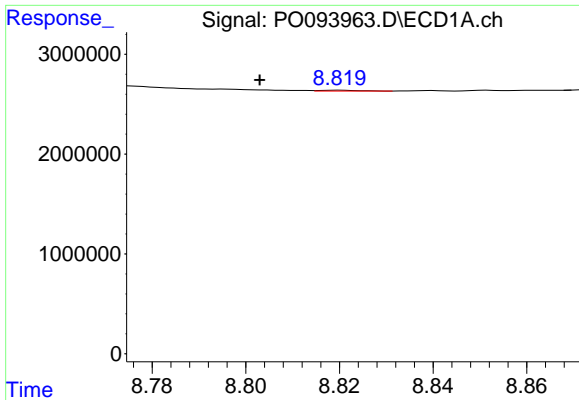
#38 AR-1262-3

R.T.: 8.711 min  
 Delta R.T.: 0.000 min  
 Response: 128990  
 Conc: 0.79 ng/ml



#38 AR-1262-3

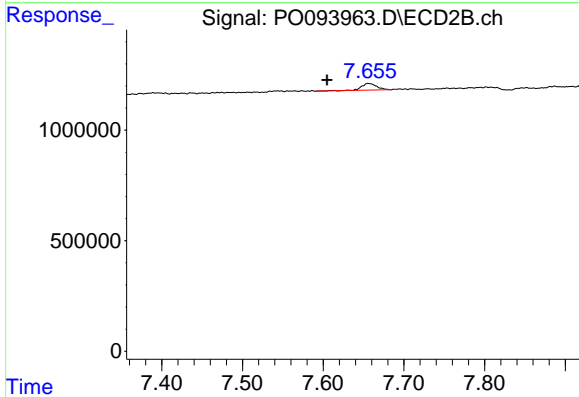
R.T.: 0.000 min  
 Exp R.T. : 7.541 min  
 Response: 0  
 Conc: N.D.



#39 AR-1262-4

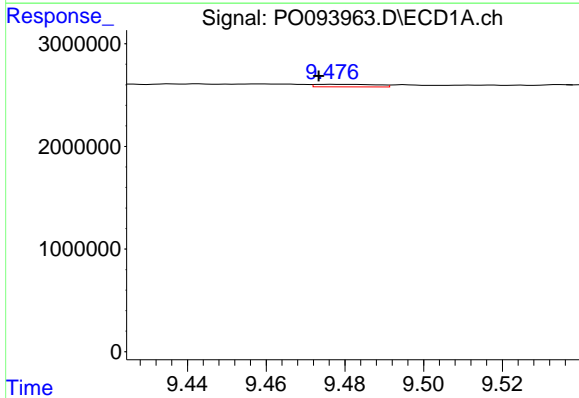
R.T.: 8.820 min  
 Delta R.T.: 0.017 min  
 Response: 50668  
 Conc: 0.51 ng/ml

Instrument :  
 ECD\_O  
 ClientSampleId :



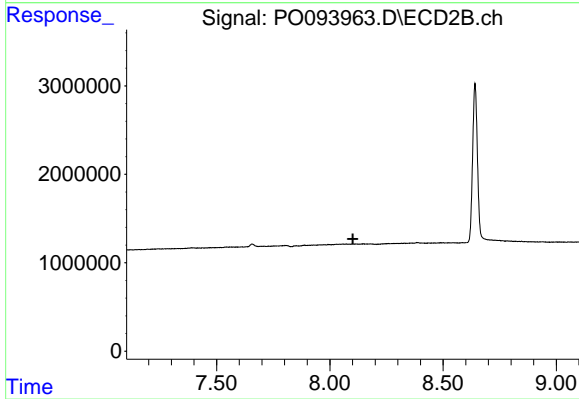
#39 AR-1262-4

R.T.: 7.656 min  
 Delta R.T.: 0.051 min  
 Response: 392445  
 Conc: 4.73 ng/ml



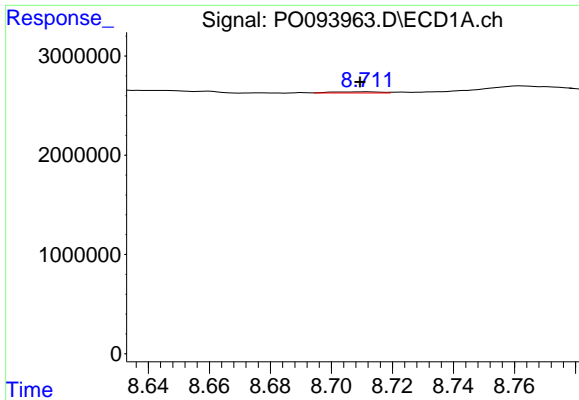
#40 AR-1262-5

R.T.: 9.477 min  
 Delta R.T.: 0.003 min  
 Response: 270988  
 Conc: 3.37 ng/ml



#40 AR-1262-5

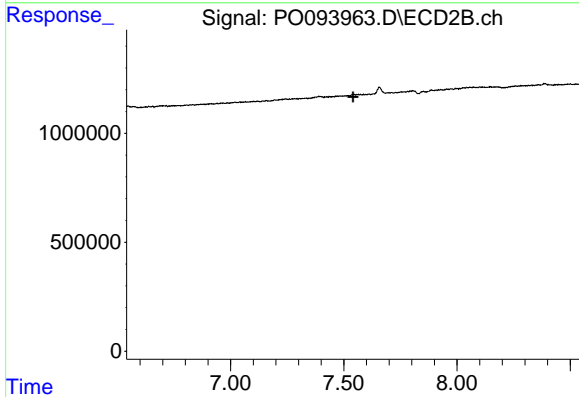
R.T.: 0.000 min  
 Exp R.T. : 8.102 min  
 Response: 0  
 Conc: N.D.



#41 AR-1268-1

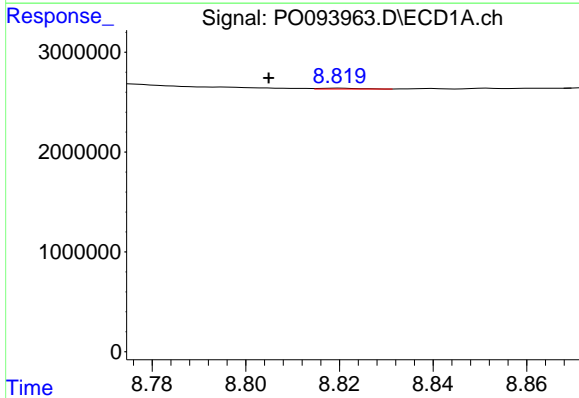
R.T.: 8.711 min  
 Delta R.T.: 0.002 min  
 Response: 128990  
 Conc: 0.38 ng/ml

Instrument :  
 ECD\_O  
 ClientSampleId :



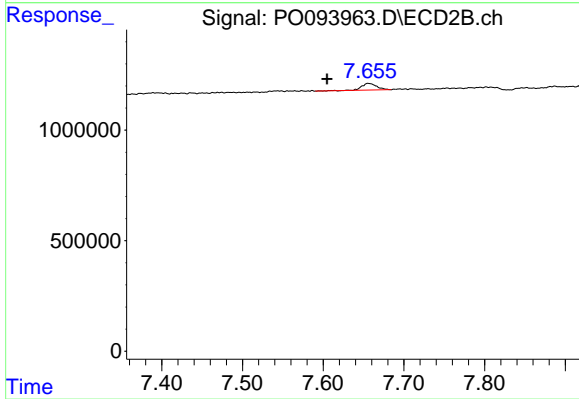
#41 AR-1268-1

R.T.: 0.000 min  
 Exp R.T. : 7.540 min  
 Response: 0  
 Conc: N.D.



#42 AR-1268-2

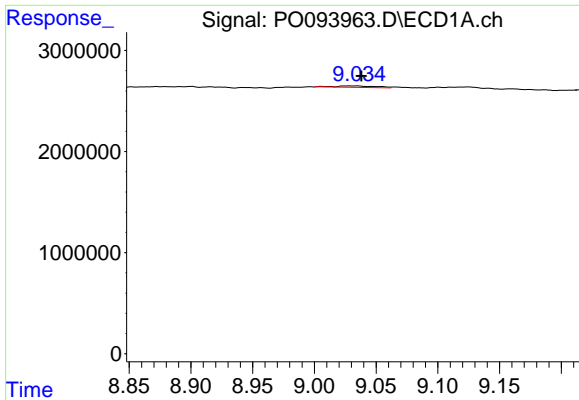
R.T.: 8.820 min  
 Delta R.T.: 0.015 min  
 Response: 50668  
 Conc: 0.16 ng/ml



#42 AR-1268-2

R.T.: 7.656 min  
 Delta R.T.: 0.051 min  
 Response: 392445  
 Conc: 2.89 ng/ml

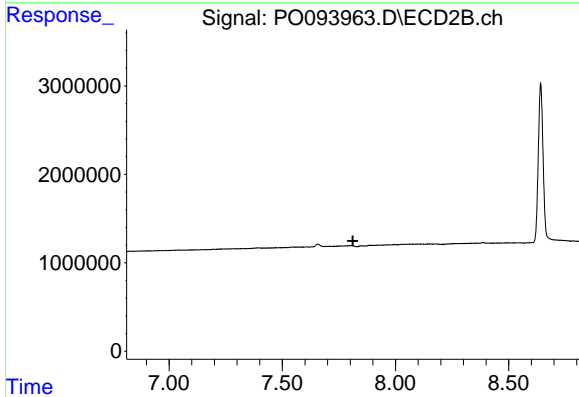




#43 AR-1268-3

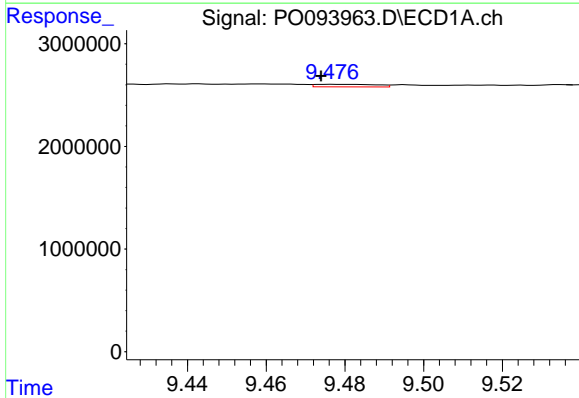
R.T.: 9.034 min  
 Delta R.T.: -0.004 min  
 Response: 316473  
 Conc: 1.12 ng/ml

Instrument :  
 ECD\_O  
 ClientSampleId :



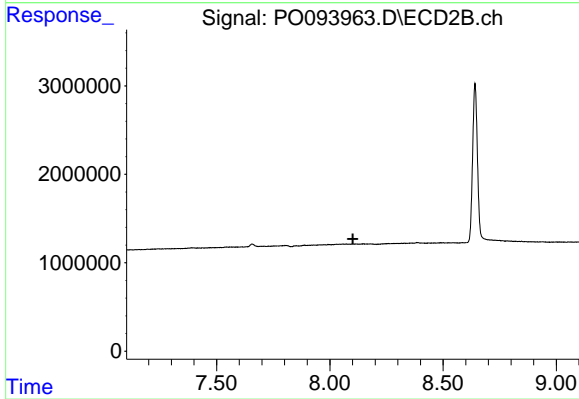
#43 AR-1268-3

R.T.: 0.000 min  
 Exp R.T. : 7.812 min  
 Response: 0  
 Conc: N.D.



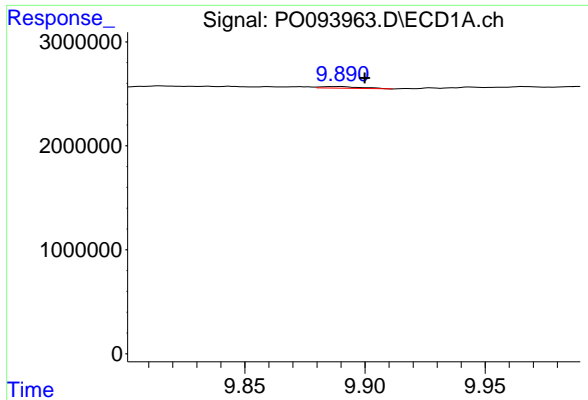
#44 AR-1268-4

R.T.: 9.477 min  
 Delta R.T.: 0.003 min  
 Response: 270988  
 Conc: 2.80 ng/ml



#44 AR-1268-4

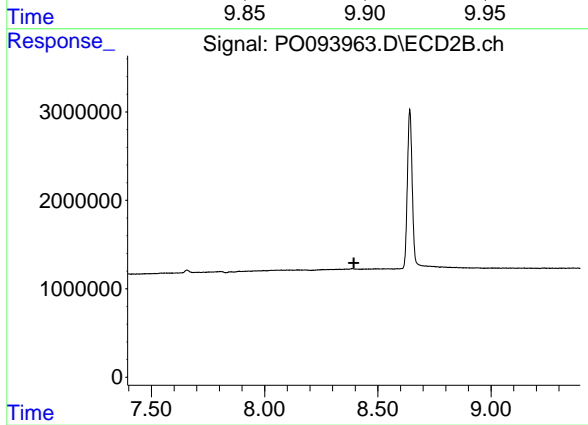
R.T.: 0.000 min  
 Exp R.T. : 8.102 min  
 Response: 0  
 Conc: N.D.



#45 AR-1268-5

R.T.: 9.890 min  
 Delta R.T.: -0.010 min  
 Response: 183349  
 Conc: 0.22 ng/ml

Instrument :  
 ECD\_O  
 ClientSampleId :



#45 AR-1268-5

R.T.: 0.000 min  
 Exp R.T. : 8.394 min  
 Response: 0  
 Conc: N.D.