

Data Path : Z:\pestpcbsrv\HPCHEM1\ECD_O\Data\P0040723\
 Data File : P0093992.D
 Signal(s) : Signal #1: ECD1A.ch Signal #2: ECD2B.ch
 Acq On : 08 Apr 2023 09:37
 Operator : YP/AJ
 Sample : 02213-03
 Misc : AR1268 MDL 25 PPB
 ALS Vial : 57 Sample Multiplier: 1

Instrument :
 ECD_O
 ClientSampleId :

Integration File signal 1: autoint1.e
 Integration File signal 2: autoint2.e
 Quant Time: Apr 08 13:31:25 2023
 Quant Method : Z:\pestpcbsrv\HPCHEM1\ECD_O\methods\P0040323.M
 Quant Title : GC EXTRACTABLES
 QLast Update : Tue Apr 04 06:20:55 2023
 Response via : Initial Calibration
 Integrator: ChemStation

Volume Inj. : 2 µl
 Signal #1 Phase : ZB-MR2 Signal #2 Phase: ZB-MR2
 Signal #1 Info : 30Mx0.32mmx 0.50µ Signal #2 Info : 30M x 0.32mm x 0.25µm

Compound	RT#1	RT#2	Resp#1	Resp#2	ng/ml	ng/ml
----------	------	------	--------	--------	-------	-------

System Monitoring Compounds

1) SA Tetrachlo...	4.419	3.623	76793417	28306696	20.543	22.229
2) SA Decachlor...	10.240	8.641	64239726	29432516	28.718	29.439

Target Compounds

3) L1 AR-1016-1	5.601	0.000	226368	0	2.214	N.D. #
4) L1 AR-1016-2	5.617	0.000	195279	0	1.253	N.D. #
5) L1 AR-1016-3	5.674	0.000	598197	0	6.065	N.D. #
6) L1 AR-1016-4	5.769	0.000	24400	0	0.332	N.D. #
7) L1 AR-1016-5	6.090	0.000	294109	0	3.474	N.D. #
8) L2 AR-1221-1	4.625	0.000	157249	0	3.410	N.D. #
9) L2 AR-1221-2	4.726	3.922	1015031	366076	29.570	31.017
10) L2 AR-1221-3	4.785	0.000	63069	0	0.602	N.D. #
11) L3 AR-1232-1	4.785	0.000	63069	0	0.723	N.D. #
12) L3 AR-1232-2	5.317	0.000	59622	0	1.394	N.D. #
13) L3 AR-1232-3	5.617	0.000	195279	0	2.658	N.D. #
14) L3 AR-1232-4	5.769	0.000	24400	0	0.709	N.D. #
15) L3 AR-1232-5	5.881	0.000	41574	0	1.309	N.D. #
16) L4 AR-1242-1	5.601	0.000	226368	0	2.593	N.D. #
17) L4 AR-1242-2	5.617	0.000	195279	0	1.469	N.D. #
18) L4 AR-1242-3	5.674	0.000	598197	0	7.047	N.D. #
19) L4 AR-1242-4	5.769	0.000	24400	0	0.391	N.D. #
20) L4 AR-1242-5	6.516	0.000	180568	0	2.682	N.D. #
21) L5 AR-1248-1	5.601	0.000	226368	0	3.364	N.D. #
22) L5 AR-1248-2	5.867	0.000	66903	0	0.612	N.D. #
23) L5 AR-1248-3	6.090	0.000	294109	0	2.436	N.D. #
24) L5 AR-1248-4	6.485	0.000	338355	0	3.151	N.D. #
25) L5 AR-1248-5	6.516	0.000	180568	0	1.556	N.D. #
26) L6 AR-1254-1	6.457	0.000	123565	0	0.911	N.D. #
27) L6 AR-1254-2	6.683	0.000	71432	0	0.365	N.D. #
28) L6 AR-1254-3	7.045	0.000	303619	0	1.643	N.D. #
30) L6 AR-1254-5	7.771	6.747	1421058	1039380	10.479	14.405 #
31) L7 AR-1260-1	7.205	0.000	8196	0	0.056	N.D. #
32) L7 AR-1260-2	7.493	0.000	555282	0	3.469	N.D. #
33) L7 AR-1260-3	7.835	0.000	2276347	0	17.144	N.D. #
34) L7 AR-1260-4	8.082	7.003	4031562	1567006	29.269	28.218
35) L7 AR-1260-5	8.386	7.250	1348988	488994	6.194	4.712
36) L8 AR-1262-1	7.835	6.747f	2276347	1039380	13.326	29.707 #
37) L8 AR-1262-2	8.386	7.003	1348988	1567006	5.803	22.179 #
38) L8 AR-1262-3	8.704	7.535	11088856	5657852	67.695	113.082 #
39) L8 AR-1262-4	8.800	7.599	11357381	4835937	113.354	58.313 #
40) L8 AR-1262-5	9.467	8.095	3880554	1362942	48.214	41.897
41) L9 AR-1268-1	8.704	7.535	11088856	5657852	32.948	37.037
42) L9 AR-1268-2	8.800	7.599	11357381	4835937	35.289	35.594

Data Path : Z:\pestpcbsrv\HPCHEM1\ECD_0\Data\P0040723\
 Data File : P0093992.D
 Signal(s) : Signal #1: ECD1A.ch Signal #2: ECD2B.ch
 Acq On : 08 Apr 2023 09:37
 Operator : YP/AJ
 Sample : 02213-03
 Misc : AR1268 MDL 25 PPB
 ALS Vial : 57 Sample Multiplier: 1

Instrument :
 ECD_0
 ClientSampleId :

Integration File signal 1: autoint1.e
 Integration File signal 2: autoint2.e
 Quant Time: Apr 08 13:31:25 2023
 Quant Method : Z:\pestpcbsrv\HPCHEM1\ECD_0\methods\P0040323.M
 Quant Title : GC EXTRACTABLES
 QLast Update : Tue Apr 04 06:20:55 2023
 Response via : Initial Calibration
 Integrator: ChemStation

Volume Inj. : 2 µl
 Signal #1 Phase : ZB-MR1 Signal #2 Phase: ZB-MR2
 Signal #1 Info : 30Mx0.32mmx 0.50µ Signal #2 Info : 30M x 0.32mm x 0.25µm

	Compound	RT#1	RT#2	Resp#1	Resp#2	ng/ml	ng/ml
43)	L9 AR-1268-3	9.032	7.806	9380408	4384748	33.079	33.502
44)	L9 AR-1268-4	9.467	8.095	3880554	1362942	40.135	34.432
45)	L9 AR-1268-5	9.891	8.387	26770373	12475344	31.874	35.595

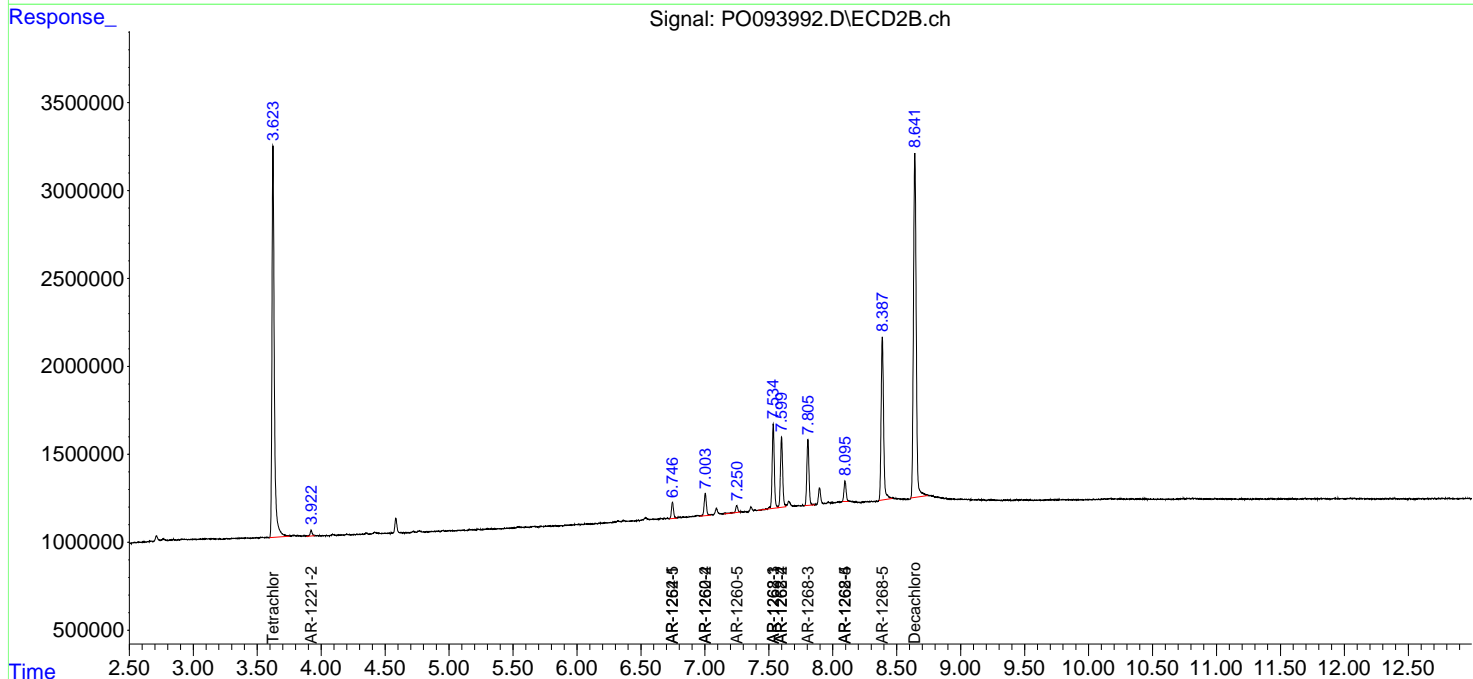
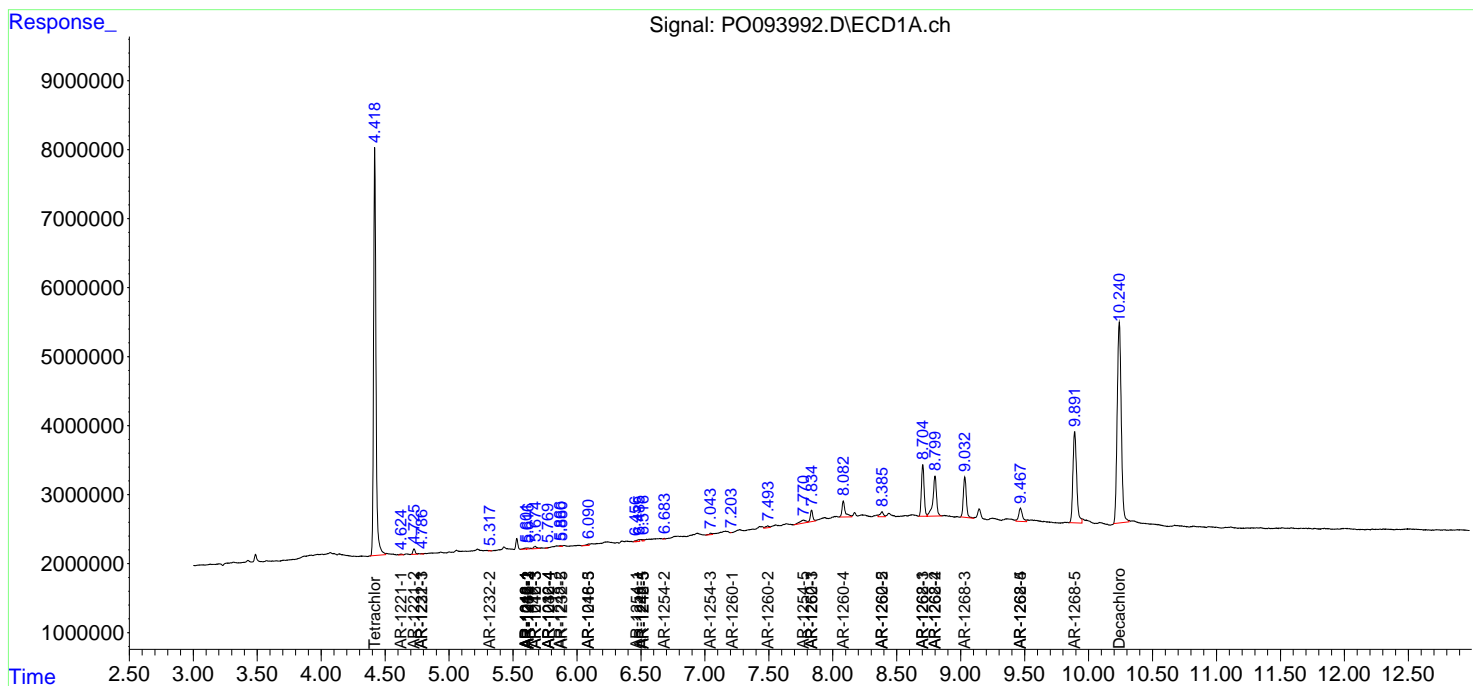
(f)=RT Delta > 1/2 Window (#)=Amounts differ by > 25% (m)=manual int.

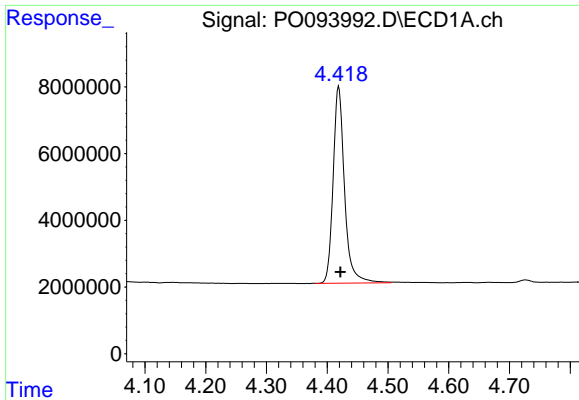
Data Path : Z:\pestpcbsrv\HPCHEM1\ECD_O\Data\P0040723\
 Data File : P0093992.D
 Signal(s) : Signal #1: ECD1A.ch Signal #2: ECD2B.ch
 Acq On : 08 Apr 2023 09:37
 Operator : YP/AJ
 Sample : 02213-03
 Misc : AR1268 MDL 25 PPB
 ALS Vial : 57 Sample Multiplier: 1

Instrument :
 ECD_O
 ClientSampleId :

Integration File signal 1: autoint1.e
 Integration File signal 2: autoint2.e
 Quant Time: Apr 08 13:31:25 2023
 Quant Method : Z:\pestpcbsrv\HPCHEM1\ECD_O\methods\P0040323.M
 Quant Title : GC EXTRACTABLES
 QLast Update : Tue Apr 04 06:20:55 2023
 Response via : Initial Calibration
 Integrator: ChemStation

Volume Inj. : 2 µl
 Signal #1 Phase : ZB-MR1 Signal #2 Phase: ZB-MR2
 Signal #1 Info : 30Mx0.32mmx 0.50µ Signal #2 Info : 30M x 0.32mm x 0.25µm

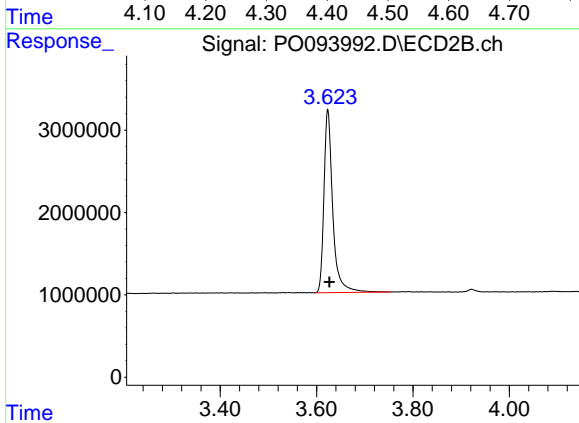




#1 Tetrachloro-m-xylene

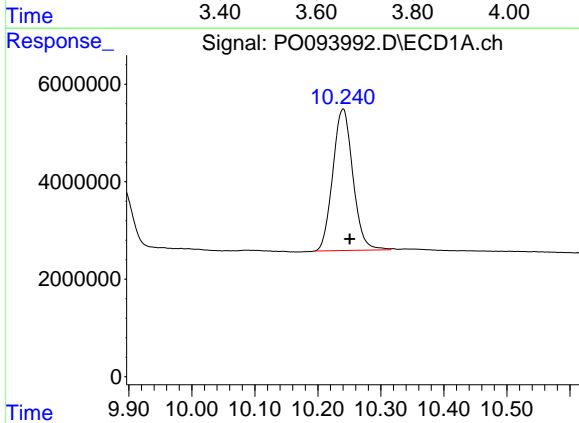
R.T.: 4.419 min
 Delta R.T.: -0.003 min
 Response: 76793417
 Conc: 20.54 ng/ml

Instrument :
 ECD_O
 ClientSampleId :



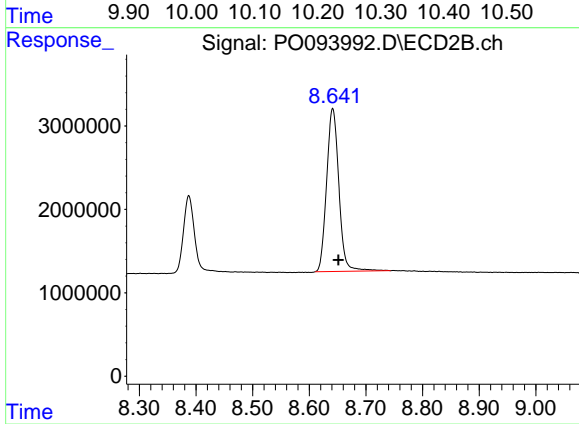
#1 Tetrachloro-m-xylene

R.T.: 3.623 min
 Delta R.T.: -0.003 min
 Response: 28306696
 Conc: 22.23 ng/ml



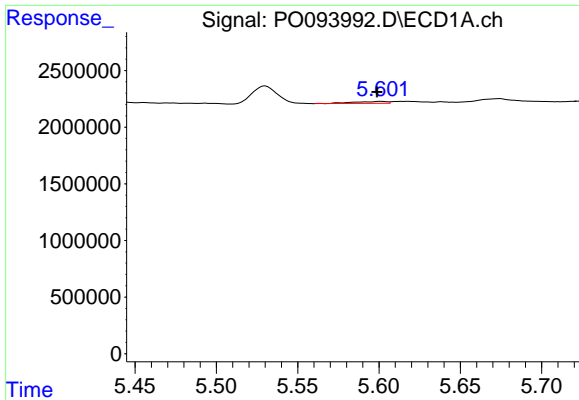
#2 Decachlorobiphenyl

R.T.: 10.240 min
 Delta R.T.: -0.010 min
 Response: 64239726
 Conc: 28.72 ng/ml



#2 Decachlorobiphenyl

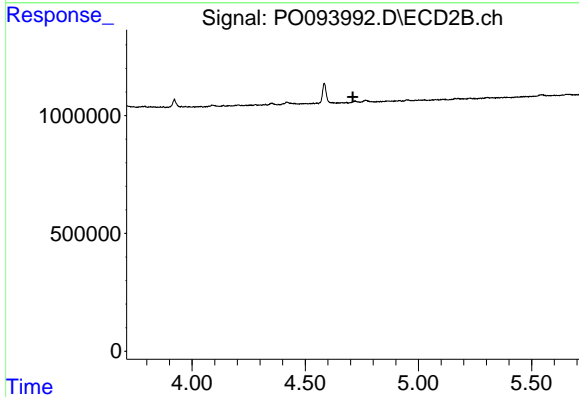
R.T.: 8.641 min
 Delta R.T.: -0.010 min
 Response: 29432516
 Conc: 29.44 ng/ml



#3 AR-1016-1

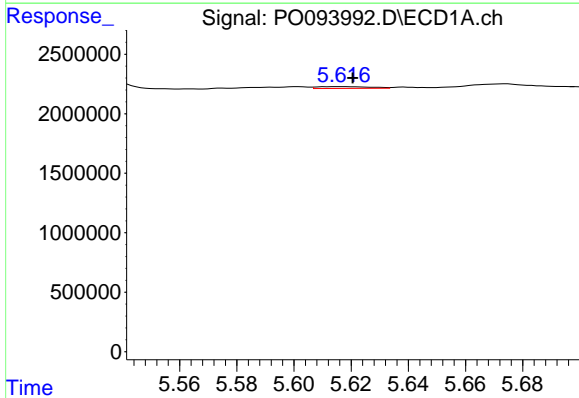
R.T.: 5.601 min
 Delta R.T.: 0.002 min
 Response: 226368
 Conc: 2.21 ng/ml

Instrument :
 ECD_O
 ClientSampleId :



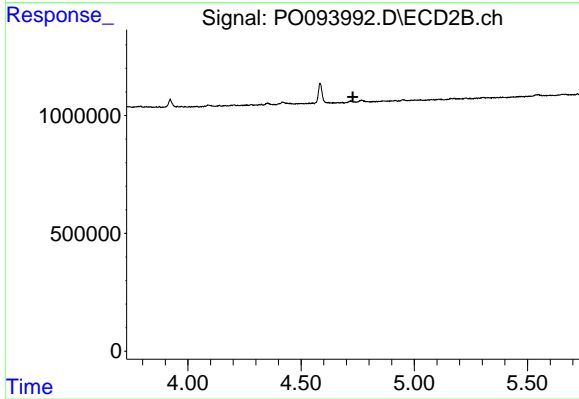
#3 AR-1016-1

R.T.: 0.000 min
 Exp R.T. : 4.710 min
 Response: 0
 Conc: N.D.



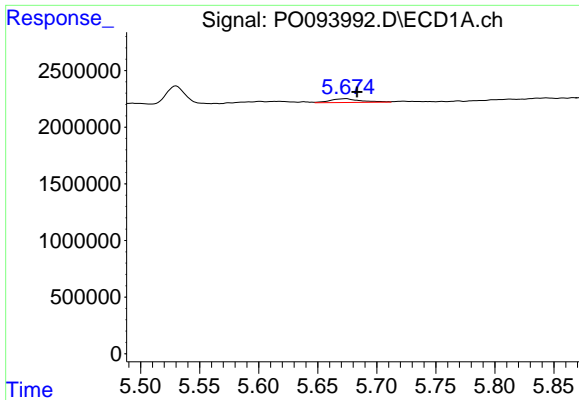
#4 AR-1016-2

R.T.: 5.617 min
 Delta R.T.: -0.003 min
 Response: 195279
 Conc: 1.25 ng/ml



#4 AR-1016-2

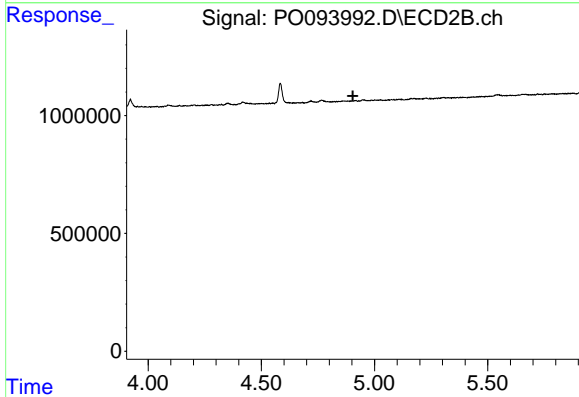
R.T.: 0.000 min
 Exp R.T. : 4.729 min
 Response: 0
 Conc: N.D.



#5 AR-1016-3

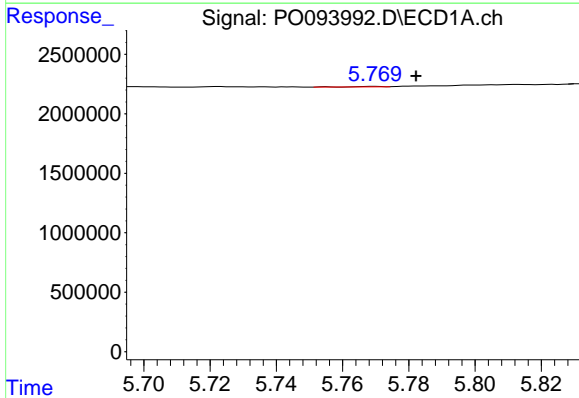
R.T.: 5.674 min
 Delta R.T.: -0.009 min
 Response: 598197
 Conc: 6.06 ng/ml

Instrument :
 ECD_O
 ClientSampleId :



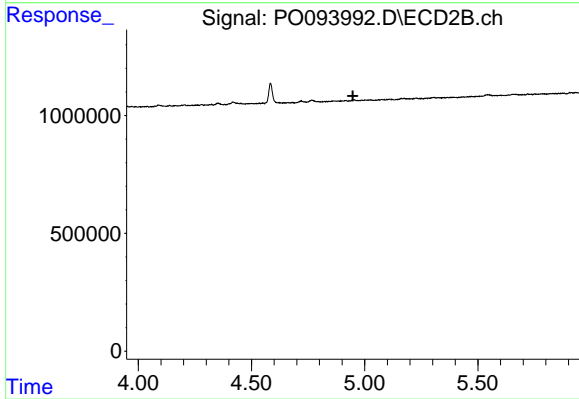
#5 AR-1016-3

R.T.: 0.000 min
 Exp R.T. : 4.905 min
 Response: 0
 Conc: N.D.



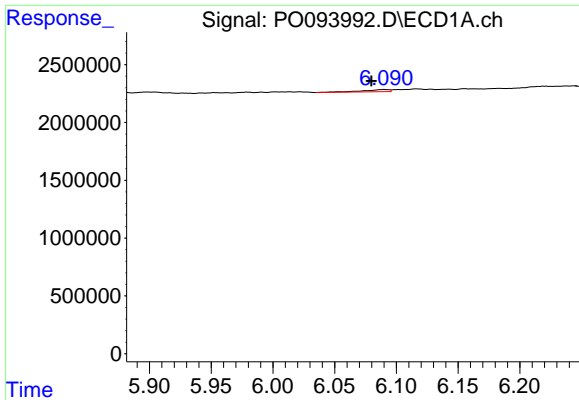
#6 AR-1016-4

R.T.: 5.769 min
 Delta R.T.: -0.013 min
 Response: 24400
 Conc: 0.33 ng/ml



#6 AR-1016-4

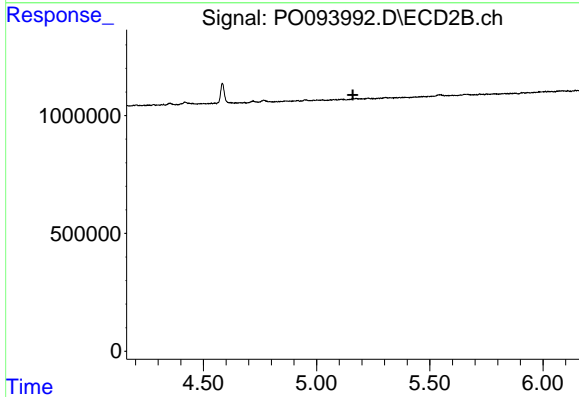
R.T.: 0.000 min
 Exp R.T. : 4.948 min
 Response: 0
 Conc: N.D.



#7 AR-1016-5

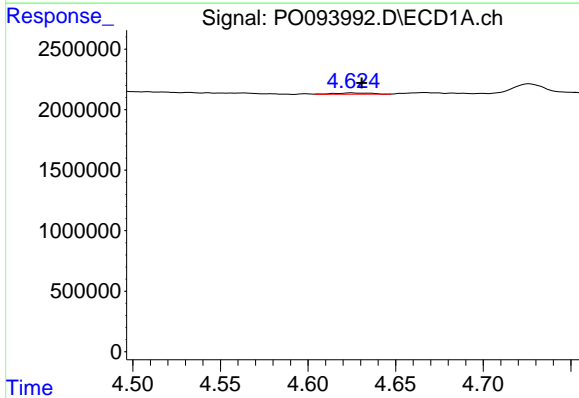
R.T.: 6.090 min
 Delta R.T.: 0.010 min
 Response: 294109
 Conc: 3.47 ng/ml

Instrument :
 ECD_O
 ClientSampleId :



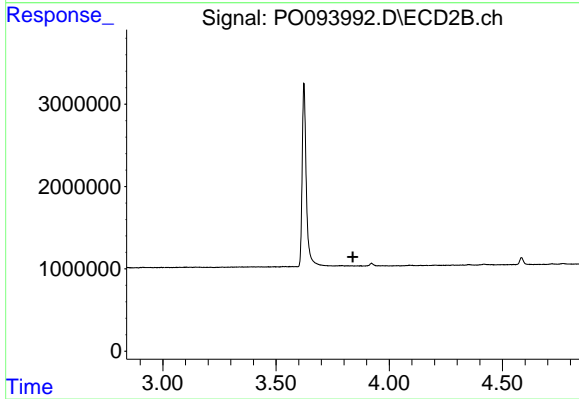
#7 AR-1016-5

R.T.: 0.000 min
 Exp R.T. : 5.161 min
 Response: 0
 Conc: N.D.



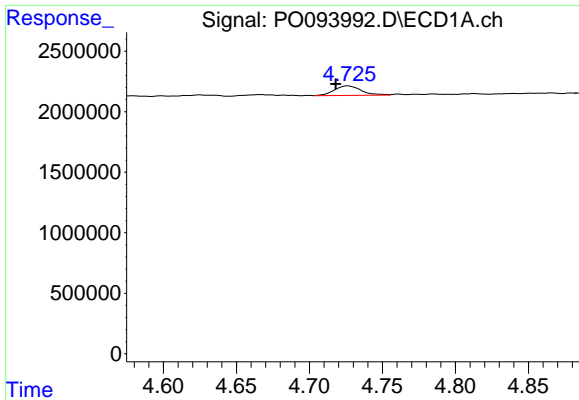
#8 AR-1221-1

R.T.: 4.625 min
 Delta R.T.: -0.006 min
 Response: 157249
 Conc: 3.41 ng/ml



#8 AR-1221-1

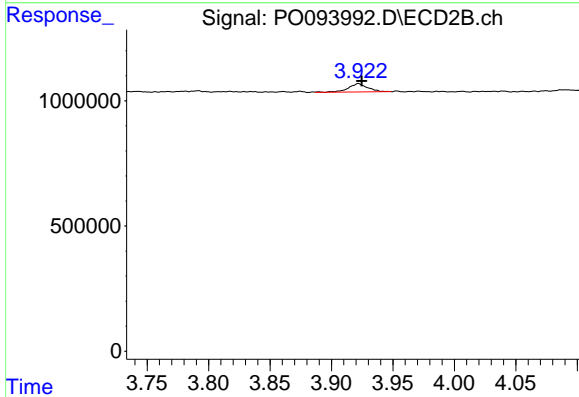
R.T.: 0.000 min
 Exp R.T. : 3.840 min
 Response: 0
 Conc: N.D.



#9 AR-1221-2

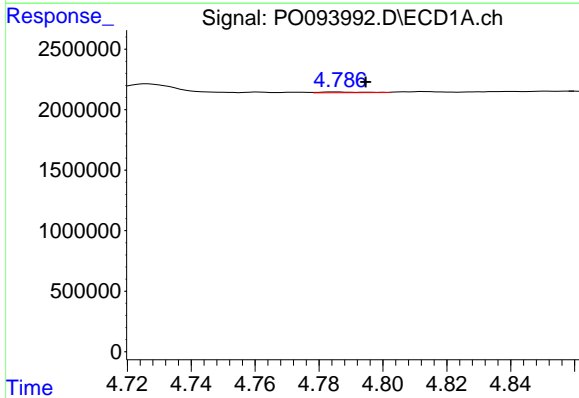
R.T.: 4.726 min
 Delta R.T.: 0.008 min
 Response: 1015031
 Conc: 29.57 ng/ml

Instrument :
 ECD_O
 ClientSampleId :



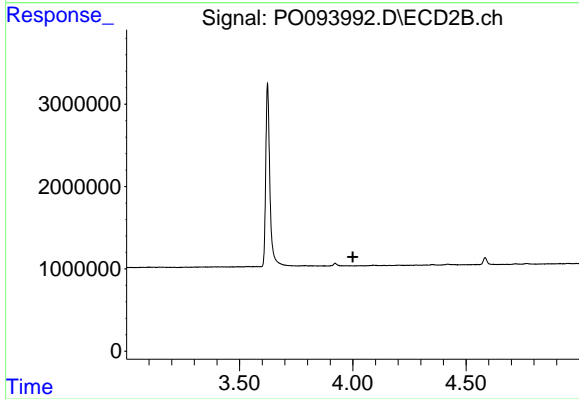
#9 AR-1221-2

R.T.: 3.922 min
 Delta R.T.: -0.003 min
 Response: 366076
 Conc: 31.02 ng/ml



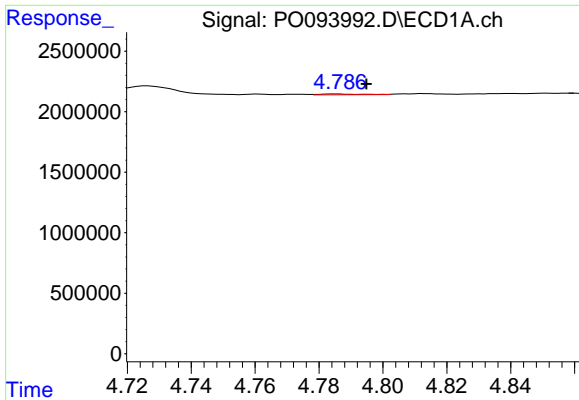
#10 AR-1221-3

R.T.: 4.785 min
 Delta R.T.: -0.009 min
 Response: 63069
 Conc: 0.60 ng/ml



#10 AR-1221-3

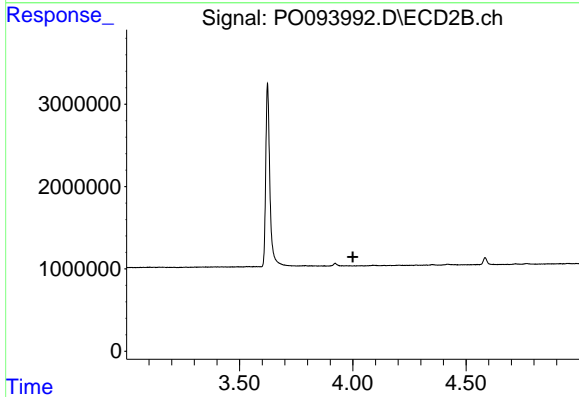
R.T.: 0.000 min
 Exp R.T. : 4.000 min
 Response: 0
 Conc: N.D.



#11 AR-1232-1

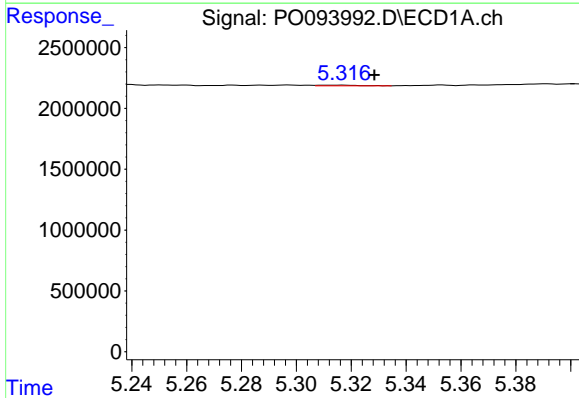
R.T.: 4.785 min
 Delta R.T.: -0.010 min
 Response: 63069
 Conc: 0.72 ng/ml

Instrument :
 ECD_O
 ClientSampleId :



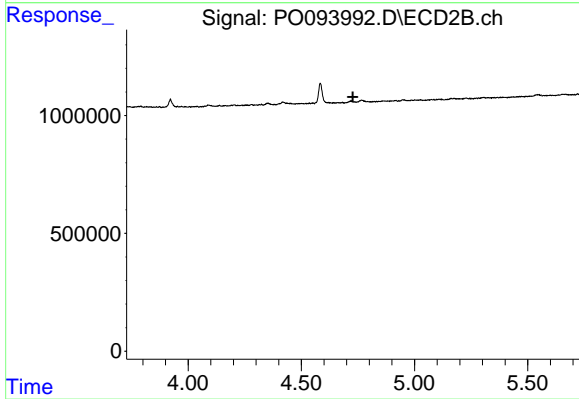
#11 AR-1232-1

R.T.: 0.000 min
 Exp R.T. : 4.000 min
 Response: 0
 Conc: N.D.



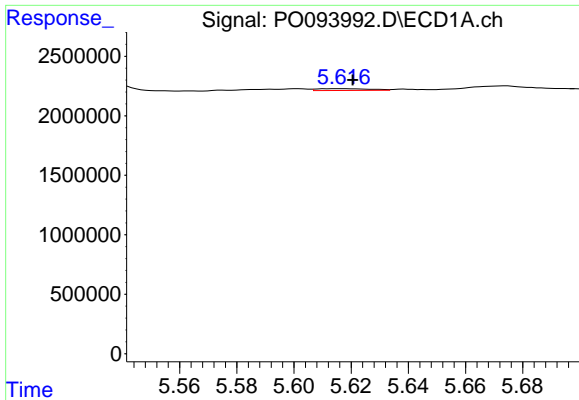
#12 AR-1232-2

R.T.: 5.317 min
 Delta R.T.: -0.011 min
 Response: 59622
 Conc: 1.39 ng/ml



#12 AR-1232-2

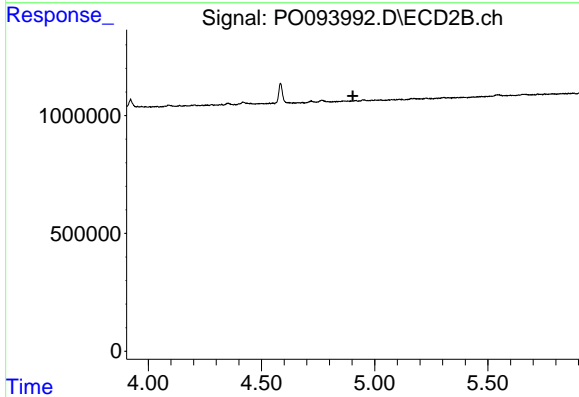
R.T.: 0.000 min
 Exp R.T. : 4.728 min
 Response: 0
 Conc: N.D.



#13 AR-1232-3

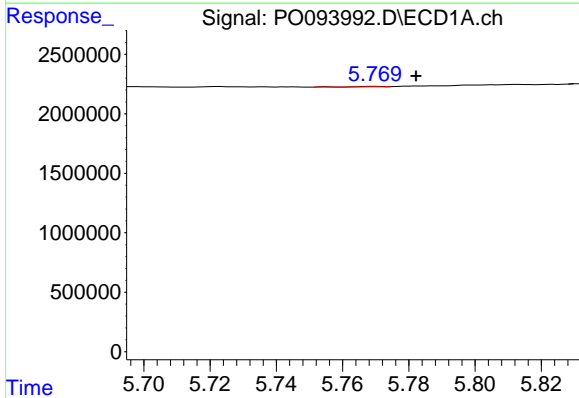
R.T.: 5.617 min
 Delta R.T.: -0.003 min
 Response: 195279
 Conc: 2.66 ng/ml

Instrument :
 ECD_O
 ClientSampleId :



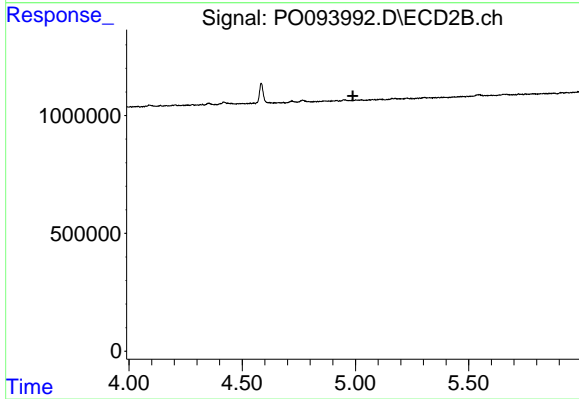
#13 AR-1232-3

R.T.: 0.000 min
 Exp R.T. : 4.904 min
 Response: 0
 Conc: N.D.



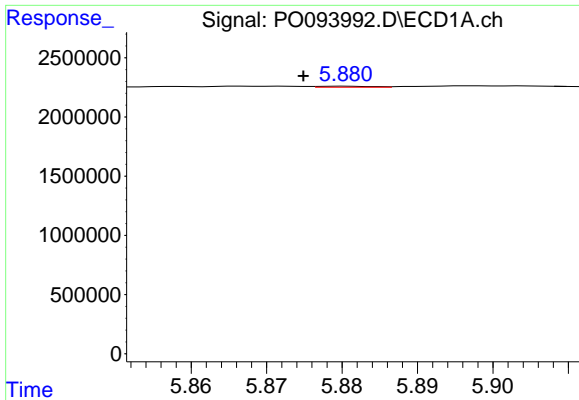
#14 AR-1232-4

R.T.: 5.769 min
 Delta R.T.: -0.013 min
 Response: 24400
 Conc: 0.71 ng/ml



#14 AR-1232-4

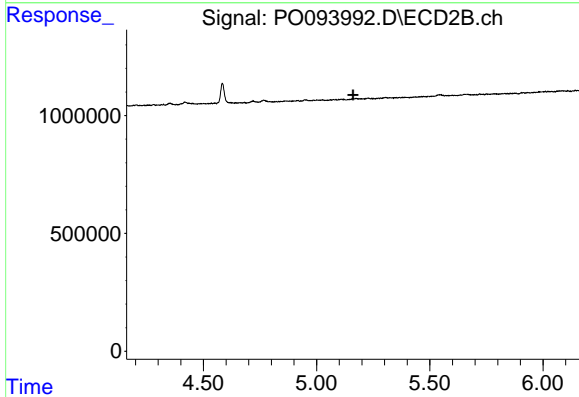
R.T.: 0.000 min
 Exp R.T. : 4.988 min
 Response: 0
 Conc: N.D.



#15 AR-1232-5

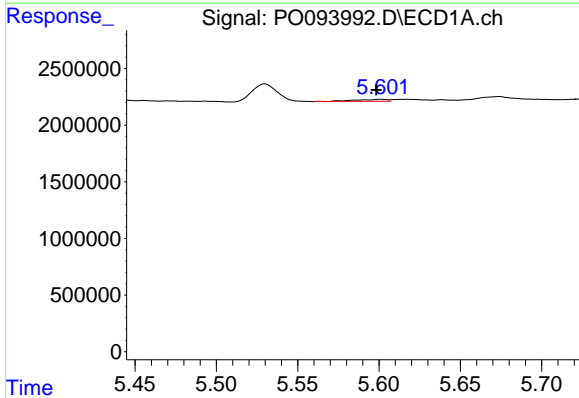
R.T.: 5.881 min
 Delta R.T.: 0.006 min
 Response: 41574
 Conc: 1.31 ng/ml

Instrument :
 ECD_O
 ClientSampleId :



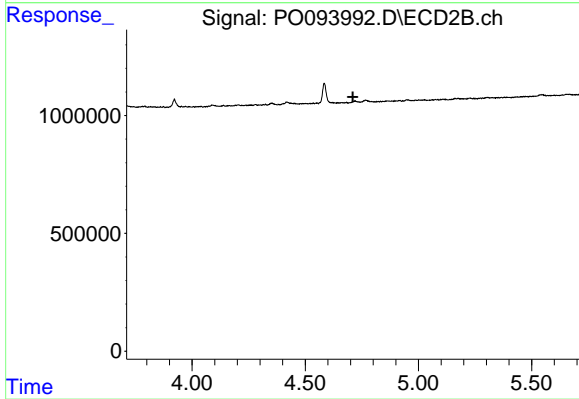
#15 AR-1232-5

R.T.: 0.000 min
 Exp R.T. : 5.161 min
 Response: 0
 Conc: N.D.



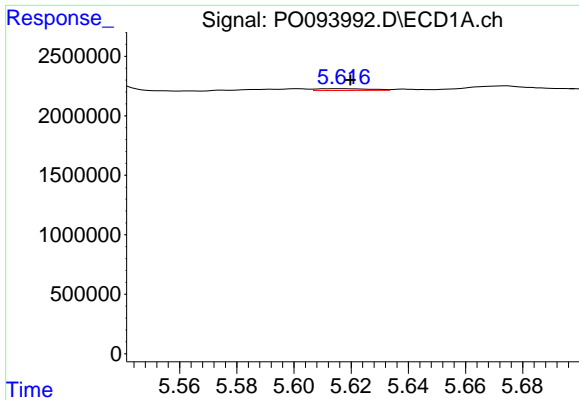
#16 AR-1242-1

R.T.: 5.601 min
 Delta R.T.: 0.003 min
 Response: 226368
 Conc: 2.59 ng/ml



#16 AR-1242-1

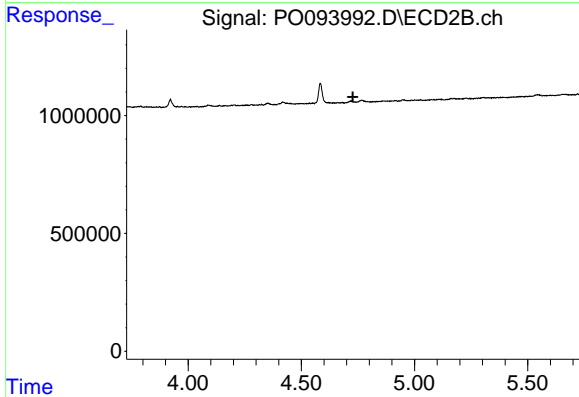
R.T.: 0.000 min
 Exp R.T. : 4.710 min
 Response: 0
 Conc: N.D.



#17 AR-1242-2

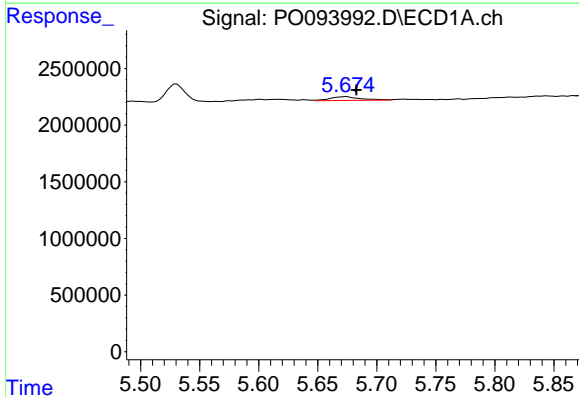
R.T.: 5.617 min
 Delta R.T.: -0.002 min
 Response: 195279
 Conc: 1.47 ng/ml

Instrument :
 ECD_O
 ClientSampleId :



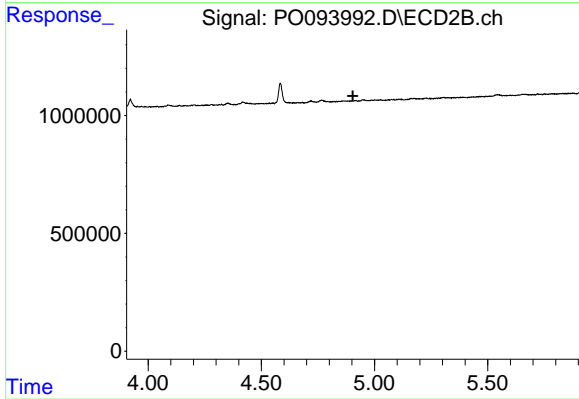
#17 AR-1242-2

R.T.: 0.000 min
 Exp R.T. : 4.728 min
 Response: 0
 Conc: N.D.



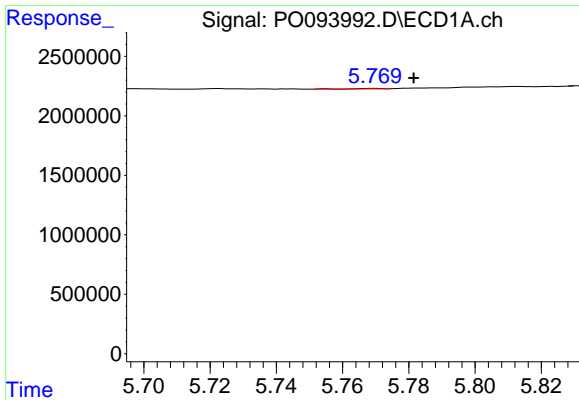
#18 AR-1242-3

R.T.: 5.674 min
 Delta R.T.: -0.009 min
 Response: 598197
 Conc: 7.05 ng/ml



#18 AR-1242-3

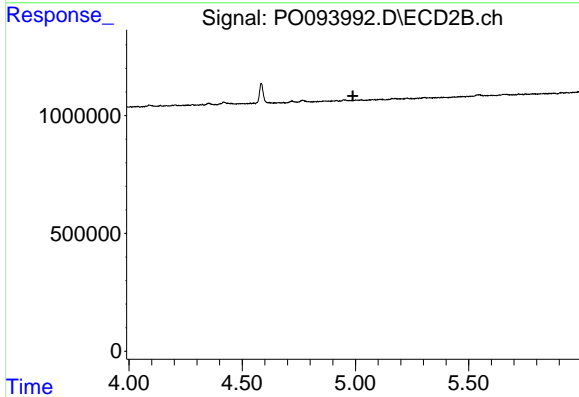
R.T.: 0.000 min
 Exp R.T. : 4.904 min
 Response: 0
 Conc: N.D.



#19 AR-1242-4

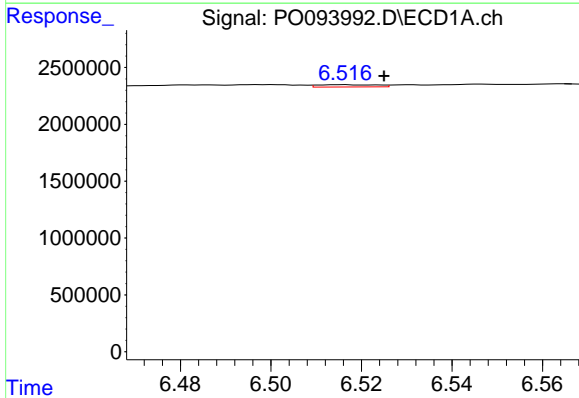
R.T.: 5.769 min
 Delta R.T.: -0.012 min
 Response: 24400
 Conc: 0.39 ng/ml

Instrument :
 ECD_O
 ClientSampleId :



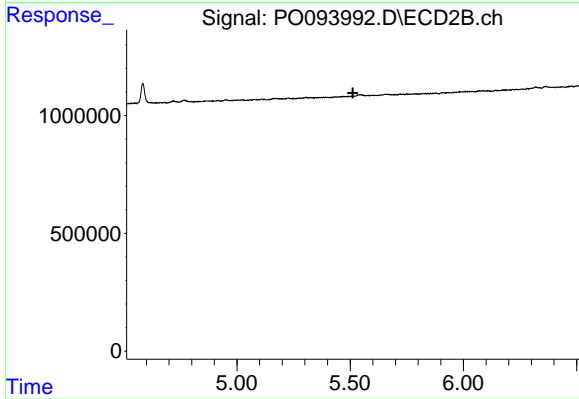
#19 AR-1242-4

R.T.: 0.000 min
 Exp R.T. : 4.988 min
 Response: 0
 Conc: N.D.



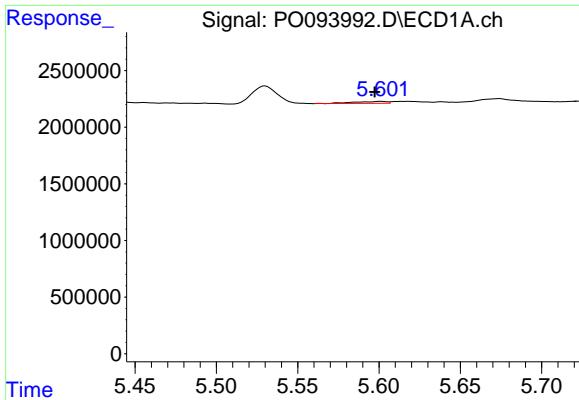
#20 AR-1242-5

R.T.: 6.516 min
 Delta R.T.: -0.009 min
 Response: 180568
 Conc: 2.68 ng/ml



#20 AR-1242-5

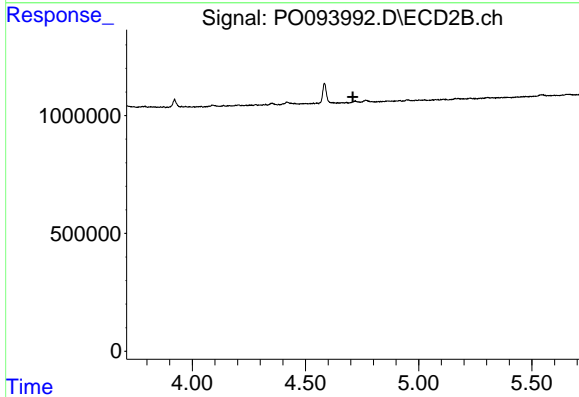
R.T.: 0.000 min
 Exp R.T. : 5.512 min
 Response: 0
 Conc: N.D.



#21 AR-1248-1

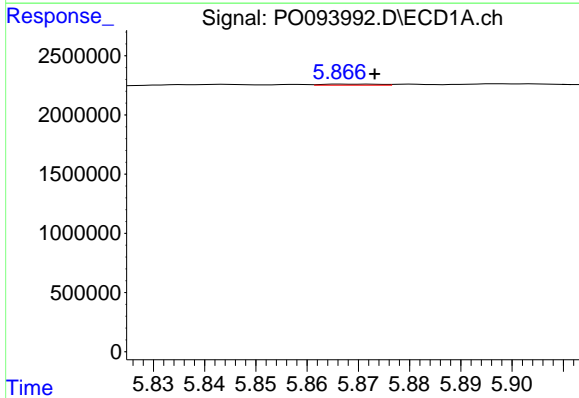
R.T.: 5.601 min
 Delta R.T.: 0.004 min
 Response: 226368
 Conc: 3.36 ng/ml

Instrument :
 ECD_O
 ClientSampleId :



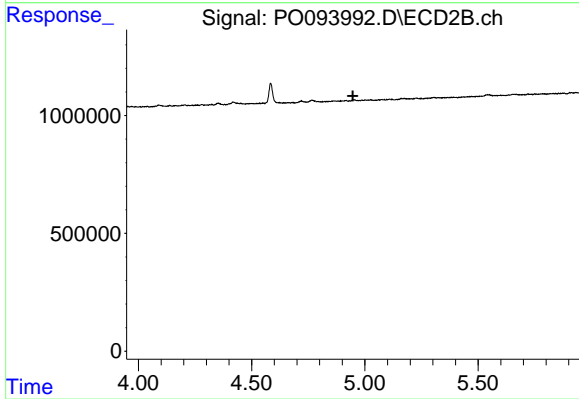
#21 AR-1248-1

R.T.: 0.000 min
 Exp R.T. : 4.710 min
 Response: 0
 Conc: N.D.



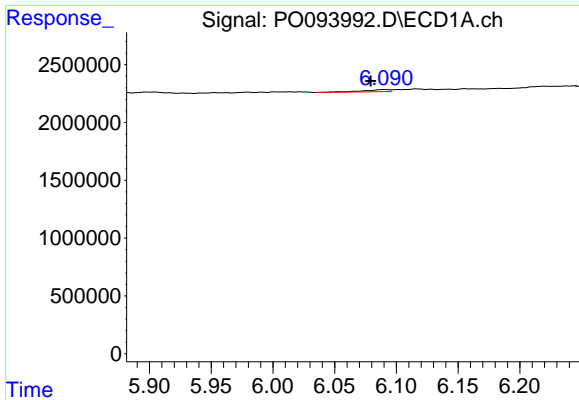
#22 AR-1248-2

R.T.: 5.867 min
 Delta R.T.: -0.006 min
 Response: 66903
 Conc: 0.61 ng/ml



#22 AR-1248-2

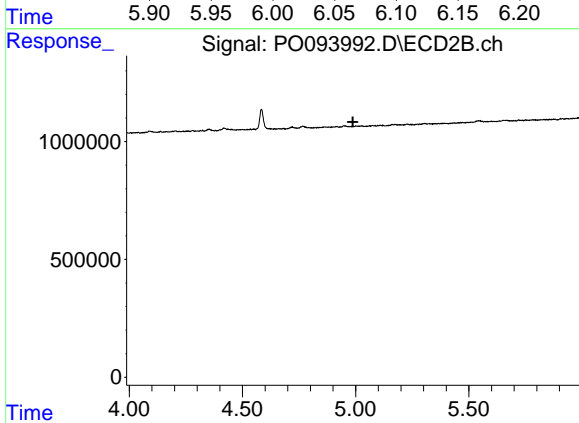
R.T.: 0.000 min
 Exp R.T. : 4.947 min
 Response: 0
 Conc: N.D.



#23 AR-1248-3

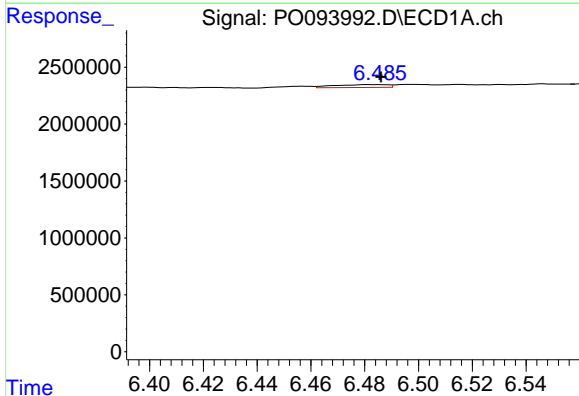
R.T.: 6.090 min
 Delta R.T.: 0.011 min
 Response: 294109
 Conc: 2.44 ng/ml

Instrument :
 ECD_O
 ClientSampleId :



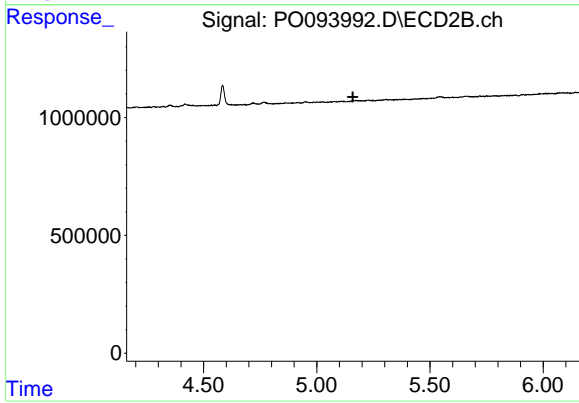
#23 AR-1248-3

R.T.: 0.000 min
 Exp R.T. : 4.988 min
 Response: 0
 Conc: N.D.



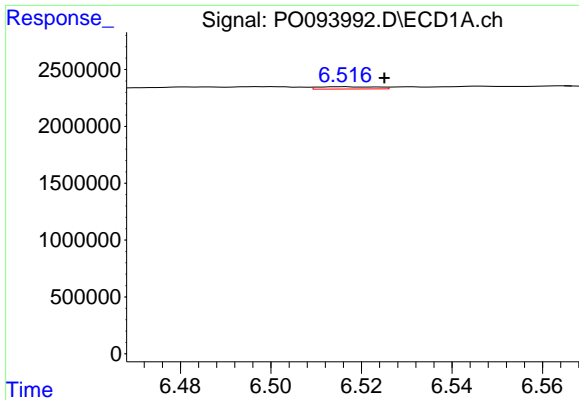
#24 AR-1248-4

R.T.: 6.485 min
 Delta R.T.: 0.000 min
 Response: 338355
 Conc: 3.15 ng/ml



#24 AR-1248-4

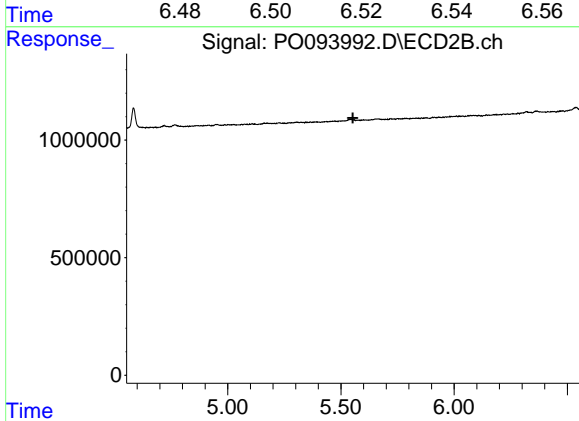
R.T.: 0.000 min
 Exp R.T. : 5.160 min
 Response: 0
 Conc: N.D.



#25 AR-1248-5

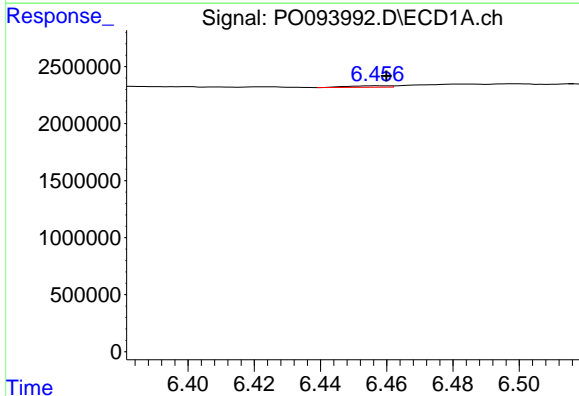
R.T.: 6.516 min
Delta R.T.: -0.009 min
Response: 180568
Conc: 1.56 ng/ml

Instrument :
ECD_O
ClientSampleId :



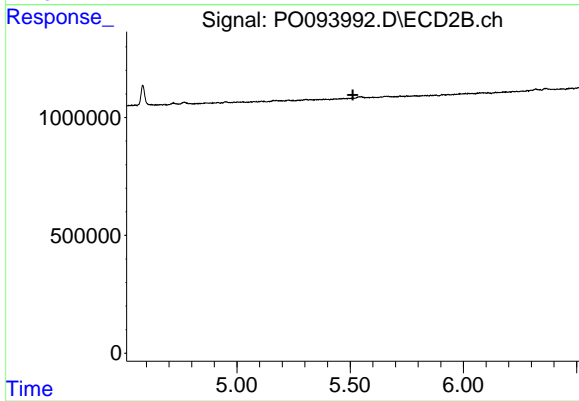
#25 AR-1248-5

R.T.: 0.000 min
Exp R.T. : 5.553 min
Response: 0
Conc: N.D.



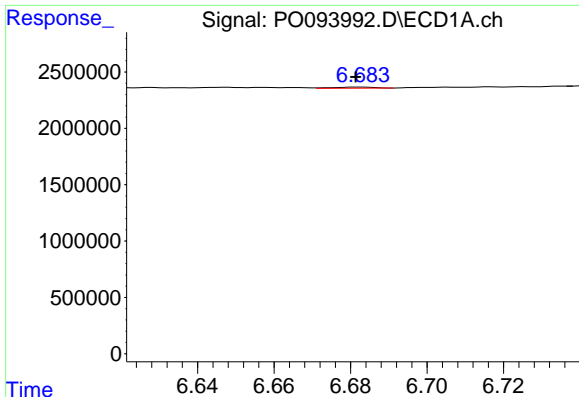
#26 AR-1254-1

R.T.: 6.457 min
Delta R.T.: -0.003 min
Response: 123565
Conc: 0.91 ng/ml



#26 AR-1254-1

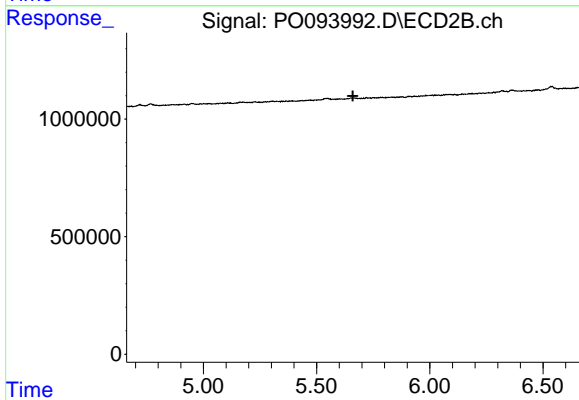
R.T.: 0.000 min
Exp R.T. : 5.512 min
Response: 0
Conc: N.D.



#27 AR-1254-2

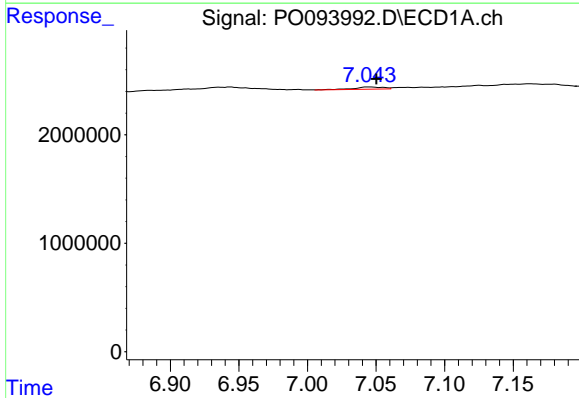
R.T.: 6.683 min
 Delta R.T.: 0.001 min
 Response: 71432
 Conc: 0.37 ng/ml

Instrument :
 ECD_O
 ClientSampleId :



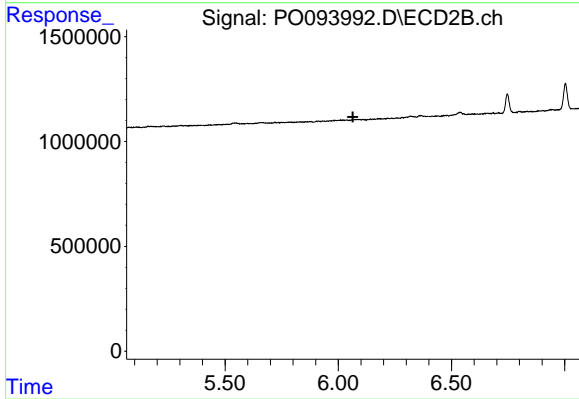
#27 AR-1254-2

R.T.: 0.000 min
 Exp R.T. : 5.660 min
 Response: 0
 Conc: N.D.



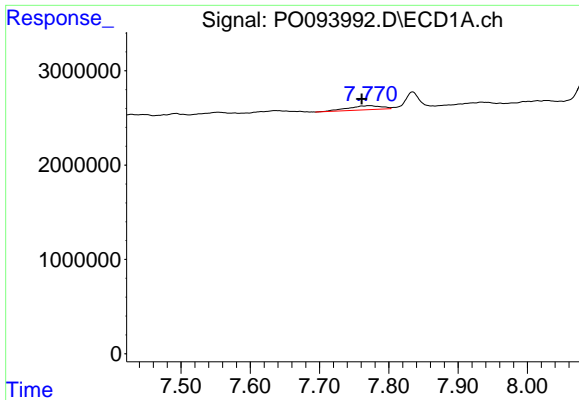
#28 AR-1254-3

R.T.: 7.045 min
 Delta R.T.: -0.006 min
 Response: 303619
 Conc: 1.64 ng/ml



#28 AR-1254-3

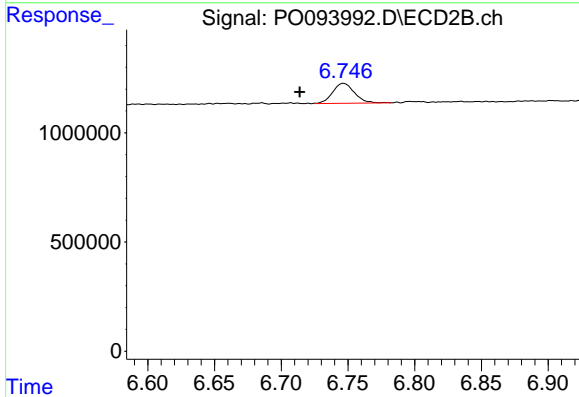
R.T.: 0.000 min
 Exp R.T. : 6.065 min
 Response: 0
 Conc: N.D.



#30 AR-1254-5

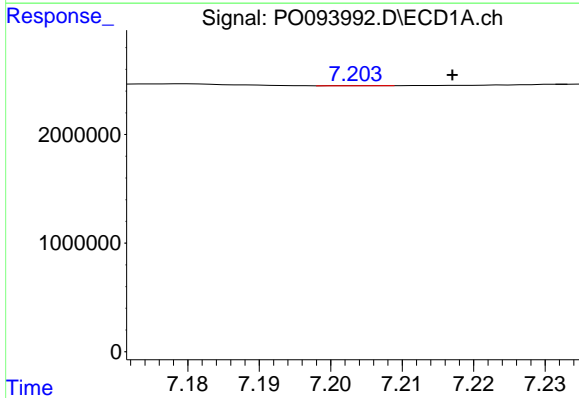
R.T.: 7.771 min
 Delta R.T.: 0.010 min
 Response: 1421058
 Conc: 10.48 ng/ml

Instrument :
 ECD_O
 ClientSampleId :



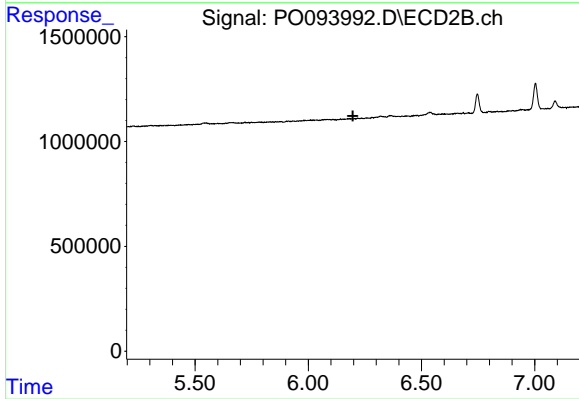
#30 AR-1254-5

R.T.: 6.747 min
 Delta R.T.: 0.033 min
 Response: 1039380
 Conc: 14.41 ng/ml



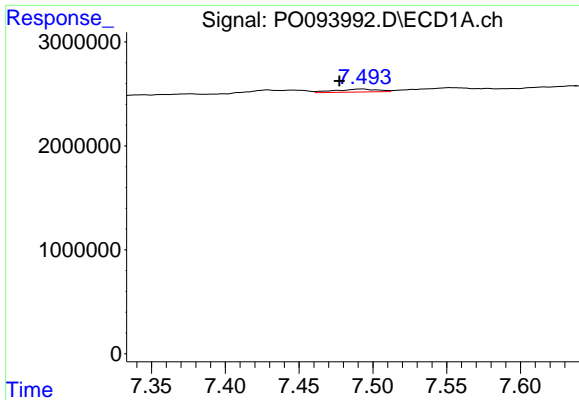
#31 AR-1260-1

R.T.: 7.205 min
 Delta R.T.: -0.012 min
 Response: 8196
 Conc: 0.06 ng/ml



#31 AR-1260-1

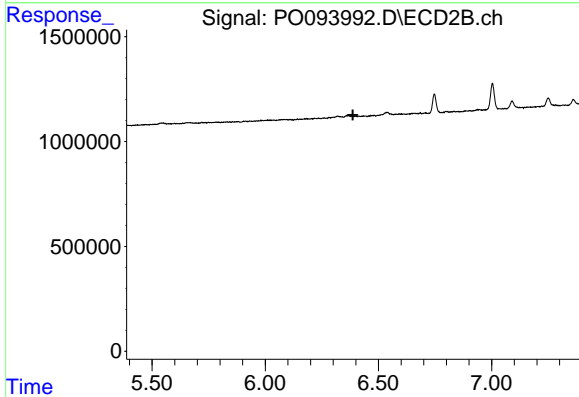
R.T.: 0.000 min
 Exp R.T.: 6.197 min
 Response: 0
 Conc: N.D.



#32 AR-1260-2

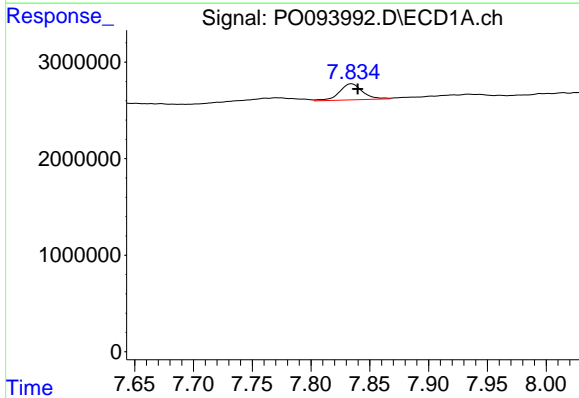
R.T.: 7.493 min
 Delta R.T.: 0.015 min
 Response: 555282
 Conc: 3.47 ng/ml

Instrument :
 ECD_O
 ClientSampleId :



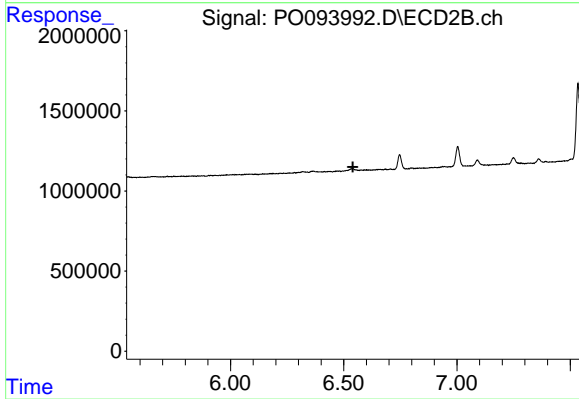
#32 AR-1260-2

R.T.: 0.000 min
 Exp R.T. : 6.387 min
 Response: 0
 Conc: N.D.



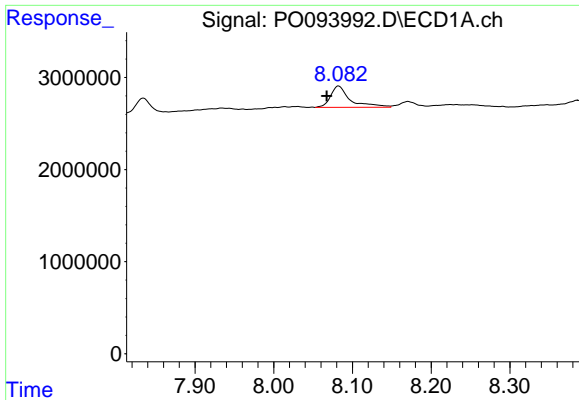
#33 AR-1260-3

R.T.: 7.835 min
 Delta R.T.: -0.005 min
 Response: 2276347
 Conc: 17.14 ng/ml



#33 AR-1260-3

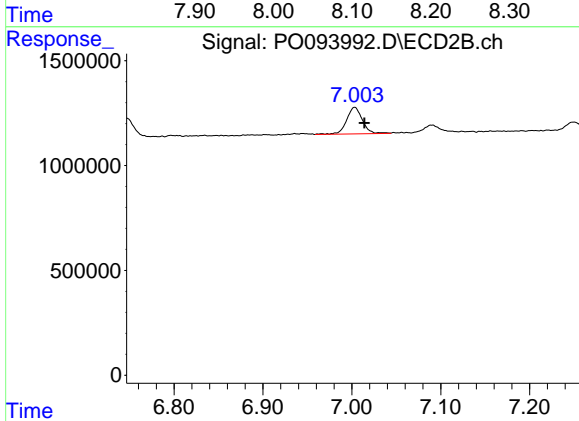
R.T.: 0.000 min
 Exp R.T. : 6.540 min
 Response: 0
 Conc: N.D.



#34 AR-1260-4

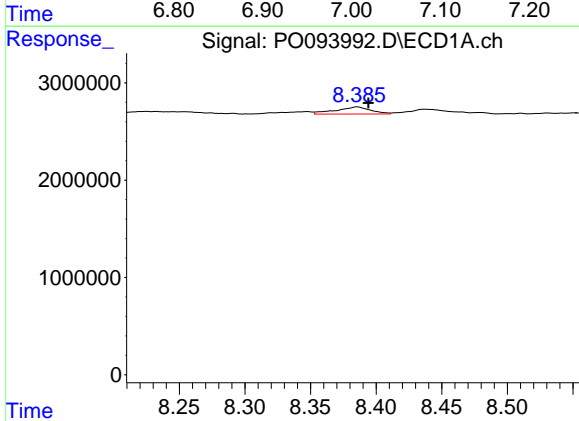
R.T.: 8.082 min
 Delta R.T.: 0.015 min
 Response: 4031562
 Conc: 29.27 ng/ml

Instrument :
 ECD_O
 ClientSampleId :



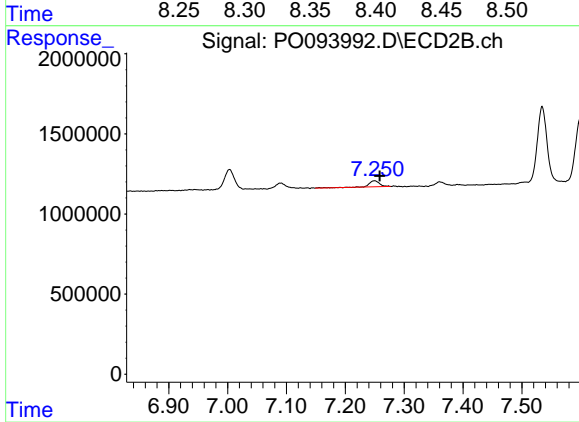
#34 AR-1260-4

R.T.: 7.003 min
 Delta R.T.: -0.011 min
 Response: 1567006
 Conc: 28.22 ng/ml



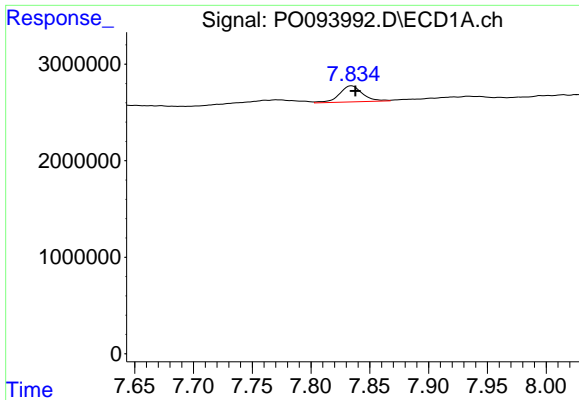
#35 AR-1260-5

R.T.: 8.386 min
 Delta R.T.: -0.008 min
 Response: 1348988
 Conc: 6.19 ng/ml



#35 AR-1260-5

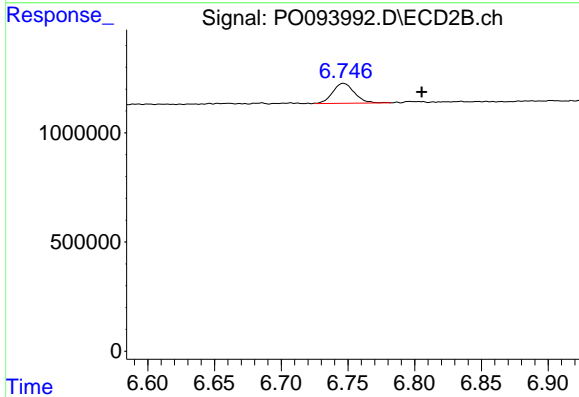
R.T.: 7.250 min
 Delta R.T.: -0.009 min
 Response: 488994
 Conc: 4.71 ng/ml



#36 AR-1262-1

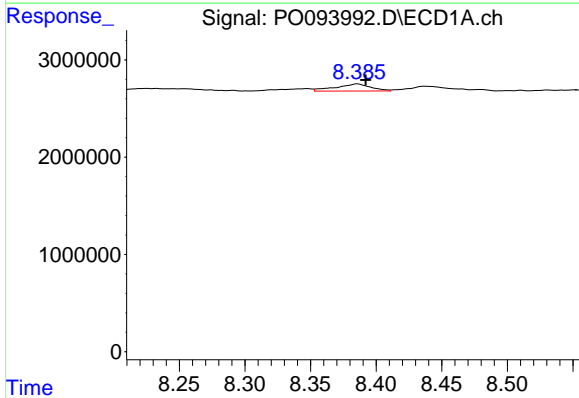
R.T.: 7.835 min
 Delta R.T.: -0.003 min
 Response: 2276347
 Conc: 13.33 ng/ml

Instrument :
 ECD_O
 ClientSampleId :



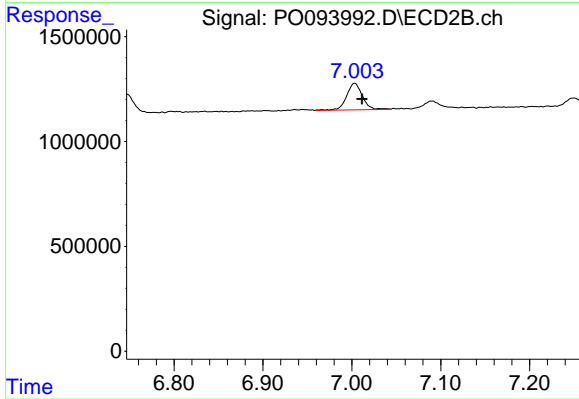
#36 AR-1262-1

R.T.: 6.747 min
 Delta R.T.: -0.059 min
 Response: 1039380
 Conc: 29.71 ng/ml



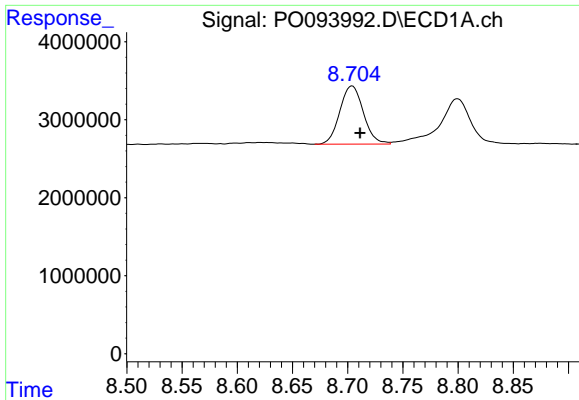
#37 AR-1262-2

R.T.: 8.386 min
 Delta R.T.: -0.006 min
 Response: 1348988
 Conc: 5.80 ng/ml



#37 AR-1262-2

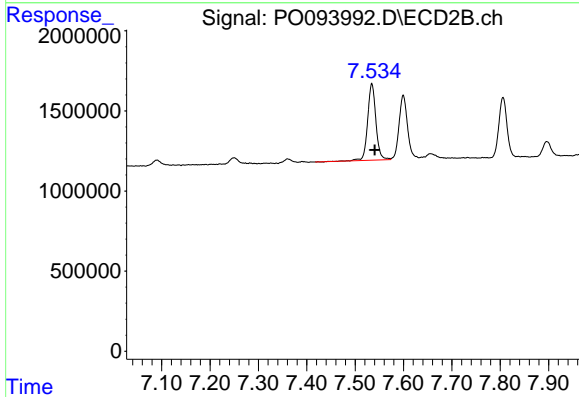
R.T.: 7.003 min
 Delta R.T.: -0.008 min
 Response: 1567006
 Conc: 22.18 ng/ml



#38 AR-1262-3

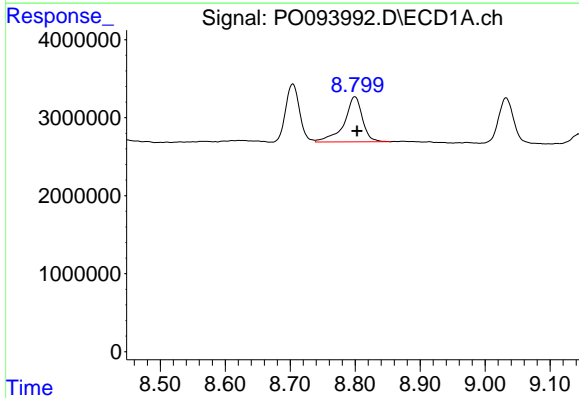
R.T.: 8.704 min
 Delta R.T.: -0.007 min
 Response: 11088856
 Conc: 67.70 ng/ml

Instrument :
 ECD_O
 ClientSampleId :



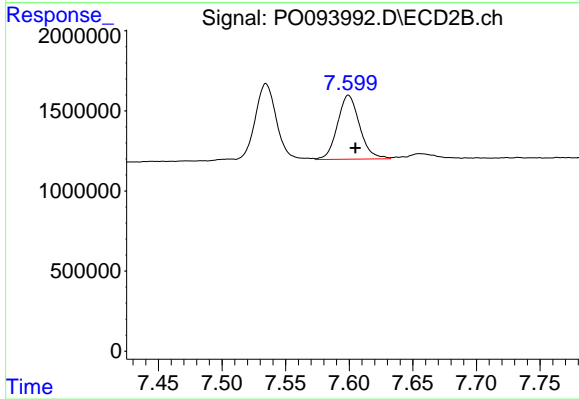
#38 AR-1262-3

R.T.: 7.535 min
 Delta R.T.: -0.006 min
 Response: 5657852
 Conc: 113.08 ng/ml



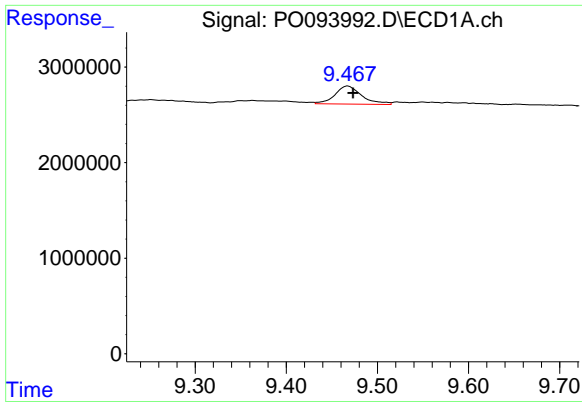
#39 AR-1262-4

R.T.: 8.800 min
 Delta R.T.: -0.003 min
 Response: 11357381
 Conc: 113.35 ng/ml



#39 AR-1262-4

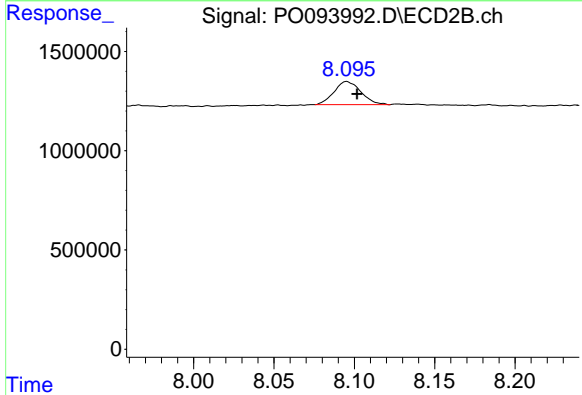
R.T.: 7.599 min
 Delta R.T.: -0.005 min
 Response: 4835937
 Conc: 58.31 ng/ml



#40 AR-1262-5

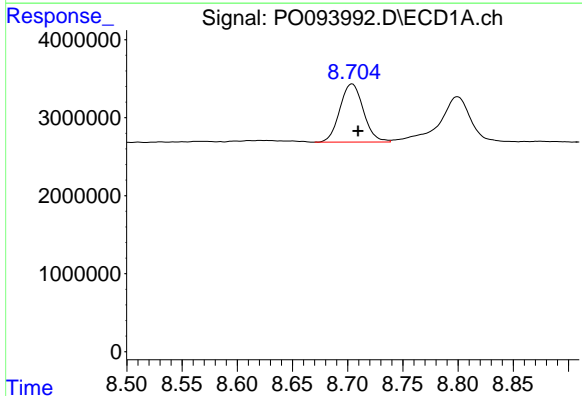
R.T.: 9.467 min
 Delta R.T.: -0.006 min
 Response: 3880554
 Conc: 48.21 ng/ml

Instrument :
 ECD_O
 ClientSampleId :



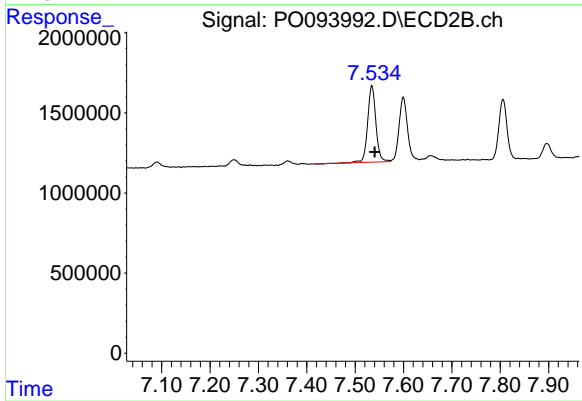
#40 AR-1262-5

R.T.: 8.095 min
 Delta R.T.: -0.006 min
 Response: 1362942
 Conc: 41.90 ng/ml



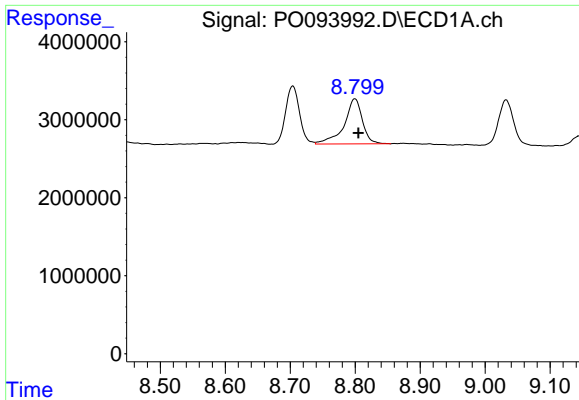
#41 AR-1268-1

R.T.: 8.704 min
 Delta R.T.: -0.005 min
 Response: 11088856
 Conc: 32.95 ng/ml



#41 AR-1268-1

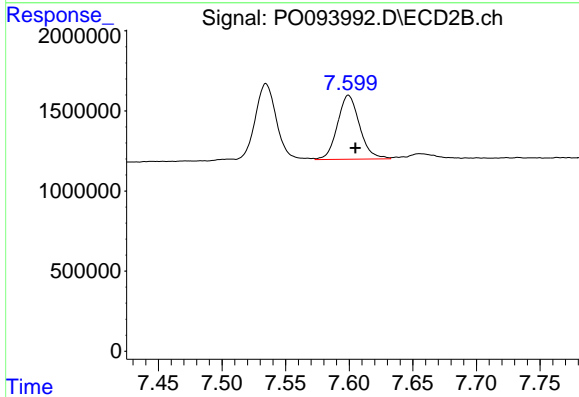
R.T.: 7.535 min
 Delta R.T.: -0.006 min
 Response: 5657852
 Conc: 37.04 ng/ml



#42 AR-1268-2

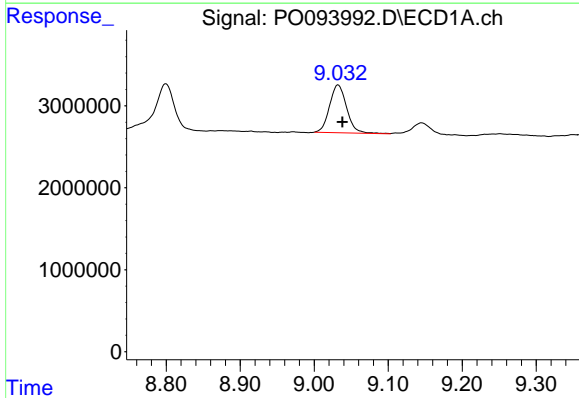
R.T.: 8.800 min
Delta R.T.: -0.005 min
Response: 11357381
Conc: 35.29 ng/ml

Instrument :
ECD_O
ClientSampleId :



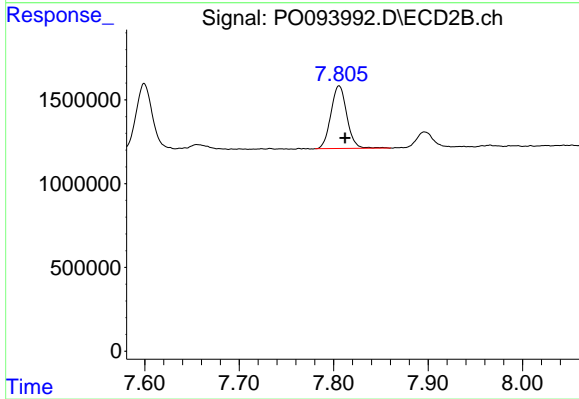
#42 AR-1268-2

R.T.: 7.599 min
Delta R.T.: -0.005 min
Response: 4835937
Conc: 35.59 ng/ml



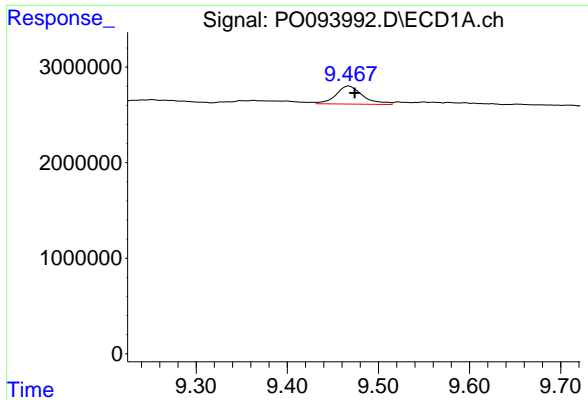
#43 AR-1268-3

R.T.: 9.032 min
Delta R.T.: -0.006 min
Response: 9380408
Conc: 33.08 ng/ml



#43 AR-1268-3

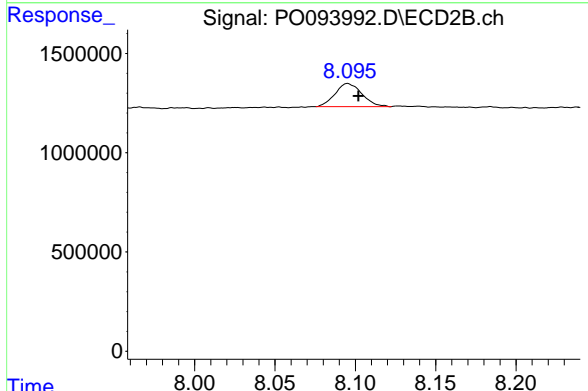
R.T.: 7.806 min
Delta R.T.: -0.006 min
Response: 4384748
Conc: 33.50 ng/ml



#44 AR-1268-4

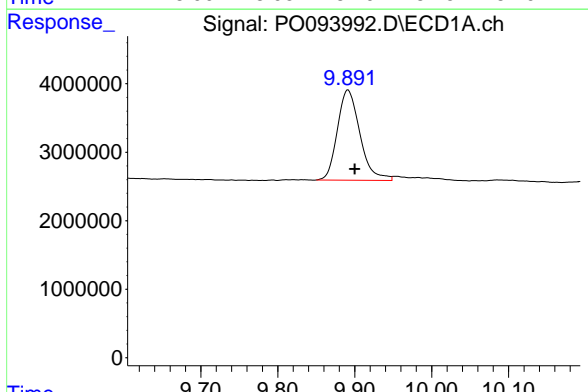
R.T.: 9.467 min
 Delta R.T.: -0.007 min
 Response: 3880554
 Conc: 40.13 ng/ml

Instrument :
 ECD_O
 ClientSampleId :



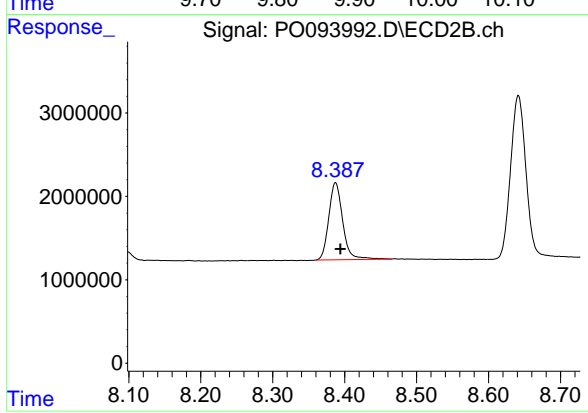
#44 AR-1268-4

R.T.: 8.095 min
 Delta R.T.: -0.007 min
 Response: 1362942
 Conc: 34.43 ng/ml



#45 AR-1268-5

R.T.: 9.891 min
 Delta R.T.: -0.009 min
 Response: 26770373
 Conc: 31.87 ng/ml



#45 AR-1268-5

R.T.: 8.387 min
 Delta R.T.: -0.007 min
 Response: 12475344
 Conc: 35.59 ng/ml