

Data Path : Z:\pestpcbsrv\HPCHEM1\ECD_O\Data\P0040723\
 Data File : P0093995.D
 Signal(s) : Signal #1: ECD1A.ch Signal #2: ECD2B.ch
 Acq On : 08 Apr 2023 10:28
 Operator : YP/AJ
 Sample : 02213-09
 Misc : AR1660 MDL 25 PPB
 ALS Vial : 58 Sample Multiplier: 1

Instrument :
 ECD_O
 ClientSampleId :

Integration File signal 1: autoint1.e
 Integration File signal 2: autoint2.e
 Quant Time: Apr 08 13:34:23 2023
 Quant Method : Z:\pestpcbsrv\HPCHEM1\ECD_O\methods\P0040323.M
 Quant Title : GC EXTRACTABLES
 QLast Update : Tue Apr 04 06:20:55 2023
 Response via : Initial Calibration
 Integrator: ChemStation

Volume Inj. : 2 µl
 Signal #1 Phase : ZB-MR2 Signal #2 Phase: ZB-MR2
 Signal #1 Info : 30Mx0.32mmx 0.50µ Signal #2 Info : 30M x 0.32mm x 0.25µm

Compound	RT#1	RT#2	Resp#1	Resp#2	ng/ml	ng/ml
System Monitoring Compounds						
1) SA Tetrachlo...	4.418	3.624	68965830	25425400	18.449	19.966
2) SA Decachlor...	10.240	8.641	53720099	24829390	24.015	24.835
Target Compounds						
3) L1 AR-1016-1	5.594	4.706	3041901	1065853	29.746	30.039
4) L1 AR-1016-2	5.617	4.724	4497699	1623399	28.858	30.057
5) L1 AR-1016-3	5.678	4.901	3224821	769916	32.695	27.164
6) L1 AR-1016-4	5.779	4.943	2015289	735748	27.408	27.863
7) L1 AR-1016-5	6.075	5.155	2586737	1019322	30.554	31.151
8) L2 AR-1221-1	4.624	0.000	405372	0	8.790	N.D. #
9) L2 AR-1221-2	4.724	3.922	1172873	530049	34.168	44.910 #
10) L2 AR-1221-3	4.791	3.998	1857710	742598	17.737	20.159
11) L3 AR-1232-1	4.791	3.998	1857710	742598	21.285	23.770
12) L3 AR-1232-2	5.324	4.724	2541483	1623399	59.429	61.321
13) L3 AR-1232-3	5.617	4.901	4497699	769916	61.230	58.375
14) L3 AR-1232-4	5.779	4.984	2015289	699354	58.546	49.212
15) L3 AR-1232-5	5.871	5.155	2003125	1019322	63.066	65.982
16) L4 AR-1242-1	5.594	4.706	3041901	1065853	34.851	34.636
17) L4 AR-1242-2	5.617	4.724	4497699	1623399	33.826	35.296
18) L4 AR-1242-3	5.678	4.901	3224821	769916	37.989	31.770
19) L4 AR-1242-4	5.779	4.984	2015289	699354	32.254	24.911
20) L4 AR-1242-5	6.524	5.507	761195	872731	11.305	30.610 #
21) L5 AR-1248-1	5.594	4.706	3041901	1065853	45.211	44.687
22) L5 AR-1248-2	5.871	4.943	2003125	735748	18.312	18.471
23) L5 AR-1248-3	6.075	4.984	2586737	699354	21.428	16.755
24) L5 AR-1248-4	6.482	5.155	1001778	1019322	9.328	21.677 #
25) L5 AR-1248-5	6.524	5.507f	761195	872731	6.561	23.376 #
26) L6 AR-1254-1	6.456	5.507	2049382	872731	15.110	12.768
27) L6 AR-1254-2	6.676	5.655	1717851	742468	8.788	12.191 #
28) L6 AR-1254-3	7.048	6.075	1053709	1285950	5.704	14.118 #
29) L6 AR-1254-4	7.335	6.319	749527	478485	7.391	11.233 #
30) L6 AR-1254-5	7.756	6.707	6193013	2113571	45.670	29.293 #
31) L7 AR-1260-1	7.212	6.190	3774873	2007509	25.861	30.785
32) L7 AR-1260-2	7.471	6.379	5180090	2334842	32.365	32.150
33) L7 AR-1260-3	7.834	6.534	3745330	2232532	28.207	30.762
34) L7 AR-1260-4	8.061	7.006	3996109	1718201	29.011	30.940
35) L7 AR-1260-5	8.387	7.249	7229431	3176953	33.195	30.614
36) L8 AR-1262-1	7.834	6.800	3745330	835565	21.925	23.881
37) L8 AR-1262-2	8.387	7.006	7229431	1718201	31.101	24.319
38) L8 AR-1262-3	8.718	7.533	4381990	1187758	26.751	23.739
39) L8 AR-1262-4	8.795	7.597	1556025	2533191	15.530	30.546 #
40) L8 AR-1262-5	9.468	8.094	2857635	739156	35.505	22.722 #
41) L9 AR-1268-1	8.718	7.533	4381990	1187758	13.020	7.775 #

Data Path : Z:\pestpcbsrv\HPCHEM1\ECD_0\Data\P0040723\
 Data File : P0093995.D
 Signal(s) : Signal #1: ECD1A.ch Signal #2: ECD2B.ch
 Acq On : 08 Apr 2023 10:28
 Operator : YP/AJ
 Sample : 02213-09
 Misc : AR1660 MDL 25 PPB
 ALS Vial : 58 Sample Multiplier: 1

Instrument :
 ECD_0
 ClientSampleId :

Integration File signal 1: autoint1.e
 Integration File signal 2: autoint2.e
 Quant Time: Apr 08 13:34:23 2023
 Quant Method : Z:\pestpcbsrv\HPCHEM1\ECD_0\methods\P0040323.M
 Quant Title : GC EXTRACTABLES
 QLast Update : Tue Apr 04 06:20:55 2023
 Response via : Initial Calibration
 Integrator: ChemStation

Volume Inj. : 2 µl
 Signal #1 Phase : ZB-MR1 Signal #2 Phase: ZB-MR2
 Signal #1 Info : 30Mx0.32mmx 0.50µ Signal #2 Info : 30M x 0.32mm x 0.25µm

	Compound	RT#1	RT#2	Resp#1	Resp#2	ng/ml	ng/ml
42)	L9 AR-1268-2	8.795	7.597	1556025	2533191	4.835	18.645 #
43)	L9 AR-1268-3	9.031	0.000	340996	0	1.202	N.D. #
44)	L9 AR-1268-4	9.468	8.094	2857635	739156	29.555	18.673 #
45)	L9 AR-1268-5	9.893	0.000	395538	0	0.471	N.D. #

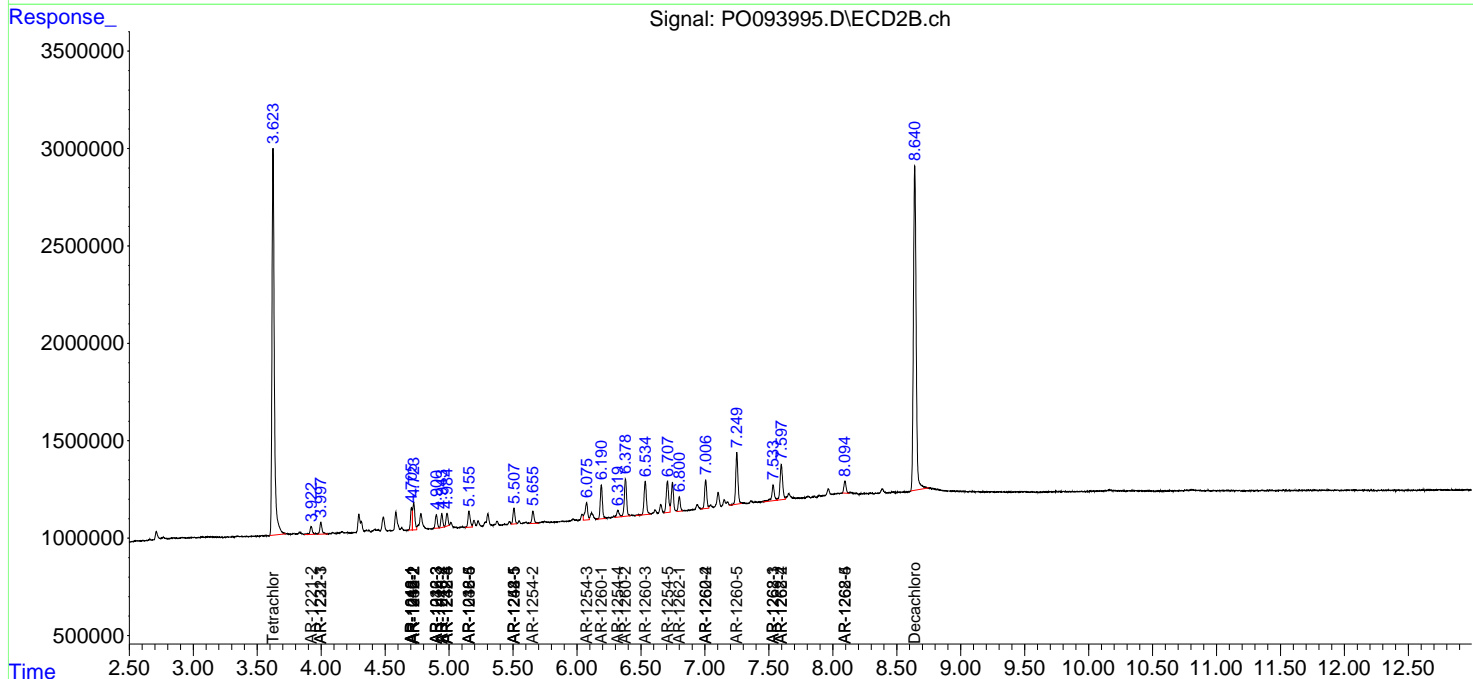
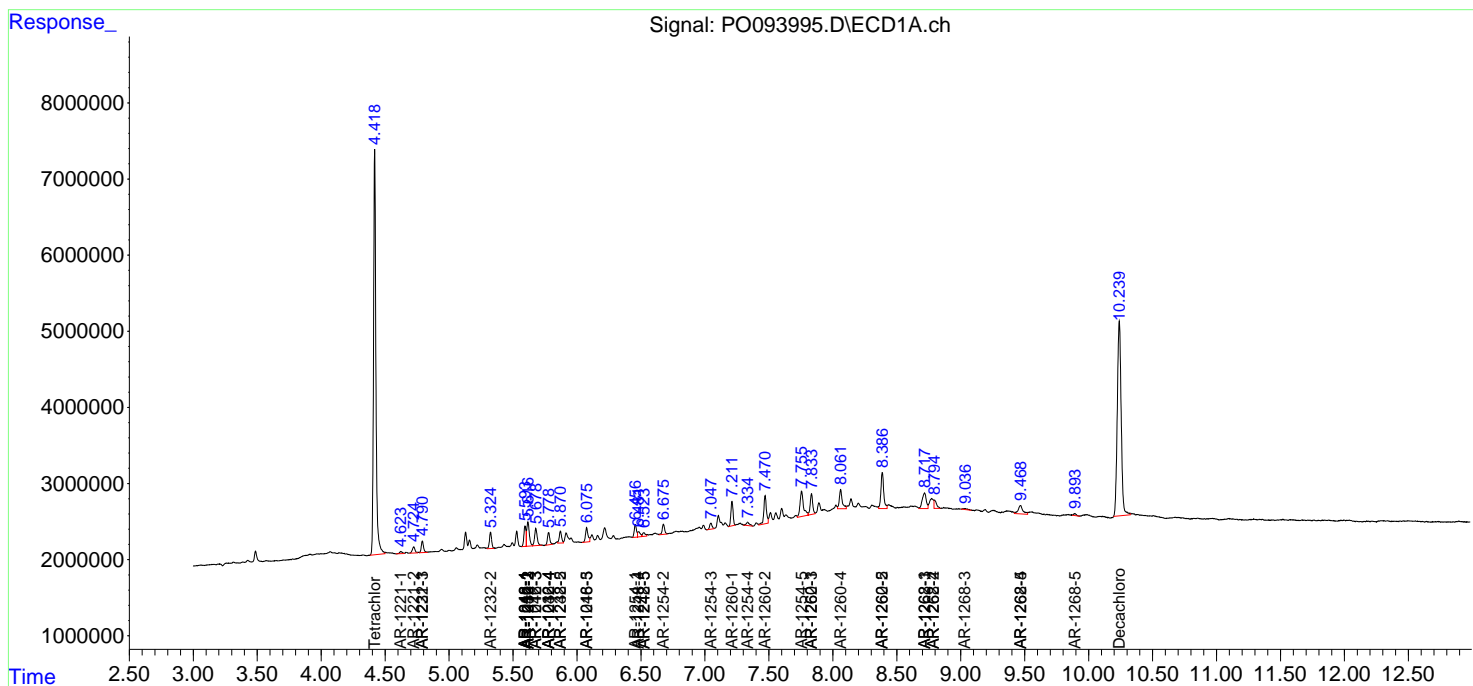
(f)=RT Delta > 1/2 Window (#)=Amounts differ by > 25% (m)=manual int.

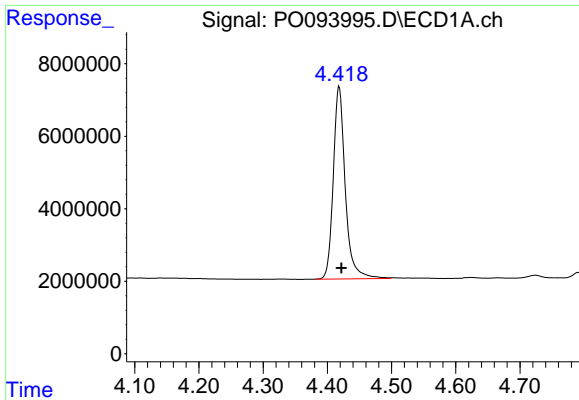
Data Path : Z:\pestpcbsrv\HPCHEM1\ECD_O\Data\PO040723\
 Data File : PO093995.D
 Signal(s) : Signal #1: ECD1A.ch Signal #2: ECD2B.ch
 Acq On : 08 Apr 2023 10:28
 Operator : YP/AJ
 Sample : 02213-09
 Misc : AR1660 MDL 25 PPB
 ALS Vial : 58 Sample Multiplier: 1

Instrument :
 ECD_O
 ClientSampleId :

Integration File signal 1: autoint1.e
 Integration File signal 2: autoint2.e
 Quant Time: Apr 08 13:34:23 2023
 Quant Method : Z:\pestpcbsrv\HPCHEM1\ECD_O\methods\PO040323.M
 Quant Title : GC EXTRACTABLES
 QLast Update : Tue Apr 04 06:20:55 2023
 Response via : Initial Calibration
 Integrator: ChemStation

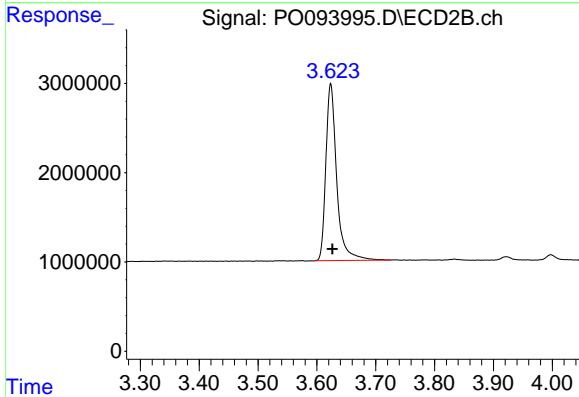
Volume Inj. : 2 µl
 Signal #1 Phase : ZB-MR1 Signal #2 Phase: ZB-MR2
 Signal #1 Info : 30Mx0.32mmx 0.50µ Signal #2 Info : 30M x 0.32mm x 0.25µm



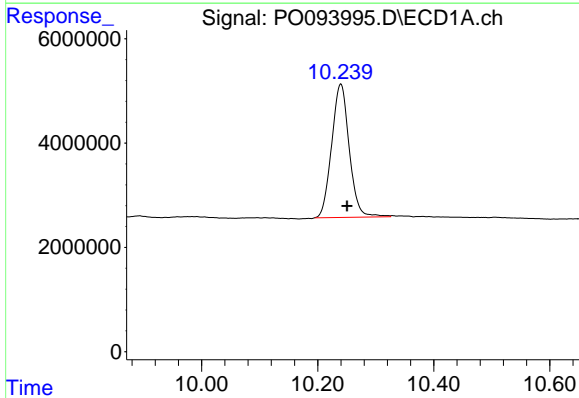


#1 Tetrachloro-m-xylene
 R.T.: 4.418 min
 Delta R.T.: -0.004 min
 Response: 68965830
 Conc: 18.45 ng/ml

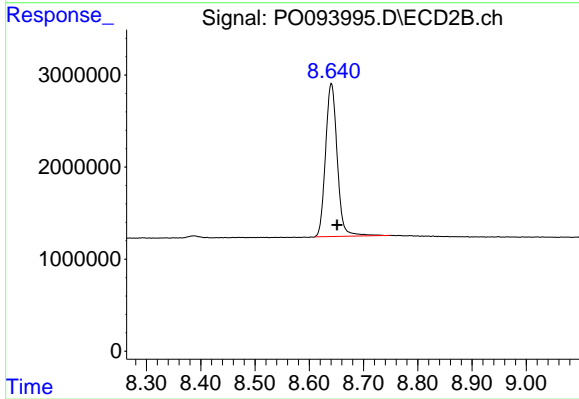
Instrument :
 ECD_O
 ClientSampleId :



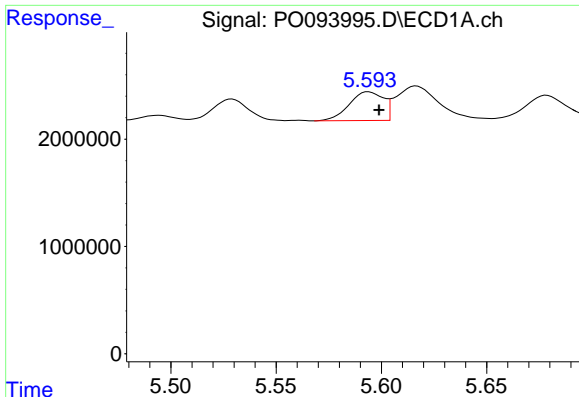
#1 Tetrachloro-m-xylene
 R.T.: 3.624 min
 Delta R.T.: -0.003 min
 Response: 25425400
 Conc: 19.97 ng/ml



#2 Decachlorobiphenyl
 R.T.: 10.240 min
 Delta R.T.: -0.011 min
 Response: 53720099
 Conc: 24.02 ng/ml



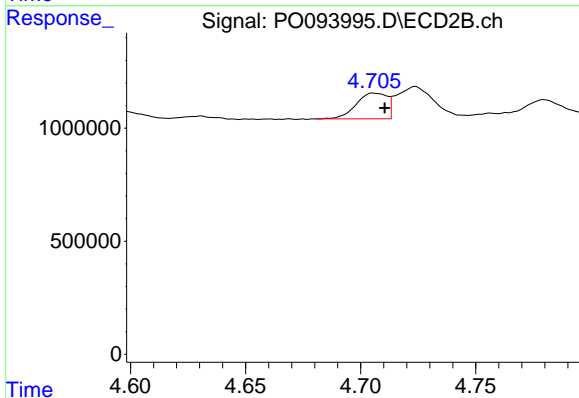
#2 Decachlorobiphenyl
 R.T.: 8.641 min
 Delta R.T.: -0.011 min
 Response: 24829390
 Conc: 24.83 ng/ml



#3 AR-1016-1

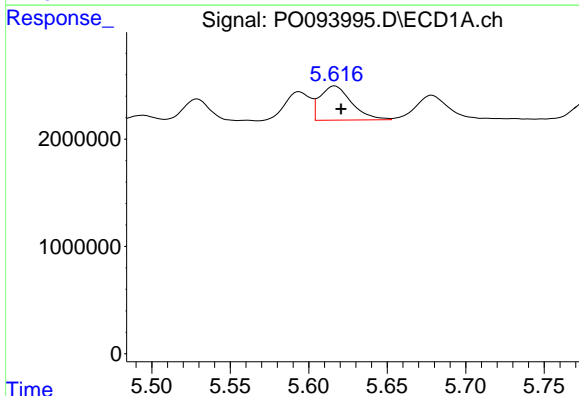
R.T.: 5.594 min
 Delta R.T.: -0.005 min
 Response: 3041901
 Conc: 29.75 ng/ml

Instrument :
 ECD_O
 ClientSampleId :



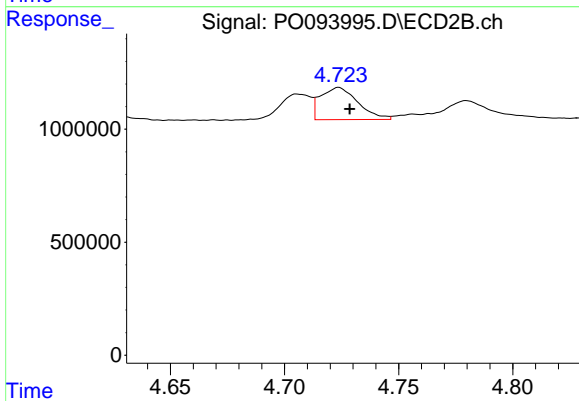
#3 AR-1016-1

R.T.: 4.706 min
 Delta R.T.: -0.004 min
 Response: 1065853
 Conc: 30.04 ng/ml



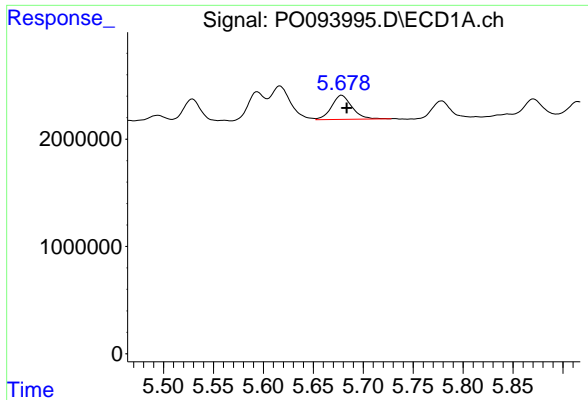
#4 AR-1016-2

R.T.: 5.617 min
 Delta R.T.: -0.004 min
 Response: 4497699
 Conc: 28.86 ng/ml



#4 AR-1016-2

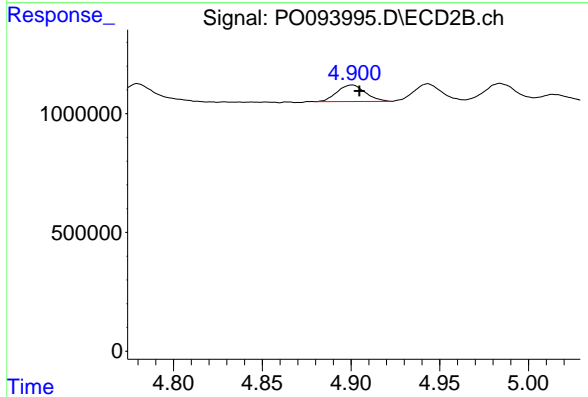
R.T.: 4.724 min
 Delta R.T.: -0.005 min
 Response: 1623399
 Conc: 30.06 ng/ml



#5 AR-1016-3

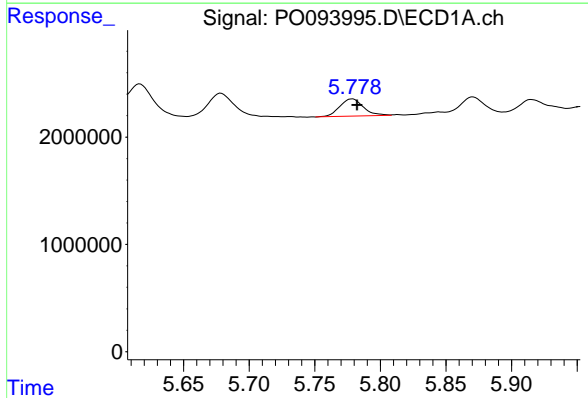
R.T.: 5.678 min
 Delta R.T.: -0.005 min
 Response: 3224821
 Conc: 32.70 ng/ml

Instrument :
 ECD_O
 ClientSampleId :



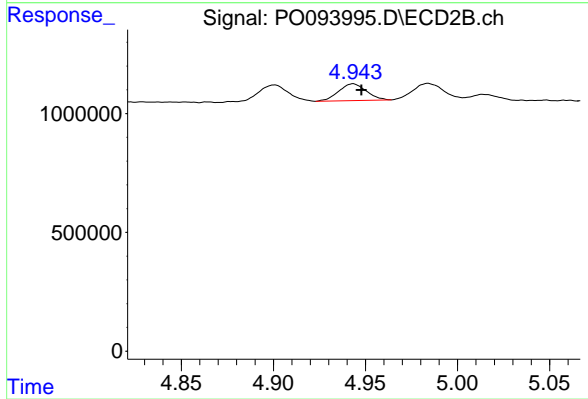
#5 AR-1016-3

R.T.: 4.901 min
 Delta R.T.: -0.004 min
 Response: 769916
 Conc: 27.16 ng/ml



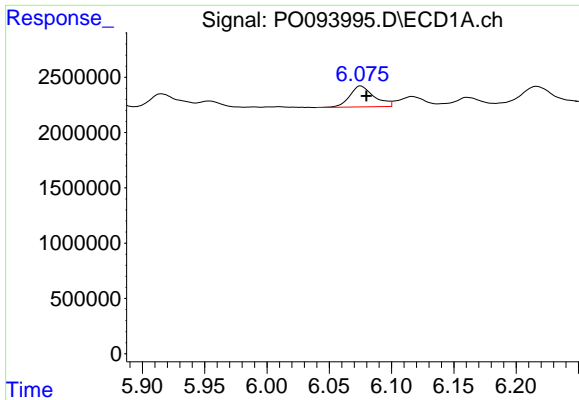
#6 AR-1016-4

R.T.: 5.779 min
 Delta R.T.: -0.003 min
 Response: 2015289
 Conc: 27.41 ng/ml



#6 AR-1016-4

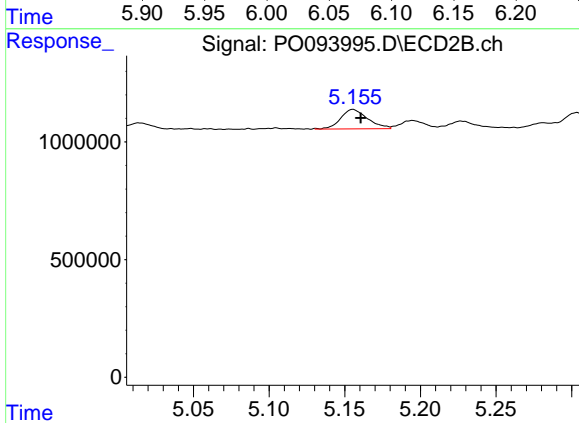
R.T.: 4.943 min
 Delta R.T.: -0.004 min
 Response: 735748
 Conc: 27.86 ng/ml



#7 AR-1016-5

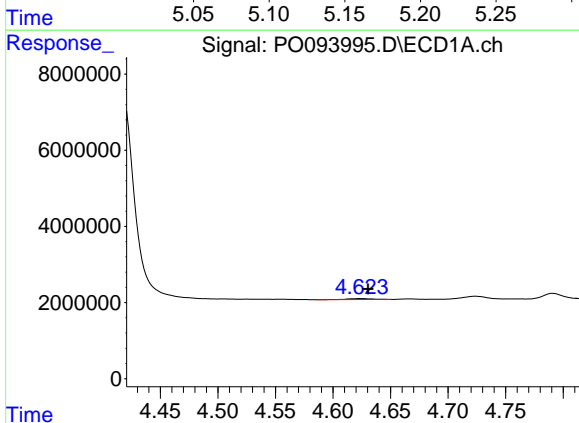
R.T.: 6.075 min
 Delta R.T.: -0.004 min
 Response: 2586737
 Conc: 30.55 ng/ml

Instrument :
 ECD_O
 ClientSampleId :



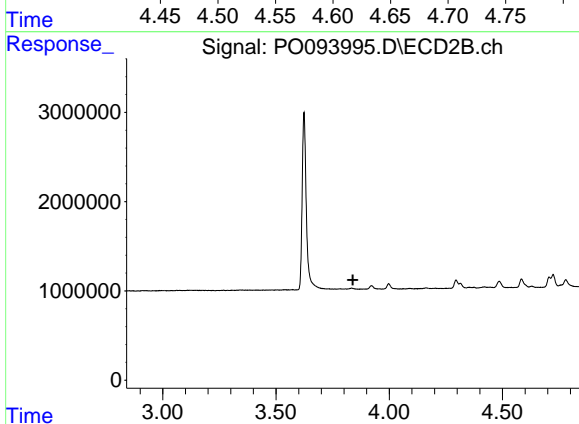
#7 AR-1016-5

R.T.: 5.155 min
 Delta R.T.: -0.005 min
 Response: 1019322
 Conc: 31.15 ng/ml



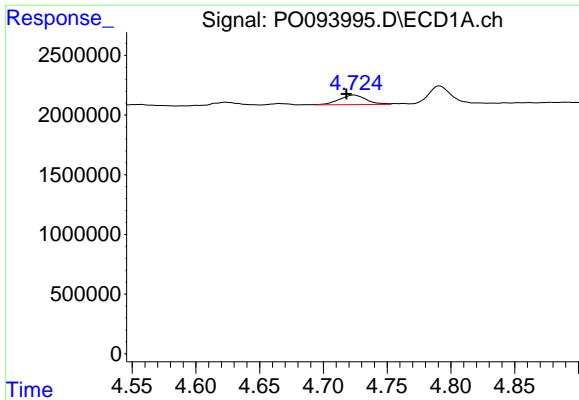
#8 AR-1221-1

R.T.: 4.624 min
 Delta R.T.: -0.007 min
 Response: 405372
 Conc: 8.79 ng/ml



#8 AR-1221-1

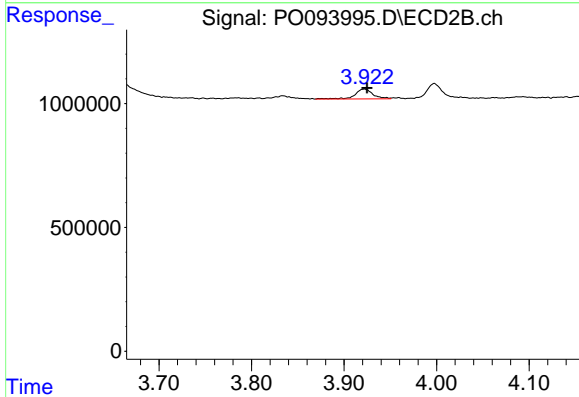
R.T.: 0.000 min
 Exp R.T. : 3.840 min
 Response: 0
 Conc: N.D.



#9 AR-1221-2

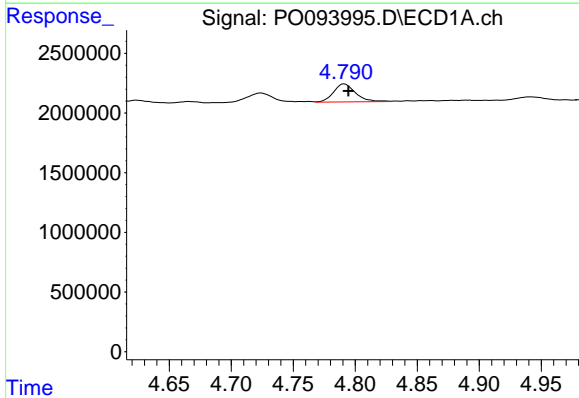
R.T.: 4.724 min
 Delta R.T.: 0.006 min
 Response: 1172873
 Conc: 34.17 ng/ml

Instrument :
 ECD_O
 ClientSampleId :



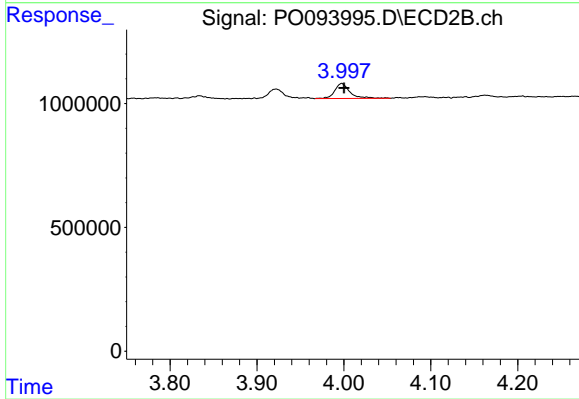
#9 AR-1221-2

R.T.: 3.922 min
 Delta R.T.: -0.003 min
 Response: 530049
 Conc: 44.91 ng/ml



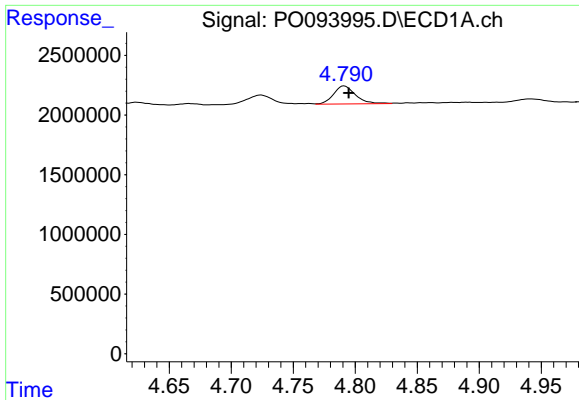
#10 AR-1221-3

R.T.: 4.791 min
 Delta R.T.: -0.003 min
 Response: 1857710
 Conc: 17.74 ng/ml



#10 AR-1221-3

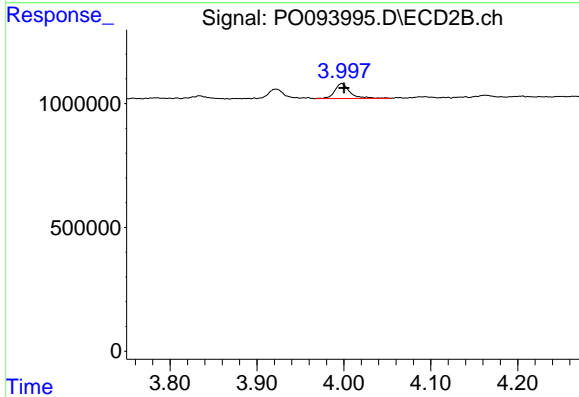
R.T.: 3.998 min
 Delta R.T.: -0.003 min
 Response: 742598
 Conc: 20.16 ng/ml



#11 AR-1232-1

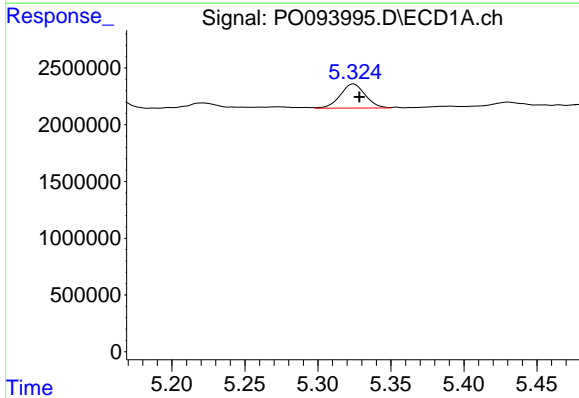
R.T.: 4.791 min
 Delta R.T.: -0.004 min
 Response: 1857710
 Conc: 21.29 ng/ml

Instrument :
 ECD_O
 ClientSampleId :



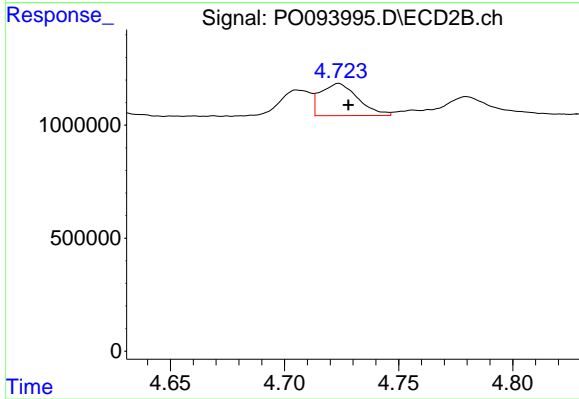
#11 AR-1232-1

R.T.: 3.998 min
 Delta R.T.: -0.003 min
 Response: 742598
 Conc: 23.77 ng/ml



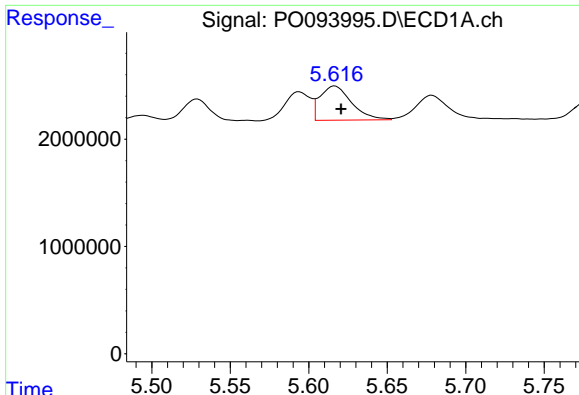
#12 AR-1232-2

R.T.: 5.324 min
 Delta R.T.: -0.004 min
 Response: 2541483
 Conc: 59.43 ng/ml



#12 AR-1232-2

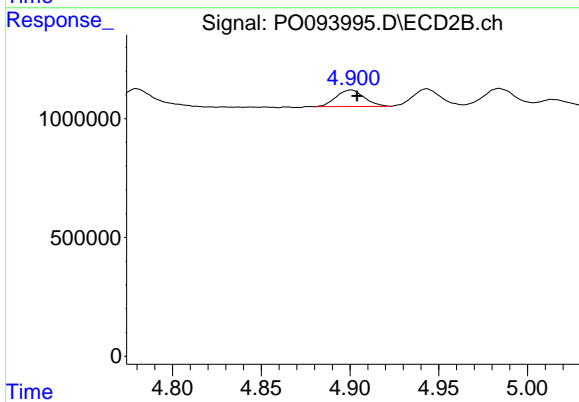
R.T.: 4.724 min
 Delta R.T.: -0.004 min
 Response: 1623399
 Conc: 61.32 ng/ml



#13 AR-1232-3

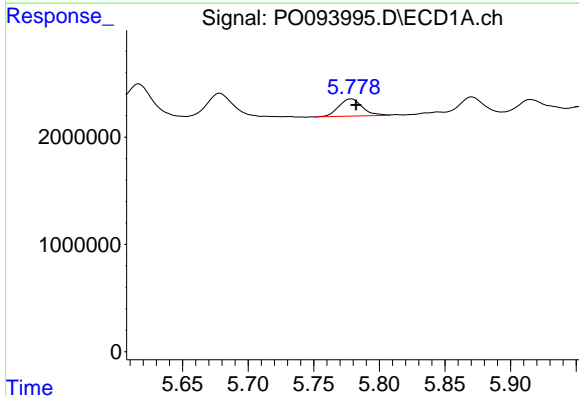
R.T.: 5.617 min
 Delta R.T.: -0.004 min
 Response: 4497699
 Conc: 61.23 ng/ml

Instrument :
 ECD_O
 ClientSampleId :



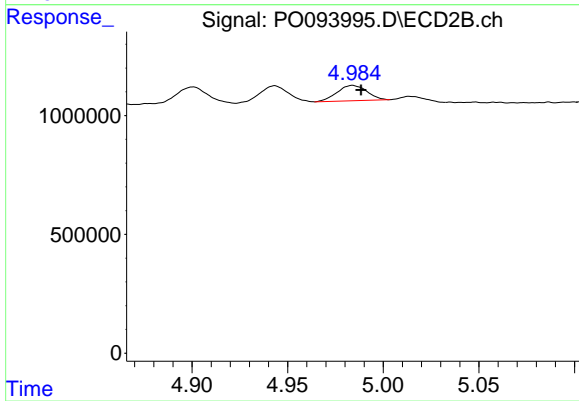
#13 AR-1232-3

R.T.: 4.901 min
 Delta R.T.: -0.003 min
 Response: 769916
 Conc: 58.37 ng/ml



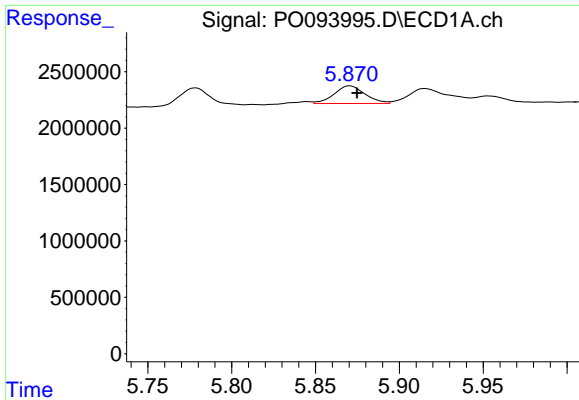
#14 AR-1232-4

R.T.: 5.779 min
 Delta R.T.: -0.003 min
 Response: 2015289
 Conc: 58.55 ng/ml



#14 AR-1232-4

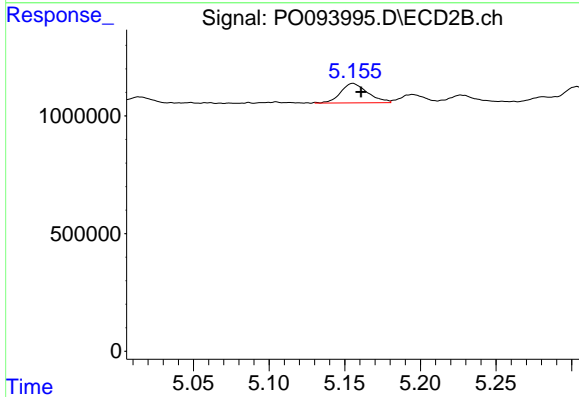
R.T.: 4.984 min
 Delta R.T.: -0.004 min
 Response: 699354
 Conc: 49.21 ng/ml



#15 AR-1232-5

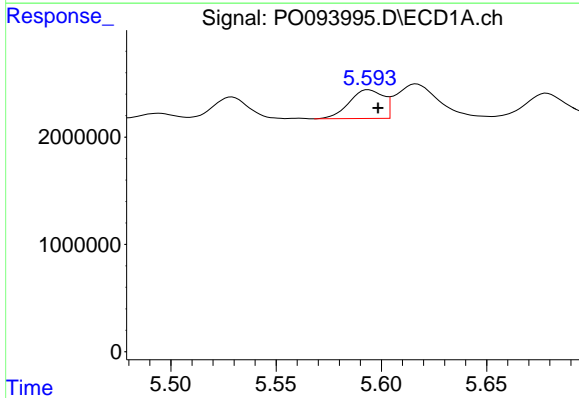
R.T.: 5.871 min
 Delta R.T.: -0.004 min
 Response: 2003125
 Conc: 63.07 ng/ml

Instrument :
 ECD_O
 ClientSampleId :



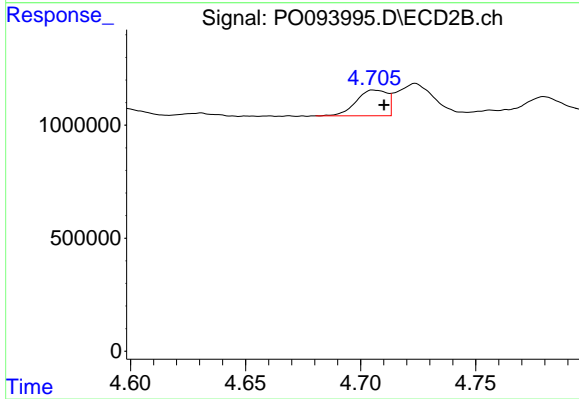
#15 AR-1232-5

R.T.: 5.155 min
 Delta R.T.: -0.005 min
 Response: 1019322
 Conc: 65.98 ng/ml



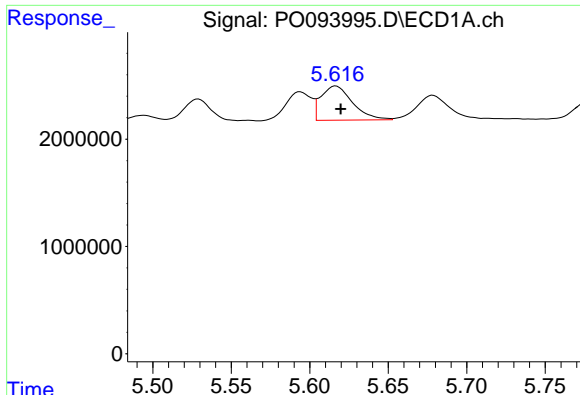
#16 AR-1242-1

R.T.: 5.594 min
 Delta R.T.: -0.005 min
 Response: 3041901
 Conc: 34.85 ng/ml



#16 AR-1242-1

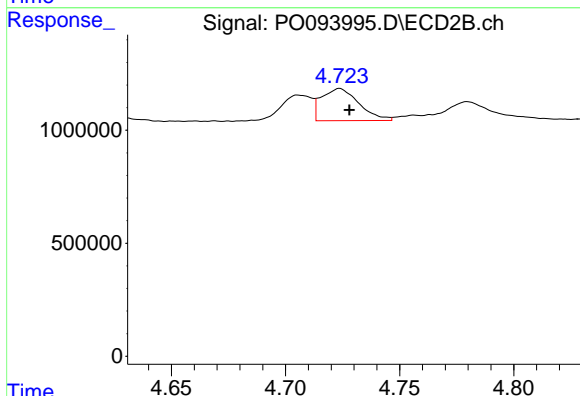
R.T.: 4.706 min
 Delta R.T.: -0.004 min
 Response: 1065853
 Conc: 34.64 ng/ml



#17 AR-1242-2

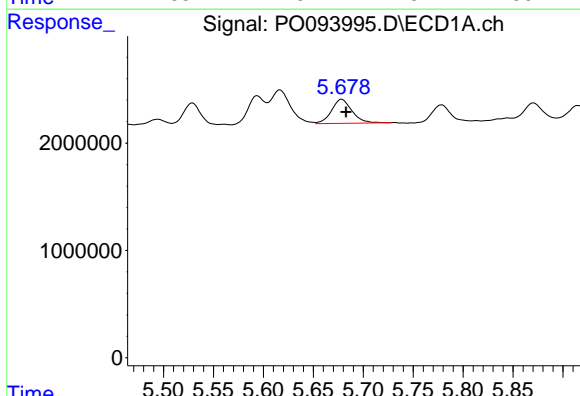
R.T.: 5.617 min
 Delta R.T.: -0.003 min
 Response: 4497699
 Conc: 33.83 ng/ml

Instrument :
 ECD_O
 ClientSampleId :



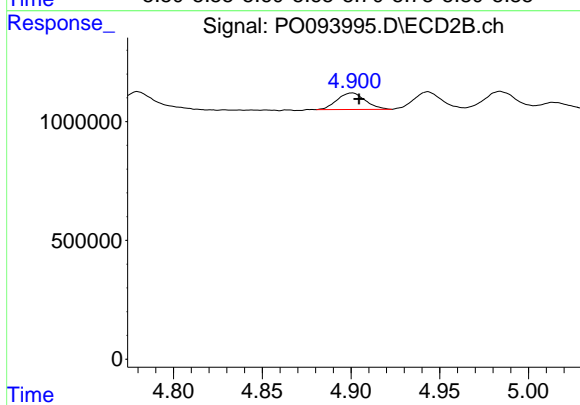
#17 AR-1242-2

R.T.: 4.724 min
 Delta R.T.: -0.004 min
 Response: 1623399
 Conc: 35.30 ng/ml



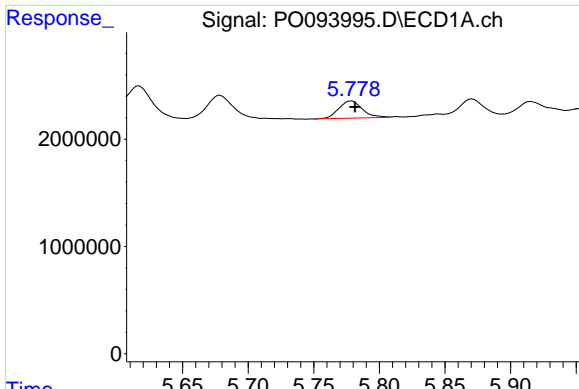
#18 AR-1242-3

R.T.: 5.678 min
 Delta R.T.: -0.004 min
 Response: 3224821
 Conc: 37.99 ng/ml



#18 AR-1242-3

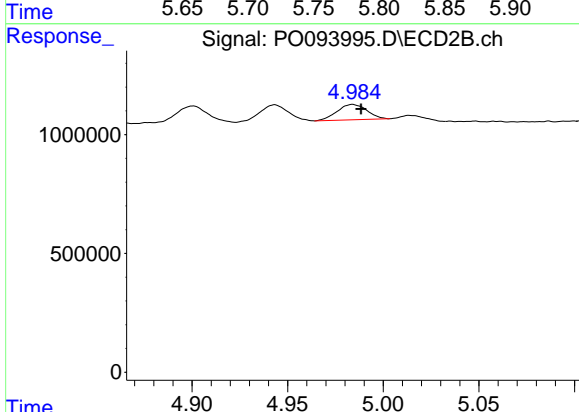
R.T.: 4.901 min
 Delta R.T.: -0.004 min
 Response: 769916
 Conc: 31.77 ng/ml



#19 AR-1242-4

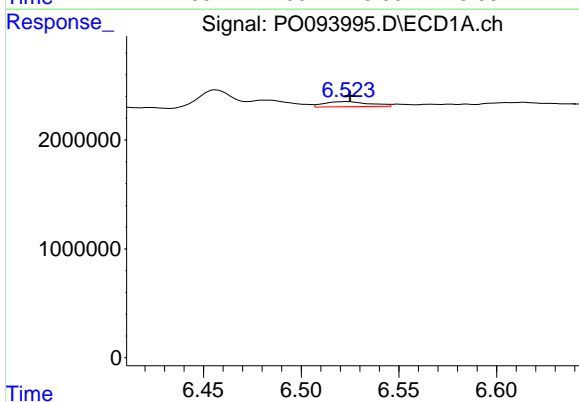
R.T.: 5.779 min
 Delta R.T.: -0.003 min
 Response: 2015289
 Conc: 32.25 ng/ml

Instrument :
 ECD_O
 ClientSampleId :



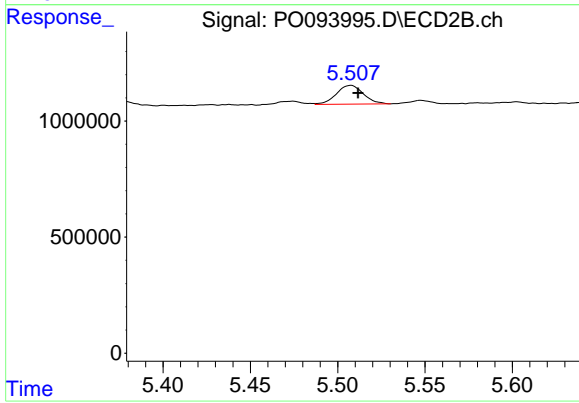
#19 AR-1242-4

R.T.: 4.984 min
 Delta R.T.: -0.004 min
 Response: 699354
 Conc: 24.91 ng/ml



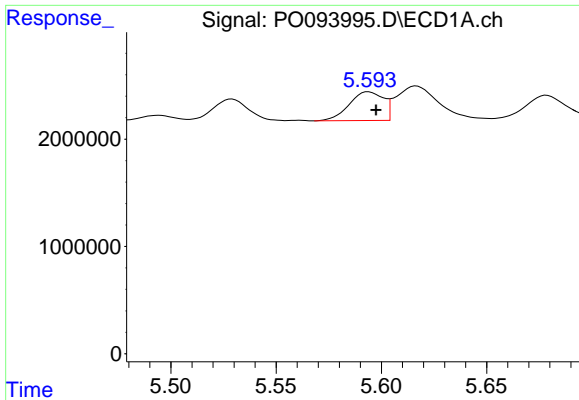
#20 AR-1242-5

R.T.: 6.524 min
 Delta R.T.: -0.001 min
 Response: 761195
 Conc: 11.31 ng/ml



#20 AR-1242-5

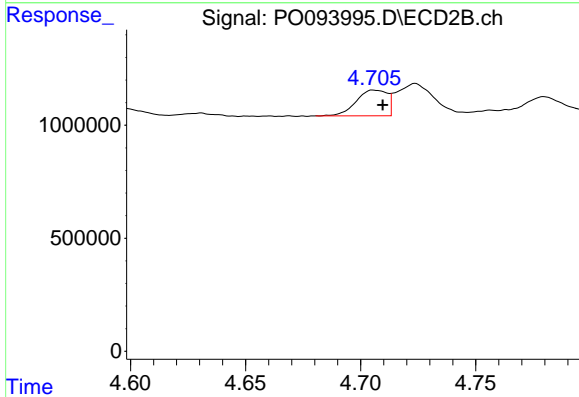
R.T.: 5.507 min
 Delta R.T.: -0.004 min
 Response: 872731
 Conc: 30.61 ng/ml



#21 AR-1248-1

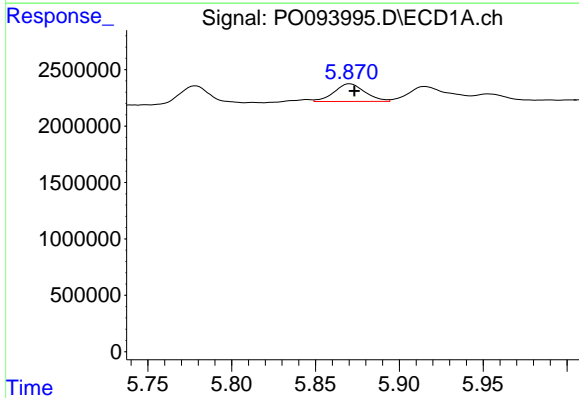
R.T.: 5.594 min
 Delta R.T.: -0.003 min
 Response: 3041901
 Conc: 45.21 ng/ml

Instrument :
 ECD_O
 ClientSampleId :



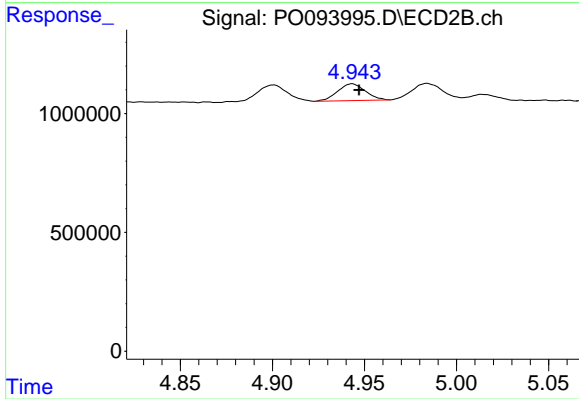
#21 AR-1248-1

R.T.: 4.706 min
 Delta R.T.: -0.004 min
 Response: 1065853
 Conc: 44.69 ng/ml



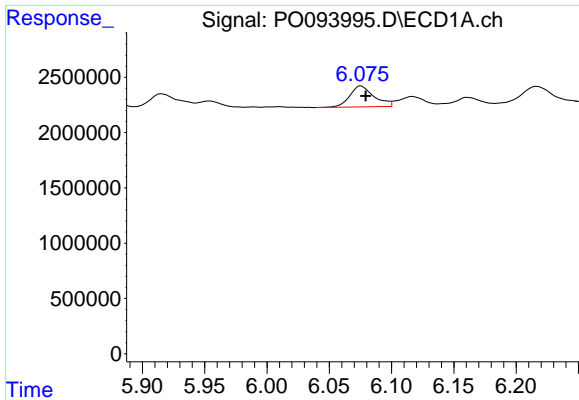
#22 AR-1248-2

R.T.: 5.871 min
 Delta R.T.: -0.003 min
 Response: 2003125
 Conc: 18.31 ng/ml



#22 AR-1248-2

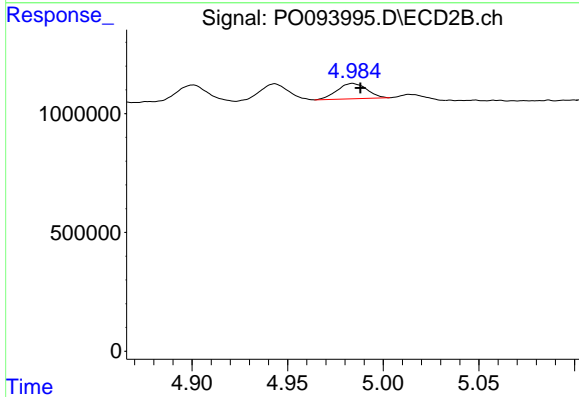
R.T.: 4.943 min
 Delta R.T.: -0.004 min
 Response: 735748
 Conc: 18.47 ng/ml



#23 AR-1248-3

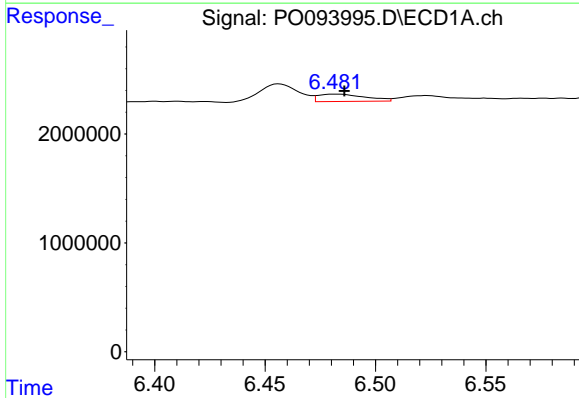
R.T.: 6.075 min
 Delta R.T.: -0.004 min
 Response: 2586737
 Conc: 21.43 ng/ml

Instrument :
 ECD_O
 ClientSampleId :



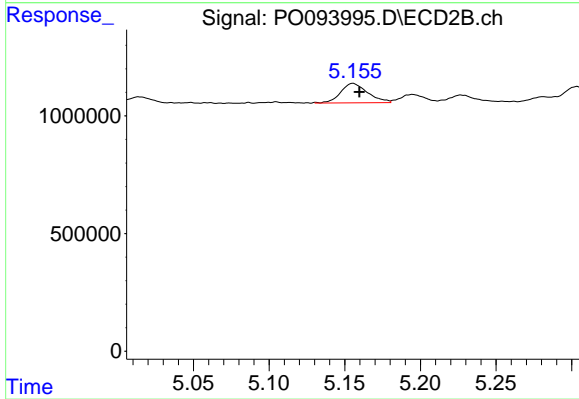
#23 AR-1248-3

R.T.: 4.984 min
 Delta R.T.: -0.004 min
 Response: 699354
 Conc: 16.76 ng/ml



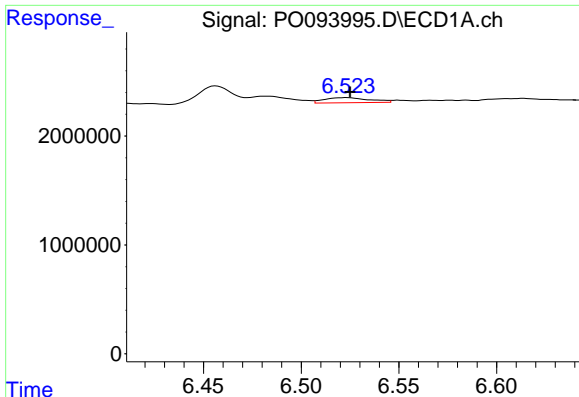
#24 AR-1248-4

R.T.: 6.482 min
 Delta R.T.: -0.004 min
 Response: 1001778
 Conc: 9.33 ng/ml



#24 AR-1248-4

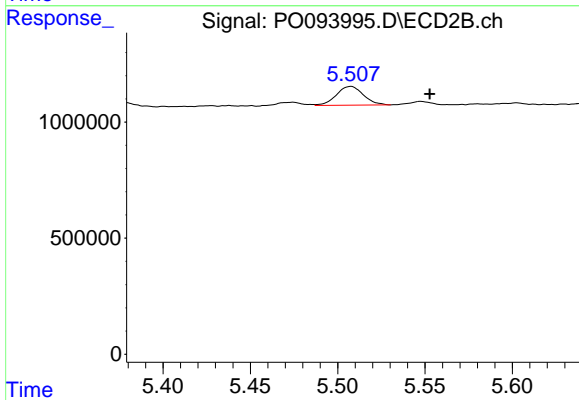
R.T.: 5.155 min
 Delta R.T.: -0.004 min
 Response: 1019322
 Conc: 21.68 ng/ml



#25 AR-1248-5

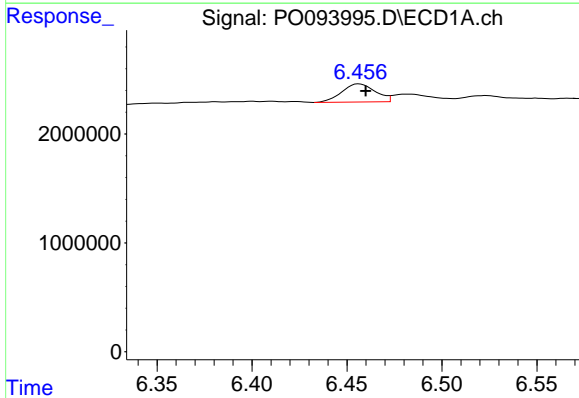
R.T.: 6.524 min
 Delta R.T.: -0.001 min
 Response: 761195
 Conc: 6.56 ng/ml

Instrument :
 ECD_O
 ClientSampleId :



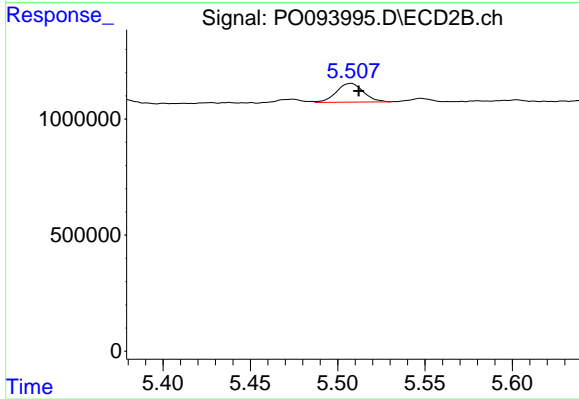
#25 AR-1248-5

R.T.: 5.507 min
 Delta R.T.: -0.045 min
 Response: 872731
 Conc: 23.38 ng/ml



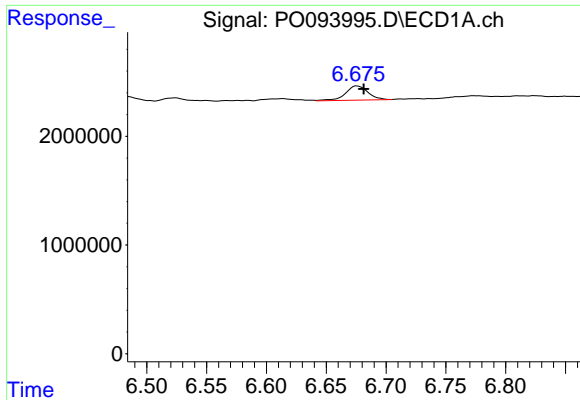
#26 AR-1254-1

R.T.: 6.456 min
 Delta R.T.: -0.003 min
 Response: 2049382
 Conc: 15.11 ng/ml



#26 AR-1254-1

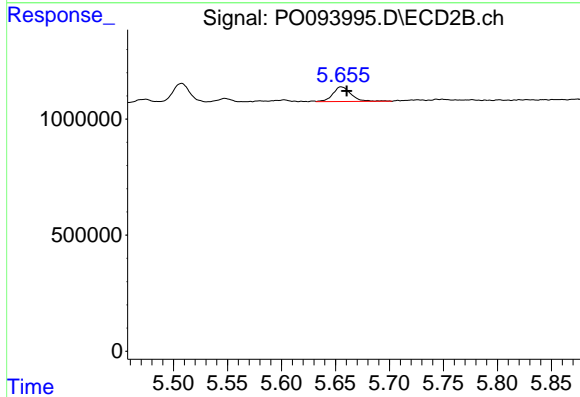
R.T.: 5.507 min
 Delta R.T.: -0.005 min
 Response: 872731
 Conc: 12.77 ng/ml



#27 AR-1254-2

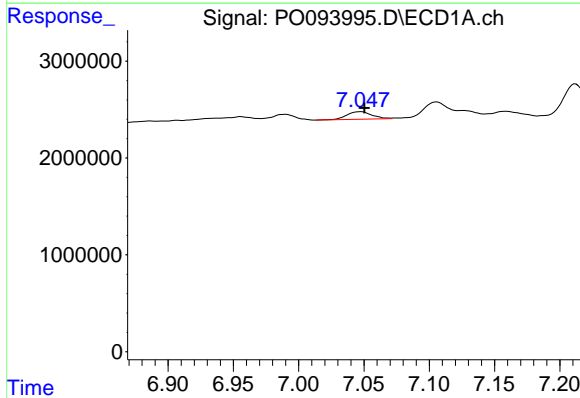
R.T.: 6.676 min
 Delta R.T.: -0.006 min
 Response: 1717851
 Conc: 8.79 ng/ml

Instrument :
 ECD_O
 ClientSampleId :



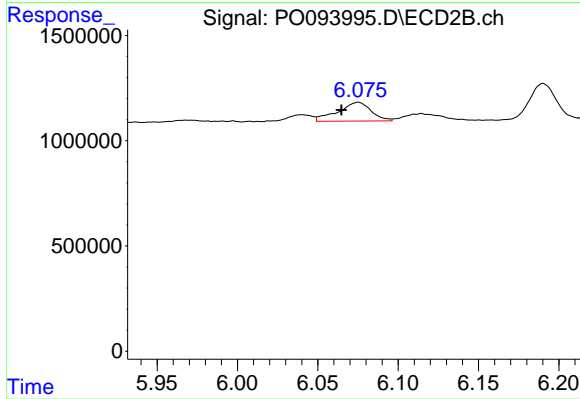
#27 AR-1254-2

R.T.: 5.655 min
 Delta R.T.: -0.005 min
 Response: 742468
 Conc: 12.19 ng/ml



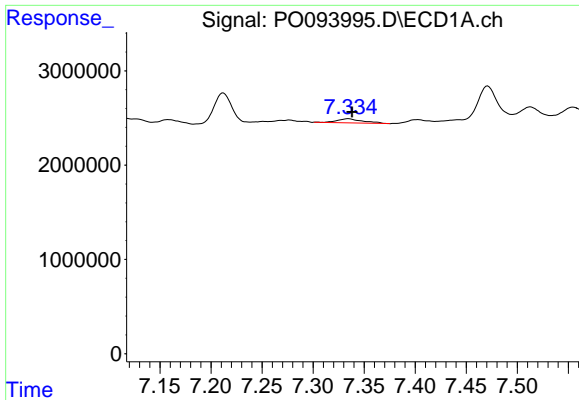
#28 AR-1254-3

R.T.: 7.048 min
 Delta R.T.: -0.003 min
 Response: 1053709
 Conc: 5.70 ng/ml



#28 AR-1254-3

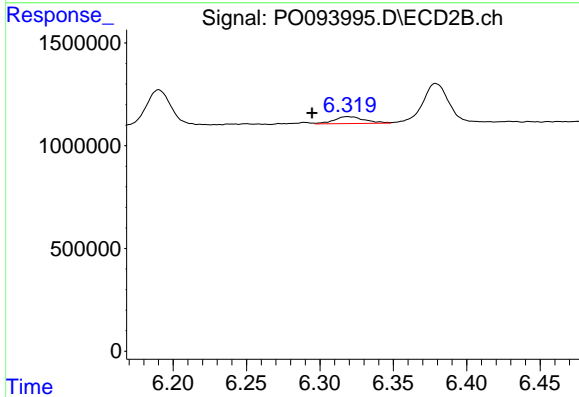
R.T.: 6.075 min
 Delta R.T.: 0.010 min
 Response: 1285950
 Conc: 14.12 ng/ml



#29 AR-1254-4

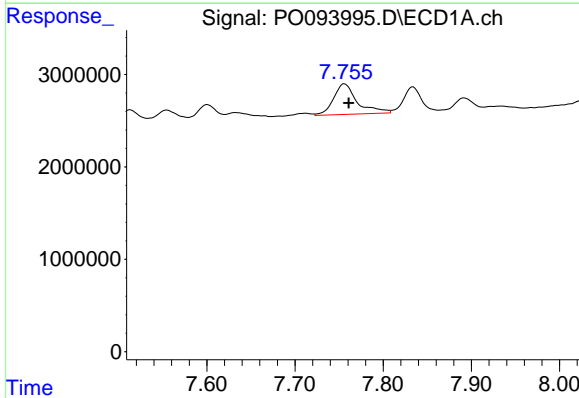
R.T.: 7.335 min
 Delta R.T.: -0.003 min
 Response: 749527
 Conc: 7.39 ng/ml

Instrument :
 ECD_O
 ClientSampleId :



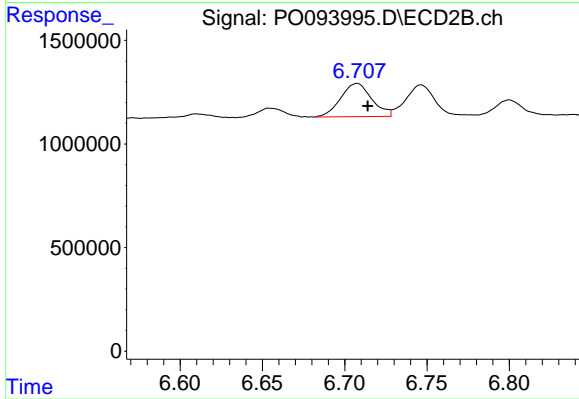
#29 AR-1254-4

R.T.: 6.319 min
 Delta R.T.: 0.024 min
 Response: 478485
 Conc: 11.23 ng/ml



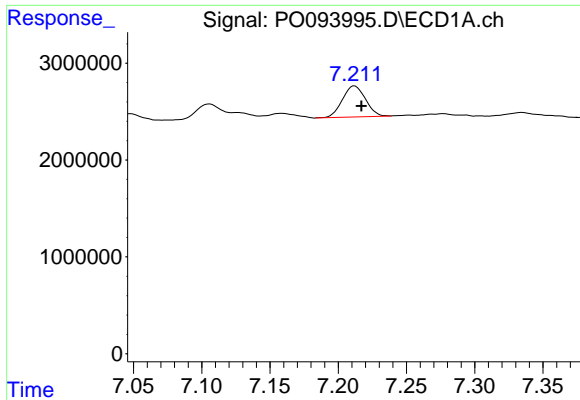
#30 AR-1254-5

R.T.: 7.756 min
 Delta R.T.: -0.005 min
 Response: 6193013
 Conc: 45.67 ng/ml



#30 AR-1254-5

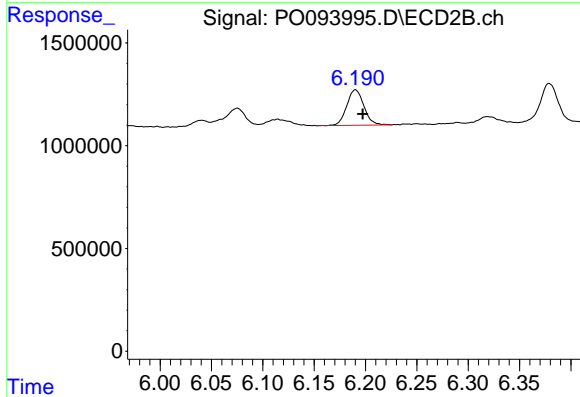
R.T.: 6.707 min
 Delta R.T.: -0.006 min
 Response: 2113571
 Conc: 29.29 ng/ml



#31 AR-1260-1

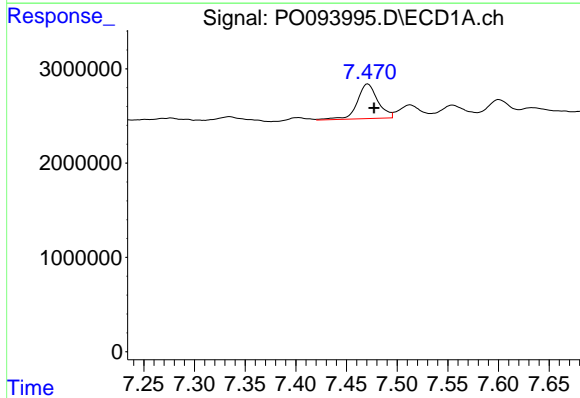
R.T.: 7.212 min
 Delta R.T.: -0.005 min
 Response: 3774873
 Conc: 25.86 ng/ml

Instrument :
 ECD_O
 ClientSampleId :



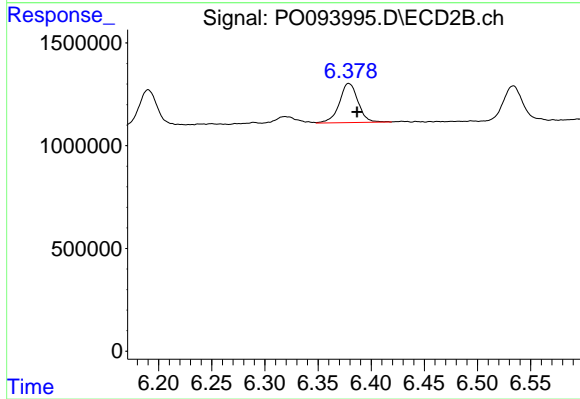
#31 AR-1260-1

R.T.: 6.190 min
 Delta R.T.: -0.007 min
 Response: 2007509
 Conc: 30.78 ng/ml



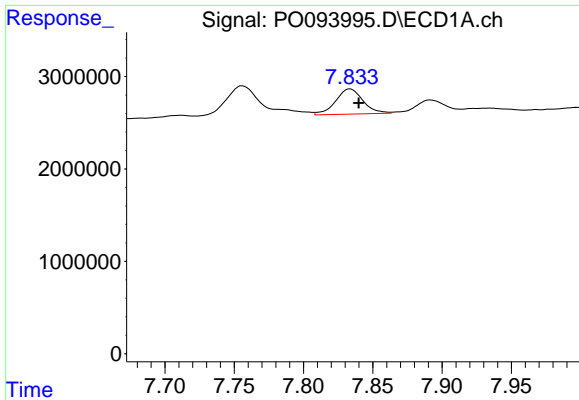
#32 AR-1260-2

R.T.: 7.471 min
 Delta R.T.: -0.006 min
 Response: 5180090
 Conc: 32.36 ng/ml



#32 AR-1260-2

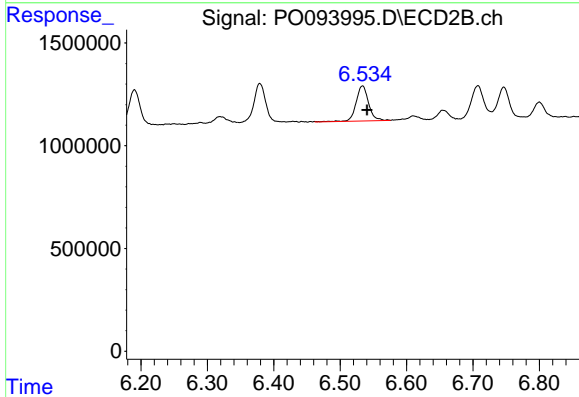
R.T.: 6.379 min
 Delta R.T.: -0.008 min
 Response: 2334842
 Conc: 32.15 ng/ml



#33 AR-1260-3

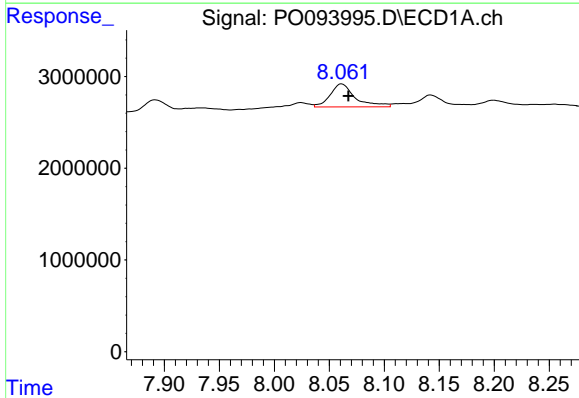
R.T.: 7.834 min
 Delta R.T.: -0.006 min
 Response: 3745330
 Conc: 28.21 ng/ml

Instrument :
 ECD_O
 ClientSampleId :



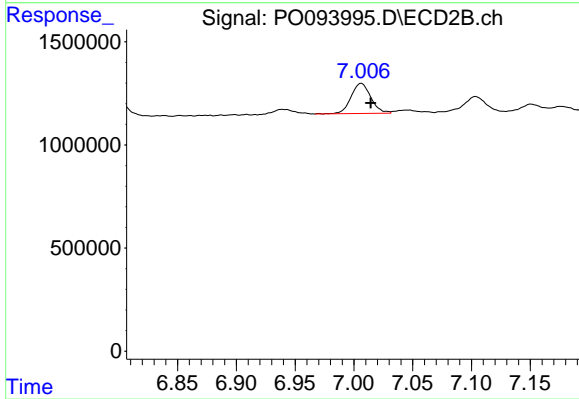
#33 AR-1260-3

R.T.: 6.534 min
 Delta R.T.: -0.007 min
 Response: 2232532
 Conc: 30.76 ng/ml



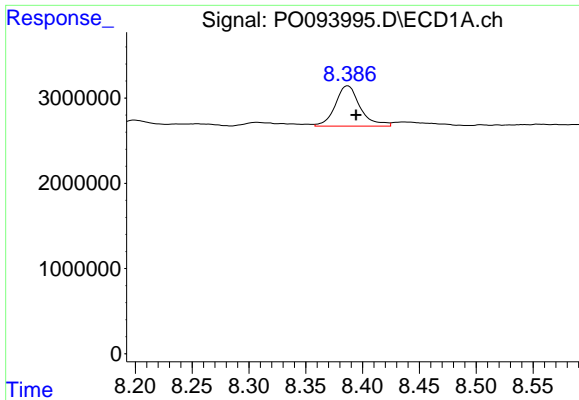
#34 AR-1260-4

R.T.: 8.061 min
 Delta R.T.: -0.006 min
 Response: 3996109
 Conc: 29.01 ng/ml



#34 AR-1260-4

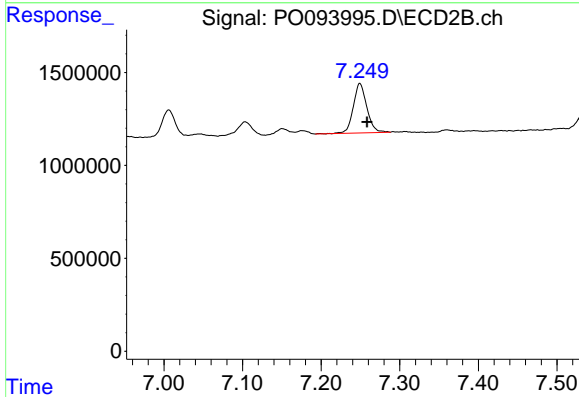
R.T.: 7.006 min
 Delta R.T.: -0.008 min
 Response: 1718201
 Conc: 30.94 ng/ml



#35 AR-1260-5

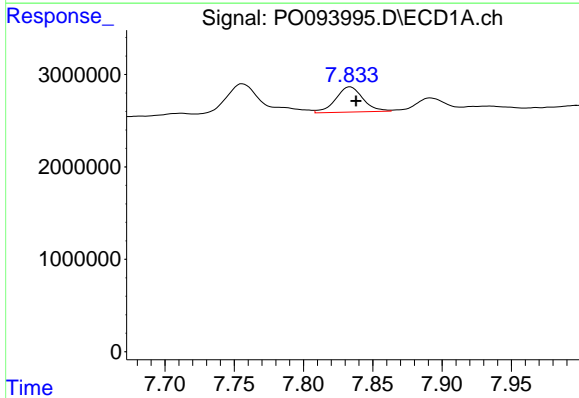
R.T.: 8.387 min
 Delta R.T.: -0.007 min
 Response: 7229431
 Conc: 33.19 ng/ml

Instrument :
 ECD_O
 ClientSampleId :



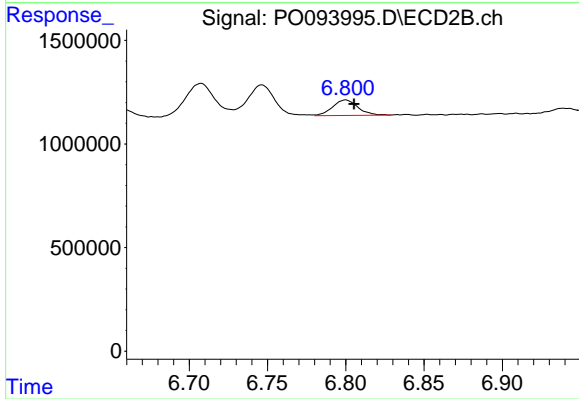
#35 AR-1260-5

R.T.: 7.249 min
 Delta R.T.: -0.009 min
 Response: 3176953
 Conc: 30.61 ng/ml



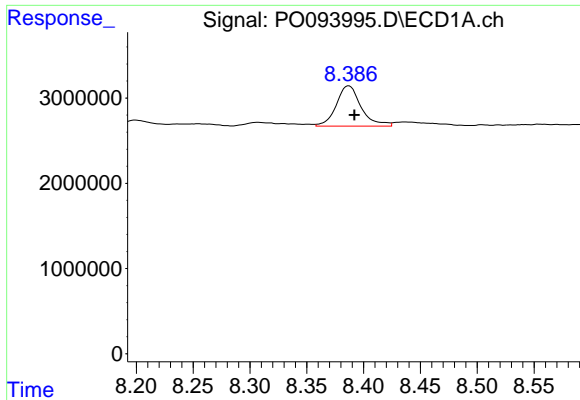
#36 AR-1262-1

R.T.: 7.834 min
 Delta R.T.: -0.004 min
 Response: 3745330
 Conc: 21.93 ng/ml



#36 AR-1262-1

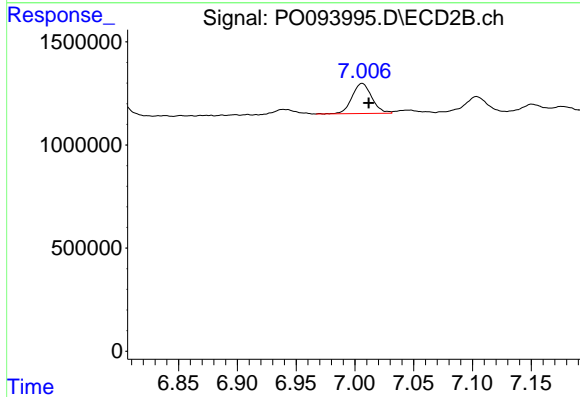
R.T.: 6.800 min
 Delta R.T.: -0.005 min
 Response: 835565
 Conc: 23.88 ng/ml



#37 AR-1262-2

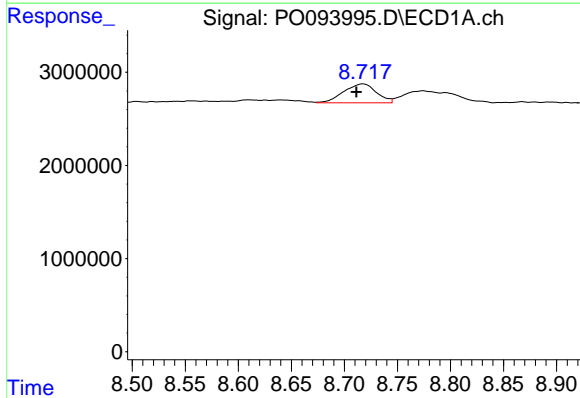
R.T.: 8.387 min
 Delta R.T.: -0.005 min
 Response: 7229431
 Conc: 31.10 ng/ml

Instrument :
 ECD_O
 ClientSampleId :



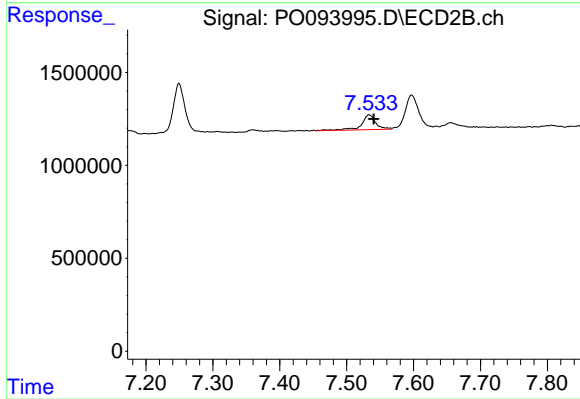
#37 AR-1262-2

R.T.: 7.006 min
 Delta R.T.: -0.005 min
 Response: 1718201
 Conc: 24.32 ng/ml



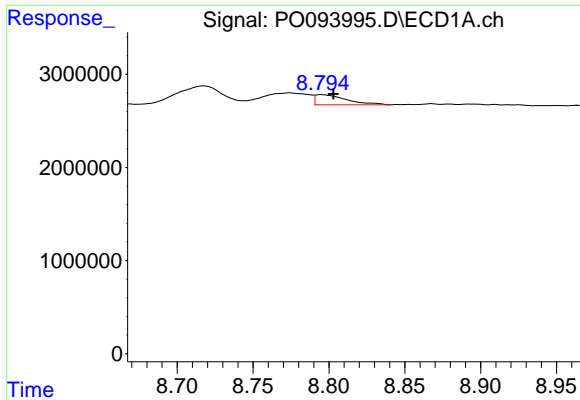
#38 AR-1262-3

R.T.: 8.718 min
 Delta R.T.: 0.006 min
 Response: 4381990
 Conc: 26.75 ng/ml



#38 AR-1262-3

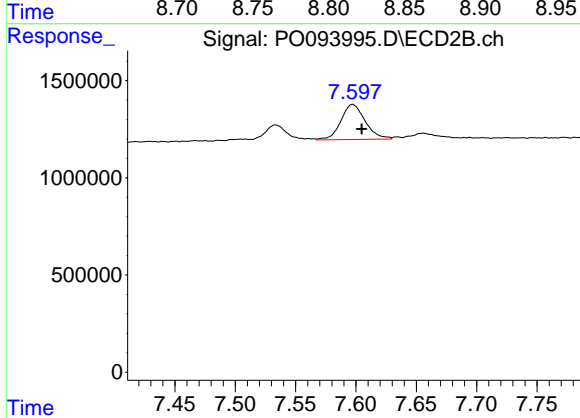
R.T.: 7.533 min
 Delta R.T.: -0.007 min
 Response: 1187758
 Conc: 23.74 ng/ml



#39 AR-1262-4

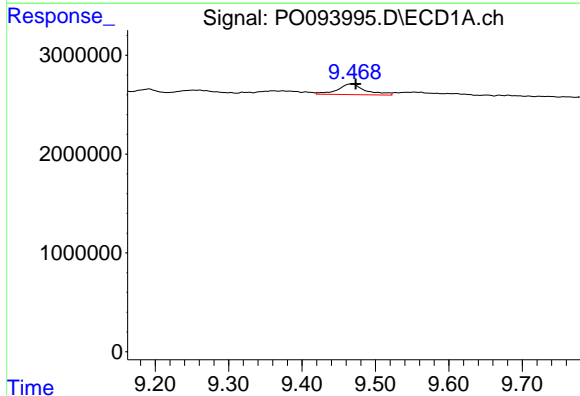
R.T.: 8.795 min
 Delta R.T.: -0.008 min
 Response: 1556025
 Conc: 15.53 ng/ml

Instrument :
 ECD_O
 ClientSampleId :



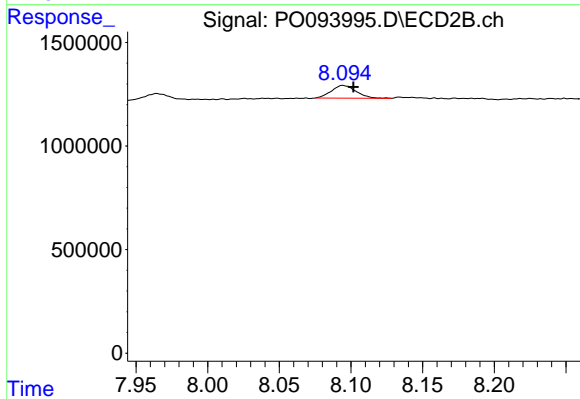
#39 AR-1262-4

R.T.: 7.597 min
 Delta R.T.: -0.007 min
 Response: 2533191
 Conc: 30.55 ng/ml



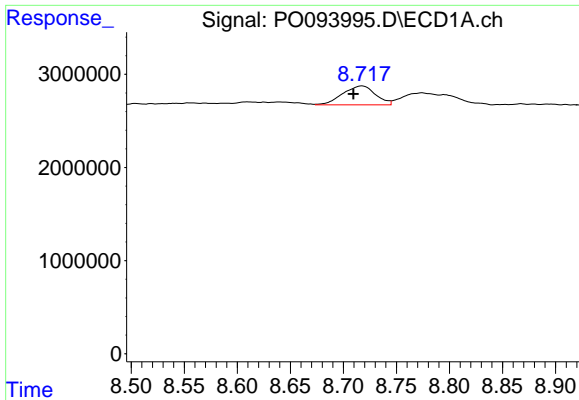
#40 AR-1262-5

R.T.: 9.468 min
 Delta R.T.: -0.005 min
 Response: 2857635
 Conc: 35.50 ng/ml



#40 AR-1262-5

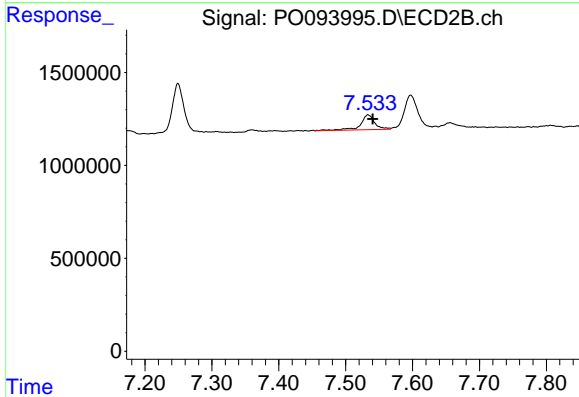
R.T.: 8.094 min
 Delta R.T.: -0.007 min
 Response: 739156
 Conc: 22.72 ng/ml



#41 AR-1268-1

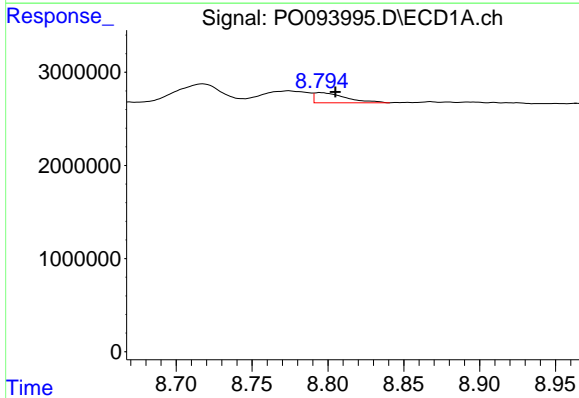
R.T.: 8.718 min
 Delta R.T.: 0.008 min
 Response: 4381990
 Conc: 13.02 ng/ml

Instrument :
 ECD_O
 ClientSampleId :



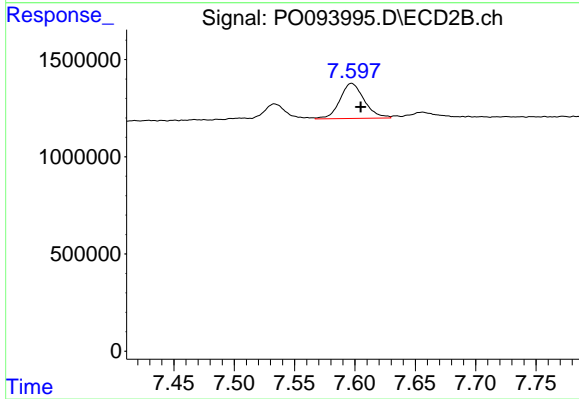
#41 AR-1268-1

R.T.: 7.533 min
 Delta R.T.: -0.007 min
 Response: 1187758
 Conc: 7.78 ng/ml



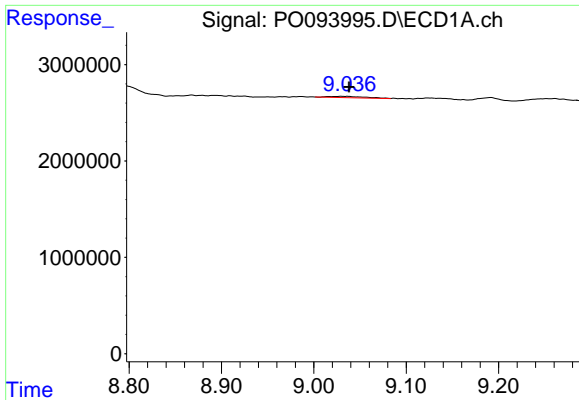
#42 AR-1268-2

R.T.: 8.795 min
 Delta R.T.: -0.010 min
 Response: 1556025
 Conc: 4.83 ng/ml



#42 AR-1268-2

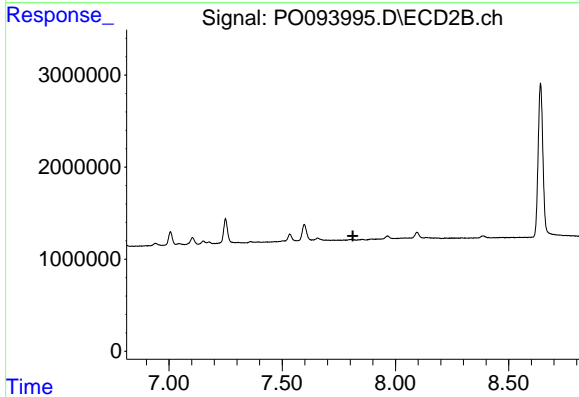
R.T.: 7.597 min
 Delta R.T.: -0.007 min
 Response: 2533191
 Conc: 18.65 ng/ml



#43 AR-1268-3

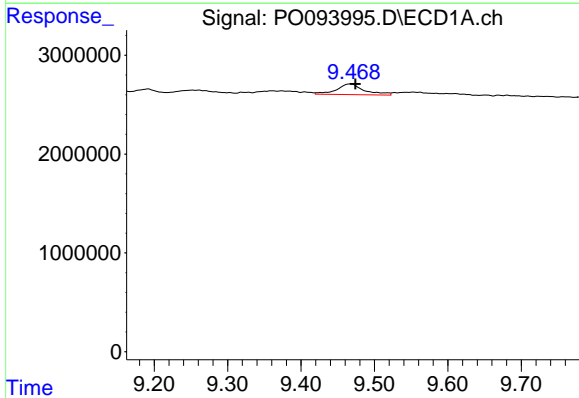
R.T.: 9.031 min
 Delta R.T.: -0.007 min
 Response: 340996
 Conc: 1.20 ng/ml

Instrument :
 ECD_O
 ClientSampleId :



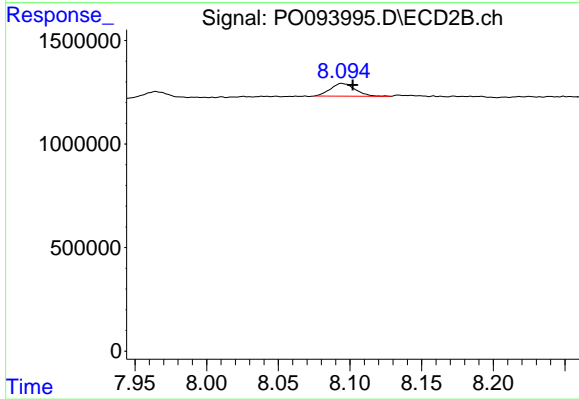
#43 AR-1268-3

R.T.: 0.000 min
 Exp R.T. : 7.812 min
 Response: 0
 Conc: N.D.



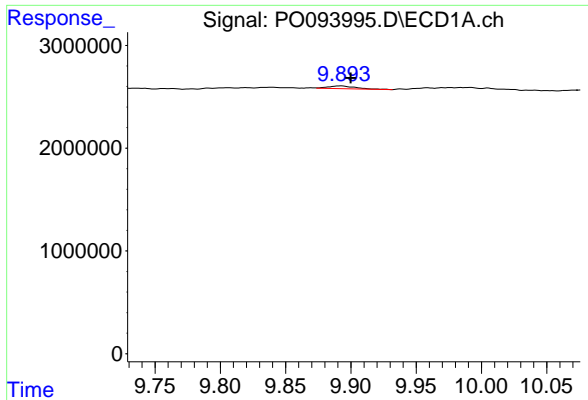
#44 AR-1268-4

R.T.: 9.468 min
 Delta R.T.: -0.006 min
 Response: 2857635
 Conc: 29.56 ng/ml



#44 AR-1268-4

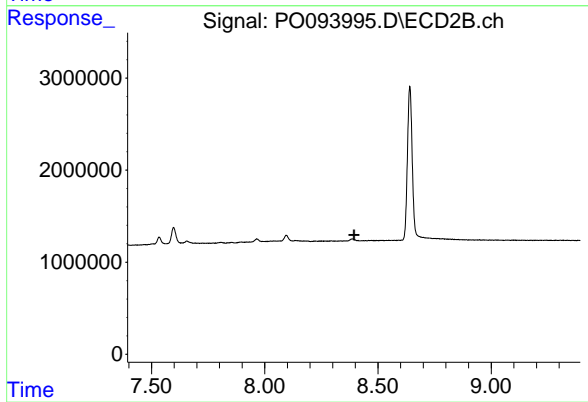
R.T.: 8.094 min
 Delta R.T.: -0.008 min
 Response: 739156
 Conc: 18.67 ng/ml



#45 AR-1268-5

R.T.: 9.893 min
Delta R.T.: -0.007 min
Response: 395538
Conc: 0.47 ng/ml

Instrument :
ECD_O
ClientSampleId :



#45 AR-1268-5

R.T.: 0.000 min
Exp R.T. : 8.394 min
Response: 0
Conc: N.D.