

Data Path : Z:\pestpcbsrv\HPCHEM1\ECD_0\Data\P0040821\
 Data File : P0076871.D
 Signal(s) : Signal #1: ECD1A.CH Signal #2: ECD2B.CH
 Acq On : 08 Apr 2021 11:19
 Operator : DD\AJ
 Sample : AR1660CCC500
 Misc :
 ALS Vial : 3 Sample Multiplier: 1

Instrument :
 ECD_O
 ClientSampled :

Integration File signal 1: autoint1.e
 Integration File signal 2: autoint2.e
 Quant Time: Apr 08 14:57:54 2021
 Quant Method : Z:\pestpcbsrv\HPCHEM1\ECD_0\methods\P0040121.M
 Quant Title : GC EXTRACTABLES
 QLast Update : Fri Apr 02 05:20:17 2021
 Response via : Initial Calibration
 Integrator: ChemStation 6890 Scale Mode: Small noise peaks clipped

Volume Inj. : 2 µl
 Signal #1 Phase : ZB-MR1 Signal #2 Phase: ZB-MR2
 Signal #1 Info : 30Mx0.32mmx 0.50µ Signal #2 Info : 30M x 0.32mm x 0.25µm

Compound	RT#1	RT#2	Resp#1	Resp#2	ng/ml	ng/ml
System Monitoring Compounds						
1) SA Tetrachlo...	4.896	3.893	4919265	2595010	52.888	51.711
2) SA Decachlor...	10.866	9.135	4686732	2075168	50.602	42.764
Target Compounds						
3) L1 AR-1016-1	6.220	5.140	1581562	703060	544.062	501.878
4) L1 AR-1016-2	6.244	5.160	2545844	1417045	540.230	501.204
5) L1 AR-1016-3	6.310	5.349	1537478	661883	538.980	504.813
6) L1 AR-1016-4	6.417	5.398	1190510	625769	523.476	533.953
7) L1 AR-1016-5	6.730	5.624	1245232	638872	574.215	474.295
8) L2 AR-1221-1	0.000	4.151	0	81004	N.D.	164.503 #
9) L2 AR-1221-2	5.249	4.249	201588	118285	300.010	335.415
10) L2 AR-1221-3	5.336	4.338	811881	443887	392.879	391.445
11) L3 AR-1232-1	5.336	4.338	811881	443887	492.700	480.181
12) L3 AR-1232-2	5.922	5.160	1257838	1417045	1392.236	1242.803
13) L3 AR-1232-3	6.244	5.349	2545844	661883	1380.723	1285.677
14) L3 AR-1232-4	6.417	5.442	1190510	690397	1315.524	1468.544
15) L3 AR-1232-5	6.513	5.624	1004560	638872	1756.231	1286.379 #
16) L4 AR-1242-1	6.220	5.140	1581562	703060	749.267	710.193
17) L4 AR-1242-2	6.244	5.160	2545844	1417045	722.728	665.601
18) L4 AR-1242-3	6.310	5.349	1537478	661883	692.324	710.257
19) L4 AR-1242-4	6.417	5.442	1190510	690397	715.714	713.830
20) L4 AR-1242-5	7.200	6.001	173634	546060	88.701	452.751 #
21) L5 AR-1248-1	6.220	5.140	1581562	703060	1041.166	933.531
22) L5 AR-1248-2	6.513	5.398	1004560	625769	433.991	431.009
23) L5 AR-1248-3	6.730	5.442	1245232	690397	442.809	474.226
24) L5 AR-1248-4	7.160	5.624	227375	638872	67.450	374.205 #
25) L5 AR-1248-5	7.200	6.048	173634	88462	50.380	44.014
26) L6 AR-1254-1	7.128	6.001	727878	546060	228.998	208.330
27) L6 AR-1254-2	7.357	6.160	908032	496943	177.223	217.005
28) L6 AR-1254-3	7.739	6.594	557370	1001073	101.146	283.246 #
29) L6 AR-1254-4	8.035	6.817	573358	138548	145.623	66.016 #
30) L6 AR-1254-5	8.462	7.239	2997573	1638329	681.557	502.553 #
31) L7 AR-1260-1	7.905	6.711	2211921	1362855	552.322	521.575
32) L7 AR-1260-2	8.171	6.909	2639685	1577229	532.915	499.490
33) L7 AR-1260-3	8.537	7.061	2007872	1393639	517.087	477.005
34) L7 AR-1260-4	8.767	7.540	2281589	1204146	529.760	481.340
35) L7 AR-1260-5	9.088	7.789	4550508	2746690	533.979	465.650
36) L8 AR-1262-1	8.537	7.239	2007872	1638329	362.281	925.563 #
37) L8 AR-1262-2	9.088	7.789	4550508	2746690	465.116	453.513
38) L8 AR-1262-3	9.415f	8.072	2906767	651408	450.557	258.975 #
39) L8 AR-1262-4	9.467f	8.135	1828294	2013576	364.655	444.214
40) L8 AR-1262-5	10.138	8.633	1351884	716830	390.905	361.938
41) L9 AR-1268-1	9.415f	8.072	2906767	651408	238.710	88.613 #

Data Path : Z:\pestpcbsrv\HPCHEM1\ECD_0\Data\P0040821\
 Data File : P0076871.D
 Signal(s) : Signal #1: ECD1A.CH Signal #2: ECD2B.CH
 Acq On : 08 Apr 2021 11:19
 Operator : DD\AJ
 Sample : AR1660CCC500
 Misc :
 ALS Vial : 3 Sample Multiplier: 1

Instrument :
 ECD_0
 ClientSampleId :

Integration File signal 1: autoint1.e
 Integration File signal 2: autoint2.e
 Quant Time: Apr 08 14:57:54 2021
 Quant Method : Z:\pestpcbsrv\HPCHEM1\ECD_0\methods\P0040121.M
 Quant Title : GC EXTRACTABLES
 QLast Update : Fri Apr 02 05:20:17 2021
 Response via : Initial Calibration
 Integrator: ChemStation 6890 Scale Mode: Small noise peaks clipped

Volume Inj. : 2 µl
 Signal #1 Phase : ZB-MR1 Signal #2 Phase: ZB-MR2
 Signal #1 Info : 30Mx0.32mmx 0.50µ Signal #2 Info : 30M x 0.32mm x 0.25µm

	Compound	RT#1	RT#2	Resp#1	Resp#2	ng/ml	ng/ml
42)	L9 AR-1268-2	9.467f	8.135	1828294	2013576	161.708	301.366 #
43)	L9 AR-1268-3	0.000	8.340	0	36013	N.D.	6.217 #
44)	L9 AR-1268-4	10.138	8.633	1351884	716830	345.855	324.537
45)	L9 AR-1268-5	10.541	8.904	378682	196070	11.527	11.882

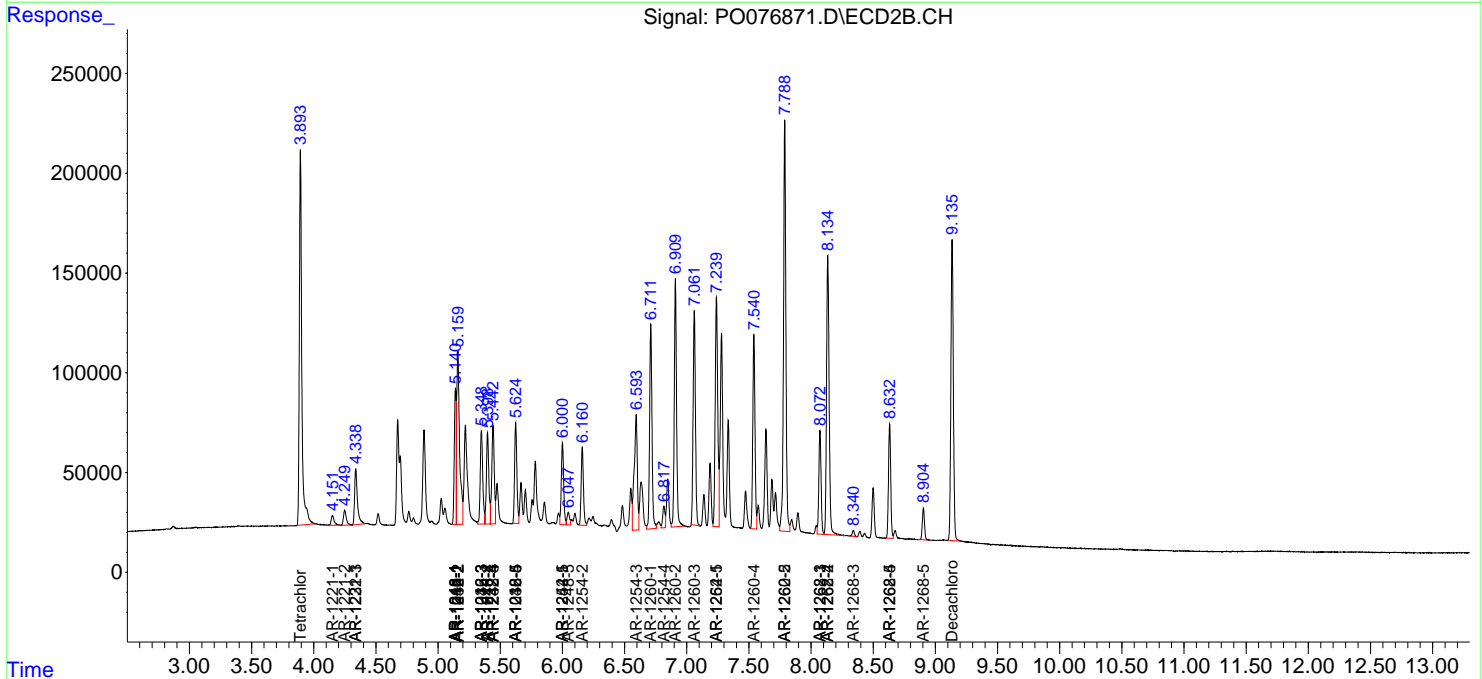
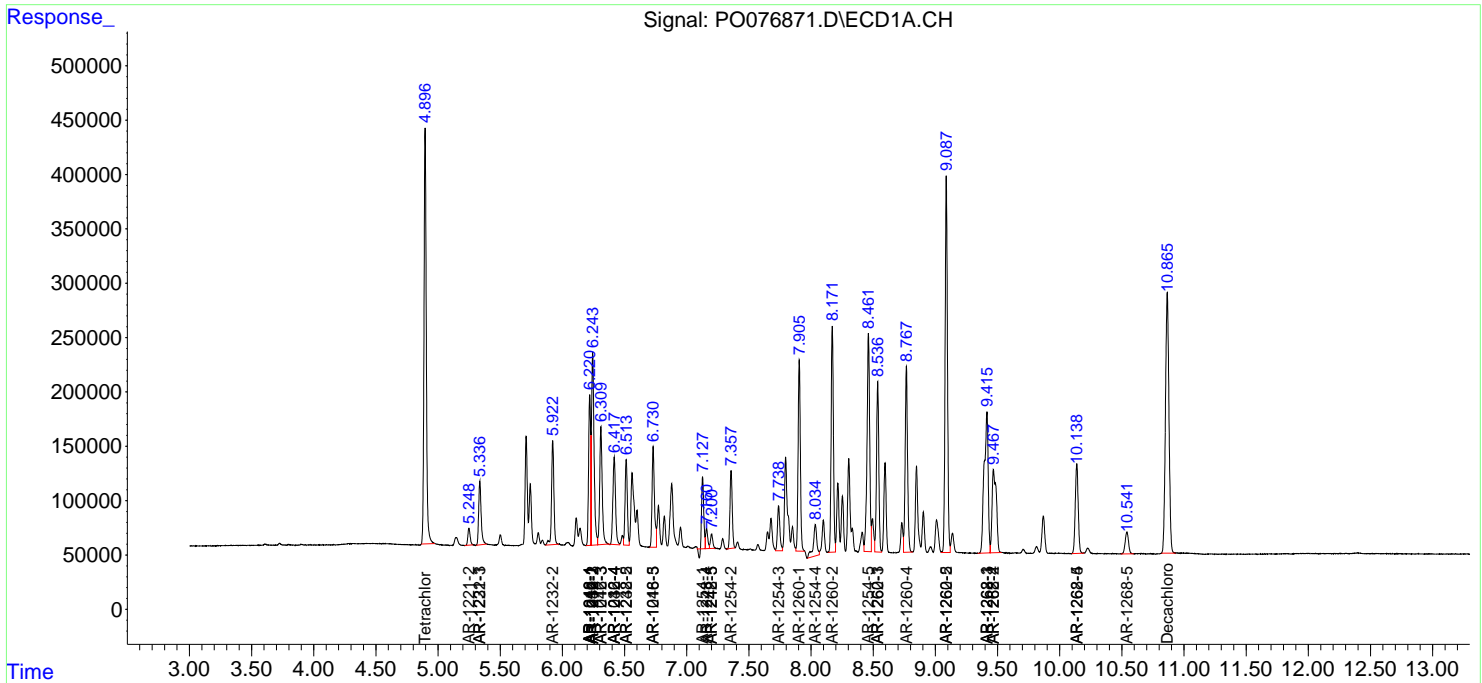
(f)=RT Delta > 1/2 Window (#)=Amounts differ by > 25% (m)=manual int.

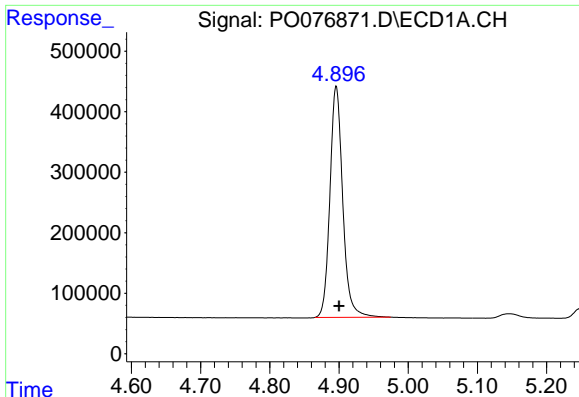
Data Path : Z:\pestpcbsrv\HPCHEM1\ECD_0\Data\P0040821\
 Data File : P0076871.D
 Signal(s) : Signal #1: ECD1A.CH Signal #2: ECD2B.CH
 Acq On : 08 Apr 2021 11:19
 Operator : DD\AJ
 Sample : AR1660CCC500
 Misc :
 ALS Vial : 3 Sample Multiplier: 1

Instrument :
 ECD_O
 ClientSampled :

Integration File signal 1: autoint1.e
 Integration File signal 2: autoint2.e
 Quant Time: Apr 08 14:57:54 2021
 Quant Method : Z:\pestpcbsrv\HPCHEM1\ECD_0\methods\P0040121.M
 Quant Title : GC EXTRACTABLES
 QLast Update : Fri Apr 02 05:20:17 2021
 Response via : Initial Calibration
 Integrator: ChemStation 6890 Scale Mode: Small noise peaks clipped

Volume Inj. : 2 µl
 Signal #1 Phase : ZB-MR1 Signal #2 Phase: ZB-MR2
 Signal #1 Info : 30Mx0.32mmx 0.50µ Signal #2 Info : 30M x 0.32mm x 0.25µm

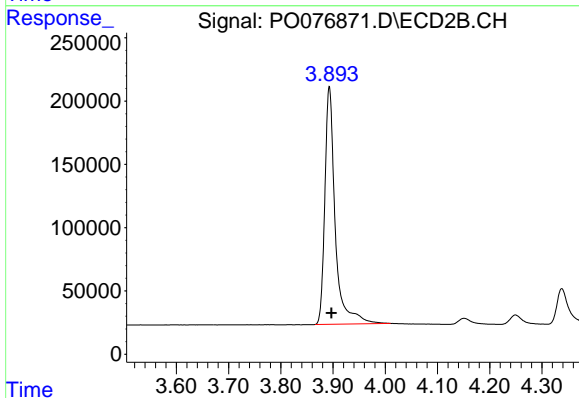




#1 Tetrachloro-m-xylene

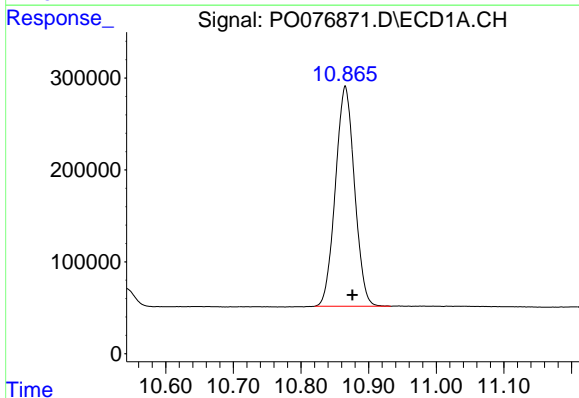
R.T.: 4.896 min
 Delta R.T.: -0.004 min
 Response: 4919265
 Conc: 52.89 ng/ml

Instrument :
 ECD_O
 ClientSampleId :



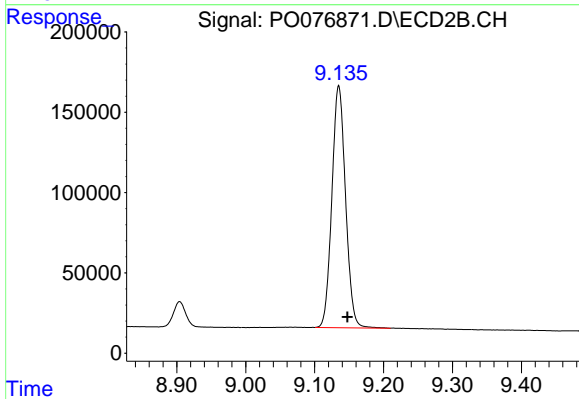
#1 Tetrachloro-m-xylene

R.T.: 3.893 min
 Delta R.T.: -0.004 min
 Response: 2595010
 Conc: 51.71 ng/ml



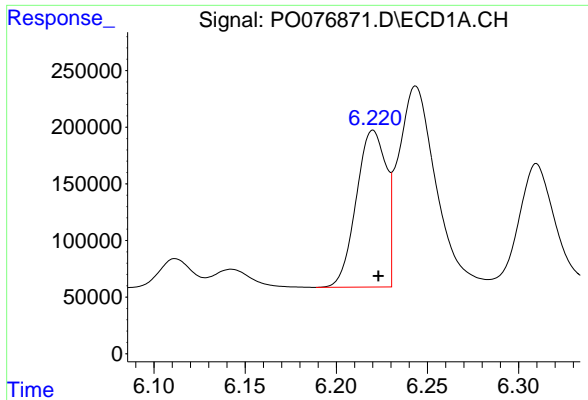
#2 Decachlorobiphenyl

R.T.: 10.866 min
 Delta R.T.: -0.010 min
 Response: 4686732
 Conc: 50.60 ng/ml



#2 Decachlorobiphenyl

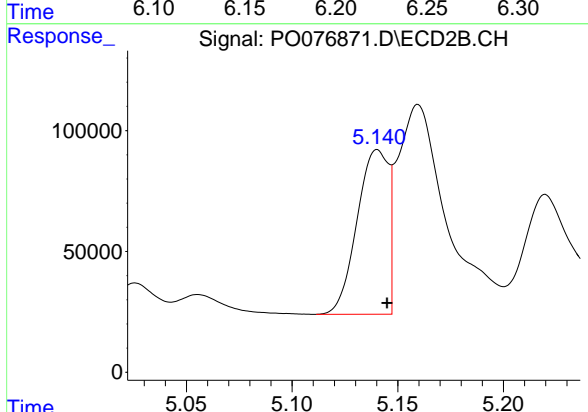
R.T.: 9.135 min
 Delta R.T.: -0.012 min
 Response: 2075168
 Conc: 42.76 ng/ml



#3 AR-1016-1

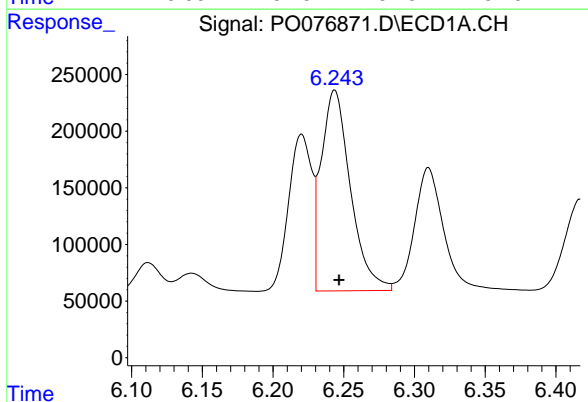
R.T.: 6.220 min
 Delta R.T.: -0.003 min
 Response: 1581562
 Conc: 544.06 ng/ml

Instrument :
 ECD_O
 ClientSampled :



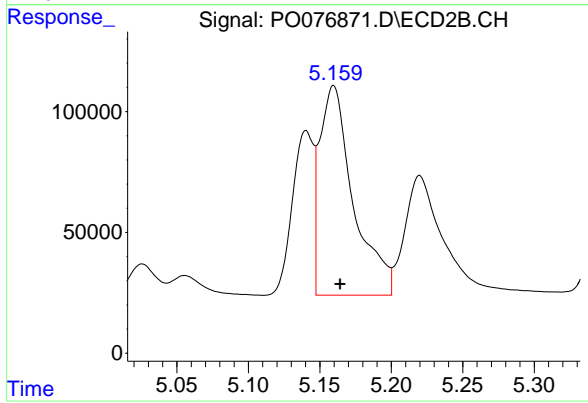
#3 AR-1016-1

R.T.: 5.140 min
 Delta R.T.: -0.005 min
 Response: 703060
 Conc: 501.88 ng/ml



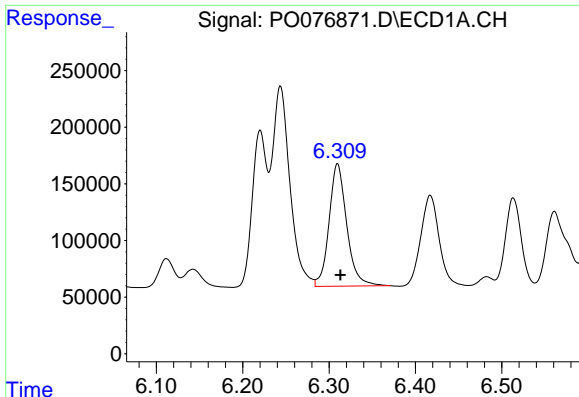
#4 AR-1016-2

R.T.: 6.244 min
 Delta R.T.: -0.003 min
 Response: 2545844
 Conc: 540.23 ng/ml



#4 AR-1016-2

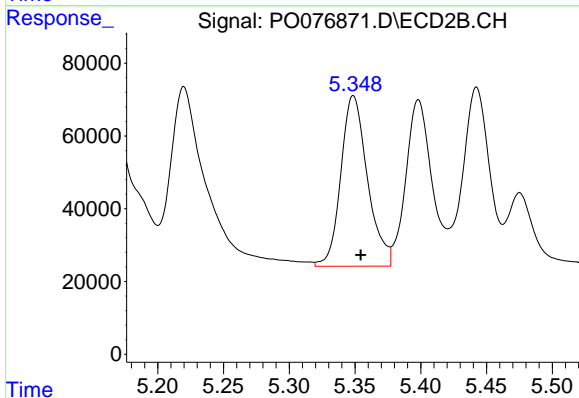
R.T.: 5.160 min
 Delta R.T.: -0.005 min
 Response: 1417045
 Conc: 501.20 ng/ml



#5 AR-1016-3

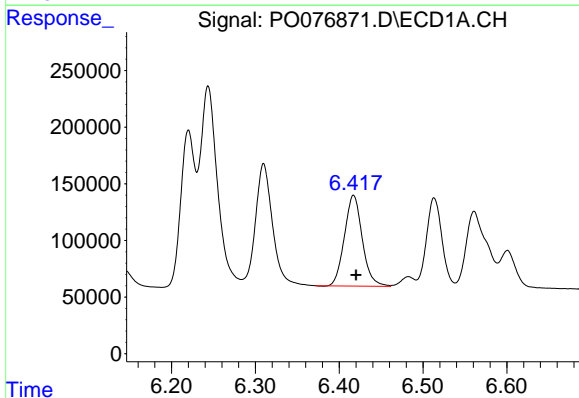
R.T.: 6.310 min
 Delta R.T.: -0.003 min
 Response: 1537478
 Conc: 538.98 ng/ml

Instrument :
 ECD_O
 ClientSampled :



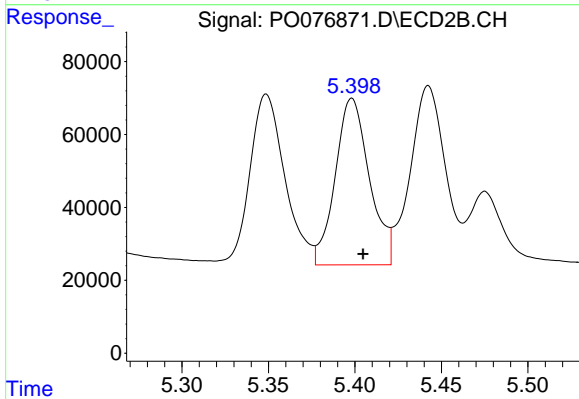
#5 AR-1016-3

R.T.: 5.349 min
 Delta R.T.: -0.006 min
 Response: 661883
 Conc: 504.81 ng/ml



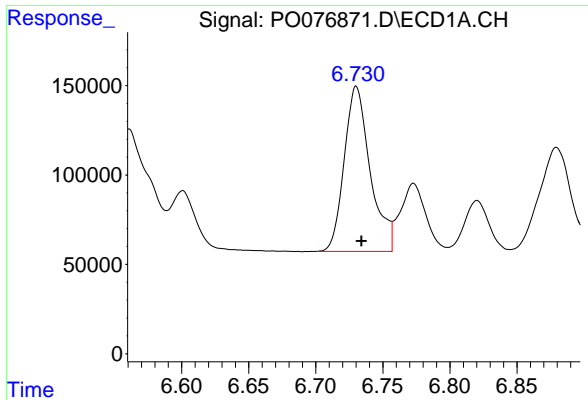
#6 AR-1016-4

R.T.: 6.417 min
 Delta R.T.: -0.003 min
 Response: 1190510
 Conc: 523.48 ng/ml



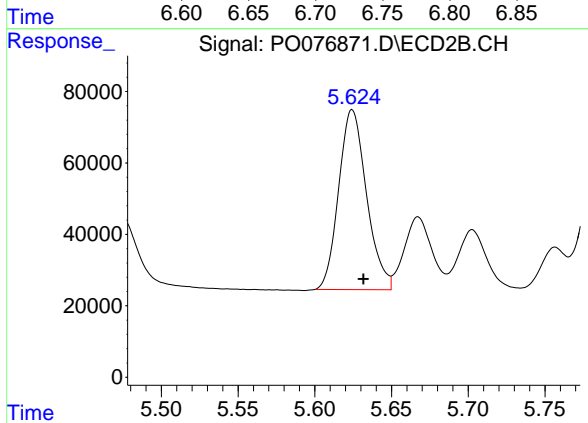
#6 AR-1016-4

R.T.: 5.398 min
 Delta R.T.: -0.007 min
 Response: 625769
 Conc: 533.95 ng/ml

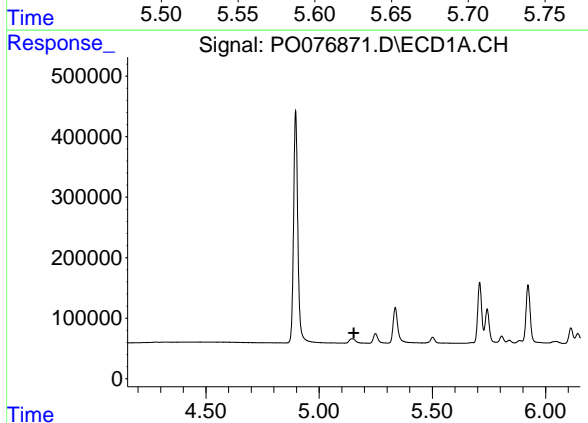


#7 AR-1016-5
 R.T.: 6.730 min
 Delta R.T.: -0.004 min
 Response: 1245232
 Conc: 574.22 ng/ml

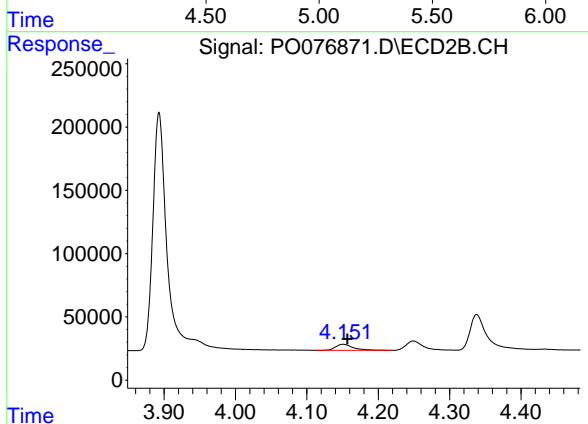
Instrument :
 ECD_O
 ClientSampled :



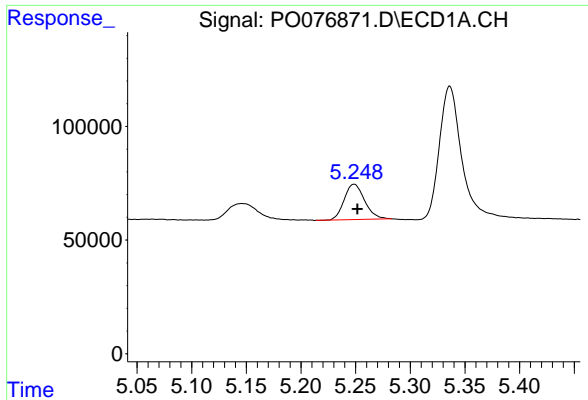
#7 AR-1016-5
 R.T.: 5.624 min
 Delta R.T.: -0.007 min
 Response: 638872
 Conc: 474.30 ng/ml



#8 AR-1221-1
 R.T.: 0.000 min
 Exp R.T. : 5.153 min
 Response: 0
 Conc: N.D.

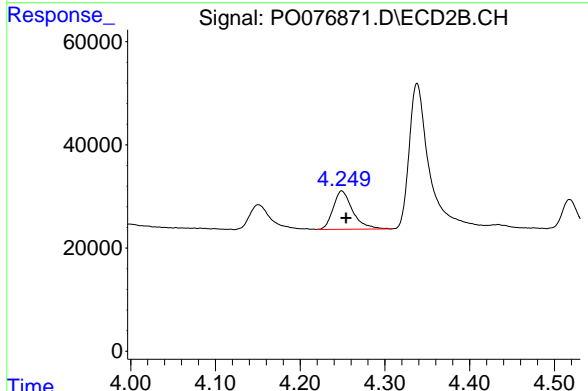


#8 AR-1221-1
 R.T.: 4.151 min
 Delta R.T.: -0.006 min
 Response: 81004
 Conc: 164.50 ng/ml

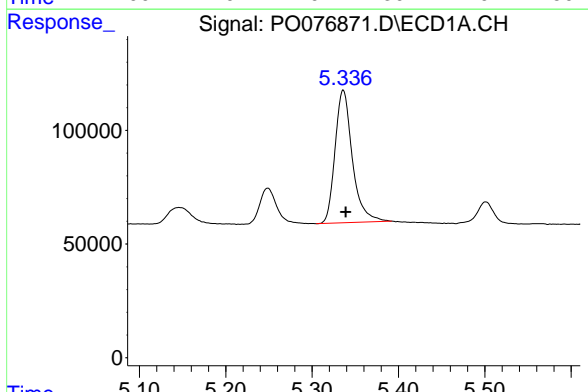


#9 AR-1221-2
 R.T.: 5.249 min
 Delta R.T.: -0.003 min
 Response: 201588
 Conc: 300.01 ng/ml

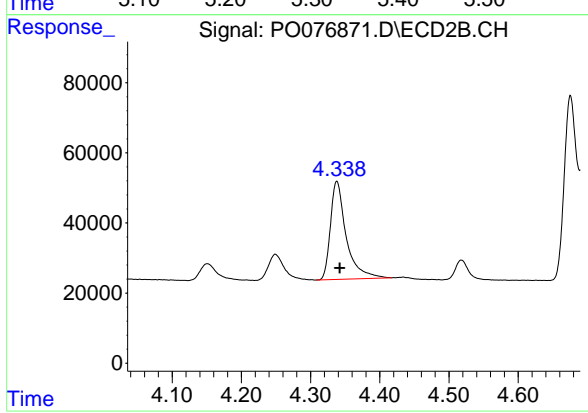
Instrument :
 ECD_O
 ClientSampleId :



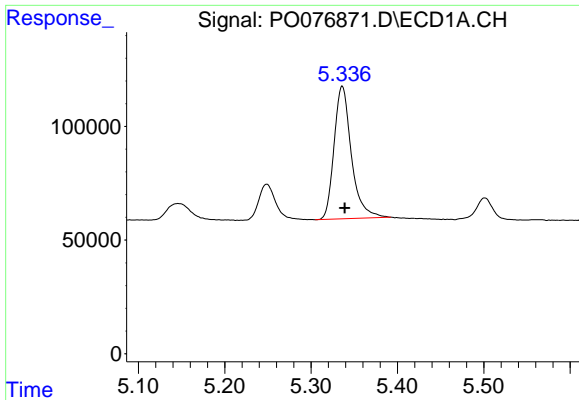
#9 AR-1221-2
 R.T.: 4.249 min
 Delta R.T.: -0.005 min
 Response: 118285
 Conc: 335.42 ng/ml



#10 AR-1221-3
 R.T.: 5.336 min
 Delta R.T.: -0.003 min
 Response: 811881
 Conc: 392.88 ng/ml



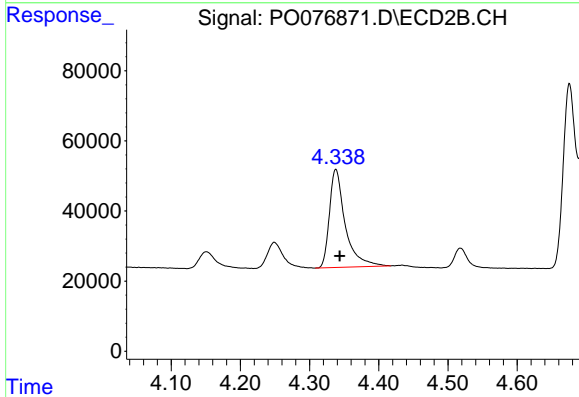
#10 AR-1221-3
 R.T.: 4.338 min
 Delta R.T.: -0.004 min
 Response: 443887
 Conc: 391.45 ng/ml



#11 AR-1232-1

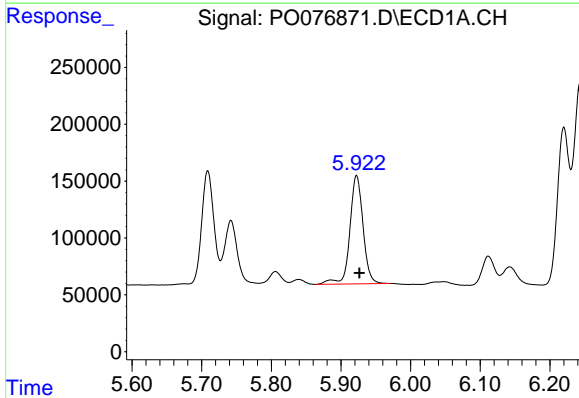
R.T.: 5.336 min
 Delta R.T.: -0.003 min
 Response: 811881
 Conc: 492.70 ng/ml

Instrument :
 ECD_O
 ClientSampled :



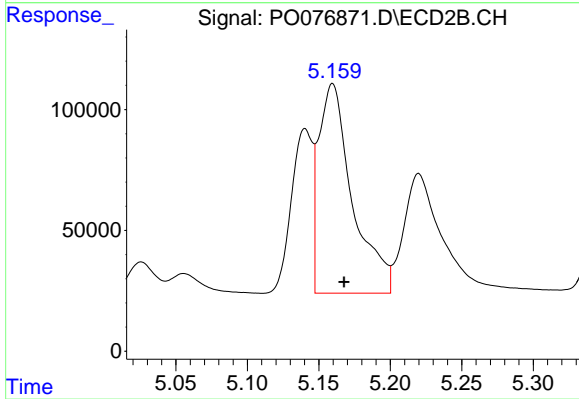
#11 AR-1232-1

R.T.: 4.338 min
 Delta R.T.: -0.006 min
 Response: 443887
 Conc: 480.18 ng/ml



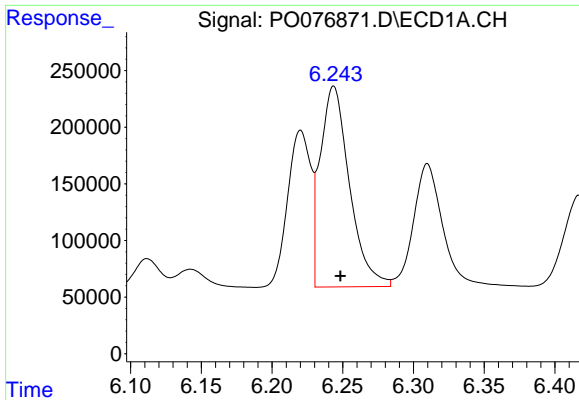
#12 AR-1232-2

R.T.: 5.922 min
 Delta R.T.: -0.004 min
 Response: 1257838
 Conc: 1392.24 ng/ml



#12 AR-1232-2

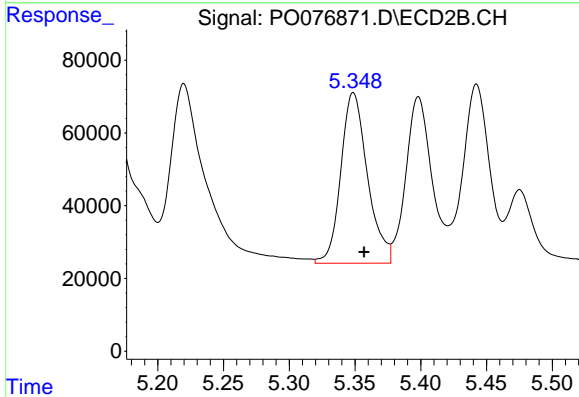
R.T.: 5.160 min
 Delta R.T.: -0.008 min
 Response: 1417045
 Conc: 1242.80 ng/ml



#13 AR-1232-3

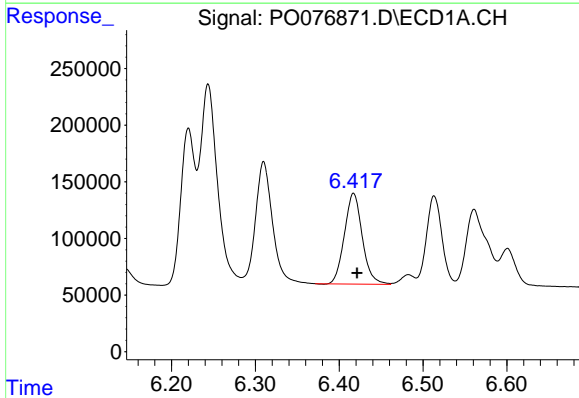
R.T.: 6.244 min
 Delta R.T.: -0.005 min
 Response: 2545844
 Conc: 1380.72 ng/ml

Instrument :
 ECD_O
 ClientSampled :



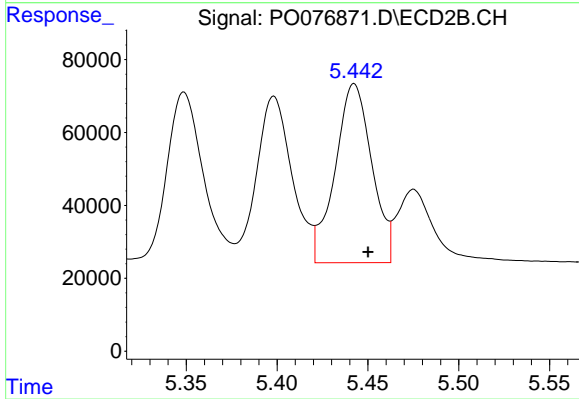
#13 AR-1232-3

R.T.: 5.349 min
 Delta R.T.: -0.008 min
 Response: 661883
 Conc: 1285.68 ng/ml



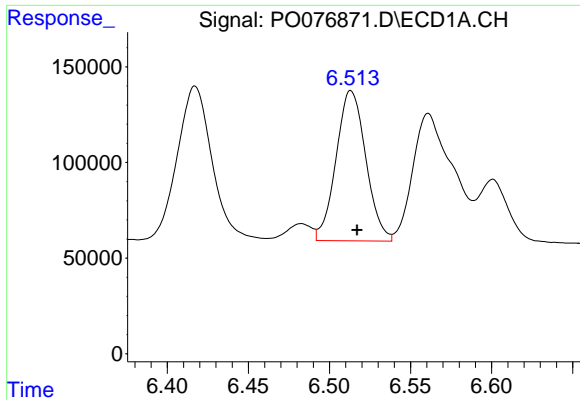
#14 AR-1232-4

R.T.: 6.417 min
 Delta R.T.: -0.004 min
 Response: 1190510
 Conc: 1315.52 ng/ml



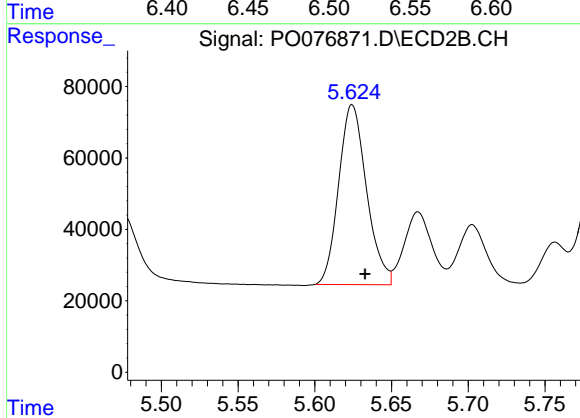
#14 AR-1232-4

R.T.: 5.442 min
 Delta R.T.: -0.008 min
 Response: 690397
 Conc: 1468.54 ng/ml

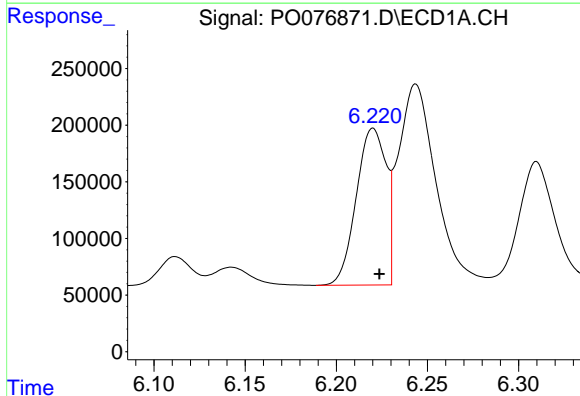


#15 AR-1232-5
 R.T.: 6.513 min
 Delta R.T.: -0.004 min
 Response: 1004560
 Conc: 1756.23 ng/ml

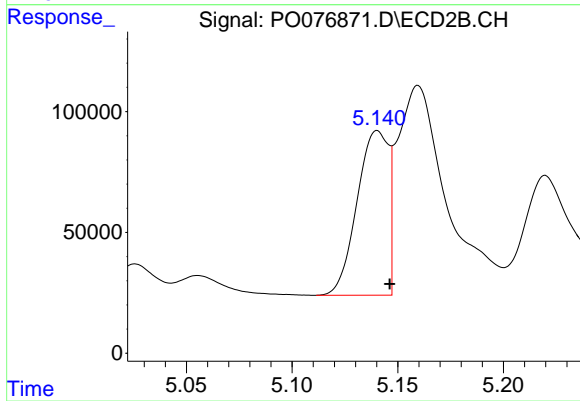
Instrument :
 ECD_O
 ClientSampled :



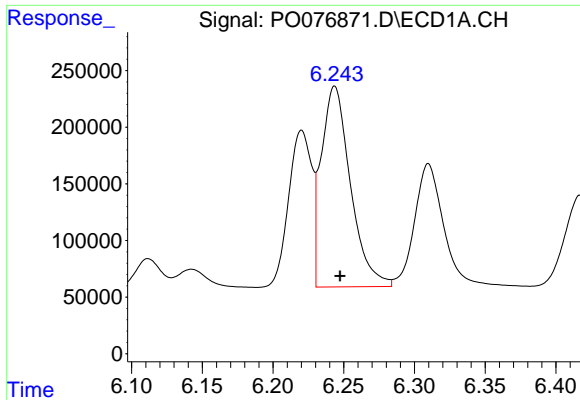
#15 AR-1232-5
 R.T.: 5.624 min
 Delta R.T.: -0.009 min
 Response: 638872
 Conc: 1286.38 ng/ml



#16 AR-1242-1
 R.T.: 6.220 min
 Delta R.T.: -0.003 min
 Response: 1581562
 Conc: 749.27 ng/ml



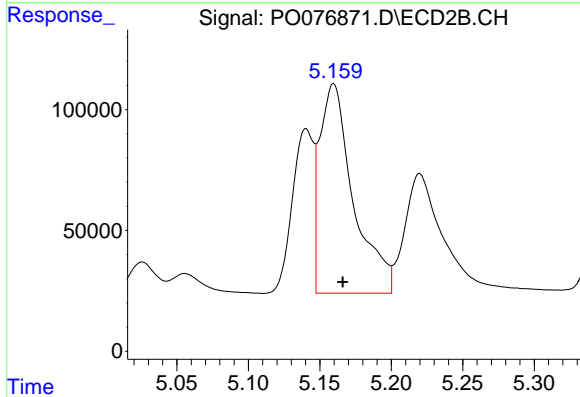
#16 AR-1242-1
 R.T.: 5.140 min
 Delta R.T.: -0.006 min
 Response: 703060
 Conc: 710.19 ng/ml



#17 AR-1242-2

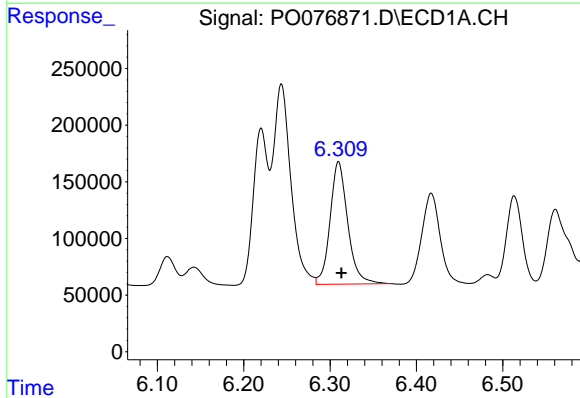
R.T.: 6.244 min
 Delta R.T.: -0.004 min
 Response: 2545844
 Conc: 722.73 ng/ml

Instrument :
 ECD_O
 ClientSampled :



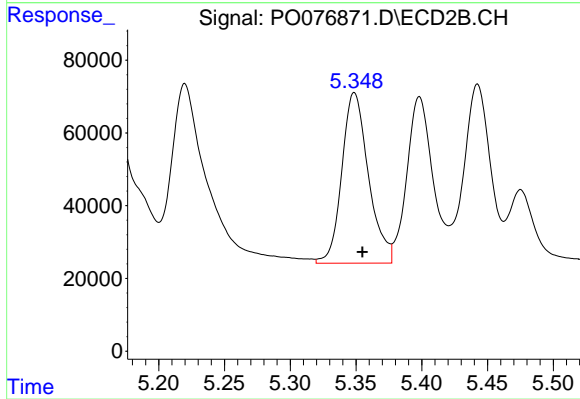
#17 AR-1242-2

R.T.: 5.160 min
 Delta R.T.: -0.006 min
 Response: 1417045
 Conc: 665.60 ng/ml



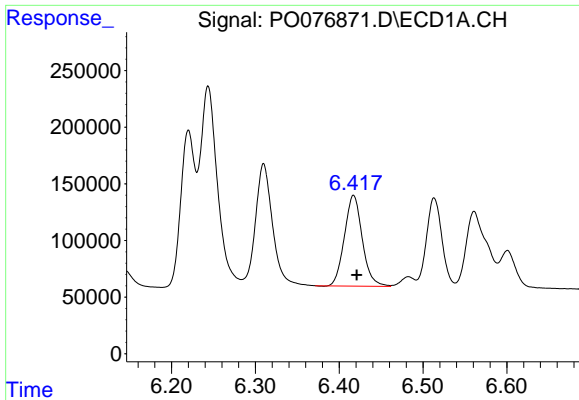
#18 AR-1242-3

R.T.: 6.310 min
 Delta R.T.: -0.003 min
 Response: 1537478
 Conc: 692.32 ng/ml



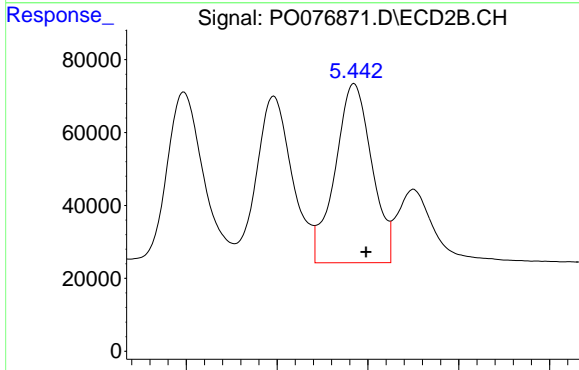
#18 AR-1242-3

R.T.: 5.349 min
 Delta R.T.: -0.006 min
 Response: 661883
 Conc: 710.26 ng/ml

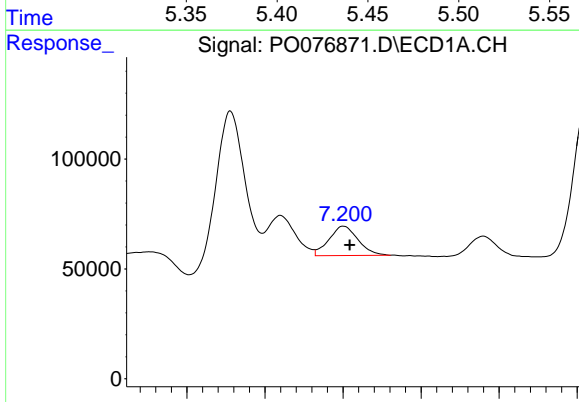


#19 AR-1242-4
 R.T.: 6.417 min
 Delta R.T.: -0.004 min
 Response: 1190510
 Conc: 715.71 ng/ml

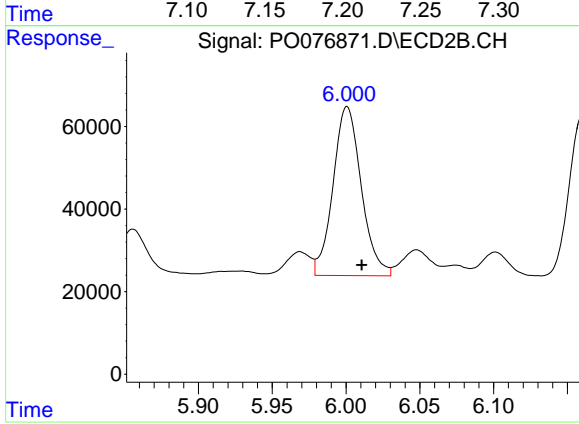
Instrument :
 ECD_O
 ClientSampled :



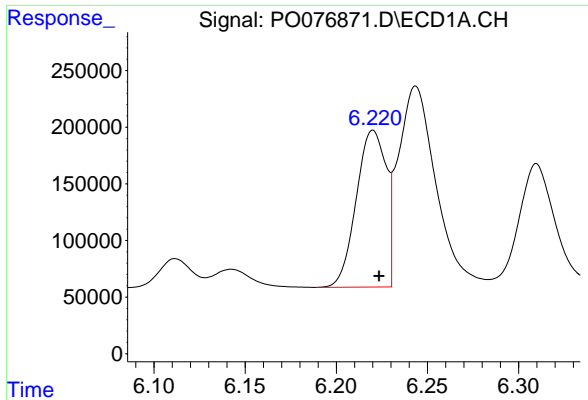
#19 AR-1242-4
 R.T.: 5.442 min
 Delta R.T.: -0.007 min
 Response: 690397
 Conc: 713.83 ng/ml



#20 AR-1242-5
 R.T.: 7.200 min
 Delta R.T.: -0.004 min
 Response: 173634
 Conc: 88.70 ng/ml

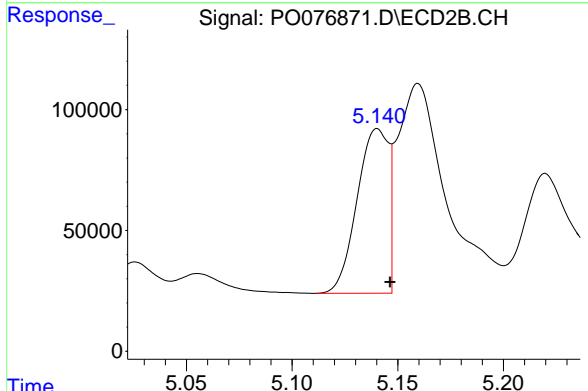


#20 AR-1242-5
 R.T.: 6.001 min
 Delta R.T.: -0.010 min
 Response: 546060
 Conc: 452.75 ng/ml

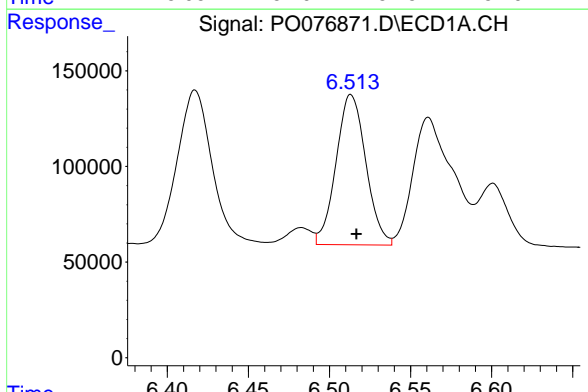


#21 AR-1248-1
 R.T.: 6.220 min
 Delta R.T.: -0.003 min
 Response: 1581562
 Conc: 1041.17 ng/ml

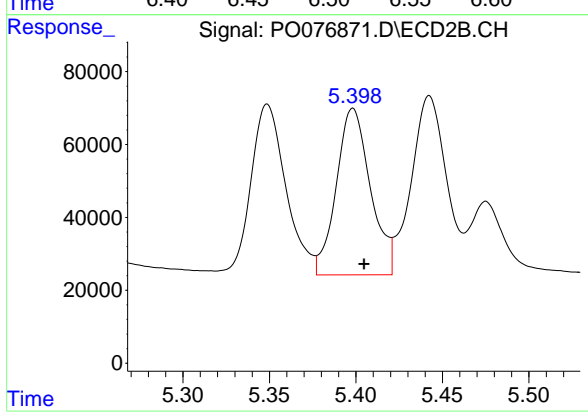
Instrument :
 ECD_O
 ClientSampleId :



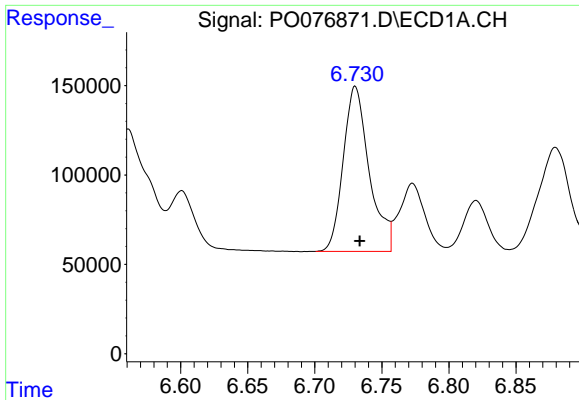
#21 AR-1248-1
 R.T.: 5.140 min
 Delta R.T.: -0.006 min
 Response: 703060
 Conc: 933.53 ng/ml



#22 AR-1248-2
 R.T.: 6.513 min
 Delta R.T.: -0.003 min
 Response: 1004560
 Conc: 433.99 ng/ml



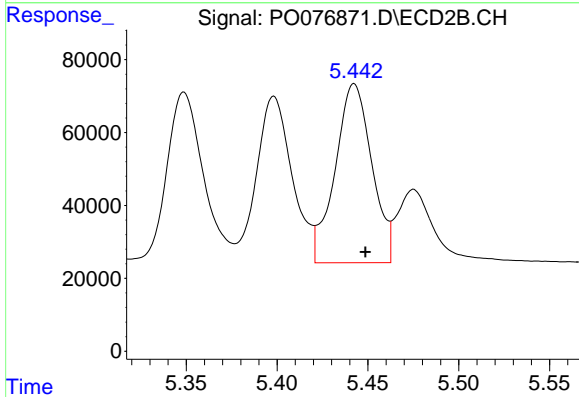
#22 AR-1248-2
 R.T.: 5.398 min
 Delta R.T.: -0.006 min
 Response: 625769
 Conc: 431.01 ng/ml



#23 AR-1248-3

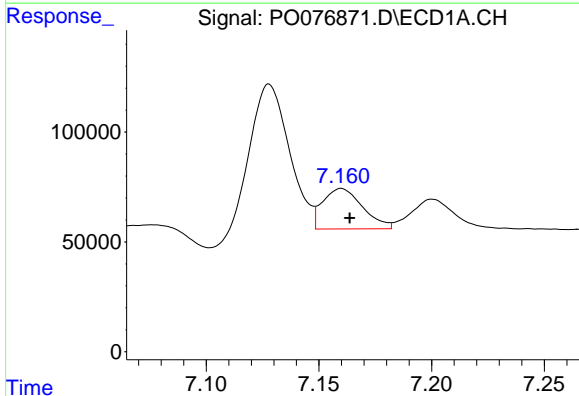
R.T.: 6.730 min
 Delta R.T.: -0.003 min
 Response: 1245232
 Conc: 442.81 ng/ml

Instrument :
 ECD_O
 ClientSampled :



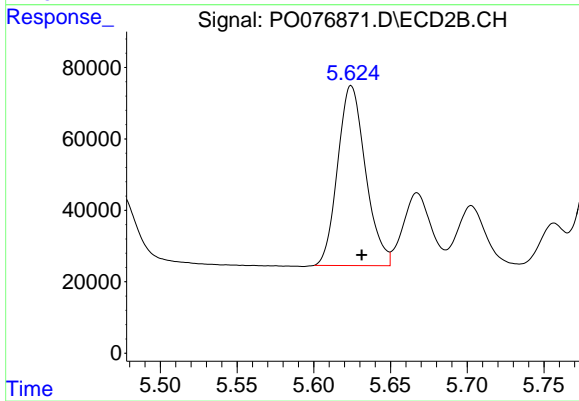
#23 AR-1248-3

R.T.: 5.442 min
 Delta R.T.: -0.006 min
 Response: 690397
 Conc: 474.23 ng/ml



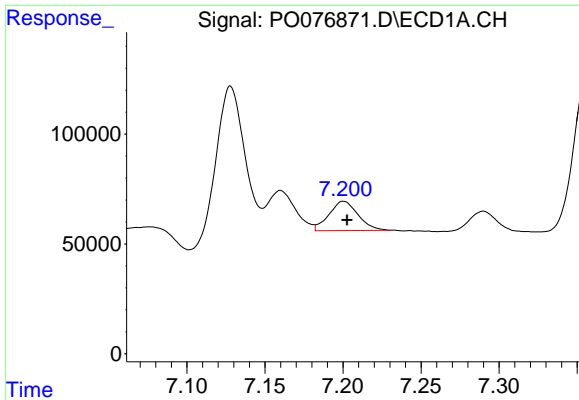
#24 AR-1248-4

R.T.: 7.160 min
 Delta R.T.: -0.004 min
 Response: 227375
 Conc: 67.45 ng/ml



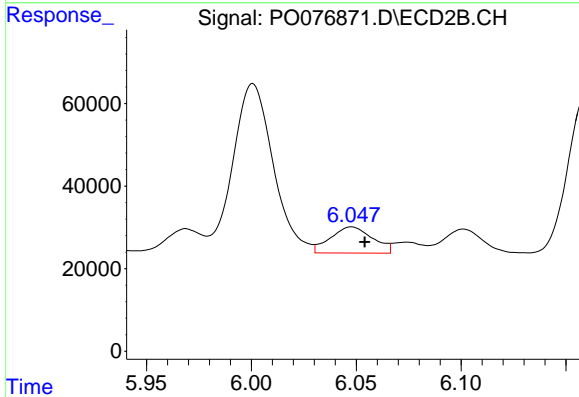
#24 AR-1248-4

R.T.: 5.624 min
 Delta R.T.: -0.007 min
 Response: 638872
 Conc: 374.20 ng/ml

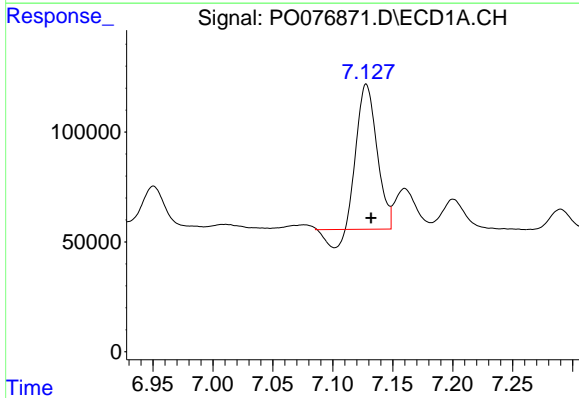


#25 AR-1248-5
 R.T.: 7.200 min
 Delta R.T.: -0.002 min
 Response: 173634
 Conc: 50.38 ng/ml

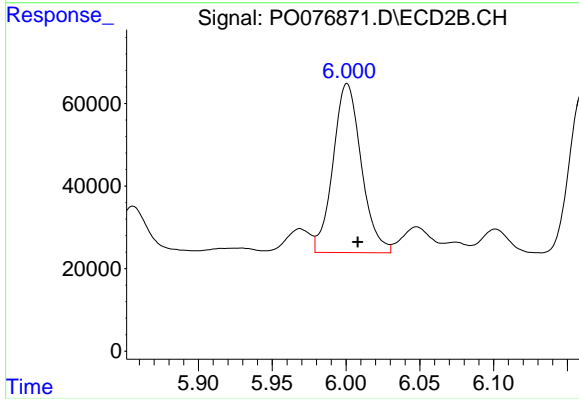
Instrument :
 ECD_O
 ClientSampled :



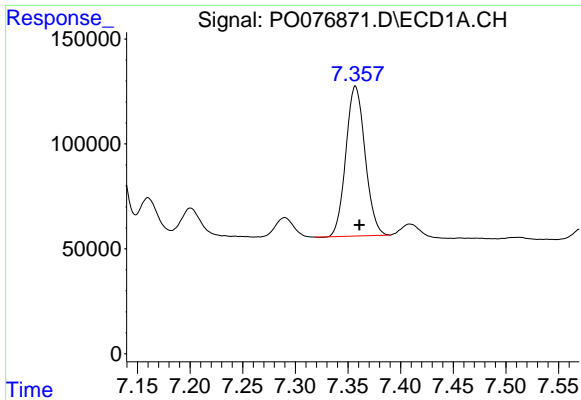
#25 AR-1248-5
 R.T.: 6.048 min
 Delta R.T.: -0.006 min
 Response: 88462
 Conc: 44.01 ng/ml



#26 AR-1254-1
 R.T.: 7.128 min
 Delta R.T.: -0.004 min
 Response: 727878
 Conc: 229.00 ng/ml

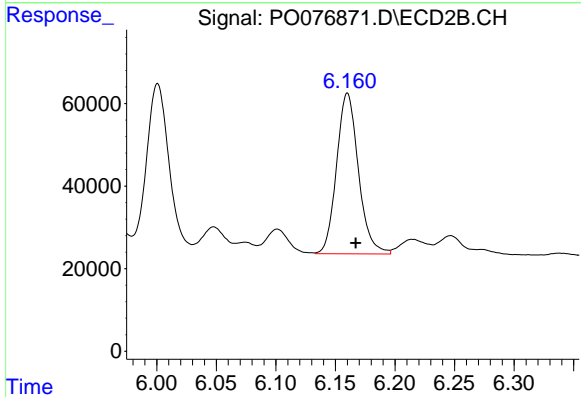


#26 AR-1254-1
 R.T.: 6.001 min
 Delta R.T.: -0.007 min
 Response: 546060
 Conc: 208.33 ng/ml

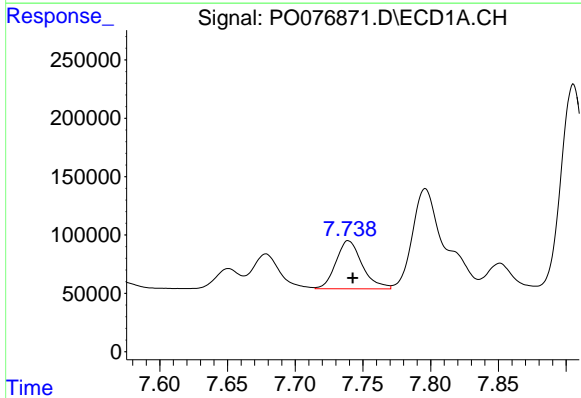


#27 AR-1254-2
 R.T.: 7.357 min
 Delta R.T.: -0.004 min
 Response: 908032
 Conc: 177.22 ng/ml

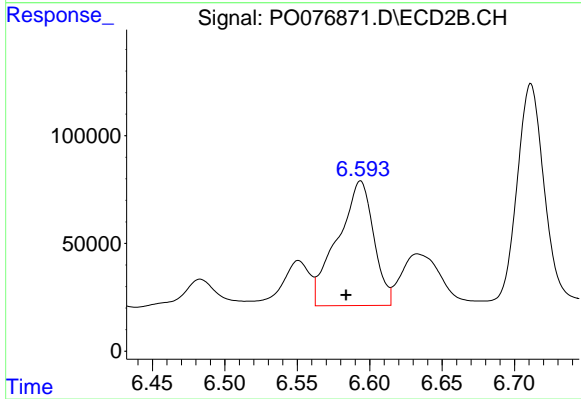
Instrument :
 ECD_O
 ClientSampled :



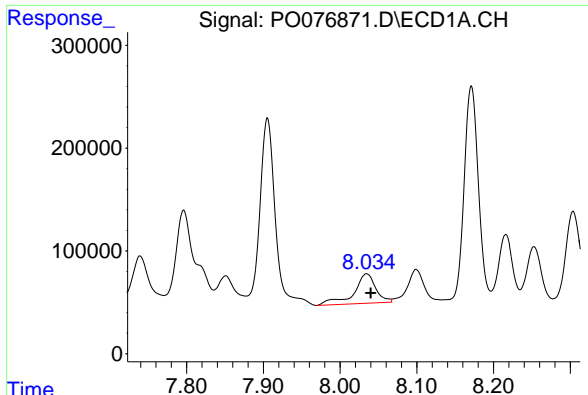
#27 AR-1254-2
 R.T.: 6.160 min
 Delta R.T.: -0.007 min
 Response: 496943
 Conc: 217.00 ng/ml



#28 AR-1254-3
 R.T.: 7.739 min
 Delta R.T.: -0.003 min
 Response: 557370
 Conc: 101.15 ng/ml

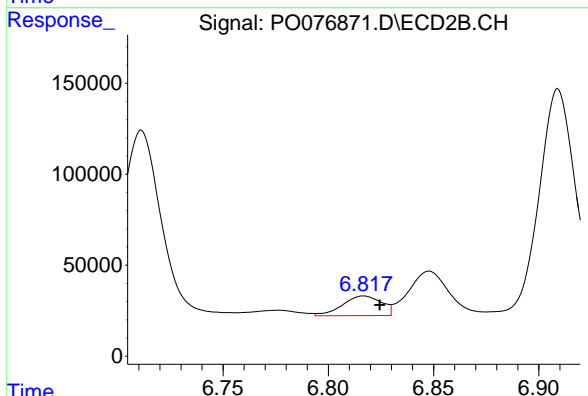


#28 AR-1254-3
 R.T.: 6.594 min
 Delta R.T.: 0.010 min
 Response: 1001073
 Conc: 283.25 ng/ml

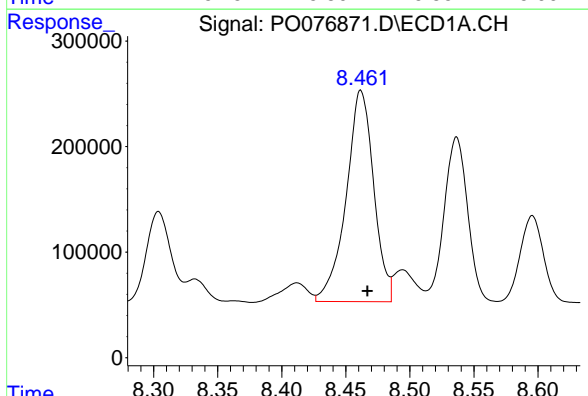


#29 AR-1254-4
 R.T.: 8.035 min
 Delta R.T.: -0.005 min
 Response: 573358
 Conc: 145.62 ng/ml

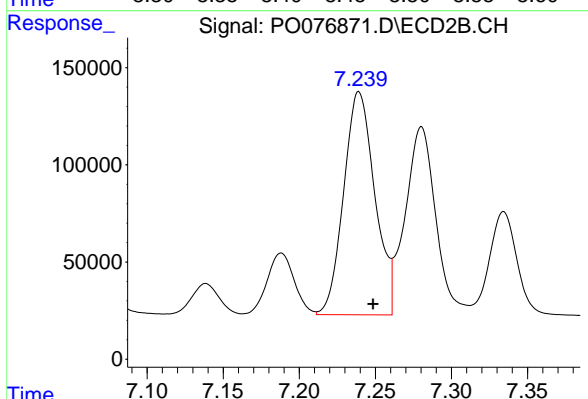
Instrument :
 ECD_O
 ClientSampleId :



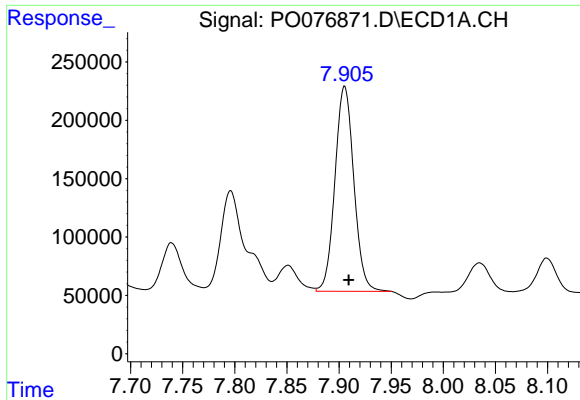
#29 AR-1254-4
 R.T.: 6.817 min
 Delta R.T.: -0.008 min
 Response: 138548
 Conc: 66.02 ng/ml



#30 AR-1254-5
 R.T.: 8.462 min
 Delta R.T.: -0.005 min
 Response: 2997573
 Conc: 681.56 ng/ml



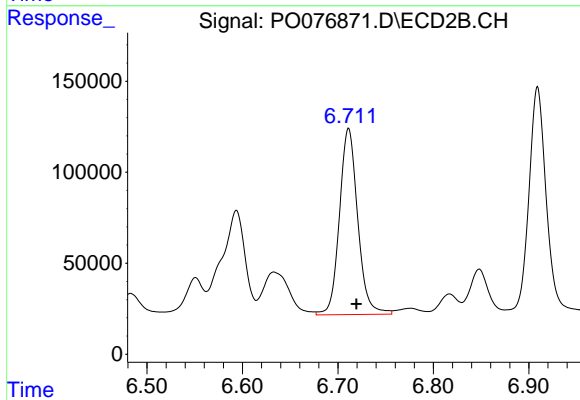
#30 AR-1254-5
 R.T.: 7.239 min
 Delta R.T.: -0.009 min
 Response: 1638329
 Conc: 502.55 ng/ml



#31 AR-1260-1

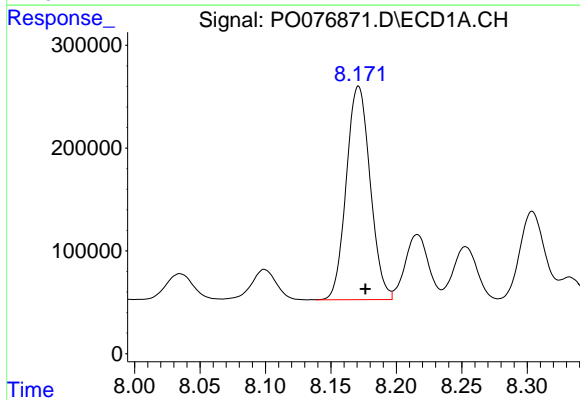
R.T.: 7.905 min
 Delta R.T.: -0.004 min
 Response: 2211921
 Conc: 552.32 ng/ml

Instrument :
 ECD_O
 ClientSampleId :



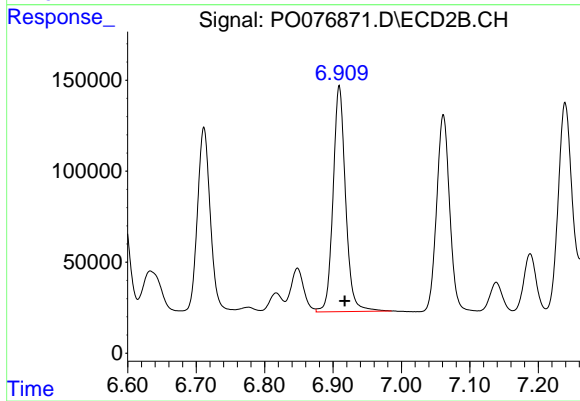
#31 AR-1260-1

R.T.: 6.711 min
 Delta R.T.: -0.008 min
 Response: 1362855
 Conc: 521.58 ng/ml



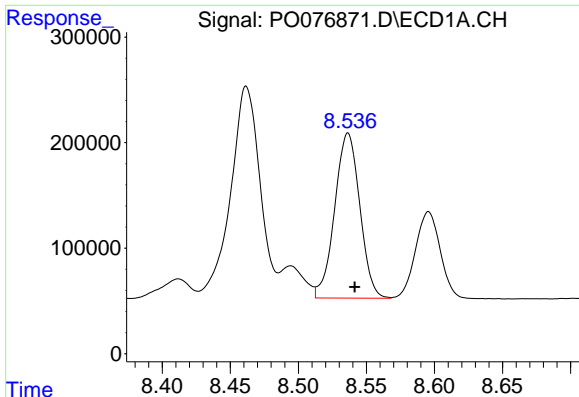
#32 AR-1260-2

R.T.: 8.171 min
 Delta R.T.: -0.005 min
 Response: 2639685
 Conc: 532.92 ng/ml



#32 AR-1260-2

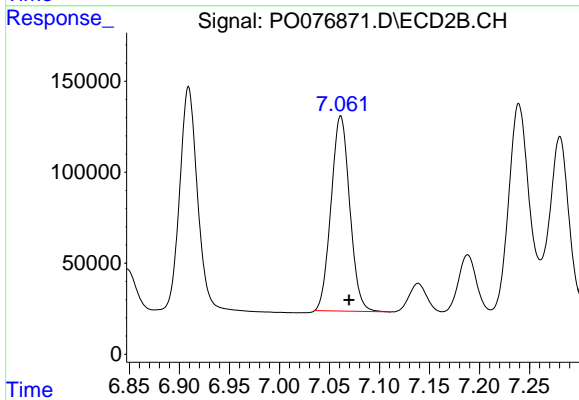
R.T.: 6.909 min
 Delta R.T.: -0.008 min
 Response: 1577229
 Conc: 499.49 ng/ml



#33 AR-1260-3

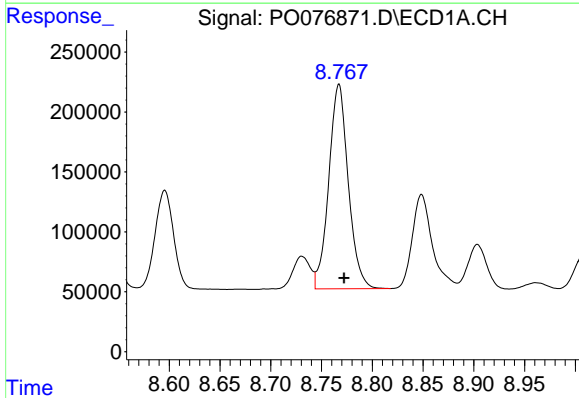
R.T.: 8.537 min
Delta R.T.: -0.005 min
Response: 2007872
Conc: 517.09 ng/ml

Instrument :
ECD_O
ClientSampled :



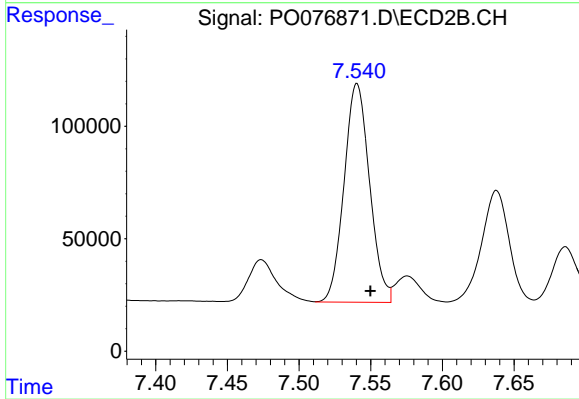
#33 AR-1260-3

R.T.: 7.061 min
Delta R.T.: -0.009 min
Response: 1393639
Conc: 477.00 ng/ml



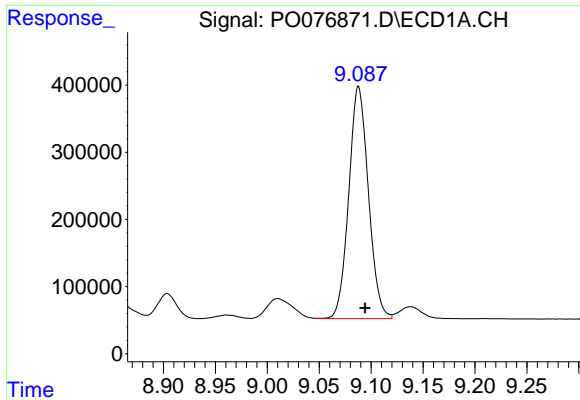
#34 AR-1260-4

R.T.: 8.767 min
Delta R.T.: -0.005 min
Response: 2281589
Conc: 529.76 ng/ml



#34 AR-1260-4

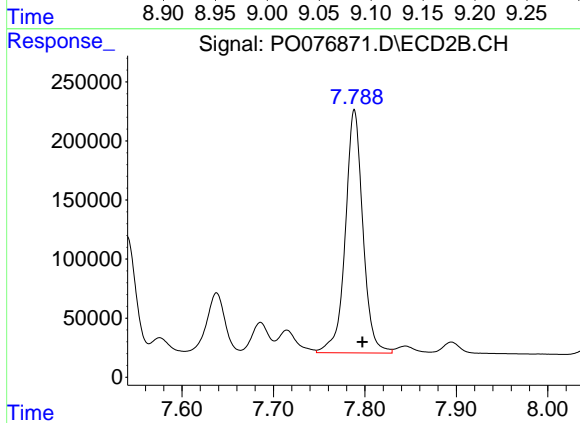
R.T.: 7.540 min
Delta R.T.: -0.009 min
Response: 1204146
Conc: 481.34 ng/ml



#35 AR-1260-5

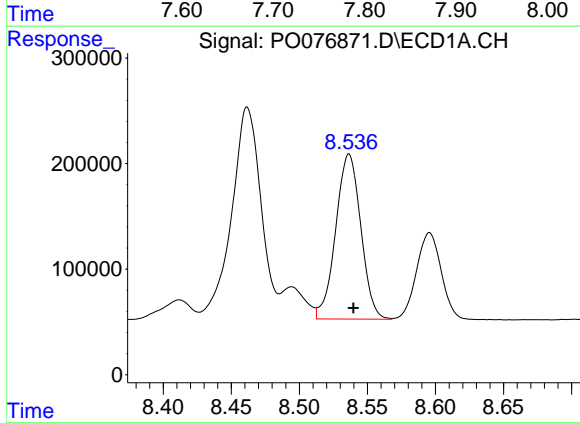
R.T.: 9.088 min
 Delta R.T.: -0.006 min
 Response: 4550508
 Conc: 533.98 ng/ml

Instrument :
 ECD_O
 ClientSampleId :



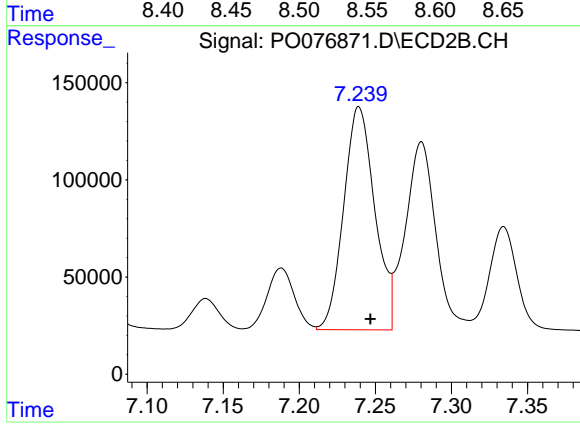
#35 AR-1260-5

R.T.: 7.789 min
 Delta R.T.: -0.009 min
 Response: 2746690
 Conc: 465.65 ng/ml



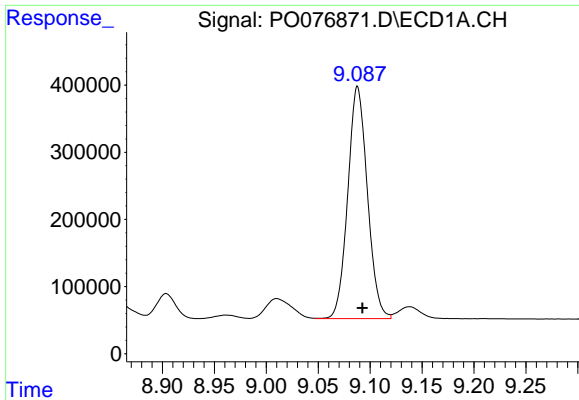
#36 AR-1262-1

R.T.: 8.537 min
 Delta R.T.: -0.003 min
 Response: 2007872
 Conc: 362.28 ng/ml



#36 AR-1262-1

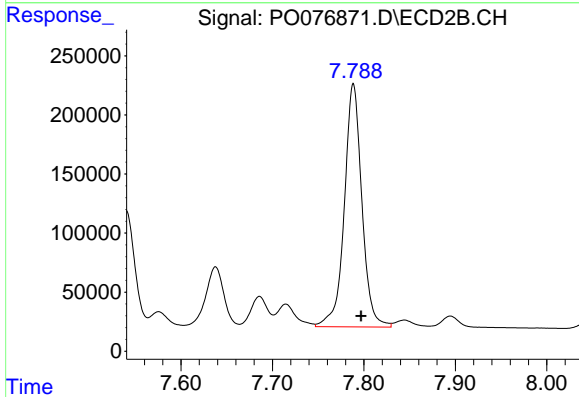
R.T.: 7.239 min
 Delta R.T.: -0.008 min
 Response: 1638329
 Conc: 925.56 ng/ml



#37 AR-1262-2

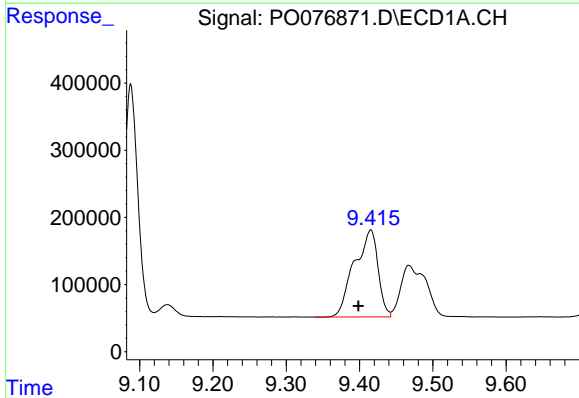
R.T.: 9.088 min
 Delta R.T.: -0.005 min
 Response: 4550508
 Conc: 465.12 ng/ml

Instrument :
 ECD_O
 ClientSampleId :



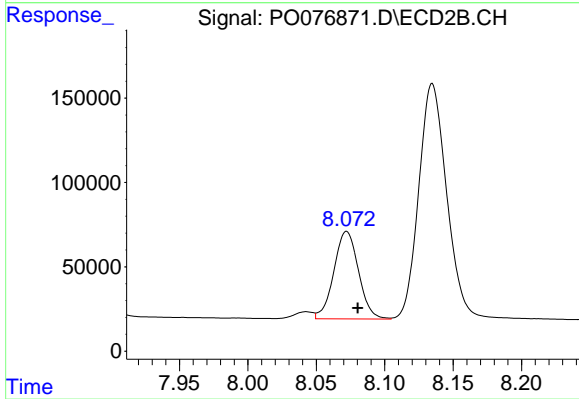
#37 AR-1262-2

R.T.: 7.789 min
 Delta R.T.: -0.009 min
 Response: 2746690
 Conc: 453.51 ng/ml



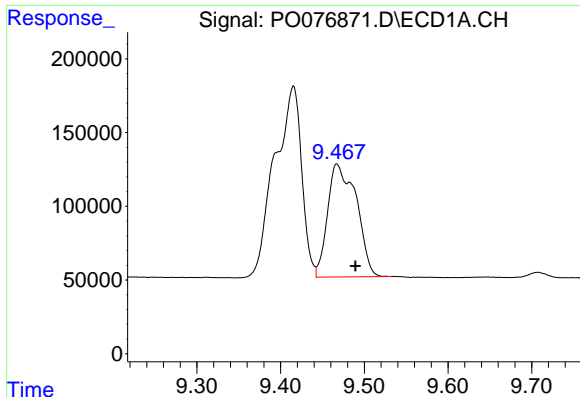
#38 AR-1262-3

R.T.: 9.415 min
 Delta R.T.: 0.017 min
 Response: 2906767
 Conc: 450.56 ng/ml



#38 AR-1262-3

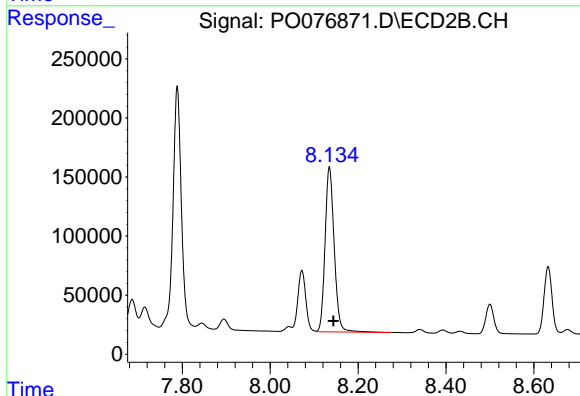
R.T.: 8.072 min
 Delta R.T.: -0.008 min
 Response: 651408
 Conc: 258.97 ng/ml



#39 AR-1262-4

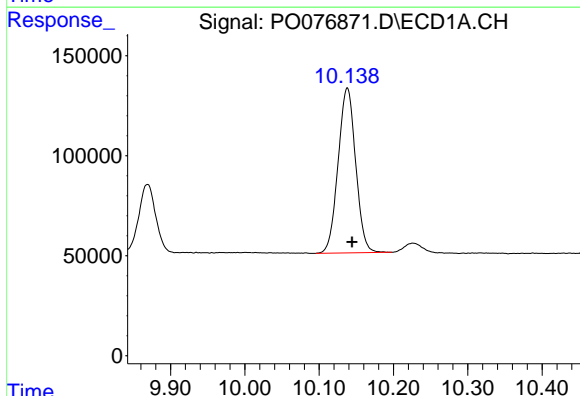
R.T.: 9.467 min
 Delta R.T.: -0.022 min
 Response: 1828294
 Conc: 364.66 ng/ml

Instrument :
 ECD_O
 ClientSampled :



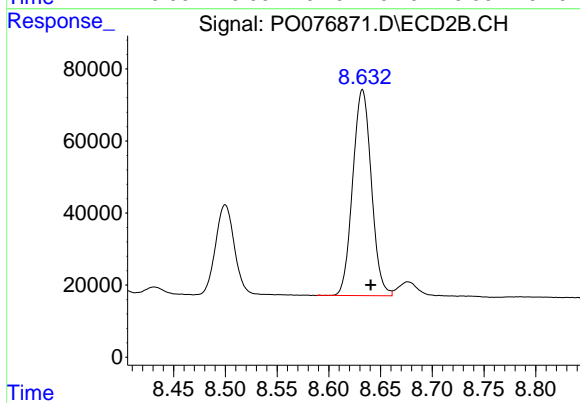
#39 AR-1262-4

R.T.: 8.135 min
 Delta R.T.: -0.009 min
 Response: 2013576
 Conc: 444.21 ng/ml



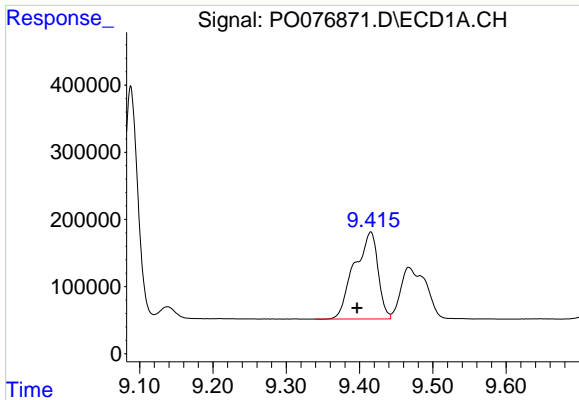
#40 AR-1262-5

R.T.: 10.138 min
 Delta R.T.: -0.007 min
 Response: 1351884
 Conc: 390.91 ng/ml



#40 AR-1262-5

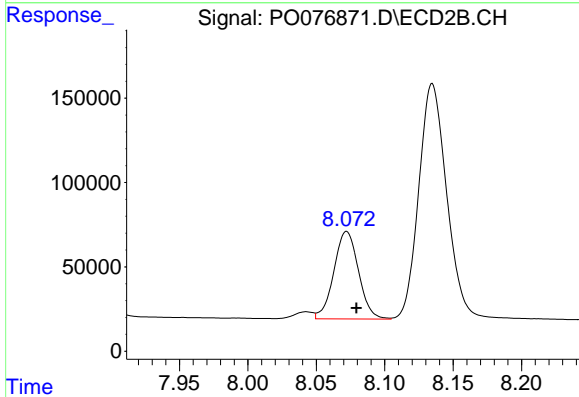
R.T.: 8.633 min
 Delta R.T.: -0.008 min
 Response: 716830
 Conc: 361.94 ng/ml



#41 AR-1268-1

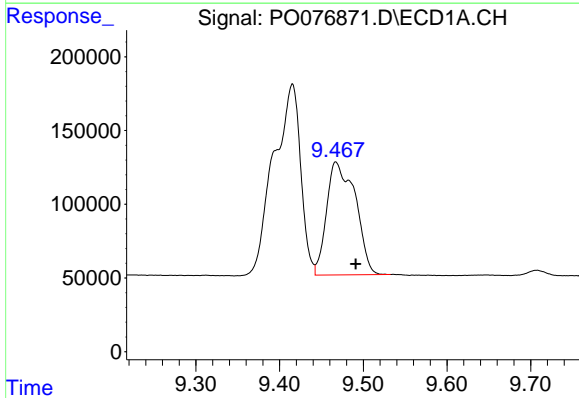
R.T.: 9.415 min
 Delta R.T.: 0.018 min
 Response: 2906767
 Conc: 238.71 ng/ml

Instrument :
 ECD_O
 ClientSampled :



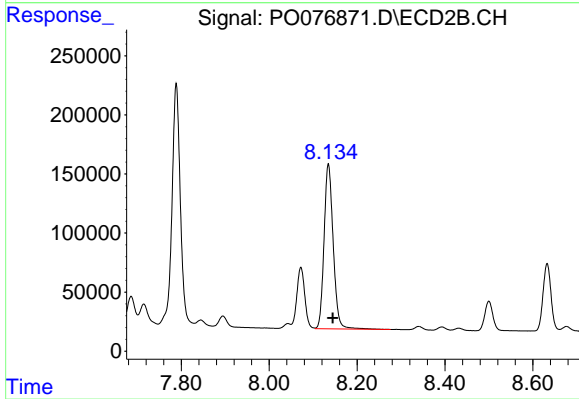
#41 AR-1268-1

R.T.: 8.072 min
 Delta R.T.: -0.007 min
 Response: 651408
 Conc: 88.61 ng/ml



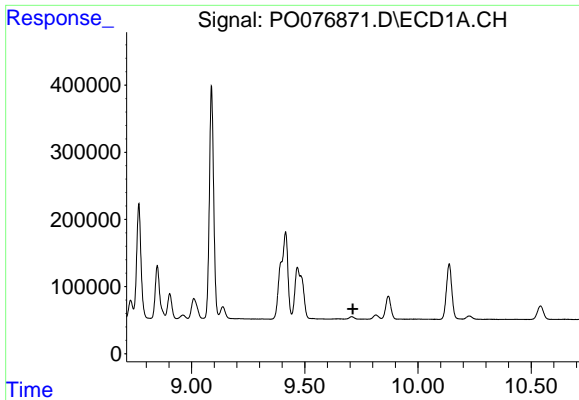
#42 AR-1268-2

R.T.: 9.467 min
 Delta R.T.: -0.024 min
 Response: 1828294
 Conc: 161.71 ng/ml



#42 AR-1268-2

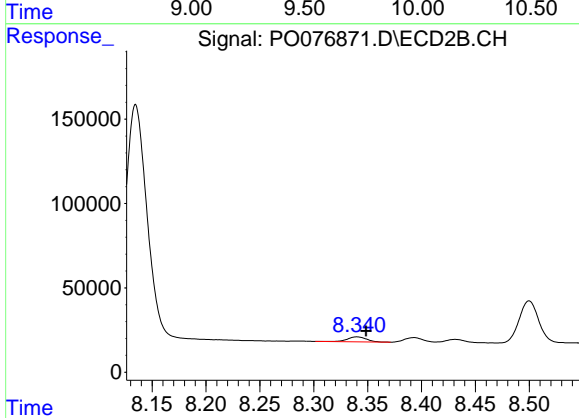
R.T.: 8.135 min
 Delta R.T.: -0.010 min
 Response: 2013576
 Conc: 301.37 ng/ml



#43 AR-1268-3

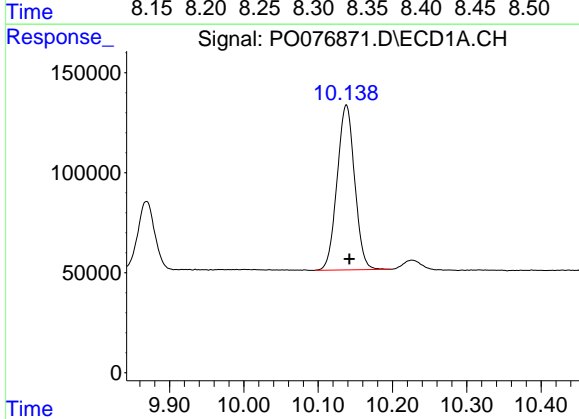
R.T.: 0.000 min
 Exp R.T.: 9.713 min
 Response: 0
 Conc: N.D.

Instrument :
 ECD_O
 ClientSampled :



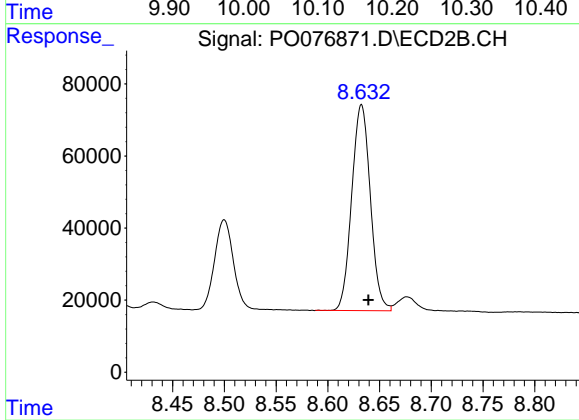
#43 AR-1268-3

R.T.: 8.340 min
 Delta R.T.: -0.008 min
 Response: 36013
 Conc: 6.22 ng/ml



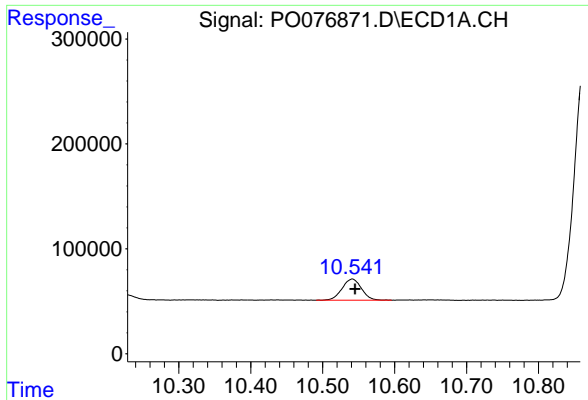
#44 AR-1268-4

R.T.: 10.138 min
 Delta R.T.: -0.004 min
 Response: 1351884
 Conc: 345.86 ng/ml



#44 AR-1268-4

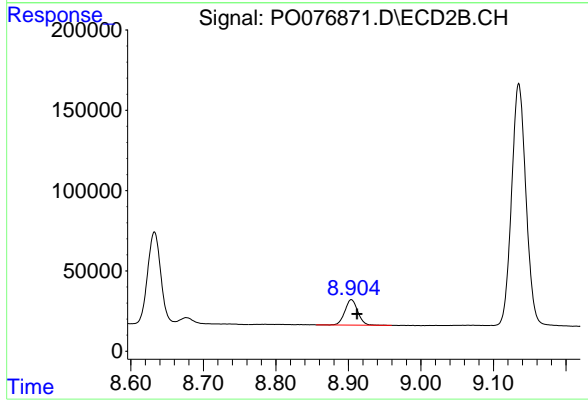
R.T.: 8.633 min
 Delta R.T.: -0.007 min
 Response: 716830
 Conc: 324.54 ng/ml



#45 AR-1268-5

R.T.: 10.541 min
Delta R.T.: -0.004 min
Response: 378682
Conc: 11.53 ng/ml

Instrument :
ECD_O
ClientSampled :



#45 AR-1268-5

R.T.: 8.904 min
Delta R.T.: -0.008 min
Response: 196070
Conc: 11.88 ng/ml