

Data Path : Z:\pestpcbsrv\HPCHEM1\ECD_0\Data\P0040821\
 Data File : P0076872.D
 Signal(s) : Signal #1: ECD1A.CH Signal #2: ECD2B.CH
 Acq On : 08 Apr 2021 11:47
 Operator : DD\AJ
 Sample : I.BLK
 Misc :
 ALS Vial : 2 Sample Multiplier: 1

Instrument :
 ECD_0
 ClientSampleId :
 I.BLK

Integration File signal 1: autoint1.e
 Integration File signal 2: autoint2.e
 Quant Time: Apr 08 14:58:38 2021
 Quant Method : Z:\pestpcbsrv\HPCHEM1\ECD_0\methods\P0040121.M
 Quant Title : GC EXTRACTABLES
 QLast Update : Fri Apr 02 05:20:17 2021
 Response via : Initial Calibration
 Integrator: ChemStation 6890 Scale Mode: Small noise peaks clipped

Volume Inj. : 2 µl
 Signal #1 Phase : ZB-MR1 Signal #2 Phase: ZB-MR2
 Signal #1 Info : 30Mx0.32mmx 0.50µ Signal #2 Info : 30M x 0.32mm x 0.25µm

Compound	RT#1	RT#2	Resp#1	Resp#2	ng/ml	ng/ml

System Monitoring Compounds						
1) SA Tetrachlo...	4.910	3.893	2004052	1066016	21.546	21.243
2) SA Decachlor...	10.882	9.139	2013378	924667	21.738	19.055

Target Compounds

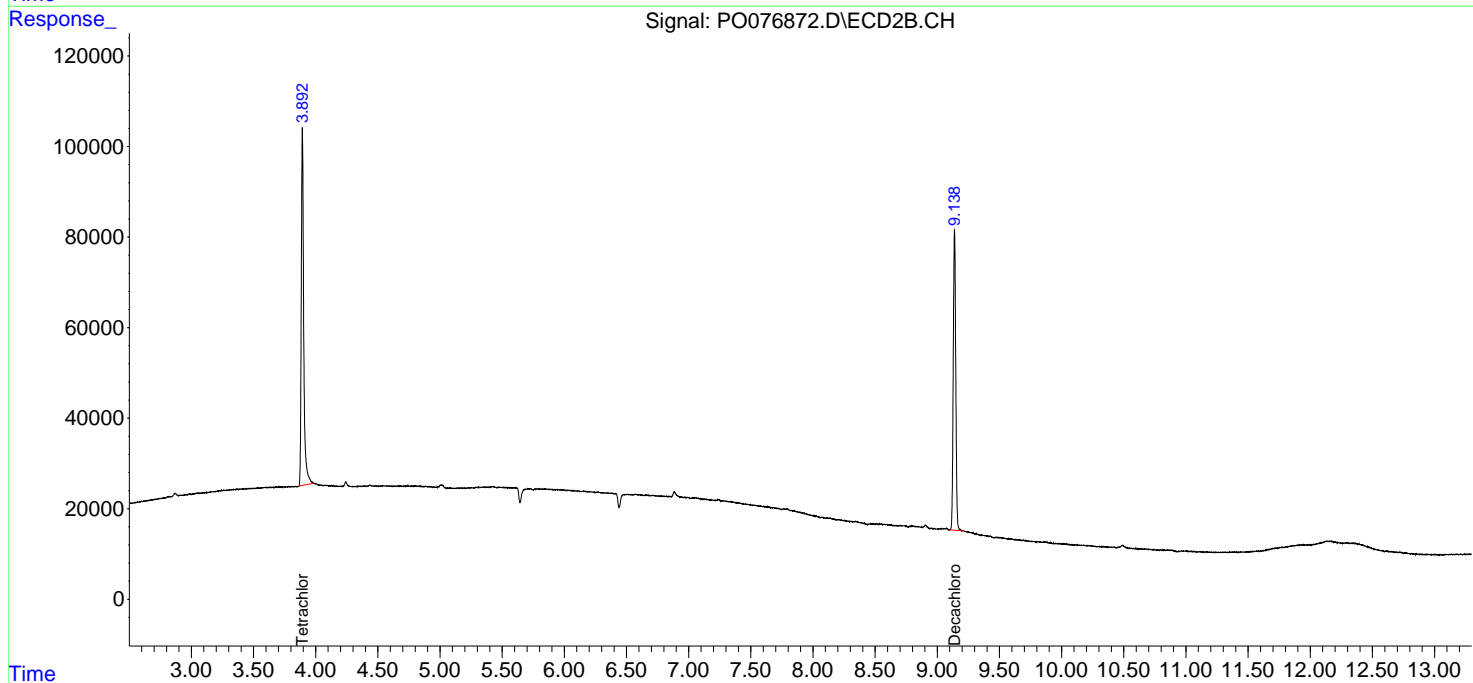
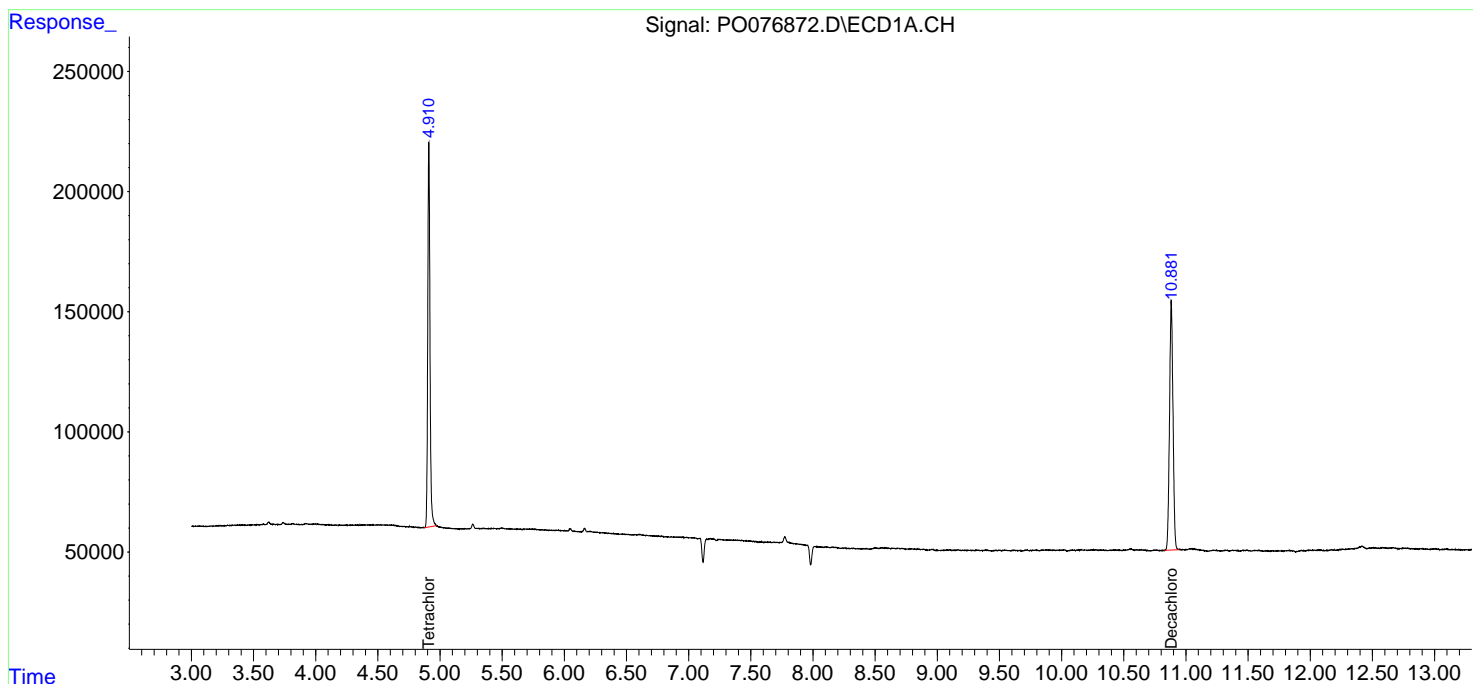
(f)=RT Delta > 1/2 Window (#)=Amounts differ by > 25% (m)=manual int.

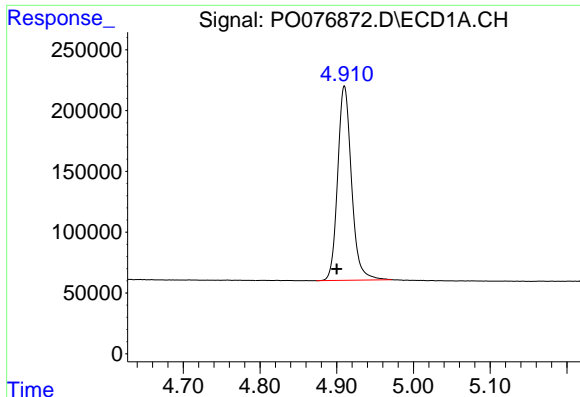
Data Path : Z:\pestpcbsrv\HPCHEM1\ECD_0\Data\P0040821\
 Data File : P0076872.D
 Signal(s) : Signal #1: ECD1A.CH Signal #2: ECD2B.CH
 Acq On : 08 Apr 2021 11:47
 Operator : DD\AJ
 Sample : I.BLK
 Misc :
 ALS Vial : 2 Sample Multiplier: 1

Instrument :
 ECD_O
 ClientSampled :
 I.BLK

Integration File signal 1: autoint1.e
 Integration File signal 2: autoint2.e
 Quant Time: Apr 08 14:58:38 2021
 Quant Method : Z:\pestpcbsrv\HPCHEM1\ECD_0\methods\P0040121.M
 Quant Title : GC EXTRACTABLES
 QLast Update : Fri Apr 02 05:20:17 2021
 Response via : Initial Calibration
 Integrator: ChemStation 6890 Scale Mode: Small noise peaks clipped

Volume Inj. : 2 µl
 Signal #1 Phase : ZB-MR1 Signal #2 Phase: ZB-MR2
 Signal #1 Info : 30Mx0.32mmx 0.50µ Signal #2 Info : 30M x 0.32mm x 0.25µm

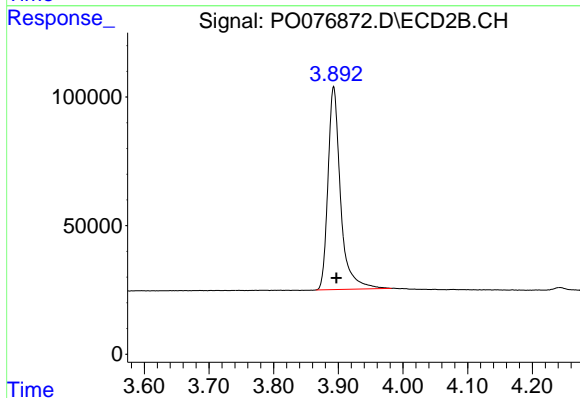




#1 Tetrachloro-m-xylene

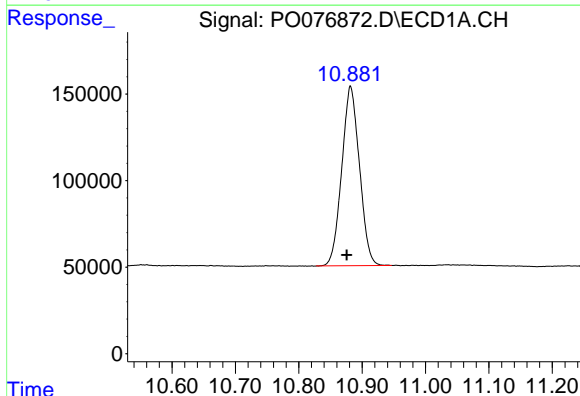
R.T.: 4.910 min
 Delta R.T.: 0.010 min
 Response: 2004052
 Conc: 21.55 ng/ml

Instrument :
 ECD_O
 ClientSampled :
 I.BLK



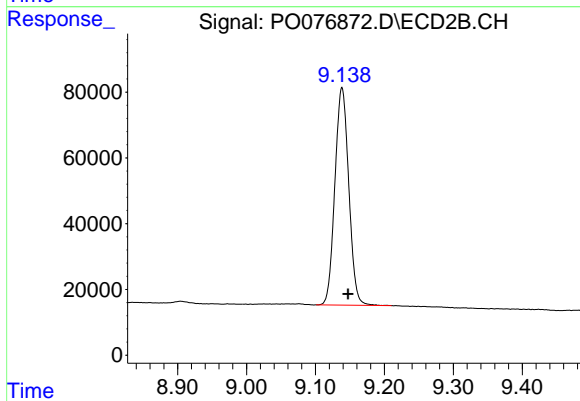
#1 Tetrachloro-m-xylene

R.T.: 3.893 min
 Delta R.T.: -0.004 min
 Response: 1066016
 Conc: 21.24 ng/ml



#2 Decachlorobiphenyl

R.T.: 10.882 min
 Delta R.T.: 0.006 min
 Response: 2013378
 Conc: 21.74 ng/ml



#2 Decachlorobiphenyl

R.T.: 9.139 min
 Delta R.T.: -0.009 min
 Response: 924667
 Conc: 19.06 ng/ml