

Data Path : Z:\pestpcbsrv\HPCHEM1\ECD_0\Data\P0040921\
 Data File : P0076895.D
 Signal(s) : Signal #1: ECD1A.CH Signal #2: ECD2B.CH
 Acq On : 09 Apr 2021 16:29
 Operator : AJ/MA
 Sample : M1967-10
 Misc :
 ALS Vial : 14 Sample Multiplier: 1

Instrument :
 ECD_0
 ClientSampleId :
 SB1-B

Integration File signal 1: autoint1.e
 Integration File signal 2: autoint2.e
 Quant Time: Apr 10 07:29:20 2021
 Quant Method : Z:\pestpcbsrv\HPCHEM1\ECD_0\methods\P0040121.M
 Quant Title : GC EXTRACTABLES
 QLast Update : Fri Apr 02 05:20:17 2021
 Response via : Initial Calibration
 Integrator: ChemStation 6890 Scale Mode: Small noise peaks clipped

Volume Inj. : 2 µl
 Signal #1 Phase : ZB-MR1 Signal #2 Phase: ZB-MR2
 Signal #1 Info : 30Mx0.32mmx 0.50µ Signal #2 Info : 30M x 0.32mm x 0.25µm

Compound	RT#1	RT#2	Resp#1	Resp#2	ng/ml	ng/ml

System Monitoring Compounds						
1) SA Tetrachlo...	4.897	3.894	1473534	842207	15.842	16.783
2) SA Decachlor...	10.863	9.134	852712	304918	9.207	6.284 #

Target Compounds

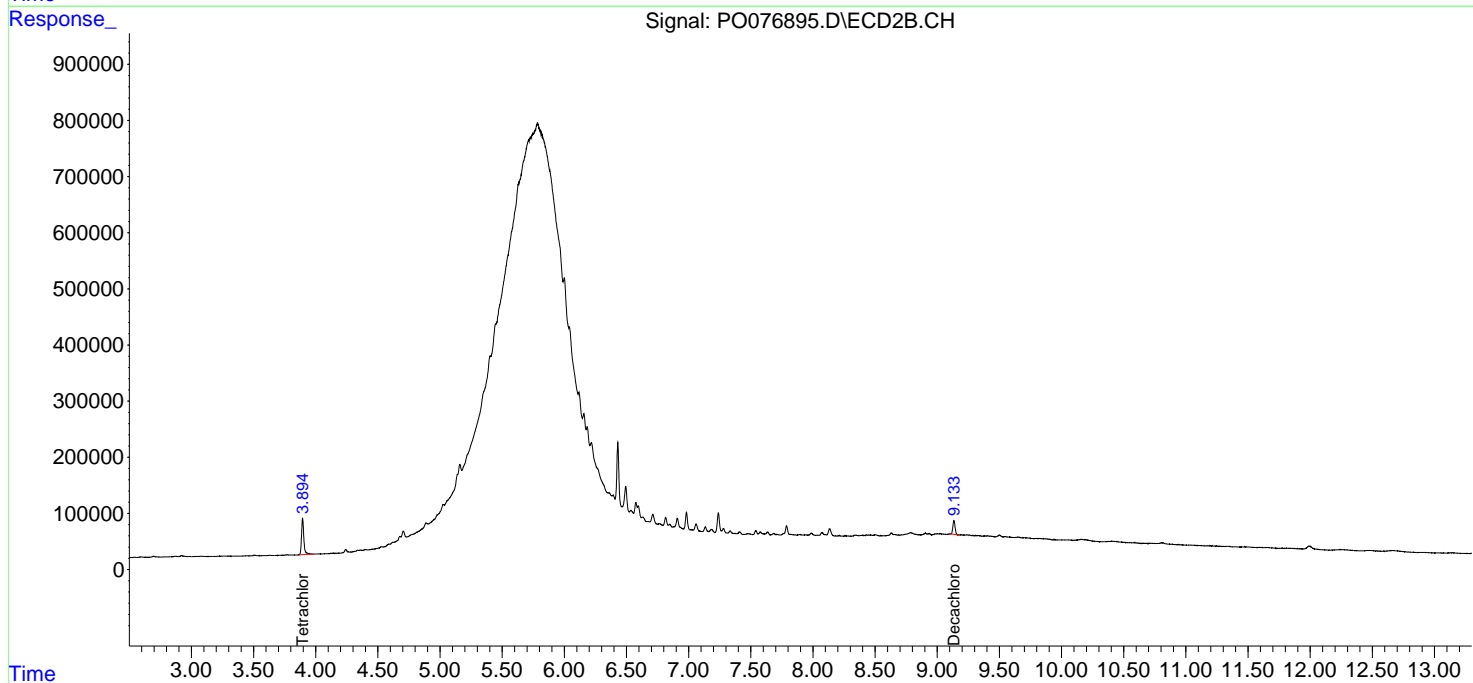
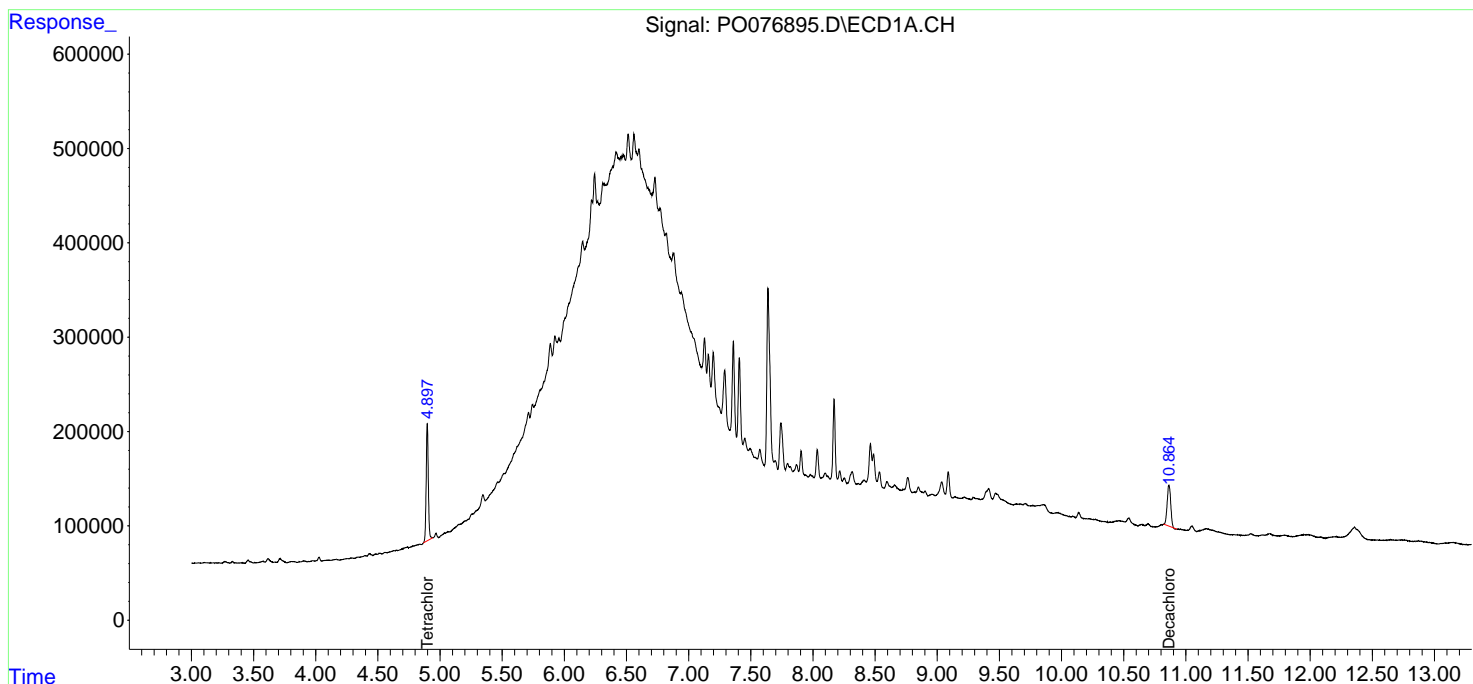
(f)=RT Delta > 1/2 Window (#)=Amounts differ by > 25% (m)=manual int.

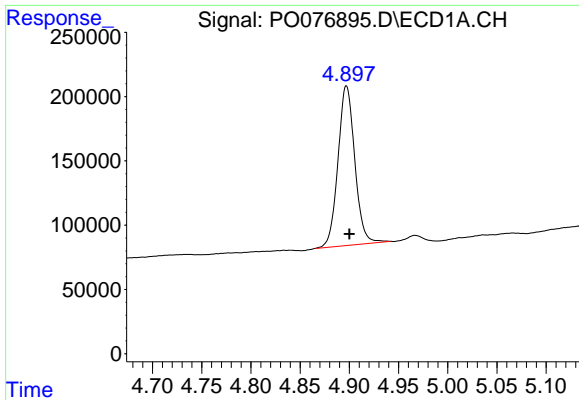
Data Path : Z:\pestpcbsrv\HPCHEM1\ECD_0\Data\P0040921\
 Data File : P0076895.D
 Signal(s) : Signal #1: ECD1A.CH Signal #2: ECD2B.CH
 Acq On : 09 Apr 2021 16:29
 Operator : AJ/MA
 Sample : M1967-10
 Misc :
 ALS Vial : 14 Sample Multiplier: 1

Instrument :
 ECD_O
 ClientSampleID :
 SB1-B

Integration File signal 1: autoint1.e
 Integration File signal 2: autoint2.e
 Quant Time: Apr 10 07:29:20 2021
 Quant Method : Z:\pestpcbsrv\HPCHEM1\ECD_0\methods\P0040121.M
 Quant Title : GC EXTRACTABLES
 QLast Update : Fri Apr 02 05:20:17 2021
 Response via : Initial Calibration
 Integrator: ChemStation 6890 Scale Mode: Small noise peaks clipped

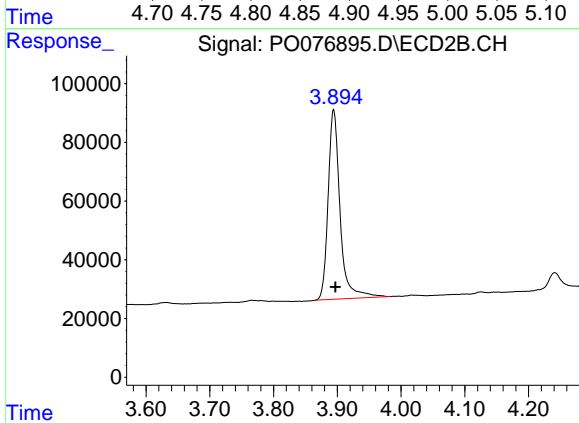
Volume Inj. : 2 µl
 Signal #1 Phase : ZB-MR1 Signal #2 Phase: ZB-MR2
 Signal #1 Info : 30Mx0.32mmx 0.50µ Signal #2 Info : 30M x 0.32mm x 0.25µm



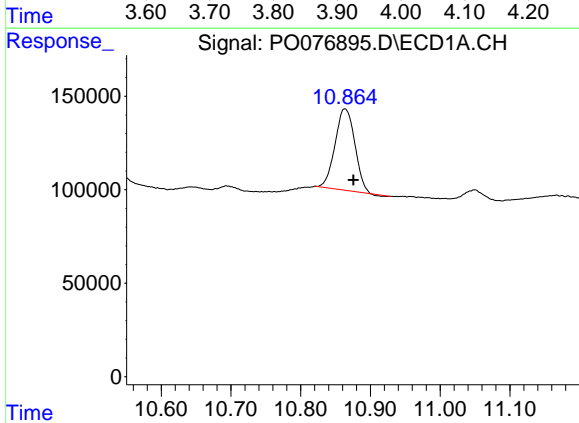


#1 Tetrachloro-m-xylene
 R.T.: 4.897 min
 Delta R.T.: -0.003 min
 Response: 1473534
 Conc: 15.84 ng/ml

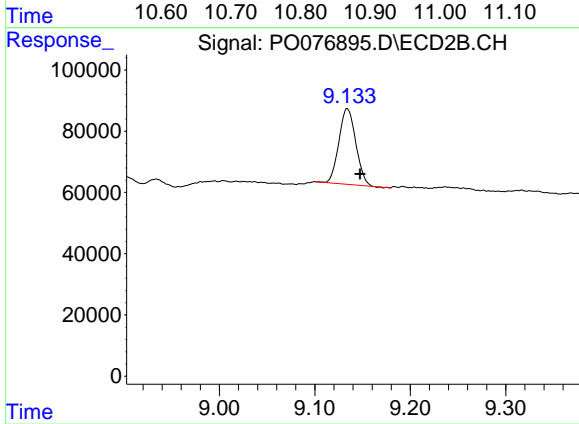
Instrument :
 ECD_O
 ClientSampled :
 SB1-B



#1 Tetrachloro-m-xylene
 R.T.: 3.894 min
 Delta R.T.: -0.003 min
 Response: 842207
 Conc: 16.78 ng/ml



#2 Decachlorobiphenyl
 R.T.: 10.863 min
 Delta R.T.: -0.012 min
 Response: 852712
 Conc: 9.21 ng/ml



#2 Decachlorobiphenyl
 R.T.: 9.134 min
 Delta R.T.: -0.013 min
 Response: 304918
 Conc: 6.28 ng/ml