

Data Path : Z:\pestpcbsrv\HPCHEM1\ECD_0\Data\P0041019\
 Data File : P0055104.D
 Signal(s) : Signal #1: ECD1A.CH Signal #2: ECD2B.CH
 Acq On : 10 Apr 2019 13:05
 Operator : SM/SJ
 Sample : I.BLK
 Misc :
 ALS Vial : 2 Sample Multiplier: 1

Instrument :
 ECD_0
 ClientSampleId :
 I.BLK

Integration File signal 1: autoint1.e
 Integration File signal 2: autoint2.e
 Quant Time: Apr 11 00:52:50 2019
 Quant Method : Z:\pestpcbsrv\HPCHEM1\ECD_0\methods\P0032519.M
 Quant Title : GC EXTRACTABLES
 QLast Update : Mon Mar 25 17:22:26 2019
 Response via : Initial Calibration
 Integrator: ChemStation 6890 Scale Mode: Small noise peaks clipped

Volume Inj. : 2 µl
 Signal #1 Phase : ZB-MR1 Signal #2 Phase: ZB-MR2
 Signal #1 Info : 30Mx0.32mmx 0.50µ Signal #2 Info : 30M x 0.32mm x 0.25µm

Compound	RT#1	RT#2	Resp#1	Resp#2	ng/ml	ng/ml

System Monitoring Compounds						
1) SA Tetrachlo...	4.313	3.610	756012	714251	21.784	22.382
2) SA Decachlor...	9.939	8.586	1048932	740342	21.278	23.246

Target Compounds

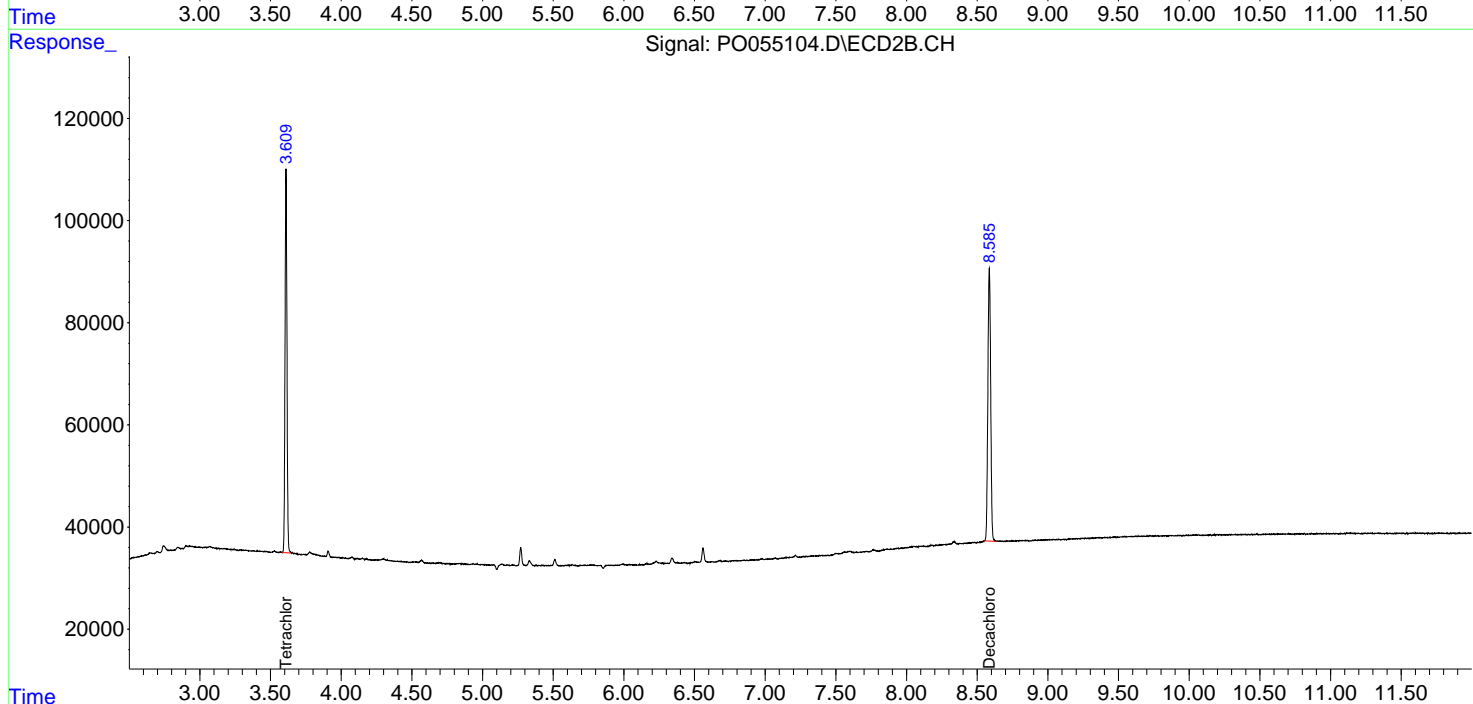
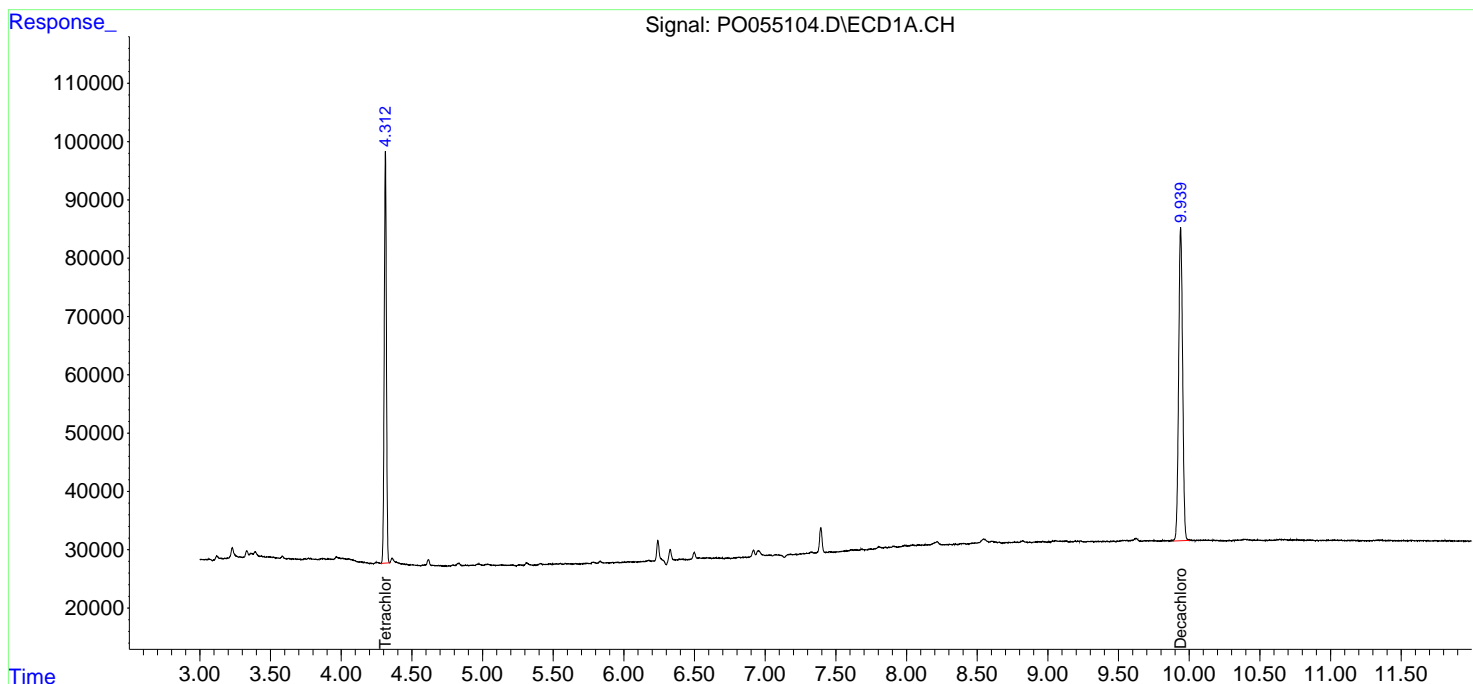
(f)=RT Delta > 1/2 Window (#)=Amounts differ by > 25% (m)=manual int.

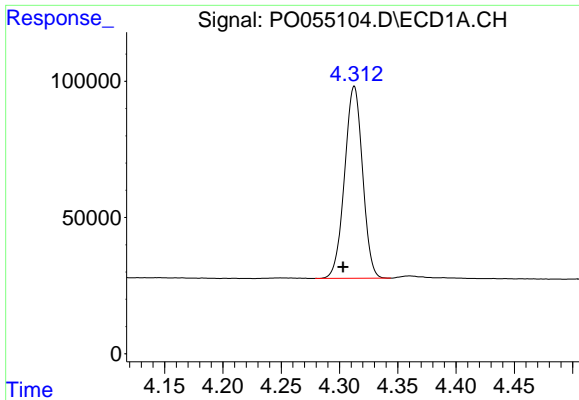
Data Path : Z:\pestpcbsrv\HPCHEM1\ECD_0\Data\P0041019\
 Data File : P0055104.D
 Signal(s) : Signal #1: ECD1A.CH Signal #2: ECD2B.CH
 Acq On : 10 Apr 2019 13:05
 Operator : SM/SJ
 Sample : I.BLK
 Misc :
 ALS Vial : 2 Sample Multiplier: 1

Instrument :
 ECD_O
 ClientSampleID :
 I.BLK

Integration File signal 1: autoint1.e
 Integration File signal 2: autoint2.e
 Quant Time: Apr 11 00:52:50 2019
 Quant Method : Z:\pestpcbsrv\HPCHEM1\ECD_0\methods\P0032519.M
 Quant Title : GC EXTRACTABLES
 QLast Update : Mon Mar 25 17:22:26 2019
 Response via : Initial Calibration
 Integrator: ChemStation 6890 Scale Mode: Small noise peaks clipped

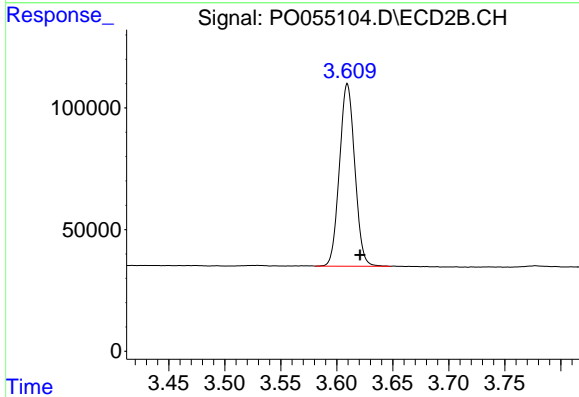
Volume Inj. : 2 µl
 Signal #1 Phase : ZB-MR1 Signal #2 Phase: ZB-MR2
 Signal #1 Info : 30Mx0.32mmx 0.50µ Signal #2 Info : 30M x 0.32mm x 0.25µm



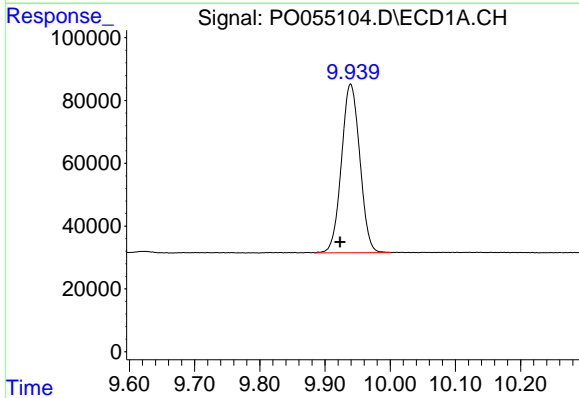


#1 Tetrachloro-m-xylene
 R.T.: 4.313 min
 Delta R.T.: 0.010 min
 Response: 756012
 Conc: 21.78 ng/ml

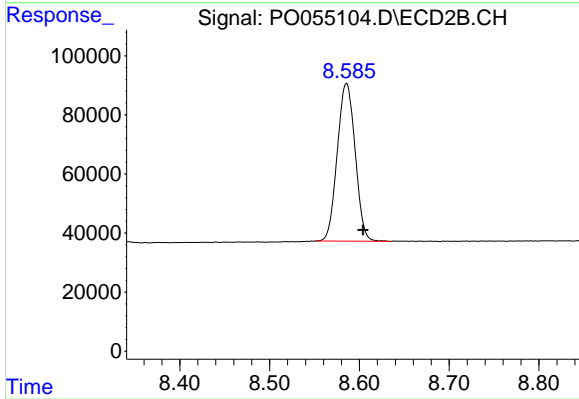
Instrument :
 ECD_O
 ClientSampleId :
 I.BLK



#1 Tetrachloro-m-xylene
 R.T.: 3.610 min
 Delta R.T.: -0.011 min
 Response: 714251
 Conc: 22.38 ng/ml



#2 Decachlorobiphenyl
 R.T.: 9.939 min
 Delta R.T.: 0.016 min
 Response: 1048932
 Conc: 21.28 ng/ml



#2 Decachlorobiphenyl
 R.T.: 8.586 min
 Delta R.T.: -0.018 min
 Response: 740342
 Conc: 23.25 ng/ml