

Data Path : Z:\pestpcbsrv\HPCHEM1\ECD\_O\Data\P0041025\  
 Data File : P0110352.D  
 Signal(s) : Signal #1: ECD1A.ch Signal #2: ECD2B.ch  
 Acq On : 10 Apr 2025 10:31  
 Operator : YP/AJ  
 Sample : AR1660ICC250  
 Misc :  
 ALS Vial : 6 Sample Multiplier: 1

Instrument :  
 ECD\_O  
 ClientSampleId :  
 AR1660ICC250

Integration File signal 1: autoint1.e  
 Integration File signal 2: autoint2.e  
 Quant Time: Apr 10 11:01:30 2025  
 Quant Method : Z:\pestpcbsrv\HPCHEM1\ECD\_O\methods\P0041025.M  
 Quant Title : GC EXTRACTABLES  
 QLast Update : Thu Apr 10 10:56:01 2025  
 Response via : Initial Calibration  
 Integrator: ChemStation

Volume Inj. : 2 µl  
 Signal #1 Phase : ZB-MR1 Signal #2 Phase: ZB-MR2  
 Signal #1 Info : 30Mx0.32mmx 0.50µ Signal #2 Info : 30M x 0.32mm x 0.25µm

Compound	RT#1	RT#2	Resp#1	Resp#2	ng/ml	ng/ml
-----						
System Monitoring Compounds						
1) SA Tetrachlo...	3.688	3.685	218.4E6	127.3E6	24.901	25.482
2) SA Decachlor...	8.734	8.683	205.3E6	50640696	26.698	27.397
Target Compounds						
3) L1 AR-1016-1	4.780	4.765	85356347	46113983	266.639	270.074
4) L1 AR-1016-2	4.798	4.784	118.1E6	64942457	263.859	262.570
5) L1 AR-1016-3	4.855	4.959	84160004	35585704	271.600	268.445
6) L1 AR-1016-4	4.975	5.002	65304594	30405283	267.965	275.610
7) L1 AR-1016-5	5.232	5.214	70395931	38809886	272.520	272.010
31) L7 AR-1260-1	6.272	6.245	122.7E6	64201123	268.242	270.264
32) L7 AR-1260-2	6.461	6.433	149.1E6	74637486	267.561	268.495
33) L7 AR-1260-3	6.828	6.586	128.0E6	69475884	268.498	268.057
34) L7 AR-1260-4	7.089	7.057	111.3E6	52728341	270.655	273.611
35) L7 AR-1260-5	7.331	7.297	266.3E6	117.4E6	256.903	261.226

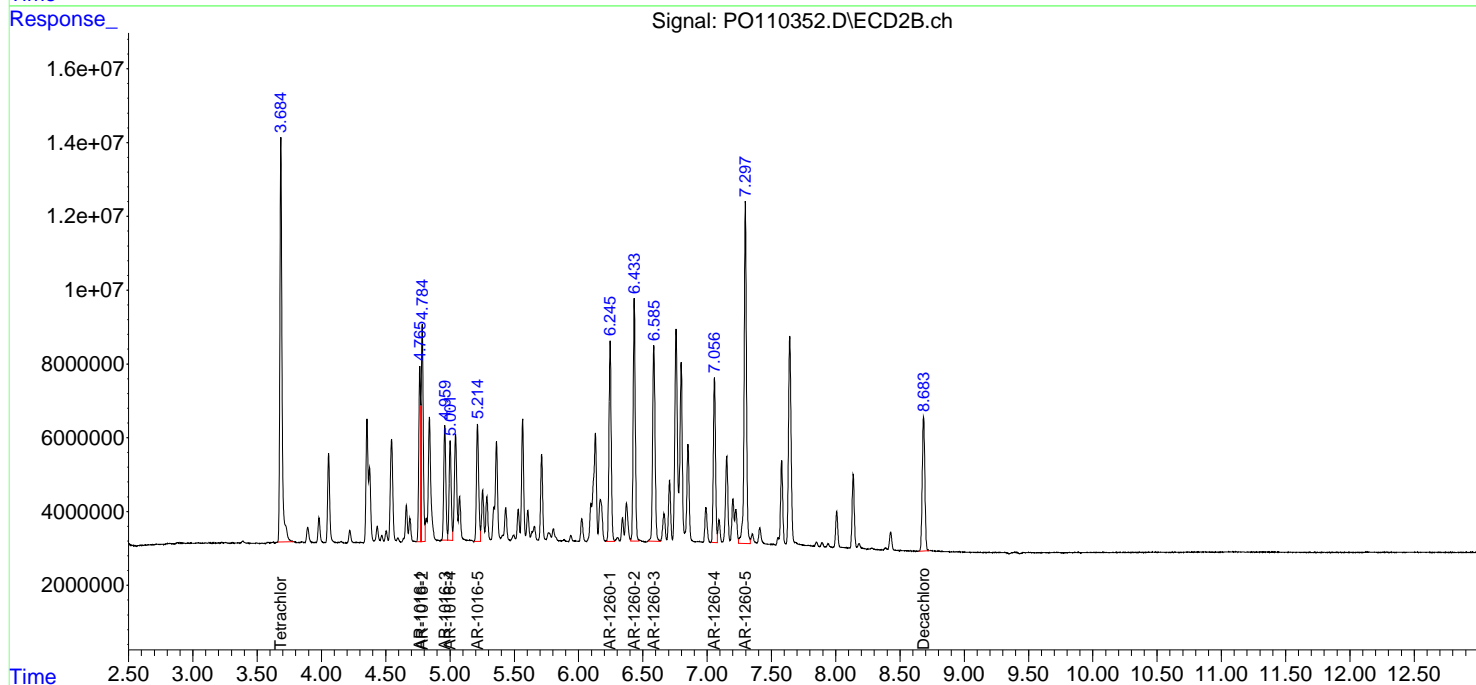
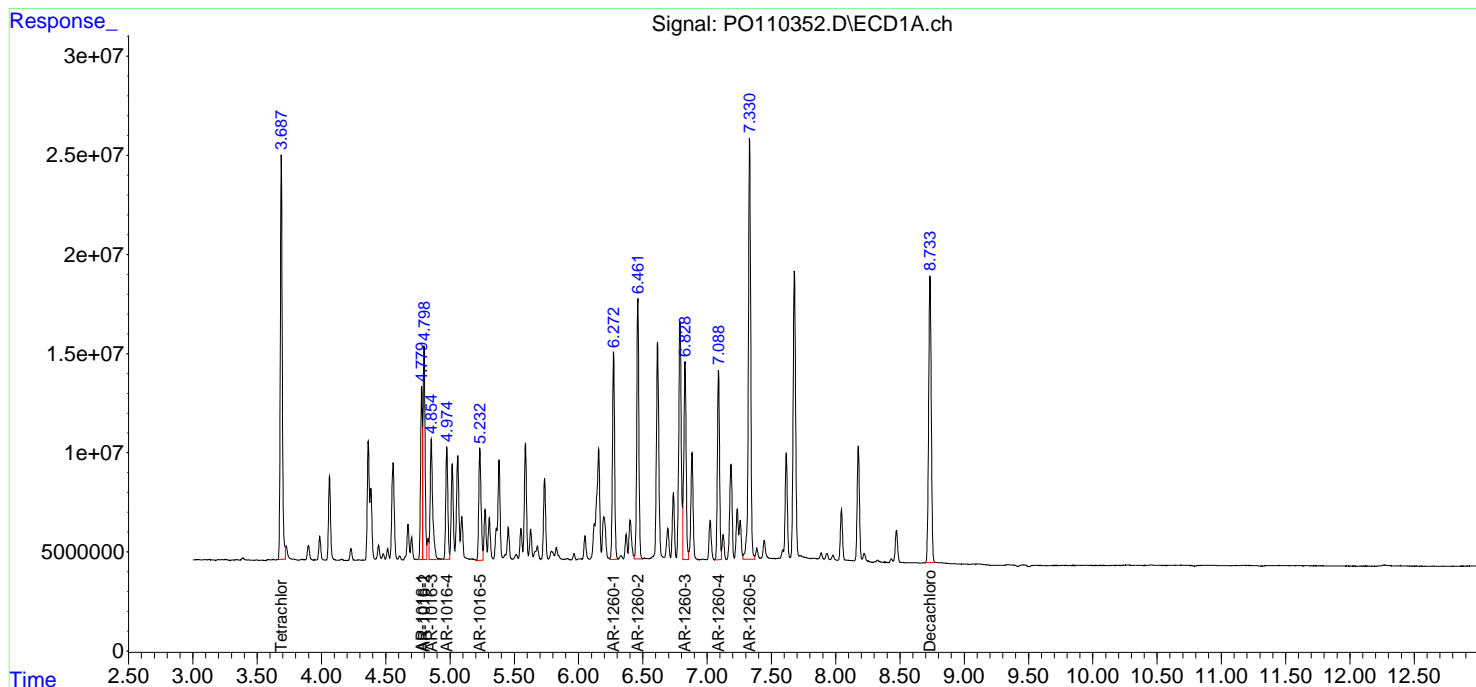
(f)=RT Delta > 1/2 Window (#)=Amounts differ by > 25% (m)=manual int.

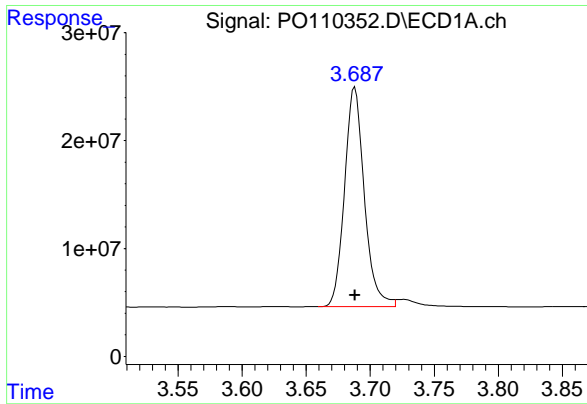
Data Path : Z:\pestpcbsrv\HPCHEM1\ECD\_O\Data\PO041025\  
 Data File : PO110352.D  
 Signal(s) : Signal #1: ECD1A.ch Signal #2: ECD2B.ch  
 Acq On : 10 Apr 2025 10:31  
 Operator : YP/AJ  
 Sample : AR1660ICC250  
 Misc :  
 ALS Vial : 6 Sample Multiplier: 1

Instrument :  
 ECD\_O  
 ClientSampleId :  
 AR1660ICC250

Integration File signal 1: autoint1.e  
 Integration File signal 2: autoint2.e  
 Quant Time: Apr 10 11:01:30 2025  
 Quant Method : Z:\pestpcbsrv\HPCHEM1\ECD\_O\methods\PO041025.M  
 Quant Title : GC EXTRACTABLES  
 QLast Update : Thu Apr 10 10:56:01 2025  
 Response via : Initial Calibration  
 Integrator: ChemStation

Volume Inj. : 2 µl  
 Signal #1 Phase : ZB-MR1 Signal #2 Phase: ZB-MR2  
 Signal #1 Info : 30Mx0.32mmx 0.50µm Signal #2 Info : 30M x 0.32mm x 0.25µm

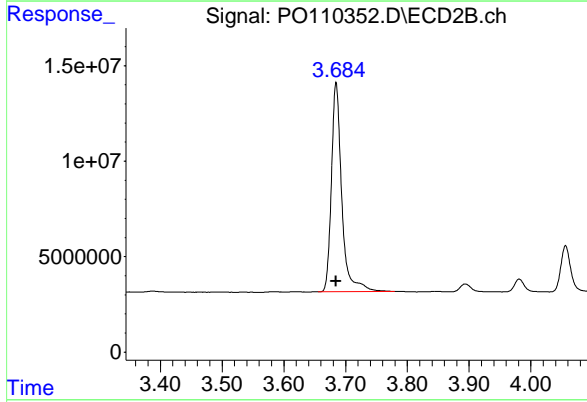




#1 Tetrachloro-m-xylene

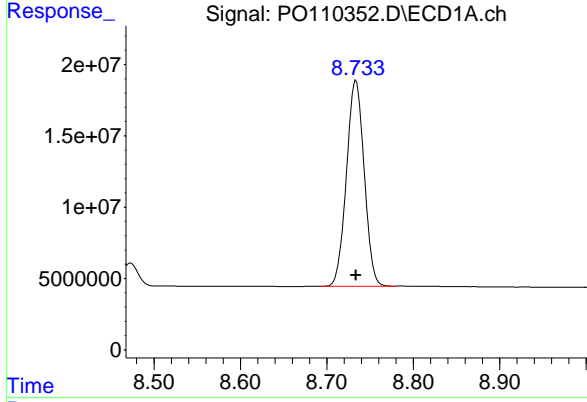
R.T.: 3.688 min  
 Delta R.T.: 0.000 min  
 Response: 218425182  
 Conc: 24.90 ng/ml

Instrument :  
 ECD\_O  
 ClientSampleId :  
 AR1660ICC250



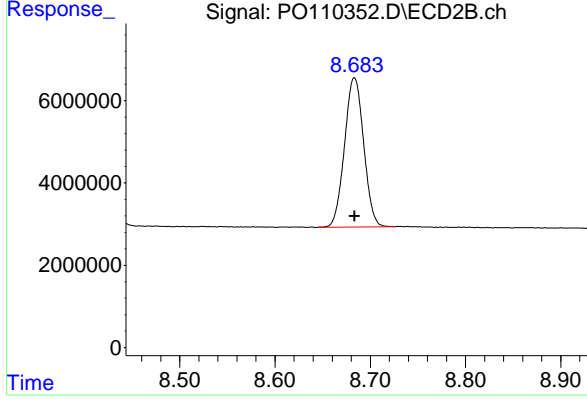
#1 Tetrachloro-m-xylene

R.T.: 3.685 min  
 Delta R.T.: 0.000 min  
 Response: 127327148  
 Conc: 25.48 ng/ml



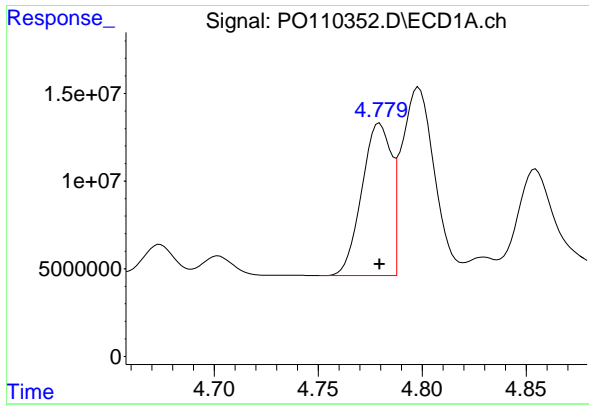
#2 Decachlorobiphenyl

R.T.: 8.734 min  
 Delta R.T.: 0.000 min  
 Response: 205292848  
 Conc: 26.70 ng/ml



#2 Decachlorobiphenyl

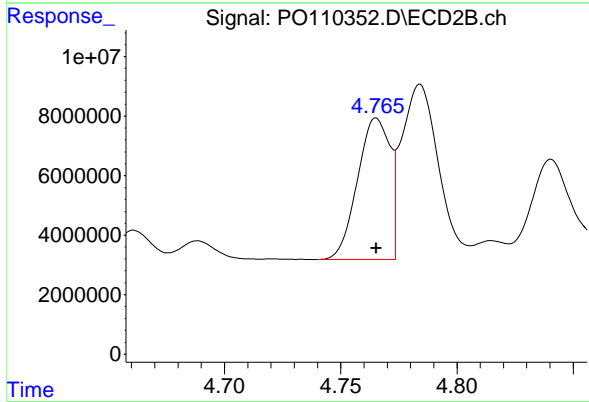
R.T.: 8.683 min  
 Delta R.T.: 0.000 min  
 Response: 50640696  
 Conc: 27.40 ng/ml



#3 AR-1016-1

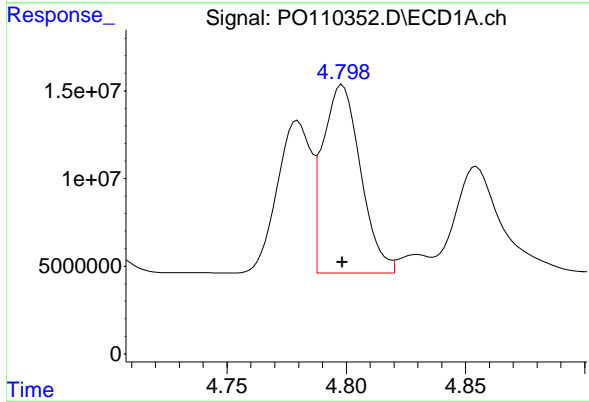
R.T.: 4.780 min  
 Delta R.T.: 0.000 min  
 Response: 85356347  
 Conc: 266.64 ng/ml

Instrument :  
 ECD\_O  
 ClientSampleId :  
 AR1660ICC250



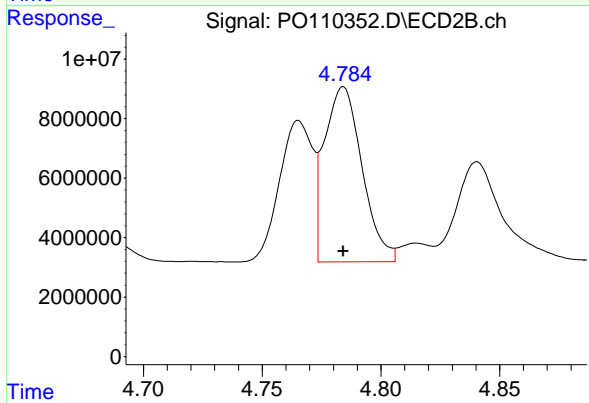
#3 AR-1016-1

R.T.: 4.765 min  
 Delta R.T.: 0.000 min  
 Response: 46113983  
 Conc: 270.07 ng/ml



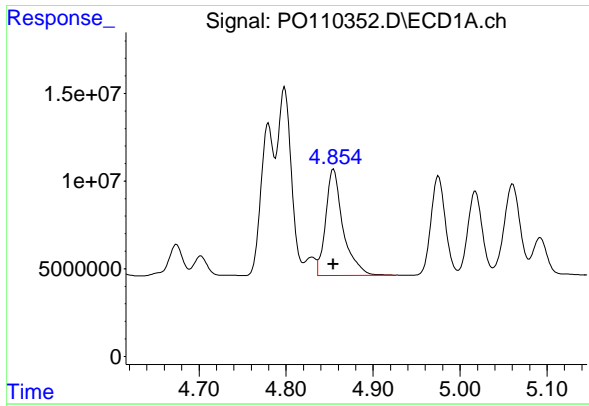
#4 AR-1016-2

R.T.: 4.798 min  
 Delta R.T.: 0.000 min  
 Response: 118116710  
 Conc: 263.86 ng/ml



#4 AR-1016-2

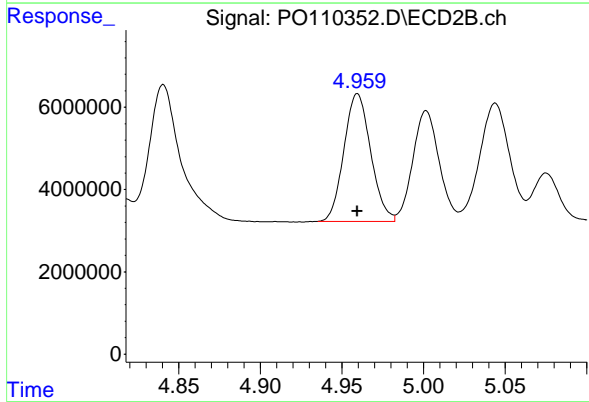
R.T.: 4.784 min  
 Delta R.T.: 0.000 min  
 Response: 64942457  
 Conc: 262.57 ng/ml



#5 AR-1016-3

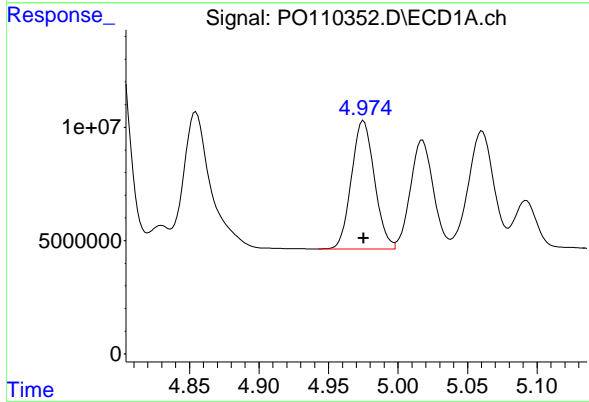
R.T.: 4.855 min  
 Delta R.T.: 0.000 min  
 Response: 84160004  
 Conc: 271.60 ng/ml

Instrument :  
 ECD\_O  
 ClientSampleId :  
 AR1660ICC250



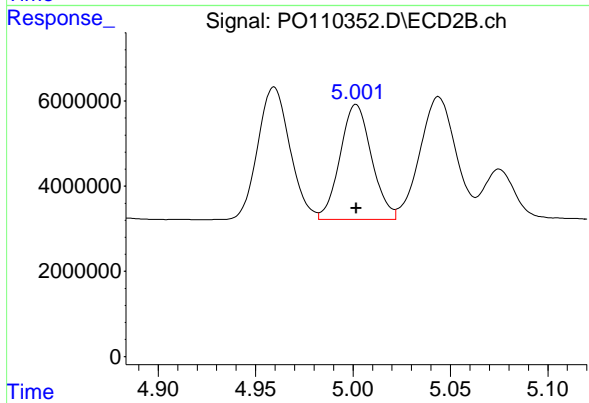
#5 AR-1016-3

R.T.: 4.959 min  
 Delta R.T.: 0.000 min  
 Response: 35585704  
 Conc: 268.45 ng/ml



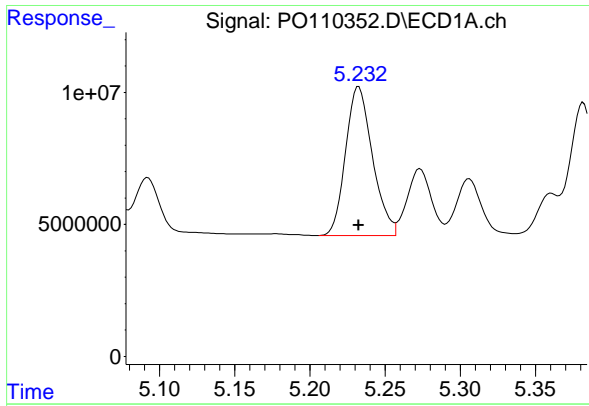
#6 AR-1016-4

R.T.: 4.975 min  
 Delta R.T.: 0.000 min  
 Response: 65304594  
 Conc: 267.97 ng/ml



#6 AR-1016-4

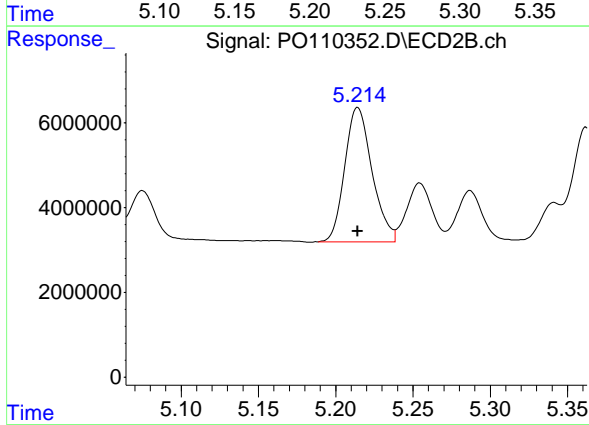
R.T.: 5.002 min  
 Delta R.T.: 0.000 min  
 Response: 30405283  
 Conc: 275.61 ng/ml



#7 AR-1016-5

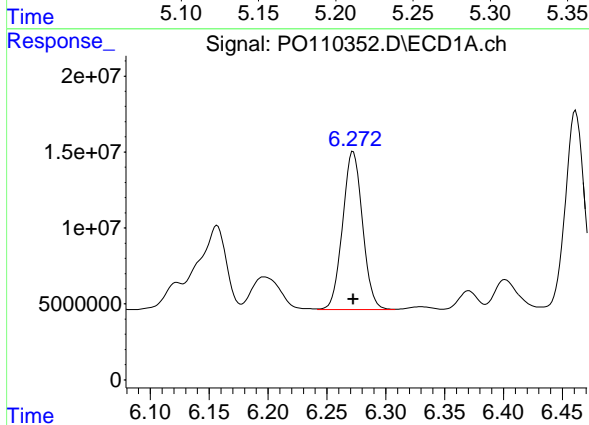
R.T.: 5.232 min  
 Delta R.T.: 0.000 min  
 Response: 70395931  
 Conc: 272.52 ng/ml

Instrument :  
 ECD\_O  
 ClientSampleId :  
 AR1660ICC250



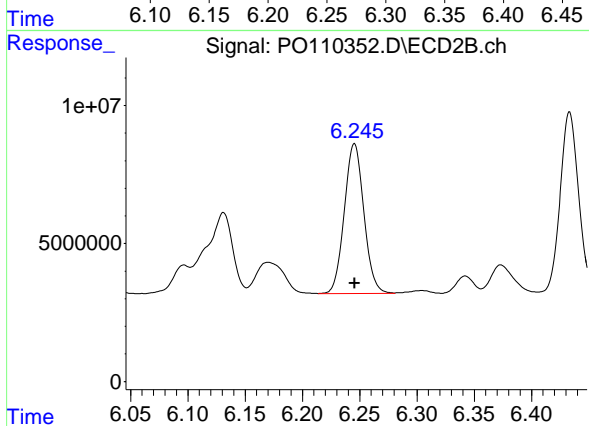
#7 AR-1016-5

R.T.: 5.214 min  
 Delta R.T.: 0.000 min  
 Response: 38809886  
 Conc: 272.01 ng/ml



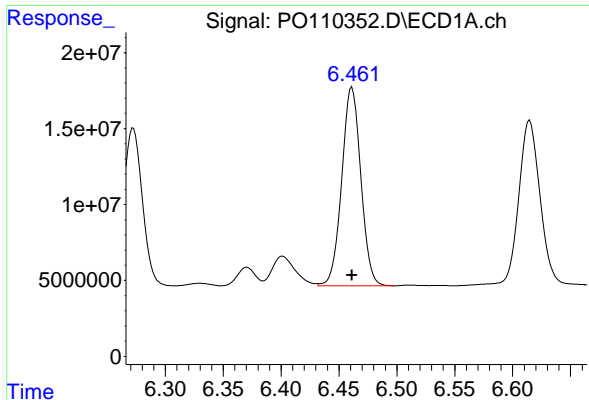
#31 AR-1260-1

R.T.: 6.272 min  
 Delta R.T.: 0.000 min  
 Response: 122716328  
 Conc: 268.24 ng/ml



#31 AR-1260-1

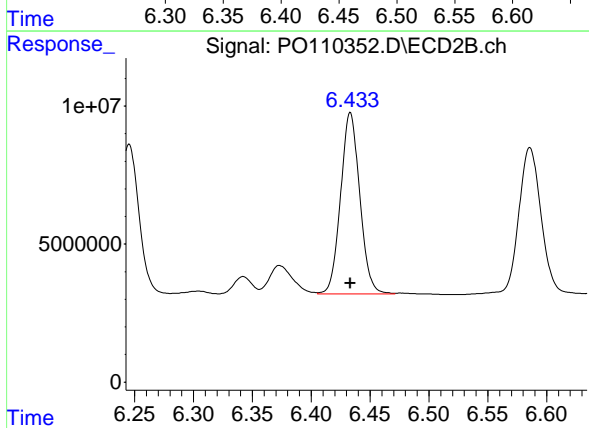
R.T.: 6.245 min  
 Delta R.T.: 0.000 min  
 Response: 64201123  
 Conc: 270.26 ng/ml



#32 AR-1260-2

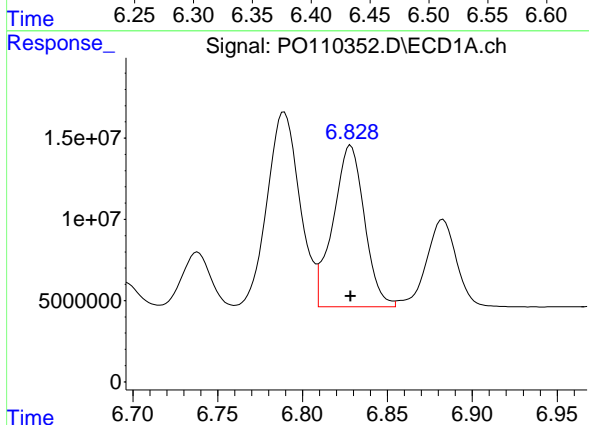
R.T.: 6.461 min  
Delta R.T.: 0.000 min  
Response: 149093603  
Conc: 267.56 ng/ml

Instrument :  
ECD\_O  
ClientSampleId :  
AR1660ICC250



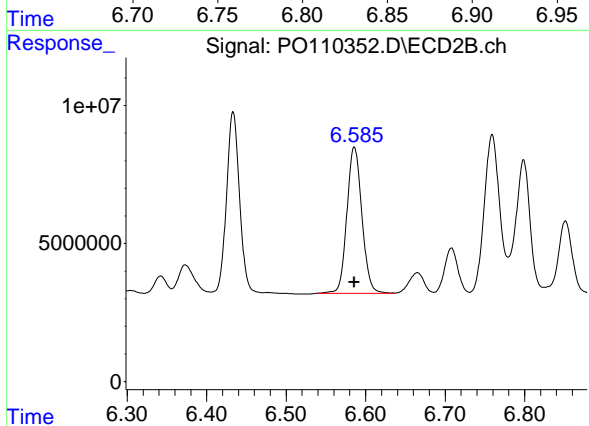
#32 AR-1260-2

R.T.: 6.433 min  
Delta R.T.: 0.000 min  
Response: 74637486  
Conc: 268.49 ng/ml



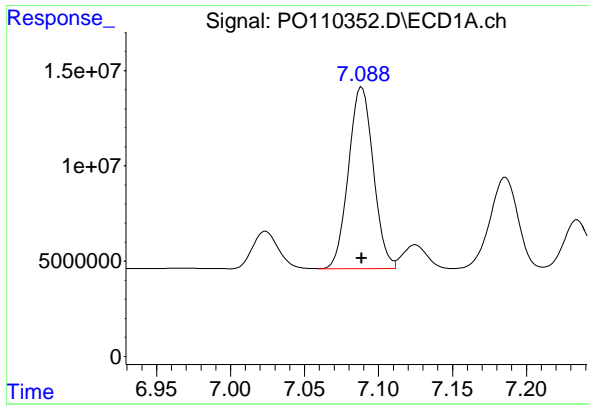
#33 AR-1260-3

R.T.: 6.828 min  
Delta R.T.: 0.000 min  
Response: 127967922  
Conc: 268.50 ng/ml



#33 AR-1260-3

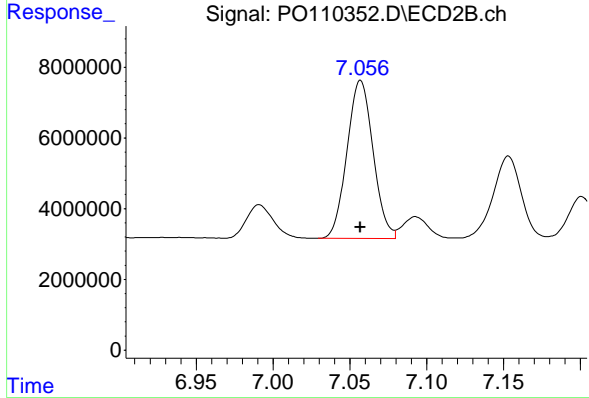
R.T.: 6.586 min  
Delta R.T.: 0.000 min  
Response: 69475884  
Conc: 268.06 ng/ml



#34 AR-1260-4

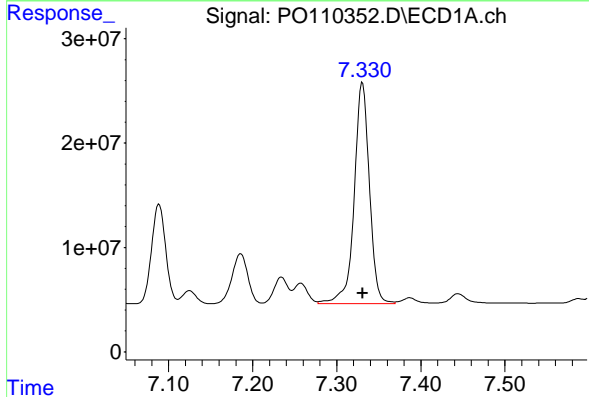
R.T.: 7.089 min  
 Delta R.T.: 0.000 min  
 Response: 111343599  
 Conc: 270.65 ng/ml

Instrument :  
 ECD\_O  
 ClientSampleId :  
 AR1660ICC250



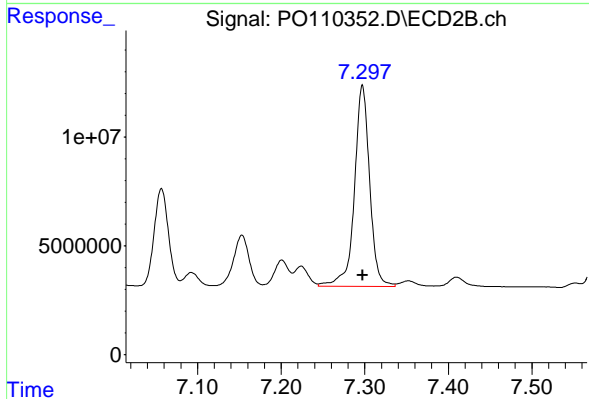
#34 AR-1260-4

R.T.: 7.057 min  
 Delta R.T.: 0.000 min  
 Response: 52728341  
 Conc: 273.61 ng/ml



#35 AR-1260-5

R.T.: 7.331 min  
 Delta R.T.: 0.000 min  
 Response: 266280520  
 Conc: 256.90 ng/ml



#35 AR-1260-5

R.T.: 7.297 min  
 Delta R.T.: 0.000 min  
 Response: 117368967  
 Conc: 261.23 ng/ml