

Data Path : Z:\pestpcbsrv\HPCHEM1\ECD_0\Data\P0041221\
 Data File : P0076910.D
 Signal(s) : Signal #1: ECD1A.CH Signal #2: ECD2B.CH
 Acq On : 12 Apr 2021 13:40
 Operator : AJ/MA
 Sample : M1990-01
 Misc :
 ALS Vial : 14 Sample Multiplier: 1

Instrument :
 ECD_0
ClientSampleId :
 ELEVATOR-PIT-STANDING-WATER

Manual Integrations
APPROVED

Ankita
 4/13/2021 1:20:26 PM

Integration File signal 1: autoint1.e
 Integration File signal 2: autoint2.e
 Quant Time: Apr 12 15:39:16 2021
 Quant Method : Z:\pestpcbsrv\HPCHEM1\ECD_0\methods\P0040121.M
 Quant Title : GC EXTRACTABLES
 QLast Update : Fri Apr 02 05:20:17 2021
 Response via : Initial Calibration
 Integrator: ChemStation 6890 Scale Mode: Small noise peaks clipped

Volume Inj. : 2 µl
 Signal #1 Phase : ZB-MR1 Signal #2 Phase: ZB-MR2
 Signal #1 Info : 30Mx0.32mmx 0.50µ Signal #2 Info : 30M x 0.32mm x 0.25µm

Compound	RT#1	RT#2	Resp#1	Resp#2	ng/ml	ng/ml

System Monitoring Compounds						
1) SA Tetrachlo...	4.898	3.895	690933	422527	7.428	8.420
2) SA Decachlor...	10.882	9.140	306332	275475	3.307m	5.677 #

Target Compounds

 (f)=RT Delta > 1/2 Window (#)=Amounts differ by > 25% (m)=manual int.

Data Path : Z:\pestpcbsrv\HPCHEM1\ECD_O\Data\P0041221\
 Data File : P0076910.D
 Signal(s) : Signal #1: ECD1A.CH Signal #2: ECD2B.CH
 Acq On : 12 Apr 2021 13:40
 Operator : AJ/MA
 Sample : M1990-01
 Misc :
 ALS Vial : 14 Sample Multiplier: 1

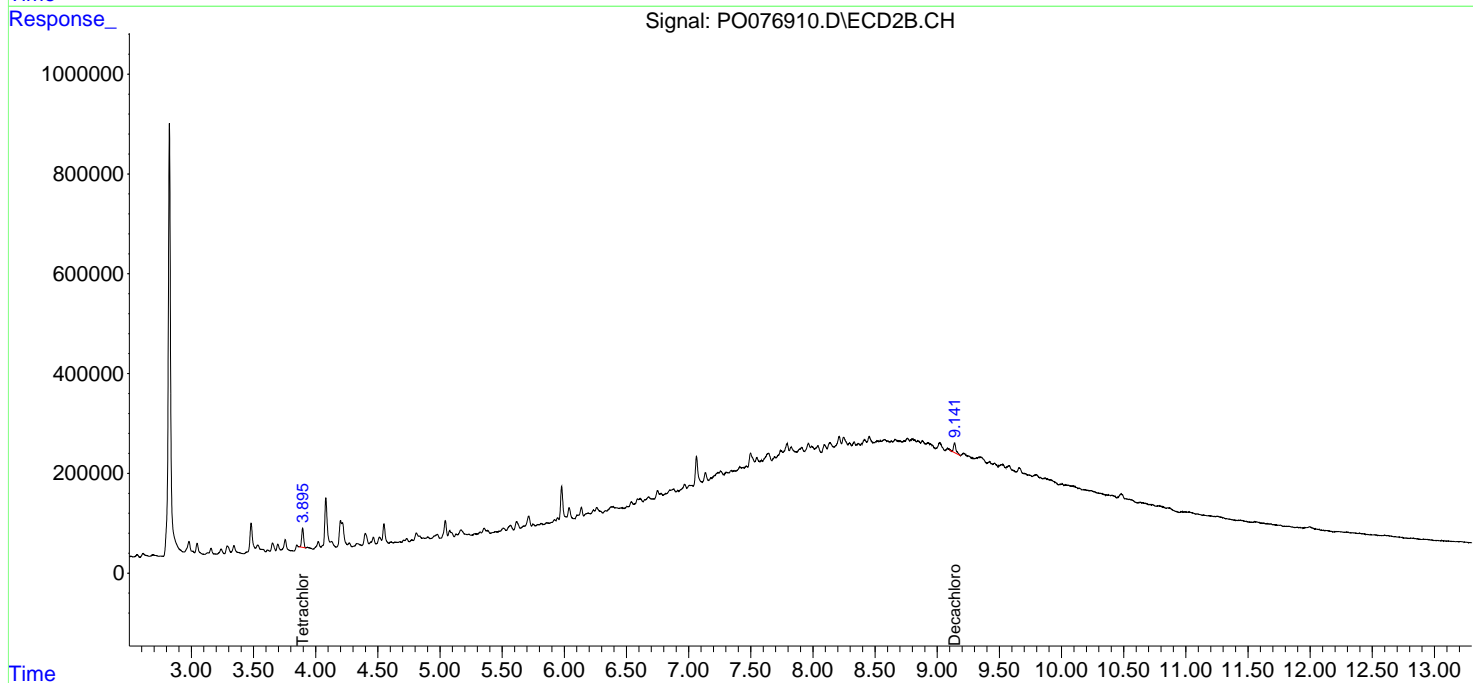
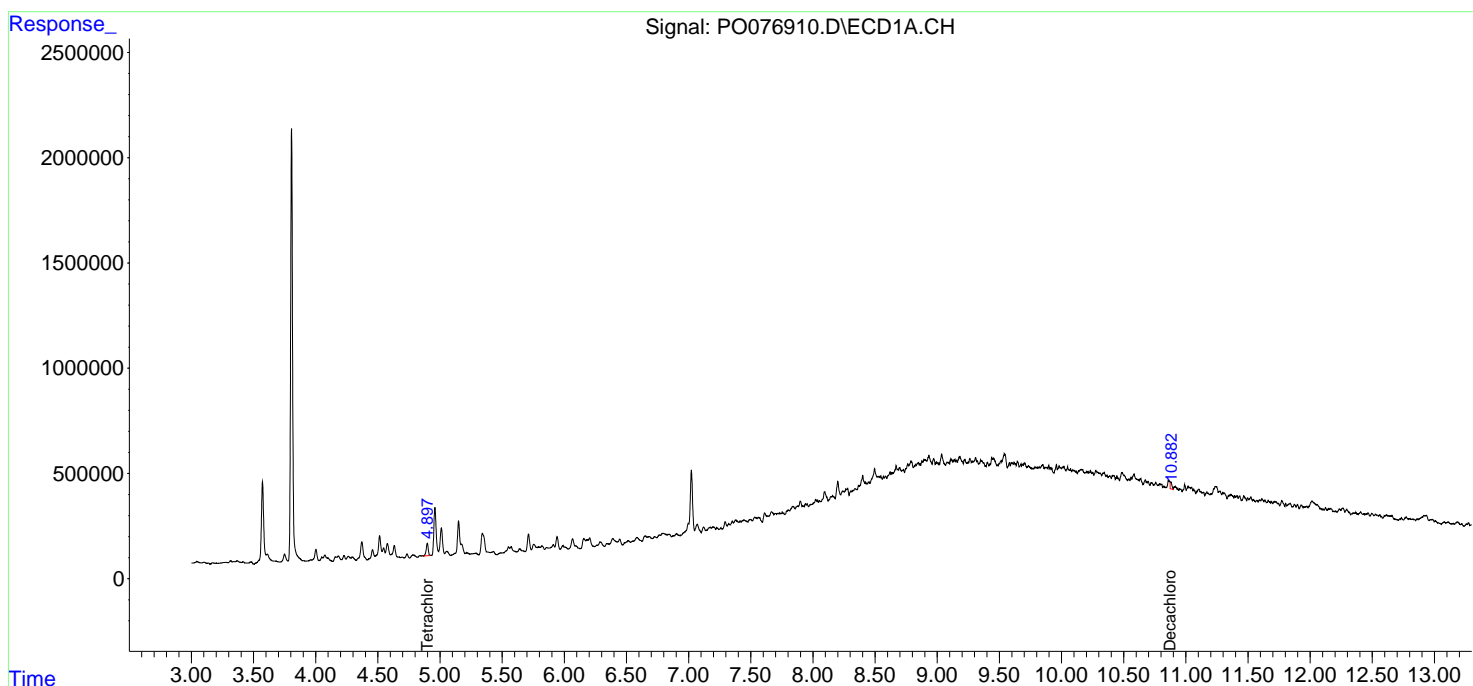
Instrument :
 ECD_O
ClientSampled :
 ELEVATOR-PIT-STANDING-WATER

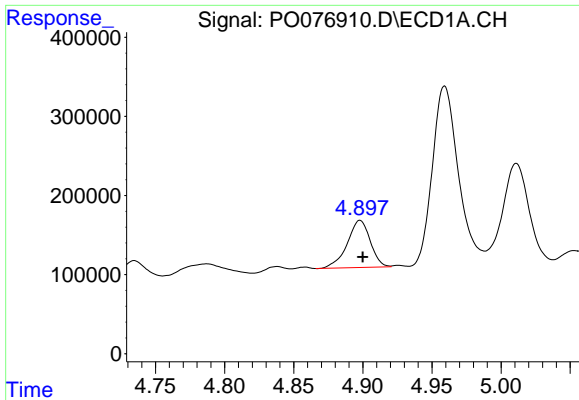
Manual Integrations
APPROVED

Ankita
 4/13/2021 1:20:26 PM

Integration File signal 1: autoint1.e
 Integration File signal 2: autoint2.e
 Quant Time: Apr 12 15:39:16 2021
 Quant Method : Z:\pestpcbsrv\HPCHEM1\ECD_O\methods\P0040121.M
 Quant Title : GC EXTRACTABLES
 QLast Update : Fri Apr 02 05:20:17 2021
 Response via : Initial Calibration
 Integrator: ChemStation 6890 Scale Mode: Small noise peaks clipped

Volume Inj. : 2 µl
 Signal #1 Phase : ZB-MR1 Signal #2 Phase: ZB-MR2
 Signal #1 Info : 30Mx0.32mmx 0.50µ Signal #2 Info : 30M x 0.32mm x 0.25µm



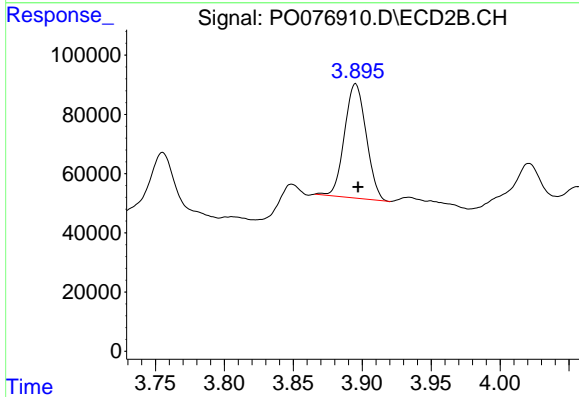


#1 Tetrachloro-m-xylene
 R.T.: 4.898 min
 Delta R.T.: -0.002 min
 Response: 690933
 Conc: 7.43 ng/ml

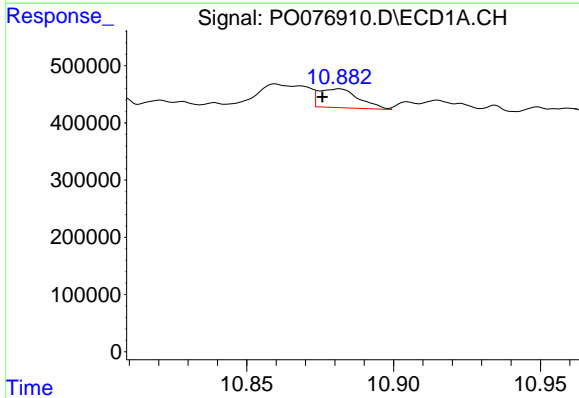
Instrument :
 ECD_O
 ClientSampled :
 ELEVATOR-PIT-STANDING-WATER

Manual Integrations
 APPROVED

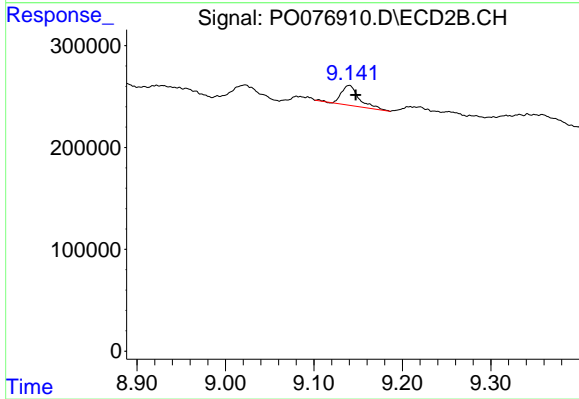
Ankita
 4/13/2021 1:20:26 PM



#1 Tetrachloro-m-xylene
 R.T.: 3.895 min
 Delta R.T.: -0.002 min
 Response: 422527
 Conc: 8.42 ng/ml



#2 Decachlorobiphenyl
 R.T.: 10.882 min
 Delta R.T.: 0.006 min
 Response: 306332
 Conc: 3.31 ng/ml m



#2 Decachlorobiphenyl
 R.T.: 9.140 min
 Delta R.T.: -0.007 min
 Response: 275475
 Conc: 5.68 ng/ml