

Data Path : Z:\pestpcbsrv\HPCHEM1\ECD_O\Data\P0041223\
 Data File : P0094122.D
 Signal(s) : Signal #1: ECD1A.ch Signal #2: ECD2B.ch
 Acq On : 12 Apr 2023 09:18
 Operator : YP/AJ
 Sample : AR1248CCC500
 Misc :
 ALS Vial : 5 Sample Multiplier: 1

Instrument :
 ECD_O
 ClientSampleId :
 AR1248CCC500

Integration File signal 1: autoint1.e
 Integration File signal 2: autoint2.e
 Quant Time: Apr 12 22:13:17 2023
 Quant Method : Z:\pestpcbsrv\HPCHEM1\ECD_O\methods\P0040323.M
 Quant Title : GC EXTRACTABLES
 QLast Update : Tue Apr 04 06:20:55 2023
 Response via : Initial Calibration
 Integrator: ChemStation

Volume Inj. : 2 µl
 Signal #1 Phase : ZB-MR1 Signal #2 Phase: ZB-MR2
 Signal #1 Info : 30Mx0.32mmx 0.50µ Signal #2 Info : 30M x 0.32mm x 0.25µm

Compound	RT#1	RT#2	Resp#1	Resp#2	ng/ml	ng/ml

System Monitoring Compounds						
1) SA Tetrachlo...	4.418	3.622	178.8E6	65414640	47.829	51.369
2) SA Decachlor...	10.245	8.642	123.7E6	53524945	55.291	53.536
Target Compounds						
21) L5 AR-1248-1	5.595	4.704	32797990	12635164	487.470	529.742
22) L5 AR-1248-2	5.871	4.942	51483274	19280648	470.654	484.036
23) L5 AR-1248-3	6.076	4.983	57717301	20629978	478.107	494.261
24) L5 AR-1248-4	6.484	5.154	53318707	23620822	496.462	502.313
25) L5 AR-1248-5	6.523	5.547	56757573	19739899	489.189	528.739

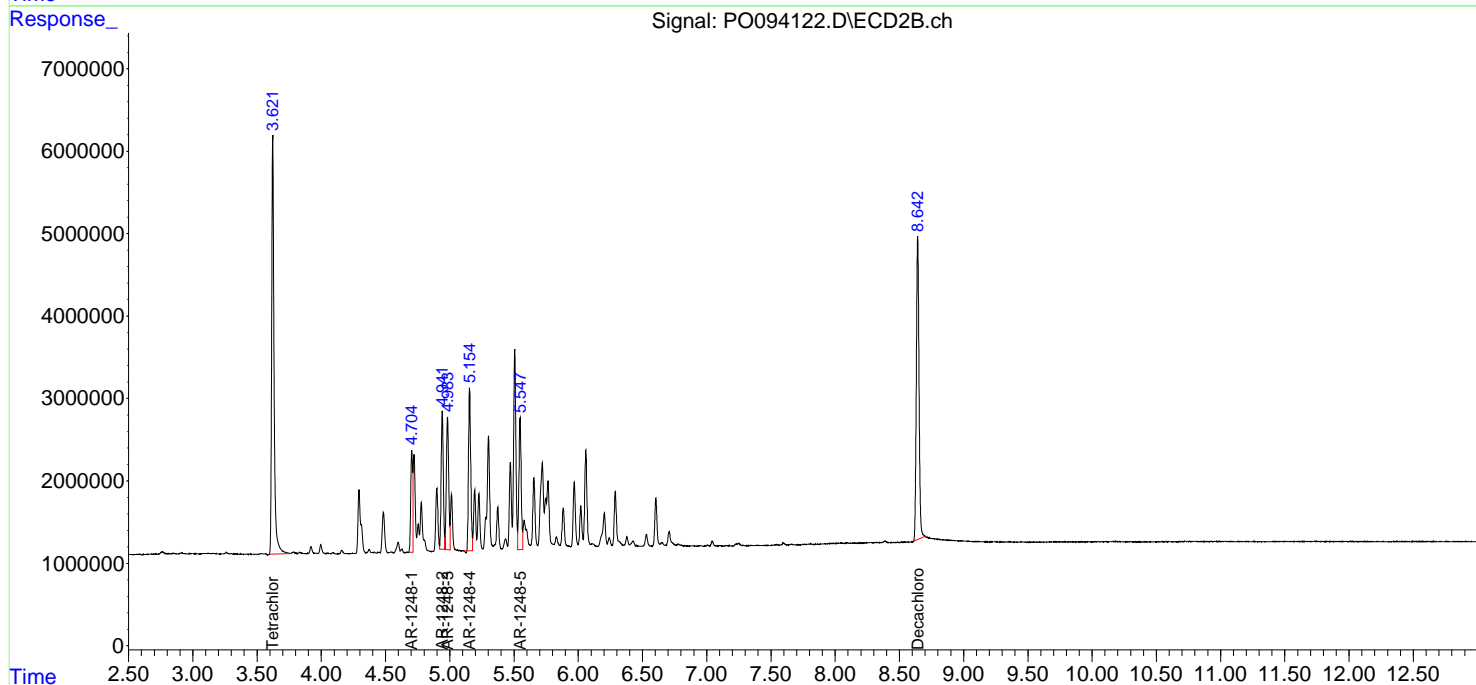
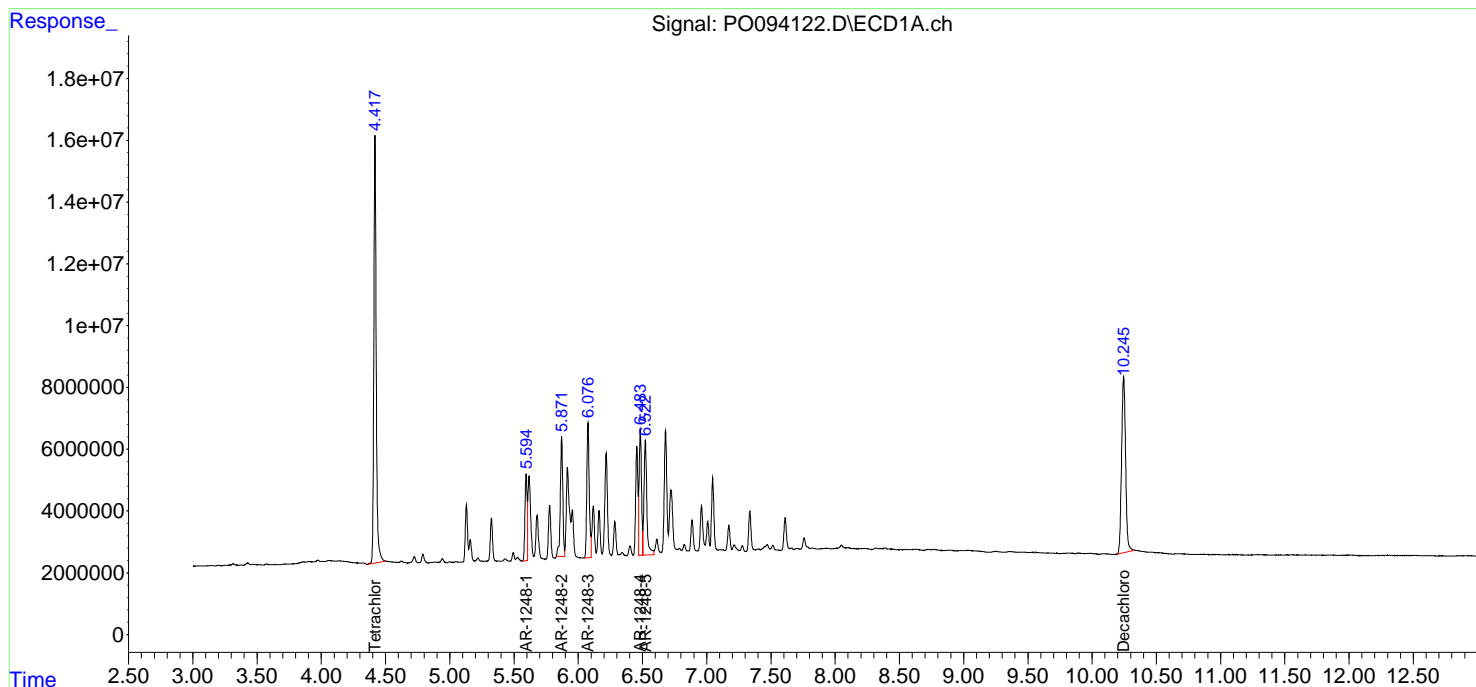
(f)=RT Delta > 1/2 Window (#)=Amounts differ by > 25% (m)=manual int.

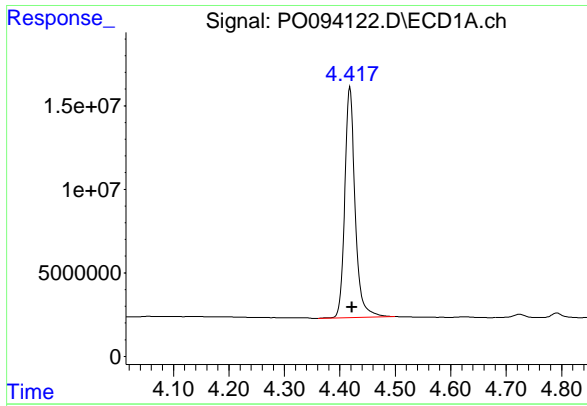
Data Path : Z:\pestpcbsrv\HPCHEM1\ECD_O\Data\PO041223\
Data File : PO094122.D
Signal(s) : Signal #1: ECD1A.ch Signal #2: ECD2B.ch
Acq On : 12 Apr 2023 09:18
Operator : YP/AJ
Sample : AR1248CCC500
Misc :
ALS Vial : 5 Sample Multiplier: 1

Instrument :
ECD_O
ClientSampleId :
AR1248CCC500

Integration File signal 1: autoint1.e
Integration File signal 2: autoint2.e
Quant Time: Apr 12 22:13:17 2023
Quant Method : Z:\pestpcbsrv\HPCHEM1\ECD_O\methods\PO040323.M
Quant Title : GC EXTRACTABLES
QLast Update : Tue Apr 04 06:20:55 2023
Response via : Initial Calibration
Integrator: ChemStation

Volume Inj. : 2 µl
Signal #1 Phase : ZB-MR1 Signal #2 Phase: ZB-MR2
Signal #1 Info : 30Mx0.32mmx 0.50µm Signal #2 Info : 30M x 0.32mm x 0.25µm

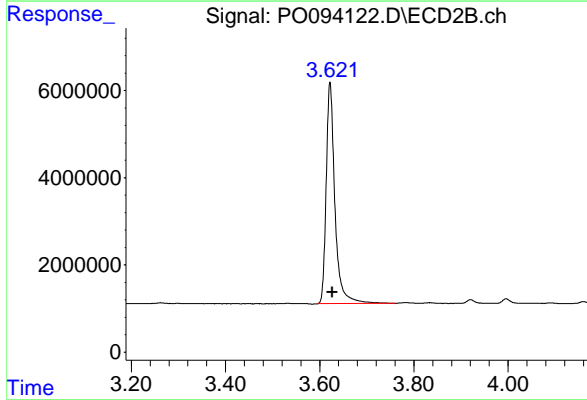




#1 Tetrachloro-m-xylene

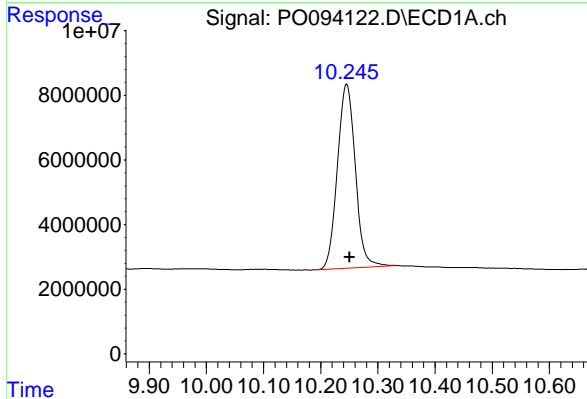
R.T.: 4.418 min
 Delta R.T.: -0.004 min
 Response: 178793797
 Conc: 47.83 ng/ml

Instrument :
 ECD_O
 ClientSampleId :
 AR1248CCC500



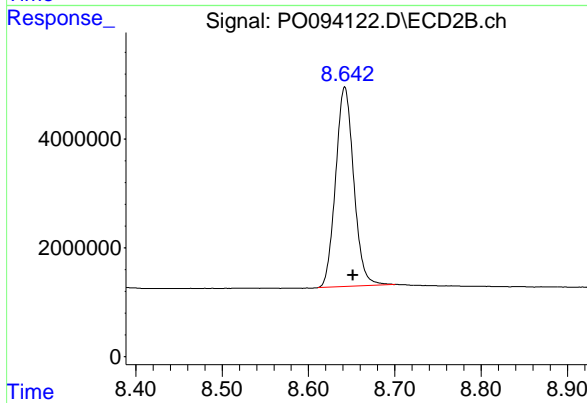
#1 Tetrachloro-m-xylene

R.T.: 3.622 min
 Delta R.T.: -0.005 min
 Response: 65414640
 Conc: 51.37 ng/ml



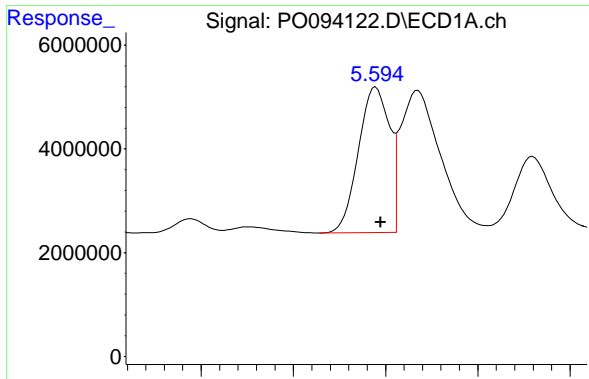
#2 Decachlorobiphenyl

R.T.: 10.245 min
 Delta R.T.: -0.005 min
 Response: 123680535
 Conc: 55.29 ng/ml



#2 Decachlorobiphenyl

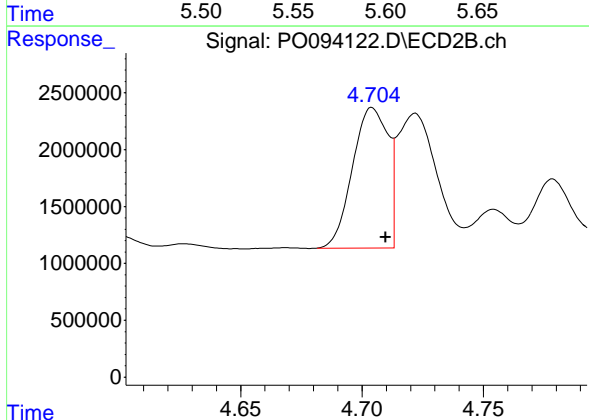
R.T.: 8.642 min
 Delta R.T.: -0.009 min
 Response: 53524945
 Conc: 53.54 ng/ml



#21 AR-1248-1

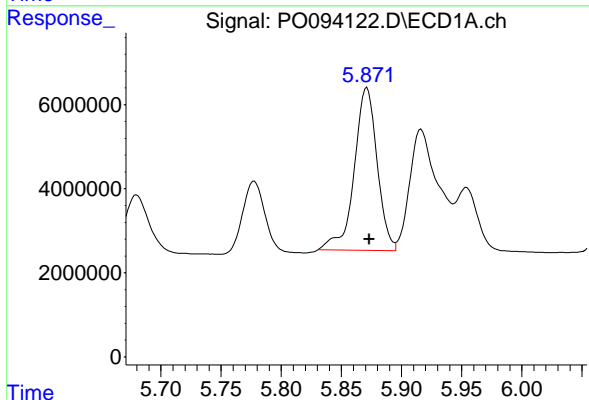
R.T.: 5.595 min
 Delta R.T.: -0.003 min
 Response: 32797990
 Conc: 487.47 ng/ml

Instrument :
 ECD_O
 ClientSampleId :
 AR1248CCC500



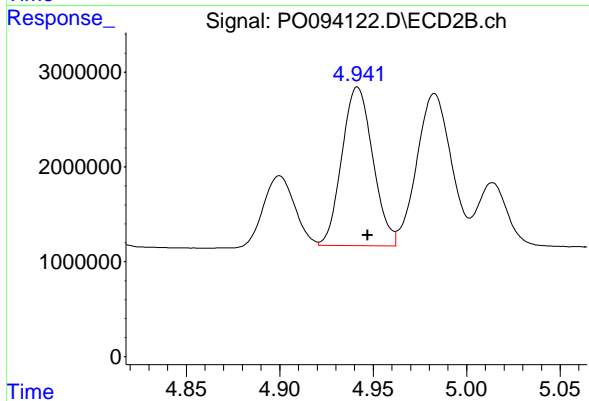
#21 AR-1248-1

R.T.: 4.704 min
 Delta R.T.: -0.005 min
 Response: 12635164
 Conc: 529.74 ng/ml



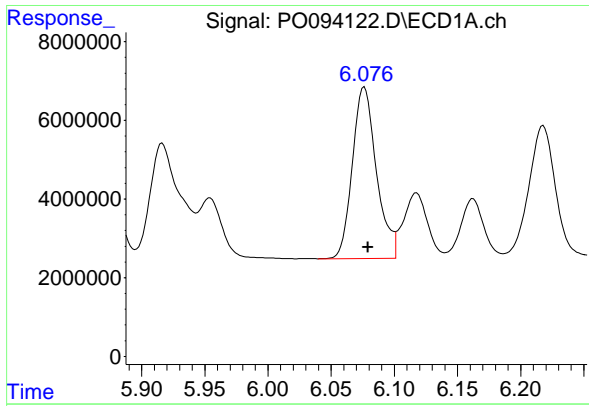
#22 AR-1248-2

R.T.: 5.871 min
 Delta R.T.: -0.002 min
 Response: 51483274
 Conc: 470.65 ng/ml



#22 AR-1248-2

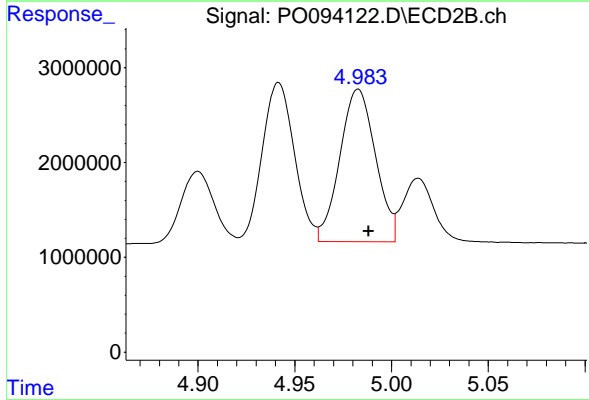
R.T.: 4.942 min
 Delta R.T.: -0.005 min
 Response: 19280648
 Conc: 484.04 ng/ml



#23 AR-1248-3

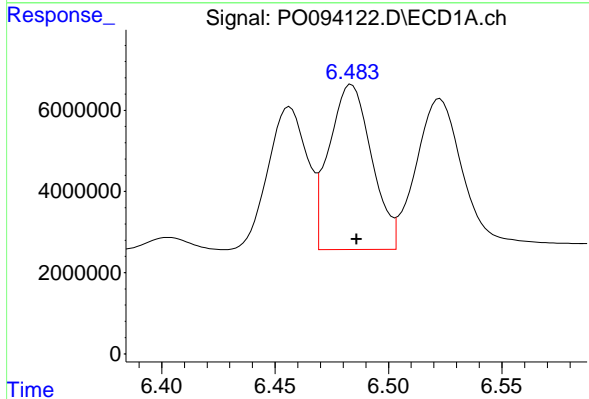
R.T.: 6.076 min
 Delta R.T.: -0.003 min
 Response: 57717301
 Conc: 478.11 ng/ml

Instrument :
 ECD_O
 ClientSampleId :
 AR1248CCC500



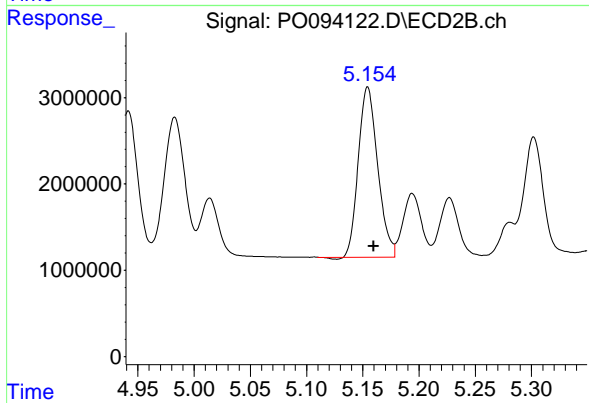
#23 AR-1248-3

R.T.: 4.983 min
 Delta R.T.: -0.005 min
 Response: 20629978
 Conc: 494.26 ng/ml



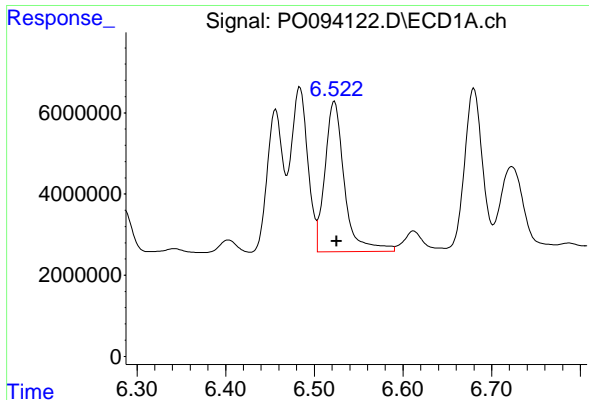
#24 AR-1248-4

R.T.: 6.484 min
 Delta R.T.: -0.002 min
 Response: 53318707
 Conc: 496.46 ng/ml



#24 AR-1248-4

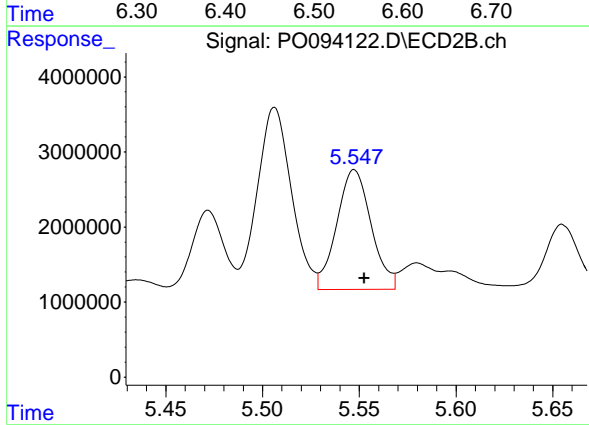
R.T.: 5.154 min
 Delta R.T.: -0.005 min
 Response: 23620822
 Conc: 502.31 ng/ml



#25 AR-1248-5

R.T.: 6.523 min
Delta R.T.: -0.002 min
Response: 56757573
Conc: 489.19 ng/ml

Instrument :
ECD_O
ClientSampleId :
AR1248CCC500



#25 AR-1248-5

R.T.: 5.547 min
Delta R.T.: -0.005 min
Response: 19739899
Conc: 528.74 ng/ml