

Data Path : Z:\pestpcbsrv\HPCHEM1\ECD_0\Data\P0041223\
 Data File : P0094169.D
 Signal(s) : Signal #1: ECD1A.ch Signal #2: ECD2B.ch
 Acq On : 13 Apr 2023 00:19
 Operator : YP/AJ
 Sample : AR1248CCC500
 Misc :
 ALS Vial : 5 Sample Multiplier: 1

Instrument :
 ECD_0
ClientSampleId :
 AR1248CCC500

**Manual Integrations
 APPROVED**

Reviewed By :Yogesh Patel 04/13/2023
 Supervised By :Ankita Jodhani 04/13/2023

Integration File signal 1: autoint1.e
 Integration File signal 2: autoint2.e
 Quant Time: Apr 13 05:39:00 2023
 Quant Method : Z:\pestpcbsrv\HPCHEM1\ECD_0\methods\P0040323.M
 Quant Title : GC EXTRACTABLES
 QLast Update : Tue Apr 04 06:20:55 2023
 Response via : Initial Calibration
 Integrator: ChemStation

Volume Inj. : 2 µl
 Signal #1 Phase : ZB-MR1 Signal #2 Phase: ZB-MR2
 Signal #1 Info : 30Mx0.32mmx 0.50µ Signal #2 Info : 30M x 0.32mm x 0.25µm

Compound	RT#1	RT#2	Resp#1	Resp#2	ng/ml	ng/ml

System Monitoring Compounds						
1) SA Tetrachlo...	4.419	3.623	162.1E6	61349056	43.358	48.177
2) SA Decachlor...	10.245	8.642	112.8E6	48975161	50.428	48.986
Target Compounds						
21) L5 AR-1248-1	5.595	4.705	30349933	12172774	451.085	510.355
22) L5 AR-1248-2	5.871	4.943	46163007	16587459	422.017	416.424
23) L5 AR-1248-3	6.077	4.984	53414415	21323118	442.464	510.868
24) L5 AR-1248-4	6.484	5.156	50665205	26163290	471.755	556.381
25) L5 AR-1248-5	6.523	5.548	56990758	19702527	491.198	527.738m

(f)=RT Delta > 1/2 Window (#)=Amounts differ by > 25% (m)=manual int.

Data Path : Z:\pestpcbsrv\HPCHEM1\ECD_O\Data\PO041223\
 Data File : PO094169.D
 Signal(s) : Signal #1: ECD1A.ch Signal #2: ECD2B.ch
 Acq On : 13 Apr 2023 00:19
 Operator : YP/AJ
 Sample : AR1248CCC500
 Misc :
 ALS Vial : 5 Sample Multiplier: 1

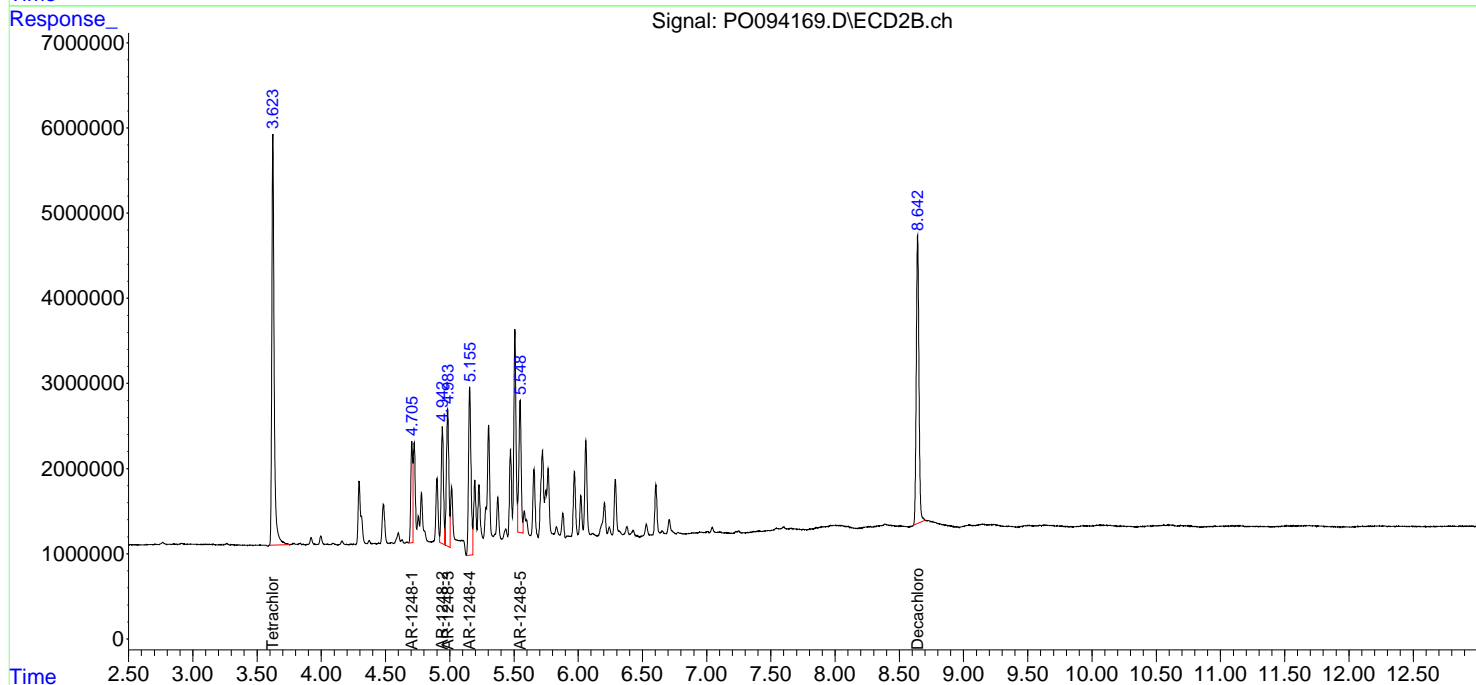
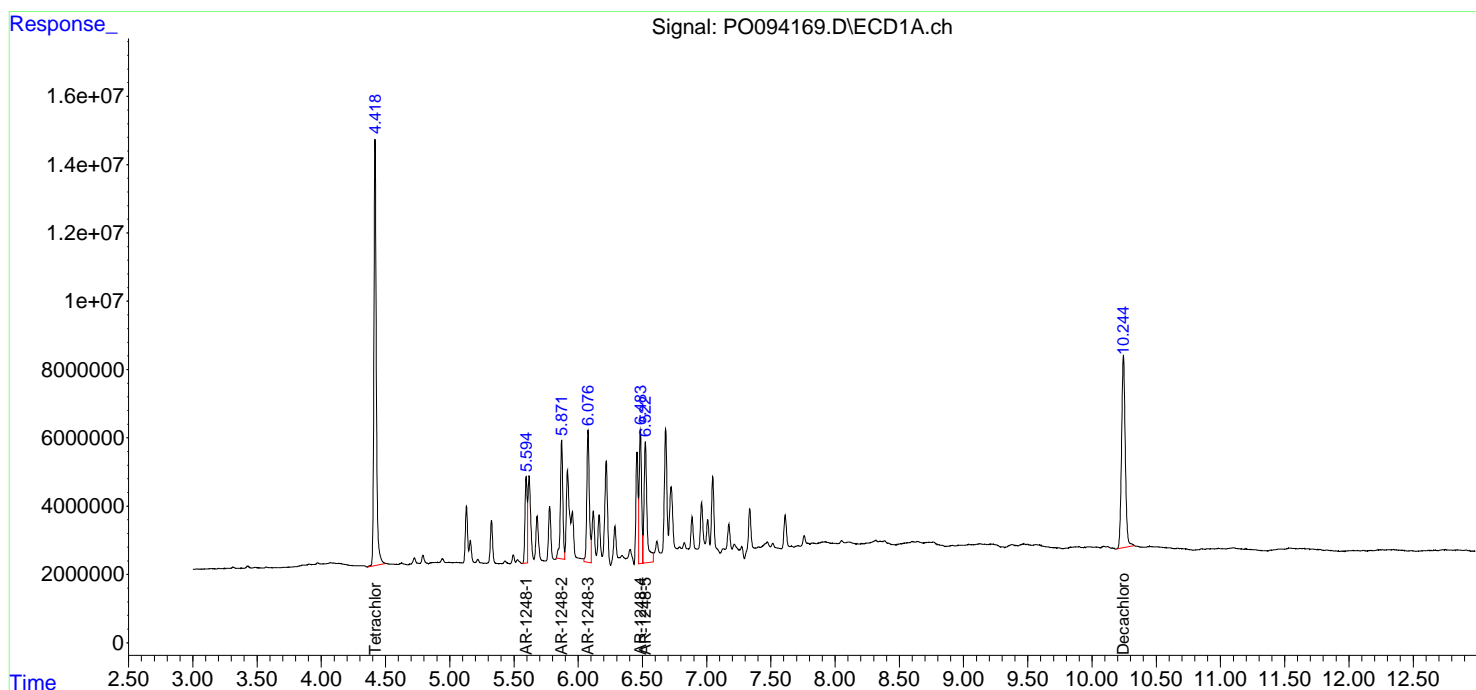
Instrument :
 ECD_O
 ClientSampleId :
 AR1248CCC500

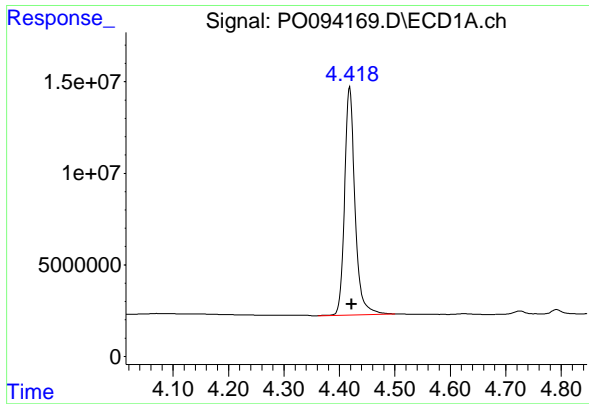
Manual Integrations
 APPROVED

Reviewed By :Yogesh Patel 04/13/2023
 Supervised By :Ankita Jodhani 04/13/2023

Integration File signal 1: autoint1.e
 Integration File signal 2: autoint2.e
 Quant Time: Apr 13 05:39:00 2023
 Quant Method : Z:\pestpcbsrv\HPCHEM1\ECD_O\methods\PO040323.M
 Quant Title : GC EXTRACTABLES
 QLast Update : Tue Apr 04 06:20:55 2023
 Response via : Initial Calibration
 Integrator: ChemStation

Volume Inj. : 2 µl
 Signal #1 Phase : ZB-MR1 Signal #2 Phase: ZB-MR2
 Signal #1 Info : 30Mx0.32mmx 0.50µ Signal #2 Info : 30M x 0.32mm x 0.25µm





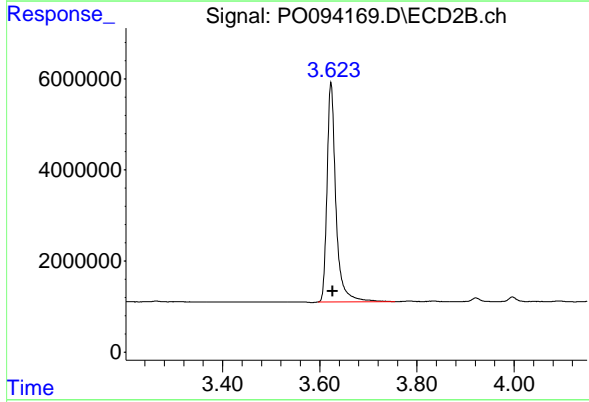
#1 Tetrachloro-m-xylene

R.T.: 4.419 min
 Delta R.T.: -0.003 min
 Response: 162080162
 Conc: 43.36 ng/ml

Instrument :
 ECD_O
 ClientSampleId :
 AR1248CCC500

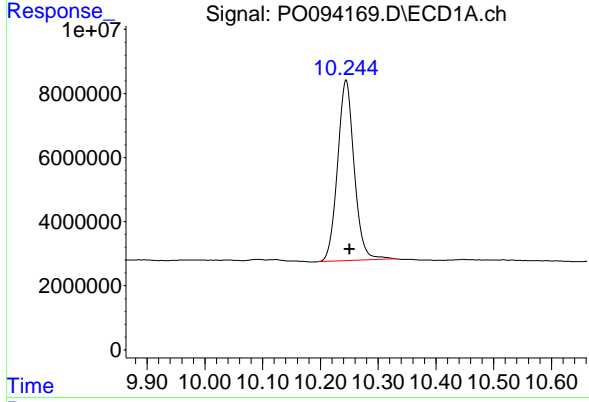
Manual Integrations
 APPROVED

Reviewed By :Yogesh Patel 04/13/2023
 Supervised By :Ankita Jodhani 04/13/2023



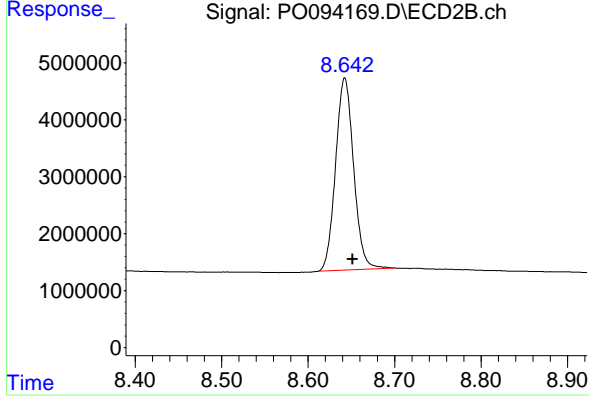
#1 Tetrachloro-m-xylene

R.T.: 3.623 min
 Delta R.T.: -0.004 min
 Response: 61349056
 Conc: 48.18 ng/ml



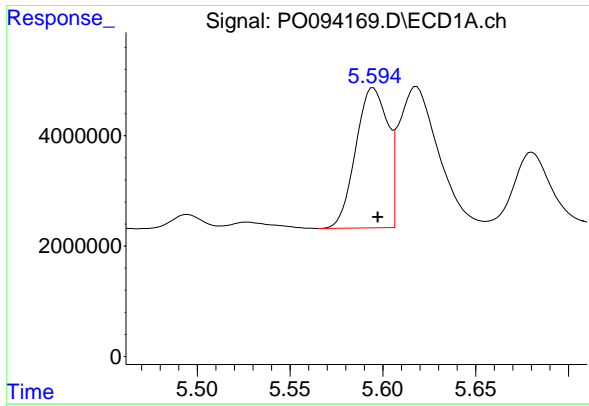
#2 Decachlorobiphenyl

R.T.: 10.245 min
 Delta R.T.: -0.006 min
 Response: 112802445
 Conc: 50.43 ng/ml



#2 Decachlorobiphenyl

R.T.: 8.642 min
 Delta R.T.: -0.009 min
 Response: 48975161
 Conc: 48.99 ng/ml



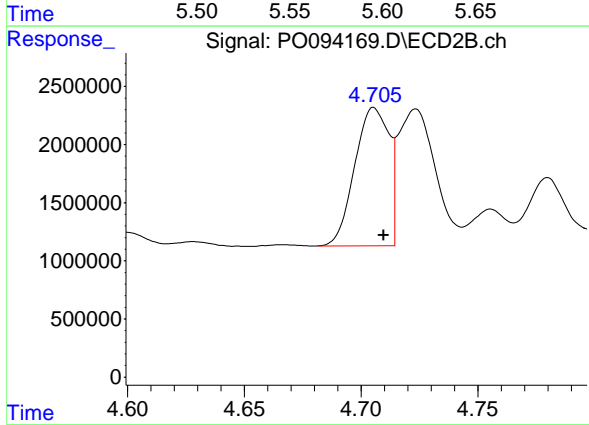
#21 AR-1248-1

R.T.: 5.595 min
 Delta R.T.: -0.003 min
 Response: 30349933
 Conc: 451.08 ng/ml

Instrument :
 ECD_O
 ClientSampleId :
 AR1248CCC500

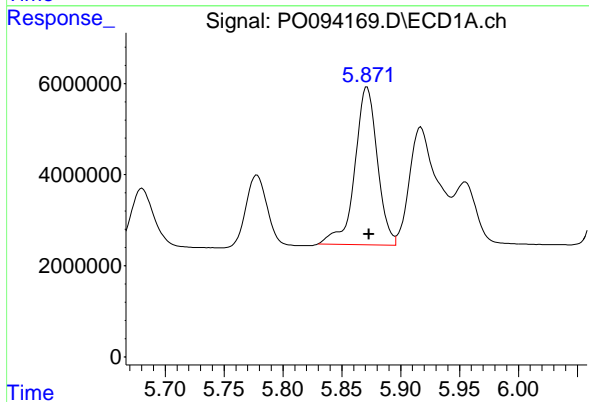
Manual Integrations
 APPROVED

Reviewed By :Yogesh Patel 04/13/2023
 Supervised By :Ankita Jodhani 04/13/2023



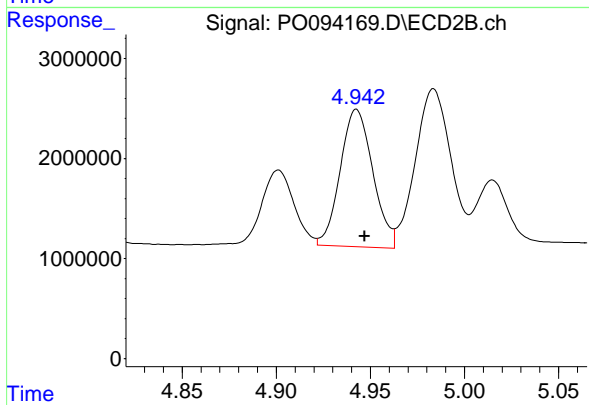
#21 AR-1248-1

R.T.: 4.705 min
 Delta R.T.: -0.004 min
 Response: 12172774
 Conc: 510.36 ng/ml



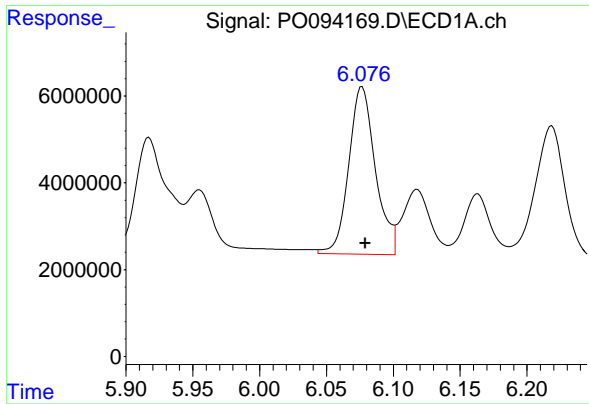
#22 AR-1248-2

R.T.: 5.871 min
 Delta R.T.: -0.002 min
 Response: 46163007
 Conc: 422.02 ng/ml



#22 AR-1248-2

R.T.: 4.943 min
 Delta R.T.: -0.004 min
 Response: 16587459
 Conc: 416.42 ng/ml



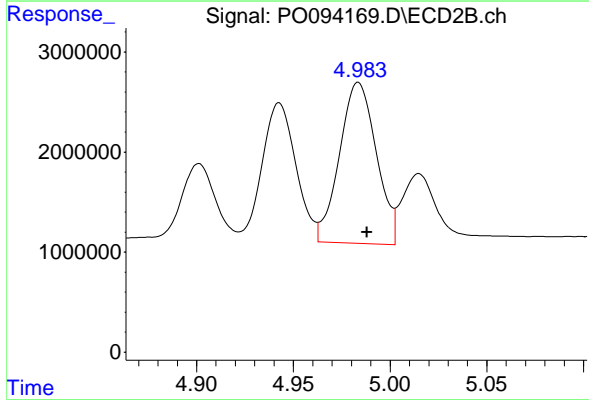
#23 AR-1248-3

R.T.: 6.077 min
 Delta R.T.: -0.003 min
 Response: 53414415
 Conc: 442.46 ng/ml

Instrument :
 ECD_O
 ClientSampleId :
 AR1248CCC500

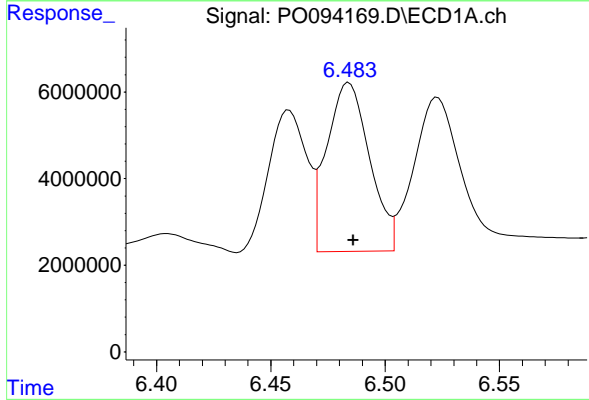
Manual Integrations
 APPROVED

Reviewed By :Yogesh Patel 04/13/2023
 Supervised By :Ankita Jodhani 04/13/2023



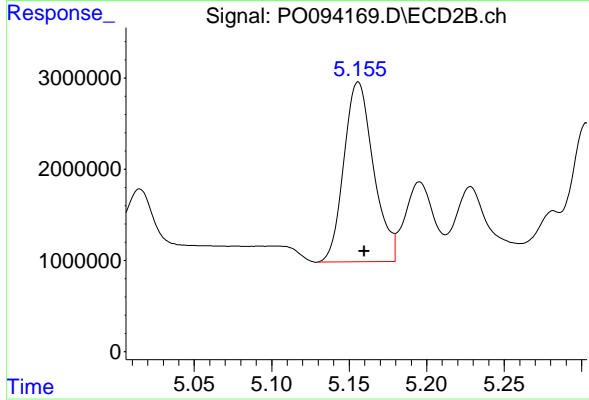
#23 AR-1248-3

R.T.: 4.984 min
 Delta R.T.: -0.005 min
 Response: 21323118
 Conc: 510.87 ng/ml



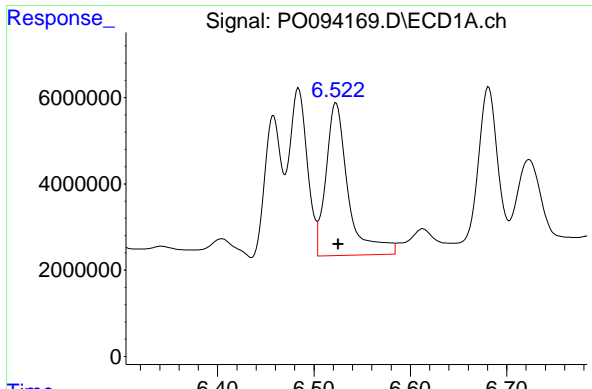
#24 AR-1248-4

R.T.: 6.484 min
 Delta R.T.: -0.002 min
 Response: 50665205
 Conc: 471.75 ng/ml



#24 AR-1248-4

R.T.: 5.156 min
 Delta R.T.: -0.004 min
 Response: 26163290
 Conc: 556.38 ng/ml



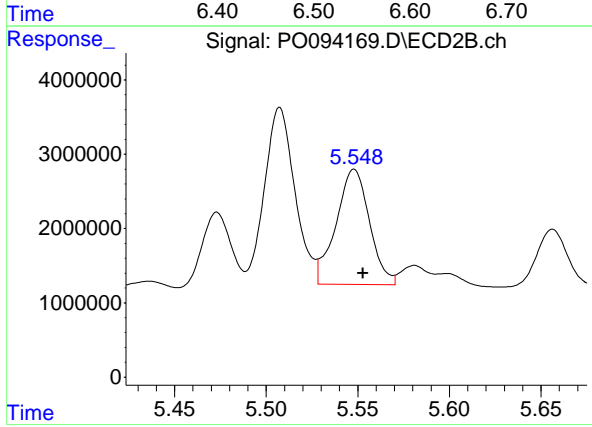
#25 AR-1248-5

R.T.: 6.523 min
 Delta R.T.: -0.002 min
 Response: 56990758
 Conc: 491.20 ng/ml

Instrument :
 ECD_O
 ClientSampleId :
 AR1248CCC500

Manual Integrations
 APPROVED

Reviewed By :Yogesh Patel 04/13/2023
 Supervised By :Ankita Jodhani 04/13/2023



#25 AR-1248-5

R.T.: 5.548 min
 Delta R.T.: -0.005 min
 Response: 19702527
 Conc: 527.74 ng/ml m