

Data Path : Z:\pestpcbsrv\HPCHEM1\ECD_0\Data\P0041321\
 Data File : P0076941.D
 Signal(s) : Signal #1: ECD1A.CH Signal #2: ECD2B.CH
 Acq On : 13 Apr 2021 9:40
 Operator : AJ/MA
 Sample : AR1254CCC500
 Misc :
 ALS Vial : 4 Sample Multiplier: 1

Instrument :
 ECD_0
ClientSampleId :
 AR1254CCC500

Manual Integrations
APPROVED
 Ankita
 4/14/2021 1:53:21 PM

Integration File signal 1: autoint1.e
 Integration File signal 2: autoint2.e
 Quant Time: Apr 13 13:27:22 2021
 Quant Method : Z:\pestpcbsrv\HPCHEM1\ECD_0\methods\P0040121.M
 Quant Title : GC EXTRACTABLES
 QLast Update : Fri Apr 02 05:20:17 2021
 Response via : Initial Calibration
 Integrator: ChemStation 6890 Scale Mode: Small noise peaks clipped

Volume Inj. : 2 µl
 Signal #1 Phase : ZB-MR1 Signal #2 Phase: ZB-MR2
 Signal #1 Info : 30Mx0.32mmx 0.50µ Signal #2 Info : 30M x 0.32mm x 0.25µm

Compound	RT#1	RT#2	Resp#1	Resp#2	ng/ml	ng/ml

System Monitoring Compounds						
1) SA Tetrachlo...	4.899	3.895	4829283	2469589	51.920	49.212
2) SA Decachlor...	10.864	9.136	4434272	2022956	47.876	41.688
Target Compounds						
26) L6 AR-1254-1	7.127	6.001	1832329	1348669	576.470	514.537m
27) L6 AR-1254-2	7.357	6.160	2662837	1191340	519.713	520.233m
28) L6 AR-1254-3	7.739	6.577	2896245	1899203	525.581	537.366
29) L6 AR-1254-4	8.035	6.816	2131142	1128071	541.274	537.513
30) L6 AR-1254-5	8.462	7.241	2218880	1624491	504.506	498.308

(f)=RT Delta > 1/2 Window (#)=Amounts differ by > 25% (m)=manual int.

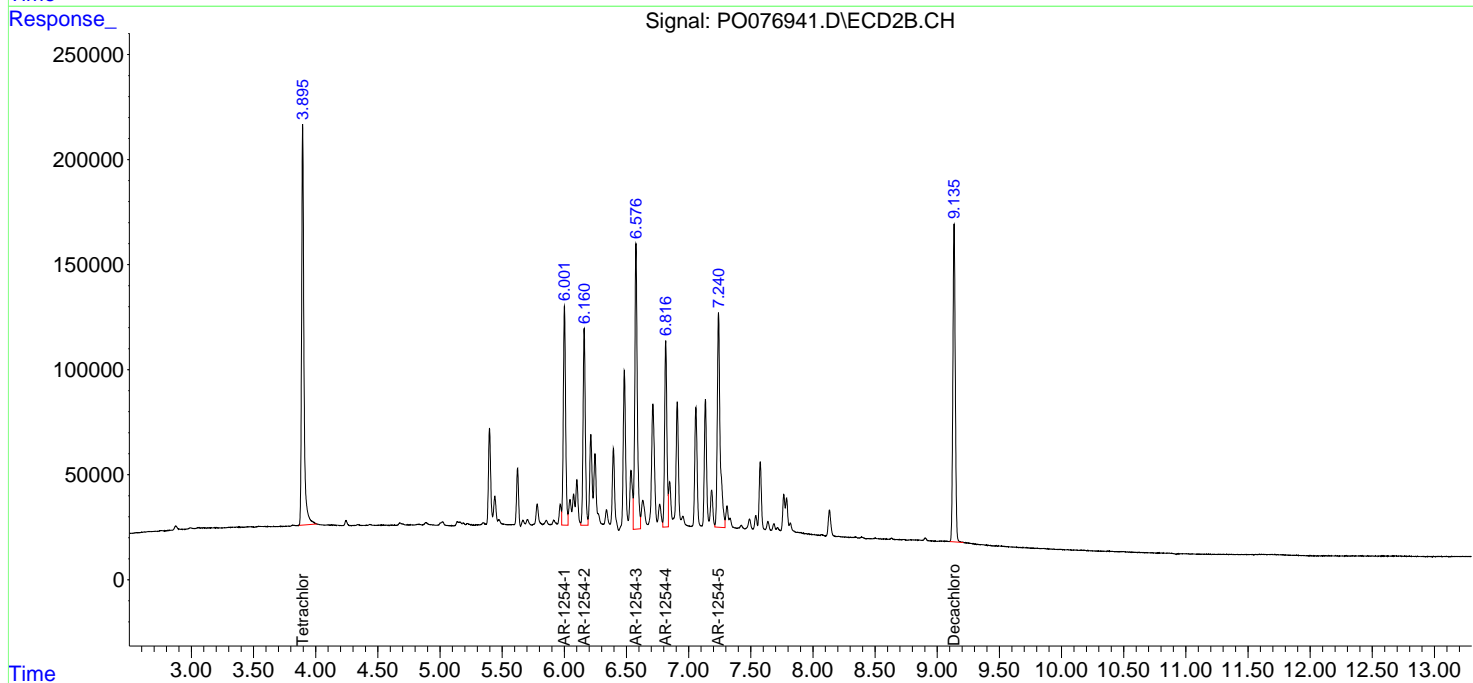
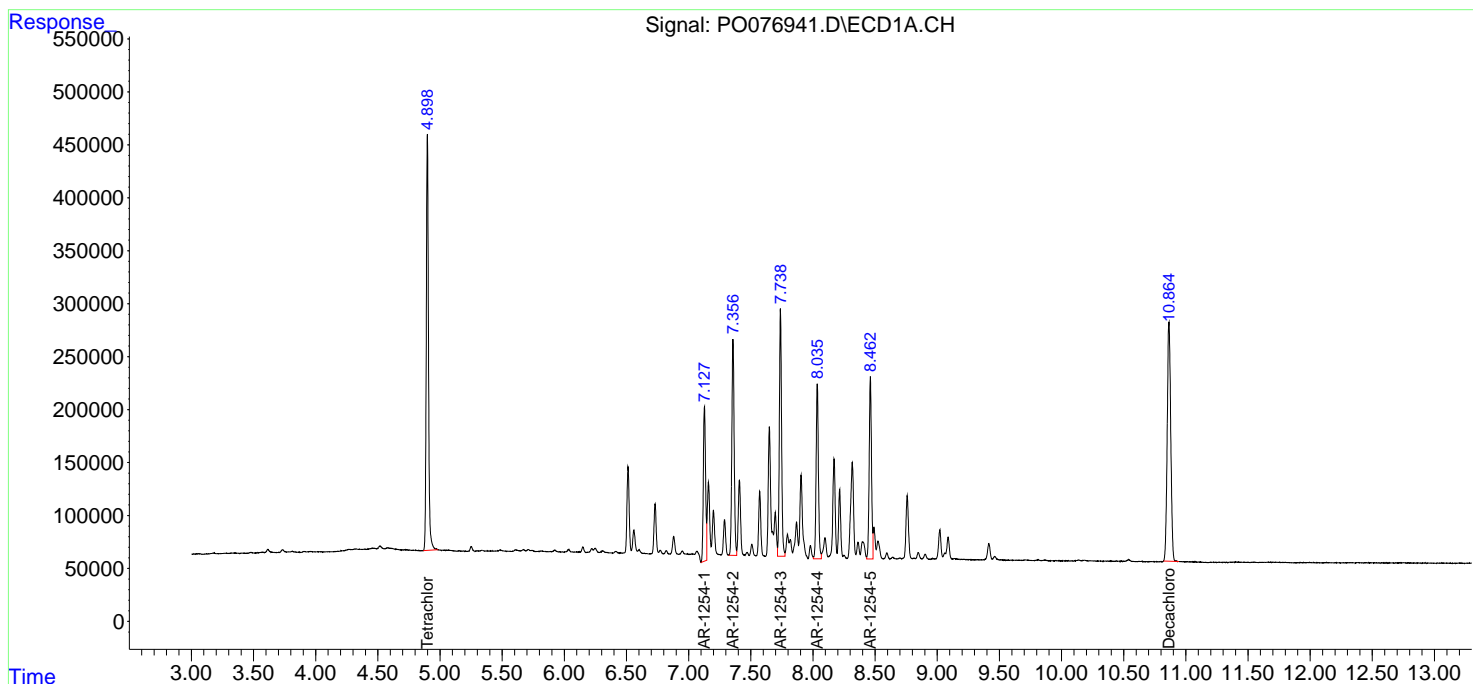
Data Path : Z:\pestpcbsrv\HPCHEM1\ECD_0\Data\P0041321\
 Data File : P0076941.D
 Signal(s) : Signal #1: ECD1A.CH Signal #2: ECD2B.CH
 Acq On : 13 Apr 2021 9:40
 Operator : AJ/MA
 Sample : AR1254CCC500
 Misc :
 ALS Vial : 4 Sample Multiplier: 1

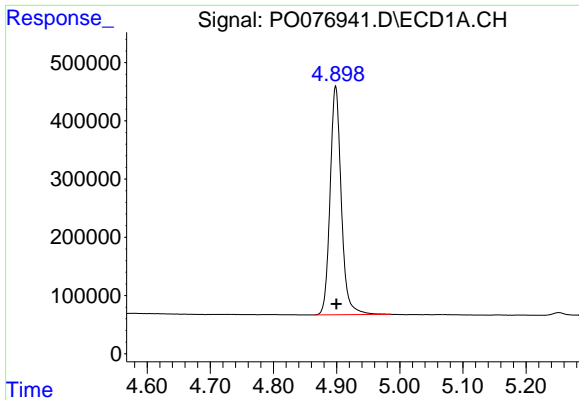
Instrument :
 ECD_O
 ClientSampled :
 AR1254CCC500

Manual Integrations
APPROVED
 Ankita
 4/14/2021 1:53:21 PM

Integration File signal 1: autoint1.e
 Integration File signal 2: autoint2.e
 Quant Time: Apr 13 13:27:22 2021
 Quant Method : Z:\pestpcbsrv\HPCHEM1\ECD_0\methods\P0040121.M
 Quant Title : GC EXTRACTABLES
 QLast Update : Fri Apr 02 05:20:17 2021
 Response via : Initial Calibration
 Integrator: ChemStation 6890 Scale Mode: Small noise peaks clipped

Volume Inj. : 2 µl
 Signal #1 Phase : ZB-MR1 Signal #2 Phase: ZB-MR2
 Signal #1 Info : 30Mx0.32mmx 0.50µ Signal #2 Info : 30M x 0.32mm x 0.25µm

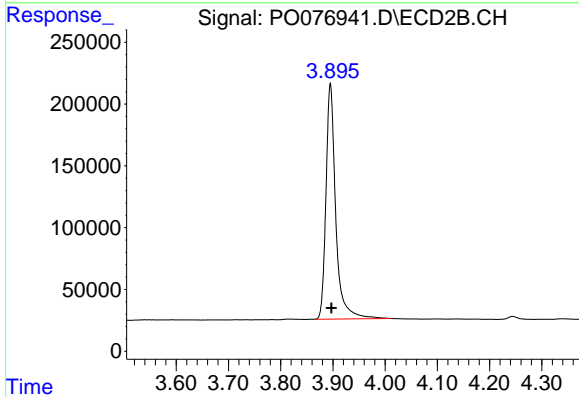




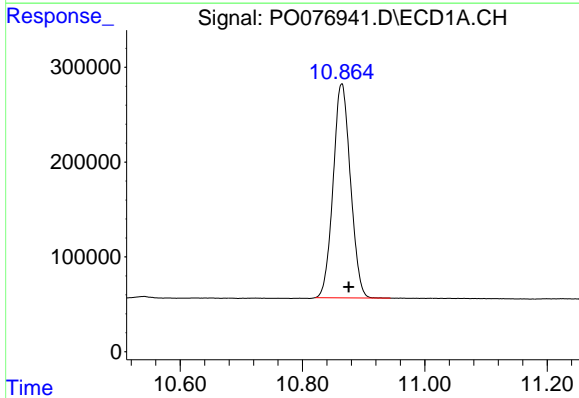
#1 Tetrachloro-m-xylene
 R.T.: 4.899 min
 Delta R.T.: -0.002 min
 Response: 4829283
 Conc: 51.92 ng/ml

Instrument :
 ECD_O
ClientSampled :
 AR1254CCC500

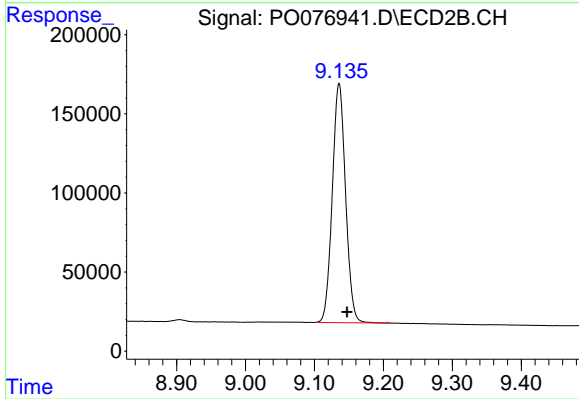
Manual Integrations
APPROVED
 Ankita
 4/14/2021 1:53:21 PM



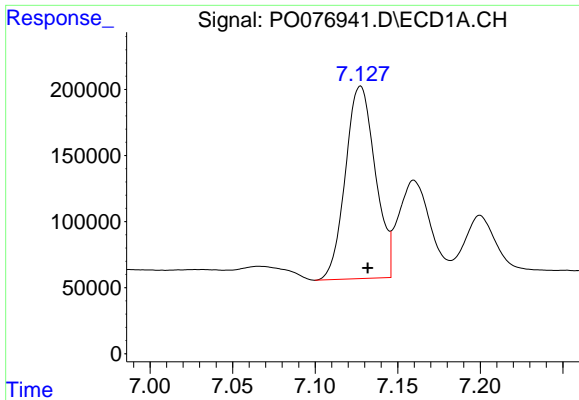
#1 Tetrachloro-m-xylene
 R.T.: 3.895 min
 Delta R.T.: -0.002 min
 Response: 2469589
 Conc: 49.21 ng/ml



#2 Decachlorobiphenyl
 R.T.: 10.864 min
 Delta R.T.: -0.011 min
 Response: 4434272
 Conc: 47.88 ng/ml



#2 Decachlorobiphenyl
 R.T.: 9.136 min
 Delta R.T.: -0.012 min
 Response: 2022956
 Conc: 41.69 ng/ml

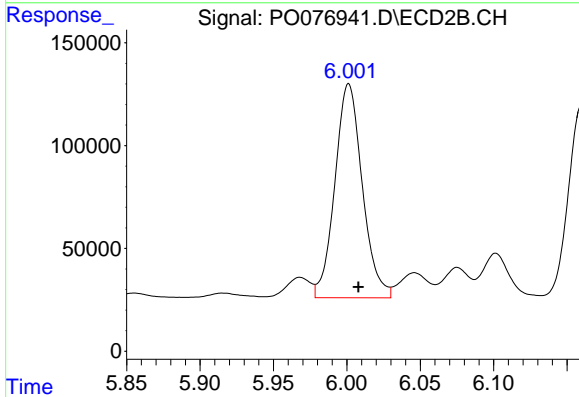


#26 AR-1254-1

R.T.: 7.127 min
 Delta R.T.: -0.004 min
 Response: 1832329
 Conc: 576.47 ng/ml

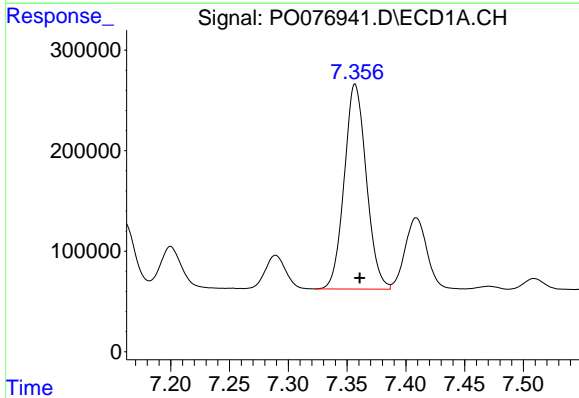
Instrument :
 ECD_O
ClientSampled :
 AR1254CCC500

Manual Integrations
APPROVED
 Ankita
 4/14/2021 1:53:21 PM



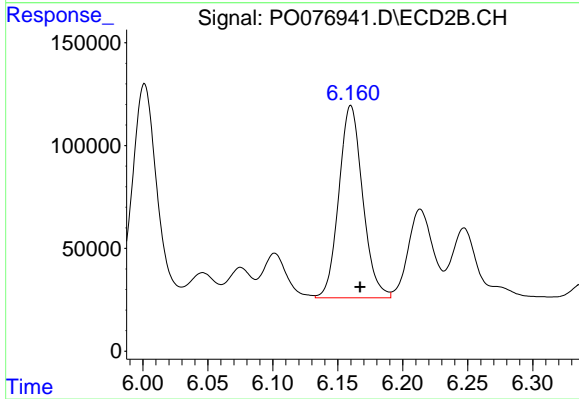
#26 AR-1254-1

R.T.: 6.001 min
 Delta R.T.: -0.007 min
 Response: 1348669
 Conc: 514.54 ng/ml m



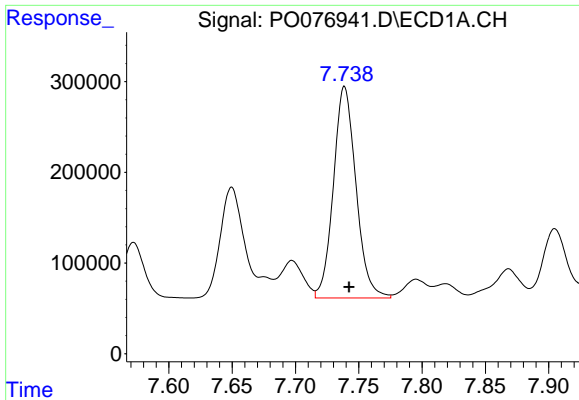
#27 AR-1254-2

R.T.: 7.357 min
 Delta R.T.: -0.004 min
 Response: 2662837
 Conc: 519.71 ng/ml



#27 AR-1254-2

R.T.: 6.160 min
 Delta R.T.: -0.007 min
 Response: 1191340
 Conc: 520.23 ng/ml m



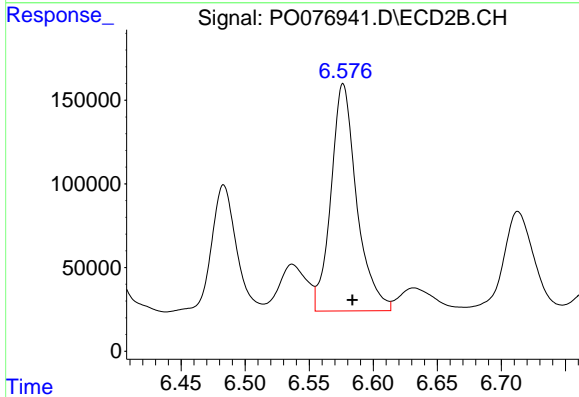
#28 AR-1254-3

R.T.: 7.739 min
 Delta R.T.: -0.004 min
 Response: 2896245
 Conc: 525.58 ng/ml

Instrument :
 ECD_O
 ClientSampled :
 AR1254CCC500

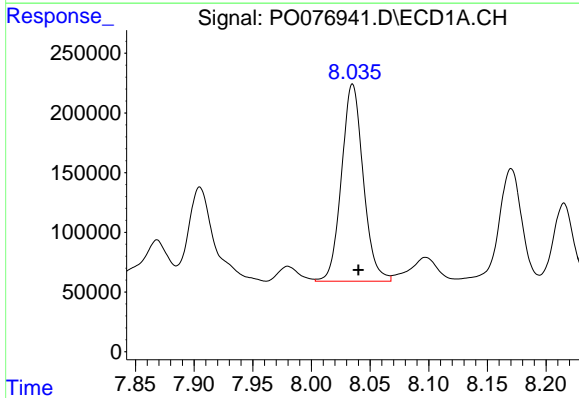
Manual Integrations
 APPROVED

Ankita
 4/14/2021 1:53:21 PM



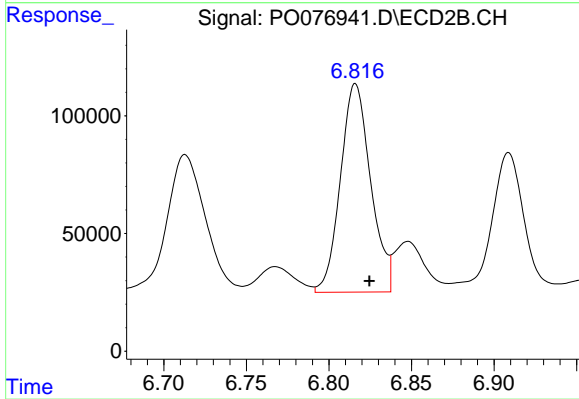
#28 AR-1254-3

R.T.: 6.577 min
 Delta R.T.: -0.007 min
 Response: 1899203
 Conc: 537.37 ng/ml



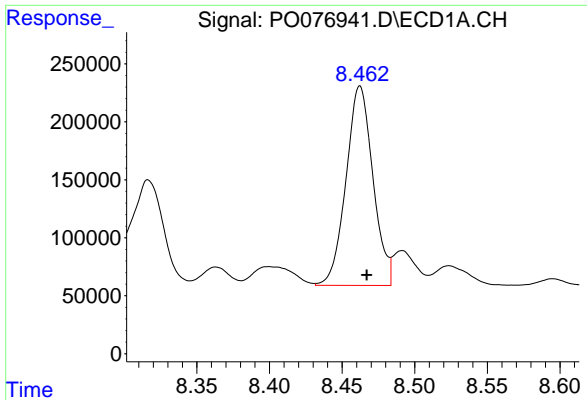
#29 AR-1254-4

R.T.: 8.035 min
 Delta R.T.: -0.005 min
 Response: 2131142
 Conc: 541.27 ng/ml



#29 AR-1254-4

R.T.: 6.816 min
 Delta R.T.: -0.008 min
 Response: 1128071
 Conc: 537.51 ng/ml



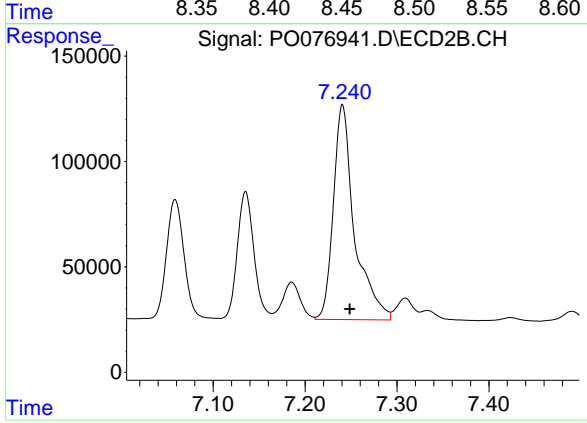
#30 AR-1254-5

R.T.: 8.462 min
Delta R.T.: -0.005 min
Response: 2218880
Conc: 504.51 ng/ml

Instrument :
ECD_O
ClientSampled :
AR1254CCC500

Manual Integrations
APPROVED

Ankita
4/14/2021 1:53:21 PM



#30 AR-1254-5

R.T.: 7.241 min
Delta R.T.: -0.008 min
Response: 1624491
Conc: 498.31 ng/ml