

Data Path : Z:\pestpcbsrv\HPCHEM1\ECD_O\Data\P0041323\
 Data File : P0094205.D
 Signal(s) : Signal #1: ECD1A.ch Signal #2: ECD2B.ch
 Acq On : 13 Apr 2023 16:37
 Operator : YP/AJ
 Sample : 02292-07MS
 Misc :
 ALS Vial : 18 Sample Multiplier: 1

Instrument :
 ECD_O
 ClientSampleId :
 IDW-SO-G2-041123MS

Integration File signal 1: autoint1.e
 Integration File signal 2: autoint2.e
 Quant Time: Apr 13 23:05:59 2023
 Quant Method : Z:\pestpcbsrv\HPCHEM1\ECD_O\methods\P0040323.M
 Quant Title : GC EXTRACTABLES
 QLast Update : Tue Apr 04 06:20:55 2023
 Response via : Initial Calibration
 Integrator: ChemStation

Volume Inj. : 2 µl
 Signal #1 Phase : ZB-MR1 Signal #2 Phase: ZB-MR2
 Signal #1 Info : 30Mx0.32mmx 0.50µ Signal #2 Info : 30M x 0.32mm x 0.25µm

Compound	RT#1	RT#2	Resp#1	Resp#2	ng/ml	ng/ml

System Monitoring Compounds						
1) SA Tetrachlo...	4.421	3.625	75121410	27923926	20.096	21.928
2) SA Decachlor...	10.251	8.647	47532988	22540091	21.249	22.545
Target Compounds						
3) L1 AR-1016-1	5.598	4.709	53066199	21694064	518.915	611.400
4) L1 AR-1016-2	5.621	4.727	79381409	32444415	509.318	600.699
5) L1 AR-1016-3	5.683	4.903	49635292	17116710	503.236	603.904
6) L1 AR-1016-4	5.783	4.946	35306000	15530322	480.166	588.143
7) L1 AR-1016-5	6.079	5.159	41684976	19423285	492.366	593.595
31) L7 AR-1260-1	7.217	6.194	70159310	35468464	480.652	543.901
32) L7 AR-1260-2	7.477	6.384	77642865	40717023	485.104	560.655
33) L7 AR-1260-3	7.839	6.537	53616924	38274254	403.809	527.388 #
34) L7 AR-1260-4	8.066	7.010	62119038	28224307	450.977	508.246
35) L7 AR-1260-5	8.394	7.255	106.2E6	59446516	487.732	572.847

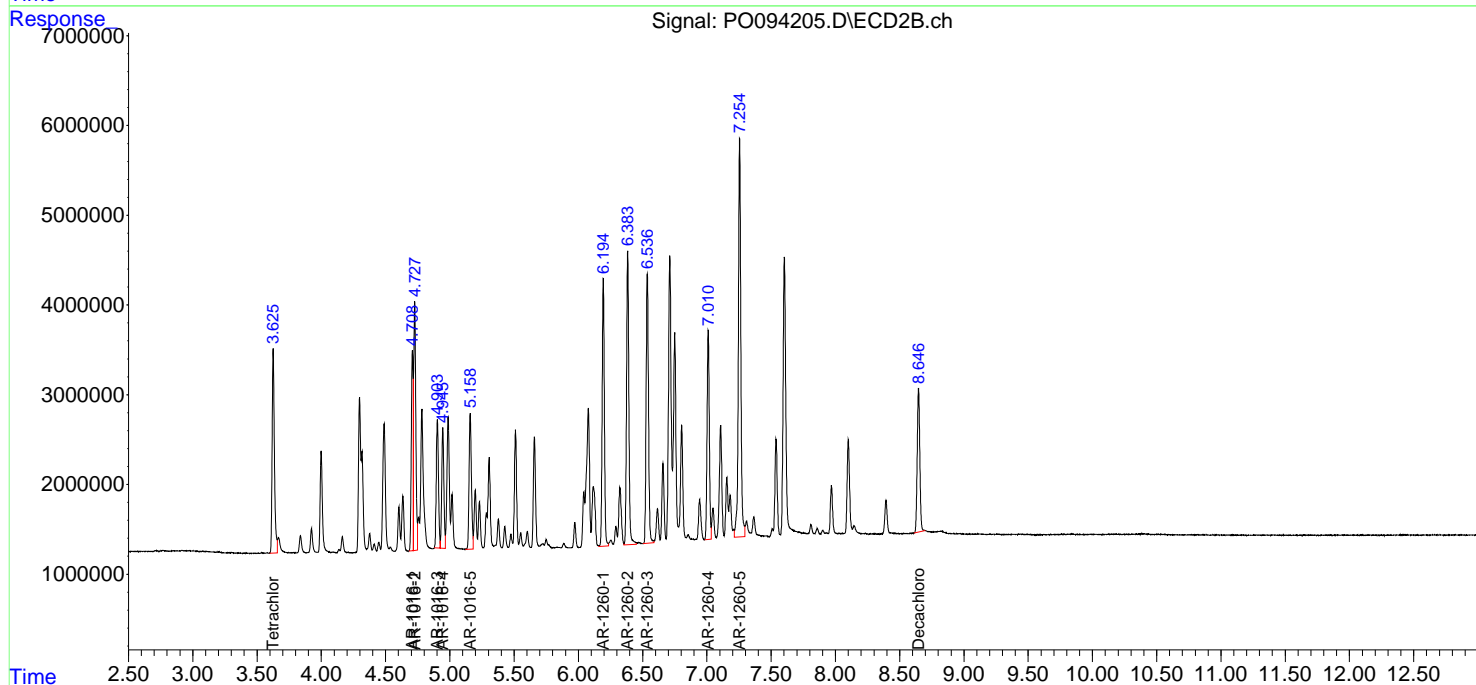
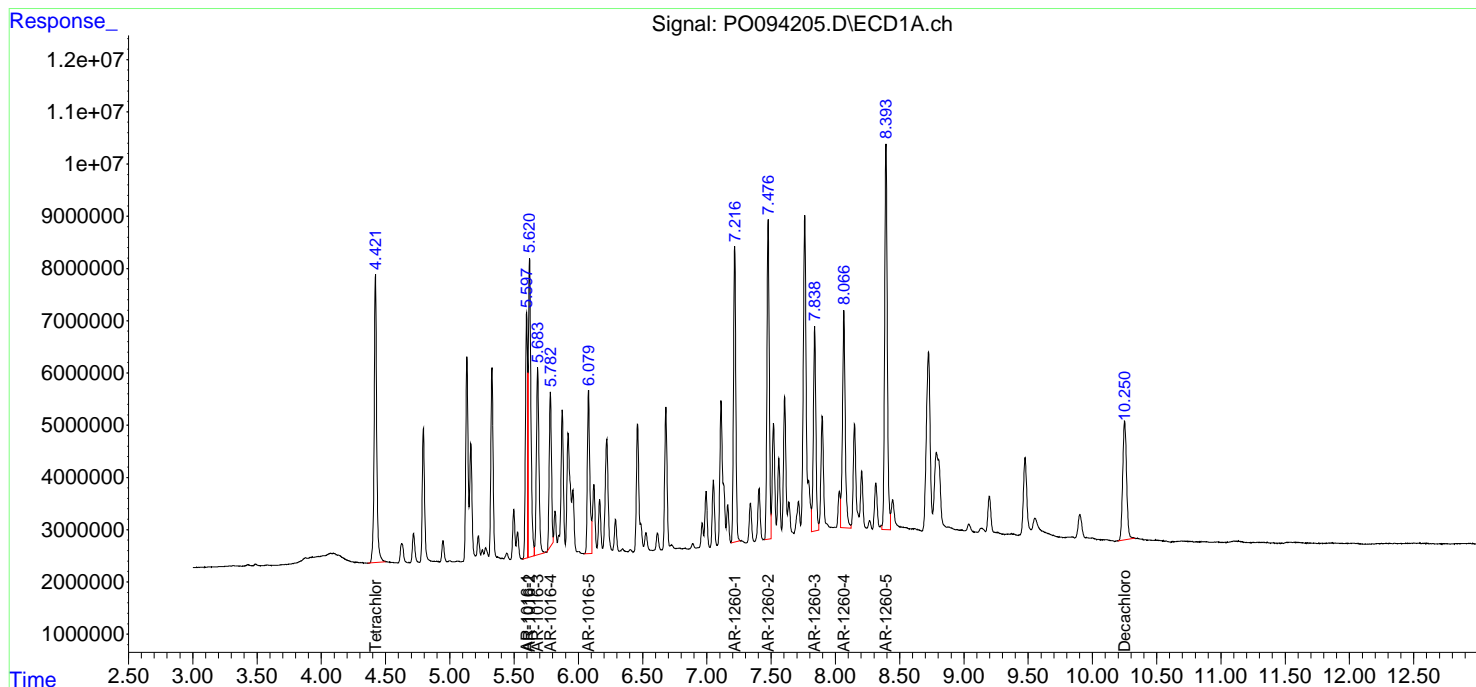
(f)=RT Delta > 1/2 Window (#)=Amounts differ by > 25% (m)=manual int.

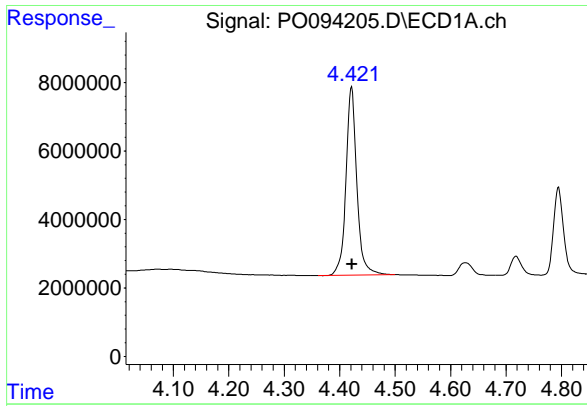
Data Path : Z:\pestpcbsrv\HPCHEM1\ECD_O\Data\PO041323\
 Data File : PO094205.D
 Signal(s) : Signal #1: ECD1A.ch Signal #2: ECD2B.ch
 Acq On : 13 Apr 2023 16:37
 Operator : YP/AJ
 Sample : 02292-07MS
 Misc :
 ALS Vial : 18 Sample Multiplier: 1

Instrument :
 ECD_O
 ClientSampleId :
 IDW-SO-G2-041123MS

Integration File signal 1: autoint1.e
 Integration File signal 2: autoint2.e
 Quant Time: Apr 13 23:05:59 2023
 Quant Method : Z:\pestpcbsrv\HPCHEM1\ECD_O\methods\PO040323.M
 Quant Title : GC EXTRACTABLES
 QLast Update : Tue Apr 04 06:20:55 2023
 Response via : Initial Calibration
 Integrator: ChemStation

Volume Inj. : 2 µl
 Signal #1 Phase : ZB-MR1 Signal #2 Phase: ZB-MR2
 Signal #1 Info : 30Mx0.32mmx 0.50µm Signal #2 Info : 30M x 0.32mm x 0.25µm

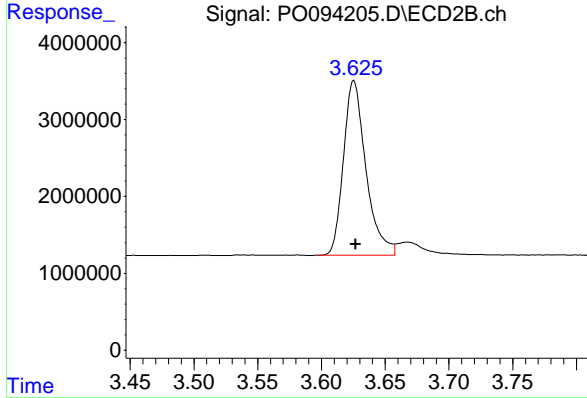




#1 Tetrachloro-m-xylene

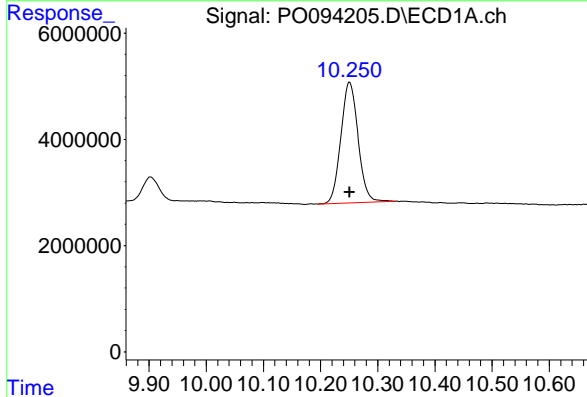
R.T.: 4.421 min
 Delta R.T.: 0.000 min
 Response: 75121410
 Conc: 20.10 ng/ml

Instrument :
 ECD_O
 ClientSampleId :
 IDW-SO-G2-041123MS



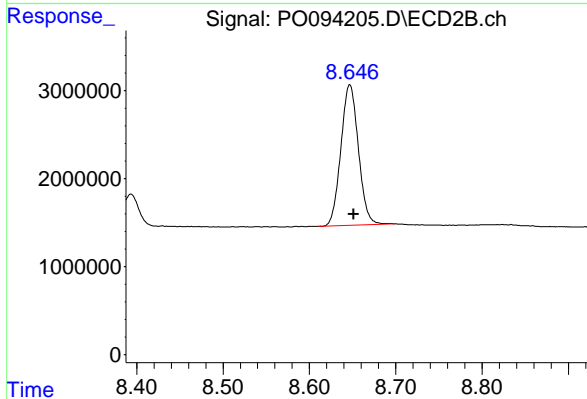
#1 Tetrachloro-m-xylene

R.T.: 3.625 min
 Delta R.T.: -0.001 min
 Response: 27923926
 Conc: 21.93 ng/ml



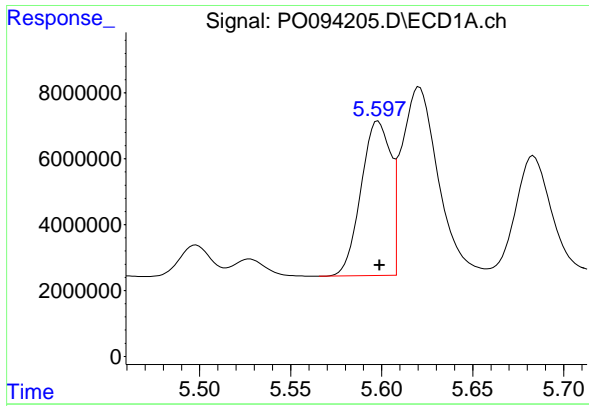
#2 Decachlorobiphenyl

R.T.: 10.251 min
 Delta R.T.: 0.000 min
 Response: 47532988
 Conc: 21.25 ng/ml



#2 Decachlorobiphenyl

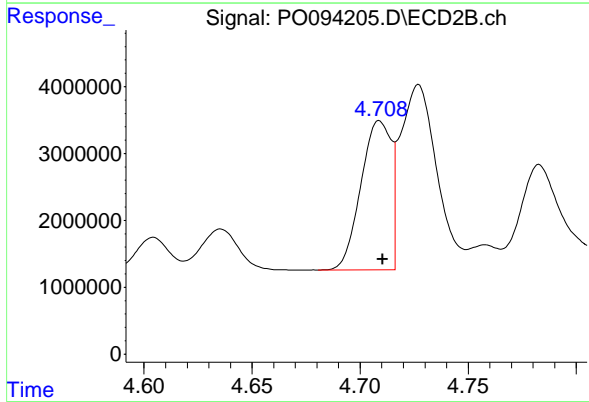
R.T.: 8.647 min
 Delta R.T.: -0.005 min
 Response: 22540091
 Conc: 22.54 ng/ml



#3 AR-1016-1

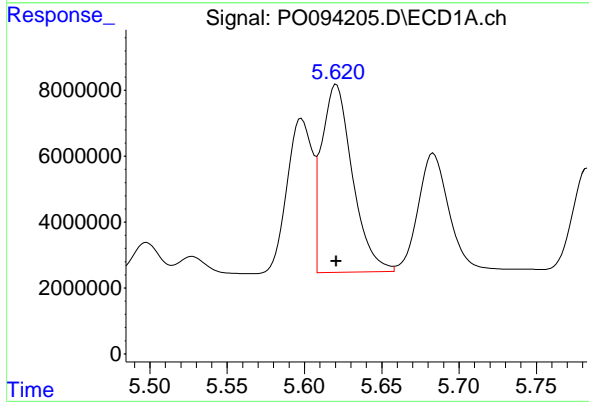
R.T.: 5.598 min
 Delta R.T.: 0.000 min
 Response: 53066199
 Conc: 518.92 ng/ml

Instrument :
 ECD_O
 ClientSampleId :
 IDW-SO-G2-041123MS



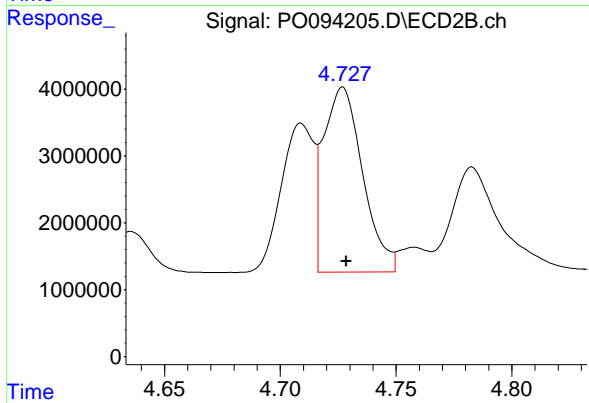
#3 AR-1016-1

R.T.: 4.709 min
 Delta R.T.: -0.002 min
 Response: 21694064
 Conc: 611.40 ng/ml



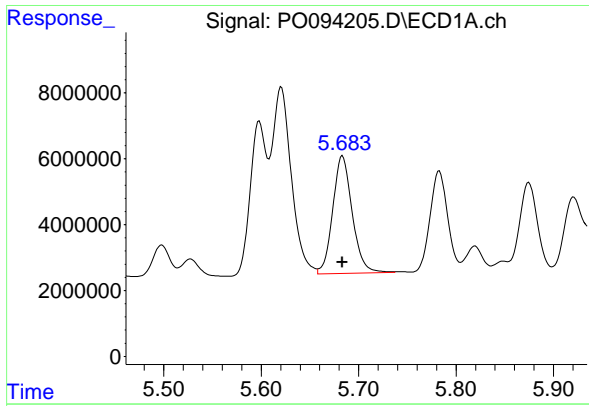
#4 AR-1016-2

R.T.: 5.621 min
 Delta R.T.: 0.000 min
 Response: 79381409
 Conc: 509.32 ng/ml



#4 AR-1016-2

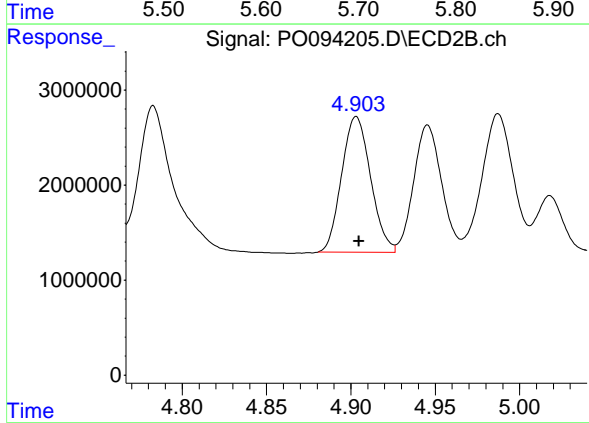
R.T.: 4.727 min
 Delta R.T.: -0.002 min
 Response: 32444415
 Conc: 600.70 ng/ml



#5 AR-1016-3

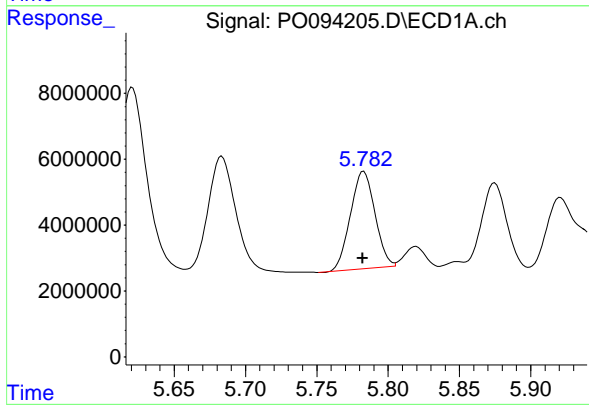
R.T.: 5.683 min
 Delta R.T.: 0.000 min
 Response: 49635292
 Conc: 503.24 ng/ml

Instrument :
 ECD_O
 ClientSampleId :
 IDW-SO-G2-041123MS



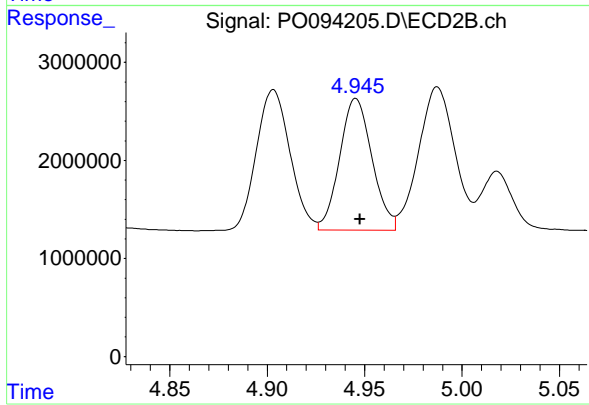
#5 AR-1016-3

R.T.: 4.903 min
 Delta R.T.: -0.002 min
 Response: 17116710
 Conc: 603.90 ng/ml



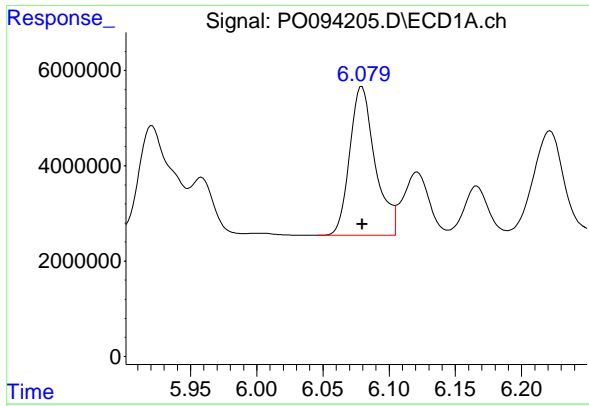
#6 AR-1016-4

R.T.: 5.783 min
 Delta R.T.: 0.000 min
 Response: 35306000
 Conc: 480.17 ng/ml



#6 AR-1016-4

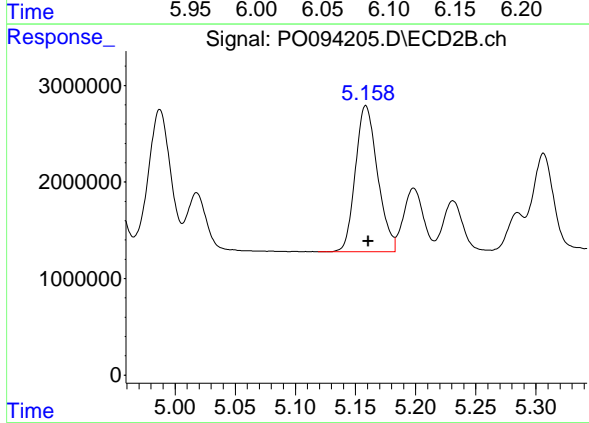
R.T.: 4.946 min
 Delta R.T.: -0.002 min
 Response: 15530322
 Conc: 588.14 ng/ml



#7 AR-1016-5

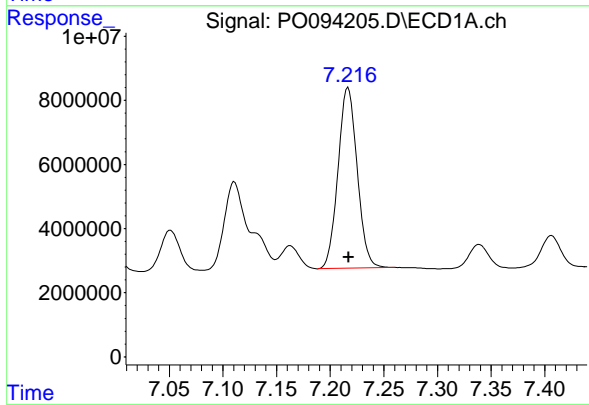
R.T.: 6.079 min
 Delta R.T.: 0.000 min
 Response: 41684976
 Conc: 492.37 ng/ml

Instrument :
 ECD_O
 ClientSampleId :
 IDW-SO-G2-041123MS



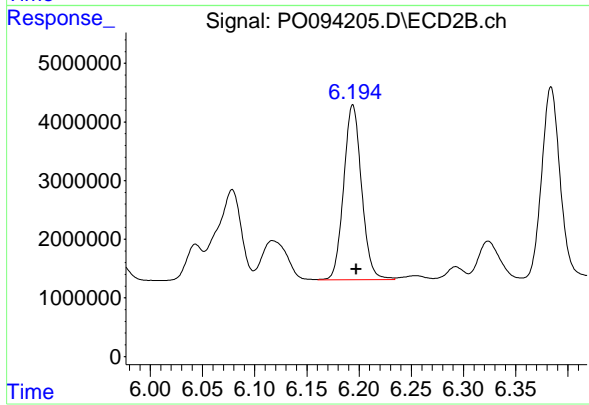
#7 AR-1016-5

R.T.: 5.159 min
 Delta R.T.: -0.002 min
 Response: 19423285
 Conc: 593.59 ng/ml



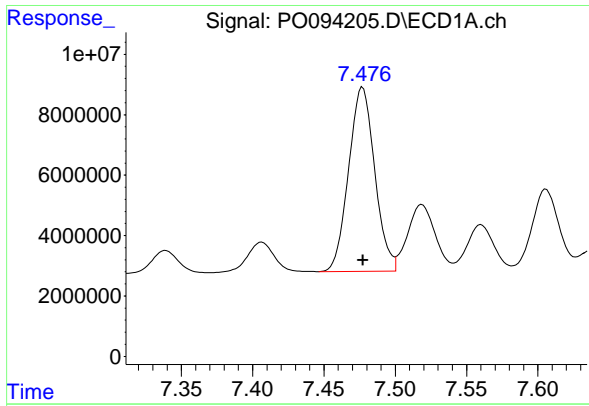
#31 AR-1260-1

R.T.: 7.217 min
 Delta R.T.: 0.000 min
 Response: 70159310
 Conc: 480.65 ng/ml



#31 AR-1260-1

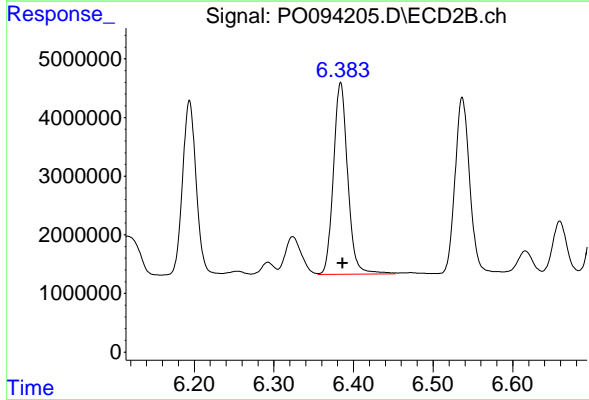
R.T.: 6.194 min
 Delta R.T.: -0.003 min
 Response: 35468464
 Conc: 543.90 ng/ml



#32 AR-1260-2

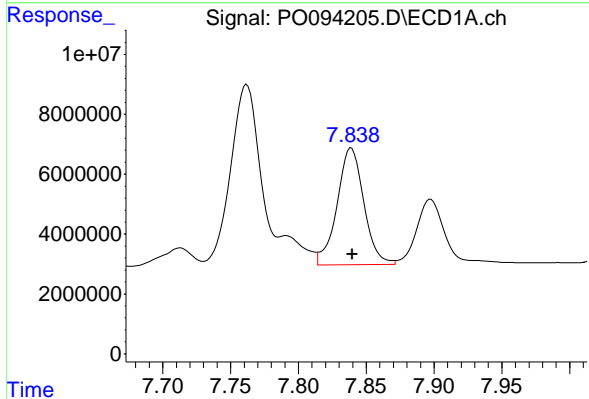
R.T.: 7.477 min
 Delta R.T.: 0.000 min
 Response: 77642865
 Conc: 485.10 ng/ml

Instrument :
 ECD_O
 ClientSampleId :
 IDW-SO-G2-041123MS



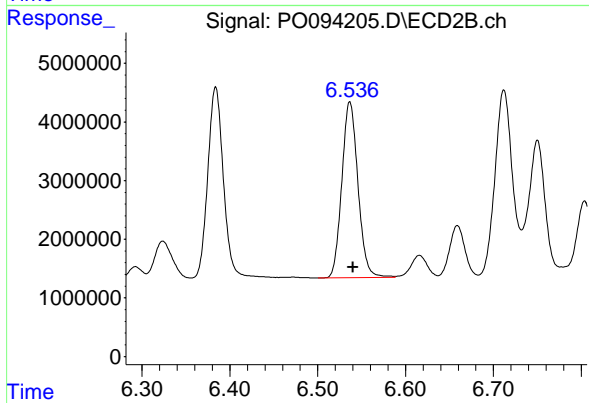
#32 AR-1260-2

R.T.: 6.384 min
 Delta R.T.: -0.003 min
 Response: 40717023
 Conc: 560.66 ng/ml



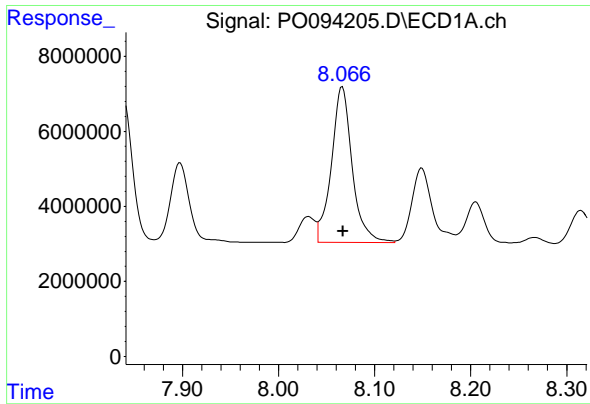
#33 AR-1260-3

R.T.: 7.839 min
 Delta R.T.: 0.000 min
 Response: 53616924
 Conc: 403.81 ng/ml



#33 AR-1260-3

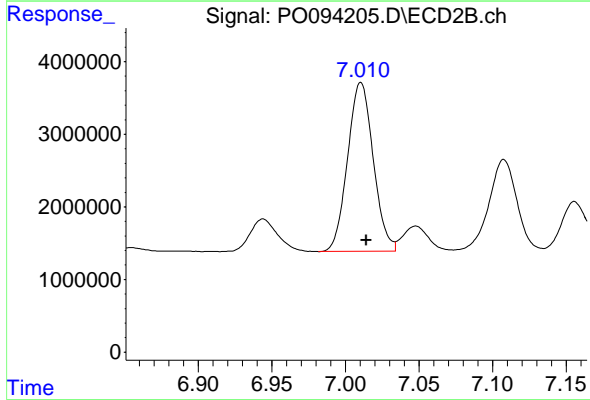
R.T.: 6.537 min
 Delta R.T.: -0.004 min
 Response: 38274254
 Conc: 527.39 ng/ml



#34 AR-1260-4

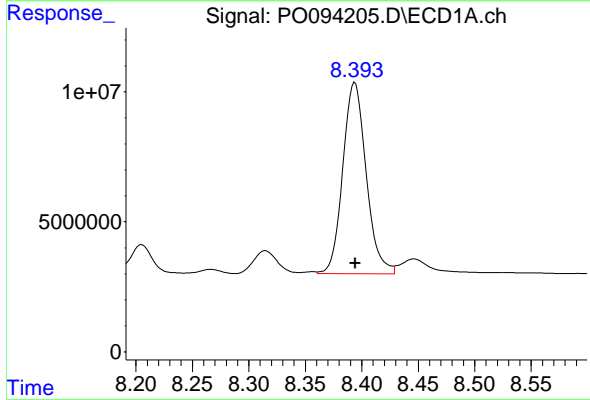
R.T.: 8.066 min
 Delta R.T.: 0.000 min
 Response: 62119038
 Conc: 450.98 ng/ml

Instrument :
 ECD_O
 ClientSampleId :
 IDW-SO-G2-041123MS



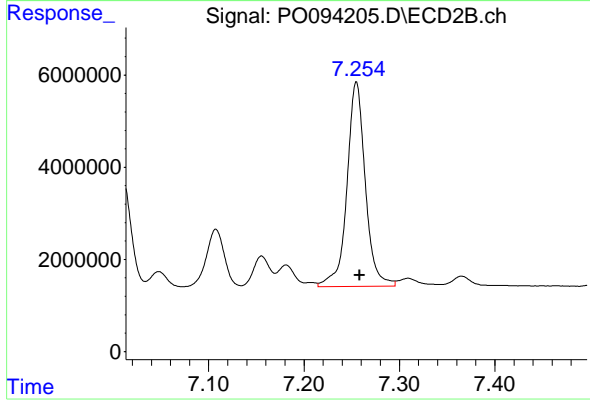
#34 AR-1260-4

R.T.: 7.010 min
 Delta R.T.: -0.004 min
 Response: 28224307
 Conc: 508.25 ng/ml



#35 AR-1260-5

R.T.: 8.394 min
 Delta R.T.: 0.000 min
 Response: 106222875
 Conc: 487.73 ng/ml



#35 AR-1260-5

R.T.: 7.255 min
 Delta R.T.: -0.003 min
 Response: 59446516
 Conc: 572.85 ng/ml