

Data Path : Z:\pestpcbsrv\HPCHEM1\ECD\_O\Data\P0041423\  
 Data File : P0094237.D  
 Signal(s) : Signal #1: ECD1A.ch Signal #2: ECD2B.ch  
 Acq On : 14 Apr 2023 13:23  
 Operator : YP/AJ  
 Sample : 02341-01MS  
 Misc :  
 ALS Vial : 11 Sample Multiplier: 1

Instrument :  
 ECD\_O  
 ClientSampleId :

Integration File signal 1: autoint1.e  
 Integration File signal 2: autoint2.e  
 Quant Time: Apr 14 22:27:44 2023  
 Quant Method : Z:\pestpcbsrv\HPCHEM1\ECD\_O\methods\P0040323.M  
 Quant Title : GC EXTRACTABLES  
 QLast Update : Tue Apr 04 06:20:55 2023  
 Response via : Initial Calibration  
 Integrator: ChemStation

Volume Inj. : 2 µl  
 Signal #1 Phase : ZB-MR1 Signal #2 Phase: ZB-MR2  
 Signal #1 Info : 30Mx0.32mmx 0.50µ Signal #2 Info : 30M x 0.32mm x 0.25µm

Compound	RT#1	RT#2	Resp#1	Resp#2	ng/ml	ng/ml
System Monitoring Compounds						
1) SA Tetrachlo...	4.417	3.622	80716426	27514839	21.592	21.607
2) SA Decachlor...	10.243	8.640	54988255	23417319	24.582	23.422
Target Compounds						
3) L1 AR-1016-1	5.595	4.705	59670630	22344421	583.498	629.729
4) L1 AR-1016-2	5.617	4.722	90074537	33883871	577.926	627.350
5) L1 AR-1016-3	5.679	4.898	55311532	15758866	560.785	555.997
6) L1 AR-1016-4	5.778	4.941	43113195	14549965	586.345	551.016
7) L1 AR-1016-5	6.076	5.154	46859890	20278822	553.490	619.741
8) L2 AR-1221-1	4.625	3.833	13349054	2418316	289.443	154.438 #
9) L2 AR-1221-2	4.714	3.920	8839525	4912939	257.513	416.265 #
10) L2 AR-1221-3	4.791	3.996	37390368	14274633	356.998	387.500
11) L3 AR-1232-1	4.791	3.996	37390368	14274633	428.411	456.925
12) L3 AR-1232-2	5.324	4.722	50949676	33883871	1191.384	1279.912
13) L3 AR-1232-3	5.617	4.898	90074537	15758866	1226.236	1194.836
14) L3 AR-1232-4	5.778	4.983	43113195	18507089	1252.482	1302.308
15) L3 AR-1232-5	5.870	5.154	40553048	20278822	1276.764	1312.670
16) L4 AR-1242-1	5.595	4.705	59670630	22344421	683.635	726.114
17) L4 AR-1242-2	5.617	4.722	90074537	33883871	677.429	736.701
18) L4 AR-1242-3	5.679	4.898	55311532	15758866	651.586	650.273
19) L4 AR-1242-4	5.778	4.983	43113195	18507089	690.020	659.233
20) L4 AR-1242-5	6.523	5.507	6648748	16101111	98.748	564.735 #
21) L5 AR-1248-1	5.595	4.705	59670630	22344421	886.872	936.812
22) L5 AR-1248-2	5.870	4.941	40553048	14549965	370.731	365.273
23) L5 AR-1248-3	6.076	4.983	46859890	18507089	388.169	443.400
24) L5 AR-1248-4	6.457	5.154	42845407	20278822	398.943	431.243
25) L5 AR-1248-5	6.523	5.546	6648748	2211249	57.305	59.229
26) L6 AR-1254-1	6.457	5.507	42845407	16101111	315.906	235.556 #
27) L6 AR-1254-2	6.677	5.655	37541836	15303789	192.056	251.272 #
28) L6 AR-1254-3	7.047	6.074	18727388	27005978	101.370	296.482 #
29) L6 AR-1254-4	7.335	6.288	10559179	2454077	104.121	57.614 #
30) L6 AR-1254-5	7.757	6.707	105.7E6	47997012	779.834	665.209
31) L7 AR-1260-1	7.213	6.189	78074360	37627432	534.877	577.008
32) L7 AR-1260-2	7.472	6.379	92300167	43518239	576.681	599.227
33) L7 AR-1260-3	7.836	6.532	62215473	41085319	468.568	566.122
34) L7 AR-1260-4	8.063	7.006	73338402	29995272	532.428	540.136
35) L7 AR-1260-5	8.389	7.250	127.1E6	63854244	583.581	615.322
36) L8 AR-1262-1	7.836	6.799	62215473	17561073	364.212	501.916 #
37) L8 AR-1262-2	8.389	7.006	127.1E6	29995272	546.771	424.543
38) L8 AR-1262-3	8.720	7.534	81403020	13780088	496.948	275.419 #
39) L8 AR-1262-4	8.781	7.597	50423078	46678375	503.256	562.855
40) L8 AR-1262-5	9.471	8.096	30313242	13002020	376.627	399.685
41) L9 AR-1268-1	8.720	7.534	81403020	13780088	241.870	90.207 #

Data Path : Z:\pestpcbsrv\HPCHEM1\ECD\_0\Data\P0041423\  
 Data File : P0094237.D  
 Signal(s) : Signal #1: ECD1A.ch Signal #2: ECD2B.ch  
 Acq On : 14 Apr 2023 13:23  
 Operator : YP/AJ  
 Sample : 02341-01MS  
 Misc :  
 ALS Vial : 11 Sample Multiplier: 1

Instrument :  
 ECD\_0  
 ClientSampleId :

Integration File signal 1: autoint1.e  
 Integration File signal 2: autoint2.e  
 Quant Time: Apr 14 22:27:44 2023  
 Quant Method : Z:\pestpcbsrv\HPCHEM1\ECD\_0\methods\P0040323.M  
 Quant Title : GC EXTRACTABLES  
 QLast Update : Tue Apr 04 06:20:55 2023  
 Response via : Initial Calibration  
 Integrator: ChemStation

Volume Inj. : 2 µl  
 Signal #1 Phase : ZB-MR1 Signal #2 Phase: ZB-MR2  
 Signal #1 Info : 30Mx0.32mmx 0.50µ Signal #2 Info : 30M x 0.32mm x 0.25µm

	Compound	RT#1	RT#2	Resp#1	Resp#2	ng/ml	ng/ml
42)	L9 AR-1268-2	8.781	7.597	50423078	46678375	156.674	343.572 #
43)	L9 AR-1268-3	9.035	7.805	2234050	1073784	7.878	8.204
44)	L9 AR-1268-4	9.471	8.096	30313242	13002020	313.516	328.466
45)	L9 AR-1268-5	9.895	8.387	11258109	4971404	13.405	14.184

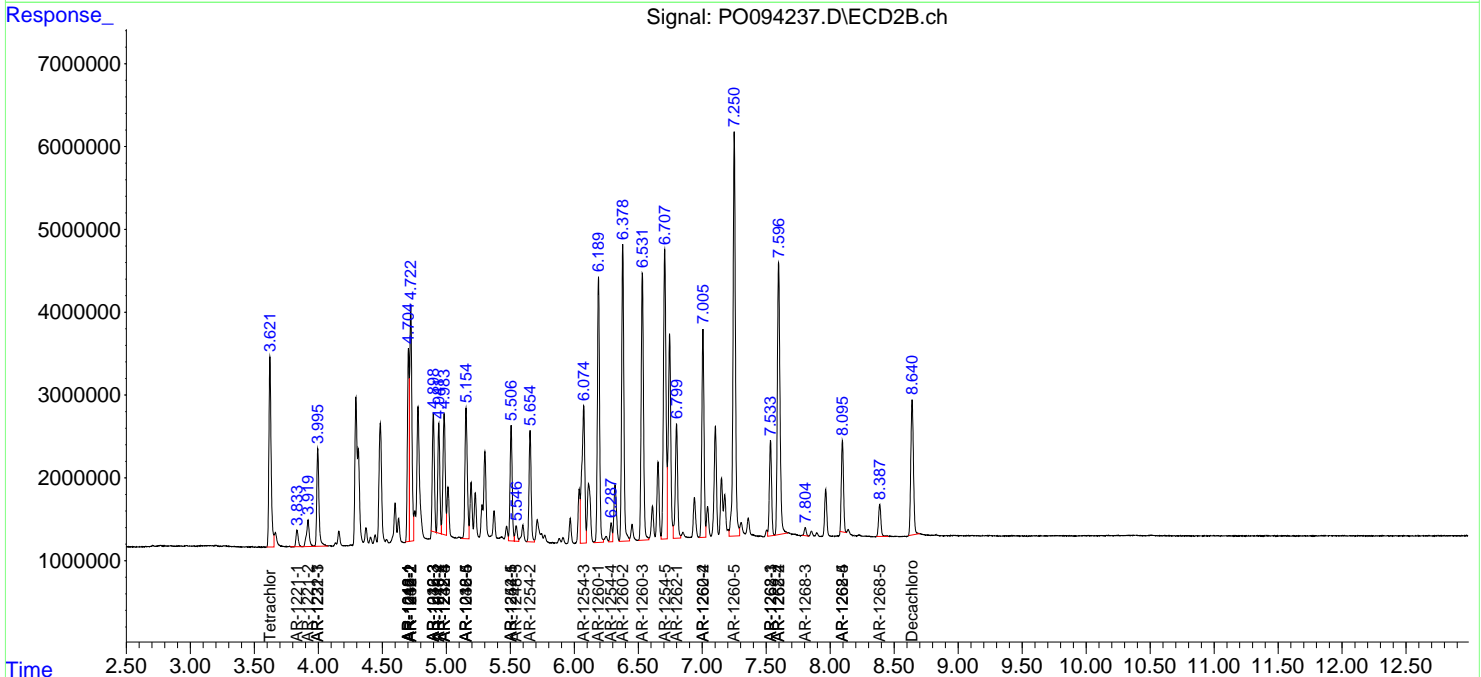
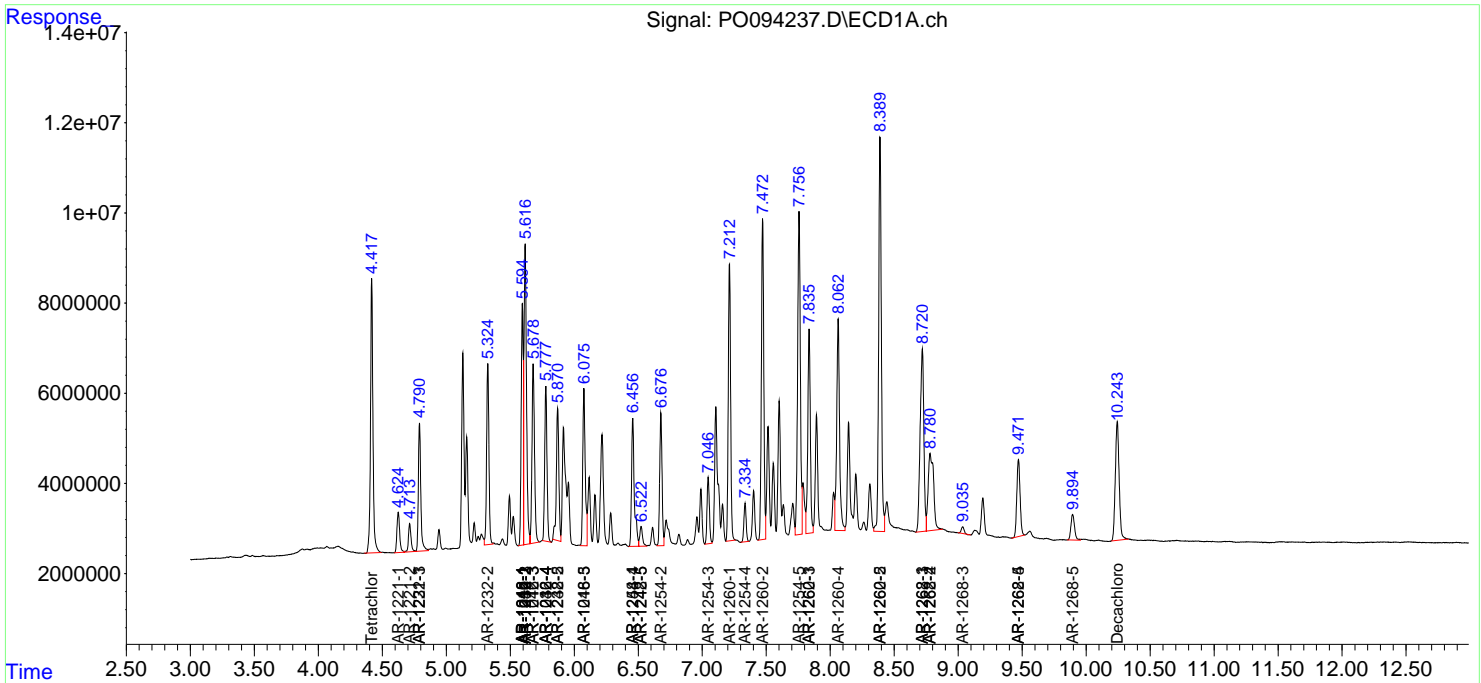
(f)=RT Delta > 1/2 Window (#)=Amounts differ by > 25% (m)=manual int.

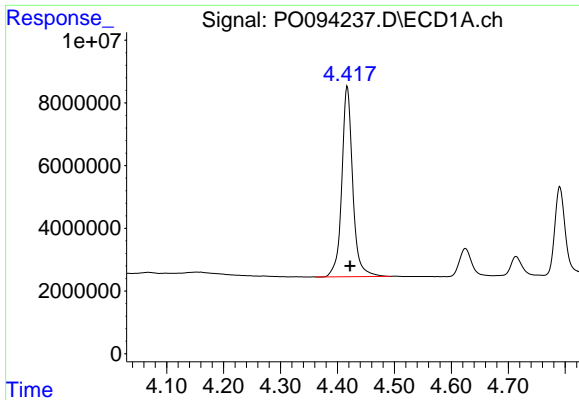
Data Path : Z:\pestpcbsrv\HPCHEM1\ECD\_O\Data\PO041423\  
 Data File : PO094237.D  
 Signal(s) : Signal #1: ECD1A.ch Signal #2: ECD2B.ch  
 Acq On : 14 Apr 2023 13:23  
 Operator : YP/AJ  
 Sample : 02341-01MS  
 Misc :  
 ALS Vial : 11 Sample Multiplier: 1

Instrument :  
 ECD\_O  
 ClientSampleId :

Integration File signal 1: autoint1.e  
 Integration File signal 2: autoint2.e  
 Quant Time: Apr 14 22:27:44 2023  
 Quant Method : Z:\pestpcbsrv\HPCHEM1\ECD\_O\methods\PO040323.M  
 Quant Title : GC EXTRACTABLES  
 QLast Update : Tue Apr 04 06:20:55 2023  
 Response via : Initial Calibration  
 Integrator: ChemStation

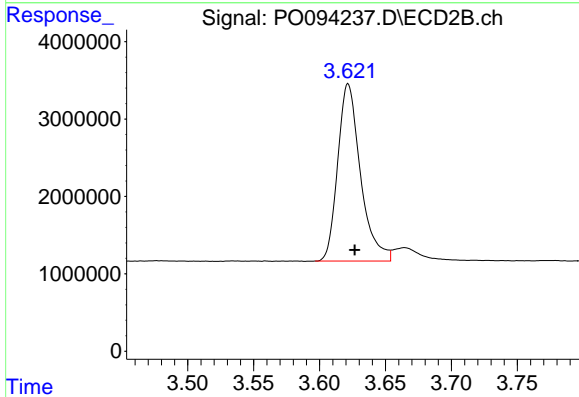
Volume Inj. : 2 µl  
 Signal #1 Phase : ZB-MR1 Signal #2 Phase: ZB-MR2  
 Signal #1 Info : 30Mx0.32mmx 0.50µ Signal #2 Info : 30M x 0.32mm x 0.25µm



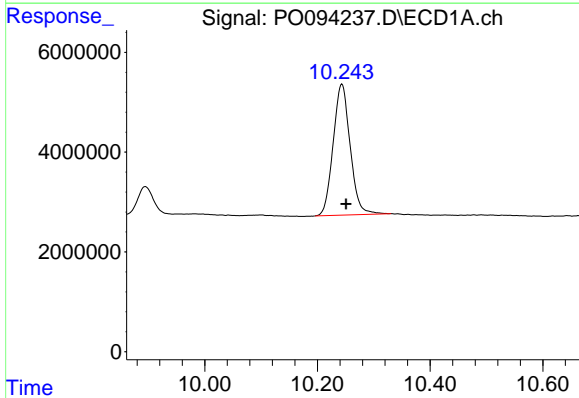


#1 Tetrachloro-m-xylene  
 R.T.: 4.417 min  
 Delta R.T.: -0.005 min  
 Response: 80716426  
 Conc: 21.59 ng/ml

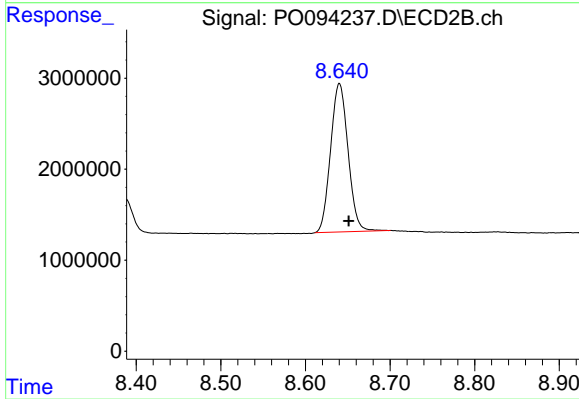
Instrument :  
 ECD\_O  
 ClientSampleId :



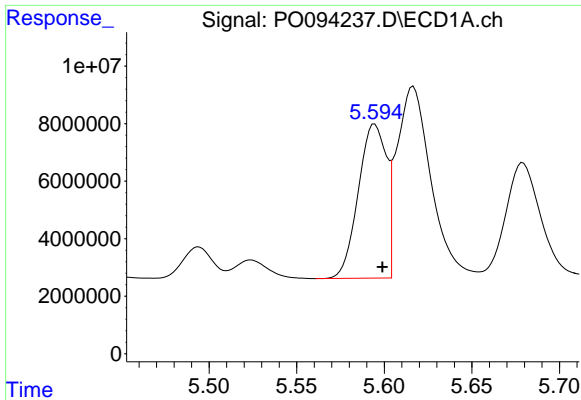
#1 Tetrachloro-m-xylene  
 R.T.: 3.622 min  
 Delta R.T.: -0.005 min  
 Response: 27514839  
 Conc: 21.61 ng/ml



#2 Decachlorobiphenyl  
 R.T.: 10.243 min  
 Delta R.T.: -0.007 min  
 Response: 54988255  
 Conc: 24.58 ng/ml



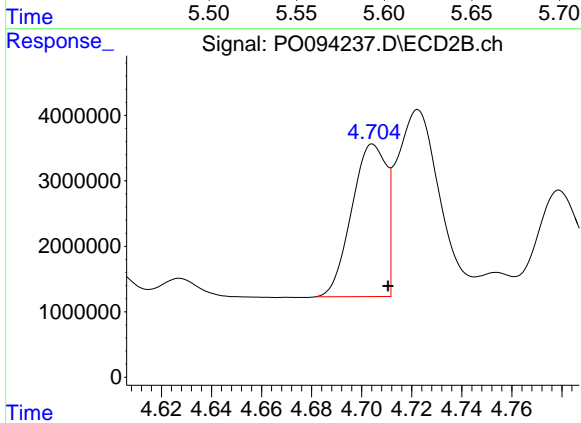
#2 Decachlorobiphenyl  
 R.T.: 8.640 min  
 Delta R.T.: -0.011 min  
 Response: 23417319  
 Conc: 23.42 ng/ml



#3 AR-1016-1

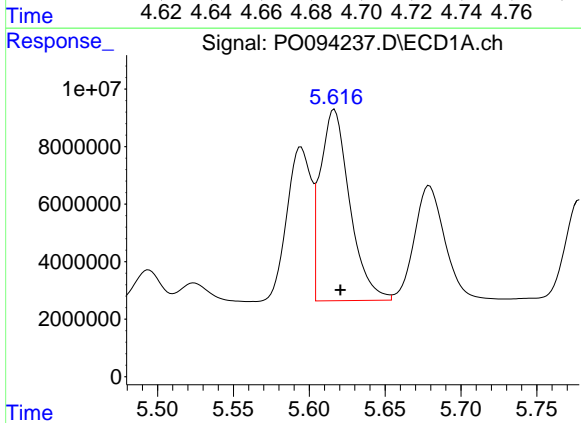
R.T.: 5.595 min  
 Delta R.T.: -0.004 min  
 Response: 59670630  
 Conc: 583.50 ng/ml

Instrument :  
 ECD\_O  
 ClientSampleId :



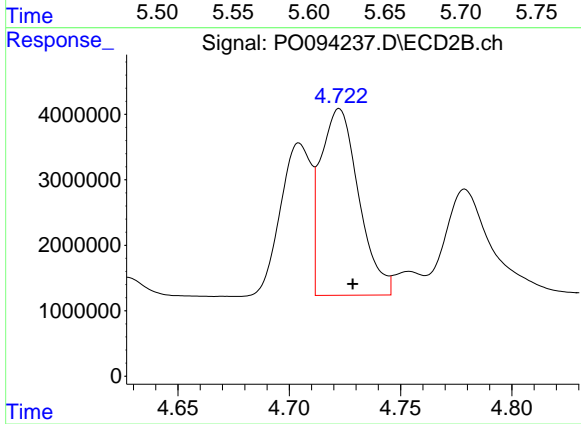
#3 AR-1016-1

R.T.: 4.705 min  
 Delta R.T.: -0.006 min  
 Response: 22344421  
 Conc: 629.73 ng/ml



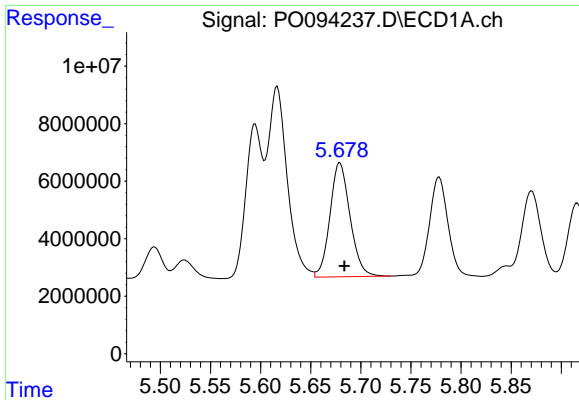
#4 AR-1016-2

R.T.: 5.617 min  
 Delta R.T.: -0.004 min  
 Response: 90074537  
 Conc: 577.93 ng/ml



#4 AR-1016-2

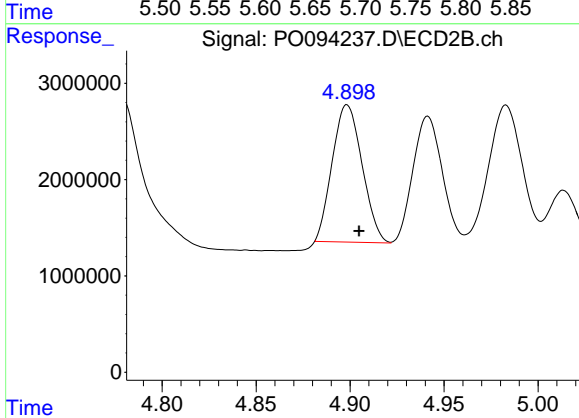
R.T.: 4.722 min  
 Delta R.T.: -0.006 min  
 Response: 33883871  
 Conc: 627.35 ng/ml



#5 AR-1016-3

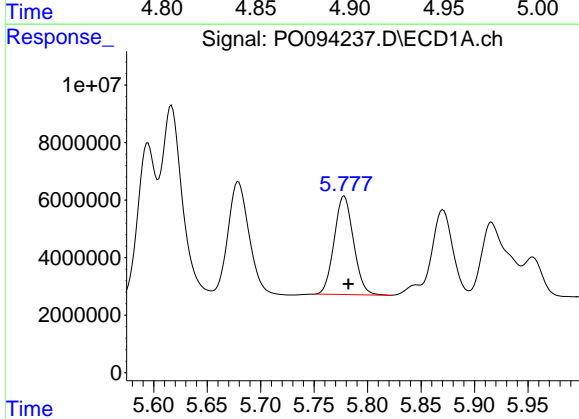
R.T.: 5.679 min  
 Delta R.T.: -0.004 min  
 Response: 55311532  
 Conc: 560.79 ng/ml

Instrument :  
 ECD\_O  
 ClientSampleId :



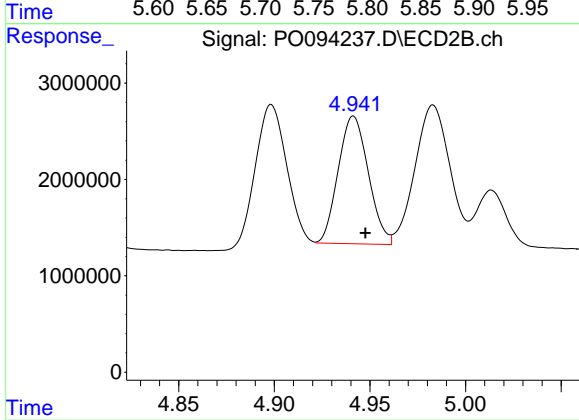
#5 AR-1016-3

R.T.: 4.898 min  
 Delta R.T.: -0.006 min  
 Response: 15758866  
 Conc: 556.00 ng/ml



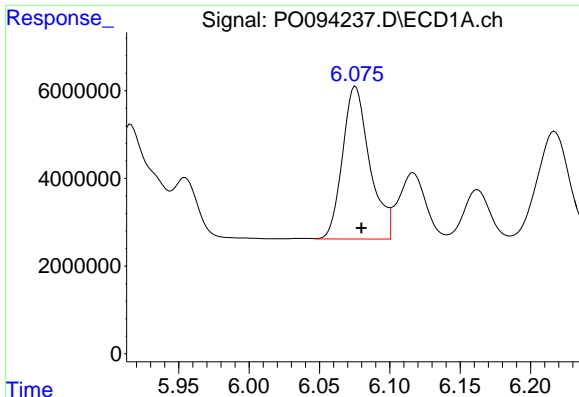
#6 AR-1016-4

R.T.: 5.778 min  
 Delta R.T.: -0.004 min  
 Response: 43113195  
 Conc: 586.35 ng/ml



#6 AR-1016-4

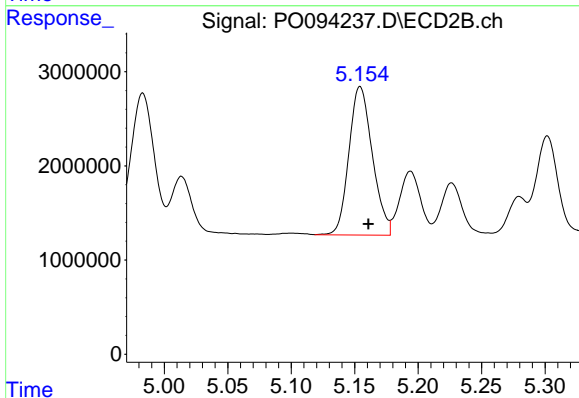
R.T.: 4.941 min  
 Delta R.T.: -0.006 min  
 Response: 14549965  
 Conc: 551.02 ng/ml



#7 AR-1016-5

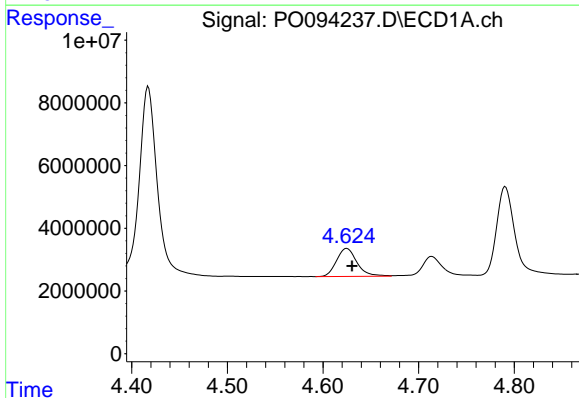
R.T.: 6.076 min  
 Delta R.T.: -0.004 min  
 Response: 46859890  
 Conc: 553.49 ng/ml

Instrument :  
 ECD\_O  
 ClientSampleId :



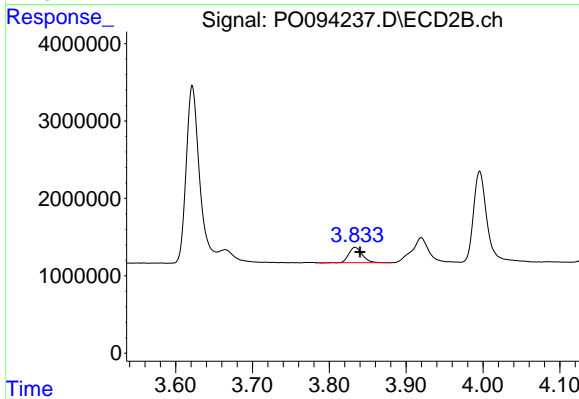
#7 AR-1016-5

R.T.: 5.154 min  
 Delta R.T.: -0.006 min  
 Response: 20278822  
 Conc: 619.74 ng/ml



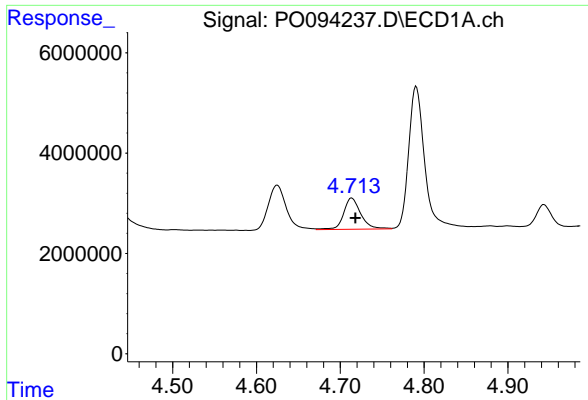
#8 AR-1221-1

R.T.: 4.625 min  
 Delta R.T.: -0.006 min  
 Response: 13349054  
 Conc: 289.44 ng/ml



#8 AR-1221-1

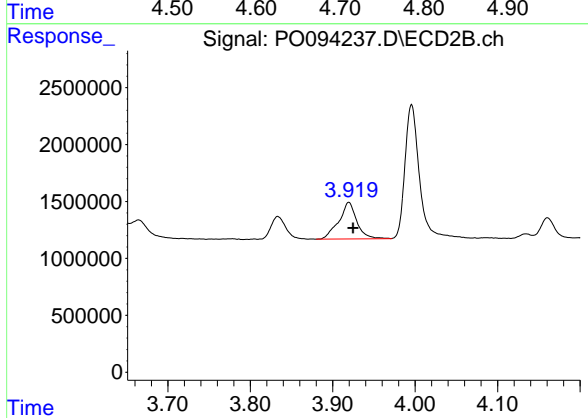
R.T.: 3.833 min  
 Delta R.T.: -0.006 min  
 Response: 2418316  
 Conc: 154.44 ng/ml



#9 AR-1221-2

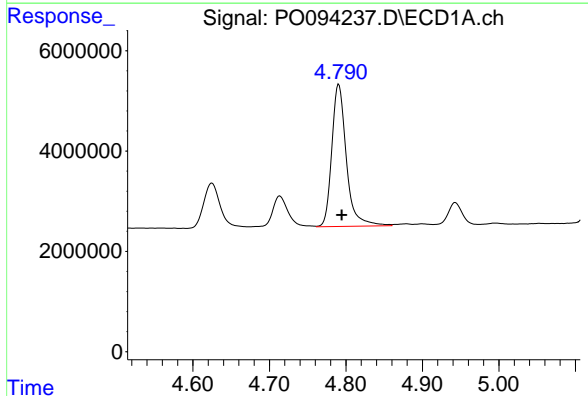
R.T.: 4.714 min  
Delta R.T.: -0.004 min  
Response: 8839525  
Conc: 257.51 ng/ml

Instrument :  
ECD\_O  
ClientSampleId :



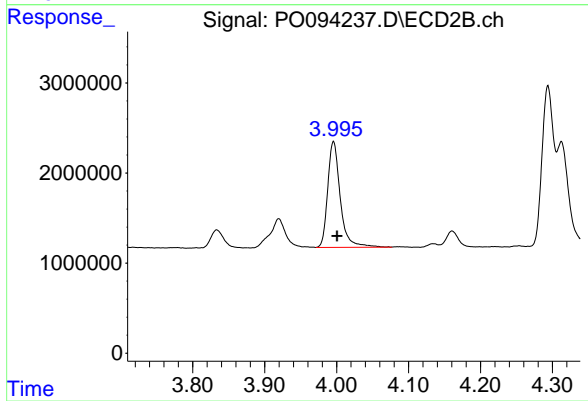
#9 AR-1221-2

R.T.: 3.920 min  
Delta R.T.: -0.005 min  
Response: 4912939  
Conc: 416.26 ng/ml



#10 AR-1221-3

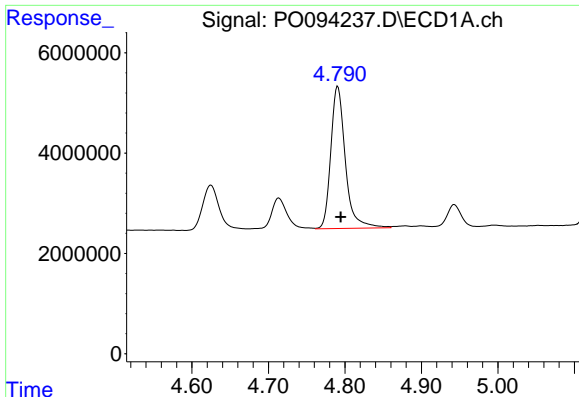
R.T.: 4.791 min  
Delta R.T.: -0.004 min  
Response: 37390368  
Conc: 357.00 ng/ml



#10 AR-1221-3

R.T.: 3.996 min  
Delta R.T.: -0.005 min  
Response: 14274633  
Conc: 387.50 ng/ml

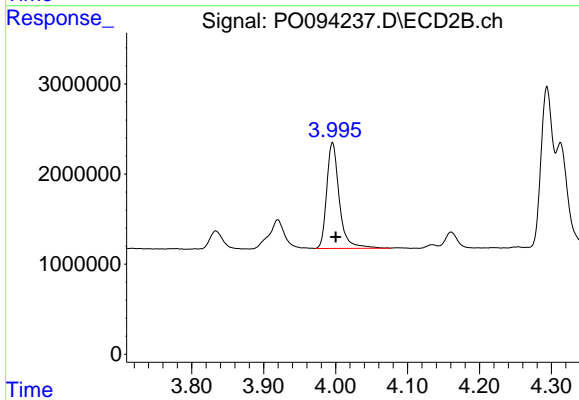




#11 AR-1232-1

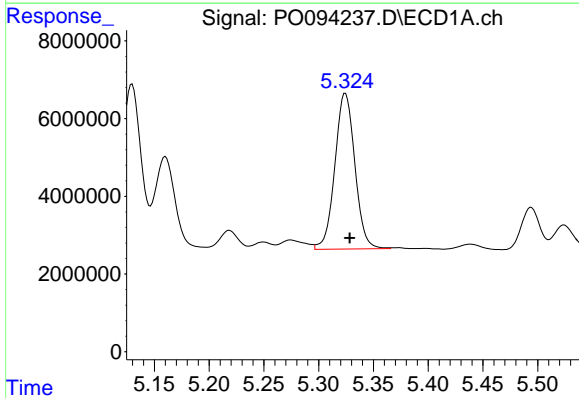
R.T.: 4.791 min  
 Delta R.T.: -0.004 min  
 Response: 37390368  
 Conc: 428.41 ng/ml

Instrument :  
 ECD\_O  
 ClientSampleId :



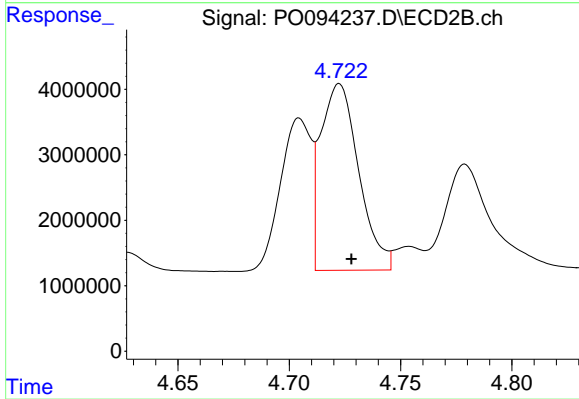
#11 AR-1232-1

R.T.: 3.996 min  
 Delta R.T.: -0.005 min  
 Response: 14274633  
 Conc: 456.92 ng/ml



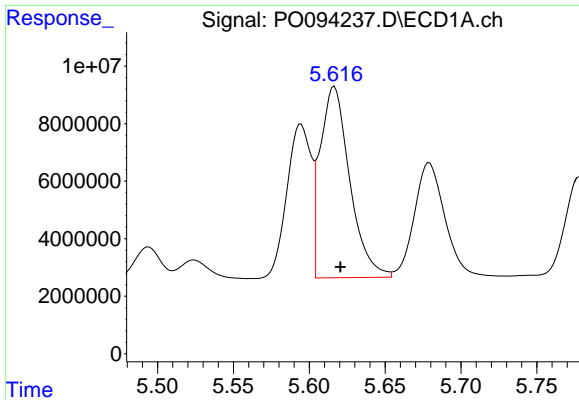
#12 AR-1232-2

R.T.: 5.324 min  
 Delta R.T.: -0.004 min  
 Response: 50949676  
 Conc: 1191.38 ng/ml



#12 AR-1232-2

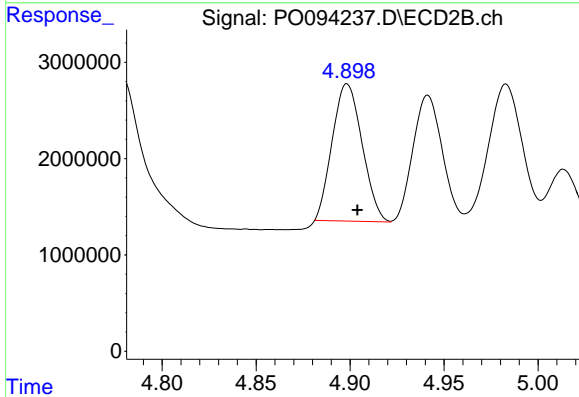
R.T.: 4.722 min  
 Delta R.T.: -0.005 min  
 Response: 33883871  
 Conc: 1279.91 ng/ml



#13 AR-1232-3

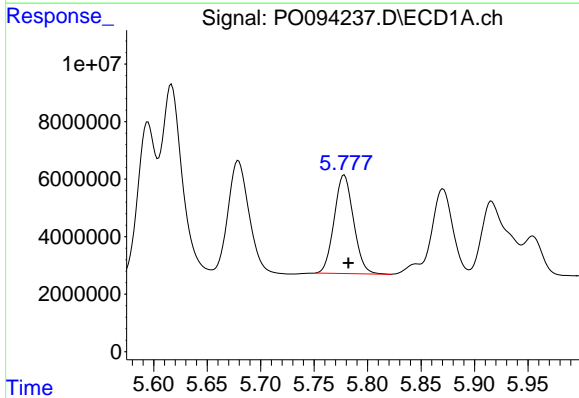
R.T.: 5.617 min  
 Delta R.T.: -0.004 min  
 Response: 90074537  
 Conc: 1226.24 ng/ml

Instrument :  
 ECD\_O  
 ClientSampleId :



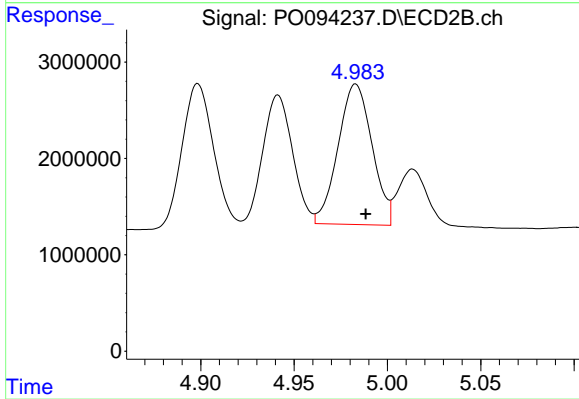
#13 AR-1232-3

R.T.: 4.898 min  
 Delta R.T.: -0.006 min  
 Response: 15758866  
 Conc: 1194.84 ng/ml



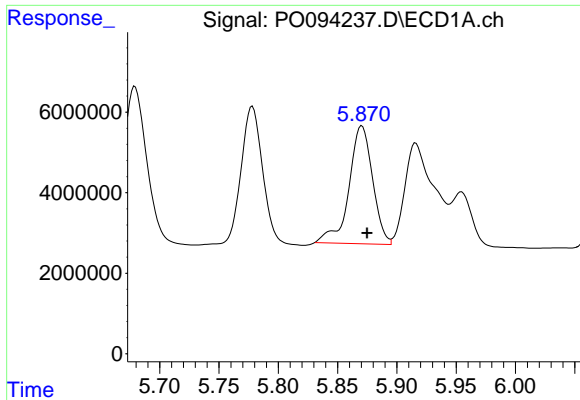
#14 AR-1232-4

R.T.: 5.778 min  
 Delta R.T.: -0.004 min  
 Response: 43113195  
 Conc: 1252.48 ng/ml



#14 AR-1232-4

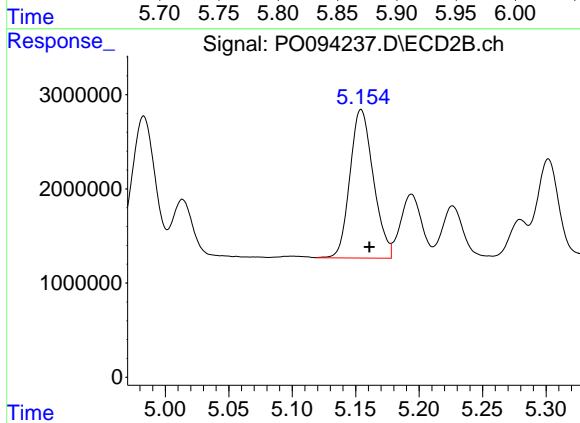
R.T.: 4.983 min  
 Delta R.T.: -0.005 min  
 Response: 18507089  
 Conc: 1302.31 ng/ml



#15 AR-1232-5

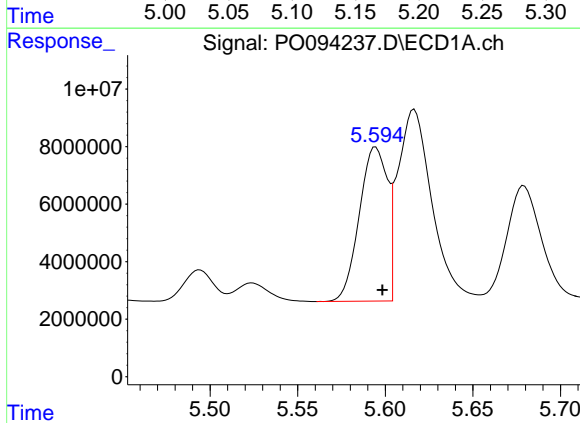
R.T.: 5.870 min  
 Delta R.T.: -0.004 min  
 Response: 40553048  
 Conc: 1276.76 ng/ml

Instrument :  
 ECD\_O  
 ClientSampleId :



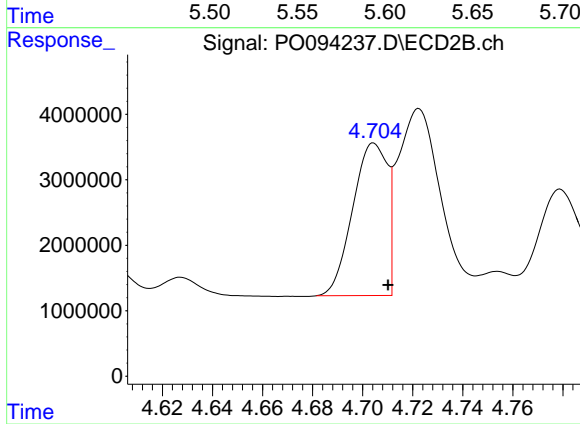
#15 AR-1232-5

R.T.: 5.154 min  
 Delta R.T.: -0.006 min  
 Response: 20278822  
 Conc: 1312.67 ng/ml



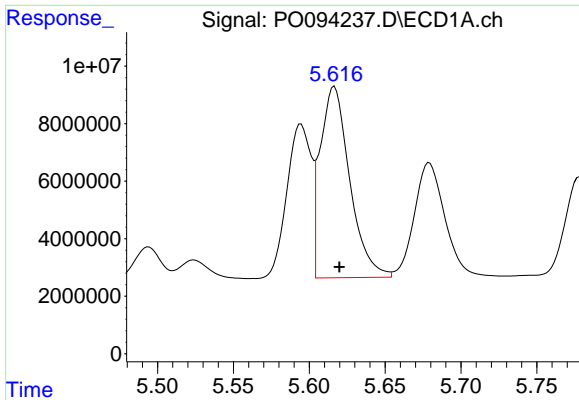
#16 AR-1242-1

R.T.: 5.595 min  
 Delta R.T.: -0.004 min  
 Response: 59670630  
 Conc: 683.64 ng/ml



#16 AR-1242-1

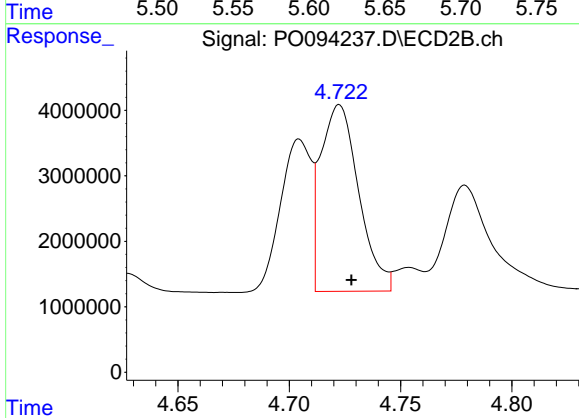
R.T.: 4.705 min  
 Delta R.T.: -0.006 min  
 Response: 22344421  
 Conc: 726.11 ng/ml



#17 AR-1242-2

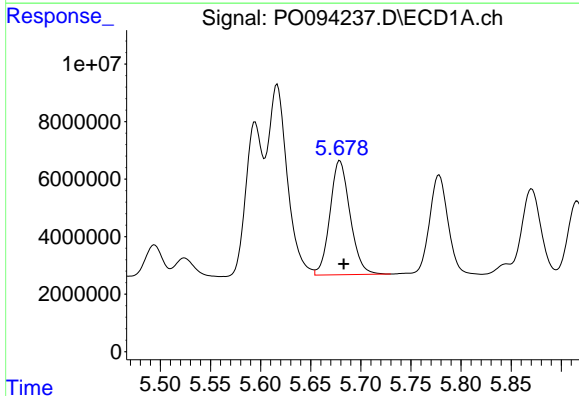
R.T.: 5.617 min  
 Delta R.T.: -0.003 min  
 Response: 90074537  
 Conc: 677.43 ng/ml

Instrument :  
 ECD\_O  
 ClientSampleId :



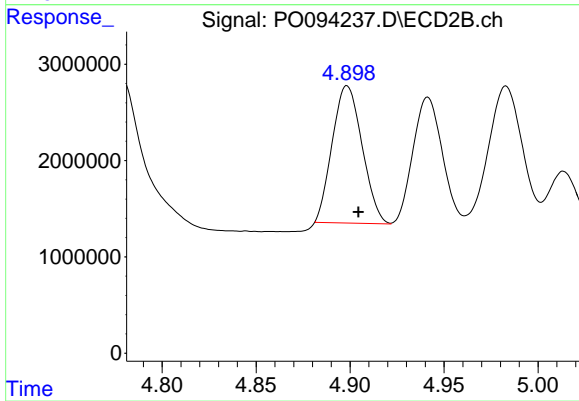
#17 AR-1242-2

R.T.: 4.722 min  
 Delta R.T.: -0.005 min  
 Response: 33883871  
 Conc: 736.70 ng/ml



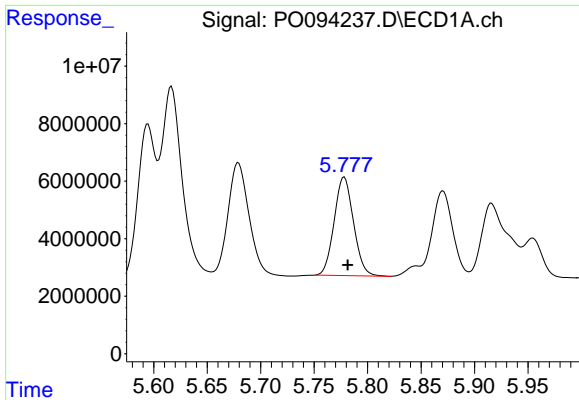
#18 AR-1242-3

R.T.: 5.679 min  
 Delta R.T.: -0.004 min  
 Response: 55311532  
 Conc: 651.59 ng/ml



#18 AR-1242-3

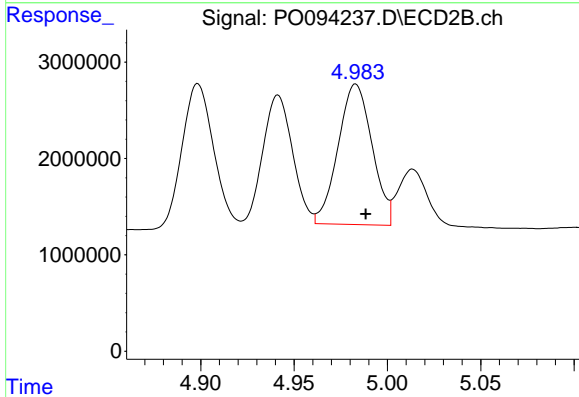
R.T.: 4.898 min  
 Delta R.T.: -0.006 min  
 Response: 15758866  
 Conc: 650.27 ng/ml



#19 AR-1242-4

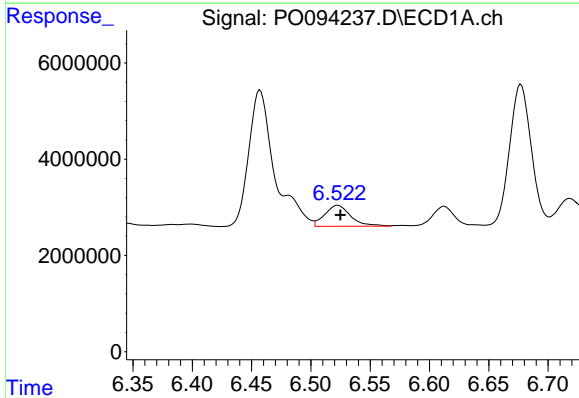
R.T.: 5.778 min  
 Delta R.T.: -0.003 min  
 Response: 43113195  
 Conc: 690.02 ng/ml

Instrument :  
 ECD\_O  
 ClientSampleId :



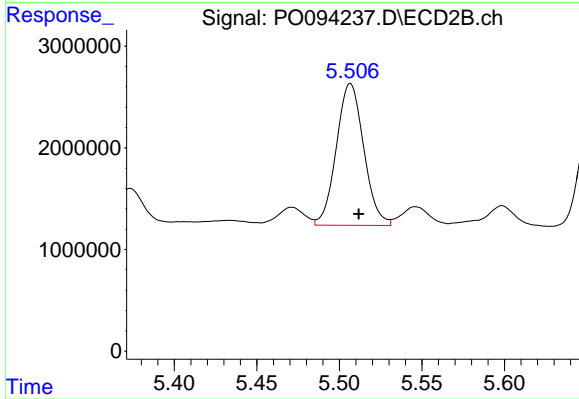
#19 AR-1242-4

R.T.: 4.983 min  
 Delta R.T.: -0.005 min  
 Response: 18507089  
 Conc: 659.23 ng/ml



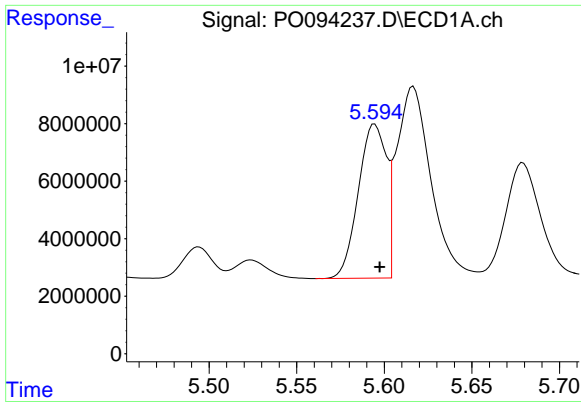
#20 AR-1242-5

R.T.: 6.523 min  
 Delta R.T.: -0.002 min  
 Response: 6648748  
 Conc: 98.75 ng/ml



#20 AR-1242-5

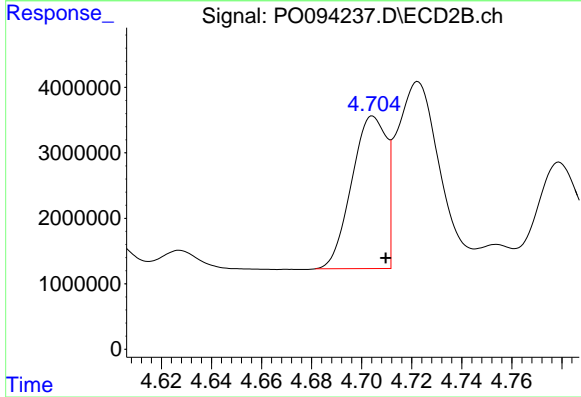
R.T.: 5.507 min  
 Delta R.T.: -0.005 min  
 Response: 16101111  
 Conc: 564.74 ng/ml



#21 AR-1248-1

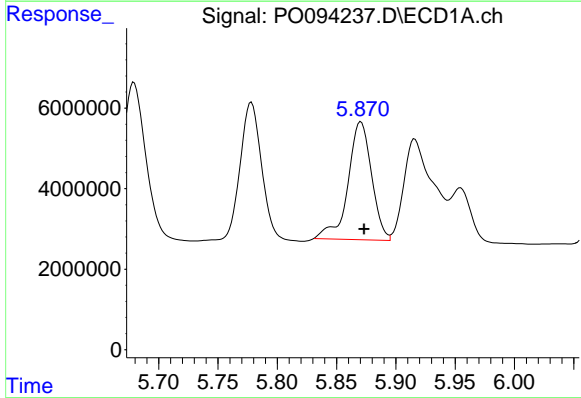
R.T.: 5.595 min  
 Delta R.T.: -0.003 min  
 Response: 59670630  
 Conc: 886.87 ng/ml

Instrument :  
 ECD\_O  
 ClientSampleId :



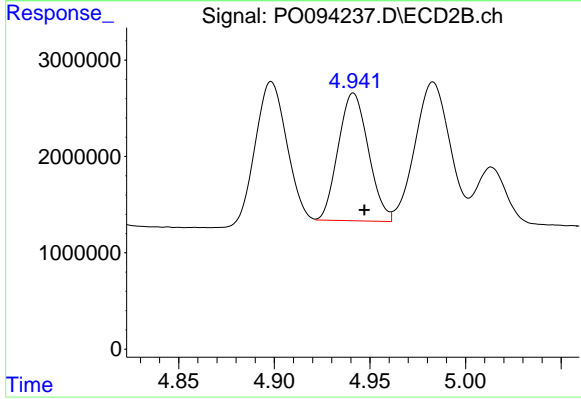
#21 AR-1248-1

R.T.: 4.705 min  
 Delta R.T.: -0.005 min  
 Response: 22344421  
 Conc: 936.81 ng/ml



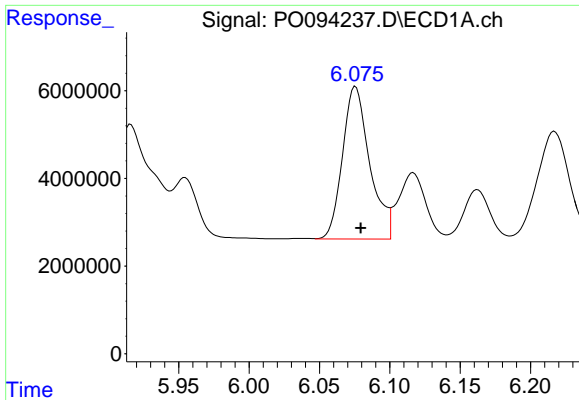
#22 AR-1248-2

R.T.: 5.870 min  
 Delta R.T.: -0.003 min  
 Response: 40553048  
 Conc: 370.73 ng/ml



#22 AR-1248-2

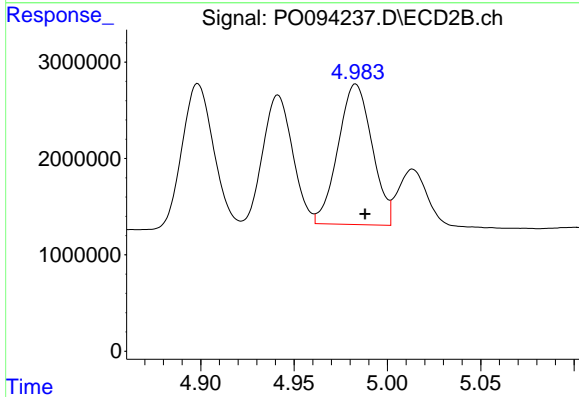
R.T.: 4.941 min  
 Delta R.T.: -0.006 min  
 Response: 14549965  
 Conc: 365.27 ng/ml



#23 AR-1248-3

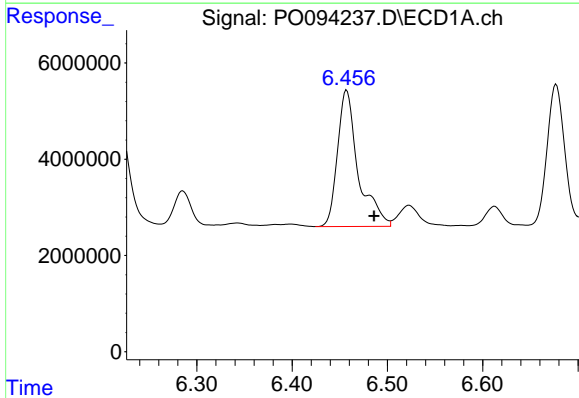
R.T.: 6.076 min  
 Delta R.T.: -0.004 min  
 Response: 46859890  
 Conc: 388.17 ng/ml

Instrument :  
 ECD\_O  
 ClientSampleId :



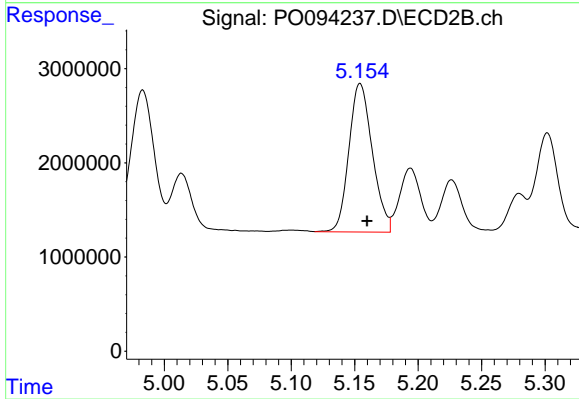
#23 AR-1248-3

R.T.: 4.983 min  
 Delta R.T.: -0.005 min  
 Response: 18507089  
 Conc: 443.40 ng/ml



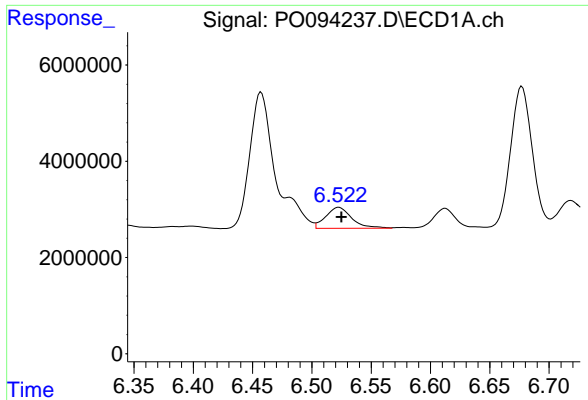
#24 AR-1248-4

R.T.: 6.457 min  
 Delta R.T.: -0.029 min  
 Response: 42845407  
 Conc: 398.94 ng/ml



#24 AR-1248-4

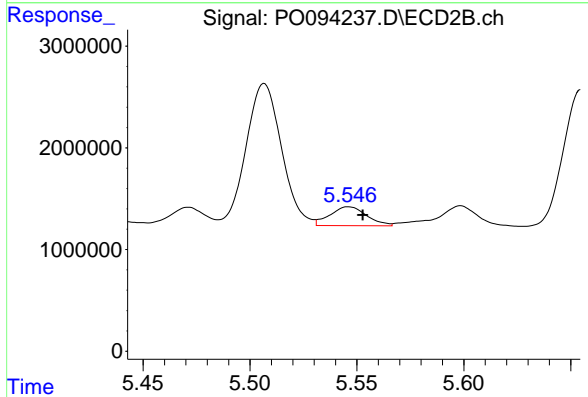
R.T.: 5.154 min  
 Delta R.T.: -0.005 min  
 Response: 20278822  
 Conc: 431.24 ng/ml



#25 AR-1248-5

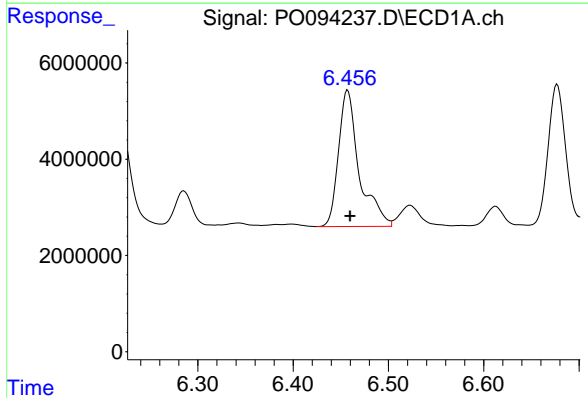
R.T.: 6.523 min  
 Delta R.T.: -0.002 min  
 Response: 6648748  
 Conc: 57.30 ng/ml

Instrument :  
 ECD\_O  
 ClientSampleId :



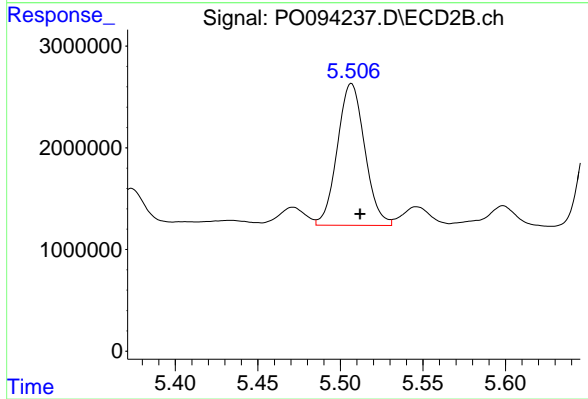
#25 AR-1248-5

R.T.: 5.546 min  
 Delta R.T.: -0.007 min  
 Response: 2211249  
 Conc: 59.23 ng/ml



#26 AR-1254-1

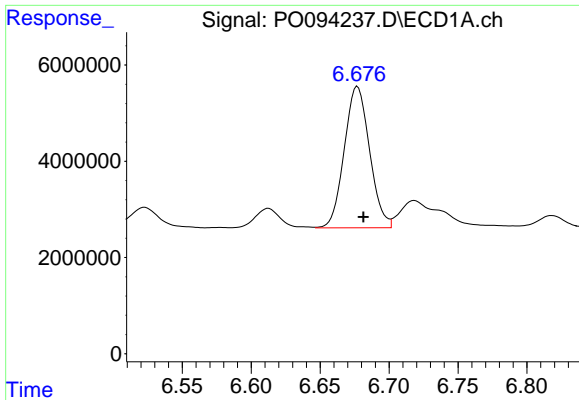
R.T.: 6.457 min  
 Delta R.T.: -0.003 min  
 Response: 42845407  
 Conc: 315.91 ng/ml



#26 AR-1254-1

R.T.: 5.507 min  
 Delta R.T.: -0.005 min  
 Response: 16101111  
 Conc: 235.56 ng/ml

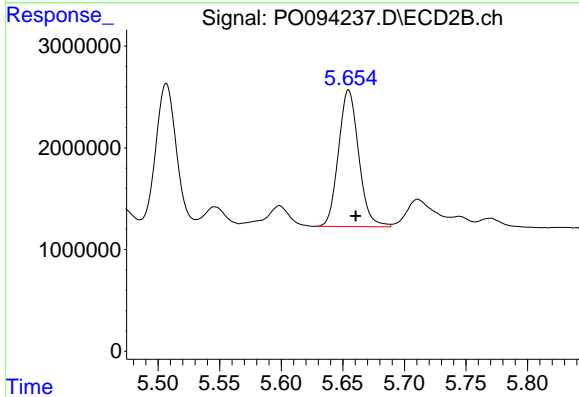




#27 AR-1254-2

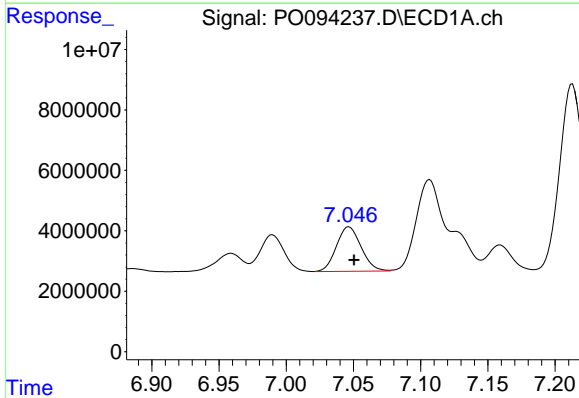
R.T.: 6.677 min  
 Delta R.T.: -0.004 min  
 Response: 37541836  
 Conc: 192.06 ng/ml

Instrument :  
 ECD\_O  
 ClientSampleId :



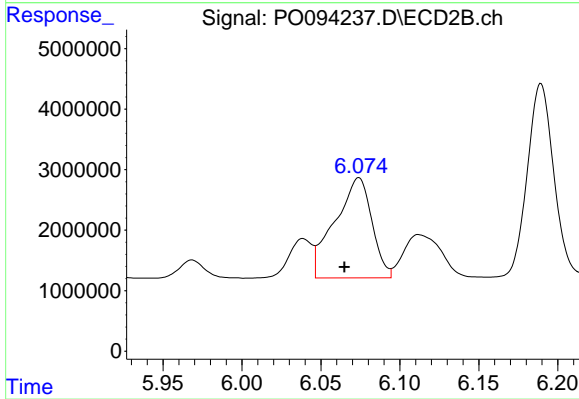
#27 AR-1254-2

R.T.: 5.655 min  
 Delta R.T.: -0.006 min  
 Response: 15303789  
 Conc: 251.27 ng/ml



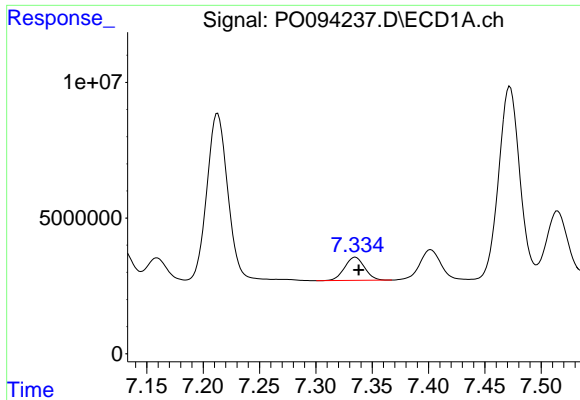
#28 AR-1254-3

R.T.: 7.047 min  
 Delta R.T.: -0.004 min  
 Response: 18727388  
 Conc: 101.37 ng/ml



#28 AR-1254-3

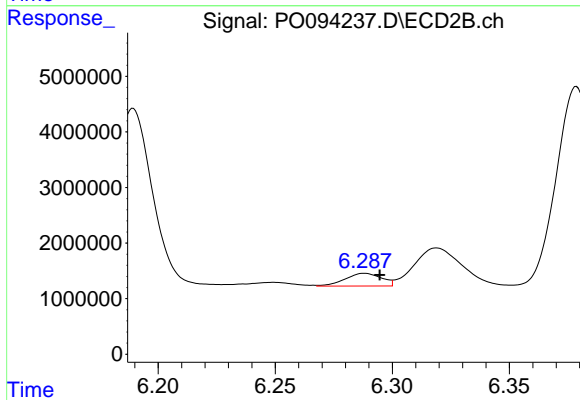
R.T.: 6.074 min  
 Delta R.T.: 0.009 min  
 Response: 27005978  
 Conc: 296.48 ng/ml



#29 AR-1254-4

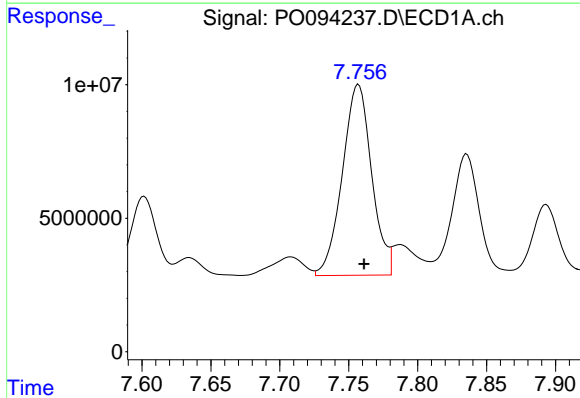
R.T.: 7.335 min  
 Delta R.T.: -0.003 min  
 Response: 10559179  
 Conc: 104.12 ng/ml

Instrument :  
 ECD\_O  
 ClientSampleId :



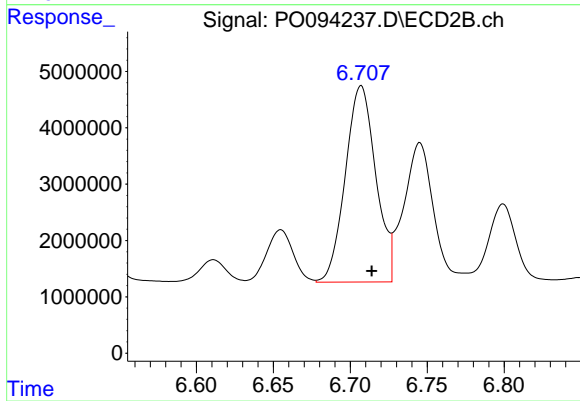
#29 AR-1254-4

R.T.: 6.288 min  
 Delta R.T.: -0.006 min  
 Response: 2454077  
 Conc: 57.61 ng/ml



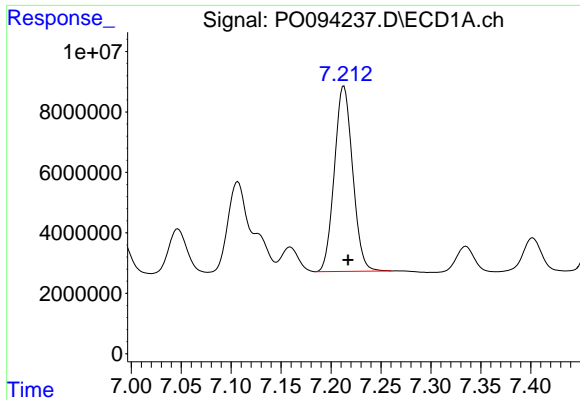
#30 AR-1254-5

R.T.: 7.757 min  
 Delta R.T.: -0.004 min  
 Response: 105748855  
 Conc: 779.83 ng/ml



#30 AR-1254-5

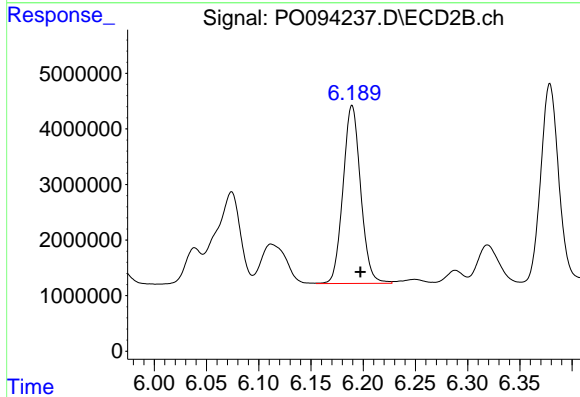
R.T.: 6.707 min  
 Delta R.T.: -0.007 min  
 Response: 47997012  
 Conc: 665.21 ng/ml



#31 AR-1260-1

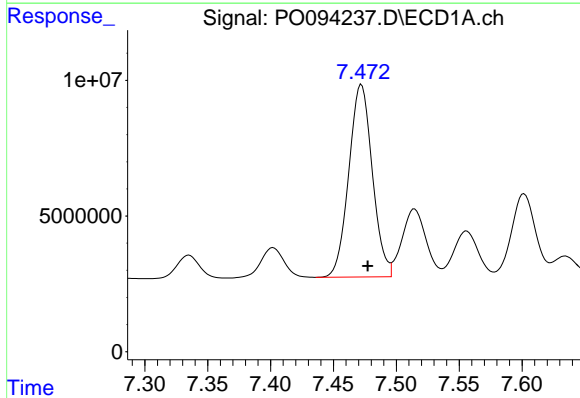
R.T.: 7.213 min  
 Delta R.T.: -0.004 min  
 Response: 78074360  
 Conc: 534.88 ng/ml

Instrument :  
 ECD\_O  
 ClientSampleId :



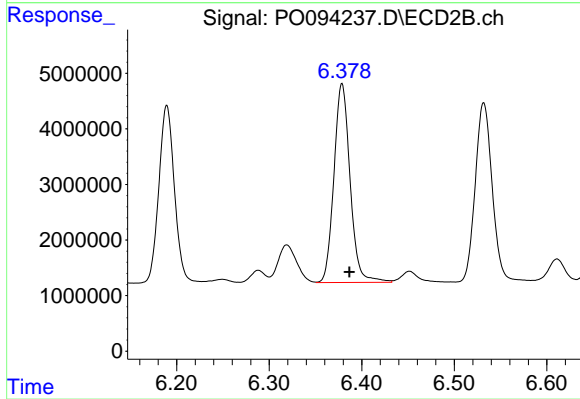
#31 AR-1260-1

R.T.: 6.189 min  
 Delta R.T.: -0.008 min  
 Response: 37627432  
 Conc: 577.01 ng/ml



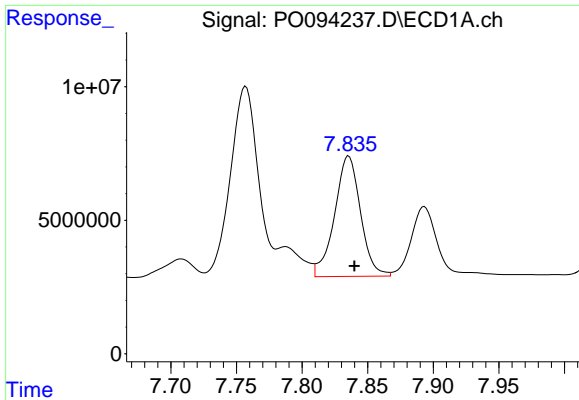
#32 AR-1260-2

R.T.: 7.472 min  
 Delta R.T.: -0.005 min  
 Response: 92300167  
 Conc: 576.68 ng/ml



#32 AR-1260-2

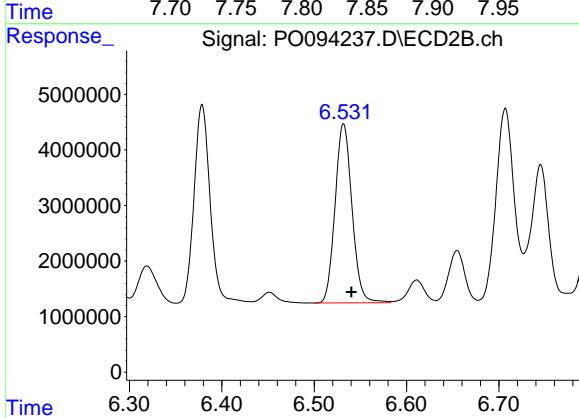
R.T.: 6.379 min  
 Delta R.T.: -0.008 min  
 Response: 43518239  
 Conc: 599.23 ng/ml



#33 AR-1260-3

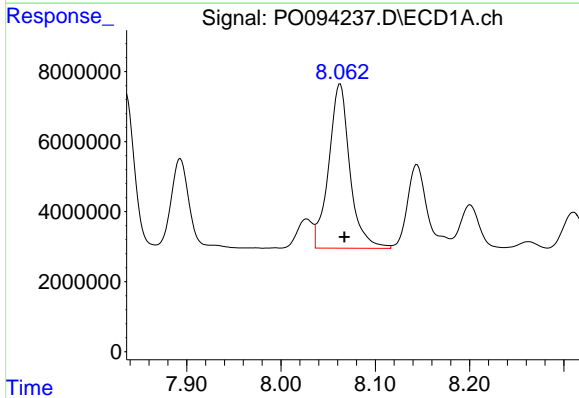
R.T.: 7.836 min  
Delta R.T.: -0.004 min  
Response: 62215473  
Conc: 468.57 ng/ml

Instrument :  
ECD\_O  
ClientSampleId :



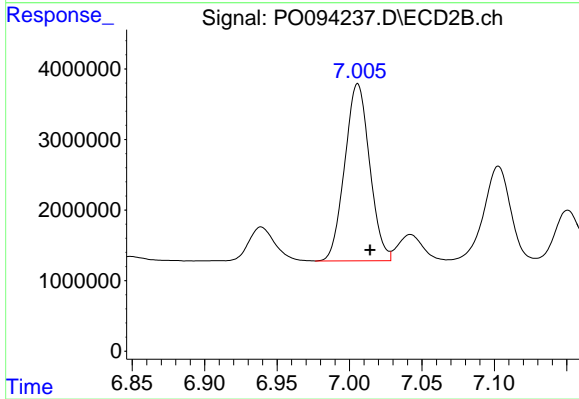
#33 AR-1260-3

R.T.: 6.532 min  
Delta R.T.: -0.008 min  
Response: 41085319  
Conc: 566.12 ng/ml



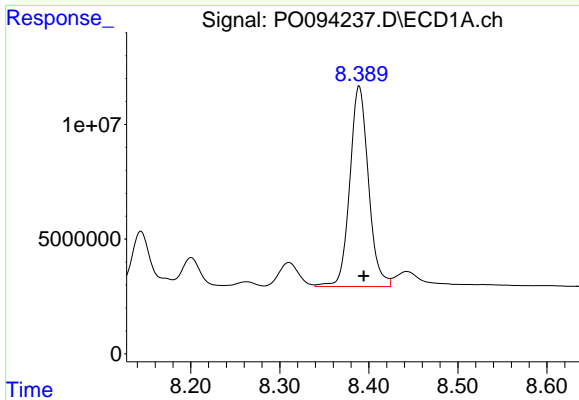
#34 AR-1260-4

R.T.: 8.063 min  
Delta R.T.: -0.005 min  
Response: 73338402  
Conc: 532.43 ng/ml



#34 AR-1260-4

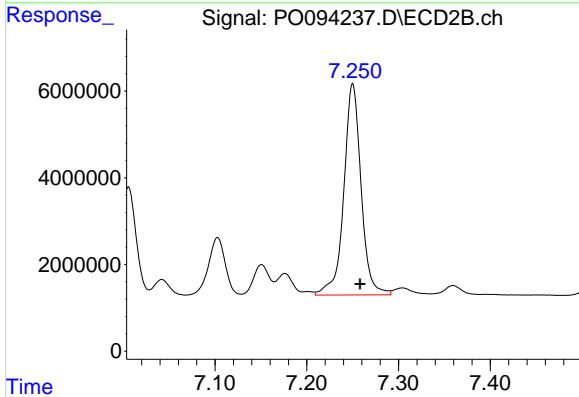
R.T.: 7.006 min  
Delta R.T.: -0.009 min  
Response: 29995272  
Conc: 540.14 ng/ml



#35 AR-1260-5

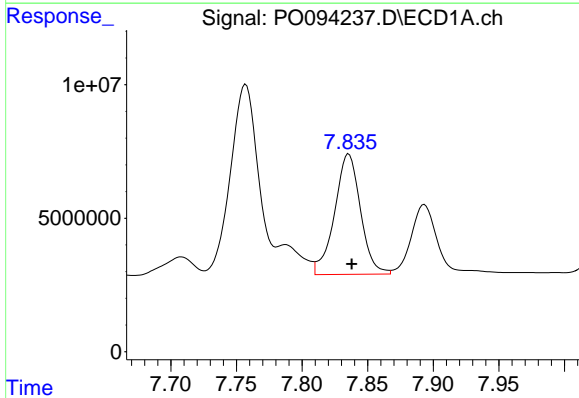
R.T.: 8.389 min  
Delta R.T.: -0.005 min  
Response: 127097806  
Conc: 583.58 ng/ml

Instrument :  
ECD\_O  
ClientSampleId :



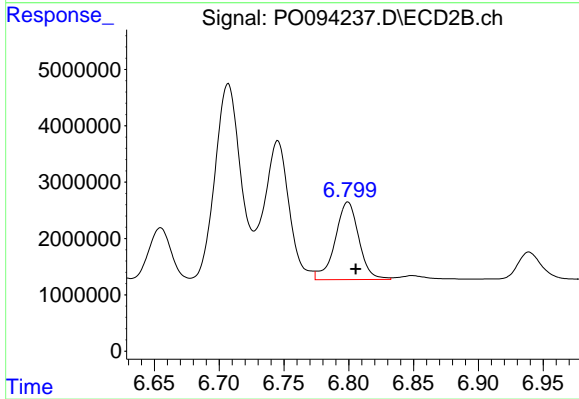
#35 AR-1260-5

R.T.: 7.250 min  
Delta R.T.: -0.008 min  
Response: 63854244  
Conc: 615.32 ng/ml



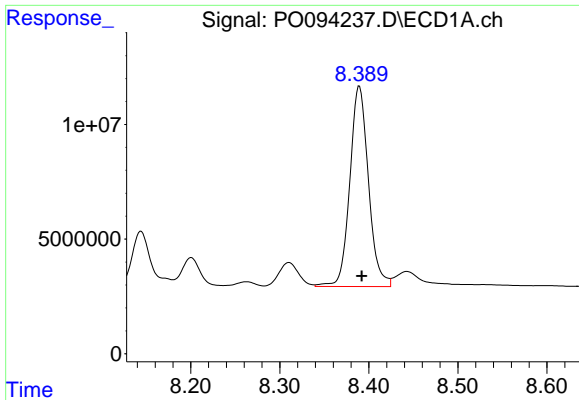
#36 AR-1262-1

R.T.: 7.836 min  
Delta R.T.: -0.002 min  
Response: 62215473  
Conc: 364.21 ng/ml



#36 AR-1262-1

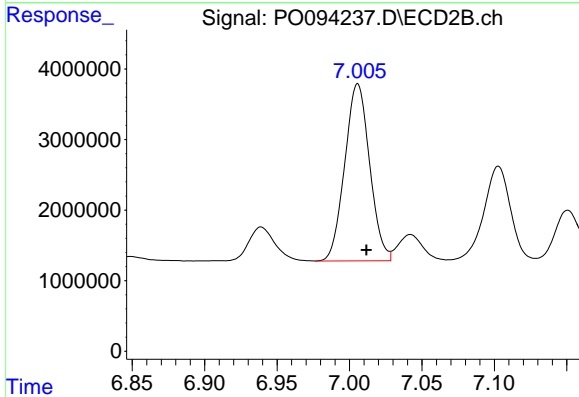
R.T.: 6.799 min  
Delta R.T.: -0.006 min  
Response: 17561073  
Conc: 501.92 ng/ml



#37 AR-1262-2

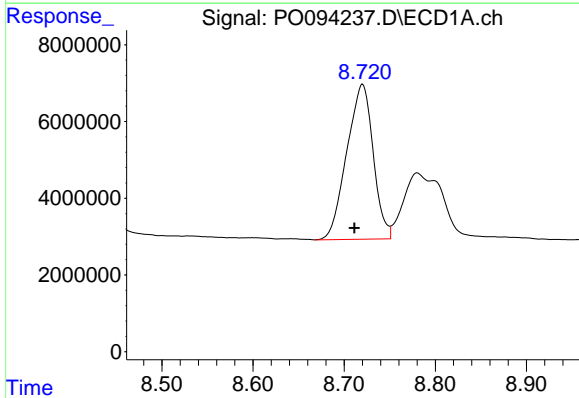
R.T.: 8.389 min  
 Delta R.T.: -0.003 min  
 Response: 127097806  
 Conc: 546.77 ng/ml

Instrument :  
 ECD\_O  
 ClientSampleId :



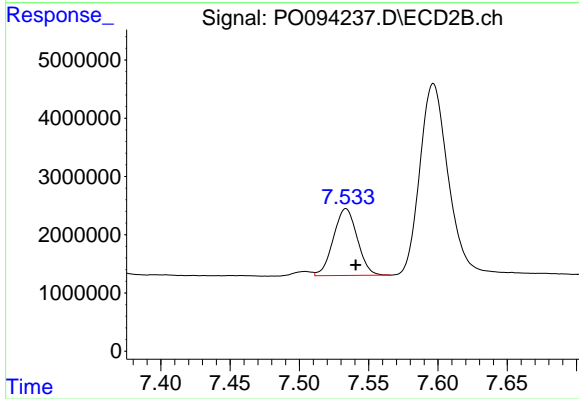
#37 AR-1262-2

R.T.: 7.006 min  
 Delta R.T.: -0.006 min  
 Response: 29995272  
 Conc: 424.54 ng/ml



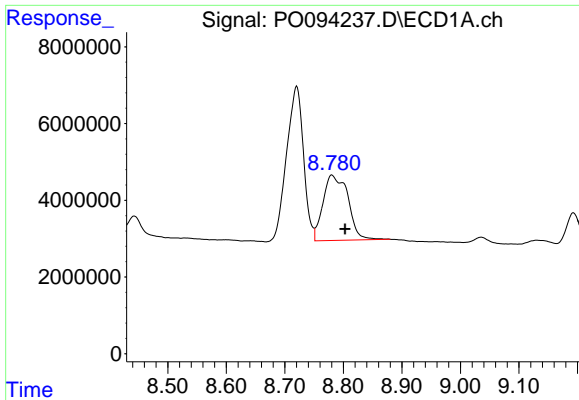
#38 AR-1262-3

R.T.: 8.720 min  
 Delta R.T.: 0.009 min  
 Response: 81403020  
 Conc: 496.95 ng/ml



#38 AR-1262-3

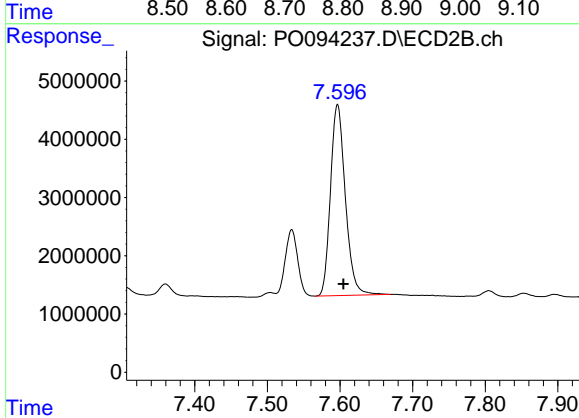
R.T.: 7.534 min  
 Delta R.T.: -0.007 min  
 Response: 13780088  
 Conc: 275.42 ng/ml



#39 AR-1262-4

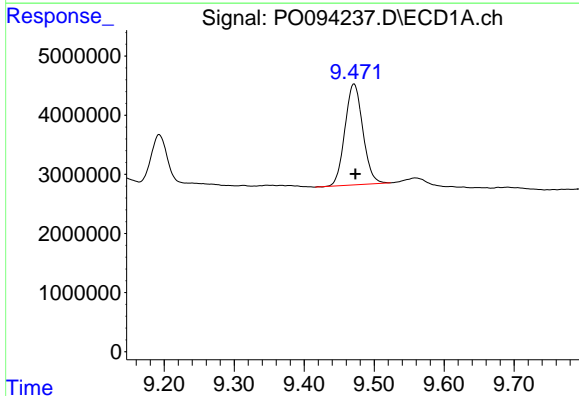
R.T.: 8.781 min  
 Delta R.T.: -0.022 min  
 Response: 50423078  
 Conc: 503.26 ng/ml

Instrument :  
 ECD\_O  
 ClientSampleId :



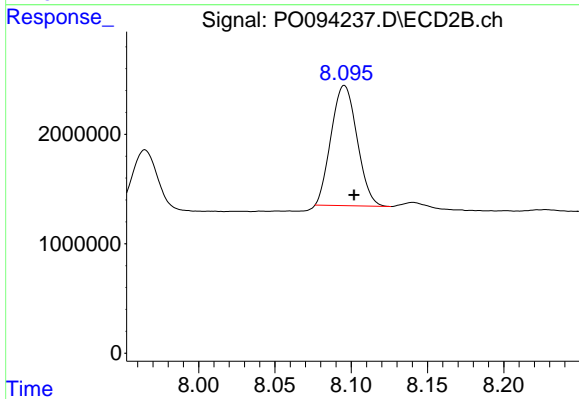
#39 AR-1262-4

R.T.: 7.597 min  
 Delta R.T.: -0.008 min  
 Response: 46678375  
 Conc: 562.86 ng/ml



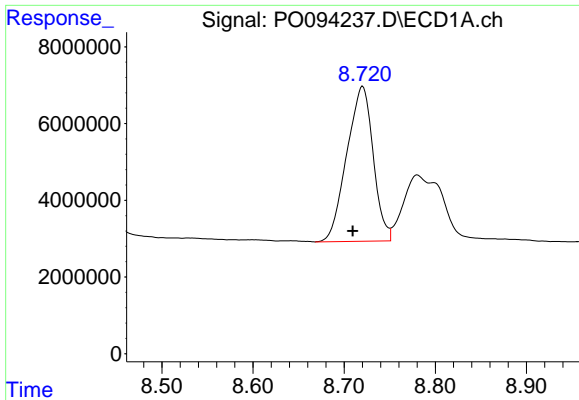
#40 AR-1262-5

R.T.: 9.471 min  
 Delta R.T.: -0.002 min  
 Response: 30313242  
 Conc: 376.63 ng/ml



#40 AR-1262-5

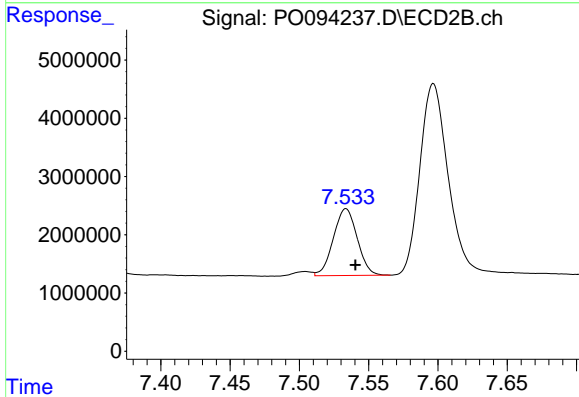
R.T.: 8.096 min  
 Delta R.T.: -0.006 min  
 Response: 13002020  
 Conc: 399.69 ng/ml



#41 AR-1268-1

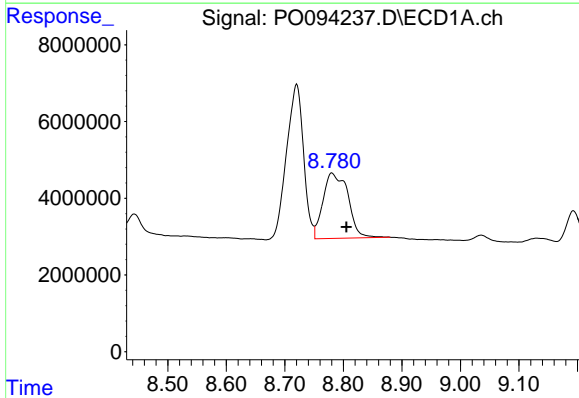
R.T.: 8.720 min  
 Delta R.T.: 0.011 min  
 Response: 81403020  
 Conc: 241.87 ng/ml

Instrument :  
 ECD\_O  
 ClientSampleId :



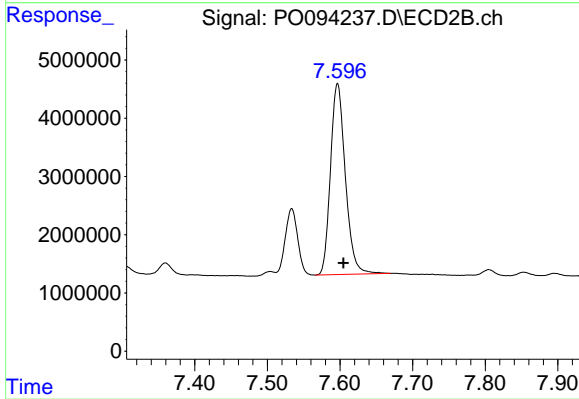
#41 AR-1268-1

R.T.: 7.534 min  
 Delta R.T.: -0.007 min  
 Response: 13780088  
 Conc: 90.21 ng/ml



#42 AR-1268-2

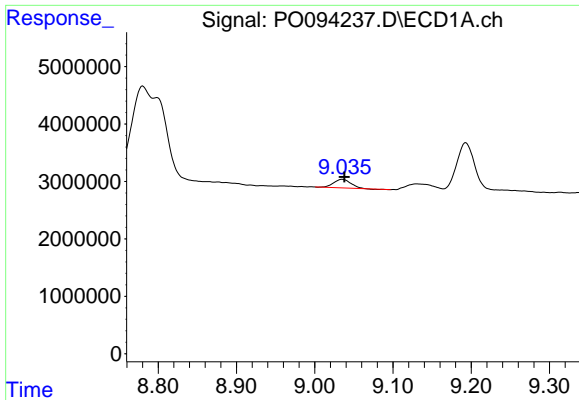
R.T.: 8.781 min  
 Delta R.T.: -0.024 min  
 Response: 50423078  
 Conc: 156.67 ng/ml



#42 AR-1268-2

R.T.: 7.597 min  
 Delta R.T.: -0.008 min  
 Response: 46678375  
 Conc: 343.57 ng/ml

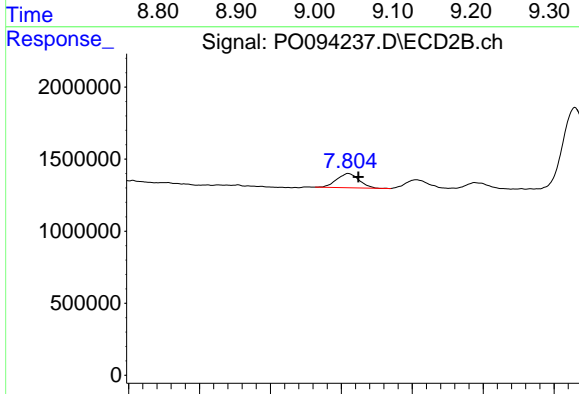




#43 AR-1268-3

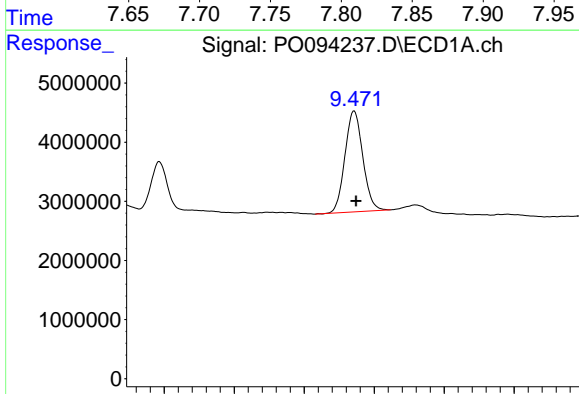
R.T.: 9.035 min  
 Delta R.T.: -0.003 min  
 Response: 2234050  
 Conc: 7.88 ng/ml

Instrument :  
 ECD\_O  
 ClientSampleId :



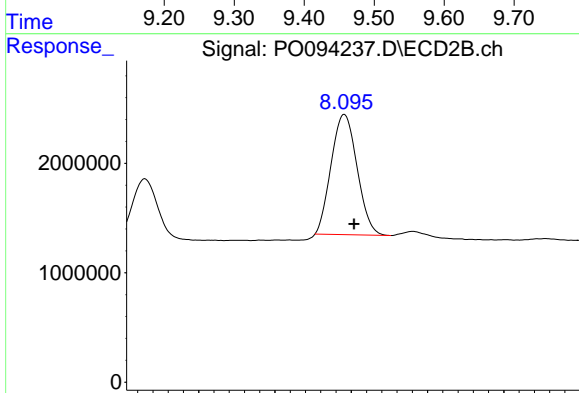
#43 AR-1268-3

R.T.: 7.805 min  
 Delta R.T.: -0.007 min  
 Response: 1073784  
 Conc: 8.20 ng/ml



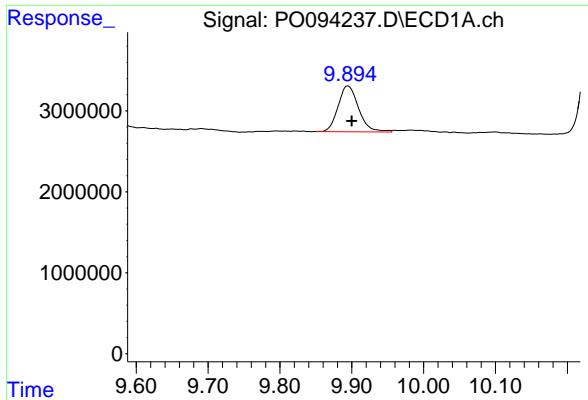
#44 AR-1268-4

R.T.: 9.471 min  
 Delta R.T.: -0.003 min  
 Response: 30313242  
 Conc: 313.52 ng/ml



#44 AR-1268-4

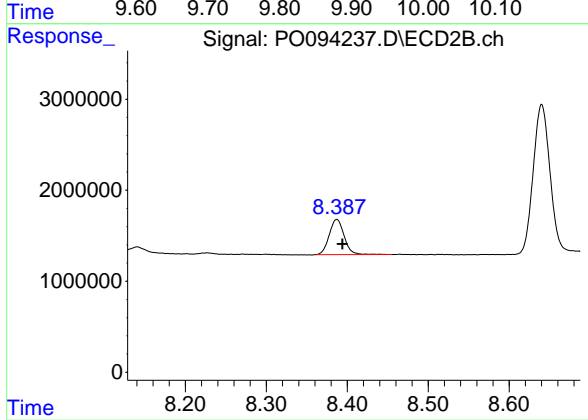
R.T.: 8.096 min  
 Delta R.T.: -0.006 min  
 Response: 13002020  
 Conc: 328.47 ng/ml



#45 AR-1268-5

R.T.: 9.895 min  
 Delta R.T.: -0.005 min  
 Response: 11258109  
 Conc: 13.40 ng/ml

Instrument :  
 ECD\_O  
 ClientSampleId :



#45 AR-1268-5

R.T.: 8.387 min  
 Delta R.T.: -0.007 min  
 Response: 4971404  
 Conc: 14.18 ng/ml