

Data Path : Z:\pestpcbsrv\HPCHEM1\ECD_O\Data\P0041423\
 Data File : P0094256.D
 Signal(s) : Signal #1: ECD1A.ch Signal #2: ECD2B.ch
 Acq On : 14 Apr 2023 19:26
 Operator : YP/AJ
 Sample : 02348-01
 Misc :
 ALS Vial : 25 Sample Multiplier: 1

Instrument :
 ECD_O
 ClientSampleId :

Integration File signal 1: autoint1.e
 Integration File signal 2: autoint2.e
 Quant Time: Apr 14 22:38:52 2023
 Quant Method : Z:\pestpcbsrv\HPCHEM1\ECD_O\methods\P0040323.M
 Quant Title : GC EXTRACTABLES
 QLast Update : Tue Apr 04 06:20:55 2023
 Response via : Initial Calibration
 Integrator: ChemStation

Volume Inj. : 2 µl
 Signal #1 Phase : ZB-MR1 Signal #2 Phase: ZB-MR2
 Signal #1 Info : 30Mx0.32mmx 0.50µ Signal #2 Info : 30M x 0.32mm x 0.25µm

Compound	RT#1	RT#2	Resp#1	Resp#2	ng/ml	ng/ml

System Monitoring Compounds						
1) SA Tetrachlo...	4.418	3.621	77996274	27720569	20.865	21.769
2) SA Decachlor...	10.243	8.641	65147942	25412693	29.124	25.418
Target Compounds						
3) L1 AR-1016-1	5.585	4.712	6984689	1242185	68.301	35.008 #
4) L1 AR-1016-2	5.617	4.737	3300708	2709966	21.178	50.174 #
5) L1 AR-1016-3	5.696	4.904	4394235	2269694	44.552	80.078 #
6) L1 AR-1016-4	5.778	4.958	1792759	6754600	24.382	255.801 #
7) L1 AR-1016-5	6.058	5.142	13672706	7397035	161.497	226.061 #
8) L2 AR-1221-1	4.624	3.860	2152230	2188633	46.666	139.770 #
9) L2 AR-1221-2	4.735	3.924	8575375	1037740	249.818	87.926 #
10) L2 AR-1221-3	4.787	0.000	13062613	0	124.720	N.D. #
11) L3 AR-1232-1	4.787	0.000	13062613	0	149.669	N.D. #
12) L3 AR-1232-2	5.348	4.737	6618601	2709966	154.766	102.365 #
13) L3 AR-1232-3	5.617	4.904	3300708	2269694	44.934	172.088 #
14) L3 AR-1232-4	5.778	4.984	1792759	7084006	52.081	498.488 #
15) L3 AR-1232-5	5.870	5.142	9687807	7397035	305.009	478.818 #
16) L4 AR-1242-1	5.585	4.712	6984689	1242185	80.022	40.367 #
17) L4 AR-1242-2	5.617	4.737	3300708	2709966	24.824	58.920 #
18) L4 AR-1242-3	5.696	4.904	4394235	2269694	51.765	93.656 #
19) L4 AR-1242-4	5.778	4.984	1792759	7084006	28.693	252.336 #
20) L4 AR-1242-5	6.533	5.552f	11552519	12729835	171.580	446.490 #
21) L5 AR-1248-1	5.585	4.712	6984689	1242185	103.812	52.080 #
22) L5 AR-1248-2	5.870	4.958	9687807	6754600	88.565	169.573 #
23) L5 AR-1248-3	6.058	4.984	13672706	7084006	113.259	169.721 #
24) L5 AR-1248-4	6.495	5.142	19347797	7397035	180.152	157.303
25) L5 AR-1248-5	6.533	5.552	11552519	12729835	99.570	340.972 #
26) L6 AR-1254-1	6.437	5.552f	25294044	12729835	186.497	186.235
27) L6 AR-1254-2	6.676	5.711f	13128108	4772570	67.161	78.361
28) L6 AR-1254-3	7.042	6.053	3622766	1587556	19.610	17.429
29) L6 AR-1254-4	7.333	6.287	1175191	2221036	11.588	52.143 #
30) L6 AR-1254-5	7.761	6.707	6102791	1048156	45.004	14.527 #
31) L7 AR-1260-1	7.212	6.201	1701851	2511859	11.659	38.519 #
32) L7 AR-1260-2	7.462	6.378	2815681	2170799	17.592	29.891 #
33) L7 AR-1260-3	7.838	6.547	6483493	2557343	48.830	35.238 #
34) L7 AR-1260-4	8.049	0.000	1584569	0	11.504	N.D. #
35) L7 AR-1260-5	8.389	7.250	861819	937792	3.957	9.037 #
36) L8 AR-1262-1	7.838	6.856f	6483493	2715617	37.955	77.616 #
37) L8 AR-1262-2	8.389	0.000	861819	0	3.708	N.D. #
38) L8 AR-1262-3	8.701	0.000	712140	0	4.347	N.D. #
39) L8 AR-1262-4	8.810	7.613	958697	1535704	9.568	18.518 #
40) L8 AR-1262-5	9.458	0.000	478659	0	5.947	N.D. #
41) L9 AR-1268-1	8.701	0.000	712140	0	2.116	N.D. #

Data Path : Z:\pestpcbsrv\HPCHEM1\ECD_0\Data\P0041423\
 Data File : P0094256.D
 Signal(s) : Signal #1: ECD1A.ch Signal #2: ECD2B.ch
 Acq On : 14 Apr 2023 19:26
 Operator : YP/AJ
 Sample : 02348-01
 Misc :
 ALS Vial : 25 Sample Multiplier: 1

Instrument :
 ECD_0
 ClientSampleId :

Integration File signal 1: autoint1.e
 Integration File signal 2: autoint2.e
 Quant Time: Apr 14 22:38:52 2023
 Quant Method : Z:\pestpcbsrv\HPCHEM1\ECD_0\methods\P0040323.M
 Quant Title : GC EXTRACTABLES
 QLast Update : Tue Apr 04 06:20:55 2023
 Response via : Initial Calibration
 Integrator: ChemStation

Volume Inj. : 2 µl
 Signal #1 Phase : ZB-MR1 Signal #2 Phase: ZB-MR2
 Signal #1 Info : 30Mx0.32mmx 0.50µ Signal #2 Info : 30M x 0.32mm x 0.25µm

	Compound	RT#1	RT#2	Resp#1	Resp#2	ng/ml	ng/ml
42)	L9 AR-1268-2	8.810	7.613	958697	1535704	2.979	11.303 #
43)	L9 AR-1268-3	9.035	0.000	301388	0	1.063	N.D. #
44)	L9 AR-1268-4	9.458	0.000	478659	0	4.951	N.D. #
45)	L9 AR-1268-5	9.895	0.000	368410	0	0.439	N.D. #

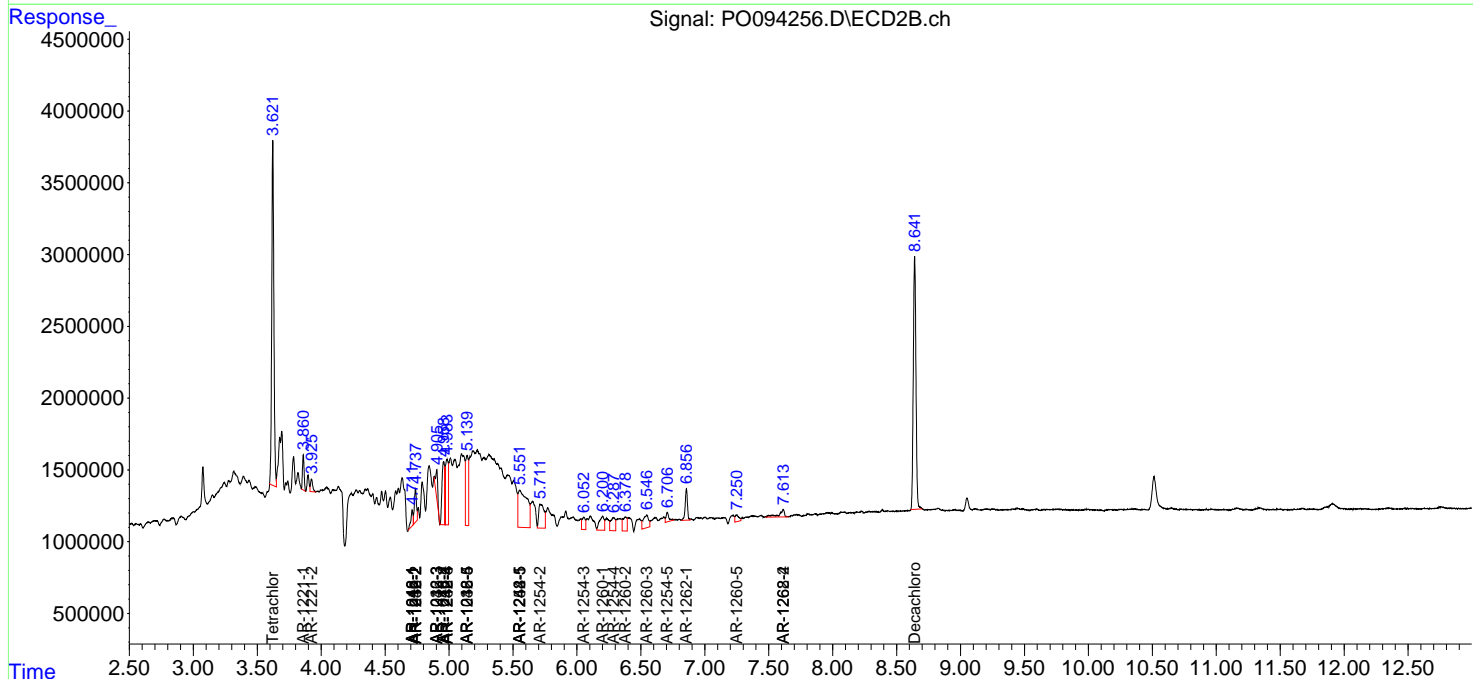
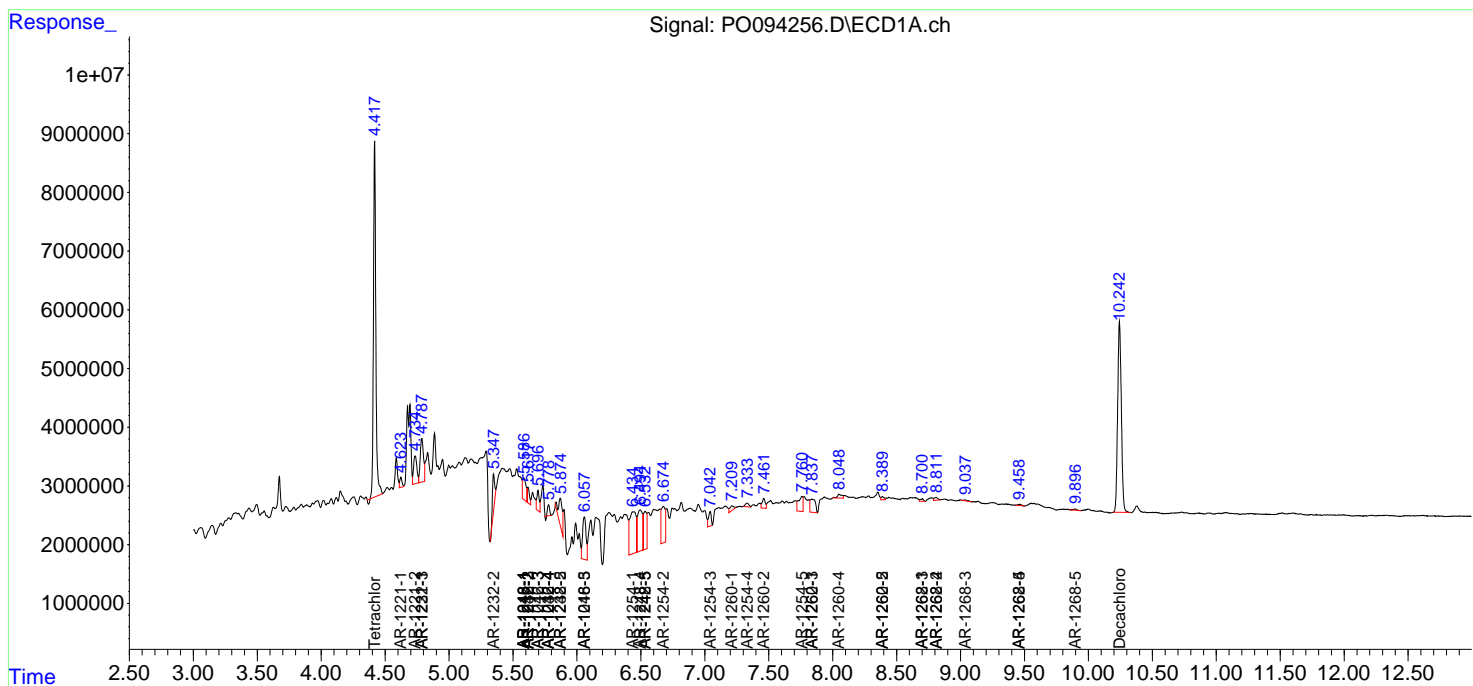
(f)=RT Delta > 1/2 Window (#)=Amounts differ by > 25% (m)=manual int.

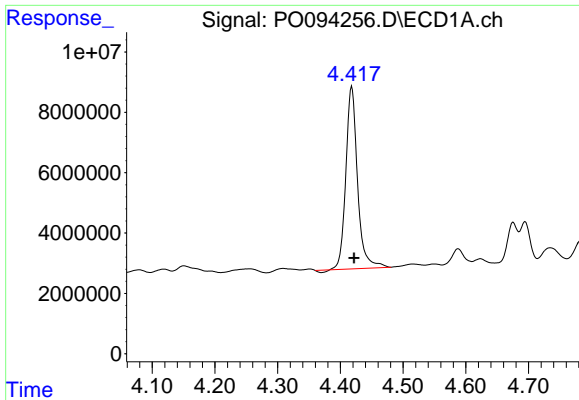
Data Path : Z:\pestpcbsrv\HPCHEM1\ECD_O\Data\PO041423\
 Data File : PO094256.D
 Signal(s) : Signal #1: ECD1A.ch Signal #2: ECD2B.ch
 Acq On : 14 Apr 2023 19:26
 Operator : YP/AJ
 Sample : 02348-01
 Misc :
 ALS Vial : 25 Sample Multiplier: 1

Instrument :
 ECD_O
 ClientSampleId :

Integration File signal 1: autoint1.e
 Integration File signal 2: autoint2.e
 Quant Time: Apr 14 22:38:52 2023
 Quant Method : Z:\pestpcbsrv\HPCHEM1\ECD_O\methods\PO040323.M
 Quant Title : GC EXTRACTABLES
 QLast Update : Tue Apr 04 06:20:55 2023
 Response via : Initial Calibration
 Integrator: ChemStation

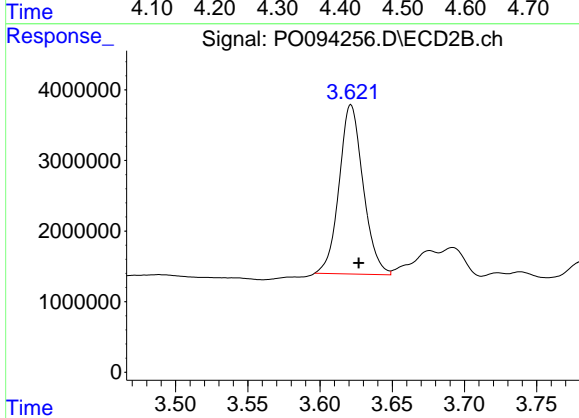
Volume Inj. : 2 µl
 Signal #1 Phase : ZB-MR1 Signal #2 Phase: ZB-MR2
 Signal #1 Info : 30Mx0.32mmx 0.50µ Signal #2 Info : 30M x 0.32mm x 0.25µm



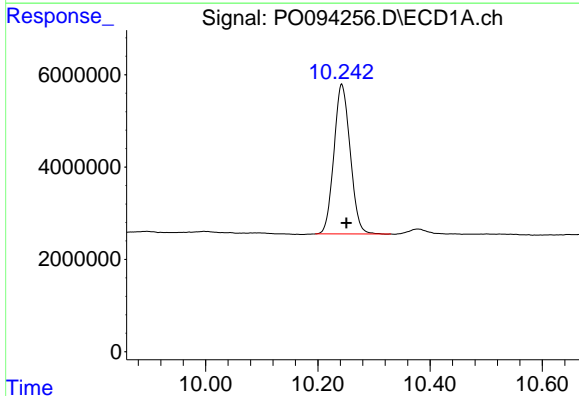


#1 Tetrachloro-m-xylene
 R.T.: 4.418 min
 Delta R.T.: -0.004 min
 Response: 77996274
 Conc: 20.86 ng/ml

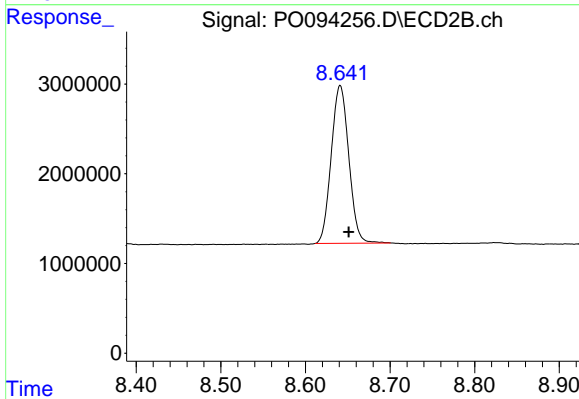
Instrument :
 ECD_O
 ClientSampleId :



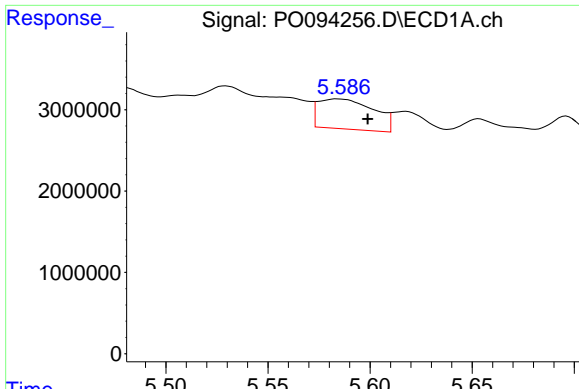
#1 Tetrachloro-m-xylene
 R.T.: 3.621 min
 Delta R.T.: -0.005 min
 Response: 27720569
 Conc: 21.77 ng/ml



#2 Decachlorobiphenyl
 R.T.: 10.243 min
 Delta R.T.: -0.008 min
 Response: 65147942
 Conc: 29.12 ng/ml



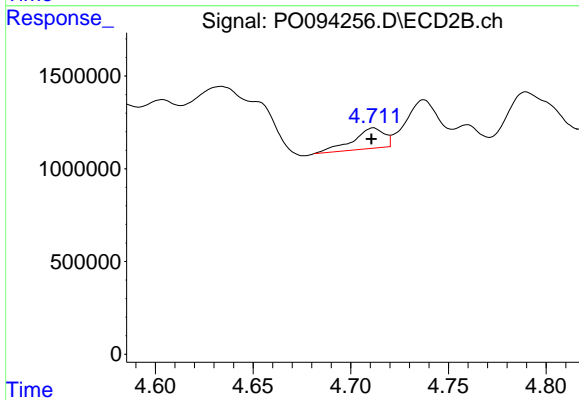
#2 Decachlorobiphenyl
 R.T.: 8.641 min
 Delta R.T.: -0.010 min
 Response: 25412693
 Conc: 25.42 ng/ml



#3 AR-1016-1

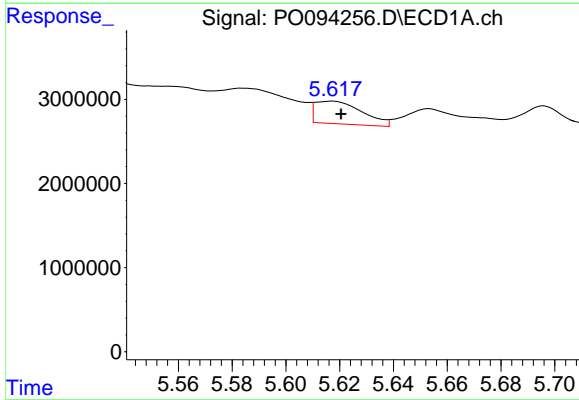
R.T.: 5.585 min
 Delta R.T.: -0.014 min
 Response: 6984689
 Conc: 68.30 ng/ml

Instrument :
 ECD_O
 ClientSampleId :



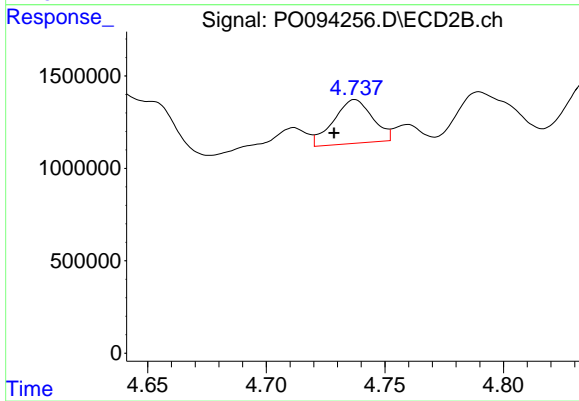
#3 AR-1016-1

R.T.: 4.712 min
 Delta R.T.: 0.001 min
 Response: 1242185
 Conc: 35.01 ng/ml



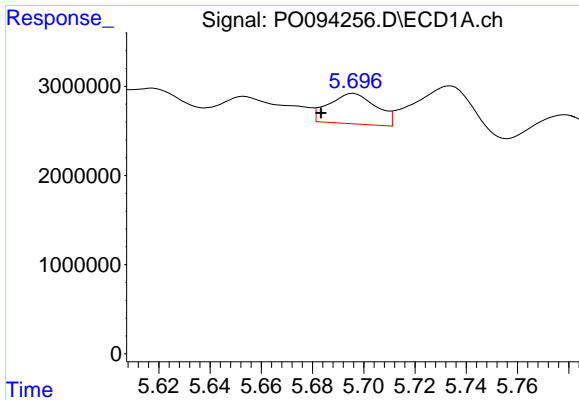
#4 AR-1016-2

R.T.: 5.617 min
 Delta R.T.: -0.004 min
 Response: 3300708
 Conc: 21.18 ng/ml



#4 AR-1016-2

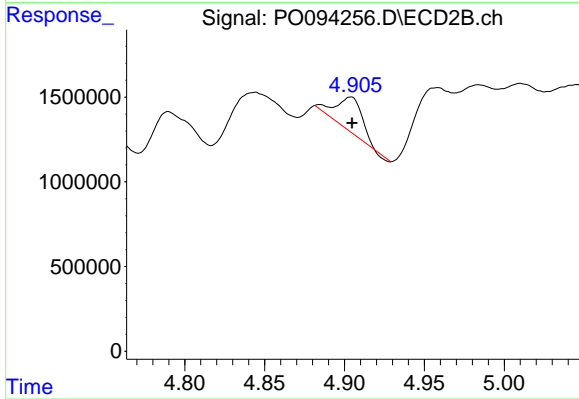
R.T.: 4.737 min
 Delta R.T.: 0.009 min
 Response: 2709966
 Conc: 50.17 ng/ml



#5 AR-1016-3

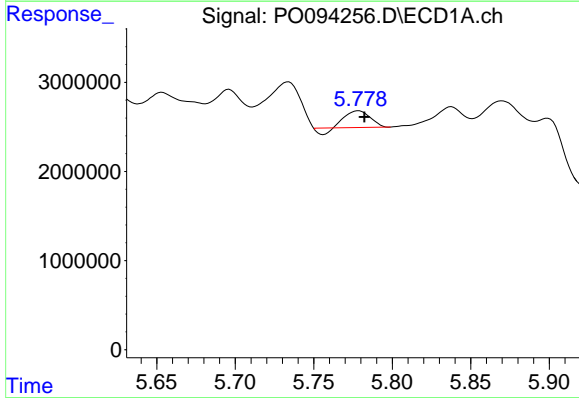
R.T.: 5.696 min
 Delta R.T.: 0.013 min
 Response: 4394235
 Conc: 44.55 ng/ml

Instrument :
 ECD_O
 ClientSampleId :



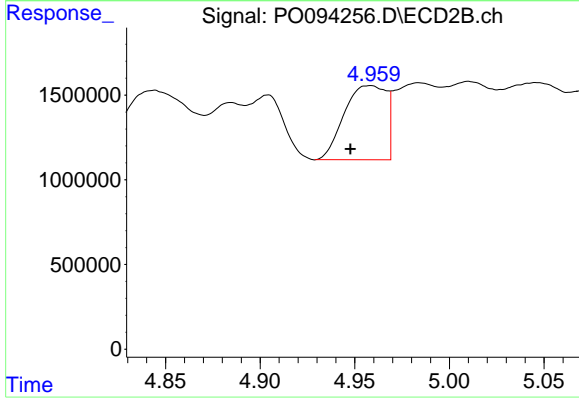
#5 AR-1016-3

R.T.: 4.904 min
 Delta R.T.: 0.000 min
 Response: 2269694
 Conc: 80.08 ng/ml



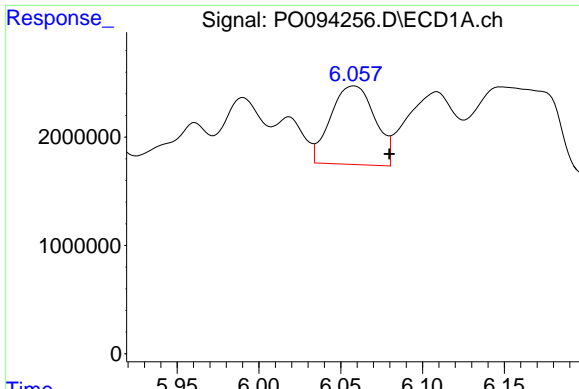
#6 AR-1016-4

R.T.: 5.778 min
 Delta R.T.: -0.004 min
 Response: 1792759
 Conc: 24.38 ng/ml



#6 AR-1016-4

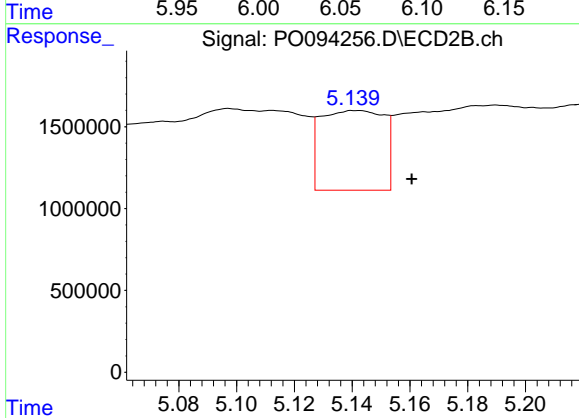
R.T.: 4.958 min
 Delta R.T.: 0.010 min
 Response: 6754600
 Conc: 255.80 ng/ml



#7 AR-1016-5

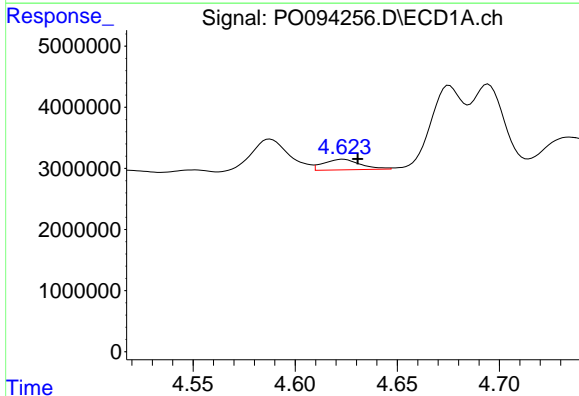
R.T.: 6.058 min
 Delta R.T.: -0.022 min
 Response: 13672706
 Conc: 161.50 ng/ml

Instrument :
 ECD_O
 ClientSampleId :



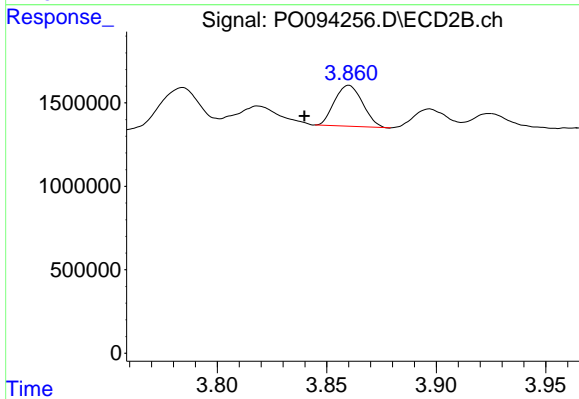
#7 AR-1016-5

R.T.: 5.142 min
 Delta R.T.: -0.019 min
 Response: 7397035
 Conc: 226.06 ng/ml



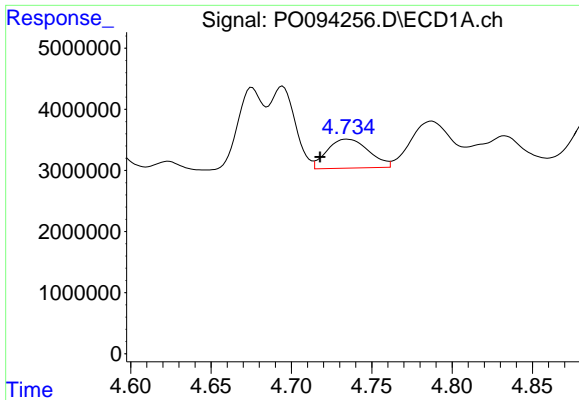
#8 AR-1221-1

R.T.: 4.624 min
 Delta R.T.: -0.007 min
 Response: 2152230
 Conc: 46.67 ng/ml



#8 AR-1221-1

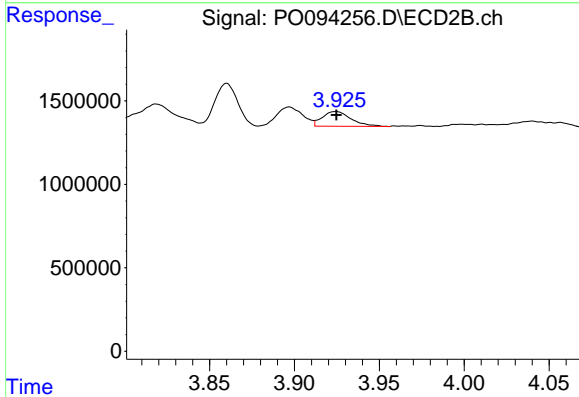
R.T.: 3.860 min
 Delta R.T.: 0.020 min
 Response: 2188633
 Conc: 139.77 ng/ml



#9 AR-1221-2

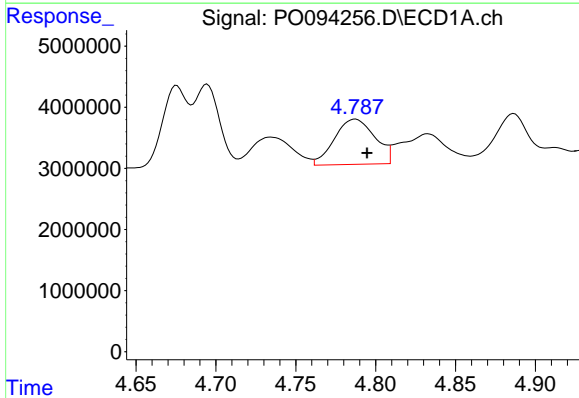
R.T.: 4.735 min
 Delta R.T.: 0.017 min
 Response: 8575375
 Conc: 249.82 ng/ml

Instrument :
 ECD_O
 ClientSampleId :



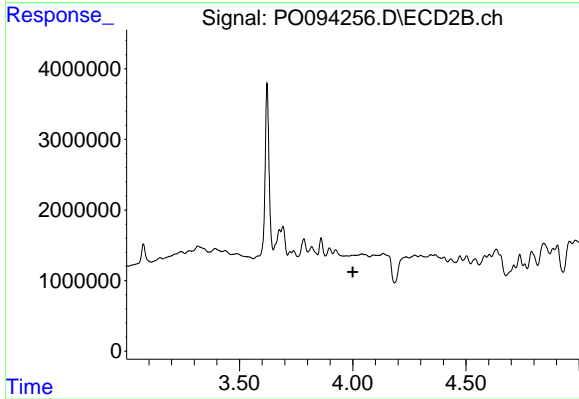
#9 AR-1221-2

R.T.: 3.924 min
 Delta R.T.: 0.000 min
 Response: 1037740
 Conc: 87.93 ng/ml



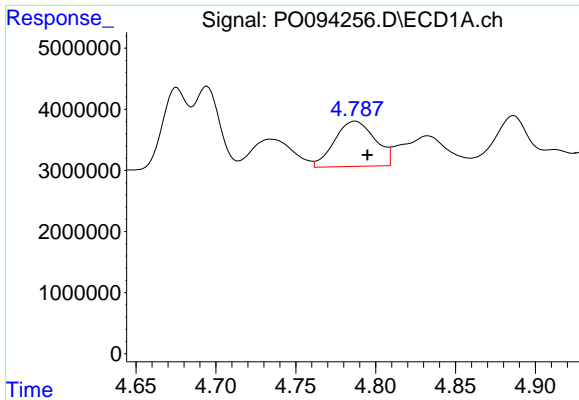
#10 AR-1221-3

R.T.: 4.787 min
 Delta R.T.: -0.007 min
 Response: 13062613
 Conc: 124.72 ng/ml



#10 AR-1221-3

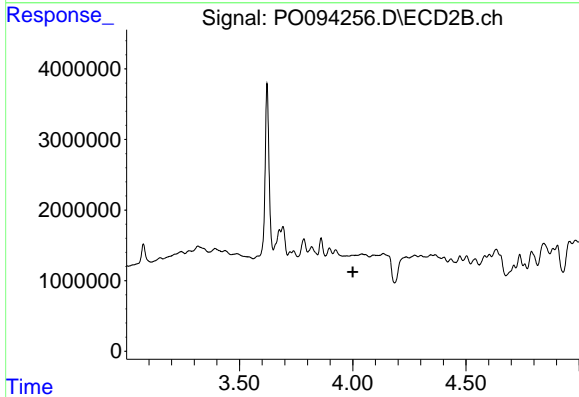
R.T.: 0.000 min
 Exp R.T. : 4.000 min
 Response: 0
 Conc: N.D.



#11 AR-1232-1

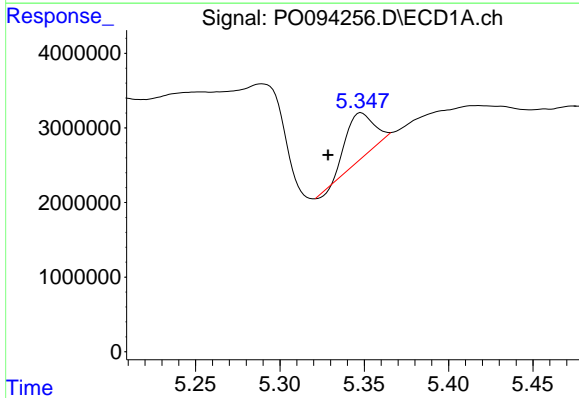
R.T.: 4.787 min
 Delta R.T.: -0.008 min
 Response: 13062613
 Conc: 149.67 ng/ml

Instrument :
 ECD_O
 ClientSampleId :



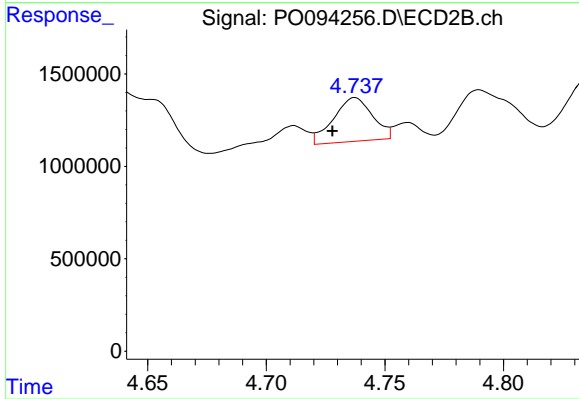
#11 AR-1232-1

R.T.: 0.000 min
 Exp R.T. : 4.000 min
 Response: 0
 Conc: N.D.



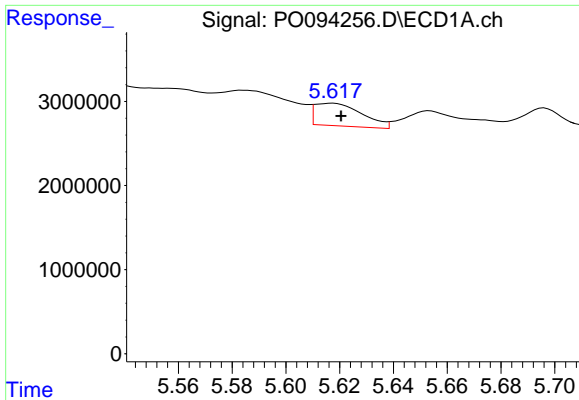
#12 AR-1232-2

R.T.: 5.348 min
 Delta R.T.: 0.020 min
 Response: 6618601
 Conc: 154.77 ng/ml



#12 AR-1232-2

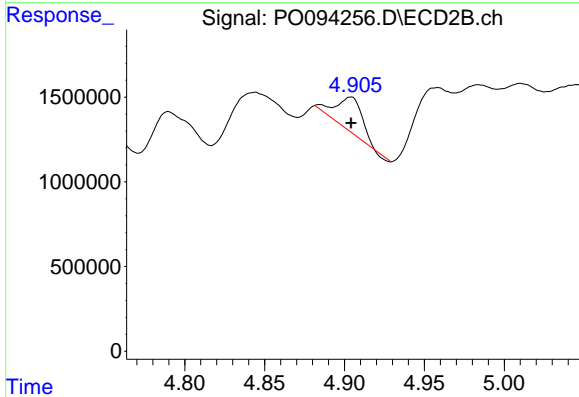
R.T.: 4.737 min
 Delta R.T.: 0.010 min
 Response: 2709966
 Conc: 102.36 ng/ml



#13 AR-1232-3

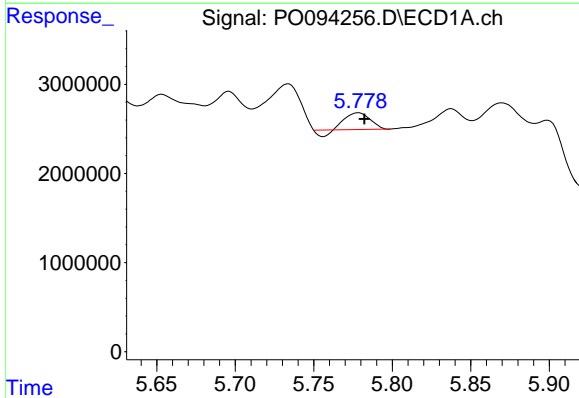
R.T.: 5.617 min
 Delta R.T.: -0.004 min
 Response: 3300708
 Conc: 44.93 ng/ml

Instrument :
 ECD_O
 ClientSampleId :



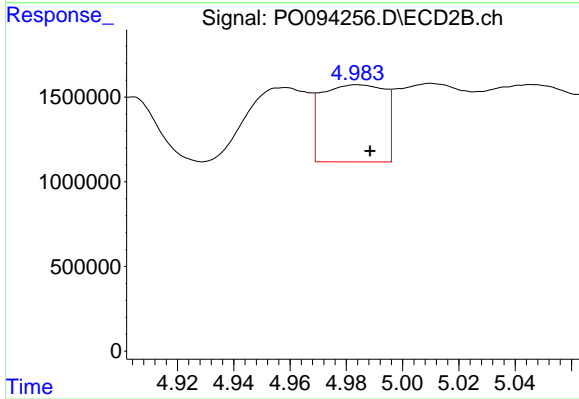
#13 AR-1232-3

R.T.: 4.904 min
 Delta R.T.: 0.000 min
 Response: 2269694
 Conc: 172.09 ng/ml



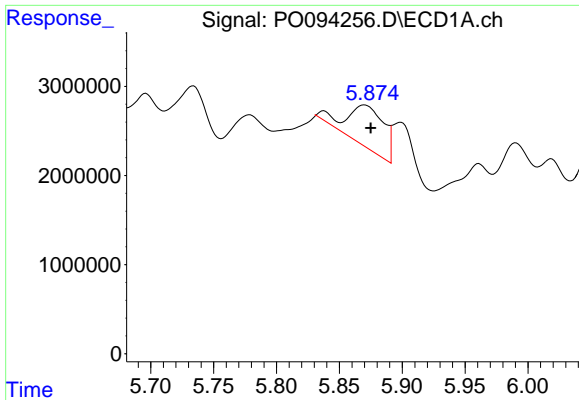
#14 AR-1232-4

R.T.: 5.778 min
 Delta R.T.: -0.004 min
 Response: 1792759
 Conc: 52.08 ng/ml



#14 AR-1232-4

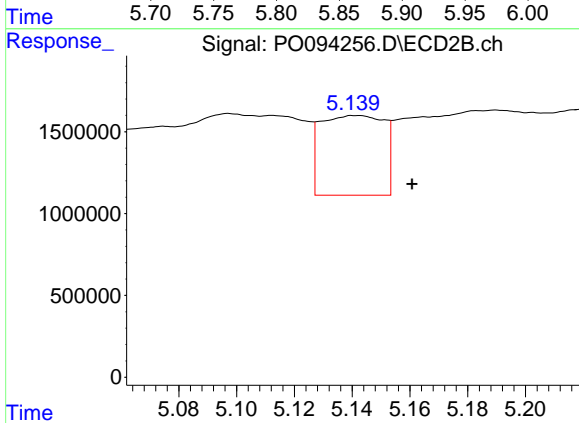
R.T.: 4.984 min
 Delta R.T.: -0.005 min
 Response: 7084006
 Conc: 498.49 ng/ml



#15 AR-1232-5

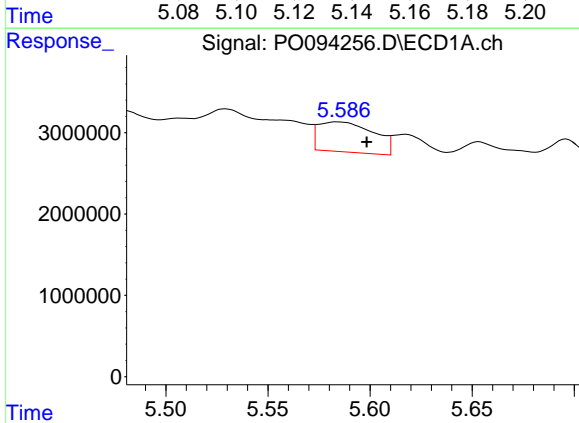
R.T.: 5.870 min
 Delta R.T.: -0.005 min
 Response: 9687807
 Conc: 305.01 ng/ml

Instrument :
 ECD_O
 ClientSampleId :



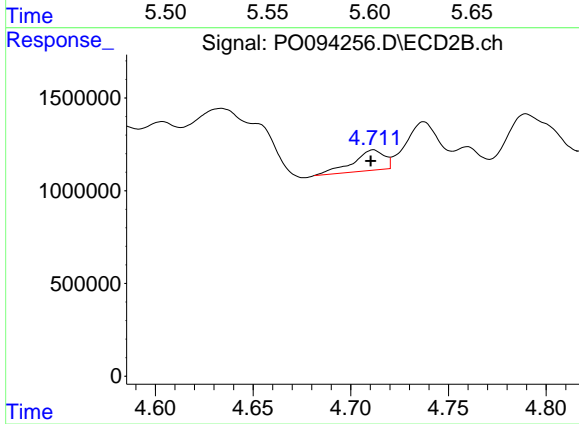
#15 AR-1232-5

R.T.: 5.142 min
 Delta R.T.: -0.019 min
 Response: 7397035
 Conc: 478.82 ng/ml



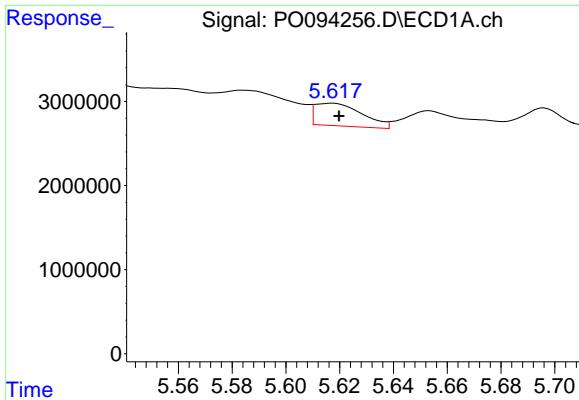
#16 AR-1242-1

R.T.: 5.585 min
 Delta R.T.: -0.014 min
 Response: 6984689
 Conc: 80.02 ng/ml



#16 AR-1242-1

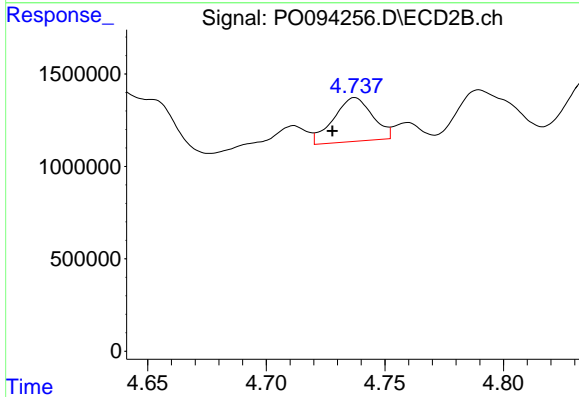
R.T.: 4.712 min
 Delta R.T.: 0.001 min
 Response: 1242185
 Conc: 40.37 ng/ml



#17 AR-1242-2

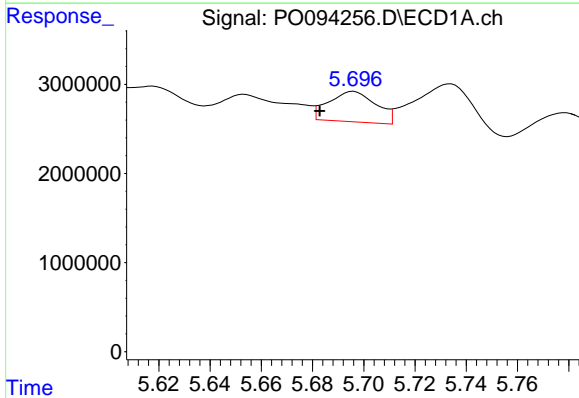
R.T.: 5.617 min
 Delta R.T.: -0.003 min
 Response: 3300708
 Conc: 24.82 ng/ml

Instrument :
 ECD_O
 ClientSampleId :



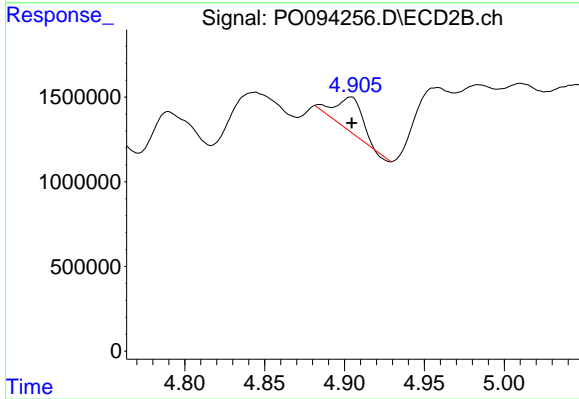
#17 AR-1242-2

R.T.: 4.737 min
 Delta R.T.: 0.009 min
 Response: 2709966
 Conc: 58.92 ng/ml



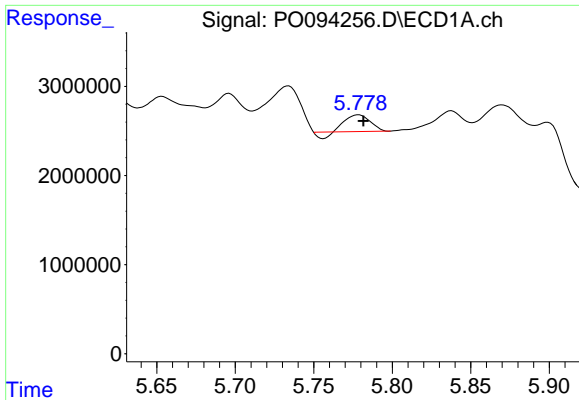
#18 AR-1242-3

R.T.: 5.696 min
 Delta R.T.: 0.013 min
 Response: 4394235
 Conc: 51.77 ng/ml



#18 AR-1242-3

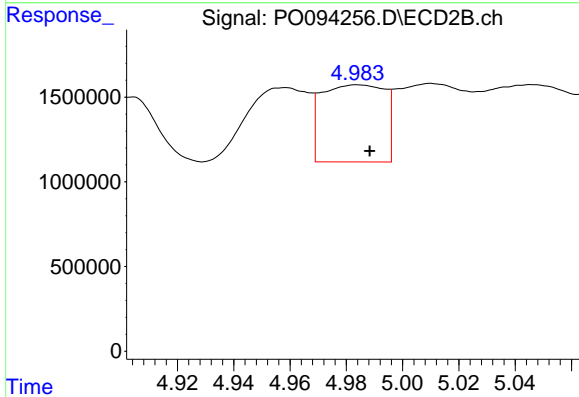
R.T.: 4.904 min
 Delta R.T.: 0.000 min
 Response: 2269694
 Conc: 93.66 ng/ml



#19 AR-1242-4

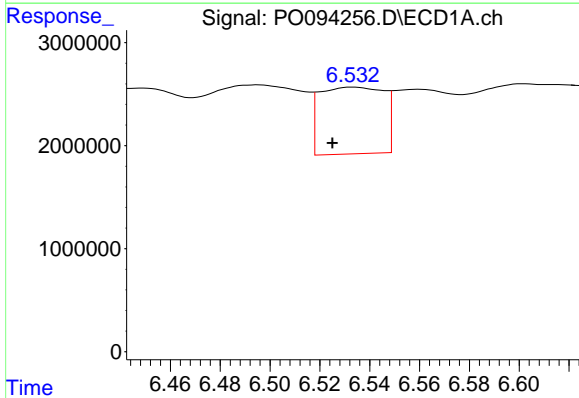
R.T.: 5.778 min
 Delta R.T.: -0.003 min
 Response: 1792759
 Conc: 28.69 ng/ml

Instrument :
 ECD_O
 ClientSampleId :



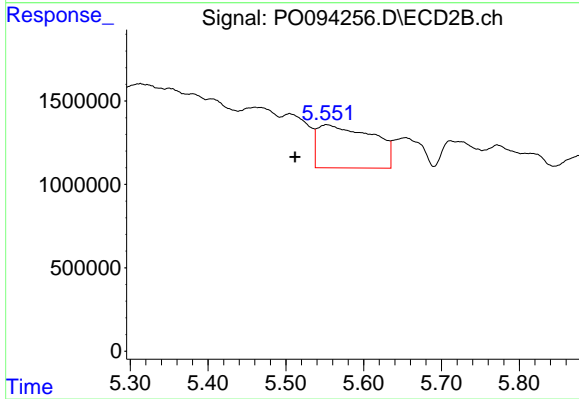
#19 AR-1242-4

R.T.: 4.984 min
 Delta R.T.: -0.004 min
 Response: 7084006
 Conc: 252.34 ng/ml



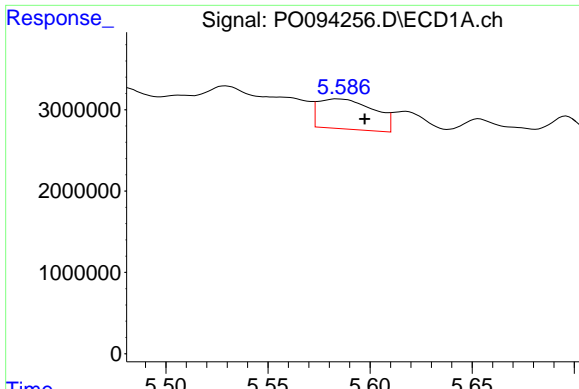
#20 AR-1242-5

R.T.: 6.533 min
 Delta R.T.: 0.008 min
 Response: 11552519
 Conc: 171.58 ng/ml



#20 AR-1242-5

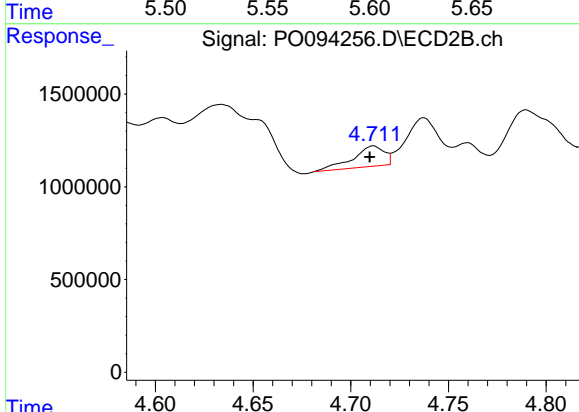
R.T.: 5.552 min
 Delta R.T.: 0.040 min
 Response: 12729835
 Conc: 446.49 ng/ml



#21 AR-1248-1

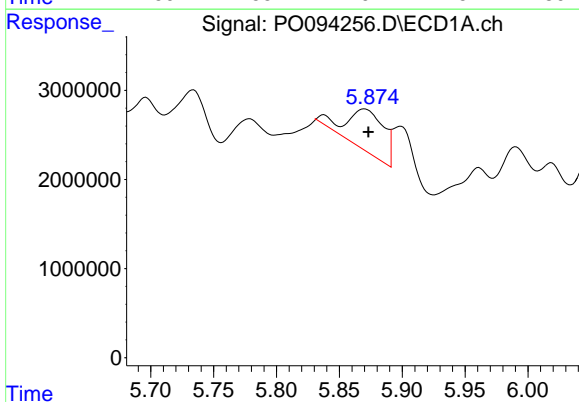
R.T.: 5.585 min
 Delta R.T.: -0.013 min
 Response: 6984689
 Conc: 103.81 ng/ml

Instrument :
 ECD_O
 ClientSampleId :



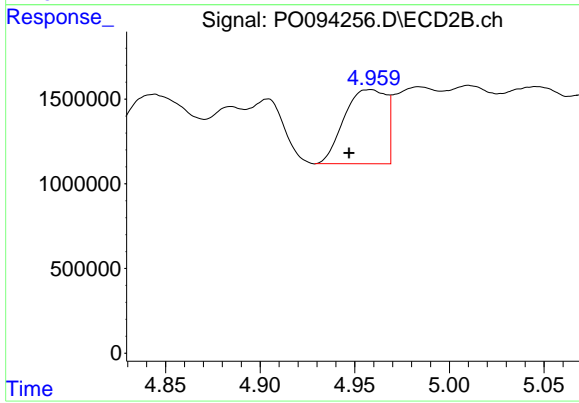
#21 AR-1248-1

R.T.: 4.712 min
 Delta R.T.: 0.002 min
 Response: 1242185
 Conc: 52.08 ng/ml



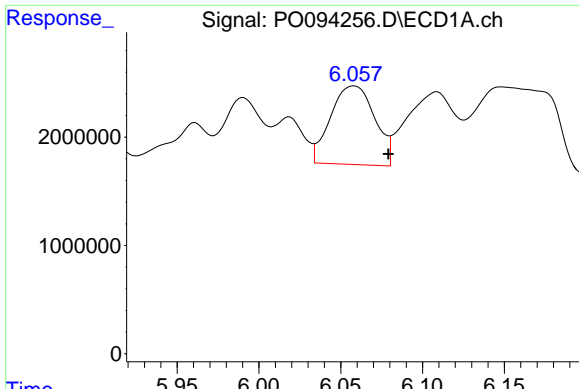
#22 AR-1248-2

R.T.: 5.870 min
 Delta R.T.: -0.003 min
 Response: 9687807
 Conc: 88.56 ng/ml



#22 AR-1248-2

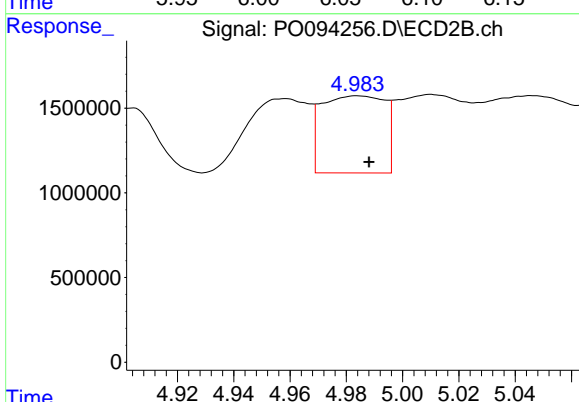
R.T.: 4.958 min
 Delta R.T.: 0.011 min
 Response: 6754600
 Conc: 169.57 ng/ml



#23 AR-1248-3

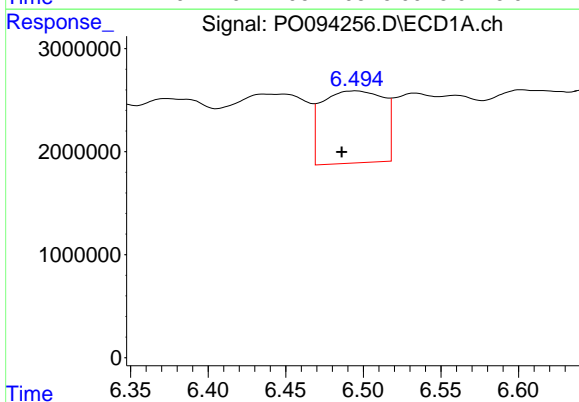
R.T.: 6.058 min
 Delta R.T.: -0.021 min
 Response: 13672706
 Conc: 113.26 ng/ml

Instrument :
 ECD_O
 ClientSampleId :



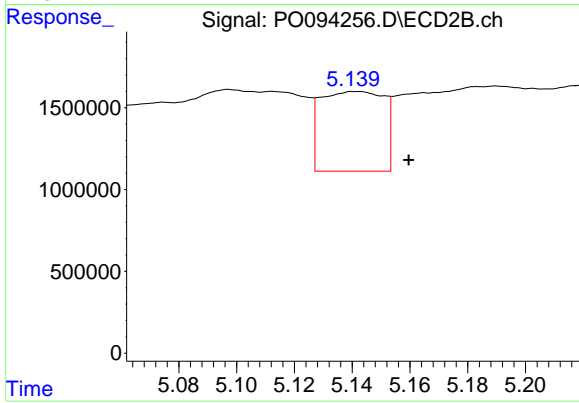
#23 AR-1248-3

R.T.: 4.984 min
 Delta R.T.: -0.004 min
 Response: 7084006
 Conc: 169.72 ng/ml



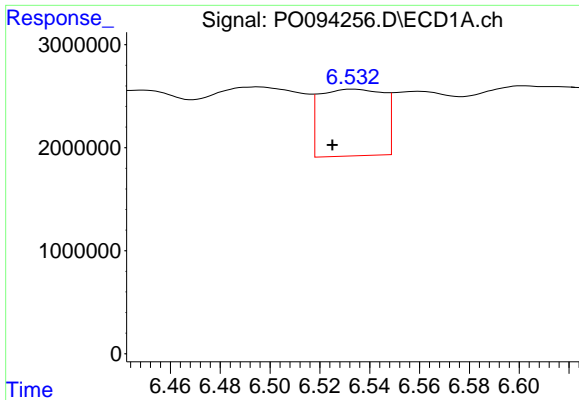
#24 AR-1248-4

R.T.: 6.495 min
 Delta R.T.: 0.009 min
 Response: 19347797
 Conc: 180.15 ng/ml



#24 AR-1248-4

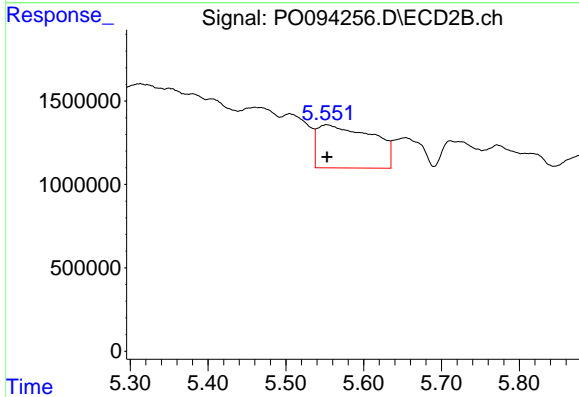
R.T.: 5.142 min
 Delta R.T.: -0.018 min
 Response: 7397035
 Conc: 157.30 ng/ml



#25 AR-1248-5

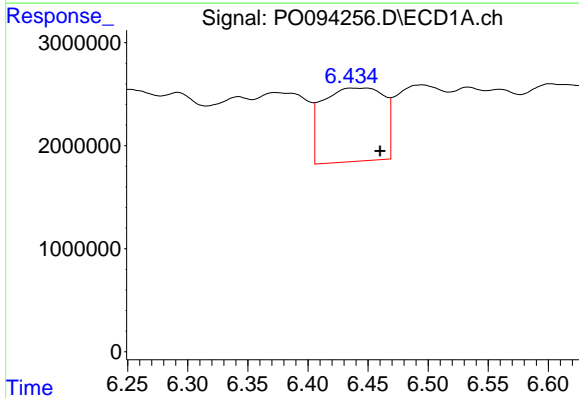
R.T.: 6.533 min
 Delta R.T.: 0.008 min
 Response: 11552519
 Conc: 99.57 ng/ml

Instrument :
 ECD_O
 ClientSampleId :



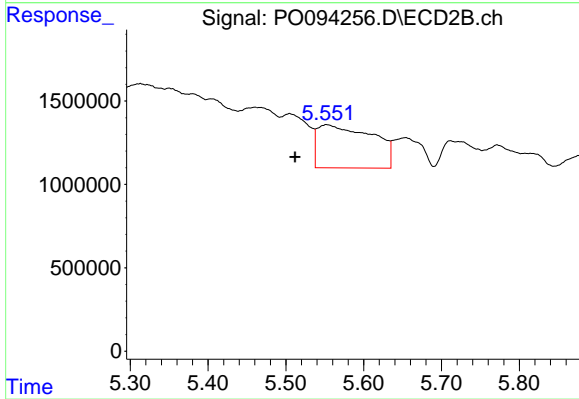
#25 AR-1248-5

R.T.: 5.552 min
 Delta R.T.: 0.000 min
 Response: 12729835
 Conc: 340.97 ng/ml



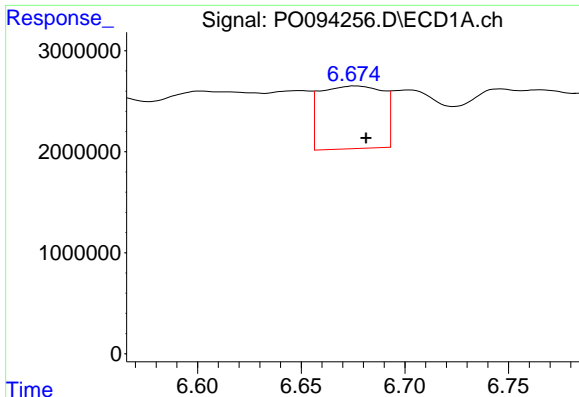
#26 AR-1254-1

R.T.: 6.437 min
 Delta R.T.: -0.023 min
 Response: 25294044
 Conc: 186.50 ng/ml



#26 AR-1254-1

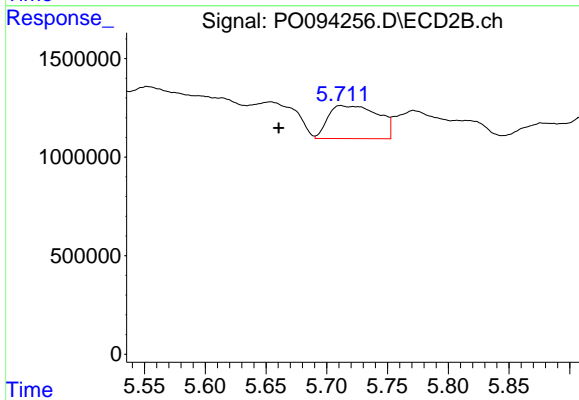
R.T.: 5.552 min
 Delta R.T.: 0.040 min
 Response: 12729835
 Conc: 186.24 ng/ml



#27 AR-1254-2

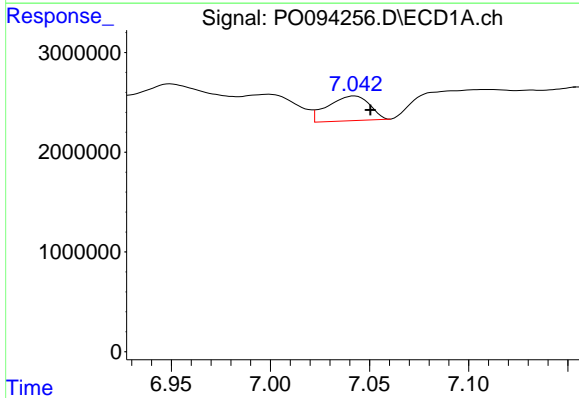
R.T.: 6.676 min
 Delta R.T.: -0.005 min
 Response: 13128108
 Conc: 67.16 ng/ml

Instrument :
 ECD_O
 ClientSampleId :



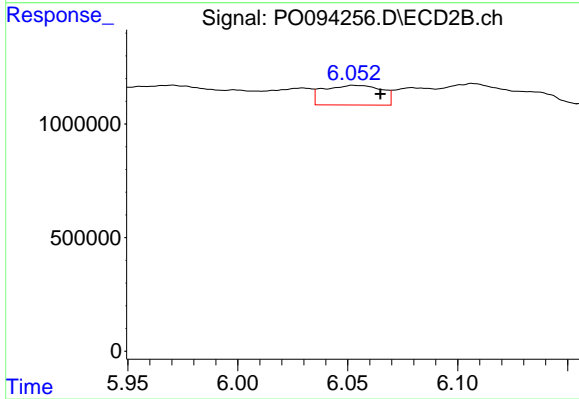
#27 AR-1254-2

R.T.: 5.711 min
 Delta R.T.: 0.051 min
 Response: 4772570
 Conc: 78.36 ng/ml



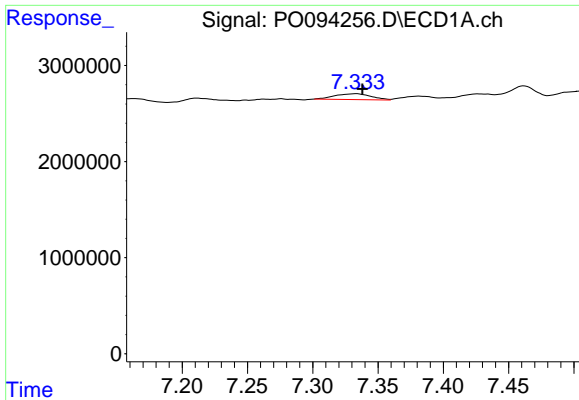
#28 AR-1254-3

R.T.: 7.042 min
 Delta R.T.: -0.008 min
 Response: 3622766
 Conc: 19.61 ng/ml



#28 AR-1254-3

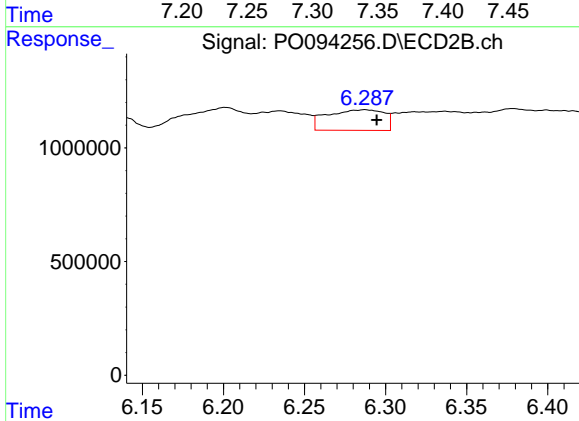
R.T.: 6.053 min
 Delta R.T.: -0.012 min
 Response: 1587556
 Conc: 17.43 ng/ml



#29 AR-1254-4

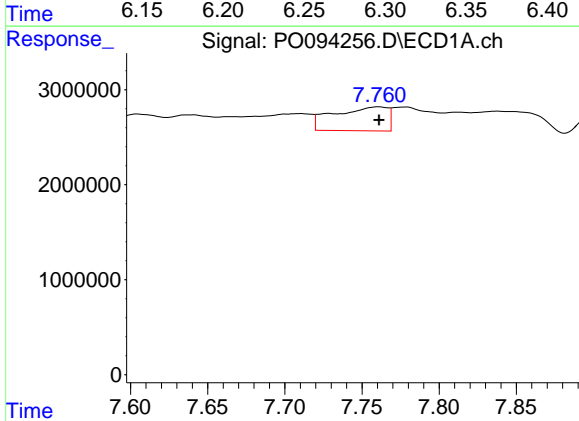
R.T.: 7.333 min
 Delta R.T.: -0.005 min
 Response: 1175191
 Conc: 11.59 ng/ml

Instrument :
 ECD_O
 ClientSampleId :



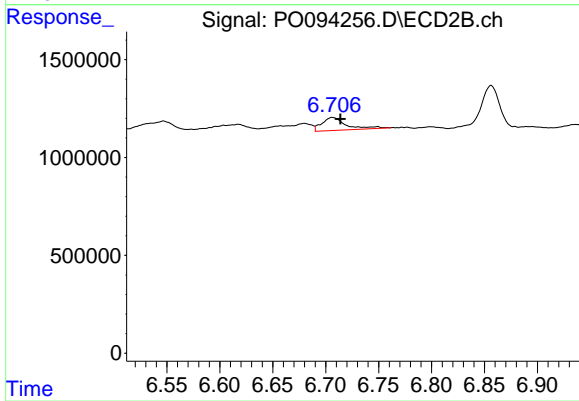
#29 AR-1254-4

R.T.: 6.287 min
 Delta R.T.: -0.007 min
 Response: 2221036
 Conc: 52.14 ng/ml



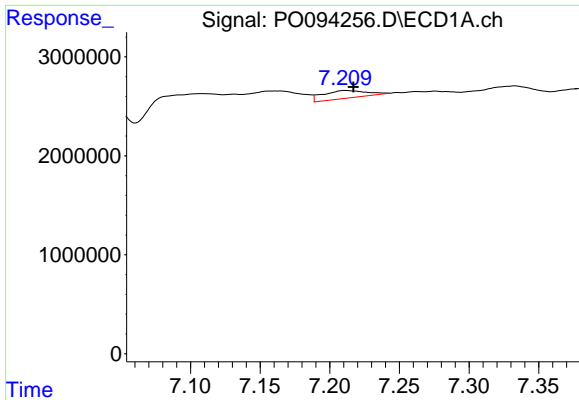
#30 AR-1254-5

R.T.: 7.761 min
 Delta R.T.: 0.000 min
 Response: 6102791
 Conc: 45.00 ng/ml



#30 AR-1254-5

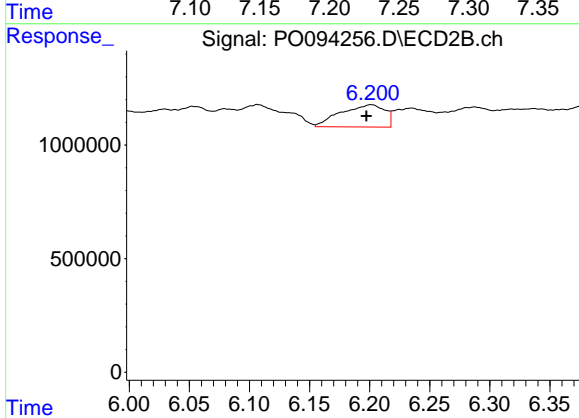
R.T.: 6.707 min
 Delta R.T.: -0.007 min
 Response: 1048156
 Conc: 14.53 ng/ml



#31 AR-1260-1

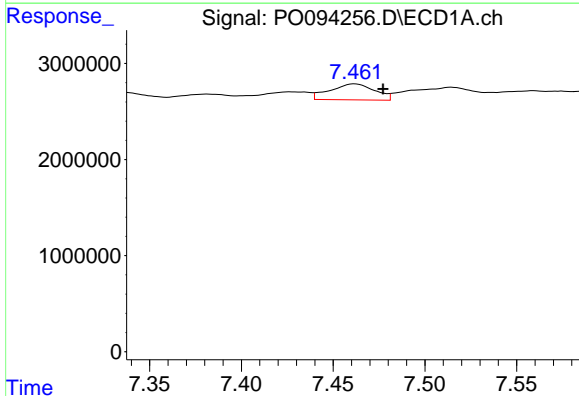
R.T.: 7.212 min
 Delta R.T.: -0.005 min
 Response: 1701851
 Conc: 11.66 ng/ml

Instrument :
 ECD_O
 ClientSampleId :



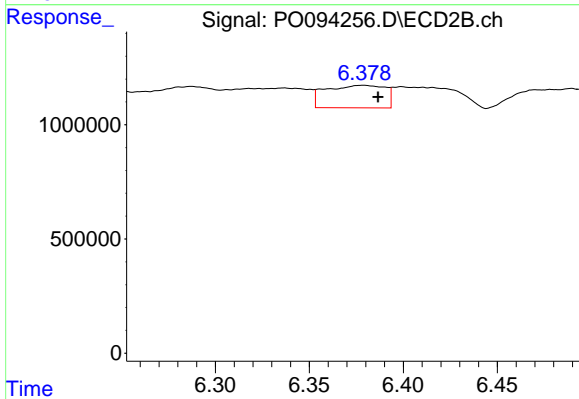
#31 AR-1260-1

R.T.: 6.201 min
 Delta R.T.: 0.004 min
 Response: 2511859
 Conc: 38.52 ng/ml



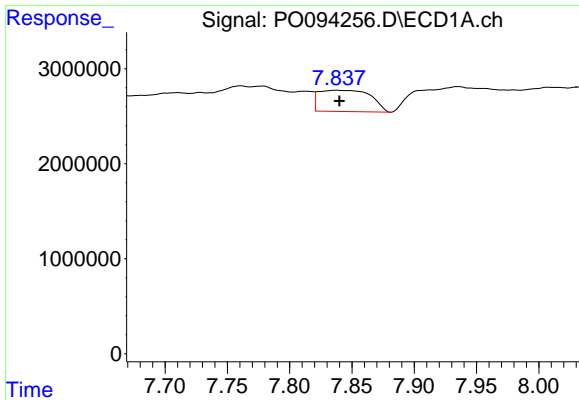
#32 AR-1260-2

R.T.: 7.462 min
 Delta R.T.: -0.015 min
 Response: 2815681
 Conc: 17.59 ng/ml



#32 AR-1260-2

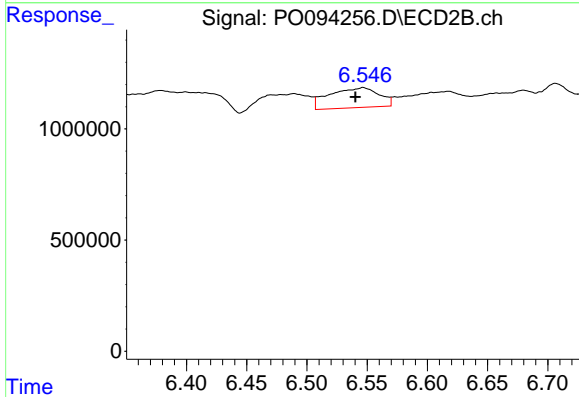
R.T.: 6.378 min
 Delta R.T.: -0.008 min
 Response: 2170799
 Conc: 29.89 ng/ml



#33 AR-1260-3

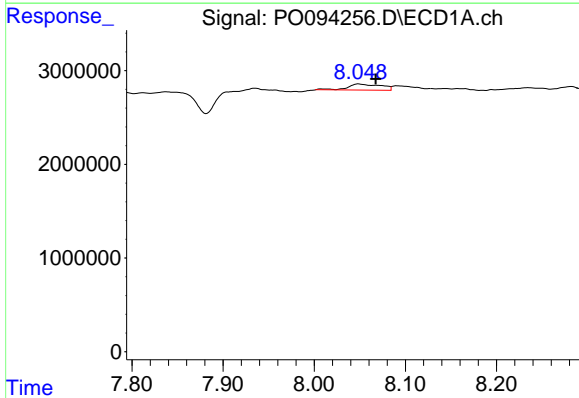
R.T.: 7.838 min
 Delta R.T.: -0.002 min
 Response: 6483493
 Conc: 48.83 ng/ml

Instrument :
 ECD_O
 ClientSampleId :



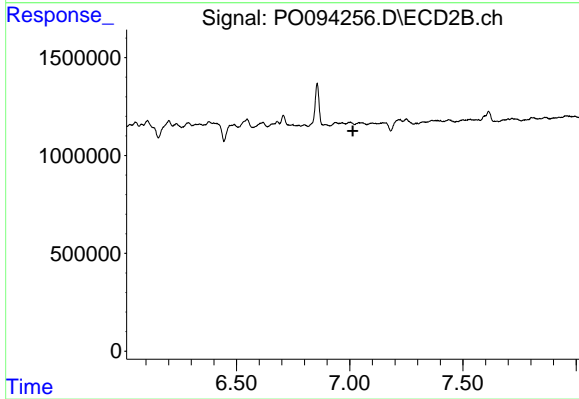
#33 AR-1260-3

R.T.: 6.547 min
 Delta R.T.: 0.006 min
 Response: 2557343
 Conc: 35.24 ng/ml



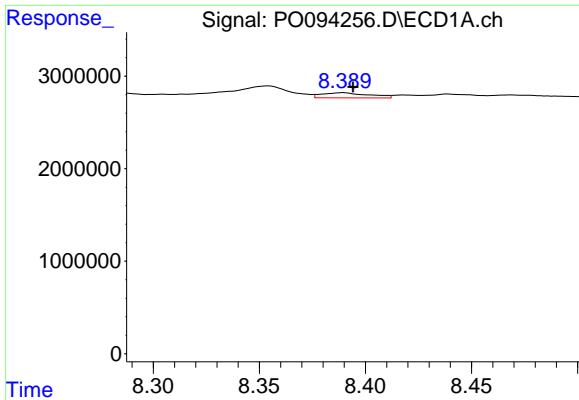
#34 AR-1260-4

R.T.: 8.049 min
 Delta R.T.: -0.018 min
 Response: 1584569
 Conc: 11.50 ng/ml



#34 AR-1260-4

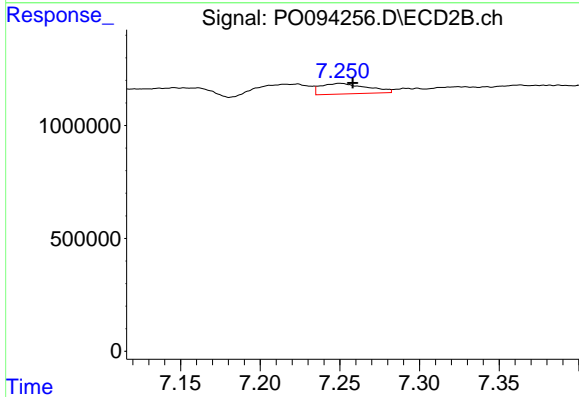
R.T.: 0.000 min
 Exp R.T. : 7.014 min
 Response: 0
 Conc: N.D.



#35 AR-1260-5

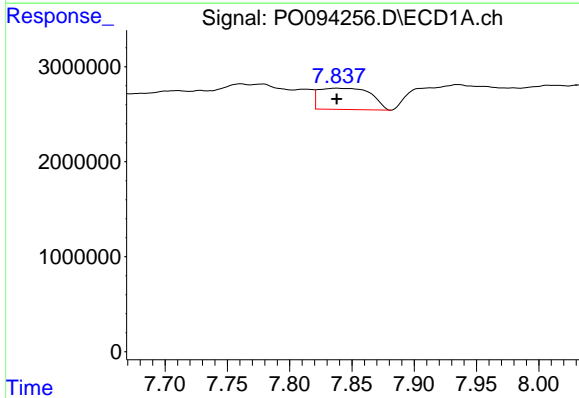
R.T.: 8.389 min
 Delta R.T.: -0.005 min
 Response: 861819
 Conc: 3.96 ng/ml

Instrument :
 ECD_O
 ClientSampleId :



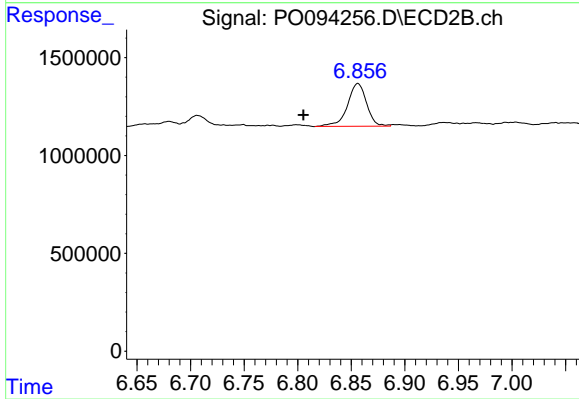
#35 AR-1260-5

R.T.: 7.250 min
 Delta R.T.: -0.008 min
 Response: 937792
 Conc: 9.04 ng/ml



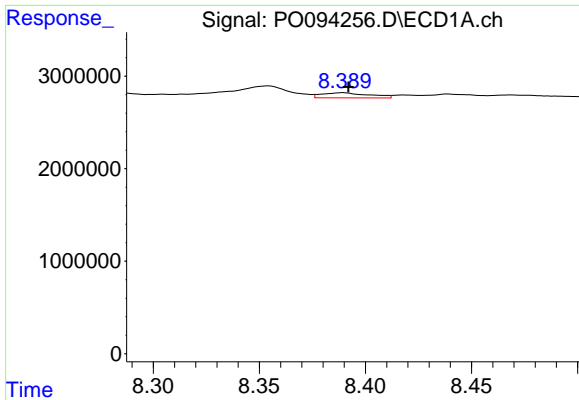
#36 AR-1262-1

R.T.: 7.838 min
 Delta R.T.: 0.000 min
 Response: 6483493
 Conc: 37.95 ng/ml



#36 AR-1262-1

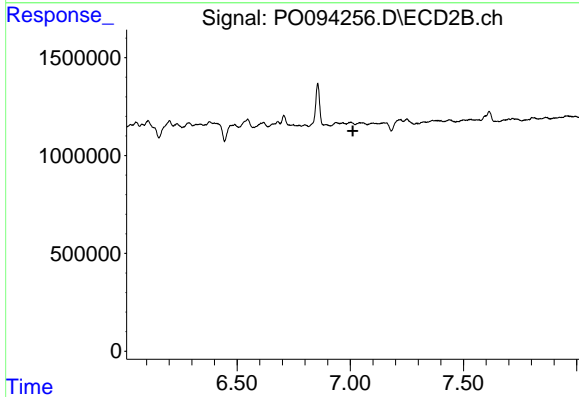
R.T.: 6.856 min
 Delta R.T.: 0.051 min
 Response: 2715617
 Conc: 77.62 ng/ml



#37 AR-1262-2

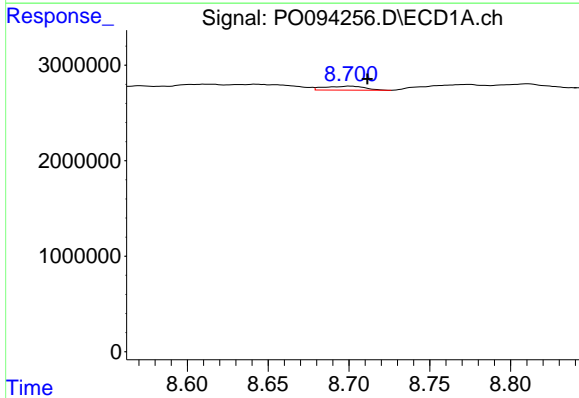
R.T.: 8.389 min
 Delta R.T.: -0.003 min
 Response: 861819
 Conc: 3.71 ng/ml

Instrument :
 ECD_O
 ClientSampleId :



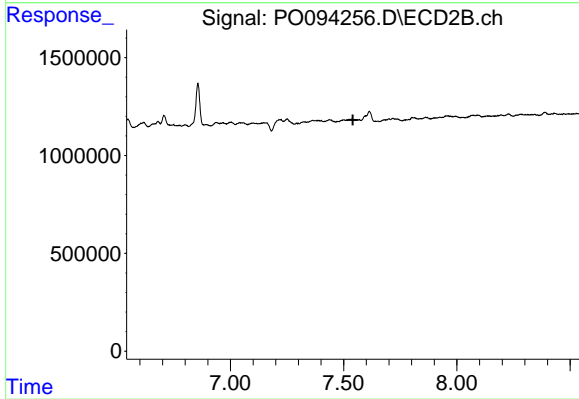
#37 AR-1262-2

R.T.: 0.000 min
 Exp R.T. : 7.012 min
 Response: 0
 Conc: N.D.



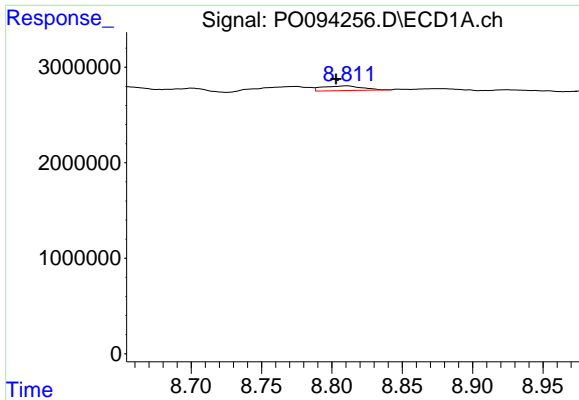
#38 AR-1262-3

R.T.: 8.701 min
 Delta R.T.: -0.011 min
 Response: 712140
 Conc: 4.35 ng/ml



#38 AR-1262-3

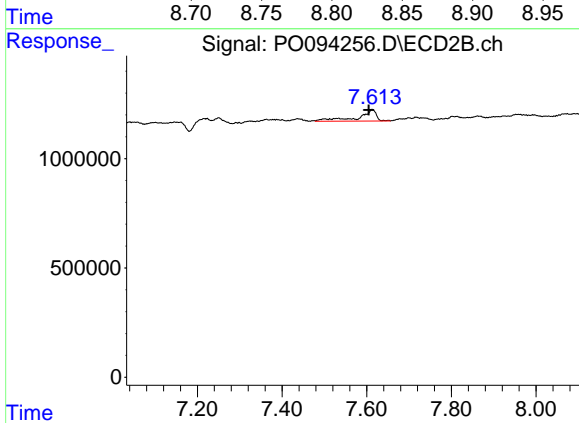
R.T.: 0.000 min
 Exp R.T. : 7.541 min
 Response: 0
 Conc: N.D.



#39 AR-1262-4

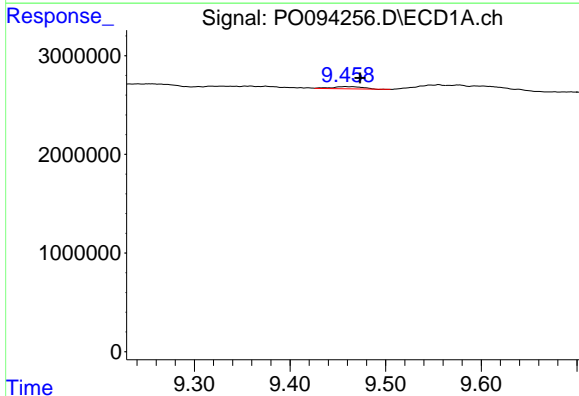
R.T.: 8.810 min
 Delta R.T.: 0.007 min
 Response: 958697
 Conc: 9.57 ng/ml

Instrument :
 ECD_O
 ClientSampleId :



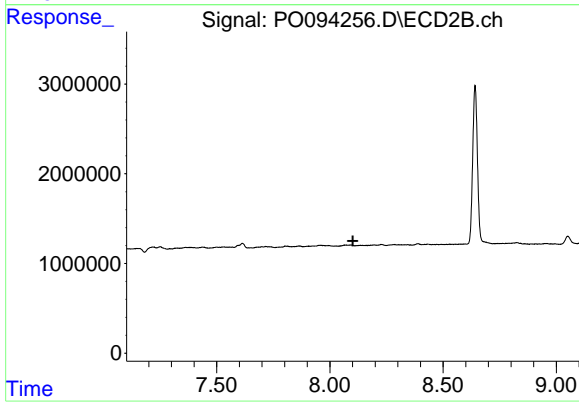
#39 AR-1262-4

R.T.: 7.613 min
 Delta R.T.: 0.008 min
 Response: 1535704
 Conc: 18.52 ng/ml



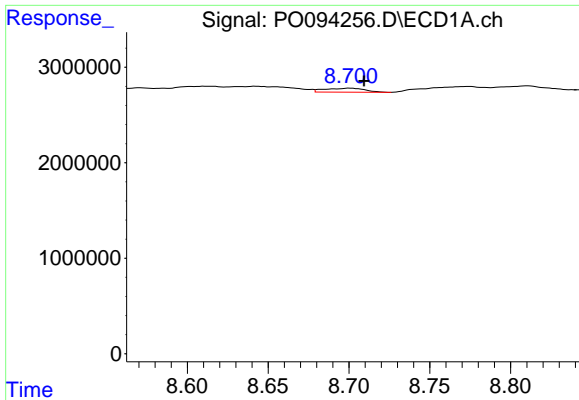
#40 AR-1262-5

R.T.: 9.458 min
 Delta R.T.: -0.015 min
 Response: 478659
 Conc: 5.95 ng/ml



#40 AR-1262-5

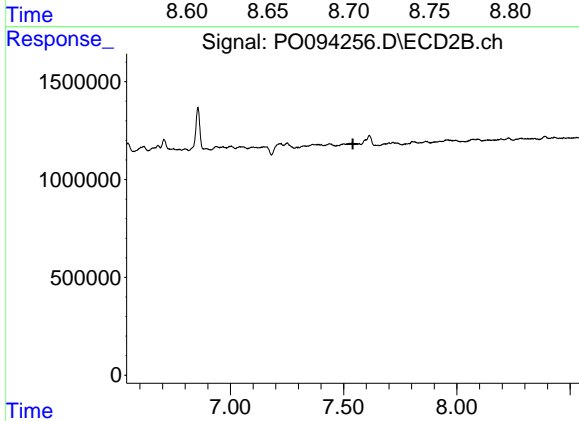
R.T.: 0.000 min
 Exp R.T. : 8.102 min
 Response: 0
 Conc: N.D.



#41 AR-1268-1

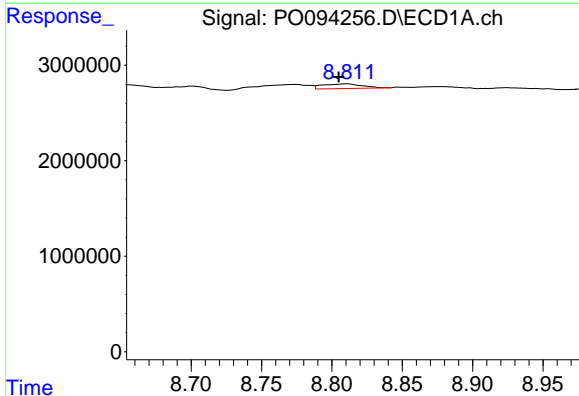
R.T.: 8.701 min
 Delta R.T.: -0.009 min
 Response: 712140
 Conc: 2.12 ng/ml

Instrument :
 ECD_O
 ClientSampleId :



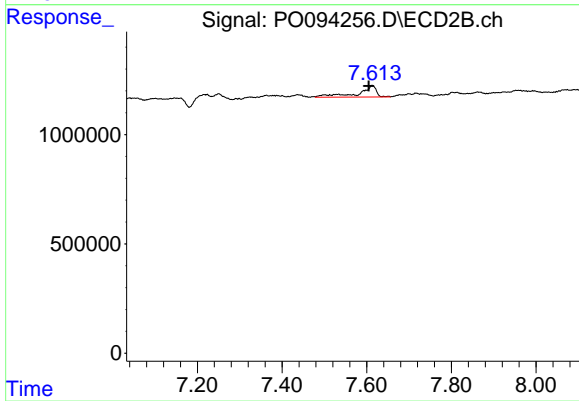
#41 AR-1268-1

R.T.: 0.000 min
 Exp R.T. : 7.540 min
 Response: 0
 Conc: N.D.



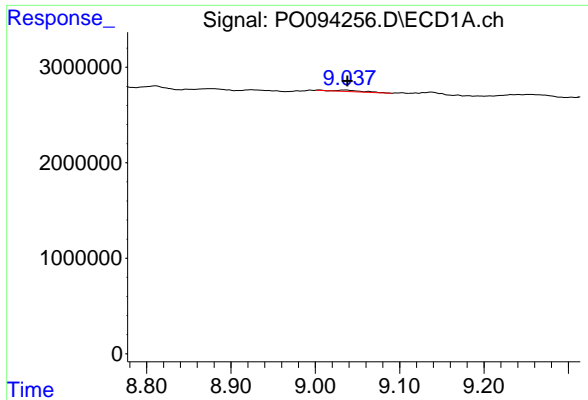
#42 AR-1268-2

R.T.: 8.810 min
 Delta R.T.: 0.005 min
 Response: 958697
 Conc: 2.98 ng/ml



#42 AR-1268-2

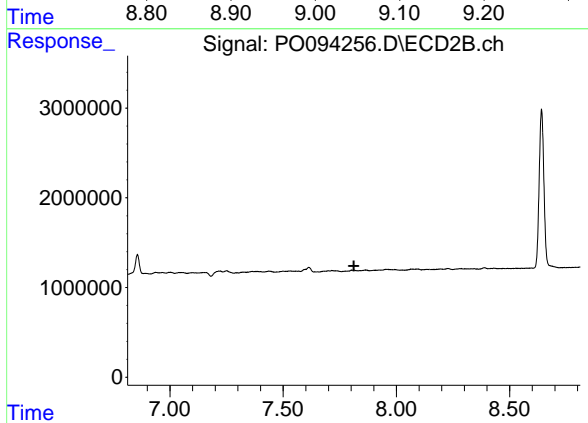
R.T.: 7.613 min
 Delta R.T.: 0.008 min
 Response: 1535704
 Conc: 11.30 ng/ml



#43 AR-1268-3

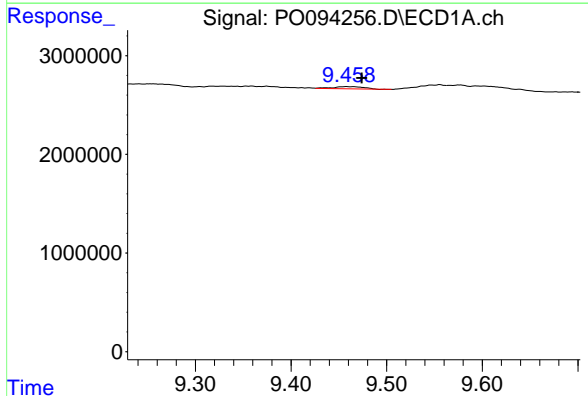
R.T.: 9.035 min
 Delta R.T.: -0.003 min
 Response: 301388
 Conc: 1.06 ng/ml

Instrument :
 ECD_O
 ClientSampleId :



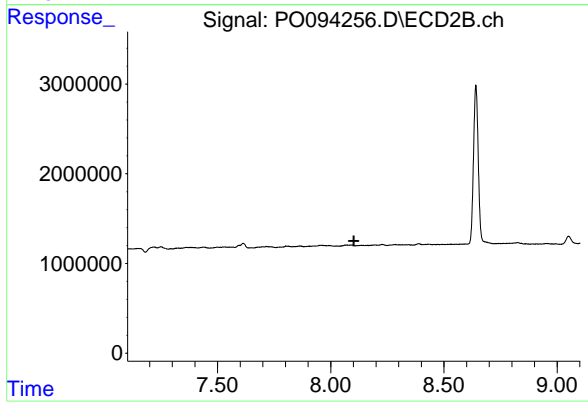
#43 AR-1268-3

R.T.: 0.000 min
 Exp R.T. : 7.812 min
 Response: 0
 Conc: N.D.



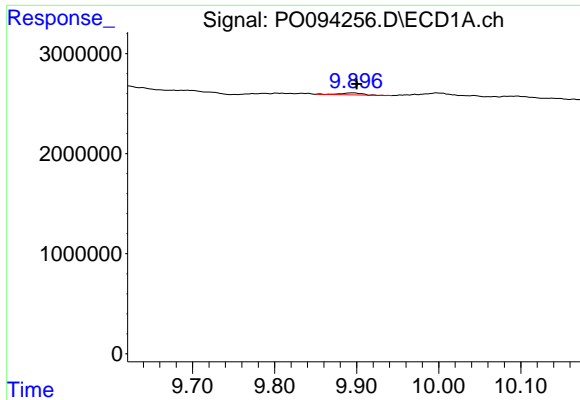
#44 AR-1268-4

R.T.: 9.458 min
 Delta R.T.: -0.015 min
 Response: 478659
 Conc: 4.95 ng/ml



#44 AR-1268-4

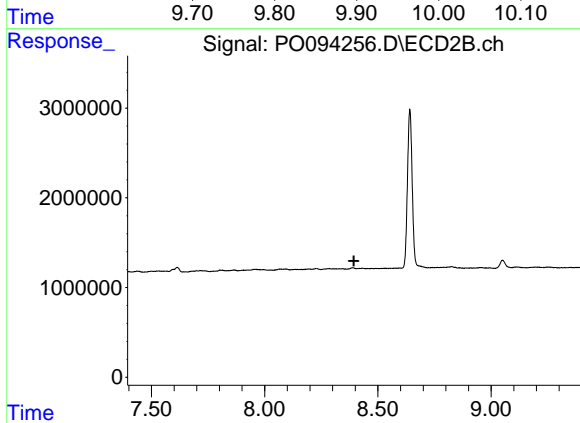
R.T.: 0.000 min
 Exp R.T. : 8.102 min
 Response: 0
 Conc: N.D.



#45 AR-1268-5

R.T.: 9.895 min
 Delta R.T.: -0.004 min
 Response: 368410
 Conc: 0.44 ng/ml

Instrument :
 ECD_O
 ClientSampleId :



#45 AR-1268-5

R.T.: 0.000 min
 Exp R.T. : 8.394 min
 Response: 0
 Conc: N.D.