

Data Path : Z:\pestpcbsrv\HPCHEM1\ECD\_O\Data\P0041425\  
 Data File : P0110411.D  
 Signal(s) : Signal #1: ECD1A.ch Signal #2: ECD2B.ch  
 Acq On : 14 Apr 2025 13:44  
 Operator : YP/AJ  
 Sample : PB167575BL  
 Misc :  
 ALS Vial : 9 Sample Multiplier: 1

Instrument :  
 ECD\_O  
 ClientSampleId :  
 PB167575BL

Integration File signal 1: autoint1.e  
 Integration File signal 2: autoint2.e  
 Quant Time: Apr 14 14:06:58 2025  
 Quant Method : Z:\pestpcbsrv\HPCHEM1\ECD\_O\methods\P0041025.M  
 Quant Title : GC EXTRACTABLES  
 QLast Update : Fri Apr 11 02:12:41 2025  
 Response via : Initial Calibration  
 Integrator: ChemStation

Volume Inj. : 2 µl  
 Signal #1 Phase : ZB-MR1 Signal #2 Phase: ZB-MR2  
 Signal #1 Info : 30Mx0.32mmx 0.50µ Signal #2 Info : 30M x 0.32mm x 0.25µm

Compound	RT#1	RT#2	Resp#1	Resp#2	ng/ml	ng/ml
-----						
System Monitoring Compounds						
1) SA Tetrachlo...	3.687	3.683	177.8E6	98513431	20.326	19.743
2) SA Decachlor...	8.734	8.684	166.5E6	40493532	21.095	21.036

Target Compounds

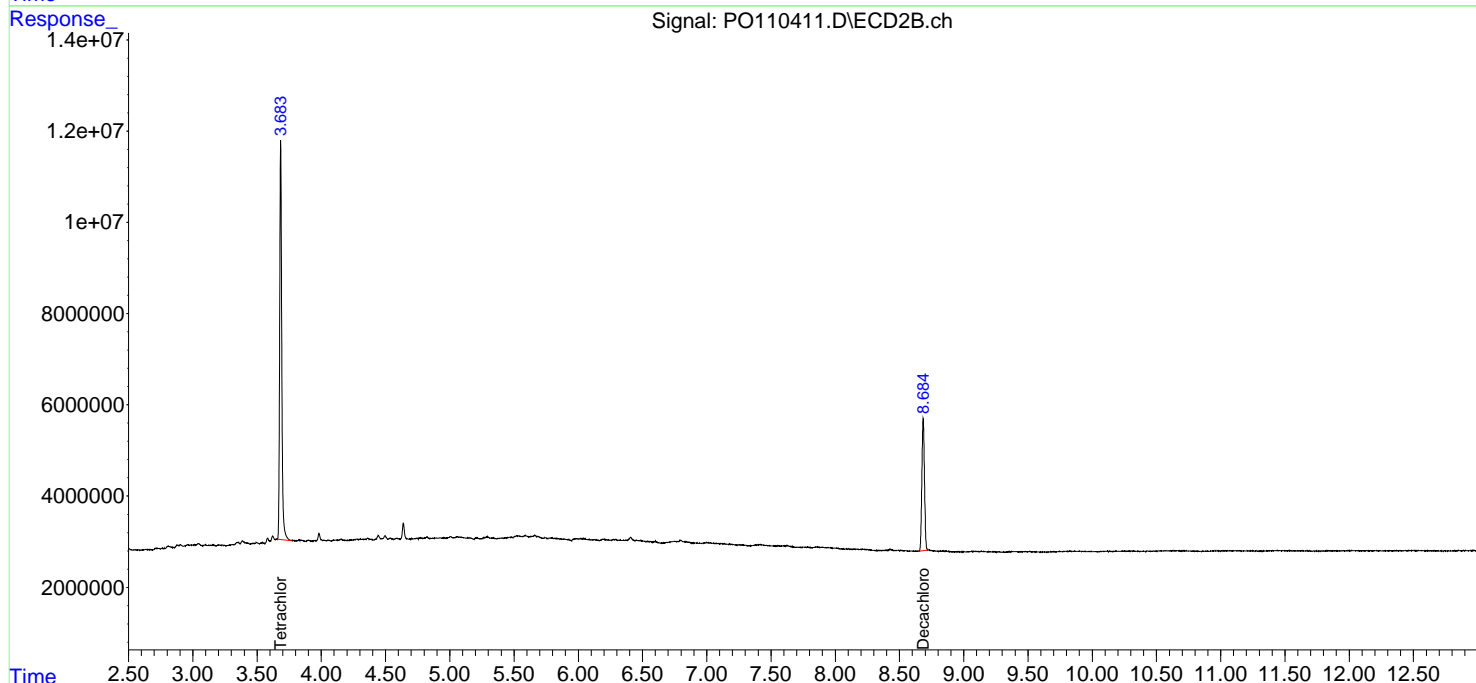
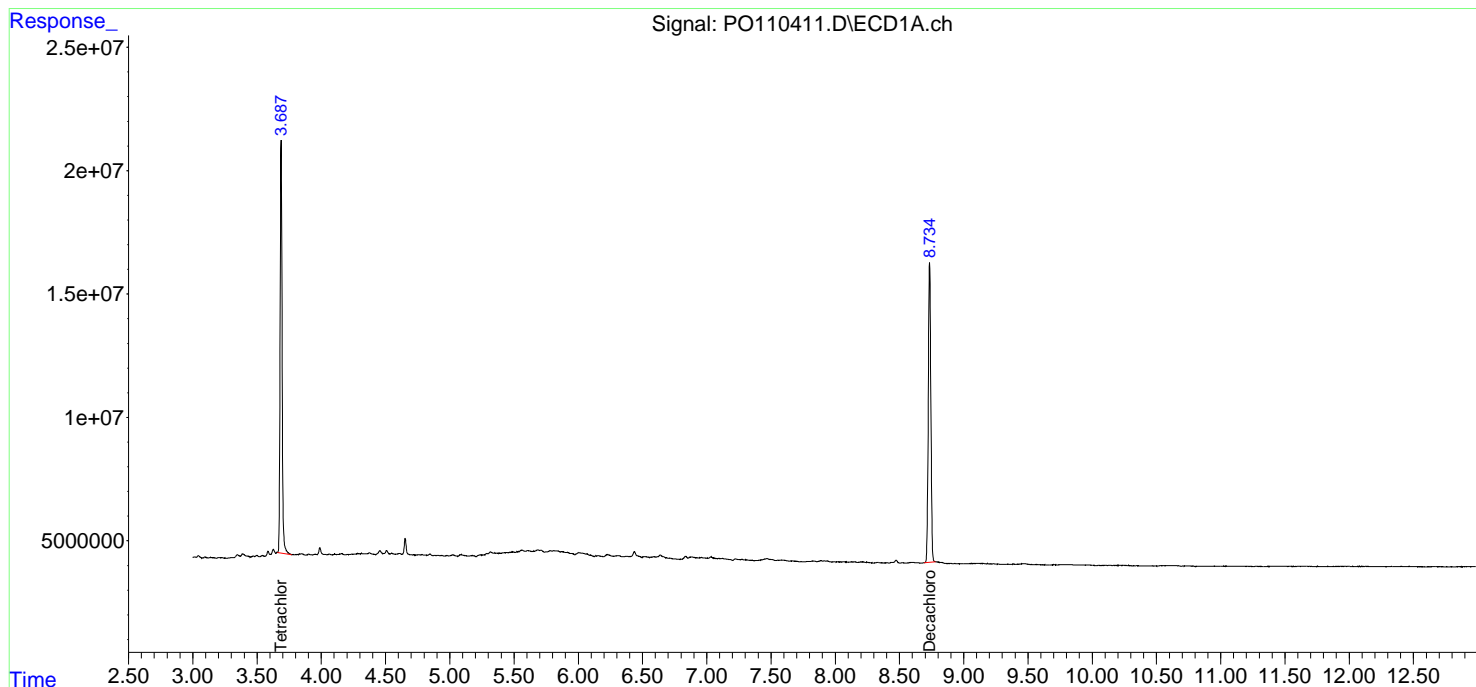
(f)=RT Delta > 1/2 Window (#)=Amounts differ by > 25% (m)=manual int.

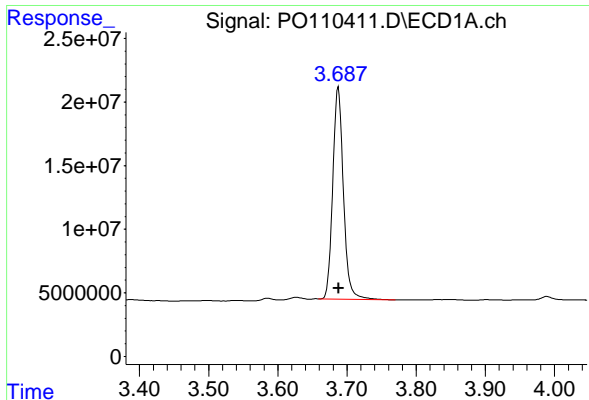
Data Path : Z:\pestpcbsrv\HPCHEM1\ECD\_O\Data\PO041425\  
 Data File : PO110411.D  
 Signal(s) : Signal #1: ECD1A.ch Signal #2: ECD2B.ch  
 Acq On : 14 Apr 2025 13:44  
 Operator : YP/AJ  
 Sample : PB167575BL  
 Misc :  
 ALS Vial : 9 Sample Multiplier: 1

Instrument :  
 ECD\_O  
 ClientSampleId :  
 PB167575BL

Integration File signal 1: autoint1.e  
 Integration File signal 2: autoint2.e  
 Quant Time: Apr 14 14:06:58 2025  
 Quant Method : Z:\pestpcbsrv\HPCHEM1\ECD\_O\methods\PO041025.M  
 Quant Title : GC EXTRACTABLES  
 QLast Update : Fri Apr 11 02:12:41 2025  
 Response via : Initial Calibration  
 Integrator: ChemStation

Volume Inj. : 2 µl  
 Signal #1 Phase : ZB-MR1 Signal #2 Phase: ZB-MR2  
 Signal #1 Info : 30Mx0.32mmx 0.50µ Signal #2 Info : 30M x 0.32mm x 0.25µm

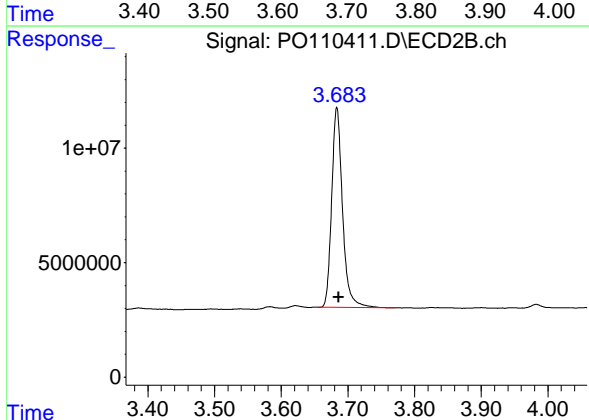




#1 Tetrachloro-m-xylene

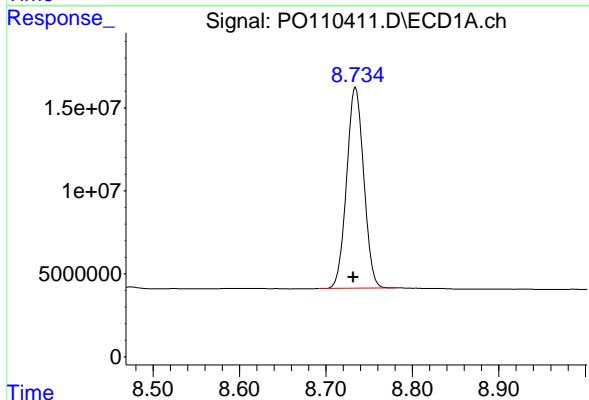
R.T.: 3.687 min  
 Delta R.T.: 0.000 min  
 Response: 177834112  
 Conc: 20.33 ng/ml

Instrument :  
 ECD\_O  
 ClientSampleId :  
 PB167575BL



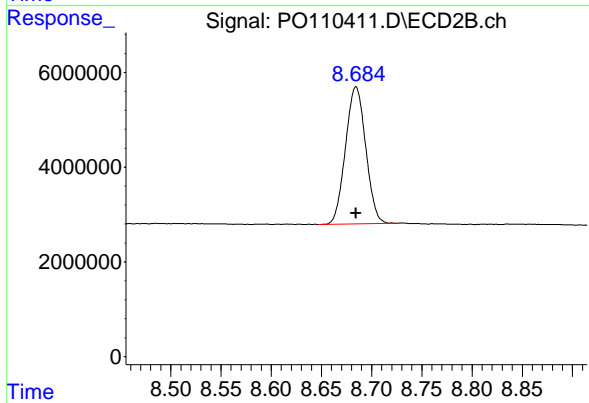
#1 Tetrachloro-m-xylene

R.T.: 3.683 min  
 Delta R.T.: -0.002 min  
 Response: 98513431  
 Conc: 19.74 ng/ml



#2 Decachlorobiphenyl

R.T.: 8.734 min  
 Delta R.T.: 0.003 min  
 Response: 166540700  
 Conc: 21.09 ng/ml



#2 Decachlorobiphenyl

R.T.: 8.684 min  
 Delta R.T.: 0.000 min  
 Response: 40493532  
 Conc: 21.04 ng/ml