

Data Path : Z:\pestpcbsrv\HPCHEM1\ECD_O\Data\P0041425\
 Data File : P0110420.D
 Signal(s) : Signal #1: ECD1A.ch Signal #2: ECD2B.ch
 Acq On : 14 Apr 2025 18:17
 Operator : YP/AJ
 Sample : AR1242CCC500
 Misc :
 ALS Vial : 4 Sample Multiplier: 1

Instrument :
 ECD_O
ClientSampleId :
 AR1242CCC500

Integration File signal 1: autoint1.e
 Integration File signal 2: autoint2.e
 Quant Time: Apr 14 23:54:35 2025
 Quant Method : Z:\pestpcbsrv\HPCHEM1\ECD_O\methods\P0041025.M
 Quant Title : GC EXTRACTABLES
 QLast Update : Fri Apr 11 02:12:41 2025
 Response via : Initial Calibration
 Integrator: ChemStation

Volume Inj. : 2 µl
 Signal #1 Phase : ZB-MR1 Signal #2 Phase: ZB-MR2
 Signal #1 Info : 30Mx0.32mmx 0.50µ Signal #2 Info : 30M x 0.32mm x 0.25µm

Compound	RT#1	RT#2	Resp#1	Resp#2	ng/ml	ng/ml

System Monitoring Compounds						
1) SA Tetrachlo...	3.689	3.686	478.9E6	272.0E6	54.740	54.515
2) SA Decachlor...	8.735	8.688	264.2E6	74773033	33.462	38.843
Target Compounds						
16) L4 AR-1242-1	4.781	4.767	154.4E6	81101147	556.387	542.473
17) L4 AR-1242-2	4.800	4.786	211.4E6	114.1E6	548.010	534.740
18) L4 AR-1242-3	4.856	4.961	148.4E6	62146156	533.455	537.679
19) L4 AR-1242-4	4.977	5.045	116.8E6	62980256	552.552	524.402
20) L4 AR-1242-5	5.630	5.567	128.7E6	77900368	568.541	536.885

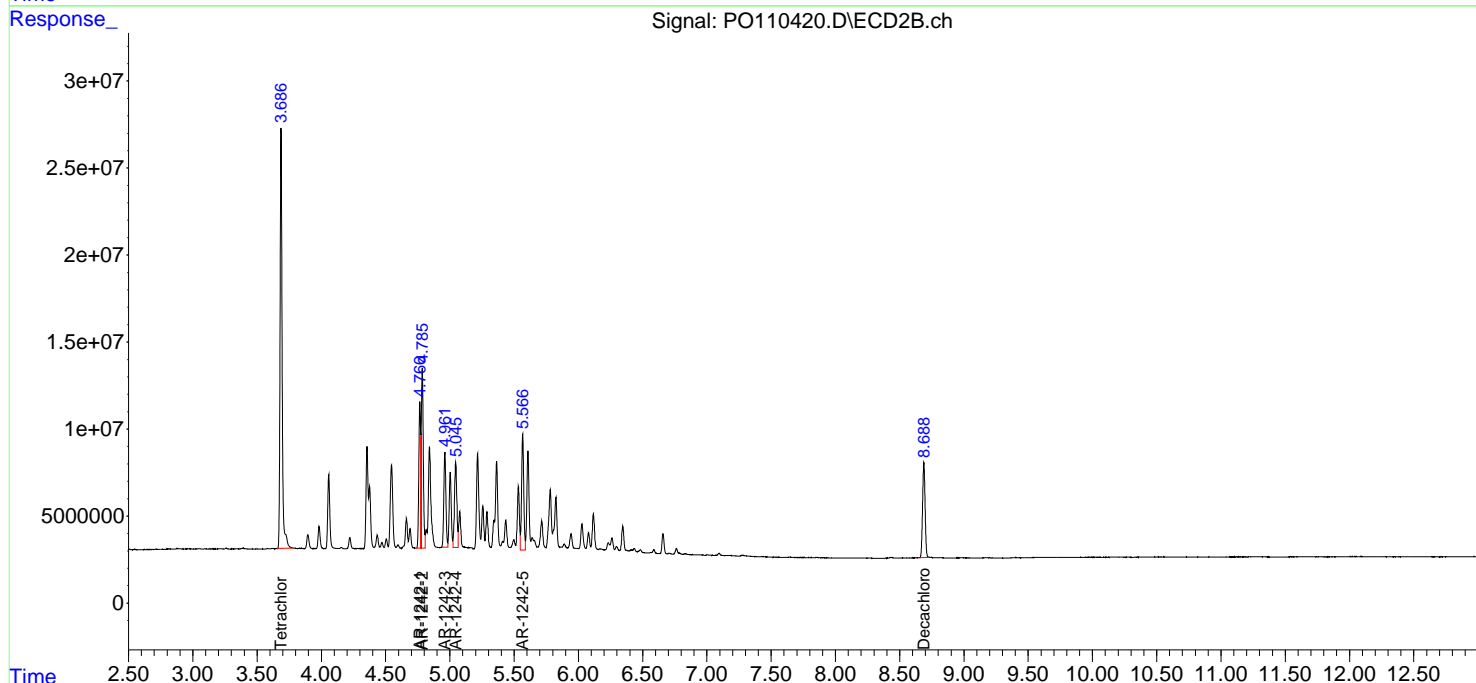
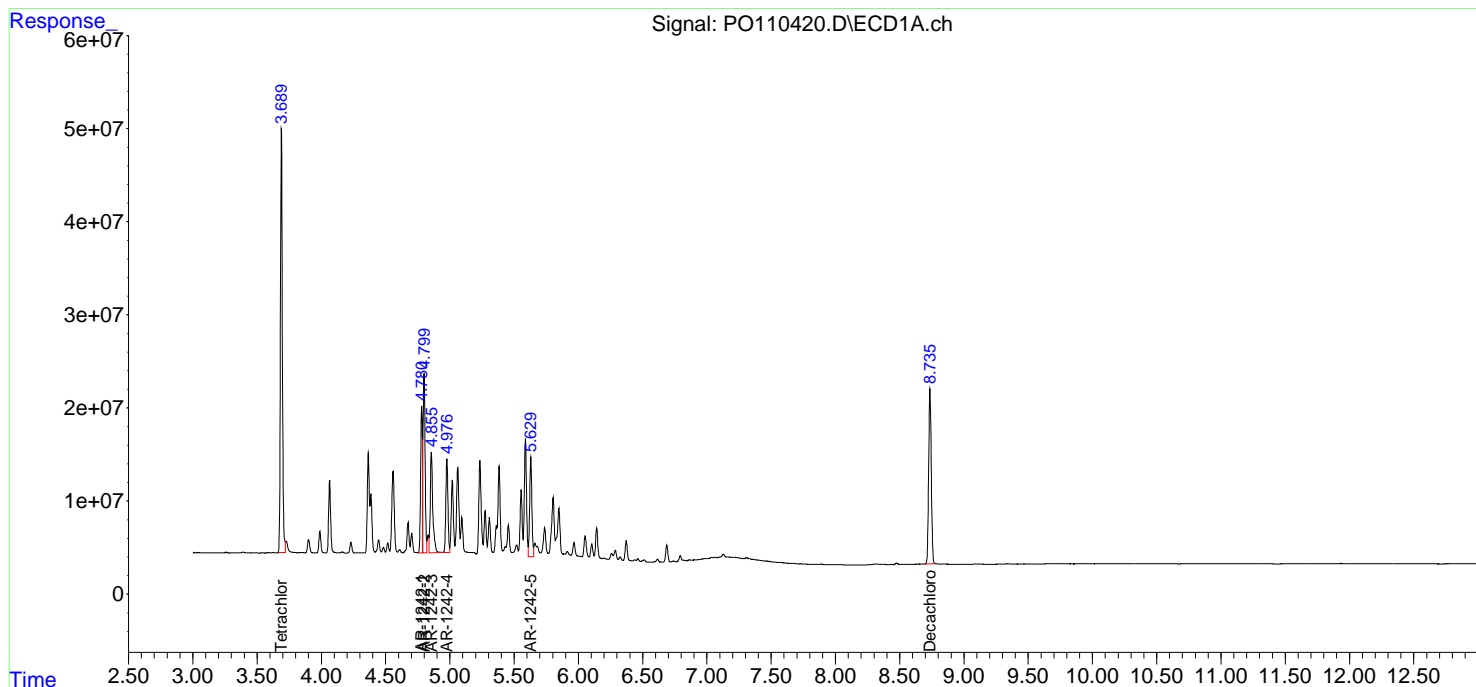
(f)=RT Delta > 1/2 Window (#)=Amounts differ by > 25% (m)=manual int.

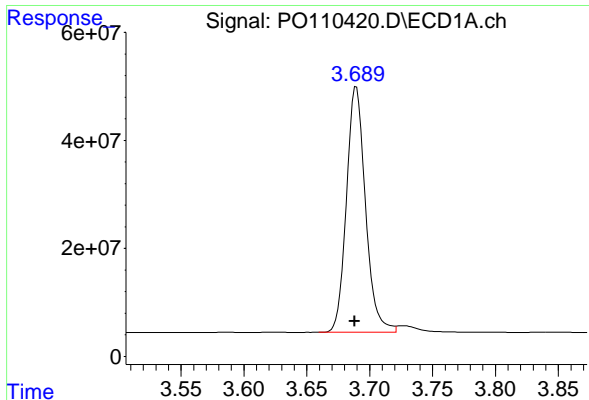
Data Path : Z:\pestpcbsrv\HPCHEM1\ECD_O\Data\PO041425\
 Data File : PO110420.D
 Signal(s) : Signal #1: ECD1A.ch Signal #2: ECD2B.ch
 Acq On : 14 Apr 2025 18:17
 Operator : YP/AJ
 Sample : AR1242CCC500
 Misc :
 ALS Vial : 4 Sample Multiplier: 1

Instrument :
 ECD_O
 ClientSampleId :
 AR1242CCC500

Integration File signal 1: autoint1.e
 Integration File signal 2: autoint2.e
 Quant Time: Apr 14 23:54:35 2025
 Quant Method : Z:\pestpcbsrv\HPCHEM1\ECD_O\methods\PO041025.M
 Quant Title : GC EXTRACTABLES
 QLast Update : Fri Apr 11 02:12:41 2025
 Response via : Initial Calibration
 Integrator: ChemStation

Volume Inj. : 2 µl
 Signal #1 Phase : ZB-MR1 Signal #2 Phase: ZB-MR2
 Signal #1 Info : 30Mx0.32mmx 0.50µm Signal #2 Info : 30M x 0.32mm x 0.25µm

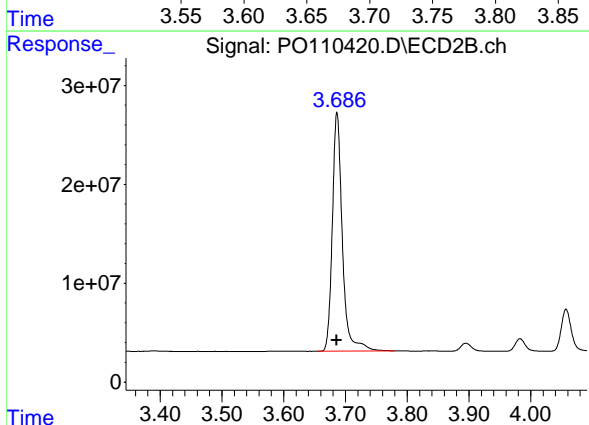




#1 Tetrachloro-m-xylene

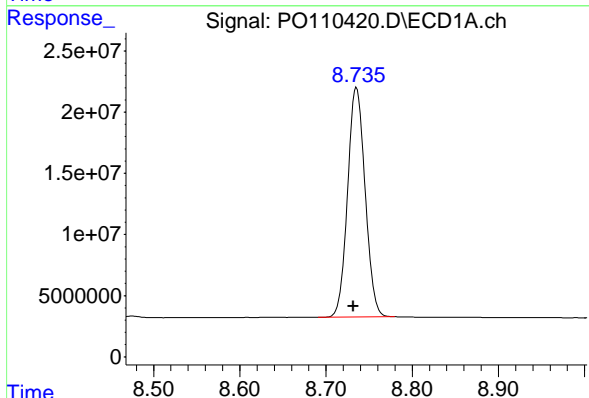
R.T.: 3.689 min
 Delta R.T.: 0.001 min
 Response: 478923019
 Conc: 54.74 ng/ml

Instrument :
 ECD_O
 ClientSampleId :
 AR1242CCC500



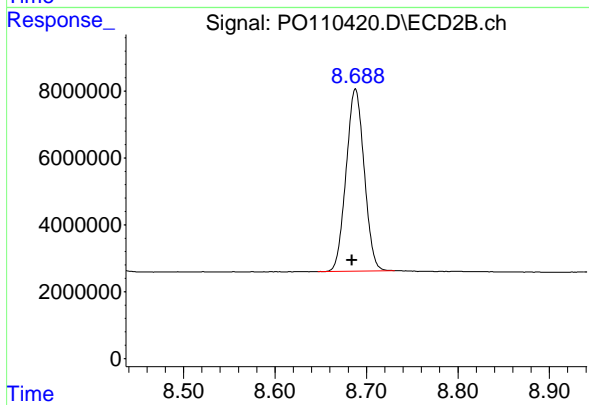
#1 Tetrachloro-m-xylene

R.T.: 3.686 min
 Delta R.T.: 0.000 min
 Response: 272016150
 Conc: 54.51 ng/ml



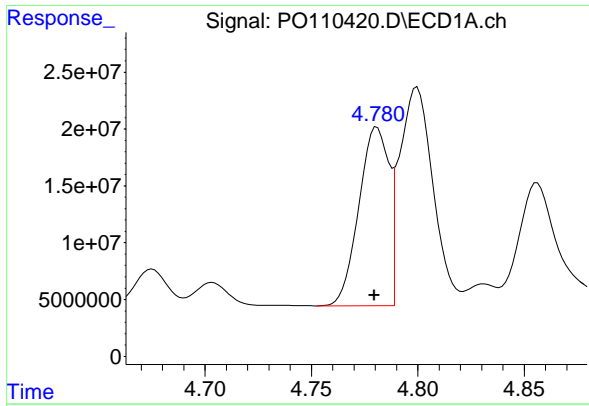
#2 Decachlorobiphenyl

R.T.: 8.735 min
 Delta R.T.: 0.004 min
 Response: 264177201
 Conc: 33.46 ng/ml



#2 Decachlorobiphenyl

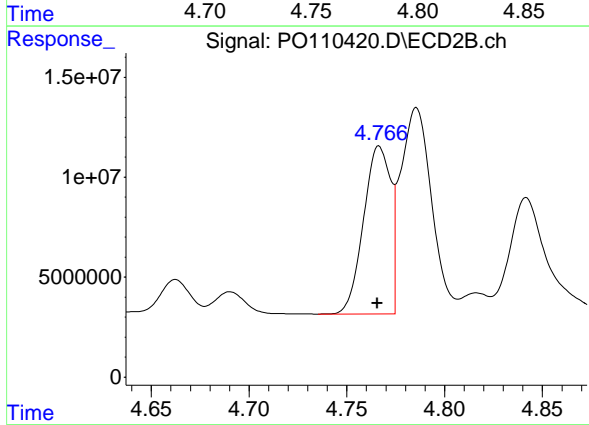
R.T.: 8.688 min
 Delta R.T.: 0.004 min
 Response: 74773033
 Conc: 38.84 ng/ml



#16 AR-1242-1

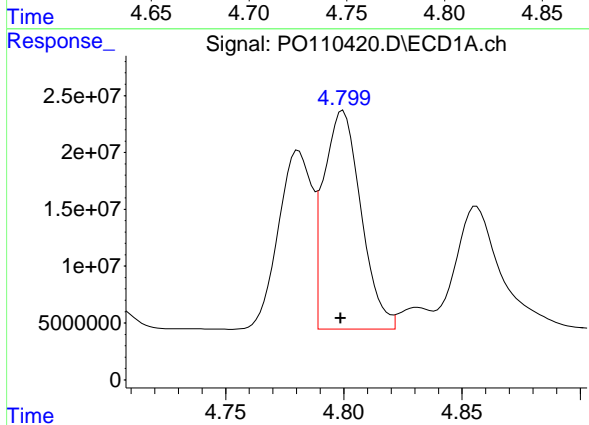
R.T.: 4.781 min
 Delta R.T.: 0.001 min
 Response: 154416092
 Conc: 556.39 ng/ml

Instrument :
 ECD_O
 ClientSampleId :
 AR1242CCC500



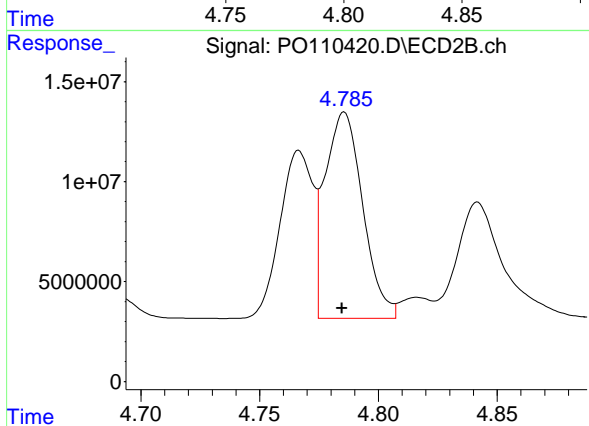
#16 AR-1242-1

R.T.: 4.767 min
 Delta R.T.: 0.000 min
 Response: 81101147
 Conc: 542.47 ng/ml



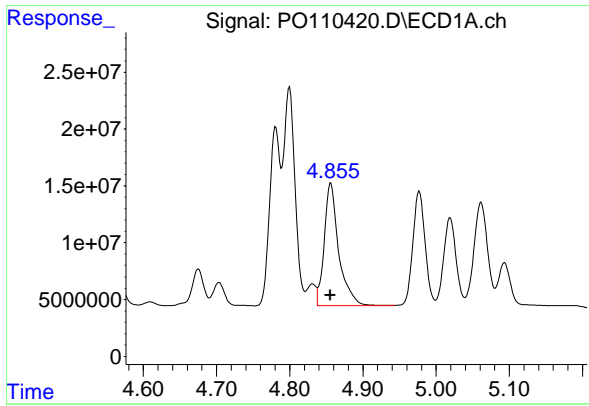
#17 AR-1242-2

R.T.: 4.800 min
 Delta R.T.: 0.001 min
 Response: 211407567
 Conc: 548.01 ng/ml



#17 AR-1242-2

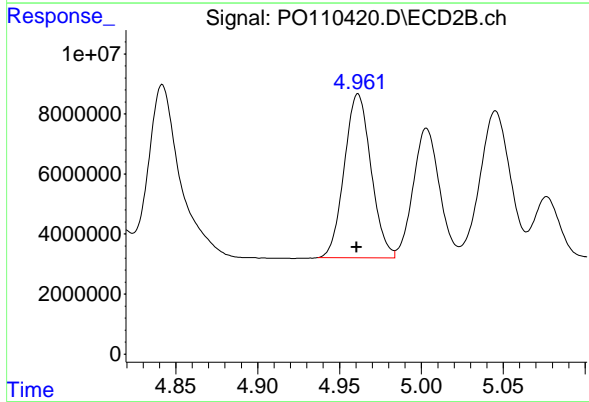
R.T.: 4.786 min
 Delta R.T.: 0.000 min
 Response: 114093904
 Conc: 534.74 ng/ml



#18 AR-1242-3

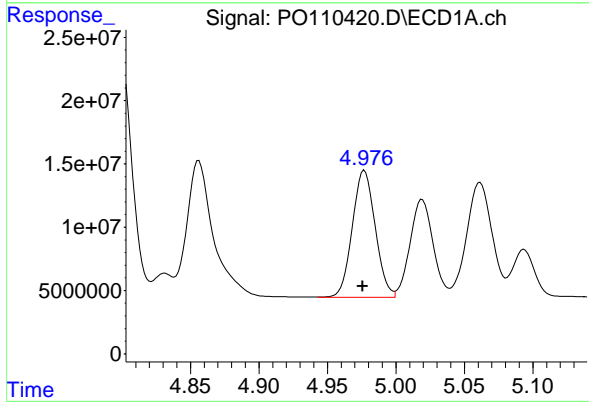
R.T.: 4.856 min
 Delta R.T.: 0.000 min
 Response: 148408093
 Conc: 533.45 ng/ml

Instrument :
 ECD_O
 ClientSampleId :
 AR1242CCC500



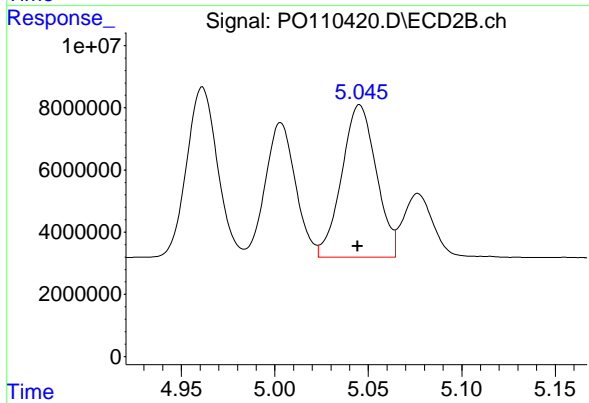
#18 AR-1242-3

R.T.: 4.961 min
 Delta R.T.: 0.000 min
 Response: 62146156
 Conc: 537.68 ng/ml



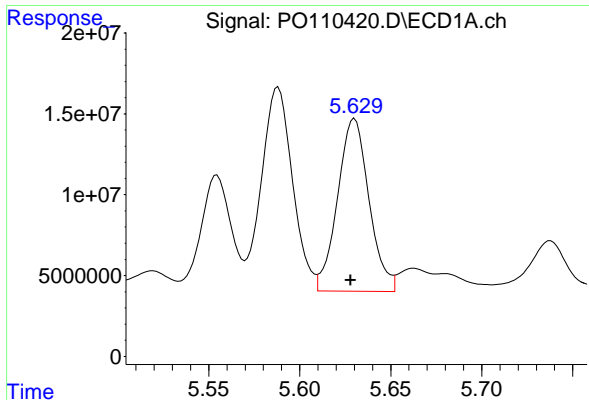
#19 AR-1242-4

R.T.: 4.977 min
 Delta R.T.: 0.001 min
 Response: 116791441
 Conc: 552.55 ng/ml



#19 AR-1242-4

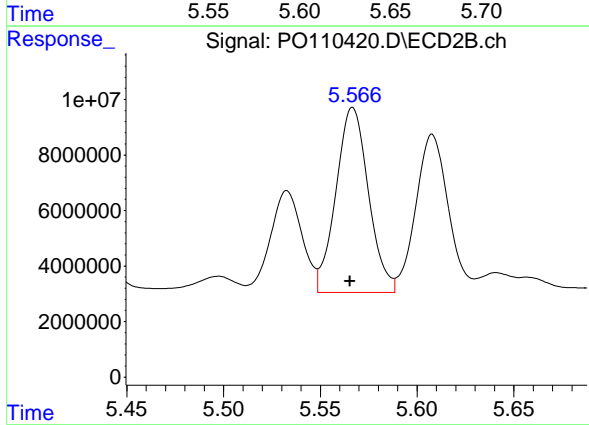
R.T.: 5.045 min
 Delta R.T.: 0.000 min
 Response: 62980256
 Conc: 524.40 ng/ml



#20 AR-1242-5

R.T.: 5.630 min
 Delta R.T.: 0.002 min
 Response: 128713943
 Conc: 568.54 ng/ml

Instrument :
 ECD_O
 ClientSampleId :
 AR1242CCC500



#20 AR-1242-5

R.T.: 5.567 min
 Delta R.T.: 0.001 min
 Response: 77900368
 Conc: 536.89 ng/ml