

Data Path : Z:\pestpcbsrv\HPCHEM1\ECD_O\Data\P0041425\
 Data File : P0110436.D
 Signal(s) : Signal #1: ECD1A.ch Signal #2: ECD2B.ch
 Acq On : 15 Apr 2025 01:56
 Operator : YP/AJ
 Sample : AR1248CCC500
 Misc :
 ALS Vial : 5 Sample Multiplier: 1

Instrument :
 ECD_O
ClientSampleId :
 AR1248CCC500

Integration File signal 1: autoint1.e
 Integration File signal 2: autoint2.e
 Quant Time: Apr 15 03:09:41 2025
 Quant Method : Z:\pestpcbsrv\HPCHEM1\ECD_O\methods\P0041025.M
 Quant Title : GC EXTRACTABLES
 QLast Update : Fri Apr 11 02:12:41 2025
 Response via : Initial Calibration
 Integrator: ChemStation

Volume Inj. : 2 µl
 Signal #1 Phase : ZB-MR1 Signal #2 Phase: ZB-MR2
 Signal #1 Info : 30Mx0.32mmx 0.50µ Signal #2 Info : 30M x 0.32mm x 0.25µm

Compound	RT#1	RT#2	Resp#1	Resp#2	ng/ml	ng/ml

System Monitoring Compounds						
1) SA Tetrachlo...	3.690	3.686	506.6E6	280.5E6	57.904	56.220
2) SA Decachlor...	8.738	8.690	344.1E6	86002844	43.585	44.677
Target Compounds						
21) L5 AR-1248-1	4.781	4.767	121.5E6	64626751	571.032	561.328
22) L5 AR-1248-2	5.019	5.004	155.9E6	85481774	526.894	524.806
23) L5 AR-1248-3	5.235	5.046	214.1E6	94999218	578.622	540.210
24) L5 AR-1248-4	5.589	5.216	294.7E6	116.2E6	566.759	570.262
25) L5 AR-1248-5	5.630	5.609	210.9E6	110.7E6	570.955	560.886

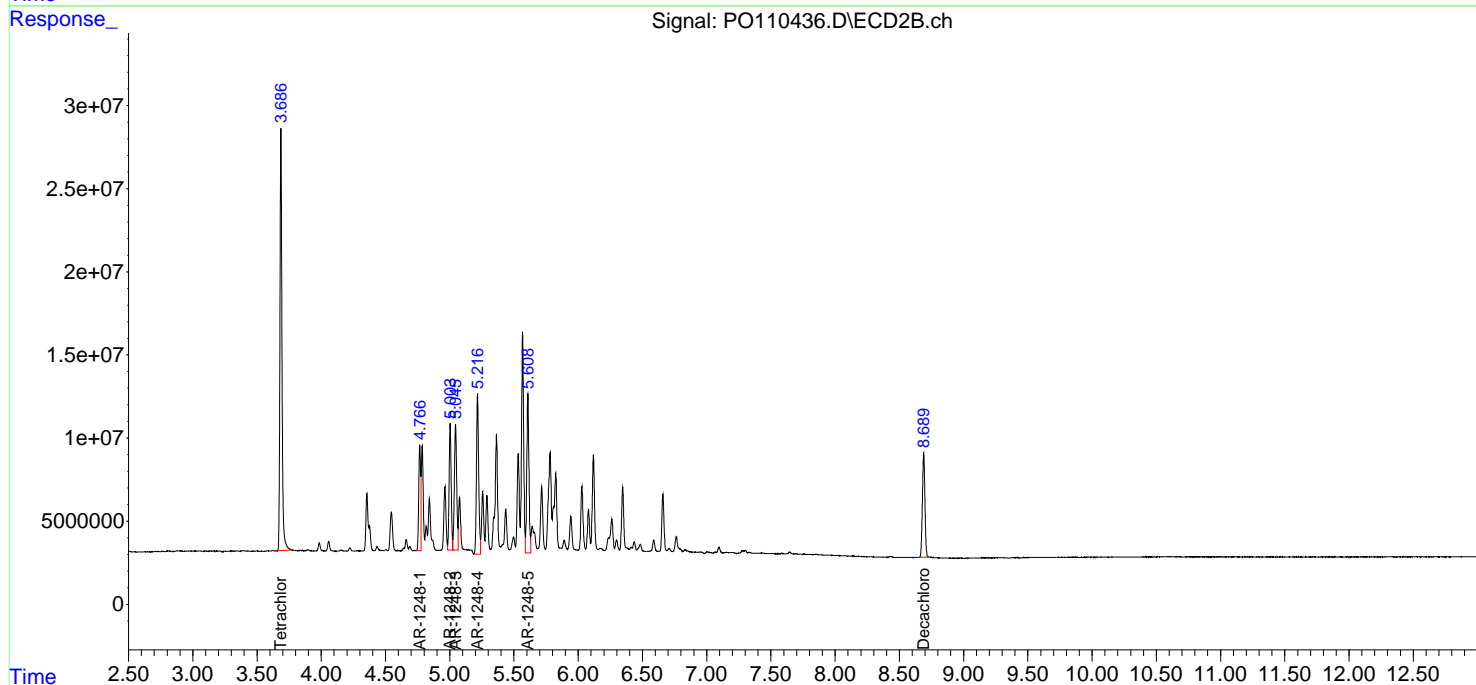
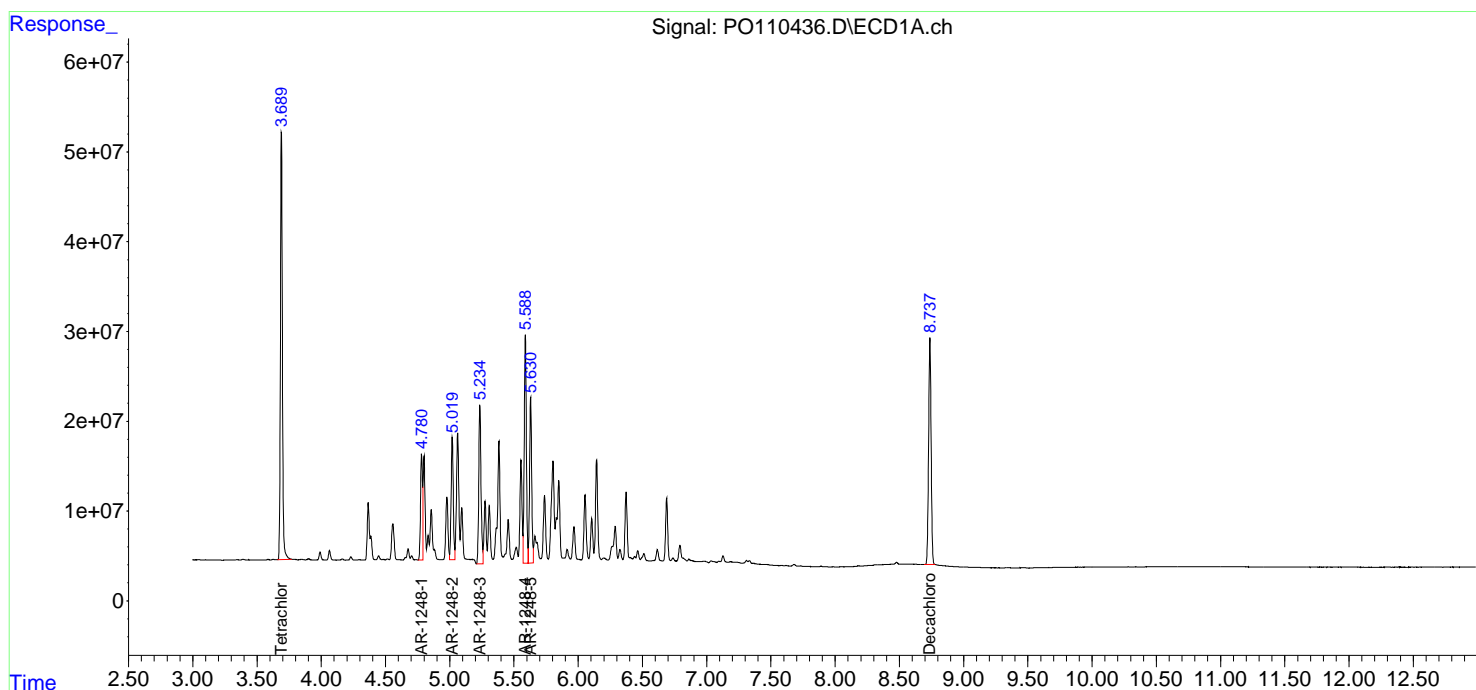
(f)=RT Delta > 1/2 Window (#)=Amounts differ by > 25% (m)=manual int.

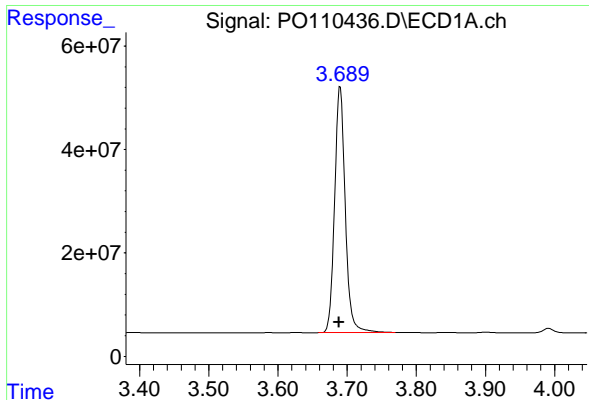
Data Path : Z:\pestpcbsrv\HPCHEM1\ECD_O\Data\PO041425\
 Data File : PO110436.D
 Signal(s) : Signal #1: ECD1A.ch Signal #2: ECD2B.ch
 Acq On : 15 Apr 2025 01:56
 Operator : YP/AJ
 Sample : AR1248CCC500
 Misc :
 ALS Vial : 5 Sample Multiplier: 1

Instrument :
 ECD_O
 ClientSampleId :
 AR1248CCC500

Integration File signal 1: autoint1.e
 Integration File signal 2: autoint2.e
 Quant Time: Apr 15 03:09:41 2025
 Quant Method : Z:\pestpcbsrv\HPCHEM1\ECD_O\methods\PO041025.M
 Quant Title : GC EXTRACTABLES
 QLast Update : Fri Apr 11 02:12:41 2025
 Response via : Initial Calibration
 Integrator: ChemStation

Volume Inj. : 2 µl
 Signal #1 Phase : ZB-MR1 Signal #2 Phase: ZB-MR2
 Signal #1 Info : 30Mx0.32mmx 0.50µm Signal #2 Info : 30M x 0.32mm x 0.25µm

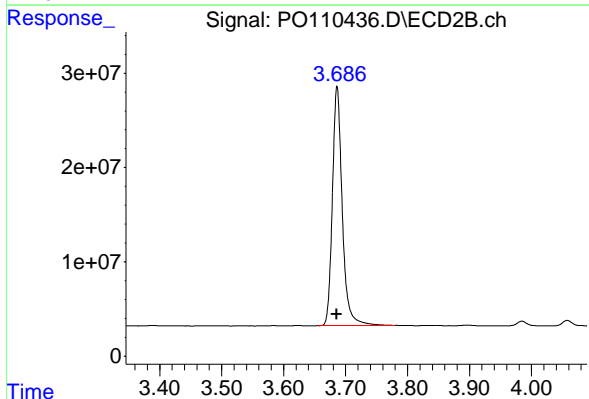




#1 Tetrachloro-m-xylene

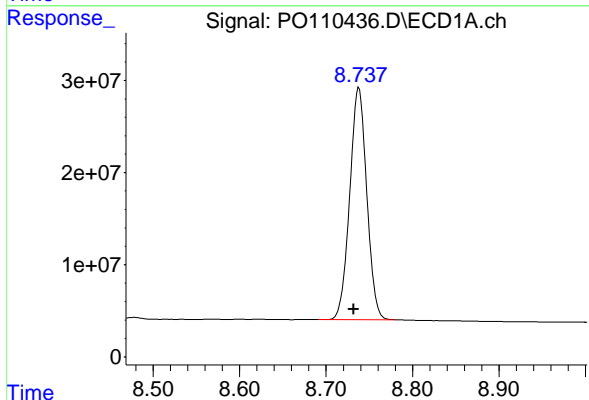
R.T.: 3.690 min
 Delta R.T.: 0.002 min
 Response: 506608884
 Conc: 57.90 ng/ml

Instrument :
 ECD_O
 ClientSampleId :
 AR1248CCC500



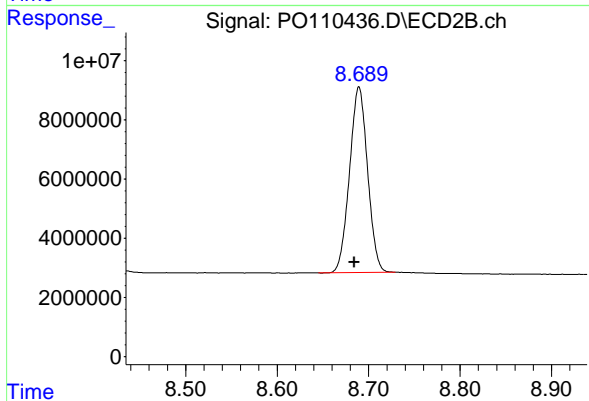
#1 Tetrachloro-m-xylene

R.T.: 3.686 min
 Delta R.T.: 0.000 min
 Response: 280525535
 Conc: 56.22 ng/ml



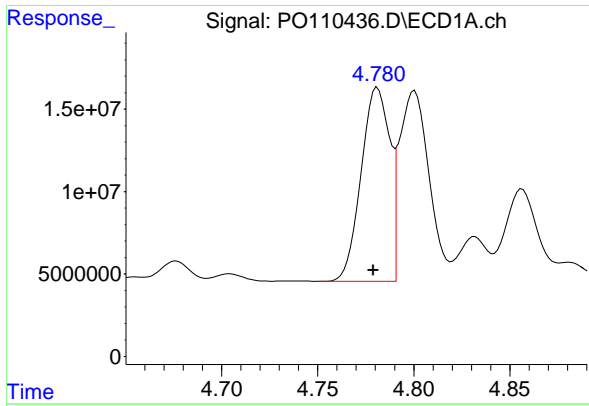
#2 Decachlorobiphenyl

R.T.: 8.738 min
 Delta R.T.: 0.006 min
 Response: 344097763
 Conc: 43.58 ng/ml



#2 Decachlorobiphenyl

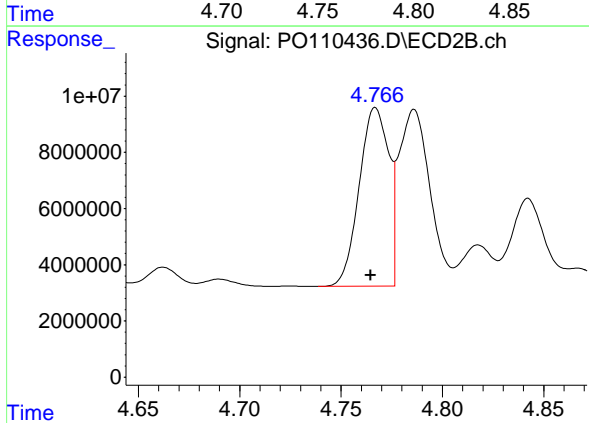
R.T.: 8.690 min
 Delta R.T.: 0.005 min
 Response: 86002844
 Conc: 44.68 ng/ml



#21 AR-1248-1

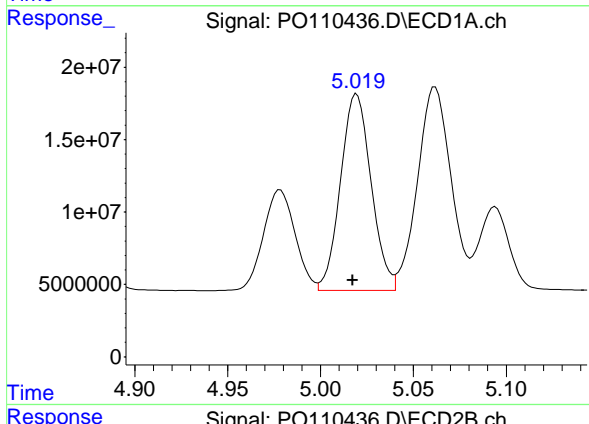
R.T.: 4.781 min
 Delta R.T.: 0.002 min
 Response: 121536235
 Conc: 571.03 ng/ml

Instrument :
 ECD_O
 ClientSampleId :
 AR1248CCC500



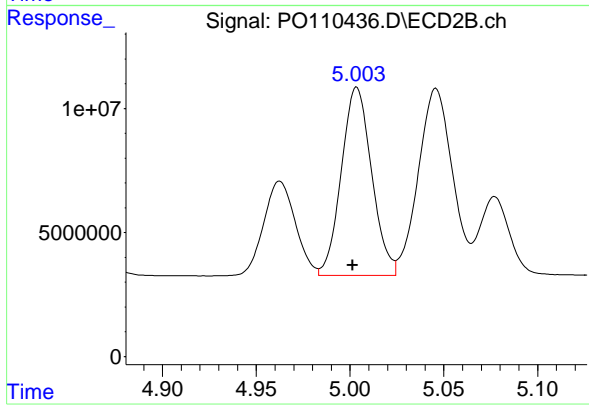
#21 AR-1248-1

R.T.: 4.767 min
 Delta R.T.: 0.002 min
 Response: 64626751
 Conc: 561.33 ng/ml



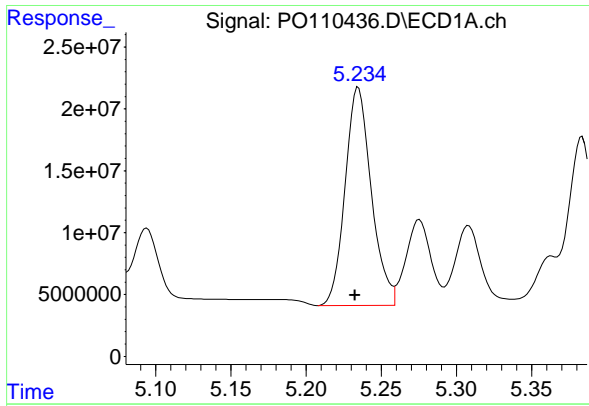
#22 AR-1248-2

R.T.: 5.019 min
 Delta R.T.: 0.002 min
 Response: 155921243
 Conc: 526.89 ng/ml



#22 AR-1248-2

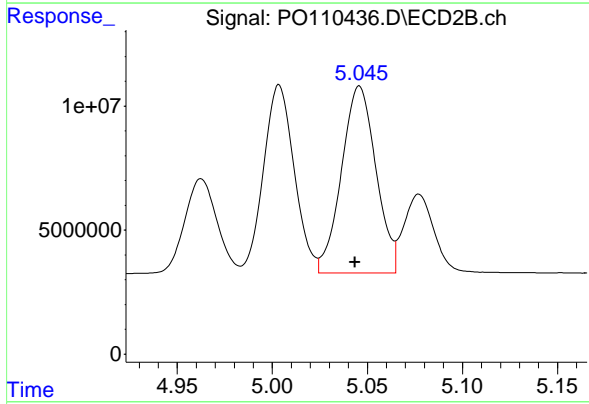
R.T.: 5.004 min
 Delta R.T.: 0.002 min
 Response: 85481774
 Conc: 524.81 ng/ml



#23 AR-1248-3

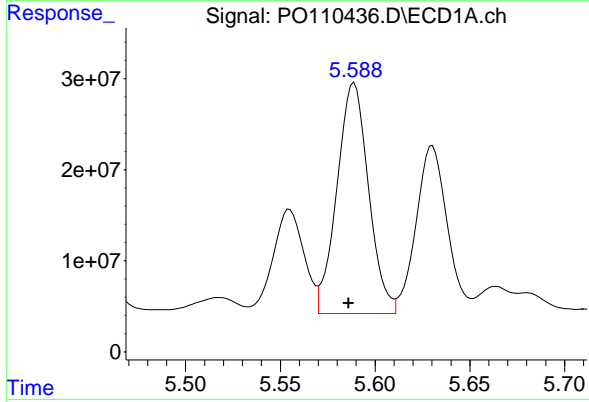
R.T.: 5.235 min
 Delta R.T.: 0.002 min
 Response: 214067966
 Conc: 578.62 ng/ml

Instrument :
 ECD_O
 ClientSampleId :
 AR1248CCC500



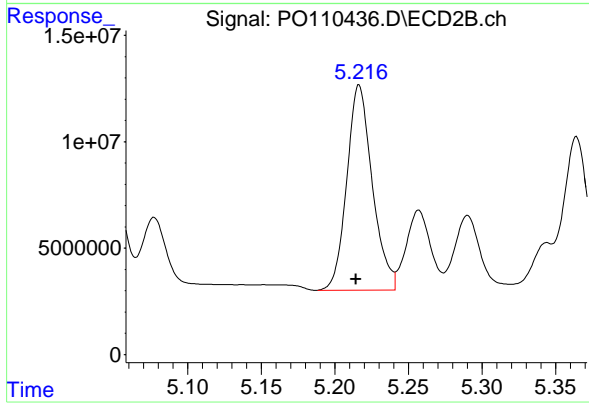
#23 AR-1248-3

R.T.: 5.046 min
 Delta R.T.: 0.002 min
 Response: 94999218
 Conc: 540.21 ng/ml



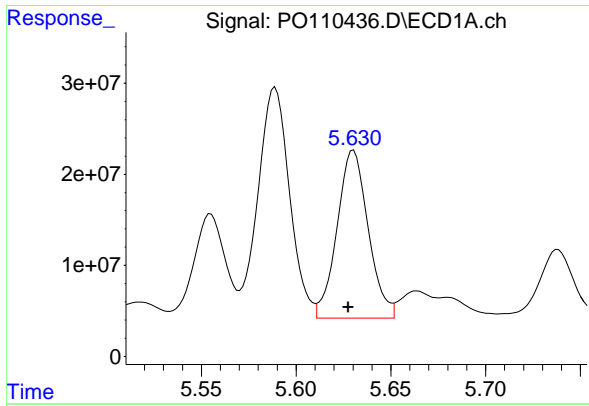
#24 AR-1248-4

R.T.: 5.589 min
 Delta R.T.: 0.003 min
 Response: 294732198
 Conc: 566.76 ng/ml



#24 AR-1248-4

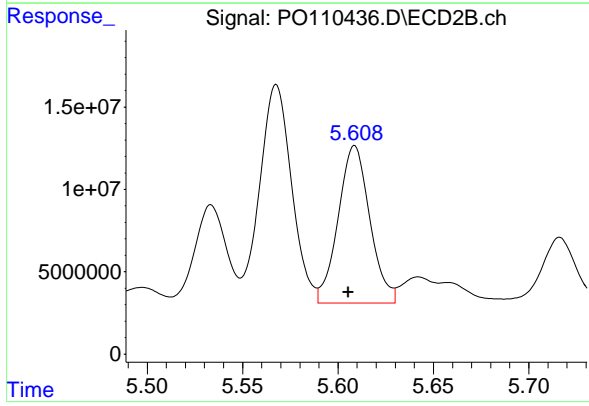
R.T.: 5.216 min
 Delta R.T.: 0.002 min
 Response: 116150271
 Conc: 570.26 ng/ml



#25 AR-1248-5

R.T.: 5.630 min
Delta R.T.: 0.003 min
Response: 210925606
Conc: 570.96 ng/ml

Instrument :
ECD_O
ClientSampleId :
AR1248CCC500



#25 AR-1248-5

R.T.: 5.609 min
Delta R.T.: 0.003 min
Response: 110716574
Conc: 560.89 ng/ml