

Data Path : Z:\pestpcbsrv\HPCHEM1\ECD\_0\Data\P0041524\  
 Data File : P0102836.D  
 Signal(s) : Signal #1: ECD1A.ch Signal #2: ECD2B.ch  
 Acq On : 15 Apr 2024 19:15  
 Operator : YP/AJ  
 Sample : AR1242ICC250  
 Misc :  
 ALS Vial : 13 Sample Multiplier: 1

**Instrument :**  
 ECD\_0  
**ClientSampleId :**  
 AR1242ICC250

Integration File signal 1: autoint1.e  
 Integration File signal 2: autoint2.e  
 Quant Time: Apr 16 01:18:39 2024  
 Quant Method : Z:\pestpcbsrv\HPCHEM1\ECD\_0\methods\P0041524.M  
 Quant Title : GC EXTRACTABLES  
 QLast Update : Tue Apr 16 01:18:28 2024  
 Response via : Initial Calibration  
 Integrator: ChemStation

Volume Inj. : 2 µl  
 Signal #1 Phase : ZB-MR1 Signal #2 Phase: ZB-MR2  
 Signal #1 Info : 30Mx0.32mmx 0.50µ Signal #2 Info : 30M x 0.32mm x 0.25µm

Compound	RT#1	RT#2	Resp#1	Resp#2	ng/ml	ng/ml
-----						
System Monitoring Compounds						
1) SA Tetrachlo...	4.261	3.378	116.4E6	75008149	25.280	25.686
2) SA Decachlor...	9.790	8.237	69243905	45789632	26.076	26.423
Target Compounds						
16) L4 AR-1242-1	5.405	4.427	25564624	16521152	261.871	272.699
17) L4 AR-1242-2	5.427	4.444	37909434	23454179	263.953	265.366
18) L4 AR-1242-3	5.488	4.617	24499269	12775445	264.326	266.752
19) L4 AR-1242-4	5.584	4.697	19036221	14300747	258.723	269.827
20) L4 AR-1242-5	6.310	5.209	16858977	16143602	262.860	268.420
-----						

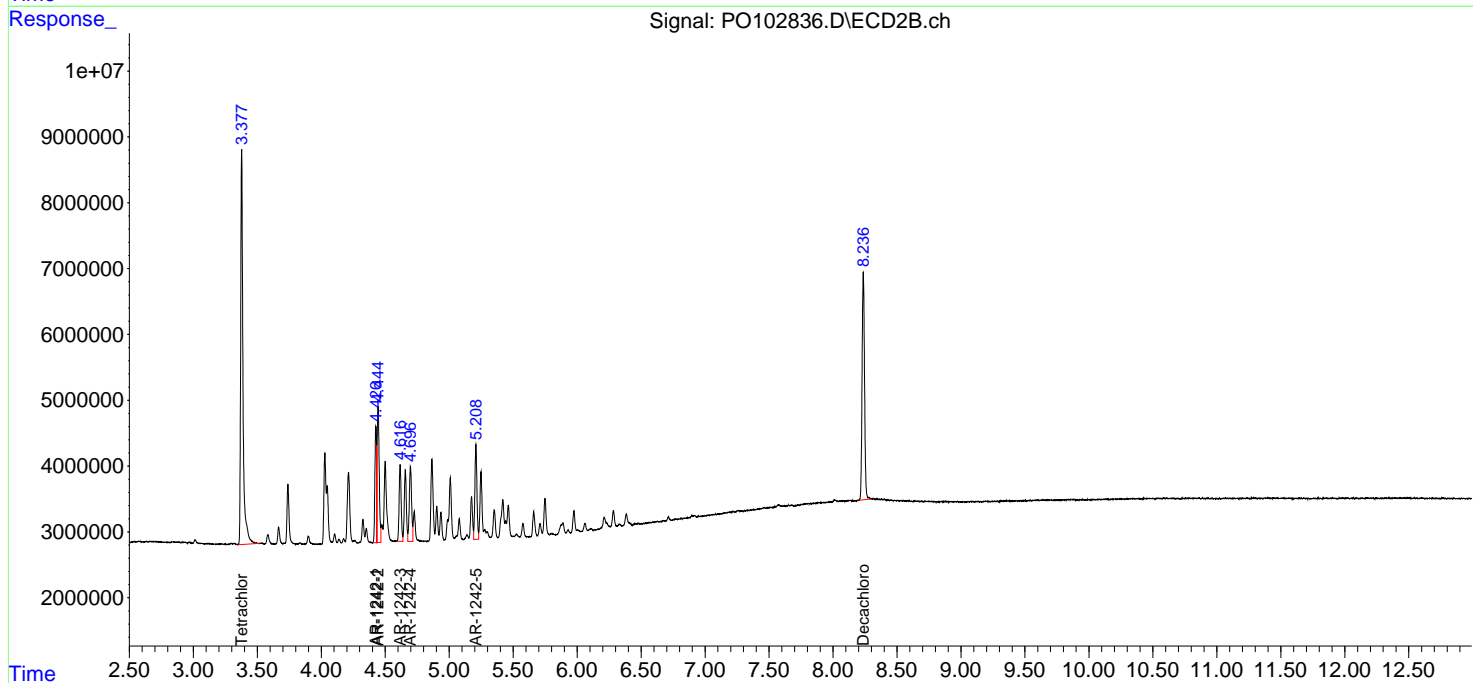
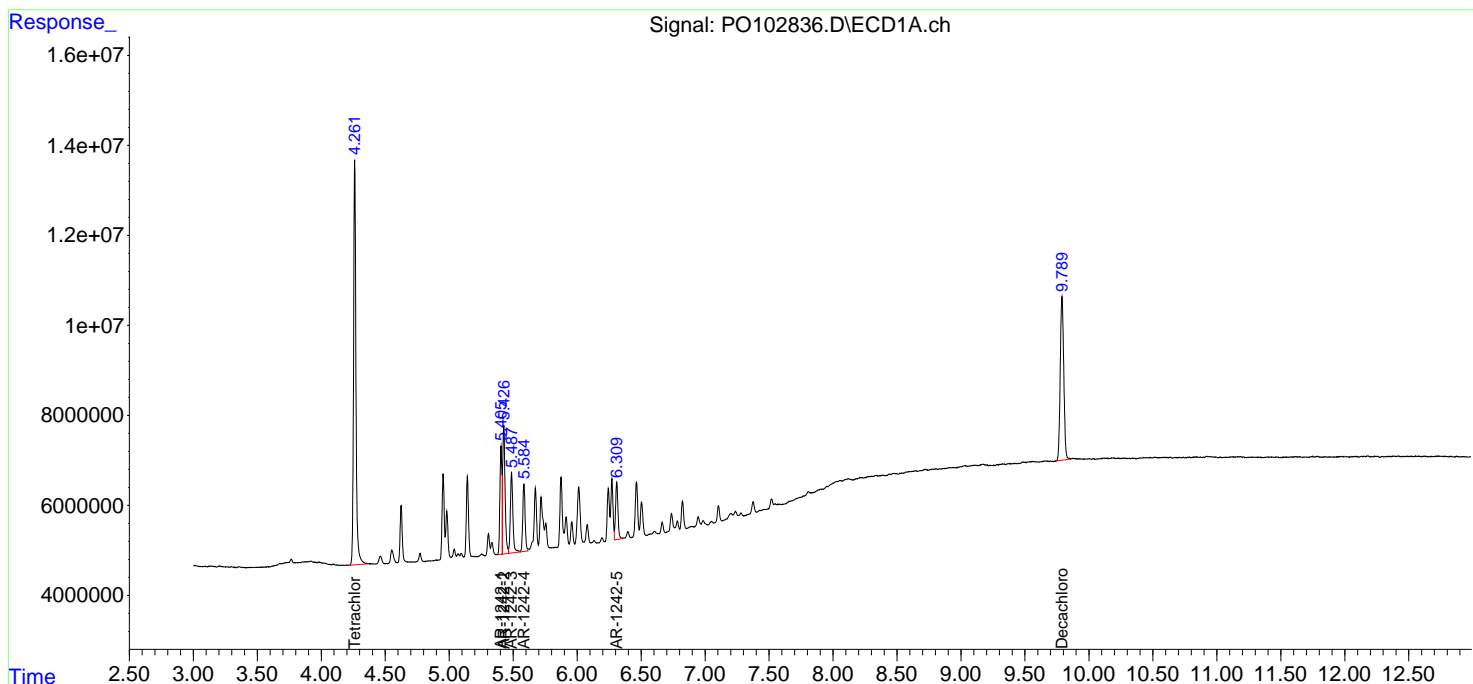
(f)=RT Delta > 1/2 Window (#)=Amounts differ by > 25% (m)=manual int.

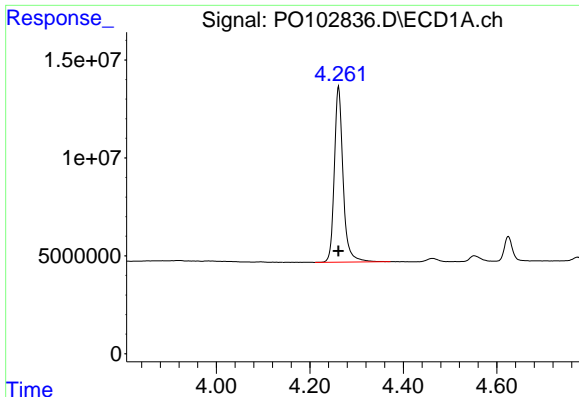
Data Path : Z:\pestpcbsrv\HPCHEM1\ECD\_O\Data\PO041524\  
Data File : PO102836.D  
Signal(s) : Signal #1: ECD1A.ch Signal #2: ECD2B.ch  
Acq On : 15 Apr 2024 19:15  
Operator : YP/AJ  
Sample : AR1242ICC250  
Misc :  
ALS Vial : 13 Sample Multiplier: 1

Instrument :  
ECD\_O  
ClientSampleId :  
AR1242ICC250

Integration File signal 1: autoint1.e  
Integration File signal 2: autoint2.e  
Quant Time: Apr 16 01:18:39 2024  
Quant Method : Z:\pestpcbsrv\HPCHEM1\ECD\_O\methods\PO041524.M  
Quant Title : GC EXTRACTABLES  
QLast Update : Tue Apr 16 01:18:28 2024  
Response via : Initial Calibration  
Integrator: ChemStation

Volume Inj. : 2 µl  
Signal #1 Phase : ZB-MR1 Signal #2 Phase: ZB-MR2  
Signal #1 Info : 30Mx0.32mmx 0.50µ Signal #2 Info : 30M x 0.32mm x 0.25µm

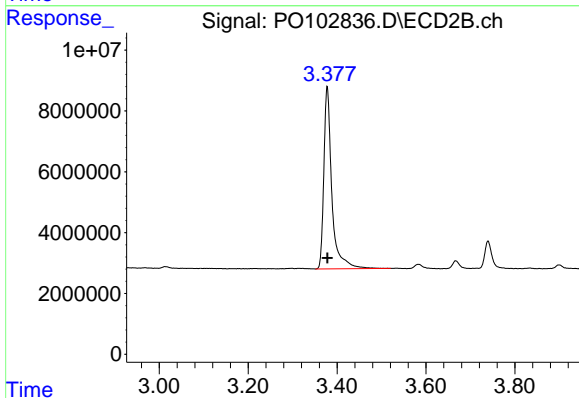




#1 Tetrachloro-m-xylene

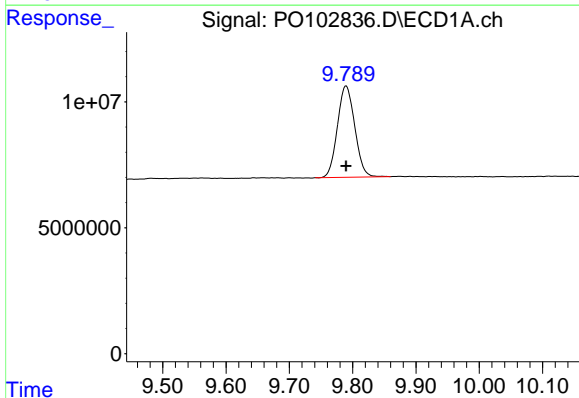
R.T.: 4.261 min  
Delta R.T.: 0.000 min  
Response: 116433102  
Conc: 25.28 ng/ml

Instrument :  
ECD\_O  
ClientSampleId :  
AR1242ICC250



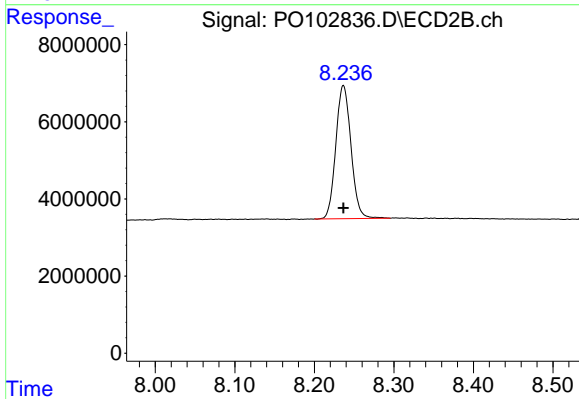
#1 Tetrachloro-m-xylene

R.T.: 3.378 min  
Delta R.T.: 0.000 min  
Response: 75008149  
Conc: 25.69 ng/ml



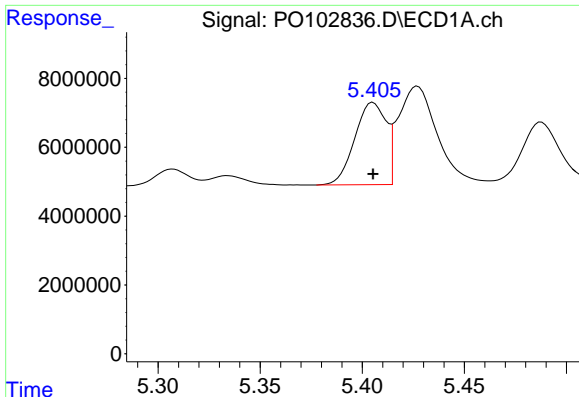
#2 Decachlorobiphenyl

R.T.: 9.790 min  
Delta R.T.: 0.000 min  
Response: 69243905  
Conc: 26.08 ng/ml



#2 Decachlorobiphenyl

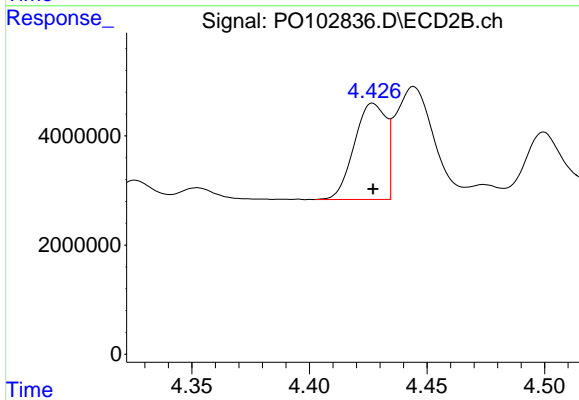
R.T.: 8.237 min  
Delta R.T.: 0.000 min  
Response: 45789632  
Conc: 26.42 ng/ml



#16 AR-1242-1

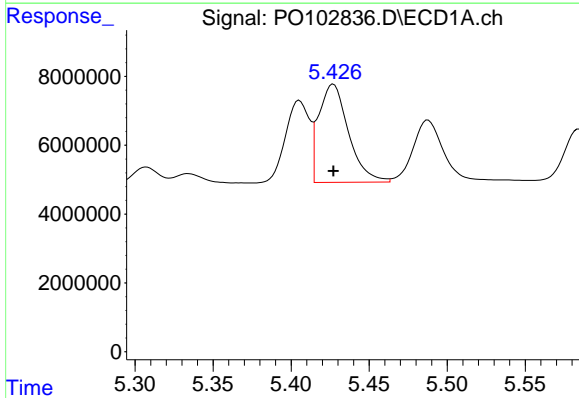
R.T.: 5.405 min  
 Delta R.T.: 0.000 min  
 Response: 25564624  
 Conc: 261.87 ng/ml

Instrument :  
 ECD\_O  
 ClientSampleId :  
 AR1242ICC250



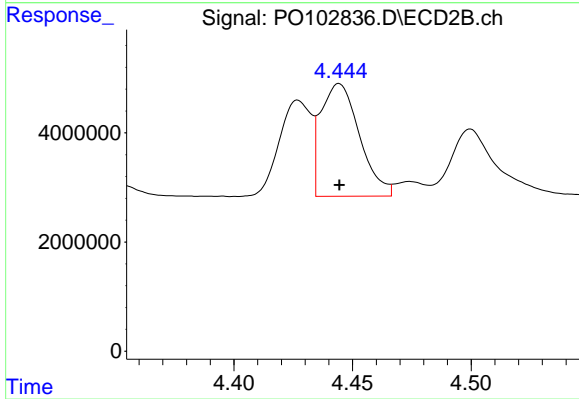
#16 AR-1242-1

R.T.: 4.427 min  
 Delta R.T.: 0.000 min  
 Response: 16521152  
 Conc: 272.70 ng/ml



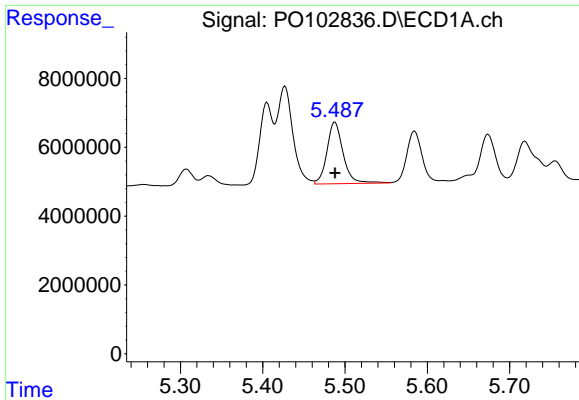
#17 AR-1242-2

R.T.: 5.427 min  
 Delta R.T.: 0.000 min  
 Response: 37909434  
 Conc: 263.95 ng/ml



#17 AR-1242-2

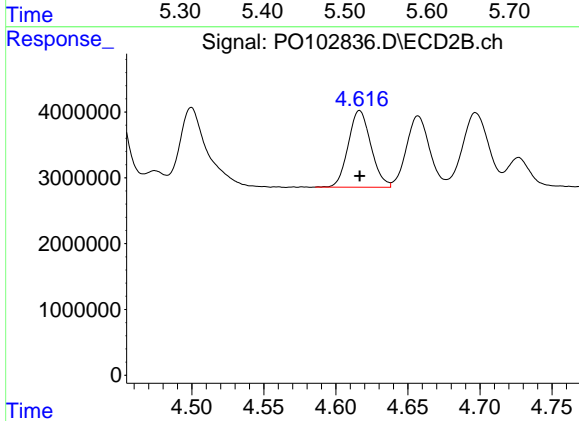
R.T.: 4.444 min  
 Delta R.T.: 0.000 min  
 Response: 23454179  
 Conc: 265.37 ng/ml



#18 AR-1242-3

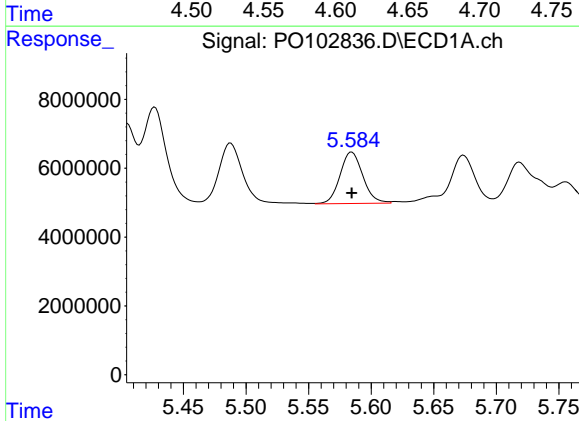
R.T.: 5.488 min  
 Delta R.T.: 0.000 min  
 Response: 24499269  
 Conc: 264.33 ng/ml

Instrument :  
 ECD\_O  
 ClientSampleId :  
 AR1242ICC250



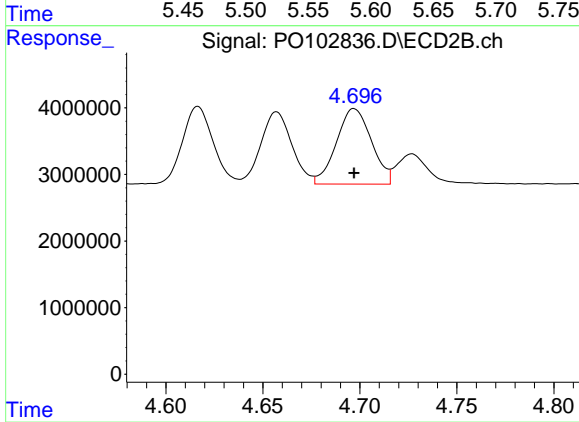
#18 AR-1242-3

R.T.: 4.617 min  
 Delta R.T.: 0.000 min  
 Response: 12775445  
 Conc: 266.75 ng/ml



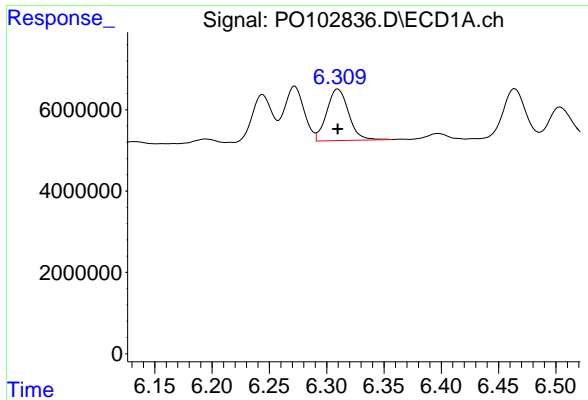
#19 AR-1242-4

R.T.: 5.584 min  
 Delta R.T.: 0.000 min  
 Response: 19036221  
 Conc: 258.72 ng/ml



#19 AR-1242-4

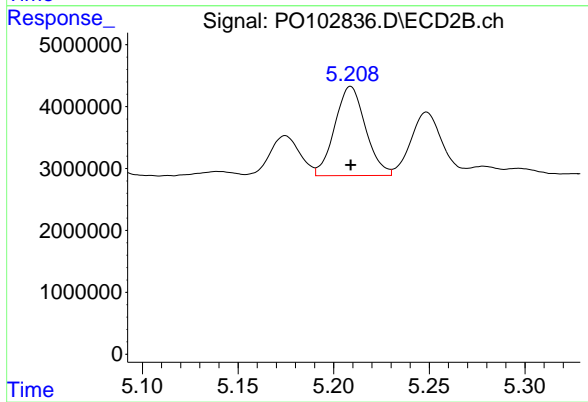
R.T.: 4.697 min  
 Delta R.T.: 0.000 min  
 Response: 14300747  
 Conc: 269.83 ng/ml



#20 AR-1242-5

R.T.: 6.310 min  
Delta R.T.: 0.000 min  
Response: 16858977  
Conc: 262.86 ng/ml

Instrument :  
ECD\_O  
ClientSampleId :  
AR1242ICC250



#20 AR-1242-5

R.T.: 5.209 min  
Delta R.T.: 0.000 min  
Response: 16143602  
Conc: 268.42 ng/ml