

Data Path : Z:\pestpcbsrv\HPCHEM1\ECD\_0\Data\P0041524\  
 Data File : P0102849.D  
 Signal(s) : Signal #1: ECD1A.ch Signal #2: ECD2B.ch  
 Acq On : 15 Apr 2024 23:00  
 Operator : YP/AJ  
 Sample : AR1268ICC1000  
 Misc :  
 ALS Vial : 26 Sample Multiplier: 1

Instrument :  
 ECD\_0  
 ClientSampleId :  
 AR1268ICC1000

Integration File signal 1: autoint1.e  
 Integration File signal 2: autoint2.e  
 Quant Time: Apr 16 04:13:44 2024  
 Quant Method : Z:\pestpcbsrv\HPCHEM1\ECD\_0\methods\P0041524.M  
 Quant Title : GC EXTRACTABLES  
 QLast Update : Tue Apr 16 04:13:37 2024  
 Response via : Initial Calibration  
 Integrator: ChemStation

Volume Inj. : 2 µl  
 Signal #1 Phase : ZB-MR1 Signal #2 Phase: ZB-MR2  
 Signal #1 Info : 30Mx0.32mmx 0.50µ Signal #2 Info : 30M x 0.32mm x 0.25µm

Compound	RT#1	RT#2	Resp#1	Resp#2	ng/ml	ng/ml
-----						
System Monitoring Compounds						
1) SA Tetrachlo...	4.261	3.378	449.7E6	279.5E6	98.980	98.768
2) SA Decachlor...	9.788	8.235	434.2E6	285.1E6	98.025	97.954
Target Compounds						
41) L9 AR-1268-1	8.409	7.193	336.6E6	285.3E6	985.857	984.261
42) L9 AR-1268-2	8.497	7.257	306.8E6	267.4E6	984.629	985.960
43) L9 AR-1268-3	8.707	7.456	272.9E6	233.4E6	983.705	983.801
44) L9 AR-1268-4	9.103	8.014	104.1E6	621.3E6	985.291	993.794
45) L9 AR-1268-5	9.482	8.235	872.2E6	285.1E6	990.739	979.542
-----						

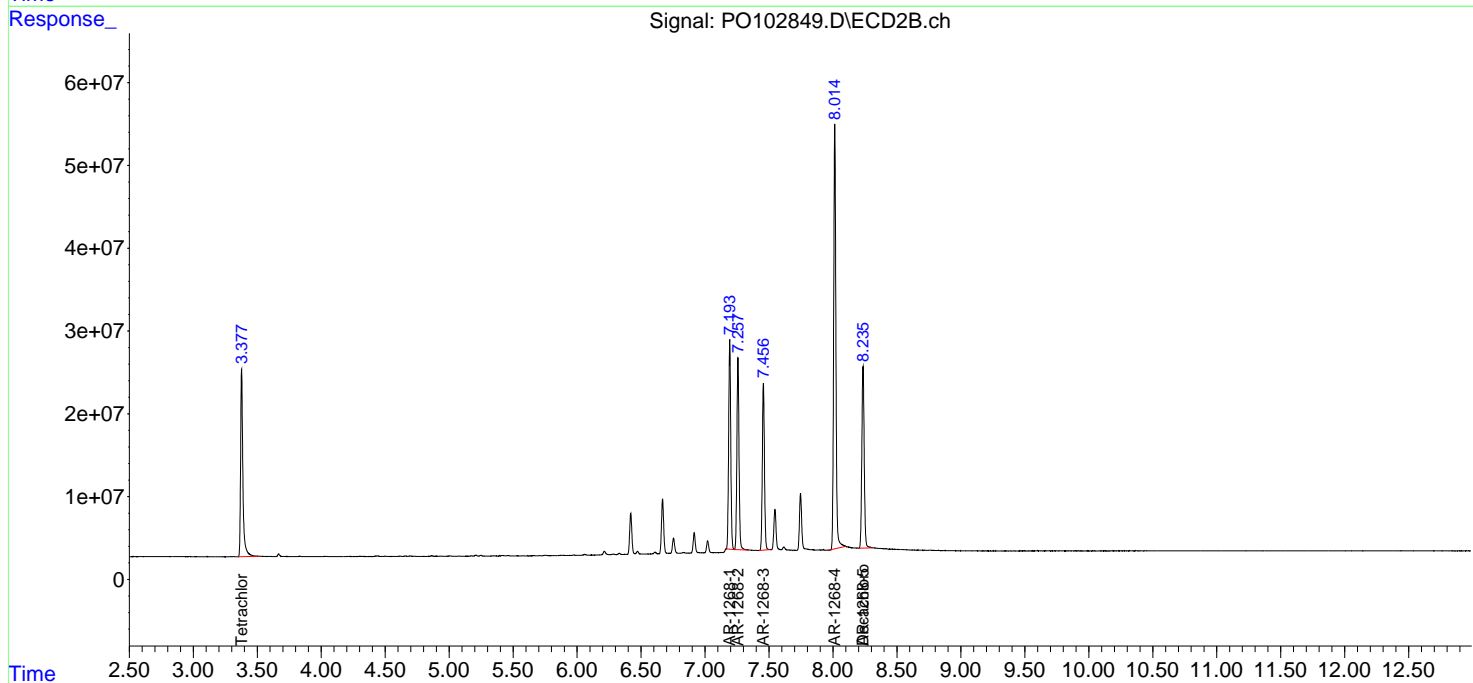
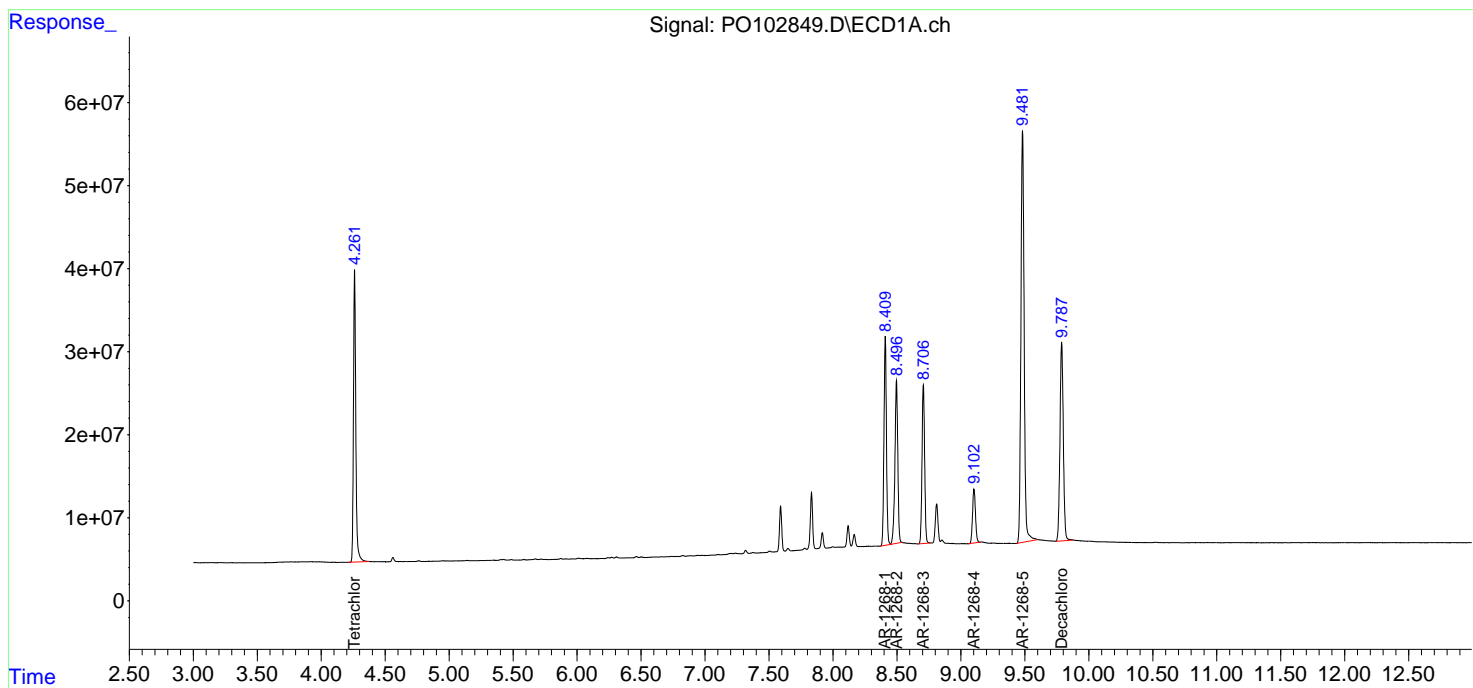
(f)=RT Delta > 1/2 Window (#)=Amounts differ by > 25% (m)=manual int.

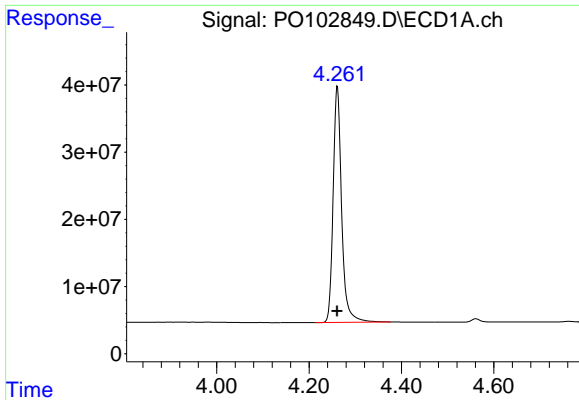
Data Path : Z:\pestpcbsrv\HPCHEM1\ECD\_O\Data\PO041524\  
 Data File : PO102849.D  
 Signal(s) : Signal #1: ECD1A.ch Signal #2: ECD2B.ch  
 Acq On : 15 Apr 2024 23:00  
 Operator : YP/AJ  
 Sample : AR1268ICC1000  
 Misc :  
 ALS Vial : 26 Sample Multiplier: 1

Instrument :  
 ECD\_O  
 ClientSampleId :  
 AR1268ICC1000

Integration File signal 1: autoint1.e  
 Integration File signal 2: autoint2.e  
 Quant Time: Apr 16 04:13:44 2024  
 Quant Method : Z:\pestpcbsrv\HPCHEM1\ECD\_O\methods\PO041524.M  
 Quant Title : GC EXTRACTABLES  
 QLast Update : Tue Apr 16 04:13:37 2024  
 Response via : Initial Calibration  
 Integrator: ChemStation

Volume Inj. : 2 µl  
 Signal #1 Phase : ZB-MR1 Signal #2 Phase: ZB-MR2  
 Signal #1 Info : 30Mx0.32mmx 0.50µ Signal #2 Info : 30M x 0.32mm x 0.25µm

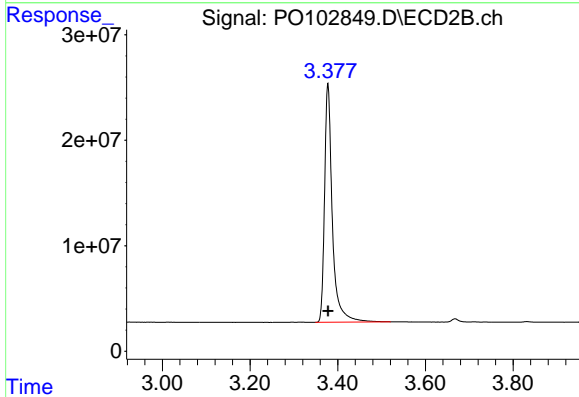




#1 Tetrachloro-m-xylene

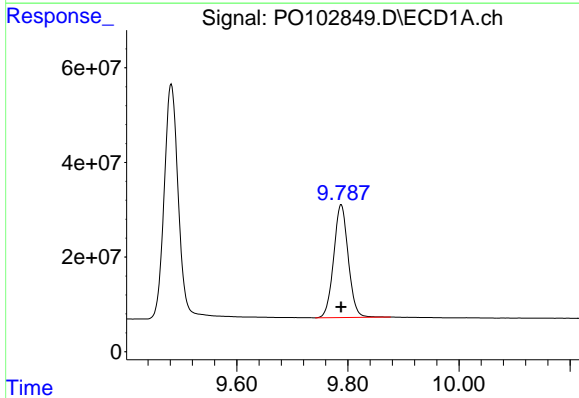
R.T.: 4.261 min  
 Delta R.T.: 0.000 min  
 Response: 449703401  
 Conc: 98.98 ng/ml

Instrument :  
 ECD\_O  
 ClientSampleId :  
 AR1268ICC1000



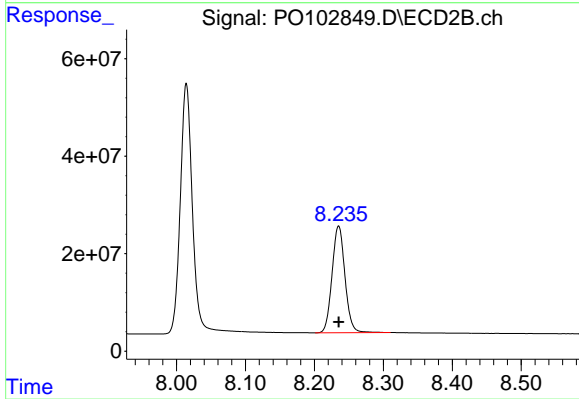
#1 Tetrachloro-m-xylene

R.T.: 3.378 min  
 Delta R.T.: 0.000 min  
 Response: 279523061  
 Conc: 98.77 ng/ml



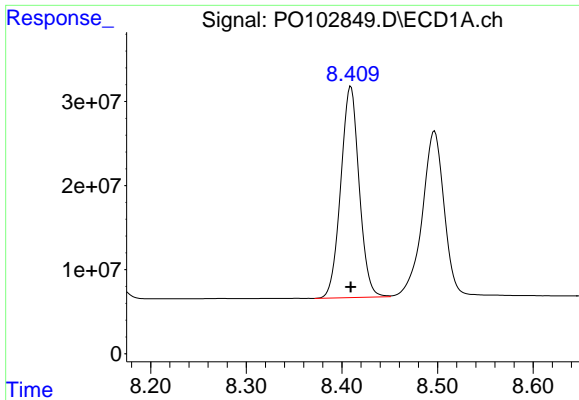
#2 Decachlorobiphenyl

R.T.: 9.788 min  
 Delta R.T.: 0.000 min  
 Response: 434184735  
 Conc: 98.03 ng/ml



#2 Decachlorobiphenyl

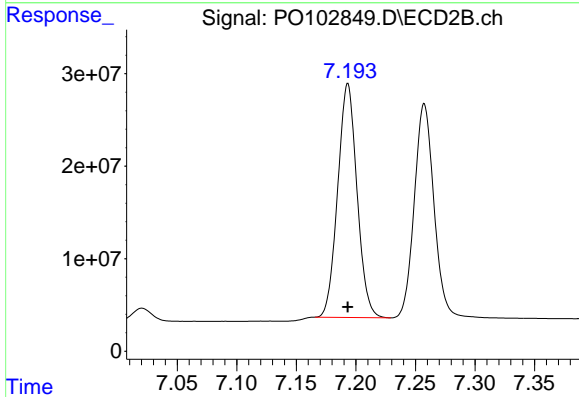
R.T.: 8.235 min  
 Delta R.T.: 0.000 min  
 Response: 285054084  
 Conc: 97.95 ng/ml



#41 AR-1268-1

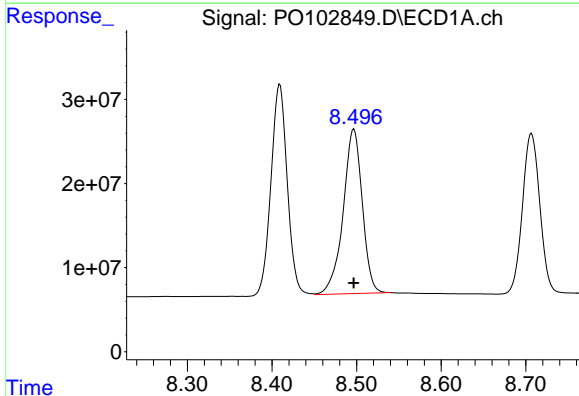
R.T.: 8.409 min  
 Delta R.T.: 0.000 min  
 Response: 336597995  
 Conc: 985.86 ng/ml

Instrument :  
 ECD\_O  
 ClientSampleId :  
 AR1268ICC1000



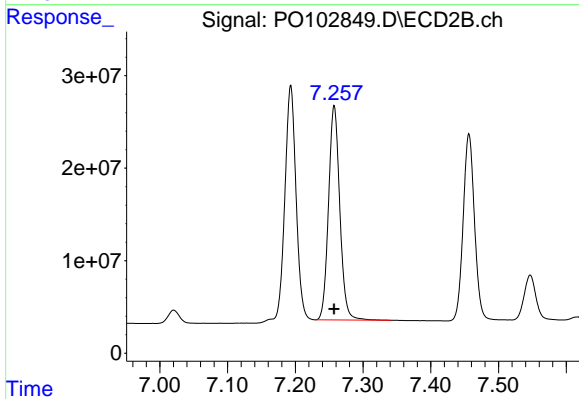
#41 AR-1268-1

R.T.: 7.193 min  
 Delta R.T.: 0.000 min  
 Response: 285297969  
 Conc: 984.26 ng/ml



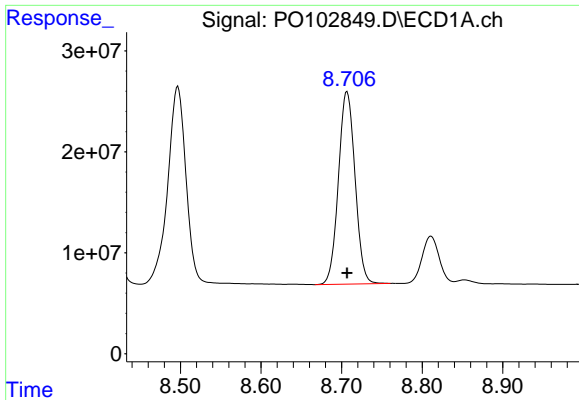
#42 AR-1268-2

R.T.: 8.497 min  
 Delta R.T.: 0.000 min  
 Response: 306774607  
 Conc: 984.63 ng/ml



#42 AR-1268-2

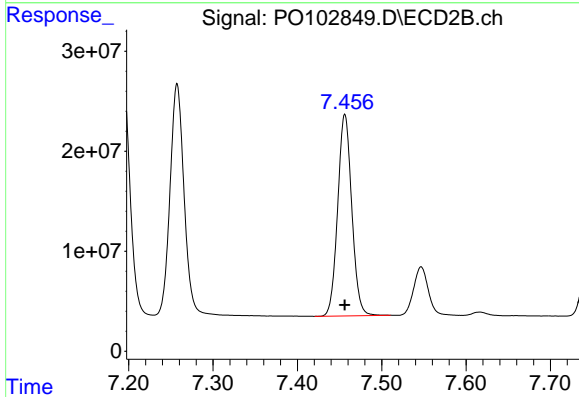
R.T.: 7.257 min  
 Delta R.T.: 0.000 min  
 Response: 267400183  
 Conc: 985.96 ng/ml



#43 AR-1268-3

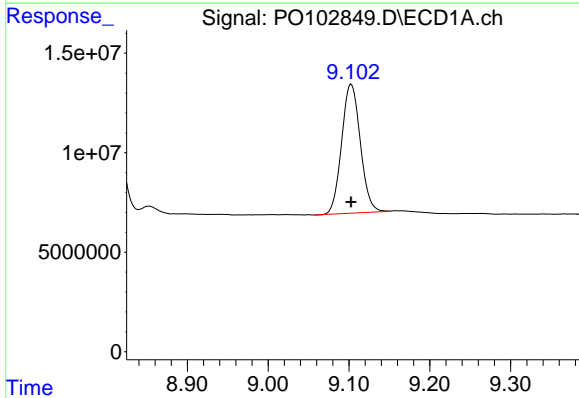
R.T.: 8.707 min  
 Delta R.T.: 0.000 min  
 Response: 272920984  
 Conc: 983.70 ng/ml

Instrument :  
 ECD\_O  
 ClientSampleId :  
 AR1268ICC1000



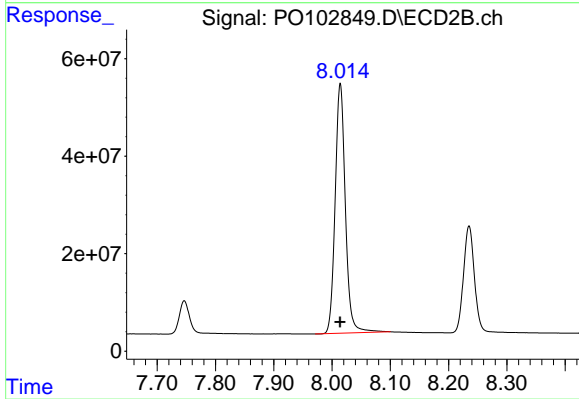
#43 AR-1268-3

R.T.: 7.456 min  
 Delta R.T.: 0.000 min  
 Response: 233427543  
 Conc: 983.80 ng/ml



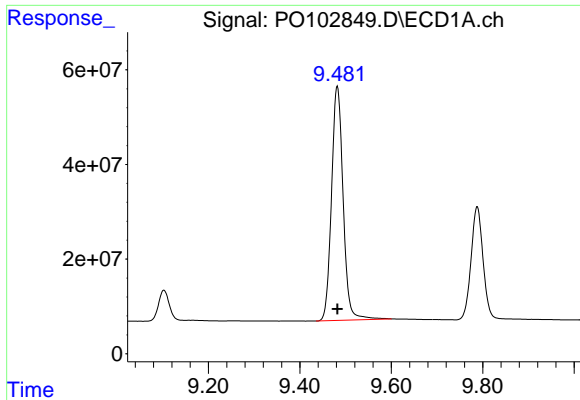
#44 AR-1268-4

R.T.: 9.103 min  
 Delta R.T.: 0.000 min  
 Response: 104109385  
 Conc: 985.29 ng/ml



#44 AR-1268-4

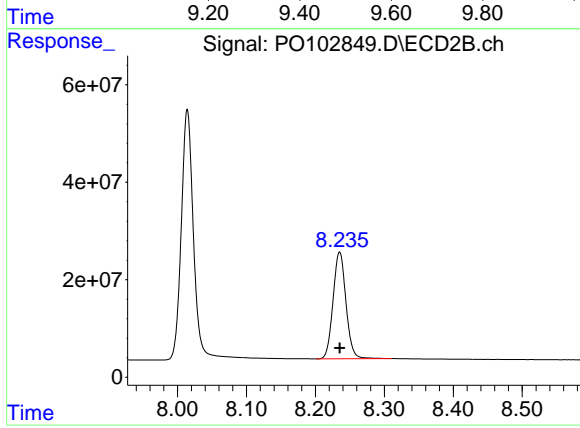
R.T.: 8.014 min  
 Delta R.T.: 0.000 min  
 Response: 621318468  
 Conc: 993.79 ng/ml



#45 AR-1268-5

R.T.: 9.482 min  
 Delta R.T.: 0.000 min  
 Response: 872169236  
 Conc: 990.74 ng/ml

Instrument :  
 ECD\_O  
 ClientSampleId :  
 AR1268ICC1000



#45 AR-1268-5

R.T.: 8.235 min  
 Delta R.T.: 0.000 min  
 Response: 285054084  
 Conc: 979.54 ng/ml