

Data Path : Z:\pestpcbsrv\HPCHEM1\ECD_O\Data\P0041525\
 Data File : P0110455.D
 Signal(s) : Signal #1: ECD1A.ch Signal #2: ECD2B.ch
 Acq On : 15 Apr 2025 13:09
 Operator : YP/AJ
 Sample : PB167593BS
 Misc :
 ALS Vial : 9 Sample Multiplier: 1

Instrument :
 ECD_O
 ClientSampleId :
 PB167593BS

Integration File signal 1: autoint1.e
 Integration File signal 2: autoint2.e
 Quant Time: Apr 15 13:39:57 2025
 Quant Method : Z:\pestpcbsrv\HPCHEM1\ECD_O\methods\P0041025.M
 Quant Title : GC EXTRACTABLES
 QLast Update : Fri Apr 11 02:12:41 2025
 Response via : Initial Calibration
 Integrator: ChemStation

Volume Inj. : 2 µl
 Signal #1 Phase : ZB-MR1 Signal #2 Phase: ZB-MR2
 Signal #1 Info : 30Mx0.32mmx 0.50µ Signal #2 Info : 30M x 0.32mm x 0.25µm

Compound	RT#1	RT#2	Resp#1	Resp#2	ng/ml	ng/ml

System Monitoring Compounds						
1) SA Tetrachlo...	3.688	3.686	189.7E6	101.1E6	21.677	20.263
2) SA Decachlor...	8.736	8.688	147.4E6	41076080	18.674	21.338
Target Compounds						
3) L1 AR-1016-1	4.778	4.767	159.8E6	80533235	486.899	458.854
4) L1 AR-1016-2	4.798	4.786	218.4E6	114.0E6	480.008	453.448
5) L1 AR-1016-3	4.854	4.961	151.6E6	61806633	469.885	455.429
6) L1 AR-1016-4	4.975	5.003	120.2E6	50478867	482.544	441.373
7) L1 AR-1016-5	5.232	5.216	125.8E6	65415717	467.457	438.814
31) L7 AR-1260-1	6.273	6.248	237.6E6	114.0E6	503.021	463.539
32) L7 AR-1260-2	6.462	6.436	292.6E6	133.6E6	498.956	457.882
33) L7 AR-1260-3	6.830	6.589	207.5E6	123.5E6	420.911	456.037
34) L7 AR-1260-4	7.090	7.060	191.0E6	83590042	450.006	416.617
35) L7 AR-1260-5	7.333	7.301	447.3E6	183.1E6	428.689	398.995

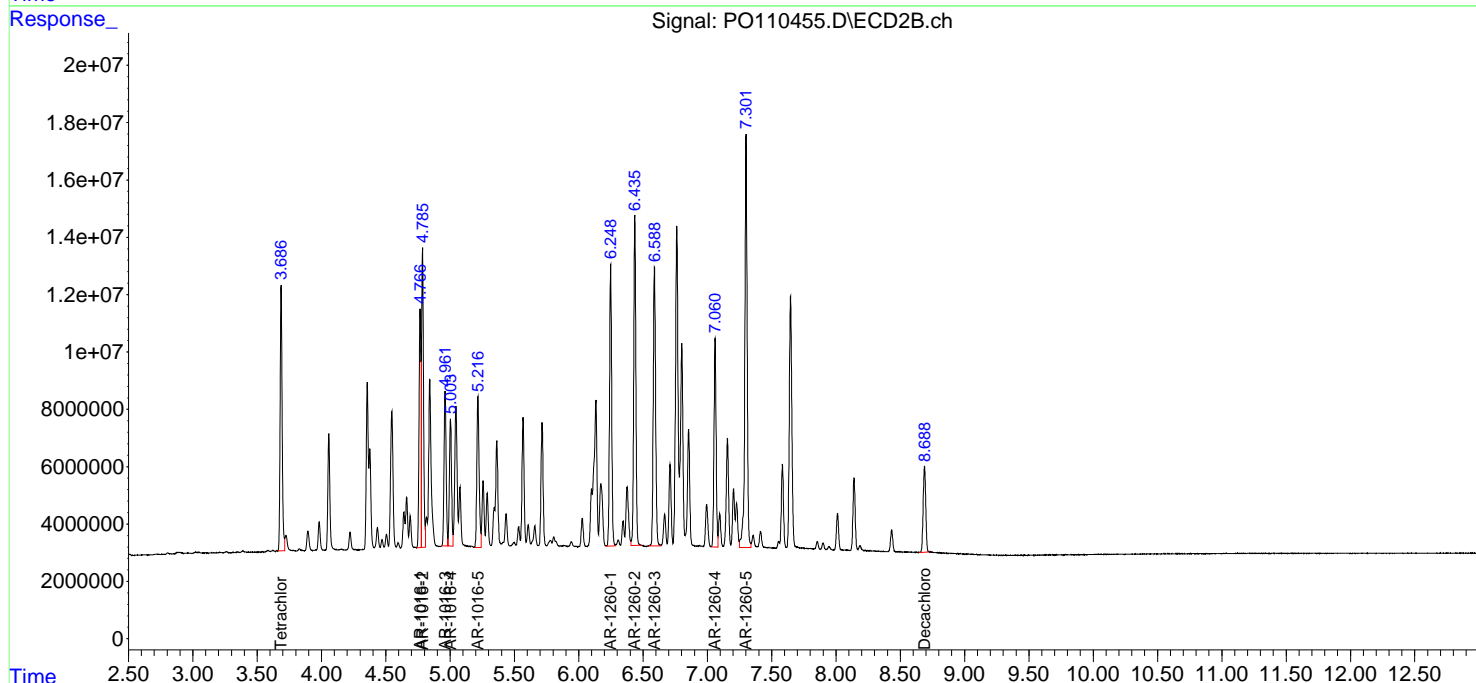
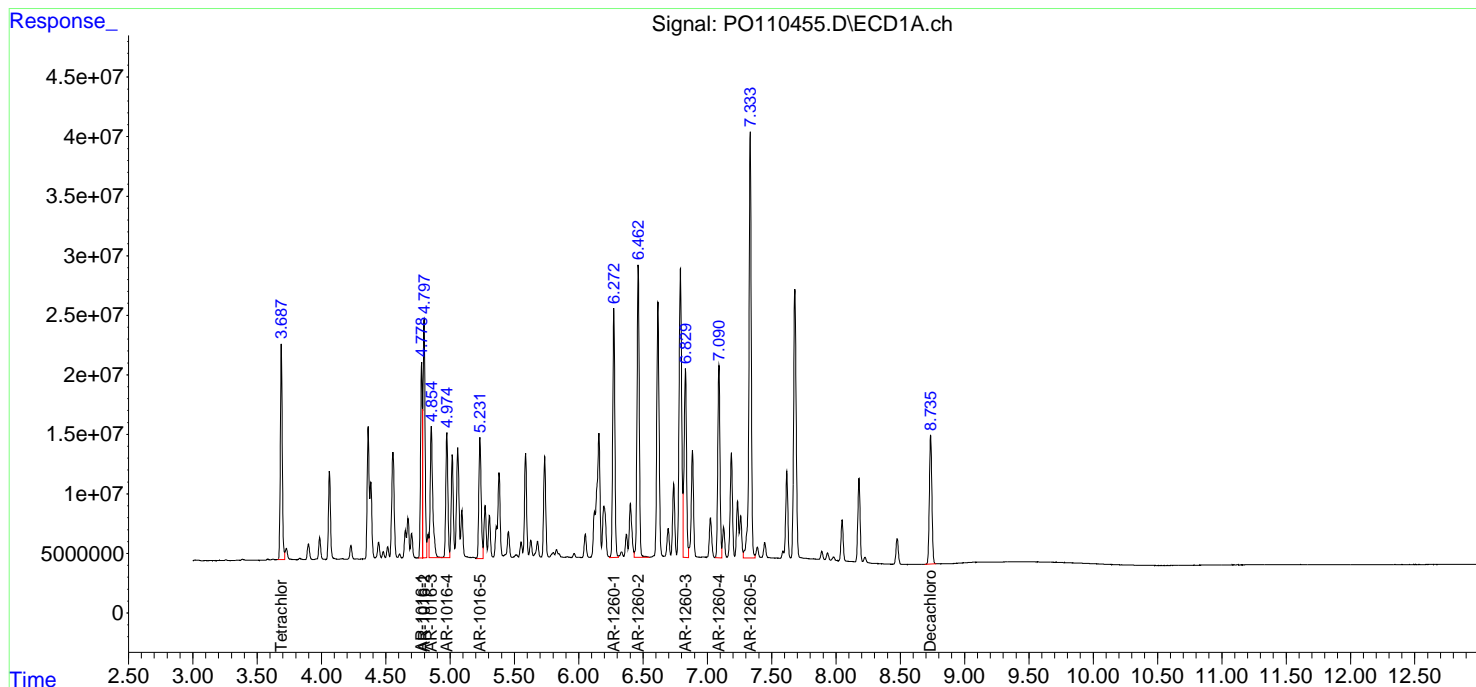
(f)=RT Delta > 1/2 Window (#)=Amounts differ by > 25% (m)=manual int.

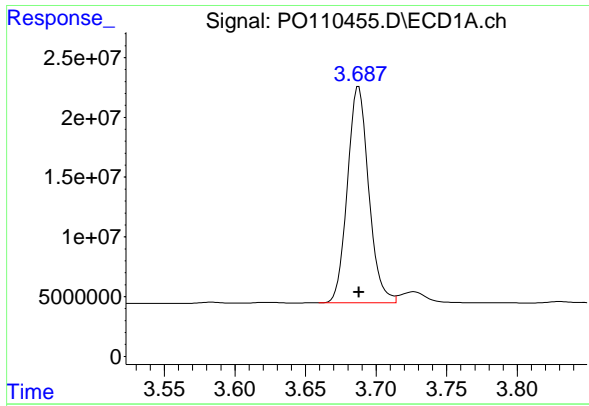
Data Path : Z:\pestpcbsrv\HPCHEM1\ECD_O\Data\PO041525\
 Data File : PO110455.D
 Signal(s) : Signal #1: ECD1A.ch Signal #2: ECD2B.ch
 Acq On : 15 Apr 2025 13:09
 Operator : YP/AJ
 Sample : PB167593BS
 Misc :
 ALS Vial : 9 Sample Multiplier: 1

Instrument :
 ECD_O
 ClientSampleId :
 PB167593BS

Integration File signal 1: autoint1.e
 Integration File signal 2: autoint2.e
 Quant Time: Apr 15 13:39:57 2025
 Quant Method : Z:\pestpcbsrv\HPCHEM1\ECD_O\methods\PO041025.M
 Quant Title : GC EXTRACTABLES
 QLast Update : Fri Apr 11 02:12:41 2025
 Response via : Initial Calibration
 Integrator: ChemStation

Volume Inj. : 2 µl
 Signal #1 Phase : ZB-MR1 Signal #2 Phase: ZB-MR2
 Signal #1 Info : 30Mx0.32mmx 0.50µm Signal #2 Info : 30M x 0.32mm x 0.25µm

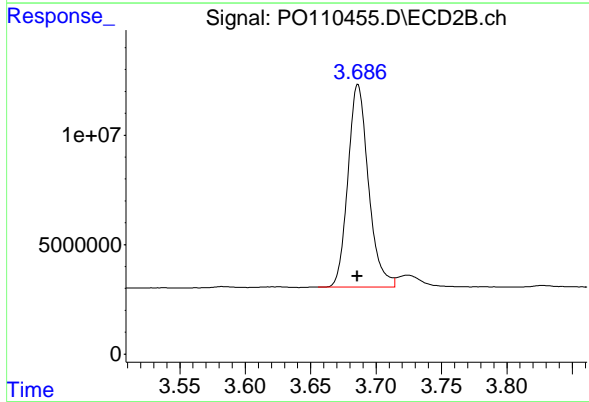




#1 Tetrachloro-m-xylene

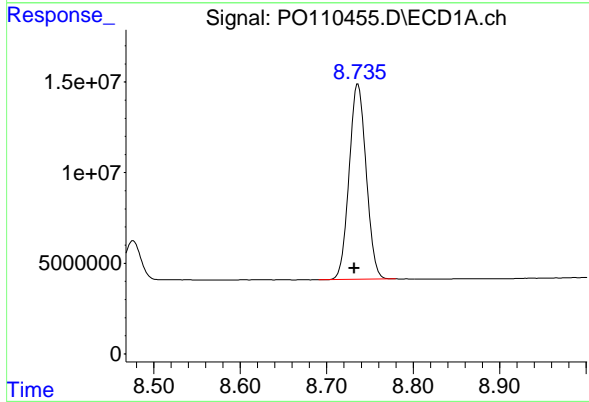
R.T.: 3.688 min
 Delta R.T.: 0.000 min
 Response: 189656153
 Conc: 21.68 ng/ml

Instrument :
 ECD_O
 ClientSampleId :
 PB167593BS



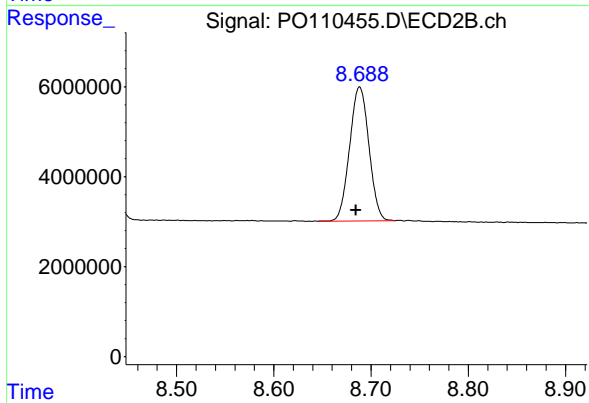
#1 Tetrachloro-m-xylene

R.T.: 3.686 min
 Delta R.T.: 0.000 min
 Response: 101110215
 Conc: 20.26 ng/ml



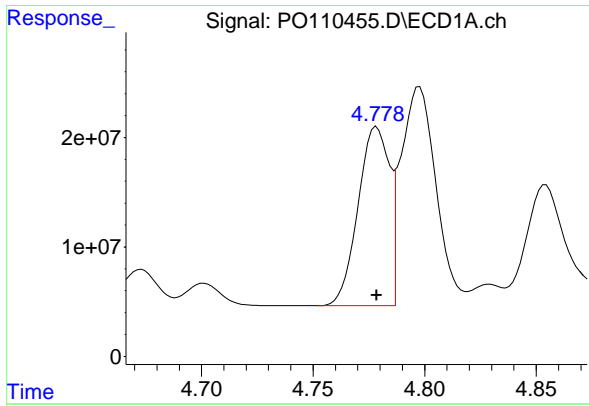
#2 Decachlorobiphenyl

R.T.: 8.736 min
 Delta R.T.: 0.004 min
 Response: 147428179
 Conc: 18.67 ng/ml



#2 Decachlorobiphenyl

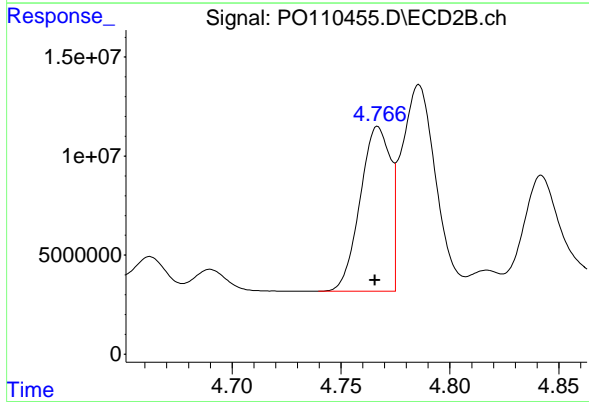
R.T.: 8.688 min
 Delta R.T.: 0.004 min
 Response: 41076080
 Conc: 21.34 ng/ml



#3 AR-1016-1

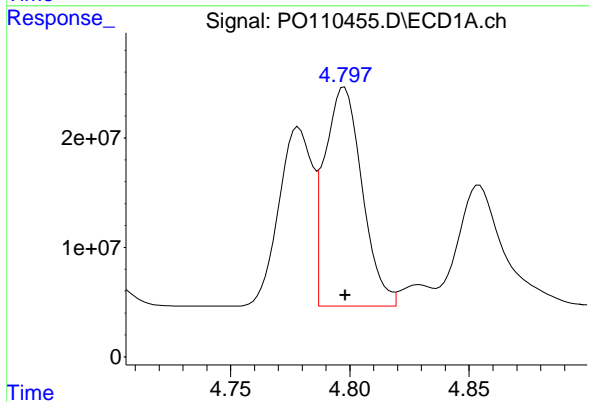
R.T.: 4.778 min
 Delta R.T.: 0.000 min
 Response: 159772820
 Conc: 486.90 ng/ml

Instrument :
 ECD_O
 ClientSampleId :
 PB167593BS



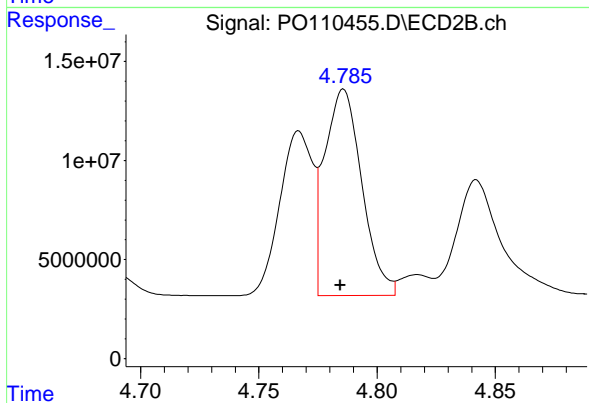
#3 AR-1016-1

R.T.: 4.767 min
 Delta R.T.: 0.001 min
 Response: 80533235
 Conc: 458.85 ng/ml



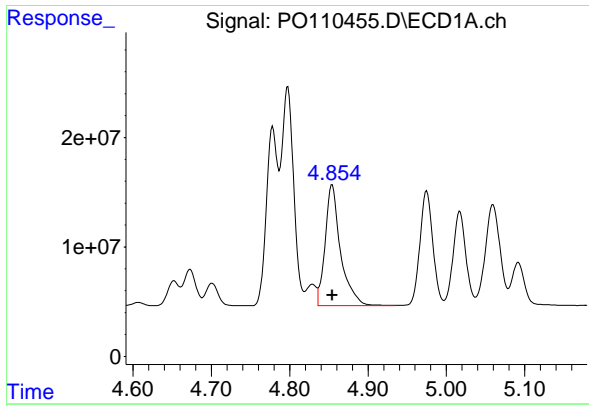
#4 AR-1016-2

R.T.: 4.798 min
 Delta R.T.: 0.000 min
 Response: 218378726
 Conc: 480.01 ng/ml



#4 AR-1016-2

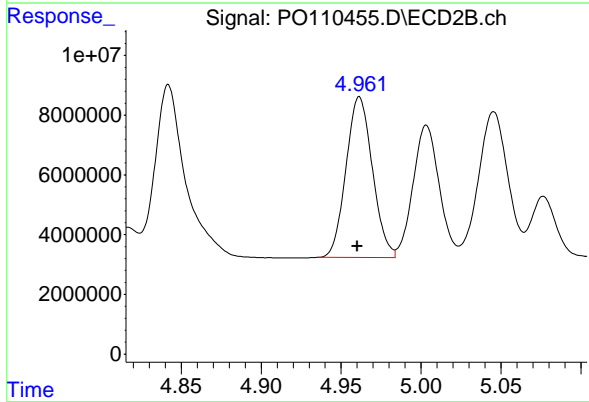
R.T.: 4.786 min
 Delta R.T.: 0.001 min
 Response: 114026381
 Conc: 453.45 ng/ml



#5 AR-1016-3

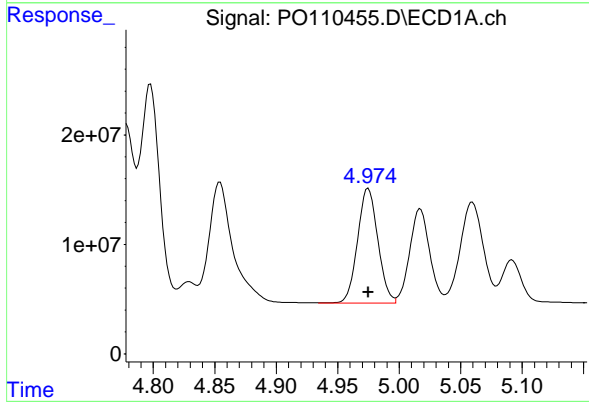
R.T.: 4.854 min
 Delta R.T.: 0.000 min
 Response: 151550888
 Conc: 469.89 ng/ml

Instrument :
 ECD_O
 ClientSampleId :
 PB167593BS



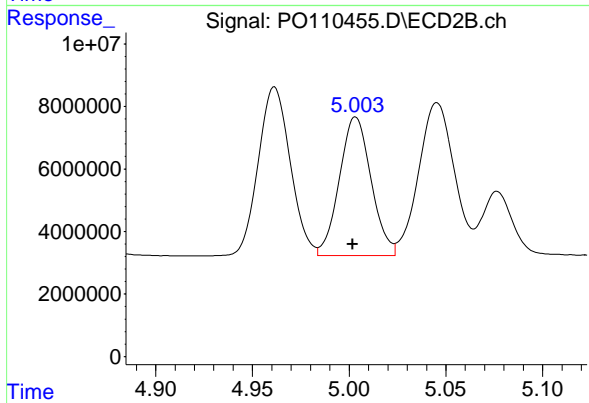
#5 AR-1016-3

R.T.: 4.961 min
 Delta R.T.: 0.001 min
 Response: 61806633
 Conc: 455.43 ng/ml



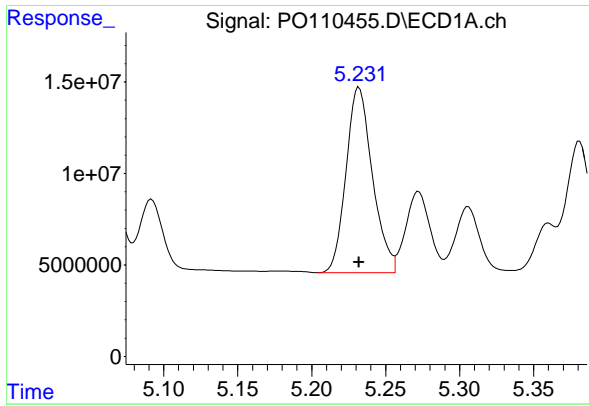
#6 AR-1016-4

R.T.: 4.975 min
 Delta R.T.: 0.000 min
 Response: 120232787
 Conc: 482.54 ng/ml



#6 AR-1016-4

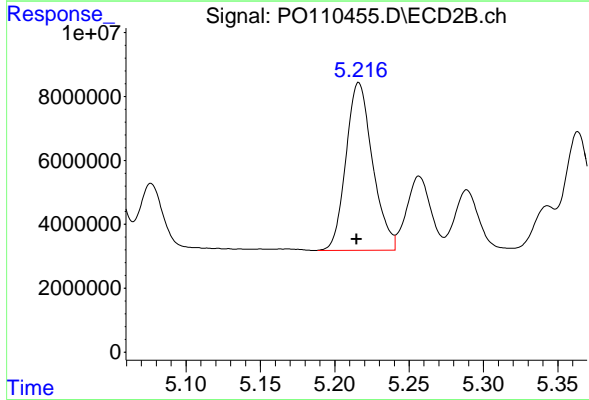
R.T.: 5.003 min
 Delta R.T.: 0.001 min
 Response: 50478867
 Conc: 441.37 ng/ml



#7 AR-1016-5

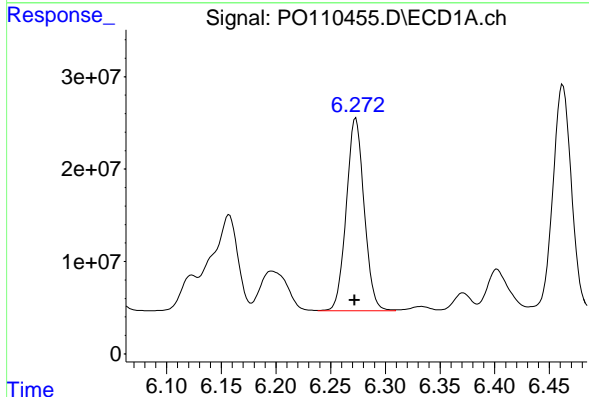
R.T.: 5.232 min
Delta R.T.: 0.000 min
Response: 125751359
Conc: 467.46 ng/ml

Instrument :
ECD_O
ClientSampleId :
PB167593BS



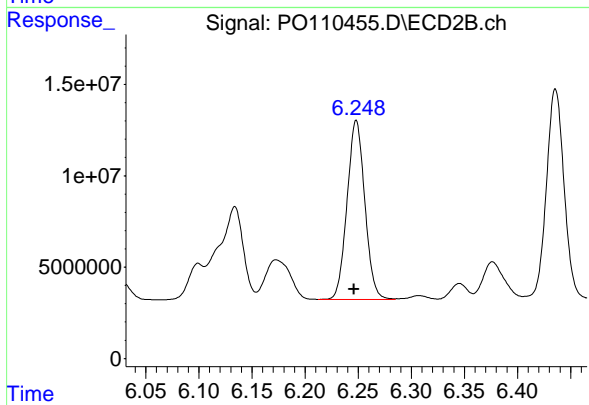
#7 AR-1016-5

R.T.: 5.216 min
Delta R.T.: 0.001 min
Response: 65415717
Conc: 438.81 ng/ml



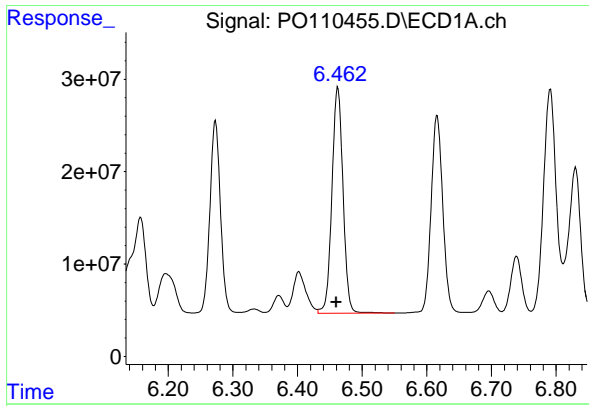
#31 AR-1260-1

R.T.: 6.273 min
Delta R.T.: 0.001 min
Response: 237649735
Conc: 503.02 ng/ml



#31 AR-1260-1

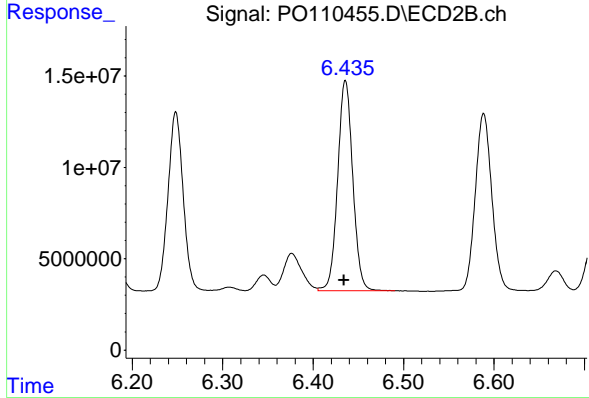
R.T.: 6.248 min
Delta R.T.: 0.002 min
Response: 114013695
Conc: 463.54 ng/ml



#32 AR-1260-2

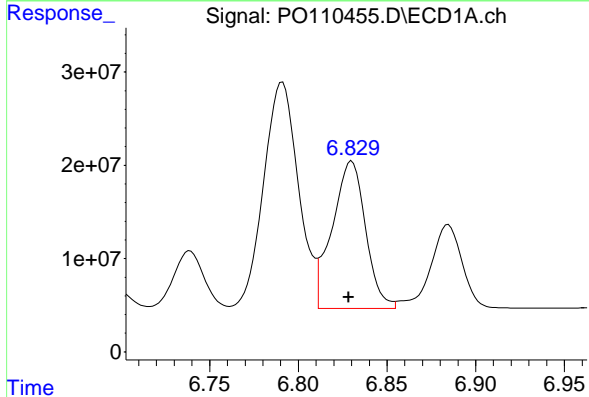
R.T.: 6.462 min
 Delta R.T.: 0.002 min
 Response: 292599953
 Conc: 498.96 ng/ml

Instrument :
 ECD_O
 ClientSampleId :
 PB167593BS



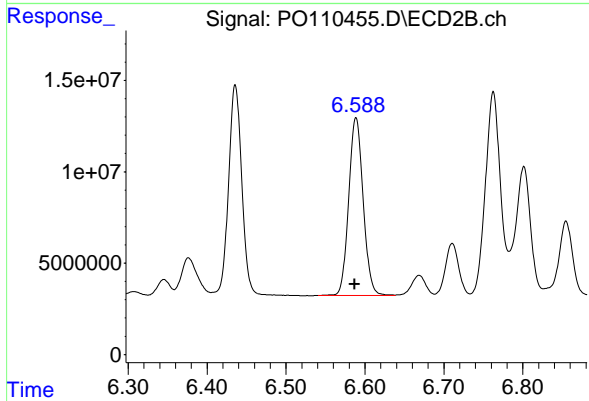
#32 AR-1260-2

R.T.: 6.436 min
 Delta R.T.: 0.002 min
 Response: 133587361
 Conc: 457.88 ng/ml



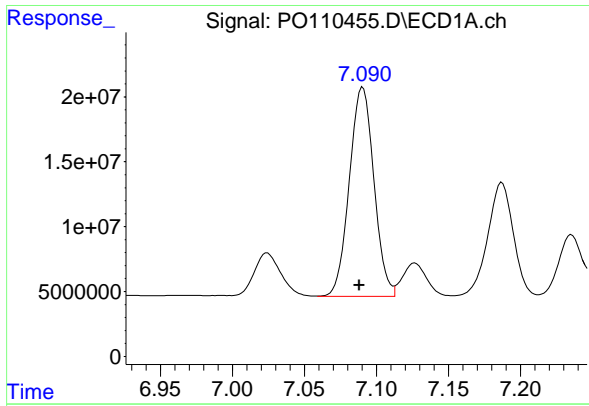
#33 AR-1260-3

R.T.: 6.830 min
 Delta R.T.: 0.002 min
 Response: 207455470
 Conc: 420.91 ng/ml



#33 AR-1260-3

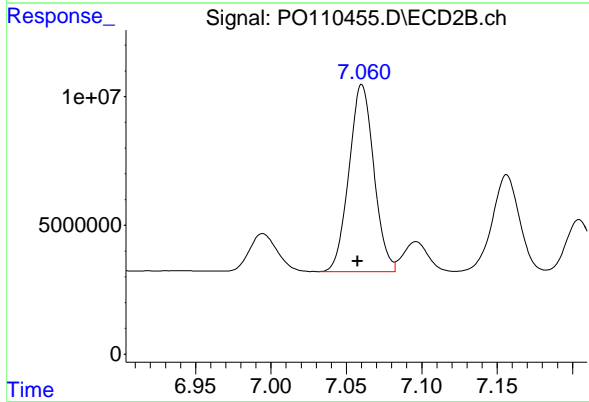
R.T.: 6.589 min
 Delta R.T.: 0.002 min
 Response: 123533086
 Conc: 456.04 ng/ml



#34 AR-1260-4

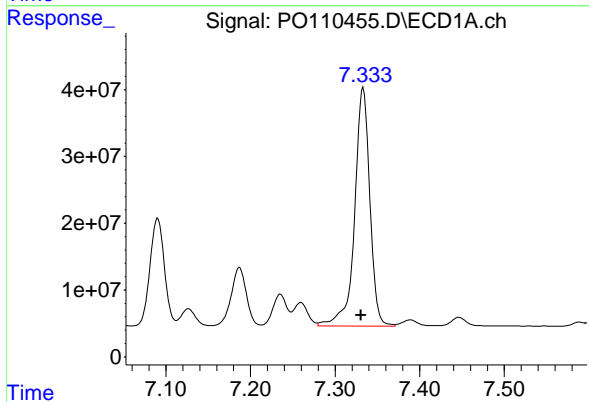
R.T.: 7.090 min
 Delta R.T.: 0.002 min
 Response: 190992733
 Conc: 450.01 ng/ml

Instrument :
 ECD_O
 ClientSampleId :
 PB167593BS



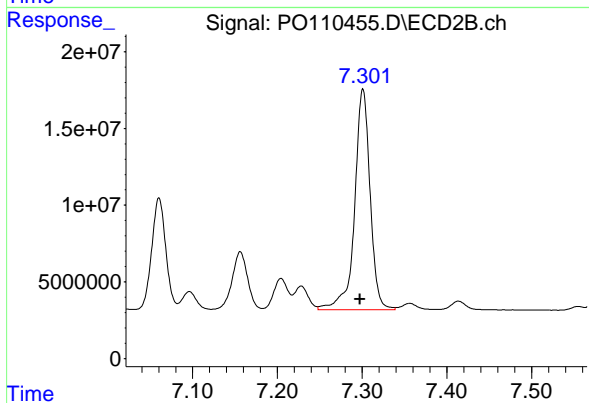
#34 AR-1260-4

R.T.: 7.060 min
 Delta R.T.: 0.003 min
 Response: 83590042
 Conc: 416.62 ng/ml



#35 AR-1260-5

R.T.: 7.333 min
 Delta R.T.: 0.003 min
 Response: 447325228
 Conc: 428.69 ng/ml



#35 AR-1260-5

R.T.: 7.301 min
 Delta R.T.: 0.004 min
 Response: 183081824
 Conc: 398.99 ng/ml