

Data Path : Z:\pestpcbsrv\HPCHEM1\ECD_O\Data\P0041624\
 Data File : P0102882.D
 Signal(s) : Signal #1: ECD1A.ch Signal #2: ECD2B.ch
 Acq On : 16 Apr 2024 17:55
 Operator : YP/AJ
 Sample : PB160285BS
 Misc :
 ALS Vial : 19 Sample Multiplier: 1

Instrument :
 ECD_O
 ClientSampleId :
 PB160285BS

Integration File signal 1: autoint1.e
 Integration File signal 2: autoint2.e
 Quant Time: Apr 17 02:49:08 2024
 Quant Method : Z:\pestpcbsrv\HPCHEM1\ECD_O\methods\P0041524.M
 Quant Title : GC EXTRACTABLES
 QLast Update : Tue Apr 16 04:30:22 2024
 Response via : Initial Calibration
 Integrator: ChemStation

Volume Inj. : 2 µl
 Signal #1 Phase : ZB-MR1 Signal #2 Phase: ZB-MR2
 Signal #1 Info : 30Mx0.32mmx 0.50µ Signal #2 Info : 30M x 0.32mm x 0.25µm

Compound	RT#1	RT#2	Resp#1	Resp#2	ng/ml	ng/ml

System Monitoring Compounds						
1) SA Tetrachlo...	4.259	3.376	95369878	50265814	15.294	12.897
2) SA Decachlor...	9.784	8.231	51688755	33054841	14.704	14.526
Target Compounds						
3) L1 AR-1016-1	5.402	4.425	61464515	35948340	346.754	331.732
4) L1 AR-1016-2	5.423	4.442	90399520	53461979	343.967	331.127
5) L1 AR-1016-3	5.484	4.614	57371719	28298767	368.905	330.379
6) L1 AR-1016-4	5.581	4.654	45639599	24560817	343.006	321.507
7) L1 AR-1016-5	5.870	4.862	42581584	30455297	335.612	322.094
8) L2 AR-1221-1	4.459	3.581	6504537	3619309	134.394	115.553
9) L2 AR-1221-2	4.547	3.665	8702484	4548313	232.125	196.424
10) L2 AR-1221-3	4.622	3.738	36077238	20590387	323.347	294.760
11) L3 AR-1232-1	4.622	3.738	36077238	20590387	371.929	348.896
12) L3 AR-1232-2	5.139	4.442	49746552	53461979	934.129	941.571
13) L3 AR-1232-3	5.423	4.614	90399520	28298767	993.085	954.112
14) L3 AR-1232-4	5.581	4.695	45639599	29627283	1004.288	1001.971
15) L3 AR-1232-5	5.670	4.862	41808257	30455297	1077.811	966.626
16) L4 AR-1242-1	5.402	4.425	61464515	35948340	633.842	592.803
17) L4 AR-1242-2	5.423	4.442	90399520	53461979	630.429	606.251
18) L4 AR-1242-3	5.484	4.614	57371719	28298767	622.490	609.492
19) L4 AR-1242-4	5.581	4.695	45639599	29627283	628.755	564.330
20) L4 AR-1242-5	6.306	5.205	5870281	24472443	90.006	410.376 #
21) L5 AR-1248-1	5.402	4.425	61464515	35948340	820.116	746.014
22) L5 AR-1248-2	5.670	4.654	41808257	24560817	351.563	325.102
23) L5 AR-1248-3	5.870	4.695	42581584	29627283	347.378	380.425
24) L5 AR-1248-4	6.267	4.862	5849654	30455297	49.797	338.068 #
25) L5 AR-1248-5	6.306	5.246	5870281	3608282	51.555	48.602
26) L6 AR-1254-1	6.242	5.205	32707251	24472443	204.339	168.041
27) L6 AR-1254-2	6.456	5.350	33685991	23304653	152.373	175.632
28) L6 AR-1254-3	6.819	5.759	16610909	39734536	74.987	208.196 #
29) L6 AR-1254-4	7.100	5.971	11183197	3787063	80.282	38.230 #
30) L6 AR-1254-5	7.513	6.381	93474875	71105119	557.255	423.665
31) L7 AR-1260-1	6.980	5.872	72051598	56527927	331.804	323.946
32) L7 AR-1260-2	7.233	6.059	79982689	67042484	337.246	352.754
33) L7 AR-1260-3	7.588	6.208	50300602	61285084	335.395	317.532
34) L7 AR-1260-4	7.812	6.671	60339091	43637576	341.569	332.983
35) L7 AR-1260-5	8.116	6.913	111.7E6	98580303	359.279	340.107
36) L8 AR-1262-1	7.513	6.381	93474875	71105119	911.129	1086.706
37) L8 AR-1262-2	8.116	6.671	111.7E6	43637576	444.788	316.724 #
38) L8 AR-1262-3	8.422	7.190	70602322	18480761	368.462	193.199 #
39) L8 AR-1262-4	8.490	7.254	15027929	68837420	100.448	397.542 #
40) L8 AR-1262-5	9.100	7.744	26424581	19809877	295.524	290.150
41) L9 AR-1268-1	8.422	7.190	70602322	18480761	210.803	63.512 #

Data Path : Z:\pestpcbsrv\HPCHEM1\ECD_O\Data\P0041624\
 Data File : P0102882.D
 Signal(s) : Signal #1: ECD1A.ch Signal #2: ECD2B.ch
 Acq On : 16 Apr 2024 17:55
 Operator : YP/AJ
 Sample : PB160285BS
 Misc :
 ALS Vial : 19 Sample Multiplier: 1

Instrument :
 ECD_O
ClientSampleId :
 PB160285BS

Integration File signal 1: autoint1.e
 Integration File signal 2: autoint2.e
 Quant Time: Apr 17 02:49:08 2024
 Quant Method : Z:\pestpcbsrv\HPCHEM1\ECD_O\methods\P0041524.M
 Quant Title : GC EXTRACTABLES
 QLast Update : Tue Apr 16 04:30:22 2024
 Response via : Initial Calibration
 Integrator: ChemStation

Volume Inj. : 2 µl
 Signal #1 Phase : ZB-MR1 Signal #2 Phase: ZB-MR2
 Signal #1 Info : 30Mx0.32mmx 0.50µ Signal #2 Info : 30M x 0.32mm x 0.25µm

	Compound	RT#1	RT#2	Resp#1	Resp#2	ng/ml	ng/ml
42)	L9 AR-1268-2	8.490	7.254	15027929	68837420	48.999	254.803 #
43)	L9 AR-1268-3	8.704	7.453	2029296	1829883	7.398	7.757
44)	L9 AR-1268-4	9.100	8.010	26424581	6982461	257.549	11.374 #
45)	L9 AR-1268-5	9.478	8.231	9349263	33054841	10.816	114.106 #

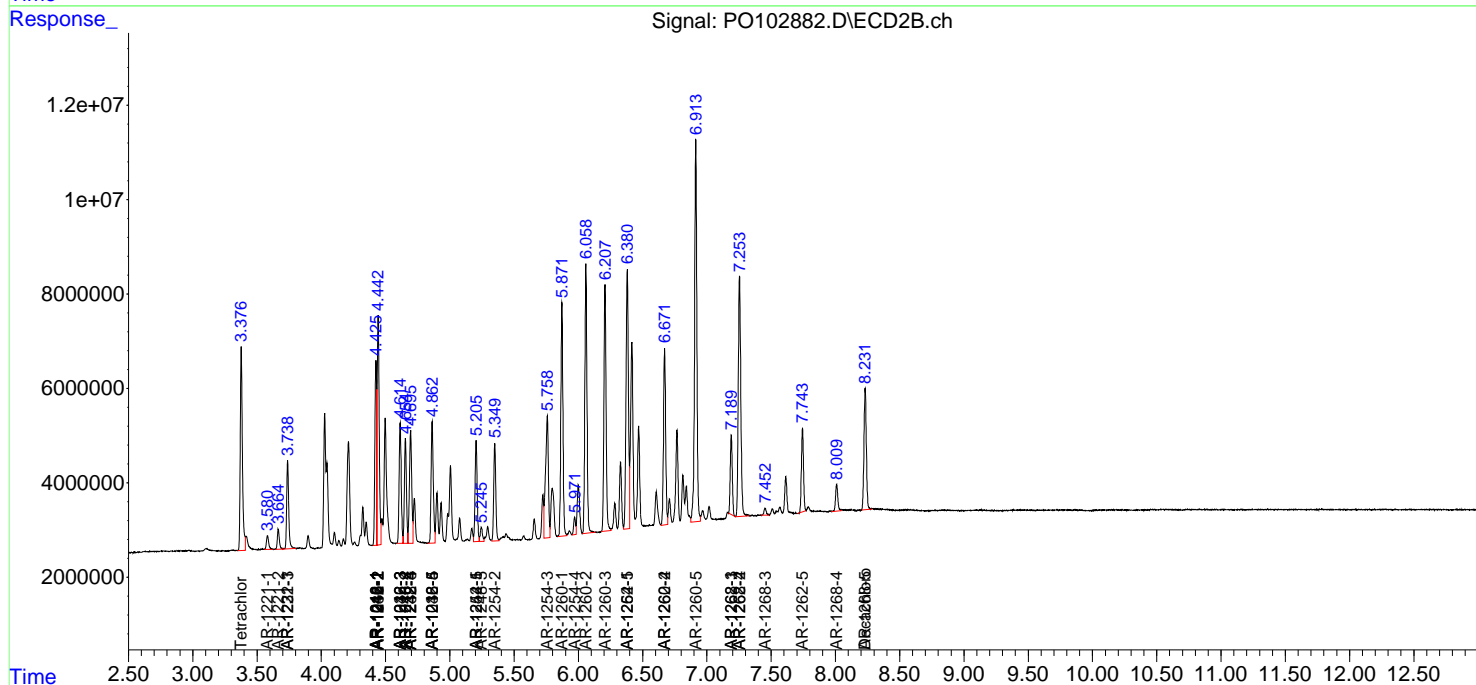
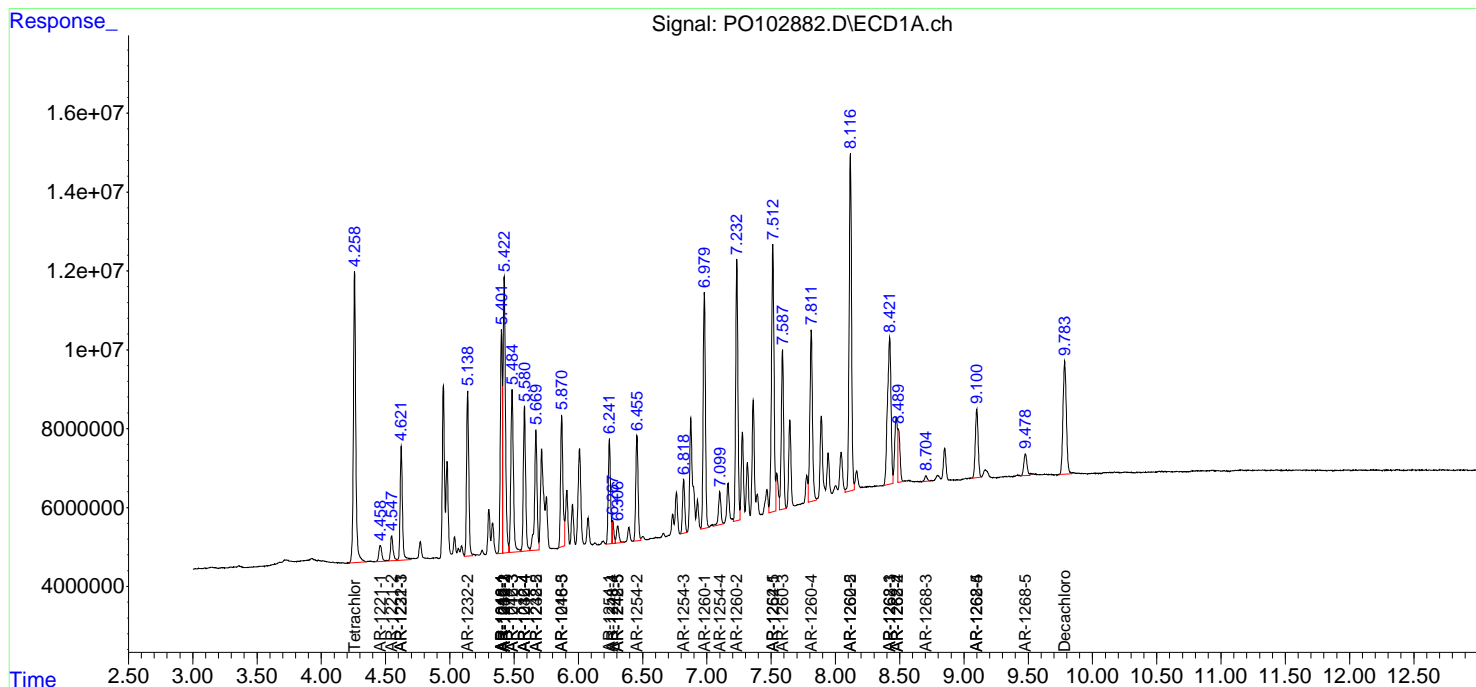
(f)=RT Delta > 1/2 Window (#)=Amounts differ by > 25% (m)=manual int.

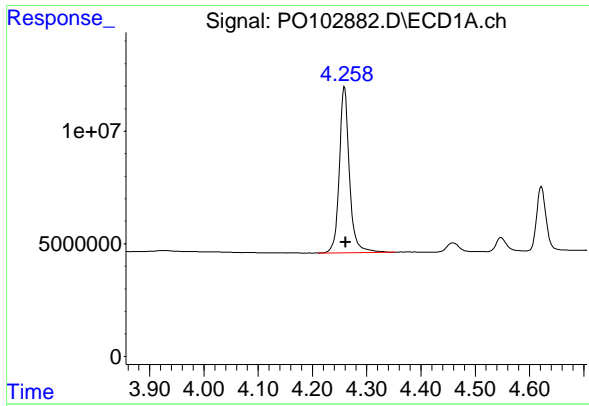
Data Path : Z:\pestpcbsrv\HPCHEM1\ECD_O\Data\PO041624\
 Data File : PO102882.D
 Signal(s) : Signal #1: ECD1A.ch Signal #2: ECD2B.ch
 Acq On : 16 Apr 2024 17:55
 Operator : YP/AJ
 Sample : PB160285BS
 Misc :
 ALS Vial : 19 Sample Multiplier: 1

Instrument :
 ECD_O
 ClientSampleId :
 PB160285BS

Integration File signal 1: autoint1.e
 Integration File signal 2: autoint2.e
 Quant Time: Apr 17 02:49:08 2024
 Quant Method : Z:\pestpcbsrv\HPCHEM1\ECD_O\methods\PO041524.M
 Quant Title : GC EXTRACTABLES
 QLast Update : Tue Apr 16 04:30:22 2024
 Response via : Initial Calibration
 Integrator: ChemStation

Volume Inj. : 2 µl
 Signal #1 Phase : ZB-MR1 Signal #2 Phase: ZB-MR2
 Signal #1 Info : 30Mx0.32mmx 0.50µm Signal #2 Info : 30M x 0.32mm x 0.25µm

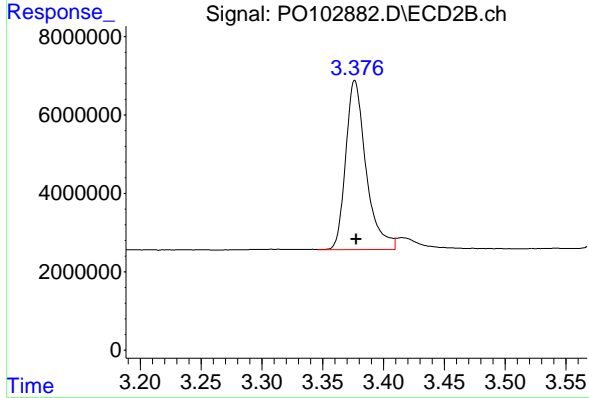




#1 Tetrachloro-m-xylene

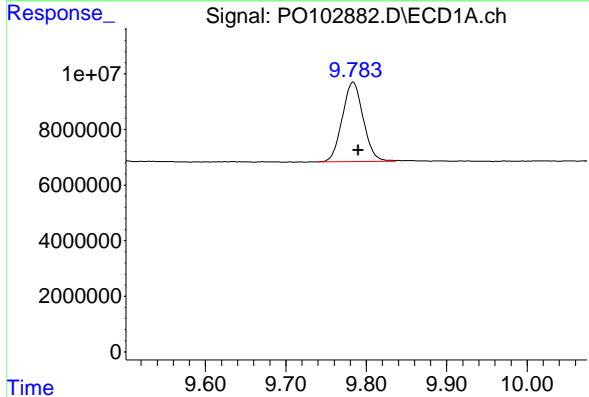
R.T.: 4.259 min
 Delta R.T.: -0.002 min
 Response: 95369878
 Conc: 15.29 ng/ml

Instrument :
 ECD_O
 ClientSampleId :
 PB160285BS



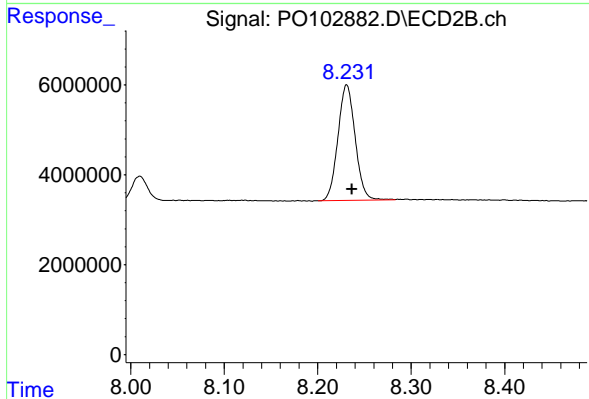
#1 Tetrachloro-m-xylene

R.T.: 3.376 min
 Delta R.T.: 0.000 min
 Response: 50265814
 Conc: 12.90 ng/ml



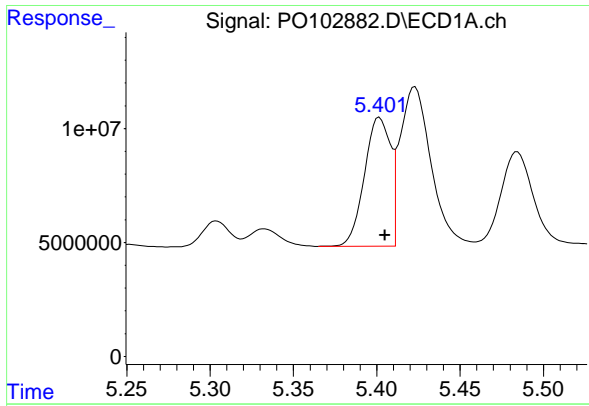
#2 Decachlorobiphenyl

R.T.: 9.784 min
 Delta R.T.: -0.006 min
 Response: 51688755
 Conc: 14.70 ng/ml



#2 Decachlorobiphenyl

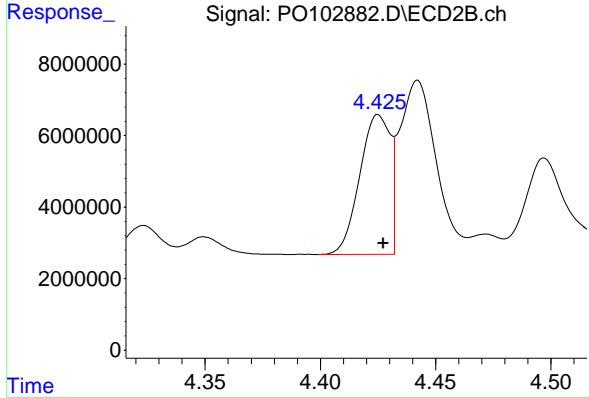
R.T.: 8.231 min
 Delta R.T.: -0.006 min
 Response: 33054841
 Conc: 14.53 ng/ml



#3 AR-1016-1

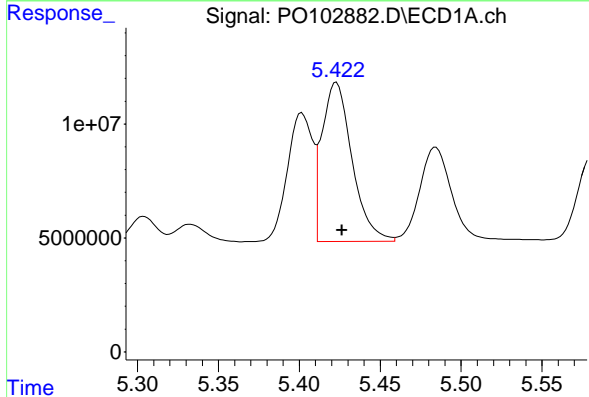
R.T.: 5.402 min
 Delta R.T.: -0.003 min
 Response: 61464515
 Conc: 346.75 ng/ml

Instrument :
 ECD_O
 ClientSampleId :
 PB160285BS



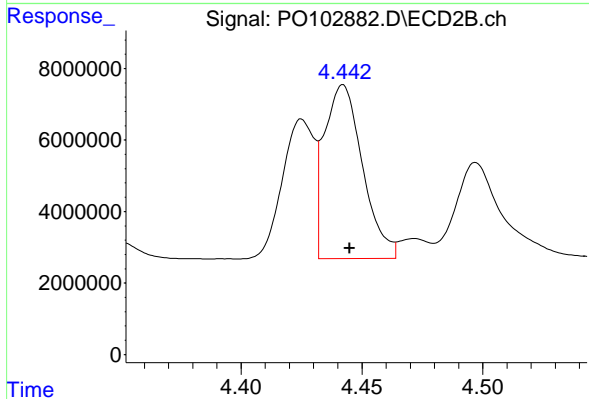
#3 AR-1016-1

R.T.: 4.425 min
 Delta R.T.: -0.002 min
 Response: 35948340
 Conc: 331.73 ng/ml



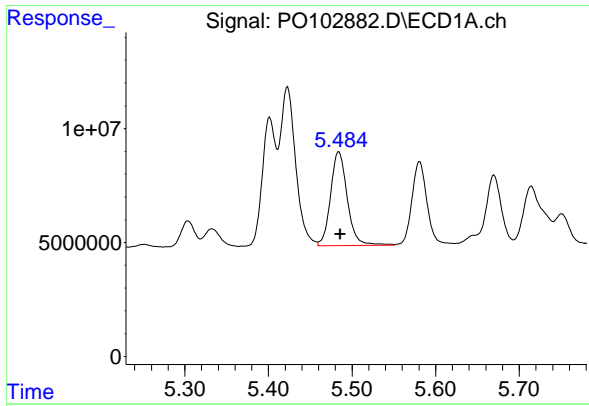
#4 AR-1016-2

R.T.: 5.423 min
 Delta R.T.: -0.003 min
 Response: 90399520
 Conc: 343.97 ng/ml



#4 AR-1016-2

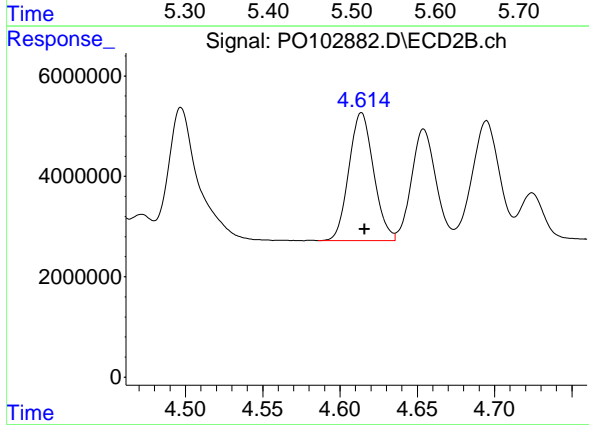
R.T.: 4.442 min
 Delta R.T.: -0.003 min
 Response: 53461979
 Conc: 331.13 ng/ml



#5 AR-1016-3

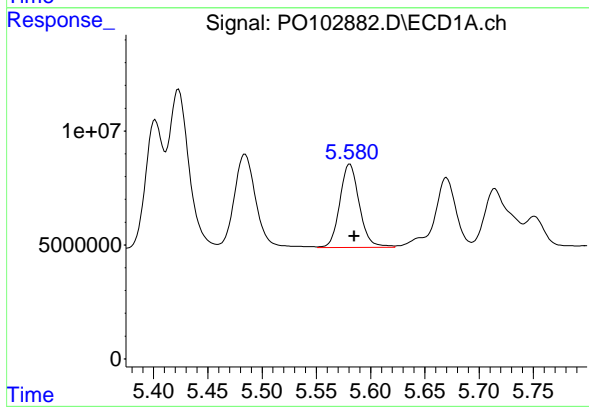
R.T.: 5.484 min
 Delta R.T.: -0.002 min
 Response: 57371719
 Conc: 368.91 ng/ml

Instrument :
 ECD_O
 ClientSampleId :
 PB160285BS



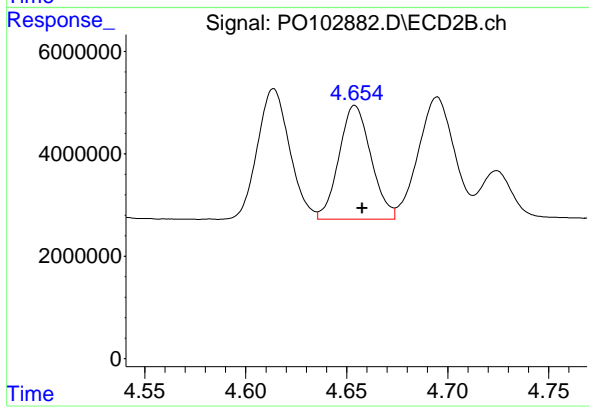
#5 AR-1016-3

R.T.: 4.614 min
 Delta R.T.: -0.002 min
 Response: 28298767
 Conc: 330.38 ng/ml



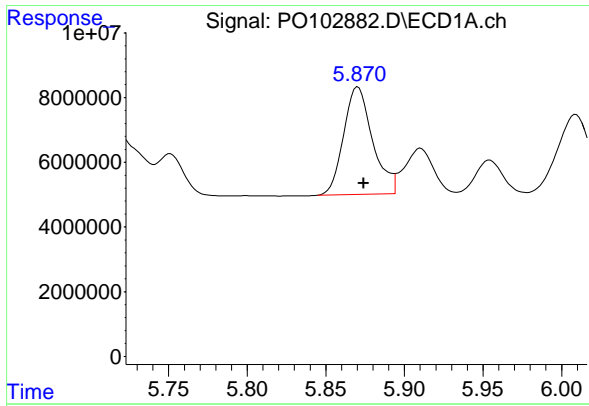
#6 AR-1016-4

R.T.: 5.581 min
 Delta R.T.: -0.004 min
 Response: 45639599
 Conc: 343.01 ng/ml



#6 AR-1016-4

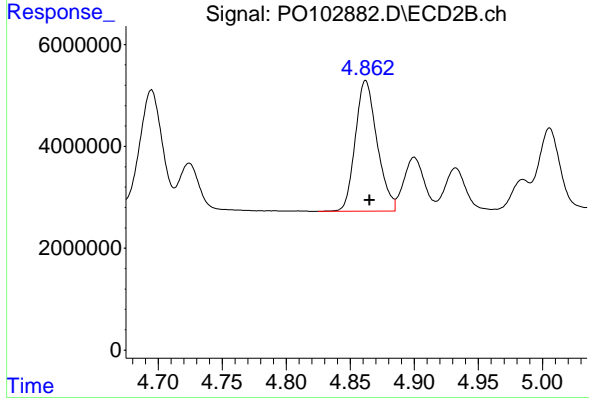
R.T.: 4.654 min
 Delta R.T.: -0.004 min
 Response: 24560817
 Conc: 321.51 ng/ml



#7 AR-1016-5

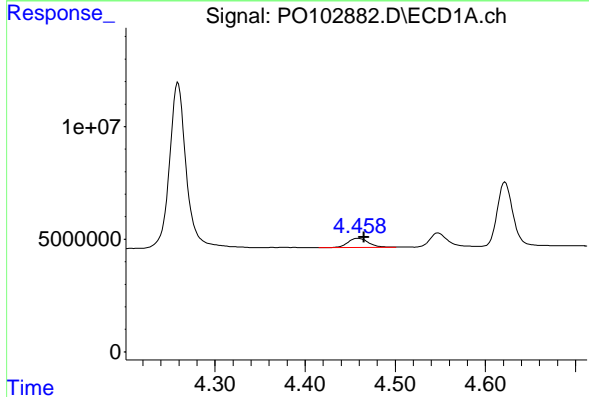
R.T.: 5.870 min
 Delta R.T.: -0.004 min
 Response: 42581584
 Conc: 335.61 ng/ml

Instrument :
 ECD_O
 ClientSampleId :
 PB160285BS



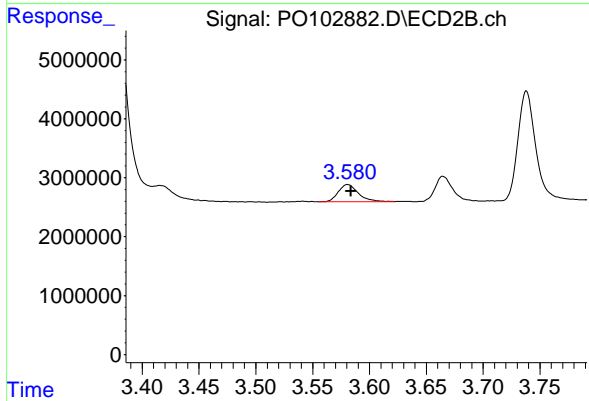
#7 AR-1016-5

R.T.: 4.862 min
 Delta R.T.: -0.003 min
 Response: 30455297
 Conc: 322.09 ng/ml



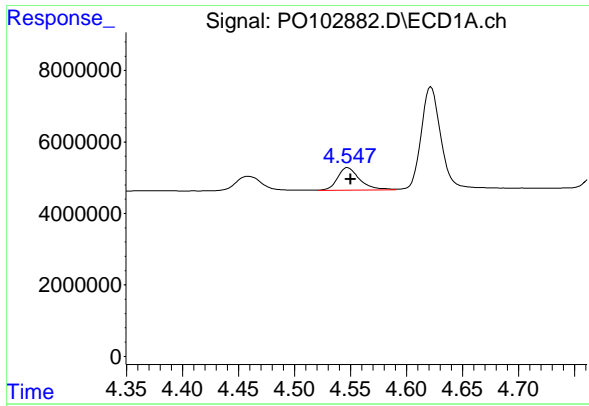
#8 AR-1221-1

R.T.: 4.459 min
 Delta R.T.: -0.007 min
 Response: 6504537
 Conc: 134.39 ng/ml



#8 AR-1221-1

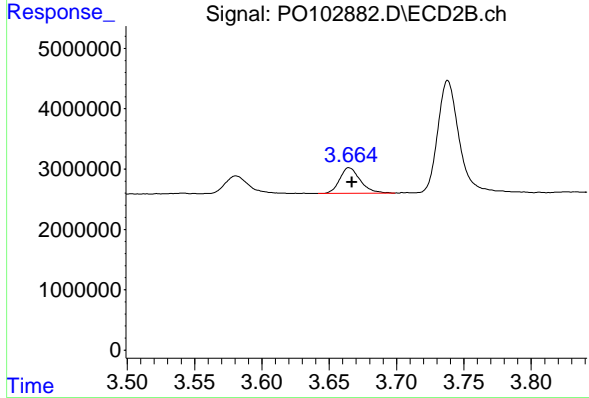
R.T.: 3.581 min
 Delta R.T.: -0.003 min
 Response: 3619309
 Conc: 115.55 ng/ml



#9 AR-1221-2

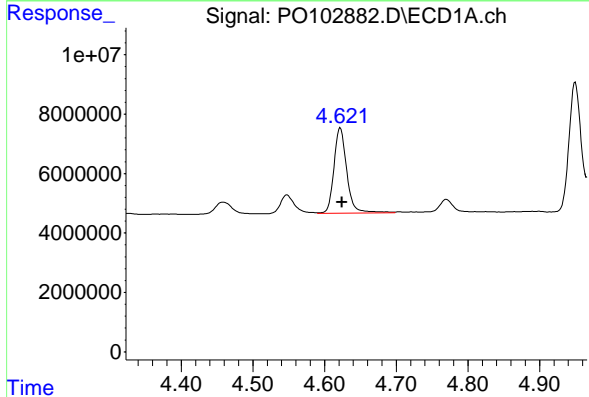
R.T.: 4.547 min
 Delta R.T.: -0.003 min
 Response: 8702484
 Conc: 232.12 ng/ml

Instrument :
 ECD_O
 ClientSampleId :
 PB160285BS



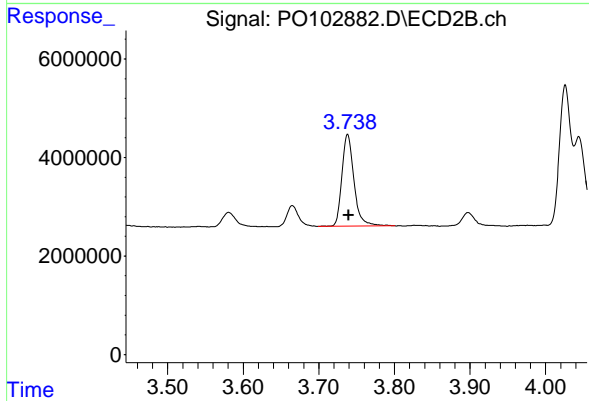
#9 AR-1221-2

R.T.: 3.665 min
 Delta R.T.: -0.002 min
 Response: 4548313
 Conc: 196.42 ng/ml



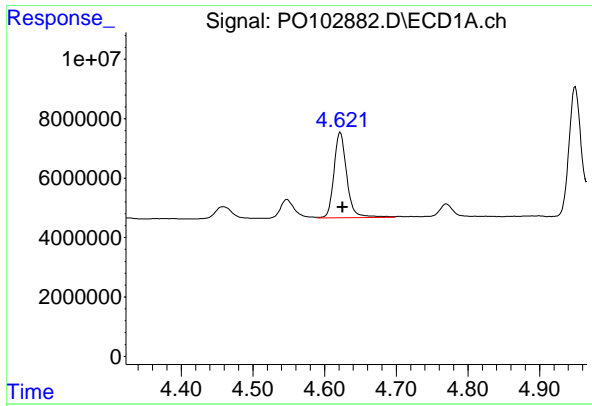
#10 AR-1221-3

R.T.: 4.622 min
 Delta R.T.: -0.003 min
 Response: 36077238
 Conc: 323.35 ng/ml



#10 AR-1221-3

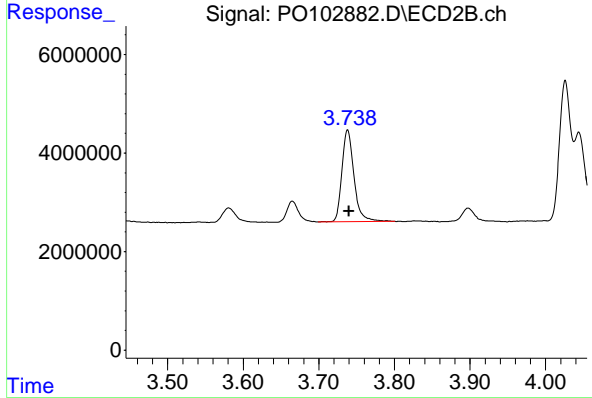
R.T.: 3.738 min
 Delta R.T.: -0.002 min
 Response: 20590387
 Conc: 294.76 ng/ml



#11 AR-1232-1

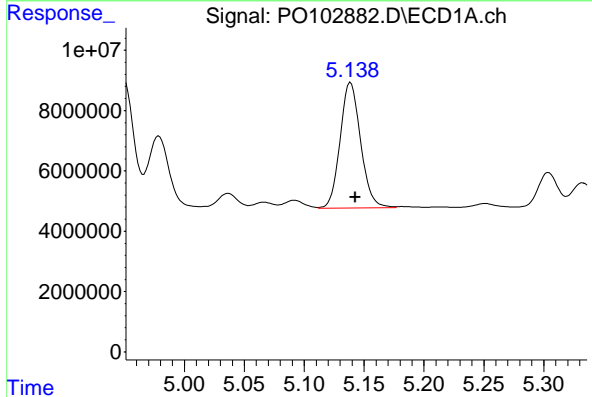
R.T.: 4.622 min
 Delta R.T.: -0.003 min
 Response: 36077238
 Conc: 371.93 ng/ml

Instrument :
 ECD_O
 ClientSampleId :
 PB160285BS



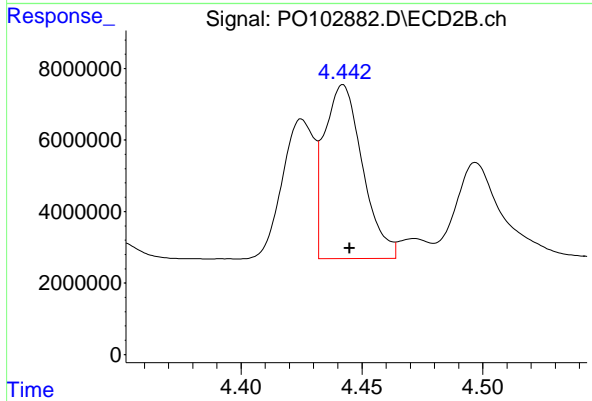
#11 AR-1232-1

R.T.: 3.738 min
 Delta R.T.: -0.002 min
 Response: 20590387
 Conc: 348.90 ng/ml



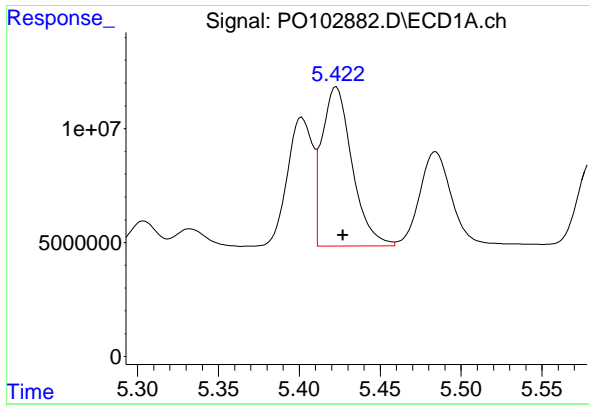
#12 AR-1232-2

R.T.: 5.139 min
 Delta R.T.: -0.004 min
 Response: 49746552
 Conc: 934.13 ng/ml



#12 AR-1232-2

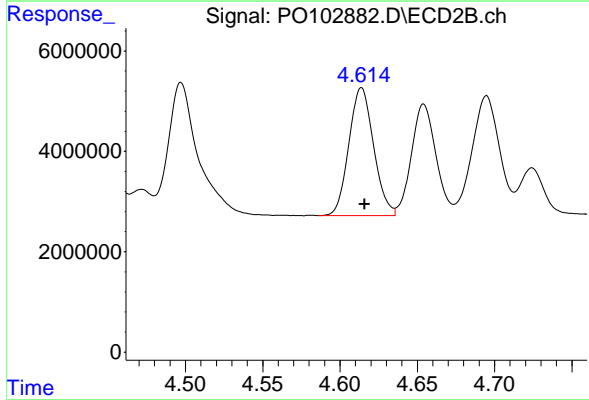
R.T.: 4.442 min
 Delta R.T.: -0.003 min
 Response: 53461979
 Conc: 941.57 ng/ml



#13 AR-1232-3

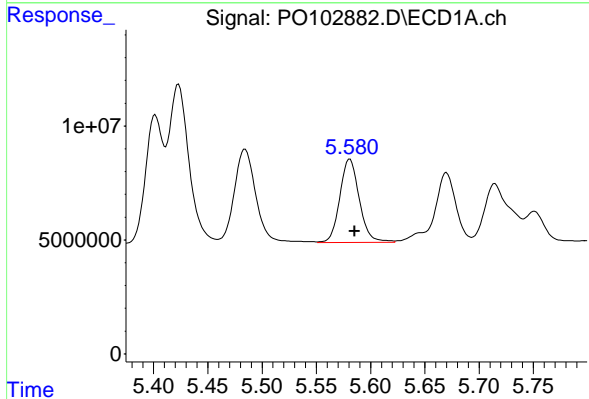
R.T.: 5.423 min
 Delta R.T.: -0.004 min
 Response: 90399520
 Conc: 993.08 ng/ml

Instrument :
 ECD_O
 ClientSampleId :
 PB160285BS



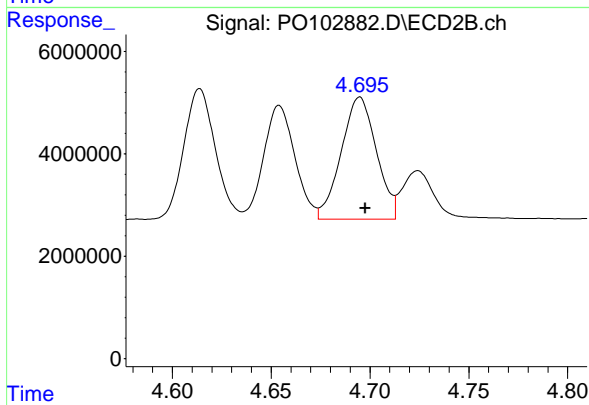
#13 AR-1232-3

R.T.: 4.614 min
 Delta R.T.: -0.002 min
 Response: 28298767
 Conc: 954.11 ng/ml



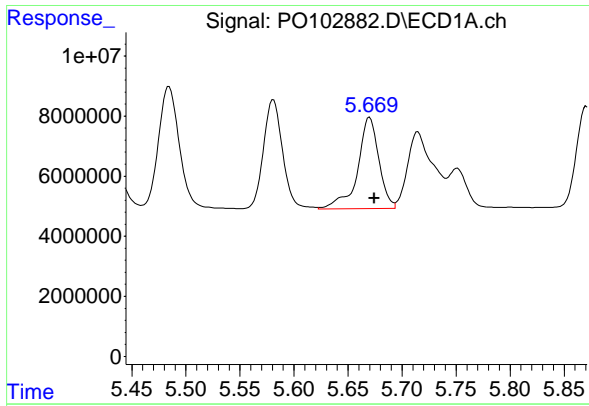
#14 AR-1232-4

R.T.: 5.581 min
 Delta R.T.: -0.004 min
 Response: 45639599
 Conc: 1004.29 ng/ml



#14 AR-1232-4

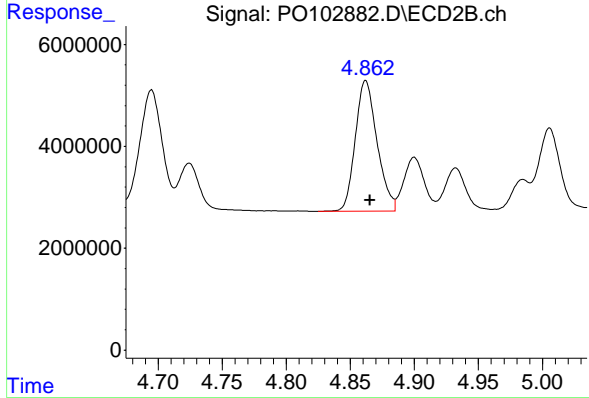
R.T.: 4.695 min
 Delta R.T.: -0.003 min
 Response: 29627283
 Conc: 1001.97 ng/ml



#15 AR-1232-5

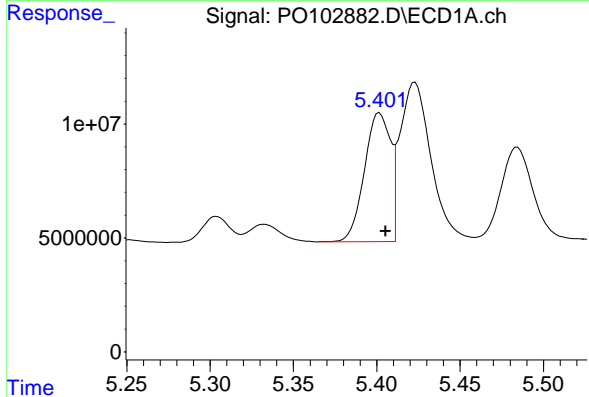
R.T.: 5.670 min
 Delta R.T.: -0.005 min
 Response: 41808257
 Conc: 1077.81 ng/ml

Instrument :
 ECD_O
 ClientSampleId :
 PB160285BS



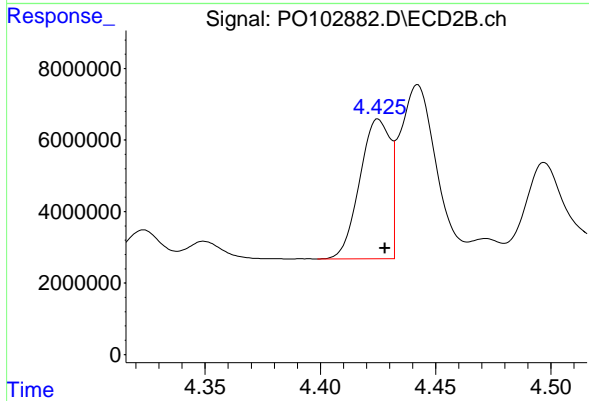
#15 AR-1232-5

R.T.: 4.862 min
 Delta R.T.: -0.003 min
 Response: 30455297
 Conc: 966.63 ng/ml



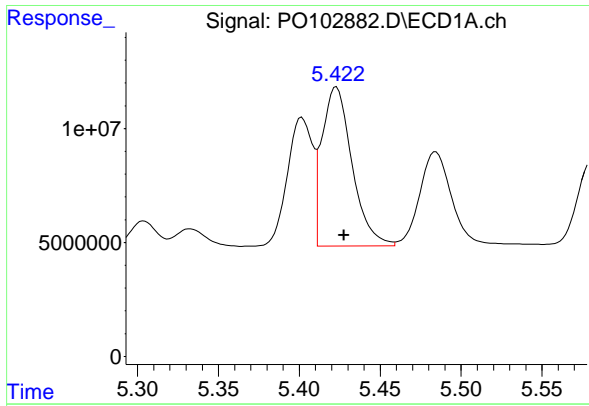
#16 AR-1242-1

R.T.: 5.402 min
 Delta R.T.: -0.004 min
 Response: 61464515
 Conc: 633.84 ng/ml



#16 AR-1242-1

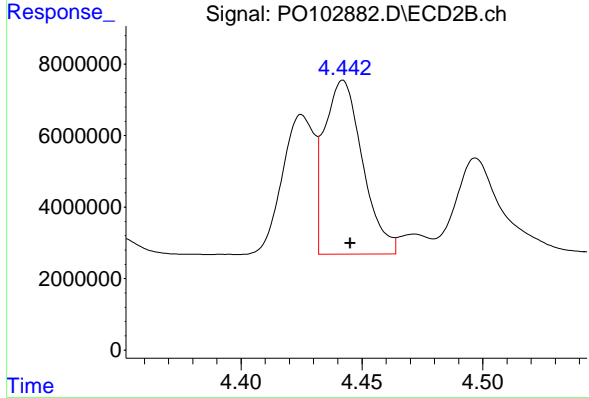
R.T.: 4.425 min
 Delta R.T.: -0.003 min
 Response: 35948340
 Conc: 592.80 ng/ml



#17 AR-1242-2

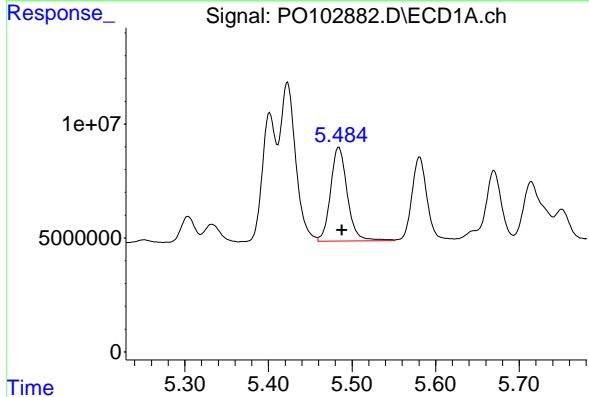
R.T.: 5.423 min
 Delta R.T.: -0.005 min
 Response: 90399520
 Conc: 630.43 ng/ml

Instrument :
 ECD_O
 ClientSampleId :
 PB160285BS



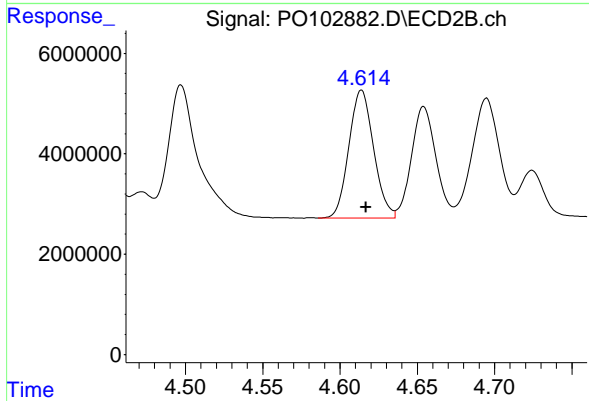
#17 AR-1242-2

R.T.: 4.442 min
 Delta R.T.: -0.003 min
 Response: 53461979
 Conc: 606.25 ng/ml



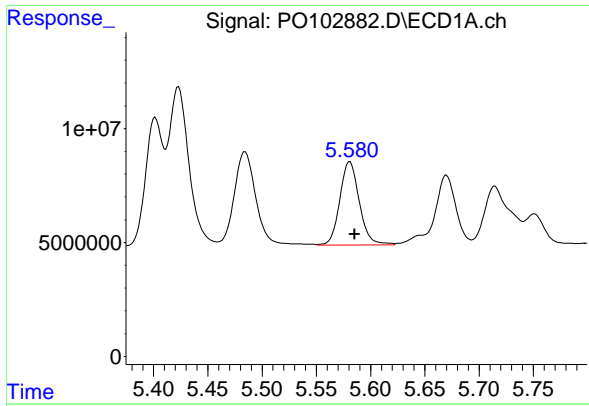
#18 AR-1242-3

R.T.: 5.484 min
 Delta R.T.: -0.004 min
 Response: 57371719
 Conc: 622.49 ng/ml



#18 AR-1242-3

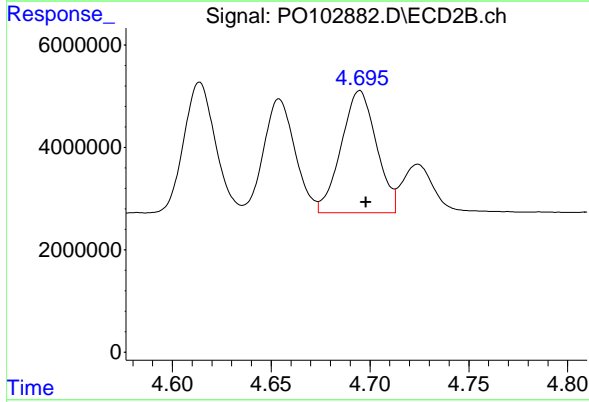
R.T.: 4.614 min
 Delta R.T.: -0.003 min
 Response: 28298767
 Conc: 609.49 ng/ml



#19 AR-1242-4

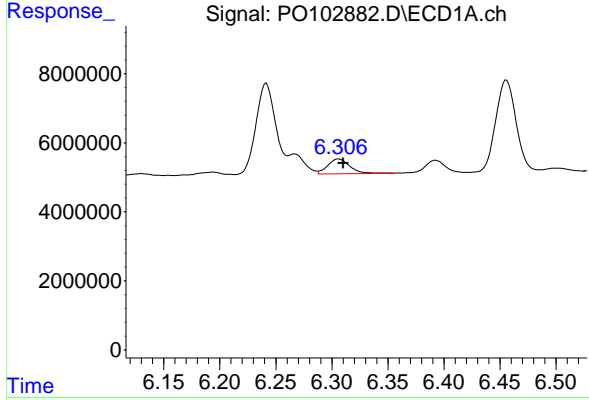
R.T.: 5.581 min
 Delta R.T.: -0.004 min
 Response: 45639599
 Conc: 628.76 ng/ml

Instrument :
 ECD_O
 ClientSampleId :
 PB160285BS



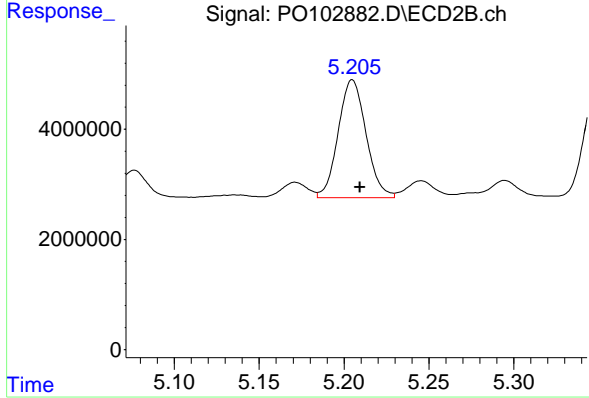
#19 AR-1242-4

R.T.: 4.695 min
 Delta R.T.: -0.003 min
 Response: 29627283
 Conc: 564.33 ng/ml



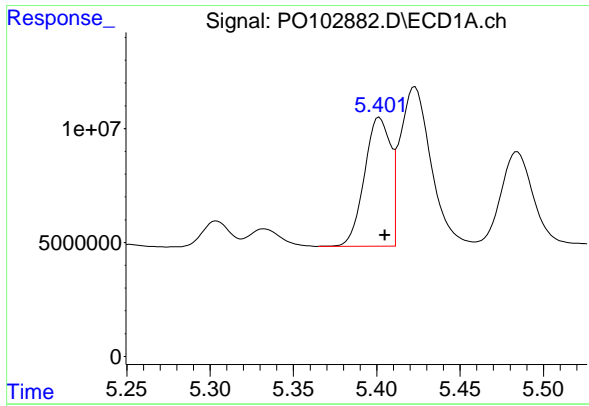
#20 AR-1242-5

R.T.: 6.306 min
 Delta R.T.: -0.004 min
 Response: 5870281
 Conc: 90.01 ng/ml



#20 AR-1242-5

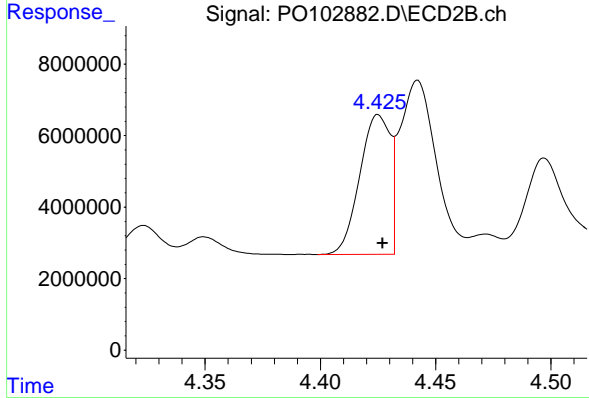
R.T.: 5.205 min
 Delta R.T.: -0.004 min
 Response: 24472443
 Conc: 410.38 ng/ml



#21 AR-1248-1

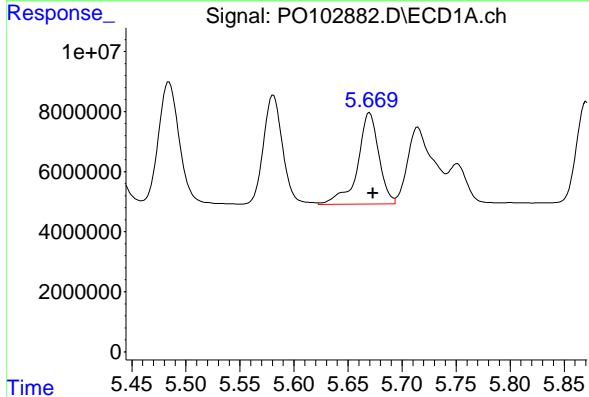
R.T.: 5.402 min
 Delta R.T.: -0.003 min
 Response: 61464515
 Conc: 820.12 ng/ml

Instrument :
 ECD_O
 ClientSampleId :
 PB160285BS



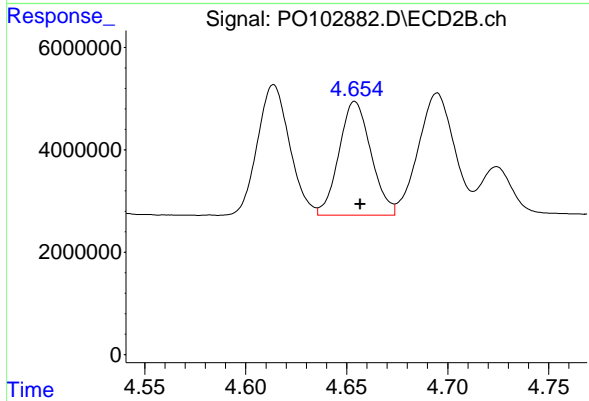
#21 AR-1248-1

R.T.: 4.425 min
 Delta R.T.: -0.002 min
 Response: 35948340
 Conc: 746.01 ng/ml



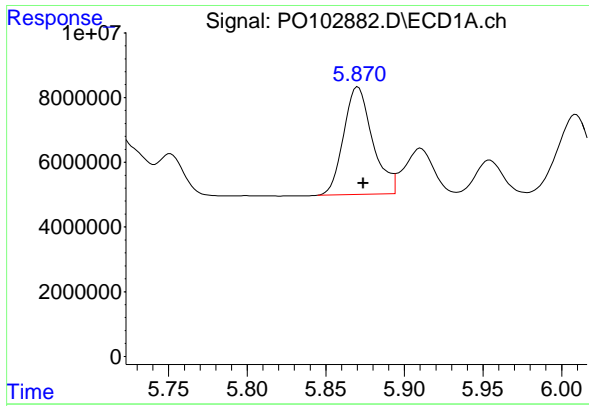
#22 AR-1248-2

R.T.: 5.670 min
 Delta R.T.: -0.003 min
 Response: 41808257
 Conc: 351.56 ng/ml



#22 AR-1248-2

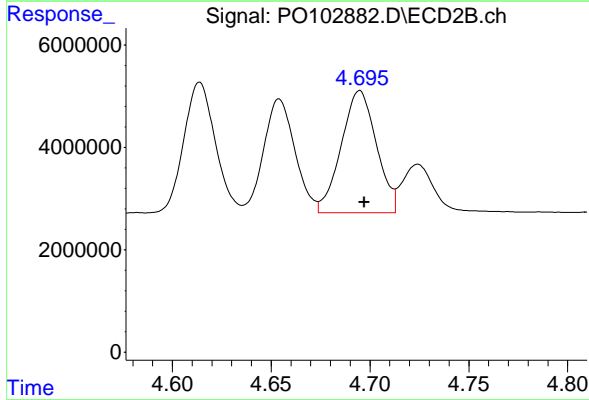
R.T.: 4.654 min
 Delta R.T.: -0.003 min
 Response: 24560817
 Conc: 325.10 ng/ml



#23 AR-1248-3

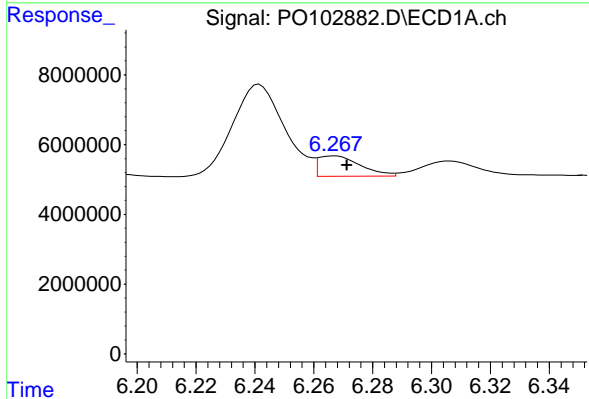
R.T.: 5.870 min
 Delta R.T.: -0.003 min
 Response: 42581584
 Conc: 347.38 ng/ml

Instrument :
 ECD_O
 ClientSampleId :
 PB160285BS



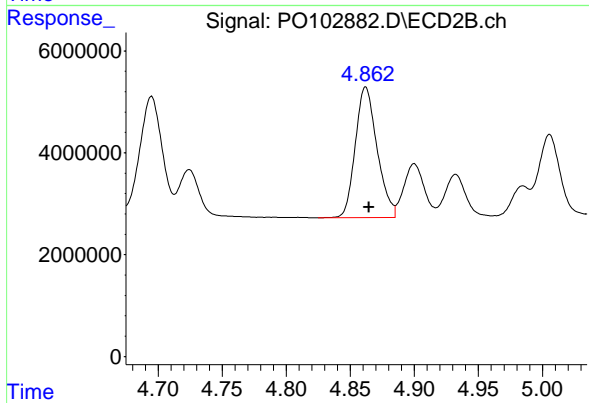
#23 AR-1248-3

R.T.: 4.695 min
 Delta R.T.: -0.002 min
 Response: 29627283
 Conc: 380.42 ng/ml



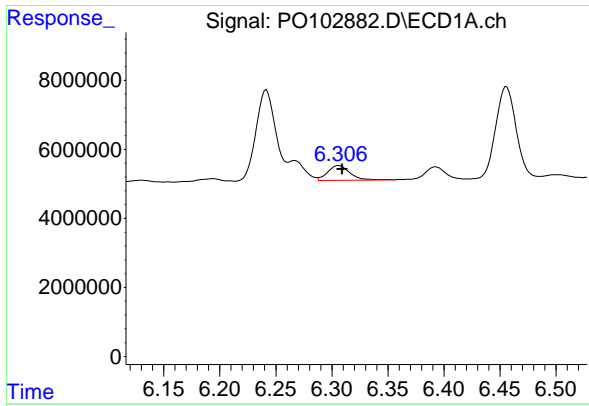
#24 AR-1248-4

R.T.: 6.267 min
 Delta R.T.: -0.004 min
 Response: 5849654
 Conc: 49.80 ng/ml



#24 AR-1248-4

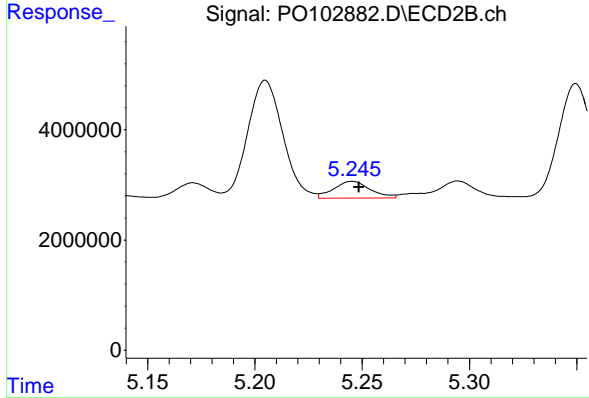
R.T.: 4.862 min
 Delta R.T.: -0.003 min
 Response: 30455297
 Conc: 338.07 ng/ml



#25 AR-1248-5

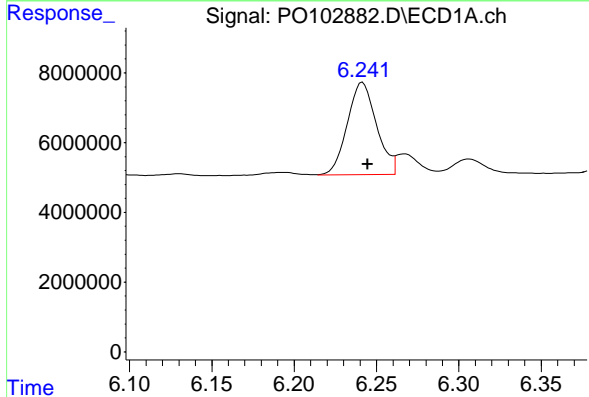
R.T.: 6.306 min
 Delta R.T.: -0.003 min
 Response: 5870281
 Conc: 51.55 ng/ml

Instrument :
 ECD_O
 ClientSampleId :
 PB160285BS



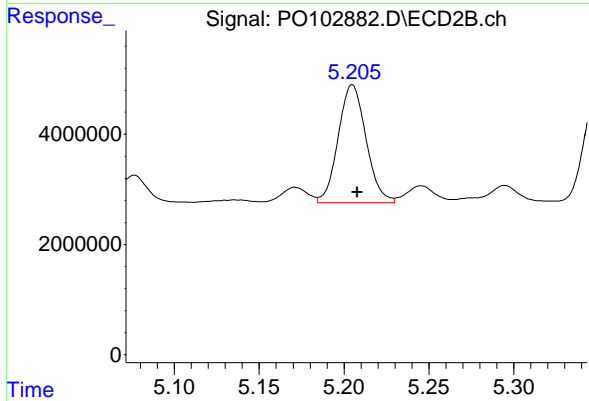
#25 AR-1248-5

R.T.: 5.246 min
 Delta R.T.: -0.003 min
 Response: 3608282
 Conc: 48.60 ng/ml



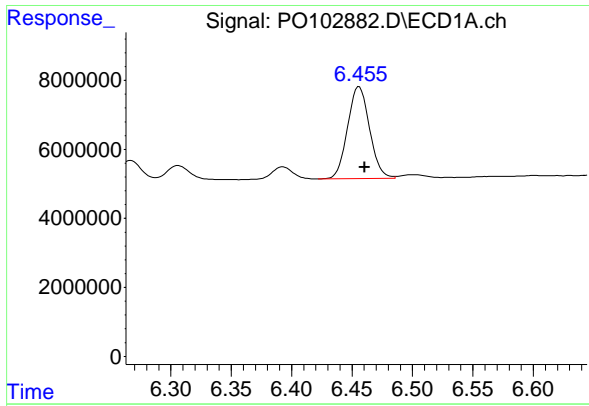
#26 AR-1254-1

R.T.: 6.242 min
 Delta R.T.: -0.003 min
 Response: 32707251
 Conc: 204.34 ng/ml



#26 AR-1254-1

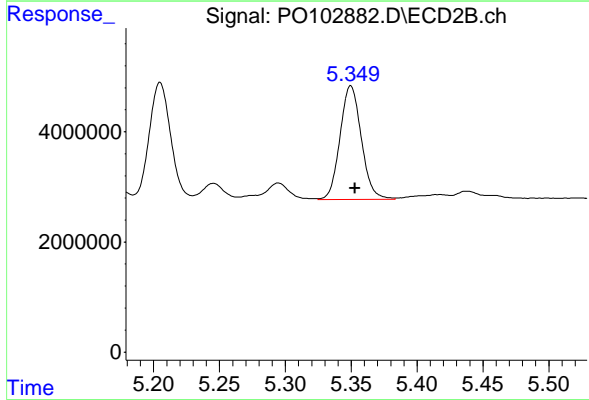
R.T.: 5.205 min
 Delta R.T.: -0.003 min
 Response: 24472443
 Conc: 168.04 ng/ml



#27 AR-1254-2

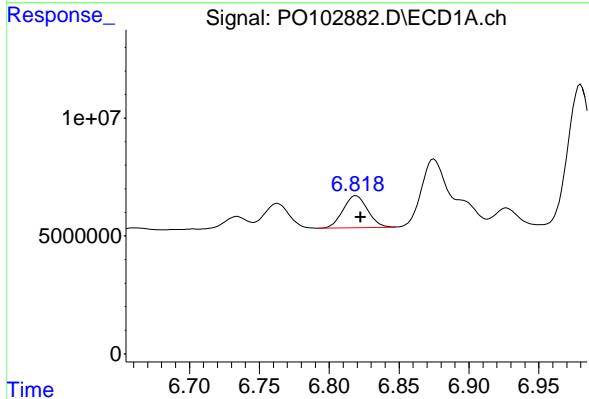
R.T.: 6.456 min
 Delta R.T.: -0.005 min
 Response: 33685991
 Conc: 152.37 ng/ml

Instrument :
 ECD_O
 ClientSampleId :
 PB160285BS



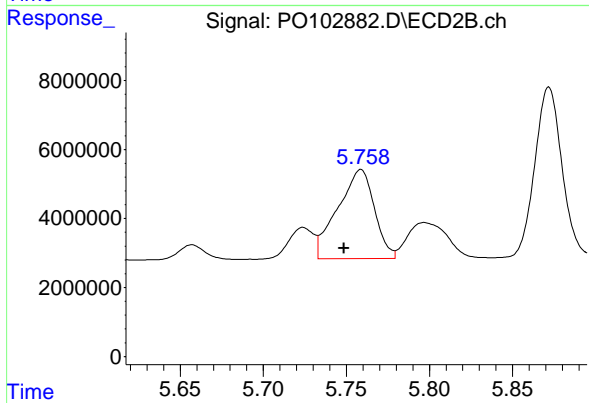
#27 AR-1254-2

R.T.: 5.350 min
 Delta R.T.: -0.003 min
 Response: 23304653
 Conc: 175.63 ng/ml



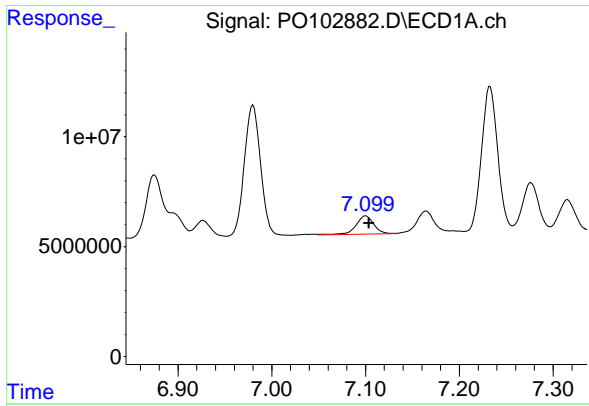
#28 AR-1254-3

R.T.: 6.819 min
 Delta R.T.: -0.003 min
 Response: 16610909
 Conc: 74.99 ng/ml



#28 AR-1254-3

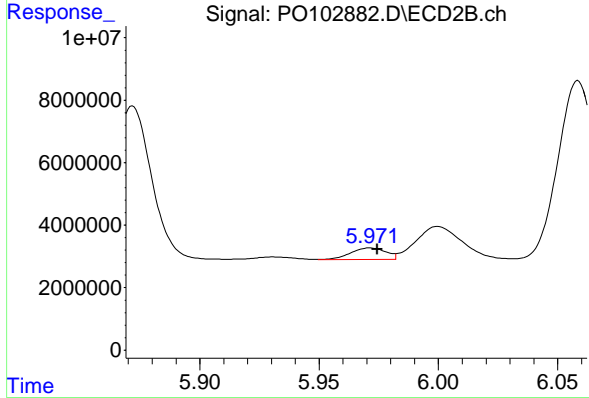
R.T.: 5.759 min
 Delta R.T.: 0.010 min
 Response: 39734536
 Conc: 208.20 ng/ml



#29 AR-1254-4

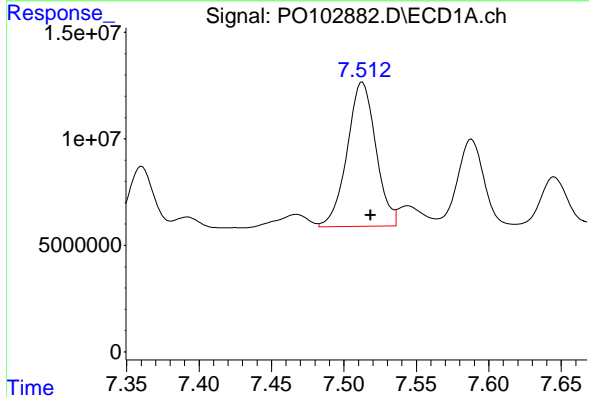
R.T.: 7.100 min
 Delta R.T.: -0.004 min
 Response: 11183197
 Conc: 80.28 ng/ml

Instrument :
 ECD_O
 ClientSampleId :
 PB160285BS



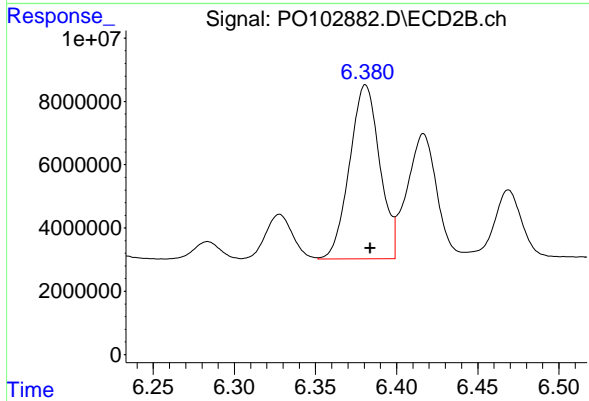
#29 AR-1254-4

R.T.: 5.971 min
 Delta R.T.: -0.003 min
 Response: 3787063
 Conc: 38.23 ng/ml



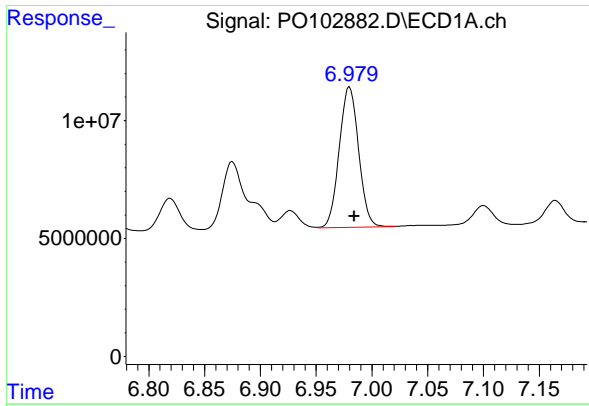
#30 AR-1254-5

R.T.: 7.513 min
 Delta R.T.: -0.005 min
 Response: 93474875
 Conc: 557.26 ng/ml



#30 AR-1254-5

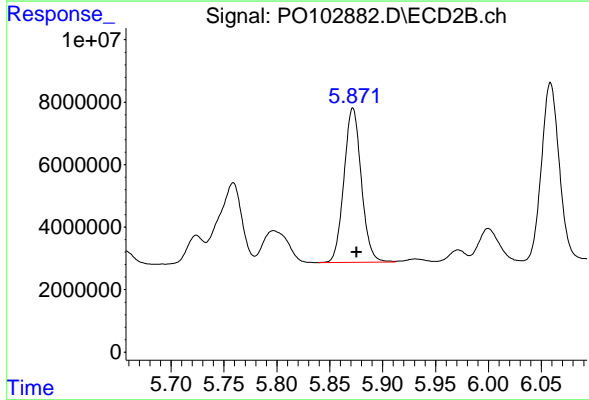
R.T.: 6.381 min
 Delta R.T.: -0.003 min
 Response: 71105119
 Conc: 423.66 ng/ml



#31 AR-1260-1

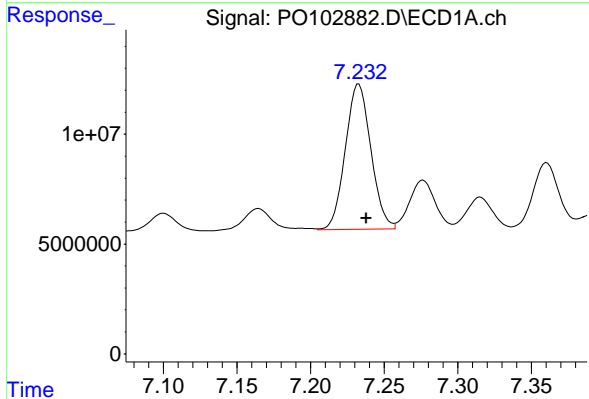
R.T.: 6.980 min
 Delta R.T.: -0.004 min
 Response: 72051598
 Conc: 331.80 ng/ml

Instrument :
 ECD_O
 ClientSampleId :
 PB160285BS



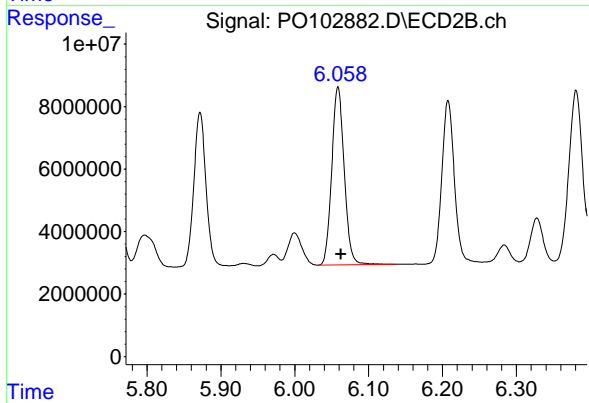
#31 AR-1260-1

R.T.: 5.872 min
 Delta R.T.: -0.004 min
 Response: 56527927
 Conc: 323.95 ng/ml



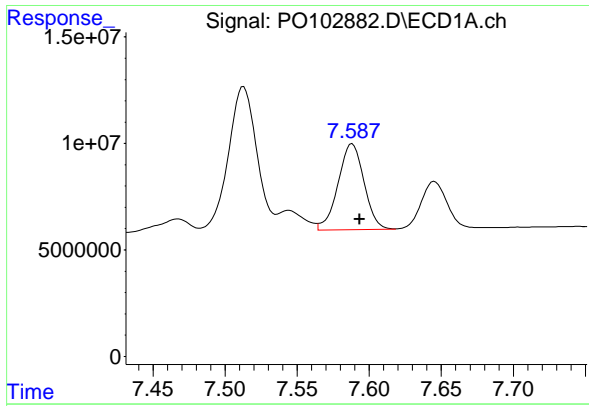
#32 AR-1260-2

R.T.: 7.233 min
 Delta R.T.: -0.005 min
 Response: 79982689
 Conc: 337.25 ng/ml



#32 AR-1260-2

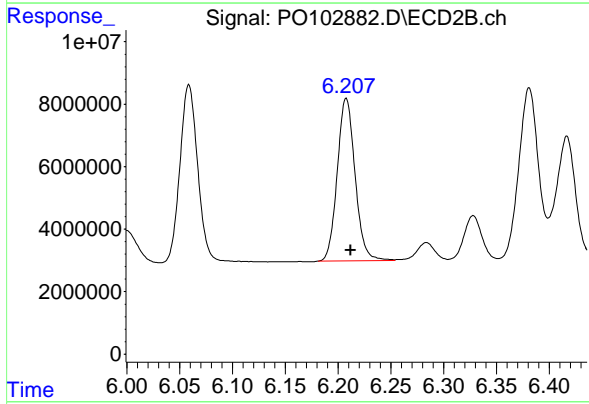
R.T.: 6.059 min
 Delta R.T.: -0.004 min
 Response: 67042484
 Conc: 352.75 ng/ml



#33 AR-1260-3

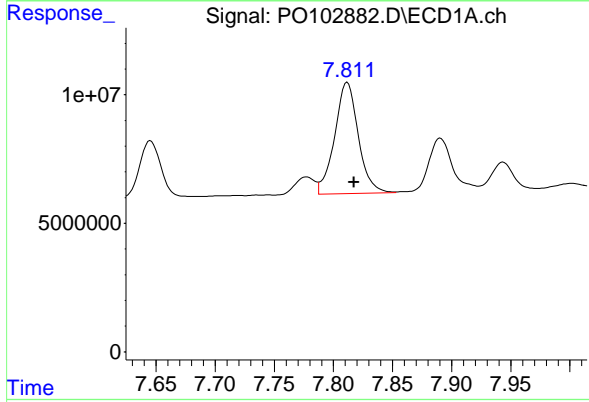
R.T.: 7.588 min
 Delta R.T.: -0.005 min
 Response: 50300602
 Conc: 335.39 ng/ml

Instrument :
 ECD_O
 ClientSampleId :
 PB160285BS



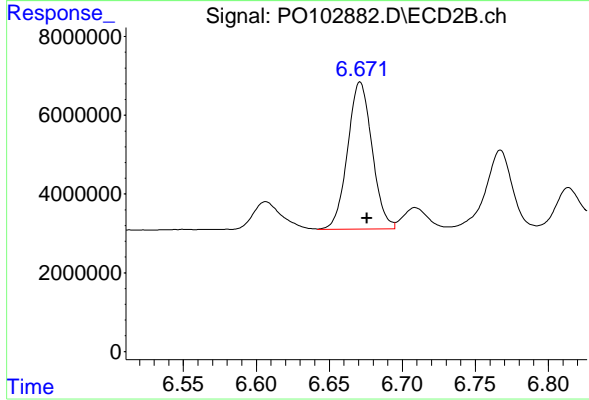
#33 AR-1260-3

R.T.: 6.208 min
 Delta R.T.: -0.004 min
 Response: 61285084
 Conc: 317.53 ng/ml



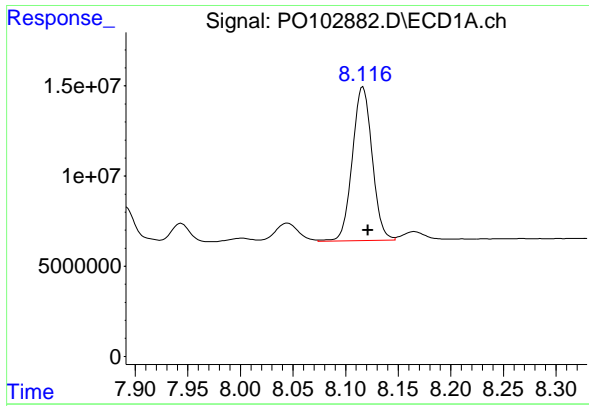
#34 AR-1260-4

R.T.: 7.812 min
 Delta R.T.: -0.006 min
 Response: 60339091
 Conc: 341.57 ng/ml



#34 AR-1260-4

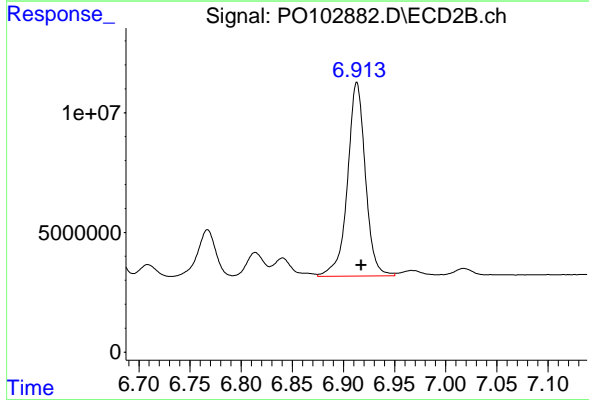
R.T.: 6.671 min
 Delta R.T.: -0.005 min
 Response: 43637576
 Conc: 332.98 ng/ml



#35 AR-1260-5

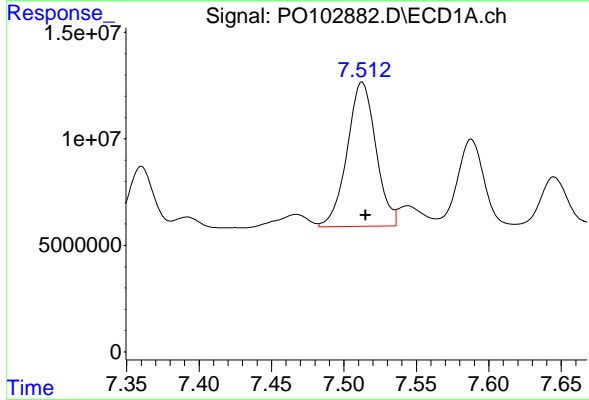
R.T.: 8.116 min
 Delta R.T.: -0.005 min
 Response: 111650889
 Conc: 359.28 ng/ml

Instrument :
 ECD_O
 ClientSampleId :
 PB160285BS



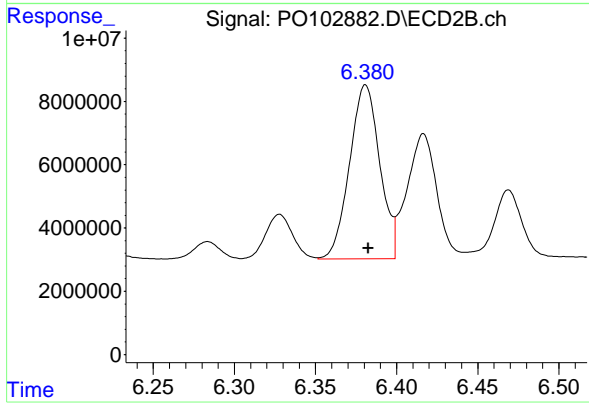
#35 AR-1260-5

R.T.: 6.913 min
 Delta R.T.: -0.004 min
 Response: 98580303
 Conc: 340.11 ng/ml



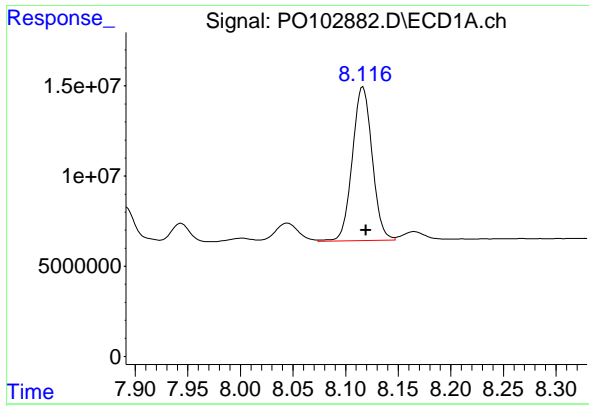
#36 AR-1262-1

R.T.: 7.513 min
 Delta R.T.: -0.002 min
 Response: 93474875
 Conc: 911.13 ng/ml



#36 AR-1262-1

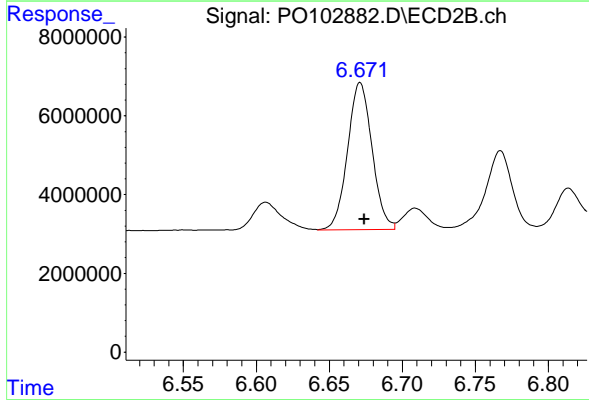
R.T.: 6.381 min
 Delta R.T.: -0.002 min
 Response: 71105119
 Conc: 1086.71 ng/ml



#37 AR-1262-2

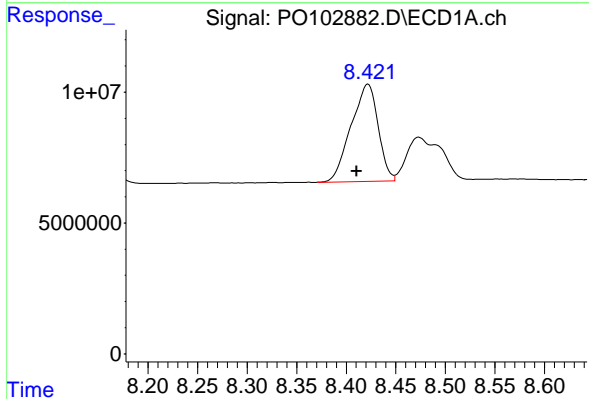
R.T.: 8.116 min
 Delta R.T.: -0.003 min
 Response: 111650889
 Conc: 444.79 ng/ml

Instrument :
 ECD_O
 ClientSampleId :
 PB160285BS



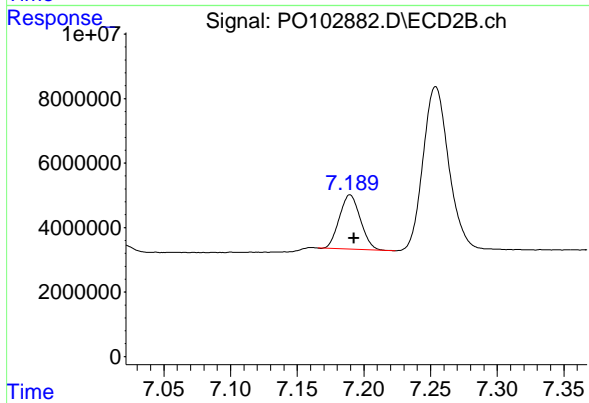
#37 AR-1262-2

R.T.: 6.671 min
 Delta R.T.: -0.003 min
 Response: 43637576
 Conc: 316.72 ng/ml



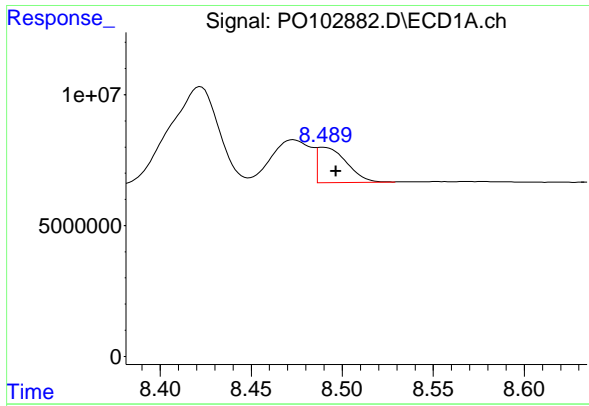
#38 AR-1262-3

R.T.: 8.422 min
 Delta R.T.: 0.011 min
 Response: 70602322
 Conc: 368.46 ng/ml



#38 AR-1262-3

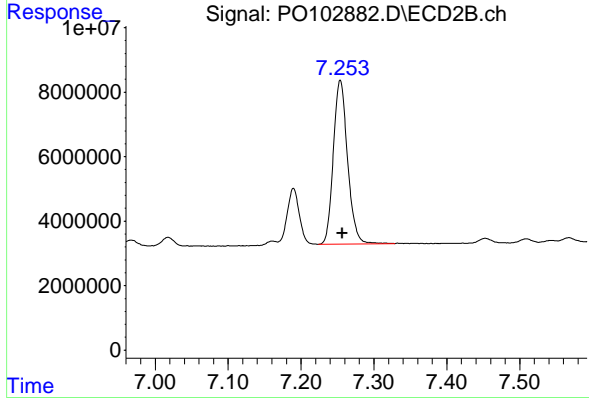
R.T.: 7.190 min
 Delta R.T.: -0.003 min
 Response: 18480761
 Conc: 193.20 ng/ml



#39 AR-1262-4

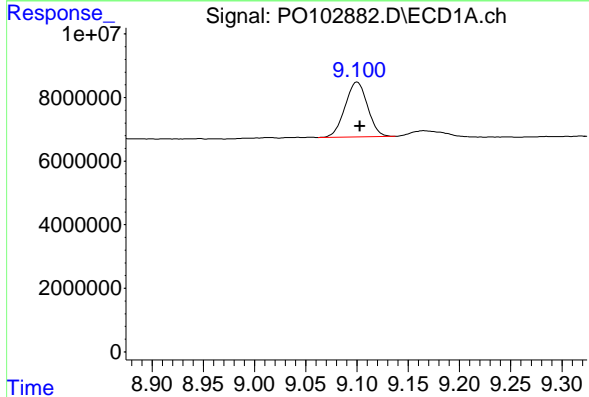
R.T.: 8.490 min
 Delta R.T.: -0.007 min
 Response: 15027929
 Conc: 100.45 ng/ml

Instrument :
 ECD_O
 ClientSampleId :
 PB160285BS



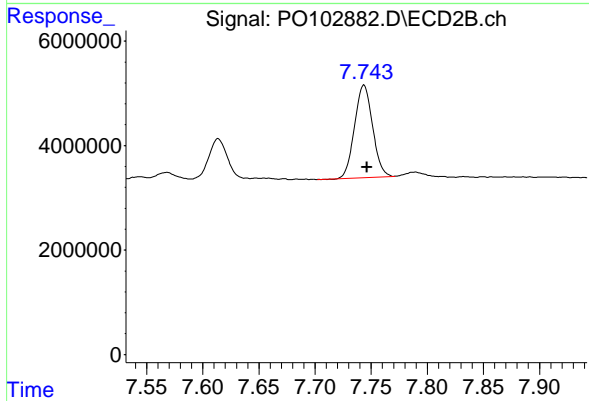
#39 AR-1262-4

R.T.: 7.254 min
 Delta R.T.: -0.003 min
 Response: 68837420
 Conc: 397.54 ng/ml



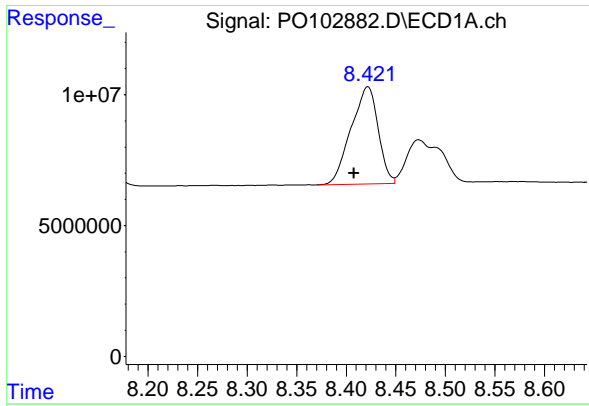
#40 AR-1262-5

R.T.: 9.100 min
 Delta R.T.: -0.003 min
 Response: 26424581
 Conc: 295.52 ng/ml



#40 AR-1262-5

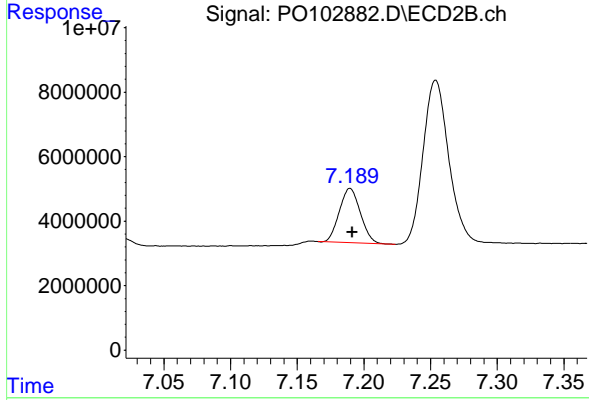
R.T.: 7.744 min
 Delta R.T.: -0.003 min
 Response: 19809877
 Conc: 290.15 ng/ml



#41 AR-1268-1

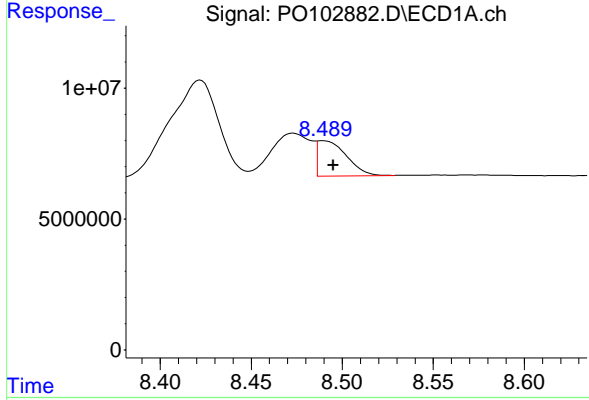
R.T.: 8.422 min
 Delta R.T.: 0.014 min
 Response: 70602322
 Conc: 210.80 ng/ml

Instrument :
 ECD_O
 ClientSampleId :
 PB160285BS



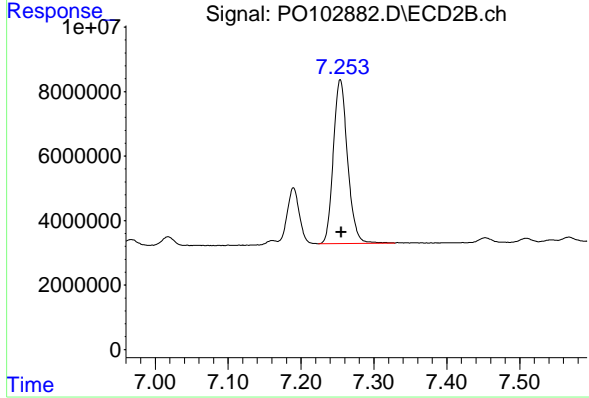
#41 AR-1268-1

R.T.: 7.190 min
 Delta R.T.: -0.002 min
 Response: 18480761
 Conc: 63.51 ng/ml



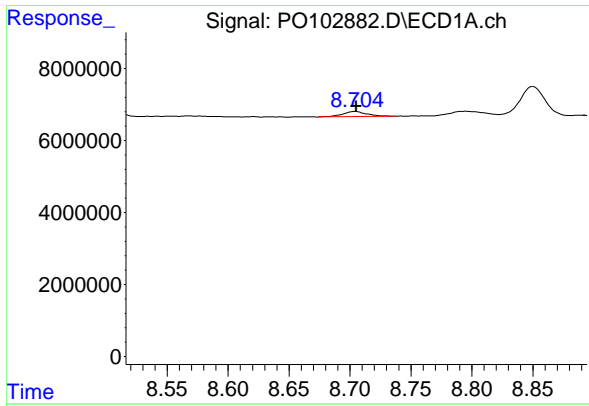
#42 AR-1268-2

R.T.: 8.490 min
 Delta R.T.: -0.006 min
 Response: 15027929
 Conc: 49.00 ng/ml



#42 AR-1268-2

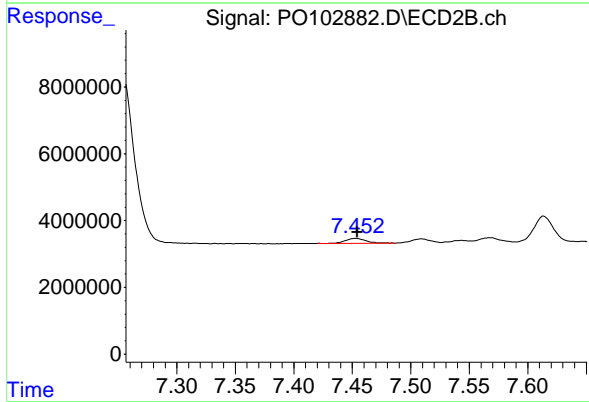
R.T.: 7.254 min
 Delta R.T.: -0.002 min
 Response: 68837420
 Conc: 254.80 ng/ml



#43 AR-1268-3

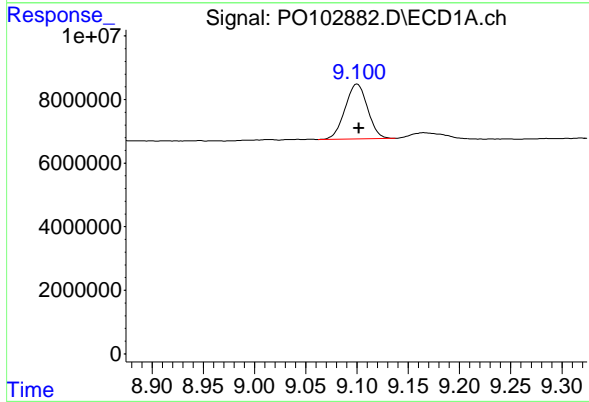
R.T.: 8.704 min
 Delta R.T.: -0.001 min
 Response: 2029296
 Conc: 7.40 ng/ml

Instrument :
 ECD_O
 ClientSampleId :
 PB160285BS



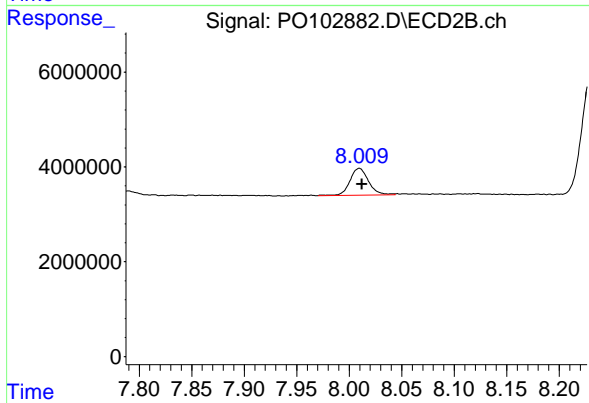
#43 AR-1268-3

R.T.: 7.453 min
 Delta R.T.: -0.002 min
 Response: 1829883
 Conc: 7.76 ng/ml



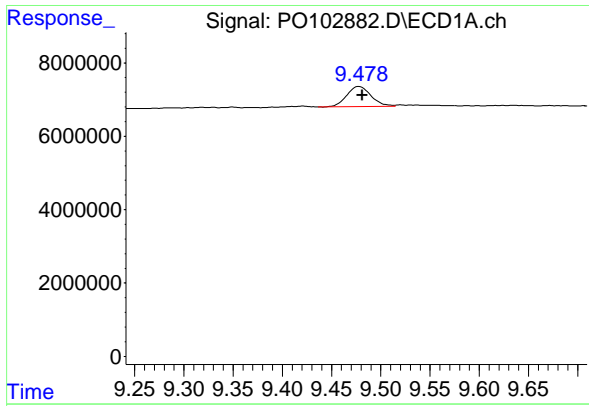
#44 AR-1268-4

R.T.: 9.100 min
 Delta R.T.: -0.002 min
 Response: 26424581
 Conc: 257.55 ng/ml



#44 AR-1268-4

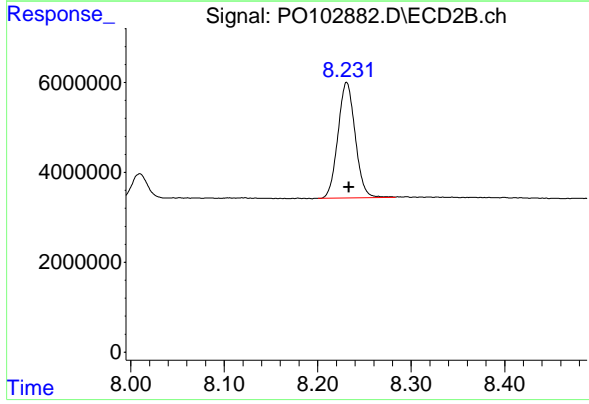
R.T.: 8.010 min
 Delta R.T.: -0.002 min
 Response: 6982461
 Conc: 11.37 ng/ml



#45 AR-1268-5

R.T.: 9.478 min
Delta R.T.: -0.003 min
Response: 9349263
Conc: 10.82 ng/ml

Instrument :
ECD_O
ClientSampleId :
PB160285BS



#45 AR-1268-5

R.T.: 8.231 min
Delta R.T.: -0.002 min
Response: 33054841
Conc: 114.11 ng/ml