

Data Path : Z:\pestpcbsrv\HPCHEM1\ECD_O\Data\P0041823\
 Data File : P0094362.D
 Signal(s) : Signal #1: ECD1A.ch Signal #2: ECD2B.ch
 Acq On : 18 Apr 2023 22:16
 Operator : YP/AJ
 Sample : 02388-01
 Misc :
 ALS Vial : 27 Sample Multiplier: 1

Instrument :
 ECD_O
 ClientSampleId :
 CC-1

Integration File signal 1: autoint1.e
 Integration File signal 2: autoint2.e
 Quant Time: Apr 19 06:32:13 2023
 Quant Method : Z:\pestpcbsrv\HPCHEM1\ECD_O\methods\P0040323.M
 Quant Title : GC EXTRACTABLES
 QLast Update : Tue Apr 04 06:20:55 2023
 Response via : Initial Calibration
 Integrator: ChemStation

Volume Inj. : 2 µl
 Signal #1 Phase : ZB-MR1 Signal #2 Phase: ZB-MR2
 Signal #1 Info : 30Mx0.32mmx 0.50µ Signal #2 Info : 30M x 0.32mm x 0.25µm

Compound	RT#1	RT#2	Resp#1	Resp#2	ng/ml	ng/ml

System Monitoring Compounds						
1) SA Tetrachlo...	4.416	3.617	65520724	25288240	17.527	19.859
2) SA Decachlor...	10.257	8.636	39220396	16767039	17.533	16.771

Target Compounds

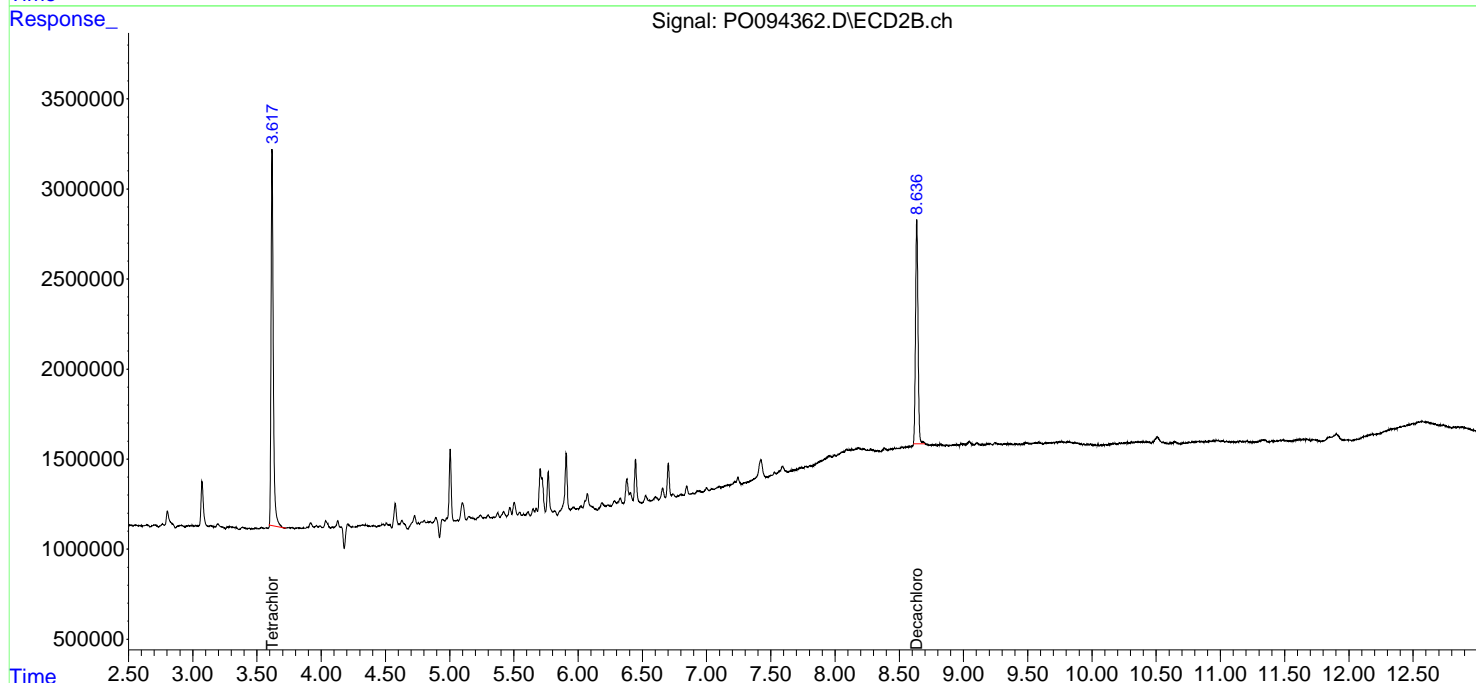
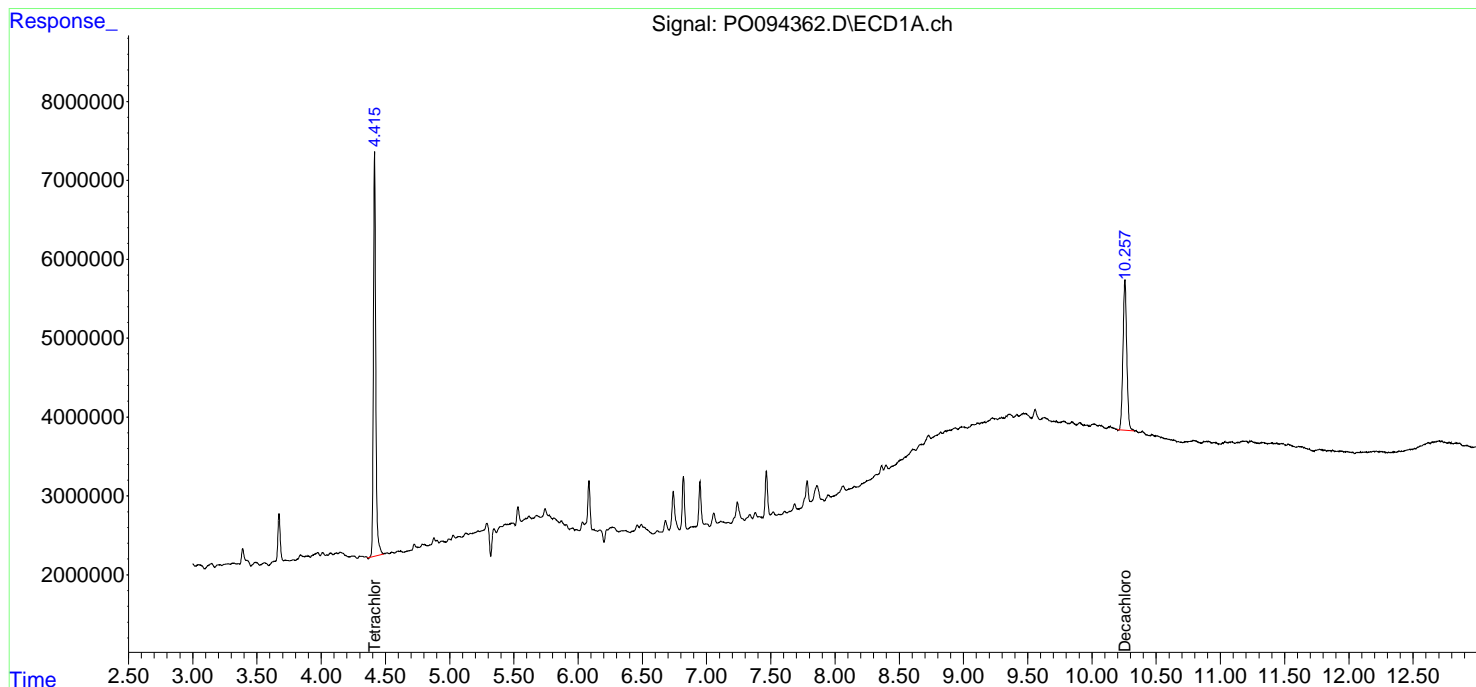
(f)=RT Delta > 1/2 Window (#)=Amounts differ by > 25% (m)=manual int.

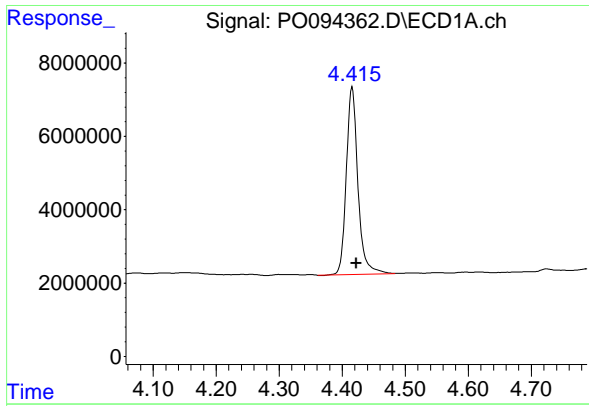
Data Path : Z:\pestpcbsrv\HPCHEM1\ECD_O\Data\PO041823\
Data File : PO094362.D
Signal(s) : Signal #1: ECD1A.ch Signal #2: ECD2B.ch
Acq On : 18 Apr 2023 22:16
Operator : YP/AJ
Sample : 02388-01
Misc :
ALS Vial : 27 Sample Multiplier: 1

Instrument :
ECD_O
ClientSampleId :
CC-1

Integration File signal 1: autoint1.e
Integration File signal 2: autoint2.e
Quant Time: Apr 19 06:32:13 2023
Quant Method : Z:\pestpcbsrv\HPCHEM1\ECD_O\methods\PO040323.M
Quant Title : GC EXTRACTABLES
QLast Update : Tue Apr 04 06:20:55 2023
Response via : Initial Calibration
Integrator: ChemStation

Volume Inj. : 2 µl
Signal #1 Phase : ZB-MR1 Signal #2 Phase: ZB-MR2
Signal #1 Info : 30Mx0.32mmx 0.50µ Signal #2 Info : 30M x 0.32mm x 0.25µm

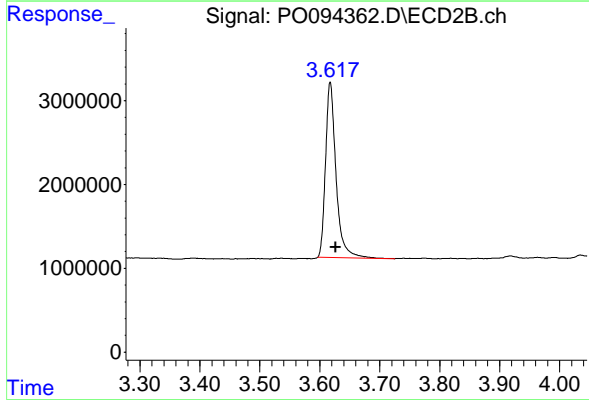




#1 Tetrachloro-m-xylene

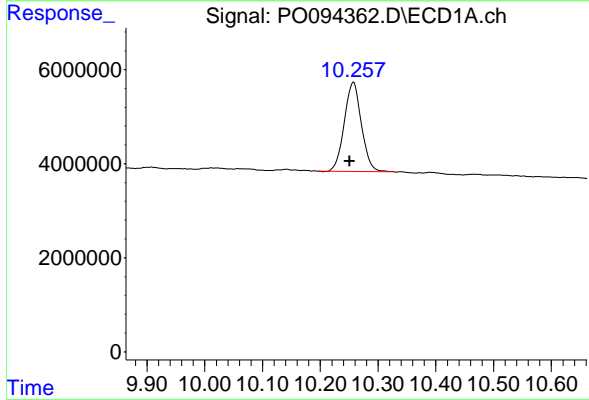
R.T.: 4.416 min
 Delta R.T.: -0.006 min
 Response: 65520724
 Conc: 17.53 ng/ml

Instrument :
 ECD_O
 ClientSampleId :
 CC-1



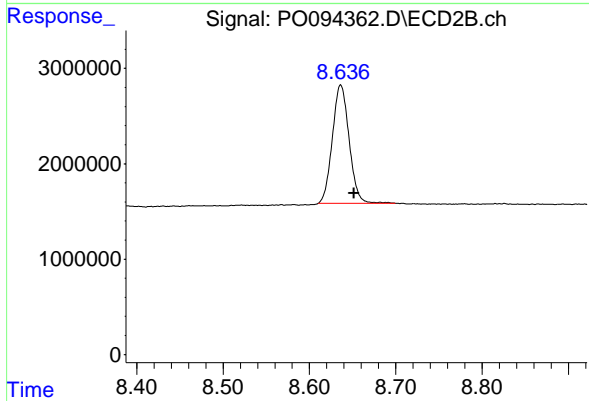
#1 Tetrachloro-m-xylene

R.T.: 3.617 min
 Delta R.T.: -0.009 min
 Response: 25288240
 Conc: 19.86 ng/ml



#2 Decachlorobiphenyl

R.T.: 10.257 min
 Delta R.T.: 0.007 min
 Response: 39220396
 Conc: 17.53 ng/ml



#2 Decachlorobiphenyl

R.T.: 8.636 min
 Delta R.T.: -0.015 min
 Response: 16767039
 Conc: 16.77 ng/ml