

Data Path : Z:\pestpcbsrv\HPCHEM1\ECD_0\Data\P0041825\
 Data File : PO110552.D
 Signal(s) : Signal #1: ECD1A.ch Signal #2: ECD2B.ch
 Acq On : 18 Apr 2025 22:14
 Operator : YP/AJ
 Sample : I.BLK
 Misc :
 ALS Vial : 2 Sample Multiplier: 1

Instrument :
 ECD_0
 ClientSampleId :

Integration File signal 1: autoint1.e
 Integration File signal 2: autoint2.e
 Quant Time: Apr 19 07:33:42 2025
 Quant Method : Z:\pestpcbsrv\HPCHEM1\ECD_0\methods\P0041025.M
 Quant Title : GC EXTRACTABLES
 QLast Update : Fri Apr 11 02:12:41 2025
 Response via : Initial Calibration
 Integrator: ChemStation

Volume Inj. : 2 µl
 Signal #1 Phase : ZB-MR1 Signal #2 Phase: ZB-MR2
 Signal #1 Info : 30Mx0.32mmx 0.50µ Signal #2 Info : 30M x 0.32mm x 0.25µm

Compound	RT#1	RT#2	Resp#1	Resp#2	ng/ml	ng/ml

System Monitoring Compounds						
1) SA Tetrachlo...	3.686	3.683	174.9E6	96238710	19.993	19.287
2) SA Decachlor...	8.731	8.683	153.0E6	40115688	19.384	20.839
Target Compounds						
3) L1 AR-1016-1	4.786	4.771	6069860	1272010	18.498	7.248 #
4) L1 AR-1016-2	4.786	4.771	6069860	1272010	13.342	5.058 #
5) L1 AR-1016-3	4.877	4.964	4069509	768583	12.618	5.663 #
6) L1 AR-1016-4	4.978	5.017	13161699	1797514	52.823	15.717 #
7) L1 AR-1016-5	5.241	5.220	16260300	11680179	60.445	78.352 #
8) L2 AR-1221-1	3.905	3.899	1328345	475801	11.254	7.126 #
9) L2 AR-1221-2	3.988	3.982	4233737	2110535	47.924	42.130
10) L2 AR-1221-3	4.061	4.057	854718	158482	3.248	1.062 #
11) L3 AR-1232-1	4.061	4.057	854718	158482	4.173	1.378 #
12) L3 AR-1232-2	4.558	4.771	770201	1272010	7.218	11.473 #
13) L3 AR-1232-3	4.786	4.964	6069860	768583	30.383	13.436 #
14) L3 AR-1232-4	4.978	5.047	13161699	1159955	128.660	21.499 #
15) L3 AR-1232-5	5.043	5.220	7471681	11680179	108.439	204.428 #
16) L4 AR-1242-1	4.786	4.771	6069860	1272010	21.871	8.508 #
17) L4 AR-1242-2	4.786	4.799	6069860	430430	15.734	2.017 #
18) L4 AR-1242-3	4.877	4.964	4069509	768583	14.628	6.650 #
19) L4 AR-1242-4	4.978	5.047	13161699	1159955	62.269	9.658 #
20) L4 AR-1242-5	5.633	5.550	4519065	3130302	19.961	21.574
21) L5 AR-1248-1	4.786	4.771	6069860	1272010	28.519	11.048 #
22) L5 AR-1248-2	5.043	5.017	7471681	1797514	25.249	11.036 #
23) L5 AR-1248-3	5.241	5.047	16260300	1159955	43.951	6.596 #
24) L5 AR-1248-4	5.570	5.220	4789722	11680179	9.210	57.346 #
25) L5 AR-1248-5	5.633	5.599	4519065	7341887	12.233	37.194 #
26) L6 AR-1254-1	5.570	5.550	4789722	3130302	8.584	10.382
27) L6 AR-1254-2	5.741	5.685	22954193	17408530	47.260	65.771 #
28) L6 AR-1254-3	6.141	6.117	17897271	3414782	22.851	8.465 #
29) L6 AR-1254-4	6.364	6.338	4947404	1612053	10.146	7.018 #
30) L6 AR-1254-5	6.787	6.755	4043910	156555	5.770	0.471 #
31) L7 AR-1260-1	6.273	6.242	9157991	1842413	19.384	7.491 #
32) L7 AR-1260-2	6.483	6.409	1723993	4798977	2.940	16.449 #
33) L7 AR-1260-3	6.821	6.564	7376995	678045	14.967	2.503 #
34) L7 AR-1260-4	7.120	7.089	6288071	2739301	14.816	13.653
35) L7 AR-1260-5	7.327	7.293	5218399	862003	5.001	1.879 #
36) L8 AR-1262-1	6.821	6.788	7376995	1381694	10.517	4.195 #
37) L8 AR-1262-2	7.327	7.293	5218399	862003	4.321	1.695 #
38) L8 AR-1262-3	7.619	7.578	1616548	282301	3.175	1.458 #
39) L8 AR-1262-4	7.670	7.633	1709695	1121872	1.908	3.233 #
40) L8 AR-1262-5	8.181	8.161	189571	30377	0.470	0.244 #
41) L9 AR-1268-1	7.619	7.578	1616548	282301	1.151	0.515 #

Data Path : Z:\pestpcbsrv\HPCHEM1\ECD_0\Data\P0041825\
 Data File : P0110552.D
 Signal(s) : Signal #1: ECD1A.ch Signal #2: ECD2B.ch
 Acq On : 18 Apr 2025 22:14
 Operator : YP/AJ
 Sample : I.BLK
 Misc :
 ALS Vial : 2 Sample Multiplier: 1

Instrument :
 ECD_0
 ClientSampleId :

Integration File signal 1: autoint1.e
 Integration File signal 2: autoint2.e
 Quant Time: Apr 19 07:33:42 2025
 Quant Method : Z:\pestpcbsrv\HPCHEM1\ECD_0\methods\P0041025.M
 Quant Title : GC EXTRACTABLES
 QLast Update : Fri Apr 11 02:12:41 2025
 Response via : Initial Calibration
 Integrator: ChemStation

Volume Inj. : 2 µl
 Signal #1 Phase : ZB-MR1 Signal #2 Phase: ZB-MR2
 Signal #1 Info : 30Mx0.32mmx 0.50µ Signal #2 Info : 30M x 0.32mm x 0.25µm

	Compound	RT#1	RT#2	Resp#1	Resp#2	ng/ml	ng/ml
42)	L9 AR-1268-2	7.670	7.633	1709695	1121872	1.336	2.255 #
43)	L9 AR-1268-3	7.874	7.831	1533861	1189719	1.471	3.202 #
44)	L9 AR-1268-4	8.181	8.161	189571	30377	0.427	0.215 #
45)	L9 AR-1268-5	8.472	8.426	1547711	183004	0.481	0.232 #

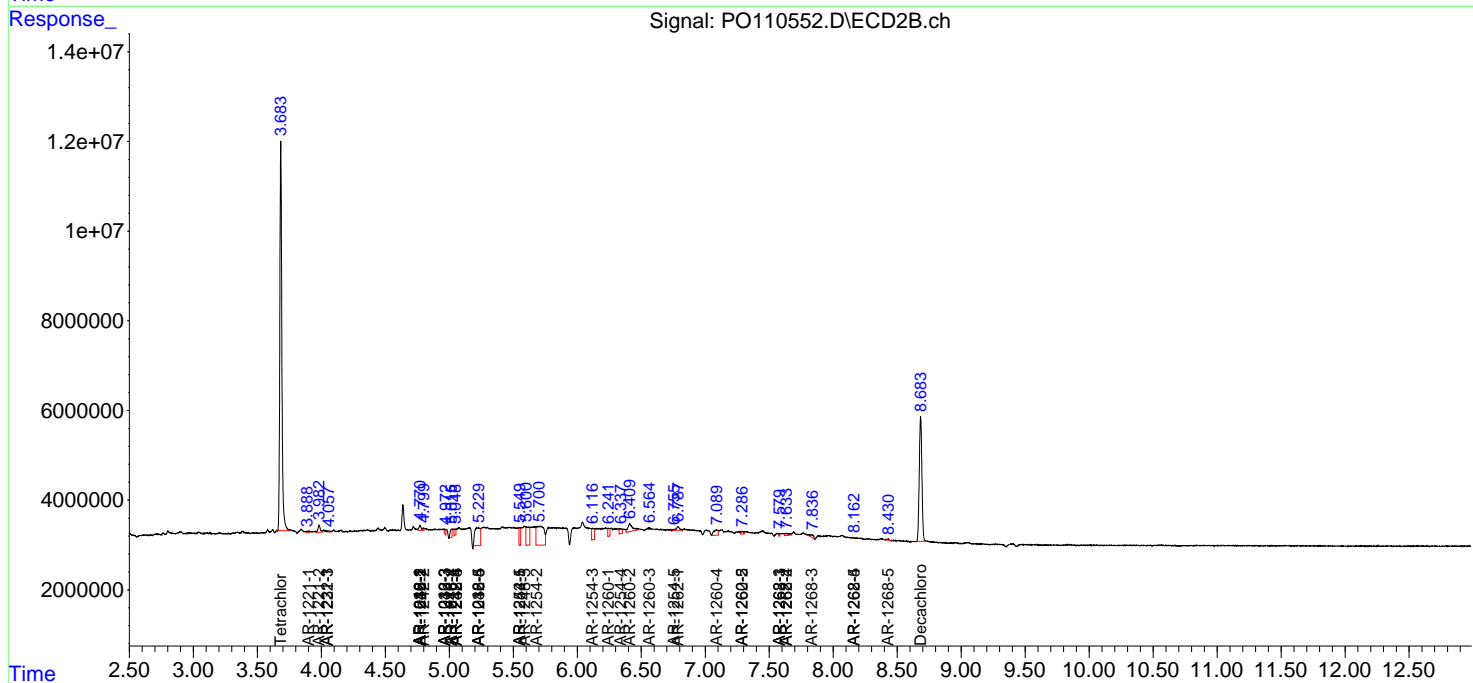
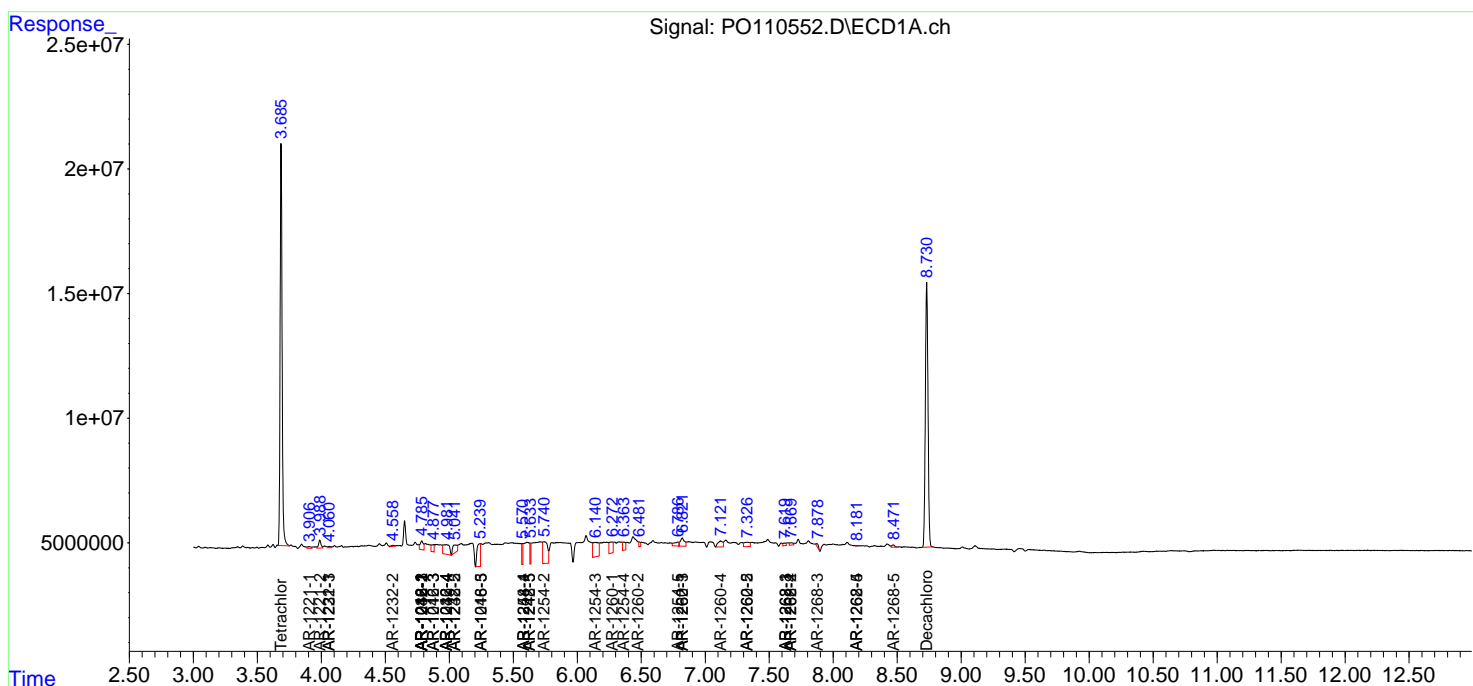
(f)=RT Delta > 1/2 Window (#)=Amounts differ by > 25% (m)=manual int.

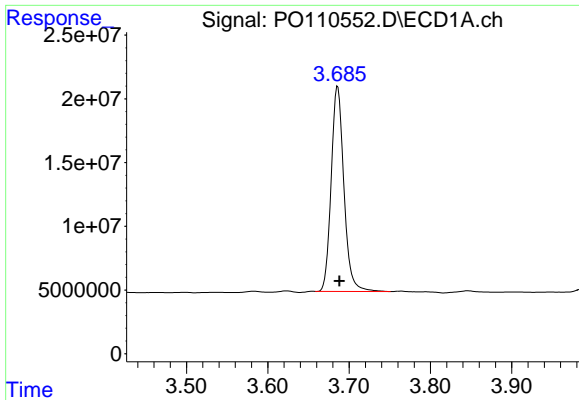
Data Path : Z:\pestpcbsrv\HPCHEM1\ECD_O\Data\PO041825\
 Data File : PO110552.D
 Signal(s) : Signal #1: ECD1A.ch Signal #2: ECD2B.ch
 Acq On : 18 Apr 2025 22:14
 Operator : YP/AJ
 Sample : I.BLK
 Misc :
 ALS Vial : 2 Sample Multiplier: 1

Instrument :
 ECD_O
 ClientSampleId :

Integration File signal 1: autoint1.e
 Integration File signal 2: autoint2.e
 Quant Time: Apr 19 07:33:42 2025
 Quant Method : Z:\pestpcbsrv\HPCHEM1\ECD_O\methods\PO041025.M
 Quant Title : GC EXTRACTABLES
 QLast Update : Fri Apr 11 02:12:41 2025
 Response via : Initial Calibration
 Integrator: ChemStation

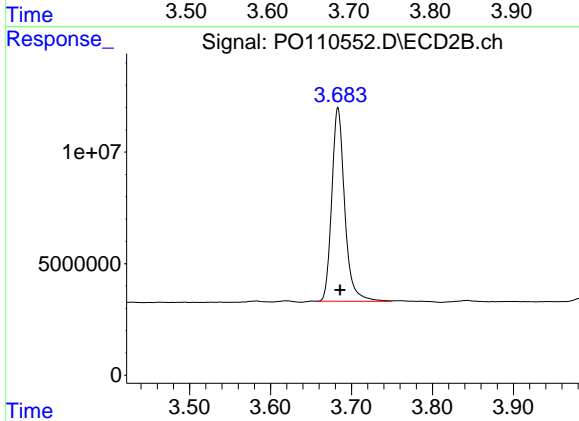
Volume Inj. : 2 µl
 Signal #1 Phase : ZB-MR1 Signal #2 Phase: ZB-MR2
 Signal #1 Info : 30Mx0.32mmx 0.50µ Signal #2 Info : 30M x 0.32mm x 0.25µm



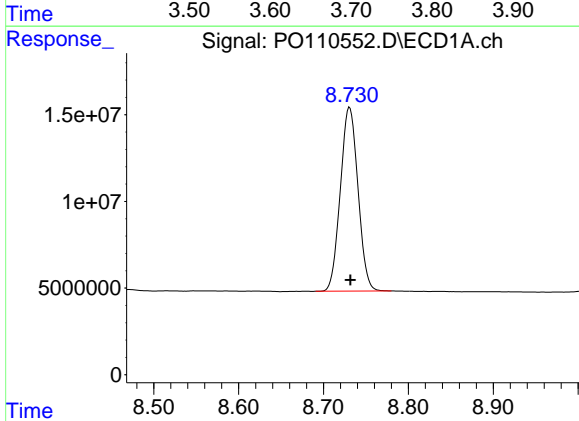


#1 Tetrachloro-m-xylene
 R.T.: 3.686 min
 Delta R.T.: -0.002 min
 Response: 174916275
 Conc: 19.99 ng/ml

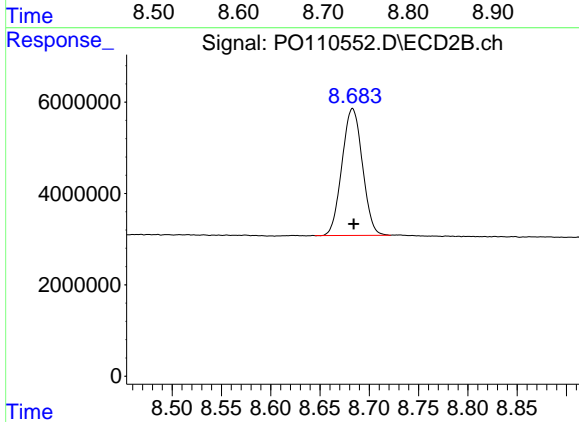
Instrument :
 ECD_O
 ClientSampleId :



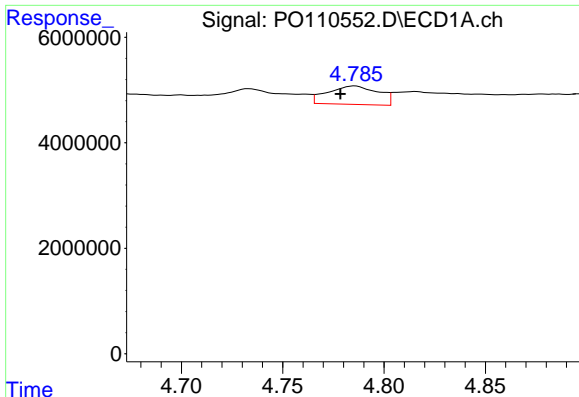
#1 Tetrachloro-m-xylene
 R.T.: 3.683 min
 Delta R.T.: -0.002 min
 Response: 96238710
 Conc: 19.29 ng/ml



#2 Decachlorobiphenyl
 R.T.: 8.731 min
 Delta R.T.: 0.000 min
 Response: 153036496
 Conc: 19.38 ng/ml



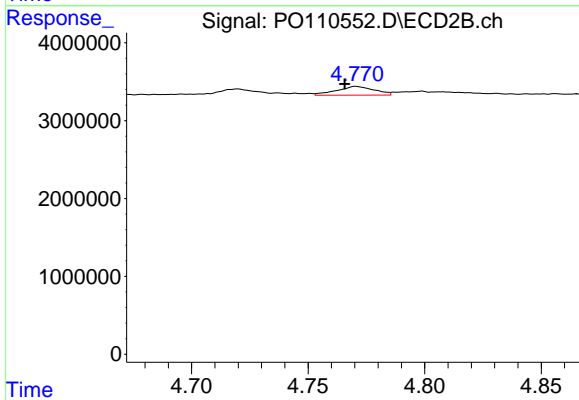
#2 Decachlorobiphenyl
 R.T.: 8.683 min
 Delta R.T.: -0.001 min
 Response: 40115688
 Conc: 20.84 ng/ml



#3 AR-1016-1

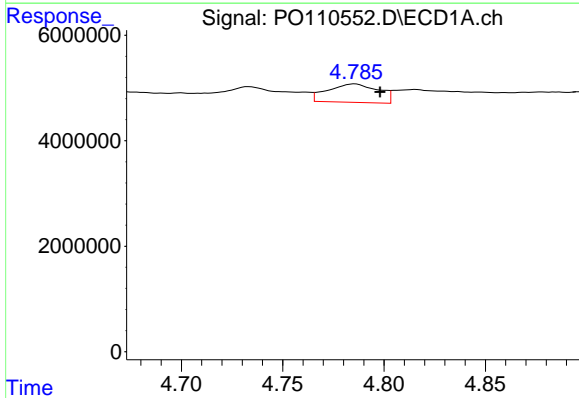
R.T.: 4.786 min
 Delta R.T.: 0.007 min
 Response: 6069860
 Conc: 18.50 ng/ml

Instrument :
 ECD_O
 ClientSampleId :



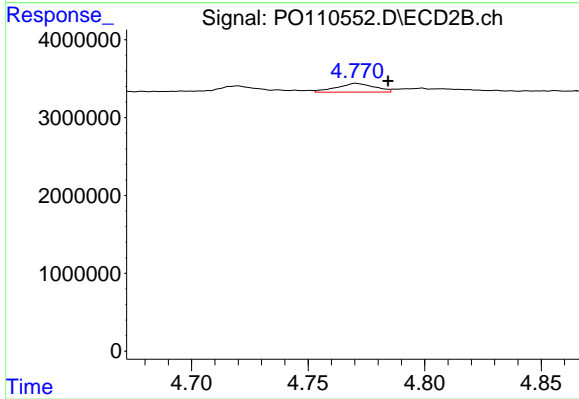
#3 AR-1016-1

R.T.: 4.771 min
 Delta R.T.: 0.005 min
 Response: 1272010
 Conc: 7.25 ng/ml



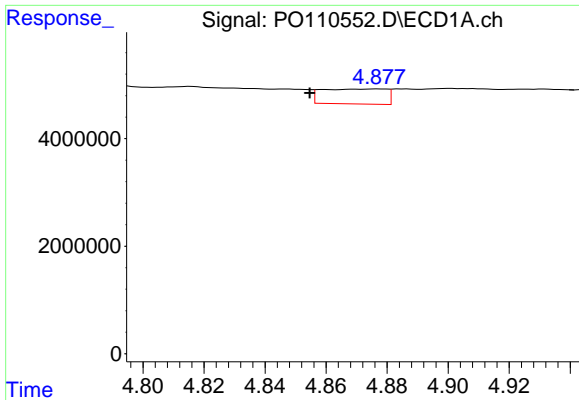
#4 AR-1016-2

R.T.: 4.786 min
 Delta R.T.: -0.013 min
 Response: 6069860
 Conc: 13.34 ng/ml



#4 AR-1016-2

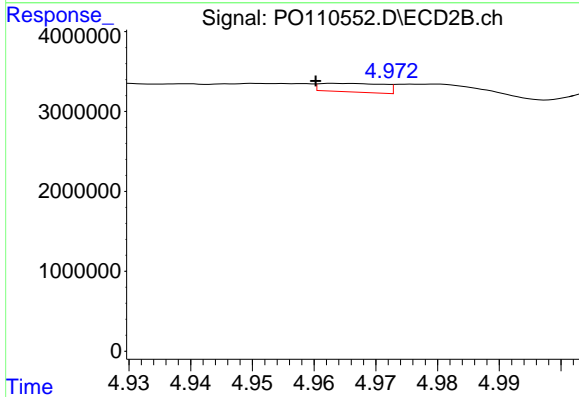
R.T.: 4.771 min
 Delta R.T.: -0.014 min
 Response: 1272010
 Conc: 5.06 ng/ml



#5 AR-1016-3

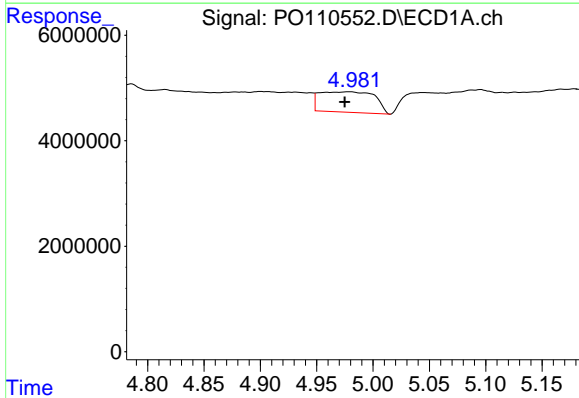
R.T.: 4.877 min
 Delta R.T.: 0.023 min
 Response: 4069509
 Conc: 12.62 ng/ml

Instrument :
 ECD_O
 ClientSampleId :



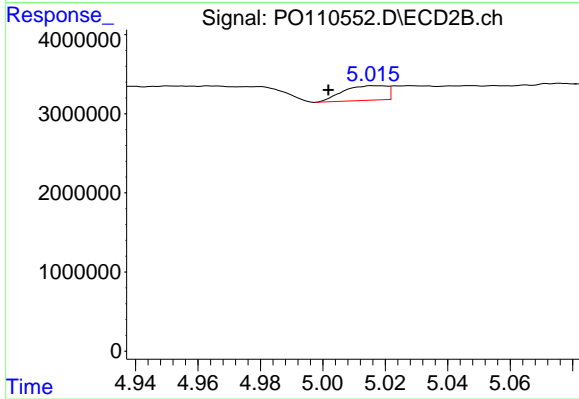
#5 AR-1016-3

R.T.: 4.964 min
 Delta R.T.: 0.004 min
 Response: 768583
 Conc: 5.66 ng/ml



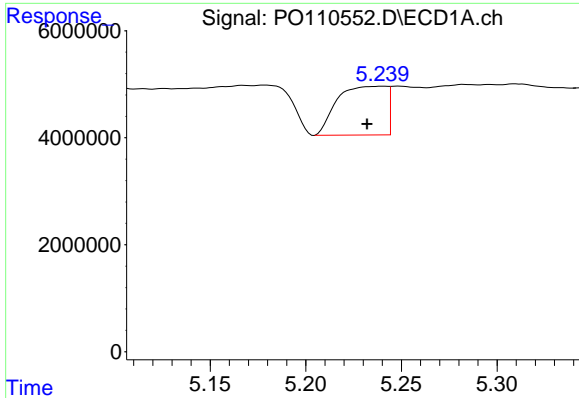
#6 AR-1016-4

R.T.: 4.978 min
 Delta R.T.: 0.003 min
 Response: 13161699
 Conc: 52.82 ng/ml



#6 AR-1016-4

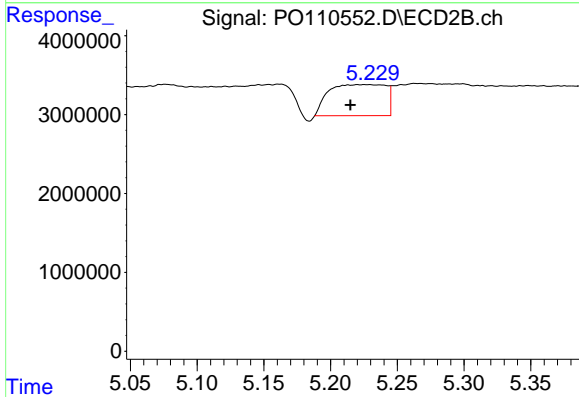
R.T.: 5.017 min
 Delta R.T.: 0.015 min
 Response: 1797514
 Conc: 15.72 ng/ml



#7 AR-1016-5

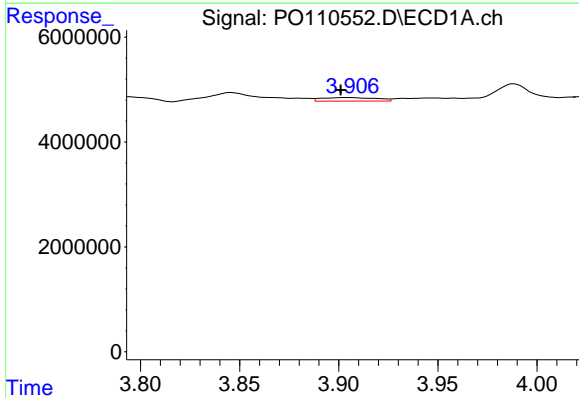
R.T.: 5.241 min
 Delta R.T.: 0.009 min
 Response: 16260300
 Conc: 60.44 ng/ml

Instrument :
 ECD_O
 ClientSampleId :



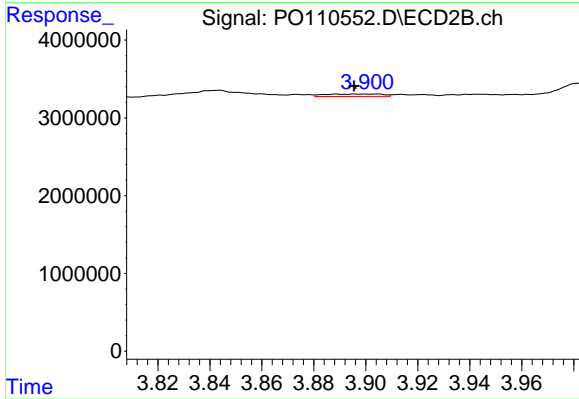
#7 AR-1016-5

R.T.: 5.220 min
 Delta R.T.: 0.006 min
 Response: 11680179
 Conc: 78.35 ng/ml



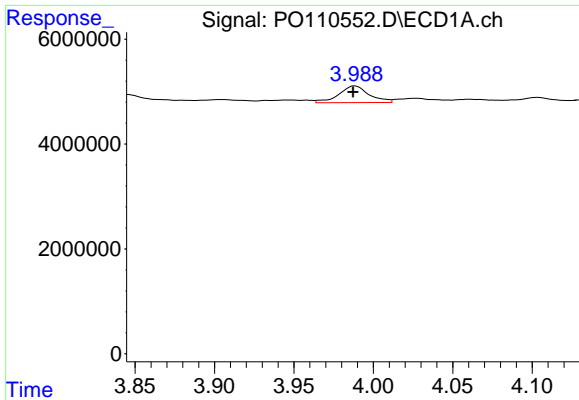
#8 AR-1221-1

R.T.: 3.905 min
 Delta R.T.: 0.004 min
 Response: 1328345
 Conc: 11.25 ng/ml



#8 AR-1221-1

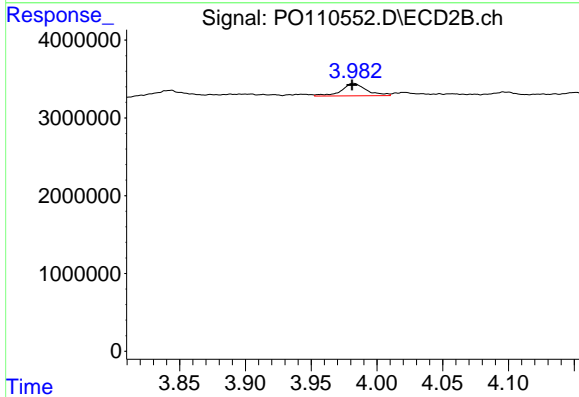
R.T.: 3.899 min
 Delta R.T.: 0.004 min
 Response: 475801
 Conc: 7.13 ng/ml



#9 AR-1221-2

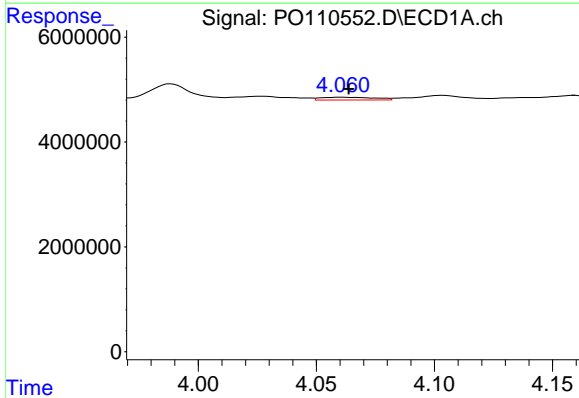
R.T.: 3.988 min
 Delta R.T.: 0.001 min
 Response: 4233737
 Conc: 47.92 ng/ml

Instrument :
 ECD_O
 ClientSampleId :



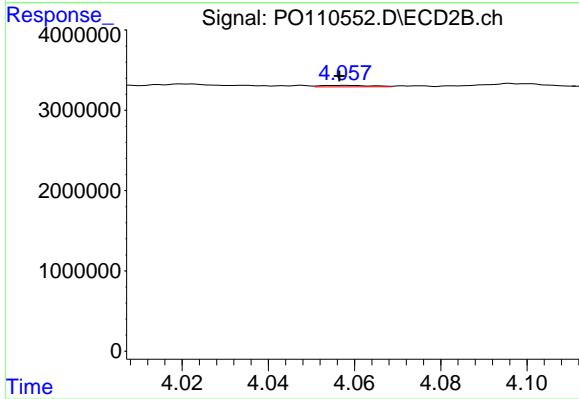
#9 AR-1221-2

R.T.: 3.982 min
 Delta R.T.: 0.001 min
 Response: 2110535
 Conc: 42.13 ng/ml



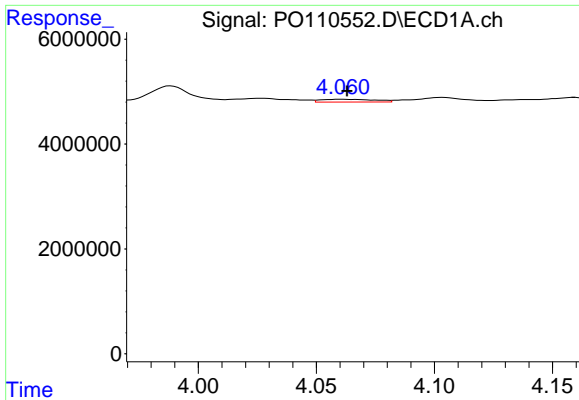
#10 AR-1221-3

R.T.: 4.061 min
 Delta R.T.: -0.003 min
 Response: 854718
 Conc: 3.25 ng/ml



#10 AR-1221-3

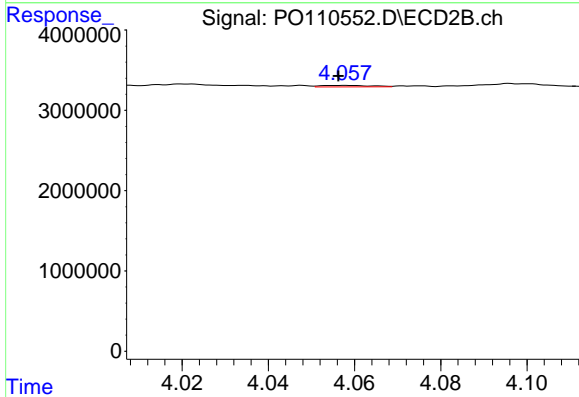
R.T.: 4.057 min
 Delta R.T.: 0.000 min
 Response: 158482
 Conc: 1.06 ng/ml



#11 AR-1232-1

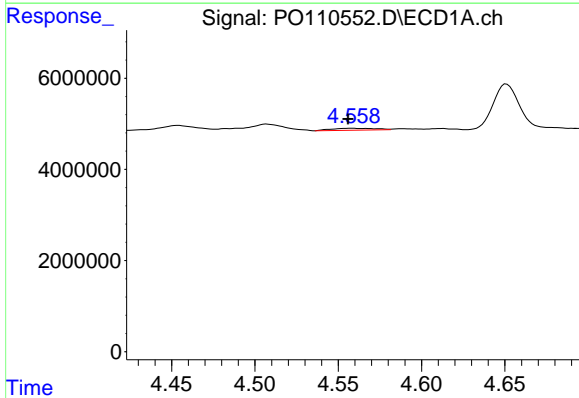
R.T.: 4.061 min
 Delta R.T.: -0.002 min
 Response: 854718
 Conc: 4.17 ng/ml

Instrument :
 ECD_O
 ClientSampleId :



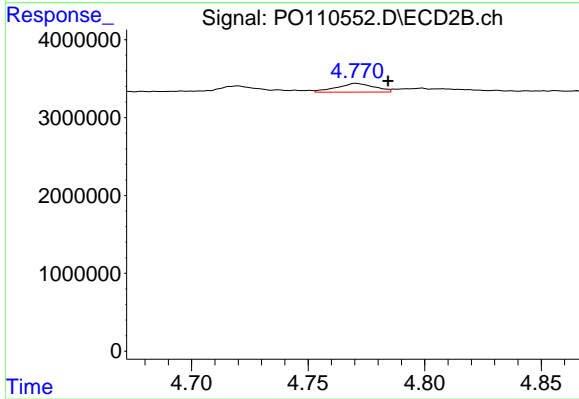
#11 AR-1232-1

R.T.: 4.057 min
 Delta R.T.: 0.000 min
 Response: 158482
 Conc: 1.38 ng/ml



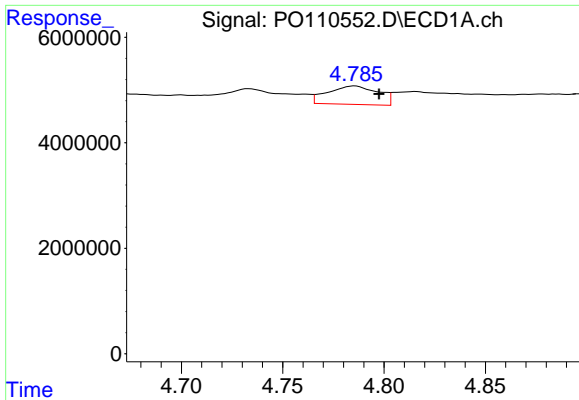
#12 AR-1232-2

R.T.: 4.558 min
 Delta R.T.: 0.002 min
 Response: 770201
 Conc: 7.22 ng/ml



#12 AR-1232-2

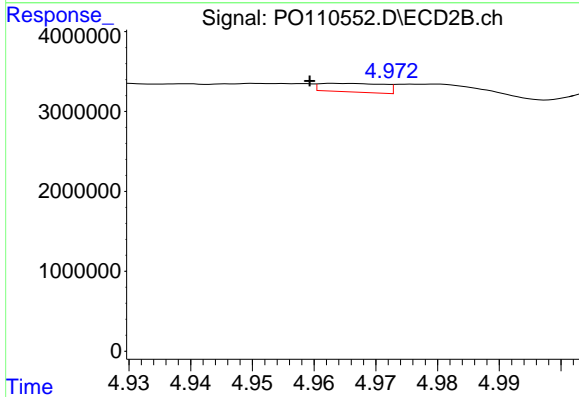
R.T.: 4.771 min
 Delta R.T.: -0.013 min
 Response: 1272010
 Conc: 11.47 ng/ml



#13 AR-1232-3

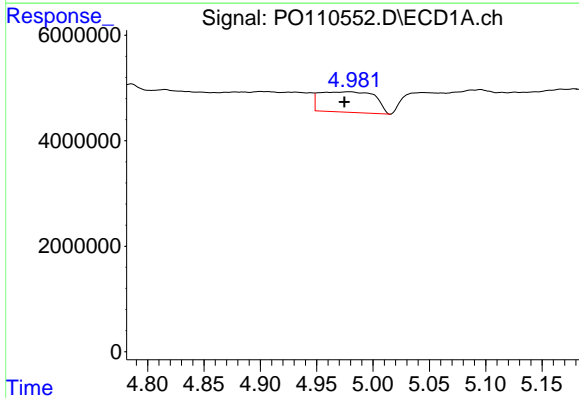
R.T.: 4.786 min
 Delta R.T.: -0.012 min
 Response: 6069860
 Conc: 30.38 ng/ml

Instrument :
 ECD_O
 ClientSampleId :



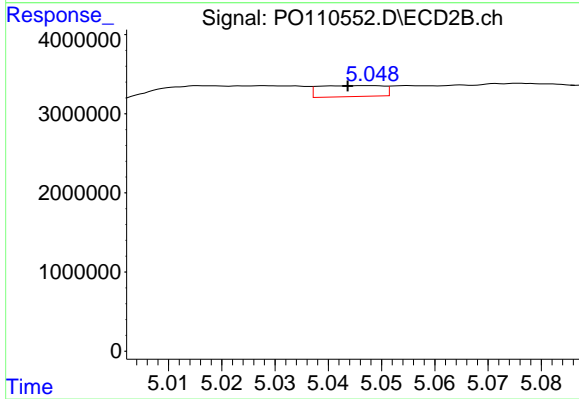
#13 AR-1232-3

R.T.: 4.964 min
 Delta R.T.: 0.005 min
 Response: 768583
 Conc: 13.44 ng/ml



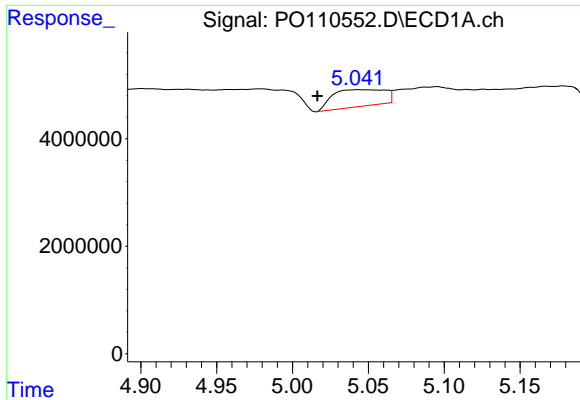
#14 AR-1232-4

R.T.: 4.978 min
 Delta R.T.: 0.004 min
 Response: 13161699
 Conc: 128.66 ng/ml



#14 AR-1232-4

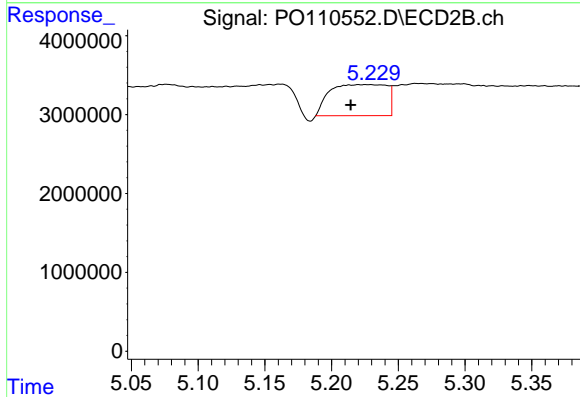
R.T.: 5.047 min
 Delta R.T.: 0.004 min
 Response: 1159955
 Conc: 21.50 ng/ml



#15 AR-1232-5

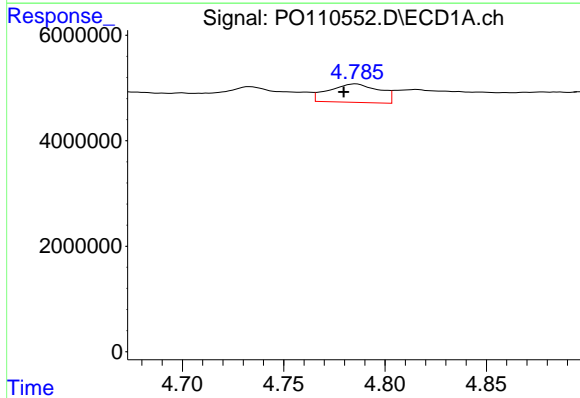
R.T.: 5.043 min
 Delta R.T.: 0.027 min
 Response: 7471681
 Conc: 108.44 ng/ml

Instrument :
 ECD_O
 ClientSampleId :



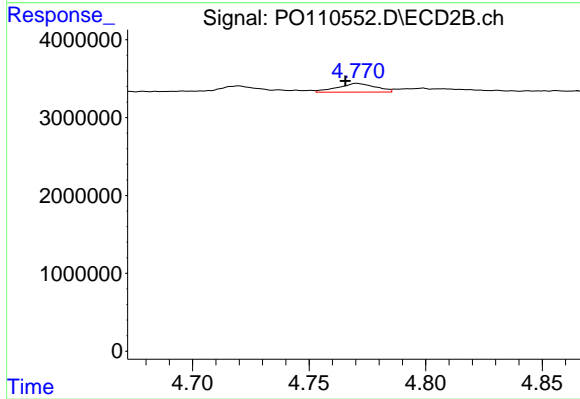
#15 AR-1232-5

R.T.: 5.220 min
 Delta R.T.: 0.006 min
 Response: 11680179
 Conc: 204.43 ng/ml



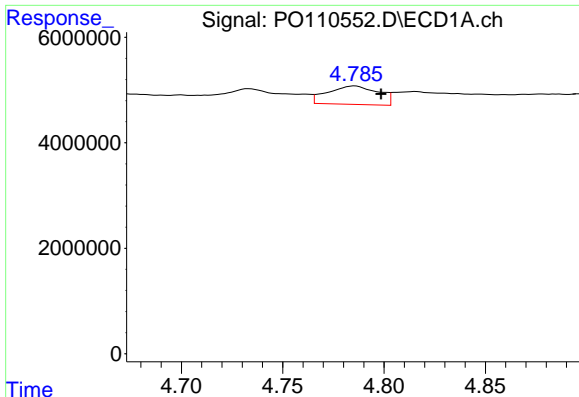
#16 AR-1242-1

R.T.: 4.786 min
 Delta R.T.: 0.006 min
 Response: 6069860
 Conc: 21.87 ng/ml



#16 AR-1242-1

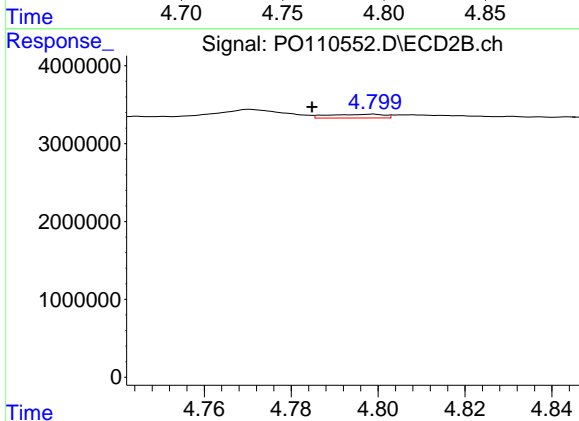
R.T.: 4.771 min
 Delta R.T.: 0.005 min
 Response: 1272010
 Conc: 8.51 ng/ml



#17 AR-1242-2

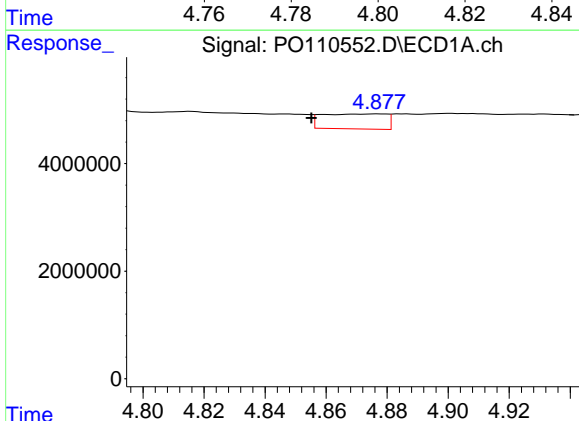
R.T.: 4.786 min
 Delta R.T.: -0.013 min
 Response: 6069860
 Conc: 15.73 ng/ml

Instrument :
 ECD_O
 ClientSampleId :



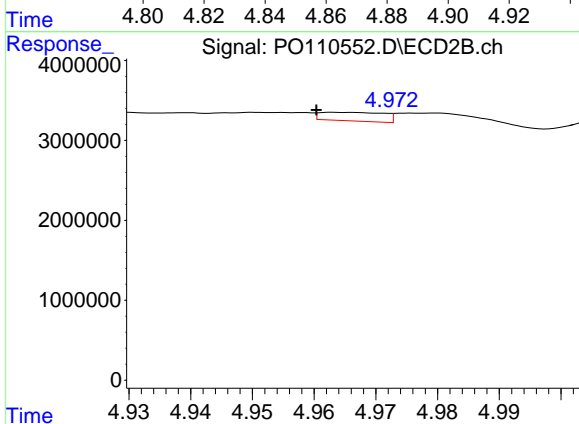
#17 AR-1242-2

R.T.: 4.799 min
 Delta R.T.: 0.014 min
 Response: 430430
 Conc: 2.02 ng/ml



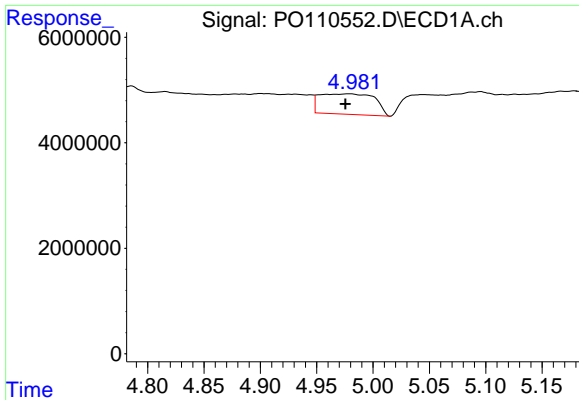
#18 AR-1242-3

R.T.: 4.877 min
 Delta R.T.: 0.022 min
 Response: 4069509
 Conc: 14.63 ng/ml



#18 AR-1242-3

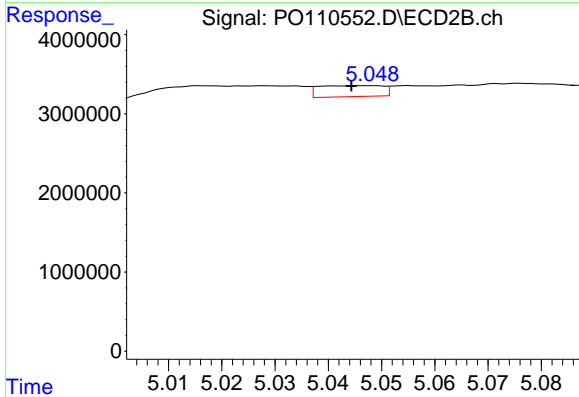
R.T.: 4.964 min
 Delta R.T.: 0.004 min
 Response: 768583
 Conc: 6.65 ng/ml



#19 AR-1242-4

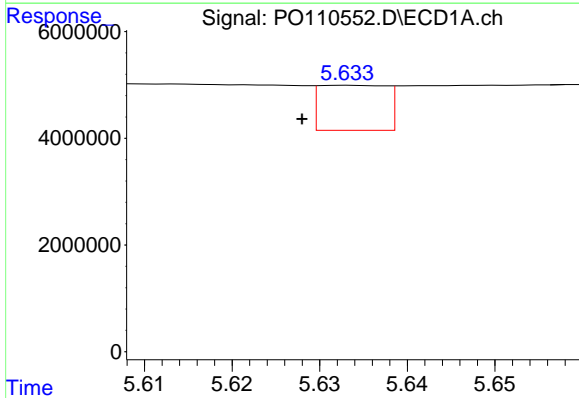
R.T.: 4.978 min
 Delta R.T.: 0.003 min
 Response: 13161699
 Conc: 62.27 ng/ml

Instrument :
 ECD_O
 ClientSampleId :



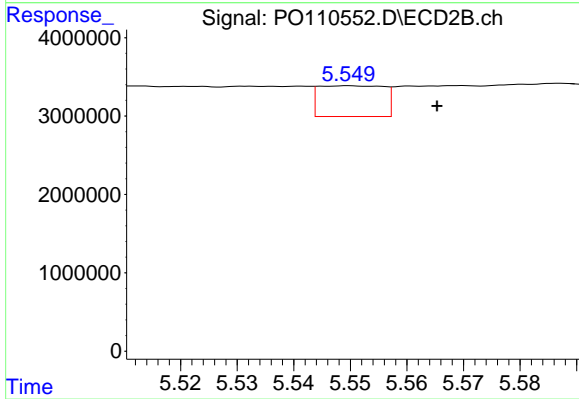
#19 AR-1242-4

R.T.: 5.047 min
 Delta R.T.: 0.003 min
 Response: 1159955
 Conc: 9.66 ng/ml



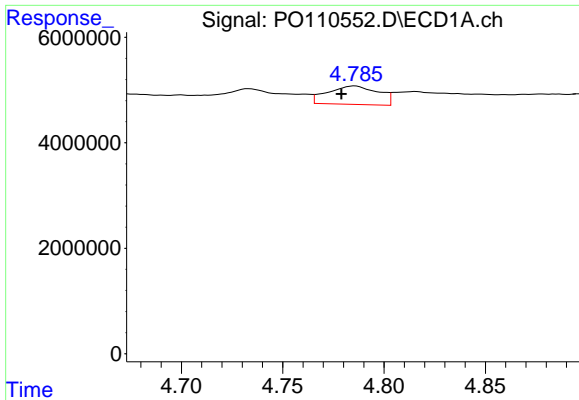
#20 AR-1242-5

R.T.: 5.633 min
 Delta R.T.: 0.005 min
 Response: 4519065
 Conc: 19.96 ng/ml



#20 AR-1242-5

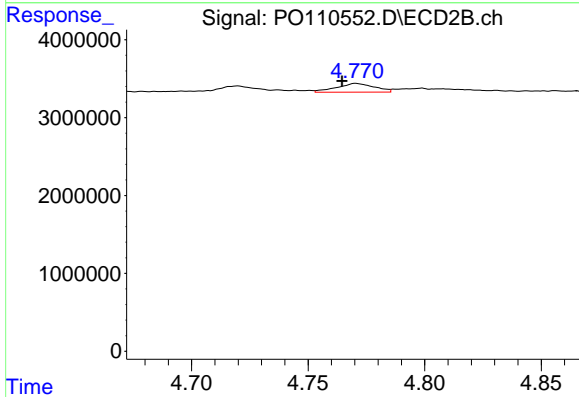
R.T.: 5.550 min
 Delta R.T.: -0.016 min
 Response: 3130302
 Conc: 21.57 ng/ml



#21 AR-1248-1

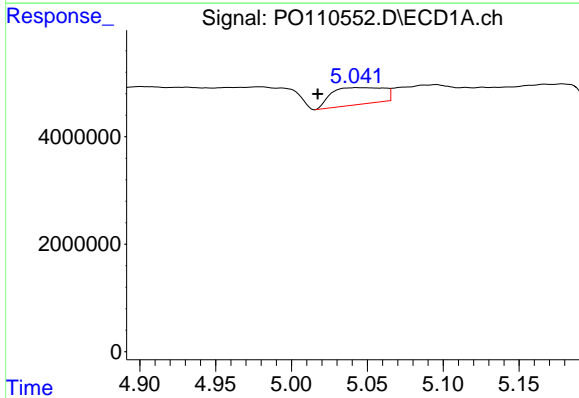
R.T.: 4.786 min
 Delta R.T.: 0.007 min
 Response: 6069860
 Conc: 28.52 ng/ml

Instrument :
 ECD_O
 ClientSampleId :



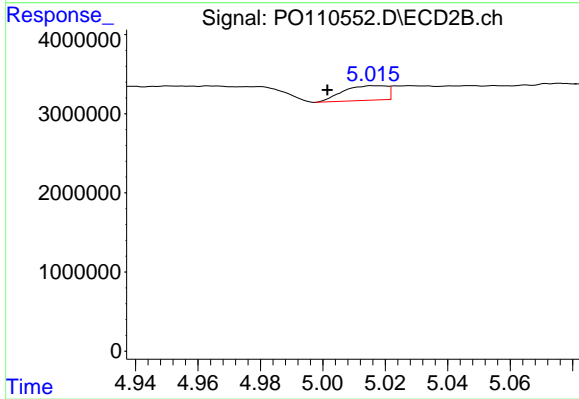
#21 AR-1248-1

R.T.: 4.771 min
 Delta R.T.: 0.006 min
 Response: 1272010
 Conc: 11.05 ng/ml



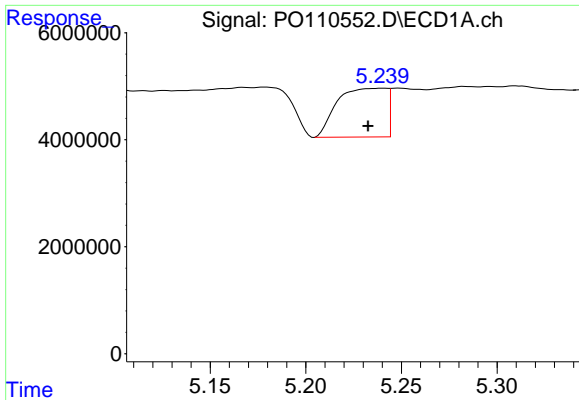
#22 AR-1248-2

R.T.: 5.043 min
 Delta R.T.: 0.026 min
 Response: 7471681
 Conc: 25.25 ng/ml



#22 AR-1248-2

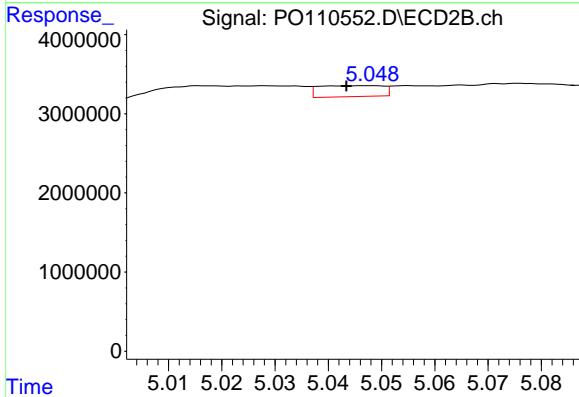
R.T.: 5.017 min
 Delta R.T.: 0.015 min
 Response: 1797514
 Conc: 11.04 ng/ml



#23 AR-1248-3

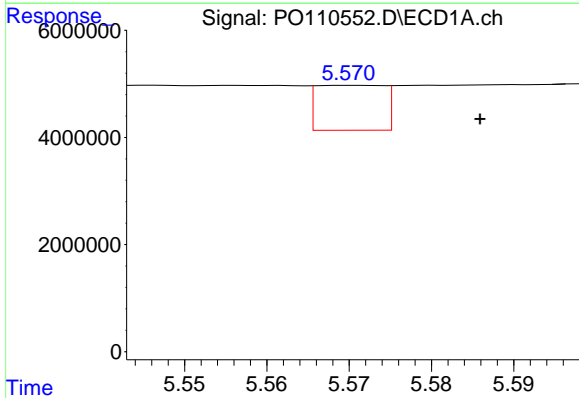
R.T.: 5.241 min
 Delta R.T.: 0.008 min
 Response: 16260300
 Conc: 43.95 ng/ml

Instrument :
 ECD_O
 ClientSampleId :



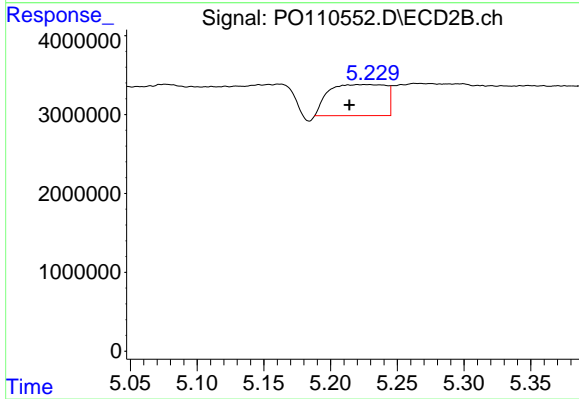
#23 AR-1248-3

R.T.: 5.047 min
 Delta R.T.: 0.004 min
 Response: 1159955
 Conc: 6.60 ng/ml



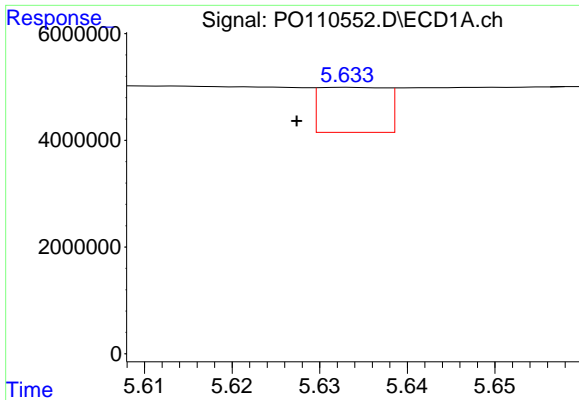
#24 AR-1248-4

R.T.: 5.570 min
 Delta R.T.: -0.015 min
 Response: 4789722
 Conc: 9.21 ng/ml



#24 AR-1248-4

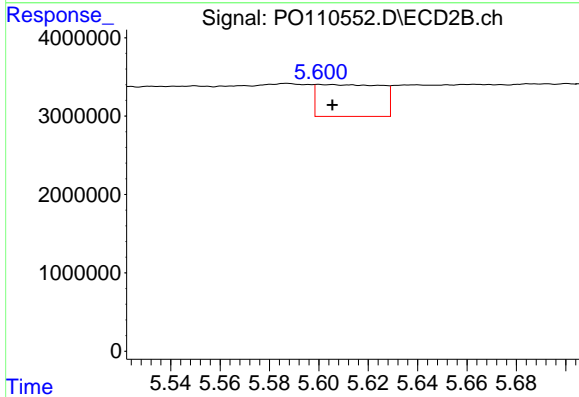
R.T.: 5.220 min
 Delta R.T.: 0.006 min
 Response: 11680179
 Conc: 57.35 ng/ml



#25 AR-1248-5

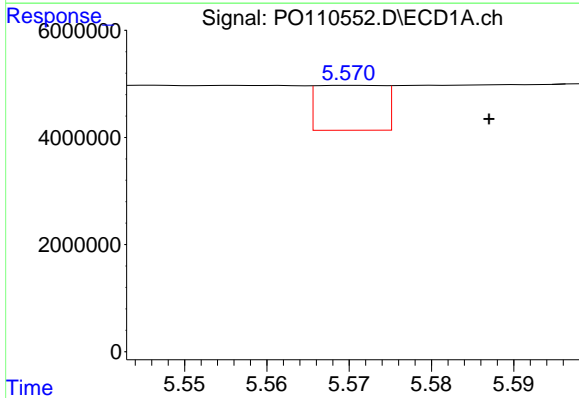
R.T.: 5.633 min
 Delta R.T.: 0.006 min
 Response: 4519065
 Conc: 12.23 ng/ml

Instrument :
 ECD_O
 ClientSampleId :



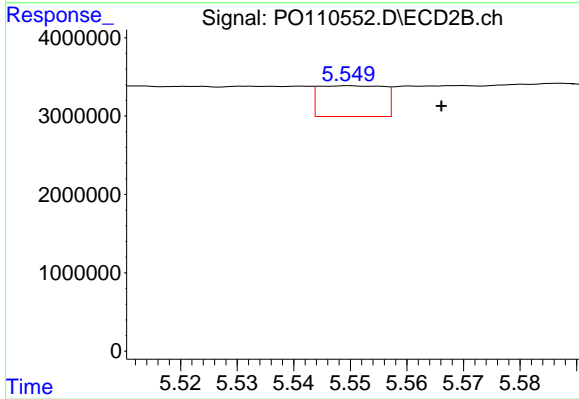
#25 AR-1248-5

R.T.: 5.599 min
 Delta R.T.: -0.006 min
 Response: 7341887
 Conc: 37.19 ng/ml



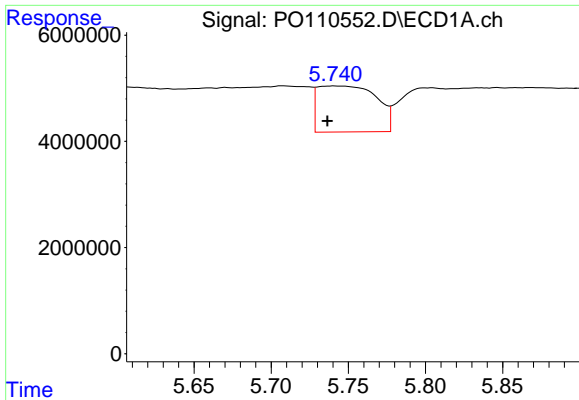
#26 AR-1254-1

R.T.: 5.570 min
 Delta R.T.: -0.017 min
 Response: 4789722
 Conc: 8.58 ng/ml



#26 AR-1254-1

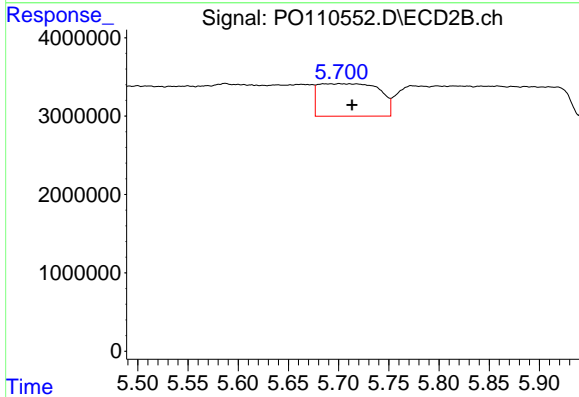
R.T.: 5.550 min
 Delta R.T.: -0.016 min
 Response: 3130302
 Conc: 10.38 ng/ml



#27 AR-1254-2

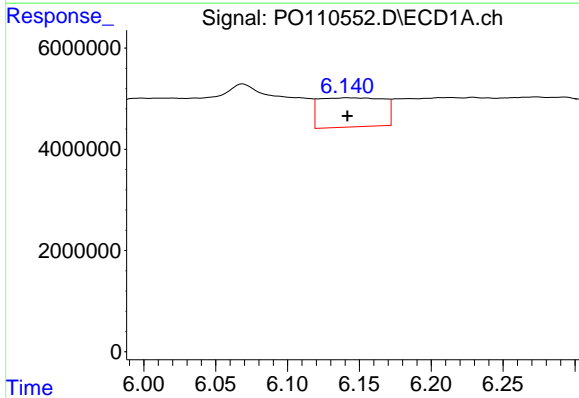
R.T.: 5.741 min
 Delta R.T.: 0.004 min
 Response: 22954193
 Conc: 47.26 ng/ml

Instrument :
 ECD_O
 ClientSampleId :



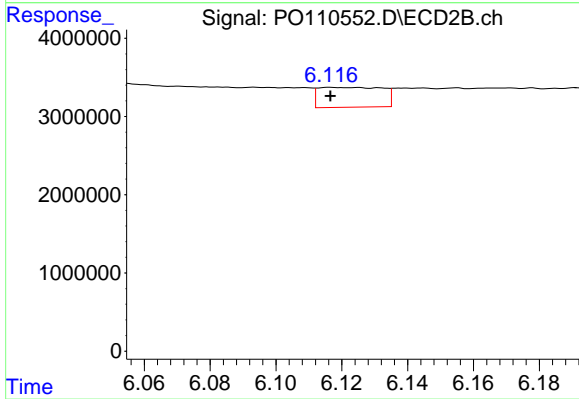
#27 AR-1254-2

R.T.: 5.685 min
 Delta R.T.: -0.028 min
 Response: 17408530
 Conc: 65.77 ng/ml



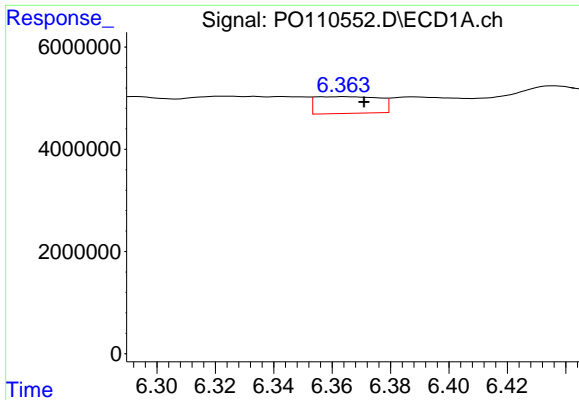
#28 AR-1254-3

R.T.: 6.141 min
 Delta R.T.: 0.000 min
 Response: 17897271
 Conc: 22.85 ng/ml



#28 AR-1254-3

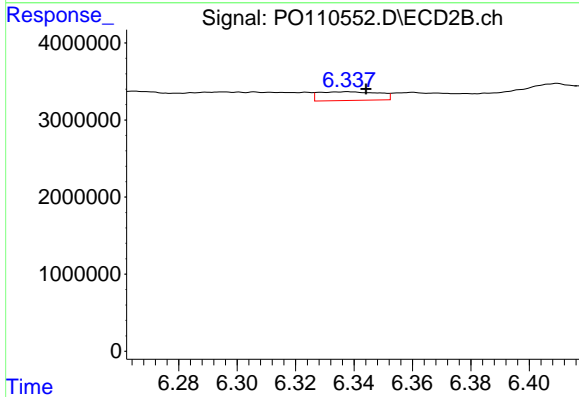
R.T.: 6.117 min
 Delta R.T.: 0.000 min
 Response: 3414782
 Conc: 8.46 ng/ml



#29 AR-1254-4

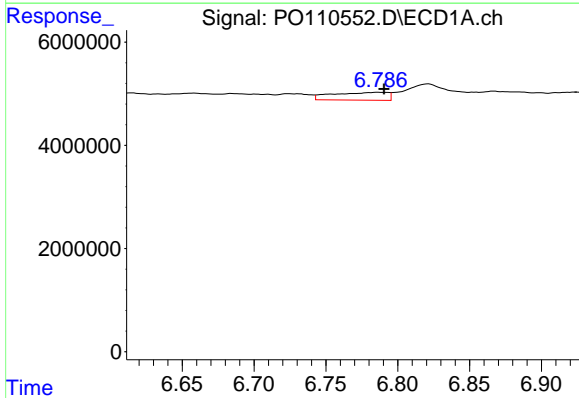
R.T.: 6.364 min
 Delta R.T.: -0.007 min
 Response: 4947404
 Conc: 10.15 ng/ml

Instrument :
 ECD_O
 ClientSampleId :



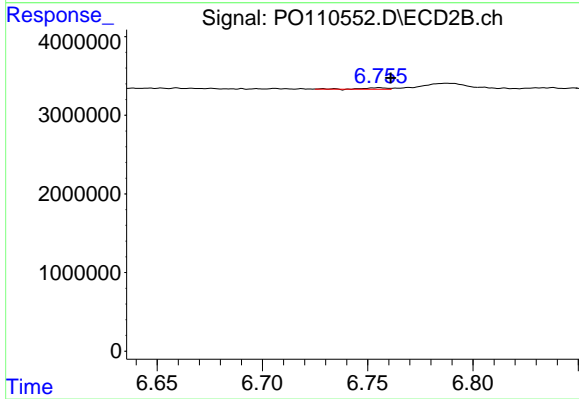
#29 AR-1254-4

R.T.: 6.338 min
 Delta R.T.: -0.006 min
 Response: 1612053
 Conc: 7.02 ng/ml



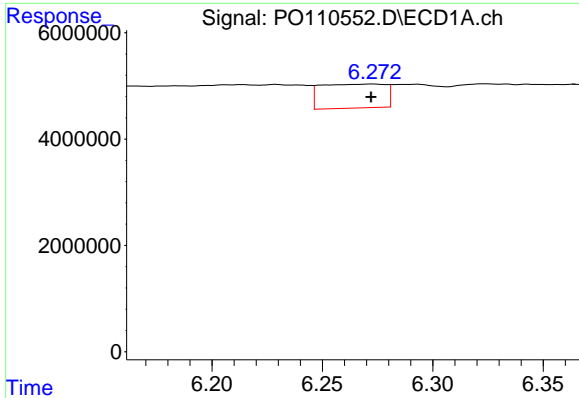
#30 AR-1254-5

R.T.: 6.787 min
 Delta R.T.: -0.004 min
 Response: 4043910
 Conc: 5.77 ng/ml



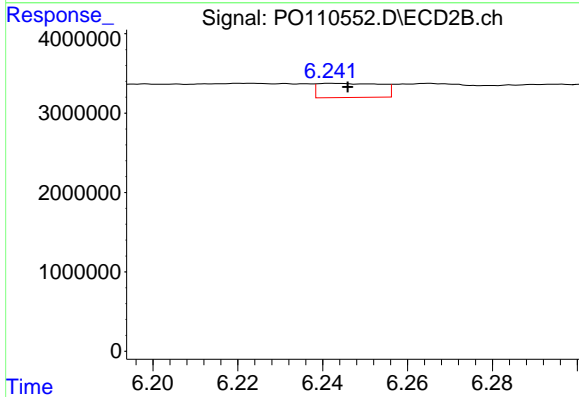
#30 AR-1254-5

R.T.: 6.755 min
 Delta R.T.: -0.006 min
 Response: 156555
 Conc: 0.47 ng/ml

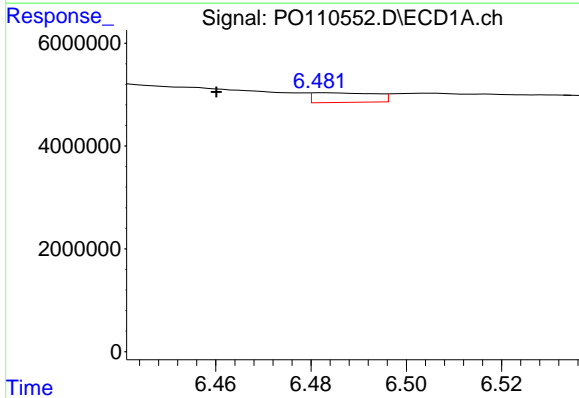


#31 AR-1260-1
 R.T.: 6.273 min
 Delta R.T.: 0.001 min
 Response: 9157991
 Conc: 19.38 ng/ml

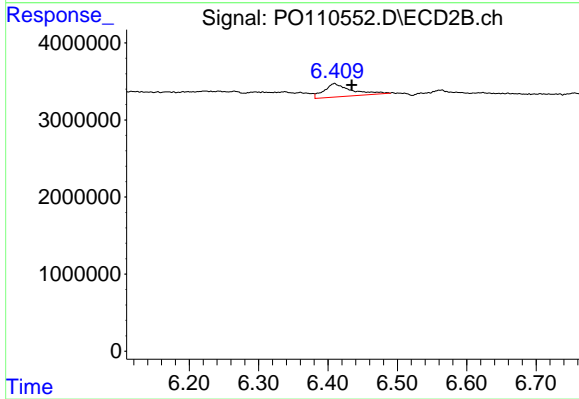
Instrument :
 ECD_O
 ClientSampleId :



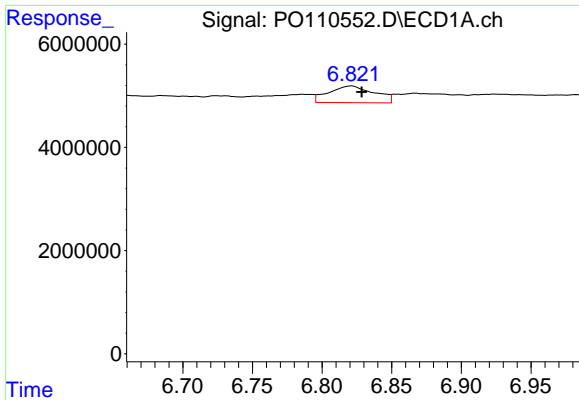
#31 AR-1260-1
 R.T.: 6.242 min
 Delta R.T.: -0.003 min
 Response: 1842413
 Conc: 7.49 ng/ml



#32 AR-1260-2
 R.T.: 6.483 min
 Delta R.T.: 0.023 min
 Response: 1723993
 Conc: 2.94 ng/ml



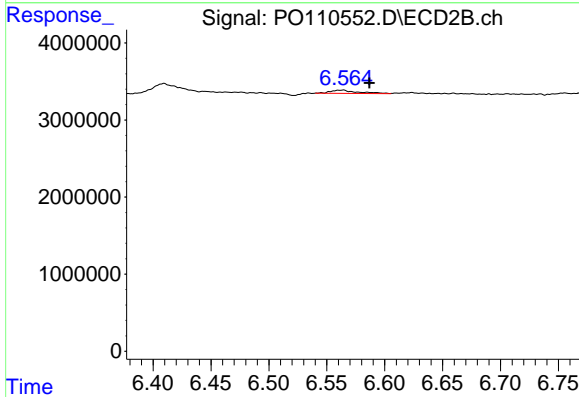
#32 AR-1260-2
 R.T.: 6.409 min
 Delta R.T.: -0.025 min
 Response: 4798977
 Conc: 16.45 ng/ml



#33 AR-1260-3

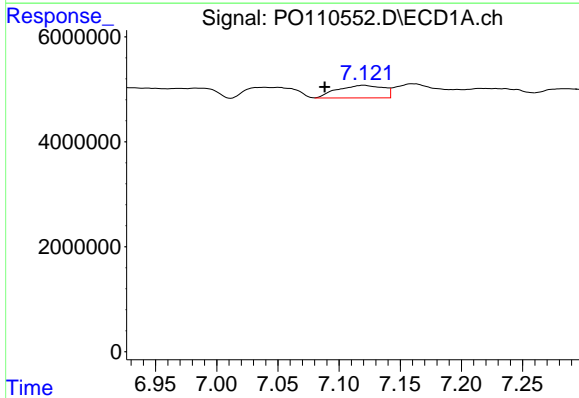
R.T.: 6.821 min
 Delta R.T.: -0.007 min
 Response: 7376995
 Conc: 14.97 ng/ml

Instrument :
 ECD_O
 ClientSampleId :



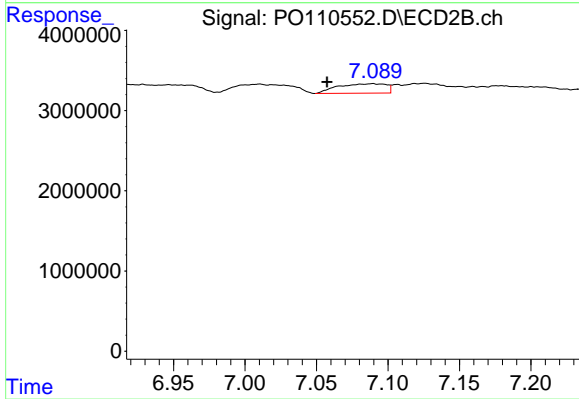
#33 AR-1260-3

R.T.: 6.564 min
 Delta R.T.: -0.023 min
 Response: 678045
 Conc: 2.50 ng/ml



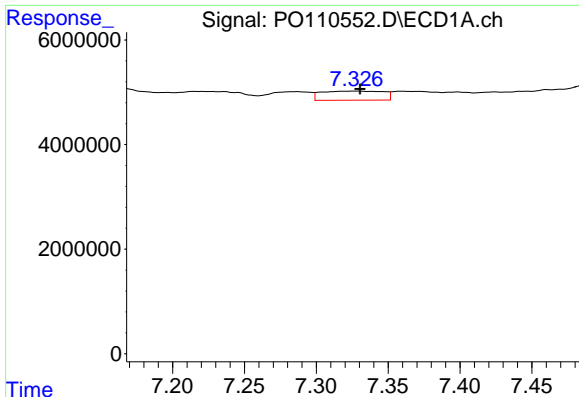
#34 AR-1260-4

R.T.: 7.120 min
 Delta R.T.: 0.032 min
 Response: 6288071
 Conc: 14.82 ng/ml



#34 AR-1260-4

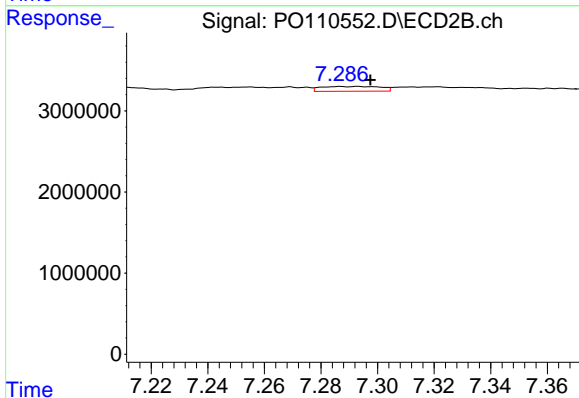
R.T.: 7.089 min
 Delta R.T.: 0.032 min
 Response: 2739301
 Conc: 13.65 ng/ml



#35 AR-1260-5

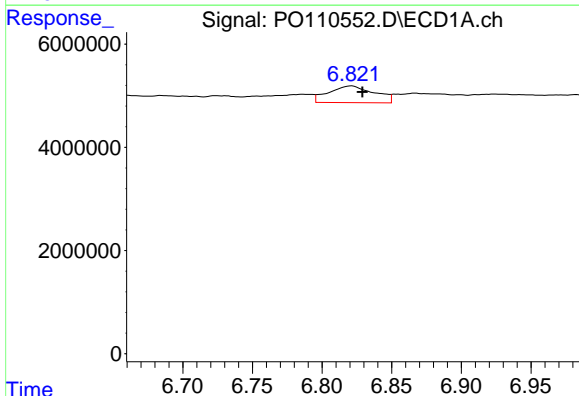
R.T.: 7.327 min
 Delta R.T.: -0.003 min
 Response: 5218399
 Conc: 5.00 ng/ml

Instrument :
 ECD_O
 ClientSampleId :



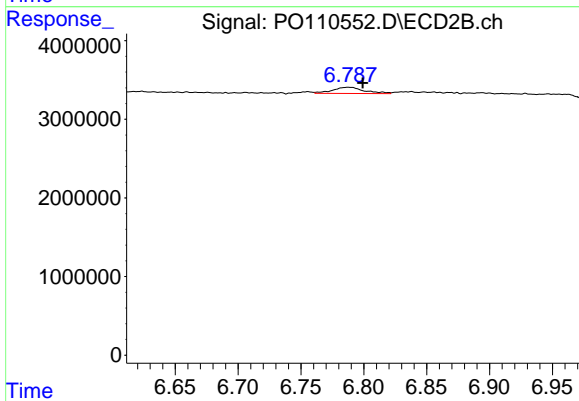
#35 AR-1260-5

R.T.: 7.293 min
 Delta R.T.: -0.004 min
 Response: 862003
 Conc: 1.88 ng/ml



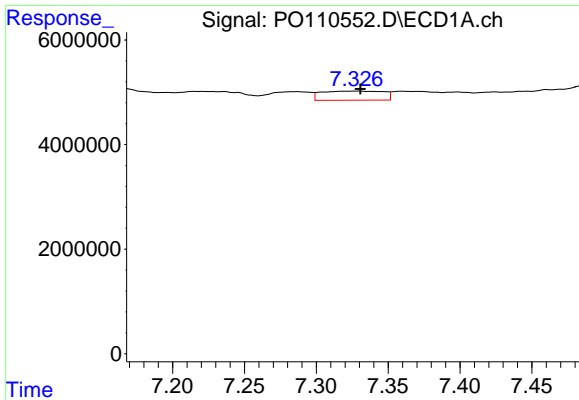
#36 AR-1262-1

R.T.: 6.821 min
 Delta R.T.: -0.008 min
 Response: 7376995
 Conc: 10.52 ng/ml



#36 AR-1262-1

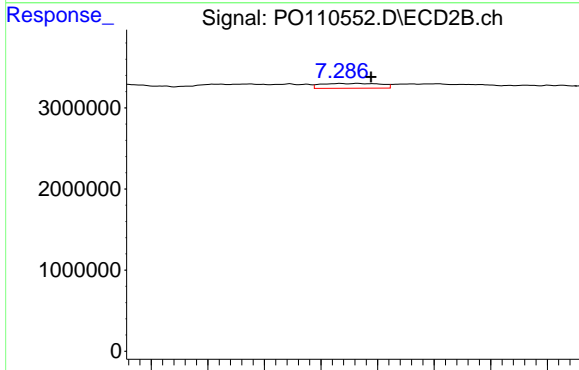
R.T.: 6.788 min
 Delta R.T.: -0.011 min
 Response: 1381694
 Conc: 4.20 ng/ml



#37 AR-1262-2

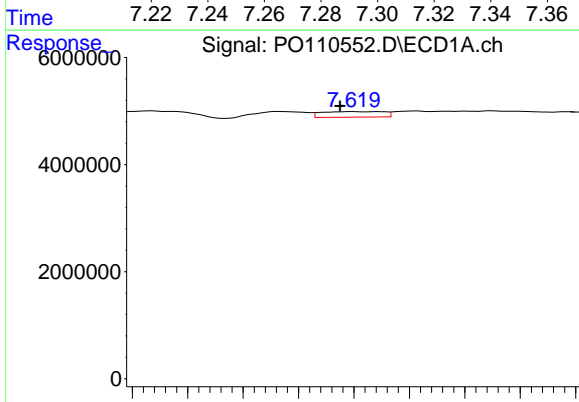
R.T.: 7.327 min
 Delta R.T.: -0.003 min
 Response: 5218399
 Conc: 4.32 ng/ml

Instrument :
 ECD_O
 ClientSampleId :



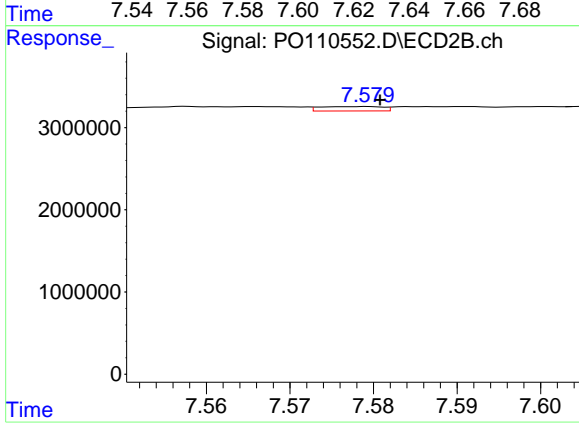
#37 AR-1262-2

R.T.: 7.293 min
 Delta R.T.: -0.005 min
 Response: 862003
 Conc: 1.70 ng/ml



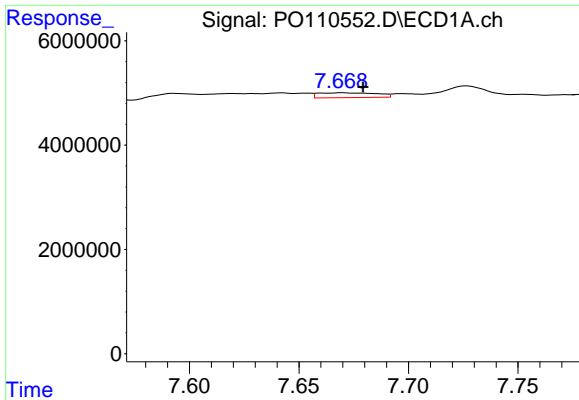
#38 AR-1262-3

R.T.: 7.619 min
 Delta R.T.: 0.004 min
 Response: 1616548
 Conc: 3.18 ng/ml



#38 AR-1262-3

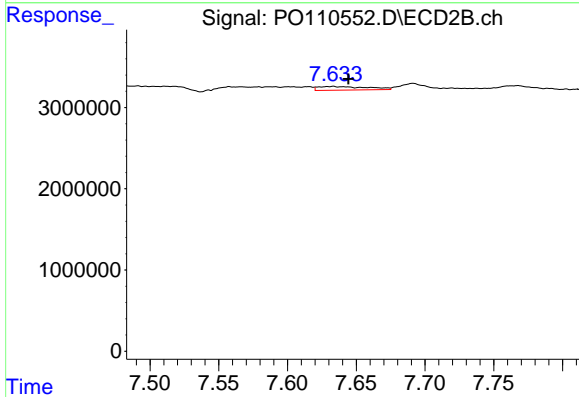
R.T.: 7.578 min
 Delta R.T.: -0.003 min
 Response: 282301
 Conc: 1.46 ng/ml



#39 AR-1262-4

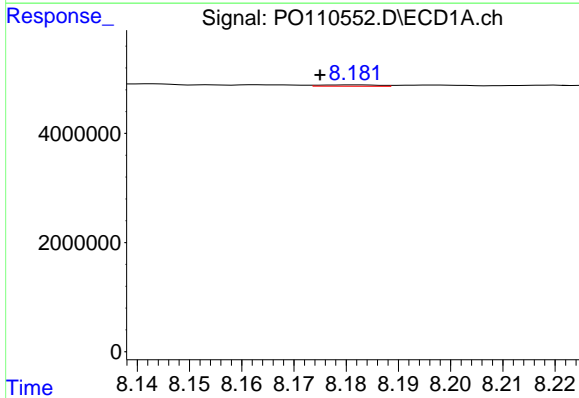
R.T.: 7.670 min
 Delta R.T.: -0.009 min
 Response: 1709695
 Conc: 1.91 ng/ml

Instrument :
 ECD_O
 ClientSampleId :



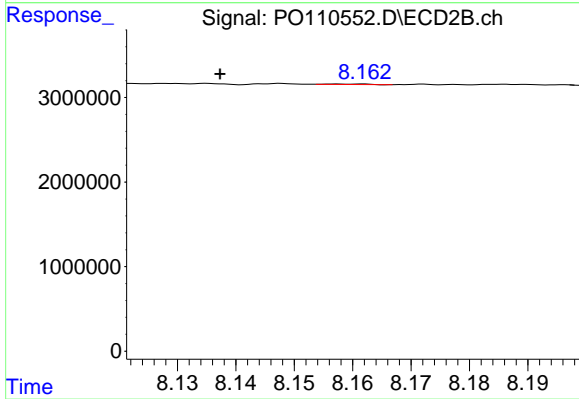
#39 AR-1262-4

R.T.: 7.633 min
 Delta R.T.: -0.011 min
 Response: 1121872
 Conc: 3.23 ng/ml



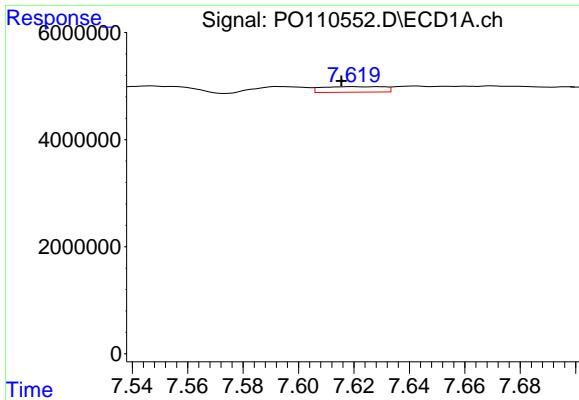
#40 AR-1262-5

R.T.: 8.181 min
 Delta R.T.: 0.006 min
 Response: 189571
 Conc: 0.47 ng/ml



#40 AR-1262-5

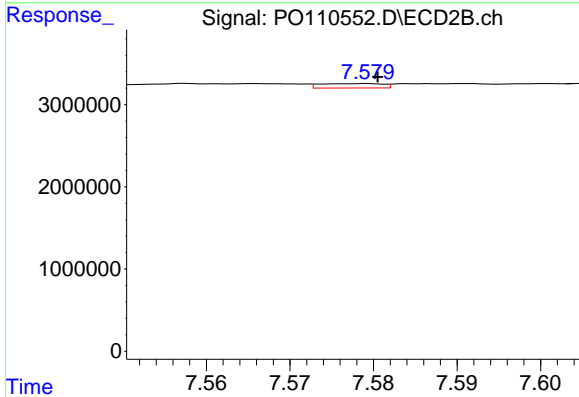
R.T.: 8.161 min
 Delta R.T.: 0.024 min
 Response: 30377
 Conc: 0.24 ng/ml



#41 AR-1268-1

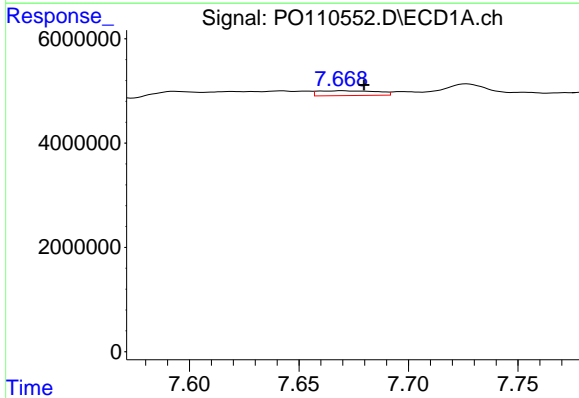
R.T.: 7.619 min
 Delta R.T.: 0.004 min
 Response: 1616548
 Conc: 1.15 ng/ml

Instrument :
 ECD_O
 ClientSampleId :



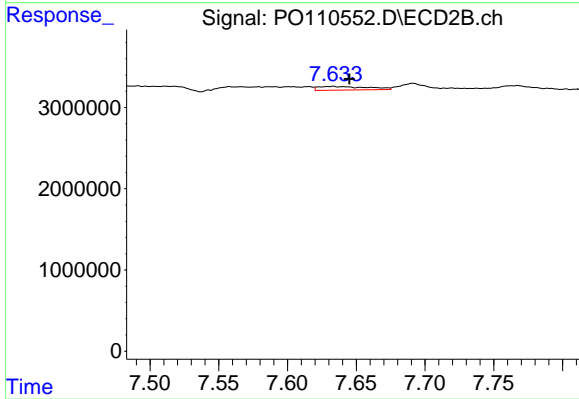
#41 AR-1268-1

R.T.: 7.578 min
 Delta R.T.: -0.002 min
 Response: 282301
 Conc: 0.52 ng/ml



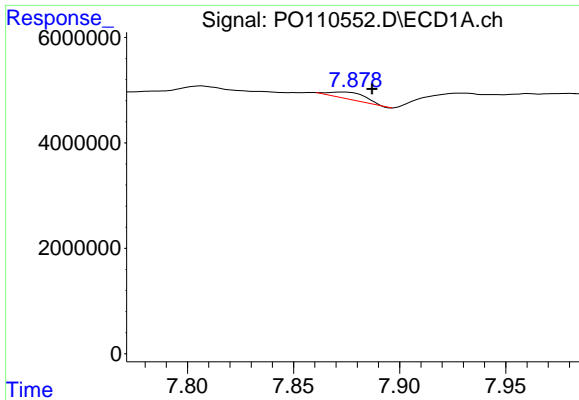
#42 AR-1268-2

R.T.: 7.670 min
 Delta R.T.: -0.010 min
 Response: 1709695
 Conc: 1.34 ng/ml



#42 AR-1268-2

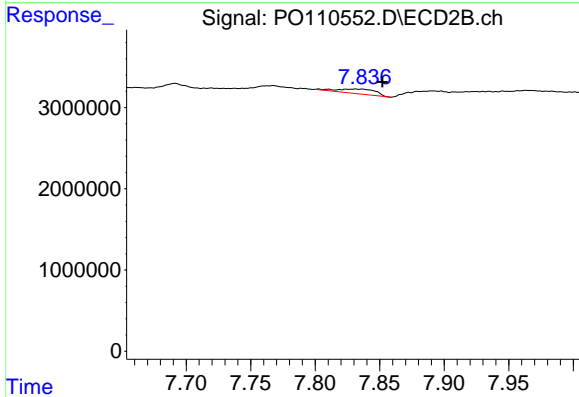
R.T.: 7.633 min
 Delta R.T.: -0.012 min
 Response: 1121872
 Conc: 2.26 ng/ml



#43 AR-1268-3

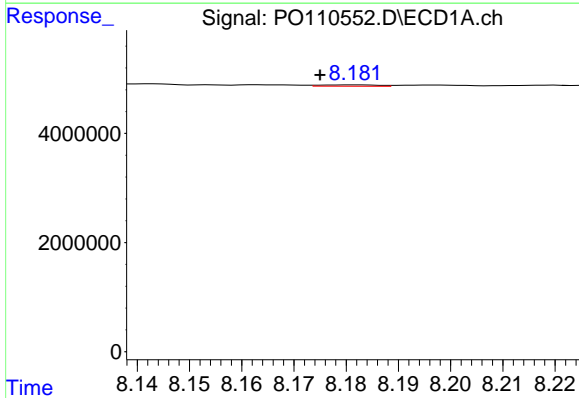
R.T.: 7.874 min
 Delta R.T.: -0.013 min
 Response: 1533861
 Conc: 1.47 ng/ml

Instrument :
 ECD_O
 ClientSampleId :



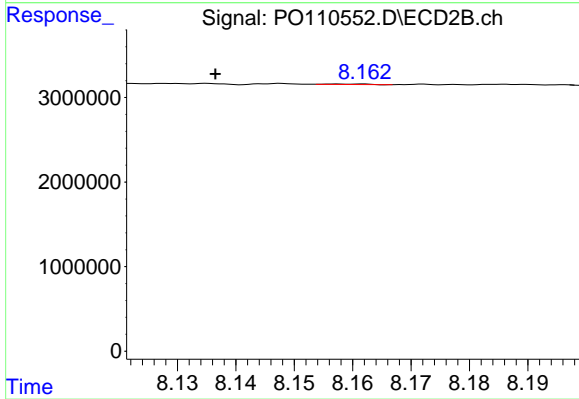
#43 AR-1268-3

R.T.: 7.831 min
 Delta R.T.: -0.021 min
 Response: 1189719
 Conc: 3.20 ng/ml



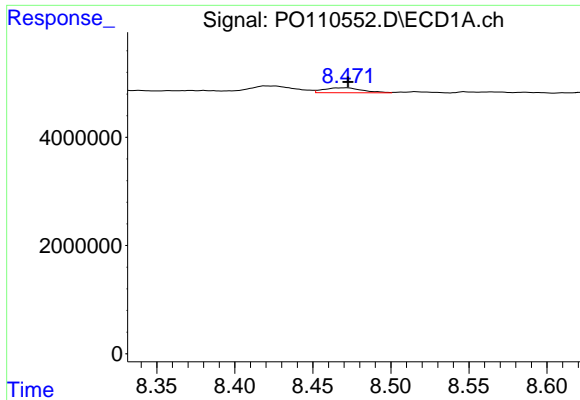
#44 AR-1268-4

R.T.: 8.181 min
 Delta R.T.: 0.006 min
 Response: 189571
 Conc: 0.43 ng/ml



#44 AR-1268-4

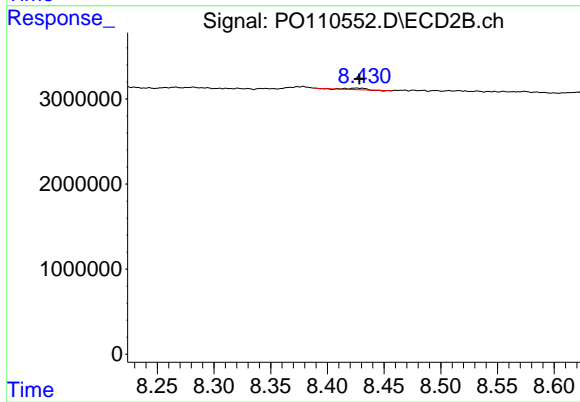
R.T.: 8.161 min
 Delta R.T.: 0.025 min
 Response: 30377
 Conc: 0.22 ng/ml



#45 AR-1268-5

R.T.: 8.472 min
Delta R.T.: 0.000 min
Response: 1547711
Conc: 0.48 ng/ml

Instrument :
ECD_O
ClientSampleId :



#45 AR-1268-5

R.T.: 8.426 min
Delta R.T.: -0.003 min
Response: 183004
Conc: 0.23 ng/ml