

Data Path : Z:\pestpcbsrv\HPCHEM1\ECD_O\Data\P0041923\
 Data File : P0094395.D
 Signal(s) : Signal #1: ECD1A.ch Signal #2: ECD2B.ch
 Acq On : 19 Apr 2023 23:51
 Operator : YP/AJ
 Sample : AR1268ICC1000
 Misc :
 ALS Vial : 26 Sample Multiplier: 1

Instrument :
 ECD_O
 ClientSampleId :
 AR1268ICC1000

Integration File signal 1: autoint1.e
 Integration File signal 2: autoint2.e
 Quant Time: Apr 20 04:45:45 2023
 Quant Method : Z:\pestpcbsrv\HPCHEM1\ECD_O\methods\P0041923.M
 Quant Title : GC EXTRACTABLES
 QLast Update : Thu Apr 20 04:42:56 2023
 Response via : Initial Calibration
 Integrator: ChemStation

Volume Inj. : 2 µl
 Signal #1 Phase : ZB-MR1 Signal #2 Phase: ZB-MR2
 Signal #1 Info : 30Mx0.32mmx 0.50µ Signal #2 Info : 30M x 0.32mm x 0.25µm

Compound	RT#1	RT#2	Resp#1	Resp#2	ng/ml	ng/ml

System Monitoring Compounds						
1) SA Tetrachlo...	4.415	3.617	334.7E6	129.1E6	98.311	97.643
2) SA Decachlor...	10.250	8.632	369.7E6	167.2E6	96.379	95.842
Target Compounds						
41) L9 AR-1268-1	8.710	7.527	304.7E6	156.0E6	976.779	968.716
42) L9 AR-1268-2	8.807	7.592	271.8E6	145.6E6	975.739	968.597
43) L9 AR-1268-3	9.039	7.799	254.1E6	127.9E6	975.873	964.787
44) L9 AR-1268-4	9.477	8.089	83544117	42796171	971.269	960.885
45) L9 AR-1268-5	9.903	8.380	779.6E6	357.0E6	982.896	977.394

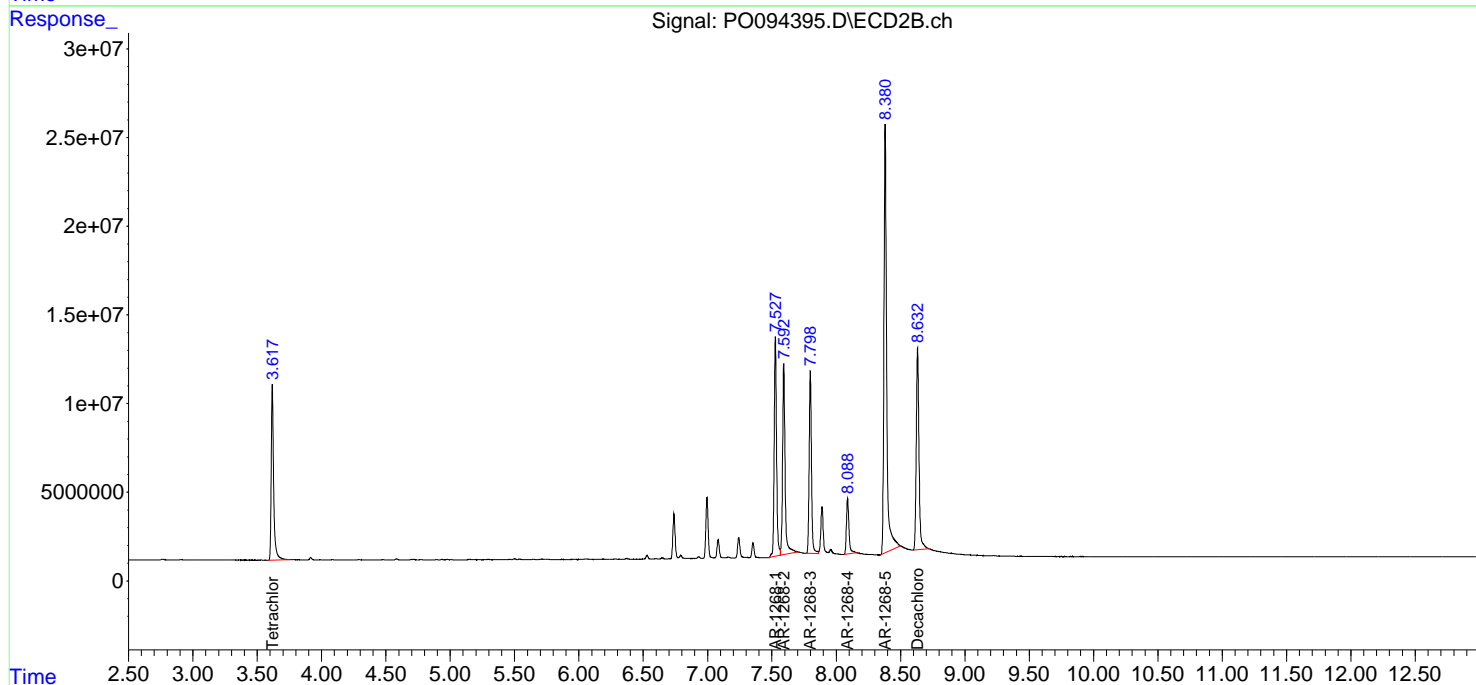
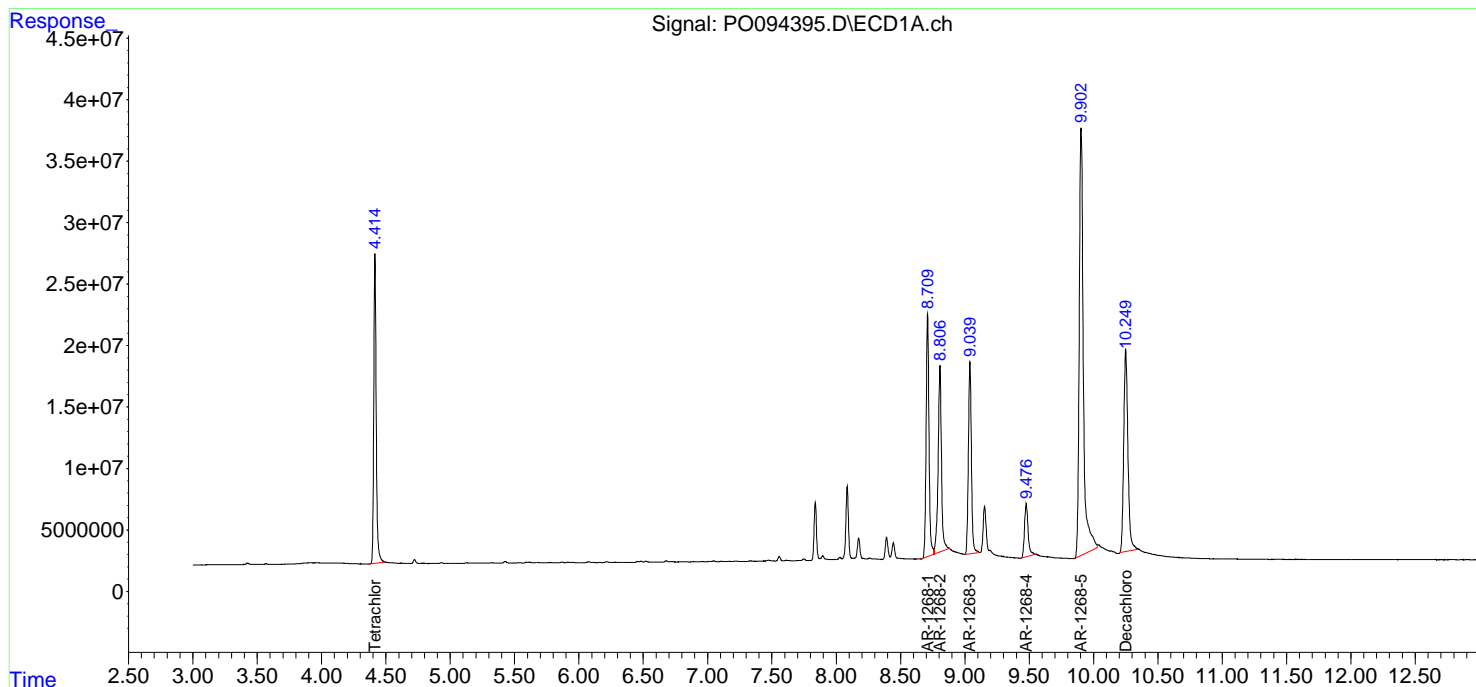
(f)=RT Delta > 1/2 Window (#)=Amounts differ by > 25% (m)=manual int.

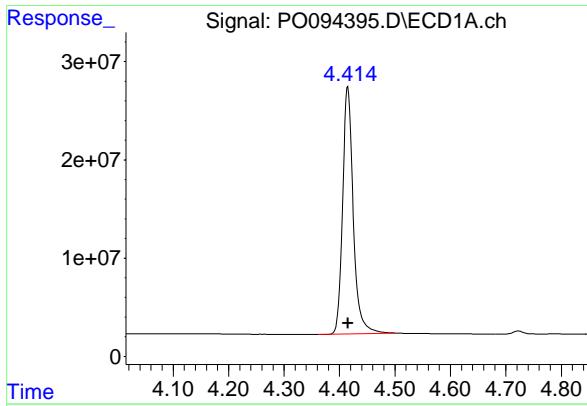
Data Path : Z:\pestpcbsrv\HPCHEM1\ECD_O\Data\PO041923\
 Data File : PO094395.D
 Signal(s) : Signal #1: ECD1A.ch Signal #2: ECD2B.ch
 Acq On : 19 Apr 2023 23:51
 Operator : YP/AJ
 Sample : AR1268ICC1000
 Misc :
 ALS Vial : 26 Sample Multiplier: 1

Instrument :
 ECD_O
 ClientSampleId :
 AR1268ICC1000

Integration File signal 1: autoint1.e
 Integration File signal 2: autoint2.e
 Quant Time: Apr 20 04:45:45 2023
 Quant Method : Z:\pestpcbsrv\HPCHEM1\ECD_O\methods\PO041923.M
 Quant Title : GC EXTRACTABLES
 QLast Update : Thu Apr 20 04:42:56 2023
 Response via : Initial Calibration
 Integrator: ChemStation

Volume Inj. : 2 µl
 Signal #1 Phase : ZB-MR1 Signal #2 Phase: ZB-MR2
 Signal #1 Info : 30Mx0.32mmx 0.50µm Signal #2 Info : 30M x 0.32mm x 0.25µm

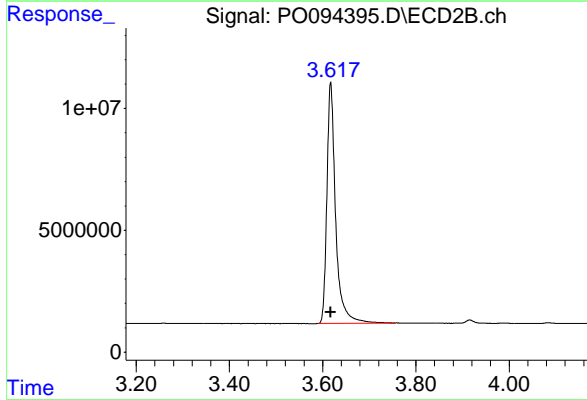




#1 Tetrachloro-m-xylene

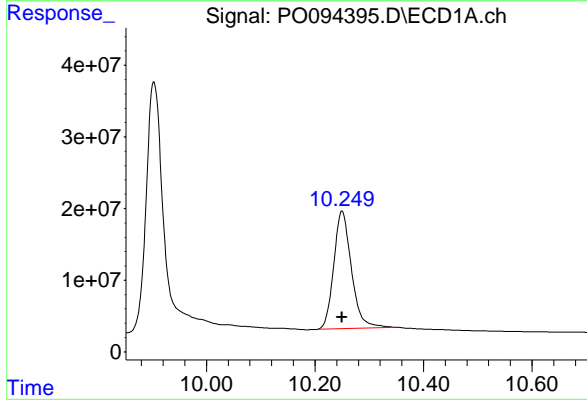
R.T.: 4.415 min
 Delta R.T.: 0.000 min
 Response: 334650174
 Conc: 98.31 ng/ml

Instrument :
 ECD_O
 ClientSampleId :
 AR1268ICC1000



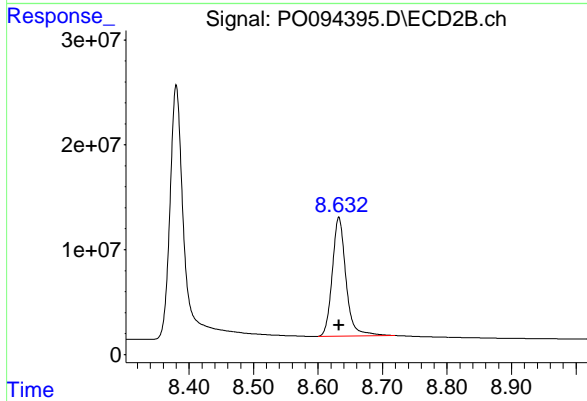
#1 Tetrachloro-m-xylene

R.T.: 3.617 min
 Delta R.T.: 0.000 min
 Response: 129108768
 Conc: 97.64 ng/ml



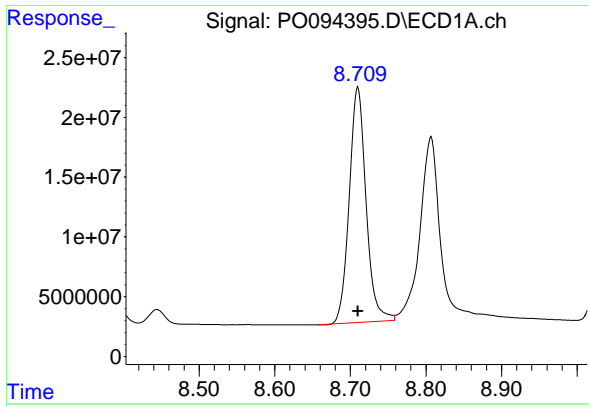
#2 Decachlorobiphenyl

R.T.: 10.250 min
 Delta R.T.: 0.000 min
 Response: 369705973
 Conc: 96.38 ng/ml



#2 Decachlorobiphenyl

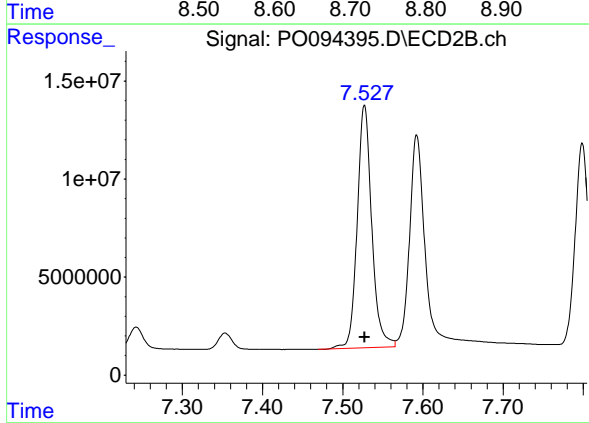
R.T.: 8.632 min
 Delta R.T.: 0.000 min
 Response: 167191158
 Conc: 95.84 ng/ml



#41 AR-1268-1

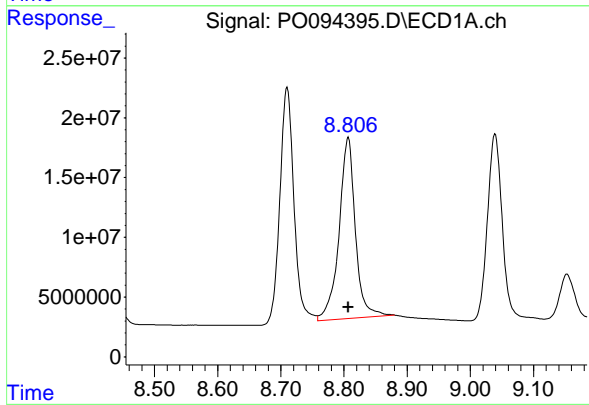
R.T.: 8.710 min
 Delta R.T.: 0.000 min
 Response: 304692945
 Conc: 976.78 ng/ml

Instrument :
 ECD_O
 ClientSampleId :
 AR1268ICC1000



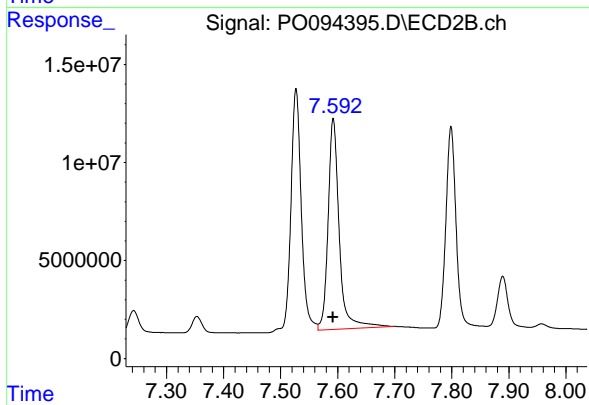
#41 AR-1268-1

R.T.: 7.527 min
 Delta R.T.: 0.000 min
 Response: 155991754
 Conc: 968.72 ng/ml



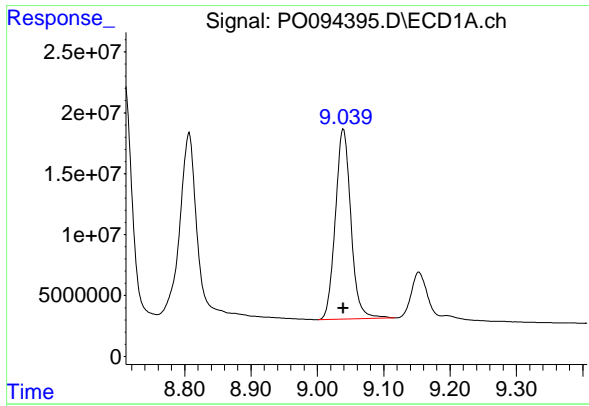
#42 AR-1268-2

R.T.: 8.807 min
 Delta R.T.: 0.000 min
 Response: 271767401
 Conc: 975.74 ng/ml



#42 AR-1268-2

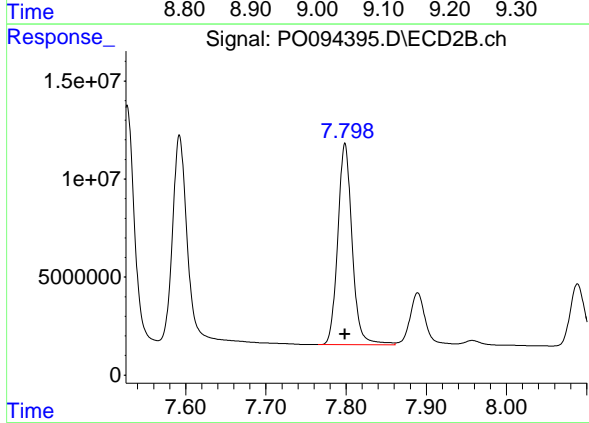
R.T.: 7.592 min
 Delta R.T.: 0.000 min
 Response: 145591167
 Conc: 968.60 ng/ml



#43 AR-1268-3

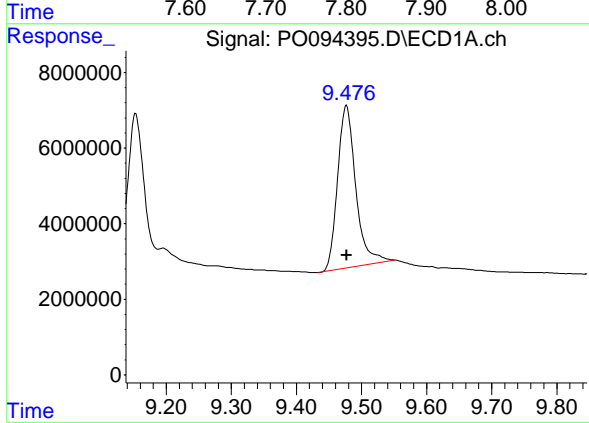
R.T.: 9.039 min
 Delta R.T.: 0.000 min
 Response: 254070881
 Conc: 975.87 ng/ml

Instrument :
 ECD_O
 ClientSampleId :
 AR1268ICC1000



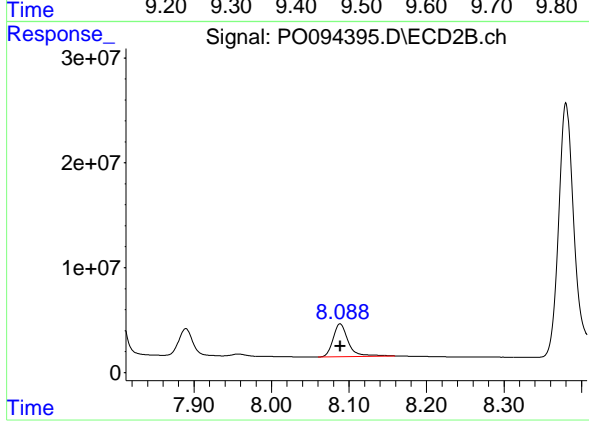
#43 AR-1268-3

R.T.: 7.799 min
 Delta R.T.: 0.000 min
 Response: 127941460
 Conc: 964.79 ng/ml



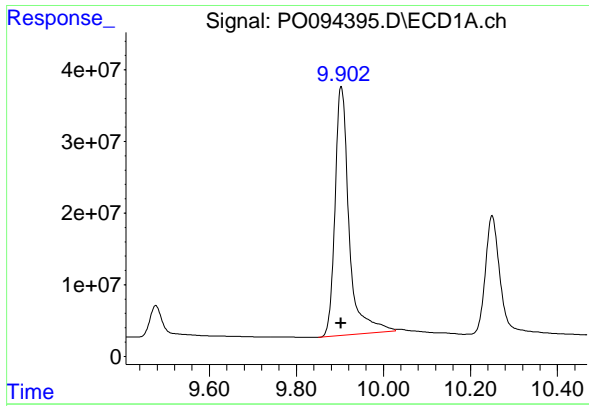
#44 AR-1268-4

R.T.: 9.477 min
 Delta R.T.: 0.000 min
 Response: 83544117
 Conc: 971.27 ng/ml



#44 AR-1268-4

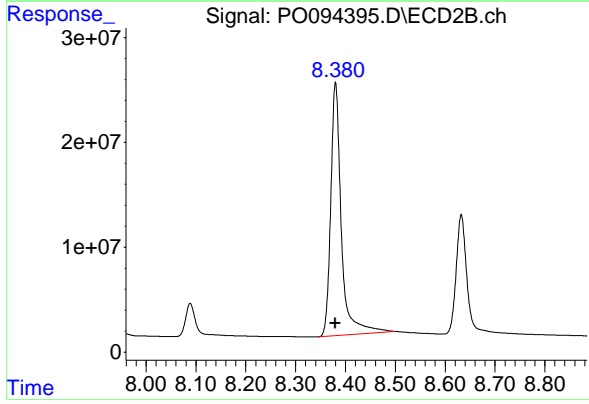
R.T.: 8.089 min
 Delta R.T.: 0.000 min
 Response: 42796171
 Conc: 960.89 ng/ml



#45 AR-1268-5

R.T.: 9.903 min
Delta R.T.: 0.000 min
Response: 779556701
Conc: 982.90 ng/ml

Instrument :
ECD_O
ClientSampleId :
AR1268ICC1000



#45 AR-1268-5

R.T.: 8.380 min
Delta R.T.: 0.000 min
Response: 357046821
Conc: 977.39 ng/ml