

Data Path : Z:\pestpcbsrv\HPCHEM1\ECD_0\Data\P0042121\
 Data File : P0077075.D
 Signal(s) : Signal #1: ECD1A.CH Signal #2: ECD2B.CH
 Acq On : 20 Apr 2021 20:50
 Operator : DD\AJ
 Sample : AR1248ICC500
 Misc :
 ALS Vial : 17 Sample Multiplier: 1

Instrument :
 ECD_0
 ClientSampleId :
 AR1248ICC500

Integration File signal 1: autoint1.e
 Integration File signal 2: autoint2.e
 Quant Time: Apr 21 09:15:18 2021
 Quant Method : Z:\pestpcbsrv\HPCHEM1\ECD_0\methods\P0042121.M
 Quant Title : GC EXTRACTABLES
 QLast Update : Wed Apr 21 09:15:01 2021
 Response via : Initial Calibration
 Integrator: ChemStation 6890 Scale Mode: Small noise peaks clipped

Volume Inj. : 2 µl
 Signal #1 Phase : ZB-MR1 Signal #2 Phase: ZB-MR2
 Signal #1 Info : 30Mx0.32mmx 0.50µ Signal #2 Info : 30M x 0.32mm x 0.25µm

Compound	RT#1	RT#2	Resp#1	Resp#2	ng/ml	ng/ml

System Monitoring Compounds						
1) SA Tetrachlo...	4.896	3.893	5292047	2609358	50.000	50.000
2) SA Decachlor...	10.863	9.133	4931052	1766379	50.000	50.000
Target Compounds						
21) L5 AR-1248-1	6.219	5.139	1045401	437203	500.000	500.000
22) L5 AR-1248-2	6.511	5.396	1511632	816527	500.000	500.000
23) L5 AR-1248-3	6.728	5.440	1768025	788448	500.000	500.000
24) L5 AR-1248-4	7.158	5.622	2012187	928622	500.000	500.000
25) L5 AR-1248-5	7.197	6.045	2074520	1056247	500.000	500.000

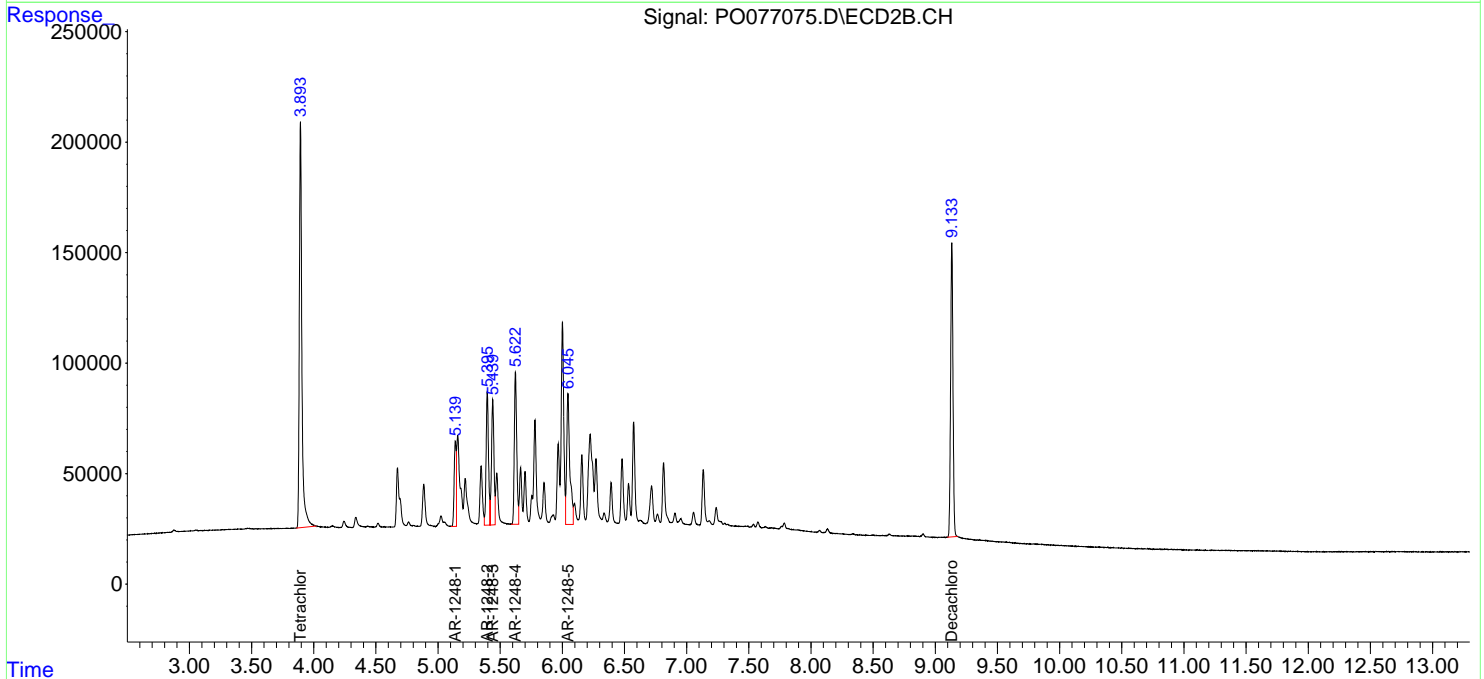
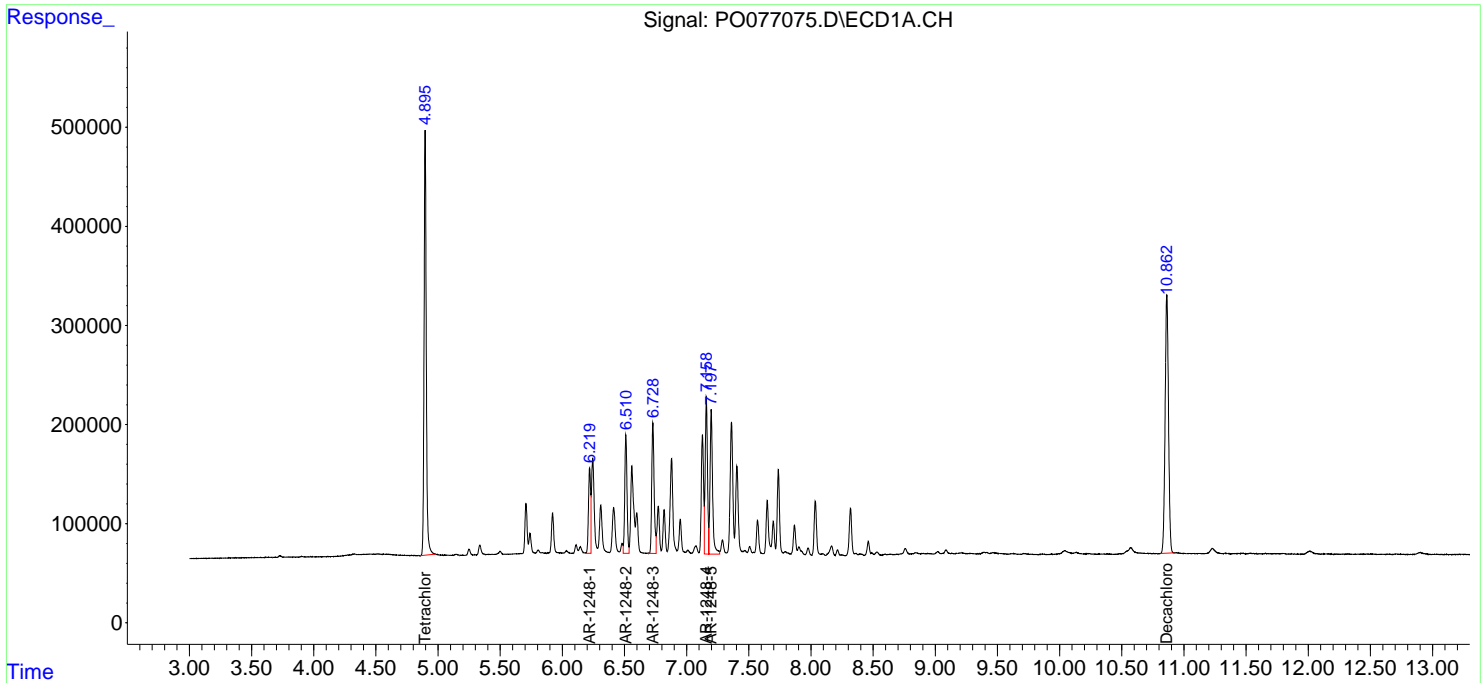
(f)=RT Delta > 1/2 Window (#)=Amounts differ by > 25% (m)=manual int.

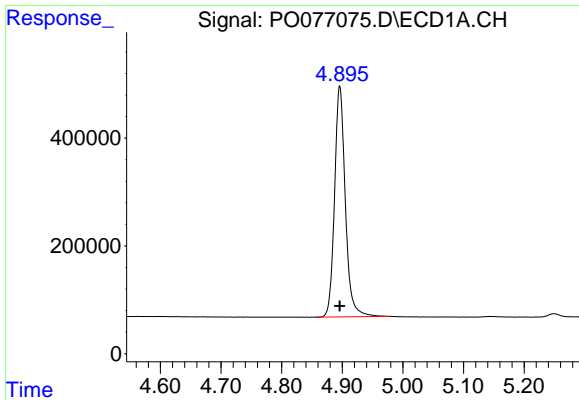
Data Path : Z:\pestpcbsrv\HPCHEM1\ECD_0\Data\P0042121\
 Data File : P0077075.D
 Signal(s) : Signal #1: ECD1A.CH Signal #2: ECD2B.CH
 Acq On : 20 Apr 2021 20:50
 Operator : DD\AJ
 Sample : AR1248ICC500
 Misc :
 ALS Vial : 17 Sample Multiplier: 1

Instrument :
 ECD_O
 ClientSampleId :
 AR1248ICC500

Integration File signal 1: autoint1.e
 Integration File signal 2: autoint2.e
 Quant Time: Apr 21 09:15:18 2021
 Quant Method : Z:\pestpcbsrv\HPCHEM1\ECD_0\methods\P0042121.M
 Quant Title : GC EXTRACTABLES
 QLast Update : Wed Apr 21 09:15:01 2021
 Response via : Initial Calibration
 Integrator: ChemStation 6890 Scale Mode: Small noise peaks clipped

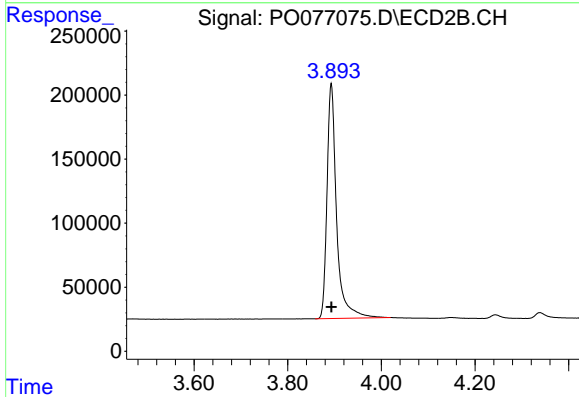
Volume Inj. : 2 µl
 Signal #1 Phase : ZB-MR1 Signal #2 Phase: ZB-MR2
 Signal #1 Info : 30Mx0.32mmx 0.50µ Signal #2 Info : 30M x 0.32mm x 0.25µm



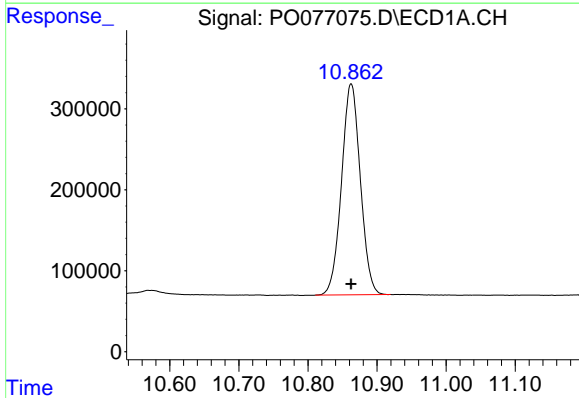


#1 Tetrachloro-m-xylene
 R.T.: 4.896 min
 Delta R.T.: 0.000 min
 Response: 5292047
 Conc: 50.00 ng/ml

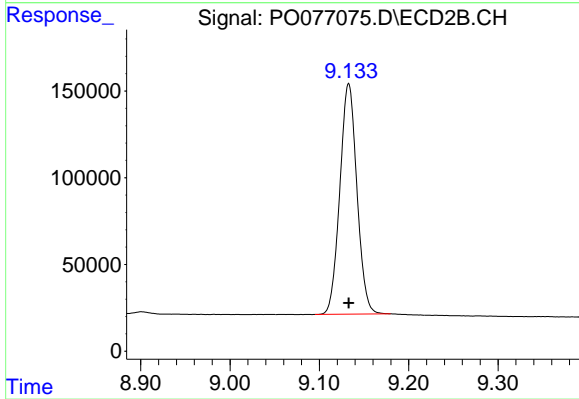
Instrument :
 ECD_O
 ClientSampled :
 AR1248ICC500



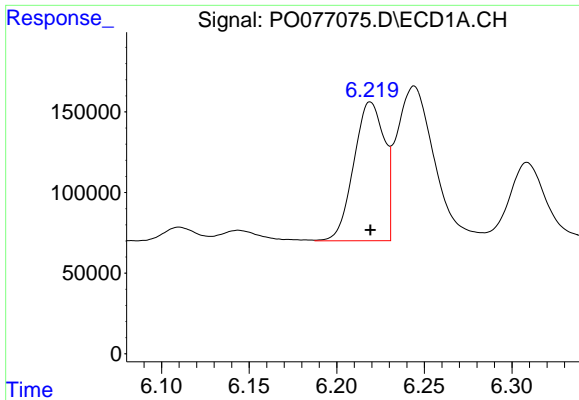
#1 Tetrachloro-m-xylene
 R.T.: 3.893 min
 Delta R.T.: 0.000 min
 Response: 2609358
 Conc: 50.00 ng/ml



#2 Decachlorobiphenyl
 R.T.: 10.863 min
 Delta R.T.: 0.000 min
 Response: 4931052
 Conc: 50.00 ng/ml



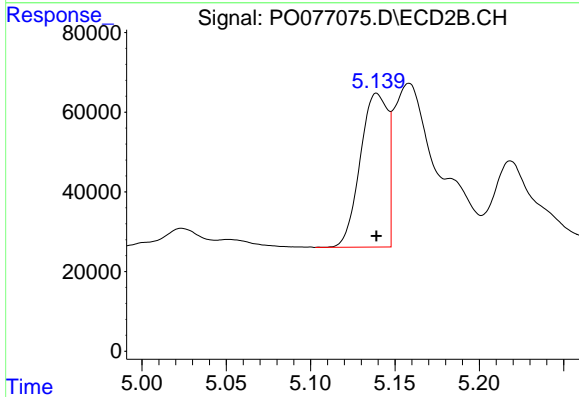
#2 Decachlorobiphenyl
 R.T.: 9.133 min
 Delta R.T.: 0.000 min
 Response: 1766379
 Conc: 50.00 ng/ml



#21 AR-1248-1

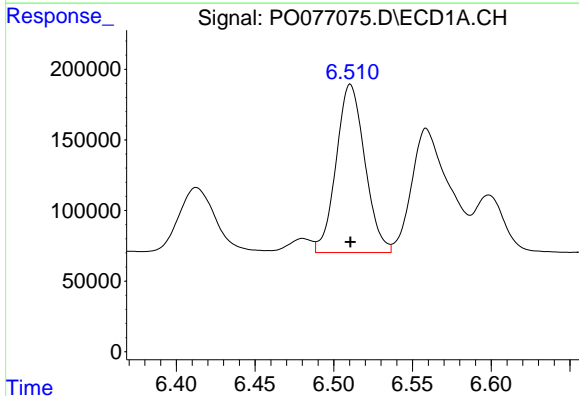
R.T.: 6.219 min
 Delta R.T.: 0.000 min
 Response: 1045401
 Conc: 500.00 ng/ml

Instrument :
 ECD_O
 ClientSampled :
 AR1248ICC500



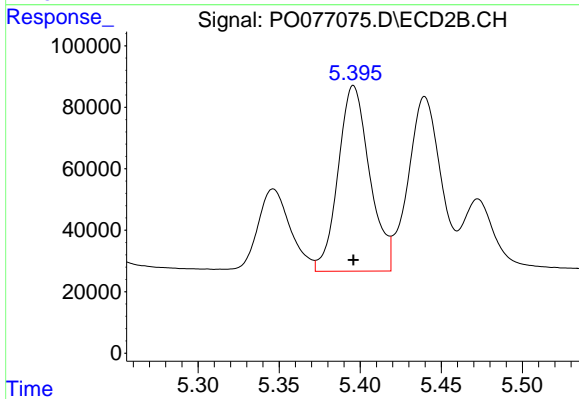
#21 AR-1248-1

R.T.: 5.139 min
 Delta R.T.: 0.000 min
 Response: 437203
 Conc: 500.00 ng/ml



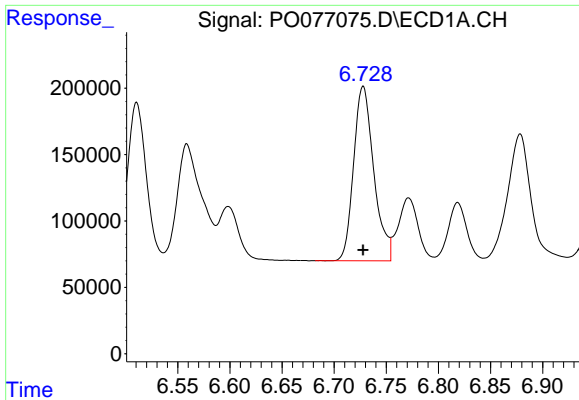
#22 AR-1248-2

R.T.: 6.511 min
 Delta R.T.: 0.000 min
 Response: 1511632
 Conc: 500.00 ng/ml



#22 AR-1248-2

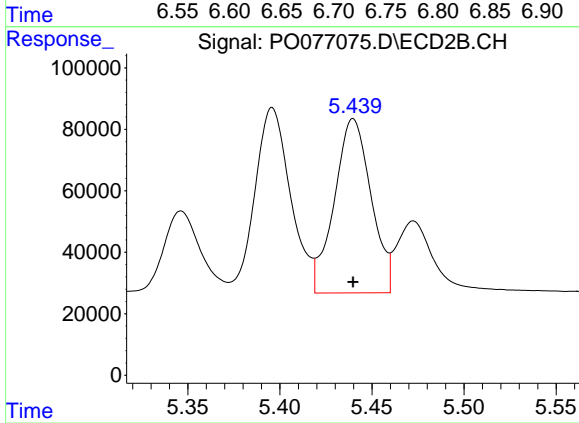
R.T.: 5.396 min
 Delta R.T.: 0.000 min
 Response: 816527
 Conc: 500.00 ng/ml



#23 AR-1248-3

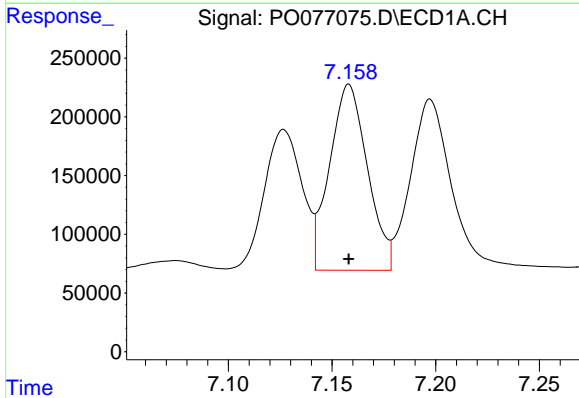
R.T.: 6.728 min
 Delta R.T.: 0.000 min
 Response: 1768025
 Conc: 500.00 ng/ml

Instrument :
 ECD_O
 ClientSampleId :
 AR1248ICC500



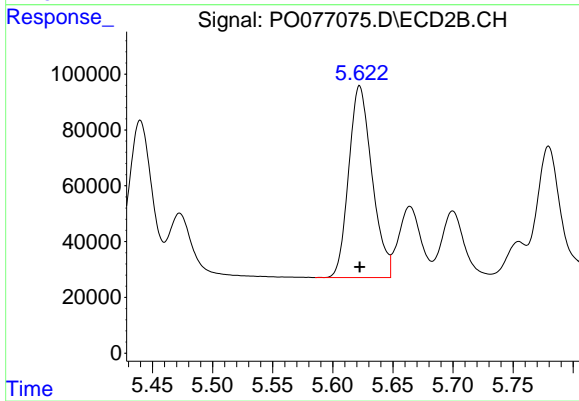
#23 AR-1248-3

R.T.: 5.440 min
 Delta R.T.: 0.000 min
 Response: 788448
 Conc: 500.00 ng/ml



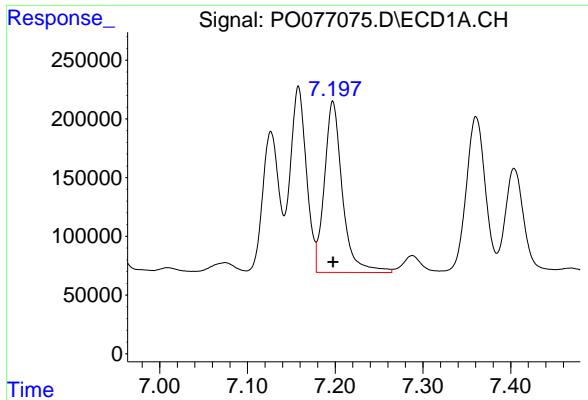
#24 AR-1248-4

R.T.: 7.158 min
 Delta R.T.: 0.000 min
 Response: 2012187
 Conc: 500.00 ng/ml



#24 AR-1248-4

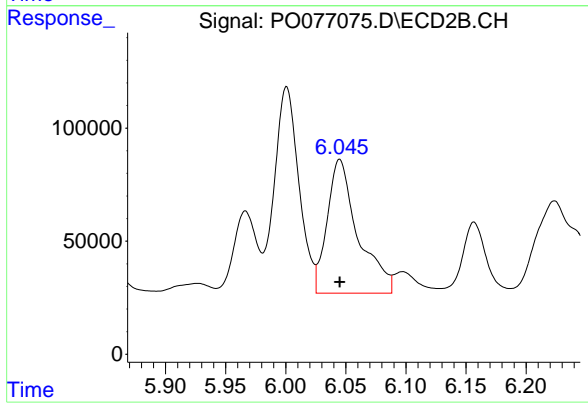
R.T.: 5.622 min
 Delta R.T.: 0.000 min
 Response: 928622
 Conc: 500.00 ng/ml



#25 AR-1248-5

R.T.: 7.197 min
Delta R.T.: 0.000 min
Response: 2074520
Conc: 500.00 ng/ml

Instrument :
ECD_O
ClientSampled :
AR1248ICC500



#25 AR-1248-5

R.T.: 6.045 min
Delta R.T.: 0.000 min
Response: 1056247
Conc: 500.00 ng/ml