

Data Path : Z:\pestpcbsrv\HPCHEM1\ECD\_0\Data\P0042121\  
 Data File : P0077096.D  
 Signal(s) : Signal #1: ECD1A.CH Signal #2: ECD2B.CH  
 Acq On : 21 Apr 2021 2:51  
 Operator : DD\AJ  
 Sample : AR1254ICV500  
 Misc :  
 ALS Vial : 38 Sample Multiplier: 1

**Instrument :**  
 ECD\_0  
**ClientSampleId :**  
 ICVPO042121AR1254

**Manual Integrations**  
**APPROVED**  
 Ankita  
 4/22/2021 9:47:23 AM

Integration File signal 1: autoint1.e  
 Integration File signal 2: autoint2.e  
 Quant Time: Apr 21 09:54:26 2021  
 Quant Method : Z:\pestpcbsrv\HPCHEM1\ECD\_0\methods\P0042121.M  
 Quant Title : GC EXTRACTABLES  
 QLast Update : Wed Apr 21 09:50:22 2021  
 Response via : Initial Calibration  
 Integrator: ChemStation 6890 Scale Mode: Small noise peaks clipped

Volume Inj. : 2 µl  
 Signal #1 Phase : ZB-MR1 Signal #2 Phase: ZB-MR2  
 Signal #1 Info : 30Mx0.32mmx 0.50µ Signal #2 Info : 30M x 0.32mm x 0.25µm

| Compound                    | RT#1   | RT#2  | Resp#1  | Resp#2  | ng/ml    | ng/ml   |
|-----------------------------|--------|-------|---------|---------|----------|---------|
| -----                       |        |       |         |         |          |         |
| System Monitoring Compounds |        |       |         |         |          |         |
| 1) SA Tetrachlo...          | 4.895  | 3.892 | 5327547 | 2599573 | 50.411   | 49.411  |
| 2) SA Decachlor...          | 10.860 | 9.131 | 5008163 | 1748377 | 48.238   | 46.335  |
| Target Compounds            |        |       |         |         |          |         |
| 26) L6 AR-1254-1            | 7.124  | 5.997 | 2097893 | 1438997 | 510.166  | 498.511 |
| 27) L6 AR-1254-2            | 7.354  | 6.156 | 3279806 | 1298388 | 506.750  | 502.906 |
| 28) L6 AR-1254-3            | 7.736  | 6.573 | 3241438 | 1972468 | 479.016m | 504.153 |
| 29) L6 AR-1254-4            | 8.033  | 6.814 | 2531254 | 1157357 | 514.714  | 509.390 |
| 30) L6 AR-1254-5            | 8.459  | 7.237 | 2878316 | 1910711 | 517.037  | 526.980 |
| -----                       |        |       |         |         |          |         |

(f)=RT Delta > 1/2 Window (#)=Amounts differ by > 25% (m)=manual int.

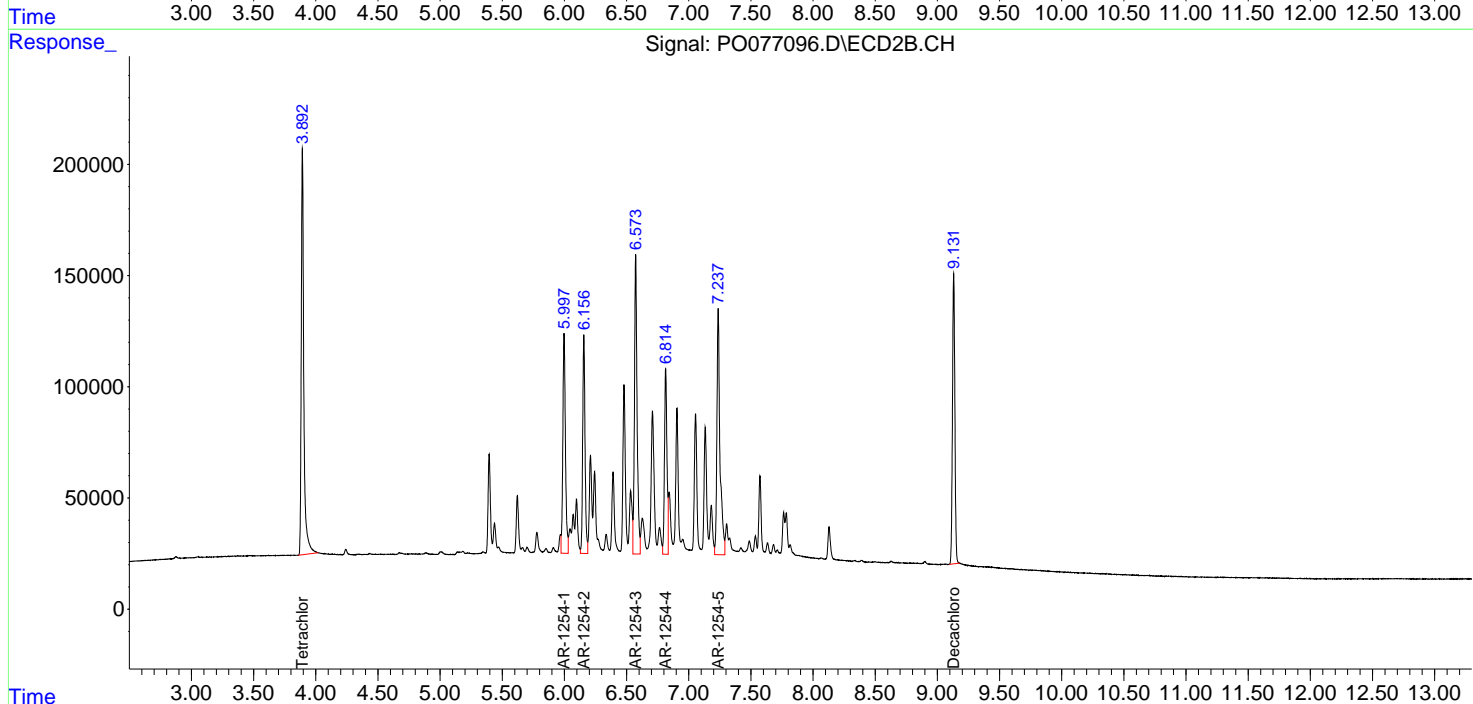
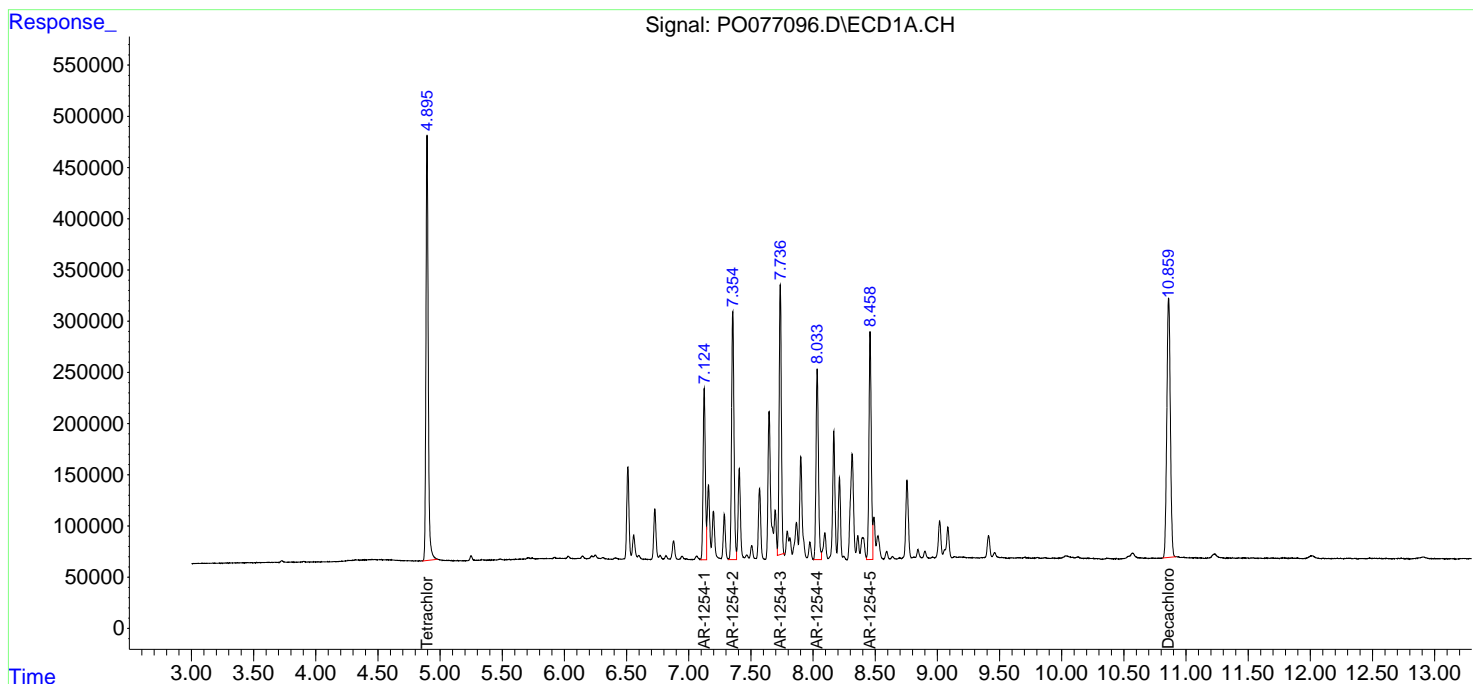
Data Path : Z:\pestpcbsrv\HPCHEM1\ECD\_0\Data\P0042121\  
 Data File : P0077096.D  
 Signal(s) : Signal #1: ECD1A.CH Signal #2: ECD2B.CH  
 Acq On : 21 Apr 2021 2:51  
 Operator : DD\AJ  
 Sample : AR1254ICV500  
 Misc :  
 ALS Vial : 38 Sample Multiplier: 1

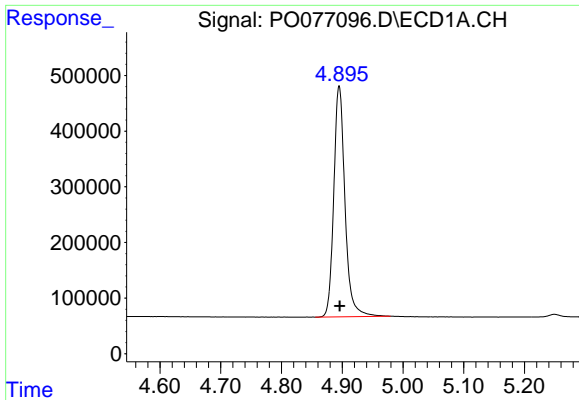
**Instrument :**  
 ECD\_O  
**Client Sampled :**  
 ICVPO042121AR1254

**Manual Integrations**  
**APPROVED**  
 Ankita  
 4/22/2021 9:47:23 AM

Integration File signal 1: autoint1.e  
 Integration File signal 2: autoint2.e  
 Quant Time: Apr 21 09:54:26 2021  
 Quant Method : Z:\pestpcbsrv\HPCHEM1\ECD\_0\methods\P0042121.M  
 Quant Title : GC EXTRACTABLES  
 QLast Update : Wed Apr 21 09:50:22 2021  
 Response via : Initial Calibration  
 Integrator: ChemStation 6890 Scale Mode: Small noise peaks clipped

Volume Inj. : 2 µl  
 Signal #1 Phase : ZB-MR1 Signal #2 Phase: ZB-MR2  
 Signal #1 Info : 30Mx0.32mmx 0.50µ Signal #2 Info : 30M x 0.32mm x 0.25µm

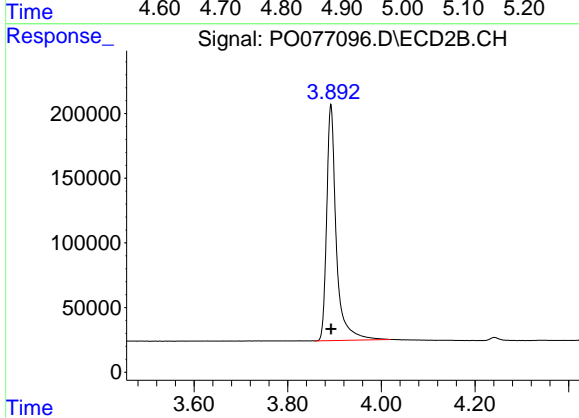




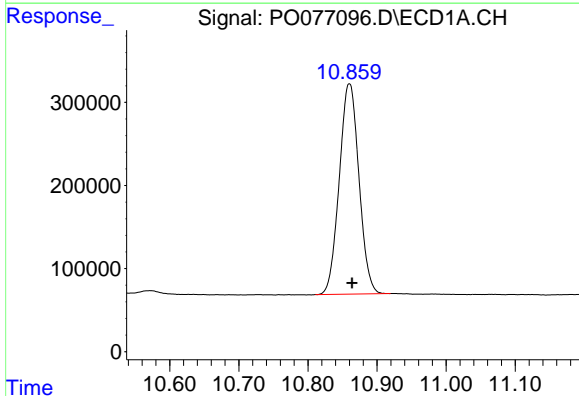
#1 Tetrachloro-m-xylene  
 R.T.: 4.895 min  
 Delta R.T.: 0.000 min  
 Response: 5327547  
 Conc: 50.41 ng/ml

Instrument :  
 ECD\_O  
 ClientSampleId :  
 ICVPO042121AR1254

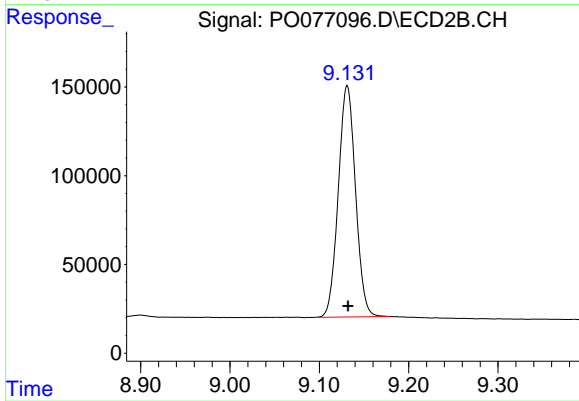
Manual Integrations  
 APPROVED  
 Ankita  
 4/22/2021 9:47:23 AM



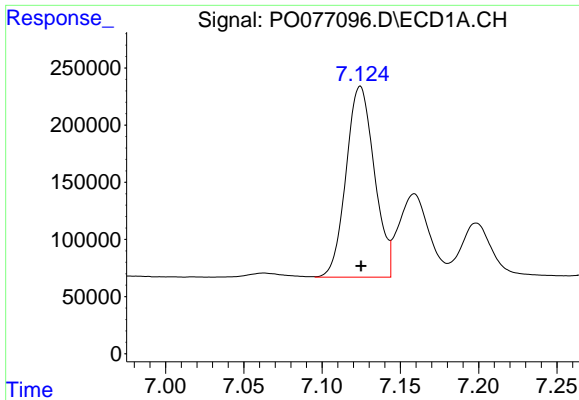
#1 Tetrachloro-m-xylene  
 R.T.: 3.892 min  
 Delta R.T.: 0.000 min  
 Response: 2599573  
 Conc: 49.41 ng/ml



#2 Decachlorobiphenyl  
 R.T.: 10.860 min  
 Delta R.T.: -0.004 min  
 Response: 5008163  
 Conc: 48.24 ng/ml



#2 Decachlorobiphenyl  
 R.T.: 9.131 min  
 Delta R.T.: -0.001 min  
 Response: 1748377  
 Conc: 46.33 ng/ml

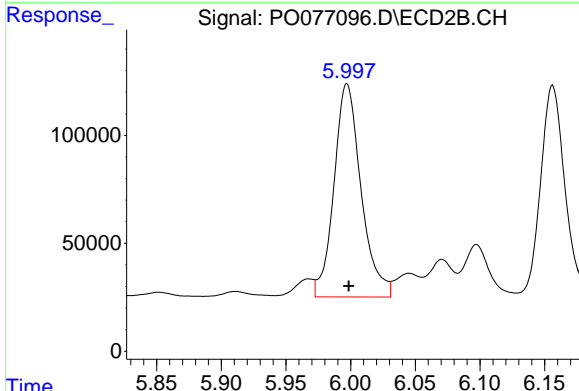


#26 AR-1254-1

R.T.: 7.124 min  
 Delta R.T.: 0.000 min  
 Response: 2097893  
 Conc: 510.17 ng/ml

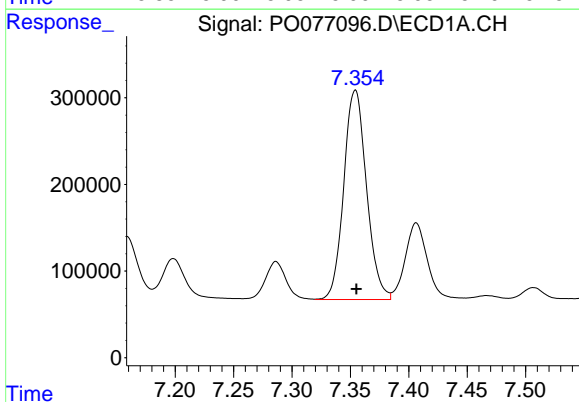
Instrument :  
 ECD\_O  
 ClientSampled :  
 ICVPO042121AR1254

Manual Integrations  
 APPROVED  
 Ankita  
 4/22/2021 9:47:23 AM



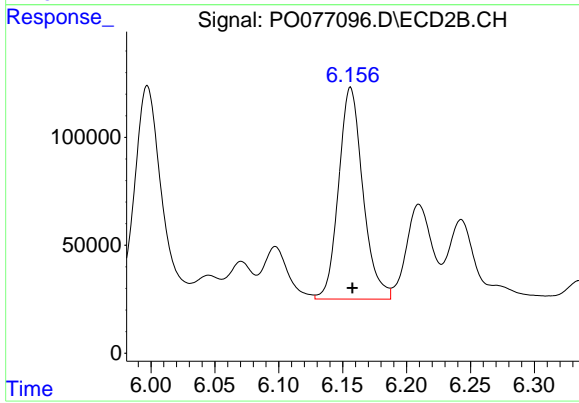
#26 AR-1254-1

R.T.: 5.997 min  
 Delta R.T.: -0.001 min  
 Response: 1438997  
 Conc: 498.51 ng/ml



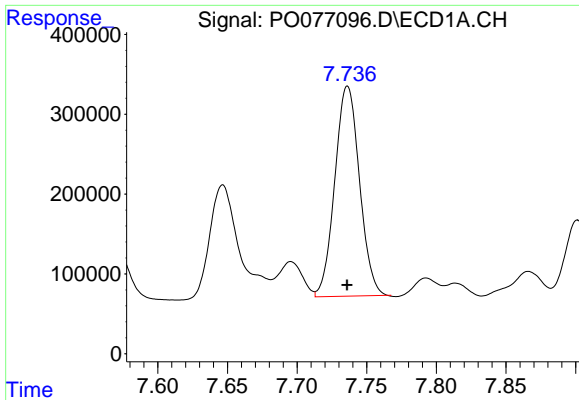
#27 AR-1254-2

R.T.: 7.354 min  
 Delta R.T.: 0.000 min  
 Response: 3279806  
 Conc: 506.75 ng/ml



#27 AR-1254-2

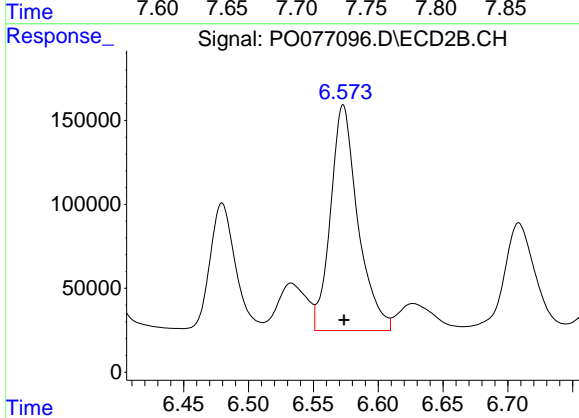
R.T.: 6.156 min  
 Delta R.T.: -0.002 min  
 Response: 1298388  
 Conc: 502.91 ng/ml



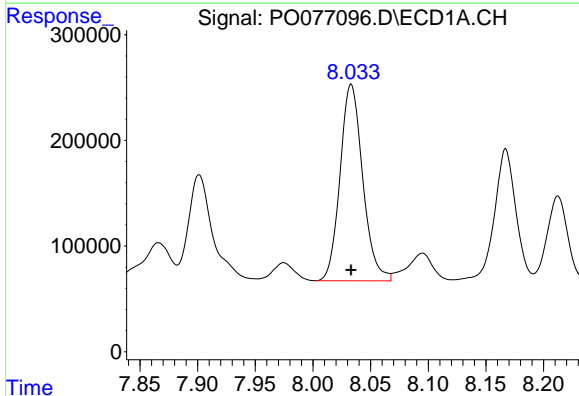
#28 AR-1254-3  
 R.T.: 7.736 min  
 Delta R.T.: 0.000 min  
 Response: 3241438  
 Conc: 479.02 ng/ml m

**Instrument :**  
 ECD\_O  
**ClientSampled :**  
 ICVPO042121AR1254

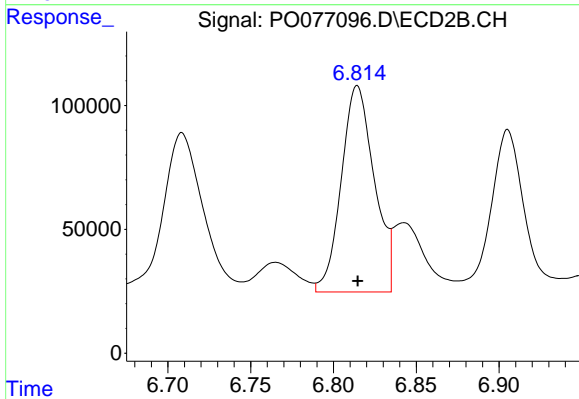
**Manual Integrations**  
**APPROVED**  
 Ankita  
 4/22/2021 9:47:23 AM



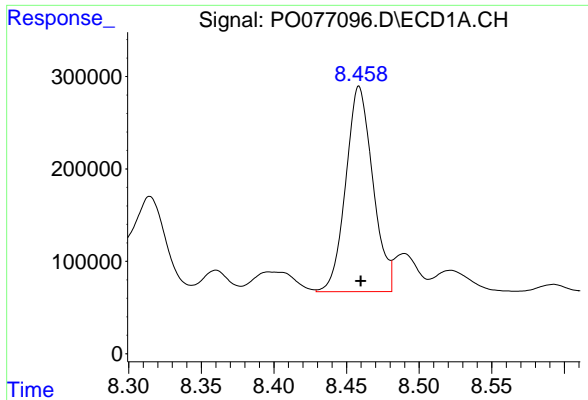
#28 AR-1254-3  
 R.T.: 6.573 min  
 Delta R.T.: 0.000 min  
 Response: 1972468  
 Conc: 504.15 ng/ml



#29 AR-1254-4  
 R.T.: 8.033 min  
 Delta R.T.: 0.000 min  
 Response: 2531254  
 Conc: 514.71 ng/ml



#29 AR-1254-4  
 R.T.: 6.814 min  
 Delta R.T.: 0.000 min  
 Response: 1157357  
 Conc: 509.39 ng/ml

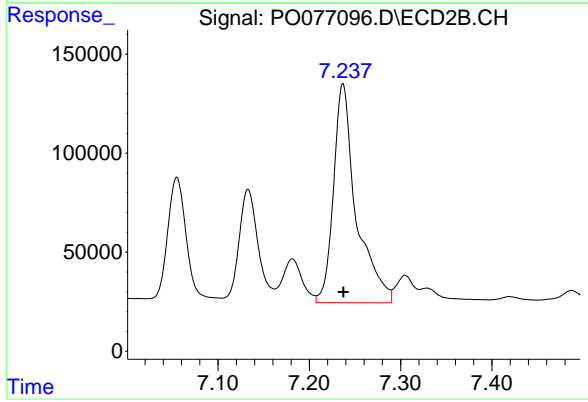


#30 AR-1254-5

R.T.: 8.459 min  
 Delta R.T.: -0.001 min  
 Response: 2878316  
 Conc: 517.04 ng/ml

**Instrument :**  
 ECD\_O  
**ClientSampleId :**  
 ICVPO042121AR1254

**Manual Integrations**  
**APPROVED**  
 Ankita  
 4/22/2021 9:47:23 AM



#30 AR-1254-5

R.T.: 7.237 min  
 Delta R.T.: 0.000 min  
 Response: 1910711  
 Conc: 526.98 ng/ml