

Data Path : Z:\pestpcbsrv\HPCHEM1\ECD\_0\Data\P0042121\  
 Data File : P0077108.D  
 Signal(s) : Signal #1: ECD1A.CH Signal #2: ECD2B.CH  
 Acq On : 21 Apr 2021 11:31  
 Operator : DD\AJ  
 Sample : M2063-07  
 Misc :  
 ALS Vial : 10 Sample Multiplier: 1

Instrument :  
 ECD\_0  
 ClientSampleId :  
 TP2-2-4

Integration File signal 1: autoint1.e  
 Integration File signal 2: autoint2.e  
 Quant Time: Apr 21 12:14:31 2021  
 Quant Method : Z:\pestpcbsrv\HPCHEM1\ECD\_0\methods\P0042121.M  
 Quant Title : GC EXTRACTABLES  
 QLast Update : Wed Apr 21 09:50:22 2021  
 Response via : Initial Calibration  
 Integrator: ChemStation 6890 Scale Mode: Small noise peaks clipped

Volume Inj. : 2 µl  
 Signal #1 Phase : ZB-MR1 Signal #2 Phase: ZB-MR2  
 Signal #1 Info : 30Mx0.32mmx 0.50µ Signal #2 Info : 30M x 0.32mm x 0.25µm

Compound	RT#1	RT#2	Resp#1	Resp#2	ng/ml	ng/ml
-----						
System Monitoring Compounds						
1) SA Tetrachlo...	4.895	3.891	2325558	1165692	22.005	22.157
2) SA Decachlor...	10.864	9.131	2125612	751715	20.473	19.922

Target Compounds

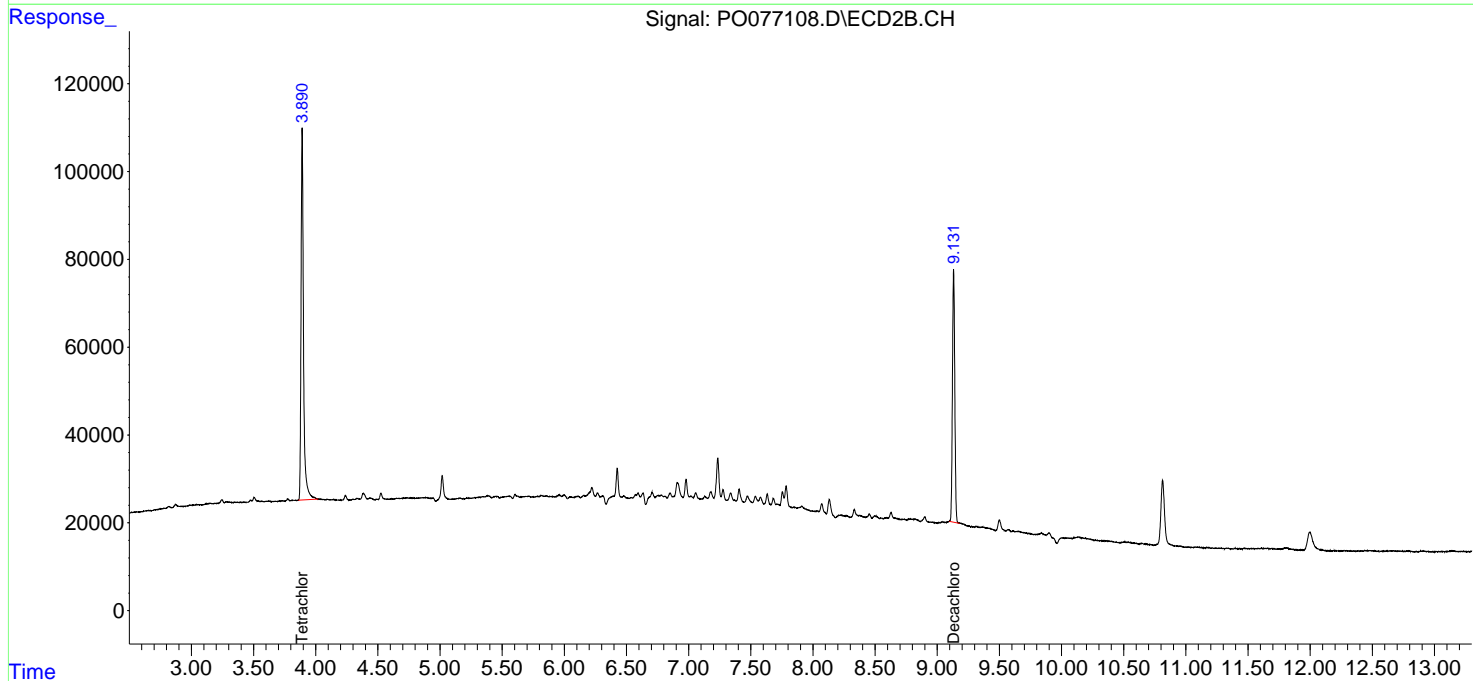
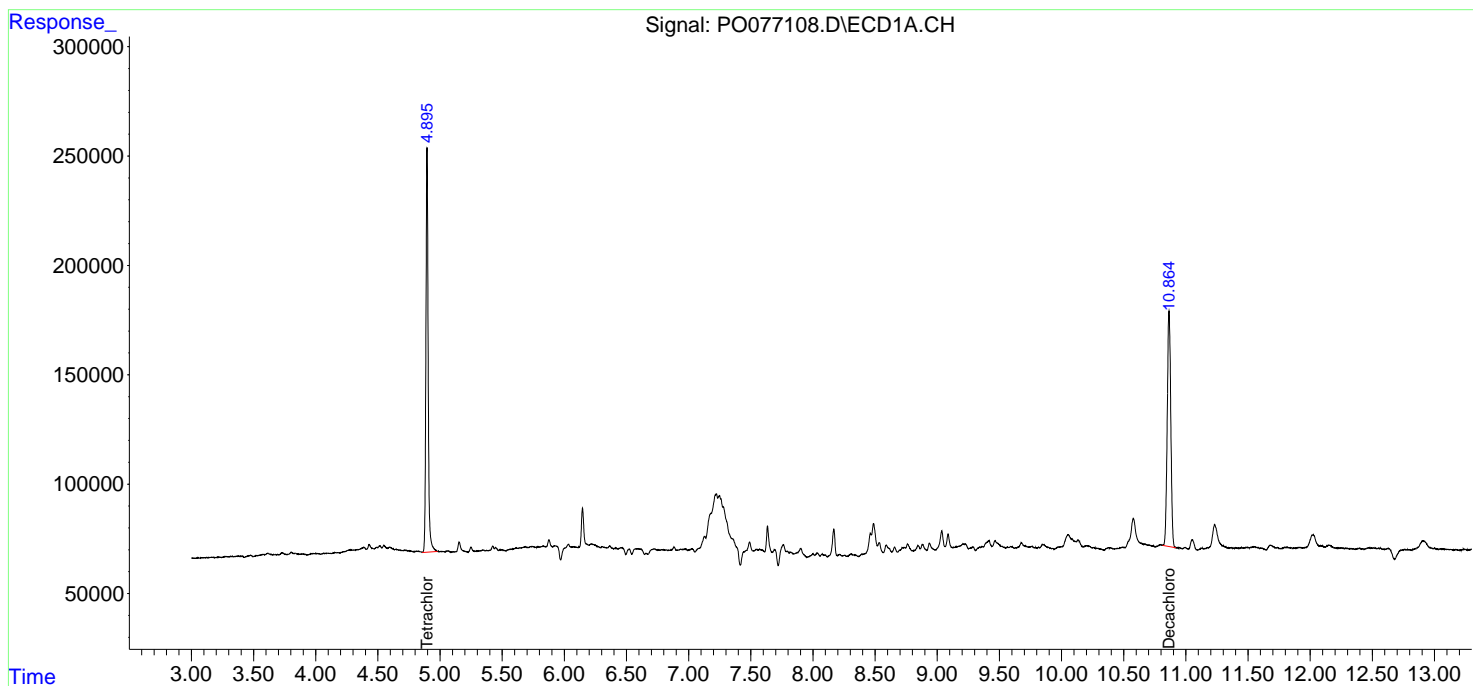
(f)=RT Delta > 1/2 Window (#)=Amounts differ by > 25% (m)=manual int.

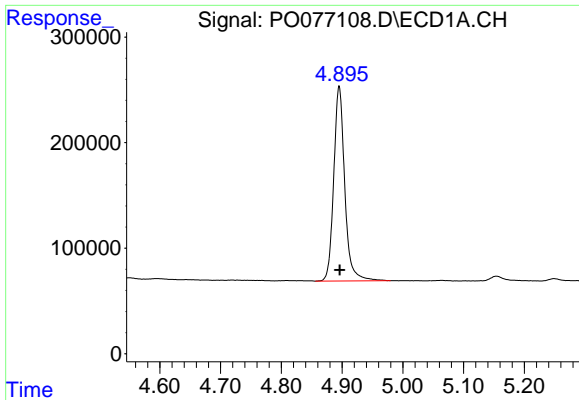
Data Path : Z:\pestpcbsrv\HPCHEM1\ECD\_0\Data\P0042121\  
 Data File : P0077108.D  
 Signal(s) : Signal #1: ECD1A.CH Signal #2: ECD2B.CH  
 Acq On : 21 Apr 2021 11:31  
 Operator : DD\AJ  
 Sample : M2063-07  
 Misc :  
 ALS Vial : 10 Sample Multiplier: 1

Instrument :  
 ECD\_O  
 ClientSampleId :  
 TP2-2-4

Integration File signal 1: autoint1.e  
 Integration File signal 2: autoint2.e  
 Quant Time: Apr 21 12:14:31 2021  
 Quant Method : Z:\pestpcbsrv\HPCHEM1\ECD\_0\methods\P0042121.M  
 Quant Title : GC EXTRACTABLES  
 QLast Update : Wed Apr 21 09:50:22 2021  
 Response via : Initial Calibration  
 Integrator: ChemStation 6890 Scale Mode: Small noise peaks clipped

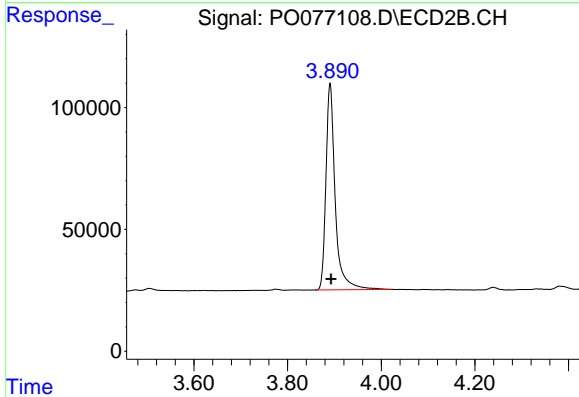
Volume Inj. : 2 µl  
 Signal #1 Phase : ZB-MR1 Signal #2 Phase: ZB-MR2  
 Signal #1 Info : 30Mx0.32mmx 0.50µ Signal #2 Info : 30M x 0.32mm x 0.25µm



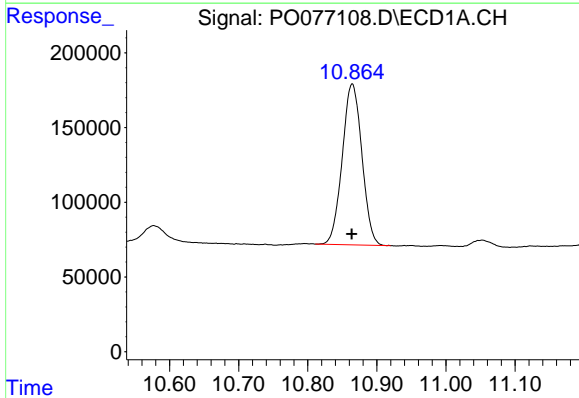


#1 Tetrachloro-m-xylene  
 R.T.: 4.895 min  
 Delta R.T.: 0.000 min  
 Response: 2325558  
 Conc: 22.01 ng/ml

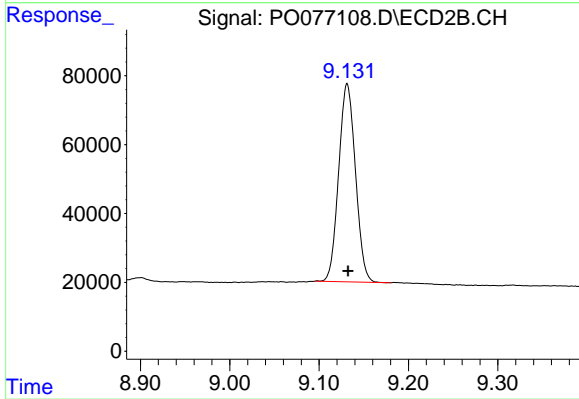
Instrument :  
 ECD\_O  
 ClientSampled :  
 TP2-2-4



#1 Tetrachloro-m-xylene  
 R.T.: 3.891 min  
 Delta R.T.: -0.002 min  
 Response: 1165692  
 Conc: 22.16 ng/ml



#2 Decachlorobiphenyl  
 R.T.: 10.864 min  
 Delta R.T.: 0.000 min  
 Response: 2125612  
 Conc: 20.47 ng/ml



#2 Decachlorobiphenyl  
 R.T.: 9.131 min  
 Delta R.T.: 0.000 min  
 Response: 751715  
 Conc: 19.92 ng/ml