

Data Path : Z:\pestpcbsrv\HPCHEM1\ECD\_0\Data\P0042121\  
 Data File : P0077109.D  
 Signal(s) : Signal #1: ECD1A.CH Signal #2: ECD2B.CH  
 Acq On : 21 Apr 2021 11:48  
 Operator : DD\AJ  
 Sample : M2063-09  
 Misc :  
 ALS Vial : 11 Sample Multiplier: 1

**Instrument :**  
 ECD\_0  
**ClientSampled :**  
 TP3-0-2

**Manual Integrations**  
**APPROVED**  
 Ankita  
 4/22/2021 9:47:32 AM

Integration File signal 1: autoint1.e  
 Integration File signal 2: autoint2.e  
 Quant Time: Apr 21 13:05:55 2021  
 Quant Method : Z:\pestpcbsrv\HPCHEM1\ECD\_0\methods\P0042121.M  
 Quant Title : GC EXTRACTABLES  
 QLast Update : Wed Apr 21 09:50:22 2021  
 Response via : Initial Calibration  
 Integrator: ChemStation 6890 Scale Mode: Small noise peaks clipped

Volume Inj. : 2 µl  
 Signal #1 Phase : ZB-MR1 Signal #2 Phase: ZB-MR2  
 Signal #1 Info : 30Mx0.32mmx 0.50µ Signal #2 Info : 30M x 0.32mm x 0.25µm

Compound	RT#1	RT#2	Resp#1	Resp#2	ng/ml	ng/ml
-----						
System Monitoring Compounds						
1) SA Tetrachlo...	4.895	3.891	2443500	1232334	23.121	23.423
2) SA Decachlor...	10.863	9.132	2343923	810585	22.576	21.482
Target Compounds						
26) L6 AR-1254-1	7.126	5.998	140279	67635	34.113m	23.431 #
27) L6 AR-1254-2	7.354	6.156	178754	62572	27.619m	24.236
28) L6 AR-1254-3	7.738	6.572	144381	94611	21.336	24.182m
29) L6 AR-1254-4	8.034	6.812	112501	49919	22.876	21.971m
30) L6 AR-1254-5	8.463	7.227	339929	228524	61.062	63.027
-----						

(f)=RT Delta > 1/2 Window (#)=Amounts differ by > 25% (m)=manual int.

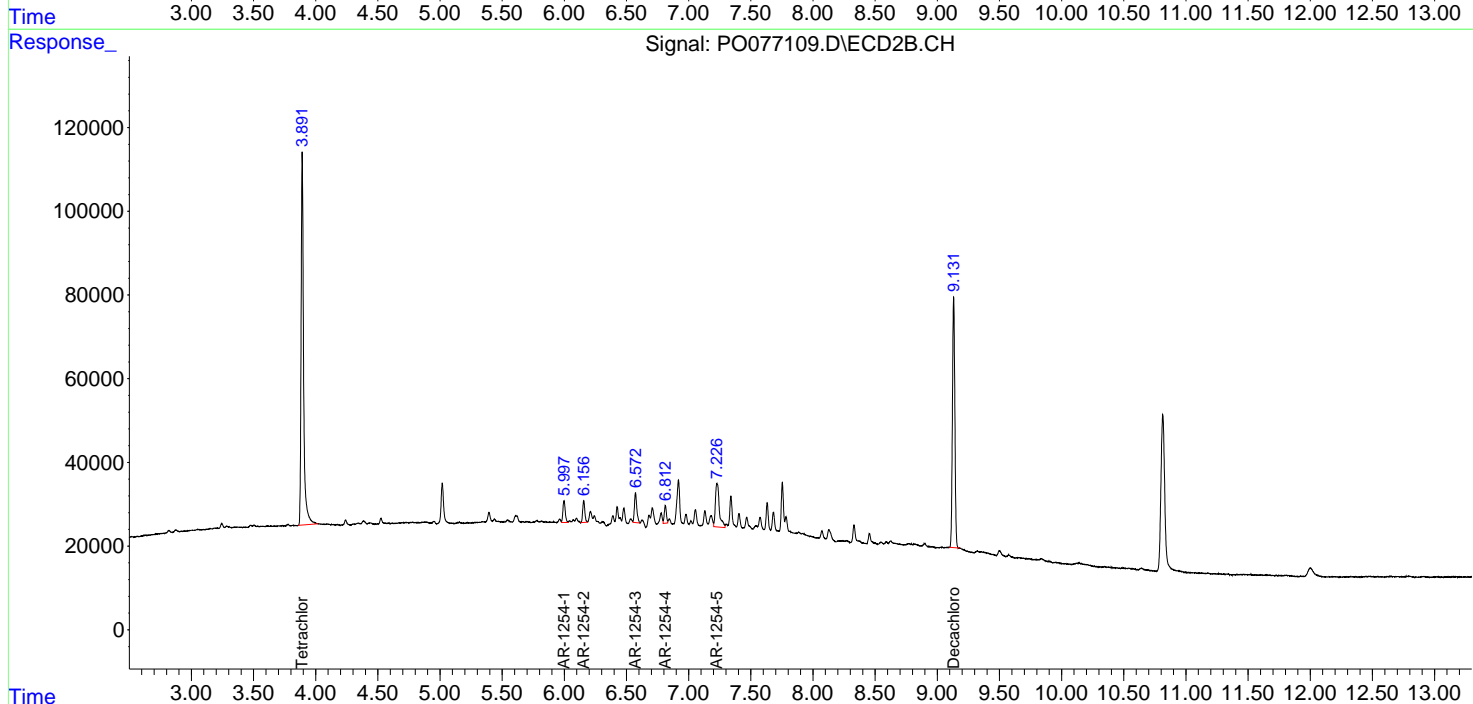
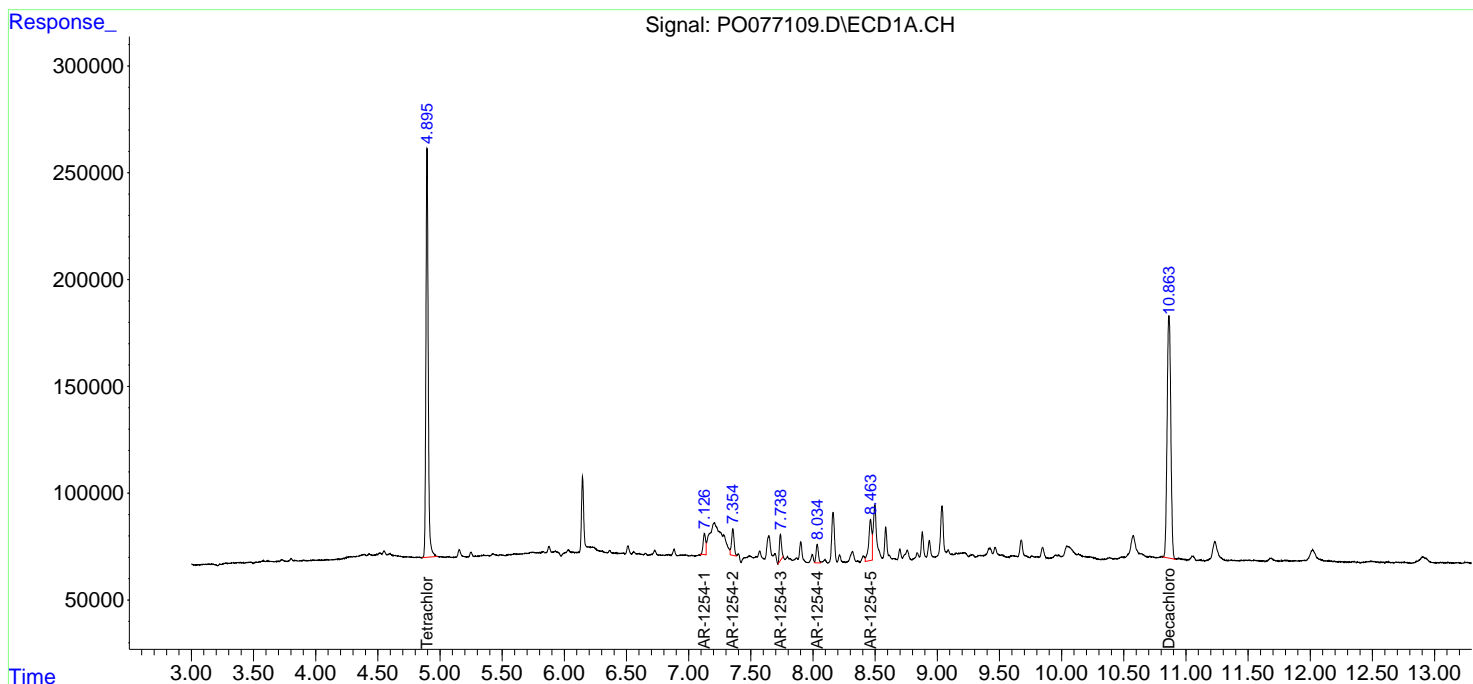
Data Path : Z:\pestpcbsrv\HPCHEM1\ECD\_0\Data\P0042121\  
 Data File : P0077109.D  
 Signal(s) : Signal #1: ECD1A.CH Signal #2: ECD2B.CH  
 Acq On : 21 Apr 2021 11:48  
 Operator : DD\AJ  
 Sample : M2063-09  
 Misc :  
 ALS Vial : 11 Sample Multiplier: 1

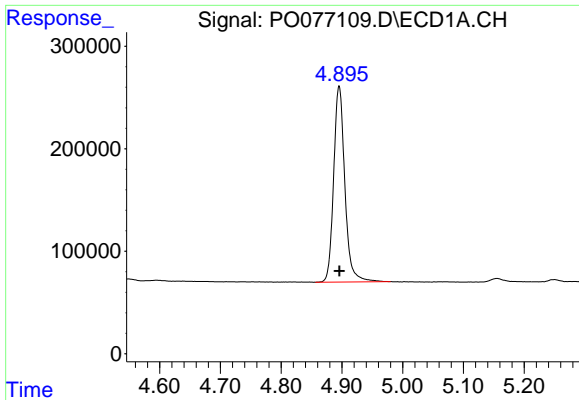
**Instrument :**  
 ECD\_O  
**Client Sampled :**  
 TP3-0-2

**Manual Integrations**  
**APPROVED**  
 Ankita  
 4/22/2021 9:47:32 AM

Integration File signal 1: autoint1.e  
 Integration File signal 2: autoint2.e  
 Quant Time: Apr 21 13:05:55 2021  
 Quant Method : Z:\pestpcbsrv\HPCHEM1\ECD\_0\methods\P0042121.M  
 Quant Title : GC EXTRACTABLES  
 QLast Update : Wed Apr 21 09:50:22 2021  
 Response via : Initial Calibration  
 Integrator: ChemStation 6890 Scale Mode: Small noise peaks clipped

Volume Inj. : 2 µl  
 Signal #1 Phase : ZB-MR1 Signal #2 Phase: ZB-MR2  
 Signal #1 Info : 30Mx0.32mmx 0.50µ Signal #2 Info : 30M x 0.32mm x 0.25µm

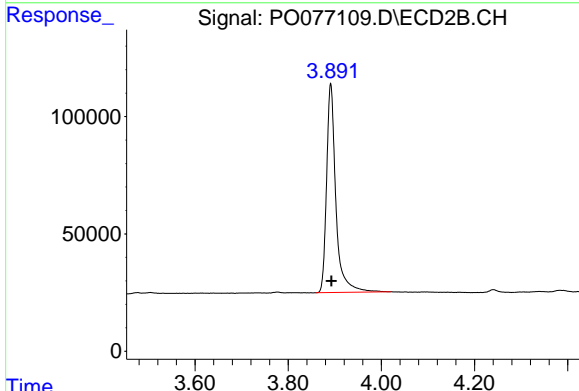




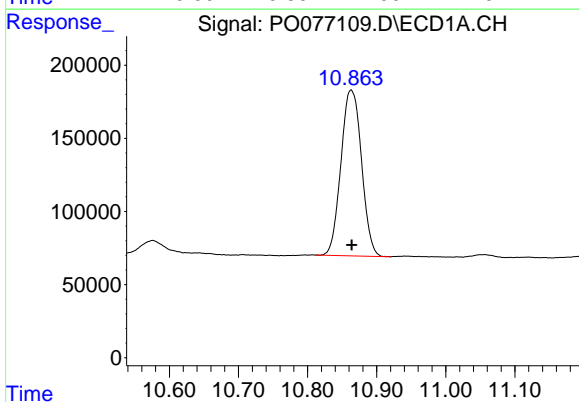
#1 Tetrachloro-m-xylene  
 R.T.: 4.895 min  
 Delta R.T.: 0.000 min  
 Response: 2443500  
 Conc: 23.12 ng/ml

Instrument :  
 ECD\_O  
 ClientSampled :  
 TP3-0-2

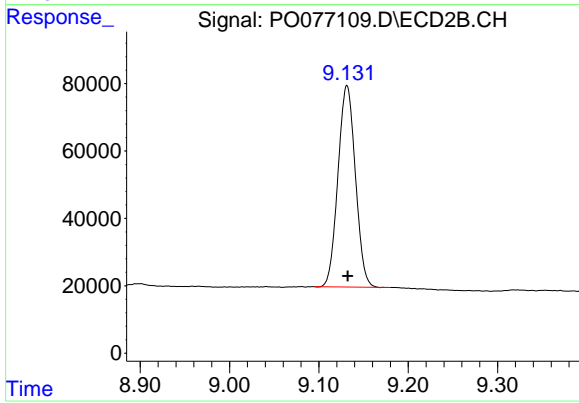
Manual Integrations  
 APPROVED  
 Ankita  
 4/22/2021 9:47:32 AM



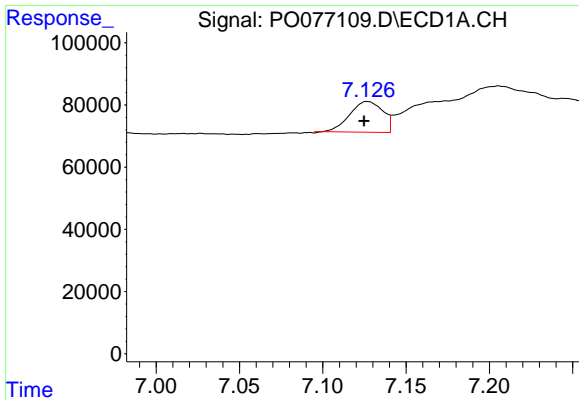
#1 Tetrachloro-m-xylene  
 R.T.: 3.891 min  
 Delta R.T.: -0.001 min  
 Response: 1232334  
 Conc: 23.42 ng/ml



#2 Decachlorobiphenyl  
 R.T.: 10.863 min  
 Delta R.T.: 0.000 min  
 Response: 2343923  
 Conc: 22.58 ng/ml



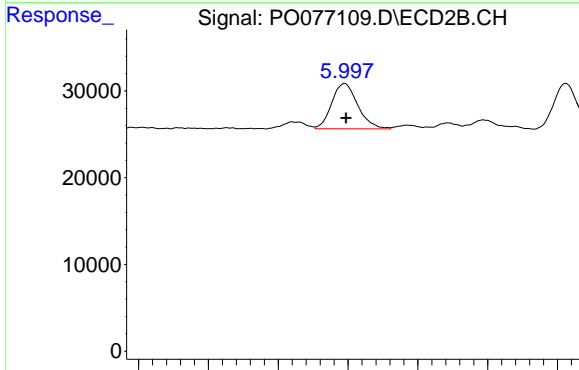
#2 Decachlorobiphenyl  
 R.T.: 9.132 min  
 Delta R.T.: 0.000 min  
 Response: 810585  
 Conc: 21.48 ng/ml



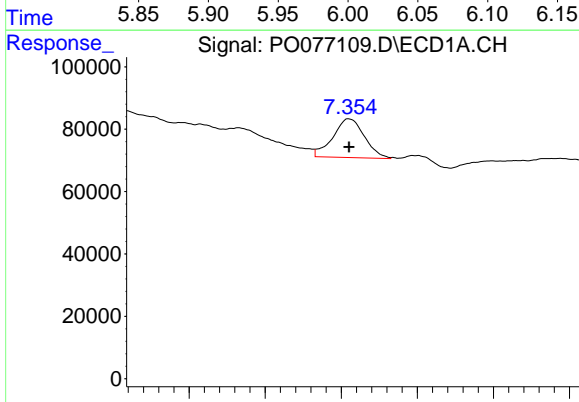
#26 AR-1254-1  
 R.T.: 7.126 min  
 Delta R.T.: 0.000 min  
 Response: 140279  
 Conc: 34.11 ng/ml m

**Instrument :**  
 ECD\_O  
**ClientSampled :**  
 TP3-0-2

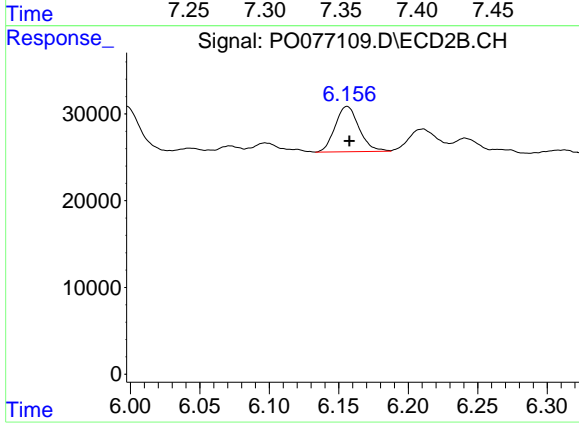
**Manual Integrations**  
**APPROVED**  
 Ankita  
 4/22/2021 9:47:32 AM



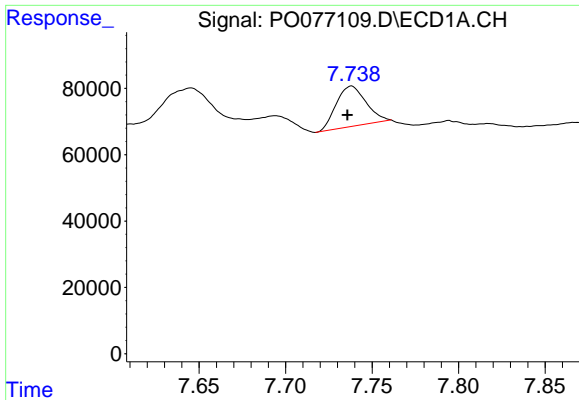
#26 AR-1254-1  
 R.T.: 5.998 min  
 Delta R.T.: 0.000 min  
 Response: 67635  
 Conc: 23.43 ng/ml



#27 AR-1254-2  
 R.T.: 7.354 min  
 Delta R.T.: 0.000 min  
 Response: 178754  
 Conc: 27.62 ng/ml m



#27 AR-1254-2  
 R.T.: 6.156 min  
 Delta R.T.: -0.002 min  
 Response: 62572  
 Conc: 24.24 ng/ml

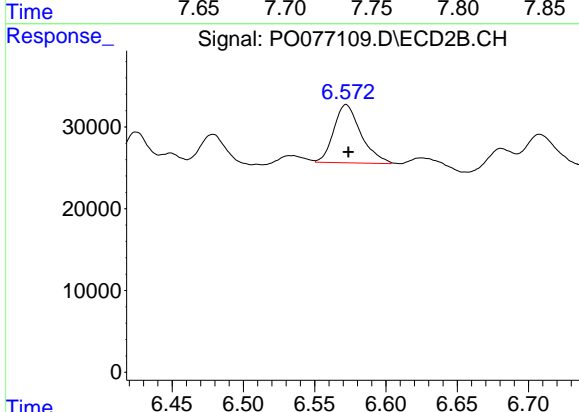


#28 AR-1254-3

R.T.: 7.738 min  
 Delta R.T.: 0.002 min  
 Response: 144381  
 Conc: 21.34 ng/ml

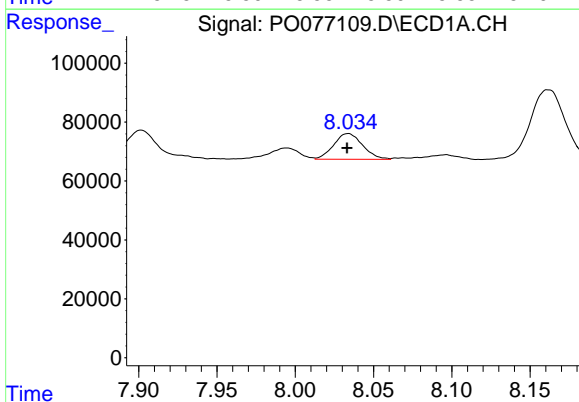
**Instrument :**  
 ECD\_O  
**ClientSampled :**  
 TP3-0-2

**Manual Integrations**  
**APPROVED**  
 Ankita  
 4/22/2021 9:47:32 AM



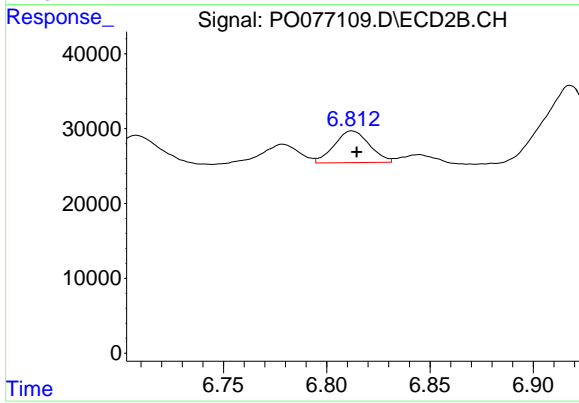
#28 AR-1254-3

R.T.: 6.572 min  
 Delta R.T.: -0.002 min  
 Response: 94611  
 Conc: 24.18 ng/ml m



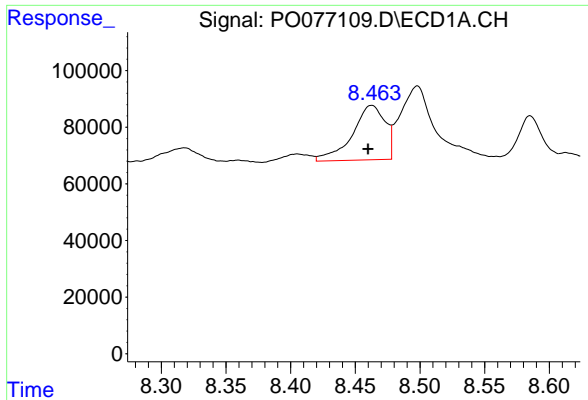
#29 AR-1254-4

R.T.: 8.034 min  
 Delta R.T.: 0.000 min  
 Response: 112501  
 Conc: 22.88 ng/ml



#29 AR-1254-4

R.T.: 6.812 min  
 Delta R.T.: -0.003 min  
 Response: 49919  
 Conc: 21.97 ng/ml m



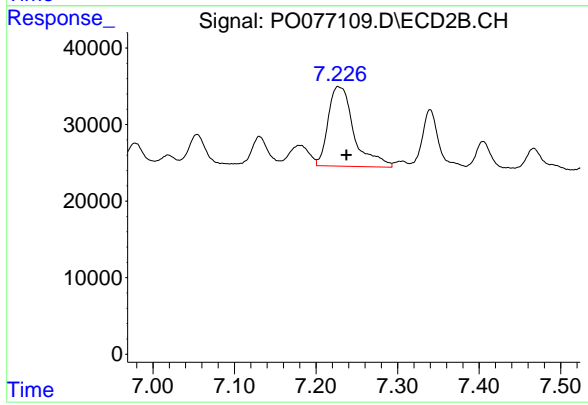
#30 AR-1254-5

R.T.: 8.463 min  
Delta R.T.: 0.003 min  
Response: 339929  
Conc: 61.06 ng/ml

Instrument :  
ECD\_O  
ClientSampled :  
TP3-0-2

Manual Integrations  
APPROVED

Ankita  
4/22/2021 9:47:32 AM



#30 AR-1254-5

R.T.: 7.227 min  
Delta R.T.: -0.011 min  
Response: 228524  
Conc: 63.03 ng/ml