

Data Path : Z:\pestpcbsrv\HPCHEM1\ECD\_0\Data\P0042225\  
 Data File : PO110609.D  
 Signal(s) : Signal #1: ECD1A.ch Signal #2: ECD2B.ch  
 Acq On : 22 Apr 2025 18:20  
 Operator : YP/AJ  
 Sample : Q1848-01  
 Misc :  
 ALS Vial : 19 Sample Multiplier: 1

Instrument :  
 ECD\_0  
 ClientSampleId :  
 RBR200027

Integration File signal 1: autoint1.e  
 Integration File signal 2: autoint2.e  
 Quant Time: Apr 23 07:00:05 2025  
 Quant Method : Z:\pestpcbsrv\HPCHEM1\ECD\_0\methods\P0041025.M  
 Quant Title : GC EXTRACTABLES  
 QLast Update : Fri Apr 11 02:12:41 2025  
 Response via : Initial Calibration  
 Integrator: ChemStation

Volume Inj. : 2 µl  
 Signal #1 Phase : ZB-MR1 Signal #2 Phase: ZB-MR2  
 Signal #1 Info : 30Mx0.32mmx 0.50µ Signal #2 Info : 30M x 0.32mm x 0.25µm

Compound	RT#1	RT#2	Resp#1	Resp#2	ng/ml	ng/ml
System Monitoring Compounds						
1) SA Tetrachlo...	3.684	3.683	174.1E6	96316019	19.895	19.303
Target Compounds						
3) L1 AR-1016-1	4.776	4.764	20238601	10842852	61.676	61.779
4) L1 AR-1016-2	4.793	4.782	28099178	16384168	61.763	65.155
5) L1 AR-1016-3	4.850	4.961	6217803	9033532	19.278	66.565 #
6) L1 AR-1016-4	4.974	5.000	18345065	40427397	73.626	353.486 #
7) L1 AR-1016-5	5.228	5.212	66708558	33784008	247.976	226.626
8) L2 AR-1221-1	3.885	3.882	22553540	11363841	191.076	170.188
9) L2 AR-1221-2	3.986	3.982	6109614	1960123	69.157	39.127 #
10) L2 AR-1221-3	4.059	4.054	10535205	4204530	40.039	28.186 #
11) L3 AR-1232-1	4.059	4.054	10535205	4204530	51.436	36.554 #
12) L3 AR-1232-2	4.549	4.782	9262482	16384168	86.802	147.781 #
13) L3 AR-1232-3	4.793	4.961	28099178	9033532	140.650	157.920
14) L3 AR-1232-4	4.974	5.042	18345065	32958433	179.329	610.869 #
15) L3 AR-1232-5	5.014	5.212	74812562	33784008	1085.776	591.292 #
16) L4 AR-1242-1	4.776	4.764	20238601	10842852	72.923	72.526
17) L4 AR-1242-2	4.793	4.782	28099178	16384168	72.839	76.790
18) L4 AR-1242-3	4.850	4.961	6217803	9033532	22.350	78.157 #
19) L4 AR-1242-4	4.974	5.042	18345065	32958433	86.792	274.427 #
20) L4 AR-1242-5	5.624	5.564	112.0E6	113.8E6	494.853	784.532 #
21) L5 AR-1248-1	4.776	4.764	20238601	10842852	95.090	94.178
22) L5 AR-1248-2	5.014	5.000	74812562	40427397	252.809	248.200
23) L5 AR-1248-3	5.228	5.042	66708558	32958433	180.312	187.417
24) L5 AR-1248-4	5.583	5.212	211.0E6	33784008	405.752	165.869 #
25) L5 AR-1248-5	5.624	5.605	112.0E6	60435947	303.258	306.166
26) L6 AR-1254-1	5.583	5.564	211.0E6	113.8E6	378.150	377.557
27) L6 AR-1254-2	5.732	5.712	136.8E6	73981311	281.689	279.507
28) L6 AR-1254-3	6.137	6.113	291.3E6	159.7E6	371.925	395.952
29) L6 AR-1254-4	6.367	6.341	157.1E6	79952265	322.128	348.053
30) L6 AR-1254-5	6.786	6.758	354.6E6	179.8E6	505.909	541.077
31) L7 AR-1260-1	6.269	6.244	162.7E6	86737668	344.324	352.644
32) L7 AR-1260-2	6.458	6.432	132.6E6	61743458	226.184	211.631
33) L7 AR-1260-3	6.856	6.583	18773505	56608829	38.090	208.978 #
34) L7 AR-1260-4	7.085	7.056	40010658	15588928	94.271	77.696
35) L7 AR-1260-5	7.327	7.296	98322781	47349346	94.227	103.190
36) L8 AR-1262-1	6.856	6.828	18773505	9505800	26.764	28.863
37) L8 AR-1262-2	7.327	7.296	98322781	47349346	81.411	93.124
38) L8 AR-1262-3	7.612	7.579	25987030	9358208	51.045	48.330
39) L8 AR-1262-4	7.674	7.642	75904762	32449510	84.689	93.500
40) L8 AR-1262-5	8.171	8.134	15409609	1120920	38.238	8.997 #
41) L9 AR-1268-1	7.612	7.579	25987030	9358208	18.507	17.085
42) L9 AR-1268-2	7.674	7.642	75904762	32449510	59.312	65.227

Data Path : Z:\pestpcbsrv\HPCHEM1\ECD\_0\Data\P0042225\  
 Data File : P0110609.D  
 Signal(s) : Signal #1: ECD1A.ch Signal #2: ECD2B.ch  
 Acq On : 22 Apr 2025 18:20  
 Operator : YP/AJ  
 Sample : Q1848-01  
 Misc :  
 ALS Vial : 19 Sample Multiplier: 1

Instrument :  
 ECD\_0  
 ClientSampleId :  
 RBR200027

Integration File signal 1: autoint1.e  
 Integration File signal 2: autoint2.e  
 Quant Time: Apr 23 07:00:05 2025  
 Quant Method : Z:\pestpcbsrv\HPCHEM1\ECD\_0\methods\P0041025.M  
 Quant Title : GC EXTRACTABLES  
 QLast Update : Fri Apr 11 02:12:41 2025  
 Response via : Initial Calibration  
 Integrator: ChemStation

Volume Inj. : 2 µl  
 Signal #1 Phase : ZB-MR1 Signal #2 Phase: ZB-MR2  
 Signal #1 Info : 30Mx0.32mmx 0.50µ Signal #2 Info : 30M x 0.32mm x 0.25µm

	Compound	RT#1	RT#2	Resp#1	Resp#2	ng/ml	ng/ml
43)	L9 AR-1268-3	7.878	7.845	3046131	4024060	2.921	10.830 #
44)	L9 AR-1268-4	8.171	8.134	15409609	1120920	34.694	7.942 #
45)	L9 AR-1268-5	8.469	8.427	14145836	2041816	4.393	2.594 #

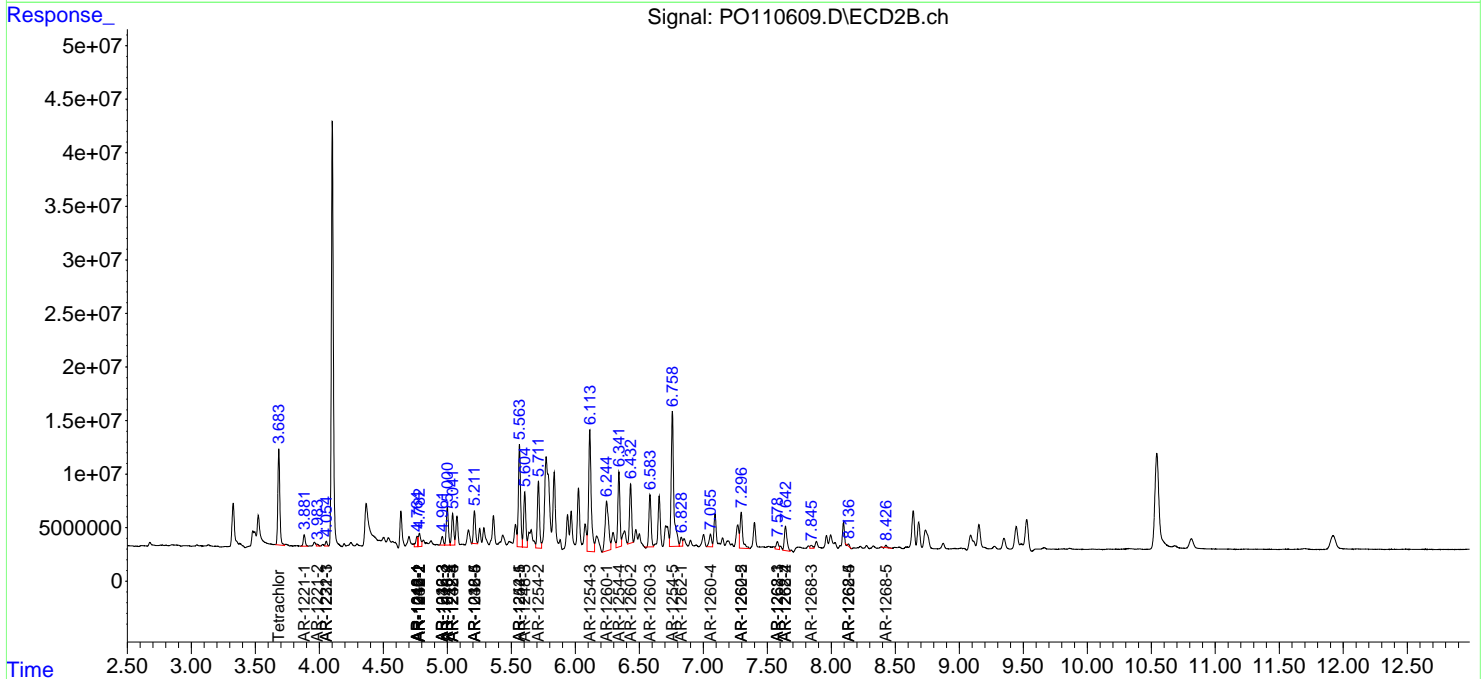
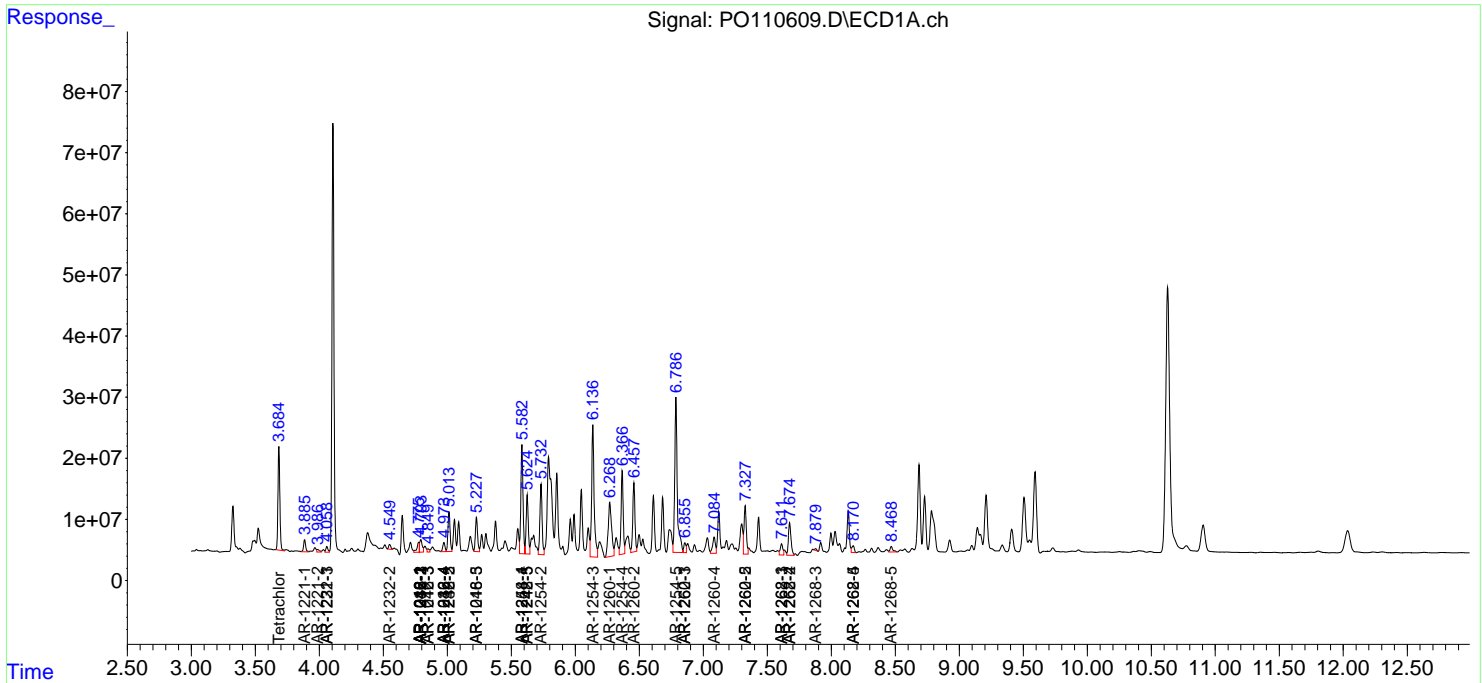
(f)=RT Delta > 1/2 Window (#)=Amounts differ by > 25% (m)=manual int.

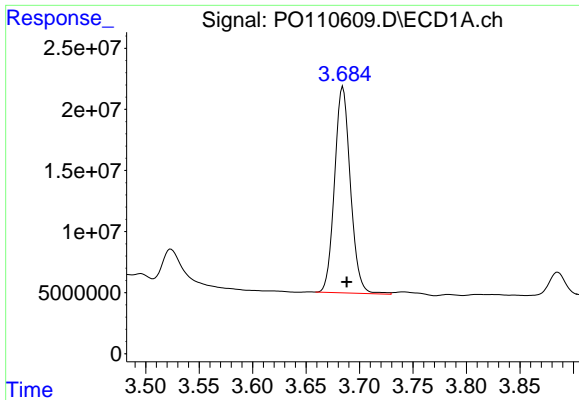
Data Path : Z:\pestpcbsrv\HPCHEM1\ECD\_O\Data\PO042225\  
 Data File : PO110609.D  
 Signal(s) : Signal #1: ECD1A.ch Signal #2: ECD2B.ch  
 Acq On : 22 Apr 2025 18:20  
 Operator : YP/AJ  
 Sample : Q1848-01  
 Misc :  
 ALS Vial : 19 Sample Multiplier: 1

Instrument :  
 ECD\_O  
 ClientSampleId :  
 RBR200027

Integration File signal 1: autoint1.e  
 Integration File signal 2: autoint2.e  
 Quant Time: Apr 23 07:00:05 2025  
 Quant Method : Z:\pestpcbsrv\HPCHEM1\ECD\_O\methods\PO041025.M  
 Quant Title : GC EXTRACTABLES  
 QLast Update : Fri Apr 11 02:12:41 2025  
 Response via : Initial Calibration  
 Integrator: ChemStation

Volume Inj. : 2 µl  
 Signal #1 Phase : ZB-MR1 Signal #2 Phase: ZB-MR2  
 Signal #1 Info : 30Mx0.32mmx 0.50µ Signal #2 Info : 30M x 0.32mm x 0.25µm

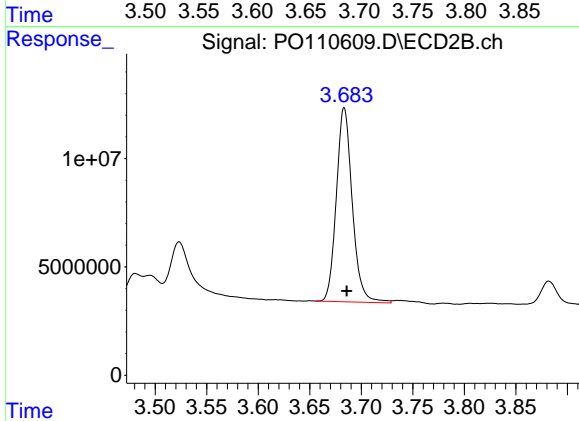




#1 Tetrachloro-m-xylene

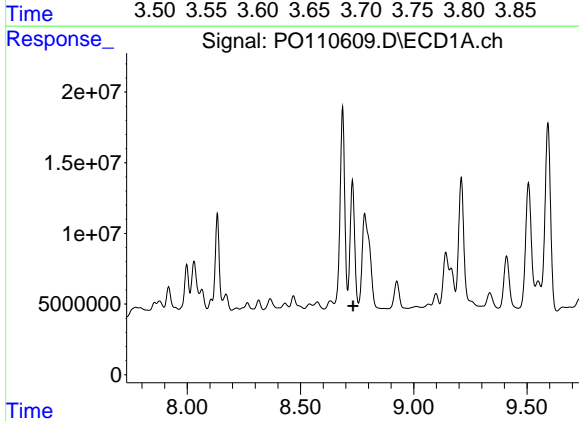
R.T.: 3.684 min  
Delta R.T.: -0.004 min  
Response: 174063285  
Conc: 19.90 ng/ml

Instrument :  
ECD\_O  
ClientSampleId :  
RBR200027



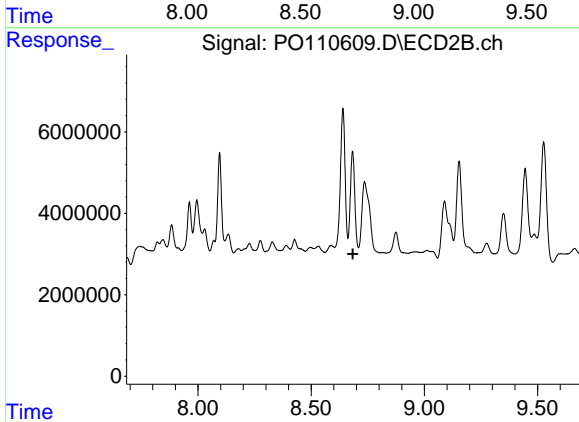
#1 Tetrachloro-m-xylene

R.T.: 3.683 min  
Delta R.T.: -0.002 min  
Response: 96316019  
Conc: 19.30 ng/ml



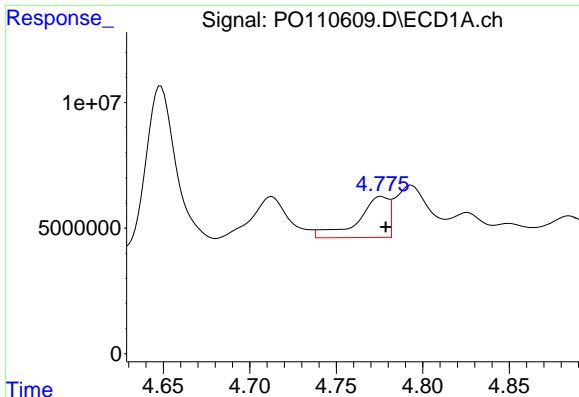
#2 Decachlorobiphenyl

R.T.: 8.729 min  
Delta R.T.: -0.002 min  
Response: -12526136  
Conc: N.D.



#2 Decachlorobiphenyl

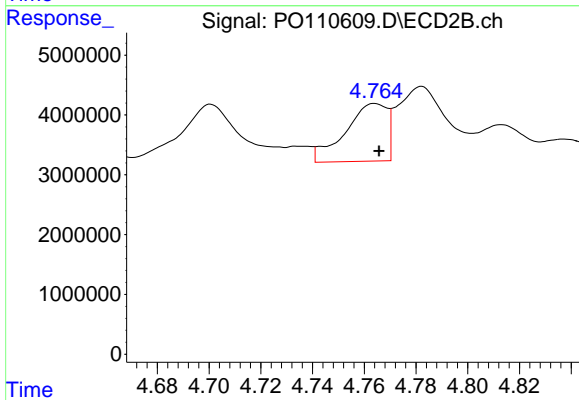
R.T.: 8.683 min  
Delta R.T.: -0.001 min  
Response: -2812836  
Conc: N.D.



#3 AR-1016-1

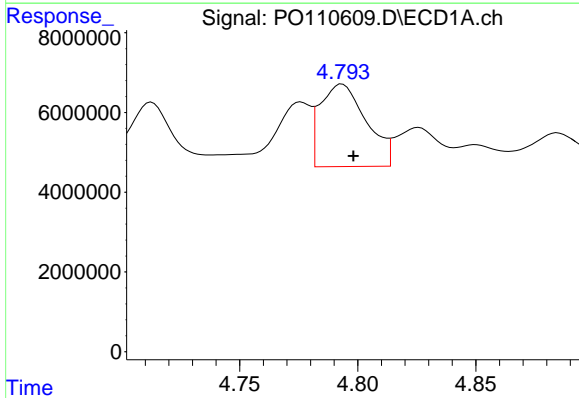
R.T.: 4.776 min  
 Delta R.T.: -0.003 min  
 Response: 20238601  
 Conc: 61.68 ng/ml

Instrument :  
 ECD\_O  
 ClientSampleId :  
 RBR200027



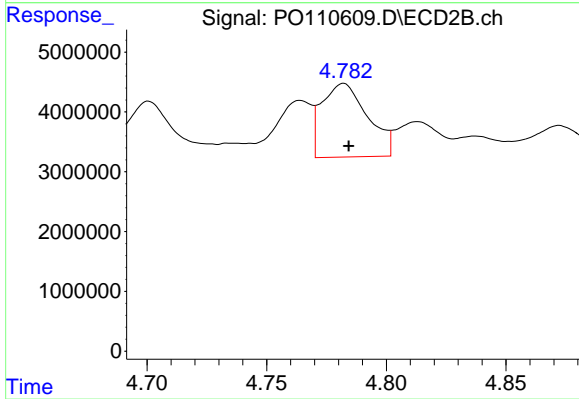
#3 AR-1016-1

R.T.: 4.764 min  
 Delta R.T.: -0.002 min  
 Response: 10842852  
 Conc: 61.78 ng/ml



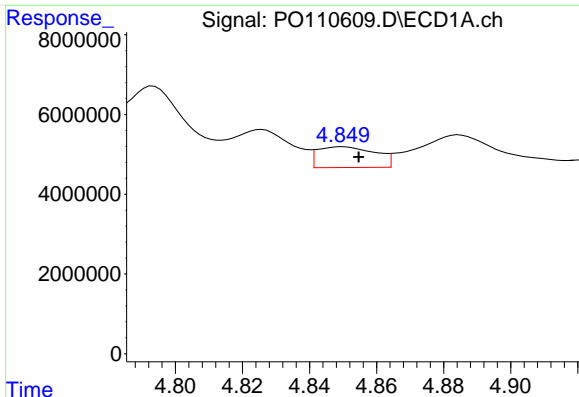
#4 AR-1016-2

R.T.: 4.793 min  
 Delta R.T.: -0.005 min  
 Response: 28099178  
 Conc: 61.76 ng/ml



#4 AR-1016-2

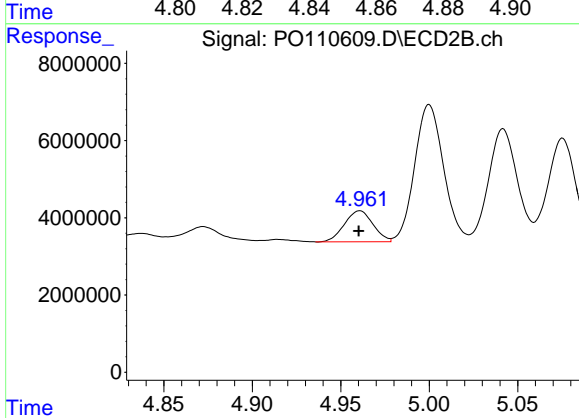
R.T.: 4.782 min  
 Delta R.T.: -0.002 min  
 Response: 16384168  
 Conc: 65.15 ng/ml



#5 AR-1016-3

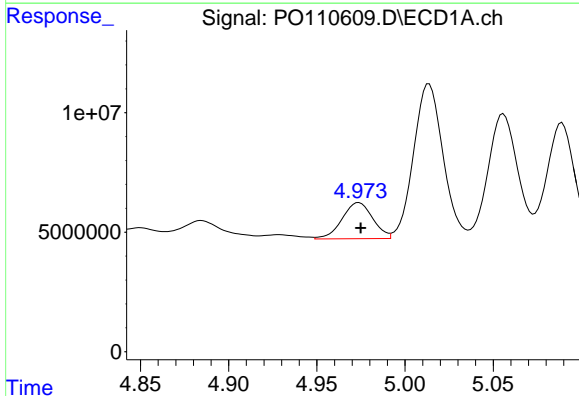
R.T.: 4.850 min  
 Delta R.T.: -0.005 min  
 Response: 6217803  
 Conc: 19.28 ng/ml

Instrument :  
 ECD\_O  
 ClientSampleId :  
 RBR200027



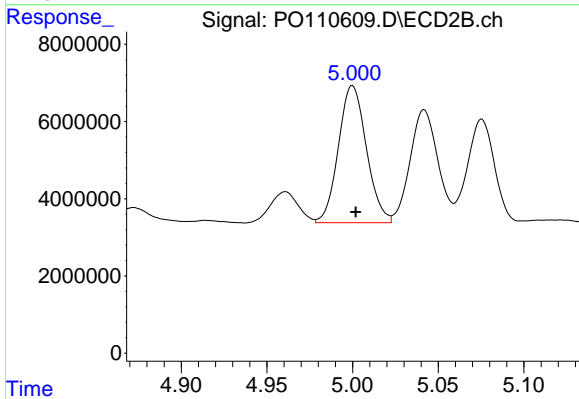
#5 AR-1016-3

R.T.: 4.961 min  
 Delta R.T.: 0.000 min  
 Response: 9033532  
 Conc: 66.56 ng/ml



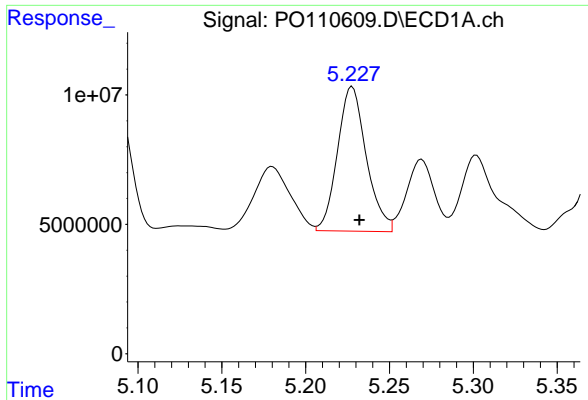
#6 AR-1016-4

R.T.: 4.974 min  
 Delta R.T.: -0.001 min  
 Response: 18345065  
 Conc: 73.63 ng/ml



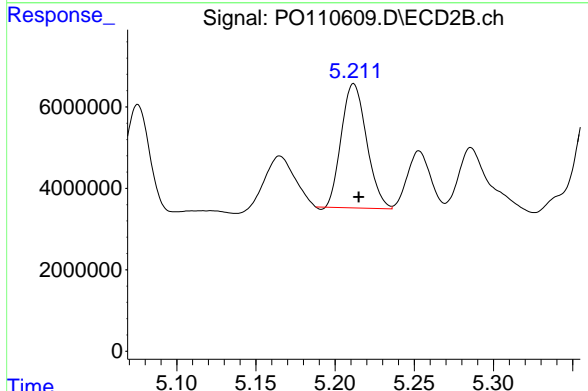
#6 AR-1016-4

R.T.: 5.000 min  
 Delta R.T.: -0.002 min  
 Response: 40427397  
 Conc: 353.49 ng/ml

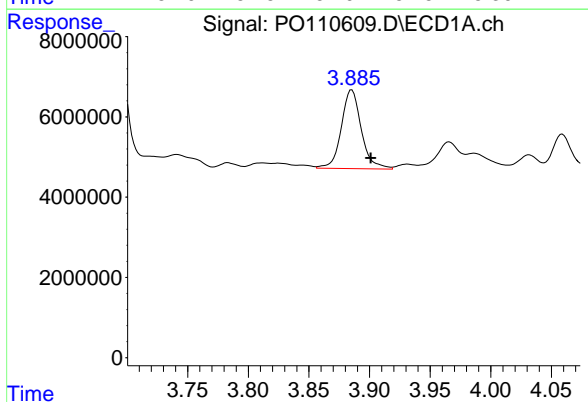


#7 AR-1016-5  
 R.T.: 5.228 min  
 Delta R.T.: -0.004 min  
 Response: 66708558  
 Conc: 247.98 ng/ml

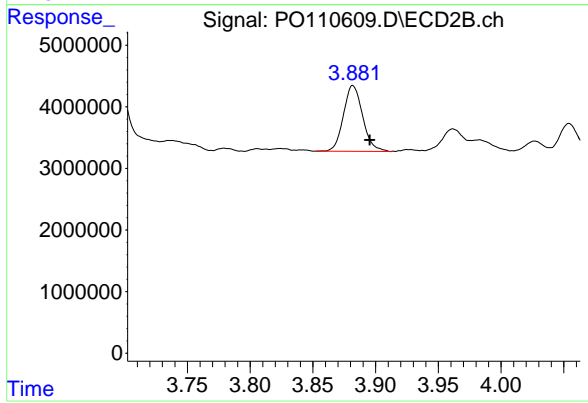
Instrument :  
 ECD\_O  
 ClientSampleId :  
 RBR200027



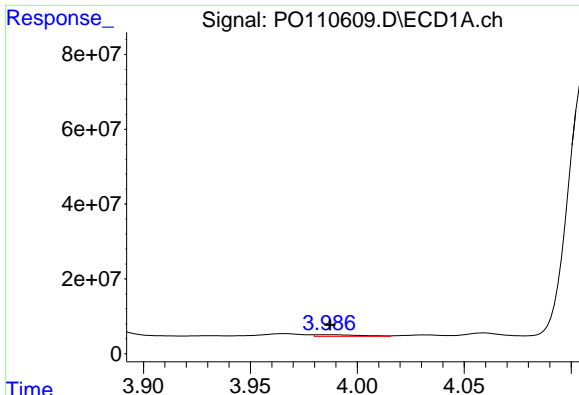
#7 AR-1016-5  
 R.T.: 5.212 min  
 Delta R.T.: -0.003 min  
 Response: 33784008  
 Conc: 226.63 ng/ml



#8 AR-1221-1  
 R.T.: 3.885 min  
 Delta R.T.: -0.016 min  
 Response: 22553540  
 Conc: 191.08 ng/ml



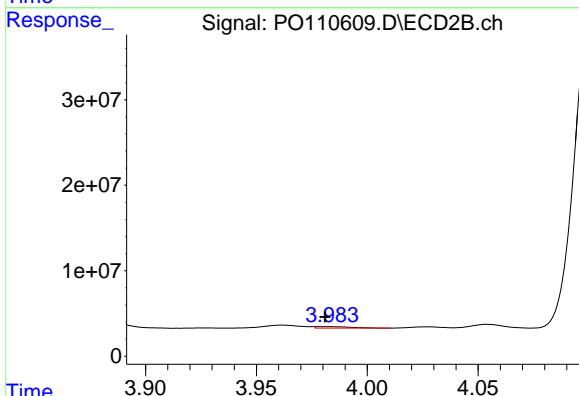
#8 AR-1221-1  
 R.T.: 3.882 min  
 Delta R.T.: -0.014 min  
 Response: 11363841  
 Conc: 170.19 ng/ml



#9 AR-1221-2

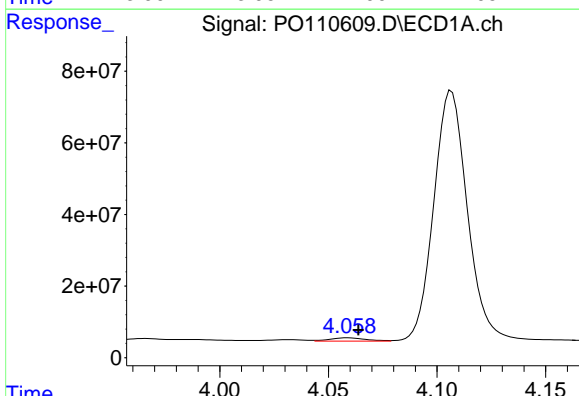
R.T.: 3.986 min  
 Delta R.T.: -0.001 min  
 Response: 6109614  
 Conc: 69.16 ng/ml

Instrument :  
 ECD\_O  
 ClientSampleId :  
 RBR200027



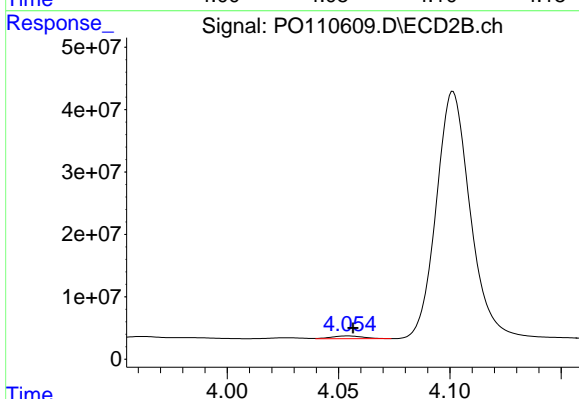
#9 AR-1221-2

R.T.: 3.982 min  
 Delta R.T.: 0.002 min  
 Response: 1960123  
 Conc: 39.13 ng/ml



#10 AR-1221-3

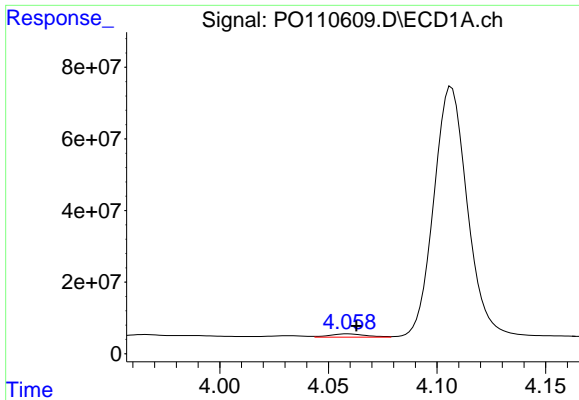
R.T.: 4.059 min  
 Delta R.T.: -0.005 min  
 Response: 10535205  
 Conc: 40.04 ng/ml



#10 AR-1221-3

R.T.: 4.054 min  
 Delta R.T.: -0.002 min  
 Response: 4204530  
 Conc: 28.19 ng/ml

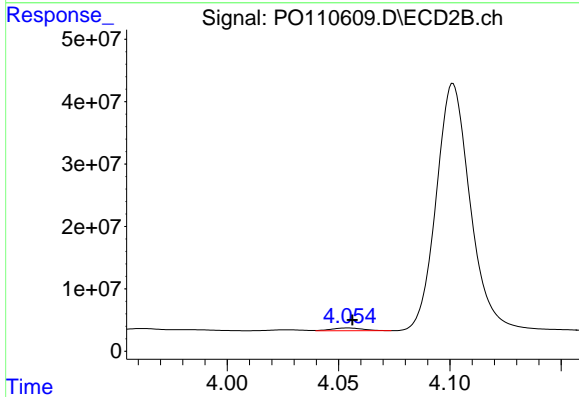




#11 AR-1232-1

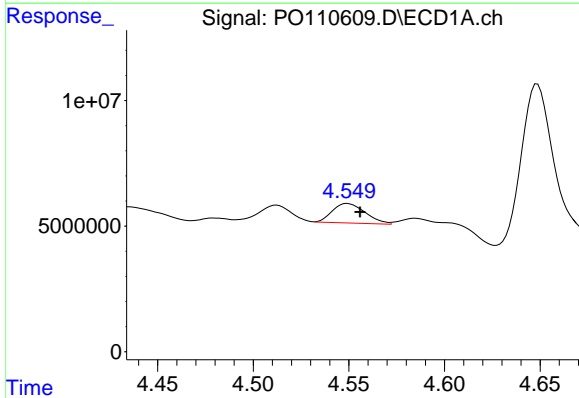
R.T.: 4.059 min  
 Delta R.T.: -0.004 min  
 Response: 10535205  
 Conc: 51.44 ng/ml

Instrument :  
 ECD\_O  
 ClientSampleId :  
 RBR200027



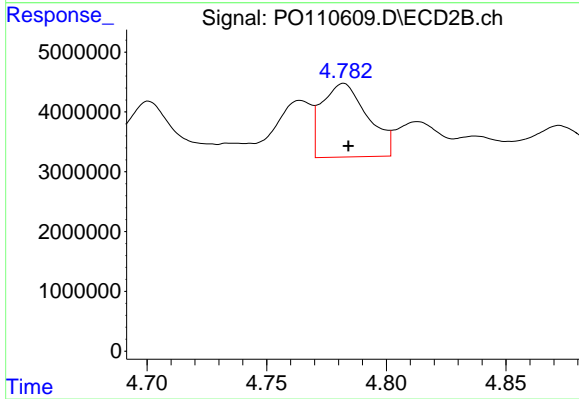
#11 AR-1232-1

R.T.: 4.054 min  
 Delta R.T.: -0.002 min  
 Response: 4204530  
 Conc: 36.55 ng/ml



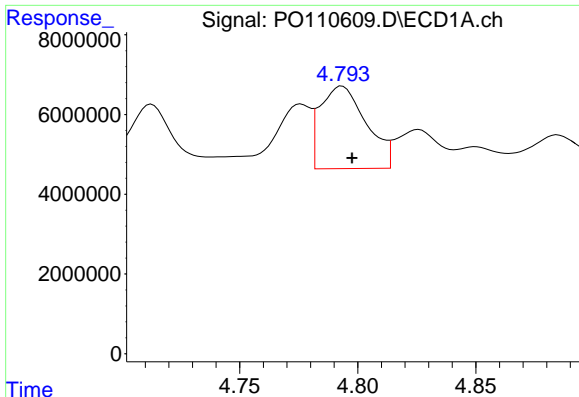
#12 AR-1232-2

R.T.: 4.549 min  
 Delta R.T.: -0.007 min  
 Response: 9262482  
 Conc: 86.80 ng/ml



#12 AR-1232-2

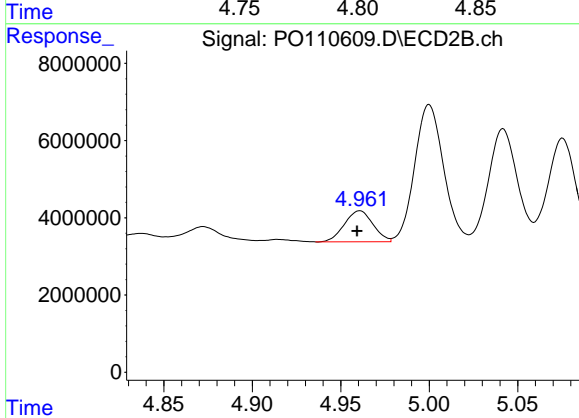
R.T.: 4.782 min  
 Delta R.T.: -0.002 min  
 Response: 16384168  
 Conc: 147.78 ng/ml



#13 AR-1232-3

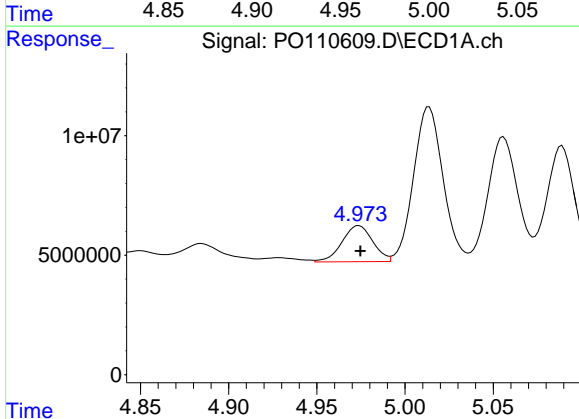
R.T.: 4.793 min  
 Delta R.T.: -0.004 min  
 Response: 28099178  
 Conc: 140.65 ng/ml

Instrument :  
 ECD\_O  
 ClientSampleId :  
 RBR200027



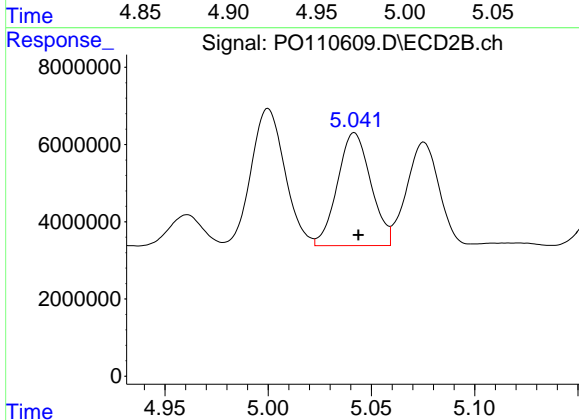
#13 AR-1232-3

R.T.: 4.961 min  
 Delta R.T.: 0.002 min  
 Response: 9033532  
 Conc: 157.92 ng/ml



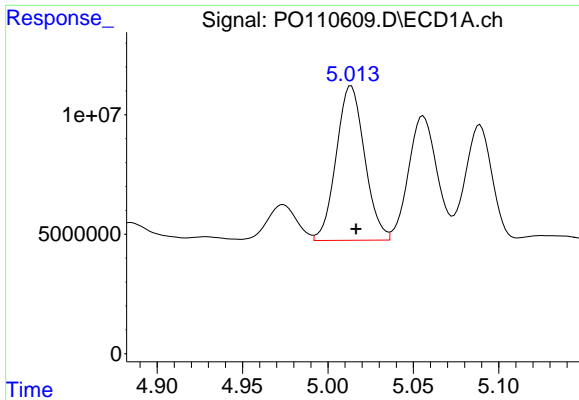
#14 AR-1232-4

R.T.: 4.974 min  
 Delta R.T.: 0.000 min  
 Response: 18345065  
 Conc: 179.33 ng/ml



#14 AR-1232-4

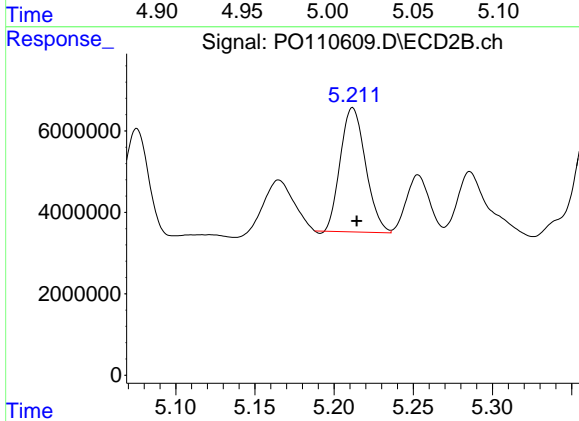
R.T.: 5.042 min  
 Delta R.T.: -0.002 min  
 Response: 32958433  
 Conc: 610.87 ng/ml



#15 AR-1232-5

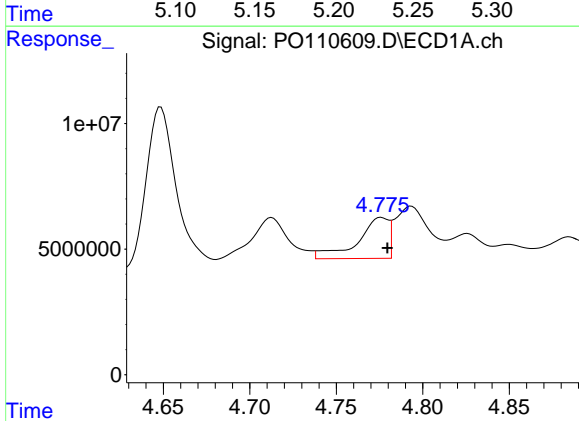
R.T.: 5.014 min  
 Delta R.T.: -0.003 min  
 Response: 74812562  
 Conc: 1085.78 ng/ml

Instrument :  
 ECD\_O  
 ClientSampleId :  
 RBR200027



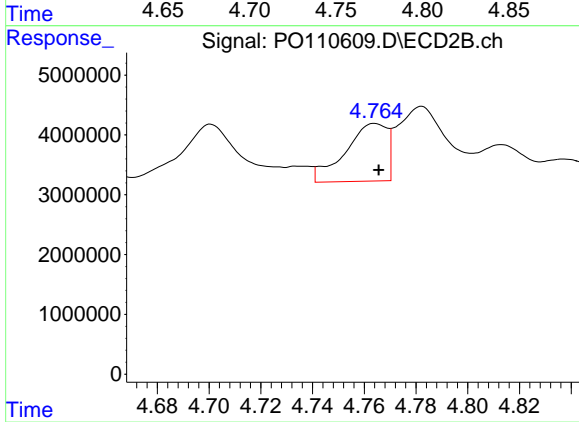
#15 AR-1232-5

R.T.: 5.212 min  
 Delta R.T.: -0.003 min  
 Response: 33784008  
 Conc: 591.29 ng/ml



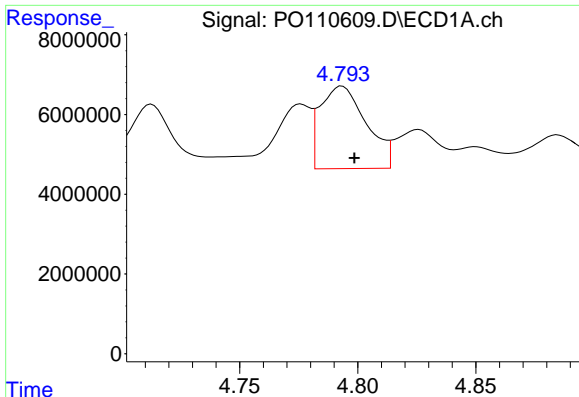
#16 AR-1242-1

R.T.: 4.776 min  
 Delta R.T.: -0.004 min  
 Response: 20238601  
 Conc: 72.92 ng/ml



#16 AR-1242-1

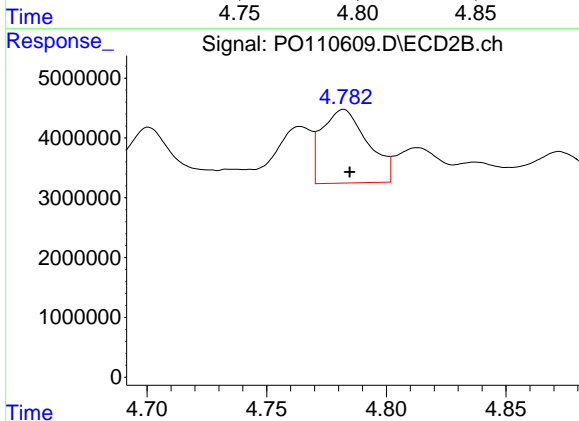
R.T.: 4.764 min  
 Delta R.T.: -0.002 min  
 Response: 10842852  
 Conc: 72.53 ng/ml



#17 AR-1242-2

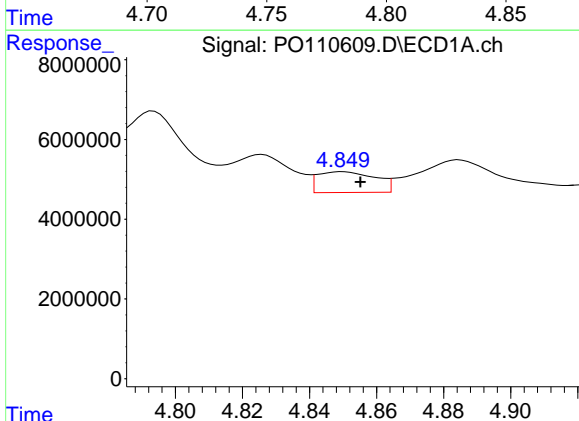
R.T.: 4.793 min  
 Delta R.T.: -0.005 min  
 Response: 28099178  
 Conc: 72.84 ng/ml

Instrument :  
 ECD\_O  
 ClientSampleId :  
 RBR200027



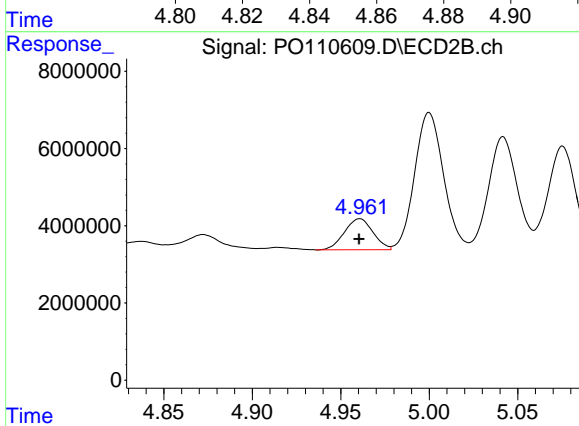
#17 AR-1242-2

R.T.: 4.782 min  
 Delta R.T.: -0.003 min  
 Response: 16384168  
 Conc: 76.79 ng/ml



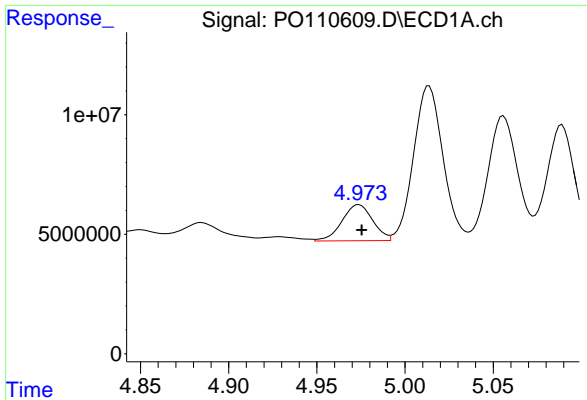
#18 AR-1242-3

R.T.: 4.850 min  
 Delta R.T.: -0.005 min  
 Response: 6217803  
 Conc: 22.35 ng/ml



#18 AR-1242-3

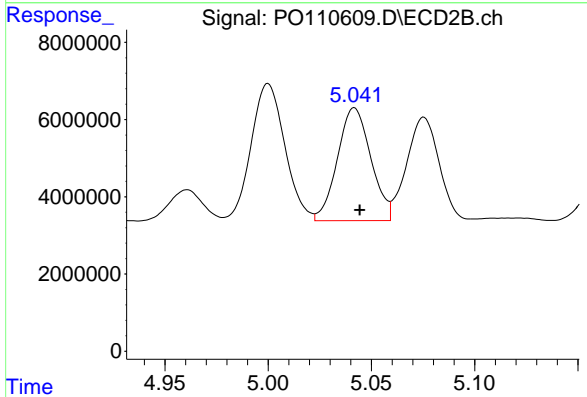
R.T.: 4.961 min  
 Delta R.T.: 0.000 min  
 Response: 9033532  
 Conc: 78.16 ng/ml



#19 AR-1242-4

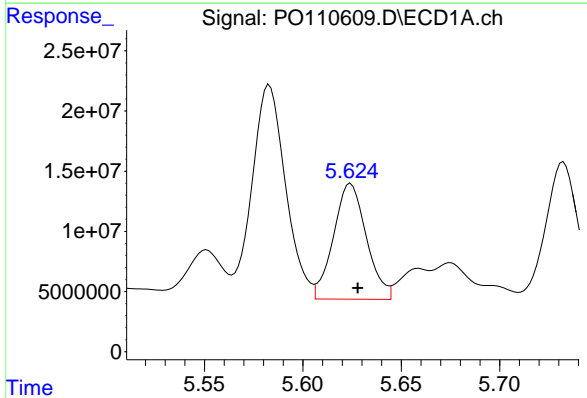
R.T.: 4.974 min  
 Delta R.T.: -0.002 min  
 Response: 18345065  
 Conc: 86.79 ng/ml

Instrument :  
 ECD\_O  
 ClientSampleId :  
 RBR200027



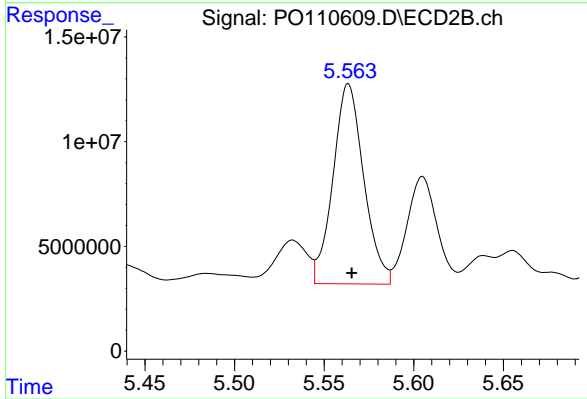
#19 AR-1242-4

R.T.: 5.042 min  
 Delta R.T.: -0.003 min  
 Response: 32958433  
 Conc: 274.43 ng/ml



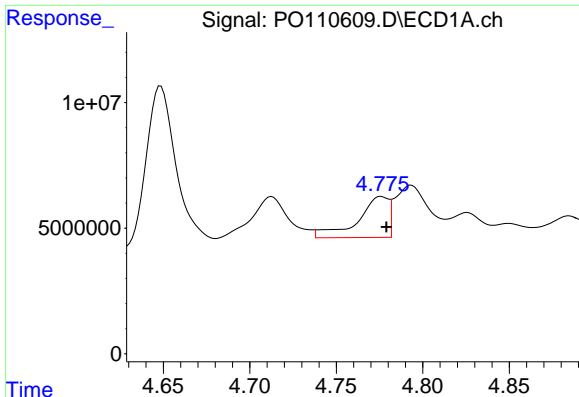
#20 AR-1242-5

R.T.: 5.624 min  
 Delta R.T.: -0.004 min  
 Response: 112031442  
 Conc: 494.85 ng/ml



#20 AR-1242-5

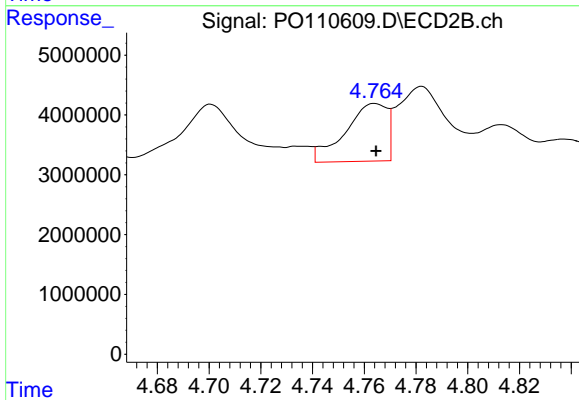
R.T.: 5.564 min  
 Delta R.T.: -0.002 min  
 Response: 113833193  
 Conc: 784.53 ng/ml



#21 AR-1248-1

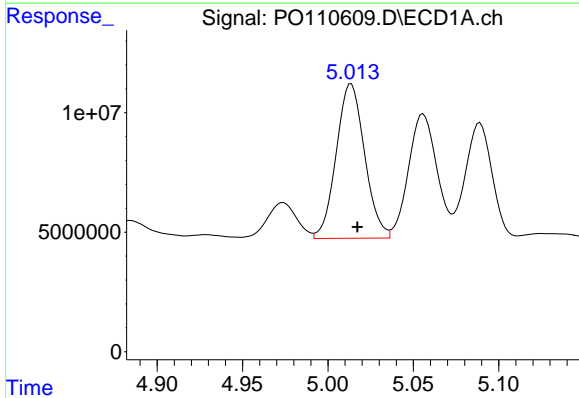
R.T.: 4.776 min  
 Delta R.T.: -0.003 min  
 Response: 20238601  
 Conc: 95.09 ng/ml

Instrument :  
 ECD\_O  
 ClientSampleId :  
 RBR200027



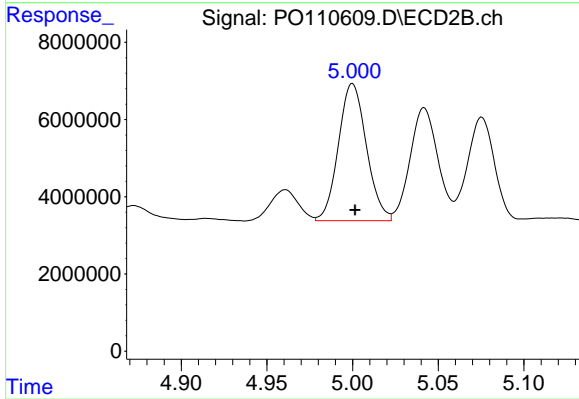
#21 AR-1248-1

R.T.: 4.764 min  
 Delta R.T.: 0.000 min  
 Response: 10842852  
 Conc: 94.18 ng/ml



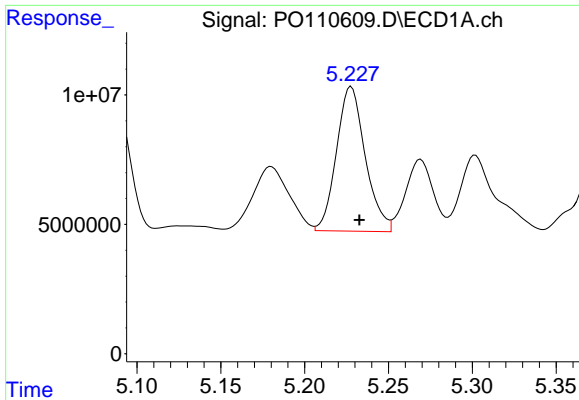
#22 AR-1248-2

R.T.: 5.014 min  
 Delta R.T.: -0.004 min  
 Response: 74812562  
 Conc: 252.81 ng/ml



#22 AR-1248-2

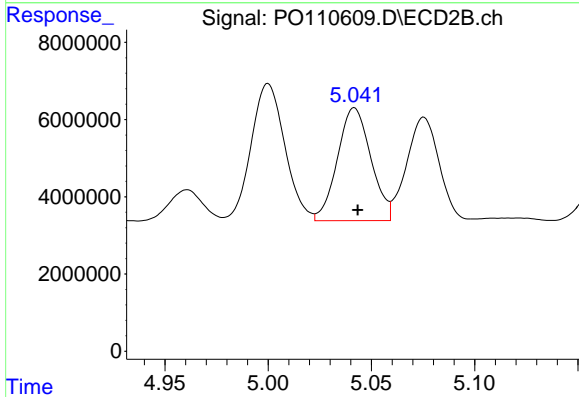
R.T.: 5.000 min  
 Delta R.T.: -0.001 min  
 Response: 40427397  
 Conc: 248.20 ng/ml



#23 AR-1248-3

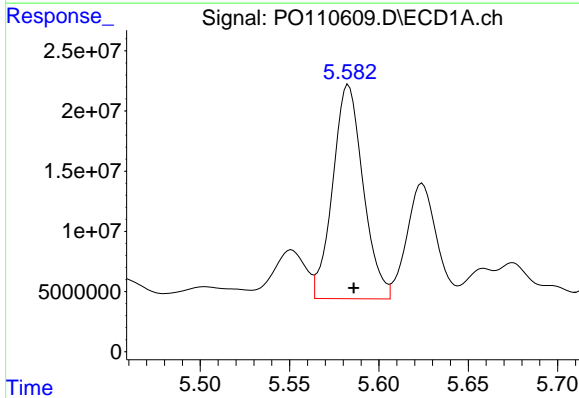
R.T.: 5.228 min  
 Delta R.T.: -0.005 min  
 Response: 66708558  
 Conc: 180.31 ng/ml

Instrument :  
 ECD\_O  
 ClientSampleId :  
 RBR200027



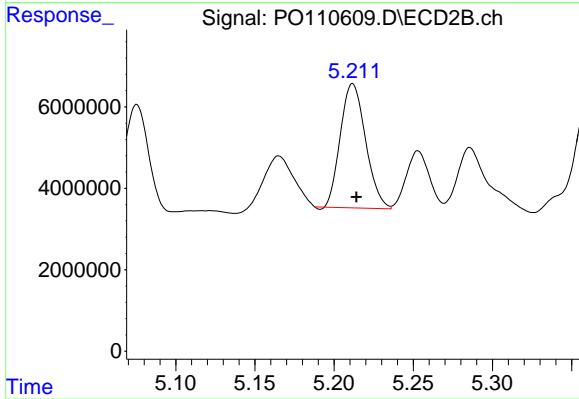
#23 AR-1248-3

R.T.: 5.042 min  
 Delta R.T.: -0.002 min  
 Response: 32958433  
 Conc: 187.42 ng/ml



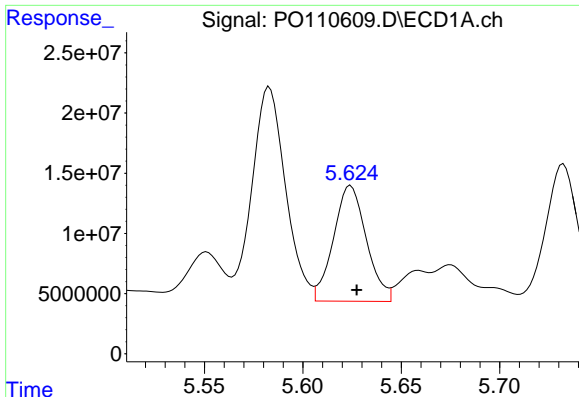
#24 AR-1248-4

R.T.: 5.583 min  
 Delta R.T.: -0.003 min  
 Response: 211003673  
 Conc: 405.75 ng/ml



#24 AR-1248-4

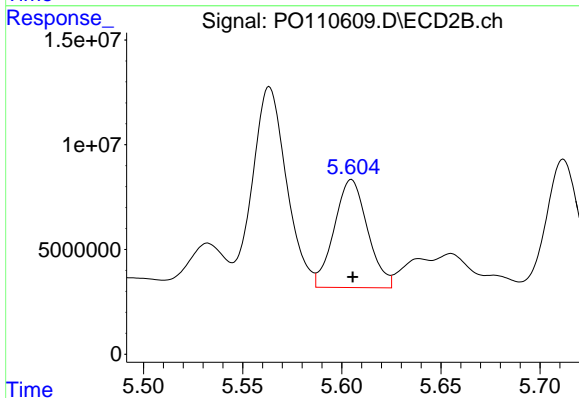
R.T.: 5.212 min  
 Delta R.T.: -0.002 min  
 Response: 33784008  
 Conc: 165.87 ng/ml



#25 AR-1248-5

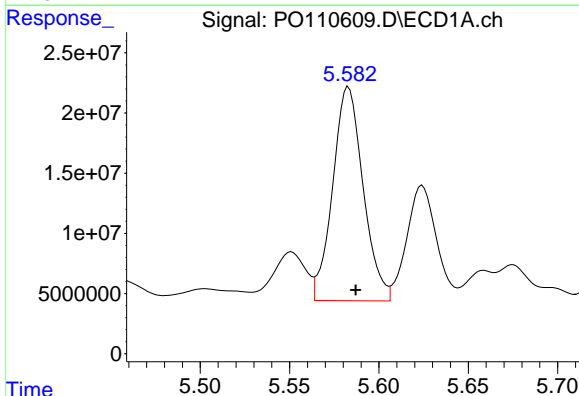
R.T.: 5.624 min  
 Delta R.T.: -0.003 min  
 Response: 112031442  
 Conc: 303.26 ng/ml

Instrument :  
 ECD\_O  
 ClientSampleId :  
 RBR200027



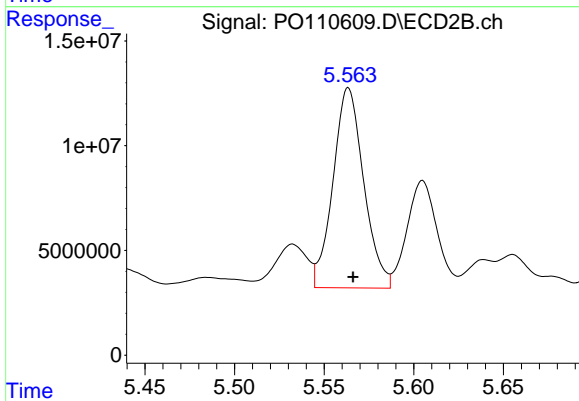
#25 AR-1248-5

R.T.: 5.605 min  
 Delta R.T.: 0.000 min  
 Response: 60435947  
 Conc: 306.17 ng/ml



#26 AR-1254-1

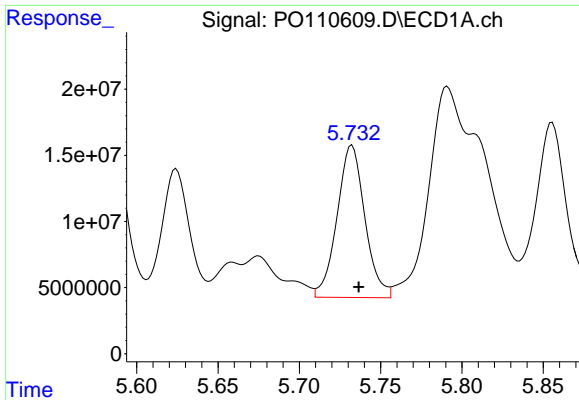
R.T.: 5.583 min  
 Delta R.T.: -0.004 min  
 Response: 211003673  
 Conc: 378.15 ng/ml



#26 AR-1254-1

R.T.: 5.564 min  
 Delta R.T.: -0.003 min  
 Response: 113833193  
 Conc: 377.56 ng/ml

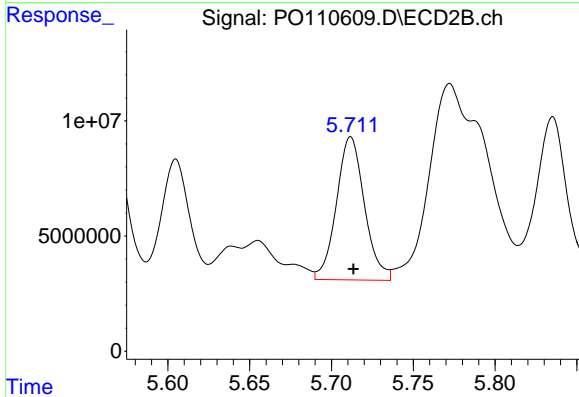




#27 AR-1254-2

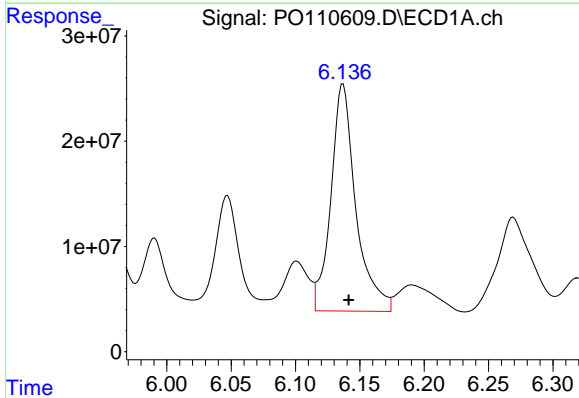
R.T.: 5.732 min  
 Delta R.T.: -0.004 min  
 Response: 136816948  
 Conc: 281.69 ng/ml

Instrument :  
 ECD\_O  
 ClientSampleId :  
 RBR200027



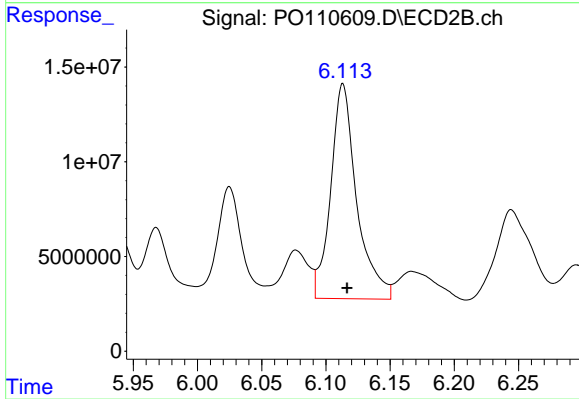
#27 AR-1254-2

R.T.: 5.712 min  
 Delta R.T.: -0.002 min  
 Response: 73981311  
 Conc: 279.51 ng/ml



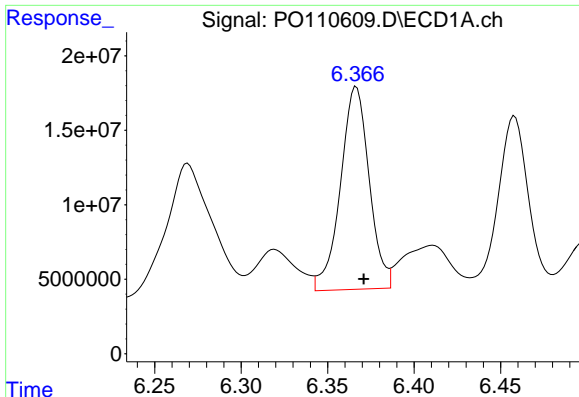
#28 AR-1254-3

R.T.: 6.137 min  
 Delta R.T.: -0.005 min  
 Response: 291299988  
 Conc: 371.93 ng/ml



#28 AR-1254-3

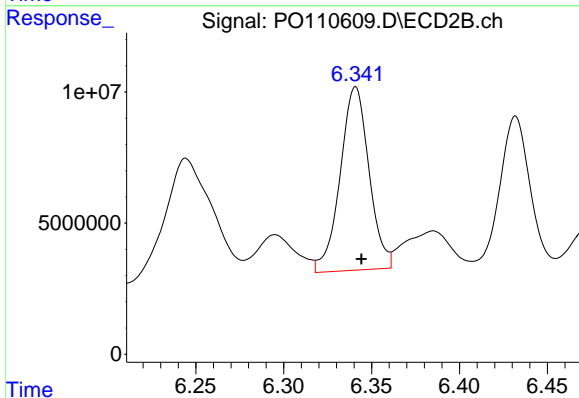
R.T.: 6.113 min  
 Delta R.T.: -0.003 min  
 Response: 159733274  
 Conc: 395.95 ng/ml



#29 AR-1254-4

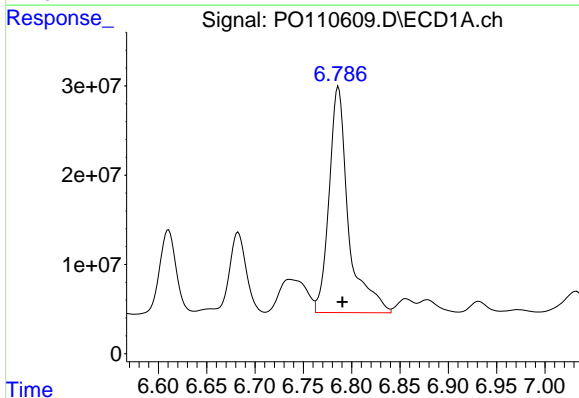
R.T.: 6.367 min  
 Delta R.T.: -0.004 min  
 Response: 157071164  
 Conc: 322.13 ng/ml

Instrument :  
 ECD\_O  
 ClientSampleId :  
 RBR200027



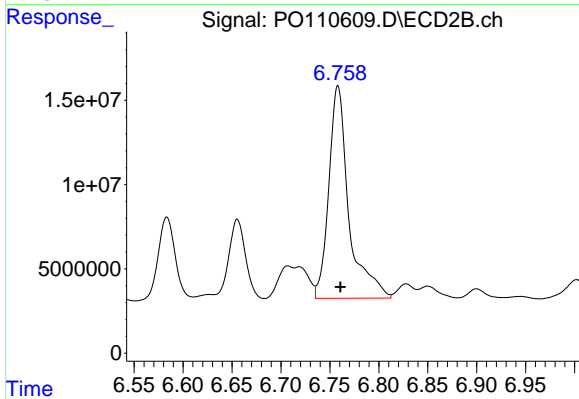
#29 AR-1254-4

R.T.: 6.341 min  
 Delta R.T.: -0.003 min  
 Response: 79952265  
 Conc: 348.05 ng/ml



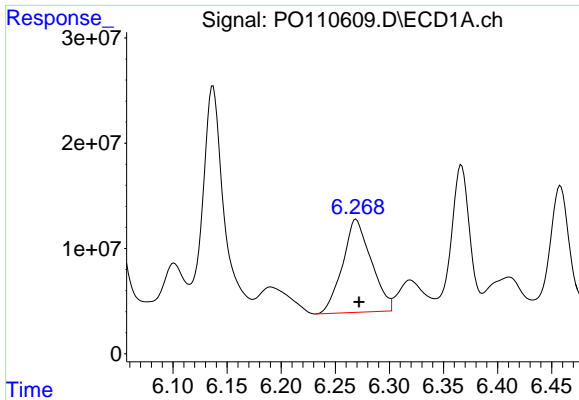
#30 AR-1254-5

R.T.: 6.786 min  
 Delta R.T.: -0.004 min  
 Response: 354591620  
 Conc: 505.91 ng/ml



#30 AR-1254-5

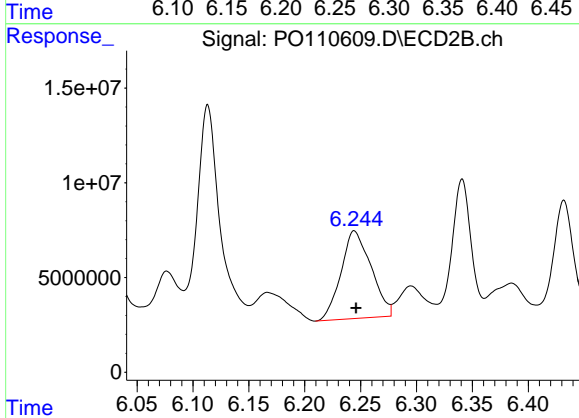
R.T.: 6.758 min  
 Delta R.T.: -0.003 min  
 Response: 179795392  
 Conc: 541.08 ng/ml



#31 AR-1260-1

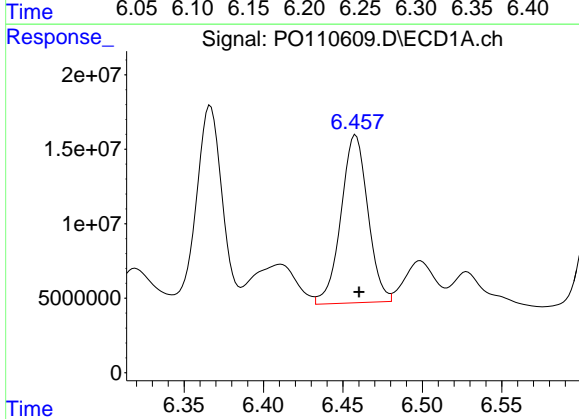
R.T.: 6.269 min  
 Delta R.T.: -0.003 min  
 Response: 162674322  
 Conc: 344.32 ng/ml

Instrument :  
 ECD\_O  
 ClientSampleId :  
 RBR200027



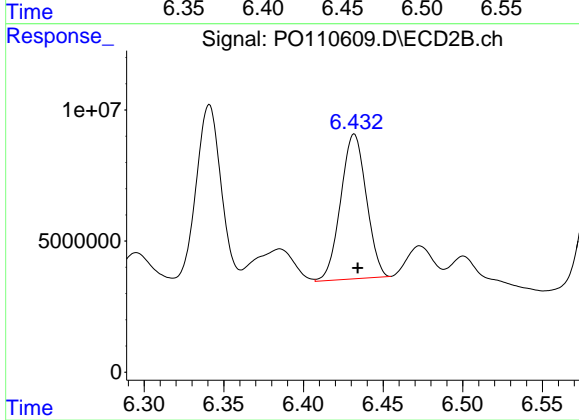
#31 AR-1260-1

R.T.: 6.244 min  
 Delta R.T.: -0.002 min  
 Response: 86737668  
 Conc: 352.64 ng/ml



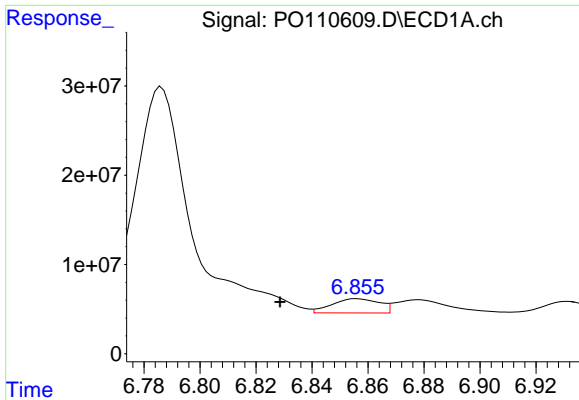
#32 AR-1260-2

R.T.: 6.458 min  
 Delta R.T.: -0.002 min  
 Response: 132640058  
 Conc: 226.18 ng/ml



#32 AR-1260-2

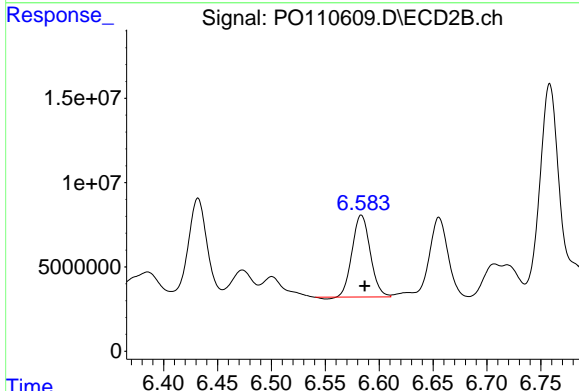
R.T.: 6.432 min  
 Delta R.T.: -0.002 min  
 Response: 61743458  
 Conc: 211.63 ng/ml



#33 AR-1260-3

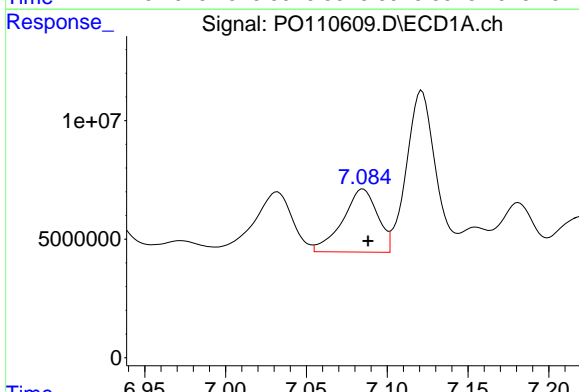
R.T.: 6.856 min  
 Delta R.T.: 0.028 min  
 Response: 18773505  
 Conc: 38.09 ng/ml

Instrument :  
 ECD\_O  
 ClientSampleId :  
 RBR200027



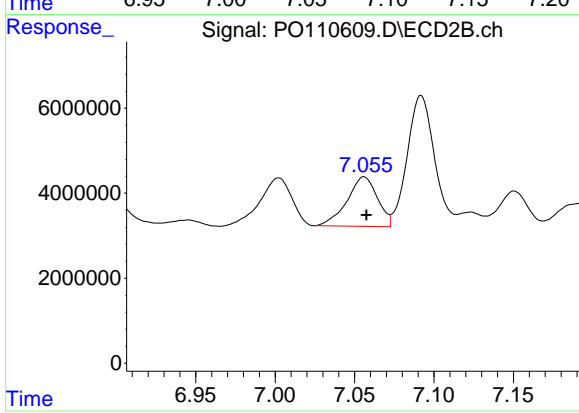
#33 AR-1260-3

R.T.: 6.583 min  
 Delta R.T.: -0.003 min  
 Response: 56608829  
 Conc: 208.98 ng/ml



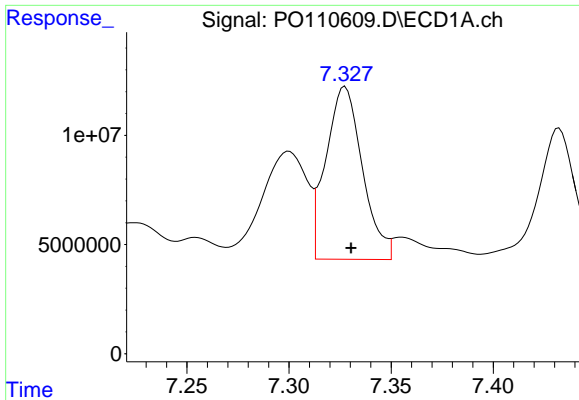
#34 AR-1260-4

R.T.: 7.085 min  
 Delta R.T.: -0.003 min  
 Response: 40010658  
 Conc: 94.27 ng/ml



#34 AR-1260-4

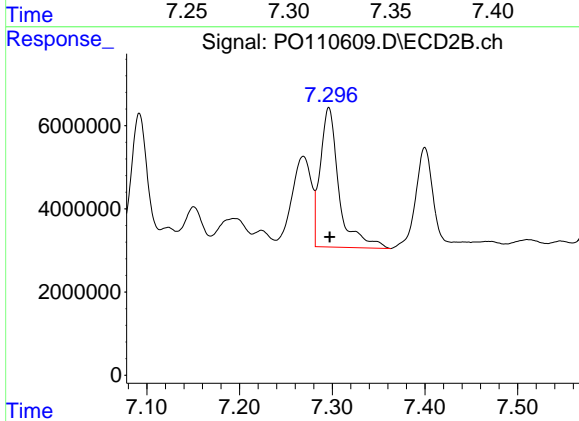
R.T.: 7.056 min  
 Delta R.T.: -0.002 min  
 Response: 15588928  
 Conc: 77.70 ng/ml



#35 AR-1260-5

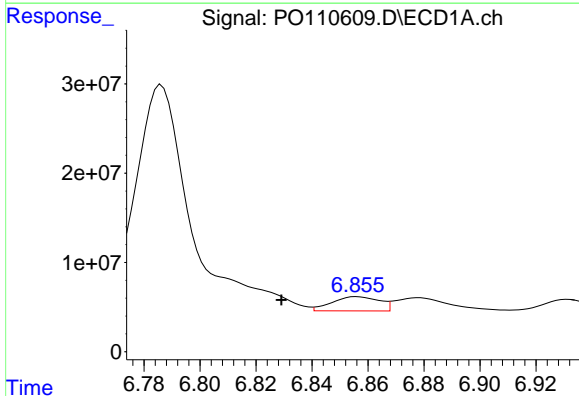
R.T.: 7.327 min  
 Delta R.T.: -0.003 min  
 Response: 98322781  
 Conc: 94.23 ng/ml

Instrument :  
 ECD\_O  
 ClientSampleId :  
 RBR200027



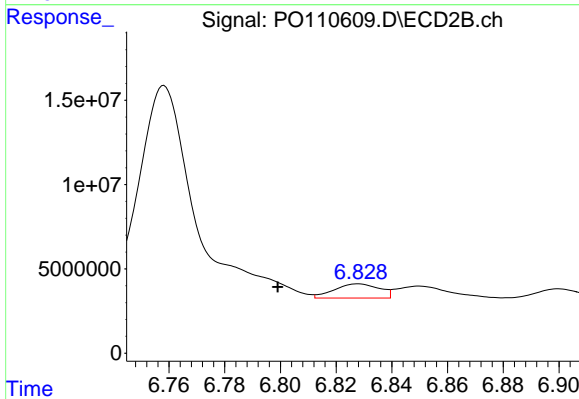
#35 AR-1260-5

R.T.: 7.296 min  
 Delta R.T.: -0.001 min  
 Response: 47349346  
 Conc: 103.19 ng/ml



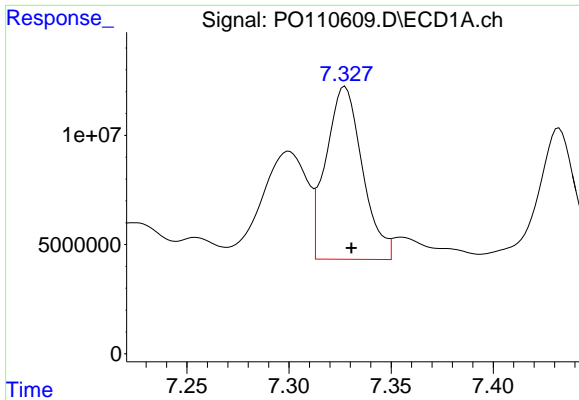
#36 AR-1262-1

R.T.: 6.856 min  
 Delta R.T.: 0.027 min  
 Response: 18773505  
 Conc: 26.76 ng/ml



#36 AR-1262-1

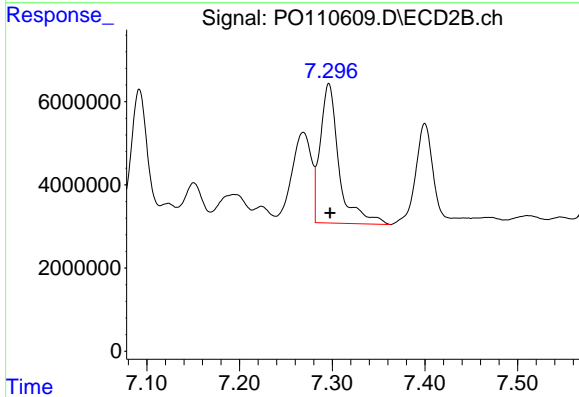
R.T.: 6.828 min  
 Delta R.T.: 0.029 min  
 Response: 9505800  
 Conc: 28.86 ng/ml



#37 AR-1262-2

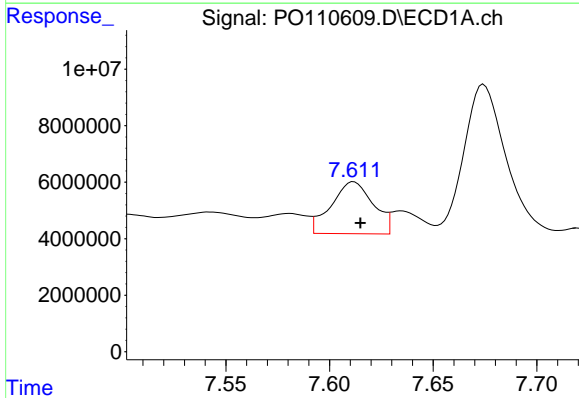
R.T.: 7.327 min  
 Delta R.T.: -0.003 min  
 Response: 98322781  
 Conc: 81.41 ng/ml

Instrument :  
 ECD\_O  
 ClientSampleId :  
 RBR200027



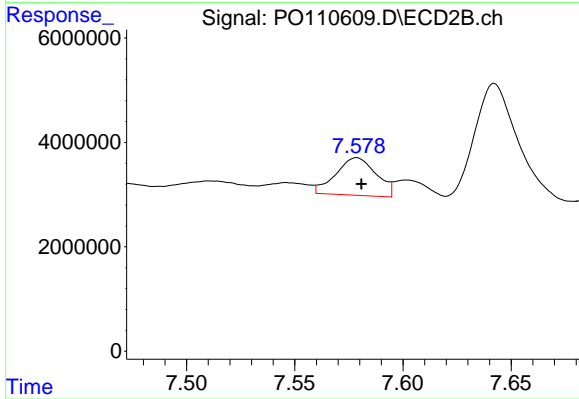
#37 AR-1262-2

R.T.: 7.296 min  
 Delta R.T.: -0.001 min  
 Response: 47349346  
 Conc: 93.12 ng/ml



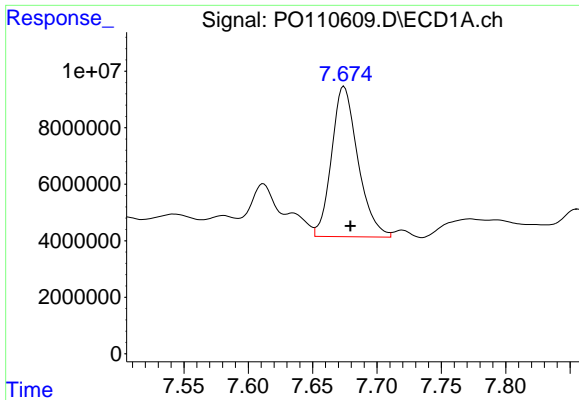
#38 AR-1262-3

R.T.: 7.612 min  
 Delta R.T.: -0.003 min  
 Response: 25987030  
 Conc: 51.04 ng/ml



#38 AR-1262-3

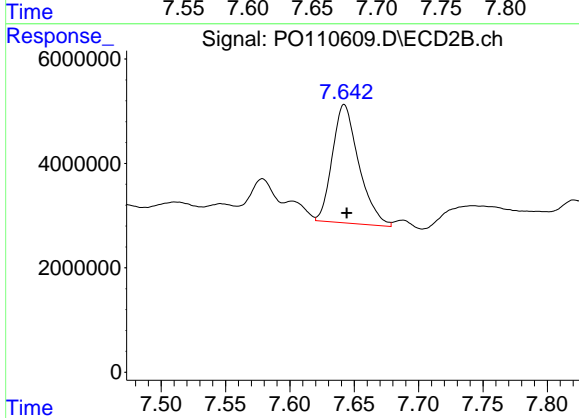
R.T.: 7.579 min  
 Delta R.T.: -0.002 min  
 Response: 9358208  
 Conc: 48.33 ng/ml



#39 AR-1262-4

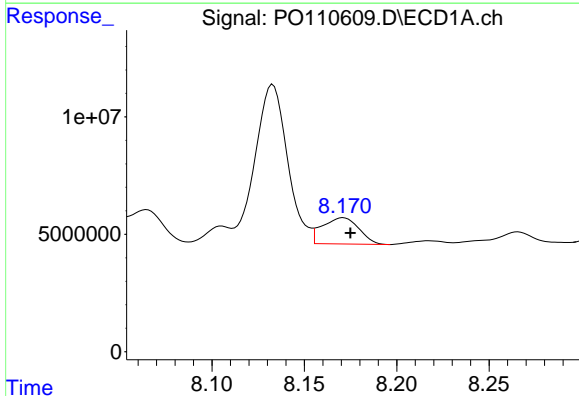
R.T.: 7.674 min  
 Delta R.T.: -0.005 min  
 Response: 75904762  
 Conc: 84.69 ng/ml

Instrument :  
 ECD\_O  
 ClientSampleId :  
 RBR200027



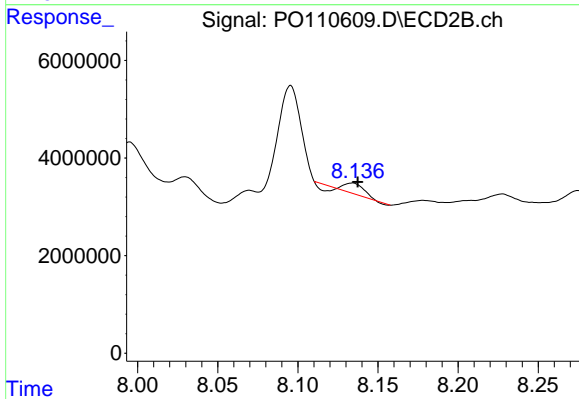
#39 AR-1262-4

R.T.: 7.642 min  
 Delta R.T.: -0.002 min  
 Response: 32449510  
 Conc: 93.50 ng/ml



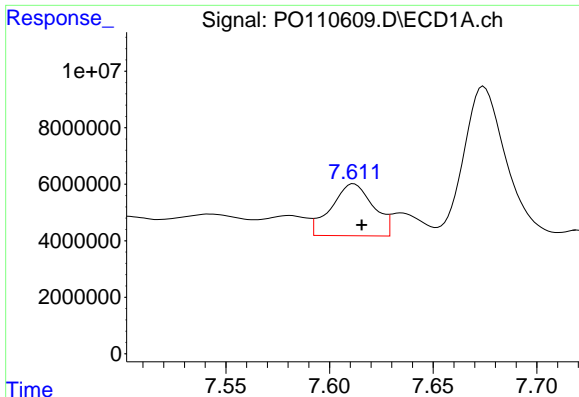
#40 AR-1262-5

R.T.: 8.171 min  
 Delta R.T.: -0.004 min  
 Response: 15409609  
 Conc: 38.24 ng/ml



#40 AR-1262-5

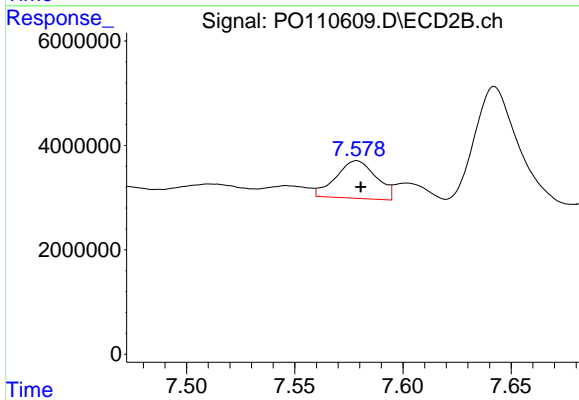
R.T.: 8.134 min  
 Delta R.T.: -0.003 min  
 Response: 1120920  
 Conc: 9.00 ng/ml



#41 AR-1268-1

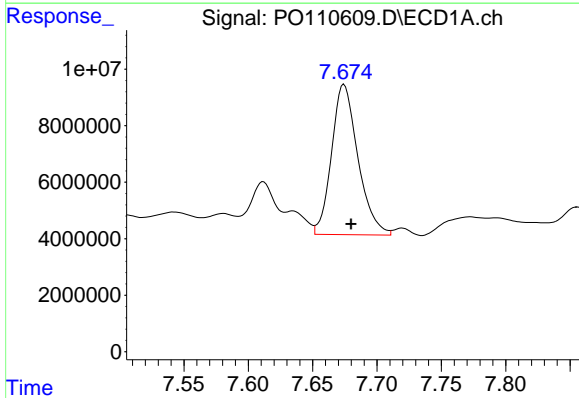
R.T.: 7.612 min  
 Delta R.T.: -0.004 min  
 Response: 25987030  
 Conc: 18.51 ng/ml

Instrument :  
 ECD\_O  
 ClientSampleId :  
 RBR200027



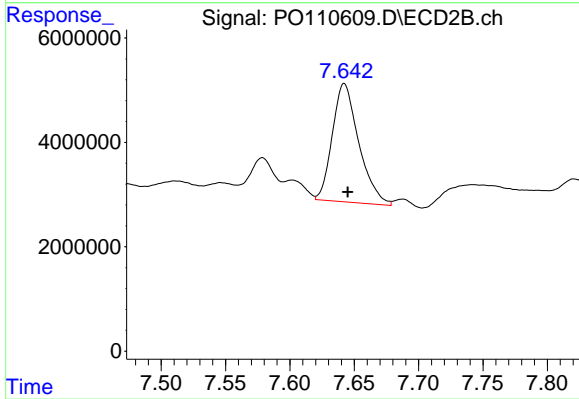
#41 AR-1268-1

R.T.: 7.579 min  
 Delta R.T.: -0.002 min  
 Response: 9358208  
 Conc: 17.09 ng/ml



#42 AR-1268-2

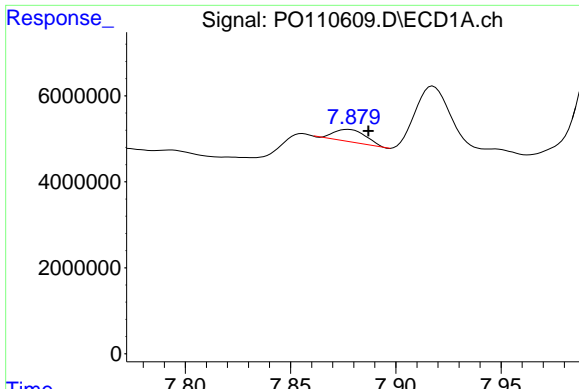
R.T.: 7.674 min  
 Delta R.T.: -0.005 min  
 Response: 75904762  
 Conc: 59.31 ng/ml



#42 AR-1268-2

R.T.: 7.642 min  
 Delta R.T.: -0.003 min  
 Response: 32449510  
 Conc: 65.23 ng/ml

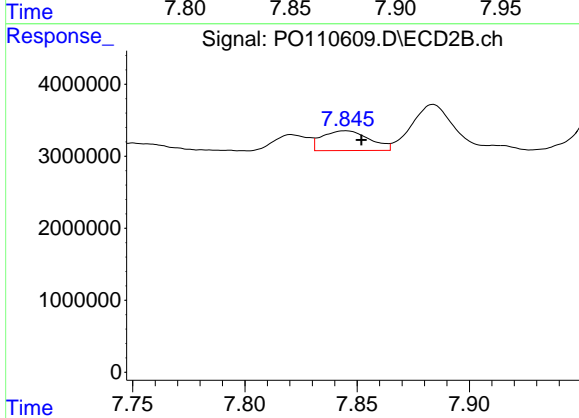




#43 AR-1268-3

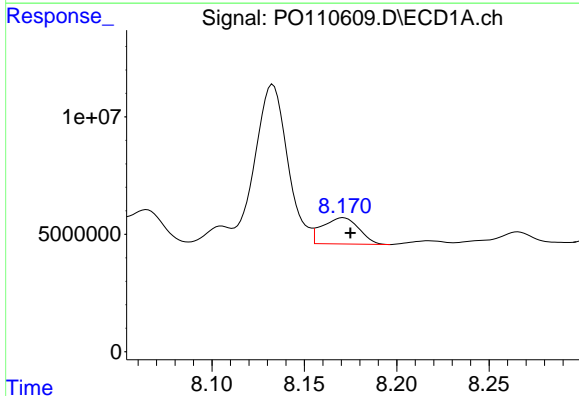
R.T.: 7.878 min  
 Delta R.T.: -0.009 min  
 Response: 3046131  
 Conc: 2.92 ng/ml

Instrument :  
 ECD\_O  
 ClientSampleId :  
 RBR200027



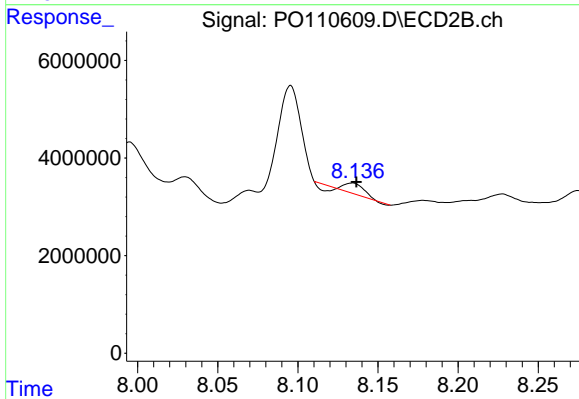
#43 AR-1268-3

R.T.: 7.845 min  
 Delta R.T.: -0.007 min  
 Response: 4024060  
 Conc: 10.83 ng/ml



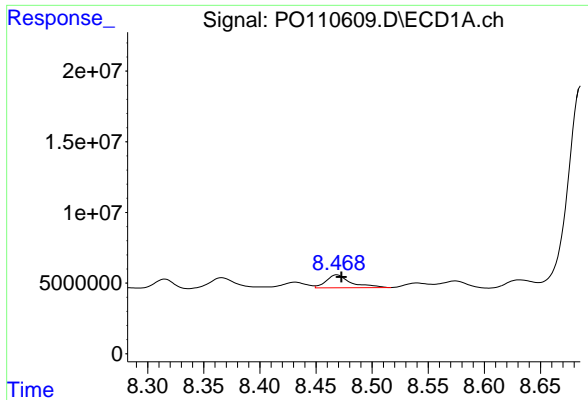
#44 AR-1268-4

R.T.: 8.171 min  
 Delta R.T.: -0.004 min  
 Response: 15409609  
 Conc: 34.69 ng/ml



#44 AR-1268-4

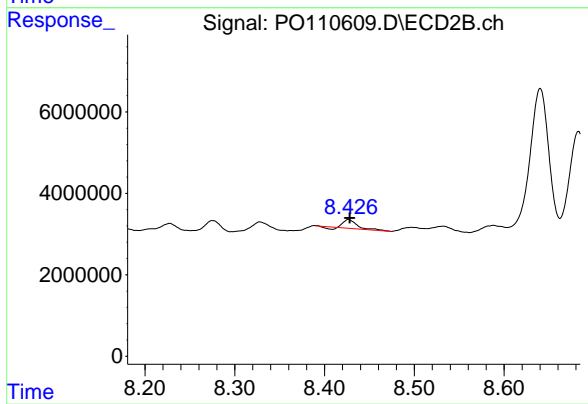
R.T.: 8.134 min  
 Delta R.T.: -0.002 min  
 Response: 1120920  
 Conc: 7.94 ng/ml



#45 AR-1268-5

R.T.: 8.469 min  
 Delta R.T.: -0.004 min  
 Response: 14145836  
 Conc: 4.39 ng/ml

Instrument :  
 ECD\_O  
 ClientSampleId :  
 RBR200027



#45 AR-1268-5

R.T.: 8.427 min  
 Delta R.T.: -0.002 min  
 Response: 2041816  
 Conc: 2.59 ng/ml