

Data Path : Z:\pestpcbsrv\HPCHEM1\ECD_O\Data\P0042225\
 Data File : P0110589.D
 Signal(s) : Signal #1: ECD1A.ch Signal #2: ECD2B.ch
 Acq On : 22 Apr 2025 10:45
 Operator : YP/AJ
 Sample : AR1248CCC500
 Misc :
 ALS Vial : 5 Sample Multiplier: 1

Instrument :
 ECD_O
 ClientSampleId :
 AR1248CCC500

Integration File signal 1: autoint1.e
 Integration File signal 2: autoint2.e
 Quant Time: Apr 22 11:59:28 2025
 Quant Method : Z:\pestpcbsrv\HPCHEM1\ECD_O\methods\P0041025.M
 Quant Title : GC EXTRACTABLES
 QLast Update : Fri Apr 11 02:12:41 2025
 Response via : Initial Calibration
 Integrator: ChemStation

Volume Inj. : 2 µl
 Signal #1 Phase : ZB-MR1 Signal #2 Phase: ZB-MR2
 Signal #1 Info : 30Mx0.32mmx 0.50µ Signal #2 Info : 30M x 0.32mm x 0.25µm

Compound	RT#1	RT#2	Resp#1	Resp#2	ng/ml	ng/ml

System Monitoring Compounds						
1) SA Tetrachlo...	3.688	3.685	516.2E6	269.8E6	58.996	54.074
2) SA Decachlor...	8.732	8.684	391.0E6	93216470	49.526	48.424
Target Compounds						
21) L5 AR-1248-1	4.778	4.765	123.2E6	61657749	579.081	535.540
22) L5 AR-1248-2	5.016	5.001	166.1E6	84610966	561.161	519.460
23) L5 AR-1248-3	5.231	5.043	208.3E6	90213914	563.141	512.999
24) L5 AR-1248-4	5.585	5.213	290.3E6	105.9E6	558.250	520.102
25) L5 AR-1248-5	5.628	5.605	205.6E6	102.2E6	556.590	517.851

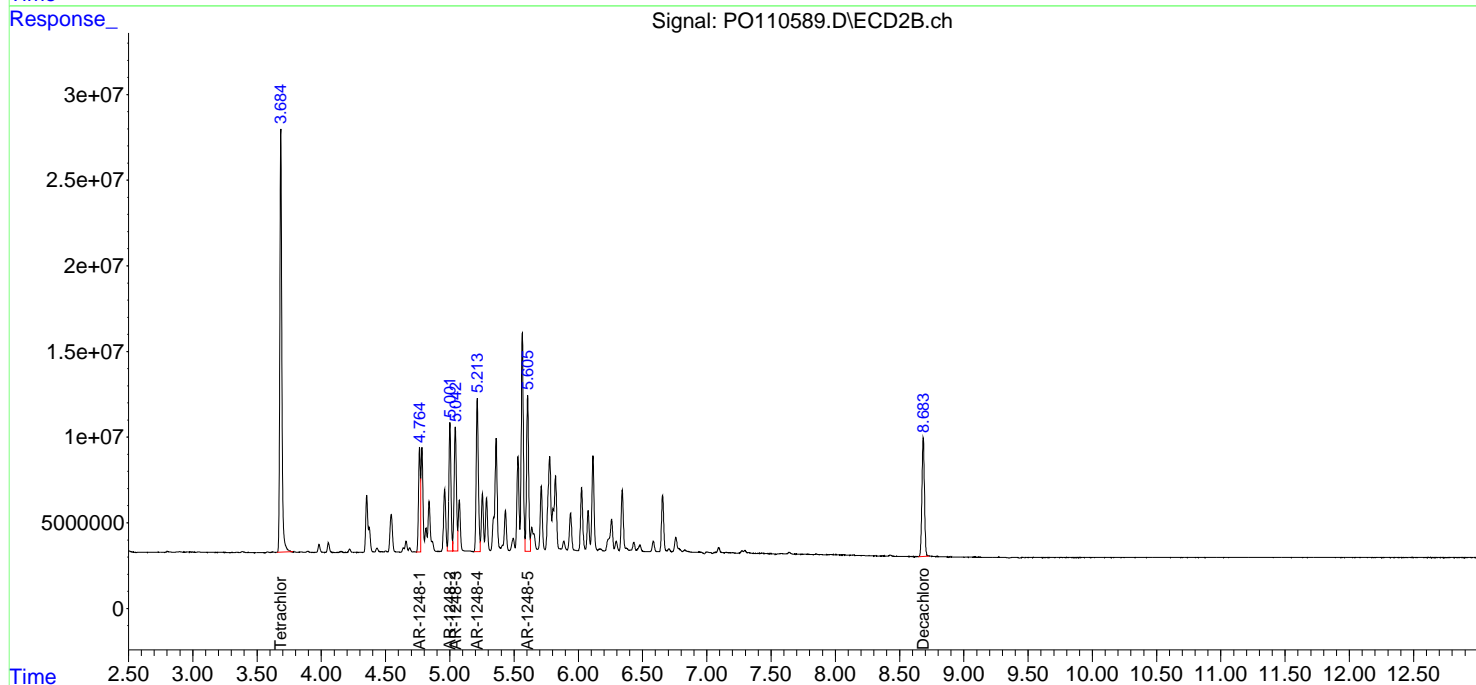
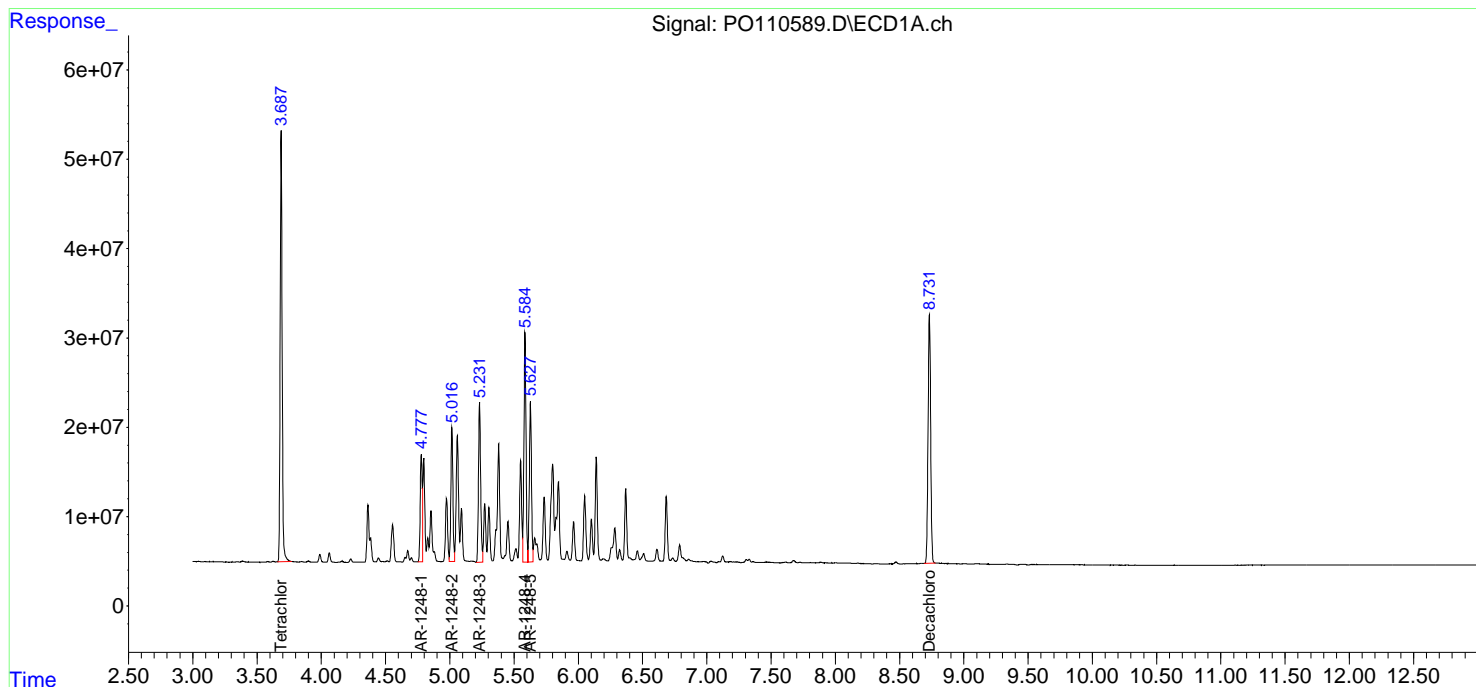
(f)=RT Delta > 1/2 Window (#)=Amounts differ by > 25% (m)=manual int.

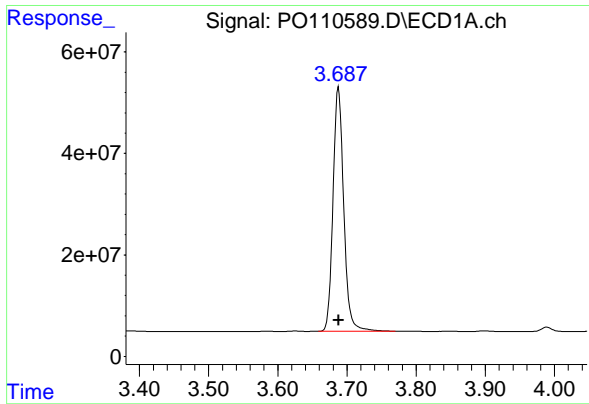
Data Path : Z:\pestpcbsrv\HPCHEM1\ECD_O\Data\PO042225\
 Data File : PO110589.D
 Signal(s) : Signal #1: ECD1A.ch Signal #2: ECD2B.ch
 Acq On : 22 Apr 2025 10:45
 Operator : YP/AJ
 Sample : AR1248CCC500
 Misc :
 ALS Vial : 5 Sample Multiplier: 1

Instrument :
 ECD_O
 ClientSampleId :
 AR1248CCC500

Integration File signal 1: autoint1.e
 Integration File signal 2: autoint2.e
 Quant Time: Apr 22 11:59:28 2025
 Quant Method : Z:\pestpcbsrv\HPCHEM1\ECD_O\methods\PO041025.M
 Quant Title : GC EXTRACTABLES
 QLast Update : Fri Apr 11 02:12:41 2025
 Response via : Initial Calibration
 Integrator: ChemStation

Volume Inj. : 2 µl
 Signal #1 Phase : ZB-MR1 Signal #2 Phase: ZB-MR2
 Signal #1 Info : 30Mx0.32mmx 0.50µm Signal #2 Info : 30M x 0.32mm x 0.25µm

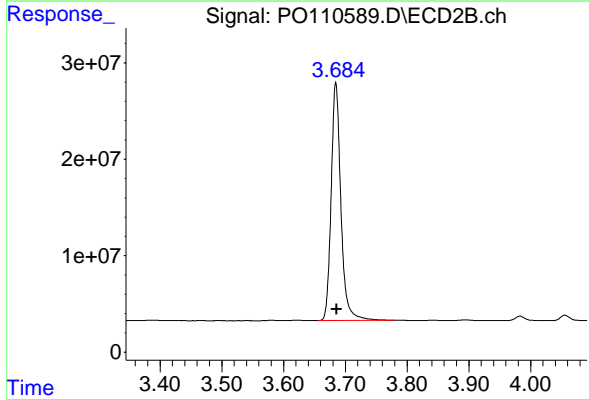




#1 Tetrachloro-m-xylene

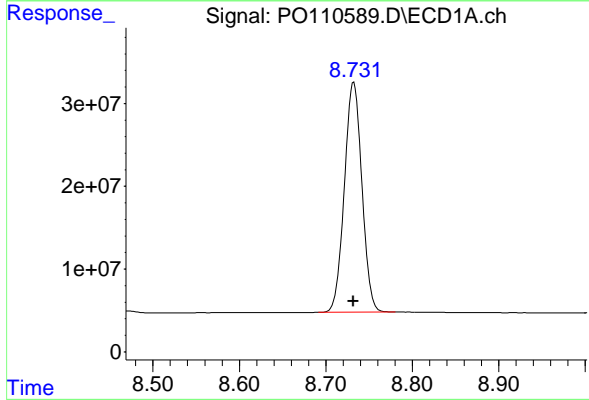
R.T.: 3.688 min
 Delta R.T.: 0.000 min
 Response: 516157987
 Conc: 59.00 ng/ml

Instrument :
 ECD_O
 ClientSampleId :
 AR1248CCC500



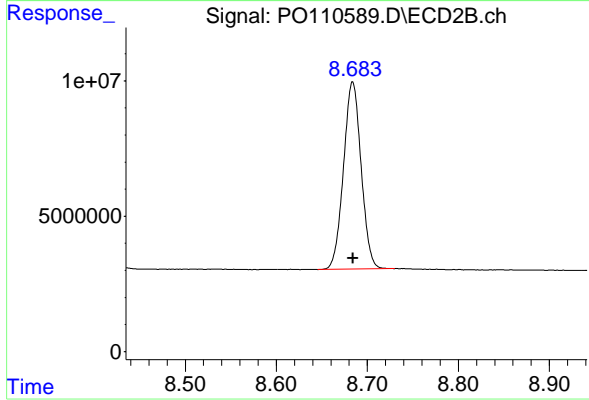
#1 Tetrachloro-m-xylene

R.T.: 3.685 min
 Delta R.T.: -0.001 min
 Response: 269817895
 Conc: 54.07 ng/ml



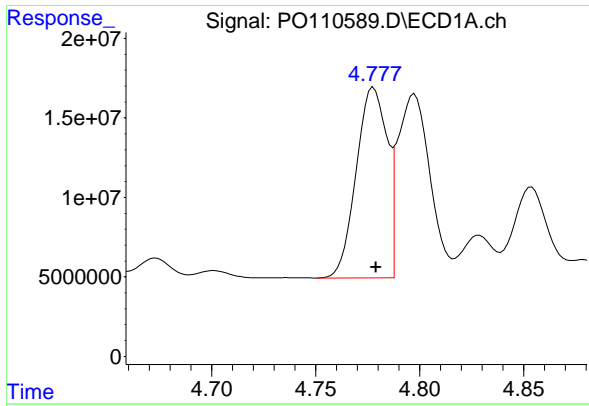
#2 Decachlorobiphenyl

R.T.: 8.732 min
 Delta R.T.: 0.000 min
 Response: 391003672
 Conc: 49.53 ng/ml



#2 Decachlorobiphenyl

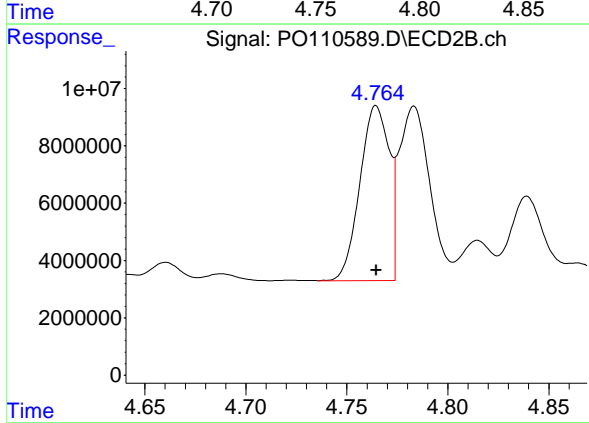
R.T.: 8.684 min
 Delta R.T.: 0.000 min
 Response: 93216470
 Conc: 48.42 ng/ml



#21 AR-1248-1

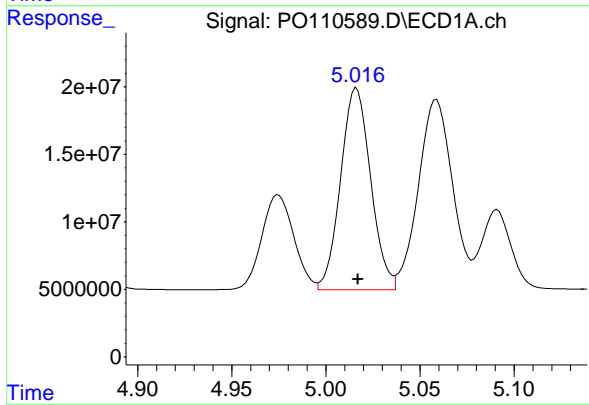
R.T.: 4.778 min
 Delta R.T.: -0.001 min
 Response: 123249479
 Conc: 579.08 ng/ml

Instrument :
 ECD_O
 ClientSampleId :
 AR1248CCC500



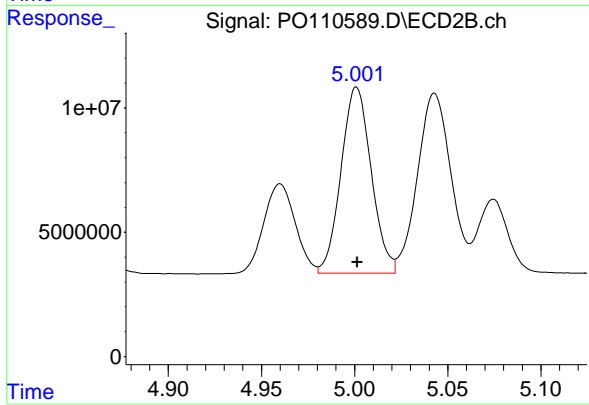
#21 AR-1248-1

R.T.: 4.765 min
 Delta R.T.: 0.000 min
 Response: 61657749
 Conc: 535.54 ng/ml



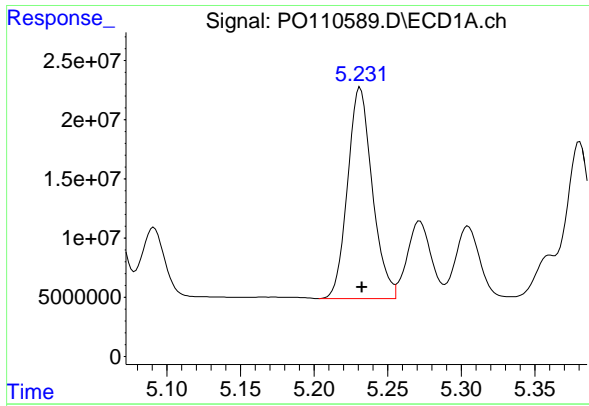
#22 AR-1248-2

R.T.: 5.016 min
 Delta R.T.: 0.000 min
 Response: 166061662
 Conc: 561.16 ng/ml



#22 AR-1248-2

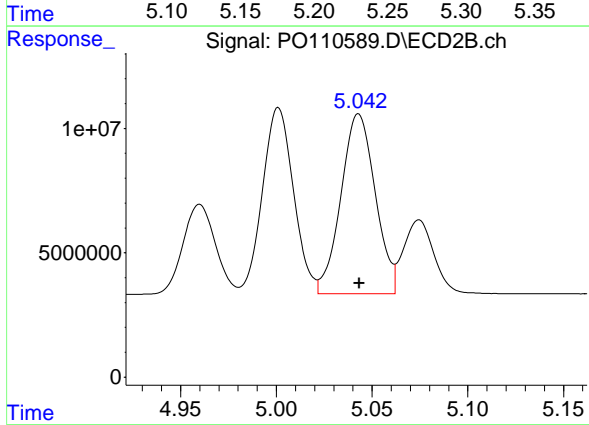
R.T.: 5.001 min
 Delta R.T.: 0.000 min
 Response: 84610966
 Conc: 519.46 ng/ml



#23 AR-1248-3

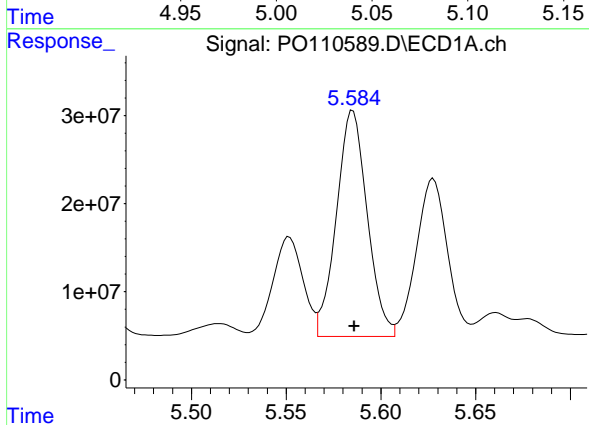
R.T.: 5.231 min
 Delta R.T.: -0.001 min
 Response: 208340506
 Conc: 563.14 ng/ml

Instrument :
 ECD_O
 ClientSampleId :
 AR1248CCC500



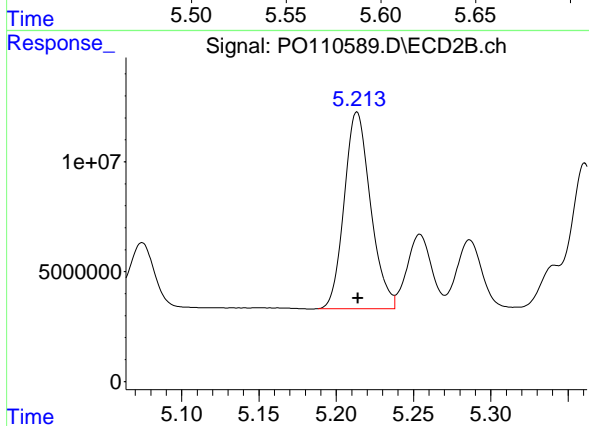
#23 AR-1248-3

R.T.: 5.043 min
 Delta R.T.: 0.000 min
 Response: 90213914
 Conc: 513.00 ng/ml



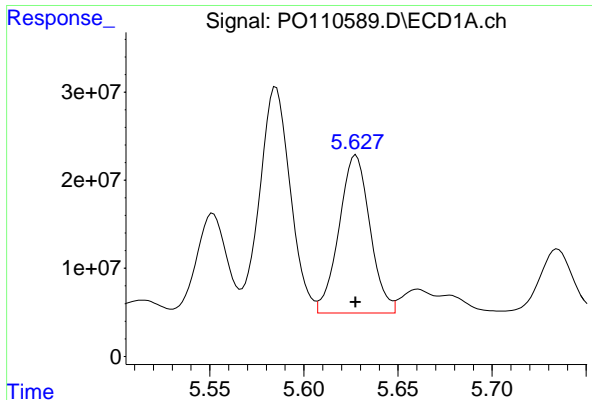
#24 AR-1248-4

R.T.: 5.585 min
 Delta R.T.: 0.000 min
 Response: 290307097
 Conc: 558.25 ng/ml



#24 AR-1248-4

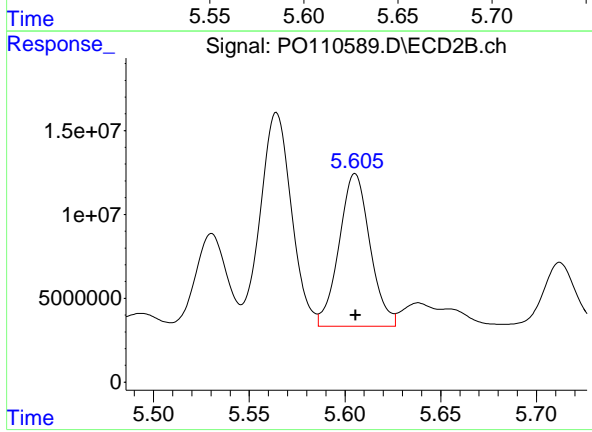
R.T.: 5.213 min
 Delta R.T.: 0.000 min
 Response: 105933650
 Conc: 520.10 ng/ml



#25 AR-1248-5

R.T.: 5.628 min
Delta R.T.: 0.000 min
Response: 205618805
Conc: 556.59 ng/ml

Instrument :
ECD_O
ClientSampleId :
AR1248CCC500



#25 AR-1248-5

R.T.: 5.605 min
Delta R.T.: 0.000 min
Response: 102221643
Conc: 517.85 ng/ml