

Data Path : Z:\pestpcbsrv\HPCHEM1\ECD_0\Data\P0042225\
 Data File : P0110608.D
 Signal(s) : Signal #1: ECD1A.ch Signal #2: ECD2B.ch
 Acq On : 22 Apr 2025 18:03
 Operator : YP/AJ
 Sample : PB167687BS
 Misc :
 ALS Vial : 18 Sample Multiplier: 1

Instrument :
 ECD_0
 ClientSampleId :
 PB167687BS

Integration File signal 1: autoint1.e
 Integration File signal 2: autoint2.e
 Quant Time: Apr 23 06:59:48 2025
 Quant Method : Z:\pestpcbsrv\HPCHEM1\ECD_0\methods\P0041025.M
 Quant Title : GC EXTRACTABLES
 QLast Update : Fri Apr 11 02:12:41 2025
 Response via : Initial Calibration
 Integrator: ChemStation

Volume Inj. : 2 µl
 Signal #1 Phase : ZB-MR1 Signal #2 Phase: ZB-MR2
 Signal #1 Info : 30Mx0.32mmx 0.50µ Signal #2 Info : 30M x 0.32mm x 0.25µm

Compound	RT#1	RT#2	Resp#1	Resp#2	ng/ml	ng/ml

System Monitoring Compounds						
1) SA Tetrachlo...	3.687	3.685	167.8E6	90009398	19.177	18.039
2) SA Decachlor...	8.732	8.684	141.1E6	37286360	17.870	19.370
Target Compounds						
3) L1 AR-1016-1	4.778	4.765	153.4E6	78978543	467.479	449.996
4) L1 AR-1016-2	4.797	4.784	214.0E6	110.5E6	470.383	439.328
5) L1 AR-1016-3	4.853	4.959	148.2E6	59888639	459.528	441.296
6) L1 AR-1016-4	4.974	5.001	116.3E6	48825368	466.923	426.915
7) L1 AR-1016-5	5.231	5.214	120.1E6	62729785	446.292	420.797
31) L7 AR-1260-1	6.272	6.245	221.3E6	111.4E6	468.329	453.040
32) L7 AR-1260-2	6.460	6.433	262.1E6	129.1E6	446.940	442.439
33) L7 AR-1260-3	6.827	6.586	186.8E6	118.9E6	378.966	438.755
34) L7 AR-1260-4	7.088	7.056	186.9E6	80098416	440.287	399.215
35) L7 AR-1260-5	7.330	7.298	437.4E6	175.6E6	419.133	382.720

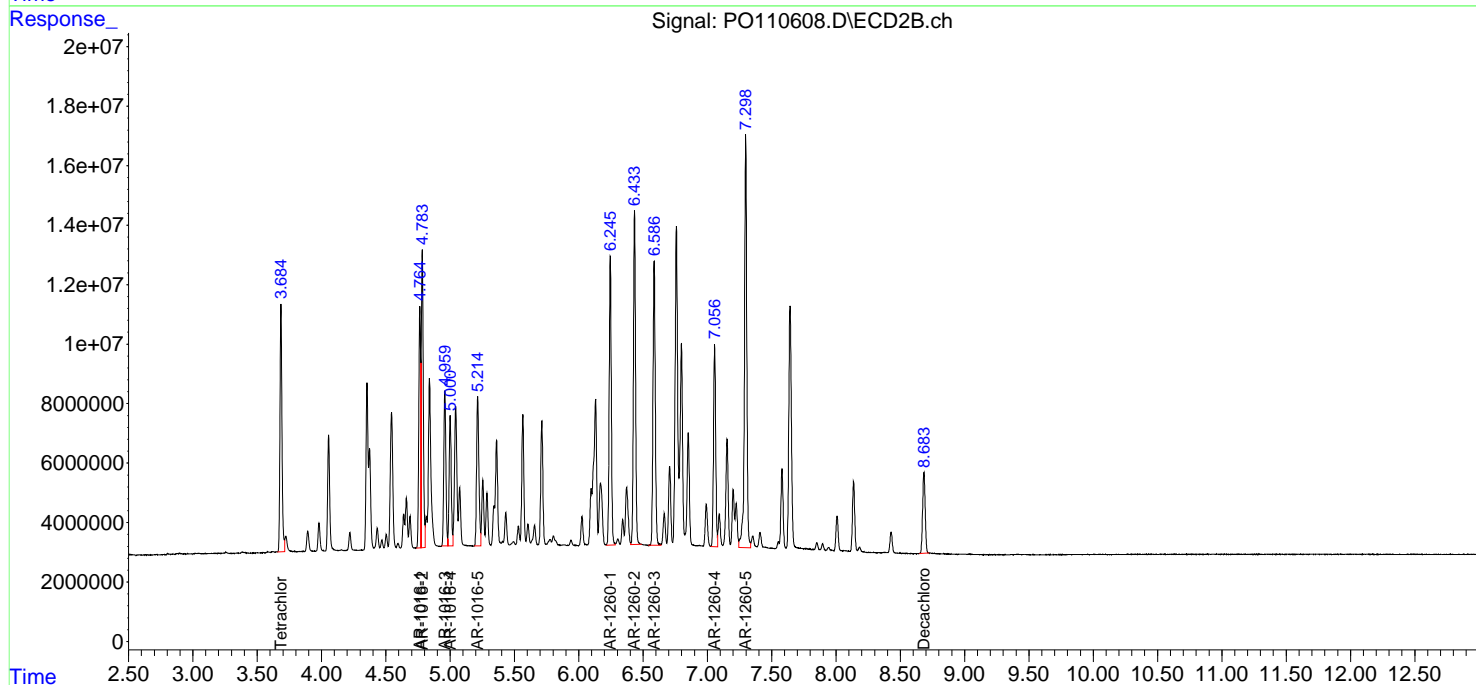
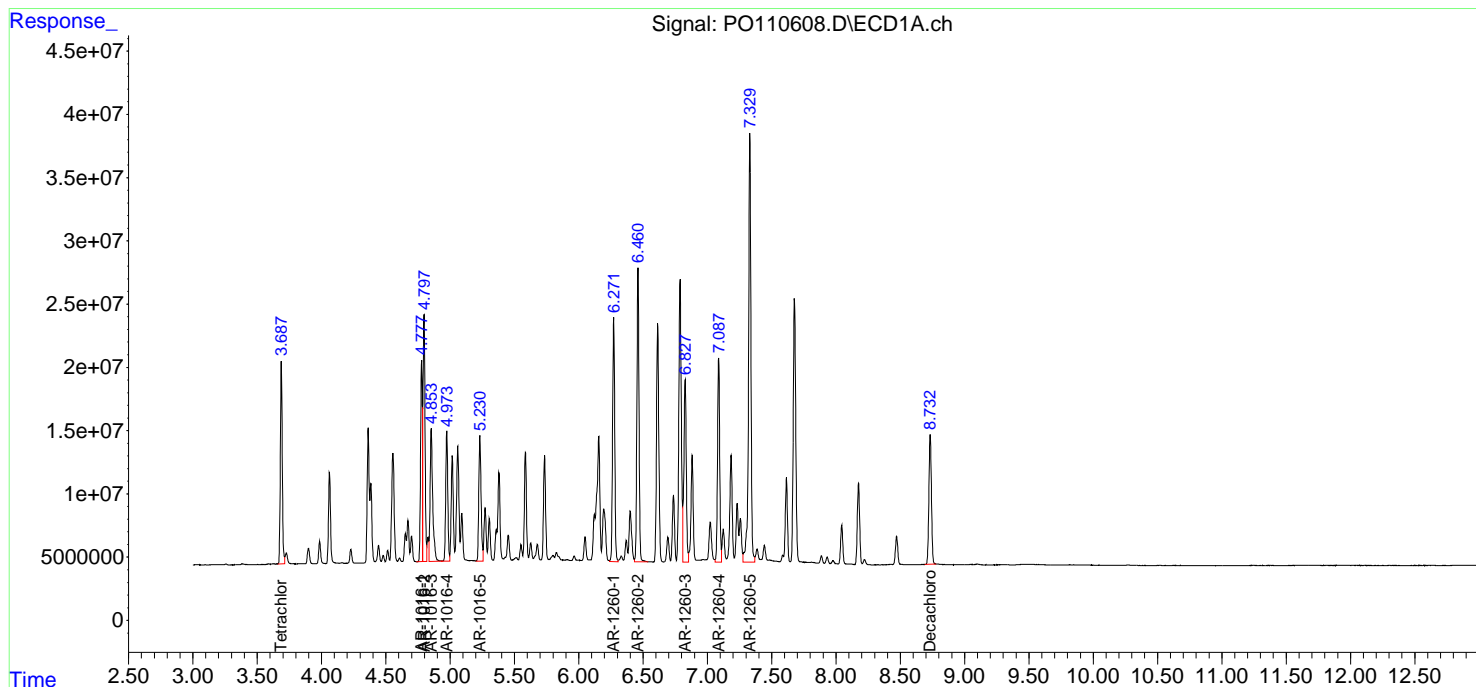
(f)=RT Delta > 1/2 Window (#)=Amounts differ by > 25% (m)=manual int.

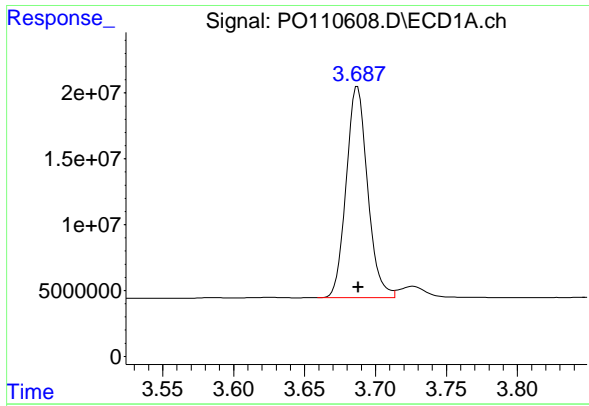
Data Path : Z:\pestpcbsrv\HPCHEM1\ECD_O\Data\PO042225\
 Data File : PO110608.D
 Signal(s) : Signal #1: ECD1A.ch Signal #2: ECD2B.ch
 Acq On : 22 Apr 2025 18:03
 Operator : YP/AJ
 Sample : PB167687BS
 Misc :
 ALS Vial : 18 Sample Multiplier: 1

Instrument :
 ECD_O
 ClientSampleId :
 PB167687BS

Integration File signal 1: autoint1.e
 Integration File signal 2: autoint2.e
 Quant Time: Apr 23 06:59:48 2025
 Quant Method : Z:\pestpcbsrv\HPCHEM1\ECD_O\methods\PO041025.M
 Quant Title : GC EXTRACTABLES
 QLast Update : Fri Apr 11 02:12:41 2025
 Response via : Initial Calibration
 Integrator: ChemStation

Volume Inj. : 2 µl
 Signal #1 Phase : ZB-MR1 Signal #2 Phase: ZB-MR2
 Signal #1 Info : 30Mx0.32mmx 0.50µm Signal #2 Info : 30M x 0.32mm x 0.25µm

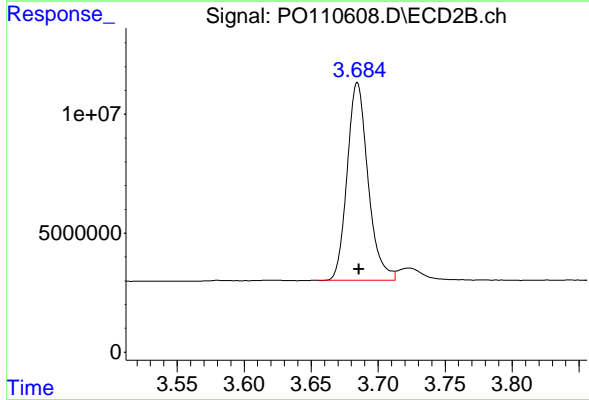




#1 Tetrachloro-m-xylene

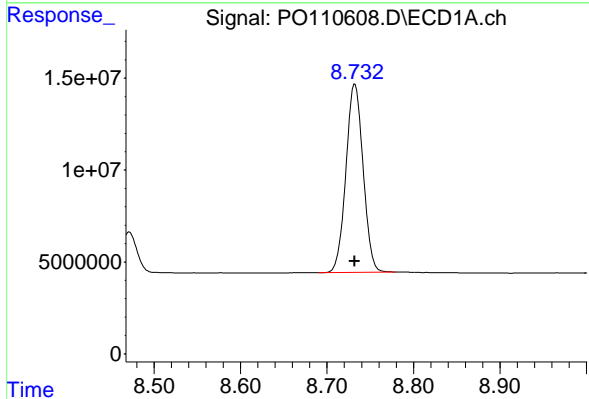
R.T.: 3.687 min
 Delta R.T.: 0.000 min
 Response: 167777780
 Conc: 19.18 ng/ml

Instrument :
 ECD_O
 ClientSampleId :
 PB167687BS



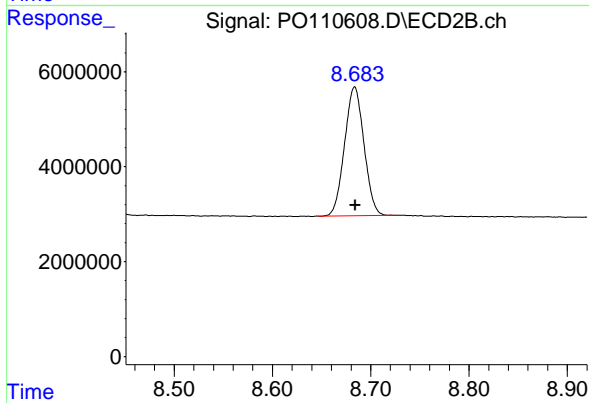
#1 Tetrachloro-m-xylene

R.T.: 3.685 min
 Delta R.T.: -0.001 min
 Response: 90009398
 Conc: 18.04 ng/ml



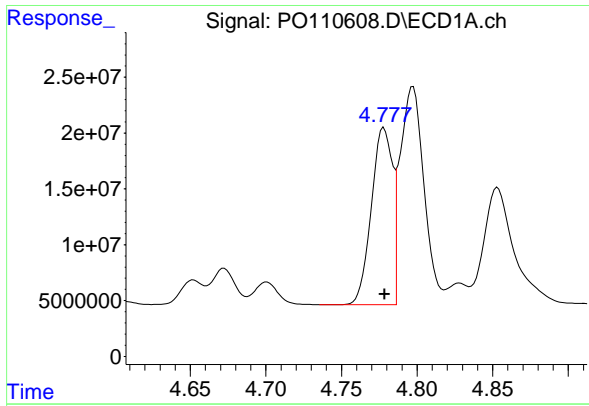
#2 Decachlorobiphenyl

R.T.: 8.732 min
 Delta R.T.: 0.000 min
 Response: 141079581
 Conc: 17.87 ng/ml



#2 Decachlorobiphenyl

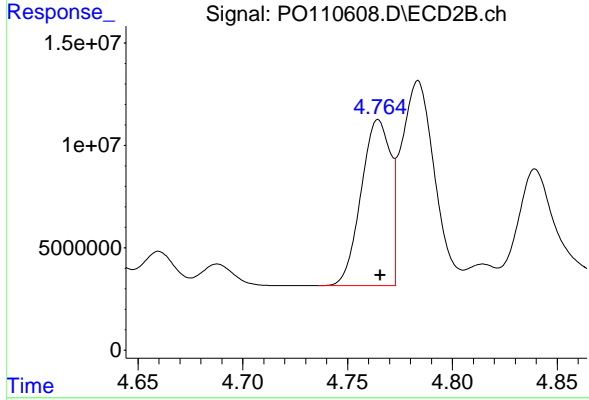
R.T.: 8.684 min
 Delta R.T.: 0.000 min
 Response: 37286360
 Conc: 19.37 ng/ml



#3 AR-1016-1

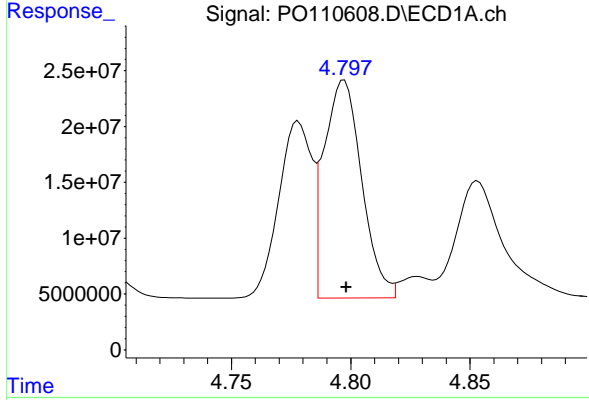
R.T.: 4.778 min
 Delta R.T.: 0.000 min
 Response: 153400164
 Conc: 467.48 ng/ml

Instrument :
 ECD_O
 ClientSampleId :
 PB167687BS



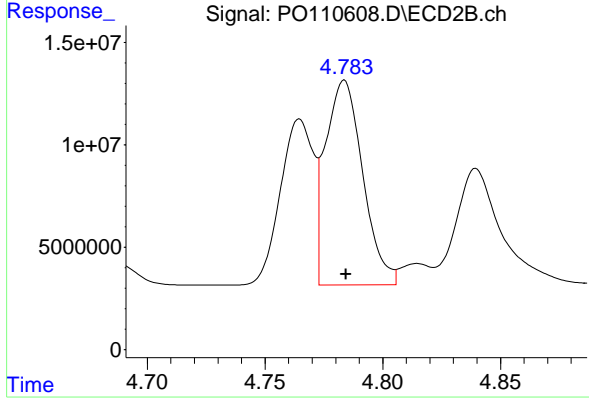
#3 AR-1016-1

R.T.: 4.765 min
 Delta R.T.: -0.001 min
 Response: 78978543
 Conc: 450.00 ng/ml



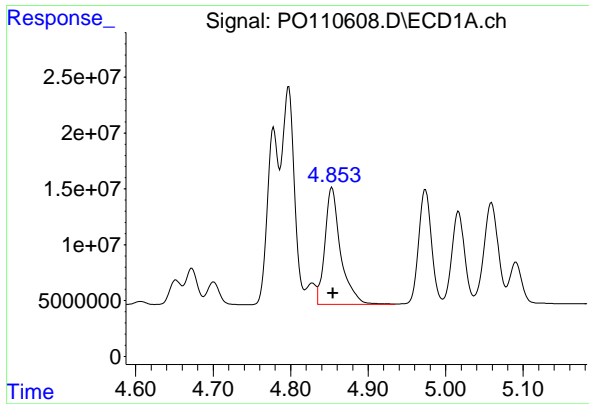
#4 AR-1016-2

R.T.: 4.797 min
 Delta R.T.: 0.000 min
 Response: 214000009
 Conc: 470.38 ng/ml



#4 AR-1016-2

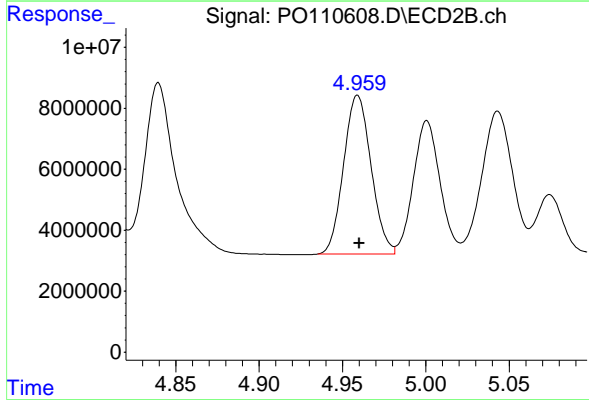
R.T.: 4.784 min
 Delta R.T.: 0.000 min
 Response: 110475596
 Conc: 439.33 ng/ml



#5 AR-1016-3

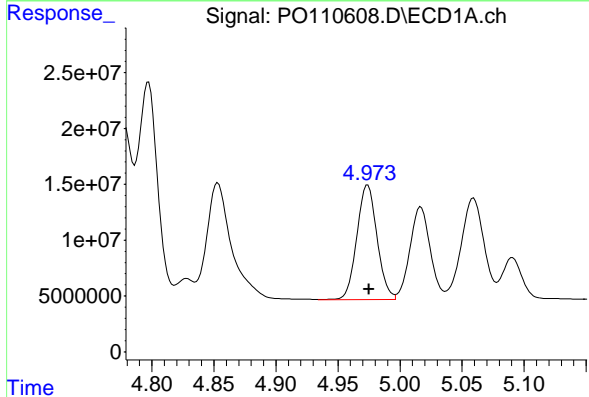
R.T.: 4.853 min
 Delta R.T.: -0.001 min
 Response: 148210377
 Conc: 459.53 ng/ml

Instrument :
 ECD_O
 ClientSampleId :
 PB167687BS



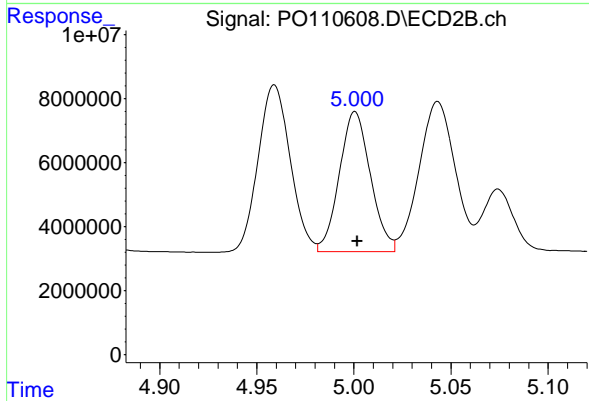
#5 AR-1016-3

R.T.: 4.959 min
 Delta R.T.: -0.001 min
 Response: 59888639
 Conc: 441.30 ng/ml



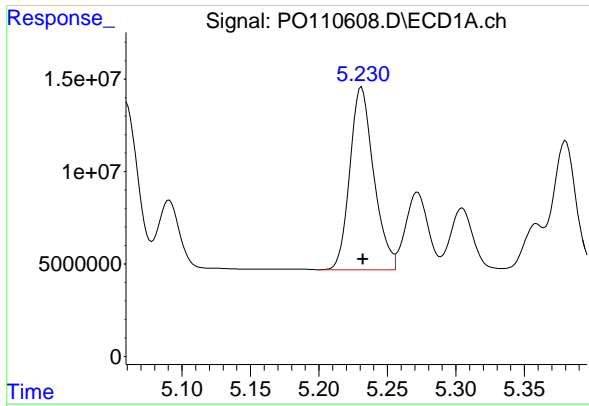
#6 AR-1016-4

R.T.: 4.974 min
 Delta R.T.: 0.000 min
 Response: 116340758
 Conc: 466.92 ng/ml



#6 AR-1016-4

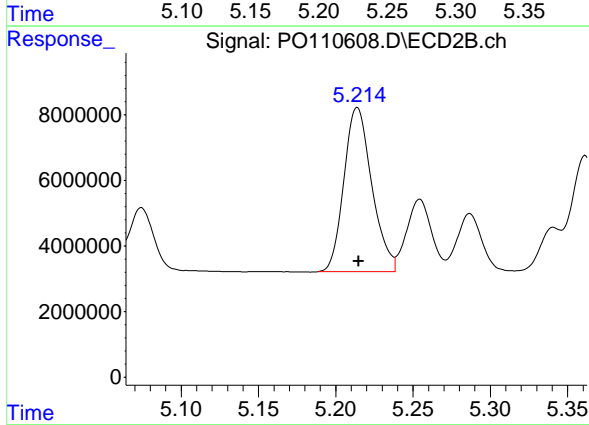
R.T.: 5.001 min
 Delta R.T.: -0.001 min
 Response: 48825368
 Conc: 426.92 ng/ml



#7 AR-1016-5

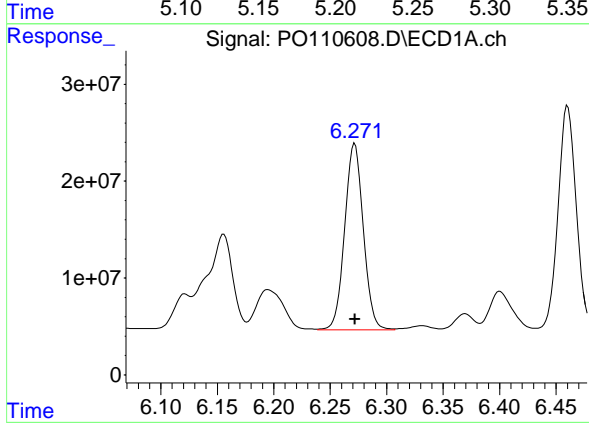
R.T.: 5.231 min
 Delta R.T.: 0.000 min
 Response: 120057755
 Conc: 446.29 ng/ml

Instrument :
 ECD_O
 ClientSampleId :
 PB167687BS



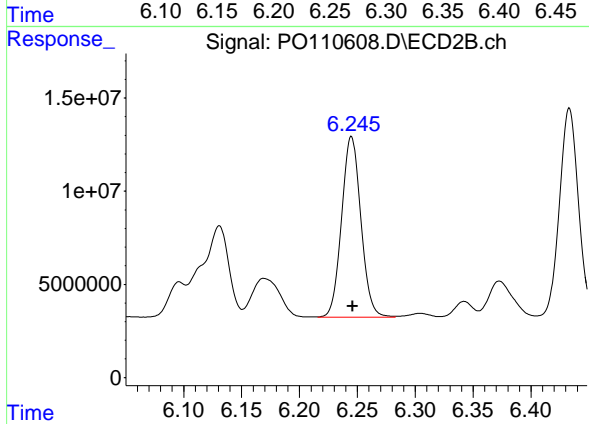
#7 AR-1016-5

R.T.: 5.214 min
 Delta R.T.: 0.000 min
 Response: 62729785
 Conc: 420.80 ng/ml



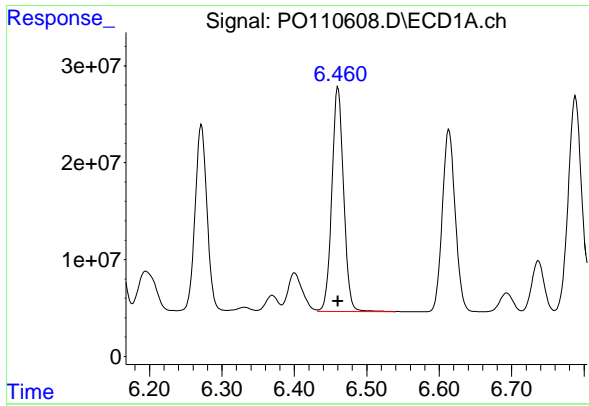
#31 AR-1260-1

R.T.: 6.272 min
 Delta R.T.: 0.000 min
 Response: 221259788
 Conc: 468.33 ng/ml



#31 AR-1260-1

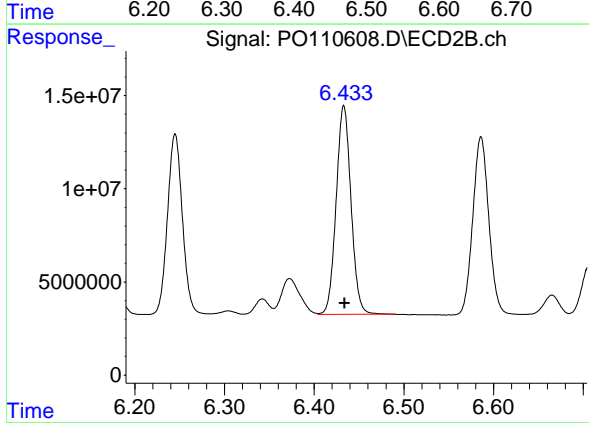
R.T.: 6.245 min
 Delta R.T.: 0.000 min
 Response: 111431354
 Conc: 453.04 ng/ml



#32 AR-1260-2

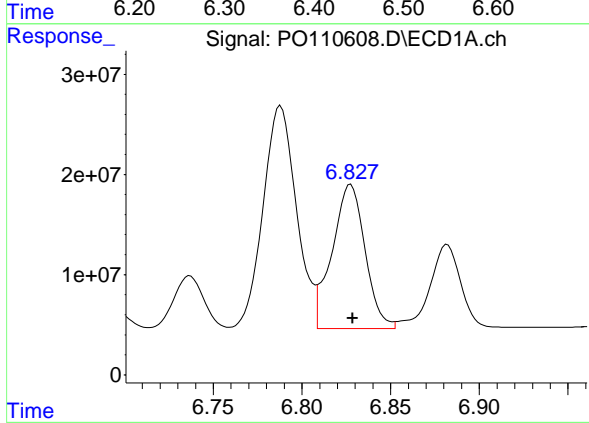
R.T.: 6.460 min
 Delta R.T.: 0.000 min
 Response: 262096565
 Conc: 446.94 ng/ml

Instrument :
 ECD_O
 ClientSampleId :
 PB167687BS



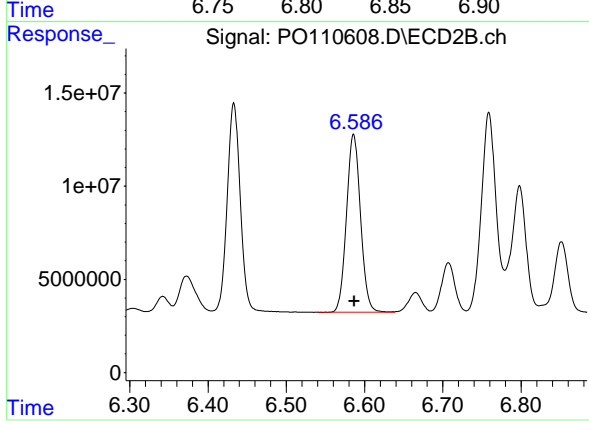
#32 AR-1260-2

R.T.: 6.433 min
 Delta R.T.: 0.000 min
 Response: 129081923
 Conc: 442.44 ng/ml



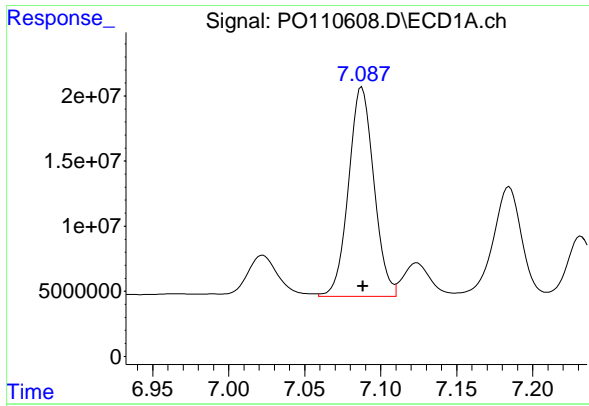
#33 AR-1260-3

R.T.: 6.827 min
 Delta R.T.: -0.001 min
 Response: 186781995
 Conc: 378.97 ng/ml



#33 AR-1260-3

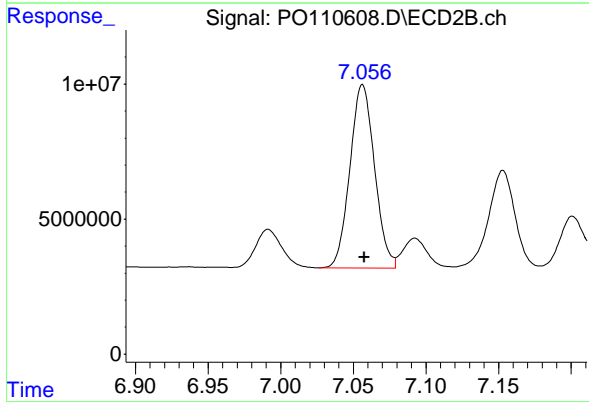
R.T.: 6.586 min
 Delta R.T.: 0.000 min
 Response: 118851806
 Conc: 438.76 ng/ml



#34 AR-1260-4

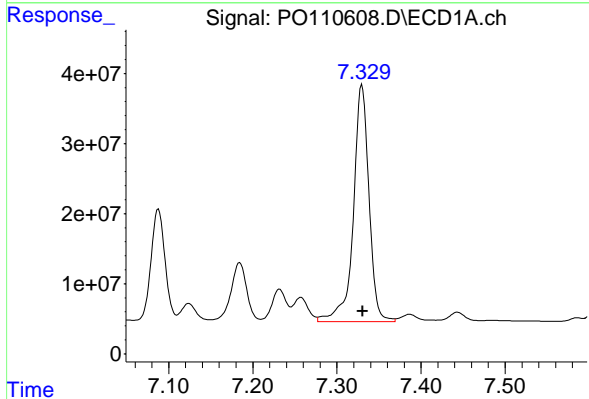
R.T.: 7.088 min
 Delta R.T.: 0.000 min
 Response: 186867823
 Conc: 440.29 ng/ml

Instrument :
 ECD_O
 ClientSampleId :
 PB167687BS



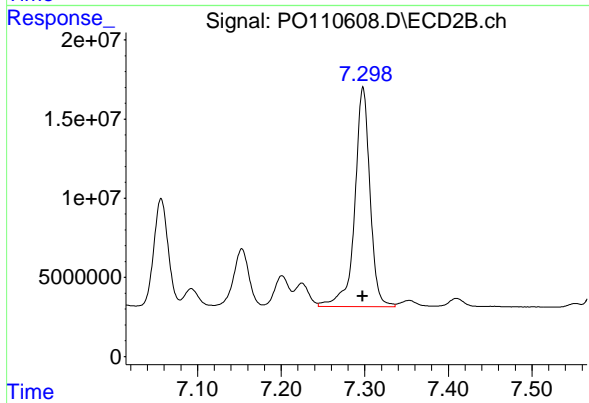
#34 AR-1260-4

R.T.: 7.056 min
 Delta R.T.: -0.001 min
 Response: 80098416
 Conc: 399.21 ng/ml



#35 AR-1260-5

R.T.: 7.330 min
 Delta R.T.: 0.000 min
 Response: 437352894
 Conc: 419.13 ng/ml



#35 AR-1260-5

R.T.: 7.298 min
 Delta R.T.: 0.000 min
 Response: 175613908
 Conc: 382.72 ng/ml